

# *Rhetinantha acuminata*

(LINDL.) M.A. BLANCO  
LANKESTERIANA 7: 534. 2007

**Synonyms:** *Maxillaria acuminata* Lindl. Pl. Hartw. 155. 1845.  
*Lycaste acuminata* (Lindl.) Rchb.f., Bonplandia (Hannover) 3: 216 (1855).  
*Sauvetrea acuminata* (Lindl.) Szlach., Richardiana 7: 29 (2007 publ. 2006).

**References:**

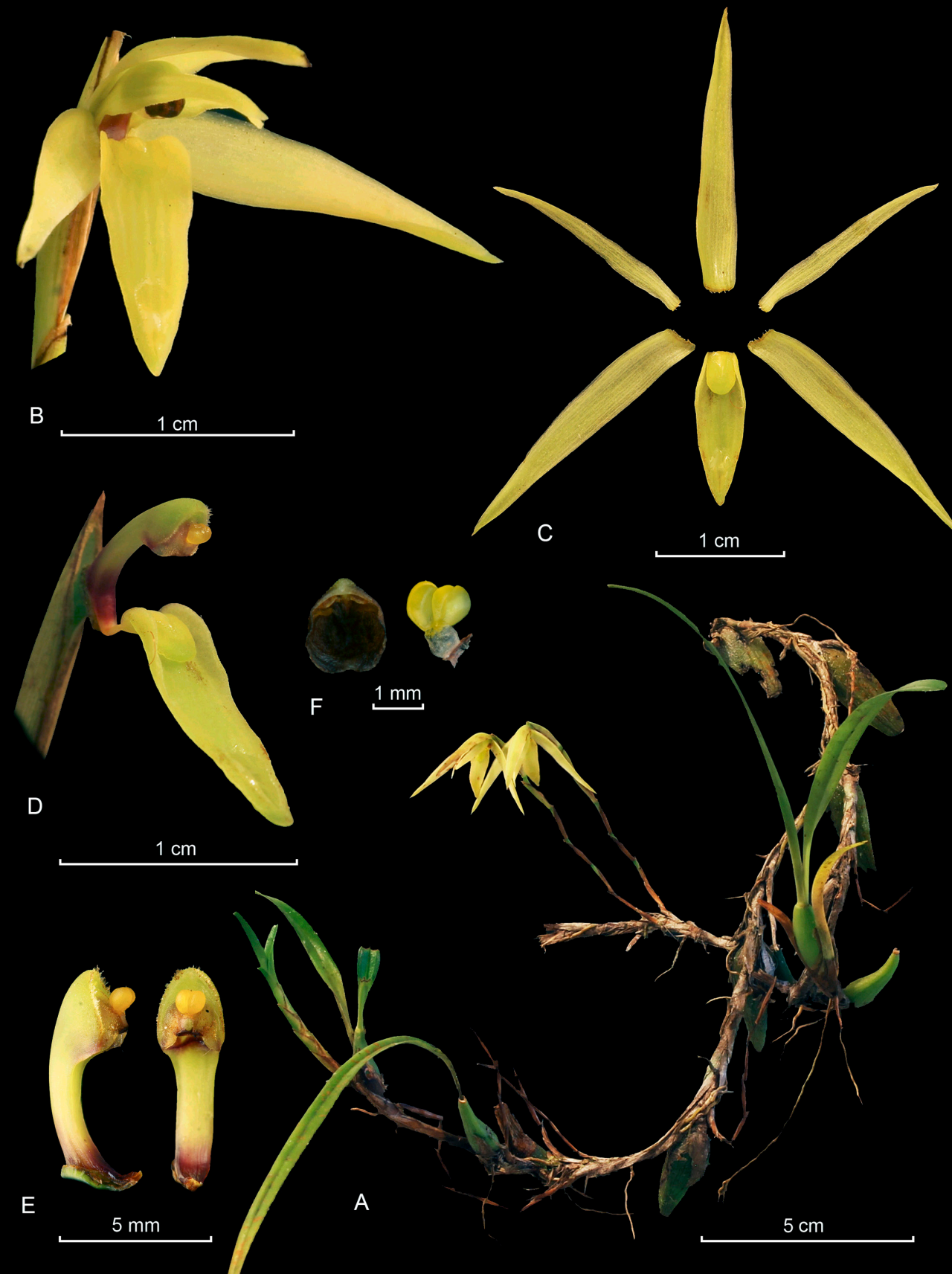
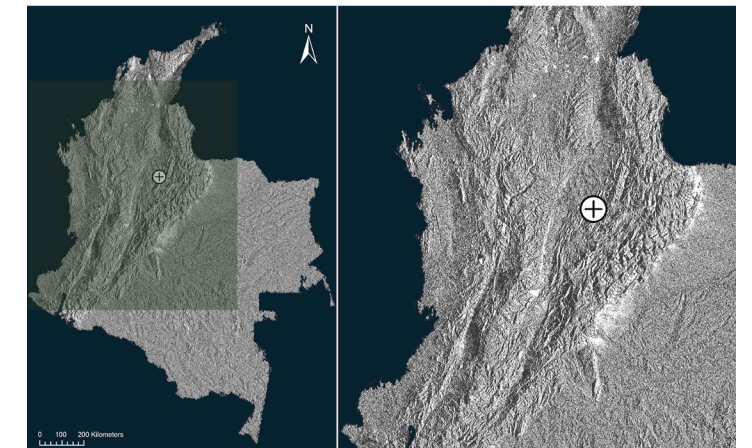
Blanco, M., Carnevali, G., Whitten, W., Singer, R., Koehler, S., Williams, N. Ojeda, I., Neubig, K., Endara, L. 2007. Generic realignments in Maxillariinae (Orchidaceae). *Lankesteriana* 7(3): 515-537.

**Type:** Ecuador. Loja, Cordillera prope Loxa. Nov 1942. *Hartweg 837*. (holotype: K; isotypes: BM, BR, E, FI, G, LD, LE, P).

**Illustrated specimen:** Colombia. Santander: Provincia de Vélez. Municipio de La Belleza. Vereda Vista Hermosa. Mountain pluvial forest. 2406 m, 9 de junio de 2016, *N. Gutiérrez M. 023* (JBB; LCDP voucher).

Epiphyte, sympodial *herb* up to 11 cm, creeping rhizome, elongate between pseudobulbs, surrounded by non foliaceous sheaths. *Roots* thick, produced throughout its length, ca 0.8 mm in diameter. *Pseudobulbs* separated by 2–5 cm, ovate, flattened, ca 2 × 1 cm, bifoliate at the apex, surrounded basally by 2–3 distichous, imbricating, early-dehiscent *sheaths*, ca 2-3.5 cm. *Leaves* narrowly oblong, obtuse at the apex, ca 10 × 0.8 cm, membranaceous. Single flowered *inflorescences* produced on the rhizome bracts behind the most recent pseudobulbs, peduncle enveloped by brownish, distichous sheaths. *Flower bract* sheathing, acute. *Flowers* pale yellow, reddish column foot, dark brown anther cap. *Sepals* narrowly ovate, acute, spreading, ca 2.2 × 0.35 cm. *Petals* linear ovate, acute, subconnivent over the column, ca 1.7 × 0.2 cm. *Lip* oblong pandurate, the margins erect at the base, ca 1.2 × 0.4 cm, callus at the base of the lip ovoid, covered by a sticky material, a resinous substance, callus at the apex deltoid and covered by the same material. *Column* terete, capitate; very short column foot, ca 7.5 × 2.5-1.5. The margins of the *clinandrium* are conspicuously ciliate. *Stigma* ventral. *Anther cap* obovoid, apiculate. The *pollinarium* with a hyaline stipe. *Pollinia* four in two equal pairs, yellow, obovoid. *Capsules* with lateral dehiscence.

*Rhetinantha acuminata* is recognized by its creeping rhizome, inflorescences surrounded by distichous sheaths, pseudobulbs with two apical leaves, lip with especially prominent waxy deposits and ciliate margins of the clinandrium.



**LCDP:** *Rhetinantha acuminata* (Lindl.) M.A. Blanco. A. Habit. B. Flower. C. Dissected perianth. D. Column (without anther cap) and lip three quarters view. E. Column, side and ventral view (without anther cap). F. Anther cap and pollinarium.

