



sarah*
raven
seeds
2022



sarahraven.com

flowers

- Grow your own cut flowers collections 4
- Grow your own cut flowers A-Z 6
- Sweet peas collections 31
- Grow your own cut foliage A-Z 36
- Cottage garden plants 38
- Flowers for shade 43
- Climbers A-Z 47
- Flower meadows 49
- Grow your own container plants 54
- Edible flowers 55
- Grow your own veg & salad 58



kitchen garden

- Veg A-Z 59
- Fruit and veg 68
- Salad A-Z 70
- Companion plants 74
- Herbs A-Z 74



Cover and seed packets are illustrated by Esther Palmer ©

garden kit

- Sowing & growing kit 76, 77, 80
- Slug control 77
- Tools & irrigation 78
- Plant supports 79



My new book is the story of my garden through the year

SIGNED BOOKS

Sarah Raven's **A Year Full of Flowers: Gardening for all seasons**

Tracing the year from January to December, Sarah's book provides inspiration, planting ideas and expert advice for a beautiful garden all year round.

232150 £25.00



Growing from seed was my first gardening love, and along with trialling, it still is. It's a positive life force seeing that tiny handful of seeds growing so quickly and easily into bushy plants covered in flower, or giving an endless source of food. Even if you're a beginner, there's tons for you here.

Happy propagating,

Sarah

Arthur Parkinson's **The Flower Yard**

A beautifully visual, personal and highly informative read on Arthur's love for bold colours, cut flowers and bees. Focusing on smaller, urban gardens, this is a fascinating insight into how Arthur ensures a brilliant show from his pots, treating the garden as if it is a stage.



232151 £22.00

What our symbols mean

- Full sun
- Part shade
- Full shade
- RHS Award of Garden
- Good for pots
- Needs support
- Good for cutting
- c&c** Cut-and-come again
- Loved by garden birds
- Loved by pollinators
- Scented
- Edible flowers or seeds*
- Self-seeds
- Perfect for drying
- HA** Hardy annual
- HHA** Half-hardy annual
- B** Biennial
- P** Perennial
- TP** Tender perennial

See website for further information on plant types. *Please check which parts of the plant are edible and if they need to be cooked. Only proceed if you are certain it is safe.



free instruction booklets

Sent with every order of seeds, bulbs and plants. Invaluable advice for gardeners of every level.

We include a planting plan with all collections that comprise 8 or more varieties.



treat a gardening friend

The perfect gift for every gardener, sent out with a Sarah Raven gift card. Choose from printed Gift Vouchers or Online Gift Voucher. See sarahraven.com/gifting to find out more.

how to order

Delivery information is at the bottom of each page and at: sarahraven.com/delivery

sarahraven.com

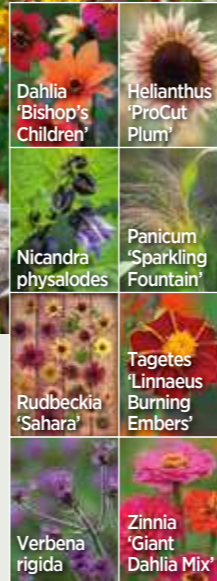
0345 092 0283

Lines open Monday to Saturday 8am-10pm, Sunday 9am-10pm



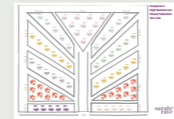
new

GROW YOUR OWN cut flowers



High Summer Cut Flower Collection

A volcanic eruption of the very best and fieriest flowers – dahlias, zinnias, sunflowers and rudbeckias, set against the purple of verbenas and froth of two of our favourite foliage plants. If strong colour and endless buckets of cut flowers are your thing – this selection of cut-and-come-again, prolific producers is made for you. ☀ July-October
140093 8 packets of seed £21.25



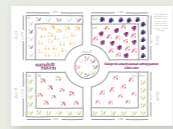
Planting plan included

☀ 🌿 🌻 🌺 🌸 🌼 c&c



Hardy Annual Cutting Patch

Here are many of my favourite hardy annual flowers, supplied with growing instructions and a 3.5m x 4m, detailed planting plan, to give you 2-3 vases of flowers a week from June to October.
020139 8 packets of seed £15.95



Planting plan included

☀ 🌿 🌻 🌺 🌸 🌼 c&c



new

Summer Garden Collection

This is the ultimate summer garden mix; there's poppies here, foxgloves, sweet Williams, love-in-a-mist and the two best umbellifers: orlaya and ammi. Truly, what more could you want? Sow the biennials (foxglove, poppy and sweet William) in summer and the annuals (ammi, orlaya and nigella) in autumn, for all species to flower together the following year. ☀ May-August
140094 7 packets of seed £14.25

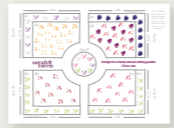
☀ 🌿

If you really love picking flowers, there are lots you can grow yourself. Here we've put together brilliant collections and combinations. Follow our easy instructions and you won't look back. These all thrive on being picked, but cut or not, they will fill your garden with colour.



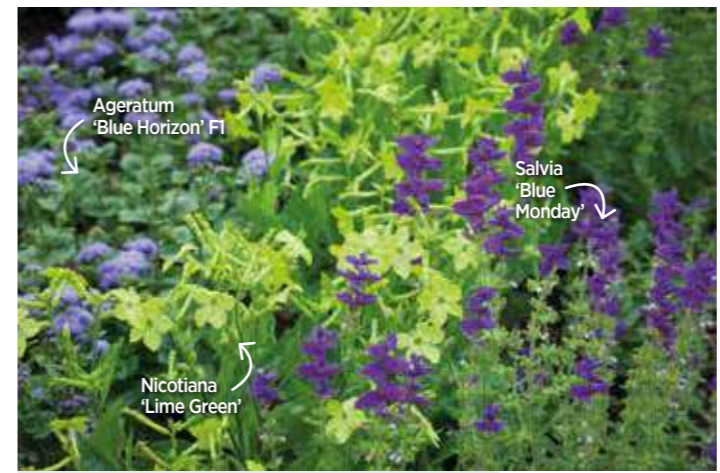
Cutting Patch Seed Collection

This carefully planned selection of cut flower seeds will produce 3-4 vases of flowers a week, from June to October. This is brilliant value, easy and hugely rewarding to grow. Planting plan and detailed instructions included.
131038 16 packets of seed £27.95



Planting plan included

☀ 🌿 🌻 🌺 🌸 🌼 c&c



Blue Mojito Collection

The lime provides the essential sharpener to the blues and mauves, for marvellous, zingy bunches for months at a stretch – one of the very best colour combinations.
☀ June-October
140081 3 packets of seed £6.25

☀ 🌿 🌻 🌺 🌸 🌼 c&c



Plum and Apricot Cut Flower Seed Collection

I'm addicted to this trio of long-flowering cut flowers and garden filler annuals: a climber, a front of border filler and a statuesque back of border sunflower.
☀ July-October
140082 3 packets of seed £11.95

☀ 🌿 🌻 🌺 🌸 🌼 c&c



Grow your own bird food



The Amaranthus Collection

We grow more and more amaranthus. They make superb, unique cut flowers and are some of the best plants to lure birds into the garden. All the finches in particular love the seed.

Sow: February-April. ☀️ July-September. H.1.2m
140071 4 packets of seed £7.50

☀️ 🌿 🌱 🌿 🌿 🌿 c&c



Agrostemma githago 'Milas Snow Queen' HA

One of my favourite summer plants in the white garden at Sissinghurst; tall, elegant, and ghostly, particularly at dusk. An ethereal and stylish cut flower, arranged simply on its own. Warning: parts of this plant are poisonous.

Sow: March-May. ☀️ June-October. H.1.2m

152041 250 seeds £2.95
☀️ 🌿 🌱 🌿 🌿 c&c



Anethum graveolens (Dill) B ORGANIC

A brilliant acid-green cut flower filler, with so many different roles. The leaves are invaluable in the kitchen. I use its flowers for decorating salads and for arrangements, and the seeds for baking and tagines. Best sown direct.

Sow: April-June. ☀️ July-October. H.90cm

020002 750 seeds £1.95
☀️ 🌿 🌱 🌿 🌿 🌿 c&c



Cosmos 'Purity' and Ammi majus Collection

Two of the very best cut flower annuals to fill your borders and vases.

Sow: February-May. ☀️ June-October. H.1.2m

140046
2 packets of seed £2.95

☀️ 🌿 🌱 🌿 🌿 c&c

Growing flowers and filling my house with vases of wonderful homegrown bunches, is one of my favourite things. Make sure you choose a mixture of flowers and foliage so that you have lots to play with.



Ammi HA

Ammi is one of our long-standing bestsellers. It's my favourite filler foliage plant, spectacular arranged in a great cloud on its own. It forms larger, more prolific plants from an autumn sowing.



Ammi majus (Bishop's Flower)

Sow: February-May and/or August-September. ☀️ June-October. H.1.2m

020001 500 seeds £1.95
☀️ 🌿 🌱 🌿 🌿 🌿 c&c



Ammi visnaga

A slightly chunkier form of ammi with dense yet delicate white and green-domed flowers. This makes one of the best garden plants and filler foliage you can grow, with beautiful seedheads, which gives it a longer garden life than A. majus

Sow: February-May and/or August-September. ☀️ June-October. H.1.2m
020064 500 seeds £1.95

☀️ 🌿 🌱 🌿 🌿 c&c



Daucus carota 'Purple Kisses' mix B

In a mix of crimson and white, this airy, elegant umbellifer is the perfect filler foliage plant for almost any vase. Warning: Do not eat - ornamental plant only. For Daucus carota (wild carrot) see page 53.

Sow: September-April. ☀️ June-September. H.1.2m
060061 150 seeds £3.50

☀️ 🌿 🌱 🌿 🌿 c&c



antirrhinums

Sarah Raven Antirrhinum Mix

If you like a rich colour palette, these snapdragons hit the spot. These are brilliant border fillers and cut flowers in the loveliest spectrum of colours. H.60cm
120173 40 seeds £4.95



Sarah planting out Antirrhinum 'White Giant' F1 - see page 9

Antirrhinum (Snapdragons)

P/A

Snapdragons are invaluable plants for their full flower spikes that last well over a week in water.

Sow: February-April and/or September-October, for overwintering undercover.

☀️ June-October.



'Chantilly Light Pink' F1

'Chantilly Pink' F1

'Chantilly White' F1

Arranged here with Lavatera trimestris 'New Dwarf Pink Blush', see website.

Strawberry Fool 'Chantilly' Mix

A pretty and feminine colour mix of Chantilly antirrhinums which flower long and hard. The Chantillys have a scent and open flowers, without the usual snapdragon double lip. They are easy, prolific, reliable and hardier than other antirrhinum types. H.60cm
120184 50 seeds £7.95



Growing here with Calendula 'Snow Princess' see page 10.

A. majus 'White Giant' F1

This one is a giant in pure white, which makes a statuesque and beautiful cut flower. Our top selling favourite. Self-sows at Perch Hill. H.90cm
030052 30 seeds £3.50



These tall and elegant, rust-resistant varieties are borderline hardy, and survive outside in a sheltered spot. Overwinter them for huge, early flowers in May, or just sow under cover in early spring, for picking in summer and autumn. They self-sow with us in Sussex and have an excellent vase life.



A. majus 'Appleblossom'
A tall and long-flowering snapdragon with spires the colour of apple blossom. Use this as a spike in a container or vase. Highly scented. H.90cm
152021 750 seeds £1.95



A. majus 'Brighton Rock'
A cheery and pretty mix of antirrhinums which excelled in our trials last summer. Versatile and hard-working, with a superb vase life. H.45cm
153049 750 seeds £1.95



A. majus 'Chantilly Deep Orange' F1
We are very excited to have this new colour form of the Chantilly series snapdragons, flowering right through summer and often into autumn, as long as you keep picking! A new firm favourite, with a fruity scent. H.60cm
153050 50 seeds £4.95



A. majus 'Chantilly White' F1
A hugely prolific and long-flowering pure white antirrhinum of the Chantilly type. It is very hardy and survived the winter outside with us in Sussex. H.60cm
153037 50 seeds £4.95



A. majus 'Liberty Classic Crimson' F1
Tall, velvety, rich flowers in a voluptuous deep crimson. This has remained one of my favourites and a long-standing bestseller for over 20 years. H.60cm
030004 30 seeds £3.50



A. majus 'Madame Butterfly Mixed' F1
Soft, curvy, full and flowery, a series of cheerleader pom poms on a stem. You only need a few and you've filled a vase. H.75cm
153066 100 seeds £4.95



A. majus 'Potomac Lavender' F1
This is an unusually coloured snapdragon, with smoky, silvery pink flowers on colossal stems. It's ghostly and glamorous. H.90cm
153048 30 seeds £4.95

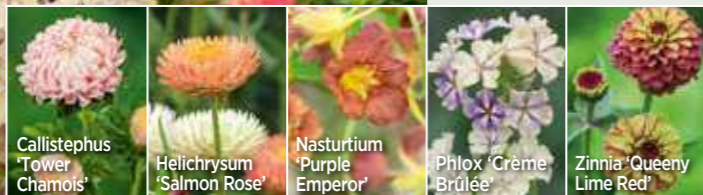


Provençal Collection

I love the mix of colours here which remind me of the best of Provence – aged lime plaster and terracotta tiles, all mixed with the tones of a spectacular summer sunset. This should make you smile.

Sow: February-March.
 ☀ June-October. H.90cm
 140083
 5 packets of seed
 £13.50

☀ 🌱 🌿 🌻 🌼 🌸 c&c



Callistephus 'Tower Chamois'

Helichrysum 'Salmon Rose'

Nasturtium 'Purple Emperor'

Phlox 'Crème Brûlée'

Zinnia 'Queeny Lime Red'



Callistephus chinensis 'Tower Chamois' HHA

A fashionable new colour of a stellar explosion-style of aster. Like many of the aster family, these flower long and hard into autumn. And last for AGES in a vase.

Sow: March-April. ☀ July-October. H.75cm
 153068 150 seeds £2.25

☀ 🌱 🌿 🌻 🌼 🌸 c&c



Super early Calendula 'Snow Princess' planted with tulips

Calendula (English or Pot Marigold) P/A

These are some of the quickest and easiest plants you can grow from seed. The flowers are edible and they make brilliant companion plants, incredibly effective skin cream (see website) and cut flowers. These will all self-sow.

Sow: March-May and/or late August-September.
 ☀ June-August. H.45cm

☀ 🌱 🌿 🌻 🌼 🌸 c&c



C. 'Indian Prince'

Deep orange with crimson backs, to match the crimson centre of the flower. A classic.
 020007 125 seeds £1.95



calendulas



Photograph by Arthur Parkinson



C. 'Sunset Buff'

Calendula officinalis 'Sunset Buff' is the soft buff-apricot version of 'Indian Prince' with the same crimson petal backs but a much more subtle flower colour overall.
 020116 75 seeds £1.95



Calendula 'Indian Prince'

Echium 'Blue Bedder'

Self-seeding Cut Flowers Collection

Two massive pollinator plants which will be teeming with butterflies and bees from spring to autumn. They make a great pair, direct sown to fill a sunny corner and then picked for the vase. Sown once, they should then reappear year after year. ☀ May-September
 140100 2 packets of seed £2.75

☀ 🌱 🌿 🌻 🌼 🌸 c&c



C. 'Touch of Red Mix'

Perfect for a mixed jug of simple flowers with yellow, cream, apricot and orange, all with a rich crimson petal reverse.
 020101 125 seeds £1.95



Centaurea 'Classic Magic'

new

Dianthus 'Sweet Purple White Bicolor'

Phlox 'Crème Brûlée'

Crème de Cassis Collection

A Crème de Cassis collection of some new-found favourite cut flower varieties, perfect for growing and picking together. The cornflowers and sweet Williams are edible, so we use them to decorate cakes and salads.

☀ June-August. H. up to 90cm
140097
3 packets of seed £12.25



Verbena bonariensis

Centaurea 'Blue Boy'

Anchusa 'Blue Angel'

Salvia 'Blue Monday'

cornflowers

Amethyst & Sapphire Cut Flower Mix

For a jewel-like mix of flowers that the bees and butterflies love, scatter these in a sunny corner of your garden to pick for the house. ☀ June-October. H. up to 1.8m

030102 700 seeds £3.75



Top bee favourite

Cerinthe major 'Kiwi Blue' (Honeywort) HA

Cerinthe is one of my all-time favourite border filler and cut flower foliages, and now there's this one, which is even better, bigger, smokier and more purple.

Sow: March-April and/or August-September. ☀ May-August. H.60cm
152043

15 seeds £2.95



Cerinthe major 'Purpurascens' (Honeywort) HA

A very early flowering annual, with lovely silver, curving hoods, and deep purple bells. Superb as a garden plant, in pots underplanting tulips, and as a cut flower.

Sow: March-April and/or August-September. ☀ May-August. H.60cm
020010 12 seeds £1.95



Scabiosa 'Sternkugel'

Phlox 'Crème Brûlée'

Consolida 'Misty Lavender'

The Misty Lavender Collection

Smoky, soft, sophisticated and elegant - this is a swoony mix with the larkspur and scabious seedheads joined by the phlox in midsummer. Keep picking and they'll keep flowering.

Sow: February-May. ☀ May-October. H.45cm
140062 3 packets of seed £5.95



Centaurea cyanus (Cornflower) HA

Sow: March-May and/or late August-September.

☀ June-August. H.90cm. If autumn-sown, H.1.2m



No country garden is complete without its cornflowers - loved by pollinators, brilliant as cut flowers, and they make superb buttonholes. Dry these for natural confetti or pot pourri.

Consolida (larkspur) HA

Sow: February-May and/or late August-September. Germination helped by one week in freezer before sowing, best from a direct sowing in spring or autumn.

☀ June-October H.90cm



Annual delphiniums flower longer and harder than the perennial forms. They have an excellent vase life, looking good for two weeks if kept cool. They'll dry well too - just hang upside down.



C. cyanus 'Polka Dot Mixed'

A wonderful array of beautifully coloured compact cornflowers, which will fill a sunny corner for weeks. H.45cm

020102 500 seeds £1.95



C. cyanus 'Black Ball'

Dark crimson, double flowers, whose colour does not fade. It dries brilliantly too.

020009
300 seeds £1.95



C. cyanus 'Blue Boy'

Large-flowered cornflower in classic bright blue.

020008
300 seeds £1.95



C. cyanus 'Classic Magic'

Great for the vase and for decorating puddings, drinks and cakes.

152042
200 seeds £2.95



Consolida ajacis 'Dark Blue'

A lovely deep blue, beautiful arranged with acid-green foliage.

020066 400 seeds £1.95



Consolida ambigua 'Giant Imperial Mixed'

One of the best varieties with dense flower spikes in a brilliant range of colours.

020143 300 seeds £1.95



Consolida ajacis 'Misty Lavender'

A sultry, smoky new form of this invaluable and reliable cut flower.

152023 200 seeds £4.25



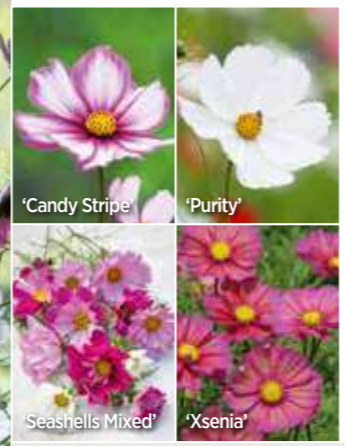
Consolida ajacis 'White'

A pure white and extra tall spire to add to your white border or bridal flowers.

020068 400 seeds £1.95



Cosmos HHA
 Sow: March-April under cover or direct in May. 🌱 12-14 weeks from sowing.
 ☀️ 🌿 🌱 🌿 🌱 c&c



Cloud of Cosmos Mix
 There are few nicer ways of filling vases throughout summer and autumn than with a cloud of cosmos. As long as you don't cut the plants right to the ground, but above a pair of leaves, more buds will form to fill next week's vases and more for the week after that – and on and on it goes – for an ever-filling vase. H.90cm
 120194 100 seeds £4.95



Essential Cosmos Collection
 Classic white flowers of 'Purity' provide a wonderful contrast against the carmine-edged petals of 'Candy Stripe'. A beautiful combination. H.90cm
 140039 2 packets of seed £3.25



Arranged here in our Nero Vase (see website) with Verbena bonariensis and rigida (see page 42) and Panicum 'Sparkling Fountain' (see page 37)

C. bipinnatus 'Purity'
 The classic cut flower and supremely lovely garden plant that no one should be without. It has great flowers and good foliage. H.90cm
 030014 100 seeds £1.95



Cosmos are super long-flowering and prolific cut flower producers. They have excellent vase life, and with the compact varieties, they are one of the supreme container performers too. Grow them yourself from seed, it's the best way.



C. bipinnatus 'Antiquity'
 A very beautiful variety of shorter cosmos, with flowers that open the darkest, most luscious crimson and then fade a little to look antiqued. No need to stake. H.60cm
 030083 40 seeds £6.95



C. bipinnatus 'Candy Stripe'
 White-flowered with a deep carmine edge as if every petal has been dipped in ink. Grow as a splash of colour through Cosmos 'Purity' – it contrasts brilliantly. H.90cm
 030157 100 seeds £1.95



C. bipinnatus 'Dazzler'
 Large, open, buttercup-like flowers of carmine pink with delicate, feathery foliage. Beautiful, tall and airy. H.90cm
 030013 100 seeds £1.95



C. bipinnatus 'Double Click Rose'
 A double cosmos with flowers like ruffled satin, I love it for its pink. It has tall, strong stems and is very good for cutting. H.90cm
 153003 40 seeds £4.95



White Cosmos Collection
 The semi-double flowers of 'Fizzy White' and the large, open flowers of 'Purity' make a winning combination of pure, crisp white. H.90cm
 140060 2 packets of seed £2.50



Pale Cosmos Mix
 Scatter these seeds direct into a sunny corner of your garden, thin the seedlings and then pick hundreds of vasefuls from late June until at least October. H.90cm
 030151 100 seeds £2.20





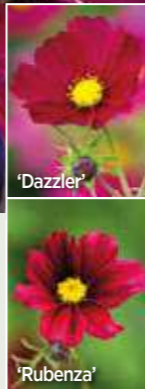
Ultimate Cosmos Mix

Our bestselling cosmos in a fabulous mix. H.90cm
030160 100 seeds £2.95



Dark Cosmos Mix

The two darkest and richest coloured cosmos mixed together in one pack.
H.90cm
030110 140 seeds £4.95



Reasons to grow cosmos:

- stacked with nectar and pollen, so bees and butterflies love them
- super productive – they produce more bunches of flowers from a square metre than any other plant I know; 50 buckets/m² in my garden
- very easy to grow, as you can sow direct or under cover for planting out when the frosts are over
- good for cutting and the foliage is pretty too



C. bipinnatus 'Double Click Cranberries'

Like a handful of ruffled silk in the richest carmine. A brilliant find that should become a staple in your garden.
H.90cm
030133 40 seeds £3.95



C. bipinnatus 'Seashells Mixed'

One of the jolliest mixes of flowers you'll ever see, blooming their socks off in the garden and picked in a balloon of colour for a vase.
H.90cm
153070 100 seeds £2.25

Even if you only have a tiny garden, or just some pots, you have to grow at least one cosmos. They are the very best, low-maintenance and floweriest plants in the world. ☀️ 🌿 🌱 🌻 c&c



Doorstep Duo Cosmos Mix

The perfect pairing of two quite compact varieties of cosmos, beautiful growing together in a container on your doorstep, and then picked to fill your vases inside.
H.60cm
120195 50 seeds £6.50



Sarah Raven Cosmos Seed Tin Collection

A brilliant present for the cosmos lover. See website for full details.
131010 4 packets of seed £13.95



Float flowers in a bowl for an instant arrangement

Cosmos 'Double Click' Mix

The showiest of all cosmos, with blooms like ruffled tissue paper, just like we used to make as children, in a mix of colours: pale pink, rich pink and white.
H.90cm
153011 50 seeds £3.50



'Double Click Cranberries'

'Candy Stripe'

Carmine Cosmos Collection

Handfuls of crumpled magenta silk, studded with dashes of white and gold – this duo flowers prolifically all summer and autumn, making a splendid border and cut flower pair. H.90cm
140061 2 packets of seed £4.50



Pale Cosmos Container Collection

A very long-flowering, calm and pretty duo of white and primrose yellow cosmos, both suitable sizes for growing in containers, and rather than deadheading, livehead for long-lasting vases inside too. H.60cm
140055 2 packets of seed £4.95



C. bipinnatus 'Xanthos'
A new variety of cosmos in soft yellow, to contrast with white or rich crimsons. It's compact too, so ideal for pots as well as for picking. H.60cm
153016 30 seeds £4.45



C. bipinnatus 'Fizzy White'
This has showy semi-double flowers which are brilliant for arranging in vases large and small. H.90cm
030134 50 seeds £1.95



C. sulphureus 'Tango'
This new variety of Cosmos sulphureus is rare to find and invaluable for being a single colour, just the brilliant tangerine on its own without the yellow. H.1.2m
152052 30 seeds £1.95



C. bipinnatus 'Dwarf Sensation White'
Just like our bestselling 'Purity' but bred to be ideal for pots. H.60cm
030149 100 seeds £2.25



Dahlia variabilis 'Bishop's Children' TP
Brilliant, richly coloured flowers in deep pink, burnt orange, plum purple and blood red, all set against dark crimson foliage. Overwinter under mulch in the South to be perennial. Sow: March-April. 16 weeks from sowing. H.90cm
030085 30 seeds £2.25



Dahlia Cactus Mix TP
Marvellous, spiky sea urchin dahlias, which are great for cutting and will flower in the garden for many years. Sow: March-April. 16 weeks from sowing. H.1.2m
153002 40 seeds £1.95



Dianthus barbatus 'Hollandia Purple Crown' B
Such a classy, glamorous mix of colours with different tones of purple into crimson, with a sweet scent and the longest vase life of any plant we grow (nearly a month). Sow: May-July. May-July the following year. H.45cm
156027 50 seeds £2.25

Cosmos will produce at least two buckets of flowers a week from a 1m x 1m patch. That's nearly 50 bunches of flowers from a metre square in one season - WOW!

Three new additions to our pinks/carnation/sweet William brigade - tried, tested and loved at Perch Hill for their floweriness and FRAGRANCE.



C. bipinnatus 'Rubenza'
An even darker, richer and more luscious colour than 'Antiquity' or 'Dazzler' (see page 14) and a short one too, so should not need staking in a sheltered spot. H.60cm
030107 40 seeds £2.25



C. bipinnatus 'Sensation Pinkie'
Soft pink cosmos to flower in a pot all summer and autumn, and you can harvest it for vases too. H.60cm
153004 100 seeds £2.25



C. bipinnatus 'Sonata Carmine'
The compact version of the classic carmine 'Dazzler'. Easy to grow and very long-flowering. Use it as a front of border filler. Pick it for vases too. H.45cm
153030 50 seeds £2.95



C. bipinnatus 'Velouette'
A dark rich, luscious crimson cosmos with slashes of white to lighten and brighten every flower. This is brilliant in a tall container and cut for the vase. H.90cm
153012 50 seeds £2.50



Dianthus barbatus 'Electron Mix' B
An exceptional sweet William which behaves like a perennial at Perch Hill, now flowering for its third year with excellent tall, straight stems. Self-sows. Sow: May-July. May-July the following year. H.60cm
156000 200 seeds £2.25



Dianthus barbatus 'Sweet Pink Magic' F1 B
Three colours on one plant, this makes a pretty and harmonious collection. Brilliant for containers, as a cut flower and border filler. Can also be grown as an annual. Sow: May-July. May-July the following year. H.90cm
156004 15 seeds £4.75



Dianthus caryophyllus 'Benigna White Striped' P
The scent of these very long-lasting carnations is INCREDIBLE, truly powerful, utterly delicious and clove-like, just like a classic old-fashioned Malmaison carnation. Sow: February-April. July-September. H.60cm
156025 100 seeds £2.25



Dianthus superbus P
Every flower is a slightly different variation on white and pink, the ragged-lace fringes looking almost as if the plant had been out all night in a frost and had emerged coated in crystal. Sow: February-April. June-August the following year. H.45cm
156026 200 seeds £2.25



new



helianthus

Vintage Sunflower Mix

A classy and sophisticated grove of sunflowers very different to the Van Gogh yellows, and to me, all the lovelier for its mix of rich and gentle tones. Grow these together in a garden sunflower swathe and pick again and again for a jug or vase. The more you pick, the longer they flower. H.1.5m 120197 30 seeds £4.95



Vintage Sunflower Mix in the border.

Helianthus (Sunflower) HA

Brilliant for scale and drama, for the birds and the bees, sunflowers are essential in my garden. Pinched out at 20-25cm, they branch and bush out and make superb cut flowers.

Sow: March-May. 🌻 12-14 weeks from sowing. Heights vary, see individual varieties



'Vanilla Ice'



'Claret' F1

'Valentine'

Sunflower Seed Collection

One pack each of Helianthus annuus 'Claret' F1, 'Valentine' and debilis 'Vanilla Ice'. Brilliant for the birds. H.1.5m 020079 3 packets of seed £6.95



H. annuus 'Ms Mars'

This glamorous and unusual variety came top in the sunflower trials at Parham House historic gardens in Sussex. Ideal for the front of the border, or growing in a pot. H.60cm 152003 10 seeds £2.95



H. annuus 'ProCut Plum'

A statuesque and elegant sunflower with petals the most delicious mix of soft colours; dusky crimson and café au lait. This was one of my favourite new discoveries in our recent trials. H.1.5m 152033 20 seeds £4.95



H. annuus 'Claret' F1
A deep wine-red sunflower which develops orange, flame-like tints to the petals as the flowers mature. H.1.5m 020073 20 seeds £2.95



H. annuus 'Double Dandy'
A beautiful soft brown and crimson, with semi-double flowers – I love it. H.60cm 152002 10 seeds £2.95



H. annuus 'Magic Roundabout' F1
A truly lovely mix of coffee and vanilla ice cream colours, all with a rich crimson-chocolate heart. H.1.8m 152016 50 seeds £4.50



H. annuus 'Micro Sun'
This vibrant sunflower is fabulous in pots, and flowers well into the autumn. H.60cm 020144 8 seeds £3.95



H. annuus 'Ruby Eclipse'
An exceptional performer in our sunflower trial, this was one of the earliest to flower. A very consistent colour, unusual in this colour group – crimson mixed with milky coffee'. H.1.8m 152054 20 seeds £2.75



H. annuus 'Sonja'
A classic cut flower variety of sunflower with pretty, petite flowers in a golden yellow. It's easy to grow and a prolific flowerer. H.90cm 152017 50 seeds £4.95



H. annuus 'Valentine'
The perfect, large-flowered sunflower with primrose yellow petals and chocolate centres. As a cut flower, an added bonus is that the pollen does not drop. H.1.5m 020016 20 seeds £2.50



H. debilis 'Vanilla Ice'
The debilis forms have smaller blooms, perfect for hand-tied bunches, and are hugely prolific and long-flowering. H.1.2m 020021 40 seeds £1.95

Gaura lindheimeri
'The Bride' P
Gaura 'The Bride' has wonderful long, elegant spikes of pink buds opening to white flowers which flower longer than any other plant in my garden. H.1.2m
030016
30 seeds £2.50



new



new

Gaura lindheimeri
'Emmeline Pink' P
Grow the more compact varieties of Gaura, like this pink, in pots for puffy clouds of colour all summer and autumn or plant them in your borders en masse. H.45cm
157051 10 seeds £5.75



new

Gaura lindheimeri
'Sparkle White' P
This is my favourite gaura for picking. I love arranging a good handful of stems on their own like posh gypsophila – and it makes a great filler. H.45cm
157050 10 seeds £6.25

Limonium
HHA
These flower for months, particularly if you keep picking them regularly and of course, they're the most sustainable way to decorate your house through the winter. We loved these growing in pots on our doorstep - airy, elegant, skeletal and stylish.
Sow: March-April. * July-October. H.60cm
☀️ 🌱 🌿 🌻 🌼 🌸 c&c



L. sinuatum
'QIS Pastel'
153072
100 seeds £4.95

L. sinuatum
'QIS Apricot'
153071
100 seeds £4.95



Linaria maroccana
'Licilia Violet' HA
Vibrant, scented, rich violet miniature snapdragons, excellent as border fillers and as cut flowers.
Sow: March-June and/or September-October. * April-August. H.45cm
152005 200 seeds £1.95
☀️ 🌱 🌿 🌻 🌼 🌸 c&c



Linaria maroccana
'Sweeties' HA
A jumble of brilliant, pretty colours, with mini snapdragon flowers and scent.
Sow: March-June and/or September-October. * April-August. H.45cm
120037 500 seeds £1.95
☀️ 🌱 🌿 🌻 🌼 🌸 c&c

Gaura lindheimeri (syn. Oenothera) P
Gauras would be one of my desert island plants – they're drought resistant, tough and durable and yet look exactly the opposite, creating the most delicate, ethereal cloud.
Sow: February-March. * May-October.
☀️ 🌱 🌿 🌻 🌼 🌸 c&c

Soft, billowy, cloud-forming flowers – gaura and gypsophila – to fit in between things and to create puffs of air in a pot or vase.

Linaria (toadflax) flower for months at a stretch and look wonderful in the garden and cut to put in a small glass or jug. They also develop from seed to flower at record speed.



new

Consolida
'Misty Lavender'

Gypsophila
'Single White'

Sea Mist Cut Flower Collection
A smoky sea mist is exactly what this reminded me of growing together in our trial last summer and then picked for lots of small bottles and vases down the centre of our table. I fell in love with both.
* June-October. H.90cm
140099
2 packets of seed £3.95
☀️ 🌱 🌿 🌻 🌼 🌸 c&c



Gypsophila elegans
'Covent Garden' HA
This simple, single gypsophila could not be more different to the tree, top-heavy double form often used in flower arranging. I love this, as a filler in the garden and vase.
Sow: March-June and September. * June-August. H.45cm
070072 1000 seeds £1.95
☀️ 🌱 🌿 🌻 🌼 🌸 c&c



new

Gypsophila paniculata
'Single White' P
Fabulous arranged in small vases down the middle of the table. This is one of the most elegant, cloud-creating perennials you can grow, so much more delicate and pretty than the double form.
Sow: April-July. * July-August H.60cm
157049 1000 seeds £2.95
☀️ 🌱 🌿 🌻 🌼 🌸 c&c



Lupinus mutabilis var. cruckshankii
'White Javelin' HA
I've always loved a lupin and these (annuals) flower all summer and have perfume. Keep deadheading and you'll have fragrant plumes, for inside and out.
Sow: March-May. * July-October. H.1.2m
152045 30 seeds £4.25
☀️ 🌱 🌿 🌻 🌼 🌸 c&c



Malope trifida 'Vulcan' HA
Deep magenta-pink flowers, with lovely, green Chinese lantern buds and seedpods. The flowers are edible too, great for scattering on salads.
020023 70 seeds £1.95
Sow: March-May and/or September. * June-September. H.90cm
☀️ 🌱 🌿 🌻 🌼 🌸 c&c



Matthiola incana 'Vintage Antique Mix' B
One of the most strongly scented plants there are with a delicious clove perfume.
Sow: May-July. * May-July the following year. H.45cm
120172 75 seeds £3.95
☀️ 🌱 🌿 🌻 🌼 🌸 c&c



Orlaya grandiflora (White Lace Flower) HA
 Beautiful mini handkerchiefs on delicate umbellifer flower heads.
 Sow: March-April or August-September. ☀ June-September. H.60cm
 020039 30 seeds £2.50
 ☀ 🌿 🌱 🌿 🌿 c&c

Tip of the Iceberg Collection

Think White Garden at Sissinghurst, summer wedding, drifts of snow. The longer I garden, the more I love white, particularly with green only. These two have been top of the pops for us for two decades.
 Sow: March or April. ☀ June-September. H.90cm
 140101 2 packets of seed £3.25
 ☀ 🌿 🌱



Coral Lace Collection

Orlaya provides the lace and the new colour forms of phlox and calendula, the coffee-coral tones and shapes. I adore this soft, yet not soppy cut flower collection.
 Sow: April-June. ☀ June-September. H.60cm
 140068 3 packets of seed £5.95
 ☀ 🌿 🌱 🌿 c&c

Papaver nudicaule B

Quite simply, the best possible poppy you can grow.
 Sow: February-March or June-August. Early spring sowings will flower the same year; later sowings the next year. ☀ May-September. H.45cm
 ☀ 🌿 🌱 🌿 c&c



P. nudicaule 'Champagne Bubbles Mix' F1 B
 A beautiful mix, flowering on and off all summer, with great chiffon cup flowers which last well once cut.
 156009 60 seeds £6.50



P. nudicaule 'Champagne Bubbles White' F1 B
 My desert island cut flower. They last brilliantly in the vase and flower for months in the garden.
 156011 60 seeds £6.50

Nigella (love-in-a-mist) HA

The classic cottage garden annual, which makes a fabulous cut flower AND filler foliage for any vase.
 Sow: Best direct sown, March-April and/or August-September. ☀ June-September. H.60cm
 ☀ 🌿 🌱 🌿 c&c

For nasturtiums see page 56



N. papillosa 'African Bride'
 Hugely glamorous. Like Nigella hispanica, its beautiful flowers are followed by equally dramatic and beautiful seedpods.
 020070 200 seeds £2.50



N. damascena 'Persian Jewels Mix'
 Lovely as a soft colour jumble in the cutting garden and vase.
 152006 425 seeds £1.95



N. damascena 'Miss Jekyll'
 This one is a lovely semi-double sky blue. A classic.
 020147 400 seeds £1.95 🌿



N. damascena 'Miss Jekyll Alba'
 Pure white, double flowers like a Tudor ruff, with pretty, pure green seedpods.
 020025 400 seeds £1.95



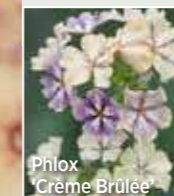
N. hispanica
 The most spectacular of the nigella family, with deep purple-blue petals and magnificent crimson crown seedpods.
 020026 60 seeds £1.95



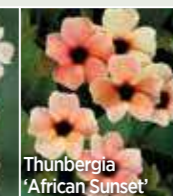
Arranged here with Phlox 'Cherry Caramel'

The Floral Wallpaper Collection

Two of the very best newcomers to the cut flower scene, giving beautiful colours and curves. Phlox 'Crème Brûlée' was one of my favourites in our trials several years ago and Thunbergia 'African Sunset' has flowers in all the colours of the sunset. Easy to grow, long-flowering and super long-lasting in the vase. Grow the thunbergia on a frame with the phlox all around its base. Sow: February-April. ☀ June-October. H.1.8m
 140063 2 packets of seed £5.50
 ☀ 🌿 🌱 🌿 🌿 c&c



Phlox 'Crème Brûlée'



Thunbergia 'African Sunset'

Phlox HHA

These are ideal for adding soft clouds of colour and scent.
 Sow: February-May. ☀ June-September. H.30cm
 ☀ 🌿 🌱 🌿 c&c



P. drummondii 'Crème Brûlée'
 Every flower a slightly different mix of coffee mousse with a wash of cassis. Subtle, smoky and unbelievably pretty.
 120182 175 seeds £2.25

Rudbeckia hirta (Black-eyed Susan) HHA/P

No autumn garden is complete without these glamorous, hardworking plants.

Sow: February-April. ☀ July-October. May overwinter, flower more strongly in second year and last a few years in sheltered locations. H.60cm

☀ 🌱 🌿 🌻 c&c



R. x hirta hybrida 'Cherokee Sunset'

Like crimson, rust goes with all my favourite colours and slots in so easily anywhere.

153056
75 seeds £5.25

R. hirta 'Cappuccino'

A reliable mahogany-coloured variety. This new hybrid is beautiful, with large flowers and the perfect colour.

030065
30 seeds £4.50



R. hirta 'Cherry Brandy'

A favourite of mine, with petals in the deepest red-conker crimson. A very long-flowering and long-lasting cut flower. Truly wonderful. H.60cm

030114
30 seeds £4.50

R. hirta 'Sahara'

One of my favourite seed trial discoveries, a beautiful mix of soft-coloured rudbeckias which flower right on into late autumn. A must in my garden. H.60cm

153007
50 seeds £4.50



Scabious (Pincushion flowers)

A famously, super long-flowering and prolific cut flower producer, with an excellent vase life.

Sow: February-April and/or August-October. ☀ June-October

☀ 🌱 🌿 🌻 c&c



S. atropurpurea 'Tall Double Mix' P/A

This mix contains pinks, mauves, whites and crimsons. Grows well on any soil and can flower from June until Christmas at Perch Hill. H.90cm

020034
55 seeds £1.95

S. atropurpurea 'Black Cat' P/A

Dark, rich velvet, crimson, mini pincushions on long wiry stems – a must. Bees, butterflies and hoverflies love them. H.90cm

020033
50 seeds £1.95

S. atropurpurea 'Summer Fruits' P/A

A summer berry mix of colours in this rich and hugely flowery annual scabious mix. Keep picking and they keep flowering. H.90cm

152036
75 seeds £3.50



S. caucasica 'Fama Deep Blue' P

The deepest, most radiant blue-mauve perennial scabious with whopper saucer flowers, stunning picked for inside. H.60cm

020092
20 seeds £2.95

S. caucasica 'Perfecta Blue' P

A well-known, reliable, large-flowered, blue-mauve perennial form, and a lovely soft colour. H.60cm

152028
50 seeds £2.95

S. stellata 'Sternkugel' HA

Grow this variety for its glamorous, papery globe seedheads which are beautiful fresh, as well as dry. Self-seeds gently. H.75cm

152024
50 seeds £2.25



new

Amaranthus 'Hot Biscuits'

Cosmos 'Xanthos'

Ipomoea lobata

Rudbeckia 'Sahara'

Tagetes 'Linnaeus Burning Embers'

Zinnia 'Queeny Lime Orange'

Toffee Apple Collection

There are some moments as a gardener when you suddenly see a collection of flowers and colours that you know were made to be together. This is just one of those. This lot were planted together last year in our Dutch Yard and we all adored their very long-lasting soft caramel colours, shapes and forms. ☀ July-October.

140102 6 packets of seed £23.25

☀ 🌱 🌿 c&c



Tagetes patula 'Linnaeus Burning Embers' HHA

Fantastic plant, edible flower, brilliant in a vase and invaluable companion plant. We grow this everywhere at Perch Hill.

Sow: March-May. ☀ June-October, 10-12 weeks from sowing. H.45cm
030121 50 seeds £2.50

☀ 🌱 🌿 c&c

Tagetes patula 'Strawberry Blonde' HHA

An effective companion plant which helps to protect against whitefly on indoor crops. AND, the flowers are edible.

Sow: February-April. ☀ June-October. H.30cm
153058 50 seeds £4.95

☀ 🌱 🌿 c&c



Salvia viridis 'Blue Monday' HA

A brilliantly coloured and invaluable foliage annual.

Used like lavender for edging your paths, it looks good from May to September and lasts superbly in water if stem ends are seared first.

Sow: February-April and/or August-September. ☀ May-September. H.45cm

020032 100 seeds £1.95

☀ 🌱 🌿 c&c



Tanacetum parthenum (Feverfew) P

Like love-in-a-mist and poppies, these are quintessentially country flowers, pretty and simple, yet elegant with it – and they last well over a week in a vase.

Sow: February-September. ☀ July-September. H.60cm

100051 2000 seeds £2.95

☀ 🌱 🌿 c&c



Arranged here with Scabious 'Black Cat' see page 26.



new

Xeranthemum annuum HHA

Loved by pollinators, this truly everlasting flower is beautiful picked fresh from the garden for mixed arrangements, or like strawflowers, hung upside down for a month to make them then last forever.

Sow: May-June. ☀ June-September. H.60cm

153090 250 seeds £1.95

☀ 🌱 🌿 c&c



Z. elegans 'Giant Dahlia Mix'
There is nothing nicer than the jumble of these beauties in a jug on the kitchen table. Spectacular, huge flowers.
030043
60 seeds £1.95

Z. elegans 'Cresto! Peach'
Loved by butterflies and bees, this new zinnia soft colour mix reminds me of a daisy-filled meadow in psychedelic colours. Fantastic in a vase.
H.75cm
153078
50 seeds £3.25

Z. elegans 'Zindarella Lilac'
I'm dead keen on this new form of zinnia in a sophisticated, soft salmon with rich contrasting hearts. It's exceptionally long flowering, a good month longer than others in the garden here.
153091
25 seeds £3.50 🏆

Deep Zinnia Mix
A rich range of colours: saturated reds, purples and crimsons, for a carnival feel. Perfect for mixing with dahlias.
030146 30 seeds £8.95

Reliable, long-flowering and brilliant for picking, it's hard to fault zinnias.



Z. elegans 'Benary's Giant Lime'
A very reliable, giant, green-flowered zinnia.
030144
20 seeds £3.75

Z. elegans 'Benary's Giant Salmon Rose'
A soft salmon that makes a great contrast to the dark and rich, and is truly beautiful with coffee and cream.
153080
30 seeds £4.95 🏆

Z. elegans 'Benary's Giant White'
Mix this elegant greeny-white variety with whopper flowers with cream and green for a calm, classy combination, in the garden or the vase.
153092
25 seeds £4.50

Z. elegans 'Queeny Lime Orange'
A super versatile flower which seems to go with almost everything. Lovely with crisp white and just as beautiful lighting up dark, rich reds.
153060
30 seeds £5.95

Z. elegans 'Queeny Lime Red'
My favourite zinnia with truly beautiful flowers in all its stages. It opens chartreuse green with a wash of smoky pink, and then the pink takes over.
030115
20 seeds £4.95 🏆

sweet pea collections

Grow sweet peas over arches, teepees and trellises. Plant them with your runner beans to attract lots of insect pollinators into the veg patch. Wherever you put them, you won't regret it. They will fill your life with colour and scent.

Sweet Peas (Lathyrus odoratus)

HA CLIMBER

Sow: October-April. 🌱 12-14 weeks from spring sowing or late May onwards from autumn sowing. H.1.8m



'High Scent'

'Royal White'

'Noel Sutton'

Clouds of Scent Sweet Pea Mix

Beautiful, very highly scented, and lovely together in the garden and vase.
040070 20 seeds £3.95



'Blue Velvet'

'Eclipse'

'Erehwon'

'Windsor'

'Winston Churchill'

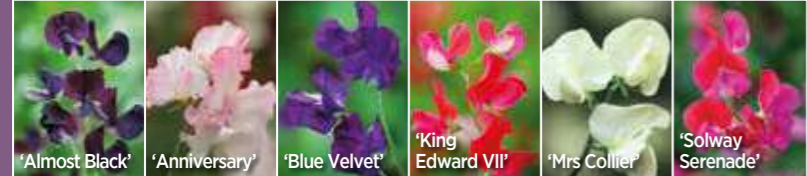
New Giants Sweet Pea Collection

Whopper stems, lots of flower heads and luscious colours and scents is the raison d'être of this sweet pea collection. They tower above others for arranging in a jug or vase.

140064 5 packets of seed £9.25



See page 35 for scent ratings



Ultimate Sweet Pea Collection

A wonderful selection of all the best long-stemmed, strongly scented varieties.
140026 6 packets of seed £12.95



Brilliant Buckets Sweet Pea Collection

Sweet peas don't only come in pastels - I love them in a rainbow, like stained glass, radiating out from their corner of the garden or house. These are all long-stemmed, large-flowered varieties with good scent.
154026 4 packets of seed £11.50



Harlequin Sweet Pea Mix

A wonderful bicoloured and highly-scented selection. For details of Seed Tin see website.
154025 20 seeds £2.50

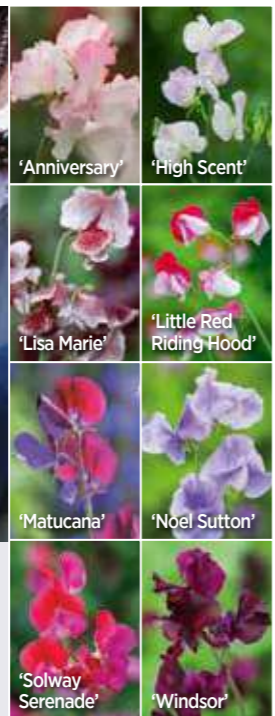


Favourite Jade Vase

These delicate, hand-blown vases are perfect for cut flowers.
Medium H.17cm, D.13cm
Large H.24cm, Dia.18cm
450131
Medium £29.95
Large £54.95

Full on Fragrance Sweet Pea Mix

A bright combination of our favourite carmine and pink sweet peas for filling your garden and house with scent in the summer.
040069 20 seeds £3.25



Buckets of Sweet Peas Collection

All the very best colours and the very best sweet peas in this super abundant, massively scented collection.
140054 8 packets of seed £16.95

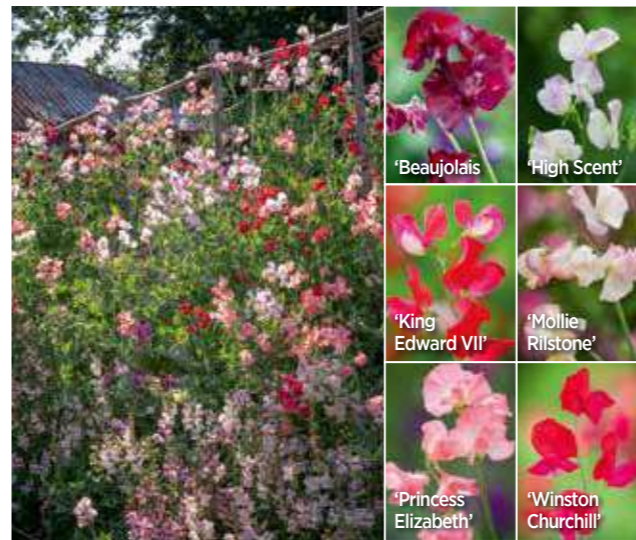


Jute Netting

Support your sweet peas, cobaea, beans and peas with this natural netting.
420189
1.8m² £5.95
1.8m² Set of 2 £10.95
2m x 5m £14.95

Reasons to grow Sweet Peas:

- on a teepee or arch, they give almost instant height and structure in your garden
- the more you pick, the more they flower
- place in a vase by your bed and you'll wake up in a fragrant cloud
- as legumes, they'll help fix nitrogen and so enrich your soil
- butterflies and bees love them



Avenue of Sweet Peas Collection

Concentrating on a warm, comforting palette, I love this mix of largely, newly bred varieties, with long stems and good scent. We had them in an avenue of sweet peas in the cutting garden all summer.
140084 6 packets of seed £11.25



Towering Teepees Sweet Pea Collection

Three of the brightest, richest and most strongly perfumed sweet peas for planting on a teepee or in an aisle down a scented walk.
140075 3 packets of seed £6.25



L. odoratus 'Anniversary'
SPENCER
White and the palest pink – spectacular, with long stems. It flowers for almost twice as long as others. Scent 7/10.
040014
20 seeds £2.50

L. odoratus 'Blue Velvet'
SPENCER
The richest, deep blue-purple, with a very long-flowering season and whopper stems. Scent 8/10.
040063
20 seeds £1.95

L. odoratus 'Dolly Varden'
HEIRLOOM BICOLOUR
An old-fashioned variety with beautiful lavender and white blooms. Scent 8/10.
154040
20 seeds £2.95

L. odoratus 'High Scent'
MODERN GRANDIFLORA
Large, showy flowers and excellent scent in white with beautiful purple feathering. Scent 10/10.
040054 20 seeds £2.50

Tutti Frutti Sweet Pea Collection
A brand new palette for us – apricot and peach, this super pretty Tutti Frutti has good scent and better than average sweet pea vase life.
140086 3 packets of seed £7.95

Delft Sweet Pea Collection
I love the simple blue and white decorated pottery of Delft. Arranged in a vase, and growing together in the garden, that's just what these remind me of. I love their classic calm.
140085 3 packets of seed £8.50

Keep picking your sweet peas and you can have beautiful, scented posies on your bedside table throughout the summer.



L. odoratus 'Judith Wilkinson' MODERN GRANDIFLORA
Dazzling sweet pea in the most incredible pink with lovely scent. A newfound love. Scent 9/10.
154027 20 seeds £3.50

L. odoratus 'Mammoth Lavender Blue' SPENCER
Mauve flowers are all the rage and this variety has large fragrant blooms which are excellent for cutting. Scent 7/10.
154033 20 seeds £2.50

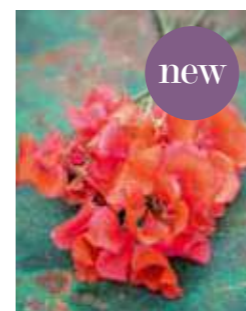
L. odoratus 'Matucana' HEIRLOOM GRANDIFLORA
A bicolour magenta and purple sweet pea, with the strongest scent. Scent 10/10.
040003
20 seeds £1.95

L. odoratus 'Midnight Blues' SPENCER
A wonderful mixture of deliciously scented sweet peas with strong, straight stems. Scent 7/10.
040067
20 seeds £2.95



Wedding Party Sweet Pea Collection
A mother of pearl coloured mix chosen with containers in mind. Add plenty of manure to the compost in deep pots and create a teepee as a climbing frame and then you've got beautifully scented flowers fit for any wedding or party. Have them growing right there, or pick to arrange.
154039 3 packets of seed £8.50

White Garden Sweet Pea Mix
For a white garden, summer evening party, or wedding – these three highly scented, long-stemmed sweet peas are the perfect thing. Fill your summer life with endless buckets, vases and jugs of this mix.
120201 20 seeds £3.50



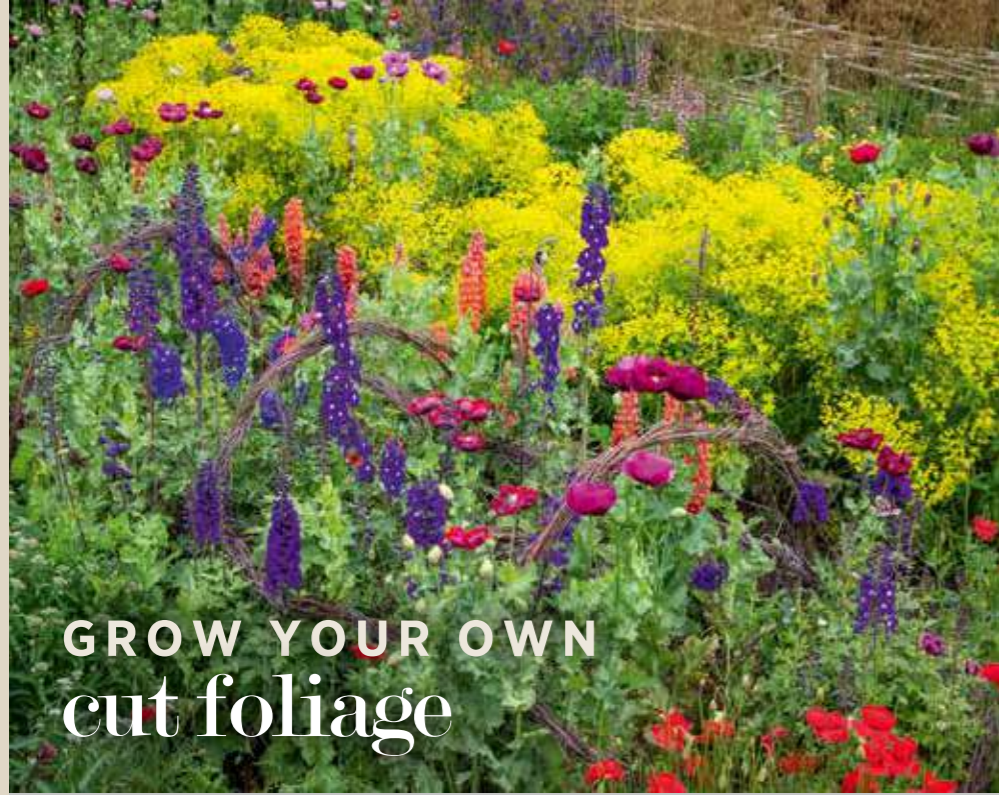
L. odoratus 'Mrs Collier' HEIRLOOM GRANDIFLORA
A lovely and very fragrant cream sweet pea. Scent 8/10.
040011 20 seeds £2.50

L. odoratus 'Prince of Orange' HEIRLOOM GRANDIFLORA
I've always been one for flame and orange – fabulous threaded through dark, rich colours for contrast. Scent 6/10.
154028 20 seeds £2.50

L. odoratus 'Scarlett' MODERN GRANDIFLORA
The richest, more saturated pink-red, not pillar box, but much classier, I absolutely loved this in our trials. Scent 8/10.
154029 20 seeds £2.95

L. odoratus 'Solway Serenade' INTERMEDIATE
Luscious, bicolour sweet pea, compact and long-flowering with a good scent. Scent 9/10.
154016 20 seeds £2.50

L. odoratus 'Turquoise Lagoon' SHIFTER
True lagoon blue, with a fantastic scent. The flowers start mauve and morph to turquoise as they age. Scent 9/10.
154000 20 seeds £2.95



GROW YOUR OWN cut foliage

It's easy to be tempted by growing lots of flowers, but for the perfect balance in any garden, pot or vase, you need foliage too. Here are my favourites.



Euphorbia oblongata P
Bright, acid-green flowers from spring until late autumn. My number one foliage plant. Must be picked with gloves on.
Sow: February-April or August-September. ✨ 16 weeks from a spring sowing or from May from an autumn sowing. H.45cm
020015 45 seeds £4.50
☀️ 🌿 🌱 🌿 c&c



Foliage Collection
The new and old combine perfectly here to give the best-ever foliage collection. I've grown and loved Bells of Ireland for nearly 30 years, but the fibre optic wand, Panicum 'Sparkling Fountain' is a new-found favourite. I passionately recommend both as a duo in the garden and as a foliage base for flowers in any vase.
140105 2 packets of seed £4.50
☀️ 🌿 🌱 🌿 c&c



Briza maxima (Greater Quaking Grass) HA
A beautiful grass with thin stems hung with pale green flowers, which look like raindrops as they catch the light.
Sow: February-May and/or August-September. ✨ June-August. H.45cm
020004 200 seeds £2.75
☀️ 🌿 🌱 🌿 c&c



Chasmanthium latifolium P
An easy and elegant plant to grow. Lovely cascading over a path at the front of a border, and in a vase. We're still picking this at Christmas. One of my favourite plants of 2020.
Sow: All year. ✨ July-August. H.90cm
157034 50 seeds £2.95
☀️ 🌿 🌱 🌿 c&c



Reseda luteola B
This is a favourite plant to give natural drama, shape and architecture to borders, pots and terraces, where, sown once, it will then self-sow.
Sow: May-July. ✨ June-September, the following year from sowing. H.1.2m
156019 500 seeds £2.95
☀️ 🌿 🌱 🌿 c&c



Panicum capillare 'Sparkling Fountain' HHA
Beautiful, airy grass which forms great puffs of green to edge a border. One of the best upper-storey foliage plants for pots and arranging.
Sow: February-May. ✨ July-October. H.75cm
153043 25 seeds £2.95
☀️ 🌿 🌱 🌿 c&c



Panicum violaceum (Red Millet) HA
A cut flower and pot filler which looks good all summer and provides an endless feast for Goldfinches and Blue Tits.
Sow: February-May. ✨ July-October. H.90cm
153006 100 seeds £1.95
☀️ 🌿 🌱 🌿 c&c

Grow Your Own Natural Christmas Collection

I'm passionate about feeding garden birds and all the more so when I can grow plants and seeds which they feast on directly. With this collection of sculptural 'everlasting' flowers, fruit and foliage, they look fabulous inside too (here painted bronze and silver for a natural Christmas) - you can't go wrong.
140106 5 packets of seed £14.95 ☀️ 🌿 🌱 🌿 c&c



cottage garden CLASSICS

Alcea rosea 'Giant Single Mixed' B

One of the best-ever cottage garden, and classic churchyard, favourites. If possible, give these a dose of copper mixture or chive tea (see website) to keep rust at bay.

Sow: March-May. ☀ June-August the following year. H.2.1m

157003 50 seeds £1.95



Lasts for ages
in a vase

Achillea millefolium 'Summer Pastels' P

A warm, soft mix of achilleas – invaluable cut flowers with long-lasting plateau blooms.

Sow: February-May and/or September-October.

☀ June-September. H.75cm

157014 50 seeds £3.95



Achillea ptarmica 'The Pearl' P

Perfect mini buttons as a border filler and cut flower with exceptional vase life.

Sow: February-May and/or September-October.

☀ June-September. H.60cm

157015 150 seeds £1.95



Echinacea purpurea 'White Swan' P

One of the best perennials to grow from seed, with a long season and plenty of cream flowers right into autumn.

Sow: February-March and/or August-September. ☀ June-September.

070006 50 seeds £2.25



Echinops ritro P

Steely blue drumstick pom poms, this flowers much of summer and autumn. The flowers are followed by long-lasting architectural seedpods.

Sow: February-May and/or August-September. ☀ July-September the following year. H.90cm

157016 65 seeds £2.95



Our classic cottage garden favourites; quick, cheap and easy garden fillers. Grow these stalwarts yourself, from seed, you won't be disappointed. Many make good cut flowers too.



Baptisia australis P

One of my favourite perennials for almost any colour border. It flowers in early summer and then, with flowers picked or deadheaded, it gives you excellent silvery foliage well into November.

Sow: August-September.

☀ May-June the following year. H.1.2m

157012 10 seeds £3.50



Berkheya purpurea P

An extraordinary plant with spiky, jagged leaves and amazing flowers that go on taking centre stage all summer.

Sow: February-June or September-October.

☀ June-August. H.60cm

070023 20 seeds £4.25



Echinacea purpurea 'Paradiso Mix' P

I love the simple Catherine-wheel flowers of this mixed colour pack of echinaceas. Brilliant cut flowers, with an exceptional vase life and long-flowering. As a perennial, these come back year-on-year.

Sow: February-March and/or August-September.

☀ June-September. H.75cm

157038 20 seeds £4.95



Eryngium alpinum P

A glamorous, blue-tinged, large-flowered sea holly, which makes a fantastic cut flower and pollinator plant.

Sow: March-April and/or August-September. ☀ July-September the following year. H.75cm

070069 50 seeds £2.95



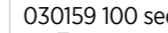
Erigeron karvinskianus 'Profusion' P TRAILING

Masses of daisy-like flowers with a hint of pink. Can flower for about nine months of the year and gently self-sows. Brilliant container plant too.

Sow: February-June.

☀ April-November. H.30cm

030159 100 seeds £2.95





Persicaria orientalis HA
Standing 5ft tall, with gentle curving stems like angel's fishing rods. This is a favourite at Perch Hill for gently self-seeding through our dahlias and for providing the perfect upper storey for flower arrangements, large and small.
Sow: February-March. ☀ July-November. H.1.2m
020149 30 seeds £2.95



Salvia patens TP
An excellent garden plant and cut flower in fantastic, Moroccan blue. A stalwart and old favourite, with no seed-grown flower equalling its intensity of blue. Will overwinter with protection.
Sow: February-April and/or August-September. ☀ June-November. H.60cm
030027 20 seeds £3.95



Growing here with *Thalictrum delavayi*, see below.

Selinum wallichianum P
With large, creamy white umbels similar to cow parsley and soft, fern-like foliage, this is an ideal plant for shady areas and very reliable. Excellent for its late summer flowering time too.
Sow: March-April and/or August-September. ☀ July-September. H.1.2m
157041 22 seeds £3.95



FLOWERS FOR shade

Angelica archangelica B
Beautiful architectural flowers and equally good seedpods. Green with contrasting crimson-pink stems. Self-sows.
Sow: May-June. ☀ May-July, the following year. H.2.1m
060060 100 seeds £1.95



Aquilegia vulgaris 'Lime Sorbet' P
This beautiful, pale limey-white aquilegia, or Granny's bonnet, is invaluable for flowering in May and early June when there is surprisingly little colour in the garden.
Sow: January-June. ☀ May-June, the following year. H.60cm
070055 25 seeds £1.95

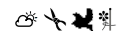


Good for drying

Astrantia major 'Ruby Cloud' P
An excellent garden plant and cut flower with zigzag petals like a Tudor ruff. Will grow happily in sun or light shade. Keep picking and it will keep flowering.
Sow: February-April and/or August-September. ☀ May-August, 20 weeks from spring sowing. H.60cm
070064 25 seeds £4.00



Thalictrum delavayi P
One of the most elegant additions for late summer and great for picking. Wear gloves when handling as foliage may irritate skin.
Sow: March-May and/or August-October. ☀ June-August. H.1.2m
157029 25 seeds £3.25



Verbena bonariensis P
Produces a haze of purple flowers at shoulder height in the autumn. It will shorten and broaden if you keep picking it - no bad thing. Sear stem ends to stop petal drop once cut. There is no better plant for lining a path. Self-sows.
Sow: March-May. ☀ June-November. H.1.8m
030066 250 seeds £1.95



Verbena rigida P
This small and more densely flowery version of purple verbena, flowers for four or five months at a stretch, and gently self-sows and spreads via underground runners. This is my favourite verbena in the garden and for cutting.
Sow: March-May. ☀ June-November, 16 weeks from sowing. H.60cm
030093 75 seeds £2.95



Digitalis (Foxglove)
For the ultimate English romance, pair foxgloves with alliums, see our website.



D. purpurea f. albiflora B
A lovely cream foxglove that makes a beautiful cut flower and garden plant. If you pick the king flower, you promote the production of more side shoots, and so, a longer flowering season. All parts of the plant are highly toxic if ingested.
Sow: May-July. ☀ May-July, the following year. H.1.2m
060006 340 seeds £1.95



D. purpurea 'Dalmatian Mixed' F1 B
I fell on this collection of foxgloves in our trial last summer, picking them and loving them jumbled up in a jug inside, as well as growing in the garden. The Dalmatian series is an F1 type, consistently long-flowering, even in its first year.
Sow: February-July. ☀ May-July (in the same year from a spring sowing; the following year from summer sowings). H.60cm
156013 25 seeds £5.95



foxgloves (DIGITALIS)

D. purpurea B

There's something honest and magnificent about a beautiful great armful and vase of our native wild foxgloves. I love growing them for parties, weddings and friends in May or June. And they are very easy!

Sow: May-July. ☀ May-July, the following year. H.1.5m
156020 1000 seeds £1.95

D. purpurea 'Sutton's Apricot' B

A lovely, soft pink foxglove that flowers at the same time as peonies in June, and looks beautiful with them. This is one of my absolute favourite flowers.

Sow: May-July. ☀ May-July, the following year. H.1.2m
060042 150 seeds £1.95



Foxglove Mix B

The two best May and June flowering foxgloves mixed up together for beauty in the garden and vase. Includes Digitalis purpurea 'Sutton's Apricot' and Digitalis purpurea f. albiflora.

Sow: March-July. ☀ Flowers 1 year from sowing seed. H.1.2m
156001 1000 seeds £1.95 🏆



new

Foxglove and Ammi Collection

Billowing powder puffs of white with columns of ivory piercing through, these look delicate, yet magnificent together in the garden and picked for a vase.

Sow foxgloves in summer and ammi in autumn for large plants flowering together early the following summer. ☀ May-August. H.1.2m
140121 2 packets of seed £2.25 ☀ 🌿 🌱 🌻

Foxgloves are classic cottage garden plants, a magnet for pollinators and wonderful cut for the vase.

Nicotianas are very long-flowering, half-hardy annuals, many with lovely evening scent. This moth-pollinated family grows well in sun or dappled shade.



D. purpurea 'Camelot Cream' F1 B

A cream, crimson-spotted foxglove that flowers within months of sowing and then for about six months at a stretch, three times longer than the usual foxglove.

Sow: February-July. ☀ May-October, 16 weeks from sowing. H.90cm
060024 20 seeds £4.50 🏆



D. parviflora P

Copper flowers are IT and never more so than when they are a perennial foxglove which flowers in the sun or shade from mid-spring to midsummer. These are stuffed full of nectar, like a skyscraper of cafes, one on top of another, for butterflies and bees.

Sow: January-June. ☀ May-July the following year. H.60cm
157035 300 seeds £5.95 🏆



D. lutea P

Delicate ivory to primrose spikes of bell flowers. A perennial foxglove, which is the perfect companion to Solomon's Seal in a shaded or partly shaded bed. We have this in a glade around our lawn and love it more and more every year.

Sow: February-June. ☀ May-July the following year. H.60cm
157036 1000 seeds £1.95 🏆



nicotiana

Nicotiana (Tobacco flower)

HHA
Sow: March-May. ☀ June-October, 12 weeks from sowing.

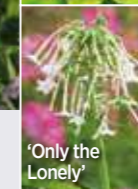
☀ 🌿 🌱 🌻 c&c

Nicotiana for Shade Collection

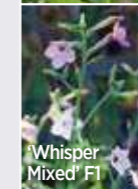
A marvellous trio for planting in sun or dappled shade, with the shorter Nicotiana 'Lime Green' at the front of the group. H.1.5m
140066 3 packets of seed £4.50



'Lime Green'



'Only the Lonely'



'Whisper Mixed' F1



Scented

N. alata 'Grandiflora'

The most highly scented tobacco plant you can grow. It has delicate, creamy white flowers and will wilt in bright sunlight, so best planted with a little shade. Brilliant for pots. H.60cm

030088 200 seeds £1.95



N. langsdorffii
As with several nicotianas, this grows perfectly in sun or shade, which is where we often have it, in pots by our shady, north-facing door. I love it in containers and cut so it resembles a delicate hovering butterfly above a contrasting bunch of summer cut flowers. H.1.5m
153081 500 seeds £1.95 🍷



N. sylvestris
'Only the Lonely' P/A
A tall, stately, tobacco plant with long, elegant white trumpet flowers. A fantastic cutting and border flower with lovely night scent. H.1.5m
030018 200 seeds £1.95 🍷



Nicotiana x sanderae
'Perfume Deep Purple' F1
Beautiful, deep purple tobacco plant for big drifts in the garden. Excellent cut for the house and with a lovely scent. H.60cm
030090 50 seeds £3.50



Nicotiana x hybrida
'Whisper Mixed' F1
This large-flowered, pink and white nicotiana is my must-have tobacco plant. It looks FANTASTIC for at least four months and has great disease resistance. Even better than *Nicotiana mutabilis* in our trials. H.90cm
030096 20 seeds £2.75



Cobaea (Cup and Saucer Vine) HHA CLIMBER
The perfect plant to pick up the climber colour baton after sweet peas. They flower long and hard from midsummer to winter.
Sow: January-March (sow early to guarantee flowering).
🌱 July-November, 20 weeks from sowing. H.3m
☀️ 🌿 🌱 🌱 🌱 c&c

Cobaea scandens
Truly lovely with buds in green-white, deepening to purple as they age. Hugely vigorous.
050002 20 seeds £2.95 🍷

Cobaea scandens f. Alba
One of my favourite plants growing in the white garden at Sissinghurst. There it covers arches over the path. This will flower almost 12 months of the year inside a greenhouse.
050001 20 seeds £3.75

Climbers are essential in my garden, and these mainly tender perennials grown as annuals will give an instant established feel. I love experimenting with them and use these climbers more and more at Perch Hill.



'Lime Green' here with 'Babybella' and 'Tinkerbell', see website



N. alata 'Lime Green'
Velvety, acid-green, trumpet flowers that mix with any colour. One of my absolute cutting garden staples. Keep it well-fed and watered, or to be extra safe, consider a dose of copper mixture to avoid mildew. H.60cm
030020 100 seeds £1.95 🍷



N. 'Babybella' F1
A rich and sophisticated, multi-headed new hybrid nicotiana, perfect as a border filler, a container plant and as an upper storey cut flower, its head hovering above the rest. H.60cm
153017 100 seeds £3.95



N. 'Tinkerbell' F1
Exquisite terracotta to crimson bells, with green petal reverse, perfect for an upper storey over the top of any mixed container or vase. Grows happily in sun or shade. H.75cm
030091 50 seeds £2.95

Ornamental Avenue Collection

A romping bundle of high energy beauty clambering all over any fence or shed like a Christmas swag in high summer.
🌱 July-October/November. H.3.6m
140109
3 packets of seed
£8.25



new



Grow Your Own Climbing Frame Collection

A chance pairing a few years ago, we now sow and plant atriplex in mid-spring, adding Ipomoea in May to clamber up the ready-made, homegrown and highly elegant atriplex climbing frame. This is companion planting at its best. No need for a bamboo cane! H.1.5m
140107
2 packets of seed
£2.95



new





Cardiospermum halicacabum
(Love-in-a-puff) HHA CLIMBER

I am obsessed with this climber. First come the delicate flowers, then the green balloon seedpods, each one holding a black seed inside marked with a perfect white heart – hence, its common name love-in-a-puff. Sow: March-May. ☀ July-October H.3m

153023 100 seeds £3.95



Ipomoea purpurea
'Grandpa Ott' HHA CLIMBER

The best morning glory for our climate, which grows happily and flowers prolifically all summer and early autumn.

Sow: March-May. ☀ July-October. H.2.1m

050007 50 seeds £1.95



Ipomoea lobata (Spanish Flag) HHA
CLIMBER

Quick-growing with cascades of flowers, starting flame-red at the tip and fading to cream. Looks spectacular for months, one of the best climbers you can grow.

Sow: March-May. ☀ July-October. H.3.6m

050004 20 seeds £1.95



Sarah Raven
Ultimate Flower
Meadow Mix

HA+HHA

This gives you a beautiful 'strawberries and cream' mix of white and pink, with a scattering of blue. Includes cosmos, cornflowers, poppies and ammi.

Sow: April-June.

☀ June-September, 8-10 weeks from sowing. H.1.2m

120162

6g mixed with buckwheat husks (to cover 2.5m x 1m or equivalent area) £4.50

Seed shaker 18g £11.95



SPECIAL OFFER

2 x 18g

Seed Shakers

£21.95



FLOWER
meadows

With all of these meadow and wildflower mixes, there's tons for birds, butterflies and bees – an ever-increasingly important thing. And you can pick and pick to your heart's content.



Lophospermum scandens
'Joan Loraine' HHA CLIMBER

We fell in love with this plant in 2019, when it grew up to my husband's workroom window at 30ft in just two years, and flowered until our first hard frost in February 2020.

Sow: February-May. ☀ June-October. H.2.4m (or more)

153001 30 seeds £3.50



Rhodochiton atrosanguineus
(Purple Bells)

HHA CLIMBER/TRAILING
The most asked about plant in the garden last summer, with mini hanging purple bells, complete with the clanger inside. Grow as a climber or trailer.

Sow: February-April.

☀ July-November. H.2.4m

153025 15 seeds £3.75



Thunbergia alata
'African Sunset' HHA

CLIMBER/TRAILING
My favourite climber to mix with apricots and purples to cover teepees and arches, or cascade out of pots, to soften and trail down the edges.

Sow: October-February.

☀ July-October. H.1.8m

153028 15 seeds £3.95



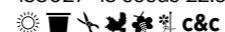
Thunbergia alata
'Superstar Orange' HHA

CLIMBER/TRAILING
Super bright Black-eyed Susan perfect for huge impact clambering over a pergola, fence or frame.

Sow: October-February.

☀ July-October. H.1.8m

153027 15 seeds £2.95



Cottage Garden
Mix HA+HHA

For those of us who like a jolly and bright mix of colours, sow this combination, which includes lots of traditional cottage garden favourites that will flower not just for weeks but months: zinnias, cosmos, malopes and much more.

Sow: April-June. ☀ July-October, 12-14 weeks from sowing.

H.90cm

120153

6g mixed with buckwheat husks (to cover 2.5m x 1m or equivalent area) £4.50

Seed shaker 18g £11.95



SPECIAL OFFER

2 x 18g

Seed Shakers

£21.95





Delft Blue and White Meadow HA+HHA

For a fabulous blue and white carpet of cornflowers, malope, ammi, convolvulus, cynoglossum, gypsophila and more.

Sow: April-June. ☀️ July-September, 10-12 weeks from sowing. H.90cm

120156 6g mixed with buckwheat husks (to cover 2.5m x 1m or equivalent area) £4.50

Seed shaker 18g £11.95

☀️ 🌱 🌿 🐝 🐛 c&c

SPECIAL OFFER

2 x 18g Seed Shakers £21.95



5 reasons to sow your own flower meadows:

- they're brilliant for any sunny area in the garden that you're not sure what to do with (and we have one for shade too)
- bees, butterflies and other pollinators love them
- they give fantastic wow factor, from just one bag of seed, flowering from June or July until September or October
- these mixes contain both annual and perennial seeds, to flower in succession
- you can pick countless vases of flowers from them

Sarah Raven Wildflower Meadow Mix P

A wildflower meadow that will look stunning for months, with pollen-rich and insect friendly flowers coming out and going over in succession. A truly beautiful selection of easy, reliable, perennial wildflowers for sowing direct into a sunny spot. Includes cowslip, oxeeye daisy, meadow buttercup, selfheal and many more.

Sow: April-May and/or September-October. ☀️ March-October, most the following year. H.60cm

120190

10g (to cover 2m x 5m or equivalent area) £11.50

Seed shaker 18g £18.95

100g of wildflower (20%) and grass seed (80%) mix (to cover 12.5m x 12.5m or equivalent area) £19.95

☀️ 🌱 🌿 🐝 🐛 c&c



Country Lane Mix P + B

Go for a walk in the countryside and you'll see this beautiful combination of flowers in succession from spring to autumn. The tried and tested selection here includes our best garden-worthy native wildflowers, see website for details. The 100g mix also contains a range of grass species.

Sow: August-October. ☀️ April-September. H.1.5m

120170 10g of pure wildflower seed (to cover 2.5m x 2.5m or equivalent area) £9.95

100g of wildflower (20%) and grass seed (80%) mix (to cover 12.5m x 12.5m or equivalent area) £19.95

☀️ 🌱 🌿 🐝 🐛 c&c



Jewel Cut Flower Mix HA+HHA

Intense, bright, saturated colours – pinks, oranges, yellows and purples, set against a rich background of ruby, crimson and purple, which reminds me of a stained glass window as it grows. Contains compact and delicate plants such as silenes and Californian poppies with pillars of atriplex for height.

Sow: April-June. ☀️ July-October, 12-14 weeks from sowing. H.45cm

120166 6g mixed with buckwheat husks (to cover 2.5m x 1m or equivalent area) £4.50

Seed Shaker 18g £12.95

SPECIAL OFFER 2 x 18g Seed Shakers £23.50

☀️ 🌱 🌿 🐝 🐛 c&c

Flowers for Shady Places HA+HHA+B

If you're not sure what to do with a shady area or a piece of ground near shrubs or trees, this mix will be just the thing. A pretty and natural-looking mix of lilac, mauve and white, including foxgloves, alyssum, malva, forget-me-nots and nemophila.

Sow: March-May. ☀️ June-September, 10-12 weeks from sowing, and from spring the following year. H.75cm

120160

6g mixed with buckwheat husks (to cover 2.5m x 1m or equivalent area) £4.50

Seed shaker 18g £11.95

☀️ 🌱 🌿 🐝 🐛 c&c

SPECIAL OFFER

2 x 18g Seed Shakers £21.95





A succession of flowers from spring to autumn

Pollinator Meadow

HA+HHA+P+B

A succession of flowers from spring (with forget-me-nots) to summer (phacelia is super-charged for bees) and autumn (with coreopsis and cosmos). If you want to do your bit for biodiversity, this is the perfect thing; includes marvel of peru, sweet william, viper's bugloss, dame's rocket, cornflowers, wallflowers, coreopsis, stocks, annual lupins, dill, honesty, yarrow, cosmos, foxgloves and many more.

Sow: April-June. ☀ June-October, the following year and from spring in subsequent years. H.75cm
120189
 6g mixed with buckwheat husks (to cover 3m x 1m or equivalent area) £4.50
 ☀ 🌿 🌻 🌻 🌻 c&c



Centaurea cyanus (Wild Cornflower) HA

Quick and easy, colourful British favourites. Ideal for naturalising, and will attract bees and butterflies.

Sow: March-May and/or August-September. ☀ June-August. H.90cm
120164 150 seeds £1.95
 ☀ 🌿 🌻 🌻 🌻 c&c



Daucus carota (Wild Carrot) B

Like a compact form of ammi, this delicate umbel flowers solidly all summer with seedheads nearly as good as the lacy flowers. A garden-worthy wildflower for borders and for planting as plugs into grass. A good cut flower.

Sow: September-April. ☀ June-September, the following year. H.90cm
120187 100 seeds £1.95
 ☀ 🌿 🌻 🌻 🌻 c&c



Leucanthemum vulgare P

The classic oxeye daisy to brighten dull areas of rough grass, meadow or orchard.

Sow: March-May and/or September. ☀ May-August. H.90cm
120139 750 seeds £1.95
 ☀ 🌿 🌻 🌻 🌻 c&c



Lychnis flos-cuculi 'White Robin' P

If I had to name my top five favourite wildflowers, Ragged Robin would be up there, especially this pure white form. It makes a pretty and elegant cut flower too.

Sow: March-July and/or September-October. ☀ June-August, the following year if summer or autumn sown. H.75cm
120193 200 seeds £2.50
 ☀ 🌿 🌻 🌻 🌻 c&c



Bluebell Woodland Mix P + B

A tried and tested perennial wildflower mix suitable for shade below a hedge or trees. The mix includes bluebells, cow parsley, foxgloves, nettle-leaved bellflower, perforate St John's wort, red campion, teasel, wild angelica, wild garlic and many more.

The 100g mix also contains a range of grass species.
 Sow: August-October. ☀ April-September. H.1.5m
120169 10g of pure wildflower seed (to cover 2.5m x 2.5m or equivalent area) £9.95
 100g of wildflower (20%) and grass seed (80%) mix (to cover 12.5m x 12.5m or equivalent area) £19.95
 ☁ 🌿 🌻 🌻 🌻



Meadow for Birds HA+B+P

One of my new obsessions is sowing and growing and then leaving the plants that garden birds love, to run to seed, for them to feast on. Your garden will become a wild and free aviary, a truly marvellous thing. A mix of 18 annuals, perennials and biennials including including perennial flax, wallflowers, honesty, soapwort, silene and many more.

Sow: March-June and/or September-November. ☀ June-October, the following year and from spring in subsequent years. H.75cm
120188 6g mixed with buckwheat husks (to cover 3m x 1m or equivalent area) £4.50
 ☀ 🌿 🌻 🌻 🌻 c&c



Phacelia tanacetifolia HA

A very popular green manure, which when sown in a block not only benefits the soil when dug in, but looks beautiful and the bees love it. I also use it as a cut flower.

Sow: March-June and/or August-October. ☀ May-September. H.45cm
120001 5000 seeds £2.95
 ☀ 🌿 🌻 🌻 c&c



Pilosella aurantiaca (Fox and Cubs) P

One of our most beautiful, and a long-standing favourite wildflower for meadows and naturalistic containers. A truly lovely and easy-to-grow British native, and pretty, cut for a vase with cow-parsley and grasses.

Sow: All year round. ☀ June-September. H.30cm
120192 300 seeds £3.50
 ☀ 🌿 🌻 🌻 🌻 c&c



Rhinanthus minor (Yellow Rattle) HA

This is the key to success with any wildflower meadow. It is parasitical on grasses, thereby giving wildflowers a chance to compete.

Sow: September-November. ☀ June-September. H.45cm
120105 400 seeds £6.50
 ☀ 🌿 🌻 🌻 c&c



Silene dioica (Red Campion) B

One of my favourite wildflowers which is definitely garden-worthy for introducing (as plugs) into your lawn, in dappled shade under shrubs, trees and at the base of hedges.

Sow: March-May and/or August-October. ☀ May-November. H.75cm
120186 200 seeds £1.95
 ☀ 🌿 🌻 🌻 c&c



SEEDS FOR CONTAINERS



Brachyscome multifida 'Blue and White mix' HHA

For a pot full of daisies to flower all summer and autumn, this is the plant – a mix of blue and white for a soft and pretty contrast.
Sow: February-April. ☀ June-October H.30cm
153029 250 seeds £1.95



Erigeron karvinskianus 'Profusion' P

Brilliant container plant, masses of daisy-like flowers with a hint of pink. Can flower for about nine months of the year, gently self-sows.
Sow: February-June. ☀ April-November. H.30cm
030159 100 seeds £2.95



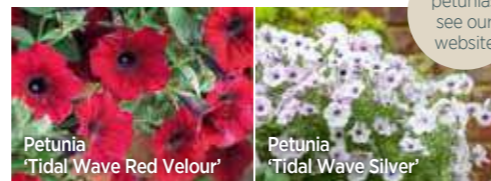
new

Scented

Isotoma axillaris 'Gemini Blue' P/A

I love the isotomas with their starry flowers and soft scents, particularly this one, flowering for up to six months.
Sow: March-May. ☀ June-October H.30cm
157054 50 seeds £7.25

For petunias see our website



Petunia 'Tidal Wave Red Velour'

Petunia 'Tidal Wave Silver'



EDIBLE flowers

grow to sprinkle on your salads – once you start, a salad looks bare without them.



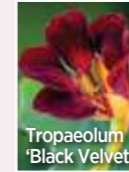
Heartsease (Viola tricolor)



Calendula 'Indian Prince'



Borago officinalis



Tropaeolum 'Black Velvet'

All Year Edible Flower Collection

Hearts Ease for winter to spring, Calendula 'Indian Prince' for spring to summer, borago for summer and Nasturtium 'Black Velvet' for summer to autumn. ☀ All year
080110 4 packets of seed £4.95



new



Borago Blue



Calendula 'Sunset Buff'



Tagetes 'Linnaeus Burning Embers'



Tropaeolum 'Purple Emperor'



Heartsease (Viola tricolor)

The Summer Edible Flowers Collection

Scatter over ice cream, line them up round a cake, drop them into salad – every one of these edible flowers (and leaves) are super-handsome and easy to grow. They're all loved by pollinators and the seeds are great for garden birds too.
☀ June-October
140120 6 packets of seed £8.50

I know it's tempting to go to the garden centre to choose things already in flower, but it's much cheaper and more rewarding to grow your own from seed, filling your containers with beauty all summer and autumn.



new

Pelargonium 'Designer White' (Zonal) TP EVERGREEN

This pot pelargonium is almost always in flower. We have individual plants of it in pots lining the sides of a path and then mass it in one huge pot to radiate light into a dull corner.
Sow: September-February. ☀ June-November. H.60cm
153093 6 seeds £6.25



new

Pelargonium 'Horizon Appleblossom' F1 (Zonal) TP

Wonderful grouped together in pots where the soft pink flowers will go on strongly from early summer right through autumn.
Sow: September-February. ☀ June-November. H.30cm
153094 6 seeds £4.50



new

Polyanthus 'Stella Champagne' F1 P

Soft-coloured, curvy petalled, luscious textured perennial polyanthus which I had on my doorstep and LOVED. Flowers are also edible.
Sow: February-April. ☀ February-April, the following year H.30cm
157046 10 seeds £4.25



Good for winter

Saxifraga x arendsii 'Flower Carpet' P EVERGREEN

THE winter window box or table centre flower to cheer all the way through to late spring. A tough, hardy, reliable stalwart, and super pretty with it.
Sow: April-September. ☀ March-July, the following year. H.15cm
157044 250 seeds £2.50



Anchusa azurea 'Dropmore' P

One of my favourite edible flowers for salads and ice cubes. Easy to grow from seed and makes a lovely cut flower.
060001 20 seeds £2.50
Sow: February-June and/or August-September. ☀ May-July. H.90cm



For Borago White see website.

Borago officinalis (Borage) HA

The classic blue flower to decorate Pimms, summer drinks (by freezing it in ice cubes) and puddings.
080040 60 seeds £1.95
Sow: March-July. ☀ June-September, 10-12 weeks from spring sowing. H.60cm



Calendula 'Indian Prince' HA

Deep orange with buds and backs of petals in crimson. I use them in brilliantly coloured arrangements and put the petals in salads.
Sow: March-May and/or August-September. ☀ June-August, 8-10 weeks from spring sowing. H.45cm
020007 125 seeds £1.95



Tagetes lucida (Sweet Mace) HHA

With this tagetes, you have tarragon flavour pretty instantly and easily in your garden. Scatter the orange flowers and young leaves over salad for colour and taste.
Sow: February-June. ☀ July-September. H.75cm
100050 100 seeds £2.75



T. majus 'Empress of India'

CLIMBING/TRAILING

With dark green and crimson leaves, and ruby-orange flowers, this climbing and trailing nasturtium is a firm favourite.

158000 25 seeds £1.95

Tropaeolum (Nasturtium) HHA

Nasturtiums are a passion of mine. Beautiful, edible and cutting flowers with great shapes and new colours. Easy-to-grow garden plants which self-seed in the most unpromising places. For more nasturtiums, see our website.

Sow: March-July. ☀ July-October. H. up to 45cm, trailing up to 1.8m

☀ ☀ ✂ 🌱 🌱 🌱 🌱 🌱 🌱 🌱 c&c



new

Sarah Raven Nasturtium Mix

Nasturtiums in the richest, burnt amber, Persian carpet colours. Great in pots or front of borders, I love picking these for jam jars and vases, and we scatter the flowers and baby leaves on the top of our late summer salad bowls. They're a great multi-purpose mix.

120198 30 seeds £4.25



'Black Velvet'

'Cherry Rose Jewel'

'Empress of India'

'Whirlybird Tangerine'



V. cornuta 'Phantom' F1

This scented variety is my favourite pretty and delicate, winter and spring-flowering viola, perfect for a window ledge or outdoor doorstep pots.

156012 30 seeds £4.50

Violas HA (which may last a few seasons)

Violas are happy in smaller pots and window boxes and all are edible – use them to decorate salads and puddings.

Sow: March-May and/or August-October.

☀ September-June, starting 12-16 weeks from sowing. H.15cm

☀ ☀ ✂ 🌱 🌱 🌱 🌱 🌱 🌱 c&c



new

V. cornuta 'Red Blotch'

Despite the unpredictable weather last spring, this was forever flowering, with pretty velvet crimson flowers decorated with a richer blotch at their heart. Easy, long-flowering, and of course, edible – this has become one of our must-grows for spring.

157042 20 seeds £5.25



Heartsease (Viola tricolor)

new



'Tiger Eye Red' F1

'Phantom' F1

Sarah Raven Favourite Viola Collection

My three favourite violas guaranteed to flower with great style and elegance almost all year round. Keep picking these for mini vases and scattering over salads and they'll keep flowering. Ideal for successional sowing.

140122

3 packets of seed £15.75



T. majus 'Black Velvet'

TRAILING

Sumptuous, glamorous, rich, almost-black nasturtium. Sow this in late spring for summer and autumn picking. It will lightly self-sow.

080042

20 seeds £2.25



T. minus 'Ladybird Rose'

Stunning, unusual colour form of the petite nasturtium which makes an exotic cut flower and container plant for an ornamental veg garden or window box.

153041

25 seeds £2.95



T. majus 'Alaska'

Very quick growing, with a mixed colour cascade of flowers. Excellent for flower beds to bring in good insects to control the bad.

050005

30 seeds £2.25



T. majus 'Cherry Rose Jewel'

TRAILING

A spectacular, zingy, bright nasturtium with edible flowers, leaves, buds and seedpods. A compact variety.

020136

25 seeds £2.25



T. majus 'Gleam Salmon'

TRAILING

A beautifully coloured nasturtium and a marvellous cut flower, with the curves to every flower and stem. It's also delicious, peppery and punchy.

152034

30 seeds £2.50



V. cornuta 'Tiger Eye Red' F1

I always loved Tiger's Eye stones as a girl and I love these sultry, exotic, glamorous viola flowers just as much. This truly is one of my favourite discoveries of our 2019 trials.

156014 30 seeds £5.95



new

V. 'Sorbet Honeybee' F1

Mahogany flowers have long been some of my favourites, particularly when that colour is brightened and heightened by gold as it is in this beautiful pansy. The more you pick, the more this flowers.

157053 30 seeds £5.75



new

V. x wittrockiana 'Frizzle Sizzle Burgundy'

Like a crazy ruffled velvet hat, these pansies are quite something. With longer stems than most violas, pick them for a showy vase, or have them in pots down a table centre.

157052 20 seeds £4.95



Heartsease (Viola tricolor)

Keep picking these wild pansy flowers to decorate salads and puddings for four or five months at a stretch.

080023 100 seeds £1.95

GROW YOUR OWN veg & salad



The vegetable garden at Perch Hill in early autumn.



Salsola soda (Monk's Beard) HA
 Very popular in Italy, agretti is similar to samphire but easier to grow. It's delicious as a wilted green. Keep picking to get it at its best.
 Sow: February-June.
 Harvest: May-September.
 H.60cm
110441 100 seeds £2.50
 ☀️ 🗑️ 🌿 c&c



Beetroot Collection HA

Includes 1 pack each of Beetroot 'Boltardy', 'Burpees Golden' and 'Chioggia'. Sow: March-July. Harvest: June-October. H.30cm
110266 3 packets of seed £4.75
 ☀️ 🗑️ 🌿



Beetroot 'Boltardy' HA
 A favourite sweet variety, which has provided me with the bulk of my beetroot and baby salad leaves for years. It is bolt resistant, so you can sow it throughout the season.
 Sow: March-July.
 Harvest: June-October.
 H.30cm
110260 250 seeds £2.25
 ☀️ 🗑️ 🌿



Beetroot 'Chioggia' HA
 A beautiful deep pink skinned, stripy pink and white-fleshed beetroot with a sweet flavour. It looks spectacular in salads.
 Sow: March-July.
 Harvest: June-October.
 H.30cm
110109 250 seeds £1.95
 ☀️ 🗑️ 🌿



Borlotti Bean 'Lingua de Fuoco 2' ORGANIC CLIMBING HHA
 This borlotti bean variety is one suited to our cooler climate. Eat the pods small and tender or allow them to reach full size and eat the beans inside.
 Sow: March-June.
 Harvest: August-October.
 H.2.1m
110010 75 seeds £4.50
 ☀️ 🌿 🗑️ 🌿

I love wandering out to my veg garden. It's my own carefully stocked greengrocer, where I can harvest my lunch and supper. Life would not be the same without even a few homegrown salads, herbs and veg.



Artichoke 'Violet de Provence' P
 A beautiful and early globe artichoke. We start eating these in late May. If you cut the whole plant down to the ground (leaves and all), they will crop again 6-8 weeks later.
 Sow: February-September.
 Harvest: June-September the following year. H.1.5m
110025 30 seeds £1.95
 ☀️ 🗑️ 🌿 🌿



Aubergine 'MoneyMaker No. 2' HHA
 Good, early variety with tasty fruits. It is tolerant of lower temperatures, so it grows indoors or out. Plant it with basil to increase the plant's pollination and general health.
 Sow: February-March.
 Harvest: July-October. H.60cm
110063 50 seeds £5.25
 ☀️ 🗑️ 🌿



Aubergine 'Slim Jim' HHA
 A prolific producer of handfuls of long, thin fruits. These smaller aubergines are perfect for our climate as they produce and ripen reliably. In the south of England, these can be grown inside or out.
 Sow: February-March.
 Harvest: July-October. H.60cm
110068 50 seeds £2.25
 ☀️ 🗑️ 🌿



New Aubergine Collection HHA

These two make the perfect aubergine pairing. 'Slim Jim' is quick to cook and so ideal for curries and stir-fries, while the fat-bellied 'MoneyMaker No.2' is perfect for slow roasting and drenching in tahini, Middle Eastern style, or slicing for melanzane parmigiana.
 Harvest: July-October. H.60cm
140110 2 packets of seed £7.25 ☀️ 🗑️ 🌿



Climbing French Bean 'Blue Lake' CLIMBING HHA
 A wonderfully prolific climbing bean, with a long, steady cropping pattern of tender and tasty green beans. Of all the beans I grow, this is the slowest to get tough and stringy. Hugely recommended.
 Sow: April-July.
 Harvest: June-October. H.2.1m
110258 100 seeds £2.75
 ☀️ 🌿 🗑️ c&c



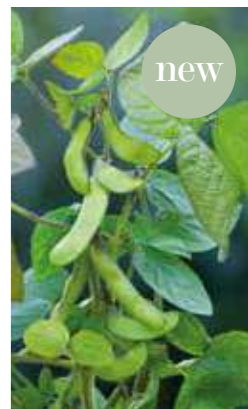
Dwarf French Bean 'Maxi' HHA
 A really prolific and healthy variety with tasty, stringless beans which form above the leaves for easy harvesting.
 Sow: April-July.
 Harvest: June-October. H.45cm
110451 75 seeds £3.50
 ☀️ 🗑️ 🌿



Dwarf French Bean 'Purple Teepee' HHA
 I love growing unusual-coloured veg to give brilliant contrast as well as delicious things to eat. 'Purple Teepee' is long-cropping with crimson-black beans that are tender and tasty.
 Sow: April-July.
 Harvest: June-October. H.45cm
110054 125 seeds £2.50
 ☀️ 🗑️ 🌿 c&c



Dwarf French Bean 'Red Swan' HHA
 A pretty pinky-red, with tender and tasty round beans. This is particularly long-cropping, the more you pick, the more they produce.
 Sow: April-July.
 Harvest: June-October. H.45cm
110378 100 seeds £5.50
 ☀️ 🗑️ 🌿 c&c



Edamame Bean 'Fisheby V' HHA
 Edamame are a top superfood, rich in vitamins and minerals and a valuable source of good protein. This is a reliable variety for our climate. Harvest the whole plant in one go, so do successional sowing for best results.
 Sow: April-June. Harvest: August-November. H.60cm
110452 30 seeds £2.95
 ☀️ 🌿 🗑️

Broad Beans HA

If you have plenty of space, you've got to grow broad beans. They're easy, incredibly hardy and eaten small and tender, totally delicious.

Sow: February-April and/or September-October.
Harvest: 8-10 weeks from spring sowing. H.1.2m

☀️ 🌱 🌿 🍷 c&c



Broad Bean 'Crimson-flowered'

The most ornamental broad bean, perfect for mixing into a parterre and flower borders, as well as veg garden, with deep crimson, scented flowers.

110358 50 seeds £2.50



Broad Bean 'Masterpiece Green Longpod'

A hugely prolific and tasty broad bean, which is my favourite for harvesting, blanching and freezing.

110313 45 seeds £2.50 🍷



Broad Bean 'Stereo'

The best-tasting, small, tender broad bean, excellent raw or cooked. Bred for thin skins so you won't ever need to skin them. Best for late winter or early spring sowing. Highly recommended.

110111 35 seeds £2.50



Broad Bean 'Superaguadulce' ORGANIC

The hardiest broad bean there is, for sowing any time from autumn until spring. It's highly prolific and easy to grow, and yet remains one of the most delicious in terms of flavour and texture.

110001 35 seeds £3.75

Runner Beans CLIMBING HHA

All runners are prolific and the flowers have a very beany flavour - ideal for scattering over salad or providing substance to a tabbouleh.

Sow: April-July. Harvest: 14-16 weeks from sowing. H.2.1m

☀️ 🌱 🌿 🍷 c&c



Runner Bean 'Aurora'

I grow this as much for the unusual and beautiful, soft pink coral flowers as for the tasty tender beans. The flowers are edible too - deliciously beany for adding to rice and leaf salads.

110368 30 seeds £3.95



Dwarf Runner Bean 'Hestia'

A dwarf bean, elegant and pretty in a window box or large container; creating lovely lines with its twisting and turning stems. Then of course, there are its tasty edible flowers AND runner beans.

H.45cm
110370 40 seeds £4.95 🍷



'Polestar' growing here with 'White Lady'

Runner Bean 'Polestar'

Stringless, tasty and tender. Just one sowing of this will give you plenty of beans for weeks at a stretch, or do two sowings (one early, one late) for picking in summer and autumn. The scarlet flowers are delicious too.

110004 40 seeds £2.75



Runner Bean 'White Lady'

A lovely runner bean, tasty and tender with pure white prolific flowers that taste delicious too. Excellent to grow with 'Polestar' and/or 'Aurora'.

110187 40 seeds £3.25 🍷



Broccoli 'Brokali Apollo' F1 HA

A cross between standard and Chinese broccoli, with long, tender and sweet stems, similar to sprouting broccoli and just as delicious, in salads, stir-fries or simply steamed.

Sow: March-May.
Harvest: August-December. H.30cm

110379 25 seeds £5.50

☀️ 🌱 🌿 🍷 c&c



For Purple Sprouting Broccoli, see our website.

Broccoli raab (Cima di Rapa) HA

A green-budded variety of sprouting broccoli, which crops more heavily and more quickly than Purple Sprouting. Hardy, prolific and very tasty.

Sow: February-April.
Harvest: September-November. H.45cm

110247 1000 seeds £1.95

☀️ 🌱 🌿 🍷 c&c



Chard 'Bright Lights' HA

Use brilliant-coloured baby leaves raw in salad and the larger leaves cooked like spinach. You'll only need one or two sowings for growing all year, as this variety is slow to bolt.

Sow: March-July. Harvest: All year. H.45cm

080097 100 seeds £1.95

☀️ 🌱 🌿 🍷 c&c



Chard 'White Silver 2' ORGANIC HA

This has great flavour and looks wonderful with its chunky, white stems. A hugely long-producing and worthwhile plant.

Sow: February-March. Harvest: All year. H.45cm

110016 175 seeds £2.50

☀️ 🌱 🌿 🍷 c&c

For more chilli varieties see our website.



Chilli 'Hungarian Hot Wax' HHA

This is one of the best, quick and very heavy-producing chillies for our cool climate. The fruits start green (mild) and ripen to red (hot).

Sow: February-March.
Harvest: July-October. H.60cm

110017 35 seeds £3.95

☀️ 🌱 🌿 🍷



Chilli Pepper 'Hot Cayenne' HHA

Easy to grow and heavy cropping, this excelled in our chilli pot and garden trial. It's a highly ornamental chilli with an elegant twist to its hanging jewel-like fruit.

Sow: February-March.
Harvest: July-October. H.90cm

110424 20 seeds £1.95

☀️ 🌱 🌿 🍷



Pepper 'Padron' HHA

The classic Spanish tapas pepper. As a prolific producer, keep harvesting and more will form. They're the epitome of summer. Sow: February-March. Harvest: July-October. H.60cm

110442 20 seeds £3.50

☀️ 🌱 🌿



Sweet Pepper 'Friggitello' F1 HHA

A new Italian F1 variety of red pepper, which is quick-cropping, juicy and heavy producing. We harvested an abundance of sweet, tender peppers from August to November. Sow: February-March. Harvest: July-October. H.75cm

110420 50 seeds £1.50

☀️ 🌱 🌿 🍷



Beetroot 'Boltardy'

Carrot 'Nantes 5'

Chard 'Bright Lights'

French Bean 'Blue Lake'

Kale 'Nero di Toscana'



Carrot tape is BRILLIANT

Carrot 'Nantes 5' Seed Tape HA

This makes sowing and growing these fiddly seeds so easy. This is now our standard seed system for carrots, rocket (see page 73) and spring onions (see page 66). Just lay it out and water.

110396 6m/580 seeds £3.50



Easy Summer Veg Collection

Five of my favourite vegetables to grow at home. Easy, healthy, colourful and delicious.

Sow: March-July. Harvest: July-March the following year
140047 5 packets of seed £7.95

☀️ 🌱 🍷 c&c

3 reasons to grow carrots:

- they are sweeter and crunchier when freshly picked as opposed to shop bought
- easy to grow if sown in well-drained soil or in a raised bed
- you can pick them at their tastiest, mini size



Carrot 'Harlequin Mix' F1 HA

An early Nantes variety ranging in colour from white to yellow, orange and purple.

Sow: March-July.
Harvest: 8-12 weeks from sowing.

060059
500 seeds £2.50



For seed tape, see above

Carrot 'Nantes 5' ORGANIC HA

An early carrot, whose roots are good, short and easy to grow. It is sweet and tasty and quick to crop.

Sow: March-July.
Harvest: 8-12 weeks from sowing.

110124 500 seeds £1.95



Carrot 'Purple Sun' F1 HA

The most handsome of all carrots, with the colours of a blood orange. They look and taste great.

Sow: March-July.
Harvest: 8-12 weeks from sowing.

110373 350 seeds £3.95



Courgette 'All Green Bush'

A very reliable quick-growing, dark-skinned variety. Compact, so perfect for pots.

110347 10 seeds £1.95



Courgette 'Defender' F1

This is a high-yielding courgette, which crops over a long period. Noticeable for its flavour and resistance to mildew. A good variety for courgette flowers.

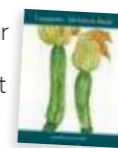
110134 20 seeds £3.95 🏆

Courgettes HHA

Aim to do two sowings of courgettes, splitting your packets, so that you have fruit to pick for four to five months at a stretch. Sow two or three different colours, so they look as good as they taste.

Sow: March-June. Harvest: July-October. H.60cm

☀️ 🌱 🍷 c&c



courgettes

Multi-Coloured Courgette Collection

Looks wonderful in the garden and on the plate.
110267 3 packets of seed £4.75



Courgette 'Romanesco'

A wonderful courgette with distinctive ribbed stems. Excellent nutty flavour and texture, never turning watery, even when quite large.

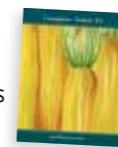
110242 20 seeds £1.95 🏆



Courgette 'Soleil' F1

A highly productive variety with an excellent flavour. Good raw or cooked. The skin is slightly thicker than on other colour varieties, so eat these small.

110269 8 seeds £2.50



Sweetcorn 'Sweet Nugget' F1 HHA

This is a tried and tested, mid-season 'super sweet' variety with a good yield of long, uniform cobs.

Sow: April-May.
Harvest: May-September. H.1.8m

110159
50 seeds £3.25 ☀️



Sweetcorn 'Swift' F1 HHA

A reliable, tasty and quick to harvest from seed sweetcorn, which has super sweet and delicious kernels.

Sow: April-June. Harvest: July-September. H.1.8m

110361
35 seeds £2.50 🏆



kale

Cucumber 'La Diva'
A brilliant, sweet mini cucumber, the size of a large cigar. Easy-to-grow, delicious and very prolific.
110209 20 seeds £2.95

Cucumber 'Marketmore 70' ORGANIC
A friend recommended this tasty and heavy cropping variety of cucumber, and we could not believe how much just three plants produced. I'd never grow another standard-sized cucumber, nothing can compete.
110394 25 seeds £1.95 🏆

Florence Fennel 'Romanesco' HHA
A summer sowing variety, which forms the largest, most succulent bulbs, yet remains tasty, tender and sweet.
Sow: June-August.
Harvest: September-October.
H.90cm
110342 150 seeds £1.95
☀️ 🌿

Flower Sprouts (Kalette) HA
Bred from crossing Brussels sprouts and kale, these tasty flower sprouts are dense with minerals and antioxidants. They provide brilliant structure to the veg garden in the winter and unlike sprouts, these are cut-and-come again. In spring we eat the flower buds like purple-sprouting.

Sow: February-April.
Harvest: September-November.
H.75cm
110339 25 seeds £3.50
☀️ 🌿 c&c

Kale 'Curly Scarlet'
My favourite new semi-dwarf variety. It's an excellent tasty kale which is ideal for smaller veg plots, containers or the urban garden. H.90cm
110349 400 seeds £1.95

Kale 'Nero di Toscana' 🌿
A wonderful crop for winter. The flavour and texture improve once the frosts have started, as its sugars are released by the cold. This variety is very popular for autumn and winter Italian cooking. H.90cm-1.2m
110039 100 seeds £1.95

Cucumbers CLIMBING HHA

With these very tasty and easy varieties, you'll have sweet fruit with none of the palaver of removing male flowers. Sow: March-May. Harvest: July-October H.1.8m

☀️ 🌿 🌱 c&c



Kale HA

A great source of calcium and vitamins K and A.
Sow: March-May for large plants or until August for young leaves. Harvest: Almost all year

☀️ 🌿 🌱 c&c



Here I'm holding Kale 'Nero di Toscana' and 'Black Magic' which shows the size difference very clearly.

Kale 'Black Magic'
A more compact Cavolo Nero, suited to container, and even window box growing. H.60cm
110380 50 seeds £3.95 🏆



Classic Stir-fry Collection

I love a stir-fry, a quick flash in the pan meal, always tastiest with just picked, squeaky-fresh veg from the garden. With this collection, you can grow all you need to crop again and again. Harvest: July-October.

140111 5 packets of seed £13.50 ☀️



Kai lan (Chinese broccoli) HA
Not a beautiful picture but it shows that Chinese broccoli forms mini head after mini head, like purple-sprouting, but quick to grow and harvest in about 10 weeks, with very tender, non-stringy stems.
Sow: February-October.
Harvest: July-December. H.45cm
110440 150 seeds £1.75
☀️ 🌿 c&c



Kohlrabi 'Kolibri' F1 HA
I love kohlrabi, a much underestimated vegetable, ideal for growing at the lean veg times of the year. Fantastic cooked and wonderful raw in salad. Difficult to buy, but easy to grow.
Sow: March-August.
Harvest: July-October. H.45cm
110375 50 seeds £4.95
☀️ 🏆



Kale 'Redbor' F1 Hybrid
We should all grow this plant. It's delicious shallow-fried, makes the best Chinese seaweed and looks and tastes fantastic all through the year.
H.1.2m
110084 40 seeds £3.95 🏆



Kale 'Red Russian'
A kitchen garden container classic, more compact than many kales, which can be sown and grown all year. It grows super-quick and has soft textured leaves; we use the baby ones in salad.
H.90cm
110445 400 seeds £3.25



Kale 'Reflex'
A green curly kale more compact than others, so ideal as a pretty, low-maintenance, edible border to a veg garden bed. We interplant with frilly double tulips in spring.
H.90cm
110449 25 seeds £4.50

5 reasons to grow kale:

- so easy to grow
- it fills the veg patch with colourful foliage all through the winter
- delicious at the leanest homegrown time of year, in autumn and winter
- it's a super-healthy wonder food that we should all eat more of
- cut-and-come-again, unlike cabbage

Leeks HA

Sow: March-May. Harvest: October-March. H.45cm



Leek 'Autumn Giant 2' (Hannibal) ORGANIC
An early variety with the longest, super straight, white stems. This is ideal for growing closely packed as a mini leek, or left to reach full size.
110077
200 seeds £2.50 🏆



Leek 'Musselburgh'
A handsome leek and a tried and tested traditional variety that is reliable, easy to grow and has good disease resistance with an excellent strong flavour.
110282 450 seeds £1.95



Leek 'Northern Lights' F1
One of our greatest revelatory plant combinations, a purple leek growing with tulips and picked to arrange with them too. A hugely ornamental pairing.
110085 50 seeds £3.95

Peas HA

Sow: February-June. Harvest: June-August, as soon as pods being to swell. H.1.5m



Pea 'Alderman'
A 5ft tall pea with a long, drip-drip cropping pattern, ideal if you're only going for one sowing of one variety, to keep you in peas all summer long.
110265 50 seeds £2.25



Pea 'Blauwschokker'
Grow it in the ornamental veg garden with the matching Cardinal purple sweet pea, 'Blue Velvet' or 'Lord Nelson'.
110301 120 seeds £2.50



Pumpkin 'Black Futsu'
With the bloom of a Victoria plum, the pleats of Shakespearean breeches and the flavour of sweet potato, all treacly when roasted, this trailing pumpkin looks and tastes SUPERB. It's a brilliant winter storer too.
110366 10 seeds £2.95



Pumpkin 'Jill Be Little'
A lovely mini pumpkin. Roast it on a bed of rosemary. Slice off the top, scoop out the seeds and eat the flesh with a teaspoon, with butter or oil, like a boiled egg. Very prolific.
110377 10 seeds £4.50



Pumpkin 'Marina Di Chioggia'
The most handsome squash you can grow - like a living sculpture in the garden. It's delicious too, with rich, waxy flesh and exceptionally long storing. I absolutely love this in the garden and kitchen.
110359 10 seeds £2.25



Squash 'Cornell's Bush Delicata'
With a different shape to most pumpkins or squash, looking more like ornamental gourds as they grow, these have very sweet, orange flesh. They can be eaten as soon as mature (from August/September) and more will then form.
110425 10 seeds £3.95

new

Tasty and prolific

Pumpkins & Squash CLIMBING HHA

They make the garden look lush and abundant right into autumn.

Sow: March-June. Harvest: August-October. Trailing up to 1.8m



Onion 'Long Red Florence'
Quick, easy and super versatile - you can eat these shallot-sized for super sweetness, or leave some to grow on into whoppers.
Sow: January-April. Harvest: July-September. H.15cm
110351 350 seeds £1.95



Parsnip 'Tender and True' ORGANIC
Delicious old variety with long white roots, which grow well and mature at different times.
Sow: March-June. Harvest: September-March. H.45cm
110284
1000 seeds £1.95



Spring Onion 'North Holland Blood Red'
The best spring onion you can grow, with rich crimson outer skins and round, generous bulbs.
Sow: April-September. Harvest: May-October. H.30cm
080022
500 seeds £1.95
110397 **Seed Tape**
6m/500 seeds £3.50



Pea 'Hurst Green Shaft'
A renowned sweet-tasting, wrinkle-seeded, heavy-cropping variety that we always grow at Perch Hill. It's also good for freezing.
110056
120 seeds £1.95 🏆



Pea 'Nairobi'
Grown for an early crop inside and then outside, this delicious crunchy sugarsnap gave me more pleasure in lockdown than almost anything else in the garden. H.75cm
110363
200 seeds £2.95

A great favourite



Squash 'Crown Prince' F1
A silver-blue skinned pumpkin, which reminds me of sweet potatoes in taste. It also stores exceptionally well for up to a year.
110286
6 seeds £3.50 🏆



Squash 'Early Butternut' ORGANIC
One of the tastiest squash you can grow with rich, waxy orange flesh.
110067
20 seeds £2.75



Squash 'Red Kuri' ORGANIC
Waxy and sweet, tasting of chestnuts and it doesn't get too huge. It looks fantastic climbing up over frames. Trailing 1.2m
110082
20 seeds £3.25



Squash 'Tromboncino' CLIMBING/TRAILING
One of my must-have multi-purpose plants. It's good to eat small and ripens and stores once large. Mildew resistant.
110141 20 seeds £1.95



new

Summer Squash Collection

The tastiest little squash you'll ever find on your plate - packed with flavour and the prettiest of pale summer colours too.
140112 3 packets of seed £5.75



new

tomatoes

Ratatouille Veg Collection

Grow your own classic mix for the ultimate ratatouille – with courgettes, aubergine, peppers, and red and orange tomatoes.

Collection includes Aubergine 'MoneyMaker No. 2', Sweet Pepper 'Orange Bell', Pepper 'Marconi Rosso' (organic), Tomato 'Sungold', Tomato 'Stupicke Polni Rane' and Courgette 'Romanesco'.
140113 6 packets of seed £23.50



Essential Tomato Seed Collection

If I was to only grow three tomatoes, it would be these.

Collection includes tomatoes 'Gardener's Delight', 'Black Russian' and 'Sungold'.

110291 3 packets of seed £9.75



new

Rainbow Tomato Collection

Sweet cherry tomatoes in three sunset colours that each excelled in our trials.

Collection includes tomatoes 'Gardener's Delight', 'Goldkrone' and 'Sungold'.

140114 3 packets of seed £11.75

Tomatoes HHA

Most of the varieties of tomato I grow are cordons (except 'Micro Cherry', 'Tumbling Tom' and 'Chocolate Cherry', see website, which are good for pots or window boxes). These crop lightly, over three times as long as most bush and trailing types. If you cook or make salads with more than one variety of tomato, you'll get a richer taste – so grow a few plants of two or three different forms. Sow: February-March. Harvest: July-October. H.1.8m



new

Outdoor Tomato Collection

You don't need a glasshouse to grow tomatoes. This outdoor collection includes the best from our trials, giving you big juicy fruit, full of taste right up to the end of summer.

Collection includes tomatoes 'Stupicke Polni Rane', 'Cocktail Crush' F1, 'Sungold', 'Chocolate Cherry' and 'Black Russian'.

140115 5 packets of seed £22.75



Tomato 'Indigo Rose' and 'Black Russian' Collection

These not only look and taste good, they both have double doses of antioxidant plant pigments in them too.

140078 2 packets of seed £7.50



T. 'Costoluto Fiorentino'

A medium-sized, delicious, juicy Italian variety, which crops very reliably here. It's prolific and easier to grow than other larger fruited kinds.

110071

45 seeds £1.95 🏆



T. 'Noire de Crimée'

An extraordinary, crimson-skinned, Russian tomato with incredible flavour and a firm but juicy texture. Harvest according to feeling ripeness, not the skin colour.

110160

10 seeds £2.95



T. 'Gardener's Delight'

An easy, large cherry tomato you can grow inside or out. We do a second sowing of this for planting inside. All the fruit ripen at the same time, so you can roast them still on their vine.

110045 50 seeds £1.95



T. 'Indigo Rose'

Tomatoes are the richest source of the powerful antioxidant lycopene and in this blue-black tomato they contain good levels of anthocyanin too, so these are extra healthy.

110356 10 seeds £5.95



new

Spinach 'Giant Winter' HA

Tender, tasty, large green leaves – the hardiest spinach in our trials. A winter must-have. Sow: February-May and/or August-September. Harvest: April-November. H.30cm

110444 250 seeds £1.50

🌱 🏆 c&c



Spinach 'Medania' HA

A good, healthy variety, with dark green leaves that have a wonderful soft texture as well as excellent flavour.

Sow: February-May and/or August-September. Harvest: April-November. H.30cm

110293 200 seeds £1.95

🌱 🏆 🏆 c&c



T. 'Microcherry'

Mini, very tasty tomatoes which crop heavily for a couple of months. This is a bush-type variety ideal for a large container in a sunny spot.

H.60cm

110362 10 seeds £4.95



T. 'Red Grape Sugar Plum'

A deliciously sweet plum tomato of a cherry size. Pretty, with thin skins, and very prolific.

110289 10 seeds £2.75



Spinach 'Perpetual' HA

A prolific green leaf veg with a very similar taste and texture to spinach. Tasty, long-producing and very easy to grow.

Sow: February-September. Harvest: All year, 7-8 weeks from sowing. H.30cm

110157 200 seeds £1.95

🌱 🏆 🏆 c&c



Spinach 'Toscane' HA

A very disease-resistant variety of spinach which is slow to bolt, so THE variety for late spring and summer sowing.

Sow: February-May and/or August-September. Harvest: April-November. H.30cm

110354 150 seeds £1.95

🌱 🏆 c&c



T. 'Sungold'

Small, golden yellow-orange tomatoes with the sweetest flavour of any I know. Outstanding.

110047 20 seeds £5.95 🏆



T. 'Tumbling Tom Red'

When I lived in London, I had this in a window box. It produced so much, the pavement below became stained red! I just couldn't keep up with the bumper harvest.

H.30cm S.45cm (Trailing)

110326 20 seeds £3.95



new

New Zealand spinach HHA

Quick-growing and productive, we use the succulent leaves raw in salad and wilted quickly as a green. Sow: April-July and/or September-October indoors. Harvest: June-October (or all winter indoors). H.30cm

110427 75 seeds £1.75

🌱 🏆 c&c



new

Tree Spinach Chenopodium giganteum 'Magenta Spreen' HA

Best eaten as baby leaves raw, so pick the intense, almost glittery, brilliant pink seedling leaves for a dazzling mixed leaf salad.

Sow: March-June.

Harvest: May-September. H.1.8m

110447 200 seeds £2.25

🌱 🏆 c&c



salad leaves

Autumn and Winter Salad Leaf Mix HA

These truly hardy varieties will grow well outside your door, or in window boxes or containers, even if your winters get very cold. Collection includes Mizuna, Mustard 'Green Frills', Mustard 'Red Lace' and Salad Rocket 'Dentellata'. Sow: August-October and/or February-April. Harvest: late September-May, 6-8 weeks from sowing. H.15cm
080104 500 seeds £1.95

c&c



Super Hardy Winter Salad Leaf Mix HA

The best of the new generation salad leaf varieties, growing outside all winter to supply delicious and handsome salads. Collection includes (pictured above, left to right) Komatsuna, Salad Rocket 'Serrata', Green Mizuna 'Marshall' and Mustard 'Red Lace'. Sow: February-April and/or August-October. Harvest: 6-8 weeks from sowing. H.30cm
080112 300 seeds £1.95

c&c



Cos Lettuce Seed Tape (6m)

Lettuce seeds are small and fiddly to sow thinly, so we increasingly do our cos variety as a seed tape, making growing super-easy. You'll be harvesting sweet, crunchy cos leaves within weeks and can continue to harvest again and again.
110446 480 seeds £5.75



L. 'Freckles'

Stunning in a mixed leaf salad bowl, with sweet tasting leaves and a good crunchy texture, I love Cos 'Freckles' for sowing and growing almost all year.
158003 200 seeds £1.75



L. 'Merveille de Quatre Saisons'

ORGANIC
An old variety, with beautiful, crumpled bronze outer leaves around a good small heart. Excellent flavour. Ideal for serial sowing in early spring and autumn.
080009 500 seeds £1.95

L. 'Reine de Glace'

ORGANIC
A superb lettuce for eating raw or quickly cooked. I love this lettuce for its crunch and taste. Pour hot garlic oil or butter over its quartered hearts and eat straight away.
080013 250 seeds £1.95

Lettuce HA

Don't buy expensive salad leaves from supermarkets. You can grow your own easily; they will keep for longer and you don't need much space to do it. Use containers, raised beds, gutterpipes, or the veg garden or allotment. Success guaranteed!
Sow: February-September for most varieties. See website for details. Harvest: 6-8 weeks from sowing. H.30cm

c&c

4 reasons to grow salad leaves:

- very easy to grow
- tastes better than shop bought and keeps for longer
- you can grow salad leaves in gutterpipes for early picking
- with a succession of different varieties, you can have homegrown salad all year round - we harvest them even in snow



Lettuce Oak Leaf Collection ORGANIC

There's no easier to grow, longer producing lettuce than these. You can sow them any time of year. Keep picking and they keep producing. Collection includes 500 seeds each of Lettuces 'Salad Bowl' and 'Red Salad Bowl' packed in their own foils.
140030 2 packs of seed £2.95



Best Summer Lettuces Mix

These are our top favourite lettuce varieties for the summer, chosen because they performed best on taste and productivity.
080108
1000 seeds £3.50

Best Winter Lettuces Mix

The best salads often have lettuce as their base - to give you background flavours and plenty of crunch. These are our favourites for the winter.
080109
300 seeds £1.95



Asolo Lettuce Mix

When I was a child, I spent time staying in the beautiful medieval hill town, Asolo, in the foothills of the Dolomites in Italy. We used to buy mixed baby leaf salad in the market, and take it home and dress it with a little olive oil and lemon juice. Hugely recommended - I love it. Mix includes Lettuces 'Cerbiatta', 'Batavia Green', 'Little Gem', 'Batavia Red', 'Red Salad Bowl' and 'Tango'.
080103 500 seeds £2.50



L. 'Moonred'

Brilliant for growing all year, this crimson-coloured Cos is crunchy, reliably hardy here for us, even outside in winter, and has become one of our all-year lettuce stalwarts.
158004
200 seeds £3.50



L. 'Red Salad Bowl'

ORGANIC
Easy to grow, bronze-leaved, loose leaf lettuce variety which is bolt-resistant with good flavour.
158002
250 seeds £2.25



L. 'Salad Bowl'

ORGANIC
The best ever, number one cut-and-come-again lettuce, replacing the almost identical 'Green Oak Leaf'. For serial sowing almost all year.
080111
750 seeds £2.25



Stir-fry Autumn Winter Collection

We're forever trying out plant combinations here to pack as much in as we can for delicious things to eat which look good for longest. These two pairings stormed in our veg garden - the Mustard and Choy sum for winter into spring, the Komatsuna and Pea from summer into autumn. Collection includes Pea 'Nairobi', Komatsuna, Mustard 'Red Frills' and Choy sum. H.15cm

140116 4 packets of seed £8.50

c&c



Hardy Mustard Mix HA

Super-elegant and colourful mix of flavour-packed salad leaves which will jazz up any salad bowl. Eat these in a sandwich instead of mustard, or horseradish, toss them into a bowl to add punch to lettuce, or drizzle them with excellent olive oil and salt and eat them very simply. They're fresh, intense and utterly delicious.

Mix includes Mustards 'Red Dragon', 'Red Lace' and 'Green Fire'.

Sow: February-April and/or August-October. Harvest: All year round. H.15cm

140117 350 seeds £2.75

c&c

Growing your own salad from seed means tastier, fresher, cheaper and more readily available salad all through the year.



Autumn and Winter Pot Mix HA

Perfect for a pot, window box, or productive garden border, I love this mix of flavours, colours and leaf shapes. If you sow this salad mix in autumn or late winter, you can pick lightly from it every week until spring. It's a classic cut-and-come-again combination.

Mix includes Mizuna, Mustard 'Red Frills', Mustard 'Red Giant' and Pak Choi 'Golden Yellow'. Sow: February-April and/or August-October. Harvest: All year round. H.15cm

140118 500 seeds £1.95

c&c



Salad Leaf Summer Mix HA

In the summer, we all want to grow heat tolerant salad crops that won't bolt as soon as the weather turns hot and dry. This mix will give delicious, tangy bowls of baby leaves, which you can sow March-August and harvest for months at a stretch.

Mix includes Mustard 'Red Zest', Mustard 'Ruby Streaks', Tatsoi, Pak Choi 'Golden Yellow', Pak Choi 'Canton White' and Mizuna. Sow: March-August. Harvest: May-October, 6-8 weeks from sowing. H.15cm

080105 500 seeds £1.95

c&c



Greek Cress HA

A prettier version of cress so often used in an egg-and-cress sandwich. We use Greek cress through our bowls of mixed salad leaves all year, but particularly in the winter, when this is pretty hardy and reliable.

Sow and harvest all year round. H.15cm

158007 200 seeds £1.75

c&c



American Land Cress HA

With the taste of watercress, but super easy, super hardy (see the frost on these leaves) prolific and long-cropping.

Sow: February-September. Harvest: 7-8 weeks from sowing. H.15cm

080065 1000 seeds £2.25

c&c



Chicory 'Variegato di Castelfranco' HA

I am mad keen on chicory. This one is the hardiest and easiest to grow. Leave this to heart up, or eat it as a cut-and-come-again leaf.

Sow: May-July. Harvest: October-April. H.30cm

110087 400 seeds £1.95

c&c



Mizuna 'Red Knight' F1 HA

This does well in the late spring and summer, when it's slower to bolt, and is lovely in the winter, when the purple leaves are at their richest.

Sow: February-April and/or August-October. Harvest: 3-4 weeks from sowing for baby leaf. H.20cm

080086 400 seeds £2.95

c&c



Mustard Wasabi HA

A quick and easy cut-and-come-again salad leaf which tastes of wasabi. It crops for at least six months from one sowing.

Sow: March-September. Harvest: 3-4 weeks from sowing for baby leaf. H.15cm

158001 250 seeds £2.95

c&c



Sprouting Nasturtium 'Blue Pepe' TRAILING HA

These have a delicious peppery flavour and provide another lovely looking and tasty leaf for our mixed salad bowls.

Sow and Harvest: All year. H.30cm, Trailing 75cm

110391 20 seeds £2.95

c&c



Radish 'Caro' HA

Handsome, purple-pink skinned, white-fleshed radish with crunchy texture.

Sow: February-September. Harvest: 4-6 weeks from sowing, March-October. H.15cm

110332 400 seeds £1.95



Rocket 'Buzz' Seed Tape HA

A salad rocket with a mild, peppery taste and highly cut leaves. Unroll the seed tape and harvest regularly from 4-6 weeks.

Sow: March-June and September-October. Harvest: 30 days from sowing. H.15cm

110395 6m/480 seeds £3.75

c&c



Salad Rocket 'Serrata' HA

A new salad rocket that has a thicker leaf, AND a milder flavour than older types which get unpalatably peppery with age.

Sow: March-June and September-October. Harvest: 30 days from sowing. H.15cm

080114 500 seeds £1.95

c&c



Samphire (Salicornia europaea) P

I am hugely excited about this - Samphire you can grow in a pot. Just germinate and water with a little salt solution. Will self-sow. Sow: March-May. Harvest: June-August. H.15cm

110353 500 seeds £2.95

c&c



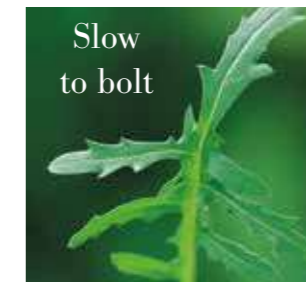
Sorrel (Rumex acetosa) P

A spinach-like leaf with a citrusy flavour - a fantastic addition to sauces and soups.

Sow: March-May and/or August-September. Harvest: February-November. H.30cm

080029 500 seeds £1.95

c&c



Wild Rocket ORGANIC HA/P

Slower growing than salad rocket, with thinner leaves, which it produces for twice as long.

Sow: March-August. Harvest: all year. H.15cm

080020 500 seeds £1.95

c&c



Winter Purslane HA

One of the hardiest edible plants you can grow, with succulent leaves and pretty edible flowers. A must-have for your winter and spring salad bowls. A British native which thrives in our climate.

158006 500 seeds £2.50

c&c



Summer Savory ORGANIC HA
An easy-to-grow annual herb with the taste of thyme but much more prolific. Use as a companion plant against blackfly on broad beans.
Sow: March-July. Harvest: May-November. H.45cm
100026 250 seeds £1.95
☀️ 🌱 🌿 c&c



Tagetes minuta HHA
Not a looker, but its roots kill perennial weeds. It's cleared a bed of ground elder at Perch Hill. Also the fragrant leaves are good in tisanes and added to salads.
Sow: March-May. H.1.2m
030119 500 seeds £1.95
☀️ 🌱 🌿 c&c



Anise hyssop (Agastache foeniculum) P
Perennial and easy to grow from seed, this is one of our must-have, multi-purpose plants, with delicious leaves to scatter raw in salads, or use in boiling water for an aniseed-tasting tea. It also has lovely blue-purple edible flowers and we cut stems for aromatic hand-tied bunches to mix with roses and scented leaved pelargoniums.
Sow: January-March and/or October-December. Harvest: May-September. 🌱 July-September. H.90cm
157048 200 seeds £1.50
☀️ 🌱 🌿 🌿 c&c



Basil Greek Bush
Small-leaved, strong-flavoured basil which is easy to train to look brilliant in containers.
080061 50 seeds £2.95



Basil 'Queen of Sheba'
This is the most ornamental basil with ebony stems, beautiful rich-coloured buds and showy flowers.
100053 150 seeds £2.95



Basil 'Red Boza'
This excelled in our basil trial and won hands down amongst the purple basil-leaved varieties.
100047 300 seeds £3.95

Basil 'Sweet Genovese' ORGANIC
The best aromatic basil, with a sweet taste and soft, tender texture.
100010 500 seeds £1.95



Chive Garlic P
Cut-and-come-again chives with a taste of garlic. Decorative white flowers, which our pollinators love.
Sow: February-August. Harvest: May-November. H.45cm
100002 100 seeds £1.95
☀️ 🌱 🌿 🌿 c&c

Companion plants

When you talk to vegetable growers, most have stories of successful partnerships between plants. Here are the ones which work well for us.



Tagetes patula 'Linnaeus Burning Embers' HHA
Fantastic plant. Edible flower, brilliant in a vase and invaluable companion plant. We grow this everywhere at Perch Hill.
Sow: March-May. 🌱 June-October, 10-12 weeks from sowing. H.45cm
030121 50 seeds £2.50
☀️ 🌱 🌿 🌿 c&c



Tagetes patula x erecta 'Konstance' HHA
Tall and elegant with an endless production of cut flowers (also edible), this is excellent for underplanting tomatoes or cucumbers.
Sow: March-May. 🌱 June-October. H.45cm
152039 75 seeds £3.50
☀️ 🌱 🌿 🌿 c&c



Tisaniere
Our bestselling glass tisaniere is perfect for making your own blends of herbal teas.
L.18cm, W.15cm, H.20cm
Vol.480ml
361483 £34.95



Herb Scissors
I love these ingenious 5-blade scissors for snipping up my herbs - efficient and quick, with a blade guard and comb for cleaning between the blades.
L.19cm
361510 £9.95



Coriander 'Leisure' ORGANIC HA
Slower to bolt than all other forms. A herb with many health benefits, we eat the flowers and green seeds in salads.
Sow: February-April and August-September. Harvest: 4 weeks from sowing. H.60cm
100004 100 seeds £1.95
☀️ 🌱 c&c



Dill 'Tetra' HA
A brilliant so-called 'Tetraploid' dill variety, loved for its dark green leaves and slowness to bolt, so ideal for the herb and veg garden.
Sow: March-June. Harvest: July-October. H.90cm
100041 750 seeds £1.95
☀️ 🌱 🌿 🌿 c&c



Lemongrass P
The classic herb for Oriental cooking and surprisingly easy to grow.
Sow: March-May. Harvest: June-October. H.90cm
100023 200 seeds £2.50
☀️ 🌱



Parsley 'Gigante di Napoli' ORGANIC HA
This has larger leaves and a better flavour than others parsleys. Superb raw in salads.
Sow: April-May and/or August-September. Harvest: all year. H.30cm
100013 300 seeds £1.95
☀️ 🌱 🌿 🌿 c&c



Sweet Cicely P
One of my favourite perennial herbs. We use the baby leaves in salads, flowers to decorate puddings, and use the seedpods for a fresh aniseed-tasting tea.
Sow: All year round. Harvest: February-June. H.90cm
070089 10 seeds £3.95
☀️ 🌱

Basil HHA
Sow: March-July. Harvest: June-October. H.45cm
☀️ 🌱 🌿 🌿 c&c

SPECIAL OFFER
Basil Collection 'Red Boza' & 'Sweet Genovese'
140079 2 packets of seed £5.25

Fresh herbs turn run-of-the-mill cooks into stellar chefs and boring meals into delicious plates of food. However small your garden or your pots and window boxes, you have to grow a few.

For Sorrel
see page 73

sowing & growing

All our favourite kit and kaboodle we use at Perch Hill.



Windowsill Propagator Kit

Placed on a bright windowsill, your seedlings will get a strong start with this kit. L.69cm, W.16cm, H.18cm
 420207 £21.95



Sweet Pea Tubes

Grow beans or sweet peas in these biodegradable tubes. There is no root disturbance with this method.
 420151 Pack of 20 £6.95
 420207 Pack of 40 £12.95



Biochar Seed Compost

ORGANIC
 Our compost of choice so we don't have to use peat. It produced good germination and potting on results.
 430142 10L £9.95
 (Price per litre £0.99)



Biochar All Purpose Compost

100% peat and chemical free. This all-purpose compost has complex structure and porosity helping to retain moisture, aid drainage and improve soil structure
 420440 40L £17.95
 (Price per litre £0.45)



SLUG CONTROL

Wool Pellets ORGANIC

A natural and harmless barrier to slugs and snails. Scatter around the base of your plant and water in.
 430038 3.5L bag £11.95
 (price per litre £3.41)
 10L bag £26.95
 (price per litre £2.70)



Rootgrow

A naturally occurring mycorrhizal fungi which works with the plant as it grows, extending its root system and acting like a net to catch nutrients and prevent leaching.
 430063 360g £11.50
 (Price per 100g £3.19)



Organic Tomato Fertiliser with Seaweed

Formulated with a higher level of potash for bumper yields of delicious, healthy tomatoes.

430104 1L Bottle £10.95



Liquid Seaweed ORGANIC

An invaluable fertiliser for hungry beans, sweet peas and squash. Regular use will help plants withstand environmental stress, pest and disease attack.

420172 500ml £6.50
 (Price per 100ml £1.30)



Sweet Pea Fertiliser

Specially formulated to encourage beautiful, long-lasting blooms. Suitable for all flowering plants - use in beds, borders and containers.

420350 2.5kg £17.50
 (Price per kg £7.00)



Biochar Biology Blend

An intense boost of minerals and natural biology (fungi and bacteria) for your plants. Improves soil structure, aeration, water-holding capacity and nutrient retention.

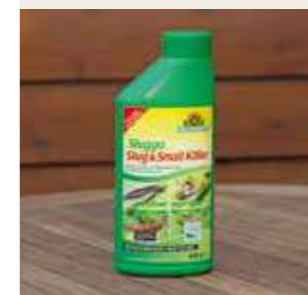
420442 4L £19.95
 (Price per litre £4.99)



Biochar Fertiliser ORGANIC

A pelleted all-natural fertiliser, packed with nitrogen, phosphate and potash, keeps nutrients in the top level of soil, so they are readily available to the plant. Use on flowers, veg, pots and container plants.

420437 2kg £16.95
 (Price per kg £8.48)



Sluggo ORGANIC

Use these pellets around any plants susceptible to slugs and snails. Rain-resistant and safe to use around pets and wildlife.

430061 800g £12.95
 (Price per 100g £1.62)



Seaweed Slug Repellent (Soil Enhancer)

100% natural, hand-gathered and dried seaweed from the shores of Guernsey. Excellent soil conditioning which helps keep slugs at bay.

430095 1.2kg bag £16.95
 (Price per kg £14.13)



Flexi-Tie Set

Allow plants to grow and move without being snagged or chafed. Set includes 1 each of:
 Large L.35m, 3.5mm thick
 Small L.60m, 2.5mm thick
 271149 £19.50



Paper Twist Ties

500 (approx) paper-covered wire lengths. L.15cm each
 420185 £5.95



Black Plant Labels

Used more than any other labels in my garden. Includes white pen. Simply clean with white spirit for re-use. L.38cm
 420118 Set of 10 £16.95
 Set of 20 £28.95



Coloured Markers

Excellent value, wooden markers to create a jamboree of colour. L.15cm
 420271 Set of 100 £7.50



Biochar Soil Improver

ORGANIC
 This delivers nutrients directly into the soil, improves its texture and speeds up plant growth.

430162 4L £15.95
 (Price per litre £3.99)



Orgro Concentrated Manure

A natural, granular fertiliser, made from concentrated manure, rich in humus. Add 3-6 handfuls per square metre and rake in lightly.

430046 15kg £18.50
 (Price per kg £1.23)



Nemaslug

A brilliant biological solution to your slug problem. See website for more details.
 270078 Small garden one treatment (treats 40m²) £17.95
 270079 Large garden one treatment (treats 100m²) £34.95



Flexible Copper Tape

Apply this around the tops of your pots and raised beds and the slugs won't cross it. L.4m, W.3.8cm roll.
 430036 £9.95



Mid Handled Tools

Strong and comfortable to use. Stainless steel tools with solid ash handles and leather hanging strap.

- A. Onion Hoe
 - B. Weed Fork
 - C. Transplant Trowel
 - D. Cultivator
 - E. Trowel
 - F. Dandelion Weeder
- 440083
£17.95 each



Sarah Raven Watering Can
exclusive

This is the best, longest lasting watering can. Heavy gauge steel, with a galvanised coating to resist rusting, and push-on rose. Choose from: Turquoise or Teal. 5L capacity

430108 £59.95



Heart-shaped Trowel

This heart-shaped trowel from Sneeboer is fantastic with its sharp point. Perfect for digging out stones, planting bulbs and drawing out drills.

L.26cm
440027 £42.95

Wooden Obelisk

Our softwood obelisk is long-lasting and has a soft sage green paint finish. It's good for compact climbers in beds or borders.

W.38cm, H.1.53m
410124
£169.95



Bean Frame

An elegant and practical addition to your kitchen garden with robust rust-coloured steel arches to support the heaviest crops. Supplied with biodegradable jute netting.

W.2m, H.2.1m, D.35cm
410149
£169.95



plant
SUPPORTS



Gardener's Bag

Made from canvas with a strong padded handle. Exterior pockets and a generously sized central compartment. Contents not included.

W.26cm, H.28cm
440065 £17.95



new

Capillary Matting

For placing underneath your Jiffy-7s®, as it absorbs water, releasing it slowly, so you can water less.

L.1m, W.60cm
279061 £5.95



Bottle Top Waterers Set

Use old plastic bottles for watering with these tops. The gentle sprinkling is ideal for young seedlings.

Set of 4 spouts.
L.5cm
420202 £4.95



Jute Netting

Support your sweet peas, cobaea, beans and peas with this natural netting.

420189
1.8m² £5.95
1.8m² Set of 2 £10.95
2m x 5m £14.95



King Garden Obelisk

A feature in its own right as well as providing a versatile support for any climber. Solid steel with rust effect finish.

W.50cm, H.1.6m
410161 £169.95



Cathedral Obelisk

An extra tall traditionally shaped wirework support, ideal for runner beans, sweet peas and climbing roses. Solid steel with rust effect finish.

W.85cm, H.2m
410148 £299.95



Rustic Maypole Support

Ideal for all climbing annuals and perennial flowers such as sweet peas, clematis and runner beans. Solid steel with rust effect finish.

H.1.8m
410171 £39.95



Florist's Scissors

These are the best ever florist's scissors for cutting flowers. We use these everyday at Perch Hill.

L.17.5cm
279079 £11.95



Sarah Raven Secateurs
exclusive

Excellent quality with a good shock-absorbing cushion for comfort.

L.20cm
440041 £21.95



Sarah Raven Ergo Snips
exclusive

Brilliant snips – easy to use and really sharp. Use them for deadheading, pruning and picking.

L.17cm
440091 £16.95



Sarah Raven Mini Secateurs Set
exclusive

These cut through wire and woody stems easily, yet are small enough to pop into your pocket. Set of 2 (one of each colour).

L.15cm
440042 £22.95



Deadhead Snippers

Great for deadheading or snipping herbs and ideal for sweet peas. Easy and light to use. Choose from Pink or Blue.

L.10cm
440054 £5.50



We make our brassica frames out of woven silver birch.

Bird & Butterfly Protection Netting

Lay this strong yet lightweight netting directly over plants and crops or use to cover frames and cages. Mesh size 7mm²

430127 5m x 2m £9.95
4m x 3m £12.95
10m x 2m £19.95



Steel Stake Set

The steel is left uncoated, and will quickly develop a lovely rusted finish, so it looks naturally aged. Set of 4.

140059
Medium H.1.2m £42.95
Large H.1.5m £56.95



Willow Flower Stakes Set

Stake individual plants with these, or use them with netting to create a grid support system.

Set of 20, H.90cm
410119 £11.95



Pea & Bean Maypole

We use ours for borlotti beans and sweet peas. Quick and easy to assemble, it's robust and easy to store away.

H.1.9m
410125 £26.95

Coir Jiffy Pellets

Reusable trays filled with coir pellets. Soak the pellets, sow your seeds and once germinated, remove the netting and plant out.

420203

Single tray for 30mm pellets
(with 60 pellets) £10.95

Set of 2 trays

(with 120 pellets) £17.95

430048 30mm pellet refills

60 pellets £8.95

120 pellets £16.95

271120

Single tray for 50mm pellets
(with 45 pellets) £10.95

Set of 2 trays

(with 90 pellets) £17.95

271128 50mm pellet refills

90 pellets £18.95

135 pellets £26.95



Exclusive seed tin collections

The best, most reliable and easy-to-grow varieties, with full growing instructions – they make a lovely present.

For more Seed Gifts, see our website



Flowers for a White Garden Seed Tin Collection

4 packets of seed.
131009 £12.95



Bees and Butterflies Seed Tin Collection

4 packets of seed.
131041 £11.95



Really Good Cut Flowers Seed Tin Collection

13 packets of seed.
131011 £33.50



Rootainers

32 reusable cells, a frame and propagator lid. The Low Maintenance sets contains an extra plastic try with capillary matting so you can water less.

279031 Original Set £9.95

279030 Low Maintenance Set £12.95



Favourite Gloves

Breathable so your hands don't sweat, and machine washable.

These are the gloves I wear most. Colours vary. Choose from: Small, Medium or Large.

270069 £9.95



Ladies Cosy Gardening Gloves

Incredibly comfortable and are ideal for general gardening tasks during cooler months. Choose from sizes Small or Medium.

279120 £7.95



Ladies Leather Palm Gardening Gloves

These have a soft goatskin palm for the ultimate comfort, flexibility and protection. Choose from sizes Small or Medium.

279119 £15.95



discover more of
our range at
sarahraven.com

Return address:
Sarah Raven
1 Woodstock Court
Blenheim Road
Marborough
Wiltshire SN8 4AN