



AMERICAN Peony Society Bulletin

September 1990 — No. 275

TABLE OF CONTENTS

The American Hybrid Peony	1
Officers and Board of Directors	2
Table of Contents	3
From Your President	4
Convention of the American Peony Society Division 1 through Division IV	
Court of Honor—Exhibits and Exhibitors	5-14
1990 Kingwood Center	15
Division VII — Artistic Arrangements, Kingwood Center	15
Artistic Arrangements, Photographs [continued]	16-17
Gold Medal Peony — <i>Sea Shell, W. G. Sindt</i>	17
Minneapolis-St. Paul Peony Exhibition	18
China — Tree Peonies in the Wild, <i>Dr. Gian Lupo Osti</i>	19
The Lure of the Species — <i>Lawrence C. Ellery</i>	19-20
Starting a Peony Garden — <i>Harris Olson</i>	21-23
American Peony Society seed — <i>Chris Laning</i>	23
Tree Peonies Boerner Botanical Gardens — <i>Joseph Glocka</i>	24-25
Book Review of Tree and Herbaceous Peonies in Modern Japan — <i>Sr. Peter Smithers</i>	26-27
Culture of the Peony — <i>A. M. Brand</i> , submitted by Myron D. Bigger ...	28-30
Registration	30
Russell Emerick Peony — <i>William H. Krekler</i>	31
What Results May be Expected From Your Peonies	31
A Historic Peony Collection at Nichols Arboretum	32-33
Annual Meeting of the American Peony Society	34
Board of Directors Meeting, June 10, 1990	35
Secretary's Report 1989-1990	36
Financial Statement, June 1, 1989 - June 1, 1990	37
Advertising	39-88

FROM YOUR PRESIDENT

Dear Friends:

It was another wonderful June! I am certainly not praising the weather (which continues to be unusual) but rather the opportunity to be part of two peony shows again this year.

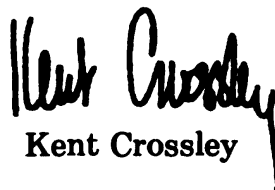
The Kingwood Center in Mansfield, Ohio has become a pleasant familiar place to return every third year. The staff goes out of their way to be of help to our exhibitors and visitors. Bill Collins, the Kingwood educational director, seemed to always be on hand to help us with our meeting and show.

The seminar on Saturday afternoon was an interesting question and answer session. We had two visitors from Holland and it was fascinating to compare methods of peony culture. Our Dutch visitors were clearly disenchanted with herbicides (because of cumulative adverse effects on their plantings) and the use of fungicide (both talked about apparent benlate-resistant fungus diseases).

The seminar for 1991 will be about the showing and judging of peonies. I am sure that this will be an excellent program, and I am very excited about it.

The following weekend, a number of us regathered in Minneapolis for our Minnesota Peony Society Show. This show becomes larger every year. Our group is especially thankful to Chuck Klehm for his tremendous support of this show each year.

For those of you who wonder why *my* letter is still here, a word of explanation is in order. Bob Schmidt, our president elect, was ill at the time of our annual meeting. He asked that I serve until June of 1991; it is an honor for me to do so.


Kent Crossley

**CONVENTION OF
THE AMERICAN PEONY SOCIETY
THE 87th ANNUAL MEETING AND THE 85th
NATIONAL EXHIBITION**

KINGWOOD CENTER—MANSFIELD, OHIO

June 8, 9 and 10th, 1990

COURT OF HONOR

Grand Champion — ETCHED SALMON — Carl Klehm, S. Barrington, IL
Double white — BOWL OF CREAM — Carl Klehm
Double blush — no award
Double light pink — WESTHILL — Joseph Glocka
Double dark pink — EDULUS SUPREME — Carl Klehm
Double red — PAUL M. WILD — Joseph Glocka
Bomb, any color — PINK LEMONADE — Carl Klehm
Semi-double, any color — MISS AMERICA — Carl Klehm
Japanese, any color — EVELYN TIBBITS — Carl Klehm
Single, any color — ALA MODE — Carl Klehm
Double hybrid, any color — ETCHED SALMON — Carl Klehm
Semi-double hybrid — JOHN HARVARD — Floyd Kimball
Single hybrid — FRIENDSHIP — Joe Glocka
Japanese, any color — no award
Lutea tree peony — NIKE — Carl Klehm
European tree peony — SOUVENIER MAXINE CORNU — Carl Klehm
Japanese tree peony — SHINTENCHE — Carl Klehm
Best Itoh hybrid — GARDEN TREASURE — Carl Klehm
Special dark red lutea tree peony — BLACK PIRATE — John Simkins

* * * * *

Best collection of 25 peonies — Joseph Glocka
Best collection fifteen herbaceous peonies — Joseph Glocka
Best collection ten herbaceous hybrids — Carl Klehm
Best collection ten tree peonies — Carl Klehm
Best collection of ten peonies by an amateur — Robert Wise
Best collection of five peonies by a novice — Pat Glocka
**Exhibitor from the greatest distance — Floyd Kimball, Stillwater, Min-
nesota — 730 miles.**

Artistic Awards—Grand Champion—Leila Bradfield, Kalamazoo, Michigan
Entry — “Travel Time — A Trip to Japan”
Reserve Champion — Johanna Bodiford, Mansfield, Ohio
Entry — “A Stitch in Time Saves Nine”

DIVISION I. Open to All Exhibitors

Class 101 — Twenty-five varieties any color or type. One bloom in separate container.

1st WON BY JOSEPH GLOCKA, WEST ALLIS, WISCONSIN

Friendship, Harrieta Sisson, Festiva Maxima, Kansas, Hari-Ai-Nin, Laura Magnuson Westerner, Fair Elaine, Mons Jules Elie, Mrs. Franklin D. Roosevelt, Sarah Napier, Sea Shell, Firebelle, Miss America, Red Charm, Chief Logan, Toro-no-maki, Rose Glory, L'Etincelante, Golden Glow, Lovely Rose, Cytherea, Ave Maria, Flame, Westhill.

2nd WON BY CARL KLEHM, SO. BARRINGTON, ILLINOIS

Pillow Talk, Edulis Supreme, Red Charm, Miss America, Angel Cheeks, Etched Salmon, Bowl of Cream, Cora Stubbs, Raspberry Charm, Largo, Coral and Gold, Lora Dexheimer, Scarlet O Hara, Friendship, Ann Berry Cousins, Nice Gal, Sweet 16, Gratis, Ephigenia, Kamada Fugi, Harvest, Savage Splendor, Souvenir de Maxine Cornu, Bridal Shower, Dawn Pink.

Class 102 — Fifteen varieties herbaceous only any type or color. One bloom in separate container.

1st WON BY JOSEPH GLOCKA, WEST ALLIS, WISCONSIN

Marietta Sisson, Hari-ai-nin, Seashell, Westhill, Kansas, Largo, Sylvia Saunders, Rose Glory, Onondago, Miss America, L'Etincelante, Mrs. Franklin D. Roosevelt, Westhill, President Lincoln, Festiva Maxima.

2nd WON BY CARL KLEHM, SO. BARRINGTON, ILLINOIS

Pillow Talk, Nice Gal, Edulis Supreme, Bev, Highlight, Festiva Maxima, Miss America, Largo, Schafe, Raspberry Sundae, Toro-no-maki, Gratis, Krinkled White, Charlie's White, White Cap.

Class 103 — Ten varieties, herbaceous hybrids only, any type or color. One bloom each in separate container.

1st WON BY CARL KLEHM, SO. BARRINGTON, ILLINOIS

Raspberry Charm, Red Charm, Coral Charm, Cytherea, Horizon, Coral 'n Gold, Postilion, Friendship, Prairie Moon, Etched Salmon.

2nd WON BY JOSEPH GLOCKA, WEST ALLIS, WISCONSIN

Cytherea, Friendship, Firebelle, Heritage, Black Monarch, Chocolate Soldier, Ann Zahller, Red Charm, Your Majesty, Illini Belle.

Class 104 — Ten varieties tree peonies only any type or color. One bloom each in separate container.

1st WON BY CARL KLEHM, SO. BARRINGTON, ILLINOIS

Age of Gold, Coronal, Savage Splendor, Kamada Fuji, Happy Day, Leda Banquet, Souvenir, Maxine de Cornu, Hephestos, Vesuvian.

2nd WON BY JOHN SIMKINS, OAKVILLE, ONTARIO, CANADA

Roman Gold, Kamada nishi, Renkaku, Vesuvian, Coronal, Angelette, Hap-pydays. (3 not readable)

Class 105 — Five varieties, Japanese type lactiflora only, any color. One bloom in separate container.

1st WON BY CARL KLEHM, SO. BARRINGTON, ILLINOIS

Evelyn Tibbits, Do Tell, Cora Stubbs, Largo, Pay Payton.

2nd WON BY JOSEPH GLOCKA, WEST ALLIS, WISCONSIN

White Cap, Toro-no-maki, Largo, Hari Ai Nin., Fair Elaine.

Class 106 — Five varieties, single type lactiflora only, any color. One bloom each in separate container.

1st WON BY CARL KLEHM, SO. BARRINGTON, ILLINOIS

Ivory Jewel, Dawn Pink, President Lincoln, Ala mode, Pink Princess.

2nd WON BY JOSEPH GLOCKA, WEST ALLIS, WISCONSIN

Krinkled White, Red Emperor, Sea Shell, Arcturus, President Lincoln.

THREE BLOOMS, ONE VARIETY, LACTIFLORA, IN ONE CONTAINER

- | | |
|-----------------------------------|---|
| Class 110 | 1. Carl Klehm — Festiva Maxima |
| Double white | 2. Joe Glocka — Festiva Maxima |
| | 3. Carl Klehm — Martha Reed |
| Class 111 | None |
| Class 112 | 1. Carl klehm — Mrs. Euclid Snow |
| Double light pink | 2. Joe Glocka — Mrs. Franklin D. Roosevelt |
| | 3. Carl Klehm — Big Mama Bear |
| Class 113 | 1. Carl Klehm — Cincinnati |
| Double dark pink | 2. Carl Klehm — First Lady |
| | 3. Carl Klehm — Edulus Supreme |
| | H.M. Joe Glocka — Marietta Sisson |
| Class 114 | 1. Carl Klehm — Highlight |
| Double red | 2. Carl Klehm — Bonanza |
| | 3. Joe Glocka — Red Goddess |
| | H.M. Carl Klehm — Lora Dexheimer |
| Class 115 | 1. Carl Klehm — Miss America |
| Semi-double blush or white | 1. Carl Klehm — Miss America |
| | 2. Chris Laning — Minnie Shaylor |
| | 3. Joe Glocka — Miss America |
| Class 116 | 1. Carl Klehm — Nice Gal |
| Semi-double pink | |
| Class 117 | None |
| Semi-double red | |
| Class 118 | 1. Carl Klehm — Sweet 16 |
| Bomb, any color | 2. Robert Wise — Detroit |
| | 3. Carl Klehm — Lancaster Imp |
| | H.M. Carl Klehm — Mr. Ed |
| Class 119 | 1. Carl Klehm — Evelyn Tibbits |
| Japanese white or blush | 2. Carl Klehm — Carrara |
| | 3. Carl Klehm — Cheddar Gold |

- Class 120**
Japanese pink
1. Carl Klehm — Cora Stubbs
 2. Carl Klehm — Do Tell
 3. Carl Klehm — Cora Stubbs
- Class 121**
Japanese red
1. Carl Klehm — West Elkton
 2. Carl Klehm — White Cap
 3. Carl Klehm — Karen Gray
- Class 122**
Single white or
blush
1. Carl Klehm — Ala Mode
 2. Carl Klehm — Ivory Jewell
 3. Carl Klehm — Krinkled White
- Class 123**
Single pink
1. Carl Klehm — Dawn Pink
- Class 124**
Single red
1. Carl Klehm — Gratis
 2. Carl Klehm — President Lincoln

ONE BLOOM LACTIFLORA ONLY

- Class 130**
Double white
1. Joe Glocka — Ava Maria
 2. Carl Klehm — Festiva Maxima
 3. Joe Glocka — Festiva Maxima
- Class 131**
Double blush
1. Carl Klehm — Gardenia
- Class 132**
Double light pink
1. Carl Klehm — Pillow Talk
 2. Carl Klehm — Pillow Talk
 3. Carl Klehm — Bev
- H.M. Carl Klehm — Mrs. Euclid Snow
- Class 133**
Double dark pink
1. Carl Klehm — Cincinnati
 2. Carl Klehm — Edulus Supreme
 3. Carl Klehm — First Lady
- H.M. Joe Glocka — Rose Glory
- Class 134**
Double red
1. Carl Klehm — Highlight
 2. Carl Klehm — Lora Dexheimer
 3. Joe Glocka — Onondaga
- H.M. Carl Klehm — Highlight
- Class 135**
Semi-double white
blush
1. Carl Klehm — Miss America
 2. Carl Klehm — Miss America
 3. Carl Klehm — Lois Kelsey
- H.M. Chris Laning — Minnie Shaylor
- Class 136**
Semi-double pink
1. Carl Klehm — Nice Gal
 2. Carl Klehm — Nice Gal
 3. Carl Klehm — Liebchen
- Class 137**
Semi-double red
1. Carl Klehm — Viking Chief
- Class 138**
Bomb white or
blush
1. Carl Klehm — Lancaster Imp.
 2. Carl Klehm — Bridal Showers
 3. Carl Klehm — Mr. Ed
- Class 139**
Bomb pink
1. Carl Klehm — Sweet 16
 2. Carl Klehm — Pink Lemonade
 3. Carl Klehm — Angel Cheeks

- | | |
|--|---|
| Class 140
Bomb red | 1. Carl Klehm — Cora Stubbs
2. Carl Klehm — Largo
3. Carl Klehm — Cora Stubbs |
| Class 141
Japanese white or
blush | 1. Carl Klehm — Evelyn Tibbits
2. Carl Klehm — Lotus Queen
3. Carl Klehm — Carrara |
| Class 142
Japanese pink | 1. Carl Klehm — Cora Stubbs
2. Carl Klehm — Largo
3. Carl Klehm — Cora Stubbs |
| Class 143
Japanese red | 1. Carl Klehm — Port Royal
2. Carl Klehm — Ray Payton
3. Carl Klehm — Karen Gray |
| Class 144
Single white or
blush | 1. Carl Klehm — Ivory Jewell
2. Carl Klehm — Ala Mode
3. Carl Klehm — Krinkled White |
| Class 145
Single pink | 1. Carl Klehm — Pink Princess
2. Carl Klehm — Dawn Pink |
| Class 146
Single red | 1. Joseph Glocka — President Lincoln
2. Carl Klehm — President Lincoln |

THREE BLOOMS, ONE VARIETY, HERBACEOUS HYBRIDS OR SPECIES IN ONE CONTAINER

- | | |
|--|---|
| Class 150
Double or semi-
double white, blush
or yellow | 1. Carl Klehm — White Charm |
| Class 151
Double or semi-
double coral | 1. Carl Klehm — Etched Salmon
2. Carl Klehm — not readable
3. Carl Klehm — Coral Charm |
| Class 152
Double or semi-
double pink | 1. Carl Klehm — Ludovica
2. Carl Klehm — Cytherea
3. Carl Klehm — Paula Fay |
| Class 152A
Double or semi-
double raspberry | 1. Carl Klehm — Raspberry Charm
2. Carl Klehm — Raspberry Fluff |
| Class 153
Double or semi-
double red | 1. Floyd Kimball — John Harvard
2. Joe Glocka — Heritage
3. Carl Klehm — Buckeye Belle
H.M. Carl Klehm — Red Grace |
| Class 154
Japanese any color | 1. Carl Klehm — Show Girl
2.
3. Carl Klehm — Dainty Lass
4. Carl Klehm — Walter Mains |
| Class 155
Single Yellow | 1. Carl Klehm — Prairie Moon
2. W.G. Sindt — Claire de Lune
3. Carl Klehm — Prairie Moon |

Class 156 Single white or blush	No entries
Class 157 Single coral	1. Carl Klehm — Coral n Gold 2. Carl Klehm — Salmon Surprise
Class 158 Single pink	1. Carl Klehm — Friendship
Class 159 Single red	1. Carl Klehm — Burma Ruby 2. Carl Klehm — Scarlet O' Hara 3. Carl Klehm — Flame
Class 159A Itoh hybrid	1. Chris Laning — Yellow Heaven

ONE BLOOM HERBACEOUS HYBRID OR SPECIES

Class 160 Double or semi- double yellow	1. Carl Klehm — Prairie Moon 2. Carl Klehm — Sunny Girl 3. Carl Klehm — Prairie Moon
Class 161 Double or semi- double white or blush	1. Carl Klehm — Col. Owen Cousins 2. Carl Klehm — White Charm 3. Carl Klehm — Col. Owen Cousins
Class 162 Double or semi- double coral	1. Carl Klehm — Coral Charm 2. Carl Klehm — not readable 3. Carl Klehm — Etched Salmon H.M. Carl Klehm — Pink Hawaiian Coral
Class 163 Double or semi- double pink	1. Carl Klehm — Cytherea 2. John Simkins — Bess Bockstoce 3. Carl Klehm — Paula Fay
Class 164 Double or semi- double red	1. Carl Klehm — Commando 2. Carl Klehm — Dandy Dan 3. Chris Laning — Old Faithful
Class 165 Japanese, any color	1. Carl Klehm — Show Girl 2. Carl Klehm — Don Richardson 3. Carl Klehm — Dainty Lass
Class 166 Single yellow	1. W. G. Sindt — Clair de Lune
Class 167 Single white or blush	1. 2. Floyd Kimball — Campagna 3. Carl Klehm — Requiem
Class 168 Single Coral	1. Carl Klehm — Salmon Supreme 2. Carl Klehm — Coral 'N Gold 3. Carl Klehm — Salmon Chiffon
Class 169 Single pink	1. Joe Glocka — Friendship 2. 3. John Simkins — Cream Cup H.M. Carl Klehm — Horizon

- Class 169A**
Single red
1. Carl Klehm — **Miss Mary**
 2. Carl Klehm — **Postilion**
 3. Carl Klehm — **Flame**
- H.M. Carl Klehm — **Burma Ruby**
- Class 169B**
Itoh hybrid, any color
1. Carl Klehm — **Garden Treasure**
 2. Chris Laning — **Yellow Heaven**
 3. Carl Klehm — **Border Charm**
 4. Carl Klehm — **Yellow Emperor**

THREE BLOOMS, ONE VARIETY, TREE PEONIES ONLY, IN ONE CONTAINER

Class 170A
Japanese white

Class 170B
Semi-double

1. Carl Klehm — **Gessekai**

Class 171A
Japanese single pink

1. Carl Klehm — **Lilith**
2. Carl Klehm — **Kim Bukin**
3. Carl Klehm — **Companion of Serenity**

Class 172A
Red single
Japanese

1. Carl Klehm — **Red Rascal**
2. Carl Klehm — **Higuri**
3. Carl Klehm — **Hinode Seki**

Class 172B
Semi-double
Japanese

1. Carl Klehm — **Daiow**

Class 172C
Double Japanese

1. Carl Klehm — **Toichi Ruby**

Class 173A
Violet-purple-lavenders

1. Carl Klehm — **Kamada Nishiki**

Class 173B
Semi-double

1. Carl Klehm — **Kamada Nishiki**

Class 173C
Double

1. Carl Klehm — **Kamada Fuji**
2. Carl Klehm — **Kamada Fuji**

Class 174A
Maroon single

Class 174B

1. Carl Klehm — **Kokamen**

Class 175A
Lutea white single

Class 175B
Semi-double

1. Carl Klehm — **Holiday**
2. Carl Klehm — **Holiday**

Class 176A
Yellow single

1. Carl Klehm — **Golden Bowl**
2. Carl Klehm — **Persephone**

Class 176C Double	1. Carl Klehm — Age of Gold 2. Carl Klehm — Golden Mandarin 3. Carl Klehm — Golden Hind H.M. Carl Klehm — Golden Mandarin
Class 177A Single blend	1. Carl Klehm — Mystery 2. Carl Klehm — Savage Splendor
Class 177C Double	1. Carl Klehm — Happy Days 2. Carl Klehm — Harvest
Class 178B Pink semi-double	1. Carl Klehm — Leda
Class 178C Pink double	1. Carl Klehm — Dare Devil
Class 179B Single red	1. Carl Klehm — Banquet
Class 180 Dark red single	1. Carl Klehm — Iphigenia
Class 180B	1. Carl Klehm — Boreas
Class 180C Double	1. Carl Klehm — Vesuvian 2. Carl Klehm — Souvenir Maxine Cornu

ONE BLOOM, TREE PEONY, ONLY

Class 185A Japanese white single	1. Carl Klehm — Joseph Rocks
Class 185B Semi-double	1. Carl Klehm — Renkaku 2. John Simkins — Horam 3. Carl Klehm — Gesseki H.M. Carl Klehm — Godaishu
Class 185C Double	1. Carl Klehm — Haka Benyra 2. Carl Klehm — Tenui
Class 186A Pink single	1. Carl Klehm — Kim Bakeron 2. John Simkins — Shishs Gasaira 3. John Simkins — Kan Semden
Class 186B Semi-double	1. Carl Klehm — Shentenchi 2. John Simkins — Hana Asobi 3. Carl Klehm — Shintenchi H.M. Carl Klehm — Captains Concubine
Class 186C	1. Carl Klehm — Taikan 2. Carl Klehm — Toichi Ruby 3. Carl Klehm — Higure
Class 187A Red	1. Carl Klehm — Red Rascal 2. Carl Klehm — Sugit Getsu 3. Carl Klehm — Red Rascal
Class 187B	1. John Simkins — Ho Hdai 2. Carl Klehm — Daiow 3. Carl Klehm — Gerode Seki H.M. Carl Klehm — Howki

- Class 188B**
Semi-double violet
and shades
1. John Simkins — **Shima dafugi**
 2. Carl Klehm — **Kamada Nashiki**
- Class 188C**
Violet and shades
1. Carl Klehm — **Kamada Fuji**
 2. Carl Klehm — **Kamada Fuji**
- Class 189B**
Maroon semi-
1. Carl Klehm — **Kokoman**
 2. Carl Klehm — **Yakima**
- Class 190C**
Lutea white to
cream double
1. Carl Klehm — **Holiday**
 2. Carl Klehm — **Holiday**
- Class 191A**
Yellow single
1. Carl Klehm — **Gold Finch**
 2. Chris Laning — **Artemis**
 3. John Simkins — **Roman Gold**
- H.M. John Simkins — **High Noon**
- Class 191B**
Semi-double
1. Carl Klehm — **Gold Finch**
 2. John Simkins — **Harvest**
 3. John Simkins — **Helios**
- H.M. Carl Klehm — **Golden Mandarin**
- Class 192A**
Lutea blend, single
1. John Simkins — **Sun Rising**
 2. Carl Klehm — **Savage Splendor**
- Class 192C**
Double
1. John Simkins — **Golden Bowl**
- Class 193A**
Lutea pink single
1. Carl Klehm — **Themis**
- Class 193B**
1. Carl Klehm — **Leda**
 2. John Simkins — **Happy Days**
 3. Carl Klehm — **Happy Days**
- H.M. Carl Klehm — **Leda**
- Class 194A**
Red single — No
name (Gratwicks)
- 1.
 2. Carl Klehm — **Dare Devil**
- Class 194B**
Semi-double
1. Carl Klehm — **Banquet**
 2. Carl Klehm — **Banquet**
- Class 194C**
Double
1. Carl Klehm — **Regent**
- Class 195A**
Lutea dark red,
single
1. Carl Klehm — **Iphigenia**
 2. Carl Klehm — **Iphigenia**
 3. Carl Klehm — **Iphigenia**
- H.M. Carl Klehm — **Black Panther**
- Class 195B**
Dark red semi-
double
1. Carl Klehm — **Boreas**
- Class 195C**
Double
1. John Simkins — **Vesuvian**
 2. W. G. Sindt — **Kronos**
 3. W. G. Sindt — **Vesuvian**
- H.M. Floyd Kimball — **Vesuvian**
- Class 196C**
European Tree
1. Carl Klehm — **Alice Harding**
 2. Carl Klehm — **Souvenir Maxine Cornu**
 3. Carl Klehm — **Souvenir Maxtne Cornu**

DIVISION II. Amateur

Open to exhibitors who raise peonies chiefly for pleasure, sell plants or cut flowers only casually, and do not grow more than 200 plants.

THREE BLOOMS, ONE VARIETY IN ONE CONTAINER.

Class 207 1. Robert Wise — Karl Rosenfield
Double red

Class 210 1. Robert Wise — Alstead
Japanese, any color 2. Robert Wise — Nippon Chief

ONE BLOOM LACTIFLORA IN ONE CONTAINER

Class 220 1. Robert Wise — Susan B. White
Double white

Class 221 1. Robert Wise — Alma Hanson
Double blush 2. Robert Wise — Mrs. Franklin D. Roosevelt
3. Robert Wise — Peppermint

Class 223 1. Robert Wise — Vivid Rose
Double dark pink

Class 224 1. Robert Wise — Karl Rosenfeld
Double red

Class 225 1. Robert Wise — Minnie Shaylor
Semi-double, any color

Class 226 1. Robert Wise — Detroit
Bomb 2. Robert Wise — Big Ben

Class 227 1. Robert Wise — Halstead
Japanese, any color 2. Robert Wise — Nippon Chief

Class 229 2. Robert Wise — Orange Glory
Hybrid, any color 3. Robert Wise — Cytherea

DIVISION III. Novice

Open to all amateur gardeners who exhibit peonies only at local shows.

Class 301 1. Pat Glocka — Kansas, White Cap, Buckeye Belle,
Five varieties any Sylvia Saunders, Westerner
type or color in
separate container

Class 307 1. Pat Glocka — Hari-Ai-Nin
Japanese, any color

Class 308 1. Martha Beal — Sea Shell
Single

Class 309 1. Pat Glocka — Firebelle
Hybrids

ONE BLOOM LACTIFLORA, IN ONE CONTAINER

Class 317 1. Matt Thrush — Nice Gal
Double red 2. Kristine Thrush — Nice Gal
3. Kristine Thrush — Nice Red

- Class 321 1. Martha Beal — Seashell
 Single, any color 2. Matt Thrush — Lancaster Imp

DIVISION IV. Seedlings and New Varieties

- Class 403 Chris Laning — deep red
 One bloom, for Paul Thurman — pink
 display only Paul Thurman — maroon red

- Class 401 Light rose/dusty rose
 Seedlings, three
 blooms one variety

1990 AT KINGWOOD CENTER

This peony exhibit at Kingwood Center was one of beautiful peonies. The showroom was full of colorful bloom, ready to be judged, and the workroom was still overflowing with tables and buckets full of equally beautiful peonies. Peony people were everywhere. The grounds of Kingwood were magnificent with the many beds of various plants. The landscape of the entire area was breathtaking with the beauty of it, especially looking from the Mansion across the long colorful mall. Not only flowers and huge trees make Kingwood a place to remember, but the ducks that waddle across the lush green lawn to their recreation spot, mirrors of water of the fresh clean lakes and the peacocks that strut showing off their finery to all.

Bill Collins, being a pro in making ready for a peony show, had every detail under control. The stage of the show room was banked with peonies and complimentary flowers, arranged by him—work that only an artist could do.

Our appreciation and thanks to Bill Collins and to all the dedicated staff for all the work done for this convention.



Time to meditate
 —Johanna Bodiford

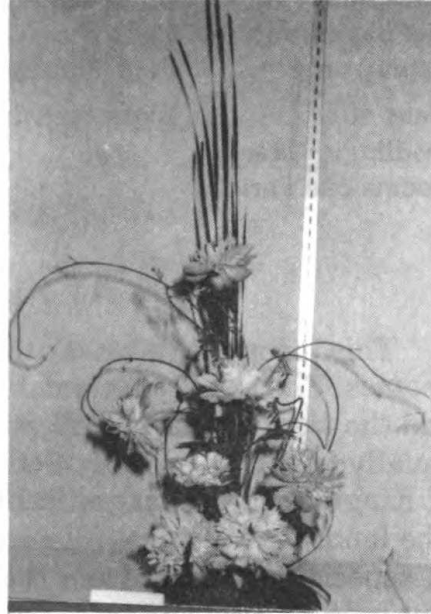


Time for Love
 —Johanna Bodiford



Time to travel—a trip to Japan
—Leila Bradfield

Grand Champion

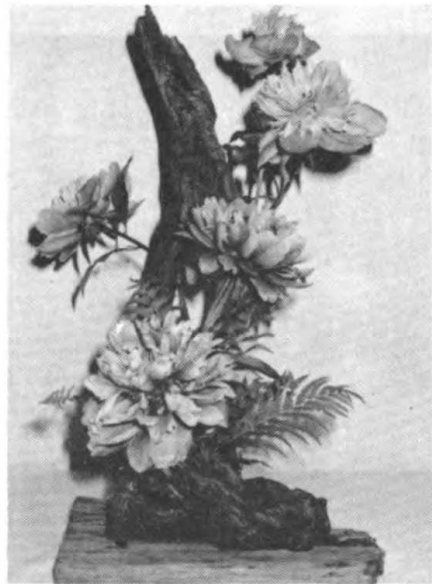


Stitch in time saves nine
—Johanna Bodiford

Reserve Champion



Time to meditate
—Leila Bradfield



Vacation time—a trip to the mountains — Johanna Bodiford



Time for love
—Johanna Bodiford



Time to reflect
—Johanna Bodiford

GOLD MEDAL PEONY

W. G. Sindt, Afton, Minnesota

On Sunday, June 10, 1990 the Board of Directors of the American Peony Society by unanimous vote awarded the Gold Medal to the pink single, **Sea Shell**. This award is well deserved and has come after a long period of outstanding performance in the garden, as a cut flower, and on the show table.

Sea Shell was introduced by Sass in 1937. The description as given in "History of the Peonies," published in 1976, is as follows: "Single - Pink - Midseason. Tall. This pink single was always one of the most admired exhibits at our peony shows. Large flowers of a bright lively pink with a full center of yellow stamens on strong stems. A center of attraction in the garden and simply beautiful as a cut flower. It is one of the best pink singles we have."

Sea Shell has established an enviable record at shows. It has been on the Court of Honor as best single or best pink single at the following exhibitions: 1942—Topeka, KS; 1976—Minnetonka, MN; 1978—Mansfield, OH. In addition to being an excellent show flower, it is outstanding as a landscape plant. The strong stems hold up the blooms even through the spring rains and winds which always occur during peony bloom time. So often our beautiful doubles end up on the ground, but not so with **Sea Shell**.

The Board of Directors also felt that the cost and availability should be a consideration in selecting a Gold Medal Peony. **Sea Shell** is available from practically anyone who sells peonies at or very near minimum prices.

Sea Shell certainly meets the requirements for a Gold Medal Peony. It is an excellent grower, standing up well to spring weather. On the show table it has an enviable record. **Sea Shell** is available from most growers at a reasonable price. Yes, **Sea Shell** is a true Gold Medal Peony, having proven itself for over fifty years.

MINNEAPOLIS - ST. PAUL PEONY EXHIBITION

June 15-16-17

Apache Plaza, St. Anthony, Minnesota

Grand Champion — **MYRON BIGGER**

won by Chuck Klehm, So. Barrington, Illinois

Double white — **Myron Bigger** — Carl Klehm
Double blush — **Doris Cooper** — Alvin Sevald
Double light pink — **Mrs. Livingston Ferrand** — Carl Klehm
Double dark pink — **Myrtle Tischler** — Alvin Sevald
Double red — **Kansas** — Alvin Sevald
Bomb, any color — **Renato** — Alvin Sevald
Semi-double, any color — **Miss America** — Alvin Sevald
Japanese, any color — **Port Royal** — Carl Klehm
Single, any color — **Dawn Pink** — Carl Klehm
Double hybrid — **Old Faithful** — Carl Klehm
Semi-double hybrid — **Prairie Moon** — Carl Klehm
Single, hybrid — **Friendship** — Carl Klehm
Lutea, tree peony any type or color — **Niki** — Carl Klehm
Itoh, any color — **Yellow Crown** — Alvin Sevald

The Minnesota show was large and beautiful, well staged with all types of peonies represented. The date was right for the bloom of the peony. The doubles were open, and the early blooming peonies had been held in cold storage for this exhibition.

Commercial peony growers in this immediate vicinity also exhibited their peonies. The Tischler Peony Garden brought many peonies, and The Sevald Nursery exhibited blooms of all varieties. In addition, Chuck Klehm of the Klehm Nursery, So. Barrington, Illinois, brought hundreds of peonies, new varieties, peonies of every type and color. The peonies were brought by truck. His very efficient staff of people worked tirelessly to put them on the display tables. It was a busy Saturday morning. As the classes for the peonies began to fill, more and more tables were set up to accommodate the large number of flowers. Tables for the commercial growers showing their beautiful varieties were on one side of the regular exhibit, which was very popular with the viewing public.

One word about our judges. Our head Judge, Mr. Harold Thomforde, a peony grower of many years from the Great North Dakota Peony Society, a qualified, experienced peony judge, always called on to judge peony shows, wherever exhibits are held in this upper north-west peony belt, drove over 200 miles to take charge of this show. We thank Mr. Thomforde for the interest and his work in taking on this Minnesota State exhibit.

The Minnesota Peony Society continues to have a peony exhibit every year, always after the National Peony Exhibit.

CHINA — TREE PEONIES IN THE WILD

by Dott. Gian Lupo Osti, Rome, Italy

My peony expedition in China was fatiguing, especially up in the mountains at 3,000m of altitude and more, but we had many unforgettable days with unique sights and events. And we realized our goal, not an easy purpose if it is true what Stephen Haw wrote in his article that it is since Farrer, at the beginning of this century, that tree peonies aren't seen and photographed in the wild. Anyway we saw and photographed *Paeonia papaveracea* (or *P. suffruticosa* var. *papaveracea*, similar to P. Joseph Rock's variety, but not identical), *P. szechanica* and *P. delavayi* in all its forms and colors (or *P. lutea*, *P. delavayi* and *P. potanini*, syn. *angustiloba*, if you don't accept the grouping made by Chinese botanists). We were also in the place where, according to Rehder and Flora Sinica, *P. suffruticosa* var. *spontanea* should grow in the wild (the natural reserve of the Then Thousand Flower Mountain, near Yannan, in the Shannxi Province). But what we saw were the same tree peonies cultivated usually in Chinese gardens plus many natural hybrids and seedlings. And this conclusion was shared by the Director of the Reserve and by our guide, Prof. Hong Tao of the Chinese Academy of Forestry.

I had taken with me an excellent professional photographer who took many pictures of tree peonies in the wild in their natural environment and of tree peonies in cultivation, in gardens and in nurseries. We travelled by air, train and car and we trekked up and down in the mountains, with two mules for carrying our baggage, from Pekin to the border with Burma and Tibet in NW Yunnan, all along the mountains which delimit the western provinces of proper China from Mongolia and Tibet.

THE LURE OF THE SPECIES

Lawrence C. Ellery, Smyrna, Delaware

Reference has been made in the Bulletin about the Species Peony International Network. I am both pleased and honored to be part of this splendid volunteer group, based worldwide. We are attempting to grow and maintain stocks of native Peony species, native to many countries and regions of the world, grow them for their natural beauty, values in reintroducing new blood lines to the hybrid world and preservation of the species themselves. Many areas of the world where the plants grow have been intruded upon and destruction is endemic.

It will be advisable to grow a number of species from different sources to establish if they have developed natural hybrids or intrusions of cultivated hybrids.

I would like to see some studies made to ascertain the medical values our friends the Chinese have relied on for centuries, and still do.

I am questioning some of them now on this subject. They are our oldest civilized scientists on a continuing basis.

Dr. Gian Osti of Italy recently returned from a tour of China where he explored regions for the wild tree peony. The tour was arranged by Dr. Hong Tao of the Academy of Forestry in Peiping. I have been most fortunate to be in correspondence with the good Dr. Tao, who hopefully is going to arrange delivery of fresh seed of a number of wild Chinese peonies this ripening season. The more knowledge we have of the species, the better we will know our commercial varieties.

A lot of the seed distributed, as of the moment, is not fresh or the current season's, some being as much as two years old, so some were given the cold treatment of 60-90 days at 38-40F, then soaked for 24 hours, dipped in a light solution of benlate and planted wet, heavily mulched with hard wood bark, shredded. Some germinated within a few weeks, while others did not show until the following spring. I am anxiously awaiting for the showing of some of the latest plantings. The quantity varied from 6 to 50 seeds. I am at present growing 16 species with more coming in the summer.

The versatility of plants has always amazed me, and it still does. I have taken plants, native to the Arctic regions and brought them to warmer areas, and with a little coaxing, tried to make them comfortable, and they did well. The wide ranging of some genus are self evident of their universality. Thinking quickly, the Heaths are at home in Virginia, from the hay of British troops, to a number of Heaths, native to Alaska, which are beauties when in flower. The orchid, cyprodedium, hardy lady slipper, a colony of pure white, growing near a glacier, about 3 feet tall, with large slippers, and other colors native to our northern states, Martensia, Aconite, Aquilegia and a host of others. The peony is also well represented, *P. californicum* in the dry river beds in California, to the high regions of China and Mid-east mountains.

It is certainly a pleasure to work with such a dedicated group as we have in this organization. We are merely getting started and have loads of work to accomplish, but we are on the way.

I would like to publicly pay my respects to two tireless individuals who are responsible for the good work, Leo Fernig of France and Ray Cooper of England.

—Lawrence C. Ellery, Box 68, Smyrna, Delaware 19977

STARTING A PEONY GARDEN

Harris Olson, Birmingham, Michigan

Peonies are one of the easiest perennials to grow. It is easy to say this now, but in the beginning, such things as the kind of soil, drainage, sun, or shade were factors of no great concern. My early experience in growing a few was not very successful. The plants were not blooming because the trees had become larger, and peonies will not bloom in dense shade. The plants were dug in the spring and moved to a good sunny location, but almost pure sand. To improve the soil, we used fresh manure, good farm fertilizer. Peonies have rhubarb-type roots, and that treatment was good on rhubarb, but those peonies did not survive. So you can understand why help was needed, and that help came from Clarence Lienau. His planting area became a stop-over if I found him working in his field. His cold storage building was made especially for cleaning and packing for shipment, storing and showing his peonies. The walls of the show room were covered with all the ribbons he had won at the National shows.

I sat there as he carved the roots so carefully, digging out the rot and being sure to have two or three eyes. It seemed like a very time consuming job, but his enthusiasm was very catching, and time flew as he told all the ins and outs of peony growing. His soil was solid clay. He let me help him dig some plants.

The shovels were steel handles with extra welded reinforcement. We each had a shovel, and they were put in the clay on each side of the plant, and by jumping on them until they were all the way in the soil, we then pulled back until the plant popped out of the ground. He would leave the plant as it was dug, in the sun, so the roots would soften and could be carved without losing too much. When he carved, it was a production line, carefully labeling, so as not to make a mistake. He used a special knife. He knew just how much root was necessary to save. Clarence helped select the location for my first big planting. Almost full sun, good drainage, with good garden soil. He had me dig \$50.00 holes for all the roots. At the time it seemed these big holes filled with compost, bone meal, well rotted manure were more than was necessary, but that was many years ago, and I keep telling people the peony bed will remain for my lifetime as it is. We covered all the good things in the holes with extra dirt, so the root planted would not touch the prepared fertilizers, but would grow into it. Planting each root 1½ inches below the surface and hilling the first year to prevent heaving is necessary.

Many of the tree peonies came with a string tied to the root to show how deep they should be planted. One tree peony was not planted deep enough, and it is kept to show what happens. Since tree peonies are grafted using a herbaceous root, the root grew much larger than the tree peony single stem. It is still alive but in trouble.

The first year after planting in October and November was a good season, as we had ample snow cover. In this planting, with the good holes in the beginning, we have done little or no fertilizing over the years. We planted the herbaceous roots a yard apart and the tree peonies at least five feet. Garden visitors keep asking, "What is that flower?" when viewing the tree peonies.

The peonies are not staked, and those that fall into the grass are cut for bouquets for garden visitors. Peonies of all types should be used in any garden.

We mulch the beds with wood chips to keep down the weeds, never using a weed preventer in these beds, because we let all seeds mature and fall into the wood chips. Now every year we have a good crop of peony seedlings, which we pot and give away. It seems to take two years for peony seed to germinate and three more years to flower in herbaceous, with a couple extra years for tree peonies. I do not know the germination pattern, but some years we get more seedlings than others. What a thrill when you get an unusual or different seedling.

In the fall we cut the herbaceous to the ground and use a blower on the tree peony leaves to make the beds as clean as possible. This makes it easier to spray in the early spring for fungus. In addition in growing peonies from seed, we tried layering, with not much success.

How did we select the peonies we planted? I was lucky because Clarence did it. He knew what we wanted, all types and colors, and he knew just where to get them. He did a great job, and I will also say that there are no peonies that you will not like—only some you will like better.

The first early bloom is *tenuifolia*, a peony every one should grow, because it is different. For early bloom, **Starlight** and **Clair de Lune** stand out, and there is **Red Charm**. When the beds are in full bloom, a beautiful sight. For a tree peony, I think **Gauguin** would be a first.

One year, to show tree peonies at a daylily convention in the south, I cut buds about half open, and the people could not believe they were real. They thought they were paper. We are very lucky to grow these wonderful flowers.

I would like to mention some problems. Ants are always the first question asked. How do we get rid of them. I explain about the sugar on the bud and that we do not think they do much harm. They could carry the fungus disease, but that is questionable. They are not necessary to open the buds. The only other problem I've had is *Botrytis Blight*. The leaves on some branches of the tree peony wilt, and these are cut off and burned.

Herbaceous peonies wilt at ground level. This is more difficult to control. I spray with Bordeaux or Benlate and have quite good control. **Paula Fay** seems to be affected each year, even though the soil has been changed. Out of 50 tree peonies only 8 or 10 branches a year are affected with blight, so that is not too serious.

Up to now, I have been writing about the church planting of about 150 varieties of tree and herbaceous peonies, which is now 15 years old and doing good. With this experience, I put in two beds at the Detroit Zoological Gardens with over 200 plants, many contributed by our generous Peony Society members. The two beds are nine feet wide and 108 feet long. In preparing the beds, I think they used elephant manure, with much more in one bed than the other. I will start bone mealing, so both beds will look equal in size of plants.

Peonies of great interest at the zoo gardens are the Itoh hybrids. The bushes are round and compact, with one having seven blossoms this year.

These beds are planted with daffodils for early spring bloom and edged with tall marigolds for fall bloom. Much praise is given, and it is with thanks to you.

At the zoo gardens, we contend with ground animals and nesting of birds. One duck nest had seven eggs. The peonies do not mind.



*Peonies at Detroit
Zoological Gardens, 1990*

American Peony Society Seed Distribution for 1990

From F. G. Cochrane, New Zealand —

P. lutea
P. delavayi
Moly

From Mrs. J. Allen, New Zealand

P. ludlowii

From Chris Laning

lactiflora — select
tetraploid mix — select

An expanded list including *suffruticosa* (T. P.) seed and others will be in the December issue of the Bulletin.

Please send \$2.00 to cover packaging and mailing expense.

Address: Chris Laning, 553 West F. Ave., Kalamazoo, Michigan 49007

TREE PEONIES, BOERNER BOTANICAL GARDENS, HALES CORNERS, WISCONSIN

Joseph Glocka, West Allis, Wisconsin

It is hard to imagine that the noble tree peony, or "King of Flowers," was so zealously guarded throughout history that only a few were permitted to gaze upon it, let alone own it. Chinese rulers dating back beyond 1,400 years decreed that the tree peony could only be planted in royal gardens.

However, since about the turn of the 18th century, the tree peony managed to escape China, due primarily to adventurous explorer-botanists. Today, tree peony varieties have proliferated much to the delight of thousands visiting botanical gardens and arboretums in the western world.

Such is the case at the Boerner Botanical Gardens in Hales Corners, Wisconsin, a suburb adjacent to the City of Milwaukee.

Boerners boasts a treasured collection of tree peonies, both foreign and American, originations numbering well over fifty.

Tree peonies at Boerners are relegated to five planting areas and list as follows:

ANNUAL GARDEN

Shujakumon
Yae-Zakura
Chinese Dragon
Howdai
Vesuvian
Marie Sagumot
Adyuma Kagami
Roman Gold
Duchesse De Morny



Thunderbolt
Boerner Botanical Garden

NORTHEAST SHRUB MALL

Renkaku
Angelet

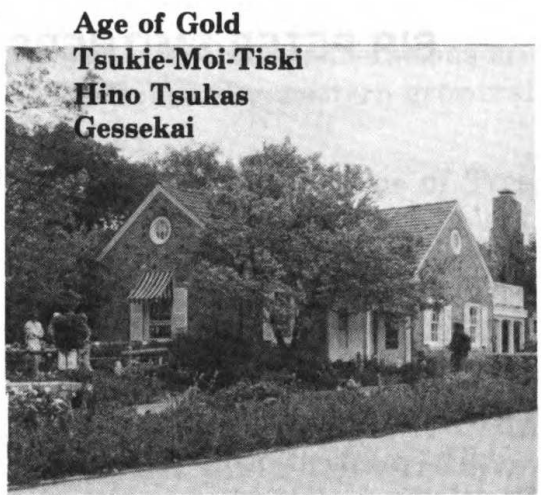
EAST SHRUB MALL

Yoyo-No-Homare
Ukaregi-Ohi
Hatsu-Hinode
Rocks Variety
Thunderbolt
Souvenir de Mme.
Knorr
Shin-Kagura
Black Panther
Surprise
Renown



Age of Gold
Boerner Botanical Garden

Taiyo	WEST SHRUB
Horaisan	MALL
Mine D'Or	Renkaku
Canary	Beikoku
Shugyo-Kuden	Anyo-No-Kikare
Hodai	Alice Harding
Hana-Daigin	Golden Vanite
Kamata-Nishiki	Weisse
Haku-Banriu	Golden Hind
Taisho-No-Hokori	Nissho
NORTHWEST	Hatsu-Garashu
SHRUB MALL	Mystery
Kimi-Gayo	Hinode-Sekai
Tamafuya	Jeanne D'Arc
Silver Sails	



Boerner Garden House

Although most tree peonies grown are of foreign origin, a few, and growing in number, are the result of extensive hybridizing efforts by Americans. Topping the list are a peony hybridizing pioneer Dr. A. P. Saunders, whose lifelong avocation brought to light new generations of peonies which would never have occurred in nature. Saunders originated **Age of Gold**, a brilliant yellow, among others. Joining him in his work were two other notables, William Gratwick and Nassos Daphnis. The Gratwick collection includes **Companion of Serenity**, a soft light pink semi-double with pinkish flares, and **Guardian of the Monastery**, a blend of cream, pink and lavender with purple flares.

Various other hybridizers in recent years have met with spectacular success, notably Dr. David Reath, who brought to light **Alice in Wonderland**, a deep dandelion yellow with thirty petals and red and maroon flares. On the scene, too, are Don Hollingsworth with **Garden Treasure**, a semi-double yellow, and Roger Anderson, with **Bartzella**, yellow semi-double, and **First Arrival**, a deep pink semi-double with lavender flares. Hollingsworth and Anderson represent a new breed of hybridizer for pursuing and developing a technique which crosses tree peonies with the herbaceous and are commonly known as ITOH.

William Radler, garden director of the Boerner Botanical Gardens recommends **Rock Variety**, a fluffy pure white bloom with rich inner purple flares. It is the hardiest of tree peonies at Boerners and is best for growing in the Milwaukee and Wisconsin climate.

The collection of tree peonies at Boerners were augmented by procurements from the Reath Nursery, Vulcan, Michigan, Klehm Nursery, Barrington, Illinois, Andre Viette Farm & Nursery, Fishersville, Virginia, and Wayside Gardens, Hodges, South Carolina.

Gardeners interested in pursuing a knowledge of tree peonies created in this country can purchase a recently published work titled "The American Tree Peony." It is brilliantly illustrated in full color and contains short biographical notes on participating American hybridizers. The price is \$25 and can be ordered from the American Peony Society, 250 Interlachen Rd., Hopkins, MN 55343.

**SIR PETER SMITHERS 6921-VICO MORCOTE
SWITZERLAND**

Tel. - (091) 69-19-73

Fax. - (091) 69-16-92

"A Book of Tree and Herbaceous Peonies in Modern Japan," by Ryoji Hashida, may be ordered from the publishers: The Japan Botan Society, 1-2-11 Honcho Honcho, Tatebayashi City, Gunma Prefecture, Japan. Yen 22,600. ISBN4-06-204812-4 Copyright Nihon Botan Kyokai 1990.

The publication of this book by the President of the Japan Botan Society is a watershed in the history of the cultivation of Japanese Tree Peonies in gardens throughout the world and in Japan itself. The actual methods of cultivation of these wonderful plants are well understood and easily ascertained by anybody who cares to refer to the literature. But the identification of named varieties, of which many hundreds have been introduced since cultivation began in Japan in the seventh century A.D., has been in total and hitherto irremediable confusion.

The reasons for this are complex, and are not by any means solely the fault of the Japanese exporters. At least until recently, these plants were propagated in large numbers by farmers, who in turn sold them to nurseries, who passed them on to the public. The farmers were not necessarily dedicated to precise nomenclature so that the nurseries, unless they were to go to the trouble of proving each plant in flower and identifying it, were in the hands of the supplier. It is also the case that the same plant might be known under a different name in the various peony-growing regions of Japan. Thus it is that in my own collection of over 100 Japanese varieties there are many whose name is uncertain.

Hitherto the illustrated texts have consisted mainly of nursery catalogs and one or two small popular booklets published in Japan. In few of these are the plants illustrated in such a way as to display the identification characteristics. The pictures, few in number, have usually been taken only with aesthetics in mind. At last we have an illustrated text compiled specifically with the purpose of enabling the plants to be identified and named from the illustrations.

Mr. Hashida himself took almost all of the photographs. They display clearly the petal structure, the capsule and stamens and in most cases the foliage. The color is a matter of great difficulty because of the near impossibility of conveying in printed form subtle differences of shade, particularly of red and purple. Thus flowers which appear to be the same color in the illustrations will be slightly different in real life. However, color is a less accurate characteristic for identification of flowers than is petal shape and flower structure.

The naming of the plants has been decided by a Committee of the Japan Botan Society. This evidently presented great difficulty even in

Japan itself. Now, however, that the results of their deliberations are available, there is no room for further argument by western growers! We had better accept authority.

The book, which describes and illustrates 306 varieties of Tree Peony, should enable the gardener to name correctly any named plant which he is likely to have obtained for his garden. Of course, if the plant is a seedling, it will not have a name; but in this case it will usually be possible to describe it by stating that it is somewhat similar to one or other of the photographs and noting the differences.

The main text of the book is in Japanese. It would be most useful for English speaking gardeners if a pamphlet with a full translation could be supplied. Perhaps the American Peony Society could be persuaded to undertake this? But fortunately Mr. Hashida has provided English translations of the short descriptive capsules, and the name of each variety is also supplied in the Roman alphabet. There is also an index on the names in Roman characters, so that it is not necessary to scan the pages to find a variety by name.

The illustrations and descriptions in the book are of Peonies cultivated in Japan. Those of Japanese Tree Peonies — Botan — are arranged by color. This is followed by a chapter on remontant Japanese varieties. Then come some Chinese varieties (Moutan), some old French hybrids from *P. lutea*, some old American hybrids, a number of sections showing herbaceous peonies, a section on the Itoh hybrids between tree and herbaceous peonies, and a section on species. Finally there is a series of numerous beautiful small facsimiles of ancient colored illustrations of Japanese peonies.

The parts dealing with French, American and Herbaceous Peonies will probably be of less interest to western readers, since fuller information about them and their identification is more readily available from the American Peony Society publications. But the main part of the book dealing with Japanese Tree Peonies is the long-awaited answer to the prayer of the grower of these plants who has hitherto been unable to be sure that he enjoyed them under their correct names. However, I am bound to wonder how many hours of work it will take me next April to re-identify my plants and to re-write a very large percentage of their labels. Never mind: it will be worth it!

—Peter Smithers, Vico Morcote, Switzerland, 26 June 1990

* * * * *

A peony will last a lifetime, if given some care. Patience and Peonies go together. Give a new plant a year or two to develop into maturity. The third and fourth year will be most rewarding as to bloom and it will continue for years.

Do not remove the foliage of your peony after blooming. The plants secure nourishment in form of oxygen and nitrogen through the leaves. When cutting the bloom for the house leave at least two sets of leaves on each stem. Do not cut all flowers from the plant. It is better to leave at least half the bloom.

CULTURE OF THE PEONY

The peony stands at the head of the list of hardy plants, since it will live year after year even if totally neglected. But, like corn and potatoes, it must have intensive cultivation to come to its greatest perfection. It is for those persons who like to give the plant the best chance possible to show what it can do that the following cultural directions have been prepared.

Location and Soil. Peonies should be planted where they will receive full sun and where the soil will not be impoverished by the roots of trees and large shrubs. A well-drained soil is necessary to good results, as peonies will not do well when the ground is wet and soggy. The heavier soils produce the best blooms.

Preparation for Receiving Plants. If a regular bed is to be set out, begin preparations a month before the plants arrive. If the soil is fairly good garden soil suitable for raising vegetables, plow or spade to the depth of eight inches. Then work up the soil, level it off, and leave until time to set the plants. Top fertilization will be sufficient. But if you have filled soil of poor quality dig it out to the depth of two feet. Fill in about a foot of well-packed compost, humus, and/or well-rotted manure. Then continue with twelve inches of good garden soil, packing it down and leaving it to settle.

To produce the finest blooms, peonies should be planted three feet apart each way. Four feet is better. They should not be placed where the soil will be sapped by the roots of large trees or where they will be crowded by other plants.

Set the plants so that the tops of the pink or white buds will come two inches below the surface. Work the soil in around the roots with the fingers. Press down firmly with the heel, being careful not to injure the buds. Then fill the hole with loose soil and mound it up about two inches above the surrounding surface. This last step insures the shedding of water during the first winter. After the ground is frozen, apply a light mulch of straw, wild hay, or corn stalks.

Cultivation. When gardening time comes in the spring, remove the mulch and level the mound. As soon as the buds appear above the ground, begin cultivating, and cultivate until the plants are in bloom. The soil should be stirred to the depth of two inches close to the plant and three farther away. If the plants are in rows, cultivate to the depth of six inches between the rows. After the blooming season cultivate enough to keep down the weeds.

If the peonies are planted as specimens on the lawn, the sod should be removed around each plant in a circle at least three feet in diameter. The soil from which the sod is removed should be continually stirred in the spring from the appearance of the plants until the blooms are about to open.

Watering. In times of drought, give an occasional thorough watering. A liberal supply of water during the blooming season will help

greatly to make fine flowers. A good way to water is to dig a little trench around a plant about six inches from the stalks and pour in two or three pails of water at a time. Where plants are in rows an entire row may be easily watered by digging a trench on each side and filling from the hose. Such a watering will last for a week. The ordinary sprinkling is useless. After the blooming season, cease watering.

Cutting Back the Plant. In cutting flowers, be sure to allow at least two leaves to remain on each stem to insure root growth for another year. After the blooms have fallen, cut off the flower buds and trim the plant enough to make it shapely. In this way it will remain an attractive feature of the garden throughout the summer. In the early fall it is safe to cut the stalks to the ground.

Winter Protection. In such localities as Illinois, Ohio, and southern Iowa, snow cannot be depended upon to furnish continuous covering; and in northern Minnesota, North Dakota, and Canada, high winds often sweep the ground bare of snow. Here the ground is likely to heave, and a light covering such as has been recommended for newly set plants should be furnished each winter. But in northern Iowa, southern Minnesota, and Wisconsin, where the ground is covered throughout the winter with more or less snow, no mulch is necessary after the first year.

Why Peonies Do Not Bloom. "Why don't my peonies bloom?"—this is one of the most common questions that come to our office. We are going to give what we believe are the chief causes of failure with peonies. Each person will probably be able to determine the one or ones which apply to his peonies.

A common cause of trouble is lack of cultivation. Peonies are often planted in the lawn and the grass allowed to grow up into the roots. You would not expect a good crop of corn or potatoes under such conditions. Peonies, like garden crops, need thorough cultivation.

Peonies need abundant food and moisture. If they are planted near large trees, the soil will be robbed of both water and food elements. As a rule, the roots of large trees sap the soil for a distance equal to the height of the tree. Grass may do well under and near trees, but peonies will not.

Peonies need sunshine. They should not be planted where they will not receive it for a large part of the day.

Too deep planting is, perhaps, the most common cause of lack of bloom. Peony roots, as has been said, should be so set that the little pink or red buds will come two inches below the surface of the ground. If set deeper, the buds will form up on the stem instead of on the fleshy root and are not likely to produce flowers.

Everyone knows that the peony may be propagated by root division; that is, that if a new plant of *Festiva Maxima* is wanted, it may be produced by cutting from an old clump a division consisting of a portion of the root with a part of the crown adhering. But some per-

sons may not know that a new plant of **Festiva Maxima** cannot be produced also by planting seed from this variety. But the fact is that the modern peony is the product of many crosses, and so does not "come true" from seed. That is, even if plants of a single variety are so isolated that they cannot be fertilized by the pollen from another variety and the seeds produced are planted, the seedlings resulting will give flowers that vary widely in color and form. The plants themselves will differ in color of foliage, habits of growth, etc. Every one of the seedlings may be inferior to the parent stock; but, on the other hand, one or more may prove superior to it, in some important characteristic at least. Thus, we see that although seeds cannot be used in the propagation of old varieties, they are the essential thing in the production of new sorts.

Now, if different varieties are grown side by side, wind, bees, and butterflies will carry pollen from bloom to bloom and thus bring about cross-pollenization. The seeds thus produced will, of course, bear much greater possibilities of variation than those produced by a single variety. And if the parent stocks are fine varieties, their descendants are more likely to be worthwhile than are the descendants of common stock.

(The Culture of the Peony was taken from a peony manual written and published by Mr. A. M. Brand in 1923-1924. This material was submitted by Myron D. Bigger, Topeka, Kansas.)

REGISTRATIONS

PROMENADE (P. C. Laning) Introduced by Caprice Farm Nursery, Sherwood, Oregon, April 26, 1990.

Seedling number Serenade F-. Herbaceous hybrid, semi-double.

Parentage — Third generation, *P. lactiflora* x *P. macrophylla*.

First bloomed 1977.

Blush pink, with pink overlay, average amount of bloom, flat form, good substance, has pollen, seeds, no fragrance. 24 inches height, excellent stem strength, with heavy dark green foliage. Early season of bloom. Tetraploid, fertile both ways.

Registered Caprice Farm Nursery.

DOJEAN (Sir Peter Smithers, 6921 Vico Morcote, Switzerland, May 4, 1990)

Seedling number 30350 tree peony.

Parentage, *Hindo Deseikai* x *Suffruticosa*, Rocks variety, U.K. form.

White, crimson pink capsule, good substance, pollen, seeds, reliable as Rocks variety. The stem strength has the vigor of the seed parent, probably attains the height of seven feet, blooms in late April, very vigorous plant with foliage, same as Rocks variety.

The white capsule of Rocks variety has been replaced by the crimson of the Japanese parent (RHS63A). Flares much redder than in Rocks (RHS 58A). Flower form and substance as in Rocks. Rocks sometimes has a pale pink flush. This seedling is dead white. (The picture shows 20 or more petals. I would make it a semi-double. —Comment by Don Hollingsworth.)

RUSSELL EMERICK PEONY

William H. Krekler

In the last Bulletin, Cheryle McCloskey asked for information as to where she could get Russell Emerick. This peony was named for my brother-in-law. I only increased this variety to about two dozen plants. Then because of its demand, I sold all of it. A note to peony breeders: Keep propagating your good varieties and never, never part with all of your stock.

Now a little about Russell Emerick. It gives me more joy than any of my flowers, it being my first peony creation. I was going down my many rows daubing pollen when I came to a tall white double, a plant of outstanding quality, that I did not remember. I looked it up in my record book and "whoopie" it was a seedling of mine. I nearly burst with pride and showed it to all that came to the fields. I gave a division of it for the Emericks to plant in the yard of their old farm homestead about a mile south east of West Elkton, Ohio. That is the only location that I remember. Klehms may have a plant, but I doubt it.

WHAT RESULTS MAY BE EXPECTED FROM YOUR PEONIES

The first spring after planting, a standard division will make one or more stems six or more inches high. Do not be discouraged if the growth is low and only one stem appears. It may bloom and it may not. There is nothing to worry about if it does not. Many of the most successful growers never allow a plant to bloom the first year. If you cannot resist the temptation to let it bloom, cut the flower as soon as it fades, immediately below the bloom. Do not allow seed to form. These first-year blooms are often not typical of the variety. If they are not, do not write the grower that the plant is untrue to name. You are probably mistaken. They rarely give you a true picture of the variety.

The second year, the number of stems is usually double the number that came the first year, and the growth is taller. The blooms, if any, are nearer normal. Cut all blooms immediately after flowering, with short stems. Some varieties take several years to make normal flowers or even any kind at all. The third year growth, also, generally doubles that of the second year and the blooms should be normal in every way. Do not cut the stems too long. After the third year, the increase is slower and after the eighth or tenth year, there may be none. The finest flowers are produced from plants four to ten years old, though many varieties may give exhibition blooms for twenty or more years. Plants, that have been well cared for, will often live longer than the owner. There are many from fifty to a hundred years old that are still going strong. If they are forced into abnormal growth by the use of stimulants they will give out in a few years.

* * * * *

***If you cut a tree, plant a tree.
It is nature's replaceable energy.***

A HISTORIC PEONY COLLECTION AT NICHOLS ARBORETUM

*By Douglas Pearsall, Marvin Pettway, and H. L. Morton
School of Natural Resources, University of Michigan,
S.T. Dana Building, Ann Arbor, Michigan*

Located in Ann Arbor, Michigan, Nichols Arboretum of the University of Michigan maintains a large formal garden of 786 peonies including 230 cultivars. The peony garden dates to 1922, when the W. E. Upjohn family donated the original plants. Aubrey Tealdi, U. of M. Professor of Landscape Architecture and then Director of the Arboretum, laid out the plants in a formal arrangement of 27 beds, a design that has been maintained to the present. When the Arboretum was opening to the public in 1927, the Garden contained 280 cultivars, and over the next five years, another 38 were added. Of these original 318 cultivars, 196 still remain, making the Arboretum a significant repository of old peony cultivars.

History of removals, additions, and maintenance in the Peony Garden between the years of 1934, when Tealdi retired as Director, and 1970 is sketchy at best. During this period 41 cultivars were added, but 133 were removed or lost as maintenance declined until 1970 when the weeds that had overgrown the beds were removed. Since then, the Garden has been regularly tended and mulched with wood chips to enhance the appearance and keep the weeds at bay. Currently there are 224 verified and 10 unidentified cultivars that provide a spectacular show in May and June. Data on sprouting, flowering dates, and heights have been collected since 1988 and will continue to be monitored in order to provide a reference on the performance of these older cultivars in southeastern Michigan. Incidence of disease and pest problems are also being recorded.

The Peony Garden is considered one of the Historical areas in Nichols Arboretum and the future management will reflect this through a policy of adding only cultivars from the original collection. It is the primary goal of the Arboretum to restore any cultivar that previously existed here and remove all plants that cannot be identified. Below is a list of the original cultivars since lost, but now being sought. Information regarding donation or sources for purchase of these is needed for the historic restoration of the collection. Readers with information are requested to contact us.

For a self-addressed, stamped envelope, Nichols Arboretum will provide area maps, lists and locations of plant collections, and information on currently-available peonies, including a plat map. Those who can help us restore our peony collection please write:

Harrison L. Morton, Director
Nichols Arboretum
School of Natural Resources
S. T. Dana Building, 430 East University
Ann Arbor, Michigan 48109-1115

TABLE 1. Original Peony Cultivars being sought by Nichols Arboretum

A. P. Saunders	Enchanteresse	Kelway's Glorious
Addielanthea	Estafette	La Lorraine
Alex D. Vories	Eugene Bigot	Lady Curzan
Ama-No-Sode	Eugene Reignoux	Lady Kate
Attraction	Evangeline	Lafayette
Avalanche	Felicity	La Fee
Ball O'Cotton	Flag of Truce	La Fontaine
Baroness Schroeder	Flamboyant	Laura Dessert
Beauty's Mask	Frances Shaylor	Luella Shaylor
Bishop Burke	Francois Rousseau	Mable F. Franklin
Black Prince	Frankie Curtis	Marcelle Dessert
Blanche King	Fuyajo	Marguerite Dessert
Brand's Magnificent	Germaine Bigot	Marie Jaquin
Candidissima	Gisele	Mary Vories
Delicatissima	George Hollis	Masterpiece
Desire	Gismonda	Mathilde de Roseneck
Dog Rose	Gloire de Charles Gombalt	Midnight
Dorchester	Golden Dawn	Midsummer Night's Dream
E. B. Browning	Gypsy	Mireille
E. G. Hill	Harriet Farnesley	Mischief
E. J. Shaylor	Hazel Kinney	Mlle. Leonie Calot
Edmund About	Iamate-Boku	Mlle. Marie Calot
Edulis Superba	James Kelway	Mlle. Rousseau
Elie Chavalier	Jessie Shaylor	Mme. Bucquet
Elizabeth Queen of the Belgians	Judge Berry	Mme. Crousse
Mme. de Galhou	Pierre Ducharte	Venus
Mme. de Treyeron	Pink Baroness	Victorie De La Marne
Mme. de Vatry	Shroeder	Virginie
Mme. Francois Toscanelli	Poete Frederick	Virgo Maria
Mme. Geisler	Mistral	Walter Faxon
Mme. Jules Elie	Potsii Alba	W. F. Christman
Mme. Leonie Calot	President Wilson	William Penn
Mme. Manchet	Prince of Darkness	Wilton Lockwood
Modele de Perfection	R. P. Whitfield	William F. Turner
Modeste Querin	Rachel (Lem.)	
Mont Blanc	Raoul Dessert	
Mrs. A. G. Ruggles	Rita	
Mrs. Edward Harding	Rosa Bonheur	
Mrs. George Bunyard	Samuel Henshaw	
Mrs. John M. Lewis	Seiriu Somae	
Mrs. John Smythe	Snowwheel	
Fogg	Solfatore	
Nancy Dolman	Some-ganoko	
Neil Shaylor	Souv. de Francis Fuiffan	
Nellie	Souv. de General Gallieri	
Nina Secor	Stanley (K)	
Norfolk	Sunbeam	
Old Silver Tip	Suzanne Dessert	
Philippe Rivoire	The Queen	
Phoebe Cary	Thomas C. Thurlow	
Phyllis Kelway	Tragedy	

ANNUAL MEETING AND BANQUET

The annual meeting and banquet was held in the assembly room at Kingwood Hall, June 9, 1990. The banquet was served buffet style. The serving tables were laden with a variety of delicious food. A beautiful sight, all ready for the members as they came promptly at seven o'clock. Every one served themselves and soon found their place at the dining tables.

Lois Klehm was called to deliver the invocation. William Collins of Kingwood welcomed all those attending the meeting. Dr. Crossley asked that every member introduce themselves and the state they represented.

We were honored to have Mr. and Mrs. Tony Banks of Alexandra, New Zealand, also Henk De Ruiter of Aalsmeer, Holland, and Jan Ruyter of The Netherlands, attend the convention and exhibition.

Immediately after the banquet, the business meeting began with the nominees read for the Board of Directors for the following three years: John E. Simkins, W. G. Sindt, Chris Laning and Frank Howell were placed in nomination for another three year term. Also the names of George Allen and John Elsley as nominees for a full three year term, the names of Scott Reath and Steve Varner to fill the unexpired term of two board members.

President Crossley asked for any further nominations from the floor. There being none, a motion was made and seconded. It was unanimously voted that all nominees be elected.

The financial report and report of all business activities for 1989-1990 was passed to all members. Dr. Crossley reported that he had verified all money in the report of the Treasurer. He had checked the books and verified the money recorded. The financial report was accepted unanimously.

At this time the Court of Honor flowers and their exhibitors were read to the members.

President Crossley called for any new business that should be brought to the floor, along with any old business. There being none, the business meeting was closed.

Now it was time for the special event that is always anticipated with pleasure, the annual auction. Peony roots are always donated by the members and sold to the highest bidder. Roots are sent to that person at peony planting time. Gus Sindt was the auctioneer. Thank you, Gus.

Greta M. Kessenich, Secretary

BOARD OF DIRECTORS MEETING

June 10, 1990

The Gate House, Kingwood Center, Mansfield, Ohio

The meeting of the Board of Directors was called to order by President Crossley at 8 a.m. The directors present: Joe Glocka, Wisconsin; W. G. Sindt, Minnesota; Chuck Klehm, Illinois; Chris Laning, Michigan; George Allen, Ohio; Lois Klehm, Illinois; John Simkins, Canada; Steve Varner, Illinois; Greta Kessenich, Minnesota; and two absent members sent their vote by proxy, namely Myron D. Bigger, Kansas; and Roy Klehm, Illinois. Although absent, Don Hollingsworth directed a part of the meeting by a written statement.

The new directors were welcomed by President Crossley. The minutes of the last board meeting in Janesville, Wisconsin, were read and approved. The first order of business was to elect officers for the following year. A motion was made that the present officers, those of President and Vice President continue on for the following year, as the Vice President, Mr. Schmidt, was suddenly hospitalized. This motion was unanimously approved.

Greta Kessenich will continue serving as Secretary and Treasurer. The motion was also unanimously approved.

A discussion followed for the convention site and dates for 1991.

For 1991, the annual meeting and exhibition will be held at the Royal Botanical Gardens, Hamilton, Ontario, Canada, June 7-8-9.

For 1992, Chicago Botanical Gardens, Glencoe, Illinois, date to be arranged later.

For 1993, Minneapolis, Minnesota, tentative.

At this time the gold medal peony was selected. Presently under consideration are: **Roselette, Moon River, Hana Kisoi, Black Pirate, Sea Shell, Shentenchi and America.** Douglas Brand, Old Faithful and Princess Margaret were added to the list. Sea Shell was awarded the Gold Medal.

Money was approved for an additional 1000 copies of the new American Hybrid Peony book, also for a hard bound cover.

The American Peony Society was founded because of the utter confusion of the nomenclature in 1903. Through the years, rules and regulations have been made and followed until we have a recognized correct nomenclature with international registration authority. At this late date, a change in nomenclature has been brought before the Board of Directors. It was voted unanimously by all the members of the board present and those by absentee ballot that no change be made in our nomenclature, as to the grex terms. All new coinage of words were rejected, and the spelling of proper names be continued as has been published in the past.

A discussion followed regarding judges and judging. This meeting to be held at some time to be announced on the Saturday of the conven-

tion. Committee: Gus Sindt, John Simkins, and Steve Varner.

President Crossley asked if there was any more business that should be brought before this Board of Directors meeting. There being none, the meeting was adjourned at 10:15 a.m.

Greta M. Kessenich, Secretary

REPORTING — June 1989 - June 1990

All the members of the American Peony Society have one common interest, and that is the peony. We can write, talk and communicate about a certain variety knowing that peony is recorded in our nomenclature, with the name of the hybridizer and description of the flower. All that is in our check list book.

But now in these modern times, requests have been received that pictures of peonies in color be made available for the membership.

At the last Board of Directors meeting in June, it was decided that money be spent on such a project. We will have a book on the hybrid peony and the flowers will be in color, including some species.

The photographs of the hybrid peonies were taken by our members in their garden. Many hours have been spent on this project. The book will be available so that an announcement can be made in the September 1990 Bulletin.

With the increase in cost of all material and extra expenditures on the coming book, the assets show an increase over all expenses for the year. All bills are paid to date.

Statements were mailed for payment of dues, the last week of November, for the following year. Your prompt reply was so appreciated. Our thanks to you for sending along a letter telling about your interest, your peonies and garden. Now is the time to check your peonies for fragrance. We would like your list.

Bulletins are mailed two weeks before the designated month for publication. Your change of address is so important. Please keep us notified.

We thank you for your support given this past year, in renewing your membership. This together with the books purchased, we are able to meet all commitments.

Sincerely,
Greta M. Kessenich
Secy./Treasurer

FINANCIAL STATEMENT

June 1, 1989 - June 1, 1990

Balance on Hand June 1, 1989 \$ 72,591.87

Receipts:

Membership Dues \$ 8,079.35
 Advertising 407.50
 Rent: Colored Slides 36.00
 A.P.S. Auction 1,251.00
 Registration Nomenclature 45.50
 Contributions 83.60

9,902.95

Publications

Handbooks 1,660.96
 "The Peonies" 399.00
 History of Peonies and Their Originations 380.00
 Book, A.P.S. "75 Years" 511.00
 Book, Peonies 1976-1986 420.00
 American Tree Peony Book 1,952.50
 American Peony Society Emblems 499.50

5,822.96

Interest on Savings 7,628.16

Total Receipts \$ 23,354.07

\$ 95,945.94

Disbursements:

Publications — Four Bulletins:

June, September, December, March \$ 5,949.00
 American Peony Society Postage 2,105.57
 Office Supplies 891.60
 Exhibitions 322.50
 Printing 7,867.94
 Miscellaneous 51.00
 Refund 85.00

Total Disbursements \$ 17,272.61

Balance on Hand June 1, 1990 \$ 78,673.33

Greta M. Kessenich
 Secy./Treasurer

PEONIES FOR 1990 FALL DELIVERY—

From our originations: **Garden Treasure**. Plant Patent 5718, and **Border Charm**, both yellow flowered Itoh Hybrids; **Many Returns** and **Show Girl**. Other select varieties: **Carina**, **Cytherea**, **Elizabeth Foster**, **Ludovica**, **Paula Faye**, **Red Charm**, all midseason hybrids, and **Roselette**, very early hybrid, full sized peony.

In 1985, we embarked upon the expansion of our peony project to include the deliberate propagation of rare and choice peonies for distribution. This offering reflects our first harvest under this program.

Write/call for detailed descriptions. Also, we welcome your inquiry for any other varieties or breeder plants desired.

DON HOLLINGSWORTH PEONIES
5831 North Colrain Avenue
Kansas City, Missouri 64151
816/741-4739

SPECIAL PEONIES from my garden for fall planting.

Yellow Dream (Itoh) @\$50.00/division
Yellow Heaven (Itoh) @ \$50.00/division
Garden Peace — \$25.00
White Innocence — \$25.00
Early Windflower — \$25.00

Chris Laning
553 West F. Ave.
Kalamazoo, Michigan 49007

PEONY ROOTS

**FIRST-YEAR BLOOMING SIZE,
grown in Virginia**

**Minimum order — 4 roots, shipped Sept.
through November**

**PP Anywhere in Continental U.S.
— no sales to VA residence**

“KRINKLED WHITE,” white single	\$4
“MONS. JULES ELIE,” rose double	\$5
“PAUL M WILD,” red double	\$7
“KANSAS,” red double	\$7

**CASH/CHECK WITH ORDER, PLEASE
— NO PLASTIC!**

**GRANVILLE HALL
RT. 6, BOX 7365
GLOUCESTER, VA 23061**

PH 804/693-3919

OFFICIAL AMERICAN PEONY SOCIETY

Peony Handbook

Herbaceous Peonies

and

Tree Peony Culture

COVERING SUCH SUBJECTS AS:

- *Peony types*
- *Peony propagation*
- *Successful root dividing and grafting*
- *Proper planting*
- *How to fertilize*
- *Disease control*
- *How to raise exhibition blooms*

Price per copy \$5.00

American Peony Society, 250 Interlachen Road, Hopkins, MN 55343

"Schultz-Instant"
ULTRA PURE CONCENTRATED ALL PURPOSE
LIQUID PLANT FOOD

EASY DIRECTIONS
"7 drops per quart water
Every time you water,
Every thing you grow."

Good Housekeeping
★
POURABLE
EASY TO MIX IN WATER



"Schultz-Instant"
ULTRA PURE CONCENTRATED ALL PURPOSE SOLUBLE
Fertilizer

EASY DIRECTIONS
"1/4 teasp. per gal. water
Every time you water,
Every thing you grow."

Good Housekeeping
★
POURABLE
EASY TO MIX IN WATER



Available at leading Garden Centers and Plant Departments,
Garden Clubs. SEND FOR OUR FUND RAISING OFFER

Schultz Co., 140909 Riverport Drive, P.O. Box 173
Maryland Heights, MO 63040

Display Advertising Rates Schedule

Size of Ad	Single Insertion	4 Insertions
1/8 page	\$ 7.50	\$ 25.00
1/4 page	12.50	40.00
1/3 page	15.00	50.00
1/2 page	20.00	65.00
full page	30.00	100.00

THE SEVALD NURSERY



Minneapolis

PEONIES 1990

Send \$1.00 check or stamps for peony catalog.
MAIL ADDRESS:
SEVALD NURSERY
4937 3rd Avenue South
Minneapolis, MN 55409

The New Peony Farm

Quality herbaceous peonies
Our catalog is free on request

Box 6105

St. Paul, Minn. 55118



We now have an emblem of the American Peony Society embroidered in bright and beautiful colors. A shoulder patch, wear it on your jacket, cap, T-shirt or any garment. Price is \$2 each.

INTERESTED IN DAFFODILS? Join THE AMERICAN DAFFODIL SOCIETY, INC.

MEMBERSHIP BRINGS YOU...

Basic information on daffodil culture, types and classification, recommended varieties, show procedures and places to buy bulbs.

The Daffodil Journal, a quarterly of the Society, just full of information you should have.

The privilege of attending local, regional and national meetings.

And new friends all over the USA, all enthusiastic about Daffodils

Annual Membership—\$20.00

Don't delay. Send your check today to:
American Daffodil Society, Inc.

Executive Secretary—Mrs. Paul Gripshover
1686 Gray Fox Trails
Milford, Ohio 45150-1521



PEONIES

Over 100
to choose from.

*... a treasury of cold-hardy
hard-to-find perennials for
your pleasure.*

Busse Gardens

"The Minnesota Perennial People"

Rt. 2 - Box 238-P

Cokato, MN 55321

(612) 286-2654

Catalog \$2.00 - Deduct from first order

PEONIES, TREE PEONIES and DAFFODILS

Grown in Michigan's North Country.
Your assurance of quality, hardiness and vigor.
Send \$1.00 for our color catalog.

REATH'S NURSERY

100 Central Blvd., Vulcan, Michigan 49892

PEONIES — HEMEROCALLIS

Send \$2.00 for our 105th Anniversary Catalog—92 pages in color,
(1990) deductible from first catalog order.

GILBERT H. WILD & SON, INC.

Dept. APS—990

Sarcoxie, Missouri 64862-0338

CAPRICE FARM NURSERY offers hundreds
of varieties of **HEMEROCALLIS, PEONIES,**
HOSTA, IRIS ENSATA and **SIBIRICA** in a
brand-new 1990 Catalog—\$1.00 (refundable).



CAPRICE FARM NURSERY
15425 SW Pleasant Hill Rd.,
Sherwood, OR 97140

PEONY SPECIALISTS



Peony And Perennial Nursery

6808 180th S.E. Snohomish, Washington 98290
For current list, send \$1 refundable with first order
Acres of peonies and hostas Visitors welcome
(206) 668-9690

Second Edition

10-YEAR UPDATE

Registered Peonies
and Tree Peonies

PEONIES

1976 - 1986

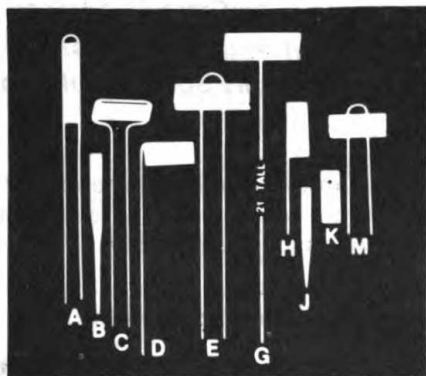
Compiled and edited by Greta M. Kessenich in cooperation with the nomenclature committee of the American Peony Society.

Serious peony growers now have access to another monumental work designed to identify historic peony varieties and their originations as well as exciting new varieties registered with the American Peony Society in the last decade. Handy new 6x9-inch spiral-bound book with full color front and back covers is printed on heavy stock for heavy field use. Nomenclature committee: Roy G. Klehm, Marvin C. Karrels and Don Hollingsworth, past presidents of the American Peony Society.

Postpaid \$10

American Peony Society, 250 Interlachen Road, Hopkins, MN 55343

The Permanent Metal Label



- A — Hairpin Style Markers 30 for \$ 9.30
- B — Plant or Shrub Labels 100 for \$ 6.75
- C — Cap Style Markers 30 for \$ 9.70
- D — Swinging Style Markers 30 for \$ 7.95
- E — Rose Markers 30 for \$ 8.85
- F — Tall Display Markers 30 for \$12.15
- G — Tall Single Staff Markers 30 for \$ 9.30
- H — Flag Style Markers 30 for \$ 7.20
- J — Small Plant Labels 100 for \$ 6.55
- K — Tie-On Labels 100 for \$ 9.65
- M — Miniature Markers 30 for \$ 7.45

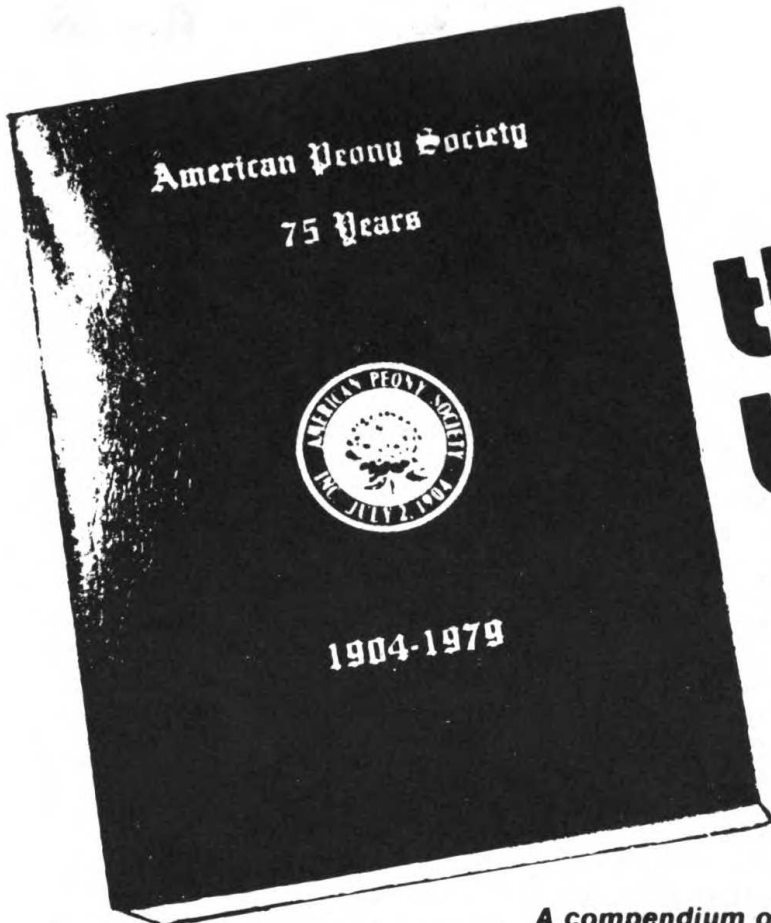
INTRODUCTORY OFFER
1 EACH: A, B, C, D, E, H, J, K with Crayon
ONLY \$3.25

Paw Paw Everlast Label Company

P.O. BOX 93-AP
PAW PAW, MICHIGAN 49079-0093

QUANTITY PRICES AVAILABLE

PRICES INCLUDE PREPAID POSTAGE



the best of 75 years

Compiled and edited by Greta M. Kessenich

A compendium of authoritative articles gleaned from 75 years of American Peony Society bulletins



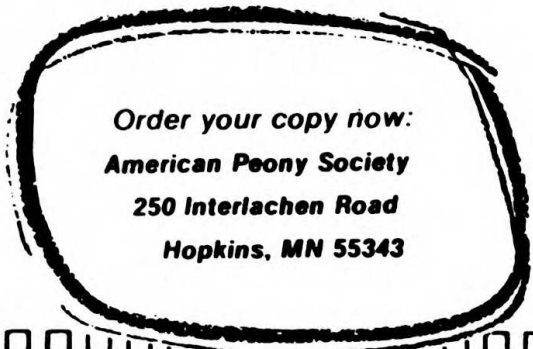
Those of you who pursue the study of the peony with diligence know that there are very few books on the market dealing with the peony in depth. The Best of 75 Years is destined to be a landmark edition for decades to come. It touches on subjects dealing with peony culture, history, exhibitions, peony ratings, nomenclature and new propagation techniques written by botanists, growers and hybridizers since the founding of the Society in 1904.

Bylines such as Saunders, Auten, Peyton, Wister, Gayle appear throughout supported by such contemporaries as Krekler, Wild, Hollingsworth, Lienau, Karrels and scores of others ... all ex-

cerpted intact from the American Peony Society's rare, near intact set of bulletins issued since 1904.

Every copy sold will be registered in your name as a charter subscriber.

Vinyl cover, 8½ x 11, 226 pages, price \$15



**Order your copy now:
American Peony Society
250 Interlachen Road
Hopkins, MN 55343**



FIRST EDITION

PEONIES

A HISTORY OF PEONIES AND THEIR ORIGINATIONS

Compiled and edited by Greta M. Kessenich in cooperation with the nomenclature committee of the American Peony Society

In Three Parts

1. VARIETY CHECKLIST

Based on a list compiled and edited by Mr. & Mrs. Byron Gist, completed in 1956, and kept on file at Kingwood Center, Mansfield, Ohio.

2. REGISTERED PEONIES

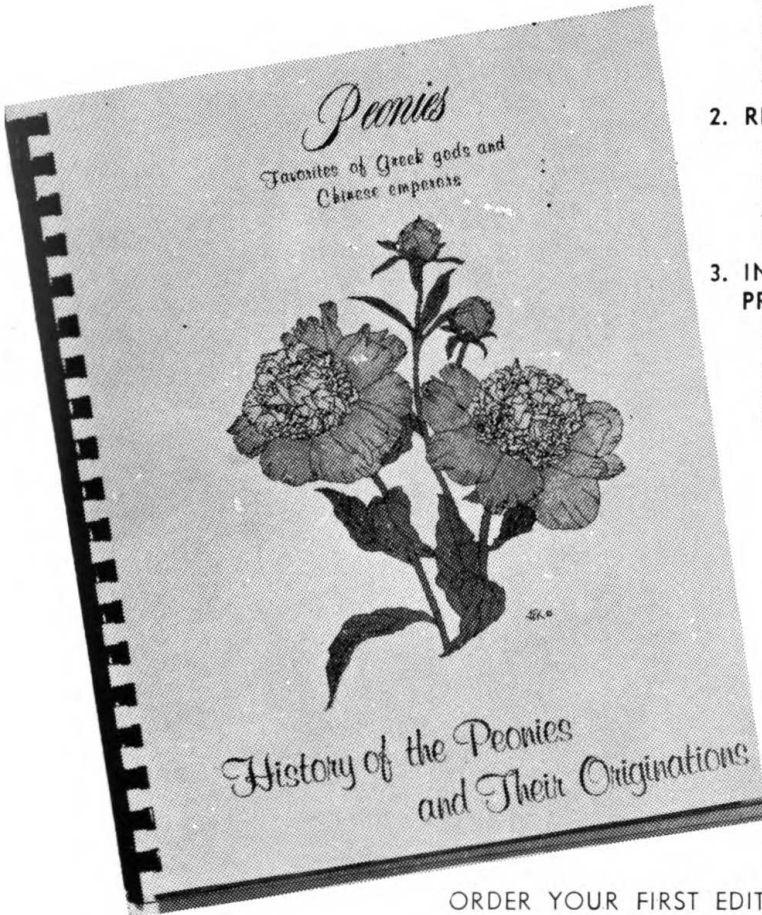
Compiled and edited by Greta M. Kessenich from bulletins of the American Peony Society. All varieties registered with the American Peony Society are listed.

3. INTRODUCERS OF PEONIES AND THEIR PRODUCTIONS

Peony varieties listed by growers and developers with emphasis on information provided by George W. Peyton during the years he was secretary and editor.

5,000 INDIVIDUAL ENTRIES

Peony growers who have had to rely on fragmented sources for tracking down peony varieties and their origins can now avail themselves of this magnificent work—a spiral bound, 9x12 inch book which lists and presents a capsule history of all varieties in commerce. It is the result of a monumental research, compilation and editing effort by Greta Kessenich and the nomenclature committee consisting of three American Peony Society past presidents: Roy G. Klehm, Marvin C. Karrels, and Clarence O. Lienau.



ORDER YOUR FIRST EDITION COPY NOW!

You'll enjoy this fine companion to your interest in peonies and will refer to it many times during the course of your peony gardening activity. It bears a beautiful color cover, contains 162 pages and is printed on fine stock. Cover and all artwork contained inside is the work of artist Joseph F. Kuczek. Price per copy \$10.00



American Peony Society
 250 Interlachen Road
 Hopkins, Minnesota 55343

Please send me copies of "The History of Peonies and Their Originations" at \$10.00 per copy for which I enclose \$.....

Name

Address

City State Zip



Generated on 2021-07-08 22:23 GMT / https://hdl.handle.net/2027/pst.000068507657 Creative Commons Attribution-NonCommercial-NoDerivatives / http://www.hathitrust.org/access_use#cc-by-nc-nd-4.0

Estate Peonies

From America's Foremost Peony Grower



'CHEDDAR SUPREME' (Roy Klehm)

PLANT PEONIES NOW

Send \$4.00 for your 1990 Full Color Catalog
(fully refundable with first order)

84 pages filled with Estate Peonies,
Hybrid Peonies, Choice Garden Peonies and
Rare Tree Peonies. Achillea,
Pulmonaria, Fancy Hosta, Siberian Iris,
Daylilies, Asarum, Ferns...many exclusives.

Call Toll Free

800-553-3715

Route 5, Box 197-4c Penny Road • S. Barrington, IL. 60010-9570



JA