



Suggested Use



Ryegrass



SCIENTIFIC NAME

Lolium multiflorum

FEATURES

- Diploid Italian ryegrass
- Rust resistant
- Selected from superior lines of Eclipse for herbage and disease resistance.
- Fine leaves that produces dense, high quality feed
- Bred in Australia for Australian conditions

MATURITY

- Mid season growth providing feed in late winter early spring
- Days to flowering relative to Nui (0) +6

AREA OF ADAPTATION

- Medium to high rainfall zones
- Ideal for grazing, silage or hay production

COMPARABLE TO

Crusader
Concord II
Tempo
Hulk
Knight
Arnie

SOIL TYPE

Eclipse *Select* is well adapted to a wide range of soil types and will perform best in paddocks with good fertility, soil testing is advisable. Analyse soil and neutralise deficiencies with fertiliser and/or lime.

FERTILITY

Good base rates of phosphorus are necessary for maximum DM production, especially during the establishment phase. DM production is also directly related to nitrogen availability. Consult your Landmark agronomist for fertiliser application rates.

SOWING

Sow at 20-25 kg/ha alone or 10-20 kg/ha when a component of a pasture blend. Sow seed no deeper than 1cm in a fine but firm seed bed. Sow into bared ground if direct drilling. Lightly harrow and roll to improve germination. Suitable for oversowing into an established stand. Pasture productivity is directly related to successful plant establishment.



Eclipse *Select*, Central Victoria

Figure 1: Relative DM yield trial at Yambuk, south west Victoria, 2008.

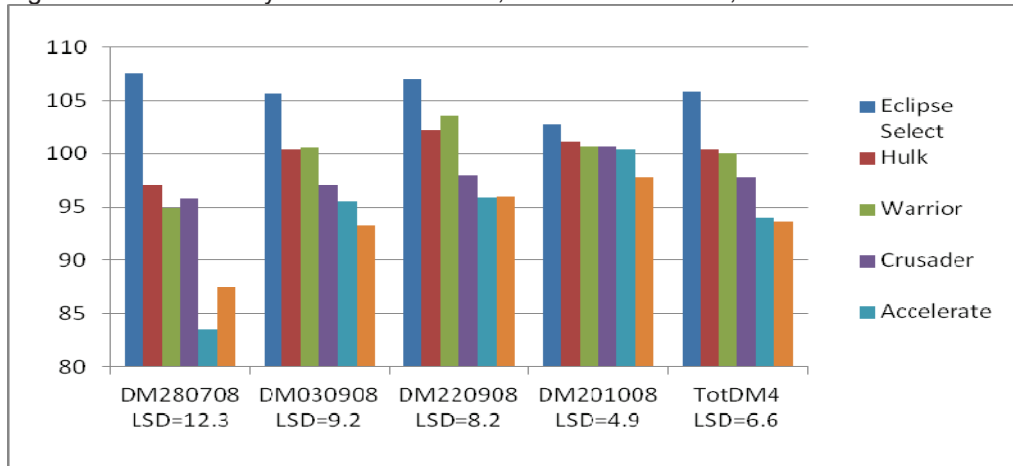


Figure 2: DM yield (kg/ha) trial at DPI Glen Innes, northern tablelands NSW, 2008.

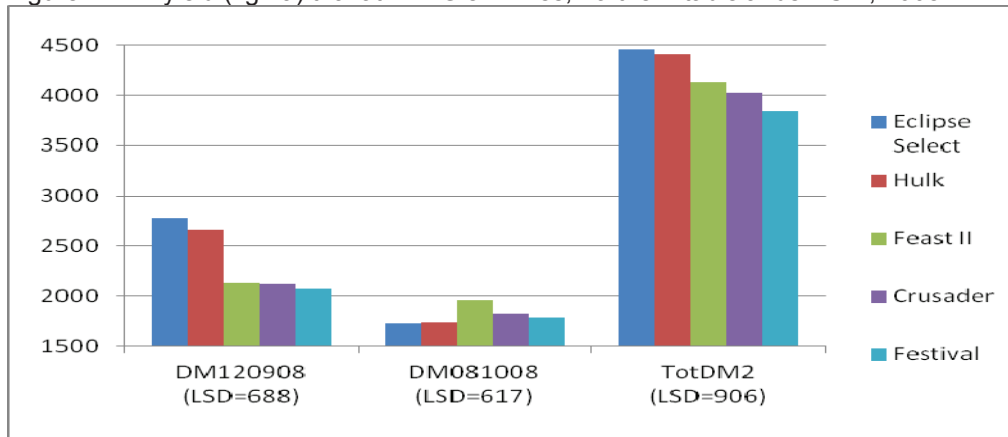
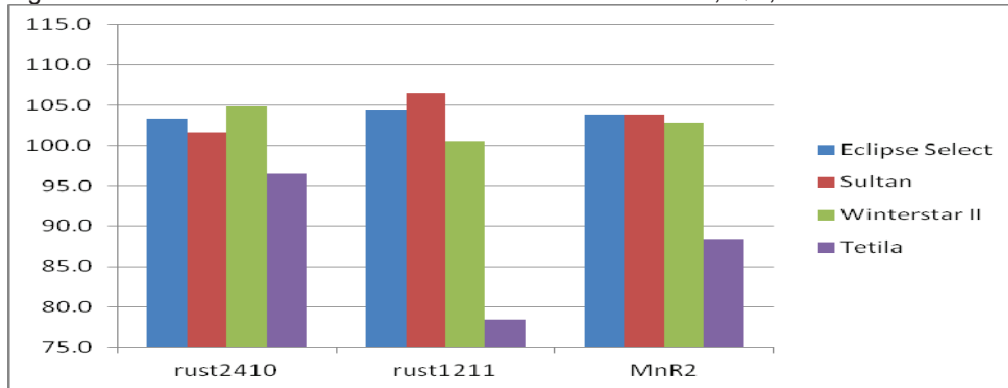


Figure 3: Relative rust resistance scores Rust trial DPI Gatton, Qld, 2008.



Contact your local Landmark representative today.

NAME _____

EMAIL _____

PHONE _____



Exclusively available from
LANDMARK

DISCLAIMER: The Fact Sheet is current as at 1/11/17. The material contained in this Fact Sheet is from official and other sources and is believed to be accurate. It is provided in good faith and every care has been taken to ensure its accuracy and reliability. Dyna-Gro Seed acknowledges that performance of grains may vary under different climatic conditions and other natural causes from season to season. Subject to terms and condition that cannot be excluded by law, Dyna-Gro Seed does not take any recommendations or suggestions made in this Fact Sheet.
Available from Landmark and marketed under the Dyna-Gro Seed brand. For more information on Dyna-Gro Seed contact your local Landmark Branch. Dyna-Gro® Seed and the Dyna-Gro® Seed device are registered trademarks of Landmark Operations Limited. If you do not wish to receive promotional material or mailings from us please contact us on (03) 9209 2000 or via our website