



File Date Corrector

© by Infonautics GmbH, Switzerland

File Date Corrector is a program for Windows™ and enables to correct the system-provided file dates "Created" and "Modified". The correction is made according to the meta information contained in the files, according to a specified date, or the date can be extracted from the filename. Before execution of the correction a preview is provided.

The correction of the file date is often needed when documents and images are copied to other computers or hard drives, thereby obtaining a new system-provided file date of the time of copying. For many applications it is important that the system displays the original creation and modification dates of the files.

Many file formats of documents, images and other media files contain so-called 'embedded meta-information', which also describe the original creation date and the last modification date of the file. File Date Corrector can extract the necessary information from these meta-data and correct the system-provided file date "Created" and "Modified", taking into account the correct time zone.

Alternatively, the program can also use a fixed date or extract the date from the filename using a flexibly determinable date and time format. Especially useful after transferring files from a smartphone or tablet is the possibility to transfer the date "Modified" to the date "Created", because the date "Modified" usually still corresponds to the original recording/creation date.

All possibilities can be applied at the same time and the corresponding priorities are arbitrarily adjustable. In addition, the directory date can be adjusted according to the contained files.

The freely available demo version displays the applicable changes in the preview window. For the effective application of the corrections, the full version is required. It can be activated by a license key which can be purchased for a small fee directly online (Shareware).

System Requirements

Microsoft Windows™ 7/8/10/11 (32 bit and 64 bit).
Program space on hard disk: about 15 MB.

Program Installation

Start the setup program and follow the instructions. Afterwards an entry in the start menu and a program shortcut on the desktop is available to start the program.

Both the setup program and the program itself are digitally signed. Before starting please check the **validity of the Digital Signature** of the executable EXE-files (context menu: Properties: Digital Signatures: open Infonautics GmbH). If the signature is invalid or missing then the program has been altered by third parties and may thereby cause harm. In this case please refer to the software manufacturer for the original software (see contact below).

Full Version / License Key

For the effective application of the corrections, the full version is required. It can be activated by entering a license key, which can be purchased online for a small fee at the following address:

<http://www.infonautics-software.ch/filedatecorrector/buy/>

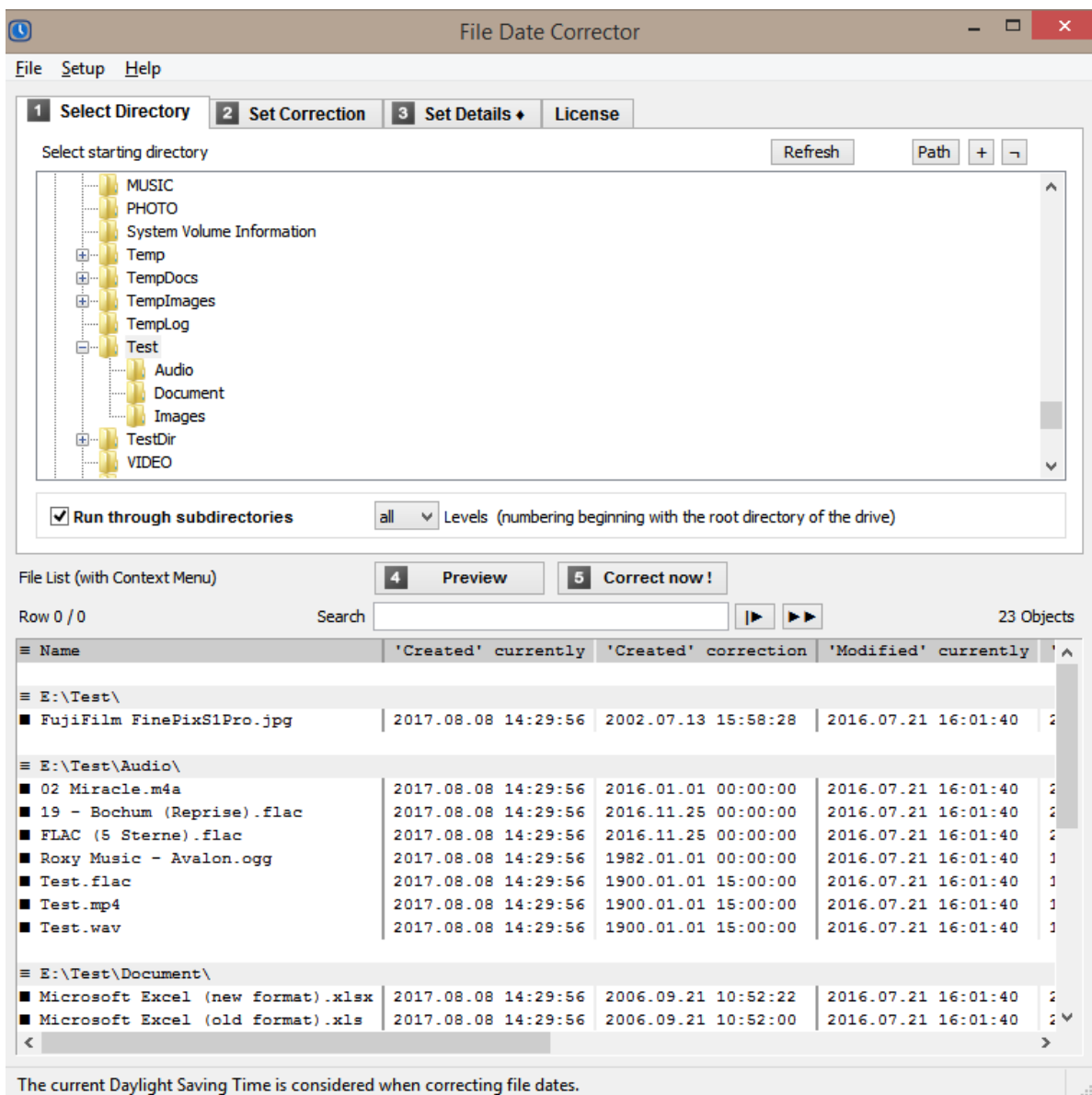
The license is valid for an unlimited time and all future updates.

User Interface

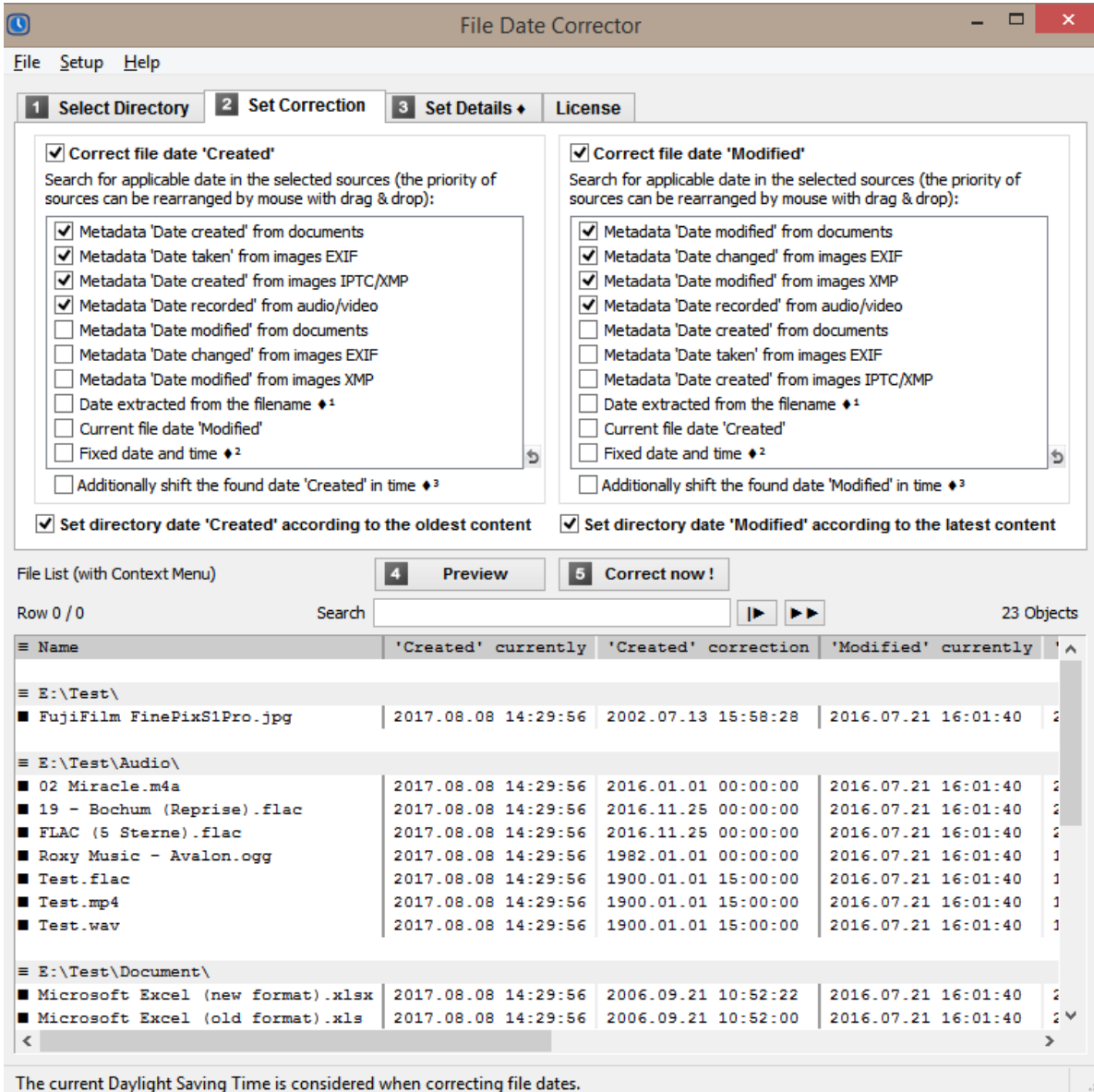
The program supports the correction of file dates in a few easy steps:

1. **Select Directory**, to define the starting point of the file date corrections.
2. **Set Correction**, to define the nature of the correction.
3. **Set Details**, to determine specific date and time values.
4. **Preview**, to verify the intended corrections.
5. **Correct**, to definitely apply the file date corrections.

1. Select Directory:

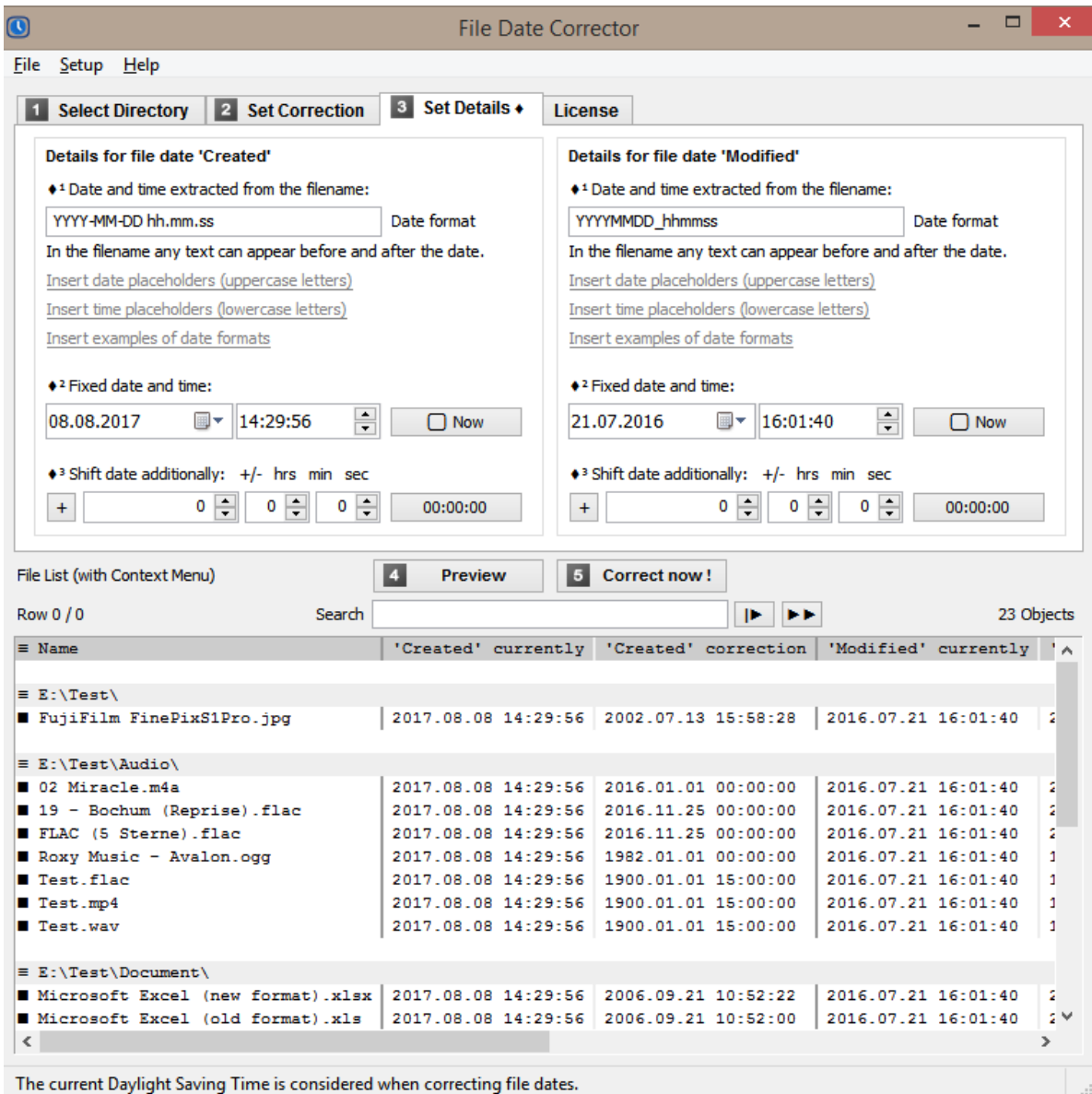


2. Set Correction:



Select the dates to be corrected: "Created" and/or "Modified".
 Selection and prioritization of sources for date adjustments.
 Selection of an additional temporal shift of the found dates.
 Adaption of the directory date to the oldest / latest content.

3. Set Details



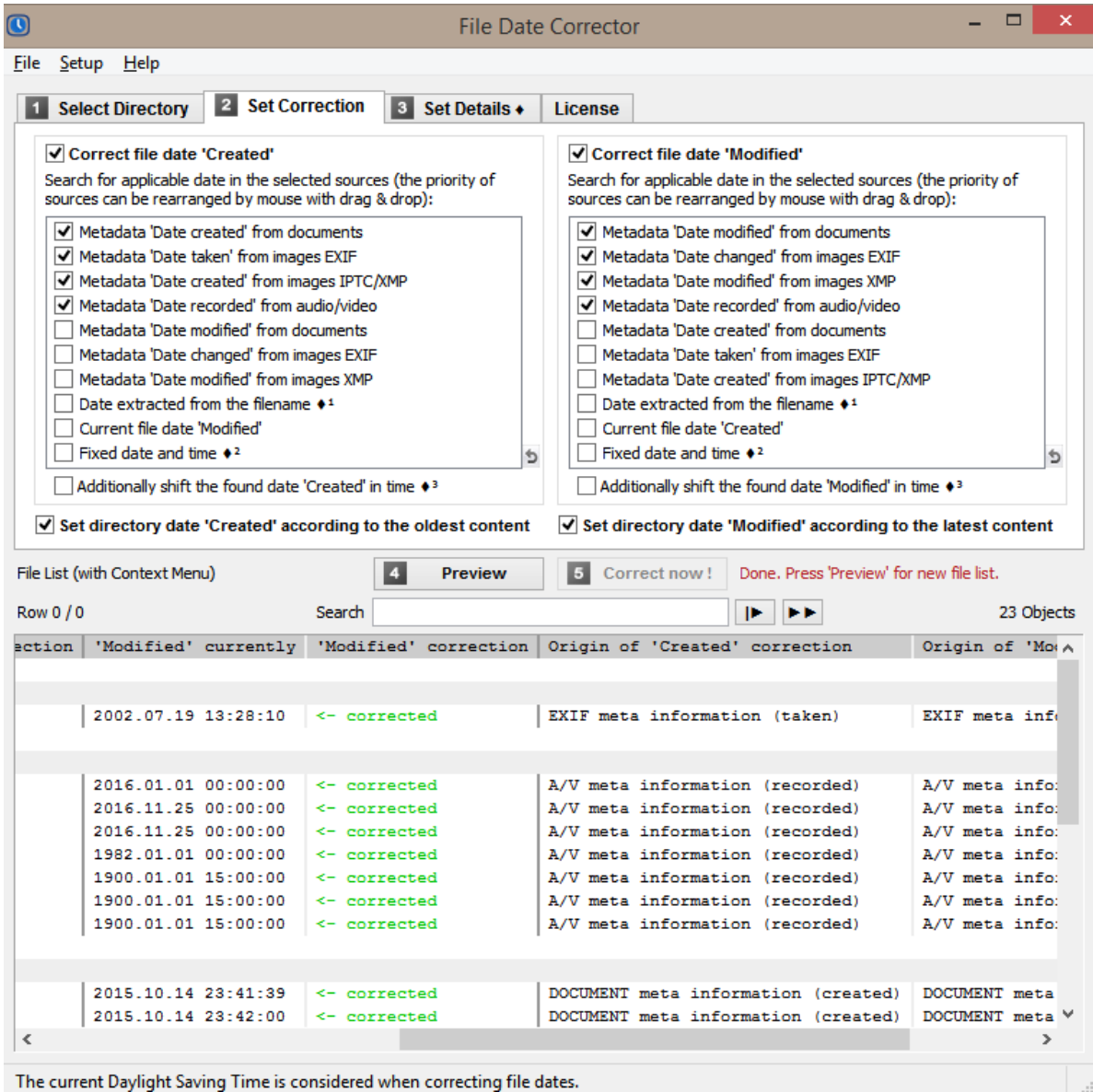
Determine the date format for extracting a date from the filename.
 Set the date and time to apply a fixed date.
 Determine an additional time shift to be applied to the found dates.

4. Preview

The file list shows in the column "'Created' currently" the current creation date of the file and in the column "'Created' correction" the proposed corrections. The column "Origin of 'Created'" also shows where the correction date comes from, since several sources can be selected at the same time.

(Same for "'Modified' currently", "'Modified' correction" and "Origin of 'Modified'".)

5. Correct now:



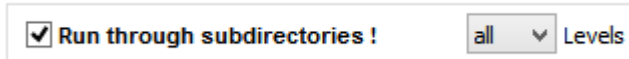
The file dates will be effectively corrected according to the columns "'Created' Correction" and "'Modified' Correction". Likewise, the directory date will be adjusted if the appropriate option is selected. After the correction, the corrections of the file dates are documented in the file list.

[Network Attached Storage NAS with Linux Operating System: Some file servers running Linux do not know the 'Created' file date of Windows, but only the 'Modified' file date. In these cases, the 'Created' file date is always the 'Modified' date, and therefore only the 'Modified' date can be corrected. This is especially true for somewhat older NAS systems whose storage is formatted with the file systems EXT2 or EXT3.]

Features

Directory selection [1. Select Directory]

- Selection of starting directory for the corrections by a tree structure.
- Selection of starting directory by entering the path as a text string.
- Optional processing of subdirectories (Run through subdirectories).
- Set directory recursion depth for subdirectories.



- Support for connecting and disconnecting network drives.
- Updating the directory view.

Correction properties [2. Set Correction, 3. Set Details]

- Selection of dates to be corrected: "Created" and/or "Modified".
- Selection of information sources, separately for dates "Created" and "Modified": meta information of files, documents, images (EXIF, IPTC, XMP), meta information of audio/video (only the date "Recorded" is available because audio and video have no modification date), extraction of the file date from the filename, fixed date and time.
- Possibility to search at all sources at the same time and to set their priority.
- If there is no meta data available for "Created" or not selected, then the meta data of "Modified" can be used to correct the file date "Created".
- If there is no meta data available for "Modified" or not selected, then the meta data of "Created" can be used to correct the file date "Modified".
- If there is no information available or selected for the file date "Created", then the last modification date can be used to correct the file date "Created". (In many cases, the original file modification date is taken over when Windows copies the files.)
- If there is no information available or selected for file date "Modified", then the current creation date can be used to correct the file date "Modified". (This can resolve the confusing situation if the last modified date is older than the current file creation date.)
- Apply additional time offset for the found dates.
- Adjusting of the directory date according to the oldest / youngest content, i.e. the creation date is set according to the oldest file date "Created" found in the child directory structure, the modification date is set according to the latest found file date "Changed" or "Created".
- Dealing with date settings back to the year 1601 (with NTFS file system, the FAT file system and the Windows-Explorer only support dates back to the year 1980).

Preview generation [4. Preview]

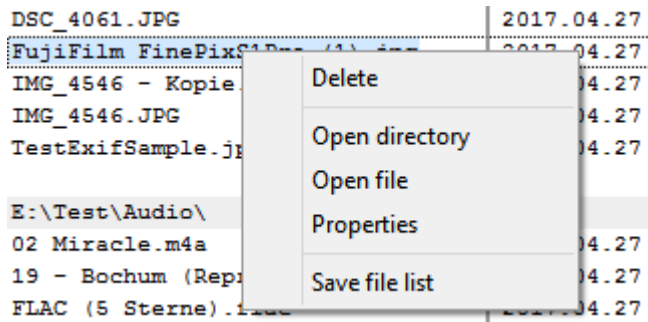
- Process files and list fixes found, with date "before correction" and date "after correction", separately for date "created" and/or date "modified".
- Show the number of found objects (files).
- Sort files/directories by name in NATURAL order (like Windows Explorer).

Apply correction [5. Correct now!]

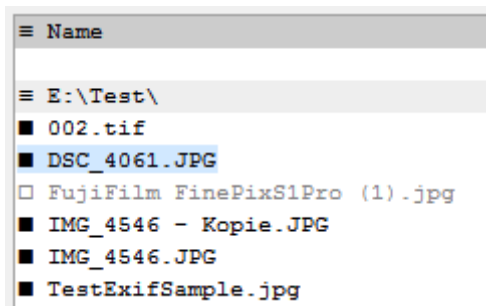
- Effectively apply the proposed date corrections.
- Automatic consideration of daylight saving time.
- The correction status is displayed after the correction:
 - corrected (correction was successful),
 - read only (no correction applied),
 - failed (correction was not successful).
- The button "5. Correct now" is available only if a "Preview" has been created first.
- For the application of the date corrections the full version of the program is needed.

Functions built-in the file list [Search, Context Menu, File Selection]

- Search: Find a string in the file list using the following search modes:
 - ▶ "Search from the beginning" and ▶▶ "Continue searching from the current row".
- Context menu: Delete selected row, open the directory containing the selected object, open/start the selected object, show properties of the selected file or directory.



- Context menu: Save current file list as PDF print file, EXCEL spreadsheet file, TEXT file with tab or semicolon as field separator.
- Select / unselect files in the list for the correction (click on the following icons):



- ≡ Select / unselect all files in the list
- ≡ Select / unselect all files in this directory
- Unselect a single selected file
- Select a single unselected file

Program settings [Menu: Setup]

- Automatic saving of settings when exiting the program.
- Automatic set up of a program shortcut on the desktop.
- Support for connecting and disconnecting network drives.
- Creation of a log file for the actually applied corrections.

Program update [Menu: Help / Check for program update]

- Automatic updating of the program to the latest version (the connection to the Internet is established only when selecting the menu item).

Supported file formats for meta information

(preliminary information which may change at any time)

Document files, which may include meta information:

- *pdf, doc, docx, docm, docb, dotx, dotm, xls, xlsx, xlsx, xlsb, xltx, xltm, ppt, pptx, pptm, potx, potm, odt, ods, odp, odg, odc, odf, odi, odm, eml, msg (Outlook)*

Image files, which may include EXIF and IPTC meta information:

- *360, 3fr, 3g2, 3g2p, 3gp, 3gpp, arq, arw, avif, bpg, btf, bmp, cr2, cr3, crw, ciff, cs1, dcr, dib, dng, eps, epsf, ps, erf, exif, exv, fff, flif, gif, gpr, hdp, heic, heif, hif, ico, iiq, insp, j2c, j2k, jpc, jp2, jpf, jpm, jpx, jpeg, jpg, jpe, jxl, k25, kdc, mef, mie, miff, mif, mos, mpo, mrw, nef, nrw, orf, ori, pef, pict, pct, png, psd, raf, raw, rw2, rwl, sr2, srf, srw, thm tiff, tif, webp, x3f, xcf, xmp (Sidecar files)*

Audio files, which may include meta information:

- *ogg, ogm, mp2, mp3, wma, ra, ape, mac, flac, ac3, aac, dts, m4a, m4b, cda, wav*

Video files, which may include meta information:

- *avi, mpeg, mpg, vob, mp4, mpgv, mpv, m1v, m2v, m4v, asf, wmv, qt, mov, rm, rmvb, ifo, wtv, dvr-ms, mkv, mka, mks, divx, xvid, m2ts, m2t, mts, ts, flv, 3gp, mxf, swf, hevc*

Contact

Infonautics GmbH
Eichholzweg 16
CH-6312 Steinhausen
Switzerland

Internet: <http://www.infonautics-software.ch/filedatecorrector>
E-Mail: support@infonautics.ch

This software uses MediaInfo library copyrighted by MediaArea.net SARL.

This software uses free ExifTool Perl library developed by Phil Harvey.