

Forgotten Books

www.forgottenbooks.com

Copyright © 2016 FB &c Ltd.

All rights reserved. No part of this publication may be reproduced, distributed, or transmitted in any form or by any means, including photocopying, recording, or other electronic or mechanical methods, without the prior written permission of the publisher, except in the case of brief quotations embodied in critical reviews and certain other noncommercial uses permitted by copyright law.

Historic, Archive Document

Do not assume content reflects current scientific knowledge, policies, or practices.

PRICES

**and List of Varieties and
Each Wanted, For Special Quo.**

Season 1928
Peonies and Irises

A Descriptive Price List of
Choice and Rare Varieties



MME. JULES DESSERT

BUECHLY'S NURSERIES

E. M. BUECHLY, Proprietor
GREENDVILLE, OHIO

Telephone A-2027

MEMBER AMERICAN PEONY ASSOCIATION
MEMBER COMMERCIAL PEONY AND IRIS ASSOCIATION

Introduction

We have now been fifty years in this nursery business, and thought it would be appropriate to add a little embellishment to the appearance of our 1928 catalog on this, our **Golden Anniversary** number; in fact, make it nice enough that our friends may file it away for a Souvenir when it has filled its purpose as a little modest salesman, who presents **Plain Facts** without the knack of **High-Pressure** salesmanship, for the writer freely admits that he is not blessed with any surplus of volubility in presenting his business. However, our long experience enables us so to handle and pack our plants and bulbs that they reach our patrons in the best possible condition.

In the last decade of the last century we named and introduced the famous Eldorado blackberry, which at the end of over thirty years is still in the front rank as the most popular berry for the northern and central United States. About 1910 we began growing gladioli, and followed with peonies and irises a few years later, and we now specialize in these last three items, and grow evergreens, ornamental shrubbery, perennials, etc., in a more limited way.

In the following list in which we briefly describe and price the varieties offered we do not wish to make extravagant claims to have better stock than any one else, but having the right soil and climate, and giving proper care and cultivation we get results that are at least as good as the best. It will be seen that our peonies mostly grade 8 and above, or 80 per cent of a perfect flower. The grading as given in the figures following the names of the peonies and irises is the result of the reports from a large number of the growers who are members of the **Peony and Iris Associations** respectively, being averaged. This is a great help in making selections, where one wishes to secure high quality. It will be seen that it is not the highest priced varieties that grade the highest, but it is absolute quality that counts. We have abundant faith in the intelligence of our patrons, and therefore do not make up selections for them unless asked to do so, in

which case our services and experience are at your command.

Size of Plants: At prices quoted are for good strong standard divisions, 3 to 5 eyes, in most cases from dividing 2 to 3 year old plants. In some cases we use one year old plants without dividing. We do not recommend so called one eye divisions, but to meet a demand for such, we will supply of any peonies selling for \$3.00 or more. **Good 2 eye divisions for 3-5 the list price for the regular size.** Our object is to give good value for the money. Not how little, but how much can we afford to give for the price paid, and the repeat orders sent in go to show that our efforts are appreciated. Orders should be sent as early as possible as stock of rarest varieties is limited, and shipments are made in the order received. Please advise whether shipment is to be by express or parcel post.

If our plants please you tell your friends, if not, kindly advise us.

Visitors

We are always glad to welcome visitors to our grounds who may be interested in hardy plants, for one can always select to much better satisfaction in the field from seeing the flowers than from any descriptive catalog, be it ever so elaborate.

Terms

The prices given in this list are net cash, unless otherwise arranged, and supercede all former lists. All retail orders will be delivered free by parcel post or express, anywhere in the United States.

Cultural Directions

Peonies and Irises thrive in most any soil that is not too wet. Should it be inclined to be acid, a light dressing of lime will be beneficial. Never permit fresh manure to come in contact with the roots. Bone-meal is a safe proposition, and well decomposed barnyard manure may be worked around the plants, but not over the crown of the plants. Peonies should be planted at least 3 feet apart, and for field culture rows should be 4 feet apart. The plants should be set so the top buds are 2 to 3 inches below the sur-

face of the soil. Deeper planting may cause shy blooming. September and October are the best months to set peonies, but they may be set any time before the ground freezes. The plants start growth too early to handle well in the spring; we therefore never advise spring setting.

Irises should be planted rather shallow, just covering the rhizome, and both peonies and irises are better planted in full sunlight, away from trees and shrubs and not too close to the walls of a building, although they may endure partial shade. Give good, clean shallow cultivation and you will be rewarded with fine bloom.

This descriptive list with prices should be filed for reference another season, when we may issue a new price-list without the descriptive matter.

Any disinterested party receiving this catalog, by kindly handing it to some friend who may be interested, will confer a double favor.

The following list of our peonies includes double, single and Japanese varieties all in alphabetical order. We could offer a much longer list, but have discarded nearly all that do not grade over 7.5 in a possible 10, or 75 per cent of the perfect flower as rated.

We are pleased to note that our line of business has been increasing year by year, and we surely appreciate the patronage which has enabled us to do this, and hereby tender our sincere thanks for same, and trust that the benefit has been mutual, and that we may have the pleasure of continued patronage, and to those who have not yet given our stock a trial we solicit a trial of our superior well grown and carefully packed goods and for which we thank them in advance.

Guarantee

We guarantee safe arrival of plants, and that they are healthy and true to name, and hold ourselves ready to replace two for one any that prove otherwise.

PRIZE WINNING PEONIES

In a class of 68 entries, our 6 **Milton Hill** won 2nd place at the Ft. Wayne show and we also took 2nd place in a class of 24 entries for best 10 varieties double blooms of each. Also two first and two second prizes at Peoria, Ill., 1927.



“Ambassadeur”

PEONIES

The following abbreviations are used in the following lists: Brand (B.), Crousse (Cr.), Lemoine (Lem.), Kelway (Kel.), Hollis (Hol.), Richardson (R.), Guerin (G.), Goos & Koene-man (G. & K.), Calot (Ca.), Pleas (P.), Donka-lier (Don.), Rosefield (Ros.), Gombault (Gom.), Verdier (Ver.), Vilmorin (Vil.), Sturtevant (Sturt.), Millet (Mil.), Early (E.), Midseason (M.), Late (L.).

Adolph Rousseau , 8.5, (Des. & Mechin '90) very tall, strong grower, rather loose, double or sometimes semi-double flowers of deep garnet, conspicuous and fine, M.	\$ 1.50
Albert Crousse , 8.6 (Cr. 1893) bomb type, late, extra good	1.00
Alice Harding , (Lem.), tall vigorous stems, very large flower of the most perfect shape, broad petals of best substance, cream white	100.00
Alsace Lorraine , 8.8 (Lem. 1906) pointed, white petals lit up with a golden light in center make this a charming flower, tall and vigorous, late	2.50
Ama no Soda , (Jap.), pink with yellow center	15.00
Archie Brand , 7.5 (B. 1913) prize winner, bomb, pink, fragrant	1.00



ALSACE LORRAINE

Asa Gray , 8.1, (Cr.) pale lilac, large, well formed, mid-season	1.50
Augustin d'Hour , 7.8, (Ca. 1867) large, free bloomer, good red	1.00
Avalanche , 8.7, (Cr. 1886) an extra good white, high center	1.00
Baroness Schroeder , 9.0 (Kel.) one of the very best and most useful white varieties, large globular blooms, white guard petals with a delicate blush center fading to pure white, stems strong, foliage light green. L. M.	1.50
Berlioz , 7, (Cr. 1886) good, large, solferino red, white tip	1.00
Bishop Burke , (Vories 1925) crimson with a silvery sheen good form on long stiff stems and a free bloomer. Plant has excellent habits. Midseason	35.00
Blanche King , (B. 1923) one of the new ones, a fine pink with extra large broad petals, distinct, midseason	50.00
Cherry Hill , 8.7, (Thur.) deep garnet, long stem	4.00
Chestine Gowdy , 8.4 (Brand 1913) shell-pink and cream, a dainty high built flower, L. M.	2.00
Claire Dubois , 8.7 (Cr. 1886) rose type, late pink, extra	1.00
Clemenceau , (Des.), a late variety with flowers of very deep rose or carmine color with silver edged petals	6.00
Cornelia Shaylor , 9.1, (Shay.) light pink, very good	15.00
Couronne D'Or , 8.1 (Ca. 1873) semi-rose, symmetrical, late, white75
David Harrum , 8.4, (B.), bright red	7.00
Desire , 8.5 (Br.) delicate mauve	10.00
Dorchester , 7.7 (R. 1870) perfect rose type, latest pink, extra75
Dr. Boisduval , 7.6 (Gr. 1850) a fine brilliant red with gold stamens	1.00
Duchess de Nemours , 8.1 (Ca. 1856) crown type, early, white, no red marks, sulphur center50

Edulis Superba , 7.6, (Lem. 1854) very early, free, pink, fragrant50
E. B. Browning , 9.2 (Brand 1907) delicate pink bud that opens into a very fine white bloom of large size, late	5.00
Edwin C. Shaw , (ThurLOW), clear shell pink, broad rounded petals sometimes edged crimson; cupshaped bloom of elegant form. In a class with President Wilson	20.00
Elwood Pleas , 8.7 (Pleas 1900) large flat rose type flowers of delicate pink color, M.	2.50
Enchantresse , 8.9 (Lem. 1903) rose type large globular, creamy white flowers, strong grower, very late	5.00
Etta , 8.0, (Terry) very large, flat rose type of deep shell pink color, one of Terry's best, and one of the very late ones, vigorous	1.50
Eugene Verdier , 8.3, (Ca. 1864) dwarf, grown with extra stiff stems, deep shell pink with creamy shades, late	1.50
Eugenie Verdier , 8.6, (Cal.), hydrangea pink	2.00
Exquisite , 8.5, (Kel.) rosy pink, a beauty	3.00
Felix Crousse , 8.4, (Cr. 1881), one of the best reds, brilliant75
Festiva Maxima , 9.3, (Miellez 1881), the standard early white, rose type, perfect form and color, extra75
Floral Treasure , 7.5, (Ros. 1900) free bloomer, delicate pink75
Florence McBeth , 9.2, (Sass.) a good new one. First class certificate, A. P. S. Color is a beautiful blush pink	22.50
Florence Nightingale , 9.1, (Brand), a very late pure white with rarely a small fleck of crimson	1.00
Frances Willard , 9.1 (B. 1907). This is considered one of Brand's best of his earlier introductions, color creamy white, large size, late mid-season	3.00
Frankie Curtis , (Vories 1924) very similar to the famous M. Jules Elie in form, but color is white	50.00

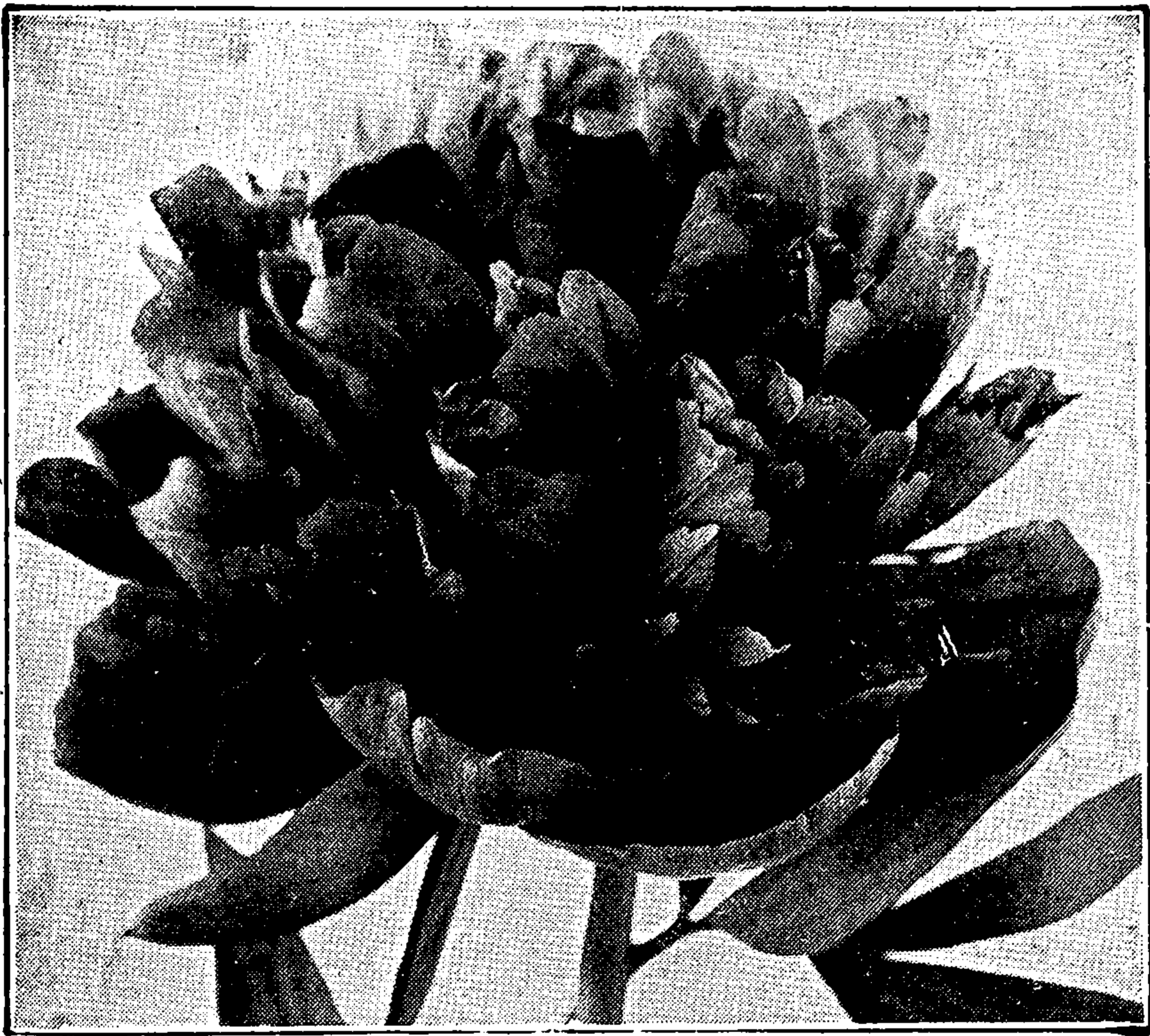


FRANCES WILLARD

Fuyajo , (Jap), guard petals very deep red with dark crimson petaloids in center tipped cream; very distinct	7.50
Galathee , 8.1. (Lem. 1900), a fine, pearly-white, full double yet opens well, long stem and very late, pronounced extra by leading growers	3.50
Georgiana Shaylor , 8.9, (Shaylor 1908) a pale rose-pink, large and somewhat flat, vigorous grower, very high class, mid-season	5.00
Germaine Bigot , 8.5, (Des. 1902) large pale lilac rose, splashed crimson	1.50
Ginette , 8.6, (Des. 1915) large, deep flesh color, fragrant, on established plants the flowers are extra fine	2.50
Governor Morton , (Teas') new, red, fine form, vigorous, good keeper	3.00
Grace Loomis , 9.2, (Saunders 1920), clear white, full double flowers, tall strong stems, very fine, late	20.00
Grandiflora , 8.8, (Rich.) very large flat flowers silvery shell-pink, petals pointed with a fine effect, very late	1.50
Grover Cleveland , 8.2, (Terry) dark crimson blooms on upright stems of medium height, fine garden variety, late	1.50
Harriett Farnsley , 7.9, (B. 1916) delicate pink, midseason	1.00

Helen , (Thur.) single pink of best quality new	10.00
Helen Wolaver , (B.), shell pink, splashed darker	2.00
Henry Avery , 8.5 (Brand), light pink, me- dium height, midseason, with large blooms that are quite fragrant	4.50
Henri Murger , 7.4, (Cr. 1895) rose-type, deep pink, good, late	1.50
Inspector Lavergne , (Dor.) fine new red....	15.00
Isani Gidui , (Jap), one of the leading white Japanese varieties	12.00
James Kelway , 8.7, (Kel.) white with a glow of blush of pink or gold, broad petals, very tall and strong, fragrant, midseason	1.50
James R. Mann , 8.7, large, deep rose pink, one or two crimson streaks in center of flower, central petals in-curved, grace- ful M.	15.00
Jeannot , 9.2, (Des. 1918) cup-shaped bloom of soft shell-pink slightly tinted lavender, very promising variety	10.00
John M. Good , a new white that comes highly recommended	40.00
Jubilee , 8.9, (Pleas 1908), very large flat flowers of ivory white, narrow petals loosely arranged giving a feathery effect. A fine show flower which we have grown to ten inches in diameter. Stems rather weak, midseason	2.50
Judge Berry , 8.6 (B. 1907) very large flat blooms of soft pink, very early	5.00
Karl Rosefield , 8.8, (Ros. 1908) rich silky dark crimson, full rose type; one of the best reds, mid-season	1.50
Kelway's Glorious , 9.8 (Kel. 1909) pink- tinted buds opening into large irrides- cent white, fragrant, late midseason, one of the most sought after peonies	15.00
Kelway's Queen , 8.8 (Kel.), globular blooms good form and habit, deep flesh pink with slight carmine markings in center, fine form and good size, scarce, mid-season	15.00

King of England, 8.6, (Jap.) won 1st prize as best Jap. specimen bloom at Peoria 1927	5.00
Lady Alexandra Duff, 9.1, (Kel. '09), broad petals of soft French pink, of medium height upright stems, the true variety, a strong grower, and one of the finest of Kelway's introductions, mid- season	3.00
Lady Beresford, 8.2, (Kel. 1895) a fine ac- quisition	2.00



KARL ROSEFIELD

Lady Kate, (Vor.) large, rose type, perfect form, solid, light pink. Very beautiful tall and late	35.00
La Fee, 9.2, (Lem.), rose type color rose- pink.	10.00
La Fiancee, 8.6, (Dessert '02) one of the very best single white varieties, beauti- ful as a water lily, five to six inches in diameter, mid-season	1.50
La France, 9.0, (Lem. 1901) large flat blooms on strong stems, soft rose-pink late	5.00
Lamartine, 8.4, (Lem. 1908), rose type, the rose colored petals tipped white, strong stems, quite scare	5.00
La Perle, 8.5 (Cr. 1885) blush-white in center with deeper edging, fragrant, late	1.50
La Rosiere, 8.3, (Lem.) large, semi-double, cream-white, beautiful	1.00



THIS PAGE IS LOCKED TO FREE MEMBERS

Purchase full membership to immediately unlock this page

HISTORY

Tens of thousands of important historical sources, many previously unobtainable, are now available for the first time with a Forgotten Books Full Membership.

Unlimited Access
\$8.99/month

Continue

*Fair usage policy applies



Martha Bulloch , 9.1, (B. 1907) one of the largest and best of Mr. Brand's early productions, blooms up to ten inches have been grown here, a soft rose-pink color with good substance	7.50
Mary Baker Eddy , 7.9, (Hollis 1910) said to be one of Hollis' best, deep pink	2.50
Mary Brand , 8.7 (Br.), deep red.....	2.50
Mary P. King , 8.7, (Franklin), one of the new ones from the northwest, highly recommended	7.00
Mary Woodbury Shaylor , 9.0, (Shaylor 1916) clear pink with cream colored center, rose type, a cup shaped flower of great beauty, one of Shaylor's best, mid-season	8.50
Mathilde de Roseneck , 7.9, (Cr. 1883) late, fine every way	1.00
Midsummer Night's Dream , 8.2 (P.) ivory white, rare and beautiful	2.00
Mignon , 8.7, (Lem. 1908) very large globular rose type, extra fragrant, fine, mid-season	4.00
Milton Hill , 9.0, (Rich.) "One of the best peonies in existence" were the words expressed by our lamented friend Mr. Farr when describing this variety, and we fully agree with him. One of the varieties to grow to ten inches in diameter with us and yet without any coarseness	4.50
Minamota , (Jap.) purplish red, fine	5.00
Miss Salway , 7.8, (Kel.), white	5.00
Mikado , 8.6, (Jap) red and gold, attracts universal attention, large size, tall erect stems, good grower, midseason, splendid variety	2.50
Madame DeVerneville , 7.9, (Cr. '85) a well formed charming flower, bomb type, early75
Madame Emile Dupraz , 8.4, (Riv.), Carmine pink color a very fine flower when well grown, somewhat resembling the famous Milton Hill	4.00
Madame Emile Galle , 8.5, (Cr. 1881) delicate pink, fine form, very beautiful, late mid-season	1.00

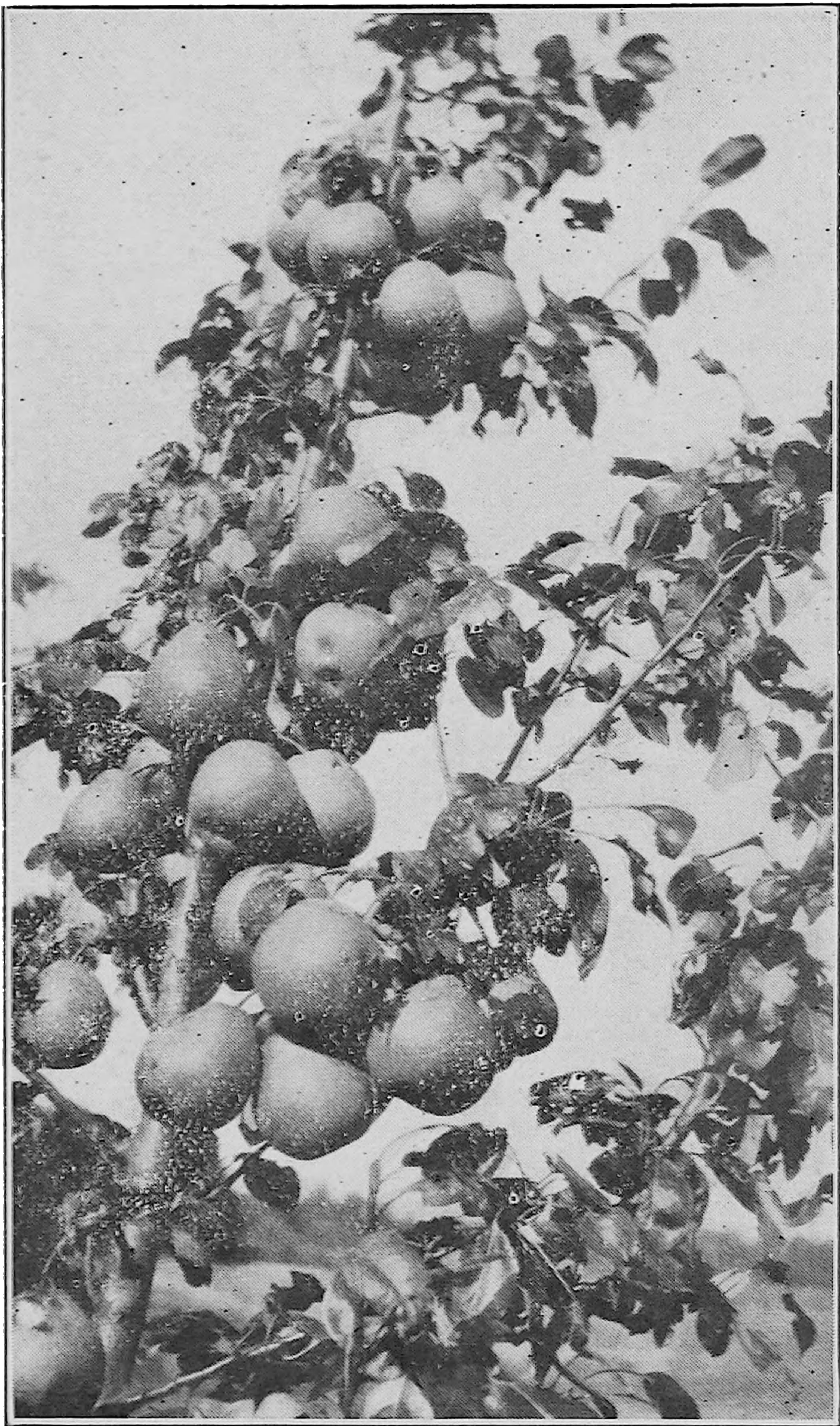
72,67

1928

MAXINE

A Blight Resisting Pear

While traveling in Preble County, Ohio, about 20 years ago, my attention was called to a pear tree supposed to be a seedling that was then probably 60 or 75 years old, and was yet vigorous, healthy and productive, and some top-grafted



trees of this original one, in the same neighborhood at the age of at least 20 years, were also free of any fireblight, that induced me as a nurseryman to propagate the same and I named it Maxine. I now have a dozen trees of it in orchard fruiting; one of them standing within fifteen feet of a Beurre Bosc pear tree that blights badly each year, and yet

this tree nor any of my other Maxine's has ever shown a twig of fireblight.

Maxine is on trial at a number of experiment Stations. It is similar in form and color to Bartlet, with a vinous sub-acid flavor, that some pronounce equal to Bartlet, no grit or hard core, very productive annual bearer, as shown by the cut which shows a branch from a tree that bore three successive crops that broke some of the limbs. Highly recommended for canning. Repeat orders from our customers prove this.

A blight resistant pear has long been wanted and we have it in this one, whether it will prove to be entirely immune remains for scientists to determine by inoculation.

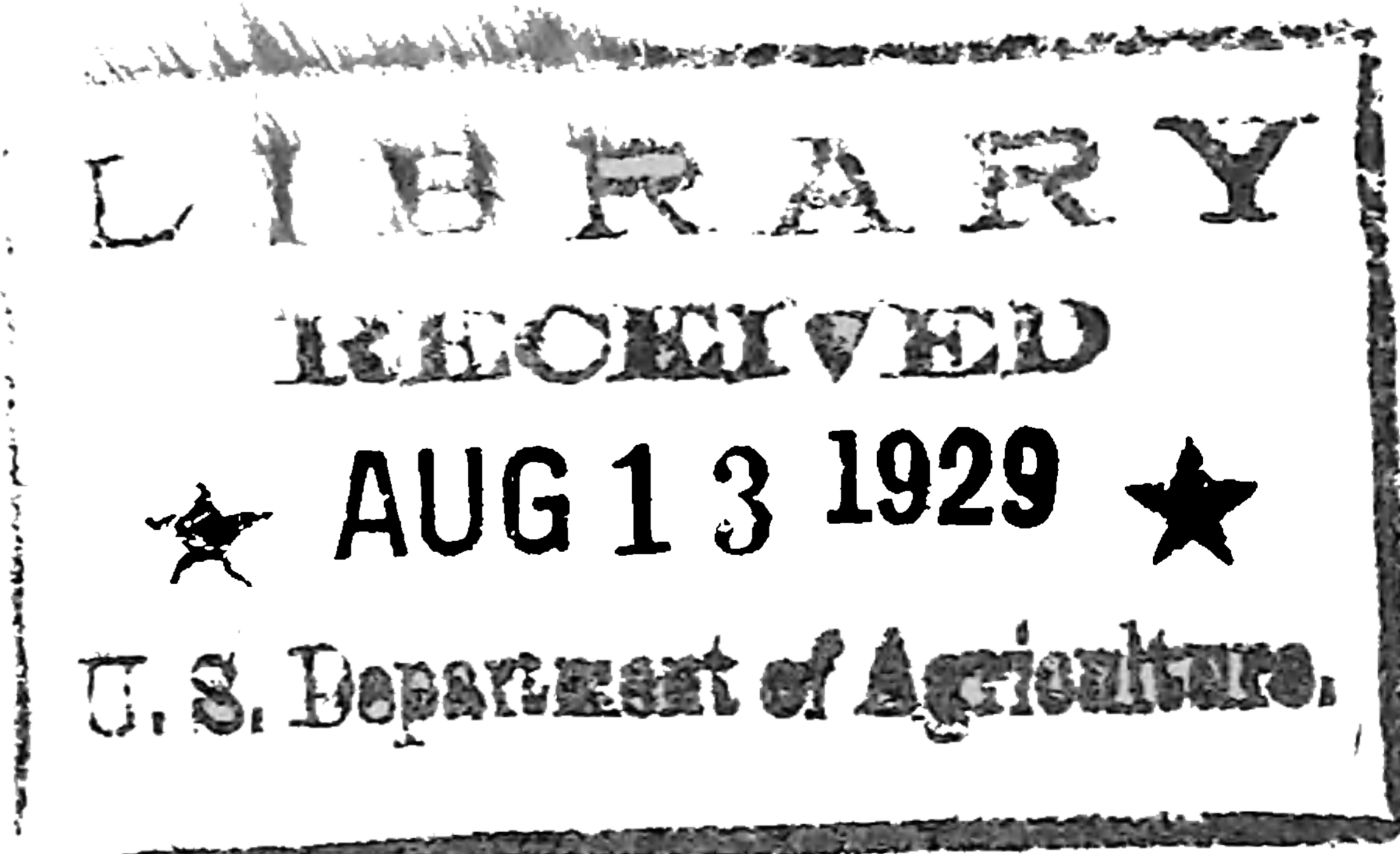
We named and introduced the Eldorado Blackberry some 30 years ago, and it has made a worth while record, and on account of its vigor, productiveness, and blight resisting qualities, in our opinion the Maxine deserves a place among our pears, compared to Concord among the grapes.

Fine 2 year old trees 5 to 6 ft. \$2.00 each or three for \$5.00.

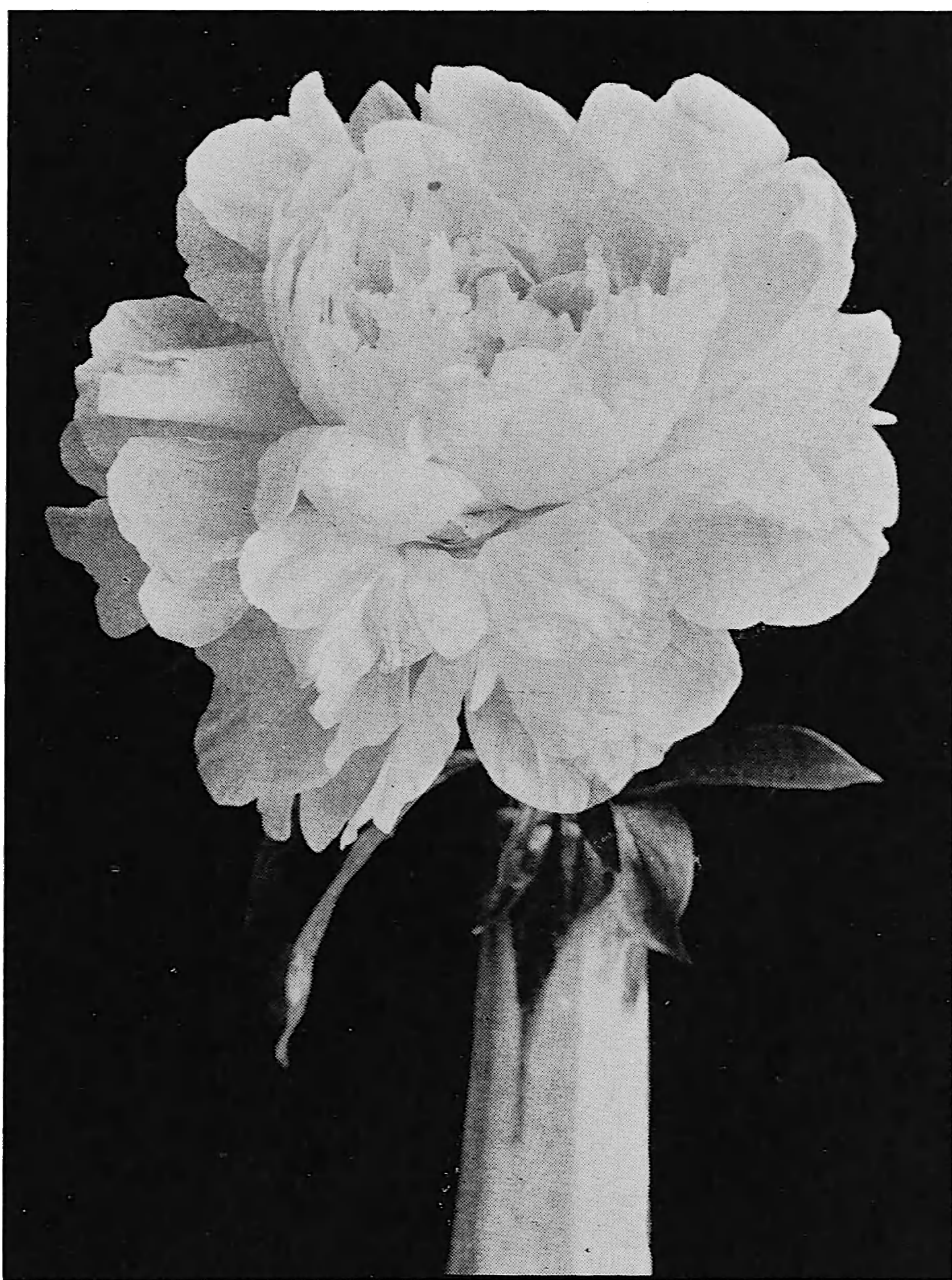
E. M. BUECHLY,

Nurseryman.

GREENVILLE, OHIO



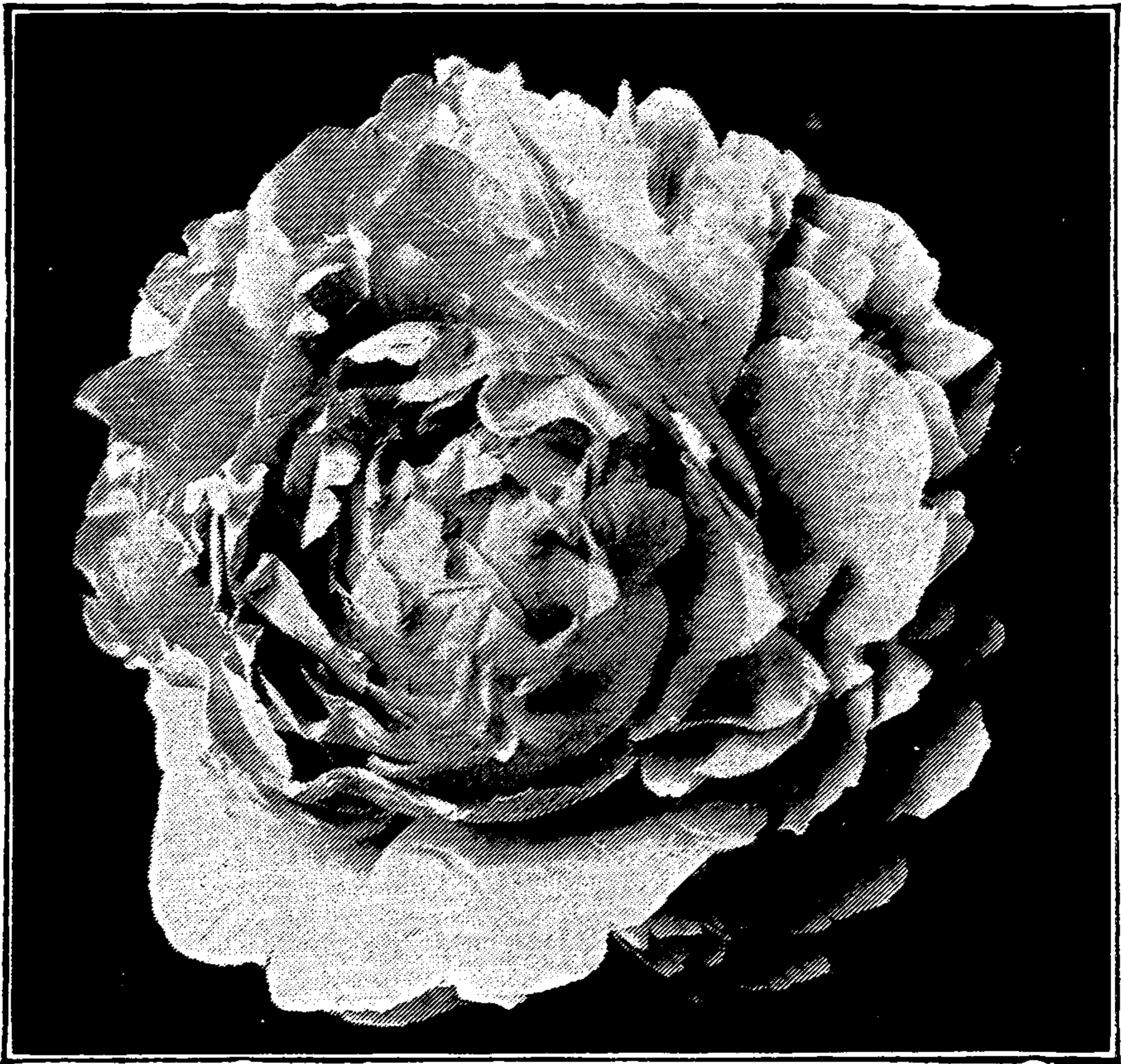
Madame Emile Lemoine , 8.9, (Lem. 1899) ivory-white with markings of crimson, fine, mid-season	1.00
Madame Forel , 7.7, (Cr. 1881) enormous, full rose shaped bloom, deep pink	1.00
Mademoiselle Leonie Calot , 8.1, (Ca. 1861) delicate rose-white, distinct and beauti- ful75



MILTON HILL

Mme. Jules Dessert , 9.4, (Des .1909) one of the very best peonies as to form, free blooming, and delicacy of coloring that we have ever grown, midseason, extra....	4.00
Mont Blanc , 8.6, (Lem. 1899) high built, white, high quality	3.00
M. Dupont , 8.3, (Ca. 1872), very large bloom with more red markings than any other white one we know of, strong grower, free bloomer, very good, mid- season	1.00

M. Jules Elie , 9.2, (Cr. 1888) immense blooms, resembling a chrysanthemum, clear pink with a silvery tinge, good in every way, a universal favorite, and should be in every collection	1.25
M. Martin Cahuzac , 8.8., (Des. 1899) darkest of all peonies to date, dark garnet or maroon, globular flowers of medium size on strong upright stems, mid-season	3.00
Mr. L. Van Leeuwen , (Nieu.), very large, red, prize winner at Ft. Wayne, 1926....	6.00
Mrs. A. M. Brand , 9.6, (B. 1925), purest white; exquisite; gold medal, St. Paul, 1923	50.00
Mrs. Carew , (B.), pink, rose type	1.00
Mrs. C. S. Minot , 9.2, (Minot), shell-pink and white, said to be a very excellent variety by expert growers, but we have not tried it out fully yet	35.00
Mrs. Edward Harding , 9.3, (Shaylor 1918) large pure white, fine quality, full rose type	20.00
Mrs. Geo. Bunyard , 8.6, (Kel. 1898), shell-pink, well formed blooms, free bloomer, good stems, midseason to late	5.00
Nina Secor , 9.0, (Sec.) pure white	10.00
Octavie Demay , 8.5, (Ca. 1867)flesh-pink, dwarf habit, good stems, early	1.00
Officinalis Rubra , the old fashioned extra early deep red75
Opal , 8.5, (Pleas 1908) large, rose type, pink, exquisite	3.00
Petite Renee , very odd variety, approaching the Japanese type, wide guards and tufted center of narrow petals, a violaceous pink, midseason	1.00
Philippe Rivoire , 9.2, (Riviere 1911) fine, bright crimson, good form and habit, one of the very few red peonies with agreeable fragrance, very scarce	12.00
Phoebe Cary , 8.8, (Brand 1907) large, very soft rose-pink blooms, carried on tall strong stems, very excellent	6.00



THERESE

Phyllis Kelway , (Kel.) bright pink; a choice variety	15.00
Pres. Wilson , 9.3, (1918) soft rose-pink fading to shell-pink, some crimson markings on guard petals, fragrant, late exquisite color and form	45.00
Pride of Langport , 8.9, (Kel.), single, peach-pink	6.00
Pride of Paulding , (Neeley) a new one	25.00
Redbird , 8.6, (Fr.) full double red, unusual in color and form	2.50
Reine Hortense , 8.7, (Ca. 1857) a universal favorite, very charming, pink with crimson splashes, strong upright stems, good grower, mid-season	1.50
Richard Carvel , 8.8, (B. 1913) a splendid early red, bomb type, earlier and said to be better than Felix Crousse in color	4.50
Rosa Bonheur , 9.0, (Des. 1905) a fine soft pink bloom with incurved petals giving it a globular rose shape, rather dwarf grower, mid-season	5.00
Ruigigno , (Jap.), rich dark maroon, tufted center of crepe-like petaloids, crimson and yellow. Large flower of fine substance. An outstanding variety	3.00
Rubra Superba , 7.2, (R.), best, extra late red75

Rose Shaylor , 9.1 (Shay.) flushed white	25.00
Ruth Brand , 7.9, (B. 1907) large compact bomb type, soft lavender pink, good strong stems with length, a good one, some days later than M. J. Elie, mid-season	1.50
Sarah Bernhardt , 9.0, (Lem. 1906) large well formed flowers of a soft shell-pink color, an extra good one, late	2.00
Sarah Carstenson , 8.5, (Terry), Hydrangea pink, rose type. Terry's finest, scarce extra good	3.50
Snow Wheel , (Jap.) white guard petals with yellow petaloids	2.00
Solange , 9.7, (Lem. 1907), here we have unique coloring of a glowing yellowish brown tint found in only a very few peonies and in no other so well defined as in this. Won first as best individual specimen bloom at A. P. A. show, St. Paul, in 1923. Late midseason	3.50
Some Ganako , (Jap.) guards darker than Mikado , center tufted golden, very fine, but habit not as upright as Mikado	5.00
Solfatare , 7.6, (Ca. 1861), one of the few yellow tinted peonies when opening, fading if left in sun50
Souvenir De Louis Bigot , 9.1, (Des.), a beautiful Bengal rose color. Somewhat similar to Walter Faxon , a choice variety and quite scarce	5.00
Souv. de Gaspard Calot , 7.4, (Ca. 1865) fine pink, midseason	1.00
Splendida , 8.3, (Kel.), strong, tall grower, large rose shaped blooms of lilac-pink color, very fragrant, midseason to late....	3.00
Stephanie , 8.0, (Terry), a beautiful delicate pink flower, good grower, large, late or midseason	2.00
Suzette , 8.2, (Des. 1911) brilliant rose-pink with gold stamens, full bloomer, good strong stems, midseason	1.50
Tamatbako , (Jap.), pink with yellow tufted center, extra good	15.00



THIS PAGE IS LOCKED TO FREE MEMBERS

Purchase full membership to immediately unlock this page

Know Your Bible

Forgotten Books'
Full Membership
provides unlimited
access to more than
28,000 volumes of
Christian literature for
\$8.99/month

**HOLY
BIBLE**

Continue

*Fair use policy applies

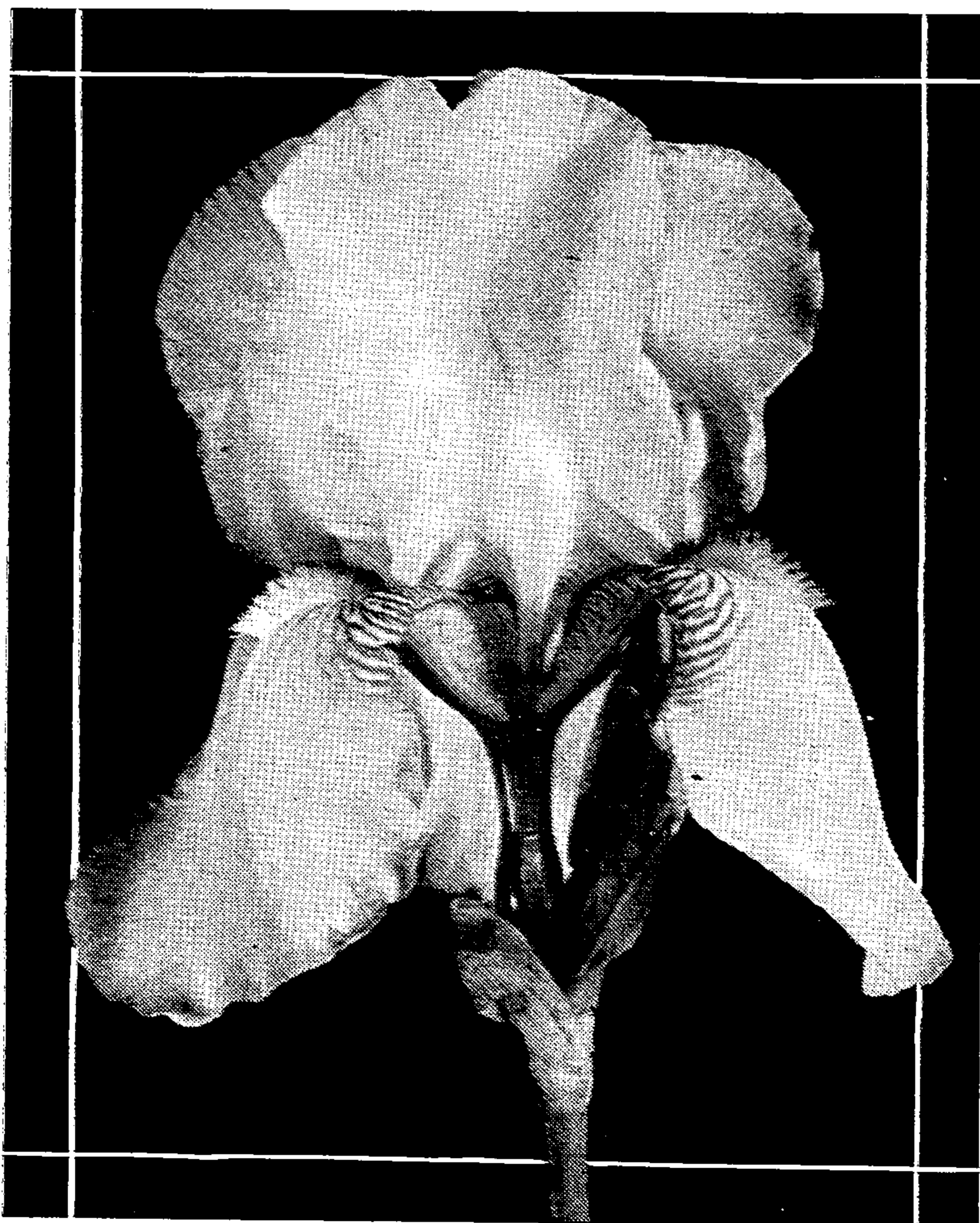
IRISES

Tall Bearded Varieties

In the Iris list, S. indicates the standards and F. the falls or lower petals.

	ea.	five
Afterglow , 8.3, (Sturtevant), soft grayish pink, 36"	\$.50	\$ 2.00
Alcazar , 8.9, (V. A. and C. '20), S. bluish lavender, F. rich purple, vigorous, 36"35	1.50
Ambassadeur , 9.4 (Vilm. '20) strong plant with stout stems, about 4 feet high. Flowers very large, S. reddish violet, F. rich velvety dark reddish violet of great substance and almost horizontal. A magnificent variety. See colored plate between pages 12 and 13....	1.00	4.00
Ambigu , 8.3, (Vilm. 1916), a fine variety, a strong grower and free bloomer. S. smoky red, F. velvety reddish brown50	2.00
Anna Farr , 8.4, (Farr '13) white, blue markings, 36"	1.00	3.75
Anna Leslie , 8.3, (Sturt. '18), S. white; flushed rose, F. reddish carmine, 27"75	3.00
Ann Page , 8.6, (Hort.) 919, a lovely pale lavender self with large flowers of splendid shape. The stems are stout and branching and the blooms deliciously scented. Gives the general effect of blue. One of the very best.....	3.00	
Archeveque , 8. 3, (Cil. '11) one of the finest dark irises, 30"35	1.50
Arnols , 7.8, bronze and red, 24".....	.35	1.40
Asia , 9.2, (Yeld. '20), a grand iris, very large flowers and fine, bold upstanding foliage, S. silvery lavender deepening at base to a golden yellow. F. pale reddish purple, lightening in color toward the margin. One of the finest in cultivation, 4½ feet high	4.00	

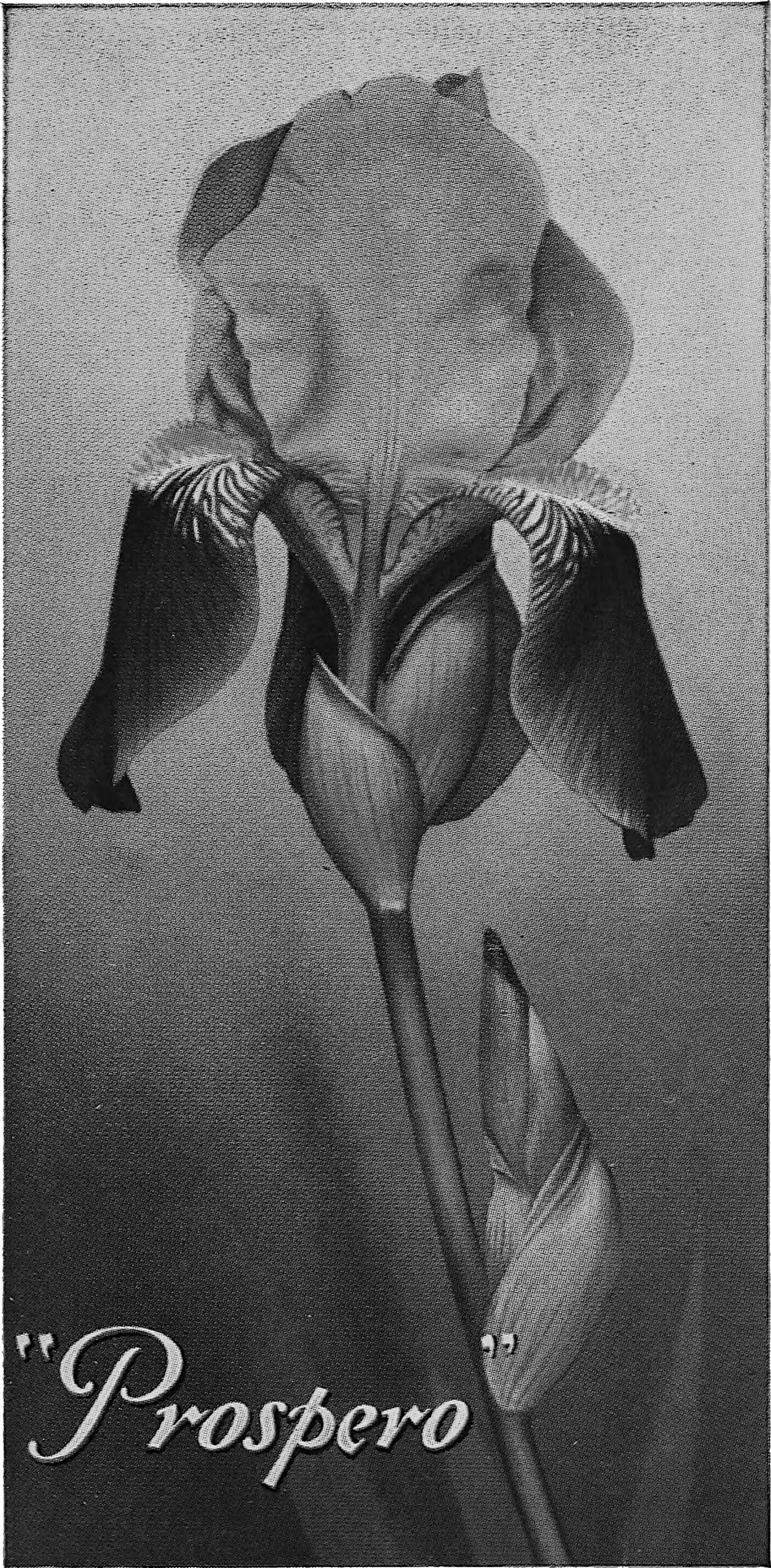
	ea.	five
Avalon, 9.1, pink lavender	7.50	
Ballerine, 9.4 (Vil. '20) another one of the outstanding good irises of recent introduction, said by some to be even more beautiful than Ambassadeur, S. light blue-violet, broad and waved at margins, F. deeper color	1.00	4.00
Bluet, 7.4 (Sturt.), pure blue self, white beard, 24"	40.	1.50
Blue Jay, 7.1, (Farr '13) fine blue very late, 30"25	1.00
B. Y. Morrison, 8.5, S. bluish laven- der, F. purple, white margin	1.00	4.00
Caprice, 7.5, (Vil. '04) good, violet 24"25	1.00
Cardinal, lavender and purple.....	20.00	
Caterina, 8.9, (Foster '09) red vio- let, tall branched, 42"50	2.00
Chester Hunt, 6.9 (Farr) fine blue 30"50	1.75



CLUNY

Cluny, 8.6, (Vil. '20) S. pale lilac blue. F. darker, magnificent, tall, large flower75	2.50
---	-----	------

	ea.	five
Eduard Michel , 8.6 (Verd '04) deep red violet, S. and F. uniform, wine red, 36"75	3.00
Eldorado , 7.8 (Vil.), a beautiful reddish bronze35	1.50
Fairy , 8.0, (Kennicott '05), white, some delicate soft blue marks 30"25	1.00
Georgia , 8.9, (Farr), Cattleya rose, 18"	1.00	4.00
Harriet Presby , (Presby. 1922), pinkish lilac, somewhat near Aphrodite in color and habit. Very tall and desirable	2.00	
Her Majesty , 7.3, (Perry '03) light pink, 24"35	1.25
Iris King , 7.9 (G & K '07) S. rich yellow, F. plum edged yellow35	1.25
Iris King, Jr. , (Buechly 1927), similar to Iris King, but no yellow border and more vigorous, new, very showy landscape variety	5.00	20.00
Isolene , 8.6 (Vil. '04) S. upright pink, F. mauve, one of best in list, 36"40	1.50
Juniata , 8.1 (Farr '09) clear blue tall, large flowers, very fine 36"....	.35	1.40
Kathryn Fryer , 8.1, (Fryer), S. violet, F. maroon50	2.00
Kochii , 7.8 rich deep purple, early 20"25	.80
Lady Foster , 8.5, (Foster), blue and violet, 42"	1.00	
Lent A. Williamson , 9.0 (Wmsn. '18) S. deep blue, F. royal purple, free, vigorous, 36"60	2.50
Lohengrin , 8.2 (G & K '10) old rose shade, free, vigorous, fine25	1.00
Lord of June , 9.1, (Yeld '11) extra, S. blue-lavender, F. blue-violet, 40"75	3.00
Loreley , 7.9, (G & K '09) S. light yellow F. blue bordered cream 24"25	.75
Mme. Chereau , 7.4 (Lemon '44) S. & F. frilled with blue border, 32"25	.75



	ea.	five
Mme. Cheri , 8.4, (Sturt.) violaceous pink, 48"	1.00	3.50
Mme. Gaudichau , 9.3, (Millet '14) S. & F. rich dark purple, vigorous, 36"	1.00	4.00
Mme. Pacquette , purple25	.80
Magnifica , 9.1, (Vil. '20) extra large flower, very fine, 3 to 4 ft.	1.00	3.50
Mary Williamson , S. white, F. purple, bordered white	2.00	
Mildred Presby , (Farr.), S. white, F. rich pansy violet with narrow edge of white, very fine and by some considered Farr's masterpiece, 32"	2.50	
Moliere , 8.5, (Vil.), dark violet75	
Monsignor , 8.4, (Vil. '07), S. rich violet, F. darker25	1.00
Morning Splendor , (Shull) red, purple. I consider this the best American Iris I have yet seen. I have it direct from the originator. Fine in every way	4.00	12.50
Mother of Pearl , (Sturt. '21) a vigorous well branched plant and a fine flower50	2.00
Mrs. Nuebrunner , 6.8, deep golden yellow, 24"25	1.00
Mrs. Walter Brewster	1.00	4.00
Navajo , 7.4, (Farr '13), S. bronzy-yellow, F. deep maroon, veined, 20"30	1.00
Neu de Orage , 7.6 (Verd. '05) S. slaty gray, F. bronze and purple 24"25	1.00
Niebelungen , 6.8, (G & K '10) S. faun yellow, F. violet, handsome and free, 24"35	1.50
Nirvana , 7.7, (Sturt. '28)50	2.00
Opera , 8.7, (Vil. '16) red, violet and purple, rich, 33"75	3.00
Oriflamme , 7.8, (Vil. '04) S. blue, very large, F. dark purple, broad 30"50	2.00

	ea.	five
Oriental, 7.2 (Farr '13) S. clear blue F. rich, royal blue, 32"25	.80
Pallida Dalmatica, 8.825	1.00
Parc de Neuilly, 8.1, (Ver.), deep violet, 30"35	1.25
Pauline, 7.5 (Farr '12) S & F large rich, pansy violet, orange beard, fragrant, 36"25	1.00
Pocahontas, 7.7, (Farr '15) S. & F. white, S. bordered blue, frilled...	.35	1.25
Princess Beatrice, 9.5, (S. & F.), clear lavender blue, large, 40"50	2.00



PRINCESS BEATRICE

Prosper Laugier, 8.3, (Verd. '14), S. bronze red, F. pansy purple, 30"25	1.00
Prospero, 8.5, (Yeld. '20) S. pale lavender, F. deep red purple, very large and fine, 48". See colored plate between pages 12 and 13....	1.00	4.50
Quaker Lady, 8.4, (Farr '09), S. a smoky lavender, F. blue and gold, fine, 38"30	1.00



THIS PAGE IS LOCKED TO FREE MEMBERS

Purchase full membership to immediately unlock this page

HISTORY

Tens of thousands of important historical sources, many previously unobtainable, are now available for the first time with a Forgotten Books Full Membership.

Unlimited Access
\$8.99/month

Continue

*Fair usage policy applies



	ea.	five
Volkyrie , new, price on request		
White Knight , 8.3, (Saunders '16), sweet scented, pure white50	1.75
Windham , 7.3 (Farr '09) S. lavender pink, F. veined darker50	2.00
Wyomissing , 7.2, (Farr '09), S. creamy suffused soft rose, F. rose25	.75
Zua , 7.5, (Crawford), white, creped	.50	

MISCELLANEOUS IRISES

Blue King , (Orientalis), deep blue graceful for table bouquets25	1.00
Snow Queen , (Orientalis), cream white25	1.00
Gold Band , (Koempherii), white and gold, very large and fine35	1.25
Jap Iris , (Koempherii), dark blue, gold center35	1.25
Ocre Leucea , ivory white, light yellow markings, very tall50	2.00
Pseudo Acoris , yellow, vigorous, tall, likes moist location35	1.25

Hardy Phlox , Rhynstrom, fine salmon pink25	1.00
Hardy Phlox , Rheinlander, pink with deeper eye25	1.00
Hardy Phlox , Frau Anton Buch- ner, best white25	1.00
Hardy Phlox , mixed colors, not labeled. Plant in Sept. or spring	.10	.40
Oriental Poppies , fiery orange red and two shades of salmon pink either kind. Plant in August and September only50	2.00
Gold Medal Delphiniums , beautiful shades and tints of blue and pur- ple, 5 to 6 feet high the second year. Plant in September. Seed per package, 40 cents25	1.00

General list of Gladioli will be issued later

Address all communications to

E. M. BUECHLY, Greenville, Ohio.