

Florida Tech TODAY

A magazine for Alumni and Friends of Florida Institute of Technology

FALL 2012

SURF THERAPY

HALF A WORLD AWAY, AN ALUMNUS FINDS SOLACE IN THE SURF

DUANE DE FREESE '81 M.S., '88 PH.D.

AERIAL OBSERVATIONS

Alumni lead two
visionary projects at
Northrop Grumman

IN THIS ISSUE

FOOTBALL UNIFORMS UNVEILED
ON THE BEAT WITH A BRITISH BOBBY
THE LINDEMAN FOR THE JOB

President's Perspective

Dear Florida Tech Alumni and Friends,

I can't imagine a more exciting time in the history of Florida Tech. Both academically and athletically, your university's trajectory continues its upward climb to greater prominence.

In August, the *Chronicle of Higher Education Almanac 2012* ranked FIT the third fastest-growing campus in the nation, comparing private, nonprofit research institutions. We were in great company—ahead of Drexel University, Cornell University, Georgetown University and Rice University. I'm proud that we've found the successful formula to balance growth and high-tech learning opportunities while still maintaining small class sizes.

For the third straight year, *U.S. News & World Report* ranks us as a Tier One Best National University. Among the 1,500 institutions annually assessed by the publication, Florida Tech was among the top national universities.

Athletically, we unveiled our new football uniforms Sept. 14 and played our first full scrimmage the next day. The launch of Panther football is gaining us national notoriety and bringing well-deserved attention to all of Florida Tech. Go Panthers!

All this, and the 44th President of the United States chose to make a stop on campus Sept. 9. Florida Tech continues to make headlines as its excellent reputation gains additional attention.

As we look forward to our 55th anniversary next year, I remain confident that the best is yet to come. Thanks for all you do to support your university.

Sincerely yours,



A.J. Catanese, Ph.D., FAICP
President and Chief Executive Officer



*A Decade of Service:
Honored with the August
cover of Spacecoast Living.*

Florida Tech TODAY

<http://today.fit.edu>

Florida Institute of Technology
PRESIDENT AND CHIEF EXECUTIVE OFFICER
Anthony James Catanese, Ph.D., FAICP
EXECUTIVE VICE PRESIDENT AND CHIEF OPERATING OFFICER
T. Dwayne McCay, Ph.D.
VICE PRESIDENT FOR MARKETING AND COMMUNICATIONS Wes Sumner

Florida Tech TODAY is published three times a year by Florida Tech's Office of Marketing and Communications and is distributed to over 50,000 readers.

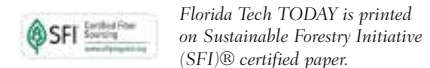
MANAGING EDITOR/DESIGNER Judi Tintera, jtintera@fit.edu
EDITOR Christena Callahan, ccallaha@fit.edu
ASSISTANT EDITOR Karen Rhine, krhine@fit.edu
CONTRIBUTING WRITERS Stephanie Bacon, Christena Callahan, Bino Campanini, Shelley Johnson, Ryan Jones, Andy McIlwraith, Lisa M. Onorato, Karen Rhine, Gretchen Sauerman
PRODUCTION Rob Gribbroek, Kristie Kwong
WEB LAYOUT Joshua Culver
CIRCULATION Ali Faisal
PHOTOGRAPHY Mike Brown, Barry Eager of Phantom Films of Florida, Kandui Resort/FTR Films, Marty Katz/Northrop Grumman, Jennifer Nessmith, Amanda Stratford

ALUMNI OFFICE
ASSISTANT VICE PRESIDENT FOR ALUMNI RELATIONS
AND EXECUTIVE DIRECTOR, ALUMNI ASSOCIATION
Bino Campanini '90, '92 MBA (321) 674-8434, bcampanini@fit.edu
ASSOCIATE DIRECTOR
Diane Deaton '10 MBA (321) 674-7198, ddeaton@fit.edu
ASSISTANT DIRECTOR Marjorie Beckett '98, '08 MBA (321) 674-7642, mbeckett@fit.edu
ALUMNI RELATIONS COORDINATOR Hazel Roskamp (321) 674-7190, hrosskam@fit.edu

HOW TO KEEP IN TOUCH
Florida Tech, Office of Marketing and Communications, 150 W. University Blvd., Melbourne, FL 32901-6975 (321) 674-6218, Fax (321) 674-6399, fltechtoday@fit.edu
CHANGING ADDRESSES?
Don't leave copies of your alumni magazine behind. Send your new address to Florida Tech, Office of Development Services, 150 W. University Blvd., Melbourne, FL 32901-6975, adv@fit.edu

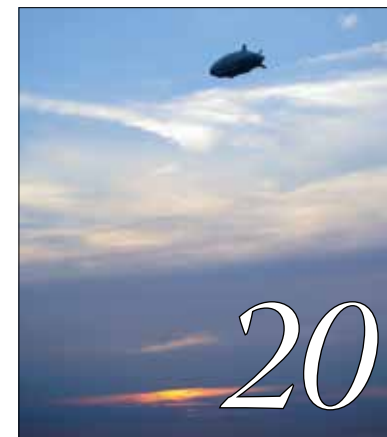


www.fit.edu
© Copyright 2012 by Florida Institute of Technology. All rights reserved. Reproduction by any means whole or in part without permission is prohibited. For reprint information, contact Florida Tech TODAY at (321) 674-8963, Fax (321) 674-8606 or jtintera@fit.edu.

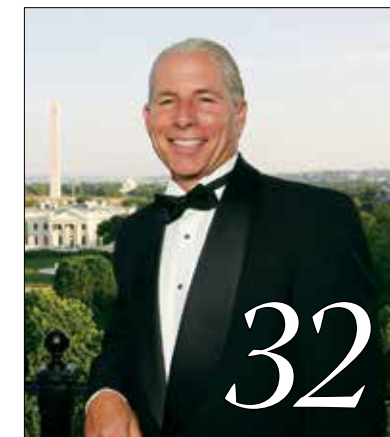


Florida Institute of Technology does not discriminate on the basis of race, gender, color, religion, creed, national origin, ancestry, marital status, age, disability, sexual orientation, Vietnam-era veterans status or any other discrimination prohibited by law in the admission of students, administration of its educational policies, scholarship and loan programs, employment policies, and athletic or other university sponsored programs or activities.

IN THIS ISSUE



Feature: Aerial Observations



Cover: Surf Therapy Duane De Freese



Register for Homecoming 2012!

cover story

32 Surf Therapy
After an unthinkable loss, Duane De Freese embarked on the trip of a lifetime—an Indonesian surf expedition that was both cathartic and catastrophic.

features

20 Aerial Observations
Alumni lead teams at Northrop Grumman in the development of two highly anticipated projects—the James Webb Space Telescope and the Long Endurance Multi-Intelligence Vehicle (LEMV).

23 Football on the Field
Fans fill the Clemente Center and pack Pirate Stadium for the football uniform unveiling and pep rally and the first intra-squad scrimmage.

24 Emerging Engineering
Closing the gap between engineering and medicine, biomedical engineering has evolved from an interdisciplinary specialization to a field in itself.

26 On the Beat with a British Bobby
Paul Robertson protects and serves as a police constable in a seaside community south of London.

28 The Lindeman for the Job
The synergy of sustainability, scientific research and sage scholarship is all in a day's work for Professor Ken Lindeman.

departments

President's Perspective.....	2	Development	11
Two Cents	4	Alumni Spotlight	27
On Campus	5	Athletics	30
etc.	10	Alumni News Notes.....	59

On the cover: Duane De Freese at Hideaways, Indonesia, focusing on looking down the line ... a good lesson for life. Photo credit: Kandui Resort/FTR Films

alumni news

From the FTAA President.....	14
Homecoming Schedule.....	14
On the Road	16
Alumni Spotlight	27
Alumni News Notes.....	59
Q&A with Bino Campanini	62
Honor Roll of Donors.....	36

Alumni Association
John Valente '76, '81 President
Hampstead, NC
jfunding@yahoo.com

Alexis Loo '75 Vice President
Pasadena, MD
alexisloo@msn.com

Penny Vassar '98 Treasurer
Anderson, SC
pvassar@fit.edu

Allyn Saunders '76, '80, '83 Secretary
West Melbourne, FL
alynpar5@aol.com

Mike Gordon '94, '00 Member-at-Large
West Melbourne, FL
mlgordon@cfl.rr.com

Find expanded coverage,
photos and videos at:

today.fit.edu

Feedback From Our Readers

Welcome to our revitalized "Mailbag" section, "Two Cents," where we publish reader feedback to Florida Tech TODAY. Response to our recent readership survey indicated you would like to see a return of this section. Dwindling correspondence prompted its retirement, but we are happy to revive it and welcome your input on the magazine. *Have a comment or opinion you'd like to share? Email us at fltechtoday@fit.edu.*

Who's That Girl?

"The beautiful, blond-haired woman with the million dollar smile in that photo is **Sandi Billings**," **James Gering**, laboratory director and instructor in the department of physics and space sciences, told us.

Miguel Adao '89 concurred, "She was my boss when I was sports editor at *The Crimson*, 1988-89."

After earning her bachelor's in space sciences at Florida Tech, Billings '90 went on to earn an M.S. in geophysics from the University of Idaho. Today, she is a major gifts officer for Northwest Public Radio at Washington State University.

She remembers her time at *The Crimson* fondly and sends a special greeting to all the staff of the late 80s.

"I was the editor one year and the managing editor the year before. Miguel was the sports editor, and he led a team of four (including himself) who all spoke five languages: English, Portuguese, Spanish, Italian and French (I think). At deadline, they would come in a mad rush and talk a mile a minute, changing from language to language fluidly. It was cool," she recalls.

Two seats to the left with the long earring and balloon is **Michelle Kelley Whisenant '90**. After retiring from the U.S. Navy, Whisenant returned to Satellite Beach with her husband of 22 years, Rob. She currently teaches online classes in physical science for a community college in Maryland and for Florida Tech University Online.



Cover Critique

"Thank you for the latest copy of *Florida Tech TODAY*. However, I at first threw it out because it appeared to be a whole brochure about CarMax. While I realize you have to promote successful alumni, this is way over the top in terms of brand placement, not befitting a university publication. I receive many such publications and have never seen such blatant first cover advertising!"



*Daphne Lange Rosenzweig, Ph.D, ISA CAPP
President, Rosenzweig Associates, Inc.*

Editor's Note: Our goal was to acknowledge the success of an alumnus who founded and leads a well-known Fortune 500 company. We welcome commentary from our readers in order to continue improving the magazine.

Hot Topic

Most viewed article from the online edition of *Florida Tech TODAY*:

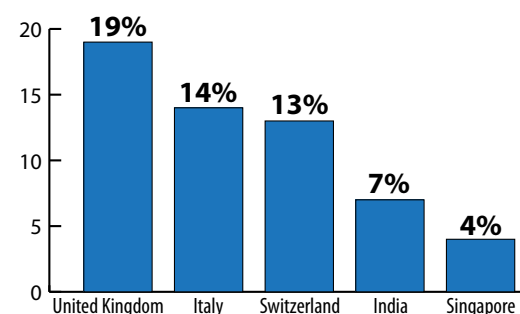
Nothing But Net-Working

552
HITS

Global Appeal

Readers from Australia to Zimbabwe viewed the online magazine.

The most international traffic came from:



President Obama Speaks at Clemente Center

Barack Obama, in the first-ever visit of a United States president to Florida Tech, made a 35-minute speech to about 3,000 in the Charles and Ruth Clemente Center on Sept. 9. The visit, while not representing a university endorsement, brought the president to campus on a campaign swing through Florida. Some attendees, including Florida Tech students **Karolyn Burns** and **Ashley Fish** (pictured below), began lining up before midnight to make sure they could claim a good spot in the Clemente Center when the doors opened. See additional social media coverage at <http://bit.ly/FIThostsObama>.

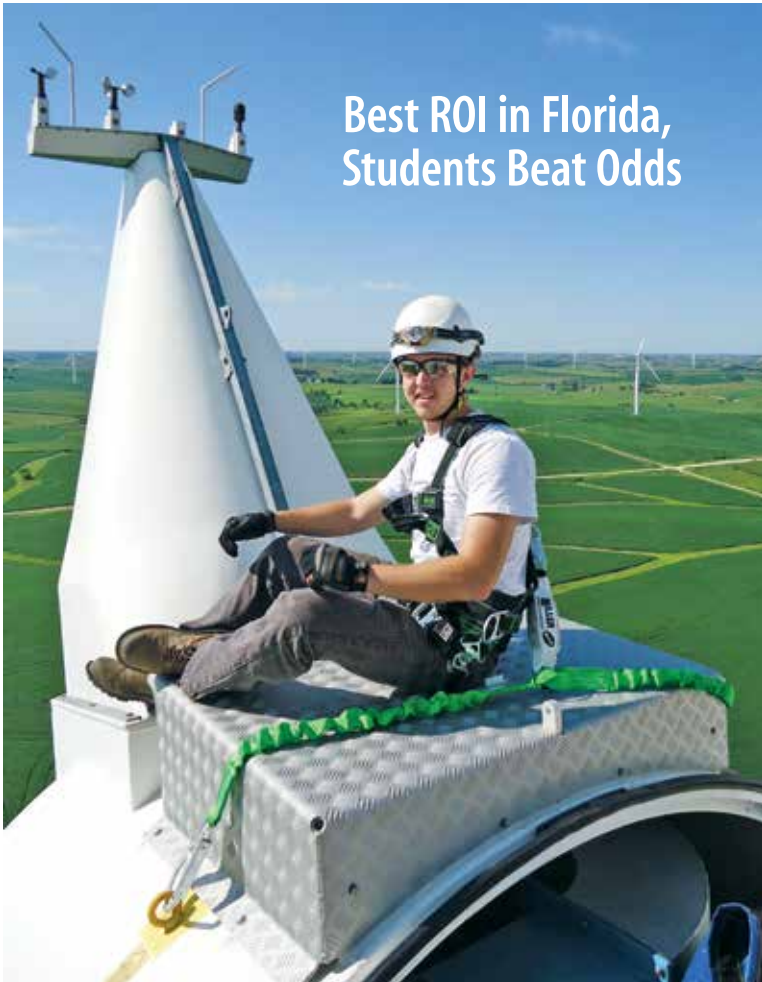


TEDx Lecture at Gleason Center

A highlight of this summer's International Space University/Space Studies Program (ISU-SSP12) hosted on campus was the TEDx lecture on July 6. Attendees filled every seat in the Gleason Performing Arts Center to listen to "ideas worth sharing" around the theme of Open Source Space. Read more about the event, the speakers and the other exciting ISU activities at Florida Tech this summer at <http://blogs.fit.edu/blog/category/campus/isu>.



Best ROI in Florida, Students Beat Odds



Bryan Gillenwater '11 was snapped up by Siemens when he graduated last May from Florida Tech with a degree in mechanical engineering. That he was one of the first to graduate with a minor in sustainability from the university couldn't have harmed his prospects.

After a successful year as an engineer in training at Siemens Wind Service Americas, Gillenwater

is in a new job. He's a project engineer with Global Operations Management for Offshore Service, working out of the Siemens Wind Power headquarters in Brande, Denmark.

"I highly recommend taking the sustainability and global business courses at Florida Tech. The subject matter applicability and experience in an interdisciplinary environment helped me substantially after graduation," he said.

Gillenwater is one statistic among the results now in from the follow-up graduation survey of the classes of December 2010 and May 2011 who attended the main campus. According to respondents, 94 percent of graduates are today employed, in the military or enrolled in graduate school. Up to 89 percent of those who said they were employed are working in their major.

This contrasts with a *U.S. News & World Report* story of April, 22, 2012, which said, "About 1.5 million, or 53.6 percent, of bachelor's degree-holders under the age of 25 last year were jobless or underemployed, the highest share in at least 11 years." The report continued: "Out of the 1.5 million who languished in the job market, about half were underemployed, an increase from the previous year."

The Florida Tech graduation survey results also documented that the 45 percent of respondents who are employed are earning more than \$50,000 a year. Finally, 58 percent of respondents participated in a co-op, internship or other major-related work experience while at Florida Tech.

The university is recognized by *Bloomberg Businessweek* and a recent survey by PayScale.com as the top private university in Florida for return on investment.

Meticulous Measuring

A sea of 2,500 numbered golf balls plummeted toward the pin from a helicopter at the ninth annual Chopper Dropper event this spring. A total of 13 lucky winners received cash prizes, including grand prize winner Joseph Pauldine, of West Palm, Fla. Part of Sporting Affair XX, the signature event supports student-athlete scholarships.



Founders Club Contributes \$1.2 Million for Football Funding

A dozen donors have pledged a collective \$1.2 million to help launch a new era for Florida Tech athletics. At a special "Inside the Huddle" football banquet last spring, featuring legendary football coach Howard Schnellenberger as keynote speaker, President and CEO **Anthony J. Catanese** introduced members of the Panthers Football Founders Club.

Helping kick off football are Stephen K. Badolato, M.D., Premier Sports Medicine; Thomas Biddix, Biddix Charity Foundation; Carol Craig, Craig Technologies; John Fielding; Chip Lafferty, Hill York; Bruce Nelson Jr., Brevard County Hyundai; Steve Ryland, Beachside Health Studio; Mahesh "Mike" Shah, Southeast Petro Distributors Inc./M&R Enterprises Inc.; Scott Sorensen, Sorensen Corporation; Mike Valletutti; Tony Weight; and Mike Williams, M.H. Williams Construction Group Inc.

For information on football fundraising, contact **Matt Kilcullen** at mkilcullen@fit.edu or (321) 674-8427.

Making News

Florida Tech star researchers often find themselves the subject of international and national news for their work and expertise. Below are a few who have recently found themselves in print and facing TV cameras.

Natural History Magazine
Research news from Mark Bush, on the pre-Columbian human impacts on the Amazon Basin, found an international audience in summer 2012.

National Geographic Wild TV program, "Animal Superpowers"
Michael Grace was filmed setting up a mobile lab in the swamps of Florida. He used one of the world's best infrared video cameras to demonstrate the ability of pit vipers and pythons to "see" the thermal world even in complete darkness.

New York Times and more than 60 other media outlets
Biological Sciences Department Head Richard Aronson's published paper in *Science* about evidence for potential coral system ecosystem collapse was picked up with great interest around the world.

Discovery Channel Canada (to air January 2013)
Joe Dwyer and Dan Batchelor, physics and space sciences faculty, faced the camera to tell what they know about mysterious space phenomena and the possibility that intelligent life is traveling through the universe.

National Public Radio
Marcus Hohlmann reported on his department's involvement at CERN with the Compact Muon Solenoid experiments and the news that a particle was observed consistent with the long-sought Higgs Boson.

Students Make the Difference

Students are a big reason why Florida Tech has again been named to the President's Higher Education Community Service Honor Roll. This is the sixth consecutive year that the university has earned the national recognition for its exemplary community efforts.

Lucas Worthen and **Wade Dauberman '12** are just two who put Florida Tech on the national radar.

Through the animal advocacy group Pilots N Paws, College of Aeronautics student Worthen flew three-month-old black Lab, Hattie, from Florida to Los Angeles. The homeless pup, scheduled to be put down, was saved by Worthen who delivered her by Piper Archer to the family who adopted her.

Dauberman earned the university's first bachelor's degree in astrobiology last May then commenced to bicycle 4,700 miles in honor of his father who died of the rare disease Scleroderma. He cycled across the country to raise Scleroderma awareness and research funds.



Ongoing arts events

Ernst Oppler: German Impressionist
Sept. 15, 2012–Jan. 6, 2012
Foosaner Art Museum
www.foosanerartmuseum.org

Battle Worn: Masculine Ideals and Military Identity in Modern Japanese Textiles
Sept. 8–Dec. 15, 2012
Ruth Funk Center for Textile Arts
<http://textiles.fit.edu>

Swimming Scholar



Brayden Thompson

The newest Farmer Scholar, Brayden Thompson, not only held a 4.5 GPA and was president of the National Honor Society chapter at Astronaut High School, but was a varsity letterman in swimming and diving, and track and field. Starting this fall as a chemical engineering major, he is the fourth Farmer Scholar.

Phillip W. Farmer, retired chairman, president and chief executive officer of Harris Corp., donated \$1.5 million to establish this endowment, which provides a full four-year scholarship awarded annually to a Florida high school graduate.

Q. What does it mean to you to receive the distinction of being a Farmer Scholar?

A. Receiving this distinction means the world to me, because all of my hard work is finally paying off. I am so grateful to everyone who was involved in my selection, and I am especially grateful to Mr. Farmer. If it weren't for his generosity, this wouldn't be possible.

Q. What inspired you to come to Florida Tech?

A. I knew Florida Tech was one of the top engineering schools—when I started looking into colleges, I came for a tour. I had always been skeptical of the idea that when you first visited a college campus you would know if it was the right one, but when I first came to Florida Tech, I knew it was where I wanted to be.

Is State Data Transparent?

Some state governments are much better than others at providing transparency in access to their spending data. This is according to new results from the Nathan M. Bisk College of Business' Activity Based Total Accountability (ABTA) Institute. The ABTA Institute mission is to provide and promote simplified accountability measures and cost/performance comparisons for effective decision making by government leaders.

Based on website analyses, each state earned a grade on the institute's report card at http://abta.fit.edu/report_card. They range from the best—A-minus for Indiana, New Jersey and Utah—to the lowest, with nine states earning an F. Florida rated B-plus, ranking fourth out of 50.

"This effort creates transparency in government spending to serve the taxpayer," explains ABTA Institute Director Deborah Carstens. For information on what went into the ratings, see the reports and tables at: <http://abta.fit.edu/data>.



Expert Advice: Making the Most of Your Mobile Battery Life

Associate Professor **Veton Kepuska** is concluding a study funded by the Department of Energy on the battery life of mobile devices. From novelty to necessity, mobile devices have become a staple for most consumers. But what if you run out of juice? Here are a few tips to keep you connected:

Use It

Want to extend the life of your battery? Keep using it. The charging circuitry of the device has all the "smarts" to optimize performance.

Size Matters

The larger the screen, the more energy consumption that occurs (assuming the same screen technology is applied).

Energy Efficiency

Smart devices, like smart phones or tablets, are designed to minimize energy consumption. Kepuska's research shows the energy usage of smart devices is at least 400 times better than that of single function devices. Additional energy conservation strategies include unplugging your charger when not in use and turning off your device during the night.

Where Am I App?

Trying to find your way around campus? There's an app for that!

Developed by undergraduate students **Frank Sanchez, Roger Cotrina and Joseph Del Prete**, the FIT Mobile App is available for iPhone and Android devices and offers a variety of features, including:

- A geo-locator map that displays the location you search for
- Directories offering one-click emailing and direct dialing
- Daily menus for campus dining locations
- Live streaming of WFIT radio

The FIT Mobile App is a free download from the Apple App Store or the Google Play marketplace. Simply search "Florida Tech" or scan the appropriate QR code!

Android



iPhone

What's New on Campus

Changes continue to take shape all across the Florida Tech campus. To put these improvements in perspective, we've mapped it out.

WFIT Radio Station
The new home of WFIT Radio will open this fall with state-of-the-art equipment for high-quality broadcasting and dedicated space for live studio performances.

Florida Tech Commons
Home to the newly established Center for Student Success, this building offers a centralized hub of student services—admissions, financial aid, the registrar and campus services. It also houses the School of Psychology and continuing education programs.

Panther Dining Hall, Panther Grocery & Parking Decks
The main residential dining facility offers daily specials from international cuisine to home-style favorites. Panther Grocery, located in the lobby, offers fresh produce, frozen foods, pantry staples and other grocery items.

Panther Aquatic Center
Site of FIT's swimming facilities, the aquatic center includes both competition and recreation pools.

Varsity Training Center
Situated next to a new synthetic turf practice field and opening this fall, the training center will feature a football locker room, weight room for all varsity sports, meeting room, equipment room and laundry room. It will also include offices for football coaches and athletic trainers.

etc.

Motorsports Mentor

NASCAR legend and local businessman Geoff Bodine (below left) is serving as honorary advisor to Florida Tech's student design motorsports teams in the College of Engineering, which include projects like the concept car, mini baja and Formula SAE. In this role, Bodine will advise students on some of their designs.



Passport Pete

This summer, Pete the Panther traveled the globe with students, staff and alumni. View his complete vacation at <http://bit.ly/PassportPete>

Above: Pete visited Calaveras Big Trees State Park, Calif., with Michelle Boehmke Fillingim '97, Matthew Fillingim '95, '97, and children Kiara, 8, and Drake, 5.



Growing Greeks

A new fraternity, Sigma Tau Gamma, is joining the ranks of Greek Life on campus, becoming the eighth organization within Florida Tech's InterFraternity Council. The colony, comprised of 17 founders, has started the yearlong process of becoming a chapter.



One Minute Awareness

Spreading science one minute at a time, Florida Tech alumnae are involved in two different public radio broadcasts. At WFIT, **Sarah Arnett '10** Psy.D. delivers the Psychology Science Minute, sharing relevant scientific research in the field of psychology.

At WQCS in Fort Pierce, Fla., **Sarah Frias-Torres '01** Ph.D. produces the Ocean Minute about ocean conservation.

Learn more about the Psychology Science Minute at: <http://cpla.fit.edu/psych/psychology-science-minute.php>

Learn more about the Ocean Minute at: www.teamorca.org/cfiles/ocean_minute.cfm



Susan St. Onge at Helm of Development

Since assuming her position June 1 as senior vice president for development and chief development officer, Susan St. Onge, JD, MBA, has hit the ground running—working closely with President and CEO Anthony J. Catanese, executive leadership and staff on the upcoming capital campaign plan. St. Onge brings with her an extensive background in development and specifically capital campaigns.

St. Onge joins the development team from Case Western Reserve University in Cleveland, Ohio, where she most recently served as associate vice president for planned giving. She also held the position of senior associate dean for development in the School of Medicine and positioned the school to exceed its \$350 million campaign goal. Other development positions include chief development officer at Yale-New Haven Hospital, where she provided leadership on a \$100 million campaign, and executive roles at several hospitals and foundations in Cleveland and New York.

A Juris Doctor, St. Onge said her foray into the field of philanthropy was the result of an inspiring meeting. “There was a particular hospital I admired in my community,” she said. “I met the senior vice president, and he made me realize how my skills as an attorney could benefit the hospital.”

Now, St. Onge looks forward to inspiring Florida Tech alumni and friends of the university. “I would encourage alumni to consider the fact that they are what our students aspire to be and to be motivated by what they can do for our students—whether it’s counsel them, open doors for them, support their school experiences or financially support the university.”

St. Onge says the university’s future looks bright. “In today’s environment, when the world seems to be asking the question ‘Is the cost of higher education really worth it?’—we can answer with a resounding ‘Yes!’ FIT delivers an excellent product. Our students graduate in four years, and a very high percentage are employed soon after graduation. They find good jobs and more and more are staying connected or reconnecting with us as alumni.”

No stranger to the Space Coast, St. Onge and her family lived in Merritt Island in the 1980s, and she has fond memories of the early days of the shuttle program. Her husband, Tom, is a manager who spent some time at Kennedy Space Center and is currently with NASA at its Glenn Lewis Research Center in Cleveland. Their son, Jason, is an associate at BG Strategic Advisors, a merger and acquisition firm in West Palm Beach.

“In today’s environment, when the world seems to be asking the question ‘Is the cost of higher education really worth it?’—we can answer with a resounding ‘Yes!’”

Susan St. Onge, JD, MBA

Lisa M. Onorato

To the Stars through Showcase

The 2012 Northrop Grumman Engineering & Science Student Design Showcase brought more than 100 industry leaders and alumni to campus in April to evaluate a new crop of capstone senior projects. From a philanthropic standpoint, two critical types of gifts help make this event a success. The first is funding, ensuring student teams can purchase materials essential to the development of their designs. The second is objective feedback from independent judges with real-world experience.

The funding is made possible through philanthropic support from a number of corporate partners, including a \$1 million endowment created by Northrop Grumman in 2008, which generated roughly \$25,000 for projects this past year. Other financial supporters included Boeing, United Space Alliance, Starport Aviation and Next Era Energy.

A number of corporations also provided the gift of time and talent, allowing their employees and senior managers to spend the day interacting with students, asking challenging questions and posing critical “what-if” scenarios. Volunteers came from Authentec, Boeing, DRS, General Electric, Harris Corp., Hill York, Intersil, L-3 Communications, LiveTV, Lockheed Martin, NASA, Patrick Air Force Base, Piper Aircraft, Rockwell Collins and SAIC.

Arpat Rodpai, a Northrop Grumman employee and Ph.D. candidate in electrical engineering, has served as a judge for the past two years. “Overall, I think it is an excellent event for everyone,” he says. “It allows students to become innovative, collaborative and have self-confidence about their skills. The presentation component helps students prepare for real jobs.”

Alumni bring an industry perspective, along with a historical frame of reference. **Al Hagopian** '89, '94 MBA, was a first-time judge this year. “Times have changed dramatically from the '80s where we only had feedback from our advisor(s) and instructors during the year,” he explains. “Giving back in some small capacity to the community makes me proud of my heritage at FIT.”

Recent alumni also play a valuable role, given their familiarity with the event from a student perspective and their growing industry experience. **Kevin Shah** '09 has judged two showcases and says the event offers a glimpse into real-world challenges. “The questions judges ask are based on their experience in the commercial world, which students need to be prepared for, especially when interviewing for jobs,” he says. “Students are tested in every way, and employers have the opportunity to identify talented students for potential employment.”

David Iodice, who holds six Florida Tech degrees, has volunteered as a judge for three years, saying it validates why he chose FIT for his education. “It truly is ‘High Tech With a Human Touch,’” he says. “Having the pleasure of talking one-on-one with the students and feeling their passion for their project is invigorating and rekindles that spark to go ‘to the stars through learning’ (Ad Astra Per Scientiam).”

The next showcase is scheduled for April 19, 2013. To learn more about corporate sponsorship or judging opportunities, contact **Gretchen Sauerman**, director of corporate giving, at gsauerman@fit.edu.

Gretchen Sauerman



Members of the Northrop Grumman Champion Award judging delegation—including Florida Tech alumni Hugh McFadden '10, far left, and Dave Keldsen '05 MBA, fifth from left—congratulate the College of Engineering's winning team: Self-Maneuvering Parafoil.

Philanthropy and the Arts

“Art is more than drawing, painting, sculpture or photography. It is a way of seeing a great adventure, an experience in finding meaning in common ordinary things. Art gives us a vision of our lives, our beliefs and our history,” theorizes Martha Sinclair. Becoming a Founders' Club member of the Foosaner Art Museum harmonizes with her late husband Jack's philosophy of philanthropy and art.

Wistfully, Martha shares the passionate family influence that drew the couple to art. Jack's grandfather owned a movie theater and his mother played the piano for silent movies. As parents of twin daughters, Martha and Jack understood that games are a part of childhood. Often, Jack drew a squiggle line on a piece of paper and the girls turned it into art. Who knew a squiggly line would inspire the twins, Shellie and Sherrie, to become Art History Presidential Scholars.

For the Sinclairs, art is a way of life. “Art adds beauty, encourages imagination and enhances the quality of life in a community,” states Sinclair.

By giving to the Foosaner, the gift continues the time-honored tradition of patrons who cultivate knowledge and nurture beauty for today and generations to come. Martha's hope is that their gift entices others to support the Foosaner Art Museum and elevate it as a key cultural destination for the Space Coast and beyond.

To learn more about supporting the new cultural initiative of Florida Institute of Technology, please contact **Shelley Johnson**, major gift officer, at (321) 674-8079 or shelley@fit.edu.



Martha and her late husband Jack Sinclair

Twice the Impact

Double your gift with a corporate match

The word has gotten out: corporate matching gift programs offer donors a simple way to double or even triple their gifts to Florida Institute of Technology.

As a result of an awareness campaign that began with a P.S. notation on thank you letters and continues with a targeted approach to alumni who work at matching gift companies, Florida Tech is experiencing a significant boost in the number of matched gifts.

“The matching gift amount to the university grew by 50 percent,” said **Ali Faisal**, assistant vice president for development services. “Overall, the college received \$60,000 in matching gifts.”

According to Faisal, more than 16,500 companies in the United States offer matching gift programs. “Some companies will also match donations made by spouses, retirees or even in

recognition of employee volunteer time. There are companies that automatically match gifts made through payroll deductions,” stated Faisal. “We're seeing more and more companies providing gifts and initiating matching programs including Harris, Lockheed Martin, Northrop Grumman, GE, IBM, Boeing and more. We are extremely grateful to these corporate employers and their philanthropic support of education.”

The process for submitting a matching gift claim differs from company to company. To find out if your company has a matching gift policy, visit our company database at <http://give.fit.edu/matchinggifts>. Our development team can also research your company's matching gift policy. Simply send the name of your company to **Stephanie Bacon** at sbacon@fit.edu or call (321) 674-6141.

from the FTAA President

From the desk of John A. Valente '76, '81



With Homecoming and our annual meeting fast approaching, our efforts are focused on several key issues—the Gleason “Name A Seat” Campaign, the vision for the

Alumni House and alumni engagement with the FTAA.

We are supporting the university by taking ownership of the “Name the Seat” campaign for Gleason Performing Arts Center. Our goal is to sell all 500 seats before the end of the year. We must sell all the seats to benefit from the sales, so I urge each of you to buy a seat.

One absolutely vital mission of the FTAA is to broaden and strengthen our engagement with alumni. We welcome participation on many levels: donate to the Alumni Association, volunteer your time as a committee or board member, work with the Office of Admissions to recruit quality students and student-athletes in your area, get involved with active alumni chapters, or even start a new chapter. We continue to work on the challenge of making our online degree alumni feel they are as much a part of our family as those who attended the “brick and mortar” campuses.

In closing, I want you all to know that it has been an honor and a privilege to serve as your president the past two years, and for my second nine-year term on the board. I believe participation in the FTAA has provided me a way to give back to the university (which has given me so much over the years), and more importantly to the people who have made such a difference in my life. I want to thank all of you for this opportunity, and I wish you all the best in the future!

HOMECOMING 2012

Nov. 1–3, 2012

Going for the

Gold

Thursday Nov. 1

10 a.m.–7 p.m.

Ernst Oppler: German Impressionist Foosaner Art Museum

10 a.m.–4 p.m.

Battle Worn: Masculine Ideals and Military Identity in Modern Japanese Textiles Ruth Funk Center for Textile Arts

Noon

Daily Mass, All Faiths Center

5:30 p.m.

Women's Basketball vs. Chilean National Team (Exhibition), Clemente Center

7:30 p.m.

Men's Basketball vs. Chilean National Team (Exhibition), Clemente Center

Friday, Nov. 2

8:30 a.m.–4:30 p.m. (Register/free)

FITSA and the College of Aeronautics present Breaking the Chain 2012—Safety Symposium

9 a.m.–4 p.m.

Florida Tech Alumni Association (FTAA) Board of Directors meeting Trustees Dining Room

10 a.m.–4 p.m.

Ernst Oppler, Foosaner Art Museum

10 a.m.–4 p.m.

Battle Worn, Funk Center for Textile Arts

Noon

Daily Mass, All Faiths Center

Noon–1:30 p.m. (Register online)

Panther Basketball Tip-Off Luncheon Featuring Boston Celtics Legend Sam Jones Hartley Room

5:30–7 p.m. (Invitation only)

Special reception to honor 2012's Jerome P. Keuper Distinguished Alumni, GOLD and Outstanding Alumni award recipients, Yellow Dog Café

6–7 p.m.

Tours of the Buehler Flight Training Facility

7–9 p.m.

Aero Hangar Reception

6 p.m.–1 a.m.

Homecoming Fest, Downtown Melbourne Featuring a free live concert by The Mighty Mighty Bosstones

Saturday, Nov. 3

8 a.m. (Register online)

Homecoming 5K Run/Walk, FIT campus

10 a.m.–5 p.m.

Ernst Oppler, Foosaner Art Museum

Noon–4 p.m.

Battle Worn, Funk Center for Textile Arts

10 a.m.

Homecoming Parade, FIT campus

11–12:30 p.m.

Homecoming cook-out and tailgate party FIT Campus

1 p.m.

Homecoming Intra-Squad Football Scrimmage, Panther Field

4 p.m.

Volleyball vs. Barry, Palm Bay High School

6–10 p.m. (Register online)

Homecoming Awards Gala, Clemente Center, Featuring entertainment by Greg and Brian

**Schedule subject to change.*

Homecoming Fest Rocks Friday Night

The Mighty Mighty Bosstones (“The Impression That I Get”) will headline Homecoming Fest, Florida Tech’s newest Homecoming celebration, in downtown Melbourne on Friday, Nov. 2. Don’t miss this free concert and lively street party featuring food, drinks and live entertainment, sponsored by SGA and FTAA.



THE MIGHTY MIGHTY BOSSTONES

Other Highlights:

5K Run/Walk

Saturday Morning

Race through the Jungle, past Panther Plaza and across south campus.

Register Online

Football

Saturday Afternoon

Check out Panther football in a true Homecoming tradition! The intra-squad scrimmage takes place at Panther Field.

Awards Gala

Saturday Evening

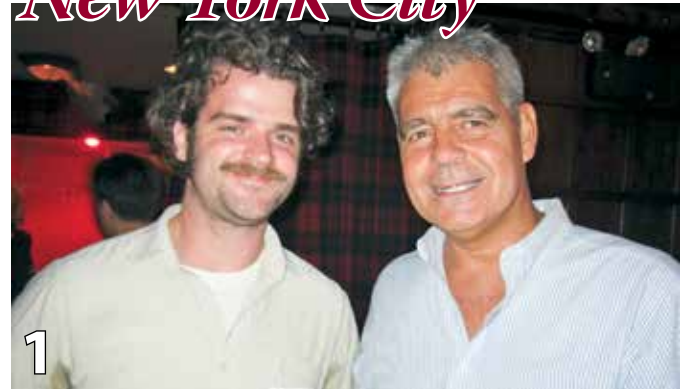
An elegant celebration of Florida Tech’s finest featuring dinner, drinks, dancing and live music.

Register Online

For more information or to register:

HOMECOMING.FIT.EDU

New York City



1) Mathew Murtha '05 and John Sodano '83 **2)** New York Tri-State Chapter leaders Weyni Nazon '01 and Fab Barasti '89 **3)** Talal Qureshi '01 M.S., '03 M.S., guest Elise Liebowitz, Richard Halprin '80 **4)** Stephanie Lovere '75, Trustee Joe Caruso '70, Chuck Reilly '77 **5)** Joe Tafe '02 and President Catanese

Raleigh



1) Parthasarathy Venkatram '99 M.S., Johan Kristoffersen '93 M.S. **2)** FTAA President John Valente '76, '81 with John Fisher '79 **3)** Alumni Executive Director Bino Campanini '90, '92 MBA, and Andrew Major '98

Boston



1) Head Football Coach Steve Englehart and his wife Carrie toured the city during their visit **2)** Florida Tech University Online alumnus Carl Banks '12 with his wife Maureen **3)** Bino Campanini and Ben DiScarcina '89 **4)** President and CEO Anthony J. Catanese and his wife Sara with Bernie Fuchs '70 **5)** Bruce Freedman '76 and his wife Lynne with Coach Englehart



Greater Boston Area Chapter Auctions Signed Wakefield Cap
Greater Boston Area Chapter President Bernie Fuchs '70, left, presented Douglas Schuler '72, '91, with an FIT baseball cap signed by Tim Wakefield. Schuler was the winning bidder for the cap, which was part of a silent auction at the reception to raise money for Boston chapter alumni outreach and activities. Wakefield himself was unable to attend the reception, as it was "Tim Wakefield Day" at Fenway Park. Connect with the Greater Boston Chapter on Facebook! <http://bit.ly/bostonalumni>

Dad Vail



1) Bill Jurgens with rowing alumni 2) President Catanese and his grandson Robert 3) Jamie Breslin '95 and Keiran Breslin '94, '96 MBA 4) Rowing alumni Paul Mellinger '88, Pete McLaughlin and Sam Stevens '87 5) Matt Kilcullen, assistant vice president for athletic fundraising, with Doug Newbert '92 6) Trustees Jonathan Zung '86 and Joe Caruso '70 with President Catanese



San Diego Alumni Chapter Luncheon

In August, members of the San Diego Alumni Chapter gathered for lunch at Stone Brewing Bistro. Attendees included, from left: Nicole Shipley '12; Michael O'Hara '87; Chris Rosemeyer '04 and wife April; Chris Blatt '88; Claire Surrey-Marsden '04 and Chad Marsden '99 with son Hudson; Miguel Adao '89, Lisa Matthews '80; Mark Burdette '94 with wife Carolyn and sons Benjamin and Adam; and John Shipley. For more information about San Diego Chapter activities, email Miguel Adao at miguel.adao@hp.com.



International Reception



1) Ann-Marie Helgestad '12, left, with her family from Norway, visits with Ken Stackpoole, vice president of aviation programs and dean, College of Aeronautics 2) Mustafa AlSharif '08 M.S., '12 Ph.D., left, with a friend from UAE Qais AlSharif joined by Professor Muzaffer Shaikh and President Catanese 3) College of Engineering Dean Fredric Ham and Jerome Garcia '12 M.S. from Trinidad and Tobago 4) Anjhana Ramakrishna '12 M.S. (center) with her sister Bhagyashree Ramakrishna (left) who flew in from India and Bharati Belwalkar '11 M.S.

Gleason

NAME A SEAT

Campaign

"I invite all alumni to name a seat and leave our legacy in Gleason for future generations of Panthers, to support our alumni association and keep Florida Tech traditions alive. Join me and be part of the 500."

Tom Folliard Jr., Class of 1989
Chief Executive Officer, CarMax Inc.

alumni.fit.edu/gleasonseats

Aerial Observations

Alumni lead two visionary projects at Northrop Grumman

To look down, or look up? When soaring high above the Earth, that's a difficult question, given the spectacular sights in either direction. Thanks to two Florida Tech alumni, humankind will soon have tools offering a better view of both the heavens and the Earth. Jeff Grant '75 and Alan Metzger '81 each lead teams of Northrop Grumman engineers and scientists in the development of two highly anticipated projects.

Grant heads Northrop Grumman's Space Systems Division, the major U.S. contractor for the James Webb Space Telescope. When completed in 2018, the telescope will give scientists a glimpse of some of the oldest parts of the universe, answering questions that haven't even been asked. Conversely, Metzger leads Northrop Grumman's team developing a state-of-the-art airship, the Long Endurance Multi-Intelligence Vehicle (LEMV). The \$517 million project, slated for completion this year, will provide the U.S. Army with a new tool in defense initiatives in areas such as Afghanistan and the Middle East.

So how did two alumni land such prominent positions at one of the world's largest global security companies? Each has his own story, but a common element is the unique setting Florida Tech provides to its students.

"FIT provided not just a learning environment," said Grant. "We also learned about team building, communicating and stretching beyond the academics."

"Airships offer significant affordability with minimum fuel usage, less moving parts for increased reliability, and, due to the endurance capabilities, a lot less ground support personnel."

Alan Metzger '81



Above: Jeff Grant (third from left) is shown here during a ceremony Oct. 26, 2011 opening a new exhibit about the James Webb Space Telescope at the Maryland Science Center in Baltimore. Northrop Grumman photo by Marty Katz

Below: During a recent campus visit, Grant stopped by the lab of Stephen Wood, program chair for ocean engineering.



While majoring in engineering, Grant also participated in a number of extracurricular pursuits. As a member of the College Players (left), a resi-



Jeff Grant during a College Players production, circa 1974.

dent advisor and a member of a fraternity, Grant honed important interpersonal communication skills. Other activities—working at WFIT, as a projectionist at Gleason Auditorium and even performing repairs at the bowling alley that was under Evans Hall at the time—provided hands-on technical skills that would

prove valuable in the engineering field.

On the academic side, Grant touts many of his instructors' industry-oriented educational style.

"The adjunct faculty members were impressive because they were holding classes at night, but during the day, they were addressing these same problems in the real world," he said. "There was a realism, a pragmatism. You had academic rigor combined with the practicality of managing a complex program."

Grant transferred to FIT during his sophomore year, after beginning his studies at Clemson in his native South Carolina. As a young scuba diver, his passion for the ocean led to the pursuit of an ocean engineering degree, which he heard promised better job opportunities than other disciplines. His 21-year career at the CIA underscores that decision.

"My time at FIT served me well," he said. "I believe the entrepreneurial experience—as well as two years of Russian—gave me an advantage."

Ocean engineering proved useful to his current field as well. "You're designing things to go into a harsh environment—whether it's underwater or in space."

These days, Grant has the honor of leading a team in the development of the Webb Telescope—arguably one of the most important tools on the horizon for astronomers, physicists and astrophysicists. "Scientists are enabled by more precise instruments, combined with patient observation," he said. "There is a big change coming and it's exciting to be part of this huge international collaboration."

Closer to Earth, Alan Metzger's LEMV team will soon deliver a football-field-sized hybrid airship to the U.S. Army. As an "unblinking eye," capable of uninterrupted surveillance for more than three weeks at a time, the LEMV will first be used by troops in the battlefield in Afghanistan. Reaching heights up to 20,000 feet, the LEMV will provide unprecedented views of the Earth's surface, affording our military on the ground with a powerful new tool in the arsenal.

The LEMV is slated to deploy this fall to much fanfare from the U.S. Army.

"Airships offer significant affordability with minimum fuel usage, less moving parts for increased reliability and, due to the endurance capabilities, a lot less ground support personnel," explained Metzger. The LEMV is the first product in a new business area for Northrop Grumman, called the Lighter-Than-Air (LTA) market.

Metzger joined Northrop Grumman in 1988 as a member of the Joint STARS team and has advanced to greater supervisory positions, including chief engineer, program director and vice president. He credits his Florida Tech education with preparing him for his senior leadership roles.

"The professors were very knowledgeable, and many brought personal experiences into the classroom," he said. Listening to his own children describe their experiences at larger schools with as many as 600–700 students per class, he appreciates the Florida Tech advantage. "That was not my experience at FIT, and I think it had an effect on being successful in a team-oriented environment."



Alan Metzger during his college days, circa 1980.

Like Grant, Metzger took full advantage of Florida Tech's active student life, including varsity basketball, intramural sports and Greek Life, where he learned the value of teamwork and served as presi-

dent of the Chi Phi fraternity. These days, a number of Florida Tech alumni are part of his Northrop Grumman team, including **Paul Henkel '81**, lead avionics engineer; **Dave Dabrowski '97** MBA, vehicle engineering director; **Tim Atkinson '03, '07** M.S., software engineer; **Andrew Saffioti '07** M.S., communications engineer; **Pat Magee '01** M.S., contracts manager; **Mark Wengrofsky '97** MBA, vehicle engineer lead; **Melissa Marszal '05, '07** MBA, pricing analyst; **Dave Huddleston '83**, hardware design engineer; **Joe Durso '96** M.S., business development; **Denniel Brando '08** MBA, cost and schedule management; and **Jim Palmer-Smith '78**, lead systems engineer.

As alumni, Grant and Metzger embody the Florida Tech motto, "Ad Astra Per Scientiam," or "To the Stars through Learning."

Gretchen Sauerman

PANTHER BORN, PANTHER BRED, PANTHER PRIDE UNTIL I'M DEAD!



Panther Football debuted its uniforms during a pep rally that packed the Clemente Center on Sept. 14. The next day, the team took to the field at Palm Bay High School for the first intra-squad scrimmage.

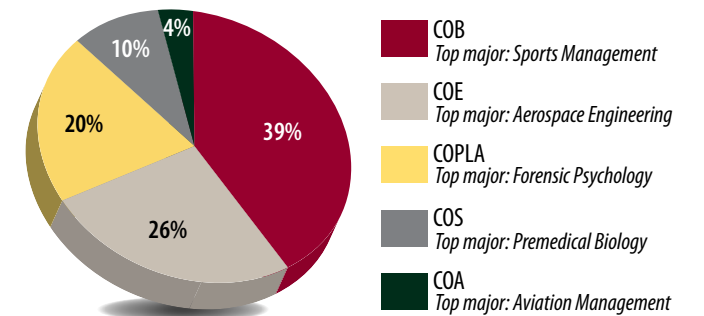
See more coverage at today.fit.edu



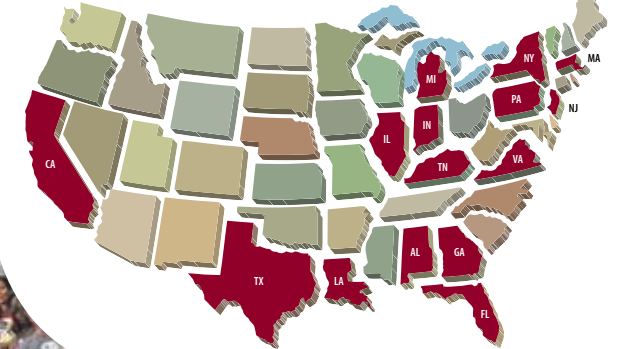
Players By the Numbers

of players **104**
Average height **6-0**
Average weight **210**

Breakdown by college



Representing 15 states, plus Jamaica and South Korea



EMERGING ENGINEERING:

Biomedical engineering has recently emerged as a discrete discipline. Closing the gap between engineering and medicine, the field has evolved from an interdisciplinary specialization to a field in itself. From applications in artificial organs and biocompatible prostheses to diagnostic and therapeutic medical devices such as clinical equipment and micro-implants, this joining of engineering with medicine offers potential to ease pain, produce more accurate diagnoses and, often, save time and money.

The discipline also tops *Forbes'* most valuable college majors list and is recognized as a growth field by the U.S. Bureau of Labor Statistics.

This fall, the College of Engineering introduces biomedical engineering degree programs at the master's and doctoral levels, joining the existing undergraduate program.

"Students are attracted to this field because of the endless possibilities for advancement in health care diagnostic methods, new monitoring and therapeutic techniques as well as the opportunity to make a difference in people's lives," said **Fredric Ham**, dean of the College of Engineering and Harris Professor of Electrical Engineering. "I have personally spent a significant portion of my research career working in this field in the area of biosensors."

Other Florida Tech faculty members have also been involved in biomedical-related research for many years. **Kunal Mitra**, founder of Florida Tech's biomedical research program, recently earned a patent for a laser-based skin cancer detection and treatment system. The system is designed to reduce or replace costly, invasive biopsies that detect skin cancer cells in a patient. It reduces diagnosis time by making results available immediately so that treatment may begin sooner.

"There is a sharp contrast in the absorption images of normal cells and cancerous cells, which can be detected using the short-pulse laser system. The system can image and display healthy cells to reduce the need for painful biopsies," explains Mitra.

Amir Sajjadi '12 Ph.D. has also harnessed the power of short-pulse lasers for biomedical engineering advances in the diagnosis and treatment of subcutaneous tumors. As part of his dissertation research, he developed a novel technology that uses a focused ultra-short pulse laser beam to precisely remove a tumor, which prevents damage to the surrounding healthy tissue. The technique allows for the removal of subcutaneous tumors without any incision or surgery. He also advanced a time-resolved optical imaging technique using short-pulse lasers by employing gold nanoparticles as viable contrast agents. "Combining these two techniques provides an unprecedented tool for early cancer detection and removal," he said.

Sajjadi's work has been published in three leading scientific journals, 12 peer-reviewed conference proceedings and has been presented at 15 conferences. "In this challenging research, I have been using a variety of experimental, computational and analytical methods. As a result, not only have I acquired a deep understanding of the physiology and cellular infrastructure of living

organisms, but also I have obtained extensive experience with some sophisticated experimental methods and computational techniques," he said.

Another alumnus forging opportunities in biomedical engineering is **Ronald Richardson** '84. Following undergraduate work in pre-professional biology at Florida Tech, he enrolled in the biomedical engineering program at Duke University's Pratt School of Engineering, earning a master's degree in 1992. His master's thesis was on encapsulating implantable biosensors. "It was very interdisciplinary. I combined biochemistry, physiology, electrical engineering, thermodynamics and more for the experimental design and analysis," he said.

Later, in the '90s, Richardson became a sort of "go between," translating needs and capabilities for clinical users and medical device manufacturers in the U.S. Army Medical Materiel Agency. As program manager for integrated clinical systems, he prioritized diagnostic imaging and clinical laboratory equipment requirements for fixed and field medical treatment facility capital investment equipment programs.

"In biomedical engineering, you work across boundaries and need a solid background and knowledge of almost all the engineering disciplines as well as biology and medicine," said Richardson. "Every problem presents unique and thought-provoking challenges. What's rewarding is that you ultimately contribute to health care delivery and extending and improving quality of life for millions of people."

By the Numbers

#1 Last spring, *Forbes* named the five most valuable college majors and cited biomedical engineering as No. 1. Calling it a "major that is most worth your tuition, time and effort," the article noted a starting median pay of \$53,800 and a mid-career median pay of \$97,800.

62% The U.S. Bureau of Labor Statistics projects the field's employment growth at 62 percent over the next decade—much higher than the average for all occupations.

(See www.bls.gov/ooh/architecture-and-engineering/biomedical-engineers.htm)

Karen Rhine

Paul Robertson '94:

On the Beat with a British Bobby



Before each shift, Paul Robertson '94 puts on his uniform—black cargo trousers, black shirt tucked under a black stab vest, handheld radio affixed near his left shoulder and a rig belt adorned with handcuffs, baton and pepper spray. Atop his head rests the traditional Custodian helmet (but only when he's on foot patrol, which is a rarity). Noticeably absent is a firearm.

Robertson is a police constable stationed at Bognor Regis, West Sussex, two hours south of London, along the coast of the English Channel. Unlike a U.S. police officer, he does not carry a gun. In fact, though trained for crowd control, demonstration situations and CBRN (chemical/biological/radioactive/nuclear) incidents, Robertson has never received firearms training.

"The main difference between police in England and police in the U.S. is obviously the fact that we are not armed as standard," explains Robertson. "We have armed units, but the ordinary Bobby carries an extendable baton and (in Sussex) pepper spray when out on patrol."

On the beat in his rural, seaside community, Robertson is part of the Neighbourhood Response Team, which deals with emergency situations as they are called in to 999 (the British equivalent of 911). Anything from a noise complaint to an assault, Robertson responds to the scene in his patrol car, which is not the famed black and white "panda" car, but a modern general patrol vehicle, or GP, that is silver with blue and yellow reflective decals.

Robertson has served on the force for eight years, and in that time, calls have spanned the mundane to the morose—a typical disorderly drunk to a badly beaten man "set alight." Common issues include drugs, "drink-related anti-social behaviour" and theft.

"The theft increase is a direct result of what is happening with finances, jobs, taxes, and the like in England. People can't or won't work, but still want the good things in life, so they feel as if they are entitled to take them from wherever they can," he laments.

Like the U.S., suspects are innocent until proven guilty. However, after being arrested on suspicion of a crime, British defendants are photographed and fingerprinted, and also have their DNA taken.

DNA sampling upon arrest is growing, but not universal in the U.S. The practice is law in 26 states, yet several legal battles wage questioning its constitutionality.

"I actually got to see and touch the torch—I have not washed my hand since!"

Paul Robertson '94



Robertson and wife Laurie (Hockridge) '94, and sons Harvie, 4, and Frankie, 6, holding an Olympic torch he made to celebrate the day the real torch passed through their town.

Outside of the day to day, Robertson has participated on some high-profile assignments in recent years. In the wake of the 2011 London riots, he spent two days on patrol in the north/northeast area of the city, where fortunately, "nothing of note happened." In July, he assisted at one of the change-over points as the Olympic torch made its way through the countryside on its path to the London games.

"I actually got to see and touch the torch," he says. "I have not washed my hand since!"

With his unusual application of an applied mathematics degree, Robertson jokes, "I'm not quite sure what inspired me to become a copper as I didn't have family or close friends who were emergency service personnel. I just failed to grow out of the 'I want to be a policeman/fireman/train driver' stage."

And, though he's not analyzing complex equations ("The only problem solving I really have to do is decide whether I am going to knock the door in or break a window!"), he is protecting and serving his community.

"The most rewarding part of the job is a 'thank you' from a victim of crime when we are able to quickly catch the person responsible and seeing their face light up with gratitude and relief. Obviously the worse the incident or more vulnerable the victim, the greater the feeling," he says.

At the end of a shift, Robertson's favorite duty is getting back home to his family—wife Laurie (Hockridge) '94, a physical education teacher at the local girls high school, and their two sons, Frankie, 6, and Harvie, 4.

"Being a copper is both an exciting and an exhausting job where you never know what the next call will bring," he says. "I'm proud to serve my community and help make the streets a safer place for my family."

Christena Callahan

Alumni Spotlight

Carlos Frade Garcia '09 civil engineering, '11 M.S. civil engineering
Construction Analyst at GMD, Grupo Mexicano de Desarrollo

Describe yourself in three words: Honest, Leader, Team Player

Describe your work: I started in the bidding department where we did a lot of cost estimating for projects like ports, harbors and airports, then I moved to the Investment Management department where I learned a lot about finances and how things work at a CEO level here in Mexico, then passed to the construction department where all the projects get done. Now I am a mini project manager, where I am in charge of a project we have at Veracruz and I am in charge of the logistics and interconnections of the project with all the construction going on over 735 km of highway.

Favorite Florida Tech memory: Buffalo Chicken Wrap on Thursday at the SUB with my friends

Little known fact: Been doing exercise all my life, from swimming and running to playing ice hockey

Notable achievement: Member of Phi Kappa Phi, the nation's oldest, largest and most selective all-discipline honor society

Hobbies: Traveling around the world, visiting theme parks and riding rollercoasters, waterskiing, playing ice hockey



Kelly Zingarelli '12 M.S. engineering management
Logistics Engineer, Lockheed Martin

Describe yourself in three words: Thoughtful, Quiet, Funny

Describe your work: I manage the logistical coordination and planning of hardware and potential future hardware in support of the U.S. government and its allies.

Favorite Florida Tech memory: Completing my last presentation/assignment and reflecting back on my learning experience at FIT

Little known fact: I served four years in the United States Marine Corps.

Notable achievement: Completing my master's in engineering management

Hobbies: Playing with my daughters and playing sports



What's your story?
Send thoughts to fltechtoday@fit.edu

Ken Lindeman:

The Lindeman for the Job

The Synergy of Sustainability, Scientific Research and Sage Scholarship is all in a day's work for Professor Ken Lindeman

Around campus, professor **Ken Lindeman** '80 has become known informally as “the sustainability guy.” It's a moniker of convenience. He is, after all, academic director of the sustainability minor, advisor to the Student Organization for Sustainability Action and one of Florida Tech's most tireless organizers of campus greening efforts.

Lindeman doesn't mind the label, he admits, as it certainly applies—at least to some degree. “But sustainability requires team efforts involving dozens of best practices that must be developed, implemented and maintained to last over time,” he says.

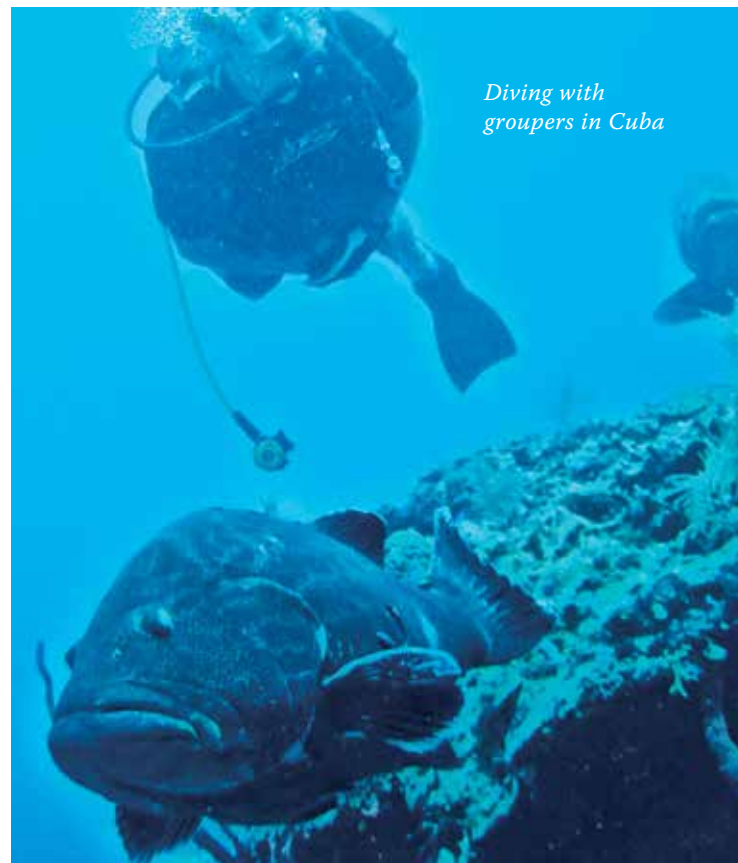
Yet, sustainability is just one of the threads in Lindeman's broad web of work. “He is also Florida Tech's online sciences director, consults frequently on Latin American coastal management issues, and is principal investigator on several research projects.

Most striking about Lindeman's office, tucked away in the woodsy, secluded home of the department of education and interdisciplinary studies, is his array of wonderfully messy bookshelves. Cramped with everything from academic tomes to paperback novels, texts on topics ranging from law to systems engineering to Eastern philosophy, it is clear the professor's interests are not only deep but diverse—a characteristic, he says, that has its pros and cons.

Certainly, Lindeman runs the risk of being called a jack-of-all-trades, master of none. But such a sobriquet couldn't be further from the truth. “I've worked to integrate diverse, interdisciplinary themes for decades. One of the goals has always been to become highly knowledgeable in seemingly distinct disciplines that can be unified to optimize public policy impacts,” says Lindeman, whose career is proof of an ability to do just that.

In 1989, Lindeman dove into the policy arena by starting his own coastal research nonprofit. It was an experience, he says, that forced him to learn the business, law and politics associated with science-based conservation actions. He also began to work on coastal issues in Latin America, with products that included pioneering conservation research in Cuba where he has co-authored seven journal articles and a book by the Smithsonian Institution

Press (among 50 journal articles and two books to date), assisted development of one of the largest marine park systems in the Caribbean, and taught a coastal management course in Spanish at the University of Havana.



Diving with groupers in Cuba



“Through these experiences, I got proficient at organizational start-ups and at translating science for decision-makers,” he says. “When you're doing policy work, it doesn't end with a journal article. That journal article is a new tool to try to move much larger systems that are often not designed to listen to science.”

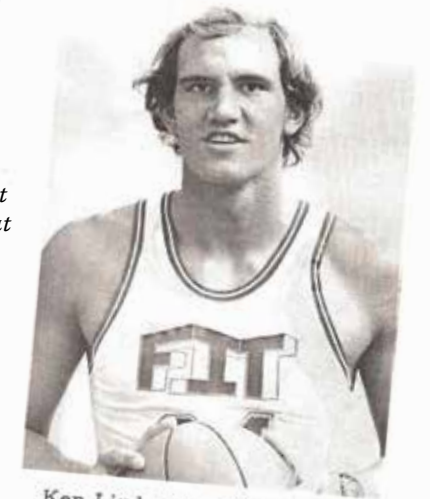
On the research side, Lindeman's work has focused on the developmental biology of marine fishes, coastal habitats, reef fisheries, coastal management and climate adaptation. He's currently part of a research team awarded a \$1.5 million grant from the National Oceanic and Atmospheric Administration (NOAA) Climate Services Office to make advanced regional predictions of sea level rise for six sites on the U.S. Atlantic and Gulf Coasts.

Lindeman characterizes the other principal investigators that make up the research team as “rocket scientists of sea level research.” And his role? “I'm the policy guy. It's my job to translate the research into products that are interpretable by non-scientists,” he says. To that end, Lindeman and his students are analyzing over 1,000 climate planning documents from around the globe and building a comprehensive summary of the most effective tools for transferring technical information on sea level adaptation to policy makers.

This past summer, Lindeman co-managed (with graduate student **Lauren Dame**) three workshops on Sea Level Rise Science and Adaptation at Woods Hole Oceanographic Institute in Massachusetts, Nags Head, N.C., and close to home in Melbourne, Fla. The workshops examined current sea level research and information needs among 100 representatives of federal, state and local agencies, academic institutions, nonprofit organizations and businesses.

So there's more to his work than campus sustainability.

Lindeman played basketball for the Panthers as an undergraduate student in biological sciences at Florida Tech.



Ken Lindeman - Freshman Forward - 6'6" - 205 lbs. Cardinal Newman H.S. H.S. Coach - Bucky McGann Home Town - Tequesta, Fla. Major - Marine Biology

But there is also far more to sustainability at Florida Tech than his efforts, he is quick to point out.

“I didn't make all this happen,” he says, in reference to the working list of campus sustainability projects he always keeps close at hand. “Significant sustainability actions were taken on campus before the academic program was launched. There are many champions across all colleges and various administrative components at FIT. I'm just one player.”

Lindeman speaks modestly about his role in the greater university effort toward a greener campus, but not about his passion for doing so. “I'm really into this. My wife will roll her eyes about how much I talk about the sustainability program,” says Lindeman, who is equally forthcoming about the high expectations he has set for himself and for students in the minor program.

“Our measure for success is that it all outlasts us,” he says. “The sustainable practices we implement around campus, the systems we initiate, the momentum of the academic program, these things can't end when a student graduates or when I get hit by a bus. That's how we know we've done things the right way—when they last beyond us.”

Ultimately, Lindeman views his research, teaching and campus sustainability efforts as intrinsically—and beneficially—linked. “There are no boundaries outside of time and funding,” he says. “Everything falls under the umbrella of education. My goal is to help assemble an array of exceptional young scholars working on primary issues that will foster more sustainable societies in the future.”

Andy McIlwraith



Love, Pride and an Opportunity

Former Panther embarks on first season as head volleyball coach



When **Amy O'Brien '09** reflects on the past few years, she vividly remembers her volleyball career at Florida Tech, graduating with a bachelor's degree in business administration and serving as an assistant volleyball coach for the Panthers.

Aspirations of earning an MBA followed her time as an undergraduate and those were met with a desire to continue her coaching career. One opportunity she didn't foresee occurred in May when she was named FIT's new head volleyball coach.

She follows in the footsteps of **Robin Chan, Fidgi Haig** and **Adam Thorstad** as FIT graduates who are currently a head coach of one of the Panthers' 21 sports.

"I was able to grow at FIT as a person and student-athlete," she said. "In my two years, I loved being a student, our campus, the athletic program and my teammates. To now be the head coach of the volleyball program is an honor."

As she begins her first season this fall, she will utilize some of the lifelong skills she learned as a student-athlete at FIT and her previous college, Florida State College at Jacksonville.

"As a student-athlete at an academically challenging school like Florida Tech, I learned how to manage my time," she said. "I majored in business, and I really think the business program helped me develop professionally."

Love for the Game

Volleyball is a sport ingrained in the 25-year-old from Holiday, Fla. Her mom and two sisters played it collegiately. She's been active in the game since childhood and has developed a passion for it. Although she no longer plays competitively, her love for volleyball remains.

"I live for volleyball," she said. "I always want to play even now after I'm done playing. I can't imagine not being involved in it. Stepping into the spring as the program's interim head coach and being in



control of the practices and games was such a rush for me. I knew coaching was what I wanted to do."

Now Introducing ... Your 2012 Panthers

O'Brien and the Panthers will play nearly 30 regular-season games this fall starting Aug. 31 and concluding Nov. 16. This summer, she's spent much of her time preparing for the fall season. Among the tasks she's crossed off her list are goals for 2012: play hard as a team, compete for NCAA postseason play, achieve a 3.30 team GPA, continue to make a positive impact in the campus and Melbourne communities and help promote the team's home games.

"It is awesome having packed stands," she said. "Our fans along with Pete the Panther, the pep band and cheerleaders help create a fun environment. If people haven't attended our games, I encourage them to come."

O'Brien prides herself on being energetic and a motivator. She's ready to take on the opportunity to be a head coach at the college level and is grateful for the support she's received from FIT's coaches and staff.

Player, assistant coach, head coach—she's another good example of how students can benefit from a degree at FIT.

Ryan Jones

A Dynamic Decade

A big proponent of collegiate athletics, President and CEO **Anthony J. Catanese** has added 11 sports to the university's landscape since his arrival in 2003. During his first year, he sparked the addition of five programs: men's and women's golf, women's soccer and men's and women's tennis.

All five sports have experienced success in their first decade. Notable achievements have ranged from an NCAA Division II national champion in women's golf to an NCAA South Region Championship, Final Four appearance and Sunshine State Conference Championship in women's soccer to more than 15 combined appearances in NCAA postseason play by all five sports.



FLORIDATECHSPORTS.COM

The official website of Florida Tech Athletics



FOOTBALL FACES

Gary Holmes
5-8, 180, Running Back,
Freshman
West Palm Beach, Fla.
(Seminole Ridge HS)
General Engineering



"I selected Florida Tech because of its great engineering program and to be part of a new football program. I'm looking forward to working with my teammates to put Florida Tech football on the map."

Rasheed Oliver
5-11, 220, Inside
Linebacker, Sophomore
Middleburg, Fla.
(Middleburg HS)
Mechanical Engineering



"I chose Florida Tech because I wanted to study engineering. It also seemed like a good opportunity to start a new football program, and I wanted to stay close to home. Since we're the first class, we have an opportunity to start a tradition."

Daniel Owen
6-2, 200, Quarterback,
Junior
Santa Clarita, Calif. (Los
Angeles Valley College)
Sports Management



"Coach Englehart recruited me when he was at Indiana State. Once I heard from the coaching staff, it was an instant fit. The location of the campus is amazing and it reminds me of California. Who knows how the first year is going to turn out, but I think if we put in the work, it's going to be a great success."

Surf Therapy

Half a world away, an alumnus finds solace in the surf



Last spring, Duane De Freese arrived in the Mentawai Islands, the second leg of an Indonesian surf expedition he describes as the trip of a lifetime—physically, emotionally and spiritually. After a week of travel, a week in Bali and a 75-mile boat ride across the Mentawai Strait off the west coast of Sumatra to Karamajet Island, he was set to spend 11 days at the Kandui Surf Resort.

Each morning, a boat ferried him to the many surf breaks near the island. On day two, that break was called Hideaways.

As he waited for his set, his wet hair glistened in the sun. The salt breeze kissed his face. The taste of iron was bitter on his lips—a reminder of the errant board that met his nose earlier that day. The swell approached. He paddled hard. The crystal blue Indian Ocean rolled out before him as he cascaded down the wave. Then, a momentary misjudgment and the thunderous surf pounded him into the shallow coral reef below, sending him tumbling beneath the powerful force.

Overcome. Just like the emotions he was there to escape.



The “senior citizens surf tour” guys—De Freese, center, with University of Rhode Island surf buddy, Mike Ryan, right, and Rhode Island transplant, Curt Schwarz, left, who has been living full-time in Bali for over a decade.

(far left) De Freese respecting local Hindu traditions while sporting a T-shirt from LongDoggers, a Brevard restaurant owned by alumni, John “AJ” Burr, who attended in the ’80s and Al Steinginga ’89. The shirt was a big hit with the local surf crew, said De Freese.



(Left to right) In happier times ... De Freese and his wife Vicki at the Doctors, Lawyers, Weekend Warriors charity surf contest at Sebastian Inlet. The couple were avid supporters of the event.

Traditional umas provided luxury living for Kandui guests on the island.

De Freese dancing with the Mentawai Shaman

Local Mentawai artist, Atman, carved a traditional Hawaiian alaia surfboard out of solid mahogany for De Freese.

Kandui transportation to the surf breaks.

In 2011, De Freese experienced the unthinkable. His wife Vicki, his best friend of nearly 26 years, passed away.

Without Vicki—his “soul mate”—De Freese tumbled along under a sea of grief. Uncertain of what to do. Uninterested in where to go. The immediate attention to financial and legal responsibilities distracted him temporarily, but soon the sleeplessness, sadness and overwhelming emptiness intensified. He endured what he calls a “reverse midlife crisis”—cutting his long hair, removing his characteristic earrings, selling the sports car he and Vicki had enjoyed as a couple. He forced himself to seek out a self-described “attitude adjustment.” It began with a road trip to Rhode Island and ended half a world away in the Indonesian archipelago.

“A life-long love of the ocean shaped many, if not all, of my life and career decisions,” explains De Freese ’81 M.S., ’88 Ph.D., a marine scientist and avid surfer.

He chose his universities (undergraduate study at the University of Rhode Island followed by graduate work at Florida Tech) as much for their marine reputations as for their marine proximities. In each new home, he was plugged in to the area’s surf community. He built his own boards, surfed competitively and formed a network of lifelong friendships—friendships that would be key to finding peace again.

That process of finding peace began by acting on advice from Vicki.

“Just before her death, she was really pushing me to get more involved in surfing again,” recalls De Freese, who had dedicated less time to the sport as life and career responsibilities grew. “She understood that surfing always made me happy.”

Determined to regroup, the Indian Atlantic resident decided to revisit his surfing roots in Rhode Island. The trip rekindled decades-dormant friendships and led to a more epic adventure with a former college and surfing buddy, Mike Ryan. They called the month-long expedition “the senior citizens surf tour” during which DeFreese would celebrate his 58th birthday.

“I spent the next eight months in focused preparation—working out every day, surfing when I could, eating right and buying lots of surfboards to find the quiver of ‘magic boards’ to carry on the journey,” he says.

In April 2012, that journey began.

Sleeping in “umas,” the thatched houses built in the traditional Mentawai style by local Mentawai craftsmen, the surfers awoke each day to a verdant, tropical paradise. A labyrinth of white sand paths connected the resort outbuildings and led to coquina sand beaches where the ebb and flow of the sea sent ghost crabs scurrying. A canopy of palms and seagrapes framed the view of perfect turquoise barrels rolling in the distance.

“The Mentawai Islands are one of the most consistent surf destinations in the world,” says De Freese. “Exposure toward the southern Indian Ocean provides high-quality surf on shallow coral reefs that will give you the best wave of your life or a proper beating. I got both!”

In fact, the wipeout at Hideaways was so intense that De Freese experienced a blunt impact trauma.

“I had a bruise down my entire left leg, fractured the T12 vertebrae and damaged two lumbar discs in my lower back,” says De Freese. “It ended my surfing, but not the fun. It was such an unusual

place to be and so exquisitely beautiful you couldn’t help but enjoy it.”

Fortunately, the island experience proved as stimulating as the waves. Unlike other remote tourism venues that import staff as well as guests, Kandui is staffed by Mentawai locals, guaranteeing an authentic travel experience.

“You very much got a sense of the culture,” explains De Freese.

He danced with the Shaman, the traditional medicine men of the islands who travel down from their jungle dwellings to visit the resort. Lean, tattooed and sun-etched, the Shaman wear colorful headdresses, woven loincloths and croton leaves, palm fronds and other tropical foliage as they dance, drum and chant. Then, willing guests, like De Freese, are invited to taste sago palm larvae (grub-like insects considered a delicacy of the islands).



Surfing Panthers

The Florida Tech Surf Team is ranked first among collegiate surf teams in Florida and finished sixth in the nation this summer at the National Scholastic Surfing Association (NSSA) National Interscholastic Championships in Dana Point, Calif. The team also earned a place within De Freese’s estate plan through a generous bequest designation.

“It’s exciting that Florida Tech is ranked in the top 10 in the nation, and it’s just another accolade for the university as it develops both academically and in its cultural and athletic opportunities,” says De Freese. “The school has really evolved since my time there. It’s a pleasure to watch and whatever I can do to help, I will.”

To learn more about legacy gift planning at Florida Tech, contact Shelley Johnson at (321) 674-8079 or shelley@fit.edu.



Each year we honor trustees, alumni, faculty, staff, students, parents, corporations, foundations and other friends in the Honor Roll of Donors. This year's Honor Roll of Donors consists of those who gave to the university between May 1, 2011 and April 30, 2012. We salute all who remembered Florida Tech during the 2012 fiscal year.

Trustees

Raymond A. Armstrong Sr., M.D.
 Richard N. Baney Sr., M.D.
 Nathan M. Bisk
 Harry E. Brandon
 Joseph Caruso Sr.
 Anthony J. Catanese, Ph.D., FAICP
 Andrew M. Clark, Ph.D.
 Charles C. Clemente
 Dale A. Dettmer, J.D.
 Phillip W. Farmer
 Joseph M. Flammio, CFP, CIMC
 Steven T. Freeman
 Ruth E. Funk
 John T. Hartley
 Henry G. Heflich Jr.
 Allen S. Henry, Ph.D.
 Bjornar K. Hermansen
 Erik E. Joh, Esq.
 Richard P. McNeight
 William R. Muns
 Robert L. Phebus Jr.
 William C. Potter, Esq.
 Travis Proctor
 James E. Pruitt Jr.
 Kenneth P. Revay, CM
 Michael Scafati
 Edward W. Scott Jr.
 Scott J. Seymour
 John L. Slack
 F. Alan Smith
 Elizabeth J. Swann
 James W. Thomas
 Thomas E. Vice
 Jonathan B. Zung, Ph.D.

Legacy Society

Individuals who have included Florida Tech through estate planning via a will, trust arrangement or insurance policy compose The Legacy Society.
 Raymond A. Armstrong Sr., M.D.
 Raymond A. Armstrong Sr., M.D.
 Richard N. Baney Sr., M.D.
 Juanita O. Brooks, Psy.D.
 Barbara A. Calcagni
 John A. Calcagni
 Anthony J. Catanese, Ph.D., FAICP
 Sara Catanese

Connie Chiles-Cooke
 David L. Clayton
 Dan Dahle
 Duane E. De Freese, Ph.D.
 Bobbie Deering
 Richard F. Douglas
 Clarke O. Fowler
 Walter J. Gatti
 J. Carey Gleason
 John T. Hartley
 Marjorie C. Hayes
 James A. Hersperger
 Deborah Heystek
 Lois A. Kennedy
 Marilyn C. Link
 John B. McLellan
 Thomas E. McNamara
 Hortense H. Nunn
 James M. Ortega
 Geraldine E. Phipps
 Francisco J. Picornell
 Patricia M. Picornell
 Dale L. Pierce, Esq.
 Lawrence P. Pollack
 F. Alan Smith
 Linda Vopicka
 Jean P. Walton
 Dirk S. Brady
 Toni Brady
 B. W. Koeppel

Galaxy Society

The Galaxy Society consists of Florida Tech's most elite group of donors who have given at least \$1,000 to the university over the course of one fiscal year. All Galaxy Society members listed below met the requirements of membership as of April 30, 2012.

Hercules

(\$5,000+)

Raymond A. Armstrong Sr., M.D.
 Amvrossios C. Bagtzoglou
 Dan Balda
 Carolyn V. Baney
 Richard N. Baney Sr., M.D.
 Nathan M. Bisk
 Harry E. Brandon
 Wendy Brandon
 Barbara A. Calcagni
 John A. Calcagni
 Heidi Cambata

Nelson K. Cambata
 Joseph Caruso Sr.
 Lisa Caruso
 Anthony J. Catanese, Ph.D., FAICP
 Sara Catanese
 Connie Chiles-Cooke
 Charles C. Clemente
 Steve Cooke
 Amy Daly
 Luke J. Daly
 Pamela Dettmer
 Dale A. Dettmer, J.D.
 Anna Dongari-Bagtzoglou
 Jeanne A. Farmer
 Phillip W. Farmer
 Joseph M. Flammio, CFP, CIMC
 Thomas J. Folliard Jr.
 Erin Freeman
 Steven T. Freeman
 John T. Hartley
 JoAnn Heflich
 Henry G. Heflich Jr.
 Donald J. Hendrick Jr.
 Sandra Henry
 Allen S. Henry, Ph.D.
 Mara Hixon
 Joseph M. Hixon IV
 Henry E. Holzbach
 Sally E. Holzbach
 John R. Hopkins
 Susan Hopkins
 Joan Joesting-Mahoney, Ed.D.
 Victoria Joh
 Erik E. Joh, Esq.
 Michelle Laham
 James S. Laham, CPA
 Christine P. Lance
 Howard L. Lance
 Matthew V. Mahoney, Ph.D.
 Carole K. Maul
 George A. Maul, Ph.D.
 Mary H. McCay, Ph.D.
 T. D. McCay, Ph.D.
 Michael J. McGinnis
 Sandra McGinnis
 Richard P. McNeight
 Theresa McNeight
 James T. Meyer
 JoAnn H. Morgan
 Don D. Morse
 Susan M. Morse
 Lucie B. Muns
 William R. Muns
 Dione L. Negroni-Hendrick

Diane N. Newman
 Denwood B. Parrish
 Linda C. Parrish
 Deborah B. Phebus
 Robert L. Phebus Jr.
 Richard W. Price
 Teresa Proctor
 Travis Proctor
 Patricia D. Pruitt
 James E. Pruitt Jr.
 Kenneth P. Revay, CM
 Norma C. Roth
 William D. Roth, PA
 Shay Rowe
 Barbara D. Roy
 William G. Roy, USN Ret.
 Michael Scafati
 Patricia Scafati
 Cheryl S. Scott
 Edward W. Scott Jr.
 Renee L. Sekersky-Zung
 Katherine T. Seymour
 Scott J. Seymour
 Mahesh Shah
 Laurie Siegel
 Paul J. Siegel
 Judith D. Simonds
 Robert J. Simonds
 Jack A. Sinclair
 Martha W. Sinclair
 Edmund Skellings
 Louise N. Skellings
 F. Alan Smith
 Sharon Smith
 Joan H. Sorensen
 Scott T. Sorensen
 Delores O. Spearman
 Guy M. Spearman III
 Donald Seiford Sr.
 Joseph Caruso Sr.
 Fred E. Sutton
 Meredith M. Sutton
 Elizabeth J. Swann
 Jim T. Swann III
 James W. Thomas
 Monica A. Thomas
 Jean E. Tucker
 Michael J. Valletutti
 Renee Valletutti
 Kimberly S. Vice
 Thomas E. Vice
 Elizabeth T. Whittaker
 Kenneth A. Whittaker, CPA
 Katherine Baum
 J. C. Baum, Ph.D.
 S. Ann Becker, Ph.D.

Centaurus

(\$2,500–4,999)

Henry S. Abercrombie
 Zelda E. Abercrombie
 Jo-Ellen Ames
 Marguerite H. Arnold
 Steven J. Arnold
 Willie J. Arnold
 Casey J. Baker
 Donna Baker
 Mary E. Baldwin, CFP
 James L. Cairns, Ph.D.
 Carol M. Craig
 John Craig
 Duane E. De Freese, Ph.D.
 Joanne G. Diaz
 Michael Diaz, M.D.
 Leasha D. Flammio-Watson
 Mary B. Folliard
 Rachel Fornes
 Leah Hellemann
 Leslie M. Hellemann
 David W. Kempf
 Gale M. Kempf
 Lawrence B. Kenkel, Esq.
 Mary Beth B. Kenkel, Ph.D.
 Jane Kirschenbaum
 Malcolm R. Kirschenbaum, J.D.
 Allen H. Neuharth
 Barbara L. Peery, Ph.D.
 Julie Pinkerton
 Scott G. Pinkerton
 Gregory H. Pollock
 Holly R. Pollock
 Wendy L. Potter
 William C. Potter, Esq.
 Douglas C. Rauscher
 Holly M. Rauscher
 Amy E. Rossetter
 David E. Shein, Esq.
 Isaac M. Silver
 Gregory Watson

Andromeda

(\$1,000–2,499)

Dorothy A. Allen
 Barbara Ausherman
 Vernon K. Ausherman
 Gabriella Baika
 Douglas F. Bailey, SDS, Ph.D.
 Richard E. Barrett Jr.
 Katherine Baum
 J. C. Baum, Ph.D.
 S. Ann Becker, Ph.D.

Brian M. Blenis
 Debra S. Blenis
 Mary E. Bonhomme, Ph.D.
 Raymond F. Bonhomme, Ph.D.
 Stuart J. Borton
 Rodney B. Bowers, Ed.S.
 Ritva T. Bowman
 Thomas E. Bowman, Ph.D.
 Sarah V. Bragdon
 Clifford R. Bragdon, Ph.D.
 Patricia H. Briel
 Ernest M. Briel Jr.
 Bob Briggs
 Fayette Brown
 Laurie Brown
 George B. Browning
 Jeannine B. Browning
 Glen R. Bupp
 Joy K. Calcagni
 Eric C. Camirand
 Kelly C. Camirand
 Ernie L. Cantelmo
 Emma F. Carey
 Max R. Carey, USAF Ret.
 Ahmed V. Charles
 Chris M. Chen
 Lily Chen
 James B. Clark
 Mary S. Clark
 Andrew M. Clark, Ph.D.
 Daniel A. Copeland
 Brian S. Crane
 Lydia S. Crane
 Richard T. Creech
 Ernest C. Euler
 Tina Euler
 David A. Fassino
 Sandra Fiedler
 Tristan J. Fiedler, Ph.D.
 Robert R. Fisk
 Melissa A. Flammio-Clark
 Clarke O. Fowler
 Charles T. Fulton, Sc.D.
 William K. Gabrenya Jr., Ph.D.
 Mark Gardinier
 Dorothea Gatti
 Walter J. Gatti
 Linda V. Gilbert
 Peter J. Gilbert
 Martin E. Glicksman, Ph.D.
 Michael S. Grace
 Tanya K. Grace
 Donna Greenawalt
 Tony E. Greene

Eileen C. Hamme
 Gary L. Hamme
 Catharina D. Haynes
 Craig Haynes
 Barbara Hering
 Bjorg M. Hermansen
 Bjornar K. Hermansen
 Deborah Heystek
 Nancy N. Higgs
 Patrick C. Higgs
 Yvonne H. Hoyman
 Charles W. Hoyman Jr.
 Dorothy S. Johnson
 Ralph A. Johnson
 Royce Jones
 Donna Joyal
 Paul M. Joyal
 Kathleen Kane
 Frank L. Kinney
 Sandie Klaver
 Deborah D. Koenig
 Edward C. Koenig III
 Suzanne L. Kozaitis
 Samuel P. Kozaitis, Ph.D.
 Karen Kulonda
 Dennis J. Kulonda, Ph.D.
 Jennifer J. Latici
 Rosemary G. Layne, Ph.D.
 Robert J. Leader
 Frank R. Leslie
 Jerry Leslie
 Marilyn C. Link
 James T. Mallon
 Jose A. Martinez-Diaz
 Shirley J. Mataxis
 Elinor S. McKee
 George A. Medlin
 Barbara B. Milford
 Luella C. Mills
 Sharon Mischker
 Frances J. Warkowski, Ed.D.
 Gary L. Watson
 Ellen K. Webbe
 Frank M. Webbe, Ph.D.
 Michael K. West PE, Ph.D.
 Timothy J. White
 Dennis W. Wilt
 Donna F. Wilt
 John G. Windsor Jr., Ph.D.
 Karen R. Windsor
 Carlos Woodward
 Eric W. Worden
 Maricel M. Worden
 Annette J. Wright
 Terri L. Wright
 Dean E. Wright, USA
 Martha J. Young

Robert M. Renfro
 Gloria Reynolds
 James K. Reynolds
 John E. Reynolds Jr.
 Dianne M. Rhodes
 Donald G. Rhodes, M.D.
 Mark V. Rice
 Sandra D. Rice
 Marcia L. Ridenour
 Jim L. Ridenour, USAF Ret.
 John K. Roach
 Julia R. Roach
 Bryan R. Roub
 Judith E. Roub
 Danny L. Sale
 Martha L. Sale, D.B.A.
 Beverly H. Sanders
 Mark S. Sanders
 Gretchen A. Sauerman
 Mary Jane Schnoor
 Douglas M. Schuler, PE
 Ann H. Sepri
 Paavo Sepri, Ph.D.
 Chad C. Shoultz
 Michelle L. Shoultz
 Jolann M. Simciak
 Walter C. Simciak
 Margaret Simpson
 John L. Slack
 Jessica L. Snook
 Susan P. St. Onge, J.D., MBA
 Thomas H. St. Onge
 Susan Stackpoole
 Kenneth P. Stackpoole, Ph.D.
 Kirk Stowers
 Kathy A. Turner
 Richard L. Turner, Ph.D.
 Cynthia Ville
 Jeff Ville
 Yue-Eng Wang
 Frances J. Warkowski, Ed.D.
 Gary L. Watson
 Ellen K. Webbe
 Frank M. Webbe, Ph.D.
 Michael K. West PE, Ph.D.
 Timothy J. White
 Dennis W. Wilt
 Donna F. Wilt
 John G. Windsor Jr., Ph.D.
 Karen R. Windsor
 Carlos Woodward
 Eric W. Worden
 Maricel M. Worden
 Annette J. Wright
 Terri L. Wright
 Dean E. Wright, USA
 Martha J. Young

Ad Astra

Ad Astra is a lifetime giving society that consists of individuals who have given a minimum of \$10,000 to Florida Tech.
 Bobbye S. Acopian
 LaNell Armstrong

Raymond A. Armstrong Sr., M.D.
 Marguerite H. Arnold
 Willie J. Arnold
 Barbara Ausherman
 Vernon K. Ausherman
 Steve Badolato
 Jane B. Baggs
 Joseph W. Baggs Jr.
 Amvrossios C. Bagtzoglou
 Douglas F. Bailey, SDS, Ph.D.
 J. R. Bailey, Ph.D.
 Mary Anne Bailey
 Casey J. Baker
 Donna Baker
 Juanita N. Baker, Ph.D.
 Richard H. Baker, Ph.D.
 Charles A. Baldwin
 Elizabeth D. Baldwin
 Carolyn V. Baney
 Richard N. Baney Sr., M.D.
 Sherri Barron
 Cathy Benes
 Jeffrey P. Benes
 Gail Biddix
 Patrick T. Biddix
 Thomas E. Biddix
 Nathan M. Bisk
 Amelia S. Blake
 R. M. Blake, J.D.
 Ritva T. Bowman
 Thomas E. Bowman, Ph.D.
 Edith Boyd
 Joseph A. Boyd
 Harry E. Brandon
 Wendy S. Brandon
 James R. Brenner, Ph.D.
 Kimberly A. Brenner
 Dorothy Brett
 Joseph J. Brett
 Ernest M. Briel Jr.
 Patricia H. Briel
 Theresa P. Brown
 Hans P. Bruckner
 Jill A. Bunker
 Stephen P. Bunker
 Eugene A. Buzzi
 Judith H. Buzzi
 Corky Calhoun
 Dee Dee Calhoun
 Heidi Cambata
 Nelson K. Cambata
 Bino Campanini
 Trish M. Campanini
 Ernie L. Cantelmo
 Joseph Caruso Sr.
 Lisa Caruso
 Anthony J. Catanese, Ph.D., FAICP
 Sara Catanese
 Eugene S. Cavallucci
 Rebecca S. Cavallucci
 Andrea M. Chase
 Scott G. Chase
 Lois K. Chell

Paul L. Chell
 Connie Chiles-Cooke
 Andrew M. Clark, Ph.D.
 G. D. Clark
 Janet E. Clark
 Mary S. Clark
 David L. Clayton
 Theresa Clayton
 Charles C. Clemente
 Mary B. Colson
 Wendell H. Colson
 Steve Cooke
 Daniel A. Copeland
 Denise Copeland
 Eileen P. Corelli
 John J. Corelli
 Carol M. Craig
 John Craig
 Jocelyn W. Creech
 Thomas G. Culbreth
 Eva H. Dahle
 Amy Daly
 Luke J. Daly
 Martin E. Dandridge
 Stephanie Dandridge
 J. J. Davis
 Dennis M. Davitt
 Michael Della-Cioppa
 Sara N. Demetree
 Thomas B. Deeneen
 Dale A. Dettmer, J.D.
 Pamela Dettmer
 Julie Dimond
 Keith A. Dimond
 Joseph R. DiPrima
 Penella J. DiPrima
 Anna Dongari-Bagtzoglou
 Marsha A. Duncan
 Freida Elrod
 Leon R. Elrod
 Charles Entenmann
 J. N. Fairbanks
 Jeanne A. Farmer
 Phillip W. Farmer
 Karen L. Ferguson
 Charles M. Fisher
 James L. Fisher
 Leilla Fisher
 Joseph M. Flammio, CFP, CIMC
 Terri L. Flammio
 Leasha D. Flammio-Watson
 Mary B. Folliard
 Thomas J. Folliard Jr.
 Rachel Fornes
 Evelyn Foster
 Warren F. Foster Jr.
 John J. Francey
 Erin Freeman
 Steven T. Freeman
 Ruth E. Funk
 June A. Gaarder
 Robert P. Gaarder
 Gopal Gadodia
 Kalpana Gadodia

John Gallo
 Dorothea Gatti
 Walter J. Gatti
 Pamela A. Gatto-Gallo
 Anne Gebbia
 Dominick Gebbia
 J. Carey Gleason
 Barbara V. Glover
 Joseph H. Glover III
 William N. Goodwin
 Constance Gordon
 Dudley Gordon, USA Ret.
 Catherine J. Gourlay
 George J. Gourlay
 William A. Harr, D.P.M., PA
 John T. Hartley
 Fleur De Lys Healy
 Henry G. Heflich Jr.
 JoAnn Heflich
 Betty L. Henderson
 Wilbur C. Henderson
 Donald J. Hendrick Jr.
 Allen S. Henry, Ph.D.
 Sandra Henry
 Bjorg M. Hermansen
 Bjornar K. Hermansen
 Lisa Hernacki
 Thomas R. Hernacki III, PE
 Joseph M. Hixon IV
 Mara Hixon
 Barbara Hobin
 James C. Hobin
 A. T. Hollingsworth, Ph.D.
 Jacqueline E. Hollingsworth
 Marylyn Holmes
 Thomas G. Holmes
 Henry E. Holzbach
 Sally E. Holzbach
 John R. Hopkins
 Susan Hopkins
 Jean C. Howlett
 Kenneth G. Hurto
 Pauline E. Hyvonen
 Seppo Hyvonen
 Joan Ingram
 Rodger L. Ingram
 Donald A. Jacobs
 Iris D. Jacobs
 Joan Joesting-Mahoney, Ed.D.
 Erik E. Joh, Esq.
 Victoria Joh
 Dorothy S. Johnson
 Ralph A. Johnson
 Darcia Jones-Francey
 Donna Joyal
 Paul M. Joyal
 Susan Jurgens
 William K. Jurgens Jr.
 Edward H. Kalajian, Ph.D.
 Priscilla A. Kalajian
 Eloise L. Kalker
 Alvin L. Kaltman
 Gwendolyn S. Kaltman
 Cem Kaner, Ph.D.
 Regina M. Kaufmann

Sharon C. Kelly
 Lawrence B. Kenkel, Esq.
 Mary Beth B. Kenkel, Ph.D.
 James G. Kennedy Jr.
 Patricia Kennedy
 Annette Kessell
 Kirk W. Kessell
 Jane Kirschenbaum
 Malcolm R. Kirschenbaum, J.D.
 Herman J. Koch
 Marybeth H. Koch
 Karen W. Kramer
 James S. Laham, CPA
 Michelle Laham
 Helga Lamb
 Vincent S. Lamb Jr.
 Timothy L. LaMunyon
 Christine P. Lance
 Howard L. Lance
 Catherine D. Lane
 Douglas C. Lane
 Gay Lane
 Nelson P. Lane
 Celine Lang, D.P.A.
 Gary F. Lang
 A. W. LaRose
 Margaret LaRose
 Janice Leong
 Richard W. Leong Jr., D.D.S.
 Frank R. Leslie
 Jerry Leslie
 Marilyn C. Link
 Ann L. Luke
 Matthew V. Mahoney, Ph.D.
 Elyse T. Manley
 T. R. Manley, Ph.D.
 Shirley J. Mataxis
 Carole K. Maul
 George A. Maul, Ph.D.
 Ruth McCartney
 Mary H. McCay, Ph.D.
 T. D. McCay, Ph.D.
 Forest R. McDowell
 Jamie McDowell
 Michael J. McGinnis
 Sandra McGinnis
 Elinor S. McKee
 Richard P. McNeight
 Teresa McNeight
 H. K. Mergler
 Luella C. Mills
 William H. Mills
 Paula G. Molnar
 Thomas R. Molnar
 Charlotte B. Moore
 Richard B. Moore
 Don D. Morse
 Susan M. Morse
 Lucie B. Muns
 William R. Muns
 Nedgy Nazon
 Weyni A. Nazon
 Dione L. Negroni-Hendrick

Class of 1971

Lona H. Bell
Dale A. Dettmer, J.D.
David J. Egli
Walter G. Fredrickson
Ronald J. Gaspar
Charles W. Hackney
Daniel E. Hinton Sr.
Gary S. Lagerloef
Ernest G. Lautzenheiser
W. M. Manduke
Robert P. Mathewson
Harold K. McGinnis
William P. McLachlen
Billy W. Melton
Paul M. Merry
Victor J. Palmieri
William C. Potteiger
James E. Preissner
Robert E. Richardson
Arthur L. Sheldon
James D. Simmons
Stephen J. Spencer
Kenneth D. Watts
Craig A. Wilson

Class of 1972

Vernon K. Ausherman
Joseph T. Bolos
Michael J. Bruckner
Chris A. Campbell
William H. Creed Sr., USA Ret.
George A. Downey Jr.
Richard C. Dragani
James F. Duncan
Michael J. Fladmark
Edward D. Gerber
Thomas Gutierrez
Gary L. Howman
Paul M. Joyal
Philip J. Kielkucki
David A. Lyons
Thomas L. Powers
James E. Pruitt Jr.
Arnold E. Rowland
H. J. Samolowicz
Jerry H. Sansom
Douglas M. Schuler, PE
Thomas J. Stauffacher
Emil L. Stevens
James W. Thomas
Jeremy G. Tyler
Keith J. Uniacke
Peter E. Winter

Class of 1973

George M. Ammon
Terrence R. Applebee
Stephen T. Black
John B. Brodie
Gary S. Bushko
Max R. Carey, USAF Ret.
Joseph Caruso Sr.
Thakor K. Champaneria
Joseph M. Chapman, USA

Hayward C. Ducharme
Mary A. Emmons
Edward F. Farrell
Robert R. Fisk
David L. Force
George W. Gering III
Marc Hawes
Henry G. Heflich Jr.
Gary S. Kaminski
David P. Klementowski
Edward C. Koenig III
Richard A. Lackey
Michael T. Maiuri
Harold O. Martin III
John F. Meagher
Joyce M. Miller
Robert A. Moore
Charles M. Philyaw
Jackie P. Russell
David R. Schechter
Ronald E. Sinclair
Mark E. Trout

Class of 1974

Steven J. Agid
Roger A. Amende, USA Ret.
Casey J. Baker
Robert M. Ball, AAE
Russell J. Ballagh
Larry G. Bennett
James S. Bothwell
Willard R. Bright, USA
Richard P. Burns
Ernie L. Cantelmo
Roland L. Devore
William E. Dietz
Bruce Dzadek
Joseph E. Eckelman
Roy S. Ellzey
Jeffrey J. Geuther
Steve S. Gilbert
Bert A. Goodman
Robert W. Goodrich
Leonard P. Habig Jr.
Douglas R. Horde
James R. Hughes
Gregory B. Hunter
Rosann Kryczkowski
William D. Kutac
Stephen J. Lewis
Mark C. Lyons
William W. McGaw
Phil G. McGill
Stuart Mendelsohn
William B. Merrill
Justin E. Moore
Francisco B. Newman Jr.
Richard J. Noble, Ret.
Robert L. Phebus Jr.
Pierre L. Quintana
Mahendra R. Shah
Dean L. Smehil, NOAA
Samuel O. Smith
Terry L. Smith
Donald A. Stewart

Fred W. Styer
Laurilee Thompson
Robert J. Varley
Raymond A. Wilkins
Class of 1975
Philip V. Abbott
A. R. Anzolin
Colleen S. Benner
Carl K. Blank
Eric L. Botnick, CIH
John F. Bowyer
James A. Carleton, CM
Lynn E. Cooper, PE
Theodore L. Dockstader, USA

Jim E. Downey
Paul S. Horvath
Anthony Kiuoussis
Fred T. Komoroski
Barbara B. Larson
Alexis S. Loo, USN
Robert J. Lorenz
Jeffrey R. Lucas
Edward C. McCarthy
Norman A. McDaniel
Charles E. McShane Jr.
Marc H. Michalovsky
Lawrence R. Mortland
Kathryn L. Pazera
Stephen O. Peffer
Lawrence M. Perna
John P. Ramee
William C. Roche
J. A. Smith, Ph.D.
Richard M. Smith
Thomas F. Stewart III
Duane M. Stinchfield
Dale E. Thompson
Dennis O. Wissinger
Daryl Yee Litt

Class of 1976

Erick R. Abadie
Jimmie G. Anderson
Richard A. Ankener
Stephen E. Bankert
Jeffrey P. Benes
Ronald A. Buanno
William P. Bukevicz
Paul S. Capaldo
Dale E. Darr
Harold R. DeFrieze
Douglas M. Dunbar III
Walker L. Evey
Gloria M. Franklin
John W. Fringer
Susan C. Fuller
Ronald H. Hix
Ruthanne E. Hoppe
James M. Huntington
William K. Kirwin
James E. Lacy Jr.
James A. Lowry Jr., USAF Ret.
Eric C. Mallen

Dean M. Mayreis
Daniel C. Mestayer Jr.
Paris Michaels
Raymond A. Miles
Jim L. Mills
Steven F. Pachan
Anita L. Parisi
Dale L. Pierce, Esq.
Allyn R. Saunders, CPM
Jeffrey L. Schultes, AAE
Gregory J. Smith
Kenneth J. Spangler
Judith B. Strother, Ph.D.
Albert A. Sykes
John W. Thiltgen
John E. Tozer, DMD
John A. Valente
David L. White
John K. Wilkins
Darrel A. Williamson, USA Ret.
Alan G. Wilson
Dean E. Wright, USA
Jeffrey T. Young
Michael R. Young

Class of 1977

Mark S. Aniello
Richard L. Ay Jr.
Michael J. Benik
Georgia E. Binns Hanington
Raymond A. Bole
Vincent J. Brocato Jr.
Billie K. Brown
Rufus F. Clanzly, USA
Daniel M. Cohn
Gail A. Connery
Thomas L. Crossen
Jimmy L. Duncan
Gregory S. Eaglin
John M. Finn II
Eugene A. Flohre
Joseph J. Grasela, USA Ret.
Larry E. Gunnin Sr.
Stephen G. Hausrath, M.D.
Anthony X. Hoyer
Mark D. Koontz
Jennifer J. Latici
Mark S. Lewis
John S. MacLeod
Edward B. Manley
Cynthia R. Maris
Lowell McKinster, USA
Karla H. Micka
Larry M. Ondic
Charles J. Reilly Jr.
Kenneth A. Sawyer
Gerald D. Smith
Larry L. Sutton
Brian R. Tevlin
Oscar L. Torres Jr.
John S. Twaddell III
Bardo H. Von Korff

Class of 1979

James T. Baker
Vicki T. Bannon
Vincent A. Bernhard
Steven T. Butterfield
Daniel A. Copeland
John K. Corney
Carol L. Dewitt
James B. Evetts, PE
Thomas W. Feick Jr., USA Ret.
Tyler R. Foster
Roger J. Gilmore
Lesley C. Gray
T. J. Harvey
Deborah Heystek

Class of 1978

David W. Arnold
Harold C. Arrich
Valerie A. Barber
Kenneth J. Beyda
Nelson K. Cambata
Deborah D. Charnasky
Michael N. Clark
James R. David
Ronald C. Davis
Jeffrey B. Dean
E. M. Dubois
Richard A. Englebach
Katharine L. Felson
Evan C. Futterman
William N. Gordon
Michael S. Gottfried
Joseph W. Holladay, USA
Larry E. Jarvis
Steven E. Johnson
Lucien F. Keller Jr.
Cathy M. Lascara
Mark E. Lintz
Jerry L. McCollum
Michael J. Mengel
Charles W. Millican III
William M. Modrak
Thomas L. Mohny
William R. Muns
Felix O. Onwurah
Alan R. Ostendorp
William B. Perry
William P. Reynolds Jr.
Paul A. Rice
Robert M. Rivell
Bruce E. Roberts
Arthur E. Rogers
Mary Jane Schnoor
Ferdinand P. Schoedinger III
William J. Selawsky
Jimmie C. Simpkins
Norman D. Snyder
Donald J. Stepnicka
Raymond M. Walker
Bob B. Washam
Patrick F. Webb
Richard A. Wright

Catherine M. Hoffman
Paul J. Hughes
Louise L. Jenkins
William K. Jurgens Jr.
John P. Langley
Chester A. Murphy III, USA Ret.
Thomas E. Neugebauer
Dennis P. Nolan, PE
Naomi C. Petteway
David C. Pfeifler
Deborah Pinkston
William J. Riley
Jeffery T. Sample
Mary E. Schaefer
John T. Schmidt
Kenneth E. Shepard
Mary A. Tierney
Edward J. Valickus
Michael E. Wheeler
J. Bradford White
Class of 1980
Matthew E. Asai
Cynthia A. Babich
Stephen G. Bailey
John A. Bester
Dale E. Boger
Douglas W. Bradshaw, CPA
Carlos J. Bumanglag
Michela A. Coffaro, ACSW
Isabella M. Englebach
Clarke O. Fowler
Gigi H. Savona
Karen S. Griswold
Lawrence O. Hall
Richard A. Halprin
Frank R. Harris
Franklin C. Heim
Anita L. Hudson
Kevin L. Jarvis
Wilton L. Jordan II
John F. Kelly
Mukesh K. Khattar
Andrea L. Krikorian
Thomas J. Kunhart, USA
Kenyon C. Lindeman
Mathias L. Margut
William E. Mayer
Susan D. McKay
Jesse J. Merry
David W. Munion
Steven L. Murray
Richard L. Myers
Randy J. Norman
Enrique Osorio-Ortiz
Donald C. Parsons
Jose M. Pinto Jr., Ph.D.
Alan L. Prestwood
Lisa C. Saluck
John E. Schweppe
Michael G. Shawcross
Paul T. Siefert
Phillip M. Spencer
Timothy D. Sutton, USMC

Robert D. Turner
James J. Vega
Earl Watrous
Ronald R. Willey
Class of 1981
Dale M. Abrahamson
James F. Augspurger
Carl H. Bowles Jr.
Gilbert F. Byrd Jr.
Rex B. Cheskaty
Duane E. De Freese, Ph.D.
Daniel T. Doyle
Kathleen J. Extegoien
Gregory A. Fox
Marvin H. Hauptman
Walter S. Hersing
Sharon L. Hixon
Pamela D. Hobson
Leonard G. Jacoban
William K. Kovac
Timothy P. LaBo
Victoria G. Lockard
Paul J. Mester
David B. Meyer
Charles G. Millstein
Robin C. Perry
Anthony L. Peters
Mark S. Peterson
Chester J. Piolunek Jr.
Norman D. Polansky
Alan L. Quimby, PE
Stanley Salek
Gigi H. Savona
Ahmed I. Vanya
Allen R. Walter
William W. Widjaja
Class of 1982
David M. Atwood, USA
Joseph Baumer
Johannes H. Benink Jr.
Jaime Birmaher Ghitis
John K. Bonner
Robert F. Bradley
Lloyd E. Brow Jr.
Patricia L. Cascioli
Madelyn F. Cole
Clara S. Davis
Paul B. Davis
Michael S. Dean
Edward P. Donovan
Paul J. Dronka, USA
Serge F. Fourcand
Charlotte M. Fuller
Garth B. Gattrell
Cynthia Gleisberg
Diane D. Hayward
Jessie J. Hewett Jr.
John J. Higgins
Elmer R. Humbert
Robert O. Johnson
Timothy R. Kain
Philip A. King
Robert K. Lange
Joan S. LeMosy

Scott M. Lewit
Mary R. Lidkea
Gaeton A. Long
Donald V. Lusk
Barbara A. Malley
Susan E. McDonough
Phac V. Nguyen
Alan R. Parris
Curt A. Peterson
Kenneth P. Revay, CM
Patricia A. Roskos
Stephane L. Ross
Bruce N. Shibles, Esq.
Robert Trujillo
Barry F. Weiss
James L. Wright
Kathleen C. Yhip
Class of 1983
Mary E. Baldwin, CFP
Bernard A. Barnes
Timothy J. Clancy
Joseph J. Cordery
Andrea G. Deratany-Blasy
Katherine M. Detchemendy
Michael E. Feustel
Wayne E. Fried
Kathleen R. Gillin
Henry D. Goodell
Catharina D. Haynes
Robert M. Heath
Lori A. Hentschel
David C. Hill
Koji Hirano
John M. Ingwersen II
Ralph M. Johns
Carolyn D. Kinebrew-Bosa
Laurie M. Kuestner
Brian J. Lally
George E. Lytle
Robert W. MacQuinn
Elaine S. Mattair
Alan K. Meeker
Jorge C. Mesquita
Michael J. Morrison
Dennis P. Porter
Donna M. Porter
Ravi K. Ravikumar
Bonita R. Reveles
Claudia M. Roberts
Bruce E. Schwab, Ret.
Paul C. Setcavage
John Sodano
Janet E. Stone
William E. Tolson, USA
Peter B. Turner
John A. Van Workum
Terrence P. Vernes
Daniel Wagman
Ronald K. Wilson
Andrew J. Ziegler
Eric A. Zillmer
Class of 1984
John B. Allen Jr.
Frederick W. Anderson

Lynn G. Biggs
Michael W. Daly
Lisa A. D'Arcy
Claudia F. Dennis
Franco T. Diaz Jr.
John C. Dutton
Tim D. Edsell
Darrell P. Faulkner
William E. Ferguson, USA
James R. Gough
Jerry S. Harrington, Ret.
James C. Hobin
Donald G. Hooper
Karyn A. Hopp
Larry L. Hunter
Sharon C. Kelly
Howard R. Klein
Mark L. Kogle
Donald S. MacGregor
Andrew L. Massey
Amy E. Mazurek
Sandra E. McAllister
Floyd D. McLamb
William B. Moon
Robert D. Moore
Stephen R. Murphy
Robert R. Pellegrini
Amy M. Pierce
Suzanne M. Preston
Mark V. Rice
Gregory M. Robinson
Raymond F. Sablynski
Robert M. Schatzel
Michael E. Sears
Kapil D. Singh
Steve M. Stevens
Robert G. Stewart
Wallace J. Tubell Jr., USA
Ina E. Usher-Gough
Lloyd I. Walker Jr.
Donna F. Wilt
Rebecca L. Youngman
Douglas J. Zwach
Class of 1985
Stephen R. Alexander
Leida G. Alicea
Barbara J. Andersen
Gerardo A. Batista
Mary T. Bayers-Thering
Carolyn M. Beale, USA Ret.
James L. Blackford
James P. Byous
Allen D. Christensen
Gregory A. Corrigan
Francis A. Cossaboon
Francene Cucchiara
Patrick Debrosse
Suzanne B. DiBartolo
Jacqueline J. Dunn
Kathleen A. Durkin
Carol A. Ellis
Andrew B. Fitzgerald
Joseph P. Francis
Donald D. Freeman

Lawrence W. Galloway
Robert M. Garceau
Gaye D. Gargiula
Robert J. Harren
De'Edra F. Haynes
Oksana Z. Heck
John V. Hennessey
Kevin J. Hess
Warren M. Jones
Suzanne L. Kozaits
Jim B. Kuo
Garling A. Looney
John E. Mattson
Neil W. Meischeid
Thomas J. Morrison
Alan G. Myers
Fadi E. Nassar
Robert E. Neild
William E. Nelson
Keith E. Nessler
Patricia M. Picornell
Sairam N. Pokala
Lawrence P. Pollack
Sandra D. Rice
Carl P. Ritter
Jeffrey R. Seivwright
Bruce A. Sellars
Mary M. Simone
Rosemary L. Smith
Clay M. Tappan
David L. Tellet
Cheryl L. Thacker
James M. Torpey
Sharon J. Trepiccione
James R. Wilder
San-Hwai Yeh
Class of 1986
Quirino A. Balderas
Douglas T. Banks III, USA
Daniel A. Bertossa
Jeanne L. Bertossa
Mildred G. Betancourt
James S. Colletto
Timothy J. Cowles
Kathy Z. Crandall
Barbara DeSimone
Theodore S. Dunkle
Katharine P. Dunlevy
Olumide O. Emuleomo
Eblan Y. Farris
Victor A. Ferran
Jack W. Fountain
William L. Geary Jr.
Susan M. Goodrich
David M. Harrah
John Heer III
Andrew J. Holmes
Roberta M. Horne
Sara B. Howze
Paul D. Kempin
John A. Leonard
Stephen F. Lynch Jr.
Janet J. Merrill
Herbert D. Miller, USA

Andrew J. Paryzek
Mark D. Perry
Angela M. Ramsey
Bradley D. Reed
Janet Robertson
Debora J. Russell
William A. Ryan
Christel C. Saylor
Michael D. Schubert
Dwight W. Schwendeman
Paula M. Sind-Prunier
Elaine M. Stark
Richard A. Tebeau Jr.
Larry Ward, USNR
Barbara E. Warren
Andrew E. Wheeler Jr.
Jack R. Wierengo Jr.
Lisa Winterich
Lawrence M. Worley
John D. Zimak
Bernd W. Zoller, USA
Jonathan B. Zung, Ph.D.
Class of 1987
Roberto Alvarez
Amvrossios C. Bagtzoglou
Kim B. Bozik
Kim N. Byrner
Robert D. Cason
John F. Deperro
Robert E. Filer, USA
Jon Fredas, USN
Murali K. Gadde
Dana L. Hansen
William G. Harris
Robert W. Herbig
Rose Ann Jones
Janice M. Krogh
Susan LaGreca
Shin-Fang C. Lee
Joy B. Lurken
Paula Macomber
William P. Manly
James D. Mikell
Thomas E. Moldenhauer
Audrey D. Myers-Bernstein
Sara S. Noll-Clements
Bruce E. Przygocki
Timothy P. Rot
Robert T. Rowe
Jeffrey M. Schiff
Dayle R. Stevens
Vicki H. Trimbach
Nelvin E. Tyler Jr., USA
Frank D. Walker
Kathleen M. Wojtas
Kenneth B. Yancey
Jules A. Yasuna
Class of 1988
Colleen S. Amgott
Rafael Arroyo
James F. Barrett
Kevin Barry
Jean-Claude J. Benard
Joseph C. Bernier

Eric Burhans
Paul E. Campbell
Tirumala V. Chaparala
Craig J. Crump
Michael B. De Zearn
Herbert M. Dove
Matthew E. Fitzgerald
Edith L. Gallagher
Gregory L. Gaydosh
Gregory O. Heath
David M. Hone, USN
Arun Krishnamurthy
Thomas W. Krystock
Michael S. Lindsey
Wayewn Mao
Bradley M. McCain
Paul C. Mellinger
David B. Montgomery
Mary L. Murphy
Donna M. Oddy
Nancy A. Orbell
Michael J. Perry
Theresa L. Poppell
Nathern B. Priddy
James O. Quinn
Christine E. Ridgeway
Wayne A. Savold
Andrew C. Schelich
Richard D. Schwark, USA Ret.
Todd R. Shier
Jonathan P. Tate
Carol A. Venice
Joseph L. Walden, USA
Shelba S. Wetheral
Shelbe S. Zimmerman
Class of 1989
John J. Ackerman
Roger D. Appel
John D. Bard, Ph.D.
Carmen L. Barragan-Pascual
Thomas E. Barthel
Kevin T. Connelly, USA
Bruce R. Crain
Jeffrey J. Cyr
Denise M. Devito
Holger Findling
Thomas J. Folliard Jr.
Barbara S. Furtney
John P. Gagliardo
Gregory M. Grimes
Joachim R. Gruber
Albert M. Hagopian, PE
Douglas R. Healey
James L. Jacobs
Dale S. Johnson
Suzanne M. Kahn
Scott D. Kerr
Deborah A. Koufas
Chris W. Kuntz
Joseph J. Lavorgna
Milton K. Lewis
Megan M. Mellinger
Ken S. Monroe

Claire P. Wurmfeld, CPA	Gail R. Azia	Cathy S. Bernard	Sarah V. Bragdon	James L. Cairns, Ph.D.	Marie B. Chertok	Theodore J. Cox III	James F. Delly	Gale W. Edington	Andrew L. Forman	Michael Gindling	Sheila L. Haire
Grace R. Wylie	Deborah Babcock	Clay E. Bernichon	Charles V. Brand	Joy K. Calcagni	Carol A. Chiaverini	Marc A. Craddock	Sharon L. Dely	Joseph H. Edney	Diana Forman	Ellen B. Ginevra	Wendy K. Haley
Feng Yang, Ph.D.	Chevon Baccus	Edward H. Berrios	Susan Brand	Jonathan T. Calderon	Connie Chiles-Cooke	Carol M. Craig	Joseph J. Deluca	Patricia Edney	Leslie R. Forster	George Girardo	Stephen L. Hall
Charlotte M. Young	Tracy H. Bacon	Jason A. Berry	Wendy S. Brandon	Tim D. Calvin	Karen L. Chin	Darrell R. Craig Jr.	Marie T. Deluca	Warren C. Edwards	Diana R. Foster	Wendy Gironda	Susan J. Hall
Peggy A. Zinsmeister	James Bacsik	Mary Berry	Marci Bratman	Eric C. Camirand	Cedric J. Ching	John Craig	Charlotte Demchock	Rena Elder-Foley	Lisa A. Fournier	Barbara V. Glover	John N. Hamilton, Esq.
Friends	David Badolato	Roy Berry	Faye Braud	Kelly C. Camirand	Linda J. Chittick	Patricia V. Craig	Linda L. Deperro	Ernestine H. Ellington	E. Keller Fox	Joseph H. Glover III	Patti F. Hamilton
Ahmed Abdelkhalek	Steve Badolato	Cheryl A. Bester	Dawn J. Bray	Paul Campanini	Seonae Cho	Lydia S. Crane	Timothy D. Deratany	Robert N. Ellington	John J. Francey	Sylvia E. Godbehere	Tim Hamilton
Debra Abdo	Debra D. Baker	Paula Bewerse	Nancy R. Bredemeyer	Jean A. Campbell	Christine J. Chura	Rebecca Crawford	Lorraine H. Deremer	Carolyn J. Elliott	O. J. Francoeur	Claude Godwin	Cathy Hammers
Hyla J. Abelmann	Donna Baker	Barbara K. Bilbo	Stanley W. Bredemeyer	Jean F. Campbell	Kimberly J. Church	Walter R. Crawford	Daniel DeRosa Jr.	Laurie A. Ellison	James E. Franklin	Olga Godwin	Gordon Hammond
Henry S. Abercrombie	Juanita N. Baker, Ph.D.	Kathryn K. Billings	Donna D. Brennan	Meredith J. Campbell Britton	Marcia Ciaccia	Richard T. Creech	Richard J. DeRosa	Mahmoud A. El-Tobgui	Anne K. Fray	Lisa A. Goff, DMD	Larry Hanes
Zelda E. Abercrombie	Richard H. Baker, Ph.D.	Donald Bittar	William T. Brennan	Debra L. Campos	Jeanne M. Ciavarelli	Michael B. Crews	Sharon Derussy	Sandra L. El-Tobgui	Joann M. Frederick	Richard A. Goglia	Ralph Hanes
John B. Abernathy	Aristine L. Bakke	Thomas A. Bixby	Edward J. Brennick	Thad A. Campos	Jennifer C. Cirillo	Rebecca B. Crews	Ernest A. Desantis	Elizabeth M. Engel	John Frederick	Nanialel M. Golden, M.D.	Richard P. Haney
Nancy P. Abernathy	Alice Baldwin	Tina D. Bixby	Laura H. Bresette	Diego Canals	Doris L. Clanzly	Annie Cribb	Isabelle C. Desantis	Carrie Englehart	Beverly J. Frederking	Eileen F. Goldsmith	Jennifer Hanley
Benjamin L. Abramowitz	Rick Baldwin	Amy Black	Wayne Bresette	Bernadine Cann	Joanne L. Clark	Terrence A. Cronin	Pamela Dettmer	Francis Erdell	Edward F. Frederking	Candy K. Goldstein	Mark R. Hanley
Irene Abramowitz	Emanuel Balkin	Amelia S. Blake	Susana Bria	Josephine Capozziello	Mary S. Clark	Gloria Cronnelly	Alan Diamond	Josephine A. Esposito	Carol L. Freeman	Doris Golindano	Carl Hanselman
Maria E. Abravaya	Lorraine R. Balkin	R. M. Blake, J.D.	Patricia H. Briel	Marie C. Cardona	Roy F. Clark	Christopher A. Cronwell	John A. Dias	Ernest C. Euler	Erin Freeman	Cathy Gondek	Jennifer A. Hanselman
Lyle M. Adams	Macon C. Ballard	Ralph J. Blanchard	Mary Broderick	Donald L. Carey	Jacqueline Clarke	Carol L. Cross	Georgette W. Diaz	Tina Euler	Willie H. Freeman	Carolyn A. Gonyea	Phyllis E. Hansen
Myrtle L. Adcock	Trina L. Ballard	Patricia M. Blanzly	Betty S. Brody	Emma F. Carey	Roger G. Cleaver	Mary L. Crouch	Joanne G. Diaz	Arthur F. Evans III	Desiree R. French	Kelly Goodlick	Nancy Harper
Bonnie J. Addis	Brian E. Baney	John A. Blasy	Raymond J. Brokos	Geraldine E. Carey	Priscilla A. Clendenin	J. Peter Crumpacker	Michael Diaz, M.D.	Helen M. Evans	Gail French	Dianne M. Goodwin	Regis A. Harrington
Jean M. Allan	Holly M. Baney	Amy J. Blazejowski	Jocelyn L. Bronson	Janet M. Carl	Stephen Clendenin	Marjorie Cuffy	Peter Diaz, USAF Ret.	John H. Evans, PA	Jean A. Frese	Brandy Gordon	Rina M. Harrington
A. S. Allen	Constance Banks	Brian M. Blenis	Phillip M. Bronson	Loragno Carliss	Ambra Clerc	Mary J. Cullen	Robert P. DiBella	Ruth S. Evetts	Paul Friedland	Melissa A. Gordon	John Harris
Diane T. Allen	John A. Banks	Cathy A. Blimline	John Brophy	Mary F. Carlson-Cleaver	Cheryl Clermont	Beverly Culver	Jeffrey S. Dick	Judi K. Eyles	Shirley R. Friedland	Alan Gottlieb	Krista Harris
Dorothy A. Allen	Thomas J. Bannon	William H. Bloom	Patricia A. Brotsch	Marie E. Carlucci	Julia A. Close	Edward R. Cumm	Edward DiGiovanni	Don A. Facciobene	Elaina R. Friesel-Garvin	Carol A. Goyette	Lizabeth L. Harris
John M. Allen	Edward Baranowski	Alicia Bocuzzi	David F. Brown	Barbara C. Carmody	Bradford Clow	Cathleen M. Cummings	Maria DiGiovanni	Michael S. Fagan	Robert A. Fritz Jr.	Gregory Grabka	Michael Harris
Jonathan Allen	Marlowe Baranowski	Barbara A. Bockman	David D. Brown	Carol Carney	Patricia Clow	James Cunningham	Fredrick L. Dillen	Ellen C. Fagan Pryor	Americo Frocione	Jeryl Graham	Ty Harris
Theresa L. Allen	Pamela M. Bard	Samuel L. Bockman	Fayette Brown	Dan Carney	Harry W. Coates III	William Cunningham	Nancy B. Dillen	Daniel P. Faherty	Jean J. Frocione	Judith D. Graham	William R. Harris
Betty B. Allison	Brian Barfus	Samuel L. Bogdon	Kimberly A. Brown	Darwin Carpenter Jr.	Sandra V. Coates	Margaret Currie	Joseph R. DiPrima	Beth-Anne Fairchild	Anne G. Fuller	Mary L. Graham	Cornelius Harrison
Kelly Allison	David Barin	Susan M. Bogdon	Laurie Brown	Brigid T. Carr	Katherine P. Cobb	David Curry	Penella J. DiPrima	Sonia Fakatselis	W. J. Fuller	Thomas E. Grandmaison	Dawn Harrison
Richard G. Alper	Patrick K. Barker	Betsy M. Bohmer	Lawrence D. Brown	Helen Carroll	Mark C. Cobb	Joseph R. Cwikla	Dearing S. Disney	Barbara Falasiri	Ruth G. Furnald	James I. Granger Sr.	Julie Harrison
Toni Alper	James H. Barlow Jr.	Harry J. Bohmer	Lucy C. Brown	Jacqueline Carroll	Deborah A. Cohen	Priscilla B. Cwikla	Sharon Dixon	Jafar Falasiri	June A. Gaarder	Nicole Gravina	Valerie Harrison
Mei Alsop	Michael A. Barrella	Dawn H. Bohne	Susan M. Brown	Lorelei M. Carroll	Beverly J. Cole	Donna Dalton	Tommy Dixon	Jane Farmer	Robert P. Gaarder	Cynthia A. Green	Robert N. Hartman
Judith Altug	Marcia C. Barrere	Hugh M. Bohne	Yoshie Brown	Tamara Cartagena	James H. Coleman	Erich A. Dalton	Kimberly Dixon	Jeanne A. Farmer	Grace Gabrielsen	Sharon Green	Tamara P. Hartnett
Lionel Amanfu	Richard P. Barrere	Alan G. Bonn	Arthur Browning	Delmer J. Carter Jr.	Kenneth L. Coleman	Amy Daly	Frederick H. Dobbs	Marilyn A. Fashano	Kris K. Gadde	Donna Greenawalt	Kathleen E. Hasling
Jo-Ellen Ames	Richard E. Barrett Jr.	Patricia Bonn	George B. Browning	Elaina M. Carter	Linda G. Coleman	Luke J. Daly	Sherrill R. Dobbs	David A. Fassino	Joseph R. Gagnon	Desmond J. Greene	Robert Hassol
Theodore R. Amgott, M.D.	Michael J. Barry	Fin B. Bonset	Jeannine B. Browning	Irene M. Carter	Mary L. Coleman	Donna A. Dambro	Marilyn Dobson	Julie Featherston	Owen C. Gallagher	Kristen R. Gregor	Robyn Hattaway
David Anderson	Nancy C. Barth	Jennifer A. Borboroglu	Gloria L. Brubaker	John C. Carter	Michael J. Coleman	Joe Dambro	Roger W. Dobson	Alex Ferguson	Janet Gallardo	Betty A. Griffin	Judith N. Hays
Virginia E. Anderson	Robert W. Barth	Prodromos G. Borboroglu	James E. Brubaker	Karen T. Carter	Kathleen A. Collatos	Michelle Damiano	Paul M. Dombroski Jr.	Judith A. Ferguson	Pepe Gallardo	Virginia M. Griffin	Greg Heaton
George W. Anderson, Jr	Marjorie A. Bartok	Joan R. Borders	Gerald W. Bruner	Marilyn Carter	Anthony Collazo	Carol M. Dana	Ann L. Downey	Valerie Fernandez	John C. Gallo	Warren O. Griffin	Stacey Heaton
Carolyn T. Angell	Henrietta Bartunek	Dianne Borde-Sutherland	Nina A. Bruner	Natalie K. Carter	Sherry Collazo	Michael L. Dana	Kathleen D. Doyle	Tammy J. Ferrando	John Gallo	Priscilla P. Griffith	Erma Hebert
Diane Angell	Katherine Baum	Stuart J. Borton	Laurette M. Bryan	Lisa Caruso	Bruce E. Collins	Christie Daruwalla	Miriam S. Doyle	Charlotte J. Ferrante	Lynne A. Galton	Nita Grisham	Joanne E. Hebert
Edgar L. Angell	Jennifer Beach	Rose M. Bouclier	Bette Buck	Kathryn Casey	Marion E. Collins	Gloria O. Dash	Judith A. Driesen	Barbara Ferrell	David W. Gamblin	Shirley N. Griswold	Nancy Hebert
John Angell	Diana Beacham	Joyce L. Boudrie	Keith H. Buescher	Genevieve Cason	Mary Collins	Brian W. Davidson	Barbara M. Dubrosky	Kristie A. Ferriell	Patricia N. Gamblin	Martha Groble	Autumn Hedelund
Michael E. Angier	Gail B. Beagley	Larry Boudrie	Lila R. Buescher	Robert D. Cason	Palmer W. Collins	Elaine F. Davis	Gail B. Dunbar	Linda J. Ferris	Linda M. Gandee	Andrew Grogan	JoAnn Heflich
Jane Annunziata	Richard C. Beagley	Janice F. Bouk	Rich Burak	Leslie J. Castaldi	Paula J. Collins	Gene Davis	Helen M. Duncan	Timothy P. Ferris	Pauline Garcia	Carol A. Grupe	Thomas Hefner
Nadine Antaillia	Vickie L. Beard	Carlene Bowden	Eleanor E. Burchfield	Peter P. Castello	Claudia R. Colon	Judy E. Davis	Jay C. Duncombe	Eugene M. Fetner	Katheryne E. Garvey	Margaret Guest	Clara L. Hellemann
Diana Apetz	Chris Beaulac	F. J. Bowdish	Harry P. Burchfield	Liza M. Castellon	Christopher L. Combs	Mary L. Davis	David W. Dunn	Suzanne F. Fetner	William S. Garvin	Abigail Gunther	Leah Hellemann
Jeffrey S. Araj	Sarah Beaumont	Jean Bowen	Lillian Burgo	Mauricio J. Castellon, M.D.	Anne Cominos	Paul B. Davis	Midge Dunn	Brenda S. Fettrow	Barbara Gasper	Clarence H. Gunthorpe	Leslie C. Hellemann
Richard Ardizone	Georgia R. Bechtel	Jonathan G. Bowering	Barbara Burkhardt	Jan Castillo	Judith F. Commerford	Susan M. Davis	Pamela B. Dunn	John Feuerstein	Carole M. Gatto	Lucy A. Gunthorpe	Leslie M. Hellemann
Cathleen Armstrong	Mary L. Beckmann	Kevin Bowler	Deanna E. Burner	Kim Catalano	Corrinne A. Conn	Beth Davison	Peggy Dunn	John D. Fielding	Michael V. Gatto	Julie A. Guralchuk	Patricia M. Hemphill
LaNell Armstrong	Mary C. Beecher	Ritva T. Bowman	Richard C. Burner	Mary Catalano	Greg Connell	Maria De Jesus Cabrera	Paul Dupre Jr.	John D. Fielding	Pamela A. Gatto-Gallo	Clifton L. Gurr	Donald J. Hendrick Jr.
Sharon Armul	Constance Beehler	Thomas E. Bowman, Ph.D.	Richard C. Burner	Shawn Catalano	Stephen F. Connelly	Gretchen A. De Jong	Christine Dutcher	Madeline A. Fielding	Rosemary Gebhardt	David M. Figowy	Donald J. Hendrick Jr.
Brett Atwood	Lloyd Behrendt	Charlie Boyd	Richard C. Burner	Sara Catanese	Edward W. Conroy	Deborah J. De Roeck	Dave Duthie	David M. Figowy	Pamela E. Geist	Mark A. Figura	Sandra Henry
Steve Audino	Mary F. Behrendt	Cynthia G. Boyd	Richard C. Burner	Maria Catania	George M. De Roeck	George M. De Roeck	Judith Conroy	Jo Ann Filipe	Nancy E. Gennaro	Jo Ann Filipe	Edward Hensley
Audrey Auld	Martha L. Bekkum	Joel E. Boyd, Esq.	Richard C. Burner	Emily C. Cato	Patricia M. Deakin	Patricia M. Deakin	Judith Conroy	John R. Filipe	Helen M. Gustafson	John R. Filipe	Patricia C. Hepner
Barbara Ausherman	Emily Bell	Suzanne M. Boyd	Richard C. Burner	Eugene S. Cavallucci	Renee Decator	Renee Decator	Mary M. Consoli	John J. Dwyer III	Marybeth B. Gustafson	John J. Dwyer III	Carole A. Hepper
Joann Auteri	Scott Bell	Kaye K. Boyer	Richard C. Burner	Rebecca S. Cavallucci	Robert L. Cook Jr.	Robert L. Cook Jr.	Carol G. Cook	Sharon K. Dwyer	Carol Guthrie	Sharon K. Dwyer	Salvatore J. Hepper
Carol Avona	Bill W. Belt	Karen Boyle	Richard C. Burner	Nicholas M. Cefaratti	Phyllis J. Cooke	Phyllis J. Cooke	Mark Decotis	Bobbie L. Dyer	Marlane Gutzwiller	David W. Dyer	Coralee E. Herbst
Marian B. Awwad	Mary P. Bender	Daniel Brackett	Richard C. Burner	Christopher P. Celella	Steve Cooke	Steve Cooke	Harry L. Deffebach III	David W. Dyer	Curtis Guy	Steve Dyer	Randall L. Herbst
Anna M. Ayer	Mandi Bennett	Mary C. Brackett	Richard C. Burner	Helen M. Cerda	Roxanne L. Cooley	Roxanne L. Cooley	Kim P. Deffebach	Steve Dyer	Roxanne Guy	Kent A. Dykhous	Betty N. Herget
Stanton W. Ayer	Mary S. Bennett	Peter Brackett	Richard C. Burner	Helen M. Cerda	Eric Cooper	Eric Cooper	Helene C. DeGroodt-Belt	Steve Dyer	Jerome Haberman	Windy Dykhous	Barbara Hering
Kevin Ayers	Timothy N. Bent	Jacqueline L. Bradley	Richard C. Burner	Stephen E. Chalmers	Felicia P. Cooper	Felicia P. Cooper	Najia L. Dehbi	Steve Dyer	Jeannette M. Habermas	Ethel Eager	Jay A. Herman
Sharon L. Ayers	Elizabeth Bentley	Edward T. Brady	Richard C. Burner	Elaine E. Chambers	John J. Corelli	John J. Corelli	Blair DeHuff	Steve Dyer	Jeff J. Habermas	Laurel Earls	Bjorg M. Hermansen
James P. Ayres	Linda E. Bergmann	Eric J. Braga	Richard C. Burner	Karen J. Chambrovich	Pauline P. Cormier	Pauline P. Cormier	Everett S. DeJong, M.D.	Steve Dyer	Annette Hade	Paul DeKany	Cortney D. Hermansen
Nelle H. Ayres	Marc E. Bergstrom	Julie M. Braga	Richard C. Burner	Michelle Chatigny	Phyllis Corso	Phyllis Corso	Paul DeKany	Steve Dyer	Carol Hadley	Janet Del Mastro	Karen L. Hersing
	Julie A. Berke	Clifford R. Bragdon, Ph.D.	Richard C. Burner	Paul L. Chell	Diane L. Cox	Diane L. Cox	Michael V. Delgado	Steve Dyer	Terry Hadley	Michael V. Delgado	Mary Herzig
			Richard C. Burner					Leonard Edelstein	Elsie L. Gillespie		Cami Hester
			Richard C. Burner						John H. Haire		

Tim Hester	Helen A. Inglis	Anthony Kehres	Michael S. Krasny	Larry Lohman	Lilly McAleavey	Paris Michaels	Howard P. Murray	James Olachea	Nancy Peters	Janet E. Rattenbury	William D. Roth, PA
John W. Hesterman	Anthony J. Inserillo	Susan L. Keldsen	Susan Krissel	Kelly Lombardi	Craig M. McAllaster	Shirley E. Mikeliones	James W. Murrell	Judith Olszewski	Barbara Peterson	Patricia L. Rattray	Amy R. Rothrock
Norma G. Hesterman	Gloria A. Inserillo	Claire A. Kelly	Nancy Kronenfeld	Cheryl Lombardo	James A. McBride	Mark Mikolajczyk	Nell Mussler	Ronald J. Olszewski	Donnel L. Peterson	Tracy B. Ravin	Bryan R. Roub
Elizabeth Hewitt	Angela P. Isasa	Helen L. Kelly	Joseph Krystyniak	Aila K. Long	Maria Mikuen	Monica Mikuen	Amanda Myer	Rena Olyphant	Charles L. Pfrimmer	Faye Read-Huber	Judith E. Roub
Frances M. Hidalgo	Jaclyn Ivonnet	Shawna S. Kelsch	Matthew Kucera	Boon H. Loo	Mike McBride	Carolyn Miles	Cassandra Myer	Robert Olyphant	Sandy Pfrimmer	Alice F. Reagan	Jacqueline R. Rowe
Nancy N. Higgs	Brian A. Iwata	David W. Kempf	Sue A. Kucera	Jahala B. Lostroscio	Joan G. McCabe	Barbara B. Milford	Kristin Myers-Kemp	Adele Orlinsky	Deborah B. Phebus	Aletha M. Rector	Shay Rowe
Patrick C. Higgs	Barbara J. Jacobs	Gale M. Kempf	Brett Kuchmy	Rick Louche Jr.	Carla S. McCann	Eve Miller	David K. Nakamura	Saul Orlinsky	Steven C. Helps	Keven Reed	John Rowlett
Constance L. Hill	Francine Jacobs	Patricia A. Kempin	Marguerite B. Kuhl	Dorothy M. Lourenco	Jean A. McCann	Glenda A. Miller	James N. Nance, Esq.	Marcia C. Osborne	Gisele C. Phillips	Matthew T. Reed	Barbara D. Roy
Janice K. Hill	William E. Jacobs	Mildred J. Kempken	Dennis J. Kulonda, Ph.D.	Almita Lowery	Marilyn O. McCarthy	Melinda L. Miller	Michielle Napolitano	David Oscarson	Shelley A. Phillips-Leblanc	Ronnal P. Reichard	William G. Roy, USN Ret.
Kevin R. Hill	Alden C. Jacobus	June Kendall	Karen Kulonda	Tom Luce	Mary A. McCarthy	Loretta A. Mills	Steven E. Nathanson	Dan O'Shea	Fay Picardi	Shirley A. Reidel	Lois A. Ruane
Michael C. Hill	Bruce W. Jacobus Jr.	Lawrence B. Kenkel, Esq.	Jack A. Kump	Joan Lutz	Clifton A. McClelland Jr.	Luella C. Mills	Keidra Navaroli	Karen M. Osiniak	Mariann Pickrell	Mary Reiley	Harvey M. Rubin
Janice Hilmer	Bruce W. Jacobus	Lisa A. Kennedy	Joan C. Kump	Melisa Lynch	Kathleen H. McClelland	Tim Miodek	Barbara Needleman	Alan R. Ostendorp	Susan M. Pietrasko	Ray Reinard Jr.	Michelle Ruether
Jessica Hines	Tracy B. Jacobus	W. B. Kennedy	Shirley Kunde	Douglas C. MacPhee	Samuel S. McClure	Marlene K. Mirochna	Dione L. Negroni-Hendrick	Patricia Ostendorp	Stanley D. Pimenta	Mary R. Renfro	Judith A. Ruland
Frances Hippler	Claude James	E. P. Kenny	Mary A. Kurz	April T. MacDonald	Mary T. McCormack	Sharon Mischker	Bruce Nelson Jr.	Barbara J. Oswald, CPA	Julie Pinkerton	Robert M. Renfro	Thomas L. Ruland Sr.
Joseph M. Hixon IV	Michele Jancin	Jane Kepp	William J. Kurz	Libbey Macke	Grady McCoy	James E. Mitchell	Henry N. Nelson	Glen Outlaw	Scott G. Pinkerton	Gloria L. Renneker	Ilene M. Ruppert
Mara Hixon	Joshua Javaheri	Betty Keppeler	Mary A. Kutac	Alicia A. Macom	Patricia A. McCoy	Janet A. Mitchell	Jane Nelson	Myla S. Outlaw	John V. Piszczek	Edwin Rensing	Larry E. Ruppert
Barbara Hobin	Cynthia Jelinek	Robert Kerkorian	David La Rue	Paul F. Magee	William McCoy	Judy G. Mitchell	Mary F. Nelson	Erin Owens	Mae L. Piszczek	Dorothea B. Retter	Thea Rusch
James H. Hobson Jr.	Otto Jelinek	Sasan A. Kermani	Patricia Laginess	Mark R. Malek	Charles McCracken	Lola Mitchell	Sheryl G. Nelson	Robert S. Owens	Brenda L. Pitts	Henry H. Retter	Paul J. Ruschak
Suzanne M. Hodge	Charles Jenkins	Alan Kershaw	James S. Laham, CPA	James T. Mallon	Terry J. McCumbers	Lu Ann W. Mitchell	Lisa Nemeroff	Rudolph Pacarro	Michelle Pivar	Andrew W. Revay Jr., Ph.D.	Deanna Rush
Annetta Hoeck	Dolores A. Jenkins	Carol F. Keydel	Michelle Laham	Kimberly A. Manion	John P. McCune	Tucker Mitnik	Elizabeth A. Nettles	C. Clara Padron	James Platman	Jane B. Revay	James Rush
Joan M. Hoerning	Caroline Jenne	Karen Kezer	Richard Laliker, CFP	Nancy A. Mann	Fred A. McCurry	Lois A. Mittleman	Anna M. Neve	Arturo M. Pagan	Margaret W. Plum	Amarilis R. Reyes	David C. Russell
Victoria A. Hoffman	Susan R. Jennings	Gregory Kidd	Donna LaMantia	Denita S. Marcum	Susan K. McGahee	Michelle Mock	Christine Newman	Jonathan T. Paine	Matthias Plum Jr.	Emille M. Reynolds	Gilbert A. Russell
Phillis M. Holland	Julia Jernigan	Dana S. Kilborne	Elizabeth Lamb	Kay Marin	Sandra McGinnis	Florence M. Modzelewski	Deborah Newman	Kathleen A. Palaschak	Shirley Plumb	Gloria Reynolds	Michelle Russell
William J. Holland	Joan Joesting-Mahoney,	Mary J. Kilcullen	Mary Lambdin	Tony Marinatos	Mary McGlaughlin	Lisa Moffitt	Diane N. Newman	Kathleen Pallone	Margot R. Plunkett	Rebecca Reynolds	Sandra D. Russell
Dorothy Holley	Ed.D.	Patience E. Killen	John R. Lambert	Connie Markovic-	Donald J. McGowan	Paula G. Molnar	Madeleine W. Newman	David M. Palmbach	Gregory H. Pollock	Robert Rhoads	Sheldon Rutherford
Lisa Holmes	Margaret Joffe	Vera E. Kinder	Madelle W. Lamoureux	Schniedman	Catherine P. McGuffey	Thomas R. Molnar	Marlis Newman	Dolores M. Pannell	Holly R. Pollock	Dianne M. Rhodes	Stephen F. Rutz
Patricia G. Holmes	Victoria Joh	Alan R. King	Anne L. Landgrebe	Patricia A. Maroney	Christopher S. McHenry	Joseph P. Monaghan	Norma Newman	Frank W. Pannell	Edwin Ponce	Donald G. Rhodes, M.D.	Julie A. Ryan
Thomas J. Holmes	Christina L. Johnson	Doris W. King	Gary F. Lang	Lisa J. Marques	Stacy J. McHenry, L.M.T.	Marion A. Monett	John E. Newton	Jackie M. Pantello	Carol Poole	Henry V. Rhodes	Lynn C. Ryan
Kathleen Holoubek	Claude A. Johnson	Jamie King	Terri L. Lange	Adam Marshall	Katherine A. McNerny	Esther S. Monteith	Carol Nicholson	Jacqueline M. Parenti	Gregory A. Popp	Mitchell S. Ribak	Martin J. Ryan
Henry E. Holzbach	Clay Johnson	Maxwell C. King	Joe LaPan	Grady J. Marshall	Elinor S. McKee	Amy L. Moore	Maureen E. Nicholson	David D. Parker	David P. Porter	Eric Richard	Steve P. Ryland
Sally E. Holzbach	Deniz Johnson	Patricia P. King	Joseph S. Laposata, USA Ret.	Nancy F. Marshall	Larry McKee	William H. Moore	Debbie A. Nickle	Linda D. Parker	Richard M. Potter	Jacob Richard	Tracy L. Ryland
Allison Homan	Dorothy S. Johnson	Margaret S. Kinsey	Carmen M. Lauer	Ronald L. Marshall	Vicki McKee	Gerald Moores	Scott A. Nickle	Ted Parker	Susan G. Potter	Sandra L. Richmond	Thomas J. Saam
Susan J. Honecker	Elizabeth P. Johnson	Judith A. Kinshaw-Ellis	Carmen M. Lauer	Edna J. Marsteller	Susan H. McKeller	Betty S. Moorhead	Vera I. Nickolas	Elizabeth Parkinson	Virginia C. Potter	Barbara Riddoch	Vijay L. Saam
John R. Hopkins	Jeannie P. Johnson	Phyllis R. Kirchner	Ken D. Laumer	Edna J. Marsteller	Anna M. McKenzie	Betty S. Moorhead	Vera I. Nickolas	Elizabeth Parkinson	Virginia C. Potter	Barbara Riddoch	Vijay L. Saam
Susan Hopkins	Kathy Johnson	Karen E. Kirkland	Aline Lauzon	Ralph Marsteller	Kelly J. McKibben	Anna M. McKenzie	Katherine E. Niebuhr	Edna S. Parris	Wendy L. Potter	Jim L. Ridenour, Ret.	Peter Sacco
Peggy A. Horsfield	Linda L. Johnson	Diane Kirschenbaum	Edna J. Lavandier	Ann Martens	Wanda D. McKibben	Sharon L. Moren	Lisa Ninnis	Denwood B. Parrish	Marjorie Pravden	Marcia L. Ridenour	Prasanta K. Sahoo, Ph.D.
William C. Horsfield	Ralph A. Johnson	Jack A. Kirschenbaum	Robert J. Leader	Ann Martens	Carol A. Martin	Rita Moreno	Susan Nislen	Julie Parrott	Wayne Presley	Michael Riegelsberger	Rosemarie Salazar
David D. Hott	Robert L. Johnson	Annette Kirschner	Steven J. Leavitt	Evelyn Martin	David Lee	Ruben A. Moreno, M.D.	Jeannette E. Nissen	Alvin Parry	Jay Ann Preston	Carol A. Riolo	John Saltmarsh
Carol D. Houck	Susan E. Johnson	Georgory A. Kirschner	David Lee	Fred J. Martin	Patricia Lee	Barbara Morgan	Gary Nobel	Gwynn S. Parry	Richard Preston	Don F. Riordan Jr.	Lee Ann Saltzman
Pauline Houle	Theodore E. Johnson	Nora Kirschner	Patricia Lee	Mary K. Martin	M. A. Leigh	JoAnn H. Morgan	Donna L. Noeske	Doris R. Parsons	Anthony W. Price	Michael Ritchie	Anita Saluja
Michael A. Houts	William M. Johnson	Stanley M. Kirschner	M. A. Leigh	Michael R. Martin	Terry Leigh	Lydia A. Morgan	Philip F. Nohrr, Esq.	Michael Passariello	Kevin T. Price	Gail T. Ritter	Helen E. Sambuca
Susan M. Houts	Royce Jones	John H. Kispert	Terry Leigh	Robert E. Martin	Gabriel Leon	Scott D. Morgan	Margaret A. Nolan	Daksha A. Patel	Richard W. Price	Helen T. Ritter	P. M. Sams
Frances Howard	Tooty Jones	Maureen Kispert	Gabriel Leon	Jenifer G. Marx	Joan Les	Donna Morris	Norine E. Noonan	Lauren Pattelena	Jo Ellen Pridmore	Jeanne G. Roach	Elizabeth M. San Filippo
Joe Howard	Darcia Jones-Francey	Sandie Klaver	Joan Les	Robert F. Marx	James F. Lesser	Merry W. Morris	Lisa Norman	Ken Patwari	Enio L. Prieto, M.D.	John K. Roach	Frank A. San Filippo
Mark Howell	Joseph J. Joseph Jr.	Sandie Klaver	James F. Lesser	Charles J. Marzzacco	Mary F. Lesser	Sara C. Morrison	Rochelle Norman	Elaine M. Paul	Mildred I. Prieto	Julia R. Roach	Jamie R. Sancarrier
Patricia Howlett	Mary J. Joseph	Kristen Klein-Nicholl	Mary F. Lesser	Patricia M. Marzzacco	Thomas Leupp	David S. Morse	Stacey Norman	Eddy Pauley	Elaine G. Prime Wexford	Michael Riegelsberger	Kimberly S. Sancarrier
Sara B. Howze	Juliette A. Joubert	Melissa Klos	Thomas Leupp	Kathleen Mason	Bennett L. Lewis, USA	Don D. Morse	Hubert C. Normile Jr., Esq.	Olga Paulikovsky	Daniel Priore	George E. Roberts	Christie Sanders
Charles W. Hoyman Jr.	Donna Joyal	Carol S. Knapp	Bennett L. Lewis, USA	Kathleen Mason	(RET)	Susan M. Morse	Lynn K. Normile	Debra J. Pavlakos	Barbara Proctor	Mary J. Roberts	Mark S. Sanders
Yvonne H. Hoyman	Lisa D. Kahn	Linda Knight	Joanne Masterson	Peter J. McLoughlin	Heather M. Melbourne	Deborah Mortiere	Christopher R. Norton	Ellen Pavlakos	James A. Proctor Sr.	Cynthia Robinson	Ibbye SanFilippo
Grady M. Hudson	Michael H. Kahn, PA	Ray G. Knodel	Francisco Matanzo	Margaret E. Meier	Beverly K. Lewis	Caroline Mosrie	Cynthia Novak	John L. Pavlakos	Patricia D. Pruitt	Debra K. Robinson	Sean M. Sanger
Janice L. Hudson	Michael H. Kahn, PA	Jay C. Knoll	Jane B. Matanzo	Heather M. Melbourne	Charine Lewis	Barbara Moss	Klyne D. Nowlin	Joyce Pawlowski	June Pustelnyk	William F. Robinson Jr.	Dixie N. Sansom
Thomas C. Hudson	Susan G. Kahn	Linda N. Knoll	Jane B. Matanzo	Heather M. Melbourne	Eleanor M. Lewis	Barbara Moss	Klyne D. Nowlin	Joyce Pawlowski	June Pustelnyk	William F. Robinson Jr.	Dixie N. Sansom
Allen S. Huff, CLU, ChFC	Susan G. Kahn	Linda N. Knoll	Jane B. Matanzo	Heather M. Melbourne	James C. Lewis Jr.	Barbara Moss	Klyne D. Nowlin	Joyce Pawlowski	June Pustelnyk	William F. Robinson Jr.	Dixie N. Sansom
Noretta D. Huff	Franck Kaiser Jr.	Lindsey A. Knopf	Jane B. Matanzo	Heather M. Melbourne	Terry W. Knowles	Sheila Moss	Christel Noyes	Pamela Pedlow	David Querim	Claire R. Rodgaard	Kamran Sarkarati
Douglas H. Humm	Priscilla A. Kalajian	Terry W. Knowles	Jane B. Matanzo	Heather M. Melbourne	Joachim Knueppelholz	Karen L. Mott	Judy S. Nunn	Barbara L. Peery, Ph.D.	Connie Quinn	John A. Rodgaard, USNR	A P. Sasso
Ruth E. Hunsinger, TTEE	Laurie C. Kamhi	Joachim Knueppelholz	Jane B. Matanzo	Heather M. Melbourne	Janet O. Koca	Rex E. Moule, Esq.	Elizabeth Nunziato	Suzanne L. Peiffer	Nancy Quintero	Judith E. Rohan	Athena Sasso
Darleen A. Hunt	Kathleen Kane	Janet O. Koca	Jane B. Matanzo	Heather M. Melbourne	Donna L. Koch	Christine A. Merrill	Rosi Oberlaender	Candance Pelham	Frank Quriel	Donna Romancik	Vera R. Sattler
Jerry E. Hunt	Ruth E. Hunsinger, TTEE	Donna L. Koch	Jane B. Matanzo	Heather M. Melbourne	Walter Koenig	Marion K. Merry	Sigi O. Oberlaender	Sharon F. Pell	Brenda S. Radke	Serio Romero	Judith S. Saulnier
Susan A. Hunt	Anna Kanige	Walter Koenig	Jane B. Matanzo	Heather M. Melbourne	Kim R. Kotsifas	Don Matthews	Patricia J. O'Brian	Georgia Pelsue	Joe Radosky	Harry Rose	Linda A. Savold
Lottie Hunter	Charles J. Kanige	Kim R. Kotsifas	Jane B. Matanzo	Heather M. Melbourne	Murray Lilley	Jane B. Mattson	Dan O'Brien	Marilyn J. Penn	Ann M. Ragan	Robert Rosenberger	Dave Sawyer
Michael L. Hunter, USAF Ret.	Theodore F. Karabatsos	Simon Koumjian	Jane B. Matanzo	Heather M. Melbourne	Vicki J. Limberis	Carole K. Maul	Claudia M. O'Brien	Raymond H. Penn	Robert Ragan	Harriet Rosenblum	Susan T. Saylor
Penelope W. Hurley	Rosalie J. Kascmer-Ryan	Beverly A. Kovach	Jane B. Matanzo	Heather M. Melbourne	Vita M. Lincoln	Patricia F. Maxwell	Erin C. O'Brien	Stacie Penny	Gerald B. Ramos	Victor B. Ross III, USN Ret.	Patricia Scafati
Robyne Huskey	David Kawa	John E. Kovach	Jane B. Matanzo	Heather M. Melbourne	Chris Lindbaeck	Janice L. Maynard	Jeffrey T. O'Brien, M.D.	Brent E. Peoples	James R. Rankin	Xochitl Ross	Charles F. Scanlon
Sandra Ihnen	Khairy A. Kawi	Peter Krafinski	Jane B. Matanzo	Heather M. Melbourne	Lyn M. Liner	Darlene Mazur	Isabel Ochoa-Youssef	Travis J. Peres	Peter Ranon	Amy E. Rossetter	Sandi Scannelli
	John Keddy	Karen W. Kramer	Jane B. Matanzo	Heather M. Melbourne	David L. Livingston	John Mazur	Robert Octner	Nancy B. Perry	Michael Raphael	Carl J. Rosskamp	David C. Schafer
	Donna J. Keen	Lori Krangel	Jane B. Matanzo	Heather M. Melbourne	Amanda L. Lockwood	Barbara H. Mazzone	Jeanne Odermann	Sharon Perry	Frank Rash	Hazel A. Rosskamp	Katie Schea
	Monte Keen	C. A. Krasny	Jane B. Matanzo	Heather M. Melbourne	Joanne Lockwood	Dora F. Mazzone	Daniel Okeefe	Tom Perry	Jane A. Rasmussen	Bernice Roth	Deborah Schenck
			Jane B. Matanzo	Heather M. Melbourne	Angela McAleavey	Angela McAleavey	Faith C. Murray	Barbara A. Person	Roxanna W. Rathgerber	Norma C. Roth	Carol Schiff

Thomas Schinske	Edmund Skellings	Jean E. Stephens	Christine M. Thompson	Cynthia Ville	Amy Wian	Susan J. Ball	Foundations	Rockwell Collins Matching Gift	Vulcan Materials Co.	Melbourne Regional Chamber of East Central Florida	Shadow Mountain Aviation LLC
Danielle Schlichenmaier	Louise N. Skellings	Mark A. Stephens	Dianne Thompson	Jeff Ville	Catherine Wicks	Macon C. Ballard	Abbott Laboratories Fund	Mercedes/Porsche/Audi of Melbourne	Melbourne	Florida	Spectra Contract Flooring
Matthew K. Schlichenmaier	Eugene Slattery	Bari C. Stevenson	Harold G. Thompson	Donna J. Vines	Scott Widerman	Trina L. Ballard	Agilent Technologies	Bright House Networks	State Farm Life Insurance Co.	Pinkerton Wealth Management	Technology Conservation Group
Mary R. Schneider	Randall Sloucum	Scott Stewart	Mark G. Thompson	Grace S. Vista	Joan Wieser	John C. Barranti, Ed.D.	Matching Program	State Farm Life Insurance Co.	National Collegiate Athletic Association	PNC Bank HQ	Women's Business Center at Florida Tech
Mary R. Schneider	Randall Sloucum	Scott Stewart	Mark G. Thompson	Grace S. Vista	Joan Wieser	John C. Barranti, Ed.D.	Matching Program	State Farm Life Insurance Co.	National Collegiate Athletic Association	PNC Bank HQ	Women's Business Center at Florida Tech
Dawn D. Schnuck	James Sluder	Lynn A. Stieglitz	Susan E. Thompson	Susan Vogel	Ruth Wildman	Patricia A. Barranti	Balda Family Foundation	State Farm Life Insurance Co.	Crowne Plaza Melbourne	Wells Fargo	Brevard Framing and Drywall
Robert Q. Schnuck	Lawrence Smelser	Sandra L. Stiffler	Charles Tillett	Diane M. Walker	Joyce P. Wilkins	J. C. Baum, Ph.D.	Bisk Family Foundation	State Farm Life Insurance Co.	Oceanfront	Wells Fargo Bank, N.A.	Brevard Framing and Drywall
Kela B. Schram	Anna C. Smith	Becky Stiles	Carrie G. Tillman	Kim Walker	Judith D. Willey	Marjorie A. Beckett	Boeing Gift Matching Program	State Farm Life Insurance Co.	Southern Janitor Supply & Services Inc.	Wells Fargo Bank, N.A.	Brevard Framing and Drywall
Laraine C. Schultz	Annette Smith	Carol F. Stinson	Willie J. Tillman	Larry W. Walker	Linda E. Williams	Martin Y. Bernstine	Bristol-Myers Squibb Foundation Inc.	State Farm Life Insurance Co.	Southern Janitor Supply & Services Inc.	Meg O'Malley's Inc.	Brevard Framing and Drywall
Jutta I. Schumm	Carolyn O. Smith	WM M. Stirling	Barbara A. Tomanek	Phillip J. Walker	Mary Williams	Samuel L. Bogdon	Buehler Aviation Research Foundation	State Farm Life Insurance Co.	Southern Janitor Supply & Services Inc.	Meg O'Malley's Inc.	Brevard Framing and Drywall
Mary Lou Schwinn	Cynthia N. Smith	Timothy B. Stockton	Paul F. Tomanek	Sandra M. Walker	Mason Williams	Susan M. Bogdon	The Emil Buehler Perpetual Trust	State Farm Life Insurance Co.	Southern Janitor Supply & Services Inc.	Meg O'Malley's Inc.	Brevard Framing and Drywall
Cheryl S. Scott	David L. Smith	Camilla Stoeckel	Linda M. Tomasini	Shirlee Walker	Michael H. Williams	Ritva T. Bowman	Cairns Foundation Inc.	State Farm Life Insurance Co.	Southern Janitor Supply & Services Inc.	Meg O'Malley's Inc.	Brevard Framing and Drywall
Edward I. Scott	David Smith	Linda J. Stofko	David J. Tomczak	Terry Walker	Oscar Williams, USAF Ret.	Thomas E. Bowman, Ph.D.	Carmax Foundation	State Farm Life Insurance Co.	Southern Janitor Supply & Services Inc.	Meg O'Malley's Inc.	Brevard Framing and Drywall
Laura Scott	Donna P. Smith	Philip F. Stokes	Deborah L. Tomczak	David K. Wallace	Theresa T. Williams	Barbara A. Calcagni	Community Foundation For Brevard County	State Farm Life Insurance Co.	Southern Janitor Supply & Services Inc.	Meg O'Malley's Inc.	Brevard Framing and Drywall
Steven E. Scott	G. Wayne Smith	Virginia Stonestreet	Harold Topol	Evert C. Wallenfeldt	Thomas Williams	John A. Calcagni	Corning Inc. Foundation	State Farm Life Insurance Co.	Southern Janitor Supply & Services Inc.	Meg O'Malley's Inc.	Brevard Framing and Drywall
James Scroggins	Gwendoline Smith	Wayne L. Storey	Madelyn Topol	Mary E. Wallis	Vaughn D. Williams	Genevieve Cason	Creative Political Foundation	State Farm Life Insurance Co.	Southern Janitor Supply & Services Inc.	Meg O'Malley's Inc.	Brevard Framing and Drywall
Paul Seabourne	Jessie Smith	Paul Storm	Michael J. Toppa	Michael M. Wallis	Helen Wilson	Robert D. Cason	Delta Airlines Corporate Giving Program	State Farm Life Insurance Co.	Southern Janitor Supply & Services Inc.	Meg O'Malley's Inc.	Brevard Framing and Drywall
Teresa K. Sees	Kevin B. Smith	Elting L. Storms	Larry D. Torchia	Barbara C. Wall-Scanlon	Mark B. Wilson	Barbara M. Cofer	Joseph M. Flammio Family Foundation Inc.	State Farm Life Insurance Co.	Southern Janitor Supply & Services Inc.	Meg O'Malley's Inc.	Brevard Framing and Drywall
Donald Seiford Sr.	Martha E. Smith	Susan S. Stout	Joann B. Torpey	Kesann Walrond-McClean	Donna F. Wilt	R. H. Cofer	The Freedom Forum	State Farm Life Insurance Co.	Southern Janitor Supply & Services Inc.	Meg O'Malley's Inc.	Brevard Framing and Drywall
Renee L. Sekersky-Zung	Michele Smith	Edwin F. Strother	Maureen S. Torrens	James F. Warburton	Kathleen Wimbrow	Diane L. Deaton	GenCorp Foundation	State Farm Life Insurance Co.	Southern Janitor Supply & Services Inc.	Meg O'Malley's Inc.	Brevard Framing and Drywall
Lucille Serody	Sharon Smith	Christina Struski	Maria V. Torres	Wilma E. Warburton	Patricia Wimmer	Louise L. Jenkins	General Electric Foundation	State Farm Life Insurance Co.	Southern Janitor Supply & Services Inc.	Meg O'Malley's Inc.	Brevard Framing and Drywall
Robert I. Serody	Grace K. Smith Gall	Consuelo Suarez	Jose Torres-Irizarry	Ken Ward	R. P. Wimmer	Susan Jurgens	Google Matching Gifts Program	State Farm Life Insurance Co.	Southern Janitor Supply & Services Inc.	Meg O'Malley's Inc.	Brevard Framing and Drywall
Roger A. Sevigny	Sharin Smolenyak	Susan Subocz	C. J. Townsend	Ann E. Warden	Jean B. Winchell	William K. Jurgens Jr.	Gulf Coast Community Foundation of Venice	State Farm Life Insurance Co.	Southern Janitor Supply & Services Inc.	Meg O'Malley's Inc.	Brevard Framing and Drywall
Sandra K. Sevigny	Charles L. Snell Jr.	Karen S. Sukolsky	Theresa Travis	William S. Warden	Pamela J. Winn	Edward H. Kalajian, Ph.D.	Invest In Others Charitable Foundation	State Farm Life Insurance Co.	Southern Janitor Supply & Services Inc.	Meg O'Malley's Inc.	Brevard Framing and Drywall
Donna J. Sewell	Cynthia M. Snell	Robert Sukolsky	Debra A. Tremblay	Frances J. Warkomski, Ed.D.	Richard J. Winn	Priscilla A. Kalajian	Intel Foundation	State Farm Life Insurance Co.	Southern Janitor Supply & Services Inc.	Meg O'Malley's Inc.	Brevard Framing and Drywall
Katherine T. Seymour	Nancy A. Snyder	Mary Ann M. Sullins	Jo M. Trent	Sue L. Wasdin	Henrietta M. Winter	Edna J. Marsteller	Illinois Tool Works Foundation	State Farm Life Insurance Co.	Southern Janitor Supply & Services Inc.	Meg O'Malley's Inc.	Brevard Framing and Drywall
Richard A. Shader	Sara Snyder Crumppacker	Betty R. Sullivan	James T. Trezza	Thomas E. Wasdin	Linda L. Wise	Ralph Marsteller	Invest In Others Charitable Foundation	State Farm Life Insurance Co.	Southern Janitor Supply & Services Inc.	Meg O'Malley's Inc.	Brevard Framing and Drywall
Rita J. Shader	M. S. Solar	Rachael P. Sumner	Nancy M. Trezza	Carol W. Waters	Darla K. Wisinger	Christina G. Matthews	Lettie Pate Whitehead Foundation Inc.	State Farm Life Insurance Co.	Southern Janitor Supply & Services Inc.	Meg O'Malley's Inc.	Brevard Framing and Drywall
Janet Shaffner	Michael Soliven	Ann R. Super	Julius W. Trimbach	Stephen L. Watkins	Kelly J. Withrow	Don Matthews	Marin Community Foundation	State Farm Life Insurance Co.	Southern Janitor Supply & Services Inc.	Meg O'Malley's Inc.	Brevard Framing and Drywall
Mahesh Shah	Paul N. Somerville	Ernest M. Sutton	Lisa A. Troner	William T. Watkins	Margaret M. Witt	Anamaria M. Michaels	Microsoft Matching Gift Program	State Farm Life Insurance Co.	Southern Janitor Supply & Services Inc.	Meg O'Malley's Inc.	Brevard Framing and Drywall
Jaya Sharma	Sheila B. Somerville	Sharon G. Sutton	William A. Troner	Gary L. Watson	Richard Wolf	Paris Michaels	Monsanto Fund	State Farm Life Insurance Co.	Southern Janitor Supply & Services Inc.	Meg O'Malley's Inc.	Brevard Framing and Drywall
Edward P. Shaw Jr.	Sherie G. Sommer	Hilary Swain	Anita Y. Trost	Gregory Watson	Howard Wolfe	Margaret B. Moore	Morgan Stanley Smith Barney Foundation	State Farm Life Insurance Co.	Southern Janitor Supply & Services Inc.	Meg O'Malley's Inc.	Brevard Framing and Drywall
Anne G. Shealy	Julie K. Song	Jim T. Swann III	Jack E. Truett	Jeanne Weaver	Richard H. Woltman	Ilona Mueller	NextEra Energy Foundation Inc.	State Farm Life Insurance Co.	Southern Janitor Supply & Services Inc.	Meg O'Malley's Inc.	Brevard Framing and Drywall
Patrick Sheedy	Si Y. Song	Jeneral B. Swindell	Kimberly Trujillo	Hannah K. Webb	Betty L. Wood	Dean R. Norris	Pfizer Foundation	State Farm Life Insurance Co.	Southern Janitor Supply & Services Inc.	Meg O'Malley's Inc.	Brevard Framing and Drywall
David E. Shein, Esq.	Joan H. Sorensen	Rebecca K. Swoyer	Mary K. Tsamoutales	Ellen K. Webbe	Robert A. Wood	Marcene F. Norris	PNC Foundation	State Farm Life Insurance Co.	Southern Janitor Supply & Services Inc.	Meg O'Malley's Inc.	Brevard Framing and Drywall
Penny Shellhorn-Schutt	Scott T. Sorensen	Keith SzaChacz	Nicholas F. Tsamoutales	Harry P. Weber, Ph.D.	Carlos Woodward	Susan A. O'Hara	Raytheon Matching Gifts	State Farm Life Insurance Co.	Southern Janitor Supply & Services Inc.	Meg O'Malley's Inc.	Brevard Framing and Drywall
Sandra P. Shenker	Homer G. Sparks	Nell E. Talcott	Jean E. Tucker	Harry P. Weber, Ph.D.	Steve D. Woodward	Richard M. Potter		State Farm Life Insurance Co.	Southern Janitor Supply & Services Inc.	Meg O'Malley's Inc.	Brevard Framing and Drywall
Teresa M. Sheridan-Johnson	Jeanette C. Sparks	Terri L. Tallman	David Turnage	Marilyn S. Weber	Leslye Worboys	Susan G. Potter		State Farm Life Insurance Co.	Southern Janitor Supply & Services Inc.	Meg O'Malley's Inc.	Brevard Framing and Drywall
Joel F. Sherman	Delores O. Spearman	John J. Talone Jr.	Jaymes Turnbull	Marilyn Webster	Richard Workman	Dorothea B. Retter		State Farm Life Insurance Co.	Southern Janitor Supply & Services Inc.	Meg O'Malley's Inc.	Brevard Framing and Drywall
John S. Sherman	Guy M. Spearman III	Dorli Tanner	Annee Marie J. Turske	Rickey Weiand	Alton H. Worrall	Henry H. Retter		State Farm Life Insurance Co.	Southern Janitor Supply & Services Inc.	Meg O'Malley's Inc.	Brevard Framing and Drywall
Rheta C. Sherman	Susan Spence	James D. Tanner	Cecilia Tyne	Judy Weight	Ethel A. Worrell	Andrew W. Revay Jr., Ph.D.		State Farm Life Insurance Co.	Southern Janitor Supply & Services Inc.	Meg O'Malley's Inc.	Brevard Framing and Drywall
Sandra R. Sherman	Van Spence	Edward E. Tapasak	Rich Udahl	Tony Weight	Margaret Wright	Jane B. Revay		State Farm Life Insurance Co.	Southern Janitor Supply & Services Inc.	Meg O'Malley's Inc.	Brevard Framing and Drywall
Alton Shoda	Carma K. Spencer	Soraya M. Tappan	Judith M. Ufferman	Ann B. Weil	David K. Wurmfeld	Fredrick B. Rotz		State Farm Life Insurance Co.	Southern Janitor Supply & Services Inc.	Meg O'Malley's Inc.	Brevard Framing and Drywall
Kim W. Shoemaker	Judy Spencer	Angela Taylor	Robert C. Ufferman	Jack Weil	Teri L. Wurster	Carl M. Sandin		State Farm Life Insurance Co.	Southern Janitor Supply & Services Inc.	Meg O'Malley's Inc.	Brevard Framing and Drywall
Ray Short	Michael L. Spencer	Bonnie Taylor	Christine Ullian	Michael Weiland	Donald A. Wylie	Carole M. Sandin		State Farm Life Insurance Co.	Southern Janitor Supply & Services Inc.	Meg O'Malley's Inc.	Brevard Framing and Drywall
Laurie Siegel	Anita N. Sperling	Christopher A. Taylor	Mike S. Ullian	Stephen Weinbaum	Grace R. Wylie	Kenneth A. Sawyer		State Farm Life Insurance Co.	Southern Janitor Supply & Services Inc.	Meg O'Malley's Inc.	Brevard Framing and Drywall
Paul J. Siegel	Gail Spicer	Diana Taylor	Barbara Unger	Linda A. Weinberg	Carolyn S. Wylly	Cynthia R. Schmitt		State Farm Life Insurance Co.	Southern Janitor Supply & Services Inc.	Meg O'Malley's Inc.	Brevard Framing and Drywall
Teresa Siegel	Peter Spies	Elaine N. Taylor	Patrick B. Unger	Rosalind E. Weiss	Peter Wynkoop	David Schmitt		State Farm Life Insurance Co.	Southern Janitor Supply & Services Inc.	Meg O'Malley's Inc.	Brevard Framing and Drywall
Julie F. Sillin	Jack B. Spira	Jaimie Taylor	Allan D. Unseth	Steven K. Weiss	Shaohua Xu	Linda A. Sells		State Farm Life Insurance Co.	Southern Janitor Supply & Services Inc.	Meg O'Malley's Inc.	Brevard Framing and Drywall
Sarah O. Silvernail	Judy L. Spira	Jerry Taylor	Kristin J. Uran	Regina Weitzman	Donna S. Yarger	Ann H. Sepri		State Farm Life Insurance Co.	Southern Janitor Supply & Services Inc.	Meg O'Malley's Inc.	Brevard Framing and Drywall
Haydee Silvestrini	Charles M. Spohn	Lisa Taylor	Maria Uriondo	Michael W. Welch Sr.	Martha J. Young	Paavo Sepri, Ph.D.		State Farm Life Insurance Co.	Southern Janitor Supply & Services Inc.	Meg O'Malley's Inc.	Brevard Framing and Drywall
Horacio Silvestrini	Geraldine L. Spohn	Virginia J. Taylor	Linda K. Vadyak	W. J. Welling	Nancy M. Young	Homer G. Sparks		State Farm Life Insurance Co.	Southern Janitor Supply & Services Inc.	Meg O'Malley's Inc.	Brevard Framing and Drywall
Mariano Silvestrini	Thomas H. St. Onge	Walter D. Teague	Jeanne H. Valaska	Marion C. Wenner	Philip Yu	Jeanette C. Sparks		State Farm Life Insurance Co.	Southern Janitor Supply & Services Inc.	Meg O'Malley's Inc.	Brevard Framing and Drywall
Walter C. Simciak	Susan Stackpoole	Moira P. Tellechea	James Valenti	Elizabeth M. Werner	Cheryl Zappola	Dan B. Stephens		State Farm Life Insurance Co.	Southern Janitor Supply & Services Inc.	Meg O'Malley's Inc.	Brevard Framing and Drywall
Judith D. Simonds	Edward L. Stahley	Ann Telling	Julio D. Vallette	D. E. West	Catherine F. Ziebell	Mary Lou Stephens		State Farm Life Insurance Co.	Southern Janitor Supply & Services Inc.	Meg O'Malley's Inc.	Brevard Framing and Drywall
Robert J. Simonds	Sandy Stanley	William L. Telling	Susan D. Vallette	Michael K. West, PE, Ph.D.	George P. Zies	Elaine N. Taylor		State Farm Life Insurance Co.	Southern Janitor Supply & Services Inc.	Meg O'Malley's Inc.	Brevard Framing and Drywall
Patricia A. Simone	Todd J. Starkey	Marilyn G. Tetebenbaum	Michael J. Valletutti	Cathy Weybrew	Leonor G. Zies	Darcy Thursby		State Farm Life Insurance Co.	Southern Janitor Supply & Services Inc.	Meg O'Malley's Inc.	Brevard Framing and Drywall
Linda Simpson	James States	Camille R. Theobald	Renee Valletutti	Brett Wherry	Peter M. Zies	Michael H. Thursby		State Farm Life Insurance Co.	Southern Janitor Supply & Services Inc.	Meg O'Malley's Inc.	Brevard Framing and Drywall
Margaret Simpson	Richard States	Betsy S. Thiel	Luby B. VanDaalen	Cynthia S. Wherry	Kim Zipper	Ellen K. Webbe		State Farm Life Insurance Co.	Southern Janitor Supply & Services Inc.	Meg O'Malley's Inc.	Brevard Framing and Drywall
Jack A. Sinclair	R. L. Stedham	Felyce A. Thomas	Margaret M. Vaughan	Stephen R. Wherry	Lyle H. Zody	Frank M. Webbe, Ph.D.		State Farm Life Insurance Co.	Southern Janitor Supply & Services Inc.	Meg O'Malley's Inc.	Brevard Framing and Drywall
Martha W. Sinclair	Tracy E. Steele	Jerome Thomas	Tessa J. Velten	Joanna E. White	Connie Zonka	Harry P. Weber, Ph.D.		State Farm Life Insurance Co.	Southern Janitor Supply & Services Inc.	Meg O'Malley's Inc.	Brevard Framing and Drywall
Henry L. Singer	Betty Lou Steen-Clarke	Marvin A. Thomas	Augusto Venegas	Robert J. White		Marilyn S. Weber		State Farm Life Insurance Co.	Southern Janitor Supply & Services Inc.	Meg O'Malley's Inc.	Brevard Framing and Drywall
Brigitte K. Sinton	Janice Stein	Monica A. Thomas	John Venette	Anne White-Fox		John J. Yurick Jr.		State Farm Life Insurance Co.	Southern Janitor Supply & Services Inc.	Meg O'Malley's Inc.	Brevard Framing and Drywall
David Sinton	Jennifer H. Stein	Silvia Thomas	Kathleen M. Verpaele	Donald Whitehouse		Judy M. Yurick		State Farm Life Insurance Co.	Southern Janitor Supply & Services Inc.	Meg O'Malley's Inc.	Brevard Framing and Drywall
James A. Sisserson, Esq.	Leon J. Stein	C. Wayne Thompson	Maureen Viall	Elizabeth T. Whittaker				State Farm Life Insurance Co.	Southern Janitor Supply & Services Inc.	Meg O'Malley's Inc.	Brevard Framing and Drywall
Janeille Sisserson	David Stephan	Cherie Thompson	Kimberly S. Vice	Kenneth A. Whittaker, CPA				State Farm Life Insurance Co.	Southern Janitor Supply & Services Inc.	Meg O'Malley's Inc.	Brevard Framing and Drywall

Brevard Indo-American Medical & Dental Association	Knights of Columbus Neuropsychology & Counseling Associates	Walmart Melbourne Foundry by M The Gauzeway Applebee's	Strategies for Success Inc. The Palm Cafe Joan's Perfect Pies Sunshine Nails	Charles A. Frueauff Foundation Scholarship Endowment	Dr. Walter M. Nunn Jr. Scholarship Edward W. Snowdon and Lee Hill Snowdon Fellowship	Hydro Aluminum Corp. College of Engineering Scholarship	Marsha A. Duncan Scholarship	School of Psychology Endowment	City of Cocoa Leisure Services	Victoria A. Alterman David T. Altobelli	David T. Bernardini Debra L. Bernier
Community Credit Union	LLC	The Gauzeway Applebee's	Joan's Perfect Pies Sunshine Nails	Chi Phi Scholarship	Lee Hill Snowdon Fellowship	Indiafest Brevard Scholarship Endowment	Marvin Yarosh and John Wiles Endowment	Shirley J. Maxis Engineering Scholarship for Women Athletes	Cocoa Village Playhouse Consumer Dental	Melissa Alvarez-Mangual Claire Amalfitano	Joseph C. Bernier Paul Bernkopf
Duys Marine Electronics Corp.	Secor Strategies LLC Aetna Life and Casualty	Interior Design Associates Inc.	Escoffery Consulting Collaborative Inc.	Chris Giddings Memorial Scholarship	Edwin A. Link Special Collections Endowment	Intercollegiate Rowing Program Endowment	McNeight Family Scholarship Fund	SkyCross Laboratory Endowment	Craig Technologies	Eugenie Amalfitano Colleen S. Amgott	Seth Bernstein Marcia D. Berry
Foiled Again Inc. dba Maxine's Salon & Spa MEE3 LLC	Imperial Salon & Spa II The Florida Beer Co. FIT Aviation	The Planning Shop Maxwell C. King Center Crummey Investigations Inc.	Hydro Aluminum Rockledge Intel Foundation	Christopher Sherman Neese Memorial Scholarship	Elizabeth Wolf-Corman Scholarship	International Aerospace Lightning Conference (IALC) Scholarship	Christine Antoinette Mead Athletic Scholarship Endowment	Software Engineering Scholarship	Cuba Gallery of Fine Art Dan Faherty	Theodore R. Amgott, M.D. Albert J. Anderson Jr.	Alexandra Bettany Eric Bever
Ocean Motions Co. Duffy's Sports Grill	Isabella's DRS RSTA Inc.	Faith (Viera) Lutheran Church	Hydro Aluminum Rockledge Intel Foundation	Civil Alumni Recruitment Endowment (C.A.R.E.)	Health First Chair in Community Health Engineering Scholarships (General)	W. Lansing and Isabelle Gleason Bisk College of Business Award	Melissa Lee Crist Honorary Scholarship	Sportfish Research Institute Endowment	Dean Mead Douglas Beam, P.A.	Emma R. Anderson Karl P. Anderson	Karen Billis Barbara E. Bingnear
Peaceful Beach Mediation Archer Daniels Midland Co. BRPH Architects-Engineers Inc.	Baker & McKenzie LLP, Attorneys at Law Bangz Hair Salon BKC of Blowing Rock dba Sister Act Boutique	Springer Science+Business Media Ace Hardware of West Melbourne Inc.	Intel Foundation	Endowment fund for Academic Programs	Environmental Education Program Endowment	Jack and Pat Pruitt Endowment	Michael Flammio Scholarship	Steve Freeman College of Business Student Support Endowment	Earth Awareness Eau Gallie Arts District EGAD Art Lab	Richard B. Anderson Scott Apeलगren Chris Arendell	John C. Bird Ramona J. Birmingham Robert K. Bissett
Charlie & Jake's Brewery Grille	Burton Braswell Middlebrooks Associates Inc.	Mako Business Solutions Inc. 8 Hearts	Mainstream Engineering Corp.	COE Endowment for Academic Programs	Eric J. Primavera ASCE Student Chapter Endowment	James Constantine College of Aeronautics Endowment	Neil Branam-Lefkove Memorial Scholarship	Steven Petrosky Memorial Scholarship	Florida Public Broadcasting Green Ridge Herbals Heart To Heart	William J. Armstrong Samuel G. Ashdown Kathleen Ashton	Diana M. Bjork William Bjork Donald G. Black
Deep South Lacrosse LLC E-Techservices.com Inc.	Middlebrooks Associates Inc. C F Matthews LLC	Mako Business Solutions Inc. 8 Hearts	San Sebastian Winery	College of Business Endowment	F. Alan Smith Visiting Executive Program Fund	James G. Kennedy Sr. Library Endowment	Northrop Grumman George M. Skurla Engineering Scholarship	SunTrust Reliance Bank Scholarship	Historic Cocoa Village Association	Barry D. Austin Winfred Autery	Daniel P. Blom Richard Boazman
G & L Laundry Centers Inc. Infinity Bike Shop	C F Matthews LLC CTJ Group	AAUW – Melbourne Branch	San Sebastian Winery	Commitment to Excellence Computer Sciences Endowment	Executive Program Fund Faculty Enhancement Endowment	Jane Gleason Madry Library Endowment	Susan Galos Eason Memorial Scholarship	SunTrust Scholarship Susan Galos Eason Memorial Scholarship	Association Space Coast Chapter Scholarship	Richard D. Awe, CPA Melinda Ayala	Beata Bockhold Ron S. Bockhold
Long Doggers Inc. Mark J. Urban, D.D.S., P.A.	Danish Interiors Decoratifs	American Electric Power Co. Inc.	San Sebastian Winery	Computer Sciences Endowment	Faculty Enhancement Endowment	Jeff Simonds Memorial Scholarship Fund	Northrop Grumman Scholarship in Engineering Studies	Susan Galos Eason Memorial Scholarship	Historic Cocoa Village Association	Margaret Azar Cynthia Babich	Mary E. Bonhomme, Ph.D. Raymond F. Bonhomme, Ph.D.
Stickhead Lacrosse of Vero Beach LLC	Fairway Management of Brevard LLC	Bergums Lawn Care Inc. Brinker International	San Sebastian Winery	Computer Sciences Endowment	Faculty Enhancement Endowment	Jeffrey Allen Dimond Memorial Scholarship	Northrop Grumman Student Design Endowment Fund	Susan Galos Eason Memorial Scholarship	Historic Cocoa Village Association	Kathy Bacsik Matt Badolato	David C. Bookman Hope A. Bookman
Society for Industrial and Applied Mathematics	Foster Women's Care LLC Glenn's Tire & Recapping Service Inc.	Cherie Thompson Interior Design Inc. City Tropics Bistro	San Sebastian Winery	Computer Sciences Endowment	Faculty Enhancement Endowment	JoAnn Morgan Women in Engineering Endowment	NorthStar Capital Management Scholarship	Susan Galos Eason Memorial Scholarship	Historic Cocoa Village Association	Janice F. Baily Mandy S. Baily-Comstock	Paul Bouvier Rodney B. Bowers, Ed.S.
Palo Alto Software Mary Kay Independent	House of Lights Indialantic Psychiatry & Counseling Center Inc.	Dyer, Riddle, Mills & Precourt Inc.	San Sebastian Winery	Computer Sciences Endowment	Faculty Enhancement Endowment	John F. Calcagni Memorial Scholarship	Numerical Control Society Scholarship	Susan Galos Eason Memorial Scholarship	Historic Cocoa Village Association	Christine M. Baker Frances Baker	Mary Bowman Steve Bowman
Refrigerated Express LLC Sonny's Real Pit BBQ	Jason Duff Construction Inc. John Morse Mounting & Laminating Supplies	Independent Imaging Consultants, P.C. JAG Enterprises & Associates Inc.	San Sebastian Winery	Computer Sciences Endowment	Faculty Enhancement Endowment	John M. Williams Fellowship Endowment	Ortega Endowment	Susan Galos Eason Memorial Scholarship	Historic Cocoa Village Association	Suzanne Baker John G. Baldwin	Carla H. Boyer Charles Boyer
Balda Development LLC Carr, Riggs & Ingram LLC	Joyal Construction Keewin Real Property Co. Kinberg & Associates LLC	US Technics Co. Wall St. Investments Inc. Your Backyard Superstore Inc.	San Sebastian Winery	Computer Sciences Endowment	Faculty Enhancement Endowment	John Thomas and Martha Hartley Scholarship	Paul Andre Hermansen Memorial Scholarship	Susan Galos Eason Memorial Scholarship	Historic Cocoa Village Association	Carol Bambara Andrew R. Bankert	Lawrence E. Boyer Clifford R. Bragdon, Ph.D.
Chevron USA Inc. Communications Concepts Inc.	Merrill Lynch Pierce Fenner & Smith Inc. Lilley Tennis Consultants	Psychological Care Center South Nova Automotive The Nature Center at the Great Outdoors	San Sebastian Winery	Computer Sciences Endowment	Faculty Enhancement Endowment	Jonathan B. Zung Family Scholarship	Paul Chell Endowment J.P. Keuper Fund COA	Susan Galos Eason Memorial Scholarship	Historic Cocoa Village Association	Thomas E. and Lois R. McNamara Scholarship	Sarah V. Bragdon Darlene Brandon
Frazier Engineering Inc. Frese, Hansen, Anderson, Anderson, Hueston & Whitehead, P. A.	Loredana T. Iannuzzo Inc. Lyondell McBride Marketing Group LLC	Psychological Care Center South Nova Automotive The Nature Center at the Great Outdoors	San Sebastian Winery	Computer Sciences Endowment	Faculty Enhancement Endowment	Joseph Caruso Family Scholarship	Paul Chell Endowment J.P. Keuper Fund COE	Susan Galos Eason Memorial Scholarship	Historic Cocoa Village Association	Van Pelt Foundation Research Endowment	Stephen E. Bankert John D. Bard, Ph.D.
Kempf's Jewelers Inc. M & A Property Management of Brevard Inc.	Photo Art Works Professional Data Storage & Delivery Inc.	Psychological Care Center South Nova Automotive The Nature Center at the Great Outdoors	San Sebastian Winery	Computer Sciences Endowment	Faculty Enhancement Endowment	John Thomas and Martha Hartley Scholarship	Paul Chell Endowment J.P. Keuper Fund COE	Susan Galos Eason Memorial Scholarship	Historic Cocoa Village Association	Wachovia Corporation / First Union National Bank Scholarship	John D. Bard, Ph.D. Pamela M. Bard
Modus Operandi Inc. National Club Baseball Association	Reid Industries Remax Interactive Realty Inc. Rep-Technology LLC	Psychological Care Center South Nova Automotive The Nature Center at the Great Outdoors	San Sebastian Winery	Computer Sciences Endowment	Faculty Enhancement Endowment	Jonathan B. Zung Family Scholarship	Paul Chell Endowment J.P. Keuper Fund COE	Susan Galos Eason Memorial Scholarship	Historic Cocoa Village Association	Walter D. and Paula LeCler Wood Scholarship	Nellie Brannan Sibert Brant
Region IX, St. Gregory the Great	New York Life Insurance Co. Photo Art Works	Psychological Care Center South Nova Automotive The Nature Center at the Great Outdoors	San Sebastian Winery	Computer Sciences Endowment	Faculty Enhancement Endowment	Joseph Caruso Family Scholarship	Paul Chell Endowment J.P. Keuper Fund COE	Susan Galos Eason Memorial Scholarship	Historic Cocoa Village Association	Warren and Evelyn Foster Scholarship	Shane A. Bardos Jeremiah Barenbruegge
River Rocks LLC Robbie Fontaine Inc.	Professional Data Storage & Delivery Inc. Reid Industries	Psychological Care Center South Nova Automotive The Nature Center at the Great Outdoors	San Sebastian Winery	Computer Sciences Endowment	Faculty Enhancement Endowment	John Thomas and Martha Hartley Scholarship	Paul Chell Endowment J.P. Keuper Fund COE	Susan Galos Eason Memorial Scholarship	Historic Cocoa Village Association	Wendell H. Colson Scholarship	Christine Barker Marcia Barnes
Strictly Foreign Inc. Susan Hall Landscape Architecture Inc.	Reid Industries Remax Interactive Realty Inc. Rep-Technology LLC	Psychological Care Center South Nova Automotive The Nature Center at the Great Outdoors	San Sebastian Winery	Computer Sciences Endowment	Faculty Enhancement Endowment	Jonathan B. Zung Family Scholarship	Paul Chell Endowment J.P. Keuper Fund COE	Susan Galos Eason Memorial Scholarship	Historic Cocoa Village Association	William and Wendy Potter College of Business Scholarship	John T. Barnett Melanie Barnett
TMT Research Development Inc.	Sandra Dee Art LLC Satellite Beach Women's Club Inc.	Psychological Care Center South Nova Automotive The Nature Center at the Great Outdoors	San Sebastian Winery	Computer Sciences Endowment	Faculty Enhancement Endowment	Jonathan B. Zung Family Scholarship	Paul Chell Endowment J.P. Keuper Fund COE	Susan Galos Eason Memorial Scholarship	Historic Cocoa Village Association	William and Wendy Potter College of Business Scholarship	John T. Barnett Melanie Barnett
West Melbourne Hotel Associates LLC	Scott's on Fifth Shea's Passion Parties	Psychological Care Center South Nova Automotive The Nature Center at the Great Outdoors	San Sebastian Winery	Computer Sciences Endowment	Faculty Enhancement Endowment	Jonathan B. Zung Family Scholarship	Paul Chell Endowment J.P. Keuper Fund COE	Susan Galos Eason Memorial Scholarship	Historic Cocoa Village Association	William and Wendy Potter College of Business Scholarship	John T. Barnett Melanie Barnett
Bengel's Burgers II LLC Leverage & Development LLC	Soundview Federal Credit Union The Register Group LLC	Psychological Care Center South Nova Automotive The Nature Center at the Great Outdoors	San Sebastian Winery	Computer Sciences Endowment	Faculty Enhancement Endowment	Jonathan B. Zung Family Scholarship	Paul Chell Endowment J.P. Keuper Fund COE	Susan Galos Eason Memorial Scholarship	Historic Cocoa Village Association	William and Wendy Potter College of Business Scholarship	John T. Barnett Melanie Barnett
Alpine Yogurt Cafe Brevard Elder Learning	Torres Mediation Services Wasdin Associates Inc.	Psychological Care Center South Nova Automotive The Nature Center at the Great Outdoors	San Sebastian Winery	Computer Sciences Endowment	Faculty Enhancement Endowment	Jonathan B. Zung Family Scholarship	Paul Chell Endowment J.P. Keuper Fund COE	Susan Galos Eason Memorial Scholarship	Historic Cocoa Village Association	William and Wendy Potter College of Business Scholarship	John T. Barnett Melanie Barnett
Designers West Interiors IEIEE	Torres Mediation Services Wasdin Associates Inc.	Psychological Care Center South Nova Automotive The Nature Center at the Great Outdoors	San Sebastian Winery	Computer Sciences Endowment	Faculty Enhancement Endowment	Jonathan B. Zung Family Scholarship	Paul Chell Endowment J.P. Keuper Fund COE	Susan Galos Eason Memorial Scholarship	Historic Cocoa Village Association	William and Wendy Potter College of Business Scholarship	John T. Barnett Melanie Barnett

Catherine C. Burton	Gable R. Costello	Samuel T. Durrance, Ph.D.	Eric Fricker	Jonathan E. Greenwood	Donna C. Hildebrand	Steve Kartholl	Stephen T. Ledford	John P. Mason	Debasis Mitra, Ph.D.	Nancy O'Leary	Linda S. Pyne-Hufnagel
William T. Burton Jr.	Evelyn C. Cotton	Ronald G. Duryea, Esq.	Susan L. Fricker	Priscilla P. Griffith	Robert C. Hildebrand	Leland C. Karuse	Drema A. Lee	Linda Mason	Andrew N. Mize	Sherlie Oliver	Matt Quint
Mark B. Bush	Stanley D. Cottrill	Patrice Dusablon	Edmund M. Fridrich	Rita L. Griffith	James E. Hilty	Celia W. Keen	George E. Lee	Karen Mathews	Jerry Moles	Wendy C. Oliver	Greg Raible
Curtis A. Byrd	Patricia M. Covill	Linnea Dwyer	Timothy Friederichs	Vincent A. Griffith Jr.	Ronald Hinebaugh	Albert B. Keet Jr.	Michelle B. Lee	Vincent A. Mathias	Susan J. Molineaux	Peggy Olson	Lynda M. Ralston
June A. Byrd	John Coyer	Timothy J. Dwyer	Paul Friedland	Sammye E. Grymes	Charles W. Hinton	Janet I. Keller	William A. Lee	Carole K. Maul	Carole K. Maul	Tom O'Shea	Joseph Ram
Rosana Byrd	Kera Coyer	Judith S. Eberle	Shirley R. Friedland	Cammie Guerin	Joseph M. Hixon IV	Jeanne P. Kelly	Mark Lefebvre	George A. Maul, Ph.D.	John S. Monaghan	Bryan Osterling	Denise Ramirez
John J. Byrnes	James Craig	Michael Eberle	Tessa Friedrichs	Gary J. Guida	James H. Hobson Jr.	Michael P. Kelly	Ann LeFevre	Patricia C. Maul	Ashlee Monk	Colleen Osterling	Hector E. Ramirez
Katherine Byrnes	Arthur Crocker	Michele F. Edgcomb	David Fries	Kevin Gulliver	Pamela D. Hobson	Sharon C. Kelly	Taylor Lengyel	Tom Mazur	David B. Montgomery	Barbara J. Oswalt, CPA	James R. Rankin
S. S. Cacciatore, Esq.	Michael Cronin	Vanessa Edkins	Thomas W. Fritz	Allison A. Gutierrez	Marianne Hoffman	Richard J. Kelosis	Frank R. Leslie	Carol H. Mazzoni	Mary June Moon	Terry D. Oswalt, Ph.D.	Mary A. Rankin
Alan Cadorin	Frank Crosby	Heidi H. Edwards	Michelle Fry	James S. Guy	Mike Hoffman	Hans C. Kemmler	Claude I. Letsinger III	Raymond M. Mazzoni	Martha Moore	Michael A. Otero	Gary Ranshous
Adrian P. Cahill	Susan P. Cross	Richard M. Edwards Jr.	James Frye	Anita Haga	Matthew W. Holladay	David D. Kendrick	David Lever	Arlene McCalla	Gerald Moores	Michael J. Otten	Deborah A. Ravel
Jonathan T. Calderon	Laurel Crowe	Novella S. Elderkin	Carla L. Funk	Lucille N. Hainsworth	Heidi Hollingsworth	Margaret A. Kendrick	Leslie J. Levitt	Ava McCalla	Albert Morgan	Gary Ouzts	Jay D. Ravel
Abbey Calhoun	Peter F. Crummeey	Heather Elko	William K. Gabrenya Jr., Ph.D.	Pamela A. Hale	William T. Holmes	Lawrence B. Kenkel, Esq.	Courtland S. Lewis	Carlos J. McCauley	Marilyn R. Morgan	Robin Pace	Brenda Raver
Peter S. Carabetta	Rosemary Cruz	Winifred Elliott	Sybil Gage	Jerry S. Hall	John R. Hooper	Mary Beth B. Kenkel, Ph.D.	Margaret W. Lewis	Ronald L. McClung	Robert J. Morgan Jr.	Ronald R. Paesano	Tracy B. Ravin
Michael T. Carey	Heather L. Cudmore	Kathleen A. Ellis	James W. Gaidry	Laurence B. Hall	Douglas R. Horde	Jerome Kerwin	James A. Liakus	Suzanne B. McClung	Jeanne Morin	Amelia R. Palacios	Helayne T. Ray, Ph.D.
Anne N. Carlson	Phyllis Curry	Mary Ellis	Irina Gallagher	Marsha G. Hall	Bradford S. Horn	Richard Kiefer	Leonard M. Lieberman	James McClure	Stan Morris	Robert J. Palazzi	Rollin Raymond
Roy V. Carlson	Dorothee A. Custer	Sean P. Ellis	Bernard D. Gallant	Elizabeth A. Halsema	Leslie M. Horn	Robert A. Killam	Fanghua Lin	Robert T. McDonald	Brenda Morrish	Clive R. Parker, CPA	William E. Redfoot
Donna Carson	Grace B. Dahmke	Laurie A. Ellison	Linda M. Gandee	Paul B. Halsema	Patrick V. Horn	Bill King	Junda Lin, Ph.D.	Leslie McElhinney	John R. Morrish	Bonnie Parks	Rex C. Redwing
Jacquelyn R. Cartwright	William B. Dahmke	Timothy Ellsworth	Linda M. Gandee	Jessica Hammett	Peggy A. Horsfield	Marcia E. King	Peter Lin	Steven W. McElwee	Mary E. Moseley	Douglas S. Parman	Jeffrey P. Reed
David I. Casey	Jacolyne A. Dale	Mary L. Elwell	Maria Gangi	Christopher Hampson	William C. Horsfield	Diane Kirschenbaum	Yekaterina A. Lin	C. W. McFarland	Marilyn Moss	Rebecca L. Parman	Susan C. Reed
Leslie J. Castaldi	Deborah Dalessandro	Charles M. Ennis	Richard A. Gangi	Theodore G. Handel	Susan F. How	Jack A. Kirschenbaum	Elizabeth M. Lindeman	Eileen McFarland	Anirude Motie	Gordon M. Patterson, Ph.D.	Todd Reese
Douglas Castle	Carl D. D'Alessandro	Laura E. Ennis	Peter M. Garceau	Peter Hankins	Scott Howell	Nora Kirschner	Kenyon C. Lindeman	Deborah A. McGauley	Ross T. Moyer	Joy B. Patterson	Larry D. Rehwoldt
Anthony J. Catanese, Ph.D., FAICP	Daniel A. Davidsohn	Elspeth A. Ensenat	Donna L. Garson	Harlan A. Hannah	Sara B. Howze	June Kirwin	Mary Ann Loafman	Donald P. McGee Jr.	Sheela Mullen	William Pauley	Mary Reiley
Sara Catanese	Anne J. Davidson	Joseph G. Eplett	Teena Gates	Chase Hansel	Gerard A. Hrenko	William K. Kirwin	Joshua A. Logan	George R. McGee	Lawrence Mulligan	Rebecca Paxton	Edward P. Reilly
Eugene S. Cavallucci	Delores L. Davie	Jack Eschenberg	Stephen J. Gaul	Phyllis E. Hansen	Gary W. Hrezo	Karl B. Kiser	Lisa Lombardo	Lynne McGee	Jerome Mullin	Mary-Jo V. Payton	Jose A. Reilova
Rebecca S. Cavallucci	William Davie	Brian Esmond	Dona E. Gaynor	John B. Harbaugh	Janet Hrezo	Susan M. Kiser	Mike K. Longman	Michael A. McGirr	B. C. Munday	Thomas H. Peake	Leonard R. Reinhart
Peggy M. Cavanaugh	Chris K. Davis	Daniel I. Faden	Thomas F. Gaynor	Pamela D. Harbaugh	Robert M. Huberman	Robert C. Klaproth Jr.	Lisa Lopez	Peter McGrath	Regenia G. Murdock	Joseph C. Pecora	Suzette M. Reinhart
Tom Cavanaugh	Jeffrey B. Dean	Mary Jo Faden	Brett B. Gelbert	Scott Harcourt	Anita L. Hudson	Jill H. Klein	Steve F. Lott	Nicholas R. McGregor	Barbara A. Murphy	Holger E. Pedersen	James R. Reis
Stephan E. Chalmers	Rafim M. Defigueiredo	Daniel P. Faherty	Keith Gelzinis	Ron Hardin	Thomas C. Hudson	Kurt Koceski	Robin Lovelock	Edward McGurk	Debra E. Murphy	Pam Pedersen	Victoria Relina
Kathy Chambers	Ranzi Delpak	Pamela Faillo	Mary A. Gelzinis	Rod L. Harding	Gregory A. Hughes	Jane L. Koke	Sarah P. Lowe-Schroeder	Eileen T. McGurk	Edward J. Murphy	Claire K. Peffer	Kenneth P. Revay, CM
Billy Chapman	Brian S. Demeyer	Richard L. Farr	Peter V. Gelzinis	Sara R. Hardy-Baloun	Sharon K. Hughes	Robert F. Koke	Mary J. Lowitz	Lee J. McIlvaine	Leslie Murphy	Stephen O. Peffer	Karen Rhine
Vickie E. Chase	Catherine C. Demeyer	Edward F. Farrell	Frank P. Genduso Jr.	Randy Harmon	James A. Hunt	Franklin D. Kolb	Christopher G. Lowrie	Roger McKay	Mary E. Murphy	Charles W. Pekar	Beverly Richards
Diane C. Chasick	Lori A. Dennis	Colin J. Farthing	Donna Gensler	Chuck Harnden	Janet I. Hunt	William Kolp	William P. Lundell	Philip W. McKee	Melissa J. Murphy	Christine S. Pepin	Gloria H. Richards
Gina M. Chastain	Fabian Denton	Lisa M. Farthing	Erik Germain	Cherie J. Harris	Thomas A. Hunt	Corey Kondas	Karen Lunden	Bruce McKibben	Robert A. Murphy	Jerome A. Pepin	Lori Richardson
Carole J. Chauncey	Sharon Denton	Dru A. Filiberto	Anjan Ghosal	William G. Harris	Kenneth G. Hurto	Theodore R. Konkel	Carol Luntz	Michael G. McKinney	Timothy E. Murphy	Frank A. Perkins	Suzanne V. Richmond
Joseph A. Chiarino	Patrick Derr	Michael W. Finn	Reena Ghosal	William R. Harris	Barbara Ida	Philip Kopala	John Luznar	Robert H. McLeran	Tina Murray	Paul C. Perryman, Ph.D.	Arnie Richter
Vanessa L. Chiarino	Fredric F. Derwitsch	Carol Fischer	Elizabeth Gibbens	Thomas J. Hart	Jeff Jacklein	John R. Kopf	Jean Lynn	Robert H. McLeran	Norton Muzzone	Shari Perryman	Ann L. Riebe
Pamela Christian	Terry L. Derwitsch	Brian G. Fisher	Kenneth P. Gibbs	Thomas J. Hart	Rick Hartwell	John E. Krause	David B. MacDonald	Courtney McMahan	Holly Myers	Joe Pet	William E. Riebsame
Kimberly J. Church	Isabelle C. Desantis	Hope L. Fisher	M. C. Giesenschlag	Chris R. Harvey	Chris Hartwell	Vernon Jackson	George A. Medlin	George A. Medlin	Keith Myers	Robin M. Petersen, Esq.	Gary A. Rief
John E. Cielukowski	Robert H. Desgrange Jr.	John G. Fisher	Peggy Giesenschlag	Chris Hauck	Chris Hauck	Roderic L. Kreger	Paula Macomber	Russell Meetze	Timothy J. Naddy	Rosalie M. Petralia	Meghan Riley
Michelle Cielukowski	Mary DeVerter	Brian Fitzgerald	Casey Gilbert	Judy B. Healy	Judy B. Healy	Christine M. Kridler	Micah Madden	Soufyane Meftah	David L. Nagrodsky	Joanne M. Pfannenstiel	Robert M. Riley
Ann M. Clark	Janet Devlin	Jere J. Fitts	Linda V. Gilbert	Patrick F. Healy	Patrick F. Healy	Gabriele Kuhn	Eleanor Maguire	Vineet Mehta	James H. Nance, Esq.	J. W. Philp	Ronald A. Rincones, USAF
William A. Clay	Sylvia Diaz	Michael J. Fladmark	Peter J. Gilbert	Howell H. Heck III, Ph.D.	Howell H. Heck III, Ph.D.	Barbara H. Kurtz	Kristen Malfara	Susan A. Melcher	James N. Nance, Esq.	Donna J. Pichon	Ret.
Charles H. Clinchard	Robert Dickinson	David C. Fleming, Ph.D.	Donna Gilsinar	John Heer III	John Heer III	William Kyte	Daniel T. Maloney	Thomas J. Melcher Jr.	Fred A. Natkin	Kenneth W. Pichon	Sheila M. Rindge
Celena Cobb	Stephen A. Dill	John Fleming	Fred Glasby	Dana K. Heimes	Dana K. Heimes	Joe Labelle	John J. Maney	Karen A. Menges	Darren Navarilli	Dale L. Pierce, Esq.	Karen T. Rinehimer
Jini Cochran	Kevin E. Dillow	Jacques Fleury	John Goldaker	Donald W. Heine	Donald W. Heine	Mary P. LaBelle	John J. Maney	Christine A. Merrill	Darren Navaroli	Eric Pike	Don F. Riordan Jr.
Barbara M. Cofer	Steven L. Dion	Gerard Forde	Maier Goldberg	Elaine S. Heine	Elaine S. Heine	James W. Lacey	William P. Manly	Jennifer Merrill	Joan Neal	Patrick P. Pilosi	John M. Ritter
Lara Anne Coffey	Matthew L. Dodds	Cynthia Forstall	Allison J. Heinen	Justin Jarac	Allison J. Heinen	Warren K. Lackie	Mark Mannarino	Katheryn Merry	Sarah A. Neilly	Winifred T. Pilosi	Nancy S. Ritter
Gloria F. Cohen	Sharon Dolan	Leslie R. Forster	Peter W. Heinen	Brian Jeffries	Peter W. Heinen	Ammi E. Lacy	Jacqueline Manning	Daniel C. Mestayer Jr.	Lisa Nemeroff	Jean-Paul Pinelli, Ph.D.	Michael E. Roach
George J. Colburn	Steve Doles	Isaac Foster	Erich Heinricher	Curtis A. Jensen	Erich Heinricher	James R. Lacy	John P. Manning	Emily Meyer	Jennifer I. Neuhard	David K. Poetker	Jeffrey C. Roberts
Cheryl A. Coletti	Jeanette M. Donaldson	Tyler R. Foster	Brooke D. Goldfarb	Daniel P. Johnson	Brooke D. Goldfarb	Paul Laderosa	Charles C. Mantle	Jay Michael	Anastasia Newman	James Poletto	Judy Roberts
James M. Colfer	Ronald Donaldson	Brian P. Fox	Elena L. Golovac	Diane M. Johnson	Elena L. Golovac	Richard H. Lambertsen	Rose Mantle	Brian Michels	Diane N. Newman	Joseph A. Pollio Jr.	Nancy H. Roberts
J. G. Collier	Jared Donboch	Betsy S. Franz	Michael J. Goodrich	Linda C. Johnson	Michael J. Goodrich	Rebecca Lambertson	Henry Manwell	Sandra L. Michelson	Martha C. Newton	Mary Elizabeth Pollio	Lyn C. Robinson
Charles E. Conrad	Elizabeth B. Donoghue	Robert F. Frazer	Michael S. Gottfried	Lisa K. Johnson	Michael S. Gottfried	Jay M. Lamy	Bruce Manzer	Richard Michetti	Hugh C. Nicolay	Conan W. Popovich	John A. Rodgaard, USNR
David E. Cook, Ph.D.	Rosemary T. Donohue	Veronica Frazier	Leslie Gould	Robert O. Johnson	Veronica Frazier	Christine P. Lance	Marie Marcinkowski	Dave Miller	Mary B. Nicolay	Dennis P. Porter	Norman Rodham
Kaycee Cook	Grace G. Doughtie	Joann M. Frederick	Michael S. Grace	Shelley F. Johnson	Joann M. Frederick	Howard L. Lance	Thomas J. Marcinkowski	Karen Miller	Clemens Nijof	Virginia C. Potter	Helene M. Roesch
Nancy E. Cook	Geoff S. Draper	John Frederick	Tanya K. Grace	Tama L. Johnson	John Frederick	Robert K. Lange	Lisa Mark	Lisa E. Miller	J. A. Nimocks	James T. Poulos	James F. Roesch Jr.
Leonard Coppold	Sharon D. Draper	Dolores J. Fredrickson	George T. Grachis	William H. Johnson	Dolores J. Fredrickson	Sherry Larue	Michael P. Mark	Marty Miller	Lorna L. Nimocks	Kathryn Povenmire	Carol D. Roffer
Frank M. Corcoran	Mandarin Drummond	Walter G. Fredrickson	Kenneth S. Graff	Cindy L. Johnston	Walter G. Fredrickson	James C. Lawler	Fred M. Markham	Ronald L. Milligan	Walter A. Nolan	Nicholas P. Preston	Jeffrey C. Roberts
William J. Corey	Helen Ducille	Michael Freeman	Sharon F. Graff	Angelo Joseph	Michael Freeman	John F. Layton III	Lynda C. Markham	Andrew Milman	Vance Norris	Sheldon Prial	Judy Roberts
Rosario P. Cornell	Marilyn Dufour	Herman C. Freund	Terry Graham	Edry Joseph	Herman C. Freund	Steven M. Lazarus, Ph.D.	Gayle P. Martin	Sherry Minervini	Wallace P. Norris	Hugh A. Pritchett	John A. Rogers
Steve Cossaboom	Ann L. Dunn	Susan B. Freund	Richard A. Gray	Anne B. Kaminski	Susan B. Freund	Nadia V. Le Bohec	Harold O. Martin III	Scott C. Minster	Erin C. O'Brien	Katrina Pritchett	Gary R. Rohrkaste
John A. Costarino	Julie Dunn	Robert Frew	Michael D. Grayson	John R. Kaminski	Robert Frew	Joseph Leacock	Katherine Martin	Francis A. Miozzi	Virginia A. Oehler	Barbara Proctor	Joan L. Rokach
	William M. Dunning	Charles L. Frey	Carl J. Greene	James W. Karl	Charles L. Frey	William F. Leahy	Michael P. Martin III	Leslie Mitchell	Omer C. Oktar	James A. Proctor Sr.	Joshua Rokach
	Louann Durfee	Robert Frey	Mariam A. Greene	Dennis F. Karr	Robert Frey	Joan B. Leake	Steven M. Martin	Margie Mitchell	Jere C. Proctor	James A. Proctor Sr.	Christopher Roll
										Jere C. Proctor	Joan E. Roll

Sandra Roll
 Carol F. Romano
 Kathleen J. Roohan
 Carol R. Rosasco
 James E. Rosasco
 Debrah L. Rosenglick
 Frances Rosenzweig
 Alice E. Ross
 Frederick B. Rotz
 Philip M. Rouzer
 Robert Rusk
 Doreen M. Russell
 Gail B. Ryan
 Thomas J. Saam
 John A. Saathoff
 Rafael Salcedo
 Beverly H. Sanders
 Mark S. Sanders
 Deborah A. Sands
 Robert R. Sands
 Yolanda Santini
 Lisa Saturday
 Gretchen A. Sauerman
 Allyn R. Saunders, CPM
 Brian D. Saunders
 Laurie Saunders
 Anthony Scaramouche
 Russell W. Schaad
 Carol Schiff
 Jeffrey M. Schiff
 Faye Schill
 Mimi Schlutermann
 Tina M. Schmeisser
 Robert P. Schmidt
 Suzanne M. Schoemmer
 Clifford W. Schoonmaker
 Donna L. Schoonmaker
 Joan L. Schoonmaker
 Lillian Schreiber
 Alfred Scortino
 David Scott
 Roy Scott
 Winston E. Scott
 Anne M. Scanton
 Peggy Seibert
 Kathryn L. Seidel
 Troy Seiler
 Ann H. Sepri
 Paavo Sepri, Ph.D.
 Lucille Serody
 Robert I. Serody
 David Settgest
 Donna J. Sewell
 Susan H. Seybold
 Muzaffar A. Shaikh, Ph.D.
 Kevin Shannon
 Lisa Shepperd
 Carrie Sherwood
 Kulcha Shok
 Judith Siegler
 Douglas E. Siemers
 Mary Siemers
 Jolann M. Simciak
 Walter C. Simciak
 James D. Simmons

Holland Simms
 Brian E. Simpson
 Daniel R. Simpson
 David Simpson
 Karen E. Simpson
 Pamela D. Sims
 James A. Sisserson, Esq.
 Joanne Slattery
 Michael C. Slayton
 Cecil B. Smith
 Hampton O. Smith
 James R. Smith
 John M. Smith
 Gail A. Snively
 Lisa Souto
 Tony Spadafora
 Timothy Spainhour
 Gregory H. Spake
 Jane R. Spake
 Gary S. Spanke
 D. B. Spath
 Brian T. Spatola
 Karen L. Speed
 Kerry T. Speed
 David F. Speer
 Anita N. Sperling
 Alice Spinelli-Culbreth
 Frank D. Spino Jr.
 Philip J. Spletter
 Ann E. Spurlin
 Steve A. Spurlin Jr.
 Elizabeth L. Stamper
 Michael Stamper
 Elizabeth Stansifer
 Gary W. Stark
 Paula Steere
 Jennifer Stein
 Lee Stein
 John Schreiber
 Raymond Stelz
 Dan B. Stephens
 Shayne Stockstill
 Thomas S. Stokes
 James J. Storms, USA Ret.
 James F. Stottlar
 Calvin Stow
 Duane Straub
 Stacy S. Strickland
 Dan Sundberg
 Alan G. Sutcliffe
 David Svatik
 Sharon L. Swaby
 Bradley Swain
 Barbara A. Switzler
 Thomas D. Switzler
 Margaret Symulevich
 Richard A. Szelag
 Joan Taddie
 Pete Taddie
 Ramez O. Tadros
 John J. Talone Jr.
 Christian Tamburr
 Janice E. Tannehill-Spino
 Douglas M. Taylor
 Elaine N. Taylor

Jerry Taylor
 Scott Taylor
 Vicki Thacker
 Albert M. Thomas
 Patricia Thomas
 Paula E. Thomas
 Roger W. Thomas
 Shirley Thomas
 Nancy A. Thompson
 Nancy M. Thompson
 Edward W. Thomson
 Paul Thomson
 Rick Thornburg
 Linda Thorpe
 Darcy Thursby
 Michael H. Thursby
 Kevin A. Tinsley
 Elliot N. Tompkins
 Sue A. Tompkins
 James M. Torpey
 Joann B. Torpey
 Tim Tracey
 Darryl B. Trapp
 Anita J. Travis
 Roger N. Travis
 John H. Trefry
 Susan P. Trefry
 Lynn Tremaine
 Robert E. Treverton
 William J. Troy
 Tim Troyer
 Kathryn L. Trunzo
 Ronald P. Trunzo
 Jean E. Tucker
 Bartel F. Turk
 Robert D. Turner
 Debora K. Tweedie
 William J. Tweedie
 Deborah F. Tweten
 Jason S. Tyson
 Dennis F. Ufnar
 Janice Unger
 Paul V. Unger
 Tom L. Urquhart Jr.
 Suzanne M. Valencia
 Eric Van Dam
 Sandra Van Woesik
 John A. Van Workum
 Sharon Van Workum
 Joseph V. Vandeville
 Mark D. Vanstrum
 Carlos Vargas
 Garry M. Varnes Jr.
 Joyce D. Vass
 Michelle J. Verkooy
 David M. Vincent
 Kathleen A. Vittitoe
 Eric Voelkel
 Peter Volkert
 Betsy Vosburgh
 David A. Vosburgh
 Mary Votel
 Daniel Wagman
 Jerry L. Wagner
 Lea A. Waldrep

Dinah Walker
 Michelle Walker
 Peggy J. Walker
 W.T. Walker
 Evert C. Wallenfeldt
 Mary E. Wallis
 Abigail Walters
 Yue-Eng Wang
 Jay Warshowsky
 Johanna L. Waterhouse
 Michael Watts
 Wayne E. Weber
 Susan H. Webster
 Rudolf J. Wehmschulte
 Margaret E. Weiss
 Michael K. West, PE, Ph.D.
 Ian Westerfield
 Theresa Wheatley
 Jay R. Wherley
 John E. White
 Rob White
 Wendy White
 William C. Whitehead
 Patti Whitlock
 Richard Whitmore
 Robert E. Wiley
 Jodee C. Wilfong
 Robert C. Wilfong
 Beth Wilkerson
 Marjorie A. Will
 Charles Willett
 Daryl D. Williams
 Fredrick J. Williams
 Mari Williams
 Timothy M. Williams
 George R. Willis
 Andrew Wilson
 Carolyn P. Wilson
 Kimberly R. Wilson
 Louis Wilson
 Maurianna J. Wilson
 Rasta M. Wilson
 Carl A. Winebarger
 Dollene M. Winget
 Jeffrey A. Winget
 Joseph Winters
 Alicia Wojcik
 John L. Wolcott
 Jacqueline F. Wolf
 James J. Wolf
 Jennifer Wolf
 Steven J. Wolf
 Meghan Wolfram
 Franklin B. Wolking
 Renee Wong
 David B. Wood
 Desire' Wood
 Matthew A. Wood
 Theresa A. Wood
 Daniel Woodard
 John R. Woods
 Cathy Woolsey
 Amelia J. Worth
 Bonnie S. Worthy
 Chris Wouralis

Douglas G. Wright
 M. C. Wright
 Terri L. Wright
 Diane Wuebbenhorst
 Michael Wuebbenhorst
 Marlinda Wyatt
 D'Alta Y. Yacoub
 Nazieh K. Yacoub
 Thomas Yardley
 Dale R. Yeager
 Denise L. Young
 John H. Young Jr.
 Jamie A. Younkin
 John L. Younkin
 Diane Zabel
 Hank Zakhari
 Deborah Zeit
 Frederick A. Zeit
 Marijane Zimmerman
 Connie Zonka
 Jeff Zorovich
 Beverly Zygmunt
 AIA Professional Window
 Cleaning
 Accurate Archery of
 Melbourne, Inc.
 Address N' Mail
 Amazon.com
 Beachside Software, Inc.
 Big Spoon Caribbean Cuisine
 Brevard Optometry
 Associates
 Bryan's Landscaping, Inc.
 Commercial Investment
 Real Estate, Inc.
 Custom Flooring
 Installations, Inc.
 EGAD! Art Lab
 Emma's Flowers
 Environmental Systems
 Exodus Unisex Salon
 Finn Cabinetry, Inc.
 Florida Bulb & Ballast, Inc.
 Flytec
 Hazel's Caribbean Restaurant
 Hoshino Therapy of
 Melbourne
 iContact
 Indian River Irrigation
 Systems, Inc.
 Maple Street Natives
 Mary's Awesome Leather
 Nance Cacciatore Hamilton
 Barger Nance Cacciatore
 Northwestern Mutual Life
 Ins.
 Paragon Printing &
 Graphics
 Rainbow Distributing (IHB)
 Randy's Tile Floors & More,
 LLC
 Roof Repairs Only, Inc.
 Salon Visionz
 Skyline Home Repair

Space Coast Progressive
 Alliance, Inc.
 Spacecoast Freewheelers
 Bicycle Club, Inc.
 Steel Beet, Inc.
 The Tolland Inn
 Verizon Foundation

share your news!

Submit your Alumni News Notes to alumaffr@fit.edu

David Velinsky '77 was recently named the department head for Drexel University's new Biodiversity, Earth and Environmental Science (BEES) academic program. He also serves as vice president for Environmental Research, Director and Senior Scientist at the Patrick Center for Environmental Research and is the Section Leader for Biogeochemistry at the Academy of Natural Sciences of Drexel University (America's oldest natural history museum and a world leader in biodiversity and environmental research).



1970s



Ethel Maxam Crews '70 published a novel, *The Don Quixote Girls*, with Karlene Conroy under her pen name Mia Crews. The novel is available in paperback or as an e-Book at Amazon.com and Barnes & Noble. Learn more at www.donquixotegirls.com. Besides being a proud Florida Tech graduate, Ethel is mom to alumna **Tiffany Crews Loris '93** and sister to **Elinor Madigan '91** Ph.D. Ethel's writing partner, Karlene, is also a proud FIT mom to **Brian O'Hagan '95**. Ethel and Karlene serve as co-leaders of the Florida Writers Association Melbourne Group.



M.B. Adelson '79 M.S., '82 MBA, recently earned an LL.M. from FSU College of Law. Mr. Adelson continues to practice environmental and natural resources law, land use, property and business law in Tallahassee.

1980s

After medical school in Houston and residency in Boston, **Michael Doherty '82** performed cardiac anesthesia for 10 years in Manchester, NH. He is married to Lucy.

1990s

John Gontkof '95, '01 M.S., embarked on a mini "Amazing Race"-type adventure with his family in August. Over two and a half weeks, they visited Paris, Helsinki, Dusseldorf, Dubai, Amsterdam and Calcutta—where Gontkof worked in 2010 as part of IBM's Corporate Services Corps and featured in the winter 2012 issue of *Florida Tech TODAY*. He returned with his wife and stepdaughter to further contribute to two nonprofit organizations—**Iswar Sankalpa** (www.isankalpa.org), which provides help to the mentally ill homeless on the streets of Calcutta, and **Calcutta Social Project** (web.calcuttasocialproject.net), which provides schools for children in slum areas.



Sunita Williams '95 M.S., a record-setting astronaut who lived and worked aboard the space station for six months in 2006, is supporting a long duration mission as flight engineer for Expedition 32 and International Space Station commander for Expedition 33, scheduled for completion in November. Williams and her colleagues are aboard the station during a period that includes two spacewalks, the arrival of Japanese, U.S. commercial and Russian resupply vehicles, and an increasingly faster pace of scientific research. Williams is now the world's most experienced female spacewalker.



After the birth of their twin daughters, Hailey and Hannah, the family moved to the town of Dublin to raise their children and enjoy life. Recently, Mike has performed volunteer work in Colombia repairing cleft lips and palates for poor children.

Dean T. Kent '83 EMBA will be retiring Oct. 1, 2012, from his position as vice president, human resources, at Emerson in St. Louis, Mo., after a 29-year career. Kent was recruited to Emerson after completing his MBA in 1983. He was in the first Executive MBA program at Florida Tech. **Roger Manley** was the department chair at the time.

FIT friends **Nelson Cambata '78**, **Clarke Fowler '80** and **Deborah Heystek '79** attended the 24 Hours of Le Mans, the world's oldest active sports car race in endurance racing, held annually near the town of Le Mans, France. They were supporting Jordan Taylor, driver of the Corvette #73 car (GTE Pro class).



(Top right) Cambata with Wayne Taylor (Wayne Taylor Racing) and his son Jordan Taylor. (Middle) Heystek in front of the Audi Tower in the Le Mans village. (Bottom right) Clarke Fowler.

Continued on page 60

Continued from page 59

Martin Schmidt-Bremer Jr. '96, '99 M.S., and wife Melissa welcomed daughter Julia on Dec. 11, 2011. Julia is already crawling at 6 months and loves playing with her brother Patrick who cannot do wrong in her eyes.



Carlos E. Otero '99, '01 M.S., '07 M.S., '09 Ph.D., is an assistant professor in the College of Technology and Innovation at the University of South Florida. He published his first textbook, *Software Engineering Design: Theory and Practice*, in June.

2000s

Andrew Condon '05 and wife Renee welcomed their first child, Amy, Sept. 7, 2011. Andrew received his Ph.D. in coastal engineering from the University of Florida in December. He currently works for the Naval Research Lab at Stennis Space Center in Mississippi as a postdoctoral researcher in ocean dynamics and predictions branch.



James Latimer '05 and wife Myriam welcomed baby girl Isabella Jolie Latimer on April 1, 2011. She weighed 7 lbs., 0 oz., and measured 20.5 inches. James and family reside in Sugar Land, Texas.



James works for Derek Consulting Group at Houston Bush Intercontinental Airport and is a Fighter Crew Chief in the 147th Reconnaissance Wing, Texas Air National Guard, at Ellington Field.

Gregory K. Walker '06 of the Defense Acquisition University has completed 23 years of federal service. He was commissioned a Second Lieutenant on May 18, 1996, and completed his service commitment on Aug. 8, 1999. He has served as an area manager for Amazon.com, a contract specialist for the U.S. Army, a lead logistician for the U.S. Army, and currently serves as a professor of logistics with a Demonstrated Master Logistician credential. Walker received his degree from Florida Tech's Huntsville campus. He is married to Major Rosalind Y. Walker (U.S. Army) and has four children, Senior Airman Gregory L. Walker (U.S. Air Force),



Corporal Martin J. Walker (U.S. Army), Maya E. Walker, and 18-month-old Luke Sky Walker.

Mike Piazza '09 and **Melissa (Reinders)** were married on Jan. 14, 2012, in Port St. Lucie, Fla. Both former FIT varsity athletes, Melissa and Mike met at Florida Tech in 2006. Mike was a starting baseball pitcher, and Melissa was on the volleyball team. Piazza was voted Florida Tech's Male Scholar-Athlete of the Year in 2008-09 and signed with the Los Angeles Angels in 2009. Melissa graduated from the University of Central Florida in 2010 with a degree in communication.



Calling all Panther Cubs!

Congratulations! If you've recently welcomed a new Panther Cub to your family, contact us for your **free infant T-shirt**. Your only obligation is to send us a photo of your baby wearing the shirt—we will proudly display it in *Florida Tech TODAY*.

Email hrosskam@fit.edu to receive your shirt.

Jennifer Gillette '10, '12 MBA, played this summer for the Chesapeake Charge in Maryland. The Charge is a member of the Women's Premier Soccer League, an independent national league representing the highest level of women's amateur soccer in the United States.



Faculty/Staff

Quiana Bradshaw '10 M.S., adjunct faculty member for Florida Tech University Online and a doctor of computer science candidate, welcomed daughter Nicole on March 23, 2010. Quiana, husband Edward and baby Nicole currently reside in Goldsboro, N.C.



Joseph Sinkiewicz '08 was recently awarded the Distinguished Flying Cross, a U.S. Army honor awarded for heroism or extraordinary achievement while participating in aerial flight. Sinkiewicz, an Apache pilot, is based out of Fort Drum, N.Y. He recently finished a yearlong tour in Afghanistan with other FIT graduates: **Randall Renneisen** '08 (Blackhawk Pilot), **Jeff Shadwick** '08 (Kiowa Pilot) and **Ben Jackson** '04 (Chinook Pilot). Pictured are Captain Ben Jackson '04 and wife Lauren (Walker) Jackson '04 on left. Captain Joseph Sinkiewicz '08 and girlfriend Mel Rego '09 on right



In Memoriam.

Colin Bateman, adjunct instructor of physical science for Florida Tech University Online, was killed in a bicycle crash on July 24. Colin was an energetic athlete, a dedicated educator and a friend who brought joy to many.

Tom Eschenberg '86 M.S., '87 MBA, who served as the mayor of the Town of Malabar since 2004, died in June after a short bout of cancer. Eschenberg earned two master's degrees from Florida Tech and spent 39 years of his career working at Harris Corp.



Longtime university supporter **Martha Hartley** passed away on July 14. The generosity of Martha and Jack Hartley, university trustee, is evident all across the campus. Events take place daily in the Hartley Room. Many students earn a top-notch education with the financial assistance of the John Thomas and Martha Hartley Scholarship. Their support made possible Hartley Hall, one of three residence halls in the Harris Village complex.

Llewellyn (Lew) Henson III, who served as Florida Tech's second library director, died in May. Henson led the library from 1971 to 1994. In the early 1980s, he played an important role in guiding the construction of the Evans Library. Those who knew him will recall his impish smile and management style "by walking around" and listening to people, said university historian **Gordon Patterson**.



V. Lakshmikantham, Ph.D., former head of the department of mathematical sciences, passed away June 7, 2012. He retired in 2010 after serving at Florida Tech for more than 20 years. His five decades of dedicated scholarship and service left a deep impact in the world of non-linear mathematics.



Richard Michael Librizzi '89 M.S. passed away on May 30 in Chantilly, Va., at the age of 49. Librizzi received a M.S. in computer science from Florida Tech and was most recently employed by the Software Engineering Institute of Carnegie Mellon University in Pittsburgh, Pa.

Forrest McCartney, former director of Kennedy Space Center, passed away July 18 in Palm Bay. He was the fourth director of KSC, serving from October 1986 through 1991, taking the reins just months after the 1986 Challenger disaster. McCartney served on the Florida Tech board of trustees from November 1988 to October 1998 and received an honorary doctorate degree in 1986.



Clifford Alan Peterson '83 EMBA, 76, of Melbourne Beach, Fla., and Madison, Conn., passed away on March 28. He was an alumnus of the first graduating class of the College of Business' Executive MBA program and sponsored a number of Dictaphone managers in following his

in that program. He served as a founding member of the College of Business Board of Overseers, a judge at the annual High School Business Ethics Competition and as chairman of the Executive Board of the College of Business Center for Ethics and Leadership. He also supported and encouraged his sons in their pursuit of graduate and undergraduate degrees at Florida Tech.

Thomas Peake, emeritus faculty in the School of Psychology, who retired in 2007, passed away Sept. 11. "Tom was a vital part of the School of Psychology for many years and was known throughout the university for his scholarly work, collegial manner, genuine caring and gentle wit," said Dean **Mary Beth Kenkel**.

Florida's Poet Laureate **Edmund Skellings**, 80, passed away on Aug. 19. He retired from Florida Tech last April, after serving as professor of humanities in the College of Psychology and Liberal Arts since early 2008. Skellings was nominated for the Nobel Prize in Literature and the Pulitzer Prize. He was selected from among more than 400 other Florida poets to earn the title of Poet Laureate in 1980. Appointed to the lifetime honor by former Gov. Robert Graham, he authored seven books of poems. The Skellings archives reside at Florida Tech and are accessible online at <http://research.fit.edu/edmundskellings>.



YOU CAN'T WEAR YOUR DIPLOMA.



Let your Official Ring work for you.

For more information, please visit us online or call 1-866-BALFOUR (866-225-3687).

Balfour
www.balfour.com



Bino Campanini '90, '92 MBA
Assistant Vice President for Alumni Relations
Executive Director,
Alumni Association

Q: Homecoming is fast approaching. How do things look?

Last year's homecoming celebration was a huge success, and this year's homecoming is shaping up to be even bigger and better! The FTAA has partnered with the Student Government Association, and together we are building a platform to improve homecoming over the coming years. I am positive our alumni will have a great experience if they come to campus. The establishment of a football program has injected a new energy and enthusiasm for homecoming, which will only increase once the official games start next year.

Q: What can we expect at Homecoming 2012?

Many events will be happening on and around campus. Highlights include Homecoming Fest on Friday night in downtown Melbourne. This inaugural street party will feature food, drink and live entertainment topped off with a concert by national act The Mighty Mighty Bosstones. The opportunity to partner with

our local business community to create a marquee event with great appeal to our students and alumni is something we are extremely pleased about. Saturday will feature a 5K campus run, the homecoming parade, a barbecue/ tailgate followed by an intra-squad football scrimmage. In the evening, the FTAA will host the Homecoming Awards Gala in the Clemente Center. For a full schedule of events, folks can visit our Homecoming website <http://homecoming.fit.edu>.

Q: Where will the football scrimmage be held?

The game will be played at Panther Field, next to the new Varsity Training Center on the south end of campus. Even though it is an intra-squad scrimmage, Coach Englehart told me it will be played like a regular season game, so it should be a great opportunity to see what Panther football is all about. The good thing is that no matter what happens the Panthers will win!

Q: Last year the Homecoming Awards Gala sold out?

Yes, last year the gala was a huge success with 420 attendees. We are confident we will sell out again this year. The Homecoming

Awards Gala showcases the very best of Florida Tech's alumni with the presentation of Outstanding Alumni Awards in each college as well as the GOLD (Graduate of the Last Decade) Award and the Jerome P. Keuper Distinguished Alumni Award. Of course, it is also a fun night with a cocktail hour where alumni can mingle with the administration and faculty and entertainment after the awards program. Tickets are \$75.

Q: How is the Gleason "Name A Seat" Campaign going?

Very well! Vic Ross '90 has agreed to chair the campaign. All alumni in our database will receive a letter from the FTAA outlining the campaign and why we've taken on this challenge. We hope our alumni will take the time to read the material and consider being part of the 500. As our campaign chair has stated, "we may not be able to put our name on a building but we can put it on a seat."

Gleason

NAME A SEAT

Campaign

"We have all been in Gleason at one time or another, and this is a great opportunity to be part of the ongoing improvements on campus. We may not be able to have our name on a building, but we can have our name on a seat. Join me and be part of the 500."

Vic Ross III, Class of 1990
Chair of the Gleason "Name a Seat" Campaign

alumni.fit.edu/gleasonseats

AL-651-812



Who are these College Players?

Cast of the 1985 winter quarter performances, "Plots" and "Soon to be a Major Motion Picture"—
Can you identify these thespians? Email fltechtoday@fit.edu.



Florida Institute of Technology

Office of Marketing and Communications
150 W. University Blvd.
Melbourne, Florida 32901-6975

Homecoming 2012

Going for the Gold

Awards Gala
Dinner ★ Music Dancing

*Join us for a red carpet celebration
of Florida Tech and its Alumni!*

Saturday, November 3

**Clemente Center
on the Florida Tech campus**

See Schedule on Page 14

For more information:

Bino Campanini, Office of Alumni Affairs

bcampanini@fit.edu • (321) 674-8434 • <http://homecoming.fit.edu>

ALG 02 2012

FOOTBALL ON THE FIELD

**FANS FILL THE
CLEMENTE CENTER
AND PACK PIRATE
STADIUM!**

PAGE 23



MK-657-812