



Hibiscus

New foliage colors and better habits prove there's more to them than their huge blooms

BY RICHARD HAWKE

Few perennials are as flamboyant as hibiscus. Their flowers can be up to 10 inches wide or larger, which is inconceivable for something that's not tropical. Hibiscuses have been in gardens for a long time, but with all the recent enhancements in flower colors and sizes, foliage shapes and hues, and compact habits, they're not the same as grandma's plants anymore. Although I think they're fun and the perfect antidote to fussy landscapes, my impression is that people either love them or hate them. The gigantic flowers are exotic and charismatic to some, while others find them too big and garish.

Their size isn't the only thing that's not subtle. They put their sex right in your face: The male and female reproductive parts are held on long bottlebrushes that protrude from the centers of the flowers with a bright red bull's-eye marking the base of the column. Many older selections are more plant than flower, but newer cultivars have been bred to be indeterminate. The result is more flowers from tip to toe and a longer bloom period, which is the case with the following favorites from our trial.

► At a glance

Hibiscus spp. and cvs.

USDA HARDINESS ZONES: 5 to 9

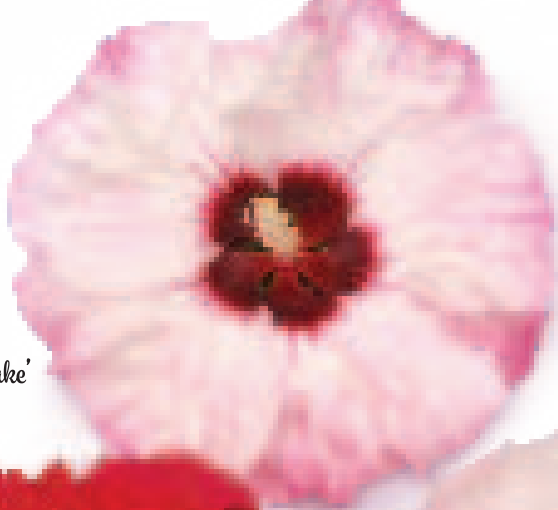
CONDITIONS: Full sun to partial shade; moist, well-drained soil

BLOOM TIME: Mid- to late summer through early to midfall

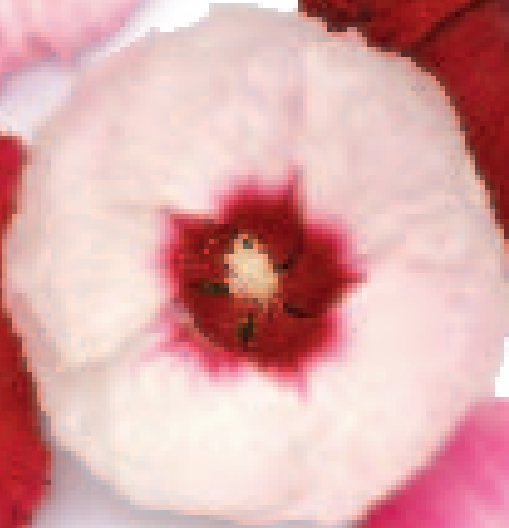
PROPAGATION: From cuttings off new growth, from seeds, or by division in spring

MAINTENANCE: A late-spring pinching can force plants to have a bushier habit

*'Cherry
Cheesecake'*



'Heartthrob'



*'Perfect
Storm'*



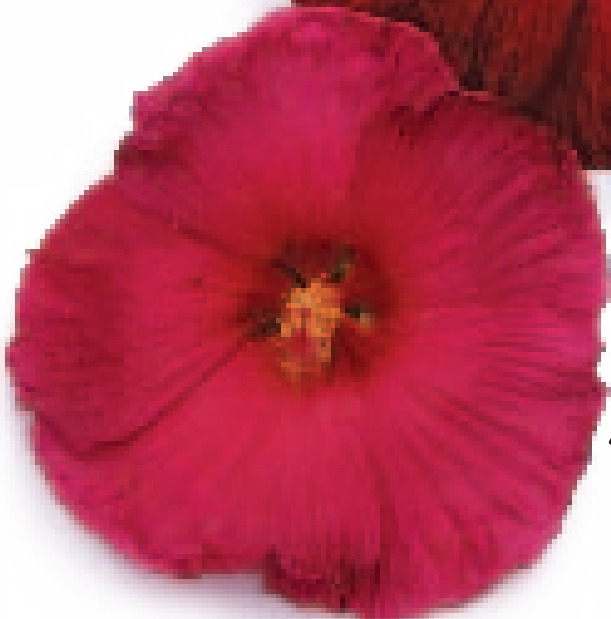
*'Plum
Fantasy'*



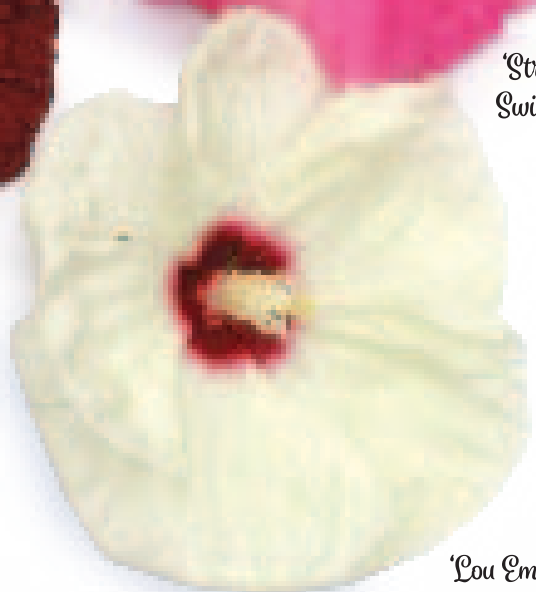
*'Strawberry
Swirl'*



*'Vintage
Wine'*



'Snowflake'



'Lou Emmons'

Top performers



When ‘Cranberry Crush’ bloomed for the first time, I was immediately captivated by the boldness of its deep scarlet-red flowers—the color is so intense that the red eye is barely discernible at the center of the slightly cupped petals. Equally fun are the nearly black flower buds that swell like balloons before opening. The maplelike leaves start a shiny deep bronze but turn dark green with purple overtones later in the season. ‘Cranberry Crush’ received high marks for its great flower show, dense rounded habit, and reliability, but to be honest, the vivid flowers could be plunked on a stick and I’d still be crazy about this plant.

CULTURE QUIRKS

Keeping these plants healthy and happy doesn’t take much effort. Rusts, leaf spots, and stem and crown rots can be problems. Here are a few other things to note about their nature.

FLOWERS



The blooms—either flat or slightly cupped—have broad overlapping petals that may be puckered or ruffled, making them look a bit like crepe paper. The delicate petals are deeply etched with veins, which are sometimes a different color, and the red spot at the center varies in intensity. The flowers are fleeting. Each blooms for only one day, but flowers open in succession over many weeks.

HABIT



Hibiscuses are bushy plants with shrublike proportions, ranging from a few feet to more than 7 feet tall. Whether taller than wide or as wide as tall, stems are typically strong enough to stay upright no matter the height.

FOLIAGE



The classic leaf is broadly oval with a few shallow lobes, but many cultivars feature maplelike leaves (photo above), which are strongly lobed to deeply dissected. Leaves can be simply green or blushed with shades of purple, burgundy, or bronze. While these accents may fade quickly, some of the newest cultivars stay deep burgundy or purple all summer long. Leaf margins, veins, and petioles as well as stems often show some red to burgundy, too.

PRUNING



Stems can be cut back in fall or spring; it’s best to leave some stubs to mark their location because hibiscuses emerge pretty late in the spring.



Objectivity is key to a fair trial, but it's too easy to have favorites. Right now, it's **'Heartthrob'**. The deep blood-red flowers with darker black-red eyes are irrepressibly seductive, while the whopping 9-inch flowers only heighten the allure. The oval-shaped leaves and stems are green at all times—it's like there was no more color to spare! 'Heartthrob' makes a neat, compact bush about as tall as wide, which you'll appreciate all summer but probably won't give much thought to once the flowers pop.



With voluptuous scarlet-red flowers, dark burgundy foliage, and a robust rounded habit, **'Midnight Marvel'** might just have it all. Its slightly cupped flowers are as vibrant as 'Cranberry Crush', while the maplelike leaves are darkly brooding. 'Midnight Marvel' holds its leaf color for most of the season but dims to bronze-purple in midsummer and is half green by early fall. I find the touch of yellowish green at the base of the leaves quite fetching but wish 'Midnight Marvel' also had the striking yellow-green terminal leaves of the cultivar 'Summer Storm'. Like so many of the new selections, 'Midnight Marvel' is very long blooming and handsome at every stage.

DEADHEADING



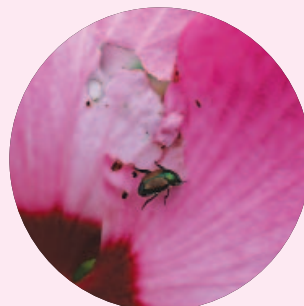
Since each flower lasts for just a day and is so large, deadheading might be crucial for neat freaks. In dry weather, the large flowers fall cleanly from the sometimes chartreuse calyxes. But if the flowers are wet when they drop, they turn mushy and stick to the leaves in an absolutely detestable way. I've certainly peeled my share of soggy flower carcasses off the leaves to improve the display.

FLEA BEETLES



These tiny, shiny black insects can be easily overlooked until you notice little shot holes on the leaves. The damage is a minor cosmetic issue at best, but in severe cases, hungry flea beetles can turn a leaf into a sieve. Interestingly, the shot holes are less noticeable on purple or burgundy foliage than on green-leaved plants. Diatomaceous earth is a nontoxic way to help kill them off.

JAPANESE BEETLES



Japanese beetle damage was less prevalent on our hibiscuses, likely because local beetle populations have gone down in recent years. The damage can be considerable due to their voracious appetites, leaving behind skeletonized leaves and flowers. Handpicking is an effective, albeit gross, control option.

SAWFLY



Hibiscus sawfly larvae can be an issue, too, and generally first appear on the underside of the leaf and begin feeding. In a couple of days, these caterpillar-looking creatures will turn the leaves of the hibiscus into skeletonized lace. Organic horticultural oils can help kill off some of the offenders.

Top performers

▶ Trial parameters

Since 1989, the Chicago Botanic Garden has evaluated 64 different hibiscuses in three separate comparative trials.

DURATION: A minimum of four years.

ZONE: 5b

CONDITIONS: Full sun; well-drained, alkaline, clay-loam soil.

CARE: We provided minimal care, allowing the plants to thrive or fail under natural conditions.



'Berrylicious'—I love when a clever name is paired with a terrific plant. The pretty mauve-lavender flowers are a departure from the usual hibiscus color palette and are bountiful for nearly three months. Bright green maplelike leaves make the perfect backdrop for the 8-inch ruffled flowers, which bloom on all sides of the bushy plant. At 50 inches tall, 'Berrylicious' isn't exactly small but lands somewhere between short and tall, for a hibiscus anyway. 'Berrylicious' is a perennial favorite of visitors to the Chicago Botanic Garden and has been one of the most consistently strong performers.

Photos, except where noted: Danielle Sherry; Carol Collins (bottom right, p. 35)



NEW KIDS ON THE BLOCK

1. The magenta-red flowers of **'Mars Madness'** may well be a nod to the red planet itself—their vibrancy is certainly unlike any of the other red-flowered cultivars we grew. Each lovely blossom is 6 to 8 inches wide with broad overlapping petals, but you'll have to look closely to see the slightly darker red eye. The large maplelike leaves are distinctly burgundy in spring, fading to dark coppery green in summer. And there's plenty of time to enjoy the handsome foliage because 'Mars Madness' begins blooming in late summer. It's a bushy plant—3 feet tall last year—but we expect it to reach 4 feet tall and at least 6 feet wide over time.

2. **'Mocha Moon'** shares a passing resemblance in leaf color and shape to 'Mars Madness', but its maplelike leaves are more bronze than burgundy. And that's where the similarities end. Pure white flowers—to 8 inches wide—feature bright red eyes that bleed vividly into the overlapping petals. In midsummer, the combination of the luminous white flowers and bronze leaves is distinctive and eye-catching. 'Mocha Moon' has a compact, bushy habit of 4 feet tall and wide.



'Super Rose' was one of the stars of our first trial way back in the early '90s (somewhere, there's an awkward photograph of a flower stuck behind my ear for size comparison). The vibrant rosy pink flowers with darker pink veins are bountiful for more than two months; 'Super Rose' held the title for being the most floriferous cultivar in that trial. And at nearly 5 feet tall, the flowers are borne up high where they can't be missed—if it's even possible to overlook a 9-inch-wide flower! Unlike newer cultivars, 'Super Rose' bloomed at the tips of the stems only.



I would be over the moon about **'Party Favor'** even if it never bloomed. The green, deeply dissected maplelike leaves are wonderfully textural and all the more striking against the red stems. The large scale of the plant—more than 4 feet tall and 5 feet wide—doesn't seem as imposing due to the refined quality of the foliage. You can enjoy the foliage show for a long time because 'Party Favor' begins blooming later than most cultivars and keeps flowering nearly to frost. The enormous blossoms have bright pink petals irregularly streaked with red and dotted with a red eye. The flowers may come late but are always plentiful.



3. 'Berry Awesome' has been in the trial for just two years but has had a good run so far. The lavender-pink flowers with dark red eyes are pretty and plentiful. At 7 inches wide, the flowers are at the lower end of the size range but are produced for a long time. The dark green maplelike leaves start out bronzy purple and hold some color all summer. 'Berry Awesome' has a compact habit of 4 feet tall and wide with nice red stems. The smaller plant size fits well in a variety of gardens.

4. 'Perfect Storm' was on my radar from the very start. Its dark burgundy leaves—a mix of maplelike and oval shapes—are exceptionally colorful. The flowers look pink from a distance but are actually white with a pink blush and sport an especially large bright red eye. So far, the flowers have been just shy of 6 inches but should get to be 8 inches wide in time. Chartreuse calyces pop against the dark foliage and are notable before and after flowering. At 3 feet tall, 'Perfect Storm' is a truly compact hibiscus that will appeal to gardeners who like drama in a smaller package.



Richard Hawke is plant trials manager at the Chicago Botanic Garden.

Hibiscus

• TRIAL RESULTS •

RATING KEY
 ★★★★★ Excellent
 ★★★★ Good
 ★★★ Fair
 ★★ Poor
 ★ *Plant height includes flowers.

RATING	HIBISCUS	HEIGHT	WIDTH	FLOWER COLOR	FLOWER WIDTH	LEAF COLOR AND SHAPE
★★★	'Anna J. Hemming'	63 inches	30 inches	Red	7 inches	Green, maplelike
★★★★	'Berrylicious'	50 inches	60 inches	Mauve-lavender, red eye	8 inches	Green, maplelike
★★	'Bordeaux'	32 inches	32 inches	Red	9 inches	Green, oval
★★★	'Brandy Punch'	48 inches	48 inches	Light pink, darker veins, red eye	8 inches	Green and burgundy, maplelike
★★	'Bright Eyes'	43 inches	56 inches	White, pink blush, red eye	8 inches	Green, oval
★★★	'Brilliant Cerise'	64 inches	64 inches	Purple-red	10 inches	Green, oval
★★★★	'Candy Stick'	44 inches	64 inches	Red	9 inches	Dark green
*	'Chablis'	33 inches	42 inches	Pure white, pink blush	8 inches	Green, oval
★★	'Cherry Brandy'	52 inches	50 inches	Cherry red	10 inches	Green and burgundy, maplelike
★★★	'Cherry Cheesecake'	45 inches	36 inches	White, pink blush, red eye	7 inches	Green and bronze, maplelike
★★	'Cinnamon Grappa'	52 inches	40 inches	Deep red	9 inches	Green, maplelike
★★★★	'Cranberry Crush'	50 inches	56 inches	Deep scarlet-red	8 inches	Green and purple, maplelike
★★	'Forbidden Pleasure'	60 inches	48 inches	Deep red	7 inches	Green, deeply dissected
*	'Grenache'	30 inches	36 inches	Deep pink, red eye	9 inches	Green, oval
★★★★	'Heartthrob'	43 inches	41 inches	Deep red, blackish eye	9 inches	Green, oval
*	'Intense Pink'	82 inches	48 inches	Pink	6 inches	Green, oval
★★	'It's My Party'	46 inches	52 inches	Light and dark pink, red eye	8 inches	Green, oval and maplelike
★★★	'Jazzberry Jam'	55 inches	62 inches	Deep magenta, red eye	9 inches	Green and bronze, oval and maplelike
*	'Lewis Beck'	55 inches	60 inches	Pink	9 inches	Green, oval
★★★★	'Midnight Marvel'	48 inches	48 inches	Deep red	8 inches	Burgundy, maplelike
★★	'My Valentine'	47 inches	45 inches	Deep red	8 inches	Green, maplelike
★★★★	'Party Favor'	51 inches	60 inches	Medium pink, red eye	9 inches	Green, deeply dissected
★★★	'Peppermint Schnapps'	68 inches	48 inches	Pink, red streaking, red eye	8 inches	Green, oval and maplelike
★★	'Pinot Grigio'	30 inches	41 inches	White, purple blush, red eye	9 inches	Green, oval and maplelike

**	'Pinot Noir'	40 inches	41 inches	Purple-red	9 inches	Green, oval and maplelike
***	'Plum Fantasy'	48 inches	46 inches	Magenta	9 inches	Green and purple, deeply maplelike
***	'Red Cutleaf'	44 inches	48 inches	Rose-red	9 inches	Green and purple, maplelike
***	'Sleeping Beauty'	66 inches	55 inches	White, pink blush, red eye	6 inches	Green, oval
**	'Snow Queen'	45 inches	60 inches	White, red eye	10 inches	Green, oval
***	'Sultry Kiss'	55 inches	59 inches	Magenta-red	10 inches	Green and purple, maplelike
***	'Summer Storm'	54 inches	66 inches	Light pink, red eye	9 inches	Burgundy and green, maplelike
**	'Tie Dye'	50 inches	52 inches	Bright pink, red eye	9 inches	Green, maplelike
***	'Turn of the Century'	84 inches	54 inches	Light pink and pink-red, red eye	6 inches	Green, oval
**	<i>H. moscheutos</i> 'Blue River II'	22 inches	16 inches	Pure white	7 inches	Green, oval
***	<i>H. moscheutos</i> 'Clown'	63 inches	65 inches	Pink and white, red eye	7 inches	Green, oval
****	<i>H. moscheutos</i> 'Crimson Wonder'	67 inches	70 inches	Deep rose	9 inches	Green, oval
****	<i>H. moscheutos</i> 'Dave Fleming'	50 inches	52 inches	Rosy magenta	9 inches	Purple and green, deeply maplelike
**	<i>H. moscheutos</i>	52 inches	60 inches	Red, dark red eye	8 inches	Green, oval
**	<i>H. moscheutos</i> 'James Fleming'	42 inches	48 inches	Bright pink	9 inches	Purple and green, deeply maplelike
**	<i>H. moscheutos</i> 'Lester Riegel'	54 inches	60 inches	Pink, red eye	8 inches	Green, oval
***	<i>H. moscheutos</i> 'Lord Baltimore'	83 inches	46 inches	Crimson red	8 inches	Green, maplelike
**	<i>H. moscheutos</i> 'Lord's Pink'	53 inches	40 inches	Pink	8 inches	Green, oval
***	<i>H. moscheutos</i> 'Lou Emmons'	55 inches	48 inches	Creamy white, red eye	7 inches	Yellow-green, maplelike
*	<i>H. moscheutos</i> 'Pink Elephant'	48 inches	40 inches	Pink, dark red eye	10 inches	Green, oval
***	<i>H. moscheutos</i> 'Pink Giant'	80 inches	70 inches	Pink and white, red eye	7 inches	Green, oval
****	<i>H. moscheutos</i> 'Poinsettia'	64 inches	65 inches	Deep rose	8 inches	Green, oval
**	<i>H. moscheutos</i> 'Radiation'	67 inches	60 inches	Pink, red eye	10 inches	Green, oval
**	<i>H. moscheutos</i> 'Ruby Dot'	62 inches	58 inches	White, pale ruby eye	9 inches	Green, oval
***	<i>H. moscheutos</i> 'Snowflake'	46 inches	62 inches	Cherry red	10 inches	Dark green, oval and maplelike
***	<i>H. moscheutos</i> 'Stardust'	44 inches	60 inches	Bright pink, red eye	9 inches	Green and purple, maplelike
**	<i>H. moscheutos</i> 'Strawberry Swirl'	46 inches	52 inches	Medium and pale pink, red eye	9 inches	Green, oval and maplelike
***	<i>H. moscheutos</i> 'Super Rose'	54 inches	60 inches	Rosy pink, red eye	9 inches	Green, oval

SOURCES

Davidson Greenhouse & Nursery, Crawfordsville, IN; 877-723-6834; davidsongreenhouse.com

Garden Crossings, Zeeland, MI; 616-875-6355; gardencrossings.com

Plant Delights Nursery, Raleigh, NC; 919-772-4794; plantdelights.com