



Achillea tomentosa 'Lemon' (aka 'Lemon Yellow Form')
Yarrow (Code: 2020)
 Lovely lemon yellow flowers are set off by ferny, evergreen foliage. Excellent in rock gardens or as a groundcover. (3-4" x 16") Zn4.



Aegopodium podagraria 'Variegatum'
Bishop's Weed (Code: 2040)
 This vigorous, carefree groundcover has attractive cream and green-variegated leaves. It looks best when grown in partial shade in moist soil, but it will tolerate almost any growing condition. (6-10" x 12") Zn3.



Allium cernuum
Nodding Onion (Code: 2047)
 Lavender-pink, nodding flower heads are an excellent addition to the rock garden. It may naturalize under optimum conditions. (18" x 9") Zn3.



Allium tuberosum
Garlic Chives (Code: 8060)
 A mild onion & garlic flavor enhances this herb's versatility. Flattened grassy foliage is topped with attractive edible white flowers. (18" x 12") Zn3.



Anemone tomentosa 'Robustissima'
Grape Leaf Anemone (Code: 2097)
 Soft-pink flowers 3" across bloom profusely on long stems in late summer and fall. This robust grower is the hardiest fall-blooming anemone. (3-4' x 3') Zn4.



Anemone x hybrida 'Pamina'
Japanese Anemone (Code: 2088)
 Deep rose-colored, semi-double flowers rise above elegant foliage in late summer and fall. Excellent for cut flowers and easy to grow. (24-36" x 24") Zn5.



Arrhenatherum elatius bulbosum 'Variegatum'
Bulbous Oat Grass (Code: 2153)
 Short, bright white and green-striped foliage is topped by pure white seedheads in summer. It makes a nice spreading groundcover where temperatures are moderate. (12" x 24-36") Zn5.



Arum italicum
Italian Arum (Code: 2136)
 Glossy-green, spear-shaped leaves are marbled with silver and appear in late winter. Flowers are not showy, but are followed by upright stalks of bright orange-red berries in summer. The foliage may go dormant in summer. (12" x 24-36") Zn7.



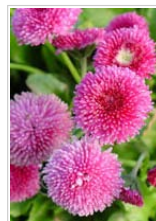
Astilbe chinensis 'Pumila'
False Spirea (Code: 2222)
 This dwarf, spreading perennial has lavender-pink spikes from July to September. It will form a groundcover in moist shade. (8-12" x 18-24") Zn3.



Bellis perennis 'Pomponette Mix'
English Daisy (Code: 5773)
 Miniature, double daisies in red, pink, and white bloom profusely for many weeks in spring. Biennial. (4-6" x 12") Zn4.



Bellis perennis 'Pomponette Red'
English Daisy (Code: 2263)
 Shades of rose-red double daisies with yellow centers cover bright green foliage in spring. A colorful accent for rock gardens. Biennial. (4-6" x 12") Zn4.



Bellis perennis 'Pomponette Rose'
English Daisy (Code: 5772)
 Rose-hued, double daisies cover bright green foliage in spring. A colorful accent for rock gardens. Biennial. (4-6" x 12") Zn4.



Blechnum spicant
Deer Fern (Code: 7488)
 This NW native, tufted fern has compact, symmetrical, lustrous evergreen fronds. A "Great Plant Pick" for the Pacific Northwest, it is an essential ingredient for the natural woodland garden, as either an accent plant or groundcover. (16" x 24") Zn5.



Borago officinalis
Borage (Code: 8315)
 Edible, bright blue, star-shaped flowers top coarse, fuzzy leaves. Flowers have a mild cucumber flavor. Add to salads or freeze in ice cubes for punches. A favorite of bees! (2' x 2') Zn10.





Campanula portenschlagiana

Bellflower (Code: 5476)

This vigorous evergreen creeper bears large clusters of open, violet-blue, bell-shaped flowers that bloom for months. Drought tolerant, it's a "Great Plant Pick" for the Pacific Northwest. It will re-seed and naturalize to form a small colony. (4" x 24") Zn4.



Campanula punctata 'Cherry Bells'

Bellflower (Code: 6527)

Full bells of cherry-pink, neatly edged in white, dangle along the stems of this spreading cottage garden favorite. The flowers are wonderful for summer bouquets! (20-30" x 24") Zn4.



Carex morrowii 'Ice Dance'

Variiegated Sedge (Code: 6653)

Dark green leaves with white edges form arching mounds of evergreen foliage. It will spread to form a groundcover that's easy to control. A "Great Plant Pick" for the Pacific Northwest! (12" x 18") Zn5.



Carex morrowii 'Silver Sceptre'

Sedge (Code: 4752)

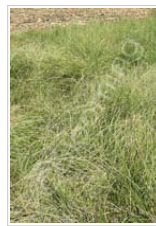
Green leaves with silver-white edges form dense, creeping tufts. Pale and wispy flowers appear in late spring. An excellent evergreen groundcover among Hostas, ferns or bamboo. (18" x 42") Zn6.



Carex nigra 'Variegata'

Variiegated Sedge (Code: 6297)

Light green blades to 12" are softly edged in yellow. This vigorous groundcover is good for partial shade. It will also tolerate drier soils. (12" x 18") Zn5.



Carex subfusca

Rusty Sedge (Code: 7419)

This native western US sedge is found everywhere from the sea to the desert. Low growing with narrow, upright, dark green leaves, it spreads to form a low maintenance lawn or groundcover. Easy to grow in almost any situation. (4-10" x 18-36") Zn5.



Carex tumulicola

Berkeley Sedge (Code: 6823)

Very narrow bright green blades form evergreen clumps. Use as a groundcover under trees or in moist areas. It reseeds readily. Native to the Pacific Northwest. (12" x 18") Zn7.



Chasmanthium latifolium

Woodland Sea Oats (Code: 2374)

Clusters of flattened, nodding spikelets top arching stems. The attractive seedheads persist through winter. In the Pacific Northwest, it needs a sunny site that stays moist in summer. Despite the name, it is not a dune grass. (3' x 2-3') Zn5.



Convallaria majalis

Lily of the Valley (Code: 2420)

Clusters of extremely-fragrant, dainty white bell-shaped flowers adorn this old-fashioned favorite in spring. It spreads freely to form a low maintenance groundcover under deciduous trees. (6-10" x 24-36") Zn3.



Convallaria majalis 'Rosea'

Lily of the Valley (Code: 6010)

This carefree groundcover has dainty, fragrant, pink bell-shaped flowers in spring followed by tiny orange berries. (6-10" x 18-24") Zn3.



Cymbalaria aequitriloba

Kenilworth Ivy (Code: 3035)

Pretty soft blue snapdragon-like flowers cover this dainty groundcover in spring and summer. It forms a completely prostrate mat that makes a nice addition to any shady woodland garden. (1" x 6") Zn6.



Deschampsia caespitosa

Tufted Hair Grass (Code: 5161)

Attractive arching green blades are topped with large, pendulous panicles which turn from green to yellow through the season. It grows best when temperatures are moderate. (2-4' x 3') Zn4.



Deschampsia caespitosa 'Fairy's Joke'

Tufted Hair Grass (Code: 6219)

Arching slender green leaves sport tiny plantlets at the tips in place of seeds. The inflorescences are weighted down by the plantlets, and can root if contacting soil. (2-4' x 3') Zn4.



Deschampsia caespitosa 'Northern Lights'

Tufted Hair Grass (Code: 4214)

Glowing green and white-striped leaves take on a pink blush in cool weather and when new. It has a nice clumping habit with airy flower panicles that appear in summer. (12" x 12") Zn4.





Deschampsia caespitosa 'Schottland'
Tufted Hair Grass (Code: 4212)
 Huge, light & airy flower panicles rise 3' above evergreen blades, providing an enjoyable display from early summer through winter. The evergreen foliage looks best when temperatures are moderate. (3' x 2-3') Zn4.



Deschampsia flexuosa 'Aurea' ('Tatra Gold')
Crinkled Hair Grass (Code: 5715)
 Finely-textured, arching, golden foliage tufts are topped by nodding purple-tinged panicles in June and July. Lovely specimen for the border or woodland garden. It performs best in rich soil and partial shade. (20" x 12") Zn4.



Dicentra formosa 'Adrian Bloom'
Western Bleeding Heart (Code: 4544)
 One of the best blue-green dicentras, with fern-like foliage. It has contrasting crimson-red flowers strung on short stalks. A sweet accent for the shade garden. (12" x 8-12") Zn3.



Digitalis grandiflora 'Carillon'
Foxglove (Code: 3342)
 This compact foxglove blooms an unusual shade of yellow with tawny freckles. Thick, leathery foliage adds interest to this cottage garden favorite. (18-20" x 18") Zn3.



Digitalis purpurea 'Alba'
Foxglove (Code: 5034)
 Tall and graceful stems are lined with white bell-shaped flowers. Beautiful for the back of the border or as a stately accent, it glows at dusk and shimmers in the moonlight! Biennial. (3' x 2') Zn4.



Digitalis purpurea 'Apricot'
Foxglove (Code: 5035)
 Tall and graceful stems are lined with pink-to-apricot, bell-shaped flowers. It's beautiful for the back of the border or as a stately accent and nice for bouquets too. Biennial. (36" x 24") Zn4.



Digitalis purpurea 'Camelot Lavender'
Foxglove (Code: 3795)
 Spectacular lavender, bell-shaped flowers with speckled throats shine on stout stems. A nice subtle fragrance enhances its appeal. Biennial. (36-48" x 16-24") Zn4.



Digitalis purpurea 'Camelot Rose'
Foxglove (Code: 3796)
 Lovely rose-hued, bell-shaped flowers with speckled throats shine on stout stems. Subtle scent. Biennial. (3-4' x 2") Zn4.



Digitalis purpurea 'Camelot White'
Foxglove (Code: 3800)
 Large, fragrant flower spikes show off pretty white, bell-shaped flowers with speckled throats. Biennial. (3-4' x 2') Zn4.



Digitalis purpurea 'Excelsior Hybrids'
Foxglove (Code: 2579)
 Long spires of flowers in shades of pink, rose, or white grace this attractive cottage garden favorite, May to June. Excellent for cut bouquets! Biennial. (4-5' x 2-3') Zn4.



Digitalis purpurea 'Foxy Hybrids'
Foxglove (Code: 2575)
 Long spikes of lovely flowers in shades of carmine-red, pink, creamy-yellow or white grace this cottage garden favorite. It is excellent for cut flowers. Biennial. (24" x 18") Zn4.



Digitalis purpurea 'Gloxiniiflora'
Foxglove (Code: 5417)
 Extra large, rose-red bells dangle from tall, sturdy stalks. This beautiful background plant is easy to grow and great for cut flowers. Biennial. (48" x 30") Zn4.



Digitalis purpurea 'Pam's Choice'
Foxglove (Code: 4258)
 This compact foxglove has large white blooms with brilliant purple-red throats! A good cut flower and wonderful in the middle of the flower border. Biennial. (30" x 24") Zn4.



Digitalis x mertonensis
Strawberry Foxglove (Code: 2583)
 Strawberry-colored, bell-like flowers bloom on tall stalks. It makes an excellent cut flower. (24-30" x 18-24") Zn5.



Euphorbia 'Blue Lagoon'
Spurge (Code: 6130)
 Blue-green foliage has red tinged new growth. Clouds of gold hang over plants for months. As it will naturalize, it's perfect for hard to grow, dry areas and slopes. (18-30" x 24") Zn6. PP14572 Propagation Prohibited.



Euphorbia amygdaloides var. robbiae
Robb's Spurge (Code: 6017)
 Handsome deep green leaves are offset by cinnamon-red stems and are topped by panicles of chartreuse bracts in spring. This excellent, spreading evergreen groundcover tolerates dry sites and blends well with a wide assortment of plants. (1-2' x 3') Zn6.



Euphorbia characias ssp. wulfenii
Mediterranean Spurge (Code: 2658)
 Large clusters of showy chartreuse bracts adorn this large-growing evergreen form from March to June. A "Great Plant Pick" for the Pacific Northwest! (3' x 3') Zn6.



Euphorbia cyparissias 'Fen's Ruby'
Cypress Spurge (Code: 3268)
 Very finely-textured leaves emerge ruby-red and fade to bluish-green. The leaves are topped in summer by heads of chartreuse flowers. It naturalizes to form a groundcover. (8-12" x 18-24") Zn5.



Euphorbia griffithii 'Fire Charm'
Spurge (Code: 4100)
 Bright red-orange bracts top red stems in spring. Green and burnt-orange summer leaves turn to vivid orange and red for an extended fall show of color. (2' x 3') Zn5.



Foeniculum vulgare 'Smokey'
Bronze Fennel (Code: 6519)
 Dark bronzy-purple clouds of delicate foliage is topped by large flower umbels. Foliage, seeds and stems have a wide variety of culinary appeal. Attracts butterflies too! (5' x 3') Zn5.



Fragaria 'Lipstick'
Strawberry (Code: 6270)
 Beautiful deep rose flowers top this glossy-leaved evergreen groundcover, in late spring to early summer. (4" x 24") Zn2.



Fragaria chiloensis
Beach Strawberry (Code: 5005)
 This NW native, glossy-leaved, prostrate strawberry makes an excellent evergreen groundcover that is tolerant of many different conditions. Simple white flowers in spring are followed by edible red berries. (4" x 24") Zn4.



Fragaria vesca
Woodland Strawberry (Code: 7270)
 North American native deciduous woodland groundcover with 3 leaflets and white flowers in spring followed by small, sweet strawberries in summer. (2-4" x 18-24") Zn3.



Galium odoratum
Sweet Woodruff (Code: 8263)
 Dainty white flowers bloom in profusion in spring above whorled foliage. It makes a superb low growing, spreading groundcover for shade. (2-4" x 24-36") Zn4.



Gaultheria procumbens
Wintergreen (Code: 2690)
 Elegant, North American native, evergreen groundcover for moist, well-drained, shaded areas. Tiny white bell-shaped flowers in spring produce red berries in fall with the taste of wintergreen. (2-3" x 24") Zn3.



Gaultheria shallon
Salal (Code: 6347)
 Pacific Northwest evergreen groundcover or low spreading shrub that tolerates dry shade to full sun. Urn-shaped white flowers appear in spring and produce dark purple edible berries. Salal leaves are often used by florists. (18-30" x 24-36") Zn6.



Hakonechloa macra
Japanese Forest Grass (Code: 4327)
 Delicate bamboo-like foliage graces this slow-spreading, non-invasive grass. The foliage takes on a reddish-pink cast in fall, turning to bronze in winter. A "Great Plant Pick" for the Pacific Northwest! (12-24" x 16") Zn5.



Hakonechloa macra 'Albostriata'
Japanese Forest Grass (Code: 4540)
 Creamy-yellow striped blades in spring fade to white in late summer. It forms a nicely-rounded mound. This vigorous grower is a "Great Plant Pick" for the Pacific Northwest! (18" x 30") Zn5.



Hakonechloa macra 'All Gold'
Japanese Forest Grass (Code: 5220)
 Beautiful lime-green and bright gold blades form a delicate soft mound. A stunning grass that moves in the slightest breeze. It grows best in moderately moist soil and full sun. A "Great Plant Pick" for the Pacific Northwest! (10" x 24") Zn6.



Hesperis matronalis
Dame's Rocket (Code: 2844)
 Tall, loose flowers of lavender, purple, or white, bloom from May to June and give off an intoxicating evening fragrance. The long stems are excellent for bouquets. Biennial, but naturalizes. (36" x 16") Zn5.





Houttuynia cordata 'Chameleon'
Chameleon Plant (Code: 2896)
 This fabulous foliage accent for shade has vivid red, yellow, and green leaves that are adorned with white flowers from June to August. It may spread where conditions are favorable. (4-6" x 36") Zn5.



Imperata cylindrica 'Red Baron'
Blood Grass (Code: 2913)
 The brilliant red leaf blades are even more iridescent when back-lit by the autumn sun; especially when planted en masse. This short grass prefers moist areas. (WA and OR only) (18" x 12") Zn6.



Iris ensata
Japanese Iris (Code: 6813)
 Graceful, upright, sword-shaped leaves with distinct raised mid-rib. Large flowers on 4' stems range in colors of purple, violet, pink, rose, red or white often edged in a contrasting shade. (2-4' x 2') Zn4.



Juncus patens
Common Rush (Code: 7832)
 Green, graceful knee-high arching foliage with brown flowers then seed heads from May to Nov. Loves wet feet but can tolerate dry to drought conditions once established. Native from WA to CA. (2-3' x 2-3') Zn6.



Leymus (Elymus) condensatus 'Canyon Prince'
Dune Grass (Code: 2692)
 This medium-sized gray-blue grass has erect flower stalks that rise 1-2' above the foliage and are topped with spikes of wheat colored blooms. Drought tolerant and evergreen, it spreads by rhizomes, but is not invasive. (2-3' x 2-3') Zn7.



Leymus arenarius 'Findhorn'
Lyme Grass (Code: 6911)
 The lovely stiff, metallic blue-gray leaves will spread by means of underground rhizomes. It is excellent for banks and erosion control. (2' x 3') Zn4.



Liriope muscari 'Big Blue'
Lilyturf (Code: 3046)
 Spreading, grass-like foliage is topped by grape hyacinth-like flower spikes in late summer. It makes an excellent evergreen groundcover. (8-10" x 18") Zn6.



Liriope muscari 'Silvery Sunproof'
Lilyturf (Code: 6603)
 Leaves are green and white-striped in filtered sun, more green and yellow in shade. Lilac flower spikes appear late in the season. Spreads to form a low maintenance groundcover. (12-18" x 30-36") Zn6.



Liriope spicata 'Silver Dragon'
Lilyturf (Code: 4747)
 Long, grass-like green leaves are striped with ivory. Light lavender flowers in late summer are followed by black berries in fall. (18-24" x 12") Zn5.



Lysimachia ciliata 'Purpurea'
Fringed Loosestife (Code: 3087)
 Deep burgundy-purple leaves provide striking foliage color in winter and spring. Delicate yellow flowers are borne in airy clusters on stalks in summer. It will spread vigorously with ample moisture. (24" x 36") Zn5.



Lysimachia clethroides
Gooseneck Loosestife (Code: 3090)
 Gracefully-arching spikes of white flowers appear in summer and are adored by butterflies. This cottage garden favorite is wonderful for cut flowers. It will spread to form a colony. (24-36" x 24-36") Zn4.



Mahonia nervosa
Cascade Oregon Grape Holly (Code: 7266)
 This low-growing NW native evergreen shrub spreads by rhizomes to form thickets. The evergreen leaflets have toothed edges and resemble holly foliage. Fragrant pale yellow flowers bloom in spring followed by blue berries in summer and fall. (18-24' x 2-4') Zn5.



Mahonia repens
Creeping Oregon Grape (Code: 6963)
 Compound evergreen leaves look similar to holly. It forms a low-spreading groundcover with fragrant, small, yellow flowers that bloom from mid spring to early summer at the branch tips. This NW native is an excellent choice for dry shade. (12" x 30-36") Zn5.



Maianthemum kamschaticum
May Lily (Code: 6348)
 In spring, creamy-white flowers adorn this pretty spreading, native North American groundcover, followed by small red berries in summer. Easy to grow and useful for colonizing shady places. (12" x 24") Zn4.





Mazus radicans 'Albiflorus'
Swamp Musk (Code: 5346)
 This groundcover forms a dense, flat carpet of bright green. White flowers with a creamy-yellow throat, give brightness and color in spring and summer. (2-4" x 24-36") Zn5.



Mazus reptans
Creeping Mazus (Code: 5523)
 Lavender flowers speckled with yellow top a bright green foliage mat. An excellent accent for the rockery, between pavers, or borders. Spreads quickly. (2" x 24") Zn5.



Melissa officinalis 'All Gold'
Golden Lemon Balm (Code: 5665)
 Ornamental and useful herb with clean lemon flavor and fragrance. Wonderful for salads, garnish, or teas. The multi-toned, golden foliage brightens shady areas. (18" x 24") Zn4.



Mentha piperita citrata
Orange Mint (Code: 8109)
 Bronzy foliage has a refreshing orange-mint flavor and scent. Wonderful for teas, salads, and potpourri. (Restricted in some areas) (2' x 2-3') Zn3.



Mentha pulegium
Dwarf Pennyroyal (Code: 8150)
 Fresh green foliage forms a dense, weed-proof mat. Highly recommended as a groundcover in large, shady areas where mowing is difficult. It is also a natural mosquito and flea repellent. (Restricted in some areas) (6-12" x 18") Zn7.



Mentha requienii
Corsican Mint (Code: 8122)
 Tiny bright green leaves tightly hug the ground, and bear light foot traffic well. Leaves emit a fresh, minty fragrance when crushed, making it perfect between pavers. (Restricted in some areas) (12" x 12") Zn6.



Mentha spicata 'Crispa'
Curly Spearmint (Code: 8118)
 Decorative, round crinkled leaves and snappy spearmint flavor make this a must for any herb garden. Excellent in iced drinks! (Restricted in some areas) (2' x 2-3') Zn3.



Mentha spicata 'Moroccan'
Moroccan Mint (Spearmint) (Code: 4284)
 This hardy herb is well-known for its very fragrant, clear spearmint flavor. Excellent culinary herb for teas, salads and sauces. (Restricted in some areas) (2' x 2') Zn5.



Mentha spicata 'Spanish'
Spanish Mint (Spearmint) (Code: 5930)
 Abundant dark green, wrinkled leaves are highly aromatic. A wonderful addition to iced or hot teas. Vigorously spreads to form a large clump. (Restricted in some areas) (24" x 36") Zn4.



Mentha spicata 'Spearmint'
Spearmint (Code: 8115)
 Dark green foliage has a fresh spearmint fragrance & flavor for culinary use in teas. Leafy spikes display purple-hued flowers in summer. Excellent when used dried or fresh. (Restricted in some areas) (28" x 24-36") Zn3.



Mentha suaveolens
Apple Mint (Code: 4387)
 This attractive, fragrant and upright growing herb is a terrific addition to the culinary garden. Light green foliage contrasts nicely with light purple-pink blooms midsummer. Hardy and easy to grow. (Restricted in some areas) (24" x 18") Zn5.



Mentha x piperita 'Chocolate'
Chocolate Mint (Code: 5386)
 This tasty mint contains just a hint of chocolate. Bronzy new leaves grow vigorously along red-hued stems. Use dried in teas, chocolate desserts and baking. (Restricted in some areas) (18-24" x 24-36") Zn3.



Mentha x piperita 'French Peppermint'
French Peppermint (Code: 8117)
 This popular culinary herb has the best clean peppermint flavor, making it perfect for numerous culinary and medicinal uses. Excellent for teas and dries beautifully. (Restricted in some areas) (28" x 24-36") Zn3.



Mimulus cardinalis
Scarlet Monkey Flower (Code: 3115)
 Scarlet-orange, snapdragon-like flowers have yellow throats. This Pacific Northwest native is loved by hummingbirds and blooms all summer. Performs best in part shade with moist soil. (14" x 24") Zn6.





Myosotis sylvatica 'Alba'

Forget-Me-Not (Code: 3133)

Clouds of white Forget-Me-Nots shine above green foliage, making this plant an adorable companion for all those spring-flowering bulbs. Biennial. (9" x 12") Zn3.



Myosotis sylvatica 'Rosea'

Forget-Me-Not (Code: 3134)

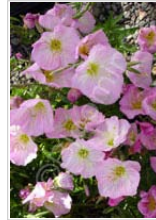
Clouds of pink forget-me-nots shine above green foliage, making this a wonderful little companion plant for spring-flowering bulbs. Biennial. (9" x 12") Zn3.



Nassella (Stipa) tenuissima

Mexican Feather Grass (Code: 3690)

Silky creamy-gold inflorescences undulate like waves with any breeze. This marvelous grass contributes grace and elegance to the garden or container. (2' x 2') Zn7.



Oenothera speciosa 'Siskiyou'

Evening Primrose (Code: 5284)

Showy translucent pink blossoms shine all summer on this compact, vigorous perennial that is easy to care for. (12" x 24") Zn5.



Oenothera speciosa 'Twilight'

Evening Primrose (Code: 4986)

Deep purple-bronze variegated leaves have green edges with pale pink, saucer-like flowers in summer. The purple foliage color is more prominent in cool weather. (12" x 24") Zn5. PP17230, COPF Propagation Prohibited.



Oxalis crassipes 'Alba'

White Wood Sorrel (Code: 3094)

Sparkling white, single flowers rise above a clumping mound of shamrock foliage. Blooms appear spring through summer. It's perfect beneath shrubs. (6-8" x 18-24") Zn6.



Oxalis oregana

Redwood Sorrel (Code: 5473)

This charming NW native shamrock features simple white flowers in spring and summer. A sweet addition for the woodland garden, it will spread to form an excellent groundcover. (7" x 30") Zn3.



Petasites japonicus 'Giganteus Variegatus'

Japanese Coltsfoot, Butterbur (Code: 5893)

Enormous round green leaves have irregular and extensive cream-colored variegation. In early spring before the leaves emerge, terminal blossoms appear on flower spikes with small green leaf-like bracts. It will naturalize to form a colony. (3' x 3') Zn5.



Phlox stolonifera 'Blue Ridge'

Woodland Phlox (Code: 3298)

Dainty, pretty blue flowers grace this floriferous woodland groundcover. A charming evergreen selection for a naturalized setting. 1990 Perennial Plant Association Plant of the Year. (6" x 12") Zn4.



Phlox stolonifera 'Home Fires'

Woodland Phlox (Code: 3302)

Masses of fragrant, deep pink flowers top low and spreading, evergreen foliage in spring. A wonderful easy to grow, floriferous variety for part shade. 1990 Perennial Plant Association Plant of the Year. (8" x 12") Zn4.



Pleiblastus pygmaeus

Dwarf Green Bamboo (Code: 2110)

Vigorous, spreading underground rhizomes produce upright woody stems with grassy-green culms. Great as a groundcover in woodland or oriental landscapes. (3' x 5') Zn6.



Polygonatum biflorum

Solomon's Seal (Code: 3337)

Arching single stems feature dangling clusters of chartreuse, bell shaped blossoms in spring. Blooms become black berries in late summer. An excellent companion for ferns, Hostas, and hellebores. (24" x 8") Zn3.



Polygonatum biflorum 'Prince Charming'

Solomon's Seal (Code: 7260)

Arching stems of blue-green leaves no taller than 12" start the spring with many pairs of creamy white flowers. In fall purple berries are followed by golden yellow fall color. Can tolerate full sun with moist, well-drained soil but prefers part shade. (8-12" x 24-36") Zn3. PPAF



Polygonatum odoratum 'Variegatum'

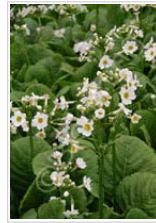
Variegated Solomon's Seal (Code: 3339)

Fragrant white flowers top arching stems of silver-edged leaves in spring. This woodland favorite has a nice creeping habit that is simply stunning when it forms a colony. A "Great Plant Pick" for the Pacific Northwest. (24" x 12") Zn4.





Polygonum odoratum
Vietnamese Coriander (Code: 6439)
 Fragrant white flowers top arching sprays of green leaves edged in silver. It's beautiful in mass plantings or in woodland gardens. Excellent for culinary use. (2' x 1') Zn8.



Primula japonica 'Alba'
Japanese Primrose (Code: 6517)
 Pure white flowers are arranged in whorls up tall, graceful stalks in summer. A gorgeous selection for the shade garden. (12-18" x 12") Zn5.



Primula japonica 'Miller's Crimson'
Japanese Primrose (Code: 3366)
 Bright crimson-red flowers are arranged in whorls up tall, graceful stalks in spring making it a gorgeous selection for the shade garden. A "Great Plant Pick" for the Pacific Northwest! (20" x 12") Zn5.



Primula veris 'Sunset Shades'
Cowslip Primrose (Code: 4057)
 This fragrant primrose has blooms in sunset colors of oranges, reds and yellows, that appear on short stems. It adds a spot of bright color to the shade garden and will naturalize in moist shade. (8-10" x 10") Zn2.



Saxifraga stolonifera 'Maroon Beauty'
Strawberry Geranium (Code: 4879)
 Showy rounded, reddish-green leaves with silver veins. Airy sprays of white flowers appear in early summer. It will politely colonize to make a beautiful groundcover. (12-18" x 15") Zn6.



Silene uniflora 'Druett's Variegated'
Alpine Campion (Code: 6452)
 Distinctive cream and silver-variegated, glaucous leaves, are topped by white blooms in summer. The evergreen foliage is tinged pink in cool weather. (2" x 12") Zn3.



Sisyrinchium bellum
Western Blue-eyed Grass (Code: 3555)
 Violet-purple flowers with yellow centers arise above thin, iris-like foliage in spring. It requires well-drained soil. Native to the Pacific Northwest. (7-16" x 12-16") Zn8.



Sisyrinchium striatum
Yellow-Eyed Grass (Code: 3560)
 The Iris-like leaves are arranged like a fan. 1" cream-colored flowers with yellow centers are arranged up and around sturdy stems. Very showy when in bloom. (30" x 18") Zn7.



Smilacina racemosa
False Solomon's Seal (Code: 5650)
 Clusters of white flowers at the ends of arching stalks distinguishes this plant from the "true" Solomon's seal. Red berries follow the flowers later in the season. It will spread to form a colony. A "Great Plant Pick" for the Pacific Northwest! (36" x 12") Zn3.



Sorbaria sorbifolia
False Spirea (Code: 7636)
 This deciduous shrub forms large masses of arching branches that are covered with green compound leaves. Billowy white sprays of flowers appear in mid- to late summer. Mature plants spread where you let them. (5-8' x 8-12') Zn2.



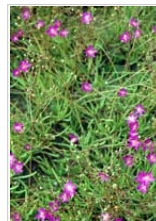
Stachys b. 'Countess Helen von Stein Zeppelin'
Lamb's Ear (Code: 5717)
 Felted silver, evergreen leaves resist rot more than many in this group and have distinct veining. Leaves are longer and broader than the species. It rarely blooms. (12" x 18-24") Zn4.



Stachys byzantina 'Primrose Heron'
Lamb's Ear (Code: 5716)
 Large, soft, chartreuse foliage is delightful in spring. The foliage later fades to silver. It adds a wonderful touch of color to the garden year-round. (12" x 18") Zn4.



Stylophorum diphyllum
Wood Poppy, Celandine Poppy (Code: 5644)
 Bright yellow poppy-like flowers appear in early to mid spring above deeply lobed leaves. 3-5 flowers open at each terminal inflorescence. Easily spreads by seed. Native to eastern US woods. (18-24" x 18-24") Zn4.



Talinum calycinum
Flame Flower (Code: 3937)
 Purple-pink flowers on 10" stalks, open in the afternoon, May to September. Nice 4" succulent rosettes are perfect for the rockery. An American native! (8-16" x 10-12") Zn5.





Thalictrum minus 'Adiantifolium'

Meadow Rue (Code: 5054)

Foliage resembling that of a maidenhair fern is excellent for use in floral arrangements. Dainty chartreuse flowers add visual interest. A unique and beautiful selection that can naturalize nicely. (12-18" x 12") Zn5.



Tricyrtis formosana 'Samurai'

Speckled Toad Lily (Code: 4554)

Clusters of starry purple flowers grace glossy green leaves with crisp white edges. An easy to grow and vigorous plant for dappled shade and moist soil. A "Great Plant Pick" for the Pacific Northwest! (16" x 24") Zn5.



Typha latifolia 'Variegata'

Variegated Cattail (Code: 4218)

Bold green and white-striped leaves highlight cinnamon-brown cattails. Wonderful for water gardens or perpetually-moist areas. It does not spread as aggressively as the species. (5-6' x 2') Zn4.



Vancouveria hexandra

Inside-Out Flower (Code: 6200)

Panicles of white flowers with reflexed petals make it appear inside-out. Dainty, compound deciduous leaves are light green on top and glaucous blue underneath. Native to the Pacific Northwest. (16" x 16") Zn5.



Veronica 'Waterperry Blue'

Speedwell (Code: 7370)

Profuse sky-blue flowers bloom all spring and summer on this low-growing creeper. An excellent evergreen groundcover, the foliage turns purple in winter for added interest. (4" x 18") Zn5.



Veronica austriaca 'Crater Lake Blue'

Speedwell (Code: 3656)

Gorgeous, deep blue flower spikes appear in summer above neat, mound-forming foliage. (12" x 18") Zn5.



Veronica repens

Speedwell (Code: 4425)

Dainty flowers of palest blue last all spring. It forms a deep green, spreading evergreen mat. An excellent lawn substitute; it fills in fast and suppresses weeds. (1" x 18") Zn5.



Vinca minor 'Bowle's Variety'

Periwinkle (Code: 3790)

Large, deep periwinkle-blue flowers top shiny green foliage in spring. This attractive, trouble-free, spreading evergreen groundcover can handle a variety of soils and conditions. (4-6" x 18-24") Zn4.



Viola labradorica

Labrador Violet (Code: 3706)

Dainty violet-blue flowers grace purple foliage May to June. It spreads to form an attractive groundcover. A great foil for many plants. (12" x 12") Zn2.



Viola obliqua 'Royal Robe'

Marsh Violet (Code: 3702)

Remarkably-fragrant, dark purple flowers cover this charming perennial violet in early spring. A good choice for underplanting shrubs or massing in drifts. The blooms are edible. (6-8" x 12") Zn4.



Viola odorata 'Blue Remington'

Sweet Violet (Code: 5157)

Large blue violets appear in profusion from late winter through spring and sometimes in fall. The glossy green foliage is neat and trouble-free. (6" x 15") Zn5.



Viola odorata 'Rosina'

Sweet Violet (Code: 4248)

Dusky pink, sweetly-fragrant flowers bloom in early spring over heart-shaped leaves. It prefers moist conditions. (2-4" x 6") Zn5.



Waldsteinia fragarioides

Barren Strawberry (Code: 3714)

Sunny-yellow flowers are scattered over strawberry-like, evergreen foliage. A tough, mat-forming groundcover that tolerates a wide variety of conditions. (4" x 10") Zn3.

