

Mail Order Catalogue **Autumn 2015**

PLANTS AND BULBS  
TO FLOWER IN THE SPRING

Telephone 01460 242177 [www.avonbulbs.co.uk](http://www.avonbulbs.co.uk)



**Winners of...**  
28 Gold Medals at Chelsea in 29 years  
23 in a row to 2015



**Chelsea 2015**



## WELCOME TO THE AVON BULBS AUTUMN CATALOGUE 2015

Since 1987 we have always prepared the autumn catalogue ahead of Chelsea and used that show as a launch venue each year. But life changes and the growth of the internet in particular has affected how and when people order their bulbs so (as regular readers on our mailing list will appreciate) this catalogue is a month later than it has been in the past. Whilst this has meant that the May workload (at the same

time as some of our biggest shows of the year) has been more intense, it has allowed us to put in a report on Chelsea 2015 with some pictures of the exhibit which you may be interested to see as I am afraid that even the enormous BBC coverage of the show seemed to largely pass us by this year.

For a business that experiences a very low staff turnover last autumn was a bit of a shock with a three leaving (Carole retired, Tim relocated much closer to home and Tom moved on) and it has been a spring that has been busy teaching two more 'new' staff the Avon Bulbs way of things. Mickey comes from a background of National Trust and private gardening in very varied locations with a fount of knowledge and practical skills, Darryl from a slightly more academic background with youth and enthusiasm on his side! It was good that they were able to show themselves first at the RHS February Show in London and at other events since and it will be no time before they will be regarded as Old Hands at Avon Bulbs.

We look forward to hearing from you, and may your gardening go well.

CHRIS IRELAND-JONES

**Malvern 2015**



## AVON BULBS CONTACTS

EMAIL:  
[info@avonbulbs.co.uk](mailto:info@avonbulbs.co.uk)

WEB:  
[www.avonbulbs.co.uk](http://www.avonbulbs.co.uk)

TEL:  
01460 242177  
01460 249060

FAX:  
01460 249025

Burnt House Farm  
Mid Lambrook  
South Petherton, Somerset  
TA13 5HE

## LATE AVAILABILITY AND WEBSITE

The website now contains a great deal more information about all the bulbs we offer, their history and provenance and more about the planting situations that suit them, as well as a repeat of the planting instructions supplied with the bulbs.

If there is not enough information here for your needs, do have a look there instead. We also mark bulbs as 'Sold Out' on the website when they become Sold Out, so if you are ordering later in the season and want to check on availability you might like to check the website.

Also if we have small numbers of 'special' bulbs to sell we do tend to offer them on the website – check the **Special Offers** pages.

# CHELSEA 2015

Gorgeously planted with textured patterns of flower, form and leaf and varied vistas provided by a path that snaked around two giant stainless steel seedheads (loaned to us by Ruth Moilliet). Many claimed that it was one of the best exhibits that we had built at Chelsea (something of a feat after all these years).



SCULPTURE BY RUTH MOILLIET  
t: 07973 908839 e: sculpture@ruthmoilliet.com  
www.ruthmoilliet.com



The lead up to the show had been cool so whilst this meant that everything looked as fresh as it could (this allowed us to include *Tropaeolum tricolor* which was admired by many) but also did mean that some of the plants that we had intended to include did not flower in time to make it to London. The exhibit was shortlisted for the Best Exhibit in the Marquee. Highlights of the stand were provided by generous patches of the pink Lily of the Valley (*Convallaria rosea*), a beautiful group of *Tulipa Sanne* - lily flowered in apricot orange with grey blue within, magenta *Ixia Mabel* floating over white and purple *Alliums*, an isolated group of *Camassia Sacajawea* showing its variegated foliage off to perfection and *Lunaria Chedglow* as a backdrop to a sweep of *Fritillaria acmopetala*. We also exhibited a new form of *Camassia leichtlinii* called *Maybelle* which was lifted from the nursery on the Friday before Chelsea and was still hardly open enough, although the standard *Camassia leichtlinii* flowered for the Harrogate show in late April. It was shortlisted for the Chelsea Plant of the Year but did not win any of the top three places.

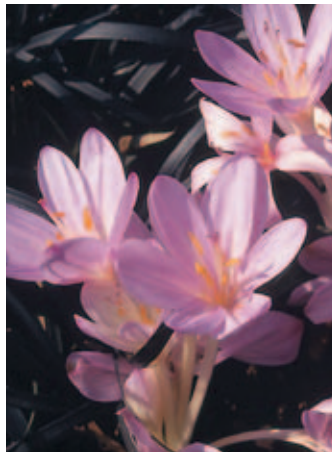


# Late Summer 2015

## PLANTS AND BULBS TO FLOWER IN THE AUTUMN

Plants and Bulbs that mostly flower in the autumn, soon after planting, or else items that just prefer early planting.

Delivery from this section will be made mid-August to early September. Orders close from this section in mid-September.



COLCHICUM AUTUMNALE

COLCHICUM AGRIPPINUM



ACIS AUTUMNALE



AMARYLLIS x AMARYGIA PARKERI ALBA

### ACIS

#### AUTUMNALIS 🏆 106-10

An autumn flowering form of the snowflake family, forming distinct tussocks once happy and undisturbed in a warm dry, sunny soil (a rockery or scree bed are ideal). Slender wiry green or russet coloured stems, supporting several small white papery bells. Plant 3" (7.5cm) deep, nearly touching. Previously called Leucojum autumnale.

Aug/Sept • 9" (22cm)  
£7.00 for 5

### AMARYLLIS

*Amaryllis (and their hybrids) are winter growing, hence with exposed leaves in winter do need to be planted in a sheltered site where they are likely not to be chilled below about -4°C. A cool conservatory should be fine, with the pots moved outside in the early spring. A summer baking in dry conditions 'ripens and primes' the bulbs for flowering. In favoured spots one may be possible to grow them successfully outside.*

#### XAMARYGIA PARKERI ALBA 56-10

A hybrid between Amaryllis and Brunsvigia producing very large bulbs. Flowering with apple-white trumpets surrounding a green stem with a huge perfume.

Sept/Oct • 20" (50cm)  
£8.00

### COLCHICUM

*Easy to grow in good, deep moisture retentive soil, these appear from their summer dormancy denuded of leaves to flower in the autumn – hence 'naked ladies'. A pointer to the end of summer, their bright flowers last incredibly well considering their apparent fragility, their leaves only properly appearing in the spring. They need planting 3" (8cm) deep - perhaps a little more for the bigger bulbs – and 6" (15cm) apart. The smaller-flowered forms will naturalise effectively, but the mower will have to be restrained until the leaves wither away in June. Please order early – after the end of September they seem to flower regardless of the conditions.*

#### AGRIPPINUM 🏆 73-19

Very different from the larger goblet shaped forms, the flowers open almost flat, with broad, pointed petals, in pinkish-lilac, heavily chequered with darker markings. Narrow, wavy-edged leaves appear after flowering, less noticeable in the spring than their bigger cousins. These increase in well composted soil, in an open sunny site. Possibly better in a raised bed or trough as these are smaller. Tough for all of that and increasing in sunny conditions.

Sept • 4" (10cm)  
£15.00 for 3

#### AUTUMNALE 73-05

Small flowers which naturalise most effectively either in sun or partial shade. Soft, satin-sheened mauve. Often producing many flowers from each corm. An easy British native "Meadow Saffron", Wychwood Forest has thousands in flower each autumn.

Sept • 6" (15cm)  
£10.50 for 3



Plants we list which have received the RHS Commendation 'Award of Garden Merit' are now tagged with the trophy symbol. Space does not allow us to add the hardiness rating – please be aware the award applies to the ease of cultivation, excellence and constitution, but not necessarily hardiness.



#### RHS Perfect for Pollinators.

The RHS Perfect for Pollinators mark is only given to plants that support pollinating insects in gardens. Bees, butterflies, moths, hoverflies and many others visit flowers to feed on nectar and pollen; while doing so they transfer pollen and increase seed set and fruit development. Find out more at [rhs.org.uk/plants](http://rhs.org.uk/plants)

(CREDIT: GAP IMAGE LIBRARY)



COLCHICUM SPECIOSUM

(CREDIT: GAP IMAGE LIBRARY)



COLCHICUM SPECIOSUM ALBUM



COLCHICUM WATER LILY

(CREDIT: CLIVE NICHOLS)



CYCLAMEN COUM



COLCHICUM THE GIANT



COLCHICUM AUTUMNALE ALBUM

### AUTUMNALE ALBUM 73-06

The white-flowered form of the species above, sometimes pinkish-white, these would all tolerate full sun or some shade in damper, but not waterlogged conditions.

Sept • 6" (15cm)  
£10.00 for 3

### SPECIOSUM 73-15

Probably the best of the larger forms for most gardens, and it naturalises effectively. Stronger stemmed (and later flowering) than C. autumnale with taller, more richly coloured flowers with rounded, rosy pink-lilac petals.

Sept/Oct • 8" (20cm)  
£10.50 for 3

### SPECIOSUM ALBUM 73-16

Gorgeous shimmering goblets in pure white. A very special plant which can be a highlight of a carefully chosen planting scheme in well composted soil, in a sunny spot. Still expensive, but worth it. At the end of the 19th Century the famous firm of Backhouse in Yorkshire were selling them for 5 Guineas each!

Sept/Oct • 8" (20cm)  
£5.50 or £15.00 for 3

### THE GIANT 73-24

A bit deceptively named, these are not a great deal taller than their cousins, though the flowers when open would be larger, with pale centres and equally robust.

Sept/Oct • 10" (25cm)  
£10.00 for 3

### WATER-LILY 73-23

A multi-petalled variety which opens out widely in the sun. Surprisingly resilient to the weather despite its appearance. Usually big-bulbed and late flowering.

Oct • 6" (15cm)  
£4.00 or £11.50 for 3

### CYCLAMEN

*Hardy, tough and persisting as well as seeding. If you can plant them early (as a consequence of ordering from this section) these Cyclamen will arrive 'properly' dormant and ready to pop in and awake in their new circumstances. You may order them also from the Autumn section, but by then there will probably be some growth visible on them. These are all seed raised in the UK.*

### SPRING FLOWERING FORMS

### COUM 51-116

This will probably be their first year of flowering, shades of pink and white.

£14.00 for 5

### COUM ROSEUM 51-117

Second year flowering, all pale pink flowering corms.

£13.00 for 3

### COUM ALBUM 51-118

Second year flowering, white flowered, always with a small pink 'nose'.

£13.50 for 3

### COUM DARK PINK 51-131

Second year flowering, deep pink shades.

£13.50 for 3

### COUM SILVER LEAF 51-119

Mostly pink flowered, but the leaves are largely silvery patterned.

£15.00 for 3



CYCLAMEN HEDERIFOLIUM



CROCUS GOULIMYI



CROCUS SATIVUS



CROCUS IMPERATI DE JAGER



CYCLAMEN HEDERIFOLIUM ALBUM



CROCUS PULCHELLUS



CROCUS SPECIOSUS

## AUTUMN FLOWERING FORMS

**HEDERIFOLIUM** 51-107  
Pink (or occasionally white) flowered. Ivy leaved.

£12.00 for 5

**HEDERIFOLIUM ALBUM** 51-108  
Second year flowering with white flowers.

£10.50 for 3

## CROCUS – AUTUMN FLOWERING

*Flowering in the late autumn (and one in the very early spring) these bulbs bloom as a reaction to the lowering of the soil temperatures (and the dampening of the soil) in the early autumn. The spring flowering forms (listed in the Autumn section of our catalogue) flower as soil temperatures rise. Some are more difficult to grow than others, but probably the easiest - C. speciosus, should be a feature of any garden providing a dreamy violet splash of colour in late September and October.*

### GOULIMYI 77-36

Too Grecian really for ordinary outdoor conditions here, but in well drained compost in a pot in some protection and with a dry summer rest these are beautiful flowers in both shape and in their soft lilac colouration. Stock limited.

Nov. 5" (12cm)  
£7.00 for 3

### IMPERATI DE JAGER 77-39

Flowering in the very early spring when the delicacy of these flowers is more than welcome, the outer petals are biscuit buff with purple stripes, the inside lilac to purple. From Western Italy and needing some protection or a well drained sunny rockery.

Jan 5" (12cm)  
£7.00 for 3

### PULCHELLUS 77-35

Pale sky-blue with darker veining, and a central yellow throat. This is a meadow plant of northern Greece and Turkey, very pretty and delicate looking but quite possible to grow in light grass in sun or part shade.

Oct • 4" (10cm)  
£4.00 for 10 or £10.50 for 30

### SATIVUS 77-20

The source of Saffron, gathered from collecting the bright red styles from each flower, individually tiny (half a million per kilo!) justifying the huge cost of Saffron. They need deep planting in rich soil, in a sunny position. Their flowering is triggered by suddenly colder nights, our milder climate sometimes does not do that, which makes reliance on one's own Saffron production a bit hazardous.

Oct • 4" (10cm)  
£5.00 for 10 or £11.30 for 25

### SPECIOSUS 77-26

Dramatically effective, deep lilac to purple hues, with bright yellow anthers. Good in light shade or under deciduous shrubs, planted deeply. They will flower late in their first year but do get enough of them! Suggested planting density 15 per sq ft.

Sept/Oct • 5" (12cm)  
£3.25 for 15 or £10.25 for 50



CROCUS TOURNEFORTII



CROCUS SPECIOSUS ALBUS



ERANTHIS GRUNLING



CYPRIPEDIUM GISELA



ERANTHIS SCHWEFELGLANZ

**SPECIOSUS  
ALBUS** 🏆

77-27

All white flowered, great for a contrast amongst the others.

Sept/Oct • 5" (12cm)  
£8.00 for 15

**TOURNEFORTII** 🏆 77-38

Large flowered in pale lavender, strangely the flowers do not close in dull light or at night. White anthered and with prominent orange stigmas. Cretan in origin so requiring some shelter.

Sept/Oct • 5" (12cm)  
£7.50 for 3

**CYPRIPEDIUM**

**GISELA**

64-7

Some of these divisions will produce several flower spikes in their first spring. Hardy and really quite easy to grow in spring light and summer shade, though beware slugs. Some of these may be the yellower flowered form of C. Gisela, but they are just as good. Hardy orchids are now becoming more widely available and our stocks of these are very good so our price has fallen in order to make some space! More growing instructions on the website..

April/May • 18" (45cm)  
£19.50 (were £25.00)

**ERANTHIS**

*These are named forms of the Winter Aconite, usually in flower before the snowdrops in the spring, with their characteristic flowers surrounded by a ruff of green, on account of which my mother in law calls them 'Choirboys'.*

**SCHWEFELGLANZ**

81-01

Pale sulphur yellow, a clean clear but distinct colour. Easy and increasing, and very different from the deep yellow of the E. hyemalis. No more difficult and a great accompaniment to the early snowdrops.

February • 4" (10cm)  
£5.00

**GRUNLING**

81-02

Deep yellow (as E. hyemalis) but each petal marked with a broad green band.

February • 4" (10cm)  
£5.00



HAEMANTHUS ALBIFLOS



IRIS TUBEROSA



HYACINTH WHITE PEARL



GLADIOLUS TRISTIS



HYACINTH DELFT BLUE



HYACINTH PINK PEARL

## GLADIOLUS

### TRISTIS 88-15

Native to South Africa, this is a winter growing specie Gladiolus with a wonderful scent in the evenings. It really needs a sheltered site, or protection from temperatures lower than about -5°C. The 5-20 greeny white flowers open progressively up the long rush-like stems.

April/May • 3' (90cm)  
£5.00 or £12.00 for 3

## HAEMANTHUS

### ALBIFLOS 160-01

Winter growing South African bulbs for a cool conservatory with pairs of lovely broad, thick, succulent leaves covered in soft hairs, looking like rabbit's ears, between which emerge in spring flowers like small shaving brushes in white and yellow. Summer dormant and easy to grow.

Spring 6" (15cm)  
£3.50

## PREPARED HYACINTHS

*For December/January blooming under the correct conditions. These are suitable for forcing for Christmas flowering. They need to be potted by the end of September (hence sold in this late summer section), and initially kept in a cool, dark place to allow rooting. They can then be brought into more light. Too much heat will make them flag and flop. The process of preparation means that these are not available until early September.*

## IRIS TUBEROSA

### (HERMODACTYLUS)

103-110

The 'Widow Iris' does better from early planting, and if you have tried before with limited success, we do suggest that you add some of these to a late summer order and try again. Alternatively see page 33 of the Autumn Catalogue. Translucent black and jade-green flowers, preceded by long rush-like leaves. Requires time to establish and flowering better after a hot summer; plant in full sun. Loves it around heat absorbing sun-drenched paving, or at the base of a warm wall.

April • 6" (15cm)  
£4.50 for 10

### DELFT BLUE 86-05

A compact, pale blue spike set off by the emerging dark green leaves.  
£3.30 for 3 or £7.00 for 7

### PINK PEARL 86-35

Delicately pink, and like the others deliciously fragrant.  
£3.30 for 3 or £7.00 for 7

### WHITE PEARL 86-34

Strong-growing, broad, gleaming white flowers.  
£3.30 for 3 or £7.00 for 7





LATHRAEA CLANDESTINA



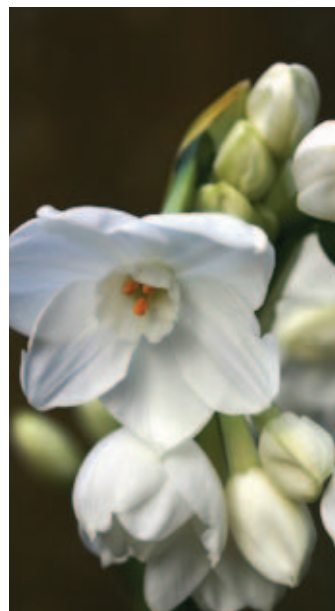
NARCISSUS DOUBLE ROMAN



LILIUM CANDIDUM



NARCISSUS CYCLAMINEUS



NARCISSUS PAPERWHITE ZIVA



SCILLA AUTUMNALIS



SCILLA BITHYNICA ALBA

## LATHRAEA

### CLANDESTINA 71-05

Purple toothwort, a parasite mainly of willow, poplar hazel and alder (though rarely seeming to cause any harm to its host). The slightly orchid like flowers are all one sees above ground, a true parasite having no chlorophyll. Plant these divisions close up against the bole of a mature host.

April • 3" (8cm)  
£5.00 or £13.00 for 3

## LILIUM

### CANDIDUM 107-114

Like the Hermodactylus above, a plant that is better started off early, and inevitably the first orders get the pick of the crop, so ordering from here has its benefits. See page 33 of the Autumn Catalogue for more details.

June • 36" (90cm)  
£6.00 or £16.50 for 3

## NARCISSUS

*These Narcissus will be ready to be sent out in mid-September and, if you are after a very early display of Scented Daffodils, may be ordered from this section to be sent early with any other plants. Also see the main Autumn Catalogue pages 36 - 42.*

### CYCLAMINEUS 113-179

An iconic small species, one that is loved and hankered after by many, but they rarely do well in limey soils. Grow them where they will be happy and seed about – but you will need more moist conditions in soils that are have either a neutral or acid pH.

March • 5" (12cm)  
£5.50

### DOUBLE ROMAN 113-57

A wild tazetta form that has increased well under unheated cover where it receives a warm dry summer rest. It cannot be grown outside except under very favoured conditions but the spicy scent in midwinter is glorious.

Dec/Jan • 15" (38cm)  
£5.00 for 3

### PAPERWHITE ZIVA

113-152

Early to flower from being forced; we reckon on about eight to ten weeks to bloom. White flowered and multi-headed, with a huge perfume. Plant them shallowly in the compost and in good light so they don't get too tall. Not reliably hardy.

Dec/Jan • 15" (38cm)  
£6.00 for 5 or £11.00 for 10

## SCILLA

### AUTUMNALIS 125-18

Hardy, but uncommon natives of the south-west, these are incredibly long-lasting in flower. Bright blue flowers up a fine wiry stem, lasting ages. They need a sunny, well-drained soil.

Aug/Oct • 5" (12cm)  
£8.50 for 3

### BITHYNICA ALBA 125-07

A hardy early spring gem to use as contrast to all the little blue bulbs flowering at the same time, they will set seed and multiply (and you'll get blue flowered plants from that seed I am sure) but a low white feature to follow the snowdrops. Small bulbs, but they will all flower.

March/ Apr. 5" (12cm)  
£5.00 for 3



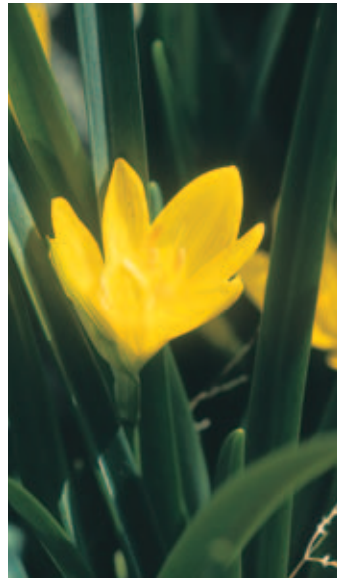
SCILLA CILICICA



TECOPHILAEA CYANOCROCUS LEICHTLINII



SCILLA LILIO-HYACINTHUS



STERNBERGIA LUTEA



SCILLA LILIO-HYACINTHUS ALBA



TECOPHILAEA CYANOCROCUS VIOLACEA

**CILICICA** 125-31

Lilac blue flowered. Natives of the Eastern Mediterranean they seem to increase merrily in gritty compost and would be happy in a sunny rockery. Early into leaf and flower.

Mar/Apr • 8" (20cm)  
£5.00 for 3

**LILIO-HYACINTHUS** 125-28

Broad leaved, this a pale blue coloured form, tidy in foliage and with pretty, delicate racemes. The bulbs are formed of loose lily-like scales. Clump forming and best in some shade.

Mar/Apr • 8" (20 cm)  
£12.00 for 3

**LILIO-HYACINTHUS ALBA** 125-29

This pretty white flowered form also has paler leaves than the blue flowered one. Best in some shade.

Mar/Apr • 8" (20 cm)  
£12.00 for 3

**STERNBERGIA**

*For sunny conditions and often at the base of a wall that catches the sun. Chalky soil and good drainage suit them perfectly where they will perform in more open conditions. Brilliant bright green foliage in late summer and winter - bright yellow flowers in the autumn.*

**LUTEA** 126-05

Broad petalled bright-yellow flowers in October, immediately recognisable. Easy in sunnier and lighter soils in the protection of a wall or shrub.

October • 7" (17cm)  
£3.20

**TECOPHILAEA**

*Chilean bulbs from a high altitude, but where they come from is relatively dry, and our winters are really too wet for them. But grow them under some protection (particularly from rain) and you'll be amazed by the colours in the blue flowers. Their blue is like the dazzling displays produced by some exotic butterflies.*

**CYANOCROCUS LEICHTLINII** 128-04

White centred with gentian blue petals.

March • 5" (12.5cm)  
£6.00 or £17.00 for 3

**CYANOCROCUS VIOLACEA** 128-06

Intensely dark blue petalled, like a dramatic thundery sky.

March • 5" (12.5cm)  
£6.00 or £17.00 for 3





## Order for Late Summer Despatch 2015 Bulbs that need Early Planting this Autumn

Office use only:

Date received:

Order No:

Avon Bulbs Ltd • Burnt House Farm • Mid Lambrook  
South Petherton • Somerset • TA13 5HE

### Account number:

0 0 0 □ □ □ □ □ □ □ □

If you have ordered from us in the past few years and your catalogue bears an account number on the address label as a result, please do record it in the space provided.

Title: Mr  Mrs  Miss  Other \_\_\_\_\_

Name: \_\_\_\_\_

House Name/No: \_\_\_\_\_

Street: \_\_\_\_\_

Town: \_\_\_\_\_

County: \_\_\_\_\_

Country: \_\_\_\_\_ Postcode \_\_\_\_\_

Contact Number: \_\_\_\_\_

Tel: \_\_\_\_\_ Mob: \_\_\_\_\_

**Email address:** \_\_\_\_\_

Please see opposite to see how these are useful to us (and yourself!).

**Other Delivery Instructions:** \_\_\_\_\_

\_\_\_\_\_  
\_\_\_\_\_  
\_\_\_\_\_  
\_\_\_\_\_  
\_\_\_\_\_  
\_\_\_\_\_

### Payment:

Orders are not accepted without payment except by prior agreement.

Please include payment or please charge my Visa/Mastercard account.

Cheque enclosed  Yes, value £ \_\_\_\_\_, or

Card No. □□□□ • □□□□ • □□□□ • □□□□

Valid from date □□/□□ Card expiry date □□/□□

Security code (last three digits on reverse of card) □□□

Signature \_\_\_\_\_

# Add Blue!

See our collection of Little Blue Bulbs on the inside back cover



£14.00

Anemone banda Blue  
Camassia esculenta  
Muscari azureum  
Scilla bifolia  
Scilla siberica

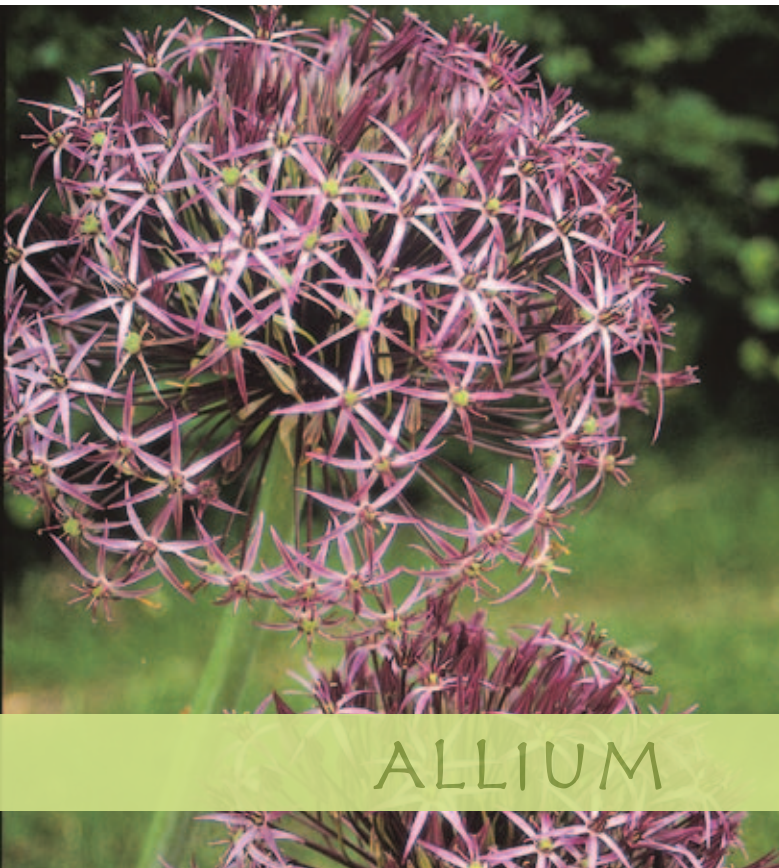
## Gift Tokens

These can be supplied at any time of year for any value over £15.00. We will send it with an attractive card with your message, adding the recipient to our mailing list for future catalogues.



# Autumn 2015

PLANTS AND BULBS TO PLANT IN THE AUTUMN, MOSTLY TO FLOWER IN THE FOLLOWING SPRING. DESPATCH OF THESE ITEMS BEGINS IN EARLY TO MID SEPTEMBER WITH THE INTENTION OF SENDING EVERYTHING ON YOUR ORDER IN ONE PARCEL. FOR FURTHER INFORMATION SEE THE 'ORDERING FROM AVON BULBS' SECTION AT THE BACK.



## ALLIUM

ALLIUM CRISTOPHII

### ALLIUM

*Always welcome in the garden as the flowers offer height and distinction in the early summer when most gardens are not quite so colourful. Their exclamation mark shape differentiates them from the surrounding planting, and companion foliage 'hides' what is sometimes distracting foliage, which begins to yellow at flowering time. They are generally plants of sunny and well-drained soils, and can be used in regimented eye-catching sweeps, or else, in a more cottagey style, as isolated small groups to equally good effect.*

*Everyone seems to love Alliums, they tell us so at the flower shows and, just as importantly, knowing that the insects and bees are struggling nowadays, it is worth a reminder that the Alliums provide fantastic food for those beneficial insects, especially the late flowering forms. Our beds of A. angulosum, A. glaucum and A. tuberosum shimmer with activity on sunny summer days. Try out a number of different forms to see which do best in your circumstances?*

### AMBASSADOR 53-60

Beginning to flower in late May these heads should see one through all of June with tall stems topped by mid purple heads about 5" (10cm) across. Very big bulbed plants benefitting from deep planting to ensure that the stems do not wobble. Good seed heads follow the show.

June • 40" (100 cm)  
£10.00 for 3

### ANGULOSUM (PYRENAICUM) 53-28

Wonderfully easy to grow plants. Bright glossy green leaved with lots of pale lilac flowers in the height of summer when butterflies and hoverflies jostle to feed on them. We supply small clumps to be planted 9" (22cm) apart, in the sun and not too dry. Divide them again when they are thick.

July/August • 12" (30cm)  
£6.50 for 3 - (divisions not true bulbs)



ALLIUM AMBASSADOR



ALLIUM ANGULOSUM

### CÆRULEUM 53-14

Unusual blue flowered drumstick flowers originating from the steppes of Russia and China, best in a drier sunny spot or rockery where the small bulbs can be planted quite closely - 1-2" (2.5-5cm) apart.

June • 18" (45cm)  
£3.70 for 15



ALLIUM CÆRULEUM



ALLIUM CERNUUM

### CERNUUM 53-04

Dainty chandeliers formed of dozens of small claret pink flowers hanging off the nodding stem, sometimes several heads in a succession. Easy to grow and seeding in lighter soils in the sun. Delivered as fresh dug plants rather than bulbs.

Summer • 18" (45cm)  
£5.00 for 5

### CRISTOPHII (ALBO PILOSUM) 53-11

If you only ever buy two or three Alliums, this must be one of them. Sculptural flower heads are borne on quite stocky stems, initially greenish purple, gradually transformed to a metallic silvery violet. Spherical melon sized heads complement the purples of rampant geranium or the spikier silvery blues of Lavender. Buff coloured seed heads follow. Plant them 8+ " apart in sunny well drained soils in borders or even rough grass, but they will also tolerate some shade.

June • 10-16" (25-40cm)  
£3.15 for 3, £9.90 for 10  
or £19.40 for 20



ALLIUM GLOBEMASTER



ALLIUM HOLLANDICUM

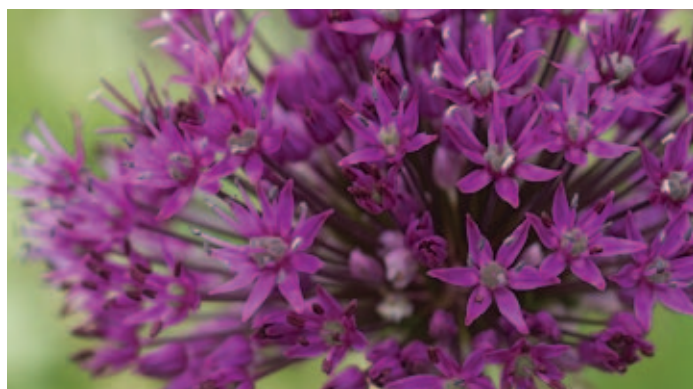


ALLIUM GIGANTEUM



CREDIT: GAF IMAGE LIBRARY

ALLIUM GLADIATOR



ALLIUM HOLLANDICUM PURPLE SENSATION



**GIGANTEUM** 53-20

Densely filled heads in pale purple the size of a grapefruit top a tall bare stem. A central Asian species requiring well-drained soils and a sunny site. Its name refers to its impressive height rather than to the size of head.

Late June/July • 48" (120cm)  
£6.00 or £16.00 for 3

**GLADIATOR** 53-55

A good solid hybrid between A. aflatunense and A. elatum with pinkish purple flowers on strong stems. Easy, increasing and supplied as big bulbs these always flower and last well.

June • 36" (90cm)  
£8.00 for 3

**GLOBEMASTER** 53-46

Probably the best large headed Allium hybrid with exceptionally long lasting flowers, the first array replaced by another second flush of deep violet-purple flowers. The insects still love to feed on them though you'll not get a remnant dry seed head as they are sterile. Tidier leaved than most as well. Plant them about 12" (45cm) apart in well drained soils in good light.

May/June • 36" (90cm)  
£5.70 or £16.80 for 3

**HOLLANDICUM (AFLATUNENSE)**



53-08

If you have a bigger area to fill, or want a more subtle and textured display this form comes top of the list, they provide that slight irregularity in colour, height, size and maturity which adds subtlety and charm to any planting. Deep lilac to pale purple in hue, about the size of an orange. Easy in any free draining soil in the sun, planted about 6" (15cm) apart.

May/ June • 24-36" (60-90cm).  
£3.30 for 5, £6.00 for 10  
or £11.00 for 20

**HOLLANDICUM PURPLE SENSATION**

53-09

An intense deep purple coloured strain, with heads the size of small oranges. Another of that select group of 'must have' Alliums. They provide purple polka dots in your planting scheme, adding colour, texture and geometric shapes to your borders. Derived from a clone these should all be the same hue.

May/ June • 30" (75cm)  
£3.90 for 5, £7.00 for 10 or  
£12.80 for 20



ALLIUM PINBALL WIZARD



ALLIUM IVORY QUEEN



ALLIUM NIGRUM



ALLIUM NIGRUM PINK JEWEL



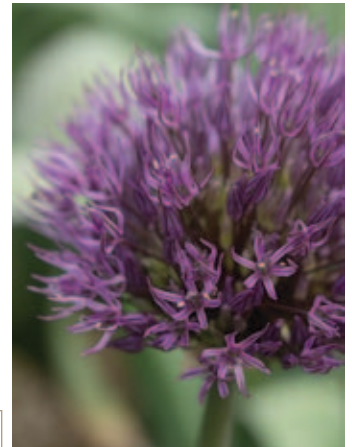
ALLIUM KARATAVIENSE



ALLIUM MOUNT EVEREST



ALLIUM OBLIQUUM



ALLIUM POWDER PUFF

### KARATAVIENSE 🏆 53-22

Characterised by thick broad grey-green red rimmed foliage covered in a dusty bloom, these look as though they come from a modern design school with such metallic looking leaves. A pale pink-white flower is held on a short stem. Best grown in tight clumps, 4" (10cm) apart in sunny sites, and ideal for gravel gardens or silvery planters.

May/June • 10" (25cm)  
£4.00 for 5 or £11.40 for 15

### KARATAVIENSE IVORY QUEEN 53-23

This selected form is similarly grey-green leaved but with a pale margin and an apple-white flower. The two go together perfectly and the two forms could be intermingled.

May/June • 10" (25cm)  
£4.00 for 5 or £11.40 for 15

### MOUNT EVEREST 53-43

Probably the best tall white flowered Allium. Grapefruit sized heads top a tall glossy green stem. The leaves persist, so are not too obtrusive at flowering time. Lovely when combined with other strong colours such as Gladiolus byzantinus, and planted with a dark backdrop, we suggest about 12" (30cm) apart.

May/June • 36" (90cm)  
£7.00 for 3 or £11.00 for 5

### NIGRUM 53-24

Greeny-black ovaries provide the source of the name, though the suggestion of blackness does not sit so well with an otherwise creamy white flower! The shape is less rounded, more that of a flattened umbel, easily grown in sunny well-drained soils with a dry summer rest.

June • 24" (60cm)  
£4.00 for 5 or £7.00 for 10

### NIGRUM PINK JEWEL 53-65

A pale pink form of the plant above, one which was much admired in the Allium trials at RHS Wisley in 2014. Large domed pale pink heads with dark centres.

May/June • 36" (90cm)  
£6.50 for 3

### OBLIQUUM 53-26

Siberian, so incredibly tough and despite being in leaf all winter, perfectly hardy. Flowers the size of large eggs in June when they eventually stand erect, greenish-yellow and quite 'fluffy'. Increasing from seed as well as clump forming.

June • 24" (60cm)  
£8.00 for 3

### PINBALL WIZARD 53-61

Fully 6" (15 cm) across these are not as densely packed with flowers as the heads of Globemaster, so the effect is rather more fluffy but they are tall on thick stems so resistant to weather, the flowers a mid purple. Rather earlier flowering too, at their best in mid May

May • 40" (100 cm)  
£10.00 for 3

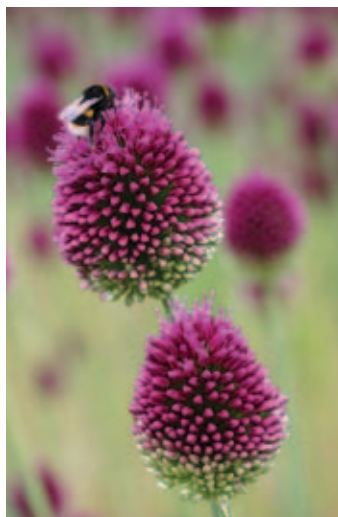
### POWDER PUFF 53-66

Relatively low growing but large flowered, a broad leaved allium with violet purple flowers about the size of a tennis ball on much shorter stems than would normally be expected for the size of head, a hybrid (allium nevkianus X allium servaschanicum, both from Central Asia since you asked!)

May/June • 15" (35cm)  
£8.00 for 3



ALLIUM ROUND AND PURPLE



ALLIUM SPHÆROCEPHALON



ALLIUM UNIFOLIUM



ALLIUM SENESCENS SSP. GLAUCUM



ALLIUM SCHUBERTII



ALLIUM TUBEROSUM



ALLIUM SCHOENOPRASUM  
SILVER CHIMES

## ROUND AND PURPLE 53-62

Introduced into our list as a consequence of very positive reviews in the Gardening Which? report of 2013 (not that they are perfect, they recommended *A. triquetrum* as a good *Allium* which I would argue with, it seeds about far too freely and will become a pest). Strong stemmed, tall and lilac rather than purple coloured with a metallic sheen. In flower for ages.

May/June • 36" (90cm)  
£6.00 or £16.50 for 3

## SCHOENOPRASUM SILVER CHIMES 53-49

Pretty white flowered pom poms atop all green foliage in the late spring and early summer. They need sunny well drained conditions and if allowed to seed may throw pink flowered seedlings. Delightfully easy.

May/June • 9" (22cm)  
£7.50 for 3 (small clumps)

## SCHUBERTII 53-31

Spectacular and eccentric. Emerging early in the late winter they are at some risk to really cold weather but planted in a warm sunny garden and given a dry warm rest following flowering these can be fabulous. Like a tumbleweed the long spokes are what they might roll away on when dry, the seeds held on the shorter extensions. A vegetable explosion!

June • 18" (45cm)  
£10.00 for 3

## SENESCENS SSP. GLAUCUM 53-30

These are one of the summer flowering *Alliums* (as is *A. angulosum* another) which really come into their own in the summer, they flower for ages and stay low, tidy and neat in the sun. These are from northern Asia, with pale lilac flowers over lovely blue grey-green foliage. Plants from division, not true bulbs.

Summer • 12" (30cm)  
£7.50 for 3 (small clumps)

## SPHÆROCEPHALON 53-33

Egg shaped heads (and about the same size) initially deep green, turning purple from their tips in July. Swaying and waving in the summer breezes on long wiry stems. Butterflies love them. Woven through a summer border they visually 'tie things together'. Easy and inexpensive, and no less good for that. We supply much bigger than generally available, the resulting flower size will be bigger as a result. Plant them 3" apart or 10-15 per square foot.

Summer • 24" (60cm)  
£3.50 for 15, £5.50 for 25 or  
£10.00 for 50

## TUBEROSUM 53-38

As much a herb as a bulb, (much as any chives) but with a long flowering period through the summer, with white flowers over lush foliage, they are multifaceted plants, and good insect feeding stations too.

Aug/Oct • 24" (60cm)  
£6.00 for 3 (small clumps)

## UNIFOLIUM 53-40

Shell pink heads of quite papery but lasting flowers, about 15 within each head. Easy to grow in any sunny and well drained spot, or rockery. Planted quite closely their massed effect is very attractive.

May • 10" (25cm)  
£5.50 for 20

## Collection Times

We are primarily a business that operates by Mail Order. But if you live nearby, or are passing by when we are likely to be getting your order ready, you might like to collect your order and save on the postage?

We are open for such circumstances by arrangement from 21 September to the end of October 2015.





NECTAROSCORDUM SICULUM



NECTAROSCORDUM TRIPEDALE

## NECTAROSCORDUM

Much like the Alliums, with the same 'oniony' scent when the leaves are crushed, and with very similar looking bulbs armed with a small spike. However for accuracy's sake we list them separately, but together (though out of strict alphabetic order).

### SICULUM 53-32

Tall stemmed (with a pronounced keel – think of the seam in a pair of tights) leading to dozens of hanging green and burgundy marked bells pendulously arranged in a loose head. They enjoy more shade than true Alliums might and seed about in sandy soils. The dry seed heads look like models of multi-turreted fairy castles.

Early summer • 30" (75cm)  
£3.20 for 5 or £6.00 for 10

### TRIPEDALE 53-25

In many respects similar to the N. siculum above, but with more numerous flowers in a gorgeous soft pink which emerge spectacularly from their translucent sheath. Not as difficult to grow as the price might suggest, but obviously uncommon and very select. How should one say the name? I am not sure, but hope that it should be 'tripi- dali' rather than 'tripe-dale'.

June • 36" (100cm)  
£11.00



ANEMONE APENNINA



ANEMONE BLANDA WHITE SPLENDOUR

## ANEMONE

*The spring flowering anemones take over from the crocus in late March for their turn in the limelight. The weather is on the turn for the better and the brighter light is accentuated by the wet foliage resulting from scudding showers and windy conditions. This is just what Anemones love. And they open wide in the sunshine, though if the light is only dappled by dint of bare branches and evergreens, they won't mind.*

*They are not all alike even when 'resting': the bulbous (A. blanda) forms come as hard wizened corms, which need an overnight soak before planting and will take a long hot summer in their stride. The rhizomatous (A. apennina and A. nemorosa) forms need a cooler, shady rest after they have flowered, so they prefer more shaded, woodland-like conditions and hating exposure to air will be damp packed in coir when despatched by us.*

### APENNINA 🏆 57-11

Pale blue or white flowered with many deeply cut petals on flowers held above soft mounds of leaves. An excellent and very pretty plant, probably better than A. blanda for UK conditions. Ideal under big deciduous trees or in light grass following snowdrops and flowering with the early daffodils. Both colours are equally lovely and they combine very naturally. Plant in small groups 6" (15cm) apart where they will seed about. Home grown and dug to order the damp packed rhizomes are inevitably rather variable in size.

March/April • 8" (20cm)  
£7.50 for 5

### BLANDA BLUE 57-07

Low growing deep blue shaded flowers which shimmer close to the ground in the March winds and shake off the rain. Easy in any summer shaded spot wherever the more angled spring light (and moisture) penetrate through.

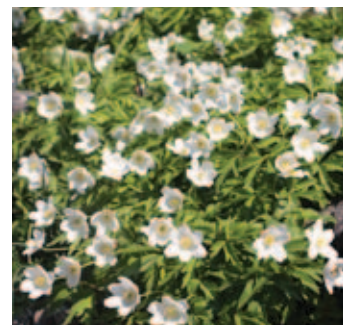
March • 4" (10cm)  
£2.00 for 10, £4.50 for 25  
or £8.00 for 50



ANEMONE BLANDA BLUE



ANEMONE BLANDA PINK STAR



ANEMONE NEMOROSA

### BLANDA

#### PINK STAR 57-08

Pale pink flowered plants of the same stature and usefulness.

March • 4" (10cm)  
£3.80 for 10

#### BLANDA WHITE SPLENDOUR 🏆 57-12

Gleaming white petals surrounding a hub of golden stamens, and when ruffled by the wind showing their pink tinged backs. Opening widely in direct sunshine, their flowering is a sure sign that spring has arrived. Warmer soils and direct light suit them best, in too much shade they get rather leggy. Larger corms, which you will receive whole - many sell these cut into smaller pieces.

March • 5" (13cm)  
£3.50 for 10, £8.00 for 25  
or £14.00 for 50

#### NEMOROSA 🏆 57-20

The wild wood anemone. The simplest of low white flowers from stick-like rhizomes, for woodland like situations, in shade with leafmold rich soils.

April • 4" (10cm)  
£4.00 for 5



ANEMONE NEMOROSA BLUE EYES



ANEMONE NEMOROSA VIRESCENS



ASPHODELUS ALBUS



ANTHERICUM LILIAGO MAJOR



ANEMONE RIVULARIS



ANEMONE NEMOROSA ROBINSONIANA



BOMAREA SALSILLA



ANEMONE RANUNCULOIDES FLORE PLENA

**NEMOROSA BLUE EYES** 57-36

Like all the double forms of Anemone the flowers are not always regular, and indeed may initially be temporarily single petalled, but with age and establishment fill out to glorious full flowers with that exquisite blue central marking.

April • 4" (10cm)  
£6.50 for 3

**NEMOROSA ROBINSONIANA** 57-24

Large flowered in pale blue with prominent yellow anthers.

April • 5" (13cm)  
£5.50 for 3

**NEMOROSA VIRESCENS** 57-17

A rather strange and fascinating form where all the petals have become bracts so that the 'flower' becomes a paler green ruff. Quite different from the others and enjoying the same conditions.

April • 5" (13cm)  
£5.50 for 3

**RANUNCULOIDES FLORE PLENA** 57-27

A native of Europe with all the characteristics of the wood anemone but these are bright yellow flowered and this form has double petalled flowers. Easy and increasing in humus rich soil in woodland conditions.

April • 5" (13cm)  
£5.50 for 3

**RIVULARIS** 57-29

A beautiful summer flowering anemone for the summer border with branching stems. Shiny white flowers with blue stamens and silvery blue on the backs. For full sun or part shade in reasonable soil, seemingly rabbit proof! Allow 2'. 60cm spread.

June • 24" (60cm)  
£4.50

**ANTHERICUM**

**LILIAGO MAJOR** 58-05

Pretty white flowered perennials from southern Europe. A crown of thick fleshy roots when dormant in the autumn, providing for splendid, informal looking plants that enjoy moisture retentive soil in good light. When settled, will carry ten or more flower stems piercing upward through the foliage each carrying a dozen or more flowers. The flowers, looking like little flared trumpets with yellow stamens, open sequentially up the stems. Border plants for good fertile soils in the sun. Plant 2', 60cm apart.

May • 24" (60cm)  
£7.50

**ASPHODELUS**

**ALBUS** 34-05

This Asphodel makes a strong structural statement with its broadly branching habit, the stems carrying starchy white flowers, finely henna lined. Best in a sunny border or gravel garden and in early growth through the winter, more suitable for early autumn planting. Architectural and structural plants for full sun, probably planted no closer than 2' (60cm) apart. Expect big roots!

Summer • 3-5' (90-150cm)  
£12.00

**BOMAREA**

**SALSILLA** 10-04

The family are Mexican and South American climbers that one would imagine ought to need protection, but recent winters here have left them untouched by cold, buried deep in the ground. Pink flowered on the ends of thick tangled stems with quite succulent-like foliage, sometimes the heads look down, or up, but never the same way! They will need full sun or part shade and you will need to provide support when in growth.

Summer flowering • 30" (70cm)  
£5.00



# CAMASSIA



CAMASSIA ELECTRA



CAMASSIA LEICHTLINII ALBA



CAMASSIA CAERULEA



BONGARDIA CHRYSOQONUM

CAMASSIA MAYBELLE

CREDIT: GAP IMAGE LIBRARY

## BONGARDIA

### CHRYSOQONUM 67-04

Suited to somewhere sun-baked and dry in the summer, a rare bulb with coppery yellow flowers and attractive grey-green leaves marked with red. As well as being totally hardy they are hugely drought resistant and love a hot dry soil. Very special members of the Berberis family with pretty, hard, nut-like tubers.

April/May • 9" (22cm)  
£4.70 or £12.50 for 3

## CAMASSIA

*Very hardy bulbs of North American origin that love that heavy, often rather poorly drained soil that many bulbs find tough to cope with. If your soil is too heavy and the summers too wet to get repeat flowering from your Tulips some of these might be a suitable alternative? Suitable for borders or in grassland where one can achieve a full six weeks of interest using just a few different varieties.*

### LEICHTLINII SSP. LEICHTLINII

#### ALBA 70-07

Ivory-cream in flower, standing out brilliantly against any dark backdrop and a good contrast for the Alliums in May. They spread their seed around, and in time sow themselves through the herbaceous border in good cottage garden style. They do not always form as big a bulb as the blue C. caerulea and sometimes seem to flower from quite small bulbs planted about 9" (22cm) apart. They flower about 10-14 days later than the 'caerulea' form.

May/June • 36" (90cm)  
£6.00 for 3 or £17.00 for 9

### LEICHTLINII SSP. SUKSDORFII

#### ELECTRA 70-10

Much bigger flowered than any other Camassia we know, the colour a pale lilac purple. These are sought after large bulbs only derived from slow vegetative division. Their higher price just reflects their speed of increase, but you should never lose them and they'll only get better and better, particularly in heavy soil and cooler conditions. I suspect that the stock here is nearly unique.

Apr/May • 3' (100cm)  
£7.50

### LEICHTLINII SSP. SUKSDORFII

#### CAERULEA 70-06

A feature plant for the border in late spring where they make magnificent shows with many erect stems of deep lavender blue flowers, curving skyward from thick clumps when established. They set no seed, only increasing as the bulbs split up. Longer lasting flowers result from planting in some shade and they love heavier soils that hold the moisture. A brilliant plant for heavy clay soils! Big bulbs that ought to have 5" of soil over them when planted 9" (22cm) apart.

April/May • 32" (80cm)  
£5.30 for 5 or £10.00 for 10

### LEICHTLINII CAERULEA MAYBELLE 70-16

Shorter, later flowering and with a flower colour that is less purple and more blue than those of the plant above. We think this good enough have entered it into the Plant of the Year competition at Chelsea 2015. Given the popularity of the Camassias, a blue form that flowers two weeks later than the 'standard' one should be good news?

May 24" (60cm)  
£6.50 for 5



CAMASSIA SACAJAWEA

### LEICHTLINII SACAJAWEA 70-15

A cream flowered form, with a noticeably variegated margin to the leaf, this nicely accentuates what is (in Camassia generally) otherwise not very interesting foliage. The name honours a native American Indian woman who found the explorers on the Lewis and Clark expedition of 1805 starving as they crossed America east to west (and back again, for the first time) feeding them 'quamash' bulbs.

May/June • 36" (90cm)  
£12.50 for 3



CAMASSIA SEMI-PLENA



CAMASSIA ESCULENTA



CHIONODOXA PINK GIANT



CONVALLARIA MAJALIS BLUSH



CAMASSIA AVON'S  
STELLAR HYBRIDS



CHIONODOXA LUCILIAE



CONVALLARIA MAJALIS FORTINS  
GIANT

## LEICHTLINII SEMI-PLENA 70-08

A tall tower of full petalled, almost fluffy looking cream coloured flowers, a sterile form of the species plant *C. leichtlinii alba*, but with sterility comes a long flowering season. Better where they get more sun than shade and best where the soils are damp through spring and early summer.

June • 36" (90cm)  
£4.50 or £12.50 for 3

## LEICHTLINII AVON'S STELLAR HYBRIDS 70-11

We have been growing and hybridising *C. leichtlinii* with the intention of raising more interesting colour strains for many years. The resulting plants exhibit widely varying colours, combinations of purple blue, mauve, greyish, purplish, green and pale pink. We cannot guarantee what you might receive, but many are eye-catching and from the seed that they in turn produce, who knows what you might raise yourself! The bulbs also vary somewhat in size.

May • 36" (90cm) - colours will vary  
£8.50 for 5

## QUAMASH (ESCULENTA) 70-05

The shortest form of Camassia, suitable for naturalizing in rough very late mown grass or to dot in groups informally in the borders. Smaller bulbs, with dramatic, rich, dark purple-blue flowers with startling yellow stamens. A meadow plant. The bulbs are often pitted and marked when dormant, it seems to make no difference to their growth, plant them 3-4" (10cm) apart.

May/June • 12" (30cm)  
£3.80 for 10 or £7.00 for 25

## CHIONODOXA

*The spring bulbs provide a big range of shapes, strong colours and varied textures. It can all look a bit 'scrambled' and a way to combine them all better is to use a range of the 'little blue bulbs' so creating a unifying backdrop. This ties the louder colours together and provides a steady consistency. Any of the Chionodoxa, Muscari, Scilla and Anemone provide this function.*

## LUCILIAE 72-04

These small bulbs are multifunctional, they can go into perennial beds or be naturalized in rock gardens in sun or part shade, and combine well with the daffodils, grape hyacinths, crocuses and other small spring bulbs. They can also be naturalized in grass though mowing too early or too low needs to be avoided. Brilliant blue with white centres. Buy lots, planting densities need to be generous, though they will seed about. You'll initially need 30-40 per square ft.

February/March • 4" (10cm)  
£3.75 for 20, £8.50 for 50  
or £16.00 for 100

## FORBESII PINK GIANT 72-10

With a spike of very pretty pale pink flowers, this is a taller and slightly earlier alternative to the more common blue shades. Being taller it needs more light to avoid flopping over. Plant about 1" - 2" (2.5-5cm) apart, or 15 per square foot.

February/March • 5" (13cm)  
£2.80 for 10 or £6.50 for 25

## CONVALLARIA

*Lilies of the Valley. Spring flowering plants of woodland origins with stringy rhizomes under the soil. They like humus rich soil and part shade but everyone's experience of growing these is different and (as is reported to us) they will grow in the most unlikely places. But they do need patience to begin with and tales of them taking 2 or 3 years to settle abound. They are all about 6" (15cm) tall when in flower in May.*

## MAJALIS BLUSH 75-10

In paint terms probably rose white, so palest pink but they have increased well. Do plant these in some light shade, which avoids the warm May sun bleaching the colour from the flower.

£7.00 for 3

## MAJALIS FORTINS GIANT 75-05

Larger flowered and taller than the 'common' white Lily of the Valley but equally scented. For sun or shade but in the former they need a more moisture retentive soil. Good, strong, fresh-dug rhizomes to plant horizontally about 2" deep (5 cm) and double that apart.

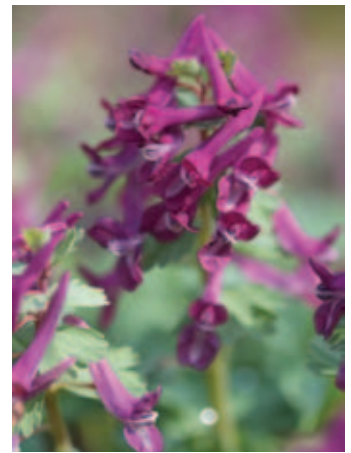
£6.80 for 10



CONVALLARIA MAJALIS ROSEA



CONVALLARIA MAJALIS HOFHEIM



CORYDALIS SOLIDA PURPLE BIRD



CORYDALIS FLEXUOSA CHINA BLUE



CORYDALIS SOLIDA



CONVALLARIA MAJALIS  
FERNWOOD'S GOLDEN SLIPPERS



CORYDALIS SOLIDA GEORGE BAKER



CORYDALIS BLUE DRAGON

## CORYDALIS

A family with snapdragon like flowers – but those we sell fall into two distinct groups, the blue flowered flexuosa forms which we supply already growing in pots, and the solida types with corky tubers. The latter will cope anywhere in sun or part shade and will seed about, the former need encouragement to grow away from the compost in which they are established before they settle in.

### FLEXUOSA CHINA BLUE 76-22

Exhibiting beautiful pink-fringed juvenile foliage when planted in some sunshine and startling pale blue flowers, this still remains a 'buy on sight' plant. Sold by the potful.

Spring/Summer • 6" (15cm)  
£2.90

### FLEXUOSA BLUE DRAGON 76-12

Bronze purple foliage, its colour heightened when planted in some direct sunshine, particularly in the early spring, with deep purple-blue flowers. Sold by the potful.

Spring/Summer • 6" (15cm)  
£2.90

### SOLIDA 76-15

Small wizened pebble-like tubers, the size of small marbles which produce froths of grey-green foliage and attractive spikes of spurred flowers in lilac, pink and purple hues. Easy in any well drained soil, even in our heavy loam planted in summer shade they happily seed about.

March/April • 4" (10cm)  
£3.80 for 10

### MAJALIS FERNWOOD'S GOLDEN SLIPPERS 75-11

From the late Stephen Taffler (inveterate variegated plant addict) who used to live nearby. These are startlingly golden leaved, particularly in the early spring before they flower and there has been no reversion to green so it appears perfectly stable.

£4.00 each

### MAJALIS ROSEA 75-07

A vigorous form which we know to be tough and productive with lovely pale pink fragrant flowers, like small and very expensive pink pearls. Best in dappled light or part shade, direct bright sunshine tends to burn out the pink. As with all the Convallaria you'll need a dose of patience before they thicken up.

£6.00 for 5

### MAJALIS HOFHEIM 75-12

This form exhibits a creamy yellow edge to the otherwise plain green leaf, the marked edge is considered rather stronger in this form than it is in the variety 'Hardwick Hall' (which we are resting at the moment), the flower is creamy white and scented.

£4.00 each

### SOLIDA GEORGE BAKER 76-04

A vibrant red coloured clone, originally discovered in Romania in the 1930s and further selected in Holland, being named after a famous mountaineer. These do set seed, though the resulting seedlings may themselves produce varied colours.

March/April • 4" (10cm)  
£3.50 or £10.00 for 3

### SOLIDA PURPLE BIRD 76-23

Deep purple flowers, which against the frothy pale foliage stand out well. It seems very vigorous, though the seed that it sets will itself flower in varied shades. For any soil that is reasonably free draining in sun or part shade.

March/April • 4" (10cm)  
£3.00 or £8.50 for 3



# CROCUS

CROCUS TOMMASINIANUS



CHRYSANTHUS CREAM BEAUTY



CHRYSANTHUS LADY KILLER



CHRYSANTHUS BLUE PEARL



CHRYSANTHUS HERALD



CHRYSANTHUS GYPSY GIRL

## CROCUS (SPRING FLOWERING)



The *C. tommasinianus* forms are great in light grass or in borders, self-sowing and increasing where happy, potentially getting everywhere. The bigger and later flowering *C. vernus* or 'Dutch' forms are much bigger bulbed and have the advantage of both persisting better and being relatively unaffected by rodents. The garden hybrids, forms of *C. chrysanthus*, *C. biflorus* and *C. sieberi* have been raised for garden use in suitable (but possibly more restricted) situations. Mice and squirrels are a problem with these and the other 'target' bulbs. Mesh baskets sold by garden centres and DIY stores for aquatic plants are a great help (with the addition of a home-made wire lid), these buried containers should thwart those pesky raiders.

**CHRYSANTHUS BLUE PEARL** 🍷 78-12  
A lovely goblet shaped flower with a soft lavender-blue exterior, pale silvery blue inside, bronzing at the base.  
**£3.60 for 20 or £8.30 for 50**

**CHRYSANTHUS CREAM BEAUTY** 🍷 78-14  
Elegant, pale-cream petals brushed with charcoal on the reverse, with bright orange stigmas when open wide in the sun.  
**£3.60 for 20 or £8.30 for 50**

**CHRYSANTHUS GYPSY GIRL** 🍷 78-20  
Golden yellow throughout with darker brushing on the reverse of the petals. Bigger flowered.  
**£4.30 for 20 or £10.25 for 50**

**CHRYSANTHUS HERALD** 🍷 78-21  
Yolk yellow within the flower with plum coloured backs to the petals, more highly coloured than most, though no more difficult.  
**£4.10 for 10 or £9.80 for 25**

**CHRYSANTHUS LADY KILLER** 🍷 78-16  
A gleaming satiny white interior to the petals contrasts completely with a dark velvety mauve exterior to the outer petals.  
**£4.10 for 10 or £9.80 for 25**



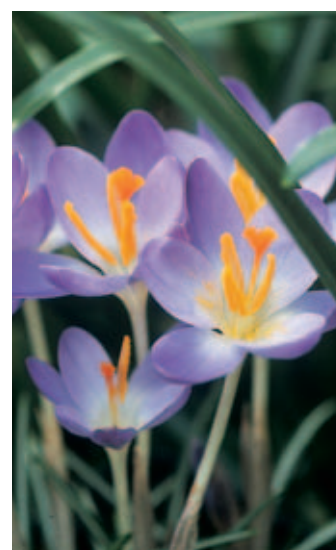
CHRYSANTHUS SNOW BUNTING



CROCUS YALTA



TOMMASINIANUS RUBY GIANT



TOMMASINIANUS  
WHITEWELL PURPLE



CROCUS SIEBERJ TRICOLOR



CROCUS TOMMASINIANUS

**TOMMASINIANUS  
WHITEWELL  
PURPLE 78-45**

This form is a little finer and paler in hue. Free-flowering with silvery mauve-pink flowers and bright yellow anthers. Ideal to plant with the intention of allowing them to seed about and naturalise. They don't last long in blazing March sunshine so try them in dappled shade. Don't mow till the leaves have gone if planted in grass, and look out for the seed-heads at soil level in June.

**£3.60 for 20, £8.30 for 50 or £15.50 for 100**

**YALTA 78-64**

Bigger and bolder than the chrysanthus hybrids above but not as big as the Dutch types below, some left over bulbs have survived in some rough grass under a birch and done quite well here, our heavier soil generally does not suit the smaller crocus, though the tommies do brilliantly. Alternating deep purple and silvery backed petals contrast nicely.

**£3.00 for 10 or £6.50 for 25**

**CHRYSANTHUS SNOW  
BUNTING 78-18**

Ivory-white with a yellow throat inside and on the outside some purple brushing over the white ground.

**£3.60 for 20 or £8.30 for 50**

**SIEBERJ  
TRICOLOR 78-58**

Early flowering where it needs a sunny site a small but a bright flower, banded dark purple, yellow and lilac with short leaves at flowering time. One of the most intensely colourful of the crocuses, and persisting.

**£3.80 for 20 or £9.00 for 50**

**TOMMASINIANUS 78-42**

Silvery lilac-lavender pink coloured flowers. These seed about and, being small in size, are not so appealing to (or found so readily) by mice and squirrels. These are the best to naturalise, in the true sense of the word (see illustration at top of p.20). These will be less uniform than the hybrids listed below which are easier to grow commercially (and to harvest) and they are of consequence somewhat cheaper! Flowering as soon as it starts to feel a bit warmer in early March.

**£3.60 for 10 or £8.50 for 25**

**TOMMASINIANUS  
RUBY GIANT 78-44**

Deep pinkish-silvery purple flowered with contrasting yellow anthers. Excellent for naturalising and an ideal accompaniment to the early dwarf daffodils and to follow the pink Cyclamen coum. Don't be deceived by poor naming, they are neither Ruby nor Giant, just 'chubbier' and darker than Whitewell Purple below.

**£3.60 for 20, £8.30 for 50 or £15.50 for 100**



## CROCUS VERNUS



CROCUS JEANNE D'ARC



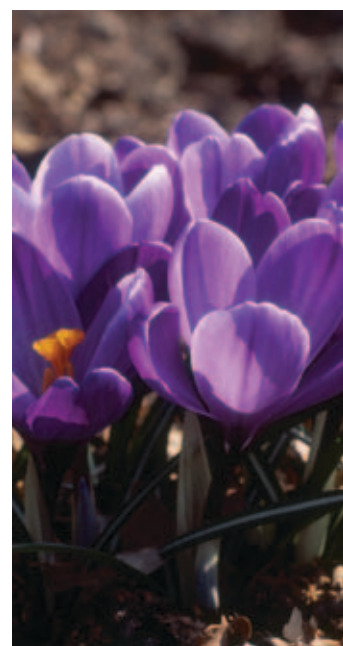
CROCUS GRAND MAITRE



CROCUS PICKWICK



CROCUS GOLDEN YELLOW



CROCUS REMEMBRANCE

## CROCUS VERNUS 'DUTCH' HYBRIDS

*Selected over the centuries, originally from C. vernus these are useful in thicker grass (though in February and March the grass will hardly be growing) and being bigger bulbed they can be planted more deeply. Flowering into the early Daffodil season they can be an effective contrast to the sea of yellow in the March garden. Plant them 4-6" (12-15cm) apart, or roughly 7- 12 per square foot. They do not quite all flower together (which is a benefit) so choose a few varieties to provide a slightly greater spread of flowering. Late February and early March, flowering 5" (12.5 cm) tall.*

### GRAND MAITRE 78-62

Lavender-violet with a silvery hue and a paler edge. Very pretty, either alone or as part of a mixed group.

**£4.00 for 15, 7.50 for 30  
or £14.00 for 60**

### PICKWICK 78-53

Strongly striped and feathered in violet over a white background. A larger flowered and vigorous crocus, generally with several flowers per corm.

**£4.00 for 15, 7.50 for 30  
or £14.00 for 60**

### GOLDEN YELLOW 78-52

Bright golden yellow flowers either for use alone or in combination with the purple forms. It has been found not to be a true C. vernus form at all but a triploid hybrid between C. vernus and C. angustifolius. Earlier than the others.

**£4.00 for 15, 7.50 for 30  
or £14.00 for 60**

### JEANNE D'ARC 78-51

A superb goblet shaped white crocus (occasionally with purple flecking). Great alone as they are strong stemmed, or else supporting a mix of other colours. Also as a foil to any of the Greigii tulips which flower at the same time, try a combination of the two in pots?

**£4.00 for 15, 7.50 for 30  
or £14.00 for 60**

### REMEMBRANCE 78-63

A deeper blue purple shade, with a good depth of colour and slightly shorter stemmed.

**£4.00 for 15, 7.50 for 30  
or £14.00 for 60**





## CYCLAMEN

CYCLAMEN COUM



CYCLAMEN COUM ALBUM



CYCLAMEN COUM ROSEUM



CYCLAMEN COUM DARK PINK

### CYCLAMEN

*Cyclamen tubers tend to do best in drier sites in lighter soils that have benefitted from the addition of some humus or leaf-mould. But here they seed through and pop up on our heavy soils even in grass. Though not cheap to begin with (these are often 4 years old already) they can be expected to live many years and the autumn flowering forms can reach dinner plate size and a great age. These are all in leaf throughout the winter and spring months so do take the attractive foliage into account and aim for a varied green tapestry. They are all completely hardy except C. repandum which will need more careful placement, although Mary Keen in the Telegraph wrote that they too had survived recent winters deeply planted in the Cotswolds. We would suggest you plant them all about 5" apart.*

*Cyclamen coum flowers in the early spring and the foliage is smooth edged and rounded, Cyclamen hederifolium flowers in the early autumn with distinctively heart or arrow shaped foliage. The two foliage types complement each other well, though the flowering is about 5 months apart. They can be successfully planted together.*

*These are all nursery grown in the UK from seed and may be ordered for either Late Summer or Autumn despatch. In the autumn the tubers start back into growth and so where orders are despatched after mid-September the leaves and roots may be showing, though this causes no harm.*

### SPRING FLOWERING FORMS

#### COUM 51-16

Plump tubers throwing mainly pink flowers with hugely varied leaf markings around the silvery 'Christmas tree' outline within the rounded leaf. I think they are the perfect companions to the early spring display of winter aconites, dwarf crocus and snowdrops under trees or shrubs, perhaps with one of the deliciously fragrant Sarcococca? These will be about 3 year old tubers, but even at that age, a year younger than the colour selected forms below.

Jan/March  
£14.00 for 5

#### COUM ROSEUM 51-17

Pale pink flowered, the easiest colour to combine with those other early spring gems. But having first flowered this spring they will have bigger tubers and so will produce more flowers than those unselected ones (above) in their first years.

Jan/March  
£13.00 for 3

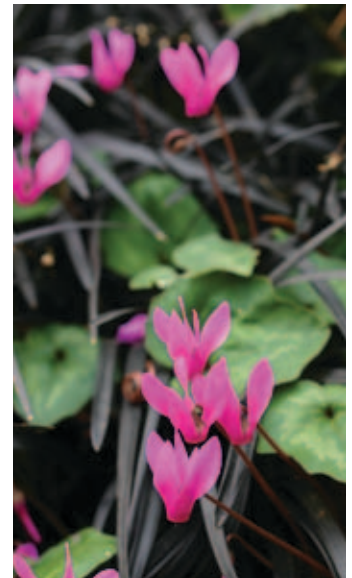
#### COUM ALBUM 51-18

Always showing a pink 'nose' but with an otherwise white flower, the petals twisted and swept back. Ideal to provide a bit of contrast amongst the pinks, or planted with your snowdrops, to maintain an all-white theme.

Jan/March  
£13.50 for 3



CYCLAMEN COUM SILVER LEAF



CYCLAMEN REPANDUM

#### COUM DARK PINK 51-31

These exciting forms have more strongly coloured carmine pink flowers. The leaf markings will vary enormously from all matt green to largely silver etched forms.

Jan/March  
£13.50 for 3

#### COUM SILVER LEAF 51-19

These demonstrate a silvery sheened leaf, still defined by the deep green edge. When planted with the other forms one builds a low 'tapestry' of different leaf forms, the flowers could be any colour.

Jan/March  
£15.00 for 3

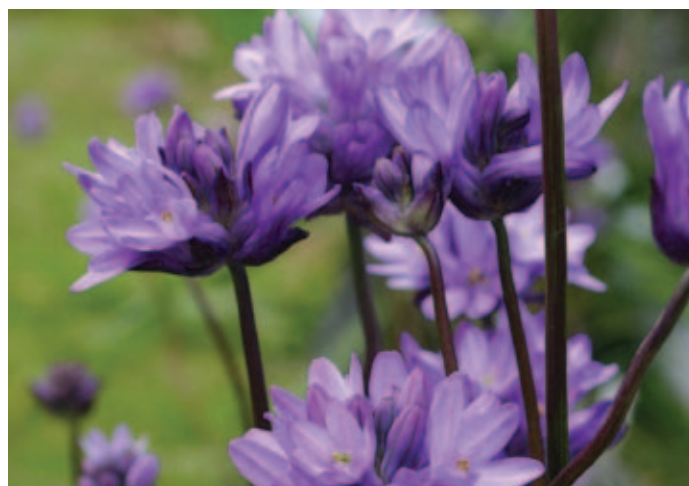
#### REPANDUM 51-29

Better in more sheltered conditions and certainly needing more shade and leaf mould in the soil where they need to be planted more deeply. Only properly hardy in the south, though special circumstances may affect that generalisation, small bulbs which need careful handling, but providing fragrant deep carmine coloured flowers in late spring. Like the others they do set seed and spread where happy.

April/May  
£5.40 each or £15.00 for 3



CYCLAMEN HEDERIFOLIUM



DICHELOSTEMMA CONGESTUM



CYCLAMEN HEDERIFOLIUM ALBUM



DICHELOSTEMMA IDA-MAIA



EPIPACTIS GIGANTEA

## AUTUMN FLOWERING FORMS

### HEDERIFOLIUM 51-07

The toughest and most enduring of all cyclamen, with long petalled (and mostly) pale pink flowers in the autumn (when flowering without their foliage) followed by glossy dark green heart-shaped foliage through winter, often beautifully marked. These will be three or more years old and will get better and better over the years, eventually becoming very large and corky tubered.

Aug/Oct  
£12.00 for 5

### HEDERIFOLIUM ALBUM 51-08

Selected white flowered tubers of the form above, these would have been selected out from amongst the pinks when they flowered last autumn. Use just a few to provide an interesting contrast, or alone as a beacon in October to lighten up a dark corner.

Aug/Oct  
£10.50 for 3

## DICHELOSTEMMA

*Allium* like bulbs of North West America with nice stories to go with them. Unusual plants here but normally hardy and tough enough in lighter soils, though recent wet winters have been testing for them in heavier soils. They grow much as any *Allium* but flower later. The sap from cut stems can be caustic to the skin.

### CONGESTUM 82-04

From the far west of America, producing a compact, hens egg sized ball, formed of very long-lasting lilac-purple flowers, much like an *Allium* head, on a more slender but very wiry stem. They will grow where one would expect *Alliums* to thrive.

June • 24" (60cm)  
£4.50 for 5 or £8.00 for 10

### IDA-MAIA 82-05

Spectacular red, yellow and green coloured flowers, shaped like cigars, opening at the tip of a wiry stem. Named after the daughter of a Californian stage coach-driver and pollinated (in the wild) by humming-birds! Grown much as any *Allium*.

June • 18" (45cm)  
£2.90 for 5 or £8.00 for 15

## EPIPACTIS

### GIGANTEA 83-04

Probably the most easily grown hardy ground orchid one can find, good for humus rich soil in dappled shade, ideally slightly moist year round. In its native USA it is called the Chatterbox Orchid after the bottom 'lip' which trembles in the breeze.

Summer flowering • 12" (30cm)  
£5.00 each



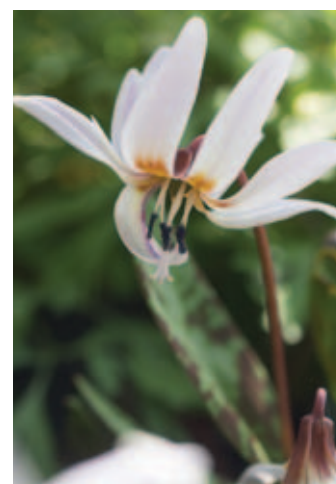
ERYTHRONIUM PAGODA



ERYTHRONIUM WHITE BEAUTY



ERYTHRONIUM OLD ABERDEEN



ERYTHRONIUM SNOWFLAKE



ERYTHRONIUM REVOLUTUM



ERYTHRONIUM DENS CANIS

## ERYTHRONIUM

*The Dog's Tooth Violet is the only form with a European origin (the name referring to the shape of the bulb), in America where more are natives the common name for them is Trout Lily (due to the markings on the leaves). They grow best where they have cool humus rich soil conditions in the spring, usually grown in dappled shade, with a drier resting phase in deeper shade in summer. They all have interesting leaves and combine well with Dicentra, Trilliums, Epimedium and the Anemone nemorosa. Knightshayes Court, or The Garden House at Buckland Monochorum, both have good displays.*

### DENS CANIS 🍷 84-08

The European 'Dog's Tooth Violet'. Magically mottled leaves in green, brown and purple; usually pale pink to lilac but sometimes white flowered. They benefit from good light in the spring, though if it gets warm too early the flowers are rather fleeting. Some shade may then help. Plant 3" to 4" (7-10cm) apart.

March • 6" (15cm)  
£4.50 for 3 or £9.50 for 7

### DENS CANIS OLD ABERDEEN 🍷 84-09

More deeply coloured than the standard E. dens canis with exceptionally good leaf markings. First named (I believe) by Carol Scott whom I met and stayed with many years ago near Glasgow. They should increase quite rapidly.

March • 4" (10cm)  
£4.50

### DENS CANIS SNOWFLAKE 🍷 84-11

A white flowered selection, worth a closer look when in flower (though admittedly they are very close to the ground) in order to admire the extraordinary mauve-purple stamens.

March • 4" (10cm)  
£4.00 or £11.00 for 3

### PAGODA 🍷 84-17

A more vigorous hybrid first discovered in the late 19th Century, it is a bigger plant altogether with yellow flowers. Easier to grow than any of the others, starting with a relatively large finger sized tuber. Ideally planted in some shelter from spring tempests (the larger leaves tend to crack in strong winds) and in humus rich soils where they will clump up. Plant 7" to 9" (16-20cm) apart.

April • 12" (30cm)  
£4.00 for 3 or £11.00 for 9

### REVOLUTUM 🍷 84-21

The 'wild' pink flowered Erythronium, originally from the western seaboard of North America, right through from California to Vancouver but now a fairly widespread and welcome highlight in woodland gardens here. They seed around quite vigorously and mix in very naturally with wood anemones, A. apennina, and all those low gems of April. Never in flower for long, and the leaves sometimes marked with brown flecks.

April 8" (20cm)  
£5.50 or £15.00 for 3

### WHITE BEAUTY 🍷 84-15

Probably the best Erythronium for a small garden and possibly my favourite, if you have visited Knightshayes in Devon in early April you'll know why. A very handsome and compact hybrid with marked leaves and creamy white flowers, often multi-stemmed on established plants. Pamper it with deep leaf mould rich soils in the summer shade of trees or shrubs. Plant 5" (12cm) apart.

April • 8" (20cm)  
£4.50 or £12.50 for 3



# FRITILLARIA

FRITILLARIA ACMOPETALA



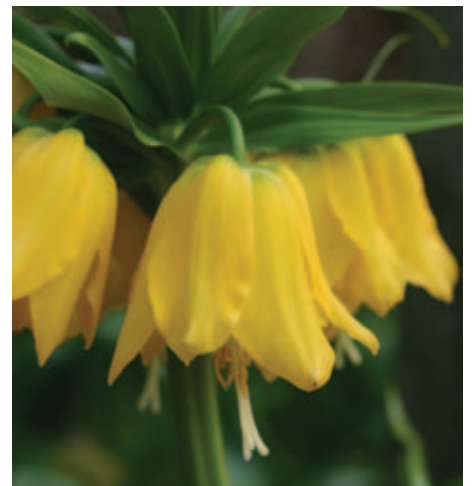
FRITILLARIA WILLIAM REX



FRITILLARIA ELWESII



FRITILLARIA RASCAL CHOPIN



FRITILLARIA IMPERIALIS LUTEA

## FRITILLARIA

The plants listed below are illustrative of the amazing diversity of the family, from small bulbs of moist riverine meadows to giants of near desert like locations. Sadly few of the many species of *Fritillaria* are suited to 'ordinary' UK garden conditions but, particularly if you can invest some effort into their planting and exercise judgment in where to plant them, the following are suitable. Our website does provide more detail on all of them.

### ACMOPETALA 85-04

A native of the Eastern Mediterranean with one or more hanging jade green bell shaped flowers, reflexed at the opening, with chocolate brown markings. For sun, or part shade, in drier conditions out of the strongest wind.

April/May • 12" (30cm)  
£4.80 for 3 or £7.60 for 5

### ELWESII 85-07

Dark stemmed with narrow slate and green flowers covered in a fine bloom. They hail from southern Turkey and will take our cold, but do better for a dry summer rest, so that calls for well drained soils. Quite tall so avoid really windy sites.

April • 15" (35cm)  
£6.00 for 3

### IMPERIALIS WILLIAM REX 85-20

A selected form of the Crown Imperial Lily. Deeply coloured orange-red flowers which ring a strong dark stem. A top knot of green leaves above the flower makes them look quite exotic. For rich sunny soils, well-watered in spring but well drained in summer, sheltered from wind and planted 6-8" (15-20cm) deep.

April • 30" (75cm)  
£6.00 or £16.00 for 3

### IMPERIALIS RASCAL CHOPIN 85-23

The rascal series is the result of years of interbreeding *F imperialis* and *F.raddeana* to produce hybrids that would flower from smaller bulbs (eventually) bringing the cost down, but they are still new! I like their daintier stature, the less upright stance and their earlier flowering, they ought to have more time to 'put on weight' before going dormant in order to flower more reliably in future years.

March/April • 30" (75cm)  
£6.00 or £16.00 for 3

### IMPERIALIS LUTEA 85-21

Strong yellow flowers on a pale green stem, no more difficult to grow than the red flowered form. Both grow very rapidly in the early spring and needing to quickly replenish that effort, we suggest that they benefit from liquid feeding whilst in growth to encourage further flowering.

April • 36" (90cm)  
£6.00 or £16.00 for 3

## Need bigger quantities of our bulbs?

There are occasions when our pack sizes are unsuitable for bigger projects or large gardens. If this is the case do email us for a specific quotation for your requirements. We do not do a 'trade' list. You'll get the same quality of bulbs as all our retail customers.



FRITILLARIA RADDEANA



FRITILLARIA PONTICA



FRITILLARIA PALLIDIFLORA



FRITILLARIA MELEAGRIS



FRITILLARIA MELEAGRIS ALBA

**MELEAGRIS** 🏆 85-27

The Snakeshead Fritillary. Maroon-coloured, serpent like, darkly chequered nodding bells, a smattering of which are paler or even white. In Elizabethan times it was widespread – typically in damp, grassy, late-cut meadows and in moist alluvial soils. Increasing and self-seeding in similar conditions. They are best ordered early to allow for timely planting. Plant 4" (10cm) deep in drifts, 4" (10cm) apart (10-15 per sq ft.)

March/April • 12" (30cm)  
**£3.30 for 15, £10.50 for 50  
 or £20.00 for 100**

**MELEAGRIS**

**ALBA** 🏆 85-28

Whilst the bulbs of *F. meleagris* (above) ought to be dominantly dark, these should be the converse but darker ones do creep in occasionally. For darker corners or under late leafing shrubs they are ideal, the paler colours standing out in the shade.

March/April • 12" (30cm)  
**£4.50 for 5 or £12.50 for 15**

**PALLIDIFLORA** 🏆 85-36

Pale straw green bells, speckled within with darker flecking. Usually the broad leaves and relatively large flowers catch the wind when the stem becomes more S shaped, supported in the middle by the ground. This actually makes it easier to see within the flower! None too difficult and charming in a raised bed or well drained soils.

April 12" (30cm)  
**£3.50**

**PONTICA** 🏆 85-39

Bell shaped flowers (hardly showing the flared lip that you see in *F. acmopetala*) with green and brown markings. Shorter too and more suited to a bit of shade, seeding freely where happy.

April/May • 9" (25cm)  
**£4.75 for 3 or £7.50 for 5**

**RADDEANA** 85-41

Related to the Crown Imperials but rather shorter and more subtle with a less formal arrangement of flowers in yellowish green. They root early in the autumn and then emerge early and race up to flower quickly. They will need a bit of shelter from the wind and good light, though are very resilient to cold.

April 18" (45cm)  
**£6.50**



GLADIOLUS BYZANTINUS



GLADIOLUS MIRELLA



GLADIOLUS NYMPH



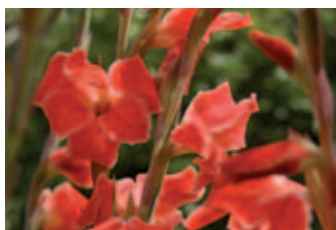
HYACINTHOIDES NON SCRIPTA



GLADIOLUS THE BRIDE



HYACINTHOIDES NON SCRIPTA ALBA



GLADIOLUS ATOM

## GLADIOLUS

*The 'named' dwarf gladioli flower in the early summer. Short enough not to need staking, they do not overpower the garden as do some of the larger forms. These named forms make particularly good cut flowers too. They grow away early, and this may result in the foliage being susceptible to severe late frost, so mulching is a possible requirement. Plant them in a sheltered site in well-drained soil, 6" (15cm) deep, 4" (10cm) apart on a bed of sharp sand. The winter dormant hybrid forms are also sold in the spring, if yours is a cold garden buy them then instead, the voles are less likely to get to them.*

### BYZANTINUS 🏆 88-04

Rich magenta coloured flowers with white flashes. There is skulduggery about regarding what is sold under this name. A poor relation to ours is *G. byzantinus* ssp. *communis* which is often passed off as the same plant. They are like chalk and cheese. These are free flowering plants with large strongly coloured flowers, the seed of which is probably infertile. They are lovely, colourful cottage garden plants, but in leaf early in the year in cold gardens (or in the north) they may need a mulch over winter. For sun or slight shade. Plant 4" (10cm) apart.

June • 24" (60cm)  
£6.00 for 5 or 11.50 for 10

### ATOM 88-18

Dusty orange-red flowers, each enriched by white piping, highlighting the petal shape particularly where the petals overlap one another. Best in well drained soils and in the sun.

July • 30" (75cm)  
£4.60 for 10 or £10.00 for 25

### MIRELLA 88-17

Pillar box red in flower with good upright stems. Clean and bright.

July • 30" (75cm)  
£4.60 for 10 or £10.00 for 25

### NYMPH 88-11

White flowered, these marked with loud pink and purple lipstick kisses on the petals. Much less formally upright, the bigger flowers bending the stems this way and that, so they weave through the surrounding plants.

May/June • 24" (60cm)  
£4.60 for 10 or £10.00 for 25

### × COLVILLII THE BRIDE 88-06

Starry, tapered, gleaming white flowers tinged with green at the throat, a strong-growing favourite of ours and our customers. Do however ensure that the soil is well drained and if you have failed before try them again in deep pots protected from the worst of the cold till spring and then plant these out into your sunny border.

June • 18" (45cm)  
£4.60 for 10 or £10.00 for 25

## HYACINTHOIDES

*The family name that covers all the varied 'Bluebells', in the past listed by us within the Scilla. The true Scillas can still be found under their own heading.*

### NON SCRIPTA 125-10

The English Bluebell. Violet blue nodding bells which glisten in damp shady glades. Self-seeding, so increasing steadily but also fertile with any foreign 'Spanish' forms locally. Plant 4" (10cm) deep and 4" (10cm) apart, working on 15 per sq. ft.

Apr/May • 12" (30cm)  
£4.50 for 10 or £10.50 for 25

### NON SCRIPTA ALBA 125-12

Rarely wild populations of English Bluebells have white flowered plants, it is from those that these derive, they will stand out in a sea of blue.

Apr/May 12" (30cm)  
£6.50 for 3



## HYACINTHUS

HYACINTHUS WOODSTOCK



HYACINTHUS GIPSY QUEEN



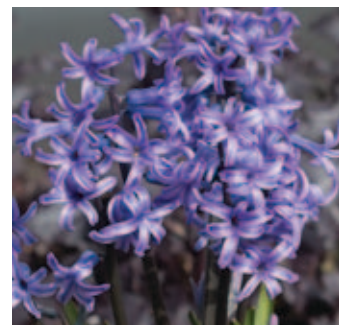
HYACINTHUS DELFT BLUE



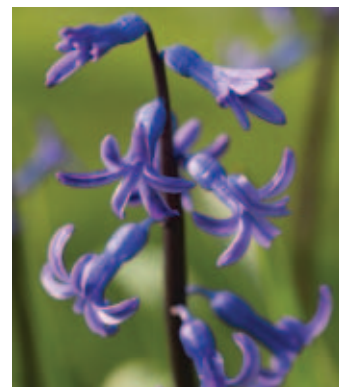
HYACINTHUS MISS SAIGON



HYACINTHUS CARNEGIE



HYACINTHUS MULTIFLORA ANASTASIA



BLUE 'ROMAN' HYACINTHS



WHITE 'ROMAN' HYACINTHS



HYACINTHUS MULTIFLORA WHITE

## HYACINTHUS

The 'prepared' bulbs in the Late Summer section (Page 6) are more suited to forcing for very early indoor display. The ones below can also be potted for use in the house, where they will flower in Feb-March, but could look equally magnificent in pots in March and April or planted in the garden. All are tremendously fragrant. They prefer very well drained and sunny situations, reaching a height of 12" (30cm).

**CARNEGIE** 86-12  
Dense glossy white flowered spikes.  
£2.90 for 3 or £6.30 for 7

**DELFT BLUE** 86-11  
Compact spikes of mid blue.  
£2.90 for 3 or £6.30 for 7

**GIPSY QUEEN** 86-36  
Neither yellow nor salmon, but not pink either, though quite a refreshing and less dominant colour in the garden in the spring.  
£2.90 for 3 or £6.30 for 7

**MISS SAIGON** 86-21  
Richly violet purple  
£2.90 for 3 or £6.30 for 7

**WOODSTOCK** 86-17  
Deep beetroot purple, one of the most dramatic. Some big pots planted up with Woodstock and Carnegie decorated Alan's steps one spring, they were much admired.  
£2.80 for 3 or £6.00 for 7

**MULTIFLORA ANASTASIA** 86-20  
The multiflora forms are more slender, less dense and less soldierly in appearance, in effect less dominating of the little flowers with which they bloom so early, this is the prettiest blue with darker stems.  
£6.50 for 3 or £14.00 for 7

**MULTIFLORA WHITE** 86-09  
Simply white when fully open, quite yellow in bud but slighter in appearance than the 'standard' orientalis forms.  
£6.50 for 3 or £14.00 for 7

## 'ROMAN' HYACINTHS

We have been asked repeatedly over the years to try and list these sought after plants. These 'wild' forms originating in southern France went out of fashion as breeders produced more and more sophisticated colours and forms. We have a limited number of white or blue flowered bulbs – with well-spaced narrow flared flowers on multistemmed plants. Natural, unregimented and simple, as well as fragrant. These do flower very early in their first year, we think that they will 'settle down' to a more expected March/April flowering in subsequent years.

**WHITE ROMAN HYACINTHS** 86-32  
£5.00 for 3

**BLUE ROMAN HYACINTHS** 86-33  
£5.00 for 3



IPHEION ALBERTO CASTILLO



IPHEION FROYLE MILL



IPHEION FROYLE MILL



IRIS APOLLO



IPHEION CHARLOTTE BISHOP



IRIS GYPSY BEAUTY



IRIS AUTUMN PRINCESS

## IPHEION

*These often start flowering early with pretty star shaped flowers, but their main display is reserved for late March and early April. They are easy in any reasonably well drained soils and a moderately sunny site and though the leaves are burnt off in a heavy frost (with the associated garlic smell) they seem to recover in weeks. The named forms are better and more interesting than the species forms which are widely available but tend to be more invasive.*

### ALBERTO CASTILLO 🏆 97-09

Longer stemmed, which places the flowers well above the foliage and they pick well for small posies, but to prevent the longer stems from flopping plant them in full sun. Vigorous, with very white flowers over grey green foliage. They have grown abundantly so prices have dropped.

March/April • 9" (22cm)  
£4.50 for 10

### CHARLOTTE BISHOP 97-10

A pretty pink flowered form, dark pink on opening, fading gracefully in the sun, vigorous and increasing.  
March/April • 6" (15cm)  
£3.50 for 5

### FROYLE MILL 🏆 97-08

Selected in Hampshire, with stary violet flowers, vigorous.

March/April • 6" (15cm)  
£3.50 for 5

### ROLF FIEDLER 🏆 97-06

Much more disc shaped flowers on stronger more upright stems, opening wide in a pretty sky blue.

March/April • 6" (15cm)  
£3.50 for 5

## IRIS X HOLLANDICA

*These are hybrid forms of Iris xiphium that the florists use to such good effect in the late spring and summer during their season. But the bulbs are reasonably inexpensive and you could easily grow your own? On their own roots they are likely to last longer than cut flowers too! These would be planted 4-6" (10-15cm) apart in sunny conditions and in lighter soils.*

### APOLLO 99-04

With broad yellow falls (the lower part of the flower looking like a tongue) and creamy white, even blue tinted, standards (the three upright parts) these have good contrasting colours on sturdy plants.

May/June • 18-24" (45-60cm)  
£2.70 for 5 or £7.50 for 15

### AUTUMN PRINCESS 99-09

The name reflects the autumnal hues in the bronzy flowers rather than suggesting that these flower months later than the others.

May/June • 18-24" (45-60cm)  
£2.70 for 5 or £7.50 for 15

### GYPSY BEAUTY 99-06

Methyl violet standards with paler falls. It wasn't till I saw these that I realised what 'methyl blue' is, that strange nearly translucent pale purple blue of dilute methylated spirits. These are pretty trouble free.

May/June • 18-24" (45-60cm)  
£2.70 for 5 or £7.50 for 15

IRIS





IRIS PROFESSOR BLAAUW



IRIS SILVERY BEAUTY



IRIS MONT BLANC



IRIS GEORGE



IRIS RED EMBER



IRIS KING OF THE BLUES



IRIS LADY BEATRIX STANLEY



IRIS GORDON

**PROFESSOR BLAAUW** 99-08

Deep blue with a yellow stripe. The deepest of rich blues. You should really expect two flowers per stem, and will see the pregnant swelling of the buds within the stems before they burst out.

May/June • 18-24" (45-60cm)  
£2.70 for 5 or £7.50 for 15

**RED EMBER** 99-10

Brownish red as a description seems not to offer too much promise, but the trial of these at Wisley suggested this to be a candidate for stardom.

May/June • 18-24" (45-60cm)  
£2.70 for 5 or £7.50 for 15

**SILVERY BEAUTY** 99-11

White and blue flowers with the mature leaves providing a very silvery sheen implied in the name.

May/June • 18-24" (45-60cm)  
£2.70 for 5 or £7.50 for 15

**IRIS LATIFOLIA**

*The 'English' Iris, though strangely the plants are not native to England but to the Pyrenees. These were a popular group before the Dutch Iris (above) became widely available. But they are still hugely useful though rather less well known. They are hardier, later flowering and very late to emerge, the foliage is rarely out of the ground till mid-March.*

**KING OF THE BLUES** 100-04

These two forms are both happier in heavier soils that retain moisture, in sun or part shade, maybe even in light grass. These are deep midnight blue with a yellow and white 'beard'.

June/July • 14-20" (35-50cm)  
£5.00 for 5

**MONT BLANC** 100-05

White flowered with a fine yellow and white 'beard'. They get planted no less than 4" (10cm) apart.

June/July • 14-20" (35-50cm)  
£5.00 for 5

**IRIS RETICULATA**

*The reticulata name refers to the netted tunic around the bulb. They are derived from plants native to the Middle East and do best in well drained conditions with a warm dry summer rest. They are not so easy to keep going from year to year. It helps to plant them deeply (5", 12cm). The best situation would be a raised bed in the sun with well drained soil conditions, there you'll be able to admire them up close, and smell the scented ones. 15 bulbs will nicely fill a 9" planter or pot for a spring treat.*

**HISTRIOIDES GEORGE** 101-06

Solid, broad, plum-purple petals with a yellow and white blotch, at flowering time the leaves are undeveloped so it is easier to get your nose close for that glorious scent.

Early February/March • 6" (15cm)  
£3.60 for 15 or £5.50 for 25

**HISTRIOIDES LADY BEATRIX STANLEY** 101-22

A velvety rich blue with pale flecking on the lips and with a yellow stripe down the length of the falls, and scented of violets. Flowering before the leaves extend so they are unobtrusive at flowering time.

February/March • 6" (15cm)  
£3.50 for 5

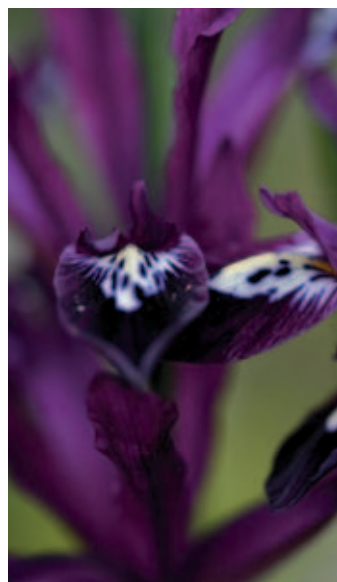
**GORDON** 01-20

The standards are pale dove grey blue, the falls darker, each marked with orange and white. Earlier flowering.

February/March • 6" (15cm)  
£3.60 for 15 or £5.50 for 25



IRIS KATHARINE HODGKIN



IRIS PAULINE



IRIS MARY BARNARD



IRIS WALTER BUTT



IRIS HARMONY



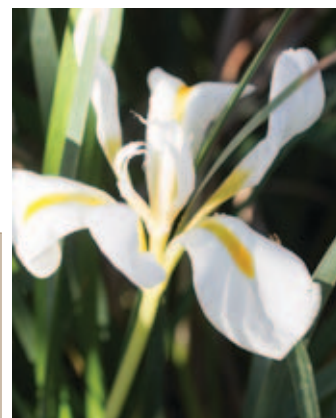
IRIS JS DIJT



IRIS MARONDERA



IRIS UNGICULARIS



IRIS UNGICULARIS ALBA

### HARMONY 101-11

Intensely gentian blue flowers, each with a small yellow and white crest on the falls. The most popular of all the forms.

February/March • 6" (15cm)  
£3.60 for 15 or £5.50 for 25

### JS DIJT 101-12

A rich, velvety, reddish plum-purple colour with a strong fragrance in warm sunlight. Later flowering than most of the forms.

February/March • 6" (15cm)  
£3.60 for 15 or £5.50 for 25

### KATHARINE HODGKIN 101-07

An utterly distinct hybrid, raised by EB Anderson, predominantly yellow with blue and sea-green veining and markings. Out of them all this is the most persisting and perennial form in a gritty rich soil in a sunny site.

February/March • 6" (15cm)  
£3.00 for 5 or £5.50 for 20

### PAULINE 101-13

Dark velvety purple flowers with bright white highlights on the falls. Mid-season flowering.

February/March • 6" (15cm)  
£3.60 for 15 or £5.50 for 25

## IRIS UNGICULARIS (STYLOSA)

*A firm favourite for the winter garden. They need a sunny site and are often found to be growing on very poor soil, but they will perform better still in something half decent. Avoid shearing off the untidy foliage too much in the summer, rake out the dead leaves instead in the early autumn and give the plant some water and feed as it is then that they make their new roots and flower buds. New divisions need careful planting and firming in, regular watering till established and (if possible) some protection in the first winter.*

### MARY BARNARD 102-05

Velvety purple blue with white and golden markings on the falls. Darkest of all and a glossy marvel in the spring, the foliage shorter and darker. Discovered by EB Anderson near Algiers in 1962.

Feb/March • 15" (32cm)  
£6.50

### MARONDERA 102-13

From a garden near the town of that name in Zimbabwe. Larger flowered and slightly darker than the species form and just as tough as the others.

Feb/March • 15" (32cm)  
£6.00

### WALTER BUTT 102-06

Longer and paler leaved and with more upright foliage. The flowers are the largest of all in a pale ice blue with yellow at the throat. The first form to flower and the most scented too.

Nov/Feb • 18" (45cm)  
£6.50

### UNGICULARIS 102-04

The species plant with pale mauve flowers and paler silvery lilac standards. Tug firmly from the base of the furled flower buds to pull them out to take them into the house where the warmer temperatures will open the flowers quite quickly.

Feb/Mar • 15" (32cm)  
£5.00

### UNGICULARIS ALBA 102-11

All white flowered except for the yellow markings at the throat. Reportedly slightly less tough than its sisters but they have bloomed prodigiously this year.

Feb/Mar • 15" (32cm)  
£7.00



IRIS BUCHARICA



IRIS GRAMINEA



## LILIUM

LILIUM MARTAGON CHAMELEON



IRIS TUBEROSA (HERMODACTYLUS)



LILIUM MARTAGON



LILIUM CANDIDUM

## IRIS (OTHER TYPES)

### BUCHARICA 103-09

Easy to grow in a sunny border, despite the fact that it originates from Central Asia, bright glossy leaves and with creamy white and yellow flowers.

March/Apr • 12" (30cm)  
£3.00 for 3

### GRAMINEA 103-06

A refreshed stock after work on dividing tired plants and planting them in better ground a few years back has paid dividends and these look far better for the effort so can be sold again. Grassy leaved with plum coloured scented flowers, appreciative of a sun warmed soil.

May/June 10" (25cm)  
£6.00 for 3

### TUBEROSA (HERMODACTYLUS)

103-10

The Widow Iris with translucent black and jade-green flowers on long rush-like leaves. Requiring time to establish, plant in full sun, loves it around heat absorbing sun-drenched paving. Do try and order early for early autumn planting or you could include some on a Late Summer order (see page 6).

April • 6" (15cm)  
£4.50 for 10

## LILIUM

*Lilies would have to come near the top of any list of favourite bulbs. For stature, grace and perfume they are unbeatable, but to ensure longevity it helps to get a couple of things right. Unless it says otherwise in the text below do incorporate plenty of organic matter in the area to be planted, having chosen a site that is of good, probably rich soil, not too dry in summer, and possibly shaded – many lily flowers will last longer in cooler shade. Plant at least 5" deep. If planting in the confinement of pots, even more care is needed, particularly with regular watering. Lily beetle are problem in warmer parts. Readily seen as red and black beetles that eat any foliage of the Liliaceae (which includes the Fritillaria). They drop off and hide on the ground if you alarm them, but picking off the adults and cleaning the messy black 'eggs' off the foliage is moderately effective (and satisfies the lust for retribution) although Provado used systematically seems to reduce future generations more effectively.*

*Please Note: The dormancy of these lilies means that there is a cut-off date after which it is too late to order L. candidum (which can also be ordered for Late Summer despatch). The Martagon lilies, conversely, are usually not ready for despatch till mid-October so if you include them on your order it may affect the delivery time of your whole order (we try hard to save costs and have your order all come at once)...*

### CANDIDUM 🌷 107-14

The 'Madonna Lily', large bulbs of this iconic plant (often seen as an icon in early religious paintings). Satin white petals with a delicious fragrance. Best with shallow planting in a warm sunny spot in poor soil. Order only before mid-September (also available from the Late Summer Section, illustrated on page 7).

June • 36" (90cm)  
£6.00 or £16.50 for 3

### MARTAGON 🌷 107-15

Refined and generally smaller lilies (in stature and flower size) with petals that reflex strongly. For dappled shade in nice organic soil, the purple petals variable in colour with darker speckling.

June/July • 36" (90cm)  
£5.50 or £15.00 for 3

### MARTAGON CLAUDE SHRIDE 107-41

As for the form above, which will be variable in their heights and shade of colour, these are all dark mahogany red.

June/July • 36" (90cm)  
£7.00



LILIUM MARTAGON CLAUDE SHRIDE

### MARTAGON CHAMELEON 107-42

A selected paler form, perhaps more visible in shade where paler flowers stand out better, with pretty darker pink markings.

June/July • 36" (90cm)  
£7.00



LILIUM REGALE



LEUCOJUM GRAVETYE GIANT



MAIANTHEMUM VAR. KAMTSCHATICUM



LILIUM MARTAGON ALBUM



MAIANTHEMUM BIFOLIUM



MATHIASELLA BUPLEUROIDES GREEN DREAM

## MARTAGON ALBUM

107-16

Beautiful and refined plants, apple white with sulphur yellow stamens; pamper them with a good leafmould rich soil – invariably better in shade where white stands out.

June/July • 36" (90cm)  
£6.40 or £18.00 for 3

## REGALE

107-04

Familiar and much loved. Ivory-white trumpets, flushed with pink providing great wafts of beautiful scent. Accommodating in most gardens, either in the borders or large deep pots. Autumn planted L. regale bulbs always seem to do better than spring planted ones. With longer to root before they flower that would be logical.

July • 36" (90cm)  
£7.00 for 3 or £15.00 for 7

## LEUCOJUM

### AESTIVUM GRAVETYE GIANT

106-07

The Loddon Lily, also known as Summer Snowflakes, with white, hanging, bell-shaped flowers and hence often confused with snowdrops (despite flowering later, but not really in summer). Clusters of large white bells, emerald-tipped, hang from bare upright stems above the glossy green daffodil-like foliage. Particularly happy in damp, even winter-flooded, partly shaded areas, but adaptable elsewhere. Daffodil-like bulbs, planted 5" (12cm) deep and 6" (15cm) apart.

April/May • 18" (45cm)  
£4.00 for 3 or £9.00 for 7

## MAIANTHEMUM

### BIFOLIUM

110-04

Small plants with leaves that look a bit like tiny Hostas. These are plants of shade with ground covering possibilities in nice leafy damp dappled shade. Can form a dense matt. The leaves appear in the spring opening out with a welcome fresh greenness. The flowers are like small white plumes. They are a native of northern England growing from small wiry roots.

May • 4" (10cm) tall  
£4.30 for 5

### BIFOLIUM VAR. KAMTSCHATICUM

110-05

Much larger than the European form, these are native to the Pacific rim. A bright green foliage plant with shiny sculptured leaves and tassle-like white flowers.

May • 12" (30cm)  
£4.30 for 5

## MATHIASELLA

*A Mexican umbellifer which was first described only in 1954. These are architectural plants and seem to do well in full sun or part shade with green foliage in spring, and in autumn pink and purple tints. The flowers seem to be sterile and last for months, initially vibrant green but coloured with purple later in the year.*

### BUPLEUROIDES GREEN DREAM

69-04

With the appeal and appearance of Hellebores or Angelica and with a hint of Euphorbia, all of which are garden favourites, one can see how these have become popular. Plants from 1 litre pots that ought to settle in this winter and possibly flower in 2016.

May • 24" (60cm)  
£6.00



## MUSCARI



MUSCARI OCEAN MAGIC

### MUSCARI

The 'Grape Hyacinths', and as the name implies some are heavily scented. All do well in the drier, sunny conditions provided under deciduous shrubs in the early spring, with summer shade above and, as mentioned before, part of the group of 'Little Blue Jobs', that create the mood and the 'chorus' to the spring display. Some may be better in warmer and more protected situations (see the individual entries below). The common and weedy 'ordinary' Grape Hyacinth (*M. armenicum*) is undoubtedly best avoided - it gives the well behaved *Muscari* a bad name. Plant them 4" (10cm) deep and 2" (5cm) apart.

### AZUREUM (PSEUDOMUSCARI) 🌱

111-15

Probably the easiest to grow and not at all invasive. Tightly packed powder-blue flowers, open at their tips. For a well-drained sink or rockery or in light soils at the front of a spring border.

March • 5" (12cm)  
£4.00 for 10 or £9.40 for 25

### AUCHERI BLUE MAGIC 111-20

Bright blue with white rims to the mature flowers. These colour forms are derived from the species which is native to alpine turf in Turkey, they will not be invasive here.

April • 5" (12cm)  
£3.00 for 10 or £7.00 for 25

### AUCHERI OCEAN MAGIC 111-21

Sea blue flowers with pale tips like white bubbles on the surf line, I suspect the source of the inspiration for the name?

April • 5" (12cm)  
£4.00 for 10 or £9.40 for 25

### AUCHERI WHITE MAGIC 111-14

The aucheri forms are less vigorous, (and by implication not invasive) so suited to smaller gardens. This selection has attractive pale green flower buds opening white, initially quite pointed but rounded when in full flower.

April • 5" (12cm)  
£4.50 for 10 or £10.75 for 25



MUSCARI AUCHERI BLUE MAGIC



MUSCARI AUCHERI WHITE MAGIC



MUSCARI BOTRYOIDES ALBUM



MUSCARI AZUREUM

### BOTRYOIDES ALBUM 111-06

A dwarf form, and not a thug; small flowers like strings of neat little pearls strung on pale stems. Scented.

April • 6" (15cm)  
£3.00 for 10 or £7.00 for 25

### MACROCARPUM GOLDEN FRAGRANCE 111-10

A selected form of *M. macrocarpum*, which is evidently more cold tolerant. Grow this where you can enjoy its heavenly banana tinged perfume, protected from excessive frosts. Violet flowers, turning yellow as they age. They like a hot dry spot.

April • 7" (18cm)  
£4.00 for 3



MUSCARI MACROCARPUM  
GOLDEN FRAGRANCE



MUSCARI VALERIE FINNIS



NARCISSUS FEBRUARY GOLD



NARCISSUS BARRII CONSPICUUS



MUSCARI MUSCARIMI

### MUSCARIMI (AMBROSIACUM) 111-11

Outstandingly sweetly musk scented, a strong and lovely perfume from a creamy yellow flower that fades to a gunmetal blue-grey colour. A sunny scree bed or a sheltered rockery may do. They will need a warm sunny dry spot to thrive, but do it for the perfume.

April/May • 6" (15cm)  
£4.00 for 3

### VALERIE FINNIS 111-18

A form with tightly packed ropes of scented powder blue flowers, best grown in open sunny conditions.

March • 7" (18cm)  
£2.50 for 5 or £7.00 for 15

## NARCISSUS (DAFFODILS)

The highlight of the April garden in a 'normal' year, though some earlier ones are often welcome and the last will flower in May. Do plant them really quite deeply with 4-6" (10-15cm) of soil over the biggest bulbs, where they will remain cool and moist in the spring and safe from gardening activity above them in the summer. Do not be tempted to cut back or tidy the foliage after flowering – this period of replenishment of the bulb's starchy food reserves is critical to future flowering. A liquid feed whilst the leaves are still green will benefit clumps in poorer soil, but generally feeding is unnecessary. I would suggest that you plant in groups (and particularly any that you 'naturalise') resulting in swathes of the same variety and not a jumbled crowd – the effect is generally better. Most should clump up from being planted about 4-6" (10-15cm) apart, further apart for more 'relaxed' planting.

*Divisions: The number in brackets after the name represents the type of flower expressed by the divisions within the Narcissus family: 1= trumpet, 2= large cupped, 3= small cupped, 4= double flowered, 5= triandrus forms, 6= cyclamineus types, 7= jonquilla forms, 8= tazetta forms, 9= poeticus types, 10= bulbocodium types, 12= miscellaneous, 13= species and wild variants (more suitable for naturalising).*

The suggested flowering month should be used as a guide only – annual variation can be great!

## NARCISSUS – PROTECTED

For indoor or very protected situations.

These are best suited to forcing in pots for indoor display with a huge scent. They do need lots of light and only protection from actual frost, so nothing too warm. Some are also available for even earlier planting if you order from the Late Summer section.

### PAPERWHITE ZIVA (8) 113-52

Early to flower from being forced (grown in warmer conditions for early display). We work on about eight to ten weeks to first bloom from potting. White and multi-headed with a huge perfume. Plant them shallowly in the compost and in good light so they don't get too tall. Not reliably hardy outside. Big bulbs.

December/January • 15" (38cm)  
£6.00 for 5 or £11.00 for 10



NARCISSUS PAPERWHITE ZIVA

## NARCISSUS – GARDEN VARIETIES

### BARRII CONSPICUUS (3) 113-75

Dating back to 1869. Simple outer petals in bright sulphur yellow, fading to primrose around a short dark cup prominently edged in orange. It has a simple and refined beauty, and scent. An elegant Victorian variety.

April • 18" (45cm)  
£6.00 for 3

Heights in the catalogue relate to the average height of the plant when it begins to flower, often plants get taller after this. Open sunny situations tend to reduce flowering height, shade increases it.



NARCISSUS CHEERFULNESS



NARCISSUS FEBRUARY GOLD



NARCISSUS ICE WINGS



NARCISSUS BATH'S FLAME



NARCISSUS DERRINGER



NARCISSUS ELKA



NARCISSUS HAWERA

### BATH'S FLAME (3)

113-07

Pre 1913. A commonly grown form at the height of the Cornish cut flower trade, raised by Rev. Engleheart. Long strong stems, excellent for picking. Primrose yellow with an orange cup.

April • 20" (50cm)  
£5.50 for 3

### CHEERFULNESS (4)

113-60

Bunched together full of frothy ruffled pale cream coloured petals with pale orange centres, the flowers somehow resembling a strongly scented carnation, very often multi-headed and best in the sun.

April • 16" (40cm)  
£2.40 for 5 or £6.50 for 15

### DERRINGER (7)

113-76

A fragrant mid-season daffodil with creamy yellow petals which fade to white at their tips with a short deep orange yellow cup. Sturdy and upright.

March/April • 14" (35cm)  
£3.50 for 5 or £10.00 for 15

### ELKA (1)

113-61

A perfectly proportioned miniature with a long pale cream trumpet and milk white perianth. It was named by Alec Gray, a Cornish flower grower and daffodil hybridiser of the 1940s and 50s.

March/April • 6" (15cm)  
£3.50 for 5

### FEBRUARY

### GOLD (6)

113-09

Dating back to 1923. Early flowering, but only in late February in very mild years. A long lasting golden yellow garden favourite with slightly swept back petals and a good stature, also good for pots or tubs.

February/March • 12" (30cm)  
£4.00 for 10, £9.00 for 25 or £16.50 for 50

### HAWERA (5)

113-38

Multiheaded, with small clear lemon-yellow flowers with prominent cups and inconspicuous narrow foliage. It is much happier in a drier and sunnier site than many of its cousins and last winter's wet was not to their taste. Shorter and more wind tolerant. Pack them in quite tightly for a mass of colour on a rockery. A real favourite.

April • 10" (25cm)  
£5.50 for 10, £12.75 for 25  
or £25.00 for 50

### ICE WINGS (5)

113-58

A multi-headed form with beautiful, bowed, clear ivory-white flowers with a lovely scent. Lovely with the blues of Muscari at this time of year.

March/April • 12" (30cm)  
£4.50 for 5 or £8.50 for 10

## Love the Sun?

See our collection of Sun Lovers Bulbs on the Inside back cover



£24.00



NARCISSUS KEATS



NARCISSUS MARTINETTE



NARCISSUS MITE



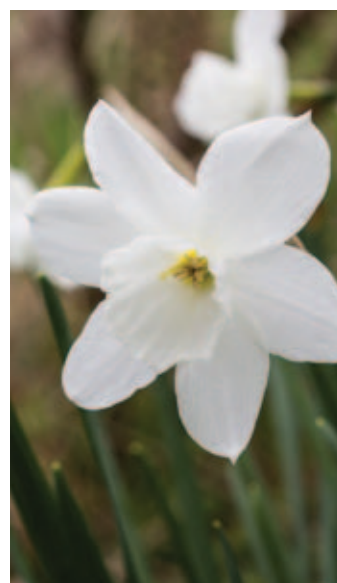
NARCISSUS LUCIFER



NARCISSUS MINNOW



NARCISSUS MOSCHATUM



NARCISSUS NIVETH

**KEATS (4) 113-93**

Well spaced and paddle like white outer petals seem to leave gaps which give this daffodil a different silhouette from many, the small cup seem to contain curling hooks which are unusual petaloid segments. A late flowering Alec Gray hybrid.

April • 15" (40cm)  
£6.50 for 3

**LUCIFER (2) 113-13**

Pre 1890. One of the great old daffodils raised in Ireland, the angelic outer petals milk white with a pale yellow centre highlighting the devilish orange rimmed cup.

April • 15" (40cm)  
£6.50 for 3

**MARTINETTE (8) 113-84**

Brightly yellow flowered with several flowers on each stem, the small cup more deeply orange coloured and they are enormously scented.

March • 14" (35cm)  
£3.00 for 5 or £8.30 for 15

**MINNOW (8) 113-51**

Multi-headed, with many small primrose yellow flowers, the small cup rather darker initially. One for more sunny conditions with better drained soils, but one I wouldn't be without.

March/April • 12" (30cm)  
£3.00 for 10 or £6.90 for 25

**MITE (6) 113-34**

This is a charming small daffodil with a long narrow trumpet and dainty proportions. The flowers are all deep yellow and it flaunts its cyclamineus parentage with sharply swept perianth segments flying from the relatively long trumpet.

March • 9" (25cm)  
£3.50 or £10.00 for 3

**MOSCHATUM (13) 113-94**

Palest creamy white with a head that always seems downcast – some describe it as swanlike? They seem to prefer damper soil in more shade than most, where they gleam naturally.

April • 12" (30cm)  
£5.00 for 3

**NIVETH (5) 113-85**

Glistening white with broad petals behind a flared trumpet, pleasantly scented and nicely proportioned, an old variety dating back to 1931, another winner from the Backhouse stable.

April • 12" (30cm)  
£3.50 for 5 or £6.00 for 10





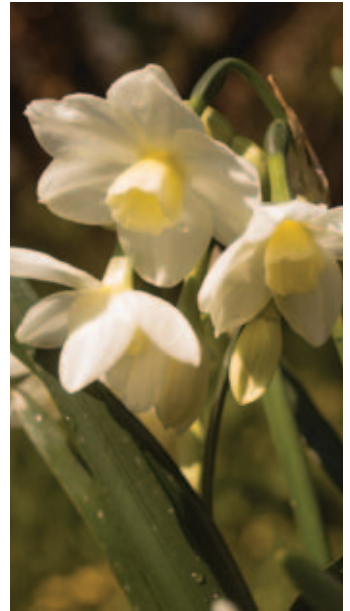
NARCISSUS OXFORD GOLD



NARCISSUS PIPIT



NARCISSUS SAILBOAT



NARCISSUS SILVER CHIMES



NARCISSUS RIJNVELD'S EARLY SENSATION



NARCISSUS SEGOVIA



NARCISSUS SNIPE

**OXFORD GOLD (10)** 🏆

113-92

A fab selected form of N. bulbocodium with large butter yellow blooms, quite early into flower and scented with large flowers. They will prefer a sunny well drained soil.

April • 6" (15cm)  
£2.50 for 3

**PIPIT (7)**

113-32

Multiheaded with quite sharp pale lemon coloured flowers initially these fade to a paler, creamier colour from the centre of the flower as it evolves to a two tone maturity – very pretty indeed. Tough enough to plant in rough grass.

April • 12" (30cm)  
£2.65 for 5 or £7.50 for 15

**RIJNVELD'S EARLY SENSATION (1)** 🏆 113-44

Yellow throughout with a shorter flared trumpet. So far not so unusual, but this variety's real star quality is that it really does flower in the garden around New Year. It is going over when the main season begins. A blast of spring in the middle of winter.

December/February • 10" (25cm)  
£4.60 for 5 or £12.60 for 15

**SAILBOAT (7)** 🏆 113-89

Pale and interesting with a pleasant perfume, it reminds me of N. Jenny which is very popular in the same colours but for which commercial stocks are not healthy.

March/April • 14" (35cm)  
£2.90 for 3

**SEGOVIA (3)** 🏆 113-87

A flattened pale lemon trumpet sits squarely against the bright white petals, the leaves are narrow and it would like a brighter spot in which to grow.

April • 6" (15cm)  
£3.20 for 5 or £8.50 for 9

**SILVER CHIMES (8)** 113-41

A lovely multi-headed tazetta form which prefers to be planted somewhere slightly warmer and in better drained soils. Broad leaved with pure white petals around a pale primrose scented cup. Big bulbs.

April • 12" (30cm)  
£3.90 for 5 or £11.00 for 15

**SNIPE (6)** 113-36

An early flowering dwarf cyclamineus hybrid with a long pale cream trumpet that fades to match the reflexed outer perianth, a handsome and well proportioned beauty (not to be confused with N. Jack Snipe).

February • 9" (25cm)  
£6.50 for 3



NARCISSUS SOPHIE'S CHOICE



NARCISSUS SWEETNESS



NARCISSUS TOPOLINO



NARCISSUS TETE-A-TETE

**SOPHIE'S CHOICE (4)** 113-78

This isn't the 'right' name, of that we are sure, but it has become attached to these and no-one has come up with a more suitable one with a more historical association. Most beautiful sulphur coloured narrow outer segments, the small cup varying from single to semi-double.

April • 15" (38cm)  
£4.50 for 3 or £6.00 for 5

**SWEETNESS (7)** 113-24

Sturdy, bright yellow and deliciously scented, with narrow foliage that does not get in the way, everything a simple daffodil ought to be!

March • 14" (35cm)  
£3.20 for 5 or £8.50 for 15

**TETE-A-TETE (12)** 113-16

Widely grown since it was raised soon after WW2, but a very good and adaptable variety for all that, initially very short when first in flower, extending in stem length as it matures, long lasting in cool conditions. Deep golden yellow and multi-headed.

February/March • 6" (15cm)  
£3.60 for 10, £8.10 for 25,  
or £15.50 for 50

**TOPOLINO (1)** 113-54

Immediately recognizable from its sturdy habit and grey-green foliage, this is a variety that predates the records of 1923 so it has stood the important test of time. Lemon yellow trumpet and creamy pale perianth on a short upright stem, it has poise, and looking quite like *N. pseudonarcissus*, it could be used in the same way.

March/April • 8" (20cm)  
£2.45 for 5 or £6.90 for 15



NARCISSUS THALIA



NARCISSUS TOTO



NARCISSUS WHITE LADY



NARCISSUS W. P. MILNER



NARCISSUS XIT

CREDIT: GAP IMAGE LIBRARY

**THALIA (5)** 113-42  
 Raised in 1916. A national treasure, refined and elegant, greeny-white, multi-flowered and scented. A well-known classy favourite.  
**March/April • 14" (35cm)**  
**£2.50 for 5, £6.80 for 15,**  
**or £12.75 for 30**

**TOTO (12)**  113-90  
 Gorgeously pale and simple flowered and early enough to overlap with the blue phase when the Muscari and Chionodoxa are at their best, the combination is wonderful.  
**March/ April • 12" (30cm)**  
**£3.70 for 3**

**W. P. MILNER (1)** 113-47  
 Pre 1869, attributed to Henry Backhouse' breeding in Yorkshire and evidently named after William Pashley Milner his brother in law. Pale yellow, with swept-forward petals, beyond which peeps the shy trumpet. Long lasting and good for naturalising being smaller in stature.  
**March/April • 9" (22cm)**  
**£3.70 for 5 or £10.00 for 15**

**WHITE LADY (3)** 113-65  
 Pre 1897. Another raised by Rev. Engleheart and famous as a cut flower variety pre WW2, now sadly rather more rare. White with a small yellow cup, sweetly scented, a step sister to Seagull.  
**April • 18" (45cm)**  
**£6.50 for 5**

**XIT (3)** 113-33  
**(PRONOUNCED ZIT!)**  
 A hybrid of N. wateri which originates from the Atlas mountains. Despite that we grow this in light grass in Somerset shade where it flourishes. The small, flared, greenish white cup encircled by the gorgeous white perianth.  
**April • 6" (15cm)**  
**£5.00 or £14.50 for 3**

## CALLING LONDON

Do you have space close to the Royal Hospital grounds to put up four visitors during the setup and through the duration of the Chelsea Flower Show? We are looking at alternatives to our current arrangements and wonder what quiet possibilities might be out there. We are happy to pay the going rate and can throw in some show tickets as a thank you to our hosts.



## NARCISSUS NATURALISING FORMS

WILD NARCISSUS PSEUDONARCISSUS ON THE BLACKDOWN HILLS.



NARCISSUS LOBULARIS (PSEUDONARCISSUS)



NARCISSUS OBVALLARIS



NARCISSUS POETICUS RECURVUS

### NARCISSUS – NATURALISING FORMS

*These would be the first choice of varieties to naturalise, to use to create a wild effect, where they might increase and multiply gently on their own. But they could equally well go into your borders, where they would need little attention.*

#### LOBULARIS (PSEUDONARCISSUS) (13) 113-31

A dwarf form entirely suitable for naturalising, grown from much smaller bulbs than many of the others, and needing time to establish. They rarely flower well in their first year. Best in cooler, moisture retentive soils, in part shade. White petalled with a darker trumpet. Happily seeding about in the right conditions.

March • 8" (20cm)  
£5.50 for 10 or £10.00 for 20

#### OBVALLARIS (13) 113-30

The daffodil that grows wild in South Wales is the Tenby daffodil, this looks just like it with a neat and tidy all yellow flower, yet this form doesn't set seed. Perfect for planting into rough grass to provide 'bomb-proof' daffodils.

March • 9" (22cm)  
£2.40 for 5, £6.50 for 15, or £12.00 for 30

#### POETICUS RECURVUS (13) 113-28

Wild in high alpine meadows in Europe and found in old gardens here. White flowers highlighted by a short flared, burgundy rimmed cup. The 'Pheasant's Eye' daffodil, one of the last to flower and deliciously fragrant too. Better in dappled shade in grass, or in a border amongst other plants.

May • 15" (35cm)  
£3.80 for 5, £10.25 for 15, or £19.70 for 30



ORNITHOGALUM MAGNUM



ORNITHOGALUM NUTANS



ORNITHOGALUM PYRENAICUM



ORNITHOGALUM UMBELLATUM



PARADISEA LUSITANICA

## ORNITHOGALUM

### ORNITHOGALUM

*The 'Star of Bethlehem' family. Silvery white and green flowered and generally tough and accommodating, many are perfect for naturalising.*

#### MAGNUM 117-16

Unusual and very spectacularly flowered with literally dozens of white flowers circling from the bottom up a stiff stem as they open. Easy in any sunny, drier site. They provide a great companion to some of the later flowering Alliums. I am experimenting with them in grass to follow Camassia.

June • 24" (60cm)  
£5.30 for 3

#### NUTANS 117-09

Very pretty soft silvery grey-green flowers, bluebell-like in stature, lasting when picked. They can be grown in light shade. The foliage naturally yellowing at flowering time. Preferring better-drained soils. Plant 3" (8 cm) apart, 10-15 per square foot.

May • 9" (22cm)  
£2.40 for 10, £5.40 for 25,  
or £10.00 for 50

#### PYRENAICUM 117-11

Tall, slim, waving wands of starry pale green flowers. A naturalised native in the area of Bath, and hence the 'Bath Asparagus'. Easy in well drained soil, planted 12" (30cm) apart.

June • 18" (45cm)  
£8.50 for 3

#### UMBELLATUM 117-13

A sun lover and excellent in thin grass. Ground hugging, and especially useful for carpeting a sunny bank with white in April with grey-green leaves flat to the soil. Plant about 4" (10cm) apart, 10 per square foot.

April/May • 4" (10cm)  
£4.20 for 10, or £9.50 for 25

### PARADISEA

#### LUSITANICA 140-04

This species occurs naturally in Northern Portugal and Spain in damp meadows. Dormant as thickened fleshy roots looking a bit like those of an Agapanthus. In flower as an elegant spire of bright white flowers providing impressive uprights in the herbaceous border, and a great accompaniment to the Alliums. Supplied as generous divisions, to be planted 4" (10cm) deep in moisture retentive soil in sun or part shade.

May/June • 36-48" (90-120cm)  
£7.50



## POLYGONATUM

POLYGONATUM ODORATUM FLORA PENA



POLYGONATUM BETBERG

### POLYGONATUM

The 'Soloman's Seal' family. These are hardy perennials that grow in most situations, preferring the more moisture retentive heavier soil types. They will mostly grow rather taller in the shade. Their only problem is their appeal to the Gooseberry Saw Fly caterpillar and an eye needs to be kept on them for quick action in May when they are active. There is now an 'organic' nematode spray for use against these caterpillars from Nemasys.

#### BETBERG 37-16

The name of a village in the Black Forest near Laufen where these were found. The stems and leaves are dark chocolate brown whilst they emerge and those contrast with the white flowers wonderfully well. Later in the season the brown turns more olive. Very desirable and quite slow to increase, but we release a few every year.

April/May • 24-30" (50-75cm)  
£15.00

#### X HYBRIDUM 37-04

A natural hybrid between P. multiflorum and P. odoratum. Graceful arching stems with pendant jade-green and ivory flowers. Increases slowly to form a thicket, taller in shade – a wonderful screen in dampish soil. And cut stems enhance any flower arrangement very well, and last.

May/June • 24-36" (60-90cm)  
£6.00 for 3 or £12.00 for 7

#### ODORATUM FLORE PLENA 37-12

The rare double flowered form, from a nice patch that we have taken years to build up, they deserve quick purchasing! They are slow growing but well worth it.

May • 18" (45cm)  
£6.50



POLYGONATUM X HYBRIDUM



## SCILLA

SCILLA LILIO-HYACINTHUS (SEE PAGE 8)



SCILLA PERUVIANA



SCILLA BIFOLIA



SCILLA SIBERICA



SCILLA MISCHTSCHENKOANA (TUBERGENIANA)

## SCILLA

The blue Scillas are part of that group of blue flowered plants such as Muscari and Chionodoxa that enhance and embellish the spring display created by the bigger bulbs. These are often not individually star performers, but they are the unmissable and necessary chorus, supporting the prima donnas, you shouldn't be without them. Their preferred situations do vary widely.

### BIFOLIA 125-05

An easy dwarf species with starry purple-blue flowers over waxy leaves. Naturalises under shrubs or in light grass in summer shade where the massed heads really create an early purple haze, flowering with the anemones and early daffodils. Small bulbs that you need to be generous with, plant them 2-3" (5-8 cm) apart, 15 per square foot.

Feb/Mar • 6" (15cm)  
£4.00 for 10, £9.00 for 25,  
or £17.00 for 50

### MISCHTSCHENKOANA (TUBERGENIANA) 125-17

The earliest pale-blue gem. Seemingly ignores winter cold and flowers at the same time as the Cyclamen coum and the winter aconites - far earlier than one might expect; very hardy, suitable for rockery or garden.

Feb • 4" (10cm)  
£4.30 for 10

### PERUVIANA 125-11

Suffering from an unfortunate confusion when they first arrived which led to their unlikely name (they first arrived in Bristol on a ship called The Peru, but are of Mediterranean in origin) the low broad, fleshy, near ever-green leaved plants produce a huge flower head of steely-blue flowers, especially dramatic in bud. Easy in good soil but they must be in full light and planted deeply. Either of these instructions being ignored can lead to lack of flowering – but they do flower better the spring following a warm summer.

May /June • 10" (25cm)  
£5.00 or £14.20 for 3

### SIBERICA 125-14

Bone hardy, these hail from the Black Sea area. The Prussian-blue flowers piercing through the cold ground ahead of their leaves, especially happy on sandy soils in summer shade.

Mar/Apr • 6" (15cm)  
£2.20 for 10 or £4.90 for 25



## TRITELEIA

TRITELEIA IXIOIDES STARLIGHT



TULIPA BAKERI LILAC WONDER



## TULIPS

TULIPA BATALINII BRONZE CHARM



TRITELEIA RUDY



TRITELEIA CORRINA

### TRITELEIA

Long lasting early summer flowering bulbs, also known in the past as *Brodiaea* but now more accurately *Triteleia*. They come from north-west America. So often we are told that they look like miniature *Agapanthus*, to which they are unconnected. Their papery flowers are a lasting pleasure, with up to 25 flowers per stem. Plant in well-drained soil – in good light, 4" (10cm) deep and 2" (5cm) apart.

#### CORRINA 68-06

A dark flowered form, creating a haze of deep blue when viewed from a distance. Wiry stemmed and a deep blue that anticipates the *Agapanthus* season to come.

June • 18" (45cm)  
£2.40 for 15 or £3.75 for 25

#### IXIOIDES STARLIGHT 68-05

Pale straw-coloured flowers mass over this amazing plant. For a long display any moderately drained site in the sun is suitable.

May/June • 12" (30cm)  
£3.00 for 5 or £8.00 for 15

#### RUDY 68-07

The same shape and stance as *T. Corrina* but white flowered with a broad violet blue stripe down the centre of each petal. Very eye-catching and 'different' with a long vase life for when your patch has really got going.

June • 18" (45cm)  
£4.00 for 5 or £10.00 for 15

### SPECIES TULIPS

The species types tend to have small bulbs, typically about the size of an almond. They are particularly grown for their bright bold colours in late April and early May and their comparative persistence when planted in suitable conditions (relative to the bigger hybrid forms). They are sun lovers and don't want it too wet, so good drainage, particularly in the summer when the bulbs are resting is a key requirement and where they are happy they will settle in and survive, increasing over the years. They are a possible attraction for mice and squirrels looking for the high levels of the carbohydrates that they contain, if that might be a problem there is mention under the *Crocus* heading of a way of keeping them protected and the same applies here. They should be planted quite close together. The quantity

in the first price break for each item would be suitable for a 5-6" (12cm) pot or an equivalent area of garden.

#### BAKERI LILAC WONDER 131-53

Silvery pink with a yellow eye in their centre, the flowers are held above the broad deep green and glossy leaves. A dependable sun loving selection of the species.

Late April/early May • 6" (15cm)  
£2.80 for 10 or £6.30 for 25

#### BATALINII BRONZE CHARM 131-08

The colour of ripe peaches, with more bronzing in warmer years. Pale grey green leaved. A really endearing small tulip with poise and character. Gravelly soils or a well-drained rockery would be perfect.

Late April/early May • 10" (25cm)  
£2.85 for 5 or £8.00 for 15





TULIPA BATALINII HONKY TONK



TULIPA LITTLE BEAUTY



TULIPA LITTLE PRINCESS



TULIPA CLUSIANA PEPPERMINTSTICK



TULIPA HUMILIS PERSIAN PEARL



TULIPA LINIFOLIA

**BATALINII  
HONKY TONK** 🍷 131-03

Flame shaped pale yellow petals above grey green foliage with wavy edges. The *T. batalinii* group are closely related to the red flowered *T. linifolia* types, and may be botanically indistinguishable.

Late April/early May • 10" (25cm)  
£2.50 for 5 or £7.00 for 15

**CLUSIANA  
PEPPERMINTSTICK** 131-02

The furled petals look like a stick of edible rock, opening strongly cerise pink on the back of the petals, the inside the flower ivory white has a dark eye.

April • 10" (25cm)  
£2.50 for 5 or £4.80 for 10

**HUMILIS PERSIAN  
PEARL** 131-12

The species *T. humilis* comes from Turkey and eastwards, all the family has low leaves nearly flat to the ground. They need full sunlight to stay compact. Deep magenta rose coloured flowers with silvery backed petals.

April • 4" (10cm)  
£4.25 for 10 or £10.00 for 25

**LINIFOLIA** 🍷 131-26

A tough low growing small tulip with red margins to the wavy edged leaves and with crimson red flowers suitable for any sunny well drained garden site.

May • 6" (15cm)  
£2.80 for 10, £6.50 for 25,  
£12.00 for 50

**LITTLE BEAUTY** 131-27

Shockingly bright crimson pink flowers which open wide in the sun to reveal white and blue centres. A bit of a startling surprise. For a sunny well drained site again.

April • 5" (12cm)  
£3.00 for 10 or £7.00 for 25

**LITTLE PRINCESS** 131-05

Fieri coppery orange coloured flowers, goblet shaped before opening fully in the sun, a really crackingly good dwarf tulip for a sunny spot.

April • 5" (12cm)  
£3.00 for 10 or £7.00 for 25

**Little  
Gems!**

See our collection of Ruby Tulips Bulbs on p62.



£19.50



TULIPA SYLVESTRIS



TULIPA EARLY HARVEST



TULIPA SHOWWINNER



TULIPA TARDA



TULIPA CAPE COD



TULIPA RED RIDING HOOD

**SYLVESTRIS** 131-37

Easy to grow, and possibly the only one that will tolerate some shade. We have some that have persisted and increased happily under an Amelanchier for 10 years or so, flowering intermittently as seems to be their nature, I am not sure why. The flowers are sulphur yellow and fragrant.

April • 12" (30cm)  
£3.00 for 5 or £8.50 for 15

**TARDA** 131-38

A perennial performer with many flowers produced from each bulb, all honey scented golden yellow flowers, edged in white. Pretty, shiny, fat bulbs to plant in a sunny site. Easy and persisting.

April • 5" (12cm)  
£2.50 for 10, £5.50 for 25,  
or £10.50 for 50

**KAUFMANNIANA  
TULIPS**

*(Group 12) Early flowering, typically February or March with large flowers on reasonably short stems. Very suitable planted on the rockery or in containers to greet your friends and the warm early sunshine. Plant them about 5" (12cm) apart as the flowers open widely in the sun. Possibly combine them with a suitably coloured Crocus vernus (Dutch crocus) these make a great flowering combination.*

**EARLY HARVEST**

Richly multi-coloured in red, orange and gold with yellow edges and large mottled leaves.

Mar/Apr • 9" (22cm)  
£5.75 for 10, £13.50 for 25  
or £25.00 for 50

**SHOWWINNER** 131-23

Pillar box red throughout with marked foliage too. Planted with Crocus Jeanne D'Arc (which flowers at the same time) it is a real stunner.

Mar/Apr • 7" (18cm)  
£5.25 for 10, £12.25 for 25  
or £23.00 for 50

**GREIGII TULIPS**

*(Group 14) Late March and Early April flowering with wonderfully marked leaves. These are equally great for planters, or could be used in the borders to give them an early 'lift'. They need a sunny and well drained site ideally planted about 4-5" (10-12cm) apart.*

**CAPE COD** 131-113

Bright yellow with broad red bands through the petals both without and within.

Mar/Apr • 9" (22cm)  
£5.25 for 10, £12.25 for 25  
or £23.00 for 50

**RED RIDING HOOD** 131-18

Glossy bright red flowers, the colour of newly painted pillar boxes, with attractively mottled leaves. Very suitable for containers. Lovely in April for that spring zing!

April • 8" (20cm)  
£5.25 for 10, £12.25 for 25  
or £23.00 for 50



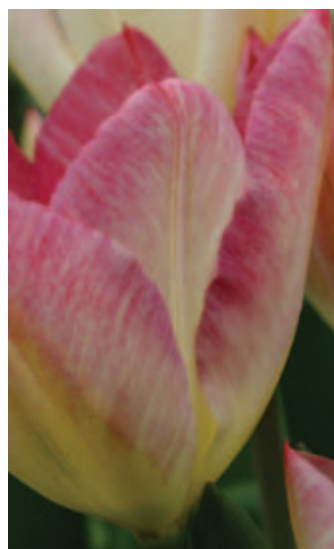
TULIPA EXOTIC EMPEROR



TULIPA PURISSIMA



TULIPA ORANGE EMPEROR



TULIPA FLAMING PURISSIMA



TULIPA JUAN

## FOSTERIANA

*(Group 13) Earlier flowering than the main Tulip display, large flowered on sturdy stems and available in lovely pastel colours. They need planting about 5" (12cm) apart and are equally suitable for containers or borders.*

## EXOTIC EMPEROR 131-100

In flower somewhat rose-like with the double petalled white flowers clasped by intriguing green bracts. Where we have seen it in gardens it has persisted for years on thin stoney soil.

April • 18" (45cm)  
£5.75 for 10, £13.50 for 25  
or £25.00 for 50

## FLAMING PURISSIMA 131-71

Creamy-white initially, but becoming increasingly pink as the flower ages, feathering gracefully towards the edges of the petals, stronger red within the flower. Very pretty indeed.

Mar/Apr • 14" (35cm)  
£5.50 for 10, £12.75 for 25  
or £24.00 for 50

## JUAN 131-124

I was taken by these tulips when visiting Harlow Carr where a huge tub of them was being admired by all that passed by. Bigger flowered and even more vibrant than Orange Emperor with yellow to the base of the otherwise orange flower.

Mar/Apr • 14" (35cm)  
£5.50 for 10, £12.75 for 25  
or £24.00 for 50

## ORANGE EMPEROR 131-72

Long petalled flowers in pale orange with green at the base, good for bold contrast and a great combination planted with Purissima below. Follow them with Ballerina to continue the orange theme.

Mar/Apr • 16" (40cm)  
£5.00 for 10, £11.25 for 25  
or £21.00 for 50

## PURISSIMA 131-16

Opening a pale primrose yellow, they turn through creamy shades to pure white and opening in late March sunshine revealing dramatic mascara black anthers. Strong stemmed over bright green leaves,

Mar/Apr • 18" (45cm)  
£5.25 for 10, £12.25 for 25  
or £23.00 for 50

(CREDIT: GAP IMAGE LIBRARY)



## MID SEASON TULIPS

TULIPA ABU HASSAN



TULIPA APRICOT BEAUTY



TULIPA BLUE RIBBON



TULIPA ATTILA

## MID SEASON TULIPS

*These Triumph (Group 3) and Darwin (Group 4) tulips all have roughly the same flowering season - we used to say mid to late April and early May, but in our fickle climate this is just a guide, some years they are early and others later. These would be planted about 5" apart. Very suited to the open garden in borders, or in containers. Some suggested tulip combinations that look good together are offered under each entry.*

### ABU HASSAN 131-61

Rich terracotta red flowers on sturdy stems, each edged in gold. It really has an earthy Eastern feel to it. The russet and yellow of wallflowers in particular combine with the colours perfectly.

April • 18" (45cm)  
£5.25 for 10, £12.25 for 25,  
or £23.00 for 50

☛ With Gavota, West Point or Jan Reus

### APRICOT BEAUTY ☛ 131-125

Pale apricot pink with a fine edge that is more orange and scented. One of the earliest of the taller tulips.

April • 18" (45cm)  
£7.00 for 10, £16.50 for 25,  
or £31.00 for 50

☛ Light and Dreamy as they are both early flowering.

### ATTILA 131-41

Like the colours of a ripening plum, slightly subdued till they reach a juicy reddish-purple ripeness, rich and tidy with strong stems. A 'clean' simple tulip in shape and colour.

April • 18" (45cm)  
£5.00 for 10, £11.25 for 25,  
or £21.00 for 50

☛ Rem's Favourite, Shirley or other purples and whites

### BLUE RIBBON 131-67

Deep raspberry, but with a lilac tinge; bold, vibrant, broad shouldered tulips with good substance.

April • 18" (45cm)  
£5.50 for 10, £12.75 for 25,  
or £24.00 for 50

☛ Tres Chic or Ballade

### CALGARY ☛ 131-48

Very short and compact with white flowers that are brilliant in exposed conditions, shrugging off any wind and rain.

April • 9" (22cm)  
£5.50 for 10, £12.75 for 25,  
or £24.00 for 50

☛ Princess Irene, Evening Breeze or purple hyacinths



TULIPA CALGARY



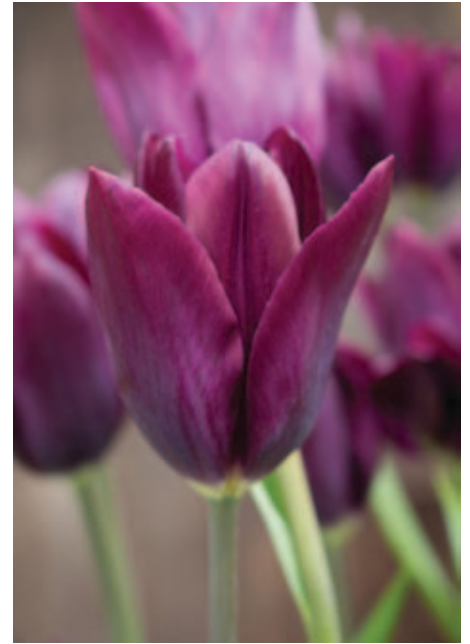
Suggested planting companions



TULIPA COULEUR CARDINAL



TULIPA GAVOTA



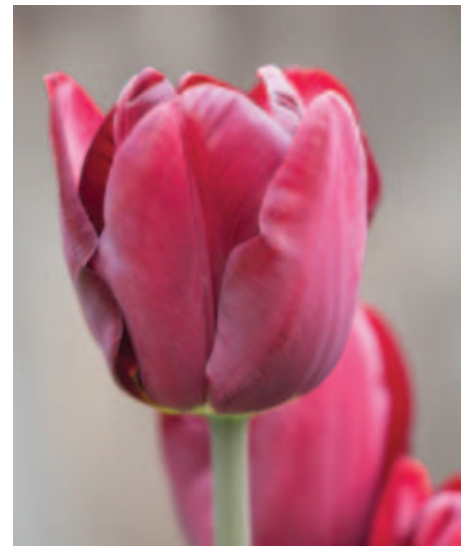
TULIPA HAVRAN



TULIPA EVENING BREEZE



TULIPA GRAND PERFECTION



TULIPA JAN REUS

**COULEUR CARDINAL** 131-126

Richly red in colour with a darker more plum coloured marking on the outer petals, famously scented and long lasting, first named in 1845.

April 14" (35cm)  
**£5.50 for 10, £12.75 for 25 or £24.00 for 50**

👉 Paul Scherer, Evening Breeze or Shirley.

**EVENING BREEZE** 131-118

Just perfect for planters where you might need a shorter tulip. Pretty, upright and weather proof.

April 9" (22cm)  
**£5.75 for 10, £13.50 for 25 or £25.00 for 50**

👉 Calgary, Unique de France or white Hyacinths



Suggested planting companions

**GAVOTA** 131-29

Flowers deep fire brick red, quite pointed in bud, opening to show a broad deep yellow inner edge to the petal, lovely with wallflowers or against old brickwork.

April 15" (40cm)  
**£5.00 for 10, £11.25 for 25 or £21.00 for 50**

👉 Tres Chic, Ballerina and Abu Hassan

**GRAND PERFECTION** 131-123

Rather like the tulips illustrated in the paintings by the Dutch Masters at the height of the Tulip mania these have broad flashes of red over what is initially quite a creamy yellow background, but this turns white for a stronger contrast.

April 18" (45cm)  
**£5.50 for 10, £12.75 for 25 or £24.00 for 50**

👉 Elegant Lady, Angels Wish or Sanne

**HAVRAN** 131-57

With a grape like bloom on the deep plum purple petals this is a good dark tulip which will be in flower well before Queen of the Night (which could follow it to continue your dark theme?).

April 18" (45cm)  
**£5.25 for 10, £12.25 for 25 or £23.00 for 50**

👉 Rem's Favourite, Pink Diamond and Daytona

**JAN REUS** 131-62

Deep purple with petals that shimmer in the sun atop a dark strong stem that adds to the impact. They combine with just about everything, especially the acid green foliage of emerging Euphorbia maybe.

April 18" (45cm)  
**£5.25 for 10, £12.25 for 25 or £23.00 for 50**

👉 China Pink, Abu Hassan or nearly everything else



**Planning ahead?**

See our collection of Late Season Tulip Bulbs on p62



**£19.50**



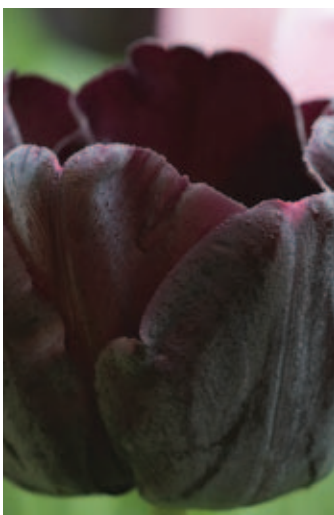
TULIPA LIGHT AND DREAMY



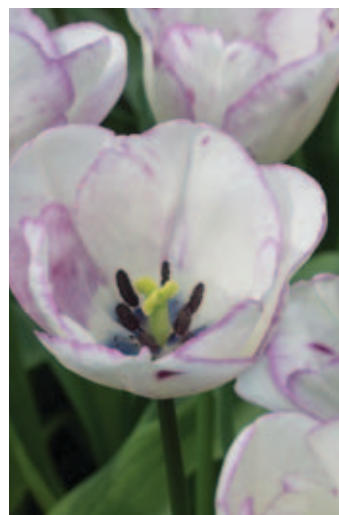
TULIPA PRINCESS IRENE



TULIPA REM'S FAVOURITE



TULIPA PAUL SCHERER



TULIPA SHIRLEY



TULIPA WHISPERING DREAM



TULIPA UNIQUE DE FRANCE

### LIGHT AND DREAMY

131-119

Pretty in pink, the pink with a hint of blue. Easy to combine with nearly anything and brilliant with the last of the blue Muscari or Scillas as a backdrop.

Early April • 16" (40cm)  
£7.00 for 10, £16.50 for 25  
or £31.00 for 50

👉 *Apricot Beauty or Purissima*

### PAUL SCHERER

131-107

Strong stemmed, with slightly grey green foliage contrasting with the exceptionally dark flowers. Registered in 2000, a rival for the Queen of the Night

April • 18" (45cm)  
£5.25 for 10, £12.25 for 25  
or £23.00 for 50

👉 *Daytona, Shirley or Pink Diamond*

### PRINCESS IRENE

131-10

A surprising mix of earthy marmalade and purples, but unlikely as it seems they work brilliantly together. Add in a huge scent and the combination is always very popular. Always short stemmed.

April • 15" (38cm)  
£5.50 for 10, £12.75 for 25  
or £24.00 for 50

👉 *Probably best alone, great with acid green foliage*

### SHIRLEY

131-56

Great fun and ever-changing. Pale creamy white throughout to begin with, then with a purple margin to each petal and gradually darkening till suffused purple all over.

April/May • 24" (60cm)  
£5.25 for 10, £12.25 for 25,  
or £23.00 for 50

👉 *Whites, purples and especially Cummins.*

### REM'S FAVOURITE

131-84

White with raspberry streaks, absolutely perfect in combination with the pink and white apple blossom that is out at the same time. A few of these tulips go a long way.

April • 18" (45cm)  
£7.00 for 10, £16.50 for 25,  
or £31.00 for 50

👉 *Any white or purple tulips*

### WHISPERING DREAM

131-132

On our stands at Malvern and Chelsea where we had it labelled Tender Whisper, but we have been corrected since! What is initially quite subtle pink edging to a creamy petal diffuses steadily till the top is all pink above a creamy white base, it was greatly admired.

April • 16" (40cm)  
£5.75 for 10, £13.50 for 25  
or £25.00 for 50

👉 *Sanne worked well at Chelsea, Tres Chic or Pink Diamond*

### UNIQUE DE FRANCE

131-121

Scarlet red flowered, one of the deepest coloured tulips but the most striking difference lies in the leaves, they are bright green and very waxy, quite different from any other tulip foliage and great with the flowers. Good for the garden or containers.

April 16" (40cm)  
£5.25 for 10, £12.25 for 25,  
or £23.00 for 50

👉 *Outstanding on it's own.*



Suggested planting companions



## MID-LATE TULIPS



TULIPA ROCOCO

TULIPA FLAMING PARROT



TULIPA BLACK PARROT



TULIPA WHITE PARROT

### PARROT TULIPS

*(Group 10) Exuberance is the greatest strength within this group, with flowers that seem to be overflowing with frilled or fluted petals. Dramatic, whether in the pantomime sense or as a dark thespian tragedy, there is one for any mood you wish to evoke. Wonderful for a fantastical flower arrangement. Big and heavy headed, best in good light and in some breeze which will shake the rain from the multitudinous petals.*

#### BLACK PARROT 131-17

In bud seemingly grasped in a green fingered grip the chocolate purple petals seem to erupt in a cockscomb of frilled excess, a dark favourite indeed.

April/May • 20" (50cm)  
£7.00 for 10, £16.50 for 25  
or £31.00 for 50

👇 With oranges, pinks or white, and Spring Green

#### FLAMING PARROT 131-75

Clear, ruffled, bright golden yellow with a prominent red stripes marking the centre of each petal, the whole effect is very exuberant. How does a plant produce such colours?

April/May • 20" (50cm)  
£7.50 for 10, £17.50 for 25,  
or £33.00 for 50

👇 Alone or with any other yellows perhaps?

#### ROCOCO 131-127

Earlier than most other Parrot tulips with shorter stems, these are velvety red and crimped, very suitable for pots.

April • 15" (38cm)  
£5.50 for 10, £12.75 for 25  
or £24.00 for 50

👇 West Point or White Parrot for effect

#### WHITE PARROT 131-64

Large flowered, the whole head bursting full of crimped petals, like clouds of egg white about to become meringue, the outermost ones with a tinge of creamy green.

April/May • 18" (45cm)  
£7.00 for 10, £16.50 for 25,  
or £31.00 for 50

👇 Great with pretty much everything!



Suggested planting companions



TULIPA MAUREEN



TULIPA ANGEL'S WISH



TULIPA RECREADO



TULIPA BLEU AIMABLE



TULIPA PINK DIAMOND

## SINGLE LATE

(Group 5) These have simple elegant cup or goblet shaped flowers and longer stems.

### ANGEL'S WISH 131-32

White with a dash of cream, simple and broad petalled, a great foil for some of the stronger colours.

April/May • 20" (50cm)  
£5.50 for 10, £12.75 for 25  
or £24.00 for 50

 With Redshine, Shirley or Bulldog

### BLEU AIMABLE 131-34

This tulip has provenance. Raised in 1916 it was part of the new wave of tulips bred by Krelage. Smaller headed but robust and long flowering in a deep lavender mauve.


April/May • 20" (50cm)  
£7.50 for 10, £17.50 for 25,  
or £33.00 for 50

 Shirley, Ballade or China Pink

### MAUREEN 131-128

Late flowering with single egg shaped flowers atop tall stems, the flowers fading gently from creamy white to a more ivory hue.


April/May • 24" (60cm)  
£7.50 for 10, £17.50 for 25,  
or £33.00 for 50

 Merlot is nearly as tall and they will flower together

### PINK DIAMOND 131-91

Pale pink, with quite rounded flowers. Simple, quite short and very pretty.

April • 15" (38cm)  
£5.25 for 10, £12.25 for 25,  
or £23.00 for 50

 Recreado, Havran or White Triumphator

### RECREADO 131-83

Simply bold and dramatic, with a deep purple wine coloured flower over a strong stem with greyish leaves.

April • 18" (45cm)  
£5.50 for 10, £12.75 for 25,  
or £24.00 for 50

 Wonderful with pretty much anything

### QUEEN OF THE NIGHT 131-58

The darkest delight, and justifiably one of our best sellers. Though not quite black, certainly as dark as any other tulip, the hue deepest in direct sunlight.

April/May • 24" (60cm)  
£5.50 for 10, £12.75 for 25,  
or £24.00 for 50

 Oranges, purples, pinks and greens



(CREDIT: GAP IMAGE LIBRARY)



## LILY FLOWERED TULIPS

TULIPA MERLOT



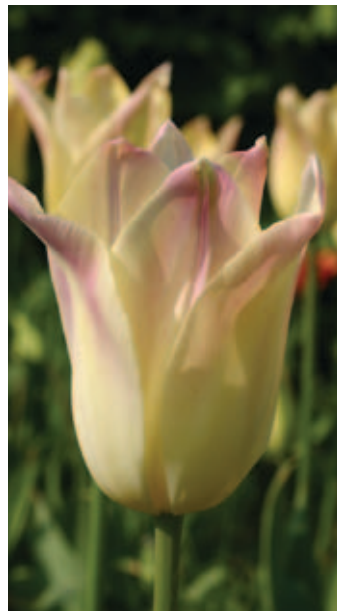
TULIPA BALLADE



TULIPA BALLERINA



TULIPA CHINA PINK



TULIPA ELEGANT LADY



TULIPA BURGUNDY WITH BALLERINA



TULIPA REDSHINE

### LILY FLOWERED TULIPS

*(Group 6) Most of these have long stems and that refined 'hour glass' shape, waisted in bud and opening up in the sun with pointed tips. They are great in flower borders, and in tall containers which seem to exaggerate the stem length.*

#### BALLADE 131-81

A clear white hem edges and enhances the shape of the sinuously dusky ruby-coloured petals, exaggerating their vase-like silhouette. Opening wide when it warms up.

April/May • 18" (45cm)  
£5.25 for 10, £12.25 for 25,  
or £23.00 for 50

 Purples, pinks and whites

#### BALLERINA 131-65

Soft tangerine coloured flowers, one of my favourites, particularly because it is so scented in the sun. The colour, combines perfectly with all the leafy greens, altogether very eye-catching with a heady perfume.

April/May • 20" (50cm)  
£5.25 for 10, £12.25 for 25,  
or £23.00 for 50

 Purples, purple-blacks and pale yellow

#### BURGUNDY 131-96

Elegantly poised in a purplish hue of deep lilac, this variety has a more waisted shape with more pointed petals than some in the group.

April/May • 18" (45cm)  
£7.00 for 10, £16.50 for 25,  
or £31.00 for 50

 Obviously Ballerina, Rem's Favourite or Queen of the Night

#### CHINA PINK 131-59

A favourite amongst this group, deep pink flowers over a much leafier plant. Earlier to flower and not quite as tall as its cousins.

April • 14-16" (35-40cm)  
£5.75 for 10, £13.50 for 25,  
or £25.00 for 50

 Angelique, Pink Diamond or Queen of the Night

#### ELEGANT LADY 131-78

Displaying a sort of porcelain femininity the muted colours blend together seamlessly. Pale ivory yellow with pale pink edging. Cool and refined, one to choose for a more subtle display.

April/May • 24" (60cm)  
£5.50 for 10, £12.75 for 25,  
or £24.00 for 50

 China Pink, West Point and Greenland

#### MERLOT 131-130

Very tall, but the colour is a tremendously attractive glistening wine colour.

April/May • 28" (65cm)  
£7.00 for 10, £16.50 for 25,  
or £31.00 for 50

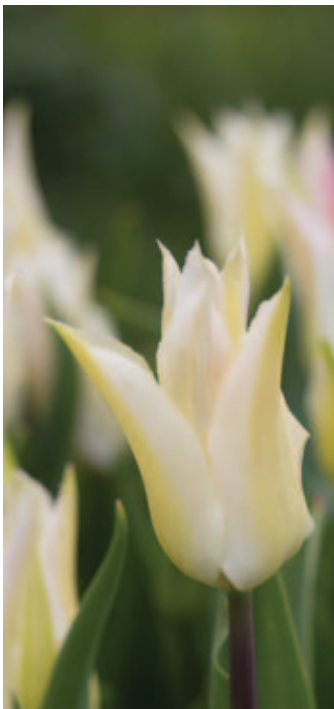
 Maureen should contrast perfectly

#### RED SHINE 131-47

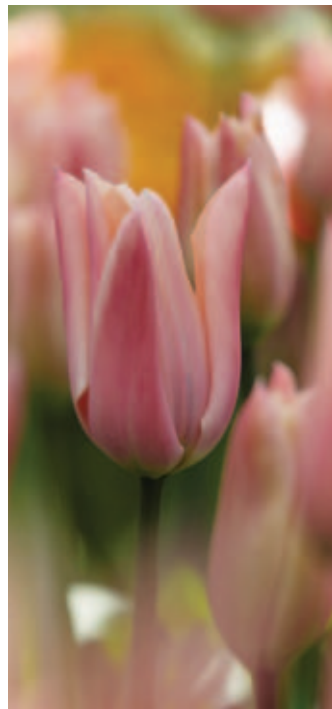
Glistening deep vermilion red, almost opalescent as a ruby tiffany lamp, not one for the faint hearted but then these are showy tulips doing what they do best!

April/May • 18" (45cm)  
£5.25 for 10, £12.25 for 25,  
or £23.00 for 50

 Spring Green, Très Chic or White Triumphant



TULIPA TRÉS CHIC



TULIPA SANNE



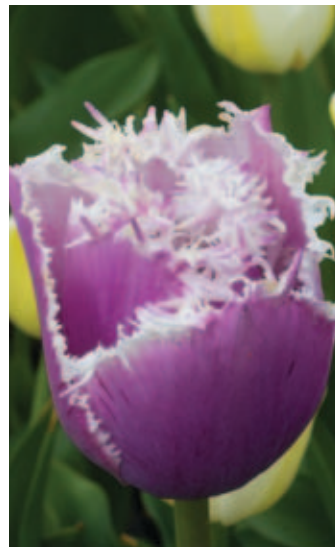
TULIPA BULLDOG



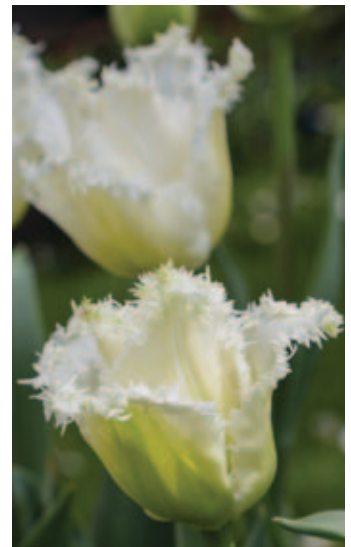
TULIPA WEST POINT



TULIPA WHITE TRIUMPHATOR



TULIPA CUMMINS



TULIPA DAYTONA

**SANNE** 131-122

More pale apricot pink than yellow, with the tips slightly paler, soft and feminine with a good poise. The colour would be perfect for a terracotta planter?

April/May • 18" (45cm)  
**£5.75 for 10, £13.00 for 25,  
 or £25.00 for 50**

👉 *Elegant Lady or White Triumphator*

**TRÉS CHIC** 131-66

Creamy white, fading to white, with very pointed petals on short stems which should be more weather resilient, a tulip that lives up to its name.

April/May • 12" (30cm)  
**£5.50 for 10, £12.75 for 25,  
 or £24.00 for 50**

👉 *Any of the coloured tulips with a different silhouette*

**WEST POINT** 131-45

Deep yellow, with pointed tapering petals that open up more readily than many others in the same group.

April/May • 18" (45cm)  
**£5.50 for 10, £12.75 for 25,  
 or £24.00 for 50**

👉 *Elegant Lady, Greenland or Redshine*

**WHITE TRIUMPHATOR** 🏆 131-46

A superb and perennial favourite, useful in so many ways – for dramatic contrast, for peaceful separation of more noisy colours - or just for itself, simple and serene, but not so typically lily flowered in its shape.

April/May • 20" (50cm)  
**£5.75 for 10, £13.50 for 25,  
 or £25.00 for 50**

👉 *Safe as houses, goes with everything!*

**FRINGED TULIPS**

*(Group 7) First popular in the florist shops these are fringed by frills along the edges of the petals, they are not just frivolous though, they provide a contemporary twist.*

**BULLDOG**

131-101

Strong stemmed and darkly purple except at the base of the flower which is paler, the fringed edge similarly dark

April/May 18" (45cm)  
**£7.00 for 10, £16.50 for 25,  
 or £31.00 for 50**

👉 *Daytona, China Pink or White Parrot*



*Suggested planting companions*

**CUMMINS** 131-88

Lilac-purple with a wide fringe of seemingly frosted white frills around each petal. Thick, lustrous and –tasting flowers with style and class– Long lasting blooms. Good for cut flower.

April/May • 15" (38cm)  
**£7.50 for 10, £17.50 for 25,  
 or £33.00 for 50**

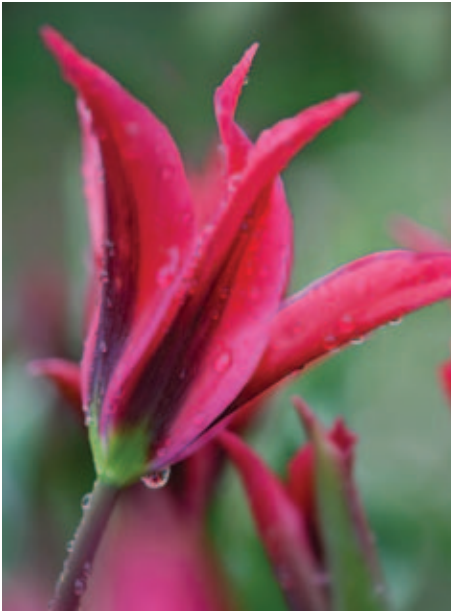
👉 *Shirley, Bleu Aimable or Havran*

**DAYTONA** 131-95

Creamy white, and sometimes tinged with green but edged in a sparkling frosted fringe. A cracking tulip that looks as though it has just been drawn from the ice bucket, one of the most popular at Chelsea where it helps in our 'colour control'.

April/May • 15" (38cm)  
**£5.50 for 10, £12.75 for 25,  
 or £24.00 for 50**

👉 *Cummins, Red Shine or anything else!*



TULIPA DOLLS MINUET



TULIPA FLAMING SPRING GREEN



TULIPA ANGELIQUE



TULIPA GREENLAND



TULIPA SPRING GREEN



TULIPA BLACK HERO

## VIRIDIFLORA TULIPS

*(Group 8) Multi-coloured with vertical colour banding, some of these exhibit complicated colour patterning, like an artist's mixing palette. In the borders they provide great opportunities to create subtle combinations.*

### DOLL'S MINUET 131-131

Pinky magenta coloured with streaks of green and tall stemmed, a slightly over exuberant but fun.

**April/May • 26" (60cm)  
£5.25 for 10, £12.25 for 25,  
or £23.00 for 50**

👉 *Maureen might tame it, Merlot would be interesting*



Suggested planting companions

### FLAMING SPRING GREEN 131-97

Spring Green (as described below) with the addition of deep red staining from the base, these will certainly get noticed.

**April/May • 18" (45cm)  
£7.50 for 10, £17.50 for 25,  
or £33.00 for 50**

👉 *Spring Green, Greenland and Redshine*

### GREENLAND 131-44

A subtle combination with pink and green coloured flowers shot with cream, the effect is calming and unfussy and the colours are easy to mix with any pink or green coloured combinations.

**April/May • 18" (45cm)  
£5.25 for 10, £12.25 for 25,  
or £23.00 for 50**

👉 *West Point, Flaming Spring Green or Elegant Lady*

### SPRING GREEN 🏆 131-51

Pale apple white petals marked with a wispy green brush stroke on their backs of each petal. Ideal for separating strong colours in the border or for flower arranging. One of the all-time favourites.

**April/May • 18" (45cm)  
£5.75 for 10, £13.50 for 25,  
or £25.00 for 50**

👉 *With everything, and they all look better for it!*

## DOUBLE PETALLED TULIPS

*(Group 11) Also known as the Paeony flowered forms. These tend to be late flowering with rounded flower shapes, filled with deep layers of petals.*

### ANGELIQUE 🏆 131-24

Often multi-headed, the heads filled with ruffled petals in delicate pink shades, genuinely paeony-like from a distance, somewhat shorter in stature than most. Late flowering beauties for borders as well as cut flower.

**April/May • 16" (40cm)  
£5.50 for 10, £12.75 for 25,  
or £24.00 for 50**

👉 *China Pink or Mount Tacoma*

### BLACK HERO 131-80

Tall, dark and clean stemmed with smaller, tight shiny petalled heads in deep chocolate purple.

**April/May • 26" (65cm)  
£7.50 for 10, £17.50 for 25,  
or £33.00 for 50**

👉 *Spring Green, Ballerina or Flaming Spring Green*



TULIPA BLUE DIAMOND



TULIPA MOUNT TACOMA



UVULARIA GRANDIFLORA



TULIPA LA BELLE EPOQUE



TULIPA UNCLE TOM



UVULARIA GRANDIFLORA PALLIDA

**BLUE DIAMOND 131-79**

Big sumptuous rounded bowl shaped flowers in a rich ruby colour. A blue blooded colour that goes with anything, but also looks great alone.

April/May • 24" (60cm)  
**£5.25 for 10, £12.25 for 25,  
 or £23.00 for 50**

👉 *Greenland, Ballade, West Point or Shirley*

**LA BELLE EPOQUE 131-104**

Pinkish, or even tea rose coloured, turning more apricot as the flowers develop, a more subtle colour that goes well with the pinks and lilacs that are often prevalent in tulips.

April/May • 18" (45cm)  
**£7.50 for 10, £17.50 for 25,  
 or £33.00 for 50**

👉 *Blue Diamond, Ballade or Cummins*

**MOUNT TACOMA 131-60**

All white, with a hint of green on the backs of the petals. Use it on its own, or in combinations with other late tulips to offset their individual loudness.

April/May • 16" (40cm)  
**£5.50 for 10, £12.75 for 25,  
 or £24.00 for 50**

👉 *Black Parrot, Angelique, China Pink and many others*

**UNCLE TOM 131-106**

Dark red, late flowering gems that are neither too big, nor too tall. A fitting finale to the Tulip season?

April/May • 18" (45cm)  
**£5.75 for 10, £13.50 for 25,  
 or £25.00 for 50**

👉 *Red Shine, Mount Tacoma or Blue Diamond.*

**UVULARIA**

*Bombproof but quite slow growing woodland plants of N. America needing cool leaf-mould rich soils in part shade. Quite slow growing but established clumps are quietly impressive, but easy to achieve in time in the right conditions, brilliant with other choice shade plants like Trilliums, Sanguinaria and Erythronium.*

**GRANDIFLORA 133-05**

Known as the Merrybells in the eastern USA. Deep yellow flowers hanging from arching stems. Soft foliaged and completely resistant to our coldest weather.

Apr • 12" (30cm)  
**£5.00**

**GRANDIFLORA PALLIDA 133-06**

A paler form which growing here seems also a bit shorter and earlier. The books do not differentiate them, but this is certainly a different clone from that above. Recherche and choice.

April • 10" (25cm)  
**£5.00**



Suggested planting companions

## ORDERING FROM AVON BULBS

This catalogue covers the period May 2015 to December 2015. It costs £2. Prices are given at the end of each plant description; prices are for a single bulb or plant unless stated otherwise.

### PLEASE LIST ACCEPTABLE ALTERNATIVES

All plants and bulbs are offered subject to availability. Stocks we anticipate being saleable as we write the catalogue in April sometimes fail before their due despatch season in Sept - Nov, but that's gardening. We do not make substitutions, but a list of alternative bulbs that might be acceptable helps greatly.

### PAYMENT

Please order by post and send your payment with your order with cheques made out to Avon Bulbs Ltd. "Not To Exceed" (NTE) cheques are a convenient and safe way to allow for slight variations in your order — particularly useful for late orders where availability is less certain, after 1 September. Make the cheque out as usual and sign it but do not date it or complete the value in words or in figures. At the top of the cheque write "Not to exceed £X", where X is a round number of pounds that is likely to be enough. Once your order has been sent, we complete the date and amounts to match the amount invoiced (and supplied), bank the cheque and your account is settled. Completed cheques (ie not NTE cheques) are banked as orders are accepted.

### PAYING BY CARD: POINTS TO NOTE

We normally debit your account when bulbs are despatched, not when your order is received, so do try to ensure that your card does not expire before the date when we will need to draw from the account.

### PLEASE ALLOW FOR P&P

The contribution towards packing and delivery is £4.95 per order (mainland UK). It is likely that for larger orders this will be exceeded by the costs to ourselves. You will however receive an acknowledgment, individual planting instructions for all items, a strong box and further catalogues from us whilst you continue to order. For customers with addresses outside the UK mainland (Channel Isles, Northern Ireland, Isles of Wight, Man, Shetlands etc.) we will probably need to add a surcharge dependant on the weight of the parcel and your location, this sometimes takes the cost of a parcel (or two if we split the delivery) to about £15.00.

### PLEASE RETAIN OUR ACKNOWLEDGEMENT

We acknowledge all orders by post or email unless the order is to be despatched immediately. If you need to contact us about your order, please use this invoice reference number.

### DELIVERY MAY BE WEATHER AFFECTED

We despatch 'Autumn' orders through from mid September to early November dependant on the prevailing conditions, the 'Late Summer' orders between late August and mid September.

### DELIVERY CAN BE TAILORED TO YOUR NEEDS

We use the Post Office (Royal Mail) for smaller parcels, Interlink Express for larger parcels. Both organisations now allow us to specify Safe Place Leaving Instructions and if these are provided no signature on delivery is required, the delivery will be made following those instructions. If you do not specify a Safe Place you will have to sign for the parcel or arrange a redelivery on receipt of their card. If you might be away during our delivery season, please tell us – we can fit around most dates.

Providing us with your email address means that you will receive an email from us confirming despatch of your parcel, and a further email from Interlink Express (if your parcel is bigger) confirming the expected delivery date and time slot of one hour. The Royal Mail service used can also be tracked on the internet.

If you wish to collect your order please either advise us of the intended date or allow us to suggest one.

### PLEASE RAISE PROBLEMS IMMEDIATELY

While we try to ensure everything is correctly named and labelled, errors do occur occasionally. If we seem to have made a mistake please tell us as soon as possible; late complaints are very difficult to deal with in the same reason if stocks are limited. Regrettably, the bulbs we sell cannot be absolutely guaranteed to flower and thrive, nature is fickle sometimes and we cannot be responsible for its vagaries, or even poor gardening.

Data Protection Act: We do keep computerised records with your name and address details for our own and the parcel carrier's use only.

Overseas customers are requested to check the website for details of the costs of shipping to the European Union and Switzerland. The minimum postal cost for non UK orders is £10.00.

## Five year Diaries!

Our ever popular Five Year Diary has been reprinted and now has a wipe clean colour cover to keep it looking smart. Each month has a title page with a beautiful line drawing by Susan Ogilvy of one of our flowering subjects, a page of gardening jobs for the month and a list of flowers that might be in bloom in one's garden at that time.

The book is spiral bound with a page for each day of the month, divided into five (a section for each of your entries for five years) so reviewing past years' notes couldn't be simpler. Growing and weather conditions, when plants flowered, what you gave them for dinner, what the grandchildren told you today ...the list is endless!

Its dimensions are 6" (15.2cm) wide by 9.25" (23.5cm) high and it weighs 770g.

Diaries can be ordered at any time for immediate despatch but as most diaries are started at the New Year (these need not be) it may be easier to include one on an order with your bulbs in the autumn.

**They cost £15.00 incl. P&P (within UK)  
Additional P&P to European destination is £6.00**



# Seeds from Avon Bulbs

We have a seed box which travels to the shows and from which customers can pick out seed packets that they might like to purchase. The range is small and generally reflects the plants that we have grown and are showing to associate well with the bulbs on the display (but the annuals flower from seed very much more quickly than bulbs) particularly at the Chelsea Flower Show where so many visitors from abroad want something to take home and try for themselves.

But many of our mail order customers do not see us at the shows and may like the chance to buy a packet or two? Availability may be limited depending on the demand at the shows!

Any packet  
of seeds  
**£2.50**



T77-001

Average seed contents: 80

**Ammi visnaga  
'Mystique'**

Hardy Annual. Large domed umbels of green and white flowers supported by fine feathery green foliage in the summer about 2-3' tall (60-90 cm), very good cut flower (strip most of the leaves off as these turn yellow in a vase) and a very good foil for colourful summer flowering dahlias in sunny but moist soil. Sow the very small seed thinly in either early autumn (August-September) or in the spring (March-April) directly into well drained soil in a sunny position.



T77-002

Average seed contents: 15

**Anthriscus sylvestris  
'Ravenswing'  
(Black Cow Parsley)**

Perfect for a wild garden or meadow. An elegant, clump-forming biennial or short lived perennial with finely divided ferny foliage of darkest mahogany-bronze and umbels of white flowers in late spring and early summer. Plant in well drained soil, in sun or partial shade. Height 80cm, spread 50cm. Sow in trays in May-June or Sept-Feb. Sow finely and evenly. Cover thinly with compost or grit and position in good light outside. Transplant individual seedlings when large enough to handle, into 3in pots. Select seedlings with dark, purple brown foliage, occasionally a plain green seedling may appear. Will self-seed freely unless you remove spent flower heads.



T77-003

Average seed contents: 80

**Camassia leichtlinii  
'Avon's Stellar hybrids'**

Hardy North American plants, Camassia all like heavy soils in sun or part shade. They flower in late April or early May, (after the blue flowered forms which produce little or no seed). The flowering plants are 24-26" tall (60-90 cm). Colours will vary - pink, lilac, blue, cream and green. Sow the seed into a seed tray in the autumn and stand in a cold frame or a shady site out of doors. Allow one season in the seed tray before transferring to a nursery bed when dormant and big enough to handle. Plant into their final spot a year later when they should flower the next spring.



T77-021

Average seed contents: 80

**Nigella damascena  
(Love in the Mist)**

A hardy annual suitable for any soil but it must be grown in a sunny position. The common name is suggested by the way the flower is held in a nest of lacy bracts. This form is not the normal blue one, but opens white and matures to a wonderful antique pink, perhaps a form called Persian Rose. Originally from southern Europe these grow to between 8-20" (20-45cm) tall. Easy to grow and especially useful for providing colourful ground cover in poorer soils. Sow the seeds thinly, in the early autumn and again in early spring for a succession of flowers, directly into the soil, covering them lightly. They set bladder like seed pods after flowering, they should self sow in succeeding years.



T77-005

Average seed contents: 10

**Orlaya Grandiflora  
(White Lace Flower)**

A plant of meadows, vineyards and olive groves in the Mediterranean. Fern-like foliage and lace-like white umbels, with the outer petals larger than the inner. 18-24" tall (45-60cm). An easy to grow annual setting seed that you can collect and grow. Sow individually into small single 3" (7cm) pots of seed compost and germinate in warm conditions in the spring or early summer. Pot on as required to achieve a strong plant 4" (10cm) tall before planting out into a sunny border.



T77-006

Average seed contents: 25

**Gladiolus tristis**

A beautiful South African species that flowers in April/May in Britain with wonderful pale straw coloured flowers with pretty green highlights and a good perfume in the evenings. 3-4' (30-40 cm) tall. They will need a sheltered situation in cold gardens or cold districts, but if they can be grown in a favoured spot they will set seed and increase. They are in leaf through much of the winter when they will cope with temperatures down to -3°C. Sow the seed tray of multipurpose compost in the early autumn and leave out of doors till November when it can be moved into a cold greenhouse or similar protected site. Take out again in March and stand in part shade. When large enough to handle the small bulbs plant several into a larger pot of soil based compost.



T77-007

Average seed contents: 10

**Lunaria annua  
'Alba Variegata'**

Hardy biennial, late spring flowering with scented white flowers on branching hairy stems bearing leaves with strong white variegation. The seed cases are distinctive as papery translucent discs. Early spring sown plants will flower the following spring and summer but autumn sown seed will not flower till the second spring. The variegation becomes more pronounced with age. Grow in sun or part shade. Self seeding around the garden. Mature plants 2-3' tall (60-90cm)

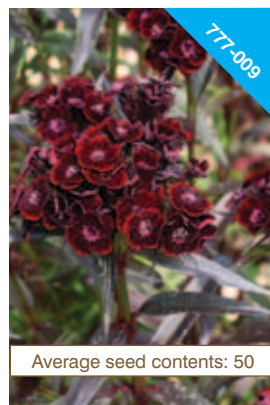


T77-008

Average seed contents: 80

**Nicotiana mutabilis  
(Ornamental Tobacco)**

A striking tender plant up to 5' (1.5m) with showers of white flowers which turn through pink to a deep magenta as they mature. The effect is spectacular with both colours present on the plant together. Sow thinly in warm moist conditions in the late spring only covering the seed very thinly (the seed is tiny). Once large enough to handle prick out a few plants into individual pots and grow them in warm, light conditions. Keep potting the plant on till it is 6" tall (15cm) when it can be planted out into a sunny border. Flowers in the late summer. If a plant is overwintered (in frost free conditions) flowering is much earlier and more profuse the second year.



T77-009

Average seed contents: 50

**Dianthus barbatus  
nigrescens 'Sooty'**

Sweet William. Hardy biennial with scented maroon-chocolate flowers on red stems and mid green foliage. Good as a border plant in May-June and for cut flower, grown in sunny conditions in well drained soils. Mature plants 12-15" tall (30-38 cm). Sow seed in April-July into a seed bed (or pots in a cold frame) and transplant to their flowering position in the autumn.



T77-010

Average seed contents: 15

**Tulbaghia cominsii  
x violacea**

Long flowering perennial of South African origin. Long thin leaved foliage, onion scented when crushed. Purple - pink flowers from June to October, 18-24" (45-60 cm) tall. Seedlings may vary, due to the hybrid nature of the plant. Sow in the very early spring, thinly in a coarse, soil based seedbed or pot and grow as you might do leek plants. Plant out when easy to handle about 1.5" (5 cm) apart in a sunny situation in free draining soil. Plants flower in their second year. Very good patio plants in planters, enjoying warm conditions and very drought tolerant. In cold areas mulch plants in the ground in winter and protect pots from extended freezing temperatures. Hardy outside to about -10°C.

P&P for any number of seed packets ordered alone within UK £1.50, or destinations within the EU or Switzerland please add £2.50 P&P

# More seeds from Avon Bulbs



**Double Pink**



**Double Shiraz**



**Double Black**



**Double Lilac**



**Double White**

## *Papaver somniferum*

Fully double flower heads with rich blackish purple petals. June flowering about 36" (90cm) tall. May need staking in windy gardens. They are plants of open, sunny situations in well drained soil and are hardy, but annual, so you will be reliant on falling (or collected) seed for future years. Self fertile, but some slight variation in flower colour may occur. Sow directly but thinly into a seedbed in the selected site in the autumn keeping some seed back for a successive sowing in the early spring. Poppy seed heads are poisonous (though actual poisoning is very rare).

Average seed contents: 80



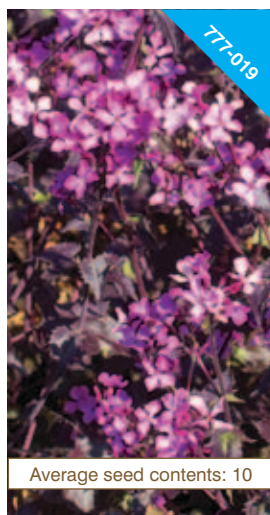
**Blackcurrant Fizz**



Average seed contents: 80

***Iberis umbellata*  
(Candytuft)**

A hardy annual from the Mediterranean growing to 12-14" (30-45cm) flowering for much of the summer with domed fragrant flowers in pink, mauve and white. Easy to grow and especially useful for providing colourful ground cover in poorer soils. Sow the seeds thinly, in the autumn to late winter, directly or into a seed tray, or sow 3 seeds into a 3" (7 cm) pot, only just covering the seed with a fine layer of compost. Leave outside, perhaps in a cold frame to allow germination. Plant out when the plants are big enough to handle into a sunny site allowing 6-8" (15-20cm) between plants. Staggered sowings will give longer flowering. They should set seed and gently spread further.



Average seed contents: 10

***Lunaria annua*  
(Chedglow)**

Hardy biennial flowering April to early May with wonderful chocolate leaves and lilac flowers, growing to 3' (1 m) or a bit more.

Decorative seed heads persist with translucent discs that can be used in dried arrangements.

Sow 2 seeds per single pot outside in a shady sheltered spot and plant out into the border in full sun or part shade when large enough. Sown in the spring, plants will flower the following year, but late sown (June onwards) will take a second year to flower. These will hybridise with other *Lunaria* close by. The leaves are eaten by rabbits.



**Glove sizing:** If unsure this is a guide – finger to wrist, or right round the palm, whichever the larger measure – under 8" we think the Small (7) size is likely to fit best, over 8" our Medium (10) may be better.

## MAXIFLEX GARDENING GLOVES



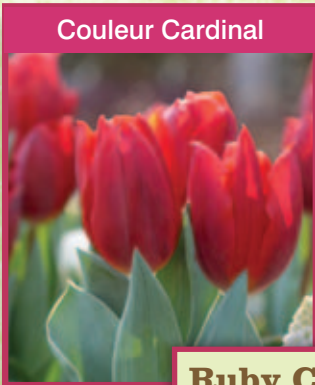
More and more people now garden in gloves. These are hard wearing and comfortable gardening gloves that still allow you to feel what you are doing but most importantly one's hands do not sweat inside them. Washable (inside out in a cool wash). The Medium size fits nearly everyone here, though a Small size is offered too. Include these with an order for £4.50 each (sent on their own please add £3.00 postage).

- 669 - 01 Maxiflex gloves (Medium)
- 669 - 02 Maxiflex gloves (Small)

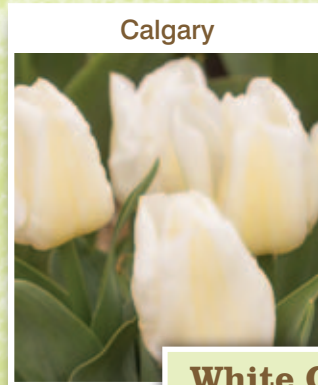
£4.50  
£4.50

P&P for any number of seed packets ordered alone within UK £1.50, or destinations within the EU or Switzerland please add £2.50 P&P

# 2015 Collections



**Ruby Collection**



**White Collection**



£19.50



£19.50

999-298

999-299

**Ruby**

**White**

**Colour Themed or Seasonal Tulip Collections.**

10 of each of 4 varieties for planting in pots or the garden. Ideal as Gifts.

**All discounted to £19.50 per collection**

**Pink**

**Late**



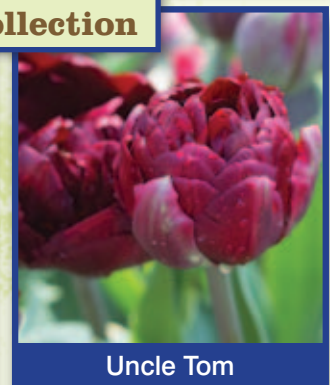
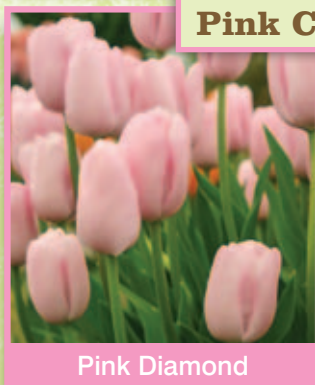
£19.50



£19.50

**Pink Collection**

**Late Collection**



999-300

999-301



# Order for Autumn despatch

Please specify plants and costs here, and complete the other side of the form.



Stock ref. no.	Plant name	Price and pack size	No. of packs required	No. x price £
131-106	<i>Tulipa Uncle Tom (EXAMPLE ONLY)</i>	5.75/10	2	11.50

The example at the top shows the information we need – in particular, the **reference number** given beside the plant name in the catalogue.  
 If possible, specify acceptable alternatives in case some of your choices are not available.

**Normal postage on any Autumn order is £4.95 (UK mainland only).**

**Please record personal and payment details overleaf**

subtotal	_____
carriage	_____
total	_____

**Remember – cards, gloves and diaries can be ordered to accompany your bulbs, saving on postage.**

**Please fold this sheet into a smaller envelope to avoid postal surcharges**

# Mail Order for Autumn 2015

Plants and bulbs to flower in the spring

Office use only:

Date received:

Order No:

AVON BULBS LTD • BURNT HOUSE FARM • MID LAMBROOK • SOUTH PETHERTON • SOMERSET • TA13 5HE

## Account number:

If you have ordered from us in the past few years and your catalogue bears an account number on the address label as a result, please do record it in the space provided.

Title: Mr  Mrs  Miss  Other \_\_\_\_\_

Name: \_\_\_\_\_

House Name/No: \_\_\_\_\_

Street: \_\_\_\_\_

Town: \_\_\_\_\_

County: \_\_\_\_\_

Country: \_\_\_\_\_ Postcode \_\_\_\_\_

Telephone/Mobile number: \_\_\_\_\_ / \_\_\_\_\_

Email address: \_\_\_\_\_ @ \_\_\_\_\_

It may be helpful for us or the carrier to contact you if any problems arise.

## Other Delivery Instructions:

Is this an order for collection?

Is it a gift?

If you are likely to be out during the day, please suggest where the parcel should be left or who else might accept delivery.

If you want your order to be sent as a gift to someone else (invoice to you), tick the box and put the recipient's name and address and postcode in the space provided to the right.

For our own interest, did you use our website in making your selections?  Yes  No

If this is your first order with us please tell us how you heard about us, or where you obtained our catalogue?

## Payment

Orders are not accepted without payment except by prior agreement.

Please include payment or please charge my **Visa / Mastercard** (least favoured) account.

Cheque enclosed  Yes, value £ \_\_\_\_\_, or

Card No.     .     .     .

Valid from date   /   Card expiry date   /

Security code (last three digits on reverse of card)    Signature \_\_\_\_\_

**Please fold this sheet into a smaller envelope to avoid postal surcharges**

# 2015 Collections

**Exotic Emperor**



x10

**Juan**



x10

**Early Tulips Collection**

**Allium karataviense**



x10

**Anemone White Splendour**



x10

**Ipheion Alberto Castillo**



x10

**Sun Lovers Collection**

**Princess Irene**



x10


**Purissima**



x10


**Early Tulips**

**Iris Prof Blaauw**



x15

**Ornithogalum umbellatum**



x10

**Sun Lovers**

999-302

999-303

**Themed Collections of Bulbs for autumn planting in pots or the garden.**

**Ideal as Gifts**

**Anemone banda Blue**



x10

£14.00

**Camassia esculenta**



x10

**Little Blue Bulbs**

**Gladiator**



x3

£26.00

**Mount Everest**



x3

**Tall Alliums**

**Muscari azureum**



x10

**Scilla bifolia**



x10

**Scilla siberica**



x10

**Little Blue Bulbs Collection**

**Pink Jewel**



x3

**Powder Puff**



x3

**Tall Alliums Collection**

999-304

999-305



## MALVERN SPRING 2015

**Something completely different – instead of a display that mimics a garden we tried to connect visitors with the fact that we are suppliers of bulbs by Mail Order.**

Receiving such an order in the autumn the bulbs are still dormant, but in their dormancy lies a promise from us that they will grow and flower in their due time. So the display was of cardboard boxes from which a big range of flowering bulbs were arranged. The outline of the display was in the shape of England and Wales, surrounded by a blue sea (limited space cut off Scotland, no offence meant!) and our location in Somerset was matched by a bright red Royal Mail postbox alongside which the pillar box red Tulipa Unique de France was a perfect match.



## Free issue of Gardens Illustrated\*

Here's your chance to sample an issue of **Gardens Illustrated** – the world's most beautiful gardens magazine – **absolutely free!**

SIMPLY CALL  
**0844  
776 1874<sup>†</sup>**  
QUOTING  
AVBLFR515

\*Your free issue will either be the August issue, mailed on 20 July, or the September issue mailed on 17 August. This offer is available to UK residents only for the first 1,000 copies claimed. Limited to one copy per household on a first come, first served basis. OFFER ENDS 30 JULY 2015. †Lines are open Monday to Friday, 8am to 8.30pm, and Saturday to Sunday, 10am to 2pm. Calls to this number will be charged (to the caller) at 3.5p-5p per minute from a BT landline at any time; call charges from other providers and mobile phones may vary.



If undelivered, please return to sender:  
Avon Bulbs  
Burnt House Farm  
Midl Lambrook  
South Petherton  
Somerset  
TA13 5HE

