



SEPTEMBER EVENT

Monthly Meeting: 8 p.m. Monday, September 13, 2021

Mershon Hall at the Atlanta Botanical Garden

Eric Sauer: *Maxilaria*—There is more than *tenuifolia*

Please come masked; the meeting will also be on Zoom

Judges' Corner

The Atlanta Judging Center met on Saturday, August 14 2021 and evaluated 15 plant entries. Three received AOS awards:

Miltoniopsis roezlii var. *xanthina* 'Buzz', HCC/AOS, 77 points, exhibited by Firelli Alonso and Jon Crate.

Rhyncattleanthe Dragon's Fire 'Aurora', AM/AOS, 83 points, exhibited by Firelli Alonso and Jon Crate. This is the first award to this cross of *C. Memoria Trudi* Marsh x *Rhyncattleanthe* Picotee Flight.

Coryhopea Hayden Dallas 'Pterodactyl', AM/AOS, 80 pts, exhibited by Doug Hartong. This is also a first award to this cross of *Stanhopea jenischiana* x *Coryanthes macrantha*.

You are always welcome to bring plants to our monthly judging held at the Atlanta Botanical Gardens in Mershon Hall. We have an educational presentation at 12 noon preceding judging on the second Saturday of every month.

Continued on p. 2

Eric Sauer: *Maxilaria*— There is more than *tenuifolia*

Eric has been growing orchids for over 30 years under the greenhouse name of River Valley Orchids, and specializes in South American species with a focus on *Maxillaria* and *Phragmipedium*. He has spoken internationally and across the United States. Eric recently had culture chapters published by Guido Braem in his book on *Paphiopedilums* and in his book on *Phragmipediums*. He also has a feature article on *Maxillaria* in *Orchid Digest* and several of his *Maxillaria* photos published in Eric Christenson's book on *Maxillaria*.

Eric has received over 85 awards from the American Orchid Society. He has three orchids named after him, including two species from Ecuador. He regularly works with other *Maxillaria* aficionados around the world to better understand the genus. Eric's real job is as a registered landscape architect and is the planning manager for Five Rivers Metro Parks in Dayton, Ohio.

Eric's web site is www.rvorchids.com and he will bring plants to sell.



Maxilaria luteograndiflora



Miltoniopsis roezlii var. *xanthina* 'Buzz'



Maxilaria hennisiana

ATLANTA ORCHID SOCIETY**Officers****President****[Helen \(HB\) Blythe-Hart](#)** 770-656-4054**Vice-President/Programs****[Danny Lentz](#)****Secretary****[Jody Gomez](#)****Treasurer****[Jon Crate](#)** 770-846-9541

270 17th Street NW, Unit 4501

Atlanta, GA 30363

Immediate Past President**[David Mellard](#)** 404-310-9899**Trustees****[Carl Quattlebaum](#)****[Doug Hartong](#)****[Larry Kikkert](#)****[Véronique Perrot](#)****[Maegan Brass](#)****[Jason Mills-Shoulta](#)****Volunteers****AOS Rep – [Barbara Barnett](#)****Greengrowers – [Danny Lentz](#)****Librarian –****MAOC Rep – [Doug Hartong](#)****Meeting Hospitality –****Membership – [Barbara Barnett](#) &****[Maegan Brass](#)****Education and Outreach – [Lynne Gollob](#)****Silent Auction – [Carson Barnes](#)****Monthly Ribbon Judging – [David Mellard](#)****Newsletter – [Véronique Perrot](#) &****[Mark Reinke](#)****Orchid Digest Rep – [David Mellard](#)****Show Chairs (2021) – [Danny Lentz](#) &****[Jody Gomez](#)****Website/Social Media – [Danny Lentz](#) &****[Jeremie Carroll](#)****The Atlanta Orchid Society Bulletin**

Volume 62: Number 09 – September 2021

Newsletter Editors: **[Véronique Perrot](#)** & **[Mark Reinke](#)**

The [Atlanta Orchid Society](#) is affiliated with the [American Orchid Society](#), the [Orchid Digest Corporation](#), the [Mid-America Orchid Congress](#), and the [Garden Club of Georgia](#).

Judges' Corner*Continued from p. 1*

Currently masks are required by the ABG for all inside activities. Please check with me before attending as changes are possible with the ongoing covid pandemic.

Regards,

Doug Hartong

Chair, Atlanta Judging Center

678 667 6028

*Rhyncattleanthe Dragon's Fire 'Aurora'**Coryhopea Hayden Dallas 'Pterodactyl'***EVENTS CALENDAR****September**

11 – AOS monthly judging: check with

[Doug Hartong](#)

13 – Atlanta Orchid Society Monthly

Meeting, Mershon Hall, ABG:

Eric Sauer on Maxilarias

November

19–21 – AtIOS Orchid Show

Notes on plants submitted to the virtual meeting of the Atlanta Orchid Society for August 2021

Notes by Mark Reinke; photos by various members of the AtIOS



C. cernua

Cattleya Alliance

This month Barbara Barnett presented us with the only species entry in this group with her cute little *Cattleya cernua*. This Brazilian orchid is definitely in the running for the smallest in the genus, with clusters of flowers up to one inch across produced from growths that are not much bigger. The plants produce bright colors such as this one descend from the populations which grow inland in Southeast Brazil in the states of Minas Gerais and São Paulo. There they form sheets of creeping growths on horizon-



Rhyncattleanthe Dragon's Fire

tal tree limbs and sometimes even rocks, in microclimates where the humidity is higher than the more desolate surrounding areas. Mounted culture is the best way to grow this tiny species. In pots, the plants will quickly decline as soon as the media begins to break down.

Danny & Dianne showed us the lovely round flower of *Cattleya* (Bright Angel x Mini Purple) 'Rich Mountain.' This plant came out of a cross I did many years ago. The flowers were all good quality, but I wasn't able to keep any of them alive over the long term. It seems like Danny

& Dianne are having the same challenge as the older portions of the plant are dying back.

Jon & Fi showed us a recent compact growing hybrid, *Rhyncattleanthe* Dragon's Fire, which combines a total of 18 different species. The immediate parents, *C. Memoria Trudi Marsh* and *Rth. Picotee Flight* are both vividly flared flowers, but the genetics of this seedling sorted out in a more subtle, yet beautiful way.

Larry Kikkert gave us a look at a couple of cluster flowered hybrids we have seen in the past that are in bloom again.



C. (Bright Angel x Mini Purple) 'Rich Mountain'

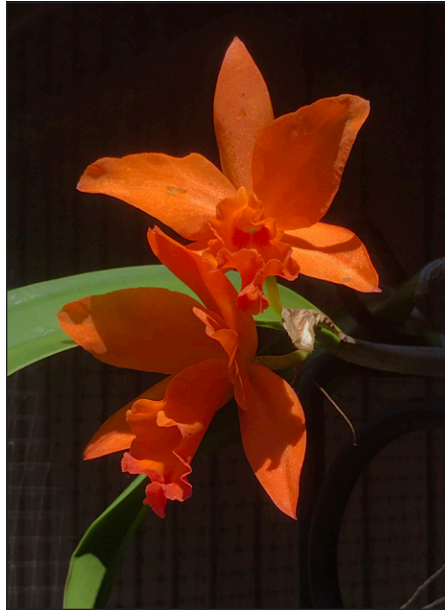


Rhyncolaeliocattleya Hawaiian Passion 'Carmela'



Rhyncattleanthe Coral Gold 'Pacific Rainbow'

Especially nice are the two heads of icy green flowers with pale yellow lips on his *Rhyncolaeliocattleya* Hawaiian Passion 'Carmela.' Also very nice is his quixotic *Rhyncattleanthe* Coral Gold 'Pacific Rainbow,' which seems to look a little different every time it flowers! His *Rth.* Love Passion 'Orange Bird' still has a way to go to reveal its full potential of seven to nine blooms per inflorescence on a well-grown mature plant.



Rth. Love Passion 'Orange Bird'

Larry also gave us two *B. nodosa* hybrids with *Bc.* Hamlyn's Magic (which he entered as *C. Jalapa* x *B. nodosa*) and *Bc.* Cecilia Irene.



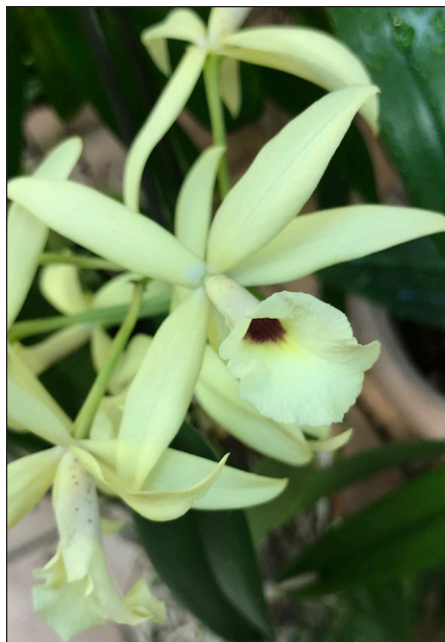
Cym. finlaysonianum

Cymbidium Alliance

Danny & Dianne presented the only entry in this group for August with *Cymbidium finlaysonianum*, a warmth loving species from lower elevations of Southeast Asia, Indonesia and the Philippines that can grow as an epiphyte on large old trees and on rocks and cliffs where humus has accumulated. It produces small flowers on pendant spikes, but, when paired with one of the large flowered hybrids, can produce showy results on plants that do well in hot climates.



Bc. Hamlyn's Magic



Bcl. Cecilia Irene



Den. Butterscotch Ube

Dendrobium Alliance

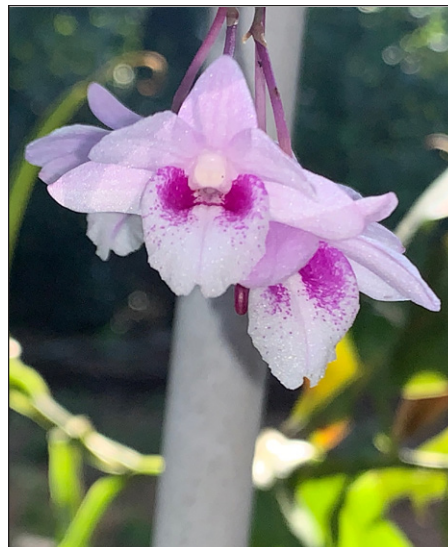
This month, Jon & Fi and two different and very interesting Spatulata, or “Antelope” flowered hybrids to show us. *Dendrobium* Butterscotch Ube is a brand-new registration that combines a dose of *Den. antennatum* with two doses of *Den. tangerinum*. They also showed us their *Den. Samarai* once again, this time with five showy inflorescences. This one is a primary hybrid between *Den. antennatum* and *Den. stratiotes*. While both entries become fairly large plants, they can produce numerous flowers at various times of the year that are very long lasting.

Karl Harden presented us with a very

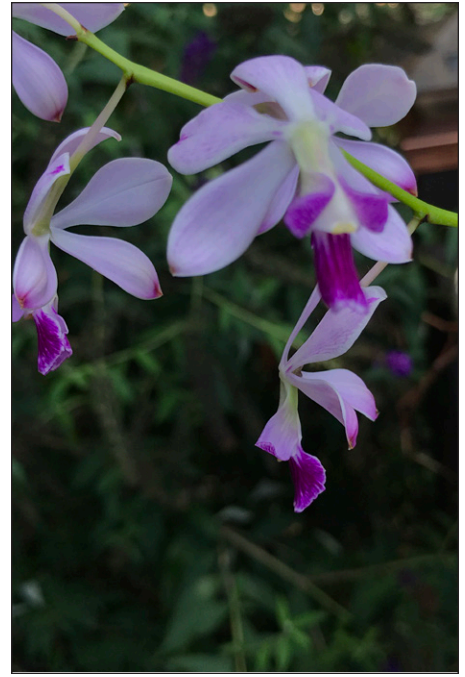


Den. Samarai

different species, *Den. cumulatum*, which is gradually deciduous and produces dangling clusters of pale pink flowers with deeper centers from the upper portion of older, bare canes. The leaves have a purple flush throughout. This species can be hard to keep going in a pot over time as it seems to decline the moment the media starts to break down. I’m trying one on a tree fern mount now to see if I can keep it happier that way, albeit with almost daily watering during the growing season.



Den. cumulatum



E. dichroma

Epidendrum/Encyclia Alliance

Larry Kikkert presented us with the only species in this group for August with *Encyclia dichroma*, a native of Brazil that is not frequently seen. It produces comparatively large two toned orchid pink flowers from a thin wiry inflorescence above a very compact plant. The description for this orchid is very interesting so I will quote Bakers verbatim: *This orchid is found along the coast in the states of Bahia, Sergipe, and Alagoas... Plants grow in trees in very dry hardwood thickets in association with cacti and bromeliads. They grow on the lower, horizontal branches of brush, usually 12 in. (30 cm) or so above the sand, within a few hundred yards (meters) of the sea, and at least 50–100 ft. (15–30 m) above sea level. Drifting sand frequently covers the branches on which the plants are growing, giving the appearance that they are growing in sand. Visitors to the habitat report that during some seasons, the only moisture available is from heavy dew.* I have two older plants that have overfilled baskets, but so far, every time I have removed a division, it failed to grow. A seedling from a hybrid I made between this species and *Encyclia* Orchid Jungle that I sold to Thanh Nguyen of Springwater Orchids a few years back received an Award of Merit in 2020 and he kindly registered it as *E. Memoria Joyce Reinke* in honor of my late mother.

Both Larry and Jon & Fi presented plants of *Vaughnara* Fiftieth Anniversary



Miltoniopsis roezlii var. *xantina*



Vaughnara Fiftieth Anniversary 'Newberry,'
top: Jon & Fi's; bottom: Larry's

Oncidium Alliance

Jon & Fi once again had *Miltoniopsis roezlii* var. *xanthina*, which, as I have mentioned before, grows in Northwest Colombia and Southwest Panamá, in humid forests at the lowest elevation of the five recognized species of *Miltoniopsis*.

Both Jon & Fi and Helen Weil had several of the dependable and fragrant hybrids that descend from *Onc. sotoanum*. Jon & Fi showed off *Onc. Sharry Baby* 'Sweet Fragrance' as well as an offspring from it, *Onc. Aka Baby* 'Raspberry Chocolate.' Helen had an additional offspring from that same orchid, *Onc. Heaven Scent* 'Redolence,' which also has the



Onc. Sharry Baby 'Sweet Fragrance'

'Newberry' in flower. This cute little hybrid between *Epi. magnoliae* and *Bc. Richard Mueller* is a great performer, and my two plants are almost constantly in bud or bloom.



Onc. Heaven Scent 'Redolence'



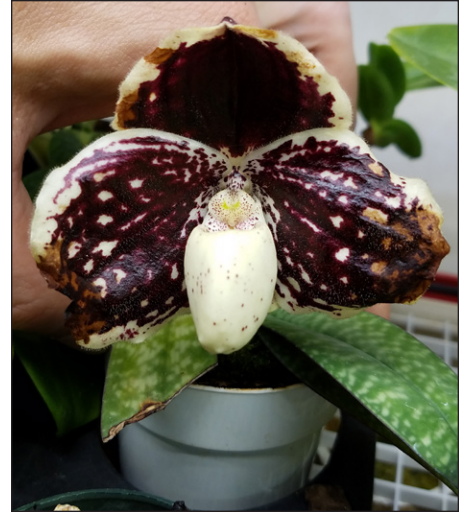
Onc. Aka Baby 'Raspberry Chocolate'



Brassidostele Gilded Tower 'Yellow Star'

most compact growth and flowering habits of the bunch. Helen's *Onc.* Wildcat 'Yellow King' has similar habits of branched inflorescences and many flowers as these others but lacks any scent as it does not have *Onc. sotoanum* in the family tree.

Lastly in this group, Jon & Fi's *Brassidostele* Gilded Tower 'Yellow Star' shows the strong influence of two different *Brassia* species in its family tree with its spidery appearance. A nice feature about all of the orchids we saw in this group for August is that they are not tied to a specific season of bloom but flower any time of the year as new growths mature.



Paph. leucochilum

Slipper Alliance

Danny & Dianne gave us a dark example of *Paphiopedilum leucochilum*, whose species name refers to the contrasting white lip. Described in 1975, there isn't a great deal of information about the habitat for this species other than it comes from the southern islands of Thailand. It is sometimes considered a variety of *Paph. godefroyae*, which is usually found on limestone cliffs just above the sea in that region. *Paph.* QF Mini, also shown by Danny & Dianne, is a recent hybrid between *Paph. leucochilum* and *Paph. thaianum*.



Onc. Wild Cat 'Yellow King'



**Orchid
Digest**

When you're serious about orchids.

JOIN THE ORCHID DIGEST CORPORATION

Don't let the name fool you, the Orchid Digest is a non-profit membership-based organization dedicated to orchids. Designed to appeal to the mid-range to advanced grower, nothing beats the Orchid Digest. For just \$39/year you get 4 issues of full-color, in-depth articles about orchids. The magazine is large format and the fourth issue of the year is always an extra-special edition devoted to a single genus. For membership application forms contact David Mellard (404-237-1694) or visit www.orchiddigest.com to join online.



Paph. QF Mini

*Phal. pulchra* 'Red Robin'*Phal. hieroglyphica*

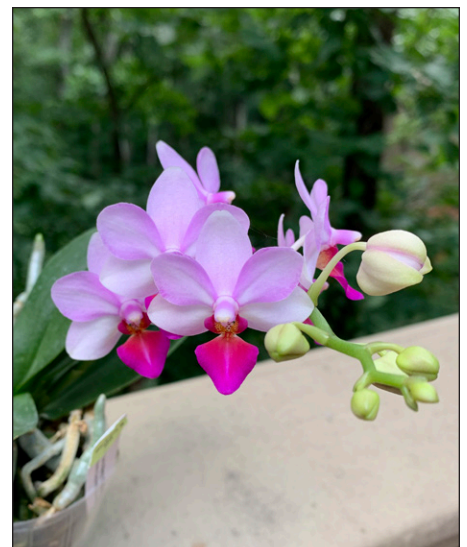
Phalaenopsis Alliance

We saw four different *Phalaenopsis* species this month, and as is common among the summer to fall flowering members of the genus, they all produce a few flowers from the tips of persistent inflorescences which bloom annually for several to many years. Barbara Barnett showed us *Phal. pulchra* 'Red Robin,' which comes from the Philippines. The flower segments are narrow, but usually of a very saturated purple color and with a glossy texture and carry fragrance. Danny & Dianne offered us two different plants of *Phal. hieroglyphica*, also from the Philippines and *Phal. violacea* from Borneo, Sumatra, and Malaya, which also carries fragrance. Jon & Fi had a couple of blooms open on their *Phal. amboinensis*, which carried four more inflorescences, still active, but not currently in flower. This Indonesian species can bloom almost any time of the year but only rarely with more than a dozen flowers open at any one time. One exception was the 'Memoria Chester Kawakami'

*Phal. amboinensis**Phal. violacea**Phal. Yaphon Oh Mygod*

clone, which received a 95 point Certificate of Cultural Merit in 1992 with 21 inflorescences carrying an astounding 228 flowers. Nowadays that score would be classed as a Certificate of Cultural Excellence (CCE).

In hybrids, Jon & Fi had their luminous *Phal. Yaphon Oh Mygod* in bloom again, with glossy leaves almost as eye catching as the flowers. And Barbara Barnett showed off *Phal. Liu's Berry* 'Orchid House SW#1,' AM/AOS, as sweet mini with flowers carrying lips of fluorescent purple. It is a mix of *Phal. equestris*, *Phal. parishii*, and *Phal. amabilis*.

*Phal. Liu's Berry* 'Orchid House SW#1'

*Holcoglossum kimballiana*

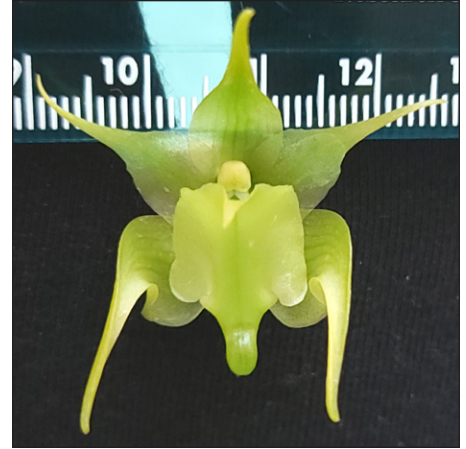
Vandaceous Alliance

Once again, we had a large variety in the Vandaceous entries this month. Danny & Dianne showed off the white and vivid purple blooms of *Holcoglossum kimballiana*. This species, with purplish, terete foliage often grows on rocks in full sun in the mountains of Thailand and adjacent portions of China. Their plant is a couple months ahead of the peak bloom time, which is October, perhaps because it is grown under lights. My plant of the same species is only just now starting to spike.



Jon & Fi showed us the cute little translucent green flowers of *Aeranthes arachnites*, a species from Reunion Island. It carries several flowers in succession at the end of slender lax inflorescences.

In hybrids, Danny & Dianne gave us

*Aeranthes arachnites*

Vandachostylis Lou Sneary 'Pinky,' AM/AOS. This is a division from a plant I got directly from R.F. Orchids at least 25 years ago, shortly after it was awarded.

*Vandachostylis* Lou Sneary 'Pinky' AM/AOS

American Orchid Society
Education. Conservation. Research.

JOIN THE AMERICAN ORCHID SOCIETY

12 issues of *Orchids*, the Society's monthly full color magazine chock full of insightful articles and tempting ads for plants and supplies.

10% off purchases from the Society's Bookstore and Orchid Emporium.

Reduced or free admission to participating botanical gardens.

For a limited time, if you join for two years you will also get a \$30 gift certificate (good on an order of \$100 or more)

at any one of 13 commercial growers who advertise in *Orchids*.

**Membership now includes access to OrchidPro,
the database that replaces OrchidsPlus**

JOIN TODAY

Single Membership, 1 year - \$79, 2 years - \$153

Student membership, 1 year - \$54, 2 years - \$103

JOIN OR RENEW ONLINE AT www.aos.org

amazon smile

You can help out the Atlanta Orchid Society simply by shopping at Amazon through their Amazon Smile program. To do this simply go to smile.amazon.com every time you want to shop at Amazon. When you go to checkout for the first time, you will be asked to designate your charity. If you type Atlanta Orchid Society in the search bar, we are the only result that comes up. Select that one. You can change the charity at any time, by following the directions on the About page. All of the details of the Amazon Smile program can be found on the Amazon site at: smile.amazon.com/gp/chpf/about/

*Vanda Pachara Delight*

It bears smaller, but tighter clusters of flowers than the more widely seen 'Blue-bird' variety, and they tend to come all at once for me. The fragrance is wonderful.

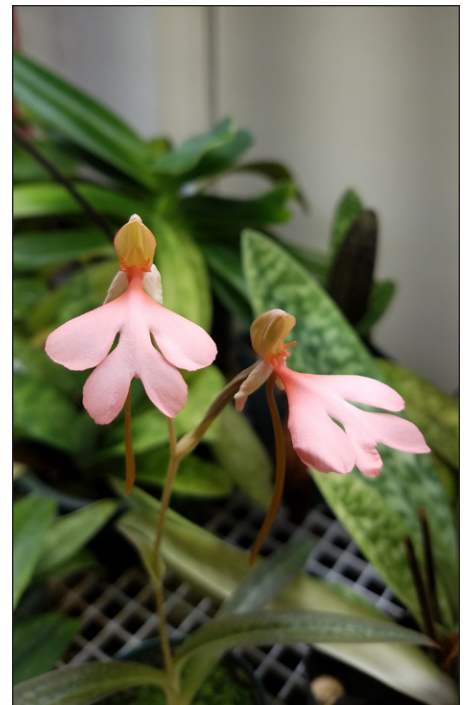
Magg Wattley showed off the large, rich violet purple flowers of *Vanda Pachara Delight*, a 1999 introduction from Thailand that is almost 60% *V. coerulea*. This should make it better adaptable to cooler nights in winter. There are some forms of this cross that are nearly true blue and others that are pink or nearly red.

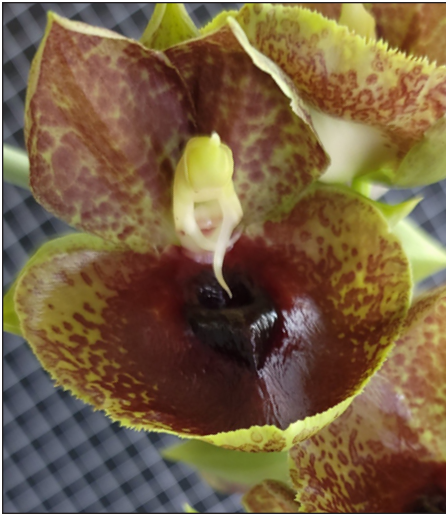
*Dendrochilum uncatum* (?)

Miscellaneous

All of Danny & Dianne's entries in this category for August are from the Old World. They showed us a well flowered *Dendrochilum*, species. While there can be lots of variation between different plants of the same species in this genus, I'm going to guess this is *Ddc. uncatum*, which may be the same as *Ddc. formosinum*. *Dendrochilum* produce small, but numerous flowers and there are multiple awards for examples of this species with thousands of flowers open at once.

Their other two entries were different species of *Habenaria*, a race of tuberous orchids that go seasonally dormant, at which time the entire above ground portions of the plants die away. *Hab. medusa*, with its finely divided lip is a large plant for the genus, sometimes reaching two feet tall in flower when well grown. This species comes from Indonesia. *Hab. rhodocheila*, is smaller, but with a very colorful lip that can range from pale pink to yellow, fluorescent orange, and nearly true red on individual plants.

*Hab. medusa**Hab. rhodocheila*



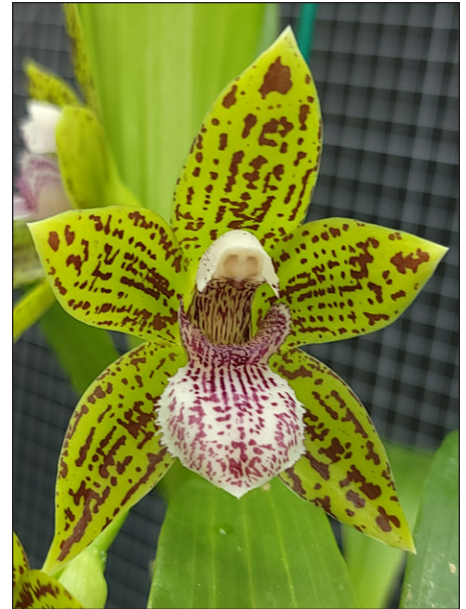
Catasetum expansum

All of Jon & Fi's entries in this group, on the other hand, come from the New World. They gave us an example of *Catasetum expansum* with an inflorescence carrying male flowers. This deciduous species from western Ecuador is quite variable in color. They also presented us with *Cochlezella* Amazing 'Pretty in Pink,' which is a cross between *Cochleanthes*



Cochlezella Amazing 'Pretty in Pink'

flabelliformis and *Warczewiczella amazonica*. The latter species was classed under *Cochleanthes* in 1959, but Kew recognizes it under this older genus, described in 1854. Unlike this previous orchid, this one prefers year-round watering and fairly shaded light levels. Lastly, Jon & Fi showed us an example of *Nottara* Lucy's Sassafras in bloom again. As mentioned



Nottara Lucy's Sassafras

before, this cross made by Fred Clarke of Sunset Valley Orchids combines five different genera in the greater Zygotepalum family.

Do you love Orchids?
Have you ever thought about becoming an American Orchid Society Judge?

Come learn with us
judges@aos.org

Join the Atlanta Orchid Society

Membership in the Atlanta Orchid Society is \$30 for individuals or \$45 for households. Yearly membership runs January 1-December 31. Anyone joining in the third quarter will get a 50% discount on the current year's membership. Anyone joining in the fourth quarter will purchase a membership for the following year. You can join at one of our monthly meetings, contact the society's Treasurer (see page 2) for a membership application, or complete an application online at our website: www.atlantaorchidsociety.org