

COMMON BROMELIADS OF BELIZE

Ian Anderson's Caves Branch Botanical Garden and Marie Selby Botanical Gardens

Height range of the plant: 10-46 cm (4-18 in) without the inflorescence (flower spike)



*Tillandsia
streptophylla*



*Tillandsia
bulbosa*



*Tillandsia
balbisiana*



*Tillandsia
festucoides*



*Tillandsia
juncea*



*Tillandsia
schiedeana*

COMMON BROMELIADS OF BELIZE

Ian Anderson's Caves Branch Botanical Garden and Marie Selby Botanical Gardens

Height range of the plant: 10-64 cm (4-25 in) without the inflorescence (flower spike)



Tillandsia variabilis



Tillandsia brachycaulos



Tillandsia fasciculata



Tillandsia dasyliriifolia



Tillandsia utriculata



Catopsis berteroniana

COMMON BROMELIADS OF BELIZE

Ian Anderson's Caves Branch Botanical Garden and Marie Selby Botanical Gardens

Height range of the plant: 10-50 cm (4-20 in) without the inflorescence (flower spike)



Guzmania lingulata



Vriesea heliconioides



Werauhia gladioliflora



Catopsis nutans



Catopsis sessiliflora



Catopsis morreniana

COMMON BROMELIADS OF BELIZE

Ian Anderson's Caves Branch Botanical Garden and Marie Selby Botanical Gardens

Height range of the plant: 50-138 cm (20-54 in) without the inflorescence (flower spike)



Aechmea tillandsioides



Leaf tip



Leaf edge



Leaf tip



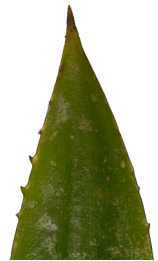
Leaf edge



Aechmea bracteata



Billbergia viridiflora



Leaf tip

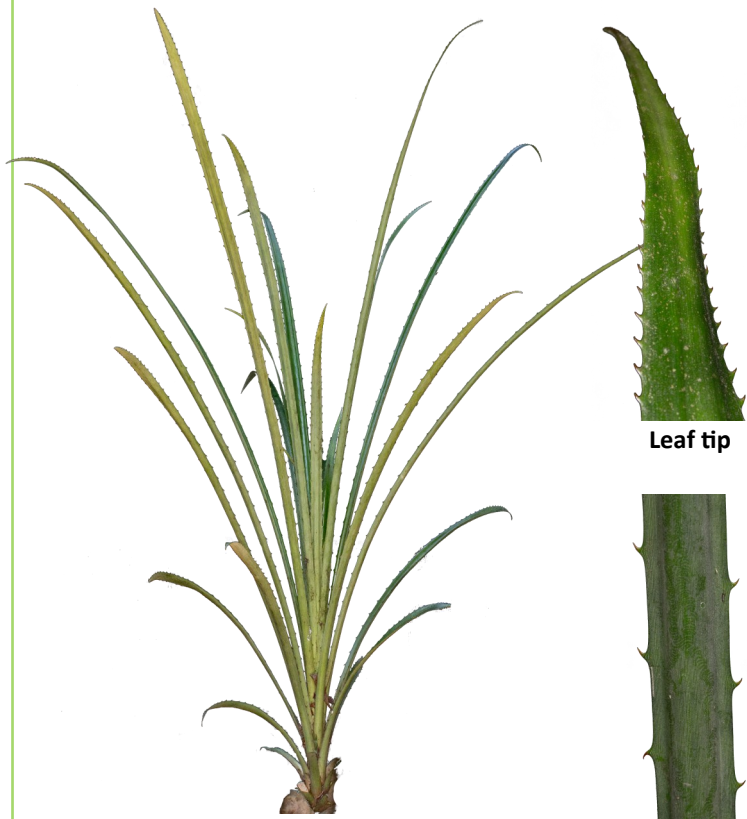


Leaf edge

COMMON BROMELIADS OF BELIZE

Ian Anderson's Caves Branch Botanical Garden and Marie Selby Botanical Gardens

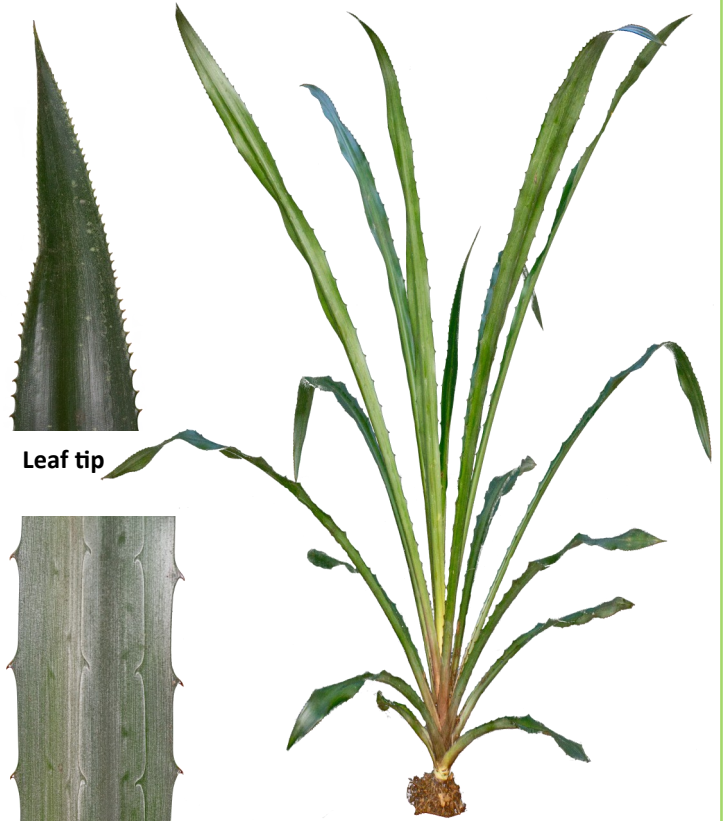
Height range of the plant: 80-305 cm (30-120 in) without the inflorescence (flower spike)



Bromelia pinguin

Leaf tip

Leaf back and edges



Aechmea magdalenae

Leaf tip

Leaf back and edges



Leaf tip



Leaf edge



Androlepis skinneri

Photo credit: David Amaya and Marvin Paredes