



BIODIVERSITY

OF

LALINAČKA

SALT MARSH

SPECIES CAPTURED
ON CAMERA
2020

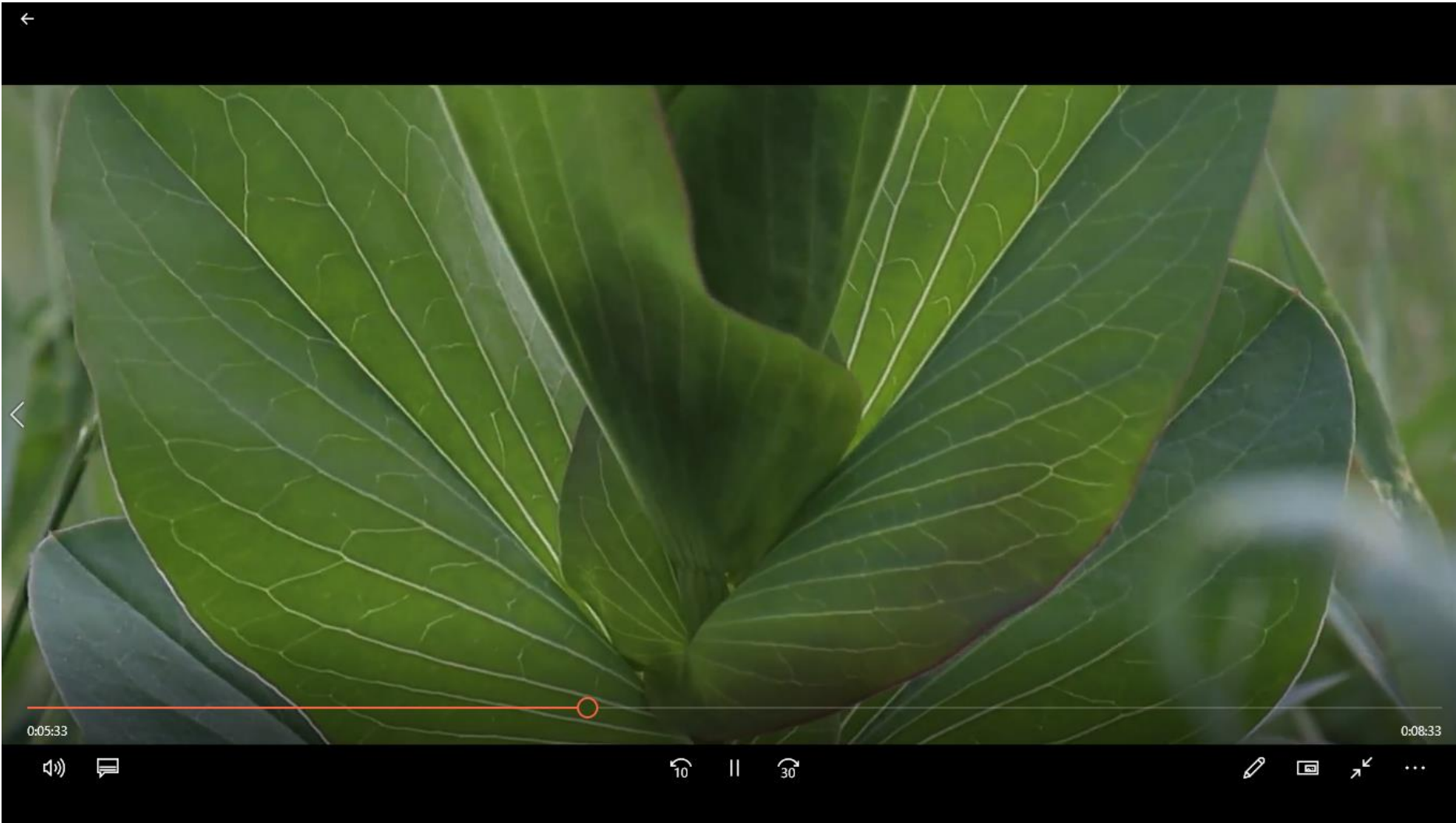


PLANTS



*Phragmites
australis (Cav.)
Trin. ex Steud.*

common reed



*Bupleurum
rotundifolium L.*

Hound's-ear



*Matricaria
chamomilla L.*

chamomile



Galatella cana
(Waldst. & Kit.)
Nees



*Leopoldia
tenuiflora*
(Tausch) Heldr.



Limonium gmelinii
(Willd.) Kuntze

Siberian Statice



*Melampyrum
arvense L.*

field cow-wheat



Stachys milanii
Petrović



*Camphorosma
monspeliaca L.*



Allium guttatum subsp.
dalmaticum (A.Kern. ex
Janch.) Stearn.



Consolida regalis Gray.



Adonis flammea Jacq.



Ornithogalum refractum
Kit. ex Schltzl.



Galatella villosa (L.)
Rchb.f.



Papaver rhoeas L.

Matricaria chamomilla L.



Carex divisa

Juncus gerardi



Melampyrum arvense L.



ANIMALS

The background features a large green semi-circle on the left side. To its right, there is a teal circle. Further right, there are several teal dashed lines of varying lengths and orientations. On the far right, there is a teal square outline and a vertical teal dashed line. At the top, there is a teal triangle pointing downwards and a teal circle partially visible on the left edge.

INVERTEBRATA



Fam Formicidae



Empusa fasciata
Male and female



Plebejus argus



Pieris napi



Aglais io



Fam Pyrrhocoridae



Fam Acrididae



Carinatodorcadion fulvum



Ordo Odonata



Coccinella septempunctata



Gryllus campestris



Ordo Araneae



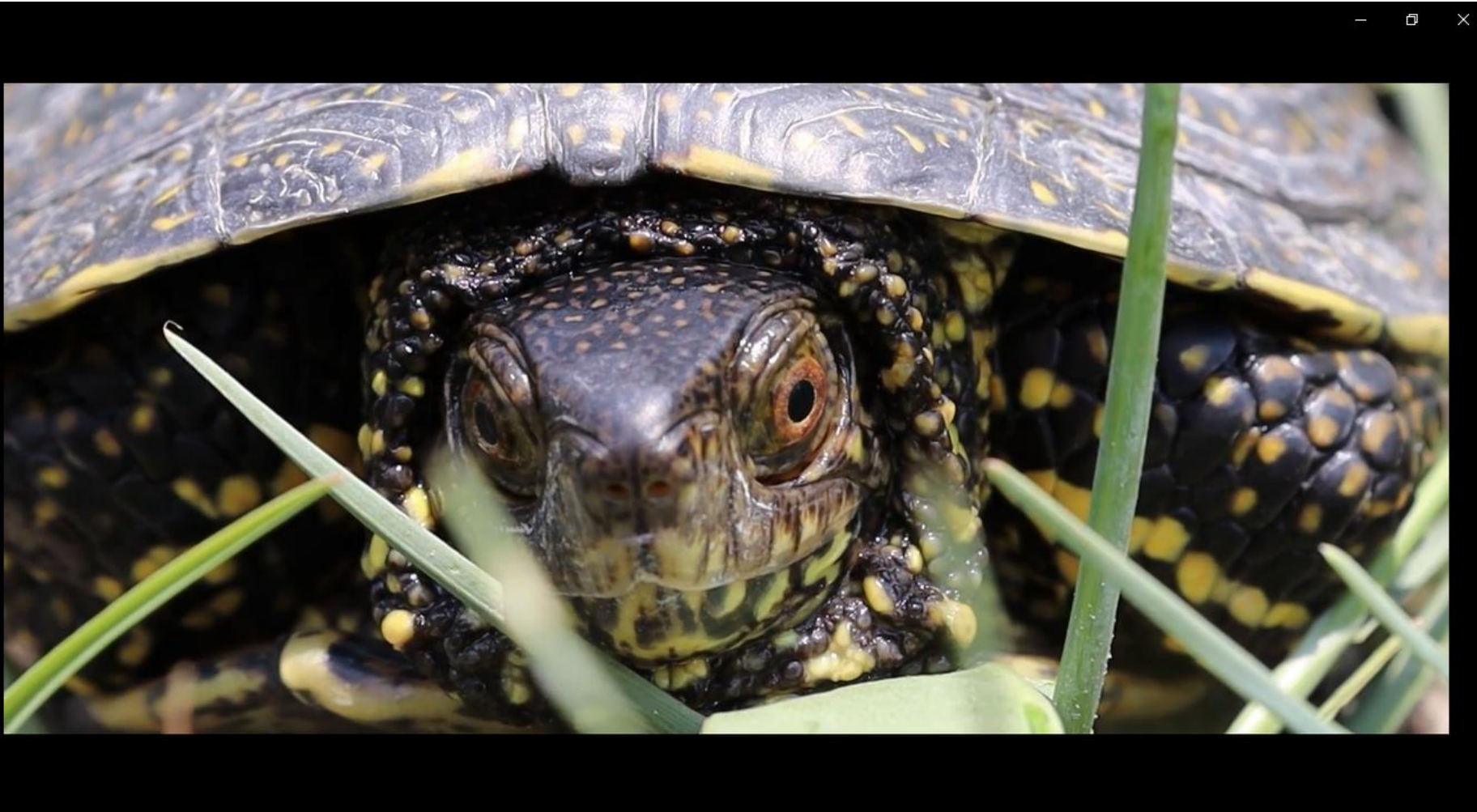
REPTILES and AMPHIBIANS



Pelophylax kl. esculentus complex



Lacerta viridis



Emys orbicularis

The background features a large green semi-circle on the left side. To its right, there is a teal circle. Further right, there are several teal dashed lines of varying lengths and orientations. On the far right, there is a teal square outline and a vertical teal dashed line. At the top, there is a teal triangle pointing downwards and a teal circle partially visible on the left edge.

BIRDS



Circus pygargus



Streptopelia turtur



Perdix perdix



Vanellus vanellus



*Acrocephalus
arundinaceus*





Cuculus canorus



Saxicola rubicola



Sturnus vulgaris



Emberiza calandra



Emberiza melanocephala



Passer hispaniolensis



Buteo buteo



Corvus corax



Motacilla flava



Falco tinnunculus



Falco vespertinus



Ciconia ciconia

The background features several abstract geometric elements: a large teal circle in the top left, a teal triangle in the top center, a teal circle in the top right, a teal square in the middle right, and a teal dashed line in the bottom right. A large green semi-circle is on the left side.

MAMMALS



Ordo Rodentia