



Designs with Water in Mind.
Discover Xeriscape.



Fort Collins Conserves. It's Our Style.

What Is Xeriscape?

The word “Xeriscape”
(pronounced ZEER-i-scape)
is derived from the Greek
word “xeros” meaning “dry.”
Xeriscape stands for water
conservation in landscaping.

Not one particular style or look,
a Xeriscape is an attractive,
sustainable and water-efficient
landscape based on sound
horticultural practices.





Design with Water in Mind.

Think Xeriscape.

Do you have an area of your yard you would like to Xeriscape? Use this brochure to find a landscape plan to suit your needs. Whether you're looking for a design for a narrow strip, shady area or slope, these designs will provide lushness and year-round color and interest. In addition to the beauty of your new landscape, you'll be pleasantly surprised how little water is actually needed to maintain it.

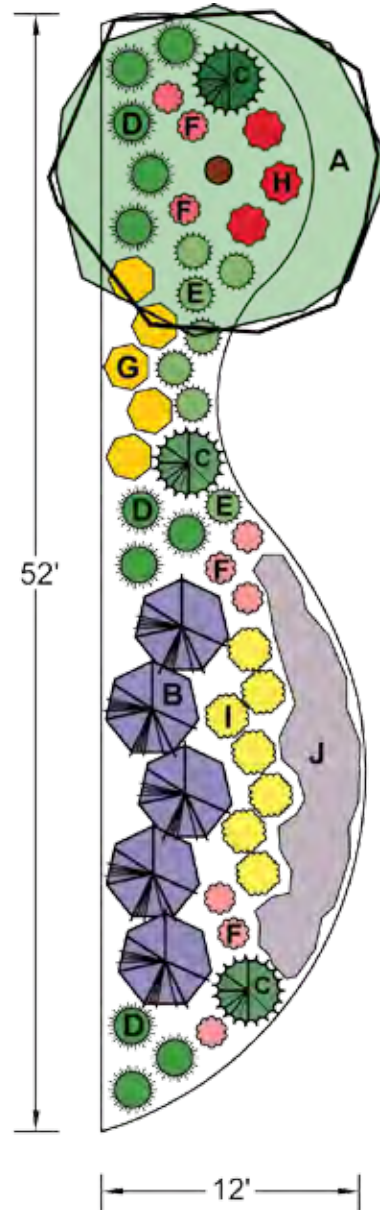
Design Themes	Page
Year-Round Beauty	3
A Natural Look	7
For The Senses	11
Made in The Shade	15
Specialty Gardens	21
Driveway Solutions	26



Colorful in All Seasons

Plant List

- A. Winter King Hawthorn, *Crataegus viridis* 'Winter King' (1)
- B. Russian Sage, *Perovskia atriplicifolia* (5)
- C. Mugo Pine, *Pinus mugo* 'Mops' (3)
- D. Karl Foerster Grass, *Calamagrostis acutifolia* 'Karl Foerster' (11)
- E. Hameln Dwarf Fountain Grass, *Pennisetum alopecuroides* 'Hameln' (7)
- F. Autumn Joy Sedum, *Sedum spectabile* 'Autumn Joy' (9)
- G. Goldsturm Black-eyed Susan, *Rudbeckia fulgida* 'Goldsturm' (5)
- H. Red Coral Bells, *Heuchera sanguinea* 'Splendens' (3)
- I. Threadleaf Coreopsis, *Coreopsis verticillata* (7)
- J. Snow in Summer, *Cerastium tomentosum* (27)

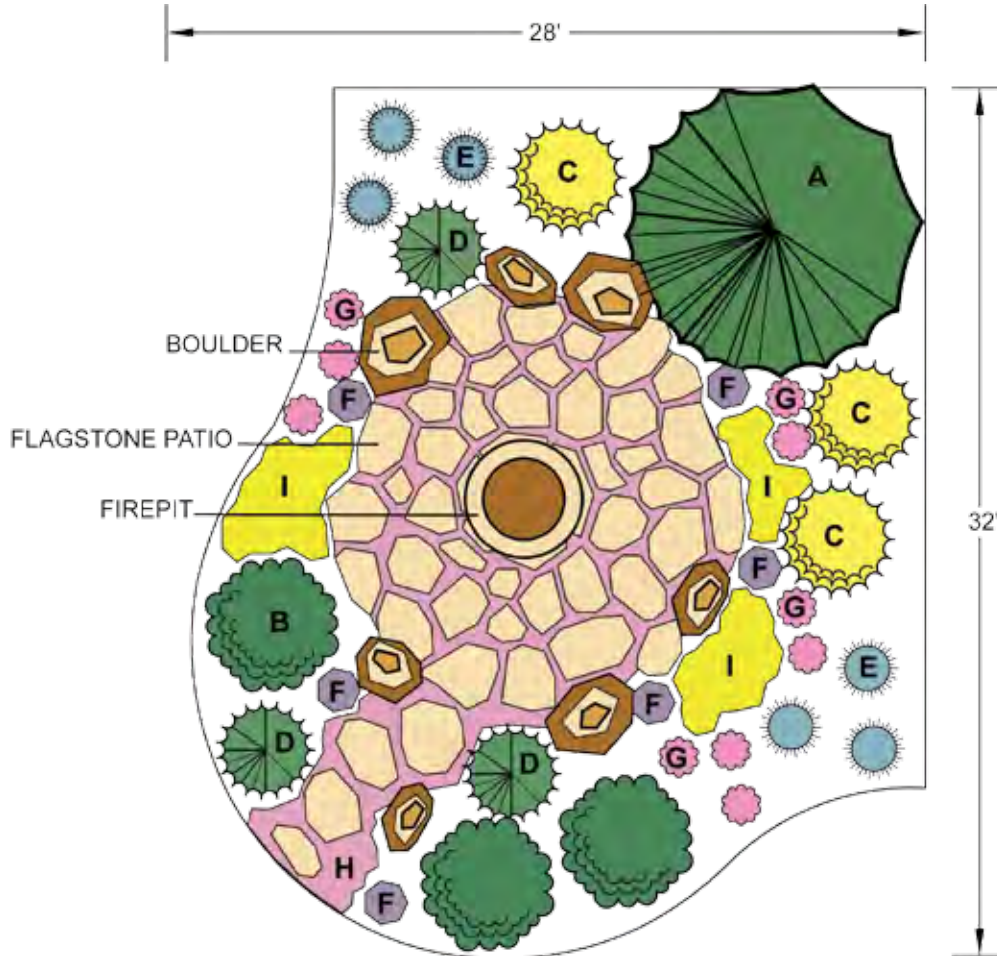


Design

Alissa Strickland and Zac Cinkel
MB Design Group, a division of Mill Brothers
Landscape and Nursery, Inc.
(970) 493-3883
mbln@millbrothers.com
www.millbrothers.com

Easy Living

Year-Round Beauty



Plant List

- A. Bristlecone Pine, *Pinus aristata* (1)
- B. Gro-Low Fragrant Sumac, *Rhus aromatica* 'Gro-low' (3)
- C. Spanish Gold Broom, *Cytisus purgans* 'Spanish Gold' (3)
- D. Whitebud Mugo Pine, *Pinus mugo* 'Whitebud' (3)
- E. Heavy Metal Switch Grass, *Panicum virgatum* 'Heavy Metal' (6)
- F. Hidcote Lavender, *Lavandula angustifolia* 'Hidcote' (6)
- G. Red Rocks Penstemon, *Penstemon mexicali* 'Red Rocks' (10)
- H. Red Creeping Thyme, *Thymus praecox* 'Coccineus' (15)
- I. Firepit

Design

Alissa Strickland and Zac Cinkel
MB Design Group, a division of Mill Brothers
Landscape and Nursery, Inc.
(970) 493-3883
mbln@millbrothers.com
www.millbrothers.com

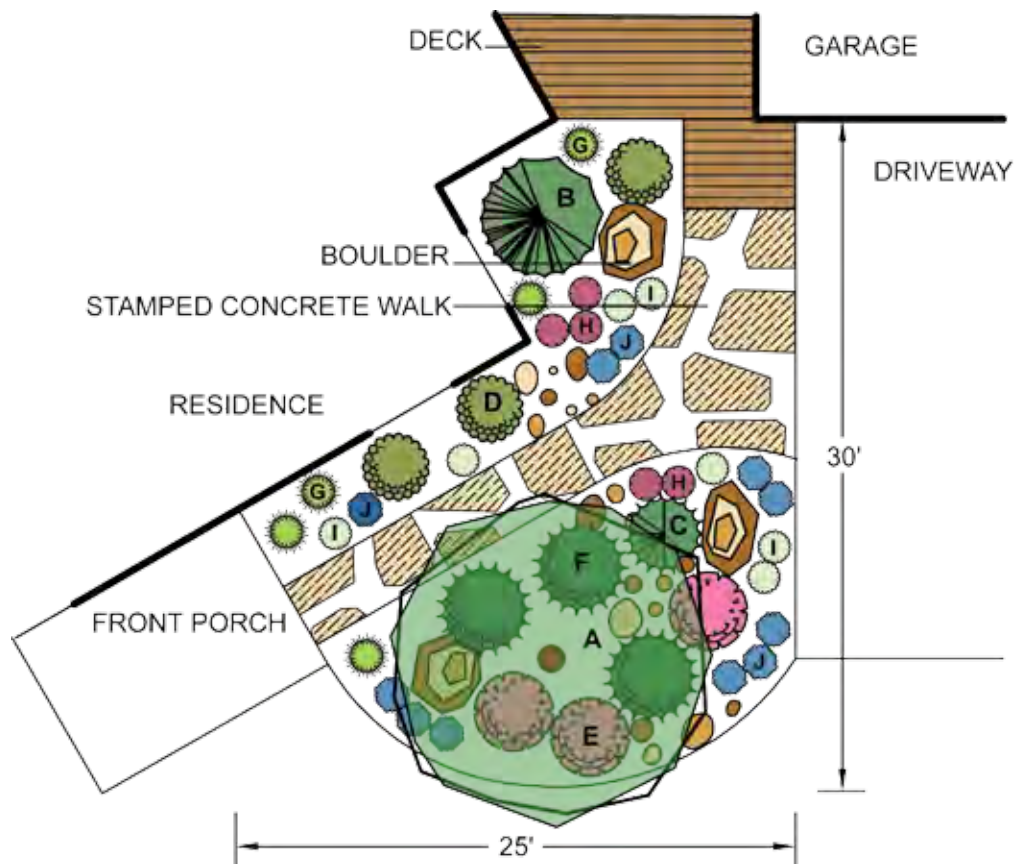
Four Seasons Beauty

Plant List

- A. Toba Hawthorn, *Crataegus x mordenensis* 'Toba' (1)
- B. Tannenbaum Pine, *Pinus mugo* 'Tannenbaum' (1)
- C. Mops Mugo Pine, *Pinus mugo* 'Mops' (1)
- D. Carol Mackie Daphne, *Daphne x burkwoodii* 'Carol Mackie' (3)
- E. Nearly Wild Rose, *Rosa* 'Nearly Wild' (3)
- F. Mock Bearberry Manzanita, *Arctostaphylos x coloradoensis* 'Mock Bearberry' (3)
- G. Overdam Feather Reed Grass, *Calamagrostis x acutiflora* 'Overdam' (5)
- H. Magnus Purple Coneflower, *Echinacea purpurea* 'Magnus' (5)
- I. Little Gem Candytuft, *Iberis sempervirens* 'Little Gem' (7)
- J. Blue Woolly Speedwell, *Veronica pectinata* (11)

Plant Spring Bulbs:

'Bright Gem' Tulip, 'White Tete-a-tete' Daffodil and 'Tricolor' Crocus around the boulders with perennials.

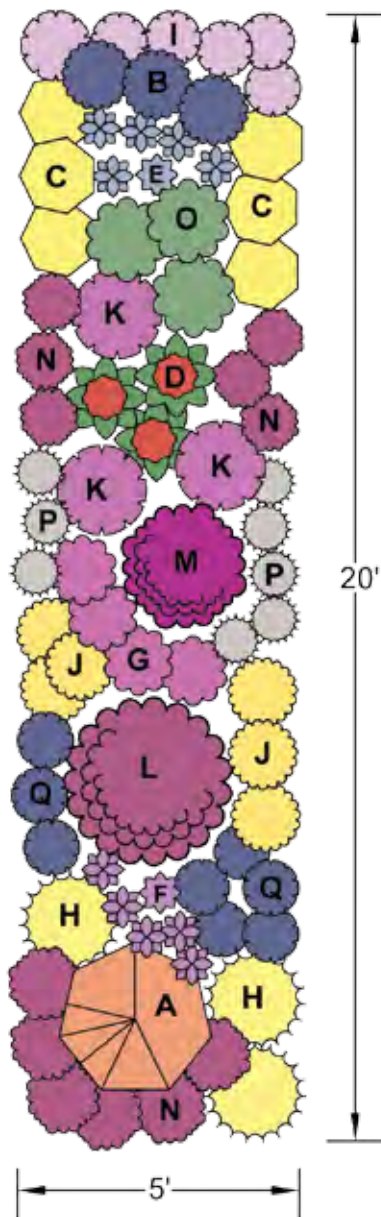


Design

Connie Barber
 Barber Landscape Design
 (970) 215-8521
barberlandscape@hotmail.com

Lauren Springer Hell Strip

Year-Round Beauty



Notes

This design has full sun exposure, with something in bloom from spring through autumn. It is adapted to unamended soil and clay. Apply pea gravel mulch 1" deep. Needs 2" of water per month (rain or irrigation) from May to October. Recommended watering system includes three 20-foot lengths of soaker hose under gravel mulch. For a larger area, repeat the planting pattern to extend dimensions as needed.

Plant List

- A. Sunset Hyssop, *Agastache rupestris* (1)
- B. Scott's Sugarbowl, *Clematis scottii* (3)
- C. Sulfur Flower, *Eriogonum umbellatum* (6)
- D. Red Yucca, *Hesperaloe parviflora* (3)
- E. Bearded Iris, *Iris germanica* (blue-flowered) (6)
- F. Variegated Sweet Iris, *Iris pallida* 'Argentea Variegata' (6)
- G. Plains Gayfeather, *Liatris punctata* (4)
- H. Narrow-leaf Evening Primrose, *Oenothera fremontii* 'Shimmer' (3)
- I. Lavender-leaf Beardtongue, *Penstemon linarioides* 'Silverton' (6)
- J. Yellow Pineleaf Penstemon, *Penstemon pinifolius* 'Mersea Yellow' (6)
- K. Hybrid Beardtongue, *Penstemon x mexicali* 'Shadow Mountain' (3)
- L. Desert Sage, *Salvia pachyphylla* (1)
- M. Purple Autumn Sage, *Salvia* 'Ultra Violet' (1)
- N. Purple Mountain Savory, *Satureja montana* ssp. *illyrica* (12)
- O. Silver Pyrethrum Daisy, *Tanacetum cinerariifolium* (3)
- P. Partridge Feather, *Tanacetum densum* ssp. *amani* (8)
- Q. Silver Speedwell, *Veronica incana* (8)

Design

© 2008 Lauren S. Ogden
www.plantdrivendesign.com

On The Rocks

Plant List

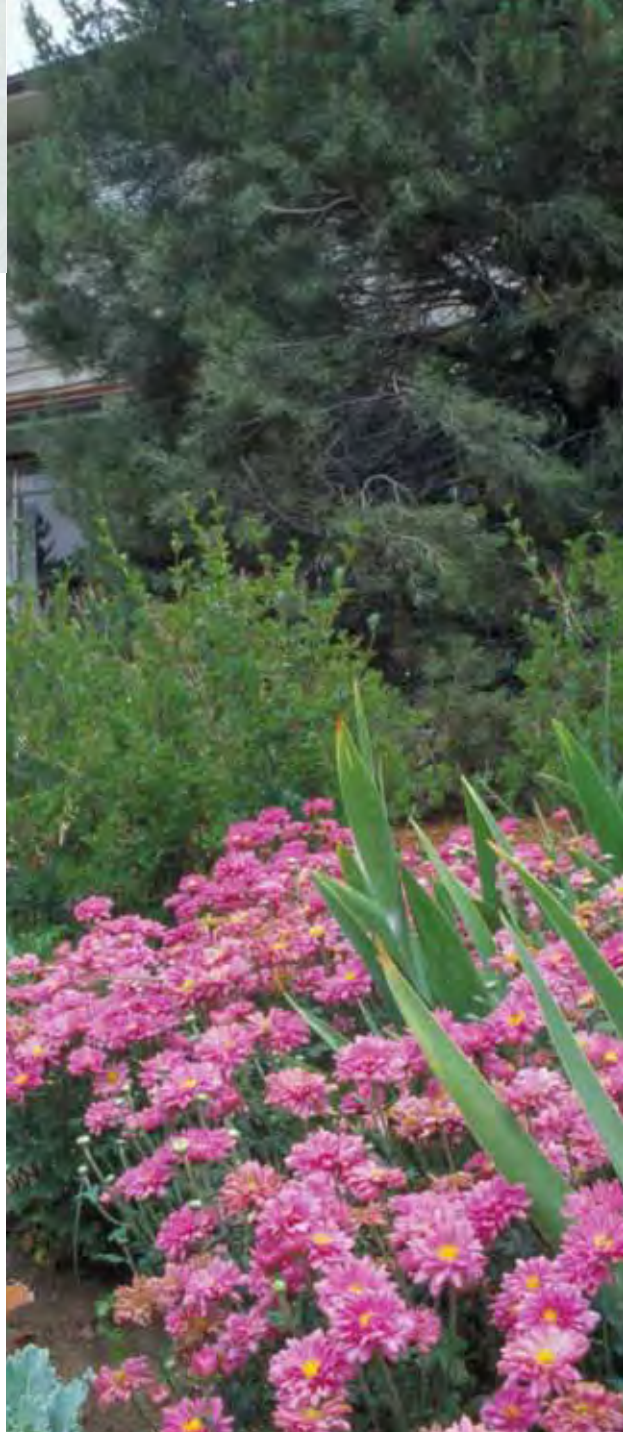
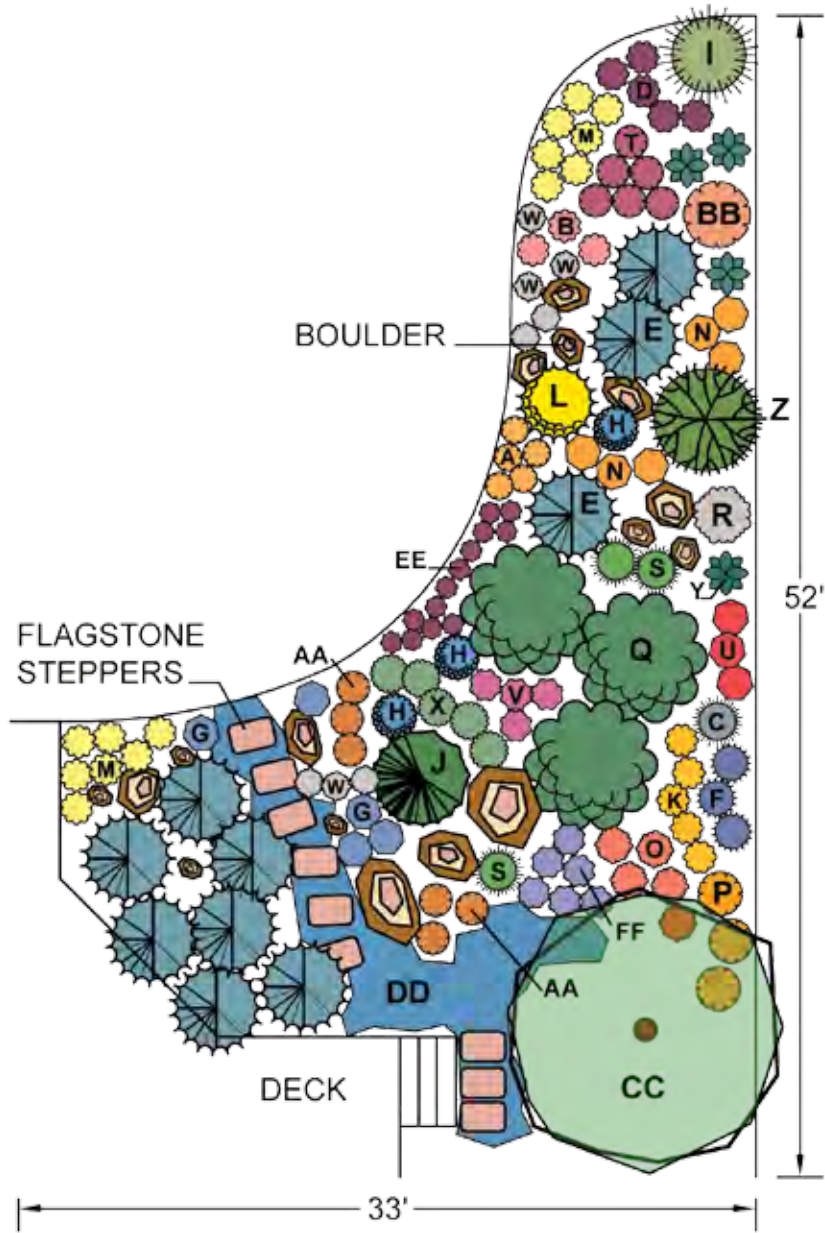
- A. Arizona Sun Blanket Flower, *Gaillardia x grandiflora* 'Arizona Sun' (5)
- B. Autumn Fire Sedum, *Sedum* 'Autumn Fire' (3)
- C. Big Bluestem Grass, *Schizachyrium scoparium* (1)
- D. Black Jack Sedum, *Sedum* 'Black Jack' (5)
- E. Blue Carpet Singleseed Juniper, *Juniperus squamata* 'Blue Carpet' (10)
- F. Blue Glow Globe Thistle, *Echinops bannaticus* 'Blue Glow' (3)
- G. Blue Hill Salvia, *Salvia sylvestris* 'Blue Hill' (5)
- H. First Choice Blue Mist Spirea, *Caryopteris x clandonensis* 'First Choice' (3)
- I. Giant Sacaton Grass Los Lunas form, *Sporobolus wrightii* (1)
- J. Glenmore Dwarf Limber Pine, *Pinus flexillis* 'Glenmore Dwarf' (1)
- K. Golden Baby Goldenrod, *Solidago* 'Golden Baby' (5)
- L. Lydia Woadwaxen, *Genista lydia* (1)
- M. Kannah Creek Sulphur Flower, *Eriogonum umbellatum* 'Kannah Creek' (14)
- N. Orange Butterfly Weed, *Asclepias tuberosa* (6)
- O. Orange Carpet Hummingbird Trumpet, *Zauschneria garrettii* 'Orange Carpet' (5)
- P. Oranges & Lemons Blanket Flower, *Gaillardia x grandiflora* 'Oranges & Lemons' (3)
- Q. Pawnee Buttes Sandcherry, *Prunus besseyi* 'Pawnee Buttes' (3)
- R. Powis Castle Silver Sage, *Artemisia* 'Powis Castle' (1)
- S. Prairie Dropseed Grass, *Sporobolus heterolepis* (3)
- T. Purple Coneflower, *Echinacea purpurea* (6)
- U. Red Birds in a Tree, *Scrophularia macrantha* (3)
- V. Rondo Penstemon, *Penstemon barbatus* 'Rondo Mix' (4)
- W. Serbian Yarrow, *Achillea serbica* (8)
- X. Silver edged Horehound, *Marrubium rotundifolium* (5)
- Y. Soapweed Yucca, *Yucca glauca* (4)
- Z. Staghorn Sumac, *Rhus typhina* (1)
- AA. Sunset Foxglove, *Digitalis obscura* (6)
- BB. Sunset Hyssop, *Agastache rupestris* (1)
- CC. Tatarian Maple, *Acer tataricum* (1)
- DD. Turkish Veronica, *Veronica liwanensia* (59)
- EE. Voodoo Sedum, *Sedum spurium* 'Voodoo' (13)
- FF. Whipple's Penstemon, *Penstemon whippleanus* (6)

Design

Sally Guthart

Earthborn Landscape Design

(970) 443-1130



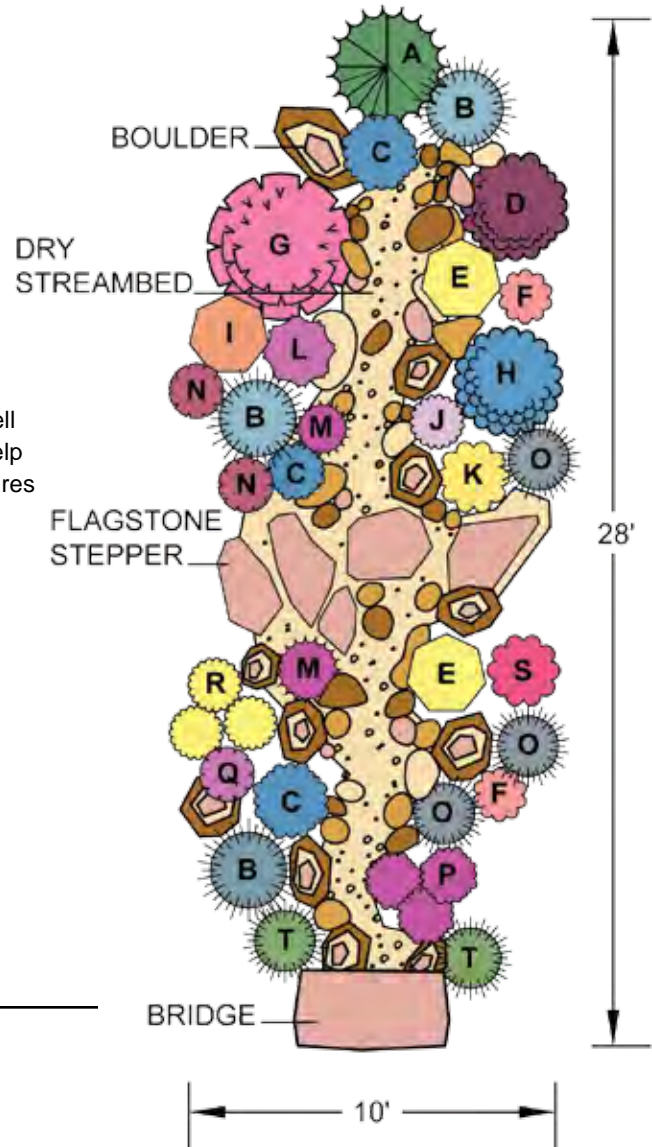
A Colorful Dry Streambed

Plant List

- A. Mops Mugo Pine, *Pinus mugo* 'Mops' (1)
- B. Blue Avena Grass, *Helictotrichon sempervirens* (3)
- C. Turkish Veronica, *Veronica liwanensis* (3)
- D. Crimson Pygmy Barberry, *Berberis thunbergii* 'Atropurpurea Nana' (1)
- E. Kannah Creek Sulphur Flower, *Eriogonum umbellatum* 'Kannah Creek' (2)
- F. Showy Stonecrop, *Sedum spectabile* 'Autumn Joy' (2)
- G. Nearly Wild Rose, *Rosa* 'Nearly Wild' (1)
- H. Blue Mist Spirea, *Caryopteris x clandonensis* (1)
- I. Sunset Hyssop, *Agastache rupestris* (1)
- J. Blue Mat Penstemon, *Penstemon linarioides* var. *coloradoensis* 'Silverton' (1)
- K. Moonshine Yarrow, *Achillea* 'Moonshine' (1)
- L. Hopflower Oregano, *Origanum libanoticum* (1)
- M. Firewitch Dianthus, *Dianthus gratianopolitanus* 'Firewitch' (2)
- N. Purple Coneflower, *Echinacea purpurea* (2)
- O. Little Bluestem, *Schizachyrium scoparium* (3)
- P. Poppy Mallow, *Callirhoe involucrata* (3)
- Q. Shadow Mountain Penstemon, *Penstemon x mexicalli* 'Psymers' (1)
- R. Silver Blade Evening Primrose, *Oenothera macrocarpa* ssp. *incana* 'Silver Blade' (3)
- S. Red Valerian, *Centranthus ruber* (1)
- T. Prairie Dropseed, *Sporobolus heterolepis* (2)

Notes

A dry streambed works well and on a slight slope to help drain soggy areas. It requires some construction and digging. Materials needed include larger rocks, river rock cobbles, gravel and landscape fabric. Mulch around the plants with pea gravel.

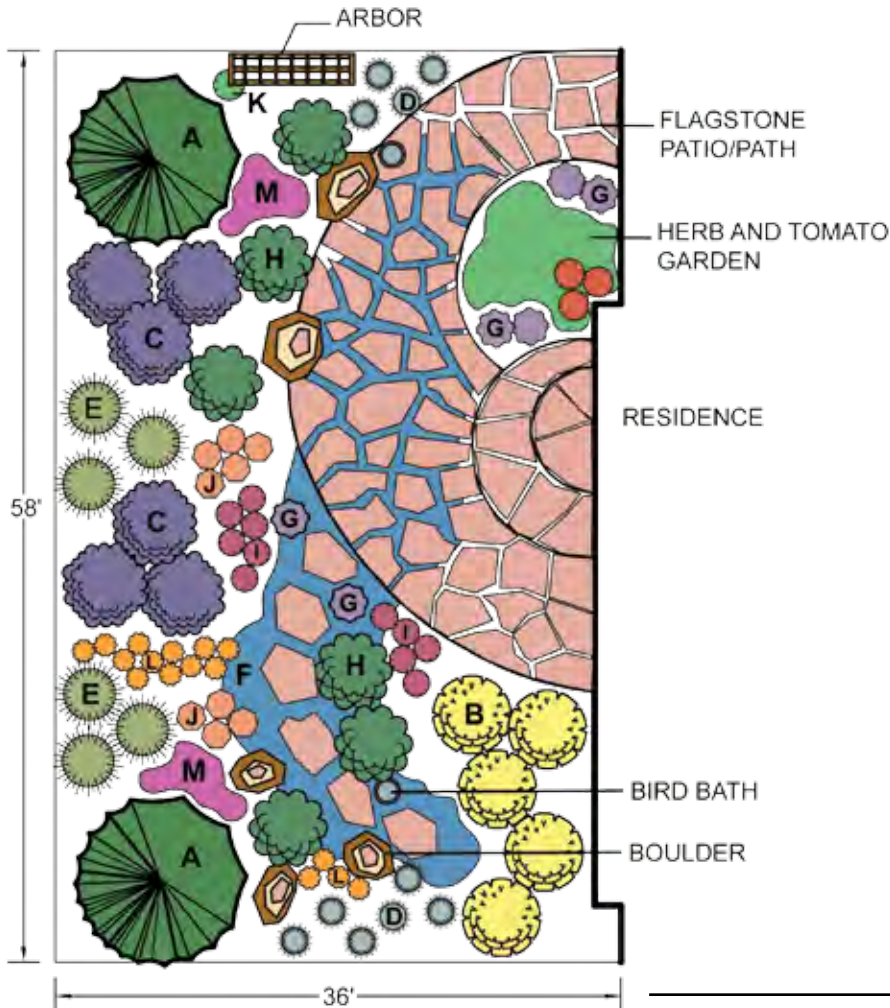


Design

Peggy Burch
 (970) 577-1912
peggyaburch@q.com

Sunny Haven

A Natural Look



Plant List

- A. Bristlecone Pine, *Pinus aristata* (2)
- B. Golden Wings Rose, *Rosa* 'Golden Wings' (5)
- C. Silver Fountain Butterfly Bush, *Buddleia alternifolia* 'Argentea' (6)
- D. Indian Grass *Sorghastrum nutans* (10)
- E. Giant Sacaton Grass Los Lunas form, *Sporobolus wrightii* (6)
- F. Turkish Veronica, *Veronica liwanensis* (27)
- G. Munstead Lavender, *Lavandula angustifolia* 'Munstead' (6)
- H. Pawnee Buttes Sand Cherry, *Prunus besseyi* 'Pawnee Buttes' (6)
- I. Purple Coneflower, *Echinacea purpurea* (11)
- J. Sunset Hyssop, *Agastache rupestris* (9)
- K. St. Theresa Seedless Grape, *Vitis* 'St. Theresa Seedless' (1)
- L. Butterfly Weed, *Asclepias tuberosa* (16)
- M. Species Tulips, *Tulipa clusiana* 'Cynthia', *Tulipa humilis* 'Eastern Star', *Tulipa dasystemon*

Notes

This design is best in a sunny, southern exposure and requires low to no additional water once established.

Design

Joanie Schneider
 Sustainscapes by Joanie
 (970) 484-3948 office
 (970) 310-1841 cell
joanieschneider@yahoo.com
www.sustainscapes.com

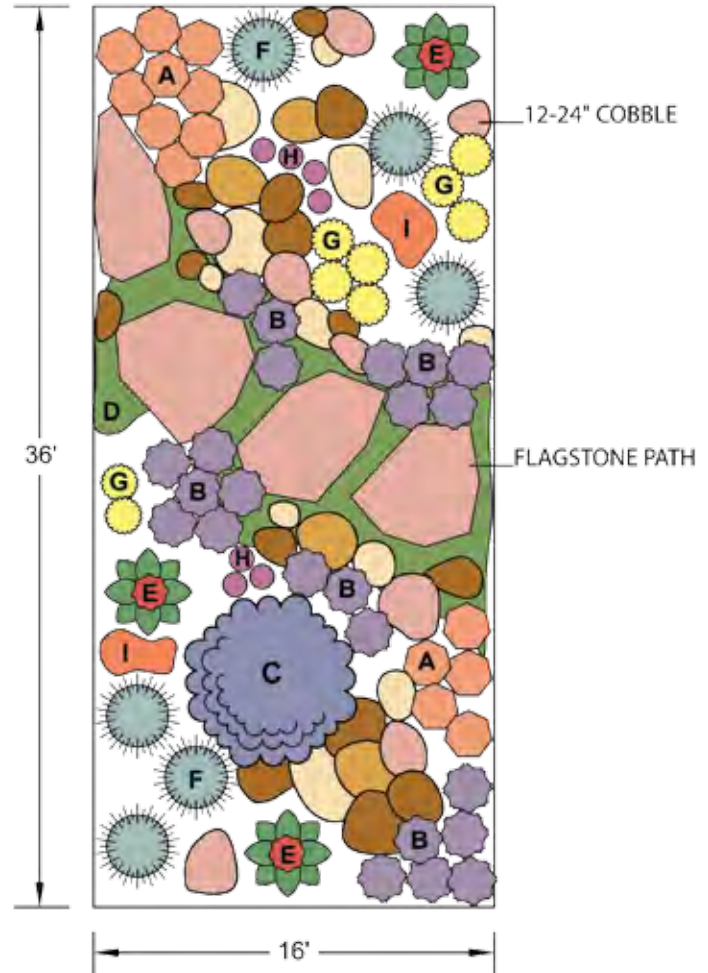
Fragrant Butterfly Walk

Plant List

- A. Sunset Hyssop, *Agastache rupestris* (14)
- B. Munstead Lavender, *Lavandula angustifolia* 'Munstead' (23)
- C. Silver Fountain Butterfly Bush, *Buddleia alternifolia* 'Argentea' (1)
- D. Creeping Elfin Thyme, *Thymus serpyllum* 'Elfin' (26)
- E. Red Yucca, *Hesperaloe parviflora* (3)
- F. Indian Grass, *Sorghastrum nutans* (6)
- G. Dwarf Sundrops, *Calylophus serrulatus* (9)
- H. Ornamental Onion, *Allium senescens* (7)
- I. Species Tulips for early spring, *Tulipa clusiana* var. *chrysantha*, *Tulipa linifolia*

Notes

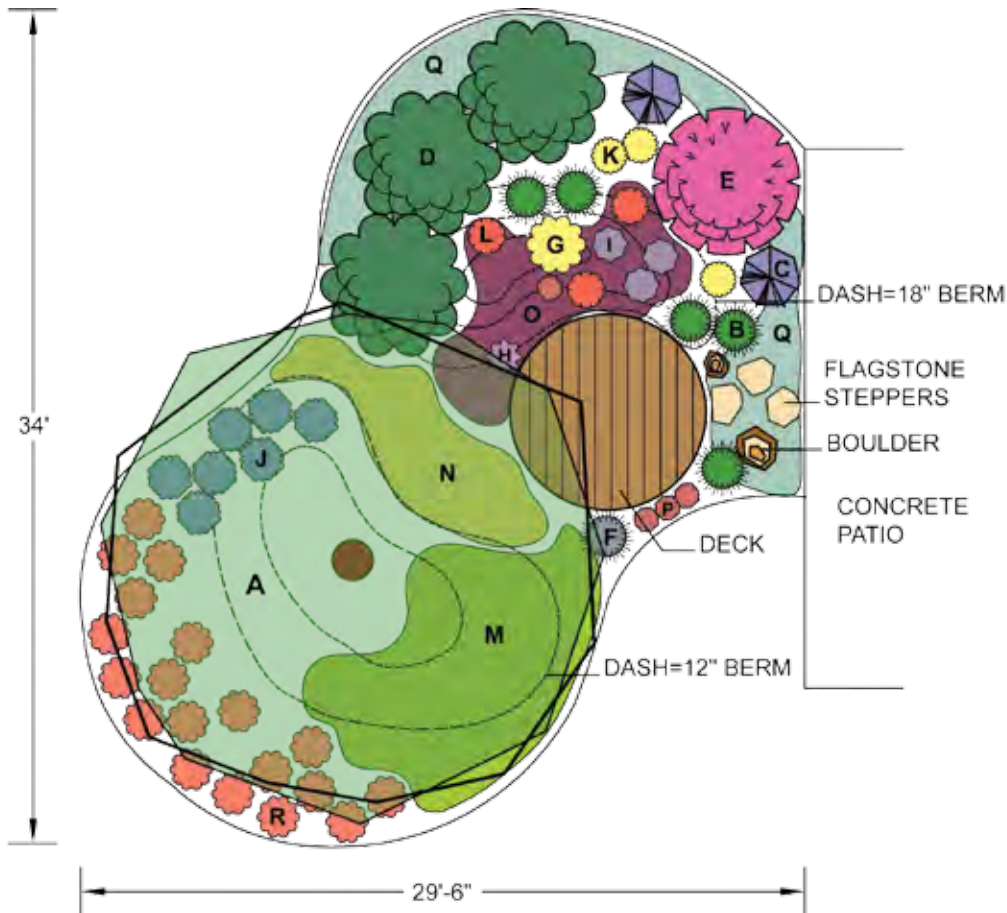
This garden can be used for the area in front of the house or an area off to the side. Best in a sunny site and needs low to no additional water after established.



Design

Joanie Schneider
 Sustainscapes by Joanie
 (970) 484-3948 office
 (970) 310-1841 cell
joanieschneider@yahoo.com
www.sustainscapes.com

Xeric Sensory Garden



Plant List

- A. Russian Hawthorn, *Crataegus ambigua* (1)
- B. Karl Foerster Grass, *Calamagrostis x acutiflora* 'Karl Foerster' (5)
- C. Longin Russian Sage, *Perovskia atriplicifolia* 'Longin' (2)
- D. Pawnee Buttes Sand Cherry, *Prunus besseyi* 'Pawnee Buttes' (3)
- E. Magnifica Rugosa Rose, *Rosa rugosa* 'Magnifica' (1)
- F. The Blues Little Bluestem, *Schizachyrium scoparium* 'The Blues' (1)
- G. Moonshine Yarrow, *Achillea* 'Moonshine' (1)
- H. Variegated Sweet Iris, *Iris pallida* 'Argentea Variegata' (1)
- I. Hidcote Lavender, *Lavandula angustifolia* 'Hidcote' (3)
- J. Blue Wonder Catmint, *Nepta x faassenii* 'Blue Wonder' (7)
- K. Silver Blade Evening Primrose, *Oenothera macrocarpa ssp. incana* 'Silver Blade' (3)
- L. Bridges Penstemon, *Penstemon rostriflorus* (3)
- M. Kamtschat Sedum, *Sedum kamtschaticum* (21)
- N. Angelina Sedum, *Sedum rupestre* 'Angelina' (15)
- O. Red Carpet Sedum, *Sedum spurium* 'Red Carpet' (13)
- P. Sunset Cloud Sedum, *Sedum* 'Sunset Cloud' (4)
- Q. Woolly Thyme, *Thymus pseudolanuinosus* (9)
- R. Orange Carpet Hummingbird Trumpet, *Zauschneria garrettii* 'Orange Carpet' (19)

Design

Zia Zybko
 Real Dirt Garden Design
 (970) 227-4440

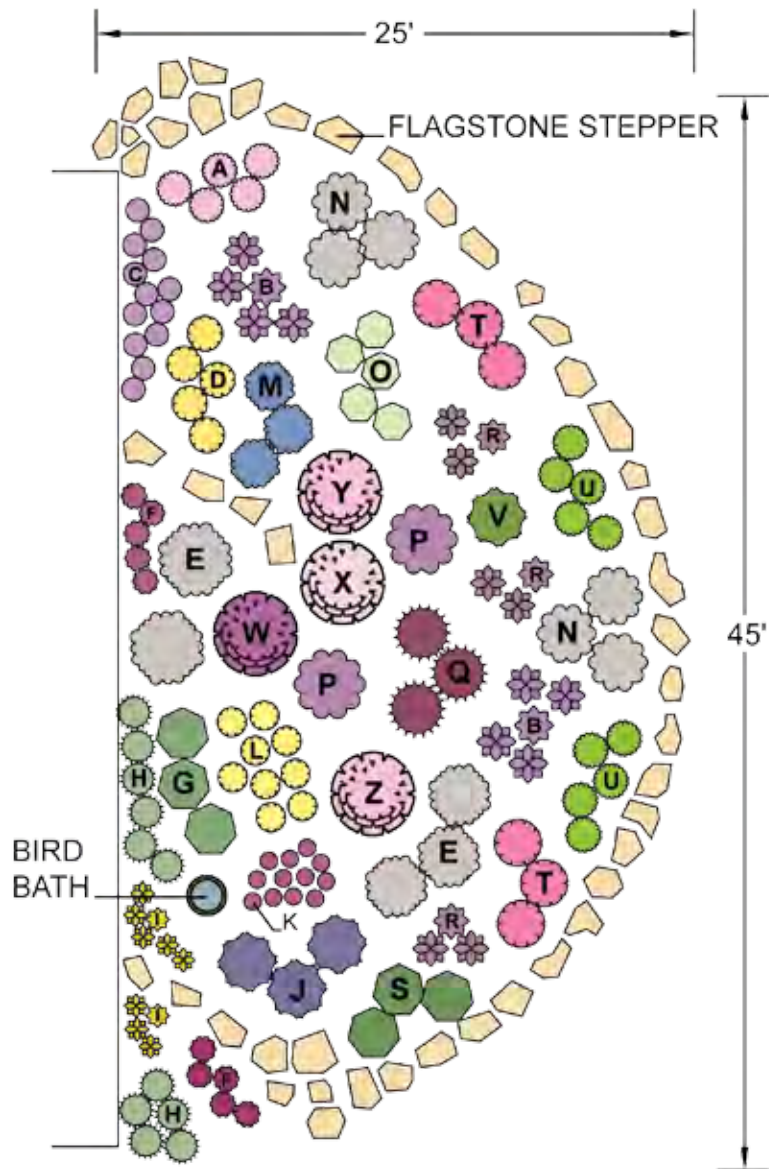
Fragrance Garden with Herbs and Roses

Plant List

- A. Fragrant Persian Stonecress, *Aethionema schistosum* (5)
- B. Variegated Sweet Iris, *Iris pallida* 'Variegata' (12)
- C. Ornamental Onion, *Allium karataviense* (13)
- D. Chocolate Flower, *Berlandiera lyrata* (5)
- E. Powis Castle Silver Sage, *Artemesia* 'Powis Castle' (5)
- F. Purple Winter Savory, *Satureja montana* ssp. *illyrica* (10)
- G. Garden Sage, *Salvia officinalis* 'Berggarten' (3)
- H. Garlic Chives, *Allium tuberosum* (11)
- I. Standard Dwarf Bearded Iris, yellow, *Iris hyb.* (10)
- J. Hidcote Lavender, *Lavandula angustifolia* 'Hidcote' (3)
- K. Drumstick Allium, *Allium sphaerocephalon* (12)
- L. Regal Lily, *Lilium regale* (9)
- M. Catmint, *Nepeta* 'Walker's Low' (3)
- N. Silver Sage, *Salvia argentea* (6)
- O. Virgo Feverfew, *Chrysanthemum parthenium*, 'Virgo' (5)
- P. Clary Sage, *Salvia sclarea* (2)
- Q. Bronze Fennel, *Foeniculum vulgare* 'Purpureum' (3)
- R. Persian Star Allium, *Allium christophii* (9)
- S. Creeping Germander, *Teucrium chamaedrys* (3)
- T. Aster, *Aster kumleinii* 'Dream of Beauty' (6)
- U. Lemon-scented Thyme, *Thymus citriodorus* 'Doone Valley' (10)
- V. French Tarragon, *Artemesia dracunculus* (1)
- W. Rose, *Rosa floribunda* 'Angel Face' (1)
- X. Rose, *Rosa damask* 'Mme. Hardy' (1)
- Y. Rose, *Rosa buck hyb.* 'Hawkeye Belle' (1)
- Z. Canadian Hardy Shrub Rose, *Rosa* 'Morden Blush' (1)

Design

Patricia Vaeth
Three Leaves
(970) 416-7457
pevaeth@earthlink.net



Rolling Shade Garden

Plant List

- A. Variegated Japanese Sedge, *Carex morrowii* 'Ice Dance' (8)
- B. Plum Pudding Coral Bells, *Heuchera* 'Plum Pudding' (8)
- C. Gold Splash Euonymus, *Euonymus* 'Gold Splash' (3)
- D. Rheinland Astilbe, *Astilbe x arendsii* 'Rheinland' (6)
- E. Patriot Plantain Lily, *Hosta* 'Patriot' (3)
- F. Annabelle Hydrangea, *Hydrangea aborescens* 'Annabelle' (2)
- G. Rubellum Monkshood, *Aconitum napellus* 'Rubellum' (6)
- H. Compact Oregon Grape Holly, *Mahonia aquifolium* 'Compacta' (3)
- I. Chocolate Chip Bugleweed, *Ajuga reptans* 'Chocolate Chip' (10)
- J. Taunton Yew, *Taxus x media* 'Tauton' (3)
- K. Auslese Lady's Mantle, *Alchemilla mollis* 'Auslese' (5)
- L. Carol Mackie Daphne, *Daphne x burwoodii* 'Carol Mackie' (3)
- M. White Nancy Spotted Deadnettle, *Lamium maculatum* 'White Nancy' (5)
- N. Kinnikinnik, *Arctostaphylos uva-ursi* (3)
- O. Denver Gold Columbine, *Aquilegia chrysantha* (5)
- P. Christmas Fern, *Polystichum acrostichoides* (3)
- Q. Arc En Ciel Cinquefoil, *Potentilla* 'Arc En Ciel' (3)
- R. Frontyard Linden, *Tilia americana* 'Bailyard' (1)

Design

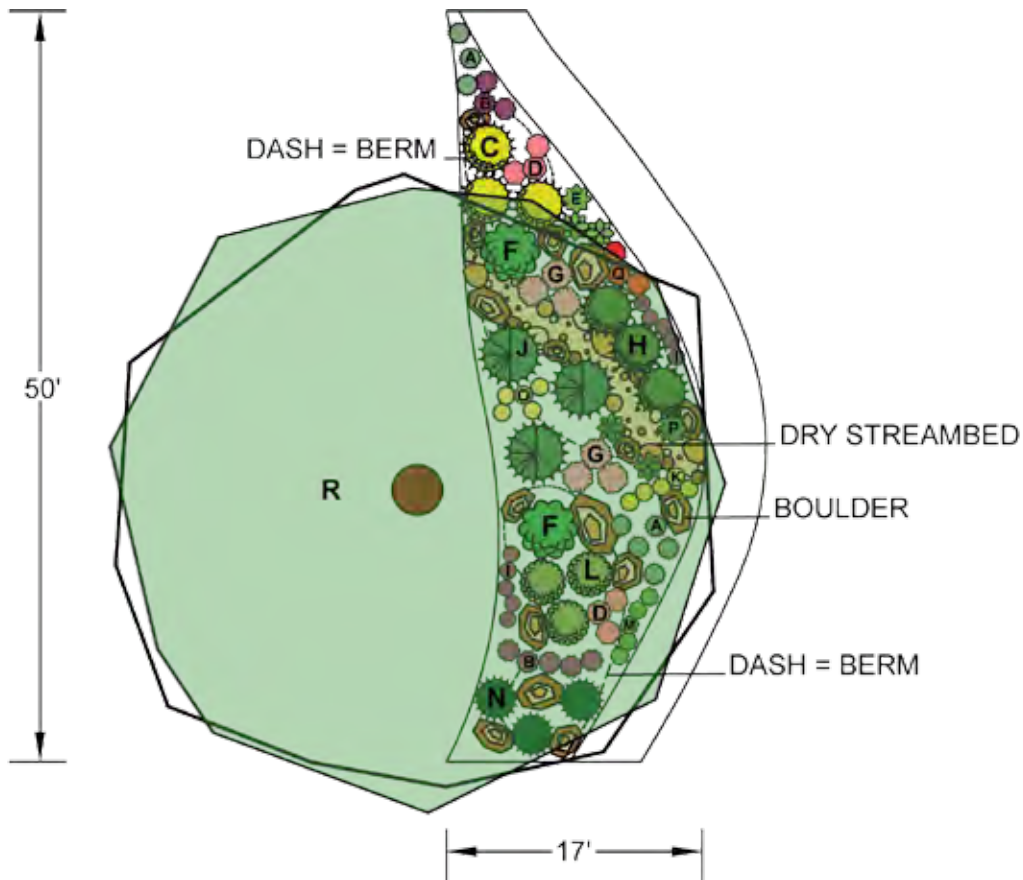
Tanya Fisher

Colorado Vista Landscape Design Inc.

(970) 231-3088

ColoradoVista@Comcast.net

www.coloradvista.com



Notes

This design is meant to be planted under an existing tree in partial to full shade.

A Shady Grove

Plant List

- A. Swamp White Oak, *Quercus bicolor* (3)
- B. Ponderosa Pine, *Pinus ponderosa* (3)
- C. Thimbleberry, *Rubus deliciosus* (3)
- D. Redleaf Rose, *Rosa glauca* (3)
- E. Hedge Cotoneaster, *Cotoneaster lucidus* (10)
- F. Wayfaring Tree, *Viburnum lantana* (3)
- G. Snowberry, *Symphoricarpos albus* (5)
- H. Golden Currant, *Ribes aureum* (3)
- I. Himalayan Fleece Flower, *Polygonum affine* (10)
- J. Blue Woolly Veronica, *Veronica pectinata* (18)
- K. Purple Nettle, *Lamium purpureum* (17)
- L. Kinnikinnick, *Arctostaphylos uva-ursi* (21)
- M. Coral Bells, *Heuchera sanguinea* (16)
- N. Dalmation Bellflower, *Campanula portenschlagiana* (10)
- O. Lady's Mantle, *Alchemilla mollis* (11)
- P. Rocky Mountain Columbine, *Aquilegia caerulea* (7)
- Q. Bluebells of Scotland, *Campanula rotundifolia* (17)
- R. Sweet Woodruff, *Gallium odoratum* (7)
- S. Perennial Forget-Me-Not, *Brunnera macrophylla* (13)
- T. Periwinkle, *Vinca minor* (9)
- U. Trumpet Vine, *Campsis radicans* (3)
- V. Beautiful Mint, *Calamintha grandiflora* (2- in containers)

Notes

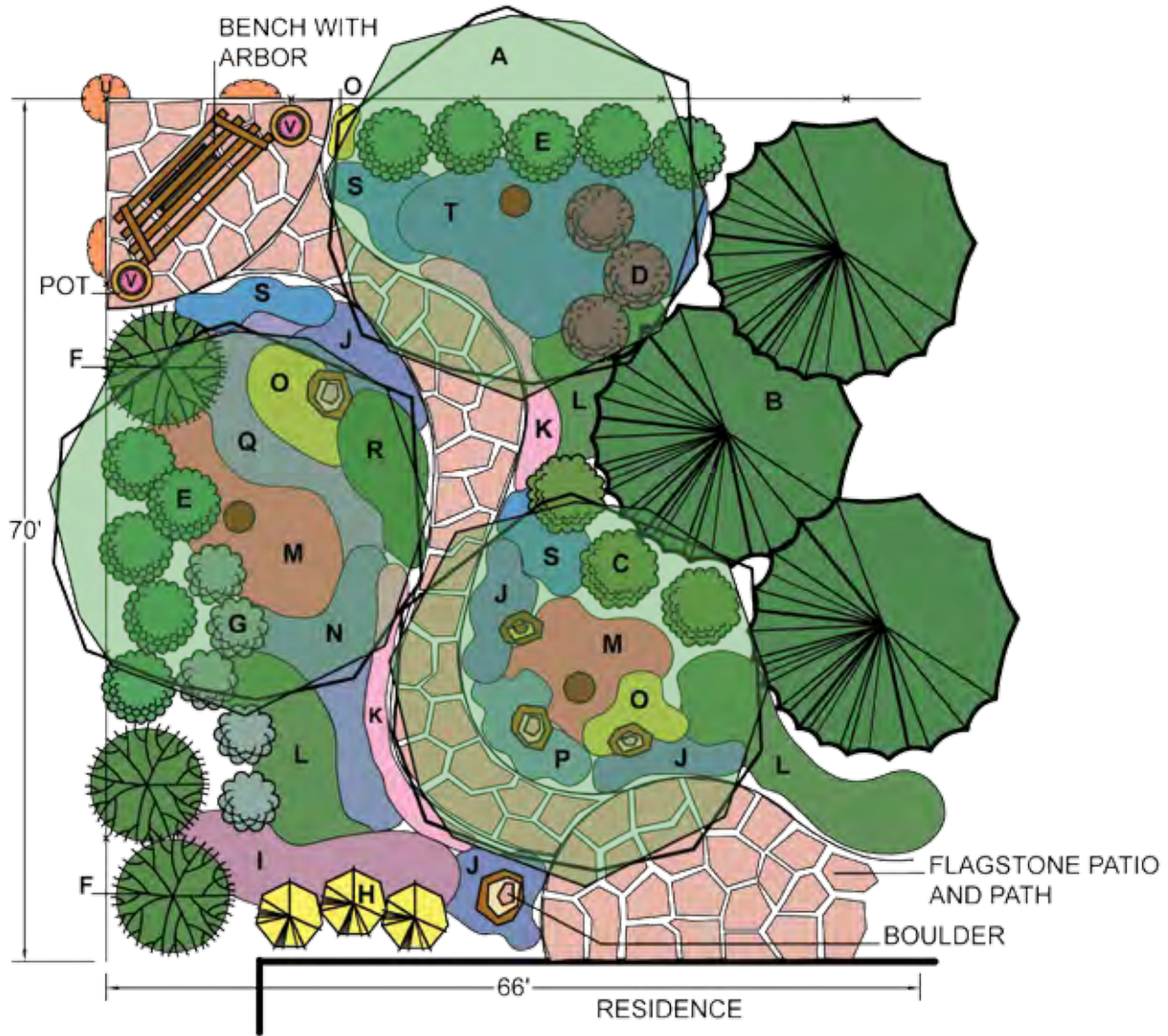
This design needs to be used in a shady backyard. The plants have low water, low maintenance and low light requirements with high color and seasonal interest. They are attractive to birds and butterflies.

Design

Nicole Davelis

Create A Scape: Sustainable Landscape
Design & Consultation

(970) 227-6394



A Walk in The Shade

Plant List

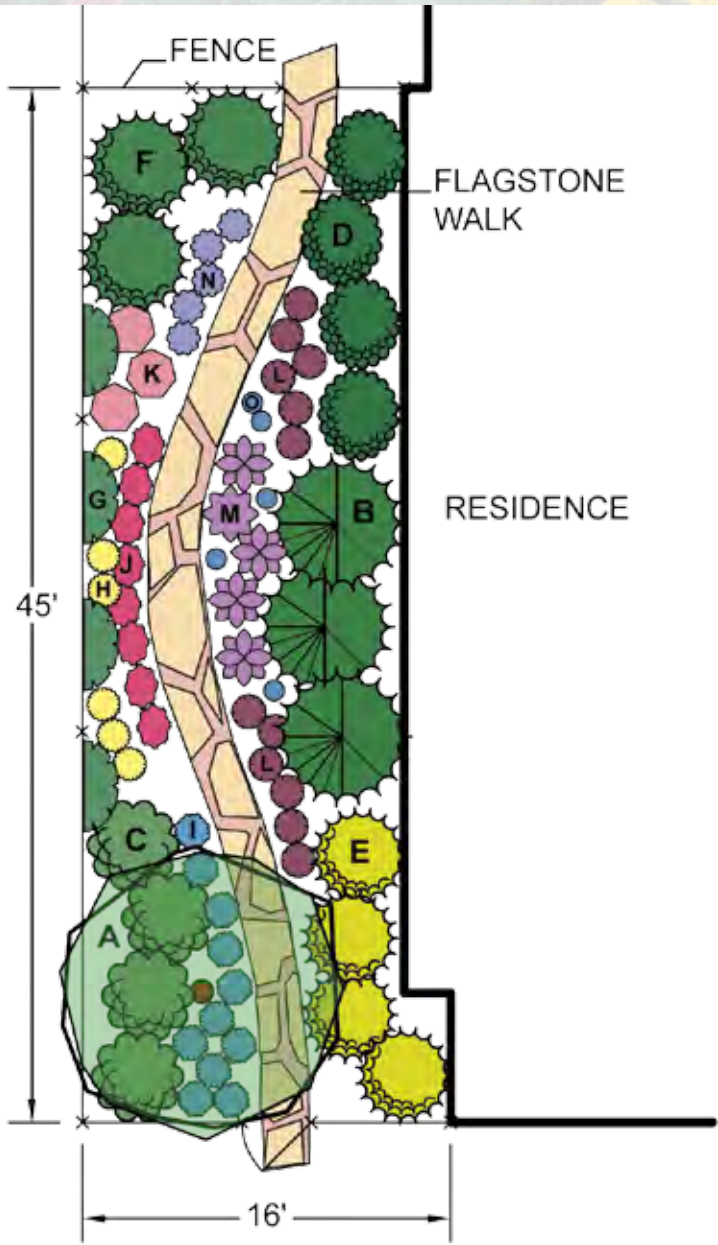
- A. Robin Hill Serviceberry, *Amelanchier x grandiflora* 'Robin Hill' (1)
- B. Dark Green Spreading Yew, *Taxus x media* 'Densiformis' (3)
- C. Annabelle Hydrangea, *Hydrangea arborescens* 'Annabelle' (4)
- D. Julia Jane Boxwood, *Buxus microphylla koreana* 'Julia Jane' (4)
- E. Canadale Gold Euonymus, *Euonymus fortunei* 'Canadale Gold' (4)
- F. Manhattan Euonymus, *Euonymus kiautschovicus* 'Manhattan' (3)
- G. English Ivy, *Hedera helix* (4)
- H. Denver Gold Columbine, *Aquilegia chrysantha* (6)
- I. Variegated Brunnera, *Brunnera macrophylla* 'Variegata' (11)
- J. Barrenwort, *Epimedium rubrum* (8)
- K. Chocolate Snakeroot, *Eupatorium rugosum* 'Chocolate' (3)
- L. Royal Heritage Helleborus, *Helleborus x hybridus* 'Royal Heritage' (12)
- M. Night Before Christmas Hosta, *Hosta* 'Night Before Christmas' (5)
- N. Stairway to Heaven Jacobs Ladder, *Polemonium* 'Stairway to Heaven' (5)
- O. Bowles Vinca, *Vinca minor* 'Bowles' (5)

Notes

Some of these plants need winter protection. In this particular plan, the plants were protected by the fence and house.

Design

Sharon Lockwood Landscape Designs
(970) 215-3596
www.lockwoodlandscapedesigns.com



Plant Select® Garden

Plant List

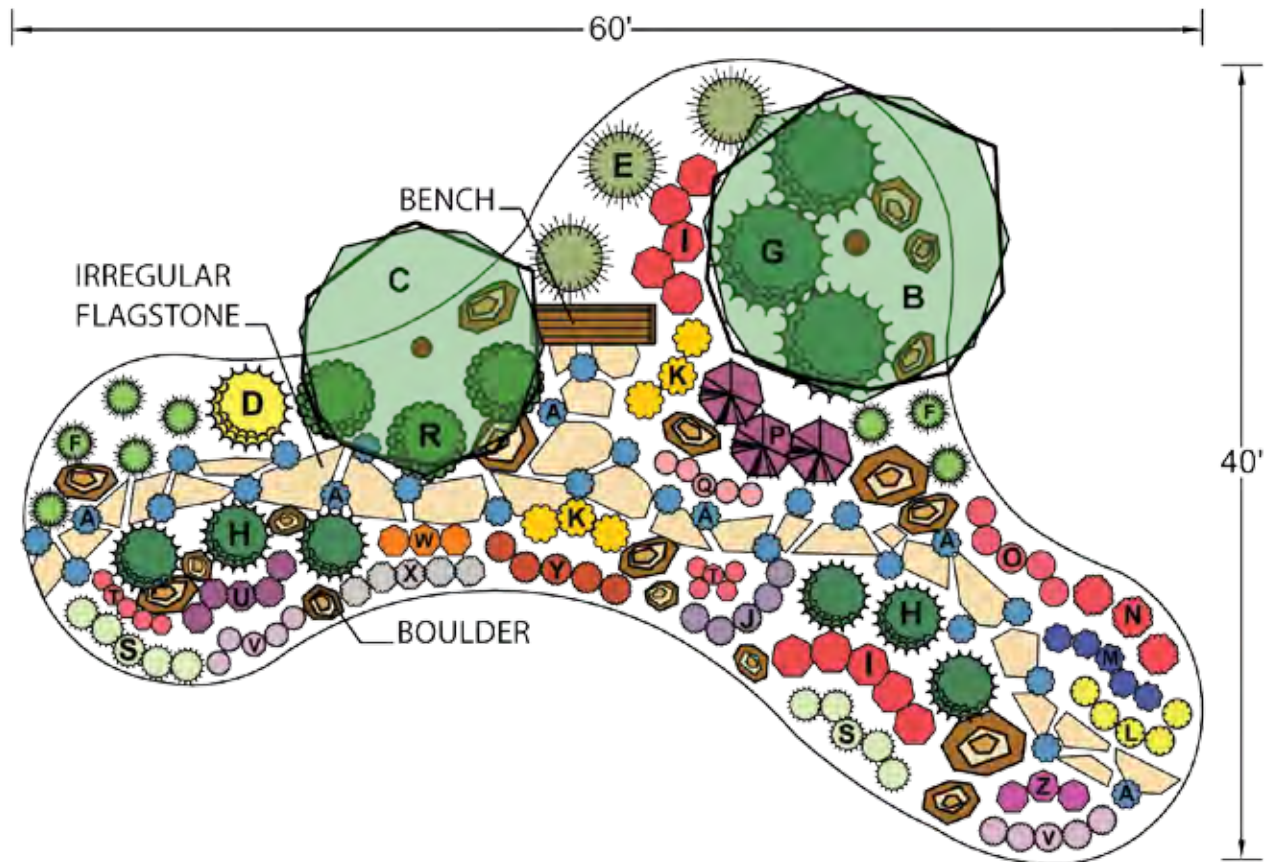
- A. Turkish Speedwell, *Veronica liwanensis* (3 to 4 flats)
- B. Hot Wings Tatarian Maple, *Acer tataricum* 'GarAnn' (1)
- C. Seven-Son Flower, *Heptacodium miconioides* (1)
- D. Spanish Gold Broom, *Cytisus purgans* (1)
- E. Giant Sacaton Grass Los Lunas form, *Sporobolus wrightii* (3)
- F. Korean Feather Reed Grass, *Calamagrostis brachytricha* (8)
- G. Mock Bearberry Manzanita, *Arctostaphylos x coloradoensis* 'Mock Bearberry' (3)
- H. Panchito Manzanita, *Arctostaphylos x coloradoensis* 'Panchito' (6)
- I. Red Birds in a Tree, *Scrophularia macrantha* (10)
- J. Valley Lavender Plains Verbena, *Verbena bipinnatifida* (5)
- K. Denver Daisy Rudbeckia, *Rudbeckia* 'Denver Daisy' (6)
- L. Silver Blade Evening Primrose, *Oenothera macrocarpa ssp. incana* 'Silver Blade' (5)
- M. Platinum Sage, *Salvia daghestanica* (5)
- N. Bridges Penstemon, *Penstemon rostriflorus* (3)
- O. First Love Dianthus, *Dianthus* 'First Love' (5)
- P. Mojave Sage, *Salvia pachyphylla* (3)
- Q. Alpine Willowherb, *Epilobium fleischeri* (5)
- R. Carol Mackie Daphne, *Daphne x burkwoodii* 'Carol Mackie'
- S. Snowmass Phlox, *Phlox bifida* (10)
- T. Coral Canyon Twinspur, *Diascia integerrima* (10)
- U. Pikes Peak Purple Penstemon, *Penstemon x mexicali* (5)
- V. Hardy Lavender Ice Plant, *Delosperma* 'Psfave' (10)
- W. Coronado Hyssop, *Agastache aurantiaca* (3)
- X. Sea Foam Artemisia, *Artemisia versicolor* 'Sea Foam' (5)
- Y. Red Mountain Ice Plant, *Delosperma dyeri* 'Psdold' (5)
- Z. Sonoran Sunset Hyssop, *Agastache cana* 'Sinning' (3)

Design

Tanya Fisher

Colorado Vista Landscape Design Inc.
(970) 231-3088

ColoradoVista@comcast.net
www.coloradovista.com



Notes

This design performs best in full sun to part shade. All the plants used are Plant Select® varieties that perform well in our region. Plant Select is a cooperative program between Denver Botanic Gardens, Colorado State University, and horticulturists and nurseries. Find out more at www.plantselect.org.

Lauren Springer Slope Garden

Plant List

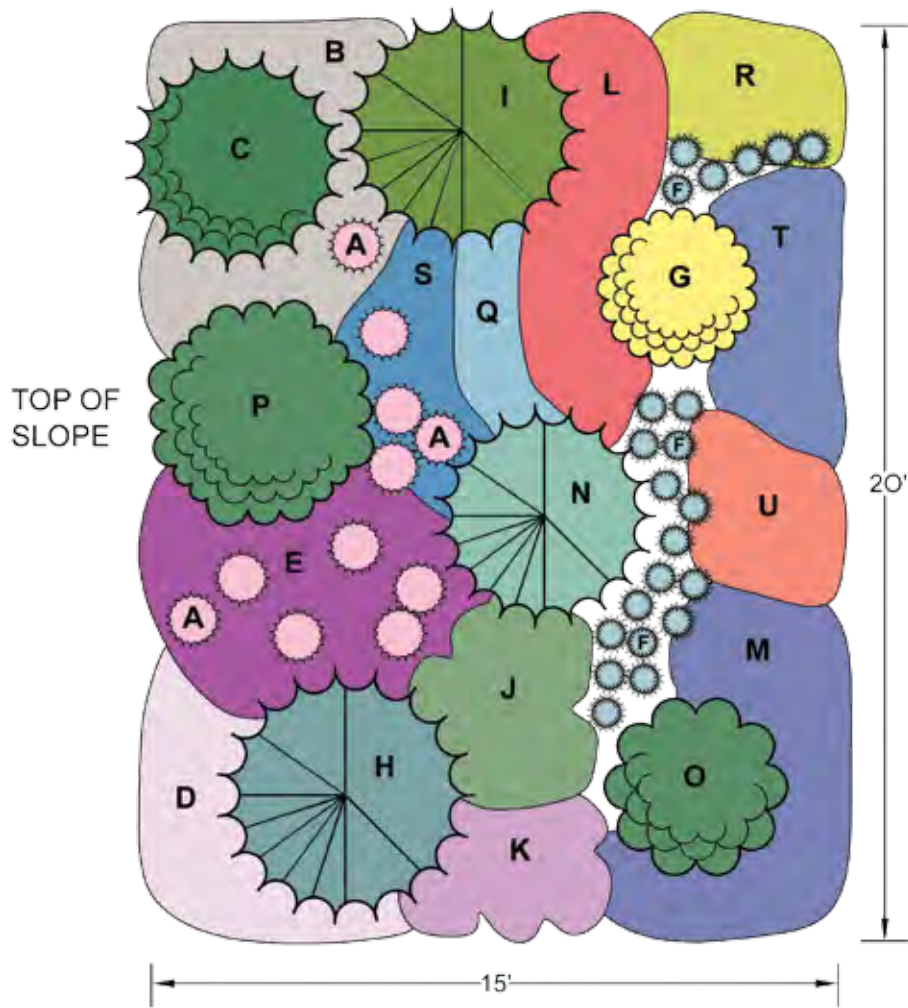
- A. Spikethrift, *Acantholimon* sp. (11)
- B. Pussytoes, *Antennaria parviflora* (24)
- C. Mock Bearberry Manzanita, *Arctostaphylos x coloradoensis* 'Mock Bearberry' (1)
- D. Hardy Lavender Iceplant, *Delosperma* 'Psfave' (18)
- E. Hardy Pink Iceplant, *Delosperma* 'Table Mountain' (24)
- F. Rocky Mountain Blue Fescue, *Festuca idahoensis* 'Siskiyou Blue' (22)
- G. Lydia Woadwaxen, *Genista lydia* (1)
- H. Juniper, *Juniperus* sp. 'Blue Creeper' or 'Holden Arboretum' (1)
- I. Juniper, *Juniperus* sp. 'Calgary Carpet' or 'Prince of Wales' (1)
- J. Round-leaf Horehound, *Marrubium rotundifolium* (5)
- K. Hopflower Oregano, *Origanum libanoticum* (5)
- L. Pine-leaf Beardtongue, *Penstemon pinifolius* (24)
- M. Cushion Phlox, *Phlox subulata* 'Emerald Blue' (16)
- N. Prostrate Colorado Spruce, *Picea pungens* 'Mesa Verde' (1)
- O. Pawnee Buttes Sand Cherry, *Prunus besseyi* 'Pawnee Buttes' (1)
- P. Prostrate Three-leaf Sumac, *Rhus trilobata* 'Autumn Amber' (1)
- Q. Blue Spruce Sedum, *Sedum reflexum* (7)
- R. Angelina Sedum, *Sedum rupestre* 'Angelina' (9)
- S. Turkish Veronica, *Veronica liwanensis* (10)
- T. Woolly Veronica, *Veronica pectinata* (10)
- U. Orange Carpet Hummingbird Trumpet, *Zauschneria garrettii* 'Orange Carpet' (10)

Notes

This design works for east, west or south-facing slopes in full sun. It's adapted to unamended soil and clay. Needs 3" supplemental water per month (rain or irrigation) from May to October. Use pea gravel mulch 1" deep if the slope isn't too steep. The recommended watering system includes seven 20-foot lengths of soaker hose under mulch held in place with wire pins. For areas larger than 20' X 15', repeat favorite combinations of groundcover and shrubs.

Design

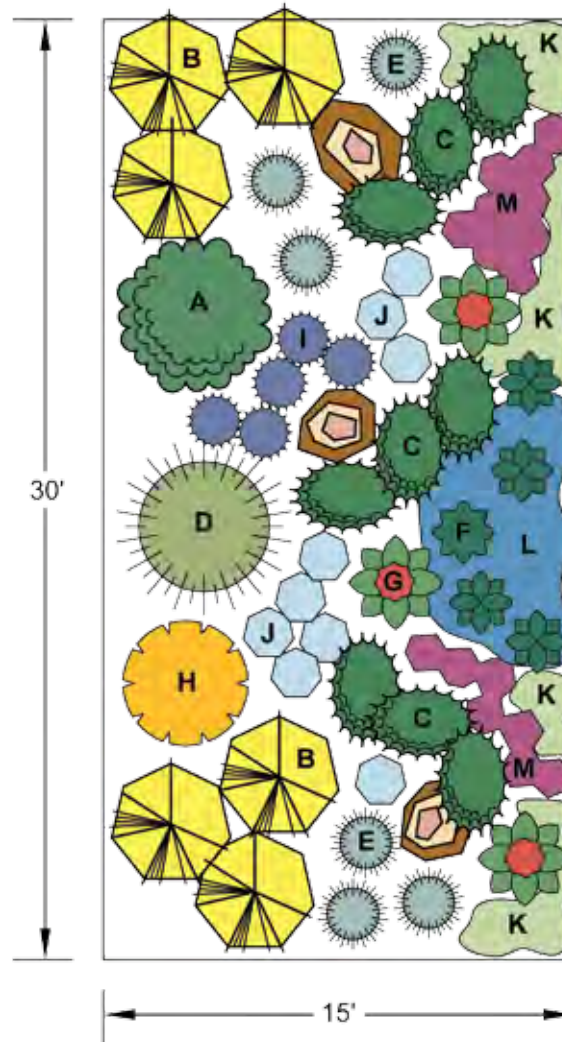
© 2008 Lauren S. Ogden
www.plantdrivendesign.com



Southwest Zingo

Plant List

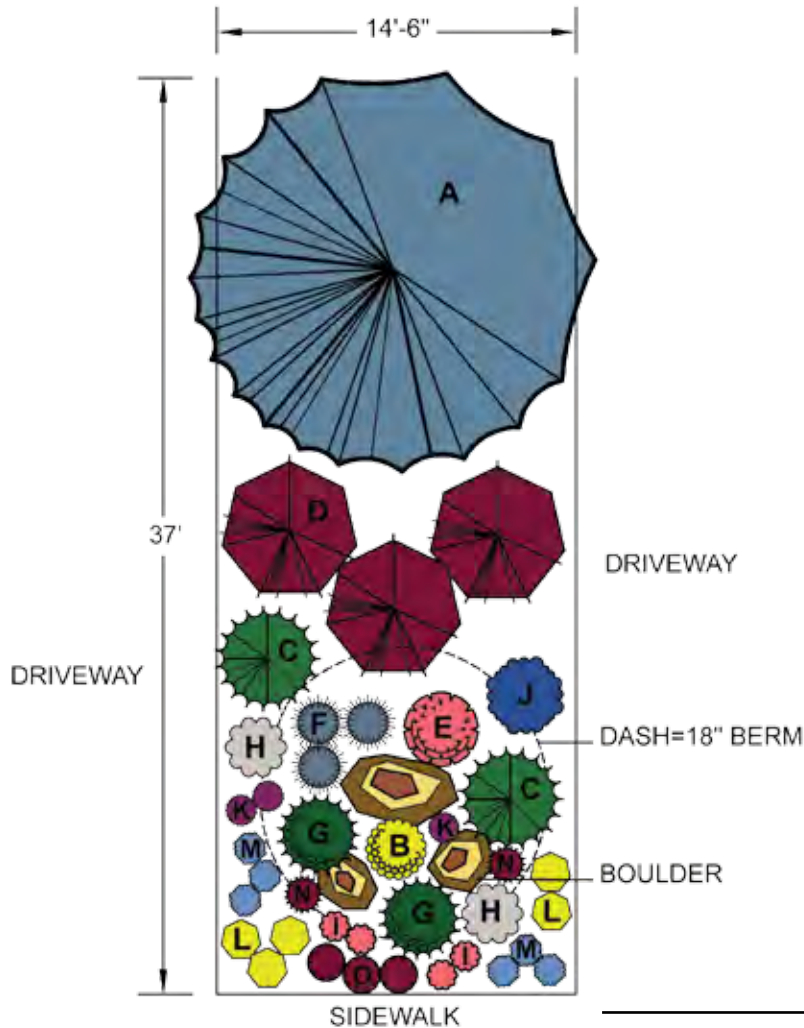
- A. Three Leaf Sumac, *Rhus trilobata* (1)
- B. Crandall Clove Currant, *Ribes odoratum* 'Crandall' (6)
- C. Panchito Manzanita, *Arctostaphylos x coloradoensis* 'Panchito' (9)
- D. Giant Sacaton Grass Los Lunas form, *Sporobolus wrightii* (1)
- E. Heavy Metal Switchgrass, *Panicum virgatum* 'Heavy Metal' (6)
- F. Parry's Century Plant, *Agave parryi* (5)
- G. Red Yucca, *Hesperaloe parviflora* (3)
- H. Maximillian Sunflower, *Helianthus maximilliani* (1)
- I. Blue Glow Globe Thistle, *Echinops banaticus* 'Blue Glow' (5)
- J. Pitcher Sage, *Salvia azurea var. grandiflora* (9)
- K. Silver Edged Horehound, *Marrubium rotundifolium* (24)
- L. Turkish Veronica, *Veronica liwanensis* (18)
- M. Bulbs: (combine varieties for blooming from spring to fall)
 - Allium cernuum* (18)
 - Allium azureum* (18)
 - Allium aflatunense* (18)
 - Allium schubertii* (18)



Design

Christine Ginnity
 (970) 301-3819
christinegreenwood@hotmail.com

Inferno Strip



Plant List

- A. Existing tree
- B. Lydia Woadwaxen, *Genista lydia* (1)
- C. Mops Mugo Pine, *Pinus mugo* 'Mops' (2)
- D. Summer Wine Ninebark, *Physocarpus opulifolius* 'Summer Wine' (3)
- E. Sunrise Sunset Rose, *Rosa* 'Sunrise Sunset' (1)
- F. The Blues Little Bluestem, *Schizachyrium scoparium* 'The Blues' (3)
- G. Ponchito Manzanita, *Arctostaphylos x coloradoensis* 'Ponchito' (2)
- H. Sea Spray Sage, *Artemisia versicolor* (2)
- I. Coral Canyon Twinspur, *Diascia integerrima* 'Coral Canyon' (4)
- J. Select Blue Catmint, *Nepeta x faassenii* 'Select Blue' (1)
- K. Pikes Peak Purple Penstemon, *Penstemon x mexicali* 'Pikes Peak Purple' (3)
- L. Yellow Pineleaf Penstemon, *Penstemon pinifolius* 'Mersea Yellow' (6)
- M. Butterfly Blue Scabiosa, *Scabiosa columbaria* 'Butterfly Blue' (6)
- N. Red Hens and Chicks, *Sempervivum rubrum* (2)
- O. Red Carpet Sedum, *Sedum spurium* 'Red Carpet' (3)

Design

Loretta Mannix
 The Horticulture Consultant
 (970) 407-8695
lmannix@frii.com
www.thehortconsult.com

Dry Creek Bed Oasis

Plant List

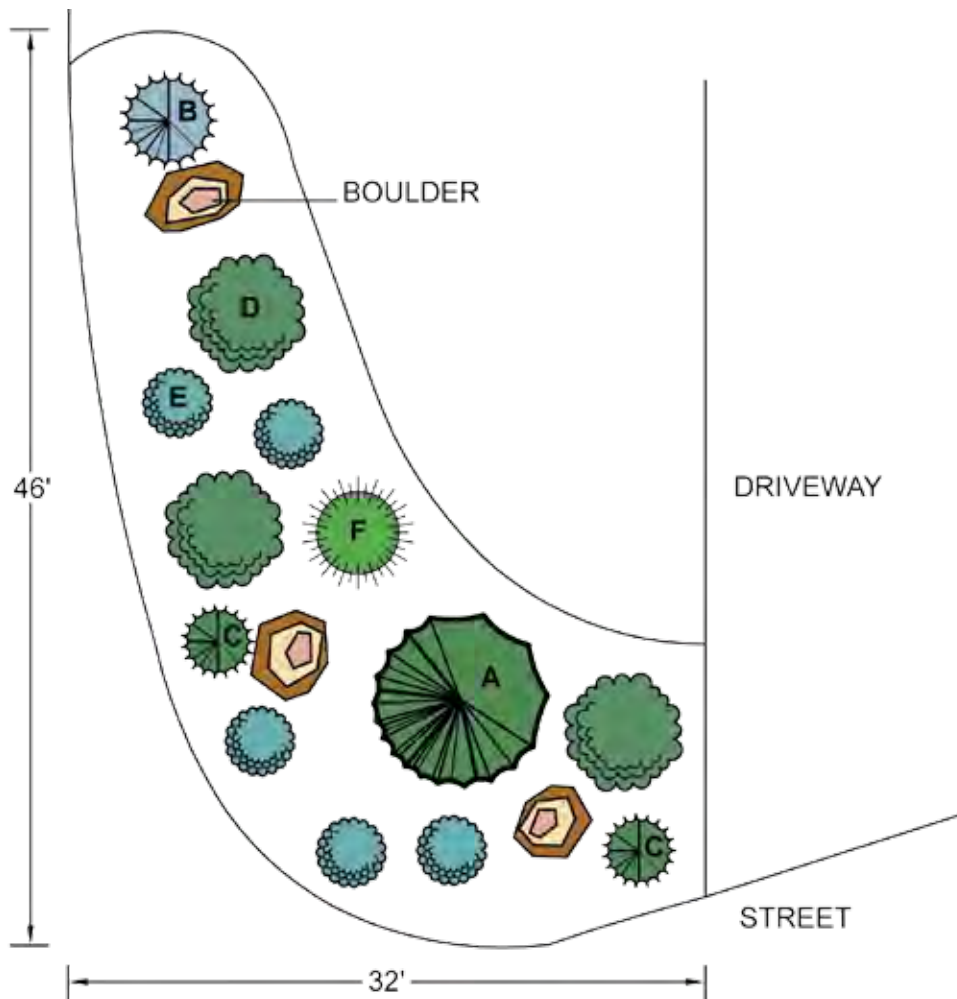
- A. Autumn Brilliance Serviceberry, *Amelanchier x grandiflora* 'Autumn Brilliance' (1)
- B. Vanderwolf's Limber Pine, *Pinus flexilis* 'Vanderwolf's' (1)
- C. Black Chokeberry, *Aronia melanocarpa* (3)
- D. Blue Mist Spirea, *Caryopteris clandanensis* (5)
- E. Spanish Gold Broom, *Cytisus purgans* 'Spanish Gold' (1)
- F. Blue Oat Grass, *Helictotrichon sempervirens* (4)
- G. Compact Oregon Grape Holly, *Mahonia aquifolium* 'Compacta' (3)
- H. Mountain Ninebark, *Physocarpus monogynus* (3)
- I. Sunrise Sunset Rose, *Rosa* 'Sunrise Sunset' (3)
- J. Daphne Spirea, *Spiraea japonica alpina* (3)
- K. Sonoran Sunset Hyssop, *Agastache cana* 'Sonoran Sunset' (3)
- L. Sea Spray Sage, *Artemisia versicolor* (3)
- M. Variegated Brunnera, *Brunnera macrophylla* 'Variegata' (5)
- O. Yellow Ice Plant, *Delosperma nubigenum* (6)
- P. Variagated Sweet Iris, *Iris pallida* 'Argentea variegata' (6)



Design

Loretta Mannix
 The Horticulture Consultant
 (970) 407-8695
lmannix@frii.com
www.thehortconsult.com

Curbside Cul-de-Sac



Plant List

- A. Bosnian Pine, *Pinus heldrichi* var. *leucodermis* (1)
- B. St. Mary's Broom Dwarf Blue Spruce, *Picea pungens* 'St. Mary's Broom' (1)
- C. Mops Mugo Pine, *Pinus mugo* 'Mops' (2)
- D. Gro-Low Sumac, *Rhus aromatica* 'Gro-Low' (3)
- E. Dwarf Blue Rabbitbrush, *Chrysothamnus nauseosus nauseosus* (5)
- F. Hardy Pampas Grass, *Erianthus ravennae* (1)

Design

Connie Barber

Barber Landscape Design

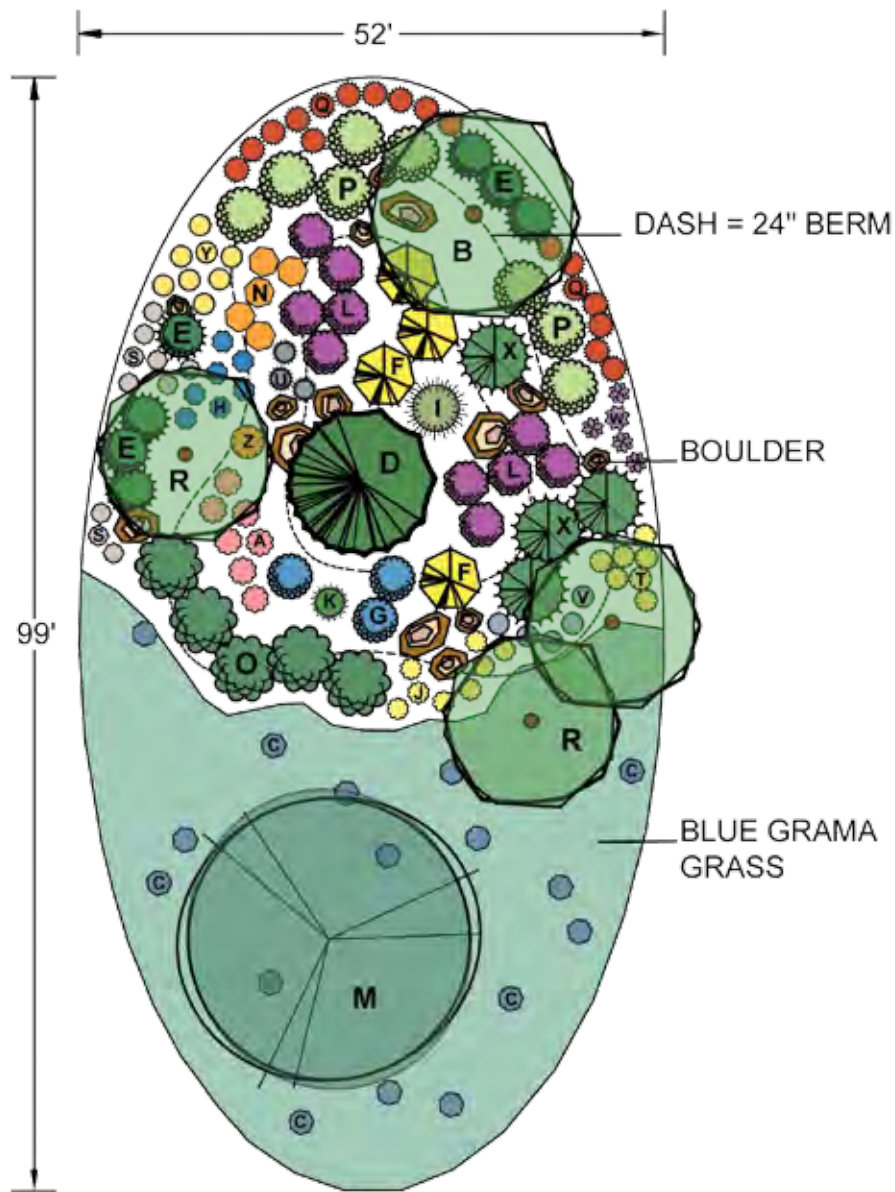
(970) 215-8521

barberlandscape@hotmail.com

Driveway Turn-Around Oval

Plant List

- A. Autumn Fire Sedum, *Sedum* 'Autumn Fire' (7)
- B. Bigtooth Maple, *Acer grandidentatum* (1)
- C. Blue Flax, *Linum lewisii* (17)
- D. Bristlecone Pine, *Pinus aristata* (1)
- E. Cascade Manzanita, *Arctostaphylos x coloradoensis* 'Cascade' (7)
- F. Crandall Clove Currant, *Ribes odoratum* 'Crandall' (4)
- G. Dark Knight Blue Mist Spirea, *Caryopteris x clandonensis* 'Dark Knight' (3)
- H. Electric Blue Beardtongue, *Penstemon heterophyllus* 'Electric Blue' (7)
- I. Giant Sacaton Grass Los Lunas form, *Sporobolus wrightii* (1)
- J. Kannah Creek Sulphur Flower, *Eriogonum umbellatum* 'Kannah Creek' (8)
- K. Karley Rose Grass, *Pennisetum orientale* 'Karley Rose' (1)
- L. Leadplant, *Amorpha canescens* (10)
- M. Northern Catalpa, *Catalpa speciosa* (1)
- N. Orange Butterfly Weed, *Asclepias tuberosa* (5)
- O. Pawnee Buttes Sand Cherry, *Prunus bessyi* 'Pawnee Buttes' (5)
- P. Prairie Snow Potentilla, *Potentilla fruticosa* var. 'davuria' (8)
- Q. Red Mountain Ice Plant, *Delosperma dyeri* 'Psdold' (18)
- R. Russian Hawthorn, *Crataegus ambigua* (3)
- S. Serbian Yellow, *Achillea serbica* (10)
- T. Silver Blade Evening Primrose, *Oenothera macrocarpa* v. *incana* 'Silver Blade' (7)
- U. The Blues Little Bluestem, *Schizachyrium scoparium* 'The Blues' (3)
- V. Thousand Flowered Aster, *Calamintha nepeta* spp. *nepeta* (5)
- W. Gold Variegated Sweet Iris, *Iris pallida* 'Aureo Variegata' (5)
- X. Whitebud Mugo Pine, *Pinus mugo* 'Whitebud' (4)
- Y. Yellow Pineleaf Penstemon, *Penstemon pinifolius* 'Mersea Yellow' (8)
- Z. Sunset Hyssop, *Agastache rupestris* (1)





Fort Collins Conserves. It's Our Style.

fcgov.com/utilities • utilities@fcgov.com • (970) 221-6700 • TDD (970) 224-6003