

POTATO VARIETY CATALOGUE



**National Potato
Council of Kenya**

2015



Syngenta Potato Solution

First Emergence	Early Rosette	Rapid Canopy	Flowering	Canopy Complete	Desiccation					
Weeks	3	4	5	6	7	8	9	10	11	12
Indication										
Early & Late Blight										
Soil borne pests										
Leaf miner/mites										

Product	Rate/20Ltr Knapsack	Spray Interval (Days)	Pre-Harvest Interval - (PHI) (Days)	Remarks
Daconil	80ml	7	14	Maximum of 3 sprays per season
Ridomil Gold	50g	7	7	Maximum of 3 sprays per season
Revus	20ml	7	7	Maximum of 3 sprays per season
Dynamec	10ml	7	3	Do scouting then spray at onset of pest infestation
Match	25ml	7	14	Do scouting then spray at onset of pest infestation
Actara	8g	7	7	Do scouting then spray at onset of pest infestation

Contact us on: Mobile: +254 703018000, Email: syngenta.east_africa@syngenta.com, SMS 22432

syngenta[®]

TABLE OF CONTENTS

NATIONAL POTATO COUNCIL OF KENYA.....	1
NPCK MEMBERSHIP	1
FOREWORD.....	2
HOW TO USE THIS CATALOGUE	4
VARIETY CHARACTERISTICS.....	4
CERTIFIED SEED PRODUCTION IN KENYA	5
ECOLOGICAL REQUIREMENTS.....	5
AMBITION	9
ANNET	11
ARIZONA.....	12
ARNOVA.....	14
ASANTE	15
CARUSO.....	16
CONNECT	18
DERBY	19
DESIREE	20
DESTINY.....	21
DUTCH ROBIJN.....	23
EL-MUNDO	24
FALUKA.....	25

JELLY	27
KENYA BARAKA.....	28
KENYA KARIBU	29
KENYA MAVUNO.....	30
KENYA MPYA	31
KENYA SIFA	32
KERR'S PINK.....	33
MANITOU	34
MARKIES	35
MAYAN GOLD	36
MUSICA	37
PURPLE GOLD.....	38
ROYAL	39
RUMBA	40
RUDOLPH	41
SAGITTA	42
SARPO MIRA.....	43
SAVIOLA	44
SHANGI.....	45
SHEREKEA	46
TAURUS	47
TIGONI	48
TOLUCA	49

NATIONAL POTATO COUNCIL OF KENYA

The National Potato Council of Kenya (NPCK) is a multi-stakeholder organization tasked with organizing and coordinating the activities of the potato sub-sector with an aim of transforming it into a robust, competitive, and self-regulating industry.

The NPCK works closely with stakeholders in the potato sub-sector in identifying sub-sector challenges and coming up with necessary interventions to address them. The following are some of the initiatives recently or currently being undertaken by the NPCK in collaboration with key stakeholders in the industry:

- ❖ Up-scaling of Seed potato innovations
- ❖ Enhancing adoption of harmonized seeds standards, regulations, and procedures in East and Central Africa (ECA)
- ❖ On-Farm evaluation and promotion of low-cost seed potato storage
- ❖ Development and distribution of seed and ware potato production manuals
- ❖ Developed a Policy makers' guide to crop diversification: Case of potato production in Kenya
- ❖ Organized and co-hosted the 9th Triennial African Potato Association Conference
- ❖ Working and collaborating with National and County Governments in:
 - developing and implementing National and County Potato development strategies
 - eradicating extended packaging bags in potato marketing

NPCK MEMBERSHIP

Membership of NPCK is based upon the number of stakeholders in the potato industry. This may include but not limited to, individual farmers, farmer groups/associations, processing companies, franchise, and main market outlets among many others.

To be a member of the NPCK, log in to our website www.npck.org and find the membership details.

FOREWORD

The potato (*Solanum tuberosum*) is an important staple and cash crop in Kenya and occupies a prime position in terms of contribution to food security, poverty eradication, and economic development. The importance of potato continues to rise over time due to increased urbanization and consequently increased uptake of processed potato products such as crisps and chips. However, potatoes consumed in Kenya are mainly boiled, roasted, fried, mashed, eaten in stews, or mixed with foods such as maize and beans.

Current potato yields are below 10t/ha against a potential of 40t/ha, that is achievable under good agronomic practices. Use of poor quality seed, poor crop husbandry and lack of suitable varieties for upper-end market is generally believed to be the main reason for the low potato yields and low incomes for Kenyan potato farmers. There is low use of high quality seed with use of certified seed potatoes hardly exceeding 2%.

In the recent past there has been several initiatives aimed at increasing availability of certified seed potato, high yielding varieties that are suitable for processing and heat tolerant varieties. Consequently, there are increased number of seed producers and released potato varieties.

This Potato Variety Catalogue is therefore an initiative aimed at enhancing awareness about the released varieties and helping create linkages between the seed growers and ware potato producers. It provides a description of potato varieties commonly grown in Kenya, including the recently released varieties.

This catalogue has been developed through a joint effort of National Potato Council of Kenya (NPCK); Kenya Agricultural and Livestock Research Organization (KALRO - NPRC); Ministry of Agriculture Livestock and Fisheries (MoALF); International Potato Center (CIP); Kenya plant Health Inspectorate Services (KEPHIS); Kenya National Potato Farmers' Association (KENAPOFA); Kenya - Netherlands seed potato development project; International Fertilizer Development Centre (IFDC); Syngenta East Africa Company and Syngenta Foundation for Sustainable Agriculture.

It is hoped that the catalogue will contribute to having more farmers gaining direct access to disease free and quality seed thus enhancing the competitiveness of the potato sub-sector, in line with the food security aspirations of UN Sustainable Development Goals (SDGs), Vision 2030 and Agricultural Sector Development Strategy (2009 - 2020)

Wachira Kaguongo
Chief Executive Officer,
National Potato Council of Kenya

KEY PARTNERS



Kingdom of the Netherlands



syngenta®

syngenta foundation
for sustainable
agriculture

HOW TO USE THIS CATALOGUE

This catalogue describes 36 varieties registered by KEPHIS. It specifies agricultural and plant characteristics of each variety, accompanied by an illustration of the plant flower, the tuber, cut open tuber, and sprout. Contact details for some institutions in the sector have been included at the end of this catalogue.

To find the variety of your interest go to the variety description and read the characteristics to determine the best one for your region. The contact details of the seed merchants and others who offer the variety of your choice can be found in Table 2.

You are highly advised to consider your target market while choosing the variety you intend to grow.

VARIETY CHARACTERISTICS

The following agricultural characteristics are specified for each variety:

- Tuber features (shape, size, colour of the skin and flesh, depth of the eyes)
- Maturity i.e. how long it takes to mature
- Yield (of a mature crop)
- Resistance to pests and diseases e.g. potato leaf roll virus (PLRV) late blight
- Tuber dormancy
- Use (e.g. chipping, crisping, boiling, mashing quality)
- Altitude range
- Sprout features (colour, shape)
- Dry matter content
- Plant characteristics (flower colour)

CERTIFIED SEED PRODUCTION IN KENYA

Certified seed potatoes are grown by different merchants and out growers located in different parts of the country. Currently, certification procedures are solely done by KEPHIS. The seeds produced may be available at varying quantities depending on the number of growers meeting the conditions at any particular season.

ECOLOGICAL REQUIREMENTS

Suitable temperature: Mean Temp (°C) (15-24)

Suitable rainfall: Mean Rainfall (mm) 1200-1800mm

Potato growing areas: There are 13 established major potato producing counties these include: Meru, Nyeri, Nyandarua, Kiambu, Taita-Taveta, Nakuru, Narok, Bomet, Elgeiyo-Marakwet, Trans-Nzoia, Bungoma, Uasin-Gishu, West Pokot; 7 emerging producing counties which include Kisii, Nyamira, Baringo, Nandi, Kirinyaga, Kericho and Laikipia; other minor but potential potato producing counties (mainly in the hilly areas include Machakos, Makueni, Embu, Kajiado, Tharaka Nithi, Samburu, Kwale, and Nairobi.

Soil types: Ideal soils for potatoes vary within the counties but usually loam soils (silt loam; clay loam with adequate organic content, well-draining to light soils) are suitable. Suitable soil pH value ranges from 5.5 - 7.0. Ideal soil pH value is 5.5.

Note: Not all varieties perform equally and performance may vary in different counties; hence, farmers need to try small units before full scale production of any variety.

Table 1: Summary table for potato varieties

VARIETY	TUBER CHARACTERISTICS			MATURITY	DISEASE RESISTANCE			TUBER DORMANCY	USAGE						YIELD	ALTITUDE RANGE	
	SKIN COLOUR	FLESH COLOUR	EYE DEPTH		L. BLIGHT	PVY	PLRV		CRISPS	CHIPS	MASH	ROAST	BOILED	BAKING			
AMBITION	W	W	S	••••				*		✓	✓	✓	✓	✓	✓	✓	1300-3000
ANNET	YRB	Y	-	••	✓			**	✓	✓	✓			✓		✓	1300-2000
ARIZONA	Y	L	S	••	✓✓			**			✓	✓	✓	✓	✓	✓	1300-3000
ARNOVA	Y	PY	S	••	✓✓		✓✓	*			✓	✓	✓	✓	✓	✓	1300-3000
ASANTE	P	PY	S	••	✓			*			✓	✓	✓	✓	✓	✓	>2300
CARUSO	Y	LY	S	••	✓✓	✓✓	✓✓	**	✓							✓	1300-3000
CONNECT	Y	Y	S	••	✓✓			**		✓	✓	✓	✓	✓	✓	✓	1300-3000
DERBY	Y	LY	S	•	✓✓			*	✓	✓						✓	1300-3000
DESIREE	R	C	D	••••				**	✓	✓	✓			✓		✓	1800-2600
DESTINY	Y	Y	S	•	✓✓	✓✓	✓✓	**	✓	✓						✓	1300-3000
DUTCH ROBLIN	R	PY	M	••••	✓✓			**	✓							✓	1600-2600
EL-MUNDO	Y	LY	S	••••	✓✓	✓✓	✓✓	**			✓	✓	✓	✓		✓	1300-3000
FALUKA	Y	C	S	••				**			✓	✓	✓	✓		✓	1300-3000
JELLY	Y	Y	S	••••	✓✓			**	✓	✓	✓					✓	1300-3000
KENYA BARAKA	Y	PY	S	••	✓			*	✓	✓	✓	✓	✓	✓		✓	1600-2700
KENYA KARIBU	DY	Y	M	••••	✓			**	✓	✓	✓	✓	✓	✓		✓	1800-2800
KENYA MAVUNO	C		S	••••	✓			**	✓	✓	✓	✓	✓	✓		✓	1800-2800
KENYA MPYA	CW	CW	S	••	✓✓			*		✓	✓					✓	1400-3000
KENYA SIFA	P	C	M	••	✓			**		✓				✓		✓	1800-2800
KERR'S PINK	R	C	M	••				**	✓	✓	✓	✓	✓	✓		✓	1400-2700
MANITOU	R	PY	S	••	✓✓			**		✓	✓	✓	✓	✓		✓	1300-3000
MARKIES	W	C	S	••	✓✓	✓✓	✓✓	**	✓	✓						✓	1300-3000
MAYAN GOLD		Y	M	••••	✓✓	✓✓	✓✓	*	✓	✓		✓				✓	1300-3000
MUSICA	Y	DY	S	••••		✓✓	✓✓	*		✓						✓	1300-3000
PURPLE GOLD	DP	W	S	••••	✓✓		✓✓	**	✓	✓	✓	✓	✓	✓		✓	1800-3000
ROYAL	Y	Y	S	••••	✓✓			**	✓	✓						✓	1300-3000
RUMBA	Y	LY	S	••	✓✓	✓✓	✓✓	**	✓	✓						✓	1300-3000
RUDOLPH	R	W	S	••	✓✓			**	✓	✓	✓	✓	✓	✓		✓	1300-3000
SAGITTA	Y	Y	S	••	✓✓	✓✓	✓✓	**	✓	✓	✓	✓	✓	✓		✓	1300-3000
SARPO MIRA	R	PY	S	••••	✓✓✓			**	✓	✓	✓	✓	✓	✓		✓	1300-3000
SAVIOLA	Y	C	S	••	✓✓	✓✓	✓✓	*	✓	✓						✓	1300-3000
SHANGI	C	W	M	••				*	✓	✓						✓	1500-2800
SHEREKEA	R	C	M	••••	✓✓✓	✓✓	✓✓	**	✓	✓	✓	✓	✓	✓		✓	1800-3000
TAURUS	Y	LY	S	••	✓✓			**	✓							✓	1300-3000
TIGONI	W	PY	S	••••	✓			*	✓	✓	✓	✓	✓	✓		✓	1800-2600
TOLUCA	Y	LY	S	••••	✓✓			**	✓	✓				✓		✓	1300-3000

KEY

SYMBOLS AS USED	DEFINITION OF TERMS	TE RM	MATURITY	DISEASE RESISTANCE	TUBER DOMINANCY	YIELD	USAGE	EYE DEPTH	COLOUR
•	EARLY(90 DAYS)								
••	MEDIUM(90 -120 DAYS)								
•••	LATE(120 DAYS>)								
∨	TOLERANT								
∨∨	RESISTANCE								
∨∨∨	IMMUNE								
*	SHORT(30 DAYS)								
**	MEDIUM(30-60 DAYS)								
***	LONG(90 DAYS)								
^^^	HIGH(ABOVE 60 TONS/HA)								
^^	MEDIUM(40-60 TONS/HA)								
^	LOW(BELOW 40TONS/HA)								
✓	USED FOR								
S	SHALLOW								
M	MEDIUM								
D	DEEP								
C	CREAM								
CW	CREAM WHITE								
R	RED								
DR	DARK RED								
P	PURPLE								
DP	DARK PURPLE								
W	WHITE								
Y	YELLOW								
PY	PALE YELLOW								
G	GOLDEN								
LY	LIGHT YELLOW								
YRB	YELLOW (red blotched)								
DY	DEEP YELLOW								

NB: Find detailed information on each variety in the text

Table 2: Seed Potato producers and varieties they grow

Name	County	Contacts	Varieties
ADC	Nakuru	0721-202565 adcmolo@gmail.com	Tigoni, Asante, Kenya Sifa, Kenya Karibu, Kenya Mavuno, Dutch Robijn, Shangi.
Agrico East Africa	Nairobi	0722-206179 info@agrico.co.ke	Ambition, Arnova, Arizona, Rudolph, Markies, Manitou, Saviola, Toluca, Faluka, Destiny
ATC Chebororwa	Uasin Gishu	0726 141 029	Tigoni, Kenya Karibu, Asante, Kenya Mavuno, Sherekea, Kenya Mpya, Shangi
David Maingi	Meru	0722-816281 dkmaingi@yahoo.com	Asante
GTIL (mini tubers only)	Nairobi	0722 662037 kae@africaonline.co.ke	Asante, Tigoni, Kenya Mpya, Sherekea, Dutch Robijn, Kenya Karibu
Ismael Kiptoo	Uasin Gishu	0722 281 946	Tigoni, Kenya Karibu, Asante, Kenya Mavuno, Sherekea, Kenya Mpya, Shangi
KALRO Tigoni	Kiambu	0733834675 karitigoni@yahoo.com	Asante, Dutch Robijn, Tigoni, Kenya Mpya, Shangi
Kippaa Women	Elgeiyo Marakwet	0711-707214	Tigoni, Asante
Kisima Farm	Meru	0716-968766 shaun@kisima.co.ke kibet@kisima.co.ke	Tigoni, Asante, Sherekea, Kenya Mpya, Derby, Taurus, Sagitta
Peninah Kuumbai	Elgeiyo Marakwet	0723 267 935	Tigoni, Kenya Karibu, Asante, Kenya Mavuno, Sherekea, Kenya Mpya, Shangi
Rose Khaemba	Trans Nzoia	0721-339484 2kzim.kz@gmail.com	Dutch Robijn
St. Patrick High School	Elgeiyo Marakwet	0715 380100	Tigoni, Kenya Karibu, Asante, Kenya Mavuno, Sherekea, Kenya Mpya, Shangi
Suera Farm	Nyandarua	0706-186579 suera.flowers@gmail.com	Musica
Syngenta E.A Ltd	Nairobi	0703-018000 syngenta.east_africa@syngenta	Jelly, Rumba
Danespo	-	pve@danespo.com	Royal, Sarpo Mira
Den Hartigh	-	Br.krijger@denhartigh-potato.nl	Connect, Caruso
KWS	-	Jeroen.kuin@kws.com	El Mundo

AMBITION



Plant description

- moderate dry matter content
- good foliage
- good heat tolerance

Tuber features : Large, uniform, long oval
Shallow eyes
Very attractive white skin
White flesh

Tuber dormancy : Short

Maturity : Late (>3.5months)

Yield : High (70-75 t/ha)

Disease resistance : Good resistance to *Fusarium* sp, *Erwinia* sp, Potato cyst nematode (PCN) Ro1 and 4, Y^{ntn}-virus

Use : Mashing
Boiling
Roasting
Suitable for home chips

Areas to be grown : Suitable for all potato growing area

INSURE YOUR POTATO CROP WITH TRIANUM
FOR A BUMPER HARVEST!

Trianum



- ✓ Trianum protects the crop against soil-borne diseases such as Fusarium
- ✓ Trianum improves the root system
- ✓ Trianum increases yields

Koppert Biological Systems (K) Ltd.
Tel : +254 20 2021918, +254 731 202191
WWW.KOPPERT.COM | Email: info@koppert.co.ke

KOPPERT
BIOLOGICAL SYSTEMS

ANNET



Plant Description:

- is a tall plant of about 1 meter
- strong semi erect stems
- light green, medium sized leaves
- white flowers with a regular flowering habit
- greenish brown sprouts

Tuber features : Yellow skin (red blotched)
Yellow flesh

Tuber dormancy : Medium

Maturity : Medium (2.5-3 months)

Yield : Low (30-35 t/ha)

Disease resistance : Tolerant to late blight

Use : Mashing
Boiling
Roasting
Chips

Altitude range : 1300 - 2000 m.a.s.l.

ARIZONA



Plant description

- good initial development
- white flowers
- high yielding and should not be stored for too long before planting
- Low dry matter content

Tuber features : Large oval
Shallow eyes
Yellow skin
Yellow flesh

Tuber dormancy : Medium

Maturity : Medium (3 - 3.5 months)

Yield : Medium (45 t/ha)

Disease resistance : Good resistance to late blight and virus

Use : Mashing

Boiling

Roasting

Chips

Flakes

Baking

Areas to be grown : Suitable for all potato growing areas

Better yield and quality with Grimme potato equipment



Grimme cultivator for good soil preparation

- Perfect seed bed
- Less clods



Grimme potato planter for precision planting

- Accurate planting
- Increasing yields
- Less use of seed



Grimme potato Digger for gentle harvesting

- Proven technology
- Less bruising and damage to the crops

Grimme Premium Partner:



FMD East Africa

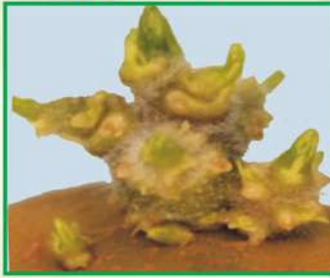
George Morara Avenue · P.O. Box 7277-20110 · Nakuru · Kenya
+ 254 722 205538 + 254 733 620016

Grimme Landmaschinenfabrik GmbH & Co. KG · www.grimme.com

GRIMME
HARVESTING SUCCESS!



ARNOVA



Plant description

- is a tall plant with and intermediate upright type foliage structure
- semi-upright stems, absent or very weak anthocyanin coloration
- medium to large, light to medium green leaves
- medium to high frequency of flowers, absent or very weak anthocyanin coloration inner side of flower corolla
- good heat tolerance
- low dry matter content
- sprouts are medium to large, conical, weak to medium intensity of anthocyanin coloration and strong to medium pubescence of base; small to medium terminal bud with very weak to weak anthocyanin coloration of tip; medium to many root tips

Tuber features : Yellow, smooth to medium smooth skin; pale yellow flesh; shallow eyes; very large to large oval tubers; very uniform to uniform in shape; good resistance to internal bruising

Tuber dormancy : Medium to long

Maturity : Medium (3-3.5 months)

Yield : Medium yielding (40 t/ha)

Disease resistance : Fairly susceptible to leaf blight, moderately resistant to tuber blight; potato virus X, virus Yⁿ and common scab. Good resistance to leaf roll, susceptible to virus A resistant to Ro1 of the potato cyst nematode; fairly resistant to powdery scab and Y^{hntn} Virus

Use : Suitable for table (Firm in cooking, no traces of after cooking blackening)

Areas to be grown : Suitable for all potato growing areas

ASANTE



Plant description:

- it exhibits a medium plant height
- has an intermediate type foliage structure
- stems are upright to semi-upright
- light green leaves
- high dry matter content

Tuber features : Round, pink smooth skin
Pale yellow flesh
Shallow eyes

Tuber dormancy : Short

Maturity : Medium (3months)

Yield : Low to medium (35-45 t/ha)

Disease resistance : Tolerant to late blight

Use : Chips
Mashing
Baking
Roasting

Altitude range : Above 2300 m.a.s.l.

CARUSO



Plant description

- main crop variety
- intermediate variety type
- high dry matter content

Tuber features : Short oval tubers
Shallow eyes
Yellow skin
Light yellow flesh
Low reducing sugar content

Tuber dormancy : Medium

Maturity : Medium

Yield : Low to medium (30 - 50 t/ha)

Disease resistance : Resistant to PCN Ro1 and 4, PVY and PLRV
High resistance to late blight, tuber blight, common scab and internal rust spot

Use : Crisps
Chips
Boiling
Mashing
Roasting

Areas to be grown : Suitable for all potato growing areas

SEED POTATOES
KENYA | THE NETHERLANDS
UNITED IN INCREASING FOOD SECURITY



**Say partnership
say
Agrico**



New Agrico varieties from Holland are available in Kenya now. They have been selected by some of the worlds leading potato experts for Kenyan Farmers. We have varieties for Crisping, French Fries, and cooking. Good yields and great quality can turn your farm into a valuable business.

**Say potato,
say Agrico.**

Email: info@agrico.co.ke

Tel: +254 20 3540568 / +254 722 206179

P.O. Box 63249 – 00619 Nairobi, Kenya

CONNECT



Plant description

- tall plant with rapid development
- dark green leaves
- vigorous plant with very good ground covering
- does not flower
- good tolerance to drought

Tuber features : Shape; round oval
Uniform shape
Yellow skin
Yellow flesh
Large tubers
Very shallow eyes
Fairly good resistance to internal bruising

Tuber dormancy : Medium to long

Maturity : Early to medium (3.5 - 4 months)

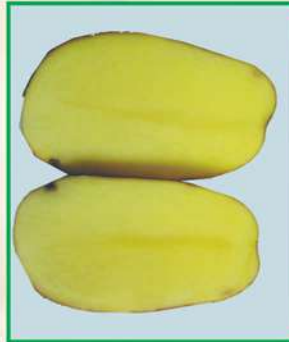
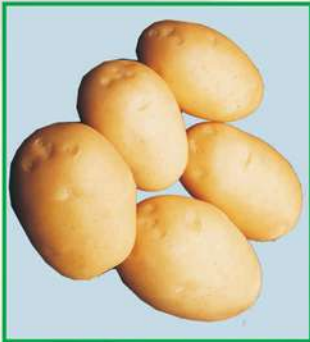
Yield : Medium to high (40-60 t/ha)

Disease resistance : Resistant to late blight and virus

Use : Table variety (short cooking time, mealy, free discoloration, and Suitable for home chips)

Areas to be grown : Suitable for all potato growing areas

DERBY



Plant description

- is a medium tall plant with leaf type foliage structure and semi-upright growth habit and absent or very weak anthocyanin coloration of the stem; low frequency of flowers
- good dry matter content
- sprout are medium to large in size, conical in shape with weak intensity of anthocyanin coloration of base. Has small size of tip in relation to base

- Tuber features** : Large oval
Yellow skin
Light yellow flesh
Shallow to medium eyes
- Tuber dormancy** : Short (suitable for second crop)
- Maturity** : Early
- Yield** : High (70-75 t/ha under optimum crop management)
- Disease resistance** : Good resistance to Late blight and scab
Resistant to PCN (*Globodera rostochiensis* species)
Resistant to Wart disease *Fysio 1 and 2*
- Use** : Chips
Boiling
Mashing
Roasting
Crisps
- Areas to be grown** : Suitable for all potato growing areas

DESIREE



Plant Description:

- is a medium sized potato plant with strong semi-erect stems
- moderate foliage cover
- has good storage
- has pink sprouts
- high dry matter content

Tuber features	: Oval to round Shallow to medium eyes Red skin Cream flesh
Tuber dormancy	: Long
Maturity	: Late (4 - 4.8 months)
Yield	: Low to medium (35-40 t/ha)
Disease resistance	: Susceptible to late blight
Use	: Chips Boiling Mashing
Altitude range	: 1800-2600 m.a.s.l.

DESTINY



Plant description

- second to early crop
- good initial development
- light purple flower that varies in light to dark purple
- dark green leaves
- high dry matter content
- sprouts are medium to large, conical, weak to medium intensity of anthocyanin coloration and strong to medium pubescence of base; medium to large terminal bud with very weak anthocyanin coloration of tip

Tuber features : High numbers of round/oval tubers
Relatively shallow red eyes
Yellow skin and flesh color
Uniform in grading

Tuber dormancy : Medium

Maturity : Early (3-3.5 months)

Yield : Low (30 - 40 t/ha)

Disease resistance : Good resistance to Y-virus, X-virus and PCN
Good resistance to early blight and *Erwinia* sp

Use : It is a great processing variety. The shape and dry matter content is ideal for crisps

Areas to be grown: Suitable for all potato growing areas



Kisima Farm Ltd seed potatoes are Kenya's best brand of seed potato.

We supply high quality, disease free seed potatoes that a farmer can expect increased yields.

For more information, call us on our hotline:
0716 968 766

DUTCH ROBIJN



Plant Description:

- it exhibits a medium plant height
- has upright stems
- has minimal foliage
- the leaves are dark green with white flowers although in most cases they do not flower
- it has thin stems and green buds
- high dry matter content

Tuber features : Round in shape
Pale yellow flesh colour
Slightly rough, red skin
Medium eyes and tubers
Have a very good storage capacity

Tuber dormancy : Long

Maturity : Late (4-5 months)

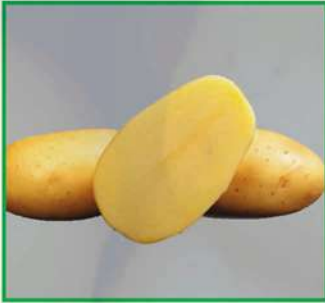
Yield : Low to medium (35-40 t/ha)

Disease resistance : Moderately resistant to late blight

Use : Crisps

Attitude range : 1600-2600 m .a .s .l.

EL-MUNDO



Plant description

- it gives a large number of good-sized tubers with a very high yield
- it grows well and develops strong foliage and therefore, it should not be over fertilized
- the use of organic manure is not recommended with this variety
- high dry matter content

Tuber features : Medium in size
Long oval
Uniform in shape
Yellow skin
Light yellow flesh
Shallow eyes

Tuber dormancy : Long

Maturity : Late (5-6 months)

Yield : High (60 t/ha) under intense management

Disease resistance : Good resistant to late blight

Tolerant to drought

Resistant to PVY

Use : Fairly firm in cooking; consistent colour after cooking; table variety (mashing, roasting and boiling) and of good taste

Areas to be grown : Suitable for all potato growing areas

FALUKA



Plant description

- it grows tall and has intermediate type foliage structure
- stems grow semi-upright to spreading and very weak to weak anthocyanin coloration
- large, medium green leaves and intermediate to open silhouette
- medium to high frequency of flowers with absent or very weak anthocyanin coloration of inner side flower corolla
- good heat resistance

Tuber features : Large, long oval
Uniform in shape
Yellow skin
Cream flesh
Shallow eyes
Good resistance to internal bruising
Low dry matter content
Uniform in grading

Tuber dormancy : Medium to long

Maturity : Early to medium (3 ± 0.5 months)

Yield : Medium (42.5 t/ha)

Disease resistance : Susceptible to leaf blight and tuber blight
Good resistance to virus X and virus Yⁿ
Moderately resistant to common scab

Use : Table variety (fairly firm in cooking; little after cooking blackening)

Areas to be grown : Suitable for all potato growing areas

**More Marketable Yield,
Think Consento!**

CONSENTO is the best Late blight protection available today. It is the right tool to control the new very-aggressive strains attacking your potato crop at early stages.

The new fungicide offers:

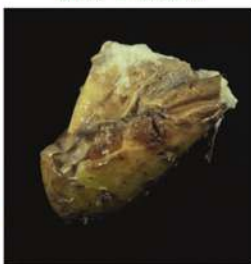
- Excellent preventive and curative efficacy,
- Protects new growing leaves and shoots,
- Controls stem and tuber blight infections,
- Meets consumer and food-industry demands.

The Latest Innovation for Late blight control in potato

leaf and stem infection



tuber infection



Effective Protection, Meets quality requirements

For further information, please contact:
CropScience Division,
Thika/Outer Ring road, Ruaraka
P.O.Box 30321, 00100 GPO, Nairobi, Kenya
Tel: (+254-20) 8600000
E-mail: bcs.ke@bayer.com



JELLY



Plant description

- has medium demands to the soil and water supply
- has high drought and heat tolerance
- has medium tuberization rate thus the recommended plant density is approx. 42,000 plants/ha
- very high marketable yield
- has good storability

Tuber features : Nice, oval medium to big sized
Yellow, smooth to slightly netted skin
Pure yellow flesh
Has low raw discoloration
Very shallow eyes

Tuber dormancy : Medium

Maturity : Late (4-4.5 months)

Yield : Medium (40-50 t/ha)

Disease resistance : Tolerant to late blight, tuber blight, leaf blight, black leg, *Rhizoctonia* sp, common scab, bacterial wilt, (PVY), Cyst Nematodes and potato wart disease

Use : Mashing
Boiling
Roasting
Chips
Crisps

Areas to be grown: Suitable for all potato growing areas

KENYA BARAKA



Plant Description:

- is a tall plant with upright stem foliage structure
- has no or very weak anthocyanin coloration on the stems
- has high frequency of flowers with medium to strong anthocyanin coloration inside flower corolla
- has good storage
- has greenish in colour sprouts
- high dry matter content

Tuber features	: Oval Very large Rather shallow eyes Yellow skin Pale yellow flesh
Tuber dormancy	: Short
Maturity	: Early to medium (2.6 - 4 months)
Yield	: Low (30-35 t/ha)
Disease resistance	: Tolerant to late blight and drought
Use	: Chips Boiling Mashing
Altitudes range	: 1600-2700 m.a.s.l.

KENYA KARIBU



Plant description:

- is a tall variety (slightly above 1 meter with strong erect stems)
- slightly dark green, narrow, sharp pointed leaves
- abundant light purple flowers and regular flowering habit
- produces a vigorous crop with good ground cover
- dark red sprouts
- high dry matter content

Tuber features : Round in shape
Medium eyes
Deep red skin
Yellow flesh

Tuber dormancy : Long

Maturity : Medium (>3months).

Yield : Low to medium (35-40 t/ha)

Disease resistance : Tolerant to late blight and to most potato viruses

Use : Chips
Crisps
Boiling
Mashing

Altitude range : 1800-2800 m.a.s.l.

KENYA MAVUNO



Plant description:

- is a tall plant attaining a height of about 1 meter
- has strong semi erect stems
- green medium sized leaves
- abundant white flowers and regular flowering habit
- the variety produces a vigorous crop with good ground cover
- light green sprouts under diffuse light store
- high dry matter content

Tuber features	:	Oval Shallow eyes Cream flesh Cream skin
Tuber dormancy	:	Long
Maturity	:	Late (>4 months)
Yield	:	Low (20-30 t/ha)
Disease resistance	:	Tolerant to late blight and to most of the potato viruses
Use	:	Chips Boiling Mashing
Altitude range	:	1800-2800 m.a.s.l.

KENYA MPYA



Plant Description:

- is a tall plant with a height of about 1 meter
- has a strong semi erect stem
- light green, medium sized leaves
- has white flowers with regular flowering habit
- is a vigorous crop with good ground cover
- good storability

Tuber features : Oval /round tubers
Early tuberization
Large size tubers
Cream white skin
Shallow pink eyes
Cream white flesh

Tuber dormancy : Short

Maturity : Medium (3.0-3.5 months)

Yield : Low in medium (35-45 t/ha)

Disease resistance : Resistant to late blight

Use : Boiling
Roasting
Mashing
Chips

Altitude range : 1400-3000 m.a.s.l.

KENYA SIFA



Plant description:

- is a very tall potato variety (slightly above 1 meter)
- has a strong erect stem
- dark green broad leaves
- abundant light purple flowers with regular flowering habit
- it produces a vigorous crop with good ground cover
- high dry matter content

Tuber features	: Flat/round in shape Medium eye depth Pink skin Cream flesh Dark red sprouts under diffused light store
Tuber dormancy	: Long
Maturity	: Medium (3-3.5 months)
Yield	: Low (20-30 t/ha)
Disease resistance	: Highly tolerant to late blight and tolerant to most of the potato viruses
Use	: Chips Boiling
Altitude range	: 1800-2800 m.a.s.l.

KERR'S PINK



Plant description:

- is a tall plant
- has white flowers
- has pink sprouts

Tuber features	: Short oval shape Medium eyes Red skin Cream flesh
Tuber dormancy	: Medium
Maturity	: Medium (2-3 months)
Yield	: Low (25-30 t/ha)
Disease resistance	: Susceptible to late blight Tolerant to drought
Use	: Roasting Mashing Chips Boiling
Altitude range	: 1400-2700 m.a.s.l.

MANITOU



Plant description

- is a tall plant with an intermediate type foliage structure
- stems upright to semi-upright
- large, light to medium green leaves and intermediate to open silhouette
- medium to high frequency of violate flowers and medium to strong anthocyanin coloration of inner side flower corolla
- sprouts are medium, oval, strong intensity of anthocyanin coloration and strong pubescence of base; small to medium terminal bud with medium to strong anthocyanin coloration of tip; medium too many root tips

Tuber features : Oval to long oval tuber
Red smooth skin with pale yellow flesh
Shallow eyes and a medium dry matter content
Good resistance to internal bruising
Uniform in grading

Tuber dormancy : Medium to long

Maturity : Early (3.5 ± 0.5 months)

Yield : Medium (45 t/ha)

Disease resistance : Susceptible to leaf blight
Good resistance to tuber blight and virus Yⁿ
Moderately resistant to virus X and common scab
Immune to wart disease
Resistant to Ro1 of the potato cyst nematode

Use : Very suitable for table consumption and chips
Good universal potato

Areas to be grown : Suitable for all potato growing areas

MARKIES



Plant description

- has good foliage
- is a tall plant with upright stem type foliage structure
- stem has medium anthocyanin coloration
- large, medium green leaves and closed to intermediate silhouette
- high frequency of flowers, absent or very weak anthocyanin coloration inner side of flower corolla
- sprouts are medium to large conical, strong intensity of anthocyanin coloration and strong to medium pubescence of base; medium to large terminal bud with strong to very strong anthocyanin coloration of tip; few to medium root tips

Tuber features : Large, oval to long oval
Uniform in shape
White skin with Cream flesh
Shallow eyes
Good resistance to internal bruising
High dry matter content

Tuber dormancy : Long to very long

Maturity : Late (4months)

Yield : Medium (40 t/ha)

Disease resistance : Fairly good resistance to leaf blight, tuber blight and virus Y

Moderately resistant to PLRV

Good resistance to virus A and virus X

Resistant to Ro1 of the potato cyst nematode

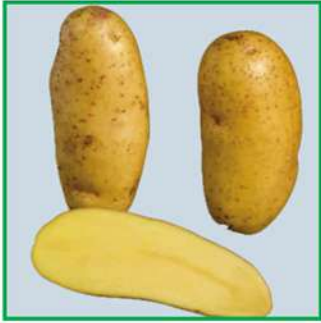
Fairly susceptible to common scab

Tolerant to drought

Use : Suitable for chips and crisps

Areas to be grown : Suitable for all potato growing areas

MAYAN GOLD



Plant description

- is a tall to very tall plant height
- has a spreading growth habit
- high frequency of flowers red violet in colour
- very many frequency of berries
- blue base of light sprout

Tuber features : No skin pigmentation
Long, oval
Yellow flesh
Medium eye
Extremely creamy yet dry texture
Superb flavor when cooked in its skin

Tuber dormancy : Short

Maturity : Late

Yield : Low (20-30 tons/ha)

Disease resistance : Fairly resistant to late blight on foliage (*Phytophthora infestans*), powdery scab (*Spongospora subterranean*), PVY and PLRV
Susceptible to dry rot *Fusarium sulphureum*, potato cyst nematode *Globodera rostochiensis* Ro1 and *Globodera pallida* Pa2/3, 1

Use : Chips
Roasting

Areas to be grown : Suitable for all potato growing areas

MUSICA



Plant description

- is a medium to tall plant with a leaf type foliage structure
- stems semi-upright to spreading and absent or very weak anthocyanin coloration
- medium to large, light to medium green leaves and intermediate silhouette
- absent or very low frequency of flowers, absent or very weak anthocyanin coloration of inner side flower corolla
- sprouts are large, conical, medium intensity of anthocyanin coloration and strong to medium pubescence of base; medium terminal bud with very weak to weak anthocyanin coloration of tip; medium to many root tips

Tuber features : Uniform large long oval; yellow, smooth to medium smooth skin; deep yellow flesh; shallow eyes. low to very low dry matter; fairly good resistance to internal bruising

Tuber dormancy : Short

Maturity : Late

Yield : High (60t/ha) optimum crop management

Disease resistance : Susceptible to leaf blight; good resistance to potato virus X, and virus Yⁿ; immune to wart disease resistant to Ro1 and Ro2/3 of the potato cyst nematode; good resistance to common scab

Use : Suitable for chips (has an excellent taste)

Areas to be grown : Suitable for all potato growing areas

PURPLE GOLD



Plant description:

- medium size plant slightly below 1 meter
- has semi-erect strong stems
- small to medium sized leaves
- purple flower and regular flowering habit
- good storability / resistant to greening
- high tuber uniformity

Tuber features	: Round tubers Dark purple skin White flesh Shallow eye depth
Tuber dormancy	: Long
Maturity	: Long (4.0-4.5 months)
Yield	: Low (20-35 t/ha)
Disease resistance	: Moderately resistant to late blight, PLRV Resistant to PVX Susceptible to PVY Tolerant to most soil borne diseases Moderately susceptible to leaf miner
Use	: Mashing Boiling Roasting Chips
Altitude range	: 1800-3000 m.a.s.l.

ROYAL



Plant description

- has very good storability
- is a very high yielding variety with high % of big tubers that have perfect qualities for making chips and crisps
- the leaves are dark green and in most cases no flowering occurs, and if it does, the flowers are white with yellow tips

Avoid high dose of Nitrate (N), which will make the variety late maturing

Tuber features : Large, round-oval
Yellow skin
Pale yellow to yellow flesh
Shallow eyes
Fairly good resistance to internal bruising
Fairly high dry matter

Tuber dormancy : Medium to long

Maturity : Medium-to- late (3.5 to 4 months)

Yield : High (60-80 t/ha under intense management)

Disease resistance: Resistant to nematodes and wart diseases, medium blight and scab resistance

Use : Mashing
Boiling
Roasting
Chips
Flakes

Areas to be grown : Suitable for all potato growing areas

RUMBA



Plant description

- has high dry matter content
- has good tolerance to drought
- flowers are white with yellow tip

Tuber features : Short-oval in shape tubers
Shallow – medium eye depth
Yellow slightly netted skin
Light yellow flesh
Uniform in grading

Tuber dormancy : Long

Maturity : Medium early

Yield : Medium (50t/ha)

Disease resistance : High resistance to late blight, Potato Virus Y and Potato leaf roll virus

Use : Crisps (very low peeling loss due to tuber shape excellent frying color and taste, low sugar content)

Areas to be grown : Suitable for all potato growing areas

RUDOLPH



Plant description

- is a tall plant
- has an intermediate type foliage structure
- stems are upright and strong to very strong anthocyanin coloration
- medium to large, dark green leaves and intermediate silhouette
- medium to high frequency of flowers and strong to very strong anthocyanin coloration inner side flower corolla
- sprouts are medium oval, have strong to very strong intensity of anthocyanin coloration; medium pubescence of base; medium terminal bud with medium anthocyanin coloration of tip; few to medium root tips

Tuber features : Large oval to round oval
Uniform in shape
Red smooth to medium smooth skin
White flesh
Rather shallow eyes
Medium dry matter
Moderately resistant to internal bruising
Uniform in grading

Tuber dormancy : Long

Maturity : Medium to early (3.5 ± 0.5 months)

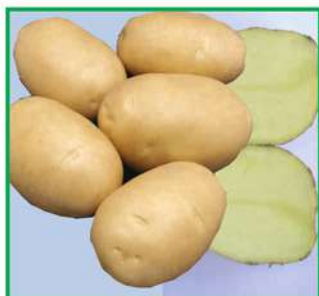
Yield : Medium (40 t/ha)

Disease resistance : Susceptible to leaf blight, common scab and PVY
good resistance to tuber blight
moderately resistant to potato virus
immune to wart disease

Use : Suitable for table (mashing, boiling and roasting),
chips and crisps

Areas to be grown: Suitable for all potato growing areas

SAGITTA



Plant description

- is medium to tall plant
- has intermediate type foliage structure
- semi upright growth habit and medium thick stems with absent or very weak anthocyanin coloration
- high frequency of flowers
- sprout are large, conical with weak to medium intensity of anthocyanin coloration of base small to medium size of the tip

Tuber features

: Oval tubers
Yellow skin
Light yellow flesh
Shallow eyes
Good dry matter content

Tuber dormancy : Medium long (Suitable for second crop)

Maturity : Medium early

Yield : High (70 -75 t/ha)

Disease resistance: Resistant to PCN types *Globodera rostochiensis* and
Wart disease fysio 1

Highly resistant to Spraing, tuber blight and PVY

Tolerant to PVY^{nm} in tuber

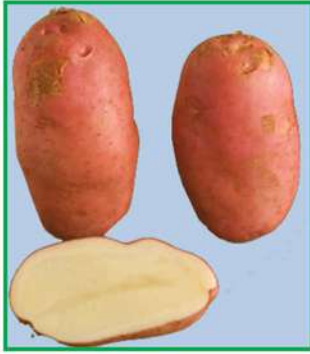
Moderate resistant to foliage blight and common scab

Good resistance to powdery scab

Use : Multipurpose variety-table, chips and crisps

Areas to be grown: Suitable for all potato growing areas

SARPO MIRA



Plant description

- Has a unique high resistance against blight that allows growing without treatment of fungicides
- perfect variety for small farmers and professional growers as variety can go to fresh market and industry

Avoid high dose of Nitrate (N), which will make the variety late maturing

Tuber features : Large, long-oval
Uniform in shape
Red skin
Pale yellow flesh
Shallow eyes
Medium to high dry matter content

Tuber dormancy : Medium

Maturity : Medium-to-medium late (3.5 to 4 months)

Yield : Medium (45 t/ha)

Disease resistance: Extremely good resistance to late blight (no spraying against blight needed) and virus
Strong tolerance against drought

Use : Suitable for table (Mashing, boiling and roasting)
chips, and flakes

Areas to be grown : Suitable for all potato growing areas

SAVIOLA



Plant description

- is a strong plant
- has a purple flower
- good initial development
- can be grown as an early main crop as it is high yielding
- the plant has a good heat resistance

Tuber features : Large
Long oval
Uniform in shape
Yellow skin
Cream flesh
Very shallow eyes
Medium dry matter content

Tuber dormancy : Short

Maturity : Early main crop (3.5 ± 0.5 months)

Yield : Medium (42.5 t/ha)

Disease resistance : Resistant to virus Yⁿ, Y^{ntm} and late blight

Use : Strong firm cooking
Mashing
Boiling
Roasting

Areas to be grown: Suitable for all potato growing areas

SHANGI



Plant description

- is a highly prolific, versatile use
- about 1 meter high
- broad leaves which are light green in colour without anthocyanin pigmentation on the mid rib
- has an upright growth
- flowers are abundant

Tuber features : Oval tubers
Uniform in grading
Cream skin
White flesh
Medium to deep eye with pink pigmentation

Tuber dormancy : Very short

Maturity : Medium (3-4 months)

Yield : Low (30-40 t/ha)

Disease resistance : Moderately susceptible to late blight

Use : Mashing
Boiling
Roasting
Chips

Altitude Range : 1500-2800 m.a.s.l.

SHEREKEA



Plant description:

- is a medium sized potato plant (slightly below 1 meter)
- has strong semi erect-stems
- dark green, small to medium sized leaves
- very abundant light purple flowers and regular flowering habit
- high number of tubers per plant
- good storability
- high dry matter content

- Tuber features** : Oblong/round tubers
Red skin
Cream flesh, red-violet under diffuse light store
Medium eye depth
- Tuber dormancy** : Long
- Maturity** : Medium (3.5-4.0 months)
- Yield** : Medium (40-50 t/ha)
- Disease resistance**: Very strong horizontal resistance to late blight
Resistance to PVY and PLRV
Moderately susceptible to leaf miner
- Use** : Good for table (boiling, roasting and mashing)
crisps, chips
- Altitude range** : 1800-3000 m.a.s.l .

TAURUS



Plant description

- is a medium to tall plant with intermediate type foliage structure
- stem exhibits upright to semi upright growth habit and weak anthocyanin coloration
- medium to high frequency of flowers, absent or very weak anthocyanin colouration inner side flower corolla
- sprouts are large, spherical, have medium to strong intensity of anthocyanin coloration, strong to medium pubescence of base; large terminal bud with medium anthocyanin coloration of tip; very few to few root tips

Tuber features : Round to round oval
Yellow, smooth skin
Pale yellow flesh
Rather shallow eyes

Tuber dormancy : Long

Maturity : Medium (4months)

Yield : Good

Disease resistance : Very good resistance against virus Yⁿ
Good resistance against tuber blight
Moderately resistant against leaf blight, common scab, and internal bruising
Resistant to potato cyst nematode Ro1

Use : Crisps

Areas to be grown: Suitable for all potato growing areas

TIGONI



Plant description

- is a tall variety
- has an upright stem
- light green leaves
- the stems are usually thick in structure
- produce white flowers
- high dry matter content

Tuber features : Long-oval
White smooth skin
Pale yellow flesh
Shallow eyes
Poor tuber storage
Turns colour with exposure to light

Tuber dormancy : Short

Maturity : Medium (3-4 months)

Yield : Low to medium (35- 45 t/ha)

Disease resistance: Tolerant to late blight

Use : Chips
Mashing
Boiling
Baking
Roasting

Areas to be grown: 1800 -2600 m.a.s.l

TOLUCA



Plant description

- is a strong plant with good initial development
- plant has a white flower
- can be used for organic farming due its high rate blight resistance

Tuber features : Oval, medium tuber size
Yellow skin
Light yellow flesh
Fairly shallow eyes
High dry matter content

Tuber dormancy : Medium

Maturity : Late (4 months)

Yield : Low (30 - 40 t/ha) uniform in grading

Disease resistance: Very high resistance to late blight and Y^{nm} virus

Use : Excellent baking
Table variety (mashing, boiling, roasting)
Chips
Crisps

Areas to be grown: Suitable for all potato growing areas

For further information please contact the following

NPCK

Tel : 020 2411921
Cell : +254 712 338 633
Email : npck@npck.org
Website : www.npck.org
SMS Service: 31155

Or

KEPHIS

Tel : 020 3597201/2/3
Cell : +254 722 516 221
Email : kephisinfor@kephis.org
Website : www.kephis.org
SMS-service: 5354


Or

KALRO -Tigoni


Tel : 020 2076915
Cell : +254 727 031 783
Email : kalro.tigoni@yahoo.com
kalro.tigoni@kalro.org
Website : www.kalro.org

The following are acknowledged for the images used in this catalogue:

- Agrico East Africa
- International Potato Centre (CIP)
- Danespo
- Den-Hartigh
- Europlant
- HZPC (Hettema - ZPC)
- International Fertilizer Development Centre (IFDC)
- Meijer
- Kenya Plant Health Inspectorate Service (KEPHIS)
- KWS - (Kleinwanzlebener Saatzucht)
- Kenya Agricultural and Livestock Research Organisation (KALRO) - NPRC Tigoni
- Kisima farm
- Rose Khaemba



**Good Information / Quotes:
Seed pays it does not cost! Buy certified seed!**



Prepared by:-

Esther Kaguora (NPCK), Emily Osená (Kenya - Netherlands Seed Potato Development Project), Meshack Rono (NPCK), Moses Nyongesa (KALRO - Tigoni)

Other Contributors :-

Joseph Maina (MoALF), Monica Parker (CIP), Peter Kurei (IFDC), Simeon Komen (KEPHIS)

Coordinated by:-

Wachira Kaguongo (NPCK)
