

POTATO VARIETY CATALOGUE 2017



**NATIONAL POTATO
COUNCIL OF KENYA**

The Syngenta Potato Spray Programme













First Emergence	Early Rosette	Rapid Canopy	Flowering	Canopy Complete							Desiccation	Usage Rate						
				3	4	5	6	7	8	9		10	11	12	13	15-20 lb/ Knapsack sprayer	PHI	Spray interval in days
Weeks																		
• Soil borne pests																8gm	7	7
• Leaf miner/mites																10ml	7	3
• Aphids																8ml	5	7
• Potato tuber moth																25ml	7	14
• Early & Late Blight																80ml	5	7
																50g	7	7
																20ml	7	7
																50g	7	7
																20ml	7	7
Grass Weed Control	 (apply when weeds are between 2-8 leaf stage)															150ml	N/A	N/A
																20ml	7	7
																20ml	7	7

Table of Contents

FOREWORD	5
KEY PARTNERS IN DEVELOPMENT OF THE POTATO	
VARIETY CATALOGUE.....	6
NATIONAL POTATO COUNCIL OF KENYA	7
ECOLOGICAL REQUIREMENTS	9
DEFINITION OF WORDS.....	9
VARIETY CHARACTERISTICS.....	9
ACOUSTIC	13
AMBITION	14
ANNET.....	15
ARIZONA.....	16
ARNOVA	17
ASANTE.....	18
CAROLUS	20
CARUSO	22
CHALLENGER	23
CHULU.....	24
CONNECT	25
DERBY	26
DESIREE	27
DESTINY	28
DUTCH ROBIJN	29
EL-MUNDO.....	30
EVORA.....	31
FALUKA.....	32
JELLY.....	33
KENYA BARAKA	34
KENYA KARIBU	36
KENYA MAVUNO	37
KENYA MPYA.....	38
KENYA SIFA	39
KERR'S PINK.....	40
KONJO	41
KURODA	43
LADY AMARILLA	44
LAURA	45
LENANA	46
MANITOU	47
MARKIES.....	48
MAYAN GOLD.....	49

Table of Contents

MILVA.....	50
MUSICA.....	52
NYOTA.....	53
PANAMERA	54
PURPLE GOLD	55
RODEO	56
ROYAL	57
RUMBA.....	58
RUDOLPH	60
SAGITTA	61
SARPO MIRA.....	62
SAVIOLA.....	63
SHANGI.....	64
SHEREKEA.....	65
SIFRA.....	66
TAURUS	67
TIGONI.....	68
TOLUCA.....	69
UNICA	70
VOYAGER.....	71
WANJIKU.....	72
ZAFIRA.....	73
OTHER VARIETIES	74
NPCK GOLD MEMBERS	75

LIST TABLES

Table 1: Summary of the major attributes.....	10
Table 2: Seed Potato producers and varieties	12



FOREWORD

This Potato variety catalogue is the third after the 2015 and 2013 editions. The 2017 edition has 19 new potato varieties that were released after the 2015 edition. It also has 7 additional Seed Potato producers.

The Potato Variety catalogue describes potato varieties in terms of variety use, tuber features, maturity period, yields, disease and pest resistance. A brief description of the growth characteristics has also been provided. Using the details provided, it is easy to identify each variety targeting specific market. It also has the names and contacts of seed potato merchants and out growers, which helps farmers, know where to source seed potato.

This is an initiative aimed at enhancing awareness about the released varieties and helping create linkages between the seed growers and ware potato farmers. The Potato Variety Catalogue is therefore, an important reference material for farmers and other market players.

It is expected that potato industry will highly benefit from the condensed variety information, helping improve access to high quality-disease free seed potato. This will help enhance productivity, profitability, and market competitiveness of the subsector, in line with the UN Sustainable Development Goals (SDGs), Vision 2030 and ASDS (2009-2020).

The development and distribution of this catalogue could not have been possible without the financial and technical support from our partners who include the Ministry of Agriculture, Livestock and Fisheries, German Cooperation (GIZ), Kenya- Netherlands Seed Potato Development Project, Kenya Agricultural and Livestock Research Organization (KALRO NPRC), Kenya Plant Health Inspectorate Service, (KEPHIS), International Potato Center (CIP, International Fertilizer Development Center (IFDC), SNV the Netherlands Organization, Syngenta Foundation, Syngenta Company Limited and Feed the Future Kenya Accelerated Value Chain Development (AVCD) project, funded by USAID.

Wachira Kaguongo
Chief Executive Officer,
National Potato Council of Kenya



KEY PARTNERS IN DEVELOPMENT OF THE POTATO VARIETY CATALOGUE

Republic of Kenya



Ministry of Agriculture,
Livestock and fisheries



german
cooperation

DEUTSCHE ZUSAMMENARBEIT

Implemented by

giz

Deutsche Gesellschaft
für Internationale
Zusammenarbeit (GIZ) GmbH



Kingdom of the Netherlands



USAID
FROM THE AMERICAN PEOPLE



FEED THE FUTURE
The U.S. Government's Global Hunger & Food Security Initiative



CGIAR



CIP
INTERNATIONAL
POTATO CENTER
A CGIAR RESEARCH CENTER



INTERNATIONAL FERTILIZER DEVELOPMENT CENTER



KALRO
Kenya Agricultural & Livestock
Research Organization



• KEPHIS •



syngenta foundation
for sustainable
agriculture

syngenta



NATIONAL POTATO COUNCIL OF KENYA

The National Potato Council of Kenya (NPCK) is a Public Private Partnership (PPP) and a multi-stakeholder organization whose responsibility is to help plan, organize, and co-ordinate potato value chain activities and develop the subsector into a robust, competitive, and self-regulating industry. The Potato Council organizational structure enables it to draw synergies from a wide membership, representing all stakeholders and actors in the potato industry.

NPCK VISION STATEMENT

Potato industry is a leading contributor to increased incomes, food security, and improved welfare in Kenya

NPCK MISSION STATEMENT

Coordinate potato sub-sector stakeholders towards development of potato industry's profitability and livelihoods improvement.

NPCK OBJECTIVES

The NPCK Strategic Plan is anchored on six objectives:

1. To contribute in creating an enabling environment for effective and efficient potato value chains for growth and development of a self-regulating potato industry.
2. To help build a cohesive potato industry in order to promote synergies and minimize duplication for efficient use of resources through enhanced public private partnership
3. To promote best practices for quality standards, improved yields and enhanced value addition in order to thrive in local, regional, and global markets.
4. To create a platform for information management and capacity building for the various potato value chain actors.
5. To mobilize and effectively manage resources for the growth and stability of the organization and prosperity of the industry.
6. To identify and mainstream crosscutting and emerging issues within the potato industry



NPCK SERVICES

1. Collect, process and disseminate subsector information
2. Provide an avenue for creating awareness about partners' products and services through NPCK website and publications
3. Offer a platform for networking and business engagements through annual National Potato Conference and trade fair, County trade fairs in potato producing zones, and bi annual stakeholders meetings
4. Facilitate development of standardized branded seed and ware potato packaging bags for use by farmers and traders for quality adherence
5. Facilitate market linkages between Potato farmers and the market outlets and between seed producers and ware potato farmers.
6. Inform policy formulation for the subsector, promote adherence to regulations and adoption of good agricultural practices
7. Lobby and advocacy for supportive policy and legal framework
8. Consultancy services along the potato value chain
9. Training and capacity building of farmers, farmer cooperatives and farmer associations
10. Act as a National platform for planning, organizing, and coordination of all subsector activities

NPCK MEMBERSHIP

NPCK draws synergies from a wide membership representing all stakeholders and actors in the industry who include: Farmers, Researchers (National and international), Public institutions, Extension providers, seed producers, Traders, Processors, Regulatory agencies, Financial service providers, input providers, Ministry of Agriculture for National and County governments, Development partners and other actors and players.

NPCK has three Membership categories; Gold, Silver and Bronze that allows engagement, services and benefits at different levels.

For more details about membership, please follow the link:

www.npck.org



ECOLOGICAL REQUIREMENTS

Potato growing areas: There are 13 major potato-producing counties which are: Meru, Nyeri, Nyandarua, Kiambu, Taita-Taveta, Nakuru, Narok, Bomet, Elgeyo-Marakwet, Trans-Nzoia, Bungoma, Uasin-Gishu and West Pokot; Other potato producing counties include Kisii, Nyamira, Kirinyaga, Muranga, Baringo, Nandi, Laikipia and Kericho. Other upcoming potential potato producing counties (mainly in the hilly masses) include Machakos, Makueni, Embu, Kajiado, Tharaka Nithi, Samburu, Kwale and Nairobi

Altitude: Traditionally grown between 1500 to 3000 Metres Above Sea Level(m.a.s.l). However, some new varieties can still do well in altitude below 1500 m.a.s.l.

Soil types: Ideal soils for potatoes vary within the counties but usually loam soils (silt loam; clay loam with adequate organic content, well-draining to light soils) are suitable. Suitable soil pH ranges from 5.5-7.0. Ideal soil pH 5.5

Temperature: Mean daily temperature range from 15-24(oC)

Annual rainfall: Mean Rainfall (mm) 1200-1800mm

DEFINITION OF WORDS

1. Intensive Management- the crop has been grown using high quality seed, has adequate water and nutrients and has grown under good agronomical practices

2. Conventional Management- The crop has been grown under farmer growing management practices

3. Table Variety- Can be used for mashing, roasting, boiling, baking and stew

VARIETY CHARACTERISTICS:

The following agricultural characteristics are specified for each variety:

- ❖ Use
- ❖ Areas to be grown
- ❖ Maturity
- ❖ Yield
- ❖ Tubers features
- ❖ Tuber dormancy
- ❖ Plant description
- ❖ Disease resistance/ Tolerance



Table 1: Summary of the major attributes

VARIETY	USAGE			ALTITUDE RANGE	MATURITY	YIELD	TUBER CHARACTERISTICS			TUBER DORMANCY	DISEASE RESISTANCE/TOLERANCE		
	CRISPS	CHIPS	TABLE				SKIN COLOUR	EYE DEPTH	FLESH COLOUR		L.BLIGHT	P.VY	PLRV
ACOUSTIC			•	1300-3000	***	<<<	L.Y	S	L.Y	**	✓✓✓	N/A	NA
AMBITION			•	1300-3000	**	<<<	W	S	W	*	N/A	✓✓	N/A
ANNET		•	•	1300-2000	•	<<	Yrb	D	Y	***	✓✓✓	N/A	N/A
ARIZONA		•	•	1300-2000	**	<<<	Y	S	Y	**	✓✓	✓✓	✓✓
ARNOVA		•	•	1300-3000	**	<<<	Y	S	P.Y	***	✓✓	✓✓	✓✓
ASANTE			•	≥ 2300	**	<<	P	M	P.Y	***	✓	N/A	N/A
CAROLUS		•	•	1300-3000	**	<<<	R	S	L.Y	***	✓✓✓	✓✓	✓✓
CARUSO	•	•		1300-3000	**	<	Y	S	L.Y	**	✓✓✓	✓✓✓	✓✓✓
CHALLENGER		•	•	1300-3000	***	<<<	Y	S	L.Y	**	✓✓	N/A	N/A
CHULU	•	•	•	1500-3500	**	<<<	W.C	S	C	***	✓✓✓	N/A	N/A
CONNECT		•	•	1300-3000	**	<<<	Y	S	Y	***	✓✓✓	✓✓✓	✓✓✓
DERBY	•	•	•	1300-3000	•	<<<	Y	M	L.Y	*	✓✓	N/A	N/A
DESIREE		•	•	1800-2600	**	<<	R	M	L.Y	**	N/A	✓✓	N/A
DESTINY	•			1300-3000	**	<<	Y	M	Y	**	N/A	✓✓	N/A
DUTCH ROBUIN	•			1800-2600	**	<	R	M	P.Y	***	✓✓	N/A	N/A
EL-MUNDO			•	1300-3000	***	<<<	Y	S	L.Y	***	✓✓	✓✓✓	N/A
EVORA			•	1300-3000	**	<<<	L.Y	M	C	***	✓✓	N/A	N/A
FALUKA			•	1300-3000	•	<<<	Y	S	C	**	✓✓✓	✓✓	N/A
JELLY		•	•	1300-3000	***	<<<	Y	S	Y	***	✓✓✓	✓✓✓	N/A
KENYA BARAKA		•	•	1600-2700	**	<<	W	S	W	***	✓✓✓	N/A	N/A
KENYA KARIBU	•		•	1800-2800	**	<<	R	D	Y	***	✓✓✓	✓✓✓	✓✓✓
KENYA MAVUNO	•	•	•	1800-2800	***	<<	C	S	C	***	✓✓✓	✓✓✓	✓✓✓
KENYA MPYA		•	•	1400-3000	**	<<	C	S	C	***	✓✓✓	N/A	N/A
KENYA SIFA		•	•	1800-2800	**	<	P	M	C	***	✓✓✓	✓✓✓	✓✓✓
KERR'S PINK	•	•	•	1400-2700	•	<	P	D	C	***	✓✓✓	N/A	N/A
KONJO	•	•	•	1600-3500	**	<<	W	D	C	***	✓✓✓	✓✓	✓✓✓
KURODA		•	•	1300-3000	**	<<<	R	S	L.Y	***	✓✓	✓✓	N/A
LADY AMARILLA	•	•	•	1300-3000	•	<<<	Y	S	D.Y	***	✓✓✓	✓✓	N/A
LAURA		•	•	1300-3000	**	<<<	R	S	D.Y	***	✓✓	✓✓✓	✓✓✓
LENANA		•	•	1500-3500	**	<<<	W.C	S	C	***	✓✓✓	N/A	✓✓✓
MANITOU		•	•	1300-3000	**	<<<	R	S	P.Y	**	✓✓	✓✓	N/A
MARKIES	•	•		1300-3000	**	<<<	W	S	C	***	✓✓	✓✓	✓✓
MAYAN GOLD		•	•	1300-3000	**	<	Y	M	Y	***	✓✓	✓✓	✓✓
MILVA			•	1300-3000	**	<<<	Y	S	Y	***	✓✓✓	N/A	✓✓



Summary Table Continued...

MUSICA		•	•	1300-3000	***	<<<	Y	S	D,Y	*	✓✓✓	✓	N/A
NYOTA			•	1500-3500	***	<<<	W,C	S	C	***	✓✓✓	N/A	N/A
PANAMERA			•	1300-3000	***	<<<	Y	S	LY	**	✓	N/A	N/A
PURPLE GOLD	•			1800-3000	**	<	D,P	M	W	***	✓	N/A	✓✓
RODEO			•	1800-3000	***	<<<	R	S	Y	**	✓	N/A	N/A
ROYAL	•	•	•	1300-3000	**	<<<	Y	S	P,Y	**	✓	N/A	N/A
RUMBA	•			1300-3000	**	<<<	Y	S	LY	***	✓✓✓	✓✓✓	✓✓✓
RUDOLPH	•	•	•	1300-3000	**	<<<	R	S	W	***	✓	✓✓✓	N/A
SAGITTA	•	•	•	1300-3000	**	<<<	Y	S	LY	**	✓	✓✓✓	N/A
SARPO MIRA		•	•	1300-3000	**	<<<	R	S	P,Y	**	✓✓✓	✓✓✓	✓✓✓
SAVIOLA			•	1300-3000	**	<<<	Y	S	C	*	✓✓✓	✓✓✓	N/A
SHANGI		•	•	≥1500	*	<<	C	D	W	*	✓✓	N/A	N/A
SHEREKEA	•	•	•	1800-3000	**	<<<	R	D	C	***	✓✓✓	✓✓✓	✓✓✓
SIFRA			•	1800-3000	***	<<<	LY	S	C	**	✓	N/A	N/A
TAURUS	•			1300-3000	**	<<	Y	M	P,Y	***	✓	✓✓✓	N/A
TIGONI		•	•	1800-2600	**	<<	W	S	P,Y	***	✓	N/A	N/A
TOLUCA	•	•	•	1300-3000	***	<<	Y	S	LY	**	✓✓✓	✓✓✓	N/A
UNICA	•	•	•	1400-3500	*	<<<	R	S	C	***	✓	N/A	✓✓✓
VOYAGER		•	•	1300-3000	***	<<<	Y	S	Y	***	✓	N/A	N/A
WANIKU		•	•	1500-3500	**	<<<	W,C	S	C	***	✓✓✓	✓✓✓	N/A
ZAFIRA			•	1300-3000	***	<<<	Y	S	LY	**	✓✓	✓	✓✓

Key

TERM	Maturity	Disease Resistance & Tolerance levels	Disease attributes	Tuber Dormancy	Yield	Eye Depth	Tuber and Flesh Color
DEFINITION OF TERMS	Early (<3 months) Medium (3-4 months) Late (>4 months)	Low Medium High Information Not available	Tolerant Resistant Susceptible	Short (<1 Month) Medium (1-2 Months) Long (>2 Months) High (> 40 Tons/Ha) Medium (30-40 Tons/Ha) Low (<30 Tons/Ha)	Shallow Medium Deep	Shallow Medium Deep	Cream Cream White Red Dark Red Purple Dark Purple White Yellow Pale Yellow Light Yellow Yellow (red blotched) White, Cream Deep Yellow
SYMBOLS	• •• •••	✓ ✓✓ ✓✓✓	N/A Green Black Red	* ** ***	<<< << < S M D	C C,W R D,R P D,P W Y P,Y L,Y	Yr,b W,C D,Y

Note:

1. All varieties are susceptible to Bacterial Wilt (*Ralstonia Solanacearum*)
2. Indications for attributes are based on trials in the country of origin. However, In Kenya, performance trials have been done under both intensive and conventional management. Also not all varieties perform equally and performance may vary in different Counties; hence, farmers need to try small units before full production of any new variety



Table 2: Seed Potato producers and varieties

Name	Country/ County	Contacts	Varieties
ADC-Molo	Nakuru	0721-202565 adcmolo@gmail.com	Shangi, Sherekea, Dutch Robijn, Kenya Karibu, KenyaMpya, Asante, Desiree, Kenya Mavuno, Kenya Sifa and Tigoni
Agrico East Africa	Nairobi	0722-206179 info@agrico.co.ke	Markies, Arnova, Rudolph, Destiny, Ambition, Arizona, Manitou, Toluca, Saviola, Faluka, Carolus, Kuroda and Zafira
Den Hartigh	The Netherlands	Br.krijger@denhartigh-potato.nl	Connect and Caruso
Gen-Biotech Ltd	Kajiado	0739532993	Shangi
Grace Rono	Trans Nzoia	0722460326	Shangi
GTIL (Apical cuttings and Minituber Only)	Nairobi	0722 662037 kae@africaonline.co.ke	Konjo, Dutch Robijn, Unica and Shangi
Julius Kandie	Trans Nzoia	0720 874 576	Dutch Robijn
KALRO-Tigoni	Kiambu	0733834675/0727031783 kalro.tigoni@kalro.org	Shangi, Tigoni, Unica, Kenya Karibu, Annet, Sherekea, Kenya Mavuno, Dutch Robijn, Wanjiku, Chulu, Nyota, and Lenana
Danespo	The Netherlands	Kenya Highlands Seeds peter.francombe@khs.co.ke	Royal and Sarpo Mira
Kisima Farm/HZPCHollandB.V	Meru	0716-968766 kibet@kisima.co.ke	Asante, Sherekea, Sagitta, Taurus, Challenger, Panamera, Unica, Dutch robijn, Konjo and Voyager
Leah Rono	Nandi	0727 566988	Dutch Robijn
Savannah Fresh Hort. Farmers' Cooperative Society Ltd.	Meru	0721289617/ 0708347959	Dutch Robijn and Shangi
Starlight Cooperative society	Nakuru	0721109200	Shangi and Sherekea
Suera Farm /C. Meijer.B.V	Nyandarua	Susan Mureithi - 0706-186579 Suera.flowers@gmail.com	Musica, Acoustic and Lady Amarilla
Singus Enterprises	Nakuru	Ann Mbugua - 0722691245, mbuguanjeri@ymail.com	Shangi and Sherekea
Syngenta E.A Ltd/EuroPlant AardappelB.V/ Charvi Investment	Nairobi	0703-018000/0703019000 syngenta.east_afric@syngenta.com	Jelly, Rumba, Milva and Laura
Stet Holland B.V	The Netherlands	HoltslagHenk- Henk.Holtslag@stet-potato.com>	El Mundo

List as at July 2017



ACOUSTIC



- Use** : Table, firm cooking, Excellent taste
- Areas to be grown** : Suitable for all potato growing regions
- Maturity** : Medium (3-4 Months)
- Yield** : High (>40 tons/ha) under intensive management
- Tuber features** : Round oval tubers, uniform in grading
Light yellow skin
Shallow eyes
Light yellow flesh, good bruising resistance
- Tuber dormancy** : Medium(1-2 Months)
- Dry Matter** : 18%
- Plant description** : Acoustic is in height a medium variety with spreading stems, not a totally covered foliage.
Leaves are light green in color. It exhibits presence of lightly flowering pink to light purple flowers.
- Disease Resistance /Tolerance** : Acoustic has very high *phytophthora infestans* resistance medium resistance to PCN (Ro1 and Ro 2/3) and high resistance to wart disease.



AMBITION



Use : Table variety

Areas to be grown : Suitable for all potato growing regions

Maturity : Medium maturity (3-4 Months)

Yield : High (> 40tons/ha)

Tuber features : Large, uniform, long oval tubers
Shallow eyes
White skin
White flesh

Tuber dormancy : Short

Plant description : Ambition has good foliage development. It produces white flowers and is a good heat tolerant variety

Disease Resistance /Tolerance : Ambition has good resistance to *Fusarium* sp, *Erwinia* sp, Potato Cyst Nematode (PCN) Ro1 and 4 and Y^{ntm}-virus



ANNET



- Use** : Chips
Table variety
- Areas to be grown** : Medium to high altitude of 1300-2000 m.a.s.l. It does well in areas such as Nyandarua, Kiambu, Nyeri, Laikipia, Meru, Nakuru, Bomet, Narok, Kwale, Nandi, Kisii, Kericho, Elgeyo Marakwet, Uasin Gishu, Trans-Nzoia, West Pokot, Taita-Taveta and Cherangani hills.
- Maturity** : Early (\leq 3 Months)
- Yield** : Medium (30-35 tons/ha)
- Tuber features** : Round shaped
Deep eyes
Smooth yellow skin (red blotched)
Yellow flesh
- Tuber dormancy** : Long (2 months).
- Plant Description** : Annet is a semi erect tall variety (about 1 meter in height) with strong stems and light green medium sized leaves. It flowers moderately and the flowers are white.
- Disease resistance** : Annet is tolerant to Late blight.
- /Tolerance**



ARIZONA



Use : Chips
Table variety
Baking (good quality)

Areas to be grown : Suitable for all potato-growing areas.

Maturity : Medium maturity (3-4 Months)

Yield : High (>40 tons/ha)

Tubers features : Large, oval, tubers
Shallow eyes
Yellow skin
Yellow flesh

Dry matter : 17.2%

Tuber dormancy : Medium

Plant description : Arizona exhibits good initial development. The plant produces white flowers. It is high yielding and should not be stored for too long before planting

Disease resistance /Tolerance : Arizona has good resistance to Late blight and Viruses



ARNOVA



Use : Chips
 Table variety
 Firm in cooking; No traces of after cooking blackening

Areas to be grown : Suitable for all potato-growing areas

Maturity : Medium (3-4 Months)

Yield : High (>40 tons/ha)

Tubers features : Very large to large oval tubers
 Yellow, smooth to medium smooth skin
 Shallow eyes
 Pale Yellow flesh
 Good resistance to internal bruising

Dry matter : 18.2%

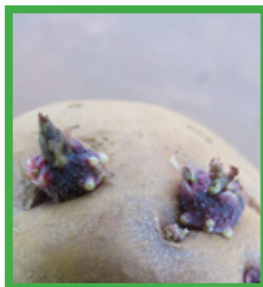
Tuber dormancy : Medium to long.

Plant description : Arnova is a tall variety with semi-erect stems and medium to large light green leaves. It flowers profusely and the flowers are white. It has good heat tolerance.

Disease resistance /Tolerance : Arnova is Fairly susceptible to Leaf blight and susceptible to Virus A, It is moderately resistant to Tuber blight, Virus Yⁿ, Potato Virus X, Common scab, Powdery scab and Y^{ntn} Virus. It has good resistance to Leaf Roll and is resistant to Ro1 of the Potato Cyst Nematode



ASANTE



Use : Table variety

Areas to be grown : High altitude of ≥ 2300 m.a.s.l. is the best. It does well in areas such as Nyandarua, Kiambu, Nyeri, Meru, Nakuru, Bomet, Uasin Gishu, Trans-Nzoia, West Pokot and Cherangani hills

Maturity : Medium (3-4 Months)

Yield : Medium to High (35-45 t/ha)

Tuber features : Round shaped
Medium eyes
Smooth Pink skin
Pale yellow flesh

Tuber dormancy : Long (4-4.5 months)

Plant description : Asante is an erect tall variety (slightly below 1 metre in height) with strong stems and light green broad leaves. It flowers moderately and the lowers are pink

Disease resistance : Asante is tolerant to Late blight but can suffer late season infections.
/Tolerance.





Kisima Farm Ltd seed potatoes are Kenya's best brand of seed potatoes

We supply high quality, certified seed potatoes that a farmer can expect increased yields.

For more information, call us on our hotline
0716968766/ 0722509830

CAROLUS



- Use** : Chips
Table variety
- Areas to be grown** : Timau, Tigoni, Molo, Narok, Bomet, Timboroa and all regions suitable for potato production.
- Maturity** : Medium (3-4 Months)
- Yield** : High (>40 tons/ha)
- Tuber features** : Medium size oval tubers
Very shallow red eyes
Red partial colored skin
Light yellow
- Tuber dormancy** : Long
- Plant description** : Carolus is a tall erect plant with broad dark green leaves. It flowers moderately and the flowers are violet.
- Disease resistance /Tolerance** : Carolus is susceptible to PCN Ro 1, Ro 4 and Common scab. It has medium to high tolerance to Potato Leaf Roll Virus but immune to Foliage and Tuber blight and Virus Yⁿ and is quite resistant to Virus Y^{ntm}.





Better yield and quality with GRIMME potato equipment



GRIMME cultivator for good soil preparation

- Perfect seed bed
- Less clods



GRIMME potato planter for precision planting

- Accurate planting
- Increasing yields
- Less use of seed



GRIMME potato windrower for gentle harvesting

- Proven technology
- Less bruising and damage to the crops

GRIMME Landmaschinenfabrik GmbH & Co. KG
Hunteburger Straße 32 · 49401 Damme · Germany
Phone +49 5491 666-0 · Fax +49 5491 666-2298
grimme@grimme.de · www.grimme.com

GRIMME

CARUSO



Use : Crisps
Chips
Dehydrate products (Flakes and granulate)
and has low sugar content and beautiful
frying color.

Areas to be grown : Suitable for all potato-growing areas

Maturity : Medium(3-4 Months)

Yield : Low to Medium (25-35 tons/ha)

Tubers features : Short oval tubers
Shallow eyes
Yellow skin
Light yellow flesh

Tuber dormancy : Medium

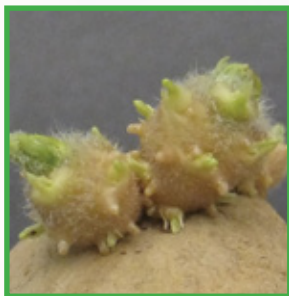
Dry matter content : 24-25%

Plant description : Caruso is an intermediate variety type,
high yielding main crop variety with low
reducing sugar content.

Disease resistance /Tolerance : Caruso is resistant to PCN Ro1 and 4, PVY,
Leaf Roll and also highly resistant to Late
blight, Tuber blight, Common scab and
Internal rust spot.



CHALLENGER



Use : Chips
Table variety

Areas to be grown : Timau, Tigoni, Molo, Narok, Bomet, Timboroa and all regions suitable for potato production.

Maturity : Late (>4 Months)

Yield : High (>40 tons/ha)

Tuber features : Long oval to long tubers
Medium smooth bright yellow skin
Shallow eye depth
Light yellow flesh

Tuber dormancy : Medium long

Plant description : Challenger is a tall variety. It flowers profusely and the flowers are white.

Disease resistance /Tolerance : Challenger has good resistance to Common and Powdery scab, medium resistant to Late blight, quite resistant to Early blight and resistant to wart disease.



CHULU



- Uses** : Chips
Crisp
Table variety
- Areas to be grown** : Highland's tropics 1500-3500Masl It does well in areas such as Meru, Kiambu, Molo, Narok, Bomet, Nyeri, Taveta, Thika and all regions suitable for potato production.
- Maturity** : Medium (3-4 Months)
- Yield** : High (>40tons /ha)
- Tuber features** : Oblong shaped,
White cream skin colour
Shallow pinkish eyes
Cream flesh
- Tuber dormancy** : Long (2.5-3 Months)
- Plant description** : Chulu is a medium tall potato plant with strong semi erect stems and dark green medium size leaves with white flowers. It is tolerant to heat
- Disease Resistance /Tolerance** : Chulu is tolerant to Late blight & Potato Virus X



CONNECT



Use : Table Variety
Chips
A table potato with short cooking time, mealy and free of discoloration

Areas to be grown : Suitable for all potato-growing areas.

Maturity : Medium (3-4 Months)

Yield : High (>40 tons/ha)

Tubers features : Large, round oval, tubers uniform in shape
Yellow skin
Very shallow eyes
Yellow flesh color
Good resistance to internal bruising

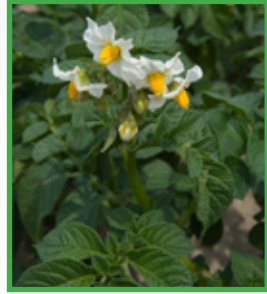
Tuber dormancy : Long dormancy.

Plant description : Connect is a tall plant with rapid development and with good ground cover. It has dark green leaves and it does not flower. It has good tolerance to drought

Disease resistance : Connect is resistant to Late blight and viruses
/Tolerance



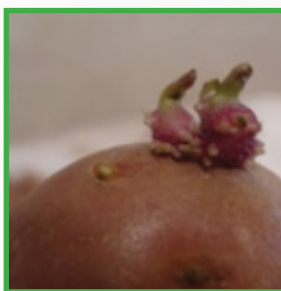
DERBY



- Uses** : Chips
Crisps
Table variety
- Areas to be grown** : Suitable for all potato-growing areas
- Maturity** : Early (≤ 3 Months)
- Yield** : High (> 40 tons/ha) under intensive management
- Tuber features:** Large oval
Yellow skin
Medium eyes
Light yellow flesh
- Tuber Dormancy** : Short
- Plant description** : Derby is medium in height with leaf type foliage structure and semi-upright growth. The variety exhibits low frequency of flowers.
- Disease resistance /Tolerance** : Derby has good resistance to Late blight and Scab, It is resistant to PCN (*Globodera rostochiensis* species) and Wart disease *Fysio 1 and 2*



DESIRE



Use : Chips
Table variety

Areas to be grown : High altitude of 1800-2600 m.a.s.l. is the best. It does well in areas such as Kiambu, Nyandarua, Nyeri, Laikipia, Meru, Nakuru, Bomet, Narok, Kwale, Nandi, Kisii, Kwale, Kericho, Elgeyo Marakwet, Nandi, Uasin Gishu, Trans-Nzoia, West Pokot, Taita-Taveta and Cherangani hills.

Maturity : Early to Medium (2.5 -3.5 Months)

Yield : Medium (35-40 tons/ha)

Tubers Features : Long oval
Smooth red skin,
Medium eyes
Light yellow flesh

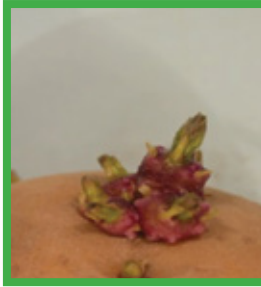
Tuber dormancy : Medium (\leq 2 Months).

Plant Description : Desiree is an erect medium tall variety (about 0.7 meter in height) with strong stems and dark green medium sized leaves. It flowers scarcely and the flowers are light pink.

Disease resistance /Tolerance : Desiree is moderately tolerant to Potato Virus Y (PVY)



DESTINY



- Use** : Crisps
- Areas to be grown** : Suitable for all potato-growing areas
- Maturity** : Medium (3-4 Months)
- Yield** : Medium (30 - 40 tons/ha),
- Tuber features** : High numbers of round/oval tubers
Yellow skin
Yellow flesh color
Medium red eyes
- Tuber dormancy** : Medium dormancy
- Dry matter content** : 23.7%
- Plant description** : Destiny has good initial development, it has dark green leaves and light to dark purple flowers
- Disease resistance /Tolerance** : Destiny has good resistance to Potato Virus Y, Potato Virus X, PCN, Early blight and *Erwinia* sp.



DUTCH ROBIJN



Use : Crisps

Area to be grown : High altitude of 1800-2600 m.a.s.l. is the best. It does well in areas such as Kiambu, Nyandarua, Nyeri, Meru, Nakuru, Bomet, Uasin Gishu, Trans-Nzoia, West Pokot, Taita-Taveta and Cherangani hills.
Best areas are Bomet County.

Maturity : Medium (3-4 Months)

Yield : Low (\leq 30 tons/ha)

Tubers features : Round shaped
Rough red skin
Medium deep eyes
Pale yellow flesh

Tuber dormancy : Long (3.5-4.5 Months)

Plant Description : Dutch robijn is an erect medium tall variety (about 0.7 meter in height) with strong stems and dark green medium sized leaves. It flowers scarcely and the flowers are white with a light pink hue.

Disease resistance /Tolerance : Dutch Robijn is moderately resistant to Late blight.



EL-MUNDO



Use : Table variety

Areas to be grown : Suitable for all potato-growing areas.

Maturity : Late (>4 Months)

Yield : High (>40 tons/ha) under intense management.

Tubers features : Long oval, medium in size, uniform in shape
Yellow skin
Shallow eyes
Light yellow flesh

Tuber dormancy : Long

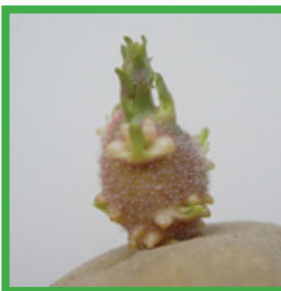
Dry matter : 18%

Plant description : El-mundo grows well and develops strong foliage and therefore, it should not be over fertilized. The use of organic manure is not recommended with this variety. It is tolerant to drought.

Disease resistance /Tolerance : El- Mundo has good resistance to Late blight and is resistant to PVY.



EVORA



Use : Table variety

Areas to be grown : Timau, Tigoni, Molo, Narok, Bomet, Timboroa and all regions suitable for potato production.

Maturity : Medium (3-4 months)

Yield : High (>40 tons/ha)

Tuber features : Large oval tubers
Bright, smooth light yellow skin
Medium eyes

Tuber dormancy : Long

Plant description : Evora has high foliage development with high number of red violet flowers.

Disease resistance /Tolerance : Evora has medium resistance to Common and Powdery scab, Early blight and Late blight.



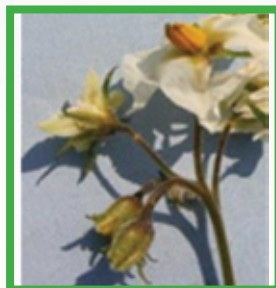
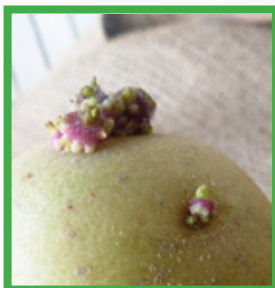
FALUKA



- Use** : Table variety
- Areas to be grown** : Suitable for all potato-growing areas.
- Maturity** : Early (\leq 3months)
- Yield** : High (>40 tons/ha)
- Tubers features** : Large, long oval tubers, uniform in shape
Yellow skin
Shallow eyes
Cream flesh color
Good resistance to internal bruising
- Tuber dormancy** : Medium dormancy
- Dry matter content** : 17%
- Plant description** : Faluka is a tall variety with semi-erect stems. It has medium to large green leaves. It flowers profusely and the flowers are white. It has good heat tolerance.
- Disease resistance /Tolerance** : Faluka is susceptible to Leaf blight and Tuber blight; It has good resistance to Virus X and Virus Yⁿ and is moderately resistant to Common scab.



JELLY



Use : Chips
Table variety
Very good table quality and excellent frying quality

Areas to be grown : Suitable for all potato-growing areas

Maturity : Late (>4 Months)

Yield : High (>40 tons/ha)

Tubers features : Oval medium to big sized tubers
Yellow, smooth to slightly netted skin
Very shallow eye depth
Pure yellow colored flesh; has low raw discoloration

Tuber dormancy : Medium

Plant description : Jelly is a tall variety with erect stems. Leaves are large and green in colour. It flowers scarcely and the flowers are white. It has high tolerance drought and heat.

Disease resistance /Tolerance : Tolerant to Late blight, Black leg, *Rhizoctonia* sp, Common scab, Bacterial wilt, Potato Virus Y (PVY), Cyst Nematodes and potato wart disease.



KENYA BARAKA



Use : Table variety
Chips

Areas to be grown : High altitude of 1600-2700 m.a.s.l. is the best. It does well in areas such as Nyandarua, Kiambu, Nyeri, Laikipia, Meru, Nakuru, Bomet, Narok, Kwale, Nandi, Kisii, Kericho, Elgeyo Marakwet, Uasin Gishu, Trans-Nzoia, West Pokot, Taita-Taveta and Cherangani hills

Maturity : Medium (3 Months)
Yield : Medium (30-40 tons/ha)
Tubers : Oval shaped
Rough white skin
Shallow eyes
White flesh

Tuber dormancy : Long (3.5-4.5 Months).

Plant Description : Kenya Baraka is an erect tall variety (about 1 meter in height) with strong stems and green broad leaves. It flowers moderately and the flowers are white.

Disease resistance : Kenya Baraka is tolerant to Late blight.
/Tolerance



SGS

WHEN YOU NEED TO BE SURE inspection, verification, testing and certification

The SGS Group is the world's leading inspection, verification, testing and certification company. SGS is recognized as the global benchmark for quality and integrity.

SGS Kenya has ISO 17025 accredited laboratories which demonstrate our effectiveness to properly execute testing methods, reporting practices, inspection routines, data validation and employee competence.

- Precision farming and soil fertility management services**
- Optimize and improve your crop development, increase growth and ensure sustainability with effective nutrient requirements and fertilizer application.
- GPS soil sampling
 - Soil and leaf/tissue analysis
 - Soil fertility correction and management
 - Fertilizer testing and field fertilizer trials
 - Irrigation water testing
 - Precision farming support
 - Consulting

Crop protection

Develop and register your agricultural inputs to ensure efficacy, safety and regulatory compliance

- Field trials (R&D, PCPB registration, efficacy, demonstration)
- Pesticide residue analysis (MRLs) and trials
- Product chemistry
- Regulatory affairs/product registration
- MRL testing on fresh produce

Pest control and fumigation services

- Fumigation of agri. Products: grains, pulses, coffee etc
- Treatment of products against insects and mites
- Treatment of bulk and bagged products in stockpiles, silos and warehouses
- Fumigation in transit
- Fumigation of commercial, storage, and industrial premises etc

Stock monitoring services



SGS

Contact us

SGS Kenya Limited,
Victoria Towers, 2nd floor,
Kilimanjaro Avenue, Upper Hill,
PO Box 72118, Nairobi 00200
T: +254 20 273 3703/19
F: +254 20 273 3664,
E: enquiries.kenya@sgs.com
W: www.sgs.com

KENYA KARIBU



Use : Table variety
Crisps

Areas to be grown : Altitude of 1800-2600 m.a.s.l is the best. It does well in areas such as Nyandarua, Kiambu, Nyeri, Laikipia, Meru, Nakuru, Bomet, Narok, Kwale, Nandi, Kisii, Kericho and Cherangani hills.

Maturity : Medium (3-4 Months)

Yield : Medium to High (35-45 tons/ha)

Tubers features : Round in shape
Smooth red skin
Deep eyes
Yellow flesh

Tuber dormancy : Long (3.5 Months)

Plant description : Kenya Karibu is an erect tall variety (slightly above 1 metre in height) with strong stems and dark green narrow pointed leaves. It flowers profusely and the flowers are pink.

Disease resistance /Tolerance : Kenya Karibu is tolerant to Late blight and most of the potato viruses.



KENYA MAVUNO



- Use** : Chips
Crisps
Table variety
- Areas to be grown** : High altitude of 1800-2800 m.a.s.l. is the best. It does well in areas such as Nyandarua, Kiambu, Nyeri, Laikipia, Meru, Nakuru, Bomet, Narok, Kwale, Nandi, Kisii, Kericho, Elgeyo Marakwet, Uasin Gishu, Trans-Nzoia, West Pokot, Taita-Taveta and Cherangani hills.
- Maturity** : Late (>4 Months)
- Yield** : Medium (30-40 tons/ha)
- Tuber features** : Oval shaped
Smooth cream skin
Shallow eyes
Cream flesh
- Tuber dormancy** : Long (2.5-3 Months).
- Plant description** : Kenya Mavuno is a semi erect tall variety (about 1 meter in height) with strong stems and green medium sized leaves. It flowers profusely and the flowers are white.
- Disease resistance /Tolerance** : Kenya Mavuno is tolerant to Late blight and most potato virus



KENYA MPYA



Use : Table variety
Chips

Areas to be grown : Medium to high altitude of 1400-3000 m.a.s.l. It does well in areas such as Nyandarua, Kiambu, Nyeri, Laikipia, Meru, Nakuru, Bomet, Narok, Kwale, Nandi, Kisii, Kericho, Elgeyo Marakwet, Uasin Gishu, Trans-Nzoia, West Pokot, Taita-Taveta and Cherangani hills.

Maturity : Medium (3-4 Months)

Yield : Medium (35-45 tons/ha)

Tuber features : Oval shaped tubers
Smooth cream Skin
Shallow pink eyes
Cream flesh

Tuber dormancy : Long (2.5-3 Months)

Plant Description : Kenya Mpya is a semi- erect tall variety (about 1 metre in height) with strong stems and light green medium-sized leaves. It flowers scarcely and the flowers are white.

Disease resistance : Kenya Mpya is resistant to Late blight.

/Tolerance



KENYA SIFA



Use : Table variety
Chips

Areas to be grown : High altitude of 1800-2800 m.a.s.l. is the best. It does well in areas such as Nyandarua, Kiambu, Nyeri, Meru, Nakuru, Bomet, Uasin Gishu, Trans-Nzoia, West Pokot, Taita-Taveta and Cherangani hills

Maturity : Medium (3-4 Months)

Yield : Low (<30 tons/ha)

Tuber features : Flat round in shape
Smooth pink skin
Medium deep eyes
Cream flesh

Tuber dormancy : Long dormancy (4-4.5 Months).

Plant description : Kenya Sifa is an erect tall variety (slightly above 1 meter in height) with strong stems and dark green broad leaves. It flowers moderately and the flowers are light purple.

Disease resistance /Tolerance : Kenya Sifa is tolerant to Late blight and most potato viruses.



KERR'S PINK



Use : Chips
Crisps
Table variety

Areas to be grown : Medium to high altitude of 1400-2700 m.a.s.l. It does well in areas such as Nyandarua, Kiambu, Nyeri, Meru, Nakuru, Bomet, Uasin Gishu, Trans-Nzoia, West Pokot, Taita-Taveta and Cherangani hills.

Maturity : Early (≤ 3 Months)

Yield : Low (< 30 tons/ha)

Tuber features : Round shaped tubers
Smooth pink skin
Deep eyes
Cream flesh

Tuber dormancy: Long (2-3 Months)

Plant description : Kerr's Pink is a semi erect short variety (about 0.5 meter in height) with strong stems and dark green medium sized leaves. It flowers profusely and the flowers are white.

Disease resistance : Kerr's Pink is susceptible to Late blight.
/Tolerance



KONJO



- Use** : Chips
Crisps
Table variety
- Areas to be grown** : Highland's tropics 1600-3500Masl It does well in areas such as Timau, Tigoni, Molo, Narok, Bomet, Timboroa and all regions suitable for potato production.
- Maturity** : Medium (3-4 months)
- Yield** : Medium (>40 tons/ha)
- Tuber features** : Oblong shaped
White predominant and pink secondary skin color
Deep eyes
Cream Flesh
- Tuber dormancy** : Long (2.5-3 Months)
- Plant description** : Konjo is a medium tall potato plant with strong semi erect stems and dark green medium sizeleaves. It has pink flowers.
- Disease resistance /Tolerance** : Konjo is resistant to Late blight and Potato Virus X (PVX), It is highly resistant to Potato Leaf Roll Virus (PLRV), moderately susceptible to Potato Virus Y (PVY) and to Root Knot Nematode (RKN)



Premium pre fried chips and fresh potato products


TASTY!



Place your order online now!

www.newhollandchips.com

sales@newhollandchips.com

 + 254 (0)798 983 995



New Holland Chips

KURODA



- Use** : Chips
Table variety
- Areas to be grown** : Timau, Tigoni, Molo, Narok, Bomet, Timboroa and all regions suitable for potato production.
- Maturity** : Medium (3-4 Months)
- Yield** : High (>40 ton/ha)
- Tuber features** : Large oval tubers
Red skin
Shallow eyes
Light yellow flesh
- Tuber dormancy** : Long
- Dry matter content** : 21%
- Plant description** : Kuroda has normal initial plant development with good ground coverage. It is a semi erect high plant with large leaf size and purple flowers. The leaves are dark green. It has excellent heat tolerance
- Disease resistance /Tolerance** : Kuroda is resistant to PCN Ro 1 and 4, quite susceptible to Late blight (foliage and tuber) and quite resistant to Virus Yⁿ and Virus Y^{ntn}.



LADY AMARILLA



Use : Chips
Crisps
Table

Areas to be grown : Timau, Tigoni, Molo, Narok, Bomet, Timboroa and all regions suitable for potato production.

Maturity : Medium (3-4 Months)

Yield : High (>40 tons/ha)

Tuber features : Long-to-long oval
Yellow skin
Shallow eye depth
Deep yellow flesh

Tuber dormancy : Long

Plant description : Lady Amarilla is a medium tall variety with semi-erect stems. Leaves are large and light green to green in colour. It flowers scarcely and the flowers are white.

Disease resistance /Tolerance : Lady Amarilla has good resistance to PCN Ro 1 and 4, PVY^{ntn} and PVY_{A and X}. It has moderate resistance to Common scab and susceptible to Foliage blight



LAURA



Use : Chips

Areas to be grown : Timau, Tigoni, Molo, Narok, Bomet, Timboroa and all regions suitable for potato production.

Maturity : Medium (3-4 Months)

Yield : High (>40tons/ha) under intensive management

Tuber features : Oval-long tubers
Red smooth skin,
Shallow eyes
Deep yellow flesh

Tuber dormancy : Long

Plant description : Laura is a medium to high plant. Its flowers are white with moderate flowering frequency. The variety has good resistance to heat and drought.

Disease resistance /Tolerance : Laura is resistant to PCN- Ro 1-5, has high resistance to Potato Leaf Roll Virus, Very high resistance to Potato Virus Y(PVY), medium to high resistance to Tuber blight and Common scab and medium resistance to Foliage blight.



LENANA



Uses : Chips
Crisps

Areas to be grown : Highland's tropics 1,500-3,500Masl. It does well in areas such as Meru, Tigoni, Molo, Narok, Bomet, Timboroa, Marakwet and all regions suitable for potato production.

Maturity : Medium (3-4 Months)

Yield : High(>40 tons/ha)

Tuber features : Oblong shaped,
Cream white skin colour
Shallow eyes
Cream flesh

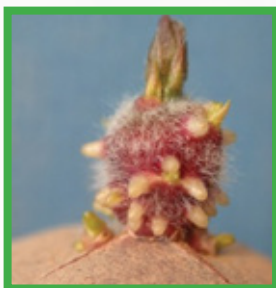
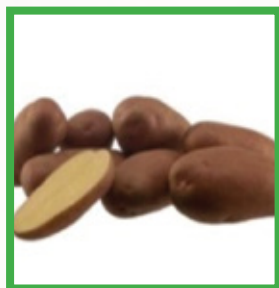
Tuber dormancy : Long (2.5-3 Months)

Plant description : Lenana is a medium tall potato plant with strong semi erect stems and dark green medium size with white flowers.

Disease Resistance /Tolerance : Lenana is tolerant to Late blight, Potato Virus X & Potato Leaf Roll Virus



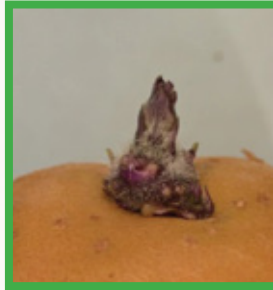
MANITOU



- Use** : Chips
Table variety
- Areas to be grown** : Suitable for all growing regions
- Maturity** : Medium (3-4 Months)
- Yield** : High (>40 tons/ha).
- Tuber features** : Oval to long oval tuber (uniform in grading),
Red smooth skin
Shallow eyes
Pale yellow flesh
Good resistance to internal bruising.
- Tuber dormancy** : Medium dormancy
- Dry matter content** : 20%
- Plant description** : Manitou is a tall variety with erect to semi-erect stems. Leaves are large and light to green in colour. It flowers profusely and the flowers are violet.
- Disease resistance /Tolerance** : Manitou is susceptible to Leaf blight, has good resistance to Tuber blight and Virus Yⁿ, moderate resistance to Virus X and Common scab, resistant to Ro1 of the Potato Cyst Nematode and immune to wart disease.



MARKIES



Use : Chips
Crisps

Areas to be grown : Suitable for all growing regions

Maturity : Late (>4 Months)

Yield : High (40 tons/ha)

Tubers features : Large, oval to long oval tubers, uniform in shape
White skin
Shallow eyes
Cream flesh
Good resistance to internal bruising

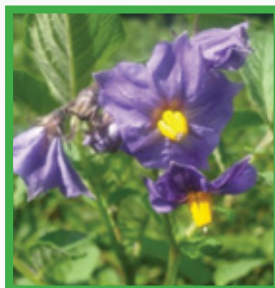
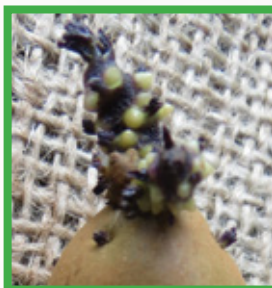
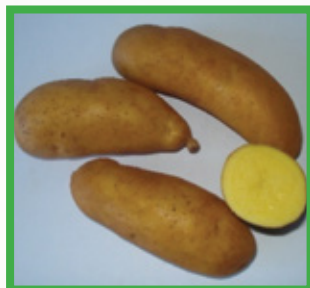
Tuber dormancy : Long dormancy

Plant description : Markies is an erect tall variety with large green flowers are white. The variety has good heat tolerance

Disease resistance /Tolerance : Markies has fairly good resistance to Leaf blight, Tuber blight and Virus Y, moderate resistance to Leaf Roll, good resistance to Virus A and Virus X, resistant to Ro1 of the Potato Cyst Nematode, Fairly susceptible to Common scab.



MAYAN GOLD



Use : Chips
Table Variety

Areas to be grown : Medium and high altitude of 1500≥ m.a.s.l.
It does well in areas such as Nyandarua, Kiambu, Nyeri, Laikipia, Meru, Nakuru, Bomet, Narok, Kwale, Nandi, Kisii, Kericho, Elgeyo Marakwet, Uasin Gishu, Trans-Nzoia, West Pokot, Taita-Taveta and Cherangani hills.

Maturity : Medium (3-4 Months)

Yield : Low (<30 tons/ha)

Tubers features : Long oval tubers
Rough yellow skin
Medium eyes
Yellow flesh

Tuber dormancy : Long (2 Months)

Plant description : Mayan Gold is a semi erect medium variety (about 0.6 meter in height) with strong stems and light green narrow leaves. It flowers moderately and the flowers are purple.

Disease resistance /Tolerance : Mayan Gold is moderately resistant to Late blight, Potato Virus Y (PVY) and Potato Leaf Roll Virus (PLRV)



MILVA



Use : Table Variety

Areas to be grown : Timau, Tigoni, Molo, Narok, Bomet, Timboroa and all regions suitable for potato production.

Maturity : Medium (3-4 Months)

Yield : High (>40 tons/ha) under intensive management

Tuber features : Oval tubers
Yellow smooth skin, seldom slightly netted
Shallow eyes
Pure yellow flesh

Tuber dormancy : Long

Plant description : Milva has a medium plant height. It flowers moderately and the flowers are white. The variety has good tolerance to heat and drought

Disease resistance /Tolerance : Milva has high resistance to PCN- Ro 1 and 4, medium to high resistance to Potato Leaf Roll Virus and high resistance to Late blight, Black leg and Common scab.







Say
growth,
say **Agrico.**



AGRICO EAST AFRICA OFFERS HIGH QUALITY SEED POTATOES

Agrico East Africa has 13 approved seed varieties in the Kenyan market, all high quality high yielding seed potato varieties originating from Holland. A selection of our top-performers in Kenya:

	Variety	Maturing	Main Characteristics
	Destiny	Early variety (±90 days)	Early maincrop suitable as a crisping and ware variety with a good yield and a good heat tolerance.
	Manitou	Early variety (±90 days)	Maincrop ware variety with an attractive red skin, a high yield and very suitable for home fries.
	Markies	Late variety (±100 days)	High-yielding all-round late maincrop variety for fresh fries, crisping, fast food (QSR market) and fresh consumption.
	Rudolph	Midseason variety (±95 days)	A maincrop ware variety with an attractive red-skin, a good heat tolerance and a very high yield.

Agrico East Africa

Contact us on email: info@agrico.co.ke, www.agrico.nl

Tel: +254 20 354 0568 / +254 20 2400 879 / +254 722 206 179

Offices at Baba Dogo Road, Ruaraka, Nairobi



MUSICA



Use : Chips
Table variety
Has an excellent taste

Areas to be grown : Suitable for all growing regions

Maturity : Late (>4 Months)

Yield : High (>40 tons/ha) under intensive management

Tubers features : Large long oval tubers, Uniform in grading
Yellow, smooth to medium smooth skin
Shallow eyes
Deep yellow flesh
Good resistance to internal bruising

Tuber dormancy : Short

Dry matter : 19%

Plant description : Musica is a medium to tall variety with semi-erect spreading stems. Leaves are light green in colour. It exhibits absence or very low flowering frequency. The flowers are white.

Disease resistance /Tolerance : Musica is susceptible to Leaf blight, good resistance to Potato Virus X, Virus Yⁿ and Common scab, immune to wart disease, resistant to Ro1 and Ro2 and 3 of the Potato Cyst Nematode.



NYOTA



Uses : Table variety

Areas to be grown : Highland's tropics 1500-3500Masl. It does well in areas such as Meru, Limuru, Molo, Narok, Bomet, Marakwet, Nandi, Meru and all regions suitable for potato production.

Maturity : Medium (3-4 Months)

Yield : High (>40 tons/ha)

Tuber features : Oblong shaped,
White cream skin
Shallow pinkish eyes
Cream flesh

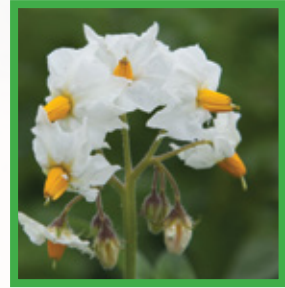
Tuber dormancy : Long (2.5-3 Months)

Plant description : Nyota is a medium tall potato plant with strong semi erect stems and dark green medium size leaves with pink flowers. It is tolerant to heat

Disease Resistance /Tolerance : Nyota is tolerant to Late blight



PANAMERA



Use : Table variety

Areas to be grown : Timau, Tigoni, Molo, Narok, Bomet, Timboroa and all regions suitable for potato production.

Maturity : Late (>4 Month)

Yield : High (>40 tons/ha)

Tuber features : Large oval tubers
Very bright and smooth yellow skin
Shallow eyes

Tuber dormancy : Medium dormancy

Plant description : Panamera has very high and dense foliage with high number of white flowers

Disease resistance /Tolerance : Panamera has good resistance to Late blight, Common and Powdery scab, wart disease and Early blight.



PURPLE GOLD



Use : Crisps

Areas to be grown : High altitude of 1800-3000 m.a.s.l. is the best. It does well in areas such as Nyandarua, Kiambu, Nyeri, Meru, Nakuru, Bomet, Uasin Gishu, Trans-Nzoia, West Pokot, Taita-Taveta and Cherangani hills.

Maturity : Medium (3-4 Months)

Yield : Low (<30 tons/ha)

Tuber features : Round tubers,
Smooth dark purple skin
Medium eye depth
White flesh

Tuber dormancy : Long (4-4.5 Months)

Plant description : Purple Gold is a semi- erect tall variety (slightly below 1 metre in height) with moderately strong stems and dark green medium-sized leaves. It flowers moderately and the flowers are purple.

Disease resistance /Tolerance : Purple gold is moderately resistant to Late blight, PLRV and resistant to Potato Virus X (PVX).



RODEO



Use : Table variety

Areas to be grown : Timau, Tigoni, Molo, Narok, Bomet, Timboroa and all regions suitable for potato production

Maturity : Late (>4 Months)

Yield : High (>40 tons/ha)

Tuber features : Medium to big size
Red skin
Shallow eyes
Yellow Flesh

Tuber dormancy : Medium dormancy

Dry Matter content: 22%

Plant description : Rodeo has high foliage development. It flowers profusely and the flowers are violet

Disease resistance : Rodeo has good resistance to scab, It is resistant to Wart disease, has medium resistance to Late blight and high resistance to Early blight

/Tolerance



ROYAL



Use : Chips
Table variety
Crisp, flakes and granulate

Areas to be grown : Suitable for all potato-growing areas

Maturity : Medium (3-4 Months)

Yield : High (>40 tons/ha) under intense management)

Tubers features : Large, round-oval tubers
Yellow skin
Shallow eyes
Pale yellow-to-yellow flesh
Good resistance to internal bruising,

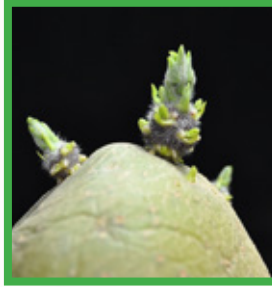
Tuber dormancy : Medium dormancy

Plant description : Royal has dark green leaves and in most cases no flowering occurs, flowers are white with yellow tips.

Disease resistance: Royal is resistant to nematodes and wart diseases and has medium resistance to Late blight and scab.
/Tolerance



RUMBA



- Use** : Crisps
Excellent frying color and taste with low sugar content
- Areas to be grown** : Suitable for all potato growing
- Maturity** : Medium (3-4 Months)
- Yield** : High (>40 tons/ha)
- Tubers feature** : Short-oval in shape tubers, (uniform grading)
Yellow slightly netted skin
Shallow medium eye depth
Light yellow flesh
- Tuber dormancy** : Long dormancy.
- Dry Matter content** : High
- Plant description** : Rumba has white flowers with yellow tip.
It has good tolerance to drought.
- Disease resistance /Tolerance** : Rumba has high resistance to Late blight, Potato Virus Y, and Potato Leaf Roll Virus.





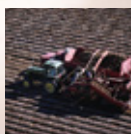
IPM POTATO GROUP

QUALITY IN THE BREED | QUALITY IN THE SEED



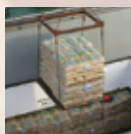
BREEDING

Creating varieties for every segment of the industry



SEED PRODUCTION

High quality Kenyan seed from our operations in Meru

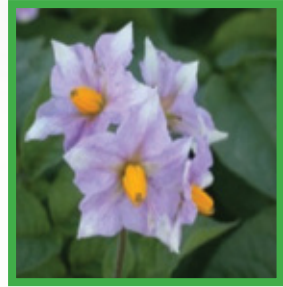
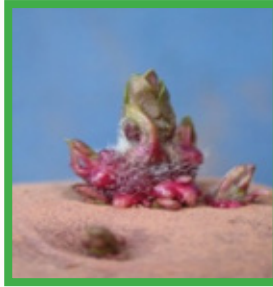


SALES & DISTRIBUTION

New Varieties arriving in 2018

View our variety catalogue at ipmpotato.com

RUDOLPH



- Uses** : Table variety
Chips
Crisp
- Areas grown** : Suitable for all potato-growing areas.
- Maturity** : Medium (3-4 Months)
- Yield** : High (>40 tons/ha)
- Tubers features** : Large oval to round oval tubers, uniform in shape
Red smooth to medium smooth skin
Rather shallow eyes
White flesh
Moderately resistant to internal bruising
- Tuber dormancy** : Long
- Dry Matter content** : 20%
- Plant description** : Rudolf is an erect tall variety with medium to large dark green leaves. It flowers profusely and the flowers are pink.
- Disease resistance /Tolerance** : Rudolf is susceptible to Leaf blight, Common scab and PVY, has good resistance to Tuber blight, moderate resistance to Potato Virus X and immune to wart disease.



SAGITTA



Use : Table variety
Chips
Crisps

Areas to be grown : All regions suitable for potato production

Maturity : Medium (3-4 Months)

Yield : High (>40 tons/ha) under intensive production

Tubers features : Oval tubers
Yellow skin
Shallow eyes
Light yellow flesh

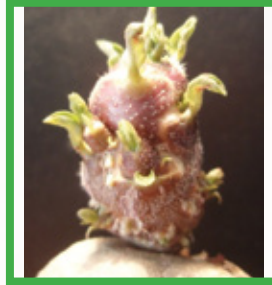
Tuber dormancy : Medium dormancy

Plant description : Sagitta is a medium to tall plant with intermediate type foliage structure and high frequency of pink flowers. It has semi upright growth habit and medium thick stems.

Disease resistance /Tolerance : Sagitta is resistant to PCN types *Globodera rostochiensis*, and Wart disease *fysio 1*. It is highly resistant to Spraing, Tuber blight, and PVY^{ntn}, It is tolerant to PVY^{ntn} in tuber, moderate resistant to Foliage blight and Common scab and good resistance to Powdery scab.



SARPO MIRA



Use : Chips
Table variety(tasty and floury tubers)
Flakes

Areas to be grown : Suitable for all potato-growing areas

Maturity : Medium (3 to 4 Months)

Yield : High (>40 tons/ha)

Tubers features : Large, long-oval tubers uniform in shape
Red skin
Shallow eyes
Pale yellow flesh

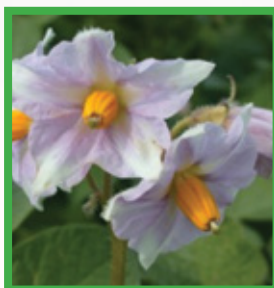
Tuber dormancy : Medium dormancy

Plant description : Sarpo Mira grows very tall with vigorous weed suppressing foliage. It has pink flowers. The variety is high yielding and has good tolerance to drought

Disease resistance: Sarpo mira has extremely good resistance to
/Tolerance Late blight (no spraying against blight needed) and Virus.



SAVIOLA



Use : Table variety(firm after cooking)

Areas to be grown : Suitable for all potato-growing areas

Maturity : Medium (3-4 Months)

Yield : High (>40 tons/ha)

Tubers features : Large, Long oval tubers.uniform in shape
Yellow skin
Very shallow eyes
Cream flesh

Tuber dormancy : Short

Plant description : Saviola is a strong plant with purple flower.
Has good initial development. The plant
has good heat resistance tolerance

Disease resistance : Saviola is resistant to Virus Yⁿ, Virus Y^{ntn} and
/Tolerance Late blight.



SHANGI



Use : Chips
Table variety

Areas to be grown : ≥ 1500 m.a.s.l. is the best. It does well in areas such as Nyandarua, Kiambu, Nyeri, Laikipia, Meru, Nakuru, Bomet, Narok, Kwale, Nandi, Kisii, Kericho, Elgeyo Marakwet, Uasin Gishu, Trans-Nzoia, West Pokot, Taita-Taveta, and Cherangani hills.

Maturity : Early (≤ 3 Months)
Yield : Medium (30-40 tons/ha)
Tubers features : Oval shaped tubers
Smooth cream skin,
Medium to deep eyes
White flesh

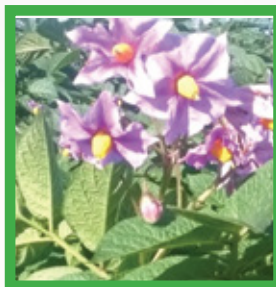
Tuber dormancy : Short (< 1 Month).

Plant description : Shanghi is a semi-erect medium tall variety (slightly below 1 metre in height) with moderately strong stems and light green broad leaves. It flowers profusely and the flowers are pink.

Disease resistance /Tolerance : Shanghi is moderately susceptible to Late blight



SHEREKEA



Use : Crisps
Chips
Table variety

Areas to be grown : High altitude of 1800-3000 m.a.s.l. is the best. It does well in areas such as Nyandarua, Kiambu, Nyeri, Laikipia, Meru, Nakuru, Bomet, Narok, Kwale, Nandi, Kisii, Kericho, Elgeyo Marakwet, Uasin Gishu, Trans-Nzoia, West Pokot, Taita-Taveta, and Cherangani hills.

Maturity : Medium (3-4 Months)

Yield : High (>40 tons /ha)

Tubers : Round tubers,
Smooth red skin
Deep eyes
Cream flesh

Tuber dormancy : Long (4-4.5 Months).

Plant description : Sherekea is a semi-erect tall variety (slightly below 1 meter in height) with strong stems and dark green, small to medium sized leaves. It flowers profusely and the flowers are light purple.

Disease resistance: Sherekea is resistant to Late blight, PVY and
/Tolerance PLRV



SIFRA



Use : Table variety (firm after cooking)

Areas to be grown : Timau, Tigoni, Molo, Narok, Bomet, Timboroa, and all regions suitable for potato production.

Maturity : Late (>4 Month)

Yield : High (>40 tons/ha)

Tuber features : Large, round to round oval tubers
Bright smooth light yellow skin
Shallow eyes
Cream flesh

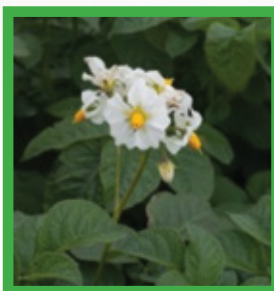
Tuber dormancy : Medium dormancy

Plant description : Sifra is a medium to tall variety with dense foliage. It flowers profusely and the flowers are white.

Disease resistance /Tolerance : Sifra has good resistance to Scab, medium resistance to Late blight and Early blight and resistant to wart disease and *Globodera rostochiensis*.



TAURUS



Use : Crisps

Areas to be grown : Suitable for all potato-growing areas

Maturity : Medium (3-4 Months)

Yield : Medium(30-40 tons/ha)

Tubers features : Round to round oval tubers
Yellow, smooth skin
Pale yellow flesh
Medium deep eyes

Tuber dormancy : Long

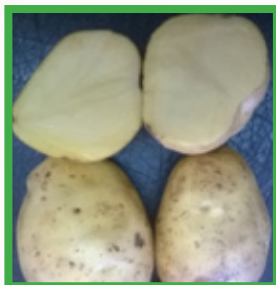
Dry matter content: 24%

Plant description : Taurus is a medium to tall plant. It has an upright to semi upright stem and with medium to high frequency of flowers

Disease resistance /Tolerance : Taurus has very good resistance against Virus Yⁿ, good resistance against Tuber blight, moderately resistant to Leaf blight, Common scab, and resistant to Potato Cyst Nematode Ro1



TIGONI



Use : Frozen Chips
Table variety

Areas to be grown : High altitude of >2300 m.a.s.l is the best. It does well in areas such as Nyandarua, Kiambu, Nyeri, Laikipia, Meru, Nakuru, Bomet, Narok, Kwale, Nandi, Kisii, Kericho, Elgeyo Marakwet, Uasin Gishu, Trans-Nzoia, West Pokot, Taita-Taveta, and Cherangani hills.

Maturity : Medium (3-4 Months)

Yield : Medium to high (35-45 tons/ha)

Tubers features : Long-oval
Smooth white skin
Pale yellow flesh
Shallow eyes

Tuber dormancy : Long (2.5-3 Months).

Plant description : Tigoni is an erect tall variety (about 1 metre in height) with strong stems and light green broad leaves. It flowers profusely and the flowers are white.

Disease resistance : Tigoni is moderately tolerant to Late blight
/Tolerance



TOLUCA



Use : Crisp
Chips
Table Variety
Excellent baking qualities

Areas to be grown : Suitable for all growing regions

Maturity : Late (>4 Months)

Yield : Medium (30 - 40 tons/ha)

Tubers features : Oval, medium tuber size
Yellow skin
Shallow eyes
Light yellow flesh

Tuber dormancy : Medium dormancy

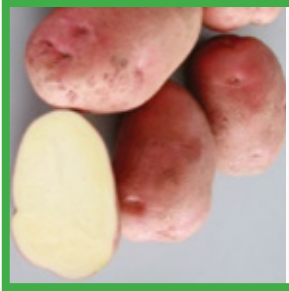
Dry matter : 20.7%

Plant description : Toluca is a Strong plant with good initial development. It has white flowers

Disease resistance /Tolerance : Toluca has very high resistance to Late blight and Virus Y^{ntn}.



UNICA



Use : Chips
Crisps
Table variety
Rich in vitamins C Iron and Zinc

Areas to be grown : Lowlands and highlands tropics 1400-3500
Masl

Maturity : Early (≤ 3 Months)

Yield : High (> 40 tons/ha)

Tuber features : Oblong tubers
Red Skin
Shallow eyes
Cream Flesh

Tuber dormancy : Long (2.5-3.5 months)

Plant description : Unica is a medium tall variety with strong semi- erect stems and dark green medium-sized leaves. It flowers profusely and the flowers are pink.

Disease resistance: Unica is moderately resistant to Late blight
/Tolerance (LB), highly resistant to Potato Virus X (PVX) and resistant to Potato Leaf Roll Virus (PLRV).



VOYAGER



Use : Chips
Table variety

Areas to be grown : Timau, Tigoni, Molo, Narok, Bomet, Timboroa and all regions suitable for potato production.

Maturity : Late (>4 Months)

Yield : High (>40 tons/ha)

Tuber features : Large long oval tubers
Bright, smooth yellow skin
Shallow eyes
Yellow flesh

Tuber dormancy : Long dormancy

Plant description : Voyager is a medium to tall plant .It flowers profusely and the flowers are white.

Disease resistance /Tolerance : Voyager has good resistance to Scab, medium resistance to Late blight and Early blight, resistant to Wart disease and *Globodera rostochiensis*.



WANJIKU



- Uses** : Chips
Crisps
- Areas to be grown** : Highland's tropics 1,500-3,500Masl It does well in areas such as Meru, Tigoni, Molo, Narok, Bomet, Nandi, Marakwet Timboroa and all regions suitable for potato production.
- Maturity** : Medium (3-4 Months)
- Yield** : High (>40 tons/ha)
- Tuber features** : Oblong shaped,
White cream skin colour
Shallow pinkish eyes
Cream flesh
- Tuber dormancy** : Long (2.5-3 Months)
- Plant description** : Wanjiku is a medium tall potato plant with strong semi erect stems and dark green medium size leaves with pinkish flowers.
- Disease Resistance /Tolerance** : Wanjiku is tolerant to Late blight, Potato Virus X & extremely tolerant to Potato Virus Y



ZAFIRA



Use : Table variety

Areas to be grown : Timau, Tigoni, Molo, Narok, Bomet, Timboroa and all regions suitable for potato production.

Maturity : Late (>4 Months)

Yield : High (>40 tons/ha) under intensive management

Tuber features : Big long oval in shape
Yellow skin
Very shallow eyes
Light yellow flesh

Tuber dormancy : Medium dormancy

Plant description : Zafira is a medium to tall variety and grows very fast. Leaves are medium to large and green in colour. It has high heat tolerance.

Disease resistance /Tolerance : Zafira is resistant to PCN- Ro 1, and 4 and Common scab, quite resistant to Virus Y^{ntn} and Virus Yⁿ, fairly susceptible to Late blight (foliage), susceptible to Late blight (tuber) and has Medium to high resistance to Potato Leaf Roll Virus



OTHER VARIETIES

No	Variety	Maintainer and Source	Maturity (Months)	Yield(Ton /ha)	Use/special attributes
1.	Roslin Eburu	KALRO -Tigoni	4 - 4.8	25-35	Very good storability
2.	Roslin Tana	KALRO -Tigoni	2 - 3	35-45	Good chipping quality
3.	Kenya Dhamana	KALRO -Tigoni	2 - 3	35-45	Good mashing quality
4.	Kenya Chaguo	KALRO -Tigoni	2 - 3	30-40	Good mashing quality



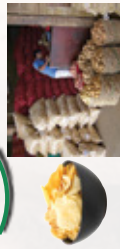
NPCK GOLD MEMBERS



SUERA FLOWERS LTD



NPCK VIAZI SOKO



Get seed Potato information and market your Potatoes through NPCK Viazisoko platform

ABOUT THE PLATFORM

It enables farmers to:

- Query and receive feedback on seed potato information
- Market potatoes

HOW TO REGISTER

1. Go to your mobile phone messaging service, type: **NPCK REGISTER # 'Your Name' # 'Your County'** and send to **22384**
EXAMPLE:
NPCK #REGISTER#ESTHER KAMAU #NAKURU

2. Alternatively use the following in place of 'register': **REG, JOIN, JIUNGE, ANDIKISHA, INGIA** or **SHIRIKI**.
EXAMPLE:
NPCK #ANDIKISHA# ESTHER KAMAU # NAKURU

3. You will receive a feedback confirming your registration 'Welcome to NPCK SMS services. Your Account has been created'

4. If registration was not successful you will receive an SMS with instructions on how to register.

(Note there is a space between NPCK and the first # . Use at least two of your names also note that there is a space between your first and second name.

HOW DO YOU QUERY FOR SEED POTATO INFORMATION?

1. Go to your mobile phone messaging service and type: **NPCK #Seed # 'Potato Variety'** and send to **22384**
EXAMPLE:
NPCK #SEED#SHANGI

1

2

3





HOW TO MARKET WARE POTATO?

1. To market through the platform a farmer must be in a group that has an MOU/AGREEMENT with NPCK. The group will have a farmer coordinator who will market on behalf of the members.

2. For more details on requirements and procedure contact NPCK marketing department through

Phone: 0799739578/ 0712338633

Email: npck@npck.org

HOW COORDINATORS WILL MARKET MEMBERS POTATOES

1. When a group member is about to harvest, the farmer coordinator will be responsible for uploading the required information as below;

NPCK #MARKET#**POTATO VARIETY**
#PRICE PER KG #AVAILABLE KG#**DAY**
#**MONTH** and send to **22384**
EXAMPLE:
NPCK #SHANGI#30#5000#15#5

2. You will receive a reply that your stock record has been created and will be valid for a period of two weeks

Note: (There is a space between NPCK and the first #, DAY means from 1st to 31st depending on the month. MONTH is 1-12)

1. When the coordinator collects potatoes for selling he updates the quantities and prices in the connected farmer software
2. The concerned members will receive an SMS with transaction details and thereafter Mpesa payment.



6

4

For further information, please contact the following

NPCK

Tel: 0799739578

Cell: 0712338633

Email: npck@npck.org

Website: www.npck.org

SMS-Service **22384**

Or

KEPHIS

Tel: 020 3597201/2/3

Cell: 0722516221

Email: kephisinfo@kephis.org

Website: www.kephis.org

SMS-Service: **5354**

Or

KALRO-Tigoni

Tel: 020 2076915

Cell: 0727031783

Email: kalro.tigoni@kalro.org

Website: www.kalro.org

The following are acknowledged for the images used in this catalogue:

Agricultural Development Center-Molo

Agrico East Africa

Anko Graffix

International Potato Center (CIP)

Danespo

Den-hartigh

Europlant Aardappel B.V.

HZPC (Hetteema- ZPC)

C. MeijerBV

Stet Holland B.V.

Kenya Agricultural and Livestock Research Organization-Tigoni

Kisima farm





Prepared by:-

Esther Kaguora (NPCK), Emily Oseno (Kenya -Netherlands Seed Potato development Project), Dr. Jane Mbugua and John Onditi (KALRO - Tigoni)

Others Contributors: Henry Chemjor (NPCK), Simon Komen (KEPHIS), Dr. Joseph Maina (MoALF) and Meshack Rono (GIZ)

Designed by:- Joseph Mureithi Wahome

**Coordinated by:-
Wachira Kaguongo (NPCK)**