

SEED &
VEGETATIVE



2016 NEW VARIETIES

Baill Seed®

**WE'RE
HERE WHEN
YOU NEED US**



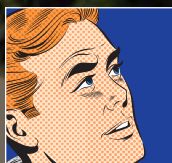
Your **Ball Seed** or **Ball ColorLink** rep is committed to helping you keep your business thriving.



Call **Customer Service** at **800 879-BALL** and connect with a friendly *live* voice.



Access variety and culture info on every variety in our catalogs 365/24/7 via the new **Gro Getter** app (more on this exciting intro on p 100).



Manage your business anytime, anywhere with **WebTrack**, just a click away at ballseed.com/webtrack.

**Your Ball Seed partners are
committed to always going the
extra mile to help you succeed.**

**Whatever you need, count on it!
We promise to be here for you.**

BallSeed®

Order at ballseed.com/webtrack.

Remember to use the handy plastic pocket in the front of your 2015 & 2016
Catalog to hold this New Varieties Supplement.

**Mark your calendars
for Ball Seed Field &
Landscape Days**

2015: Friday, July 31
2016: Friday, July 29



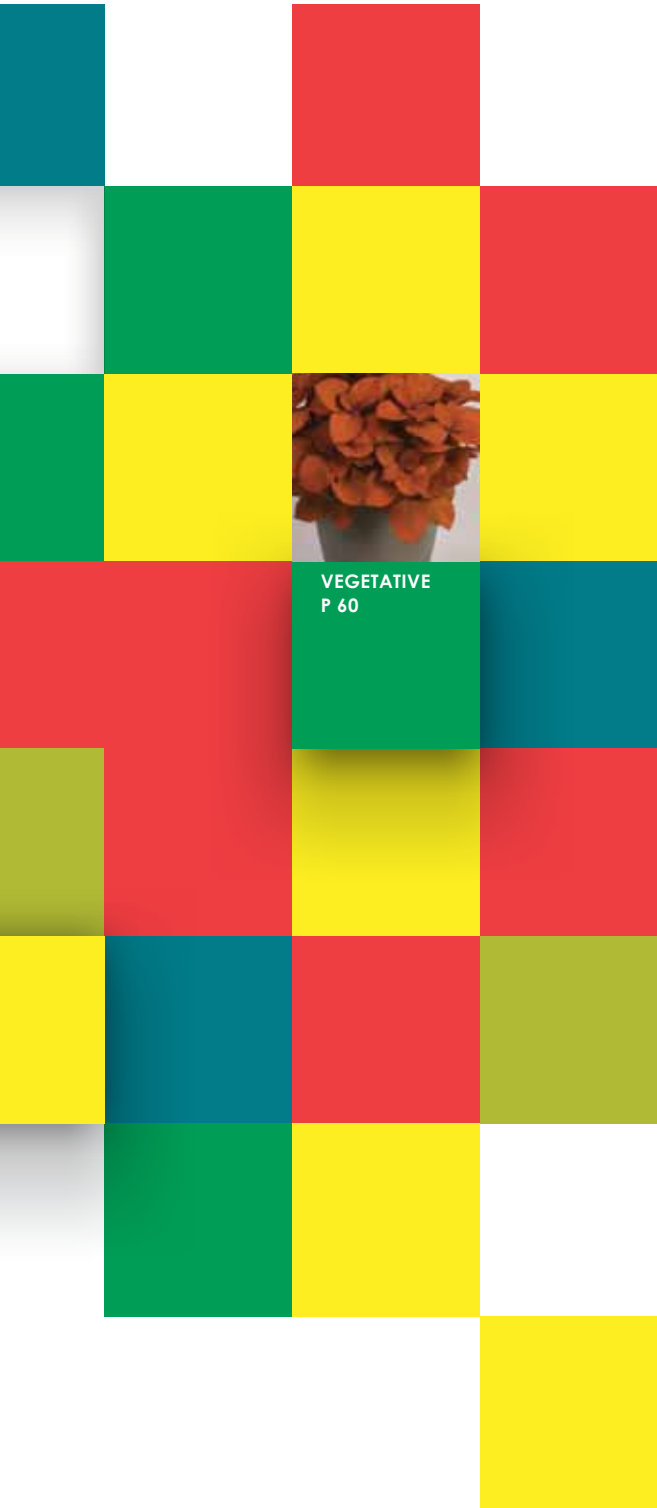
ballseed.com/webtrack



SEED
P 4

FIND IT FAST!

- Seed Varieties P 4
- Wave Program P 24, 26
- Burpee Program P 56
- Vegetative Varieties P 60
- Terms & Conditions P 98
- Discontinued Varieties P 99
- Gro Getter App P 100



VEGETATIVE
P 60



PERFORMANCE IN 2016

Every season gives us the opportunity to review and recharge our businesses, including our product assortment. This year's line-up of new varieties is highlighted in this Ball Seed Catalog supplement.

Bred for performance is a common trait of 2016's top introductions. The hybrid dianthus Jolt provides season-long color. Black & Bloom salvia is a strong addition to late spring schedules across every state and province. Breakthrough breeding in celosia has led to the introduction of Dragon's Breath, another example of the showy and durable products for 2016.

Perennials and vegetables are growth areas for many of you. Strengthened supply chain on perennials and an abundance of new vegetables provide depth, reliability and excitement.

We're here when you need us. Your Ball Seed rep is in your area and knows your market. WebTrack is always on, with up-to-date, accurate, live inventory. Ball ColorLink at 800 686-7380 and our Customer Service team at 800 879-BALL provide personal, on-the-phone responsiveness to your needs.

Give us a call or drop us a line. We want you to have your best season in '16.

Jim Kennedy,
Director of North American Sales
630 588-3464 jkennedy@ballhort.com

**AMAZING
NEW
DISCOVERIES!**

NEW Easy Wave® Yellow Petunia



**CRAVE SUNSET
CALIBRACHOA**

P 10



JOLT™ DIANTHUS

P 16



**HOT PAK™
HEAT-TOLERANT
MARIGOLD**

P 22



VALIANT™ VINCA

P 32



SEED

Exciting new growing and selling opportunities abound on every one of the next 50 pages, thanks to a game-changing lineup of seed introductions. What grabs YOU most may be the breathtaking color and super-strong performance of **Easy Wave® Yellow** (p 27). Perhaps it's the indestructible nature of all-new landscape series like Hot Pak™ marigold and Valiant™ vinca. Or it could be the easy-does-it attitude of Bandera Purple lavender and Crave Sunset calibrachoa. We invite you to turn the page now, begin your journey and see for yourself!



NEW Cloud Nine Blue Ageratum



NEW Cloud Nine White Ageratum



NEW Serenita Sky Blue Angelonia

F1 AGERATUM ☀️

A. houstonianum

New Cloud Nine Series

Fast to finish in packs and small pots.

Height: 4 to 5 in. (10 to 13 cm)

Spread: 10 to 12 in. (25 to 30 cm)

Available as Ball Premier Line® pelleted seed.

New series is uniform in the pack, with smaller leaves and up to 7 days earlier finish time than similar varieties. Works well in 4-in. (10-cm) pots, too.

- **Blue** Attractive darker buds for more appeal.
- **White**
- **Mix** Includes Blue, White and a pink not available separately.

F1 ANGELONIA ☀️

A. angustifolia

Serenita® Series

The same "Elegant and Tough" performance as Serena...in a more compact and manageable plant.

A PanAmerican Seed product.

- **New Sky Blue** Color holds up in high heat and light; lighter than Serena Blue and distinctive from Serenita Purple. Timing/height like Serenita Raspberry.
- **New Mix Improved** Adds NEW Sky Blue.



NEW Serenita Mix Improved Angelonia

See page 26 of the 2015 & 2016 Ball Seed Catalog for more information.



Pump up sales with all-new branded packaging, tags and POP for Serenita and Serena angelonias.



NEW BabyWing Bicolor



NEW BabyWing Mix



NEW BabyWing Red



NEW BIG Rose Green Leaf

F1 BEGONIA *B. x hybrida***BabyWing® Series****Best-in-class "bullet-proof" performer is reinvented with hot new colors!****A PanAmerican Seed product.**

- **New Bicolor** Shows a hint of "orange glow" on each flower along with the novel color pattern. Slightly smaller flowers than others in the series, but very floriferous for the same overall flower power.
- **New Red** Green leaves can show red picotee edge when young.
- **New Mix** Includes all colors.

See page 28 of the 2015 & 2016 Ball Seed Catalog for more information.

MORE "NEW FOR 2016" BEGONIAS!

See pages 28 to 30 of the 2015 & 2016 Ball Seed Catalog for more information.

BIG Rose Green Leaf**Nightlife Pink Improved**
Nightlife White Improved**Senator White Improved****SPEND LESS TIME BEHIND YOUR DESK...MORE IN THE GREENHOUSE.** Ball WebTrack® lets you work faster and easier...for free! Take the tour at ballseed.com/webtrack.

TUBEROUS-ROOTED BEGONIA

B. x tuberhybrida

New Nonstop JOY Yellow F1

Proven Nonstop quality...topped by huge, double, yellow flowers that pop at retail and in the garden.

Height: 9 in. (23 cm)

Spread: 14 to 16 in. (35 to 40 cm)

Available as Ball Premier Line® pelleted seed.

Better branching assures fuller baskets with easier sleeving and shipping. Great in landscapes and patio planters, too.

MORE "NEW FOR 2016"
TUBEROUS BEGONIAS!

See page 33 of the 2015 & 2016 Ball Seed Catalog for more information.

Illumination Lemon

Nonstop Mocca Bright Orange

BEGONIA BOLIVIENSIS

New San Francisco F1

Height: 12 in. (30 cm)

Spread: 18 to 20 in. (45 to 50 cm)

Available as Ball Premier Line® pelleted seed.

Easy to grow with great garden performance, San Francisco displays 2.5 to 3 in. (6 to 7 cm)-long flowers in a bright salmon color. Ideal for baskets, containers and mass plantings.

MORE "NEW FOR 2016" BEGONIA
BOLIVIENSIS VARIETIES!

See page 29 of the 2015 & 2016 Ball Seed Catalog for more information.

Bossa Nova Ivory

Bossa Nova Pink Glow

Bossa Nova Pure White

Bossa Nova Salmon Shades

BELLS OF IRELAND See Cut Flowers.



NEW Nonstop JOY Yellow



NEW San Francisco



NEW Cannova Lemon Canna

CANNA 🌞
C. x generalis

Cannova™ F1 Series

Strong yellow option joins the grower-friendly series to capture the landscape market.

A Ball Ingenuity product, available exclusively through Ball Seed.

- **New Lemon**

See page 35 of the 2015 & 2016 Ball Seed Catalog for more information.

CELOSIA 🌞 Also see Cut Flowers.
C. plumosa

New Dragon's Breath

Gorgeous Fall-flowering plumes of color.

Height: 24 in. (60 cm)

Spread: 16 in. (40 cm)

Great in heat and humidity, this newcomer shows off extra-large, bright red plumes. Well-suited to gallons for landscape and mixed container use. Minimal nitrogen needed during growing period, less fertilizer and irrigation needed for growers.

Ice Cream Series

A PanAmerican Seed product.

- **New Cherry Improved** Shorter than original Cherry to better match series uniformity.
- **New Mix Improved** Offers a well-matched mix of Light Yellow, Pink, Orange and NEW Cherry Improved.

Renamed for 2016 Ice Cream varieties:

- **Pink** (formerly Peach)
- **Light Yellow** (formerly Banana)
- **Yellow** (formerly Mango)

See page 37 of the 2015 & 2016 Ball Seed Catalog for more information.



NEW Ice Cream Cherry Improved Celosia



NEW Ice Cream Mix Improved Celosia



NEW Dragon's Breath Celosia

WEBTRACK®

ACCESS THE BIGGEST ONLINE PRODUCT LINEUP 24/7.

Live inventory from hundreds of seed and young plant suppliers at your fingertips...Ball WebTrack® is the only single-source site in the industry! Find it at ballseed.com/webtrack.

YOUR
POWERFUL
NEW
OPTION

EXCLUSIVE!

NEW Crave Sunset

The world's 1st calibrachoas from seed!

Crave Sunset and the **Kabloom™** series let you grow and sell outstanding calibrachoas *easily and efficiently*. Bring in easy-to-sow pelleted seed, have it on the shelf and you're ready to grow right on schedule. No waiting for shipments, no holding for weather, no juggling staff...this duo keeps YOU in control!



NEW Kabloom Deep Blue



NEW Kabloom Deep Pink



NEW Kabloom Yellow



NEW Kabloom White



NEW Crave Sunset



NEW Kabloom White

F1 CALIBRACHOA 🌞*C. x hybrida*

First-of-their-kind Crave Sunset and Kabloom produce bushy, trailing plants that show off the same amount of color as mid-vigor vegetative calibrachoa – side-by-side, you can't tell the difference. Ideal premium input for quarts, 4 to 6-in. (10 to 15-cm) pots, hanging baskets and mixed combos.

New Crave Sunset**Height:** 10 to 14 in. (25 to 35 cm)**Spread:** 12 to 16 in. (30 to 40 cm)

A Ball Ingenuity product, available exclusively through Ball Seed.

Available as Ball Premier Line® pelleted seed.

The first novelty seed calibrachoa, Crave Sunset grows more vigorously than the Kabloom colors. Great mixer with red or orange varieties for Fall sales.

New Kabloom™ Series**Height:** 8 to 12 in. (20 to 30 cm)**Spread:** 10 to 14 in. (25 to 35 cm)

A PanAmerican Seed product.

Available as Ball Premier Line® pelleted seed.

- **Deep Blue** The most vigorous with the greatest variation in vigor and habit. Low percentage of purple-blue flowers. PPAF, CA PBRAF
- **Deep Pink** Requires long days for flowering.
- **White** No "pinking"; most compact of the series. PPAF, CA PBRAF
- **Yellow** More upright plant structure. PPAF, CA PBRAF

F1 CYCLAMEN

C. persicum

Ball Seed and Morel partner to bring growers, retailers, landscapers and gardeners the cream of the crop in cyclamen. From combos and baskets for beautiful front yards, to appealing landscapes, to good-looking indoor plants that go with any décor...you'll find a wide range of exceptional choices!

STANDARD CYCLAMEN

Halios® Series

Florist-quality series delivers compact, continuous-flowering plants with large blooms on strong, solid stems.

A Ball Ingenuity product, available exclusively through Ball Seed.

Best for: 5.5 to 8.5-in. (14 to 21-cm) pots
• **New HD White** Well-suited to high-density (HD) production.

See page 44 of the 2015 & 2016 Ball Seed Catalog for more information.

Halios® Select Series

Eye-catching "fancy" varieties offer the same outstanding Halios performance.

A Ball Ingenuity product, available exclusively through Ball Seed.

Best for: 5.5 to 8.5-in. (14 to 21-cm) pots

- **New Intense Blush**
- **New Falbala Rose**
- **New Friola Light Purple** 10% of the plants show different flower shapes.
- **New Friola Magenta** 10% of the plants show different flower shapes.

See page 45 of the 2015 & 2016 Ball Seed Catalog for more information.



INTERMEDIATE CYCLAMEN

Premium Series

Well-suited to patios, this high-performance series is extremely floriferous on compact, vigorous and strong plants.

A Ball Ingenuity product, available exclusively through Ball Seed.

Best for: 4 to 6-in. (10 to 15-cm) pots
New Abanico varieties offer "fancy" flowers with slightly wavy petals and dense foliage:

- **New Abanico Light Purple**
- **New Abanico Magenta**
- **New Abanico Salmon**

See page 48 of the 2015 & 2016 Ball Seed Catalog for more information.



NEW Halios Select Intense Blush



NEW Halios Select Friola Magenta



NEW Halios Select Falbala Rose



NEW Halios Select Friola Light Purple



NEW Halios HD White



NEW Premium Abanico Light Purple



NEW Premium Abanico Magenta



NEW Premium Abanico Salmon



Tianis® Series

Uniform series and short production time make growing and selling easy.

A Ball Ingenuity product, available exclusively through Ball Seed.

Best for: 4 to 5-in. (10 to 13-cm) pots

- New Deep Magenta

See page 48 of the 2015 & 2016 Ball Seed Catalog for more information.



MINIATURE CYCLAMEN

Metis® Series

The richest mini F1 color assortment available.

A Ball Ingenuity product, available exclusively through Ball Seed.

Best for: 3.5 to 5-in. (9 to 13-cm) pots

- New Deep Magenta Silverleaf
- New Rose Aquarel

See page 49 of the 2015 & 2016 Ball Seed Catalog for more information.

Metis® Select Series

"Fancy" varieties offer the same outstanding Metis performance.

A Ball Ingenuity product, available exclusively through Ball Seed.

Best for: 3.5 to 5-in. (9 to 13-cm) pots

- New Origami Silverleaf Unique new petal shape evokes an origami fold; bicolor contrast of very intense purple and white.
- New Fantasia Winter Mix Very floriferous even in short days, with noticeable resistance to Botrytis. Includes 5 vibrant colors with white edges: Red, Deep Rose, Light Purple, Magenta and Purple.

See page 49 of the 2015 & 2016 Ball Seed Catalog for more information.



Smartiz® Series

Extra-compact plants are ideal for micro and mini programs.

A Ball Ingenuity product, available exclusively through Ball Seed.

Best for: 2.5 to 4-in. (6 to 10-cm) pots

- New Bright Red
- New Deep Magenta
- New Deep Rose
- New Light Purple
- New Purple
- New Rose

See page 50 of the 2015 & 2016 Ball Seed Catalog for more information.



HALIOS, METIS, SMARTIZ and TIANIS are registered trademarks of Morel Diffusion SAS.

INTERMEDIATE CYCLAMEN

New Perfetto Series

Height: 10 to 12 in. (25 to 30 cm)

Spread: 10 to 12 in. (25 to 30cm)

Compact, rounded plants with large flowers are best for high-density production. Short stems assure efficient shipping. Good complement to Laser, with similar crop time. Like Laser Synchro and Sierra Synchro, the Perfetto Synchro varieties meet the increased requirements for uniformity in habit, earliness and flower size.

- Deep Rose
- Rose Flame
- Salmon with Eye
- Synchro Salmon
- Synchro Scarlet
- Synchro Violet
- Synchro White
- Wine Flame
- Flame Mix
- Synchro Mix

MORE "NEW FOR 2016"
CYCLAMEN!

See pages 44 to 50 of the 2015 & 2016 Ball Seed Catalog for more information.

Fleur en Vogue Purple Improved
Fleur en Vogue White Improved

Laser Flame Mix

Winfall Snowridge Scarlet

New! These series are now available as Ball Premier Line® Genesis seed:

Laser Series

Laser Synchro Series

COSMOS

C. bipinnatus

New Casanova Mix

Height: 10 to 14 in. (25 to 35 cm)

Spread: 12 to 16 in. (30 to 40 cm)

Genetically compact, bushy plants show off colorful single blooms in red, white, pink and violet. Very uniform and perfect for high-density production.



NEW Perfetto Synchro Mix Cyclamen



NEW Perfetto Deep Rose Cyclamen



NEW Perfetto Synchro Salmon Cyclamen



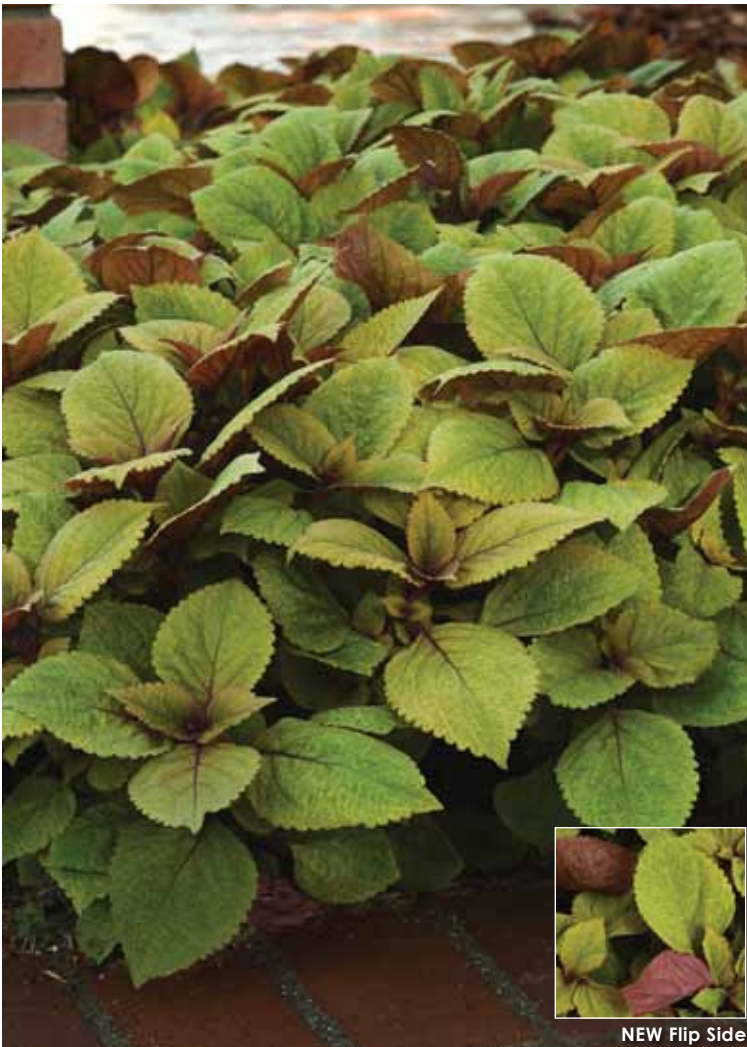
NEW Perfetto Flame Mix Cyclamen



NEW Casanova Mix Cosmos



NEW Kong Scarlet Improved



NEW Flip Side

COLEUS *C. x hybridus/Solenostemon scutellarioides***Kong® Series****A PanAmerican Seed product.**

- **New Scarlet Improved** Noticeable improvement for better, more consistent color with no rose center. Slightly shorter than original Scarlet, making it more controllable in the greenhouse, better for shipping and tidier in the landscape. Later to flower.

See page 40 of the 2015 & 2016 Ball Seed Catalog for more information.

PREMIUM SUN COLEUS *Solenostemon scutellarioides***New Flip Side****Height:** 14 to 18 in. (35 to 45 cm)**Spread:** 14 to 18 in. (35 to 45 cm)**A PanAmerican Seed product.****Available as Ball Premier Line® pelleted seed.**

Unique novelty variety is perfectly named: the top of each leaf is green and the underside is a rosy raspberry that shows as the wind flutters. Mid-size, late-flowering landscape variety is very sun-tolerant under high humidity, long lasting and versatile.

SHOCKING
SUMMER
COLOR!™



NEW Jolt Pink

Powerful surge of season-long displays and electrifying color!

First-of-its-kind **Jolt™** shows off two stunning colors, including 2015 *All-America Selections National Winner* Pink and beautiful Cherry. This highly durable duo offers the most heat-tolerant interspecific dianthus on the market – you can count on them to withstand hot Summer conditions with few disease issues and continue to flower without setting seed.



NEW Jolt Cherry Dianthus



NEW Dynasty Red Improved Dianthus



NEW Diana Lavendina Mix Dianthus



NEW Glamour Euphorbia

F1 INTERSPECIFIC SINGLE DIANTHUS 🌞*D. barbatus interspecific***New Jolt™ Series****Height:** 16 to 20 in. (40 to 50 cm)**Spread:** 12 to 14 in. (30 to 35 cm)**A PanAmerican Seed product.****Available as Ball Premier Line® pelleted seed.**

Grower-friendly, well-branched plants are easy to produce with less to no PGRs. Ideal for Summer premium quart and gallon containers to command a higher price point. Performs as a semi-hardy annual in Zone 7 and milder. Strong dark green foliage.

- **Cherry**
- **Pink** 2015 All-America Selections National Winner.

F1 DIANTHUS 🌞 Also see Cut Flowers.*D. chinensis***Diana Series**

- **New Lavendina Mix** Includes White, Blueberry and Lavender Picotee.

See page 53 of the 2015 & 2016 Ball Seed Catalog for more information.

F1 INTERSPECIFIC DOUBLE DIANTHUS 🌞*D. barbatus interspecific***Dynasty Series****A PanAmerican Seed product.**

- **New Red Improved** Tidier plant habit with better branching and more uniform flowering.

See page 52 of the 2015 & 2016 Ball Seed Catalog for more information.

F1 EUPHORBIA 🌞🌧️*E. graminea***New Glamour**

The first landscape euphorbia from seed is vigorous, resilient and durable from day one!

Height: 15 to 24 in. (38 to 60 cm)**Spread:** 15 to 20 in. (38 to 50 cm)**A PanAmerican Seed product.**

This newcomer gives pro landscapers a reliable and ready-to-go option – it holds well in the resale yard and at retail for less loss and less shrink. Glamour fills in fast to make a soft “hedge” in mass plantings, mixes well with other vigorous flowering annuals and shines in large cityscape containers. Low-maintenance plants take heat and drought, rebound fast from weather and need no deadheading. Well-suited to 1801 packs, 6-in. (15-cm) pots and gallons.

THEIR
GATEWAY TO
GARDENING



NEW Revolution Bicolor Yellow Orange

Give today's shoppers instant, no-fuss décor...and they'll be back for more!

Pretty pops of bright color. Simple touches to brighten their indoor and outdoor spaces. Little to no care needed. Add it all up and **Revolution™** promises to deliver the happiest of consumers. And when it comes to your end of things, choosing Revolution gives you *the most uniform gerbera you can grow*...and that will make you the happiest of growers!



NEW Mega Revolution
Salmon Rose with Light Eye



NEW Mega Revolution
Salmon Pink with Dark Eye



NEW Revolution Bright
Rose with Light Eye



NEW Revolution Red with Light Eye



NEW Revolution Bicolor Rose Shades



NEW Revolution Bicolor
Yellow Orange



NEW Revolution Harvest Brights



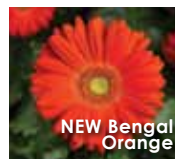
NEW Revolution
White with Light
Eye Improved



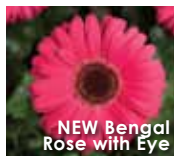
NEW Revolution Spring
Pastels Improved



NEW Bengal
Red with Eye



NEW Bengal
Orange



NEW Bengal
Rose with Eye



NEW Festival
Yellow With Eye

GERBERA

G. jamesonii (Transvaal Daisy)

Mega Revolution™ Series

A Kieft Seed product.

- **New Salmon Pink with Dark Eye** Large percentage of double-petaled blooms.
- **New Salmon Rose with Light Eye** Color is between Watermelon and new Salmon Pink With Dark Eye. High percentage of double-petaled blooms.

See page 68 of the 2015 & 2016 Ball Seed Catalog for more information.

Revolution™ Series

A Kieft Seed product.

- **New Bicolor Rose Shades** Similar colors as Midi Revolution Strawberry Shortcake.
- **New Bicolor Yellow Orange**
- **New Bright Rose with Light Eye**
- **New Harvest Brights** Segregating F1 hybrid is uniform across all tones. Great Fall mix.
- **New Red With Light Eye** Puts multiple blooms up at one time. Shortest growing window of any gerbera. Habit matches Scarlet Red with Dark Eye.
- **New Spring Pastels Improved** Richer salmon shades than original; contains a small percentage of lemon. Segregating F1 hybrid is uniform across all tones.
- **New White with Light Eye Improved** Improved bright white color.

See page 69 of the 2015 & 2016 Ball Seed Catalog for more information.

New Bengal Series

Height: 8 to 10 in. (20 to 25 cm)

Spread: 6 to 8 in. (15 to 20 cm)

Available as Ball Premier Line® coated seed.

Big brother to the Jaguar series is more vigorous with a bigger plant habit. Produces a continuous show of large flowers on short stems. Well-suited to 6-in. (15-cm) pots, gallons and larger.

- **Orange**
- **Orange With Eye**
- **Red With Eye**
- **Rose with Eye**
- **White**
- **Yellow with Eye**
- **Mix**

Festival Series

- **New Yellow With Eye** Single variety with dark eye.

See page 66 of the 2015 & 2016 Ball Seed Catalog for more information.

F1 GAZANIA

GAZANIA RIGENS

New Day Series

Delivers a more compact and bulkier plant with bigger flowers on shorter peduncles.

A PanAmerican Seed product.

- **New Red Stripe**
- **New Mix Improved** Now also includes NEW Red Stripe and Red Shades.
- **New Tiger Mix** Includes NEW Red Stripe and Rose Stripe.

See page 61 of the 2015 & 2016 Ball Seed Catalog for more information.



NEW New Day Tiger Mix Gazania



NEW New Day Red Stripe Gazania

GAZANIA SPLENDENS

Kiss Series

- **New Frosty Orange Flame**

See page 62 of the 2015 & 2016 Ball Seed Catalog for more information.



NEW Kiss Frosty Orange Flame Gazania

F1 GERANIUM

Pelargonium x hortorum

New Nano Series

Height: 8 to 10 in. (20 to 25 cm)

Spread: 8 to 10 in. (20 to 25 cm)

Available as Ball Premier Line® coated seed.

Naturally dwarf series does not need PGRs and will not stretch. Dark-leaved plants flower early, and stay compact with a profusion of extra-large flowers all season.

- **Appleblossom**
- **Deep Rose**
- **Pink**
- **Red**
- **Salmon**
- **Scarlet**
- **Scarlet Bicolor**
- **Violet**
- **White**



NEW New Day Mix Improved Gazania



NEW Nano Appleblossom Geranium

F1 NEW GUINEA IMPATIENS

I. hawkeri

Divine™ Series

A PanAmerican Seed product.

- **New Pink Improved** Better availability, slightly less vigor to better match the series, and larger flowers with more consistent, less shaded color.
- **New Violet Improved** Makes more compact, tidier plants with better flower/leaf form and darker flower color.

Renamed for 2016 Divine variety:

- **White Blush** (formerly White)



NEW Nano Red Geranium



NEW Nano Violet Geranium



NEW Divine Violet Improved New Guinea Impatiens



NEW Divine Pink Improved New Guinea Impatiens

See page 80 of the 2015 & 2016 Ball Seed Catalog for more information.

Make your Divine plants 100% retail ready.



FREE 11 x 7-in. (28 x 17-cm) Benchcard



FREE 19 x 38-in. (48 x 95-cm) Poster



Tags and Pack Handle from your preferred supplier.



4 to 6-in. (10 to 15-cm) Pot



NEW Taishan Mix Improved



NEW Proud Mari Mix

AFRICAN MARIGOLD 🌻*Tagetes erecta***New Proud Mari Mix****Height:** 10 to 12 in. (25 to 30 cm)**Spread:** 10 to 12 in. (25 to 30 cm)**Available as Ball Premier Line® coated seed.**

Dwarf, compact plants need little to no PGRs and deliver excellent landscape performance. Thick flower stems keep the bright and large, fully double flowers standing upright. Uniform bloom time and height across the gold, orange and yellow varieties.



NEW Taishan Orange Improved



NEW Taishan Yellow Improved

Taishan® Series

Stretches less, breaks less...and now delivers more uniform timing and habit across the series!

A Ball Ingenuity product, available exclusively through Ball Seed.

- **New Orange Improved** Makes a shorter plant with improved fully double flower form and darker orange color.
- **New Yellow Improved** Earlier with larger flowers.
- **New Mix Improved** Two improved colors join Gold for more uniform timing and habit across the series.

See page 86 of the 2015 & 2016 Ball Seed Catalog for more information.



NEW Alumia Mix



NEW Cresta Bee

FRENCH MARIGOLD 🌻*Tagetes patula***Alumia Series**

- **New Mix**

See page 87 of the 2015 & 2016 Ball Seed Catalog for more information.

Cresta Series

- **New Bee**
- **New Gold Improved** Improved flower quality to better match series.
- **New Mix**

See page 87 of the 2015 & 2016 Ball Seed Catalog for more information.



NEW Cresta Gold Improved



NEW Cresta Mix



**FIRE UP
MARIGOLD
SALES**

EXCLUSIVE!

NEW Hot Pak Mix

Keeps on blooming, even in the highest heat and humidity.

Extend your season into the hottest months – all-new **Hot Pak™** heat-tolerant marigolds were developed *IN the heat, FOR the heat*. Even when Mother Nature gets really tough, these perfectly matched plants stay compact and continue to flower without stretching or falling open all through the Summer.



HEAT-TOLERANT FRENCH MARIGOLD 🌻
Tagetes patula

New Hot Pak™ Series

Height: 6 to 7 in. (15 to 18 cm)

Spread: 6 to 8 in. (15 to 20 cm)

A Ball Ingenuity product, available exclusively through Ball Seed.

Available as Ball Premier Line® coated seed.

First-ever launch of a full French marigold series with all the key colors, perfectly genetically matched. Extra-dwarf crested series produces 1.75 to 2-in. (4.5 to 5-cm) blooms. Ideal for regional pack programs and landscapes.

- **Fire**
- **Flame** US PAF
- **Gold** US PAF
- **Harmony** US PAF
- **Orange** US PAF
- **Spry** US PAF
- **Yellow** US PAF
- **Mix**

COOL wave[®]

PANSIES



NEW Cool Wave Lemon Surprise & Blue Skies

STRONG MARKETING OPTIONS:



FREE season-specific POP makes Cool Wave pansies a sure seller!

Distinctive branded pots point shoppers in the right direction.



NEW Cool Wave Blue Skies Trailing Pansy



NEW Cool Wave Lemon Surprise Trailing Pansy



NEW Delta Premium Pure Yellow Improved Pansy



NEW Matrix Beaconsfield Pansy



NEW Matrix Solar Flare Pansy



NEW Spring Matrix Lavender Shades Pansy



NEW Spring Matrix Purple & White Pansy



NEW Spring Matrix Primrose Pansy



NEW Graffiti Red Velvet Pentas

F1 TRAILING PANSY 🌞*Viola x wittrockiana***Cool Wave® Series**

The Best Pansy Ever delivers easy spreading color for cool-season sales.

A PanAmerican Seed product.

- **New Blue Skies** Matches Golden Yellow for habit/vigor. Cool nights/low PGRs deliver the deepest color. High temperatures/PGR use show slightly lighter blue color and broader yellow eye. Small number of blooms show dark purple cap.
- **New Lemon Surprise** Lemon blooms have some genetic dark and light shading. The surprise: up to 3% of the blooms show a purple cap.

Recommended in Cool Wave branded packaging:

4 and 6-in. (10 and 15-cm) pots; also hanging baskets of your choice

See page 98 of the 2015 & 2016 Ball Seed Catalog for more information.

F1 PANSY 🌞*Viola x wittrockiana***Colossus Series**

- **New Yellow Improved** More uniform flowering, cleaner yellow color with less whiskers.

See page 101 of the 2015 & 2016 Ball Seed Catalog for more information.

Delta Series

- **New Premium Pure Yellow Improved** More uniform flowering.

See page 102 of the 2015 & 2016 Ball Seed Catalog for more information.

Matrix® Series**A PanAmerican Seed product.**

- **New Beaconsfield** Largest flowers of this type on the market.
- **New Solar Flare** Blooms show more red in low temperatures, more yellow in high.

See page 106 of the 2015 & 2016 Ball Seed Catalog for more information.

Spring Matrix™ Series**A PanAmerican Seed product.**

- **New Lavender Shades**
- **New Primrose**
- **New Purple & White**

See page 107 of the 2015 & 2016 Ball Seed Catalog for more information.

F1 PENTAS 🌞*P. lanceolata* (Star Cluster)**Graffiti Series**

- **New Red Velvet**

See page 114 of the 2015 & 2016 Ball Seed Catalog for more information.

wave
PETUNIAS



NEW Easy Wave Pink Passion

BIG BRAND SUPPORT:



FREE Wave POP makes it even easier to sell this popular branded petunia.

Branded pink packaging tells shoppers they've found Wave!



NEW Easy Wave Pink Passion



NEW Easy Wave Silver



NEW Shock Wave Yellow



NEW Easy Wave Yellow



NEW Tidal Wave Red Velour

SPREADING PETUNIA 🌞*P. x hybrida***Easy Wave® Series****Perfect for planters and gardens!****Available as Ball Premier Line® seed.****A PanAmerican Seed product.**

- **New Pink Passion** 8 to 10 days earlier than Easy Wave Pink in Spring natural daylength conditions. Habit is like Neon Rose.
- **New Silver** Color is similar to Tidal Wave Silver. Dense, holdable plants are great for landscapes.
- **New Yellow** Better branching with stronger rooting compared to vegetative yellow varieties. Flower size is similar to Easy Wave Red.

Recommended in Wave branded packaging:

6-in. (15-cm) pot, hanging basket, 306 premium pack with handle

Shock Wave® Series**The best for baskets!****Available as Ball Premier Line® seed.****A PanAmerican Seed product.**

- **New Yellow** Better branching with stronger rooting compared to vegetative yellow varieties.

Recommended in Wave branded packaging:

4-in. (10-cm) pot, hanging basket, 306 premium pack with handle

Tidal Wave® Series**Super-size color for big spaces!****Available as Ball Premier Line® seed.****A PanAmerican Seed product.**

- **New Red Velour** 2015 All-America Selections National Winner. Velvety Red Velour color is now available in a large-format plant. US 7,642.436

Recommended in Wave branded packaging:

8-in. (20-cm) pot

See pages 116 to 121 of the 2015 & 2016 Ball Seed Catalog for more information on the Wave Petunia Family – the most-asked-for plant brand ever.



CONTROLLED GROWTH PETUNIA ☀️
P. x hybrida

Pretty Flora™ Floribunda Series

A Ball Ingenuity product, available exclusively through Ball Seed.

Available as Ball Premier Line® seed.

- **New Pink Pearl** Holds its soft, shimmery color in high light/warm night conditions. Times like Red.
- **New Purple Improved** More vibrant color, slightly larger flowers, 4 days faster than original Purple.
- **New White Improved** Larger, clean, bright white flowers; more mounded/less upright ball shape; averages 2 days faster to flower.
- **New Mix Improved** Adds the 3 new colors and has a 7 to 9-day flowering window.

See page 115 of the 2015 & 2016 Ball Seed Catalog for more information.

Pretty Grand™ Grandiflora Series

A Ball Ingenuity product, available exclusively through Ball Seed.

Available as Ball Premier Line® seed.

- **New Violet** Stronger flower integrity and deep green foliage. Times like Midnight.

See page 115 of the 2015 & 2016 Ball Seed Catalog for more information.



NEW Pretty Flora Pink Pearl

FLORIBUNDA PETUNIA ☀️
P. x hybrida

Madness® Series

A Ball Ingenuity product, available exclusively through Ball Seed.

Available as Ball Premier Line® seed.

- **New Pink Chiffon** Holds color quality in high light/warm night locations. Times like Summer Madness. Tolerant of cold growing situations. Also added to Clear Madness Mix and Total Madness Mix.

See page 122 of the 2015 & 2016 Ball Seed Catalog for more information.



MANAGE YOUR BUSINESS ANYTIME, ANYWHERE. Sign up for Ball WebTrack® today for free at ballseed.com/webtrack.



NEW Pretty Flora White Improved



NEW Pretty Flora Mix Improved



NEW Pretty Flora Purple Improved



NEW Pretty Grand Violet



NEW Madness Pink Chiffon



NEW TriTunia Star Mix

PETUNIA 🌞*P. x hybrida***New TriTunia Series****Height:** 10 to 12 in. (25 to 30 cm)**Spread:** 12 to 14 in. (30 to 35 cm)**Flower size:** 3 in. (7 cm)**Available as Ball Premier Line® seed.**

All-new grandiflora series combines the best of *Ultra*, *Bravo* and *Storm* into one streamlined grouping for simplified ordering and production. Matched for uniformity in habit and flowering, with bright solid colors, crisp bicolors, and novelty veined and morn patterns.

- Blue
- Blue Star
- Blue Vein
- Burgundy
- Crimson Star
- Lavender
- Pink
- Pink Morn
- Pink Vein
- Plum
- Purple Star
- Red
- Red Star
- Rose
- Rose Star
- Salmon
- Salmon Vein
- Sky Blue
- Violet
- White
- Mix
- ProFormula Mix
- Star Mix
- Vein Mix

**MORE "NEW FOR 2016"
PETUNIAS!**

See pages 124 to 131 of the 2015 & 2016 Ball Seed Catalog for more information.

Daddy Red (formerly Daddy Strawberry)

Espresso Deep Rose
Espresso Red
Espresso Grande Red

Limbo GP Blue
Limbo GP Blue Veined
Limbo GP Sweet Pink
Limbo GP Violet
Limbo GP White

Mambo GP Blue
Mambo GP Burgundy
Mambo GP Pink Morn
Mambo GP Red
Mambo GP Red Veined
Mambo GP Sweet Pink
Mambo GP Violet

Picobella Cascade Sky Blue

**Trilogy Red 2015 All-America Selections
National Winner**

Trilogy Formula Mix
Trilogy Liberty Mix



NEW TriTunia Purple Star



NEW TriTunia Crimson Star



NEW TriTunia Blue Vein



NEW TriTunia Blue Star



NEW TriTunia Pink



NEW TriTunia Salmon

F1 PRIMULA ☀️

PRIMULA ACAULIS

Danessa Series

- **New White Improved** More uniform plant habit.

See page 136 of the 2015 & 2016 Ball Seed Catalog for more information.

New Pioneer PG Series

Height: 6 to 8 in. (15 to 20 cm)

Spread: 6 to 8 in. (15 to 20 cm)

Available as professional grade (PG) raw seed.

Early to mid-early series offers excellent uniformity within the color range. Compact, rounded plants have large flowers. Does not need low temperatures for flower initiation; will tolerate slightly warmer conditions and still produce good-quality plants. Suited to 3 to 4-in. (7 to 10-cm) pots and packs.

- Blue
- Burgundy Flame
- Carmine Flame
- Rose
- Scarlet
- Velvet Red
- White Eye
- Yellow
- Mix

New Sweet 16 Pink Shades

Height: 5 in. (13 cm)

Spread: 7 in. (18 cm)

A Ball Ingenuity product, available exclusively through Ball Seed.

One of a kind! Extremely large blooms have a “yesterday, today and tomorrow” flower show. Flowers 3 weeks earlier than Danova, with a slightly bigger plant.



NEW Sweet 16 Pink Shades Primula



NEW Stieletto Pink Primula



NEW Stieletto Purple Primula



NEW Stieletto Red Bicolor Primula



NEW Stieletto Mix Primula



NEW Magic Pink and Peach Ranunculus

PRIMULA POLYANTHA

New Stieletto Series

Height: 6 to 8 in. (15 to 20 cm)

Spread: 8 to 10 in. (20 to 25 cm)

Stieletto has very solid, long and strong stems, making it a noticeable standout from other Elatior types. Plants show 4 to 5 long-lasting blooms at one time. Works well in 4 to 5-in. (10 to 13-cm) pots, color bowls and decorator containers.

- Candy Bicolor
- Golden Orange
- Lemon
- Pink
- Purple
- Red
- Red Bicolor
- White
- Yellow
- Yellow Flame
- Mix



NEW Danessa White Improved Primula



NEW Pioneer PG Blue Primula



NEW Pioneer PG Mix Primula



NEW Pioneer PG Velvet Red Primula

F1 RANUNCULUS ☀️

R. asiaticus

Magic Series

- **New Pink and Peach** “Wow” color is now available individually.

See page 138 of the 2015 & 2016 Ball Seed Catalog for more information.



NEW Quartz XP Violet Eye Verbena

SALVIA 

SALVIA COCCINEA

Summer Jewel Series

- **New White** 2015 All-America Selections National Winner.
- **New Mix**

See page 140 of the 2015 & 2016 Ball Seed Catalog for more information.

SALVIA SPLENDENS

New Reddy Series

Height: 8 to 10 in. (20 to 25 cm)
Spread: 8 to 10 in. (20 to 25 cm)

The only naturally dwarf, non-stretching salvias on the market need no PGRs and are the perfect choice for plug and pack production. Early and uniform series produces a large number of dense, brightly colored flowers above dark green foliage. Daylength neutral.

- **Bright Red**
- **Lavender**
- **Pink**
- **Purple**
- **Salmon**
- **Scarlet Bicolor**
- **White**
- **White Surprise** Truly unique – rich red-orange blossoms pop out of white bracts.
- **Mix**



NEW Summer Jewel White Salvia



NEW Snapshot Burgundy White Snapdragon

F1 SNAPDRAGON  Also see Cut Flowers.
Antirrhinum majus

DWARF SNAPDRAGON

Snapshot™ Series

A Ball Ingenuity product, available exclusively from Ball Seed.

- **New Burgundy White**
- **New Orange Yellow**
- **New Peach Flame**
- **New Red Flame**
- **New Red Yellow**

See page 142 of the 2015 & 2016 Ball Seed Catalog for more information.

MEDIUM SNAPDRAGON

Speedy Sonnet Series

A Ball Ingenuity product, available exclusively through Ball Seed.

- **New White Improved** Cleaner white; matched to series for height uniformity.

See page 144 of the 2015 & 2016 Ball Seed Catalog for more information.



NEW Reddy Purple Salvia



NEW Reddy White Surprise Salvia



NEW Reddy Mix Salvia



NEW Speedy Sonnet Improved Snapdragon

VERBENA  Also see Perennials.
V. hybrida

Quartz XP Series

Quartz XP varieties have a tight, 7-day flowering window; early and significantly better branching; and reduced internode length.

A PanAmerican Seed product.

- **New Violet Eye**

See page 147 of the 2015 & 2016 Ball Seed Catalog for more information.

PLANTS
SURVIVE,
YOUR BUSINESS
THRIVES

NEW Valiant Apricot with
NEW Jolt Cherry Dianthus

Vigorous hybrid vinca survives in the landscape.

If aerial *Phytophthora* is a concern, you have a fresh alternative. The **Valiant™** series has intermediate resistance (IR) to aerial *Phytophthora* AND it's more vigorous than the competition under field conditions. It's even robust enough to establish well in Summer when it's cool and wet.



NEW Valiant Burgundy



NEW Valiant Mix



NEW Valiant Punch



NEW Valiant Lilac



NEW Valiant Orchid

VINCA *Catharanthus roseus*F1 AERIAL PHYTOPHTHORA-RESISTANT
UPRIGHT VINCA**New Valiant™ Series****Height:** 14 to 20 in. (35 to 50 cm)**Spread:** 10 to 12 in. (25 to 30 cm)**A PanAmerican Seed product.**

Valiant makes well-branched, vigorous, market-ready plants with large flowers that deliver big color impact at retail and in the landscape. Superior vigor allows Valiant landscapes to better survive environmental stresses such as sun, heat, drought, salt and cool/damp conditions. Low maintenance with good landscape longevity. Available in the key colors.

- **Apricot** US PAF
- **Burgundy** US PAF
- **Lilac** US PAF
- **Orchid** Slightly less vigorous than others in the series. US PAF
- **Punch** US PAF
- **Pure White** US PAF
- **Mix** Includes Apricot, Burgundy, Lilac, Punch and Pure White.



NEW Valiant Apricot



NEW Valiant Pure White



NEW Vitalia Cherry



NEW Vitalia Icy Pink

UPRIGHT VINCA

New Vitalia Series**Height:** 10 to 12 in. (25 to 30 cm)**Spread:** 6 to 8 in. (15 to 20 cm)

Open-pollinated series blooms early and uniformly across all colors, showing off bright, open-faced flowers.

- **Blush**
- **Burgundy**
- **Cherry**
- **Icy Pink**
- **Pink**
- **Polka Dot**
- **Red**
- **Scarlet**
- **White**



NEW Vitalia Scarlet



NEW Vitalia Burgundy



NEW Vitalia Pink



NEW Vitalia Polka Dot



NEW Vitalia Blush



NEW Vitalia White



NEW Sorbet XP
Purple Improved



NEW Sorbet XP
Orange Jump Up



NEW Sorbet XP
Lavender Pink



NEW Sorbet
XP YTT



NEW Sorbet XP Coconut Swirl

VIOLA  
Viola cornuta

Admire Series

- **New Blue**
- **New White**
- **New Yellow Improved** Better branching and more uniform plant habit.
- **New Yellow Purple Wing**

See page 154 of the 2015 & 2016 Ball Seed Catalog for more information.

Sorbet® XP F1 Series

Sorbet XP delivers the tightest bloom window and a uniform habit, so growers can send the best-looking violas to retail.

A PanAmerican Seed product.

- **New Coconut Swirl** Dark consistent picotee pattern.
- **New Lavender Pink**
- **New Orange Jump Up** Cap does not fade or disappear as Sorbet standard variety did.
- **New Purple Improved** Earlier timing, less stretch and darker purple color than original XP Purple.
- **New YTT** Opens white and changes to azure blue; nice color contrast.
- **New Jump Up Mix** Includes Denim Jump Up, Lemon Jump Up, Orange Jump Up, White Jump Up, Yellow Jump Up.

See page 157 of the 2015 & 2016 Ball Seed Catalog for more information.



NEW Sorbet XP Jump Up Mix



NEW Admire Yellow Purple Wing



NEW Admire Yellow Improved



NEW Double Zahara Yellow



NEW Double Zahara Cherry Improved



NEW Double Zahara Salmon Rose



NEW Pop Art White & Red



NEW Zahara Cherry Improved



NEW Zahara Red



NEW Zahara XL Fire



NEW Zahara XL Pink



NEW Zahara XL White



NEW Zahara XL Yellow

ZINNIA 

Z. HYBRIDA

Pop Art Series

- **New White & Red**

See page 161 of the 2015 & 2016 Ball Seed Catalog for more information.

Z. MARYLANDICA

Double Zahara® Series

The only true double disease-resistant series on the market.

- **New Cherry Improved** *All-America Selections National Winner* has bigger flowers, deeper color and more blooms per plant. Slightly less double than others in the series. US PVPAF
- **New Salmon Rose** US PVPAF
- **New Yellow** Same color as Zahara Yellow but appears more vibrant due to double shape and high petal count. US PVPAF

See page 163 of the 2015 & 2016 Ball Seed Catalog for more information.

New Zahara® XL Series

Height: 18 to 24 in. (45 to 60 cm)

Spread: 18 to 24 in. (45 to 60 cm)

A PanAmerican Seed product.

Available as Ball Premier Line® Ball Controlled Growth and coated seed.

The ideal choice for professional landscape programs: tremendous disease resistance for reliable, season-long performance... more vigor and larger blooms for quick fill... taller plants assure versatile uses and high visual appeal. Suitable for pot-tight production in 4-in. (10-cm) pots up to gallon containers.

- **Fire** US PVP 201200484
- **Pink** US PVP 201200482
- **White** US PVP 201200485
- **Yellow** US PVP 201200483

Zahara® Series

A PanAmerican Seed product.

- **New Cherry Improved** Larger flowers, more blooms per plant and tidier habit to match Fire. US PVPAF
- **New Red** One of the largest flower sizes in the series, in a more vibrant, saturated color than original Scarlet. Color varies by environment. US PVPAF

See page 162 of the 2015 & 2016 Ball Seed Catalog for more information.

UpTown Series

Exclusively Burpee!

- **New Frosted Strawberry** First double-flowered variety in the series has vigor to match the collection. Pictured on page 59.

See page 161 of the 2015 & 2016 Ball Seed Catalog for more information.



NEW Sylphid Lime Celosia

ANEMONE ☀️
A. coronaria

Mona Lisa® Series

A PanAmerican Seed product.

- New Wine White Bicolor

See page 167 of the 2015 & 2016 Ball Seed catalog for more information.



NEW Mona Lisa Wine White Bicolor Anemone

BELLS OF IRELAND ☀️☀️
Molucella laevis

Bells of Ireland

New! Now available as Ball Premier Line® coated seed.

CELOSIA ☀️
C. argentea plumosa (Feather Celosia)

New Sylphid Lime

Height: 28 in. (70 cm)
Spread: 12 in. (30 cm)

Masses of 6 to 12-in. (15 to 30-cm), lime green plumes on tall, straight stems make this an excellent bouquet filler and useful for all kinds of arrangements. Responds very well to light and temperature. In the greenhouse with lighting and heating, Winter production is possible.

DELPHINIUM ☀️
D. elatum

New Aurora F1 Series

Height: 35 to 47 in. (90 cm to 1.2 m)
Spread: 18 to 24 in. (45 to 60 cm)

Outstanding uniform flowering time is at least 1 month earlier than older O.P. varieties. The sturdy stems are covered with large, overlapping florets that completely cover the stem, over relatively small leaves. Also works well in bedding plant programs to sell green in packs or small pots, or as a garden perennial in 1 to 2-gallon containers.

- Blue
- Deep Purple
- Lavender
- Light Blue
- Light Purple
- White
- Mix



NEW Aurora Light Purple Delphinium



NEW Aurora Blue Delphinium



NEW Aurora White Delphinium



NEW Aurora Light Blue Delphinium



NEW Aurora Deep Purple Delphinium



NEW Sweet White Improved Dianthus



NEW Sweet Pink Magic Dianthus



NEW Sweet Magenta Bicolor Dianthus



NEW Sweet Pink Dianthus



NEW Sweet Mix Improved Dianthus

DIANTHUS ☀**Sweet F1 Series**

A PanAmerican Seed product.

- **New Magenta Bicolor**
- **New Pink**
- **New Pink Magic**
- **New White Improved** Pure, clean white flower color with no gray anthers.
- **New Mix Improved** Now also includes Black Cherry, Purple White Bicolor and NEW White Improved.

See page 172 of the 2015 & 2016 Ball Seed catalog for more information.



NEW Doublini Blue Lisianthus



NEW Doublini Rose Pink Lisianthus

F1 FLOWERING KALE (ORNAMENTAL KALE) ☀

Brassica oleracea

New Crane Feather Series

Height: 20 to 30 in. (50 to 75 cm)

Feather-leaf series adds texture and interest to floral arrangements.

- **King White**
- **Queen Red**

GOMPHRENA ☀

G. haageana

QIS Series

- **New Purple**

See page 174 of the 2015 & 2016 Ball Seed catalog for more information.

LIMONIUM ☀

L. sinuata (Sea Lavender, Statice)

QIS Series

- **New Purple**

See page 174 of the 2015 & 2016 Ball Seed catalog for more information.



NEW Doublini White Lisianthus



NEW QIS Purple Gomprena

LISIANTHUS, DOUBLE FLOWERED ☀

Eustoma grandiflorum (Texas Blue Bell)

New Doublini F1 Series

Height: 26 to 34 in. (65 to 85 cm)

Available as Ball Premier Line® pelleted seed.

Group 1 series features extra-small, 1.5 to 2-in. (4 to 5-cm) blooms shaped like roses. Producing numerous branches on each stem, these eye-catching, spray-type varieties are ideal for bouquets.

- **Blue**
- **Rose Pink**
- **White**



NEW Excalibur Green



NEW Excalibur Yellow

LISIANTHUS, DOUBLE FLOWERED continued

Advantage Series

- New Cherry Sorbet
- New Green
- New Pink
- New Purple

See page 175 of the 2015 & 2016 Ball Seed Catalog for more information.

New Excalibur F1 Series

Height: 30 to 36 in. (75 to 90 cm)
Available as Ball Premier Line® pelleted seed.

Group 2 standard double series is well-suited for growing in areas with higher temperatures. Offers strong stems, more usable flower buds, mid-size flowers and good vase life. Flowers slightly earlier than Flamenco or Mariachi, with less sensitivity to rosetting. Top flowering lowers the risk of *Botrytis* when sleeved.

- Blue Picotee
- Green
- Pure White
- Rose Pink
- Yellow

Flare F1 Series

A Ball Ingenuity product, available exclusively through Ball Seed.
New! Now available as Ball Premier Line® pelleted seed.

See page 176 of the 2015 & 2016 Ball Seed catalog for more information.



NEW Excalibur Blue Picotee



NEW Excalibur Pure White



NEW Excalibur Rose Pink



NEW Advantage Pink



NEW Advantage Purple



NEW Advantage Green



NEW Rosita 1 Blue Lisianthus



NEW Rosita 1 Green Lisianthus



NEW Rosita 2 Hot Lips Lisianthus



NEW Rosita 2 Jade Lisianthus



NEW Legend Pink Snapdragon



NEW Legend White Snapdragon



NEW Legend Yellow Snapdragon

New Rosita F1 Series

Height: 30 to 36 in. (75 to 90 cm)
Available as Ball Premier Line® pelleted seed.

Group 1-2 spray double series offers top flowering, strong stems and thick flower petals to assure easier transport without *Botrytis* issues. Mid-size, rose-shaped flowered have excellent vase life with high usable bud count.

- 1 Blue
- 1 Green
- 1 Pink Picotee
- 1 Rose Pink
- 1 White
- 2 Apricot
- 2 Blue
- 2 Blue Picotee
- 2 Green
- 2 Hot Lips
- 2 Jade
- 2 Pink
- 2 Misty Pink
- 2 Purple
- 2 Sapphire
- 2 White
- 2 Yellow
- 3 Pink
- 3 White
- 3 Yellow

SNAPDRAGON 🌻

Antirrhinum majus

New Legend F1 Series

Stem length: 36 to 52 in. (90 cm to 1.3 m)
 Extra-early Group 1 series is well-suited to Winter production. Uniform plants have strong stems, dense spikes and strong petals for good shippability and vase life.

- Pink
- White
- Yellow

STATICE 🌻

See Limonium, page 37.

SUNFLOWER 🌻

Helianthus annuus

Sunrich F1 Series

• **New Orange DMR** Offers added vigor and disease resistance to multiple strains of Downy Mildew compared to standard Sunrich Orange. Plant height, growing speed, flower shape and color are all similar to Orange.

See page 180 of the 2015 & 2016 Ball Seed catalog for more information.



GO GREEN...YOU CAN OPT OUT OF PAPER COPIES.

Use Ball WebTrack® to set up e-delivery of your paperwork and access copies online anytime. Organize your documents at ballseed.com/webtrack.



NEW Sunrich Orange DMR Sunflower

EASY
BREEZY...
FROM SEED!

NEW Bandera Purple

Enjoy hassle-free growing of a perennial favorite!

The first professional-quality *L. stoechas*, **Bandera Purple** gives you a seed-grown "no-pinch" option and lets you send lush, flower-filled plants to market with quality comparable to vegetative varieties. This versatile Spanish Lavender appeals to every niche: outdoor gardens, indoor pot plant, good nursery or grocery impulse item, nice gift plant.



NEW Rapido Blue Campanula



NEW Rapido White Campanula



NEW Starship Deep Rose Lobelia

Class/Variety	First Year Flower	USDA Hardiness Zones	Height	Spread	Bloom Time
F1 CAMPANULA (BELLFLOWER, CARPATHIAN HAREBELLS) <i>C. carpatica</i> 🌞🌙					
Pearl Series Available as Ball Premier Line® seed. Reintroduction. Compact, globe-shaped plants flower up to 3 weeks before other <i>C. carpatica</i> varieties. Also useful as an indoor lifestyle plant. • Deep Blue • White	✓	3-8	6-8 in. (15-20 cm)	12-18 in. (30-45 cm)	Summer
New Rapido Series A Kieft Seed product. Available as Ball Premier Line® seed. Earliest <i>C. carpatica</i> – up to 4 weeks earlier than other varieties. Delivers good young plant and finished plant vigor, while maintaining compact habit. Very short harvest window. Showy Spring perennial is ideal for high-volume bench run pot plant programs for 4-in. (10-cm) pots or gallons. Versatile – suited to patio planters and gardens, as well as indoor novelty pot plant. • Blue • White	✓	3-9	5-7 in. (13-18 cm)	5 to 8 in. (13 to 20 cm)	Spring to Summer
LAVANDULA (SPANISH LAVENDER) <i>L. stoechas</i> 🌞					
New Bandera Purple A Kieft Seed product. A true breeding breakthrough! Compact to mid-habit variety easily fills 4-in. (10-cm) pots to gallons, flowering heavily to almost cover the plants. Good branching and uniformity, with short harvest window. Holds its dense, mounded habit in the garden without falling open; long-flowering and self-cleaning with good secondary flush of flowers.	✓	7-10	7-9 in. (18-23 cm)	10-12 in. (25-30 cm)	Spring to mid-Summer
LOBELIA (CARDINAL FLOWER) <i>L. x speciosa</i> 🌞🌙					
Starship F1 Series A Kieft Seed product. Available as Ball Premier Line® seed. Unique Deep Rose joins this “tops for uniformity” series. 1 to 2 weeks earlier to flower/finish, Starship offers improved branching, low stretch, controlled habit and huge flower power. • New Deep Rose See page 213 of the 2015 & 2016 Ball Seed Catalog for more information.	✓	6-10	20-24 in. (50-60 cm)	6-8 in. (15-20 cm)	Summer to Fall



FIND...LEARN...BUY IN JUST A FEW CLICKS! Our new Catalog Search tool lets you search for varieties, access helpful info and use the “BUY NOW” button to add products to your shopping cart. All in seconds, all for free at ballseed.com/webtrack.



NEW Mini Gallery Mix Lupinus



NEW Mini Gallery Red Lupinus



NEW Mini Gallery Pink Bicolor Lupinus



NEW Mini Gallery White Lupinus



NEW Mini Gallery Yellow Lupinus



NEW Mini Gallery Blue Bicolor Lupinus

Class/Variety	First Year Flower	USDA Hardiness Zones	Height	Spread	Bloom Time
LUPINUS (LUPINE) <i>L. polyphyllus</i> 🌞					
Gallery Series New! Now available as Ball Premier Line® coated seed. • Blue • Pink • Red • White • Yellow • Mix					
<p>New Mini Gallery Series A Ball Ingenuity product, available exclusively through Ball Seed. Available as Ball Premier Line® seed. Beautiful new “no prune” series is more compact and floriferous than others, with a vibrant, season-long show of color!</p> <p>Each “mini” ball-shaped plant flowers early, producing 14 to 20 densely packed flower spikes with a long flowering period. Lower apical dominance assures that Mini Gallery remains shorter and more compact than others without any pruning. Versatile series offers extra selling opportunities as a low bedding plant, or for containers and window boxes.</p> <p>• Blue Bicolor • Pink Bicolor • Red • White • Yellow • Mix</p>	✓	6-10	16 in. (40 cm)	16 in. (40 cm)	Summer to Fall
MILMIUM (GOLDEN MILLET GRASS) <i>M. effusum aureum</i> 🌞					
<p>New Aureum Elegant, arching, bright golden yellow clumping grass is useful for landscaping and mixed containers. Shows best color in Spring and Fall.</p>		5-9	18-24 in. (45-60 cm)	18-24 in. (45-60 cm)	–
VERBENA <i>V. rigida</i> 🌞					
<p>New Santos Purple A Kieff Seed product. Available as Ball Premier Line® seed. First high-yield primed seed form of popular tender perennial has reliable availability, high germ and excellent plug yield.</p> <p>Compact, upright and well-branched plants are very heat and drought-tolerant, and exceptional in cool climates. Tough, long-lasting landscape perennial; also good in baskets/combo planters. High powdery mildew resistance.</p>	✓	7a-11	12 in. (30 cm)	Up to 48 in. (1.2 m)	Late Spring to Summer



NEW Aureum Milium



NEW Santos Purple Verbena



NEW Tuscan Sun



NEW Valley of the Kings



NEW Paris in Springtime

COMBOS FEATURING KIEFT SEED FIRST-YEAR-FLOWERING PERENNIALS

Set yourself apart in the mixed combo marketplace with proven, programmable premium combos. Each is globally tested in various climates to assure solid all-season performance with well-balanced growth, excellent fill, pleasing colors and appealing texture. NOTE: Individual varieties are sold separately. More combos and complete growing info at panamseed.com.

- **New Tuscan Sun** Starship Scarlet Lobelia, Mesa Bright Bicolor Gaillardia and Sirocco Anemanthele
- **New Valley of the Kings** NEW Starship Deep Rose Lobelia, Palace Purple Heuchera and Ellagance Purple Lavender
- **New Paris in Springtime** NEW Starship Deep Rose Lobelia and 'Cheyenne Spirit' Echinacea



Build your Summer sales with colorful, combo-specific planter tags, available from MasterTag.



NEW Avalanche Beet



NEW Hestia Brussels Sprouts



NEW Parisian Gherkin Cucumber



NEW Artwork Broccoli



NEW Lieutenant Broccoli



NEW Redhawk Cabbage

BEET Days

New Avalanche This 2015 All-America Selections National Winner is quick and easy to grow, and a real taste treat. The uniformly shaped roots are creamy white with no reddish tinge and offer a mild, very sweet flavor with no bitter, earthy aftertaste. Harvest at 2.75 to 3 in. (6.5 to 8 cm) and enjoy raw or cooked. 50

BROCCOLI Days Color

New Artwork F1 2015 All-America Selections National Winner is a unique stem broccoli that produces a tasty "bouquet" that can be eaten in its entirety – from the 6 to 8-in. (15 to 20-cm) stems to finely beaded heads. Gardeners simply pinch off the main head at just 0.75 to 1.5 in. (2 to 4 cm) and plants produce tender side shoots long into the season. Resists warm temperature bolting better than others on the market. 106 Dark green

New Lieutenant F1 Impressive performer in Summer heat when well-watered. Medium high domes are very smooth, with fine beads and smooth, mid-sized stems with minimal hollow stem. Upright plants have minimal side shoots. Very uniform maturity. 75-80 Dark green

BRUSSELS SPROUTS Days

New Hestia F1 2015 All-America Selections Regional Winner (Southeast, Mountain/Southwest) lets gardeners enjoy this popular vegetable fresh from their garden. Great flavor, high yield, nice upright habit and better cool tolerance than comparable varieties make Hestia a standout. Produces up to 100 bright green, 1-in. (2.5-cm) sprouts per plant. Tolerates warm conditions as well, offering the potential for a second season crop in many areas. 100

CABBAGE Days Weight Color

New Redhawk F1 Early-season red cabbage performs well in warm temperate regions. Good wrapper leaves protect the round, 5-in. (13-cm) heads. Versatile – enjoy raw, cooled or grilled. Resists Fusarium yellows. 70 2-4 lbs. (908-1816 g) Red

PICKLING CUCUMBER Length Days

New Parisian Gherkin 2015 All-America Selections Regional Winner (Northeast, Mountain/Southwest) makes crisp, sweet fruit that can be picked at midget or small pickle stage for pickling or enjoyed fresh. Semi-vining plants perform well in-ground or staked in containers. Resistant to CMV; tolerant of powdery mildew and scab. Monoecious. 2-4 in. (5-10 cm) 50



NEW Dolce Fresca Basil



NEW Peppermint Stick Celery



NEW Geisha Garlic Chives

ANNUAL HERBS

Height

All herbs are **Patio Produce** varieties – ideal for use in containers and small-space gardens.

New Basil Dolce Fresca A PanAmerican Seed product. 2015 All-America Selections National Winner gives gardeners traditional basil flavor, with more usable leaf yields. Mid-size plants have a unique, bushy habit with shorter internodes so plants stay controlled without getting tall and leggy. Great in-ground as well as in containers.

10-24 in.
(25-60 cm)

New Basil Lettuce-Leafed Very large, somewhat crinkled leaves are about 4.5 in. (12 cm) long and almost as wide. Distinctive flavor is similar but not as strong as sweet basil. Especially good in pasta dishes.

16-20 in.
(40-45 cm)

New Basil Persian Available as organic seed. 2015 All-America Selections Regional Winner (Heartland, Mountain/Southwest, West/Northwest) makes a large, vigorous plant with lots of tasty, large, silvery green leaves on sturdy, attractive purple stems. Late flowering.

10-24 in.
(25-60 cm)

New Celery Peppermint Stick Unique red celery is a beautiful addition to herb planters and mixed combos. Striped candy pink and green, 0.25-in. (0.6-cm) stalks shade to green leaves with intense full flavor, and are useful for fresh seasoning all year. Long harvest season; holds color when cooked. Slow to bolt.

10-24 in.
(25-60 cm)

PERENNIAL HERBS

USDA
Hardiness
Zones

Height

All herbs are **Patio Produce** varieties – ideal for use in containers and small-space gardens.

New Calamintha Marvelette Series Compact plants show off many large, striking flowers on upright spikes above the foliage all Summer. Sweet mint fragrance attracts butterflies and bees. Good in pots and as a garden edging. • Blue • White

To 8a

8 in.
(20 cm)

New Garlic Chives Geisha Available as organic seed. "Just right" garlic flavor and vigorous growth highlight this 2015 All-America Selections National Winner. Slightly wider, flatter and more refined leaves than others make Geisha useful as both an edible and an ornamental. Late flowering, with white blooms that attract butterflies.

4-10

10-24 in.
(25-60 cm)



NEW Lettuce-Leafed Basil



NEW Persian Basil



NEW Marvelette Blue Calamintha



NEW SimplySalad Kale Storm Mixture



NEW Scarletbor Kale



NEW Snowbor Kale



NEW Amanda Lettuce

KALE

Days

New Scarletbor

60-90

Gardeners enjoy the Number One Superfood fresh from their garden!

Vigorous variety produces red-purple foliage that deepens in color and becomes curlier in cooler weather. Slightly later than Redbor. Can be harvested at baby stage or left to mature. Highly attractive plant can be used as an ornamental, too.

New SimplySalad® Kale Storm Mixture See Lettuce & Salad Greens below.

New Snowbor F1

60

Very cold-hardy hybrid tastes even sweeter after a frost!

Vigorous plants produce blue-green leaves; cut outer leaves so that center can continue growing.

LETTUCE & SALAD GREENS

Days

Type

New Amanda F1

70

Looseleaf

Large, bolt-tolerant heads are bright green, curly and tender with delicious buttery taste. Can be grown in containers.

New Sandy

50

Oakleaf

2015 All-America Selections National Winner produces dark green, frilly leaves in loose heads with sweet, non-bitter flavor. Very compact and ornamental variety is ideal for patio planters. High-yielding, very slow to bolt even in heat and very resistant to powdery mildew, downy mildew and tip burn.

Baby:
30

New SimplySalad® Kale Storm Mixture

21-28

Assorted

A PanAmerican Seed product. Available as Ball Premier Line® seed.

The first all-kale SimplySalad is an attractive mix of textures and colors.

Won't bolt in containers; can also be planted in-ground for all-season harvest. Multi-pellets are efficient to sow in plugs or direct to final container. Since varieties can't separate in the seed hopper, a well-balanced mix is assured. Includes purple, green and blue varieties.

SimplySalad® Summer Picnic

Renamed for 2016 – formerly Endless Summer.



NEW Aphrodite Cantaloupe



NEW Red Baron Bunching Onion



NEW Sandy Lettuce

MELON

Type

Days

Weight

New Aphrodite F1 A smaller footprint than traditional cantaloupes makes Aphrodite good for small-space gardens. Sweet, aromatic melons have thick, smooth-textured orange flesh and slightly sutured exterior. Strong disease package including powdery mildew resistance.

Cantaloupe

72

6-7 lbs.
(2.8-
3.2 kg)

BUNCHING ONION

Days

New Red Baron Bunching Versatile, long-day variety holds its dark red outer skin color and purple ring color well. Harvest at 12 to 15 in. (30 to 38 cm) tall as a scallion, or later in Fall with a mid-size, mild-flowered bulb. Vigorous roots; long storage. Replaces Red Rum Bunching.

118

PAK CHOI

Days

New Bopak F1 Great for small space growing, this 2015 All-America Selections Regional Winner (Northeast, Great Lakes, Mountain/Southwest) makes a compact plant that matures up to 5 days before other varieties. Tender, dark green leaves and crisp, sweet white stalks are a tasty addition to Oriental recipes; leaves can also be enjoyed raw and hold their flavor even in warm weather. Harvest at baby size or grow to full 1.5 to 2-lb. (681 to 908-kg) heads. Bonus: it's an attractive "thriller" for patio planters!

45

PEA

Days

New Masterpiece F1 Exclusively Burpee! A triple-treat: parsley-like tendrils, peas and pods are all edible and delicious. Ideal for small-space gardens, planters, window boxes. Best trellised. Resists Fusarium and powdery mildew.

Foliage:
24
Pods: 60

NEW Bopak Pak Choi



NEW Masterpiece Pea



SEE WHERE YOUR ORDER IS...FAST! Track shipment of your seed and plants at Ball WebTrack®. Check it out at ballseed.com/webtrack.



NEW Hunter



NEW Wizard



NEW Bayonet



NEW Cherry Stuffer



NEW Good as Gold

PEPPER

*The first color listed is the stage when picking is most preferred. The second color indicates the mature stage, with more intense heat.

SWEET BELL PEPPER

	Days	Color*	Size (L x W)
New Bayonet F1 Continuous-fruiting variety produces high yields of jumbo, glossy and blocky peppers. Excellent plant vigor. Resists TSWV, TMV and multiple races of Xanthomonas.	70-80	Green/red	3.5 x 3.5 in. (8 x 8 cm)

New Hunter F1 A Ball Ingenuity product, available exclusively through Ball Seed. Compact, mid-size plant bears early, concentrated yields.	60-70	Green/red	4 x 4 in. (10 x 10 cm)
---	-------	-----------	------------------------

High-quality, extra-large, 4-lobed peppers have smooth and glossy exterior. Well-adapted for growing in the eastern United States. High resistance to Tobacco Etch Virus, Tobacco Mosaic Virus, Bacterial Spot 1-5, 7-9.

New Wizard F1 Available as Ball Premier Line® seed. Produces well throughout Spring and Summer. High yields of blocky, smooth and 3 to 4-lobed fruit. Resists Bacterial Leaf Spot 1-3, PVY0, TmPO.	72-74	Dark green/red	4.5 x 4 in. (11 x 10 cm)
---	-------	----------------	--------------------------

SWEET NON-BELL PEPPER

	Days	Color*	Size (L x W)
New Cherry Stuffer F1 Exclusively Burpee! Compact plants produce lots of "snackable, stuffable, grillable" peppers. Shape resembles popular Cherry Bomb, with less heat and more sweet. Good in small gardens, large containers. Resists TMV.	73	Green/red	2 in. (5 cm) diameter

New Good as Gold F1 Exclusively Burpee! Italian type is extremely tasty, savory and robust whether eaten fresh, grilled or sautéed; cooking enhances the flavor. Best in gardens and large containers. Resists TMV.	72	Green/orange	7 x 3 in. (18 x 8 cm)
--	----	--------------	-----------------------



NEW Sweet Savour



NEW Pretty N Sweet



NEW Sweet Sunset

SWEET NON-BELL PEPPER <i>continued</i>	Days	Color*	Size (L x W)
New Melrose Italian frying pepper produces very sweet, flavorful crimson red peppers early. Great fresh and grilled.	70	Green/ red	4 x 2 in. (10 x 5 cm)
New Pretty N Sweet F1 The name says it all for this 2015 <i>All-America Selections National Winner</i> – it's equal parts ornamental and edible! Compact, 18-in. (45-cm) plants bear lots of colorful, sweet and mild, 1-oz. (28-g) peppers. It's so prolific, gardeners can harvest weekly in peak season for fresh eating and cooking. Resists TMV.	60	Green/ tricolor	1-1.5 in. (2.5-4 cm) long
New Sweet Savour F1 Exclusively Burpee! Smaller plant is perfect for containers and small gardens, and is useful as both an edible and an ornamental. Beautiful and tasty tricolor fruit looks hot but eats sweet.	70- 75	Green/ tricolor	3 x 0.5 in. (7 x 1 cm)
New Sweet Sunset F1 2015 <i>All-America Selections Regional Winner (Southeast, Heartland, West/Northwest)</i> produces long and tapered sweet banana peppers perfect for frying, pickling and fresh eating. Resistant to Bacterial Spot 0-3, 7, 8.	85	Yellow/ red	8 x 1.5 in. (20 x 4 cm)
New Thunderbolt F1 Exclusively Burpee! Huge Marconi peppers have good flavor and texture, thick walls and satisfying crunch. High-yielding plants work in large containers, gardens. Resistant to TMV and TSWV.	65- 80	Green/ red	13 x 4 in. (33 x 10 cm)
New Tricked You F1 Meet the no-heat jalapeño! Great for blending with hot varieties to customize the heat level in hot sauces and salsas. Resistant to Bacterial Spot 0-3, 7, 8.	90	Green/ red	4.25 x 1.5 in. (10.5 x 4 cm)
New Tweety F1 Exclusively Burpee! Produces high yields of bright, tasty peppers good for stuffing and snacking. Great partner to Cherry Stuffer. Resists TMV.	70- 75	Yellow	2 in. (5 cm) diameter



NEW Tricked You



NEW Thunderbolt



NEW Tweety



NEW Emerald Fire



NEW Flaming Flare



NEW Hot Sunset



NEW Sweet Thing

BANANA PEPPER	Days	Color*	Size (L x W)
<p>New Hot Sunset F1 🔥 2015 All-America Selections Regional Winner (Southeast, Heartland, Great Lakes) is easy to grow and colorful. Thick-skinned, moderately hot banana peppers are easy to stuff and great for frying. Resists Bacterial Spot 0-3, 7, 8 and TSWV.</p>	85	Yellow/red	7 x 1.25 in. (18 x 3.5 cm)
FRESNO / JALAPEÑO PEPPER	Days	Color*	Size (L x W)
<p>New Emerald Fire F1 🔥🔥 2015 All-America Selections National Winner is a dream for grilling, roasting and salsa, with the mega-jalapeños giving more bang from every fruit. Excellent fruit quality with thick walls and very little cracking. Resists Bacterial Spot 0-3, 7, 8.</p>	90	Green/red	4 x 1.5 in. (10 x 4 cm)
<p>New Flaming Flare F1 🔥 2015 All-America Selections National Winner bears attractive, glossy red, triangular fruit that are perfect for chili sauces. Exceptional Fresno peppers are sweeter, larger and more prolific than similar types.</p>	76	Green/red	3.75 x 1.5 in. (9 x 4 cm)
ETHNIC HOT PEPPER	Days	Color*	Size (L x W)
<p>New Sweet Thing F1 🔥 Exclusively Burpee! Prolific plants bear plenty of slightly smoky and sweet, cayenne-shaped peppers for grilling or drying. Good for gardens, large planters.</p>	68	Green/orange, red, yellow	10-12 x 0.5 in. (25-30 x 1 cm)

HOW HOT IS HOT?

🔥🔥🔥🔥🔥 We rank the taste of our hot peppers from hottest (5 flames) to mildly hot (1 flame). See how these newcomers compare to our full lineup on page 252 of the 2015 & 2016 Ball Seed catalog.



NEW Green Beret Spinach



NEW Bossa Nova Zucchini



NEW Noche Zucchini

SPINACH

Days

New Avon F1 Fast-growing plants produce large, slightly crinkled and dark green leaves that are tender with superb flavor. Very bolt-tolerant. Resists powdery mildew races 1 and 2. Good replacement for Tye.

44
Baby:
20-25

New Green Beret F1 Dark green, semi-savoy variety can be grown as baby spinach or as large leaves. Strong, downy mildew-resistant plant.

30

SUMMER SQUASH

Days

Type

Size

New Bossa Nova F1 2015 All-America Selections National Winner bears slightly tapered, 8 to 10-oz. (227 to 284-g), dark and light green-mottled fruit with sweet, mild taste and smooth flesh. Compact bush-type plants bear early and continue up to 3 weeks longer than comparable types.

30-
45

Caserta
zucchini

3.5-6 in.
(8-15
cm)
long

New Goldprize F1 Gardeners enjoy abundant harvests of the very smooth and glossy, medium yellow fruit all season. Vigorous, semi-prostrate plants have reduced spines. Intermediate resistance to Watermelon Mosaic Virus, Zucchini Yellows Mosaic Virus.

42

Straightneck

6-7 in.
(15-18
cm)
long

New Noche F1 Named for its "dark as night" skin, a popular choice in western regions. Long, glossy fruit have superior shelf life. Open, spineless plants are easy to harvest. Resists Watermelon Mosaic Virus, Zucchini Yellows Mosaic Virus.

45

Zucchini

7-8 in.
(18-20
cm)
long

New Spineless Perfection F1 Spineless... perfected! Open, upright plants make it super easy to harvest the attractive, glossy zucchini without pain or fruit damage. Intermediate resistance to powdery mildew, Watermelon Mosaic Virus, Zucchini Yellows Mosaic Virus.

42

Zucchini

7-8 in.
(18-20
cm) long



NEW Spineless Perfection Zucchini



NEW Butterscotch Winter Squash

WINTER SQUASH

Days

Type

Size

New Butterscotch F1 2015 All-America Selections National Winner produces single-serving, 1.25-lb. (567-kg) butternut squash with a rich, very sweet and nutty flavor. The small, 1 to 2-lb. (454 to 908-g) fruits mature early with short, space-saving vines producing 3 to 4 per plant. Can be grown in a container. Resists powdery mildew.

85

Butternut

6 in.
(15 cm)
long x
3 in. (8
cm)
wide

STRAWBERRY

Days

Berri Basket F1 Series, Berries Galore F1 Series, Cupido F1, Berries Hill Gasana F1 & Berries Hill Toscana F1

New! Now available as Ball Premier Line® High Energy seed.

See page 261 of the 2015 & 2016 Catalog for more information.

New Berri Basket Ruby Ann F1 Available as Ball Premier Line® High Energy and pelleted seed. Sensational ruby red flowers are followed by sweet, mid-sized berries all Summer. Like its Berri Basket companions, the compact, cascading habit makes Ruby Ann perfect for hanging baskets.

75

New Berries Hill Montana F1 Available as Ball Premier Line® High Energy and pelleted seed. Extra large-flowered variety produces sweet berries all Summer from the many snow white blooms. Medium-compact. Combines with Gasana and Toscana to create the new Berries Hill Series.

80-85



NEW Berri Basket Ruby Ann Strawberry



NEW Berries Hill Montana Strawberry



NEW BushSteak



NEW Carolina Gold



NEW Chef's Choice Pink



NEW Porterhouse



NEW Steakhouse

TOMATO

All tomatoes are sold as defuzzed seed. Many tomatoes are also available as easy-to-sow Ball Premier Line® seed.

Growth:

I: Indeterminate (pole or stake type). Blossoms/fruit develop progressively, and the harvest lasts several months; best when staked.

D: Determinate (bush type). Blossoms/fruit develop on the vine at the same time. Short harvest time – 7 to 10 days. Self-topping plants seldom need staking; best caged.

Disease Tolerance:

V: Verticillium

N: Nematodes

T: Tobacco Mosaic Virus

F: Fusarium Wilt Race 1

F1&2: Fusarium Wilt Races 1 & 2

BEEFSTEAK TOMATO	Days	Size	Growth	Disease Tolerance
<p>New BushSteak F1 Exclusively Burpee! Finally...a beefsteak that can be grown in a container! Compact plant produces big, flavorful and meaty tomatoes that mature early. Works in small gardens, too.</p>	65	8-12 oz. (227-340 g)	D	–
<p>New Carolina Gold F1 Strong plants bear large to extra-large, smooth and flavorful, golden yellow fruit through the season. Crack-tolerant.</p>	75	7.5-10 oz. (213-284 g)	D	VF1&2
<p>New Chef's Choice Pink F1 ²⁰¹⁵ All-America Selections Regional Winner (Southeast, Great Lakes) offers the perfect acid-to-sugar balance, good for stewing and canning. Potato leaf plants produce high yields of crack-resistant, pink beefsteaks with flattened, deep globe shape. Good resistance to TMV, scab. Requires staking.</p>	110	12-14 oz. (340-397 g)	I	VF
<p>New Cherokee Carbon F1 A PanAmerican Seed product. See Heirloom Marriage™ Collection, page 55.</p>				
<p>New Porterhouse F1 Exclusively Burpee! Extra-large beefsteaks burst with old-fashioned flavor. Deep red all through, with meaty solids and succulent juice.</p>	80	2-4 lb. (0.9-1.8 kg)	I	–
<p>New Steakhouse F1 Exclusively Burpee! One of the world's largest beefsteaks bears high yields of broad-shouldered tomatoes loaded with true heirloom flavor and wonderful fragrance. NOTE: Support required.</p>	75-80	1.5-3 lbs. (0.7-1.4 kg)	I	VF



NEW Summer Girl



NEW Tomande



NEW Little Napoli

SLICER TOMATO

Days	Size	Growth	Disease Tolerance
------	------	--------	-------------------

New Jersey Boy F1 Exclusively Burpee!
See Heirloom Marriage™ Collection, page 55.

New Skyreacher F1 Strong branches bear small, round slicers with beautiful striped red-purple exterior. Grows blemish-free and split-resistant, performing well in a variety of conditions.

79	4-6 oz. (113-170 g)	I	-
----	------------------------	---	---

New Summer Girl F1 Exclusively Burpee! Matures 1 week or more before Early Girl, with fruit up to 1.5 oz. (42 g) larger and 20% higher yields. Resists TMV, TSWV.

49-52	5-6 oz. (142-170 g)	I	VF
-------	------------------------	---	----

New Tomande F1 Exclusively Burpee! Broad-shouldered tomatoes have flavor like heirloom Marmande but much higher yields. Fleshy, juicy fruit is good for salads and sandwiches.

72	6 oz. (172 g)	I	-
----	------------------	---	---



NEW Skyreacher

SALADETTE/SAUCE TOMATO

Days	Size	Growth	Disease Tolerance
------	------	--------	-------------------

New Little Napoli F1 A PanAmerican Seed product. One of the only patio romas, with disease resistance for better garden success. Small, 12 to 18 in. (30 to 45 cm)-tall plant is high-yielding – harvest enough at one time for a batch of salsa or sauce. Well-suited to patio planters.

60-65	2-2.5 oz. (55-70 g)	D	VF
-------	------------------------	---	----

New Marzineria F1 A PanAmerican Seed product.
See Heirloom Marriage™ Collection, page 55.

New Monticello F1 Roma variety produces high yields of large, firm and smooth fruit with superior eating quality and small blossom end scar. Adapted to all areas. Resists bacterial speck, grey leaf spot, TSWV.

73	4.5-5.5 oz. (126-155 g)	D	VF1&2N
----	----------------------------	---	--------

New Sweet Casady F1 Small, red-and-yellow-striped, elongated plum tomatoes are very sweet. Good for fresh eating, canning and making paste. Suited for gardens, large containers.

70	1.5 in. (3 cm)	D	-
----	-------------------	---	---



NEW Monticello



NEW Sweet Casady



NEW Chocolate Sprinkles



NEW Sugar Rush



NEW Tidy Treats



NEW Baby Boomer



NEW Purple Bumble Bee



NEW Pink Bumble Bee



NEW Sunrise Bumble Bee

SMALL-FRUITED TOMATO

	Days	Size	Growth	Disease Tolerance
<p>New Baby Boomer F1 <i>Exclusively Burpee!</i> Very prolific plants yield 300 or more 1-in. (2.5-cm) tomatoes right up until frost. Compact, whorled plants are perfect for patio planters; should be caged.</p>	50-55	1 oz. (28 g)	D	VF
<p>New Bumble Bee Collection F1 Available as organic seed. Three super-sweet, crack-resistant cherry varieties create a rainbow of color for fresh snacking. Plants produce all season, tolerating cool nights and hot days. • Pink Pink exterior is striped yellow and orange. • Purple Dusky purple with metallic green striping. • Sunrise Yellow with red stripes; pink interior marbling.</p>	70	0.75-1 oz. (21-28 g)	I	-
<p>New Chocolate Sprinkles F1 A PanAmerican Seed product. First in this type with a disease-resistance package. Unique striped color. Produces more fruit with better flavor than similar open-pollinated varieties.</p>	50-55	1 x 1.5 in. (2.5 x 4 cm)	I	FNT
<p>New Sugar Rush F1 A PanAmerican Seed product. Super-sweet, elongated fruit have one of the highest Brix ratings of this type. Fast-maturing and very productive all season, making long trusses of fruit with great crunch and texture.</p>	50-55	0.75-1.25 in. (2-3.25 cm)	I	FT
<p>New Tidy Treats F1 A PanAmerican Seed product. Very compact plant has a habit like a determinate, but produces like an indeterminate. Tidy Treats is good in small-space gardens and containers, but unlike other patio types, it continues to bear red cherry tomatoes all season.</p>	50-55	0.75-1 in. (2-2.5 cm)	I	VF

NEW Heirloom Marriage
Cherokee Carbon

NEW Heirloom Marriage Jersey Boy



NEW Heirloom Marriage Marzineria

INDIGO™ SMALL-FRUITED TOMATO
COLLECTION

Days	Size	Growth	Disease Tolerance
------	------	--------	-------------------

All are included in the Burpee program. See page 268 of the 2015 & 2016 Ball Seed catalog for details. Indigo varieties are exceptionally high in anthocyanins, noted by the indigo pigmentation on the tomatoes. INDIGO is a trademark of Oregon State University.

New Cherry Drops Produces purple and black cocktail cherry tomatoes with rosy undersides and deep red flesh. Under ideal growing conditions, there can be 500 to 1,000 fruit per plant!

65	1 in. (2.5 cm)	I	–
----	-------------------	---	---

HEIRLOOM MARRIAGE™ F1 TOMATO
COLLECTION

Days	Size	Growth	Disease Tolerance
------	------	--------	-------------------

A PanAmerican Seed product. Heirloom Marriage varieties cross two heirlooms to create a tomato that is much higher yielding and earlier maturing than their heirloom parents, with all of the great flavor and fewer blemishes. All are best-suited to in-ground growing.

New Cherokee Carbon F1 Robust purple beefsteak with rich flavor is a cross of Cherokee Purple and Carbon.

75-80	10-12 oz. (280-350 g)	I	–
-------	--------------------------	---	---

New Jersey Boy F1 Exclusively Burpee! This tasty, sandwich-ready slicer is a cross of Sudduth's Brandywine and Rutgers.

70	10-15 oz. (284-425 g)	I	–
----	--------------------------	---	---

New Marzineria F1 Red roma/paste tomato produces large yields of meaty fruit that are great for cooking. A cross of San Marzano and Cream Sausage.

70-75	2-3 oz. (55-85 g)	I	–
-------	----------------------	---	---



NEW Indigo Cherry Drops



ORDERING IS JUST A CLICK AWAY! Watch for the "BUY NOW" button in our Ball WebTrack® e-communications...then simply click and order! Save your time at ballseed.com/webtrack.



Burpee knows gardening

Exclusive fruits and vegetables that taste great and are good for you. Small-space growing solutions. Tried-and-true plant performance. Garden colors that won't quit. A known and trusted brand for over 125 years. Burpee's got it all.

Find everything you need to grow and sell in the Burpee 2016 Catalog.



WE KNOW HOW TO REACH CONSUMERS:



Burpee Garden Coach app at BurpeeCoach.com



24/7 access to growing tips, product info, podcasts and videos, recipes and more at BurpeeHomeGardens.com



Connecting to consumers in many ways: guest bloggers, garden photo sharing, "Burpee's Backyard" gardening community





NEW Masterpiece F1 Pea



NEW Sweet Thing Hot Pepper



NEW Peppermint Stick Celery



NEW Sunrise Bumble Bee F1 Tomato



NEW Purple Bumble Bee F1 Tomato



NEW Pink Bumble Bee F1 Tomato



NEW Indigo Cherry Drops Tomato

Burpee knows foodies

Consumers crave new experiences in food. Burpee provides unique, delicious vegetables that let foodies create sauces and salsas, stir-fries and grilled culinary delights with produce straight from their own gardens. We have lots of exciting new varieties to tempt taste buds.

MORE "NEW FOR 2016"
VEGETABLES & HERBS



NEW Tomande F1 Tomato



NEW Summer Girl F1 Tomato

- Basil Dolce Fresca
 - Cat Grass Tabby
 - Pepper Good as Gold F1*
 - Pepper Tweety F1*
 - SimplySalad® Kale Storm Mixture
 - Tomato Orange Zinger F1
 - Tomato Porterhouse F1*
 - Tomato SkyReacher F1
 - Tomato Sweet Casady F1
- *Exclusively Burpee!

Visit BurpeeHomeGardensBrand.com for the full Burpee variety listing.



NEW Little Napoli F1 Tomato



NEW Baby Boomer F1 Tomato



NEW BushSteak F1 Tomato



NEW Cherry Stuffer F1 Pepper



NEW Sweet Savour F1 Pepper

Burpee knows small spaces

Restrictions on space and time can keep modern gardeners from shopping for plants. To inspire a trip to the garden center, here's a selection of exciting new veggies just right for patio containers or kitchen gardens.

Burpee knows amazing

Bigger is better! These blue-ribbon worthy veggies grow to extraordinary sizes...but also offer great taste, crisp texture and eating versatility – a win-win situation all around!



NEW Thunderbolt F1 Pepper



NEW Steakhouse F1 Tomato



EXCLUSIVELY BURPEE!

NEW Marquee Special Effects Coleus



EXCLUSIVELY BURPEE!

NEW Uptown Frosted Strawberry Zinnia



EXCLUSIVELY BURPEE!

NEW Isabella's Red Splash Calibrachoa

Burpee knows color

All of our vivid new flower varieties are designed to grab consumer attention and fly off the retail bench.

MORE "NEW FOR 2016" FLOWERS

- Interspecific Dianthus Jolt™ Pink
- Interspecific Dianthus Jolt™ Cherry
- Burpee Combo Eye Caramba
- Burpee Combo Fantasyland

WE KNOW BRAND SUPPORT:

BurpeeHomeGardensBrand.com has our entire lineup with growing info, photos and instructional videos. Available anywhere, anytime!



List your business on the Retail Store locator



Download FREE customizable ads and POP



**FRESH,
INNOVATIVE
PROFIT
MAKERS!**

EXCLUSIVE!

NEW Campfire Coleus



**SUMMER ROMANCE™
DIPLADENIA**

P 70



4D™ OSTEOSPERMUM

P 82



**SOMBRERO®
ECHINACEA**

P 92



L.A. DREAMIN' HYDRANGEA

P 96



VEGETATIVE

The unexpected color of blazing new Campfire coleus (p 68) is causing jaws to drop in amazement. This stunner is the first of dozens of newcomers you'll meet in the pages to come – including several exciting “first ever” plus cool updates to popular classes. These dynamic, reliable solutions are brought to you by our Ball FloraPlant, Ball Ingenuity, Ball Ornamentals, Darwin Perennials and Selecta teams. While it's a wide and varied array, what they have in common: *every one is sure to satisfy your customers and maximize your profits.*



NEW Scopia Double Indigo Bacopa

ANGELONIA ☀️
A. angustifolia

Archangel™ Series

A Ball FloraPlant product, available exclusively through Ball Seed.

A "Real Series" – all colors in the series are perfectly timed together and uniform in habit.
A "Season Extender" – colorful, combo-friendly, heat-tolerant plants celebrate Summer.

- New Light Pink 'Balarclipi'
- New Orchid Pink 'Balarcorpin'



NEW Scopia Double Snowball Bacopa

ARGYRANTHEMUM ☀️
A. frutescens

Madeira™ Series

A Ball FloraPlant product, available exclusively through Ball Seed.

- New Crested Hot Pink 'Bonmad 11277' PPAF
- New Crested Violet Improved Improved habit to better match series, less fading. 'Bonmad 11276' PPAF

MADEIRA is a U.S. trademark of Bonza Botanicals, Pty., Ltd.



NEW Big Falls Pearl 16 Bacopa



NEW Big Falls Summer Blue Bacopa

BACOPA ☀️
Sutera grandiflora

Big Falls™ Series

A Selecta product.

- New Pearl 16 Bigger flower, better branching. 'KLESG15004'
- New Summer Blue Better Summer performance. 'KLESG14831'

New Scopia® Double Series

Height: 4 to 6 in. (10 to 15 cm)
Spread: 12 to 18 in. (30 to 45 cm)

A Ball FloraPlant product, available exclusively through Ball Seed.

Available as certified, disease-free cuttings through the Ball Certified Plants program.

Unique double flowers paired with upright habit make these ideal for both small and large pots. Adds depth and texture to early-season combo plantings in the landscape. A 2-for-1 series – pay for one unrooted cutting, get two to plant.

- New Double Indigo 'Dcopdbindg' PPAF
- New Double Snowball 'Dancop48'

SCOPIA is a U.S. registered trademark of Danziger "DAN" Flower Fam.



NEW Archangel Light Pink Angelonia



NEW Archangel Orchid Pink Angelonia



NEW Madeira Crested Hot Pink Argyranthemum



NEW Madeira Crested Violet Improved Argyranthemum



NEW Fiery Orange Begonia

BEGONIA 🌻*B. cultivars***New Fiery Orange****Height:** 6 to 8 in. (15 to 20 cm)**Spread:** 10 to 12 in. (25 to 30 cm)**A Selecta product.**

Available as unrooted cuttings exclusively through Ball Seed, and as rooted cuttings from selected Root & Sell locations.

Boliviensis cross produces bright, semi-double orange blooms that complement the compact, well-branched plant. Well-matched to new Marshmallow for habit. 'KLEBG15006'



NEW Marshmallow Begonia

New Marshmallow**Height:** 6 to 8 in. (15 to 20 cm)**Spread:** 10 to 12 in. (25 to 30 cm)**A Selecta product.**

Available as unrooted cuttings exclusively through Ball Seed, and as rooted cuttings from selected Root & Sell locations.

Compact *Boliviensis* cross produces lots of two-tone blooms on a strong and attractive, well-branched plant. Dependable performer in small pots. 'KLEBG15003'



NEW Namid Compact Yellow Bidens



NEW Namid Compact Double Yellow Bidens

BIDENS 🌻*B. ferulifolia***Namid™ Series****A Selecta product.**

- **New Compact Double Yellow**

'KLEBF14234'

- **New Compact Yellow** 'KLEBF14236'

- **New Special Yellow** Suited to quart production. 'KLEBF15323'

BRACTEANTHA 🌻*B. bracteata***Dreamtime® Series**

A Ball FloraPlant product, available exclusively through Ball Seed.

- **New Jumbo Rose** 'Bondre 1051' PPAF

DREAMTIME is a U.S. registered trademark of Bonza Botanicals, Pty., Ltd.



NEW Namid Special Yellow Bidens

CALCEOLARIA 🌻*C. hybrida***Calynopsis™ Series****A Selecta product.**

- **New Tiny Red** 'KLECH15023'



NEW Dreamtime Jumbo Rose Bracteantha



NEW Calynopsis Tiny Red Calceolaria



NEW Close Up

CALIBRACHOA 🌻
C. cultivars

New Close Up

Height: 6 to 10 in. (15 to 25 cm)
Spread: 10 to 12 in. (25 to 30 cm)

A Selecta product.

Available as unrooted cuttings exclusively through Ball Seed, and as rooted cuttings from selected Root & Sell locations.

This unique standalone star features semi-double, bright pink flowers with a white twist. A real stunner among calibrachoa for small pots. 'KLECA15332'



NEW MiniFamous Double Apricot

MiniFamous® Double Series

A Selecta product.

- **New Apricot** Striking red veins. 'KLECA14283'
- **New Blue 16** Earlier timing, darker and more intense color. 'KLECA15269'
- **New Lemon 16** Slightly more vigor. 'KLECA15290'



NEW MiniFamous Double Blue 16



NEW MiniFamous Double Lemon 16



NEW MiniFamous Double Compact Pink



NEW MiniFamous Neo Deep Yellow



NEW MiniFamous Compact Salmon Red+Eye



NEW MiniFamous Compact White 16

MiniFamous Double Compact Series

A Selecta product.

- **New Pink** 'KLECA14264'

MiniFamous Neo Series

A Selecta product.

- **New Deep Yellow** 'KLECA15327'

MiniFamous Compact Series

A Selecta product.

- **New Salmon Red+Eye** 'KLECA15294'
- **New White 16** Upgraded in flower time, habit and bloom size to create the "perfect white." 'KLECA06122' PP19,477



NEW Cabaret Light Pink Improved



NEW Can-Can Red Splash

CALIBRACHOA 🌻
C. hybrida

Cabaret® Series

A Ball FloraPlant product, available exclusively through Ball Seed.

A "Real Series" – all colors in the series are perfectly timed together and uniform in habit.

- **New Light Pink Improved** Better matches series with larger flowers in a more intense pink color, improved center branching and flower coverage. 'Balcablinkim'

Can-Can® Series

A Ball FloraPlant product, available exclusively through Ball Seed.

New Splash types offer an improvement over Terracotta for habit, number of flowers and bigger flower size.

- **New Neon Pink** 'Balcaneoni'
- **New Pink Splash** 'Balcanpilas'
- **New Red Splash** 'Balcanrelas'

Conga™ Series

A Ball FloraPlant product, available exclusively through Ball Seed.

A "Real Series" – all colors in the series are perfectly timed together and uniform in habit.

- **New Coral Kiss** 'Balcongriss'
- **New Pink Kiss** 'Balconginkiss'
- **New Rose Kiss** 'Balcongosiss'
- **New Sun Kiss** 'Balcongunitis'
- **New Yellow** 'Balconglow'



NEW Can-Can Neon Pink



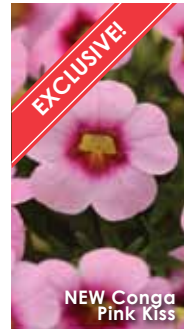
NEW Can-Can Pink Splash



NEW Conga Sun Kiss



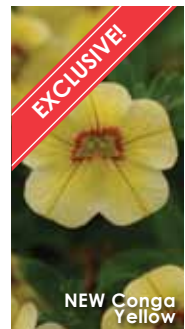
NEW Conga Coral Kiss



NEW Conga Pink Kiss



NEW Conga Rose Kiss



NEW Conga Yellow



NEW Pink Kisses



NEW Pink Kisses



NEW Oscar Purple Star



NEW Oscar Salmon



NEW Oscar Scarlet

POT CARNATION 🌞*Dianthus cultivars***New Pink Kisses™****Height:** 12 to 16 in. (30 to 40 cm)**Spread:** 10 to 14 in. (25 to 35 cm)**A Selecta product.****Available as unrooted cuttings exclusively through Ball Seed, and as rooted cuttings from selected Root & Sell locations.**

Early-season "grab 'n go" gift item gets the season off to a strong start. Shows off lots of long-lasting, two-tone flowers that don't need deadheading. 'KLEDG12163' PP24,707

POT CARNATION 🌞*Dianthus caryophyllus***Oscar® Series****A Selecta product.**

- **New Purple Star** 'KLEDP15180'
- **New Salmon** 'KLEDP15179'
- **New Scarlet** 'KLEDP11114'

SuperTrouper™ Series**A Selecta product.**

- **New Lavender+White** Adds the most sought-after color in pot carnations. 'KLEDP13122' PPAF

DIANTHUS

See page 71.



NEW SuperTrouper Lavender+White

COLEUS

Solenostemon scutellarioides

New Campfire

This coleus is on fire with blazing premium color!

Height: 14 to 36 in. (35 to 90 cm)

Spread: 24 to 36 in. (60 to 90 cm)

A Ball FloraPlant product, available exclusively through Ball Seed.

A "Season Extender" – colorful, combo-friendly, heat-tolerant plants celebrate Summer.

Available as certified, disease-free cuttings through the Ball Certified Plants program.

Campfire's head-turning foliage really lights up landscapes and patio planters. The perfect blend of high-appeal looks and low-maintenance performance, this stunner adds thrills to mixed combos and makes a bold statement in the landscape. Stays vibrant in sun and shade. Delivers proven performance in the landscape similar to Redhead and Wasabi. Late-flowering, with a habit like Henna. 'UF12823' PPAF

WEBTRACK®

TAKE THE GUESSWORK OUT OF YOUR SEED PURCHASING, RECEIVING & PLANNING.

Ball WebTrack® makes every step of Seed Order Management simple and smarter...for free. Make your life "sow easy" at ballseed.com/webtrack.





NEW FlameThrower Chili Pepper Coleus



NEW FlameThrower Chipotle Coleus



NEW FlameThrower Spiced Curry Coleus



NEW Early Blue Convolvulus



NEW Prime White Convolvulus



NEW Intenz Dark Purple Celosia



NEW Intenz Lipstick Celosia

New FlameThrower™ Series

Height: 18 to 24 in. (45 to 60 cm)
Spread: 16 to 18 in. (40 to 45 cm)

A Ball FloraPlant product, available exclusively through Ball Seed.

A "Season Extender" – colorful, combo-friendly, heat-tolerant plants celebrate Summer.

Available as certified, disease-free cuttings through the Ball Certified Plants program.

Bold, one-of-a-kind colors; uniquely shaped leaves and compact habit make these striking coleus ideal for small pots and mixed containers. Adds beautiful texture to gardens and planters, with great performance in both sun and shade.

- **Chili Pepper** 'UF12743' PPAF
- **Chipotle** 'UP12221' PPAF
- **Spiced Curry** 'UF12735' PPAF

CONVOLVULUS 🌻🌻

C. sabatius

New Early Blue 'KLECS04208'

New Prime White 'KLECS14837'

Height: 10 to 14 in. (25 to 35 cm)
Spread: 10 to 12 in. (25 to 30 cm)

A Selecta product.

Available as unrooted cuttings exclusively through Ball Seed, and as rooted cuttings from selected Root & Sell locations.

Drought and heat-tolerant plants feature attractive blooms and a mounded habit that's ideal for mixed combos.

CELOSIA 🌻

C. argentea

Intenz™ Series

Heat lovers bloom all Summer in planters and mixed containers.

A Ball Ingenuity product, available exclusively through Ball Seed.

Bred by FLORITEC.

- **New Dark Purple** Rich color does not fade.
- **New Lipstick** 'Intenz' PPAF



Add selling power to your Intenz plants with high-impact tags from The John Henry Company.



VIBRANT
VINING
TRIO

EXCLUSIVE!

NEW Summer Romance Vining Merlot

Lots more to love in this fresh, exciting collection!

Innovative and distinctive genetics set **Summer Romance™** apart at its debut last year. Now three exciting new vining dipladenias promise to elevate this beautiful collection even further beyond the “me too” varieties in this rapidly growing class. Best of all, these newcomers offer the same gardener-pleasing, Summer-long performance.



NEW Dalaya Red+White Dahlia



NEW Dalaya Pink+Yellow Eye Dahlia

DAHLIA ☀️
D. hybrida

Dalaya™ Series

A Selecta product.

- **New Pink+Yellow Eye** 'KLEDH14046'
- **New Red+White** 'KLEDH15076'
- **New Red+Yellow Eye** 'KLEDH14083'
- **New Yellow** 'KLEDH14045'

DAHLIA ☀️
D. pinnata

Dahlietta® Series

A Selecta product.

- **New Coby (Yellow & Orange)** 'Baldacob'

Delicious™ Series

A Selecta product.

- **New Deep Rose** 'Balderose'



NEW Dalaya Red+Yellow Eye Dahlia



NEW Dalaya Yellow Dahlia

DIANTHUS ☀️
D. interspecific

EverLast™ Series

A Selecta product.

- **New Raspberry Cream** Single flowers. 'KLEDG13158' PPAF
- **New Red+Pink** Semidouble flowers. 'KLEDG15176'
- **New White+Eye 16** Better vigor and overall plant strength. 'KLEDG14174' PPAF



NEW Delicious Deep Rose Dahlia



NEW Dahlietta Coby Dahlia

DIPLADENIA ☀️
Mandevilla x hybrida

Summer Romance™ Collection

A Ball Ingenuity product, available exclusively through Ball Seed.

Bred by Lannes and Mitchell Green.

- **New Vining Merlot**
- **New Vining Pink**
- **New Vining Red**



NEW EverLast Raspberry Cream Dianthus



NEW EverLast Red+Pink Dianthus



NEW EverLast White+Eye 16 Dianthus



NEW Summer Romance Vining Red Dipladenia



NEW Summer Romance Vining Pink Dipladenia



Summer Romance will shine in the store with eye-catching pot and basket tags, available from The John Henry Company.



NEW Loreen White Euphorbia



NEW Loreen Compact White Euphorbia

EUPHORBIA 
E. hypericifolia

New Loreen™ Series

Compact White

Height: 8 to 10 in. (20 to 25 cm)

Spread: 10 to 12 in. (25 to 30 cm)

White

Height: 10 to 12 in. (25 to 30 cm)

Spread: 12 to 14 in. (30 to 35 cm)

A Selecta product.

Available as unrooted cuttings exclusively through Ball Seed, and as rooted cuttings from selected Root & Sell locations.

Dense flowering and superior branching assure eye-catching retail displays and finished containers. Choose White for gallons and larger mixed containers, while Compact White works well in quarts.

- **Compact White** 'KLEEC14327'
- **White** 'KLEEC15272'

FUCHSIA 
F. cultivars

New Bellinto™ Series

Bellinto Compact

Height: 8 to 12 in. (20 to 30 cm)

Spread: 10 to 12 in. (25 to 30 cm)

Bellinto

Height: 14 to 16 in. (35 to 40 cm)

Spread: 12 to 14 in. (30 to 35 cm)

A Selecta product.

Available as unrooted cuttings exclusively through Ball Seed, and as rooted cuttings from selected Root & Sell locations.

Easy-to-grow, day-neutral series offers two options: Bellinto for larger pots and baskets and Bellinto Compact for quarts and small baskets.

- **Compact Red+Violet** 'KLEFU14838'
- **Compact Red+White** 'KLEFU14840'
- **Red+Blue** 'KLEFU14842'
- **Red+White** 'KLEFU14843'



NEW Bellinto Compact Red+Violet Fuchsia



NEW Bellinto Compact Red+White Fuchsia



NEW Bellinto Red+Blue Fuchsia



NEW Bellinto Red+White Fuchsia



NEW Presto Dark Red Improved Geranium



NEW Fantasia Scarlet Geranium



NEW Marino Blue 16 Heliotrope



NEW Marino White Heliotrope

ZONAL GERANIUM

Pelargonium x hortorum

Fantasia® Series

A Ball FloraPlant product, available exclusively through Ball Seed.

- **New Scarlet** 'Balfanscar'

Presto™ Series

Colossal new color crowns this compact performer.

A Ball FloraPlant product, available exclusively through Ball Seed.

A "Real Series" – all colors in the series are perfectly timed together and uniform in habit.

- **New Dark Red Improved** Darker red flowers and better branching. 'Tospresdared' PPAF

HELIOTROPE

Heliotropium arborescens

Marino™ Series

A Selecta product.

- **New Blue 16** Improved performance. 'KLEHA13711'
- **New White** 'KLEHA14006'



HIBISCUS 🌻
H. acetosella

New Little Zin

Extend your season with this heat-loving, long-lasting accent plant.

Height: 18 to 24 in. (45 to 60 cm)

Spread: 18 to 24 in. (45 to 60 cm)

A Ball FloraPlant product, available exclusively through Ball Seed.

A "Season Extender" – colorful, combo-friendly, heat-tolerant plants celebrate Summer.

Available as certified, disease-free cuttings through the Ball Certified Plants program.

Naturally compact, upright variety holds its shape at retail for longer sales window. Eye-catching burgundy color is perfect as a thriller in Summer mixed containers and in mass in-ground plantings. 'Little Zin' PPAF



GET AN ELECTRONIC FILE CABINET AT YOUR FINGERTIPS.

Ball WebTrack® helps keep all your documents in order and your business running like clockwork...for free. Organize your documents at ballseed.com/webtrack.



NEW Little Zin



NEW HibisQs Multi-Tropic Adonis Pink



NEW HibisQs Laluna



NEW HibisQs Multi-Tropic Orange

HIBISCUS

Hibiscus

New HibisQs® Series

Height: 36 to 48 in. (90 cm to 1.2 m)

Spread: 20 to 36 in. (50 to 90 cm)

A Ball Ingenuity product, available exclusively through Ball Seed.

Available as liners from Costa Farms.

The newest breeding in Tropical Hibiscus, HibisQs focuses on bold colors and flower longevity. Produces more buds and blooms per plant, and the blooms last two times as long as the competition. Holds up through the entire Summer and brightens any landscape. Best in partial sun in the Deep South.

- Adonis Pearl
- Adonis Pink
- Boreas White
- Laluna
- Multi-Tropic Orange
- Multi-Tropic Red
- Multi-Tropic Yellow

HibisQs is a U.S. registered trademark of Graff Development LLC.



NEW HibisQs Adonis Pearl



NEW HibisQs Multi-Tropic Yellow



NEW HibisQs Multi-Tropic Red



NEW HibisQs Boreas White



Big Bounce White

INTERSPECIFIC IMPATIENS 

I. hybrida

Shade garden confidence.

The reaction to Bounce and Big Bounce has been fantastic, particularly for their fast flowering, great branching and low maintenance. These exciting shade alternatives offer the habit and flower count of *I. walleriana*, downy mildew resistance and proven performance in full sun and heat.

Bounce™ Series

A Selecta product.

- **Cherry** 'Balboucher' PPAF
- **Lilac** 'Balboulac' PPAF
- **Pink Flame** All-America Selections National Winner. 'Balboufink' PPAF
- **Violet** 'Balbouvio' PPAF
- **White** 'Balbouite' PPAF

Big Bounce™ Series

A Selecta product.

- **Cherry** 'Balbigbery' PPAF
- **Lavender** 'Balbigaven' PPAF
- **Lilac** 'Balbigilac' PPAF
- **Red** 'Balbiged' PPAF
- **Violet** 'Balbigvio' PPAF
- **White** 'Balbigite' PPAF



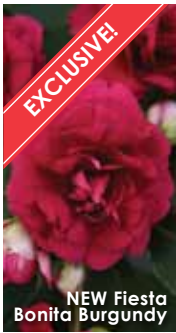
Bounce Pink Flame



Branded pot is available from your preferred pot supplier.



Order tags, pack handles and bench cards from The John Henry Company.



EXCLUSIVE!

NEW Fiesta Bonita Burgundy



EXCLUSIVE!

NEW Fiesta Bonita Cherry



EXCLUSIVE!

NEW Fiesta Bonita Salmon



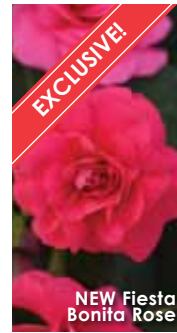
EXCLUSIVE!

NEW Fiesta Bonita Stardust Lavender



EXCLUSIVE!

NEW Fiesta Bonita Pink



EXCLUSIVE!

NEW Fiesta Bonita Rose



EXCLUSIVE!

NEW Fiesta Bonita White



NEW Fiesta Stardust Purple



NEW ColorPower Magenta Frost



NEW ColorPower Orchid Flame



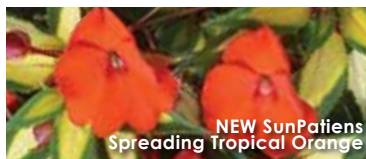
NEW SunPatiens Compact Coral Pink



NEW SunPatiens Compact Neon Pink



NEW SunPatiens Spreading Lavender



NEW SunPatiens Spreading Tropical Orange



NEW SunPatiens Spreading Clear Orange

DOUBLE IMPATIENS 
I. walleriana

New Fiesta Bonita™ Series

Height: 10 to 12 in. (25 to 30 cm)

Spread: 10 to 12 in. (25 to 30 cm)

A Ball FloraPlant product, available exclusively through Ball Seed.

A "Real Series" – all colors in the series are perfectly timed together and uniform in habit. Available as certified, disease-free cuttings through the Ball Certified Plants program.

All-new series replaces Fiesta Olé with bigger blooms, evenly matched habit and more flowers on top. Makes showy shade baskets with super-size double flowers. Extremely uniform with controlled habit for easy production.

- **Burgundy** 'Balboniburg'
- **Cherry** 'Balbonicher' PPAF
- **Pink** 'Balbonipink' PPAF
- **Rose** 'Balbonirose' PPAF
- **Salmon** 'Balbonisal' PPAF
- **Stardust Lavender** 'Balbonistar'
- **White** 'Balboniwite'

Fiesta™ Series

A Ball FloraPlant product, available exclusively through Ball Seed.

- **New Stardust Purple** Unique striped stardust pattern. 'Ballfiestarp'

NEW GUINEA IMPATIENS 
I. hawkeri

ColorPower™ Series

A Selecta product.

- **New Magenta Frost** 'KLENI12130'
- **New Orchid Flame** 'KLENI13134'

IMPATIENS 
I. x hybrida

SunPatiens® Spreading Series

Produced by Ball FloraPlant.

- **New Spreading Clear Orange**
- **New Spreading Lavender**
- **New Spreading Tropical Orange**

SunPatiens Compact Series

Produced by Ball FloraPlant.

- **New Compact Coral Pink**
- **New Compact Neon Pink**

SUNPATIENS are bred by Sakata. SUNPATIENS is a registered trademark of Sakata Seed Corporation.





**SMALL
YET
MIGHTY**

EXCLUSIVE!

NEW SolarPower Black

Dramatic color in a space-saving habit.

Meet the best-matched Ipomoea series on the market and the most efficient in production. New **SolarPower™** makes tidy plants that let you ship and sell more plants per rack. And sell, you will... this combo-friendly, heat-loving trio is the perfect choice to keep cash registers ringing well into the Summer!



NEW SolarPower Black Ipomoea with Archangel Dark Rose Angelonia, Little Lucky Hot Pink Lantana and Goldilocks Lysimachia



NEW SolarPower Lime Ipomoea

IPOMOEA ☀️
I. batatas

New SolarPower™ Series

Height: 10 to 12 in. (25 to 30 cm)
Spread: 24 to 36 in. (60 to 90 cm)

A Ball FloraPlant product, available exclusively through Ball Seed.

Available as certified, disease-free cuttings through the Ball Certified Plants program.

Densely branched plants hold their shape and color in the landscape and in mixed combos all Summer long. Well-branched with medium vigor, SolarPower works well with companion plants. Best for gallons, 10 to 12-in. (25 to 30-cm) baskets and mixed containers.

- **Black** 'Balsolabblack' PPAF
- **Lime** 'Balsolalime' PPAF
- **Red** 'Balsolared' PPAF

LOBELIA ☀️
L. hybrida

Early Springs™ Series

A Ball FloraPlant product, available exclusively through Ball Seed.

Formerly Hot Springs™ series.

- **Dark Blue** 'KLELE12472' PP25,289
- **Lavender Pink** 'KLELE12474'
- **Magenta** 'Balspringma'
- **Sky Blue** 'KLELE12471' PP24,311
- **White** 'KLELE12473' PP25,182

LOBELIA ☀️
L. cultivars

Magadi™ Compact Series

A Selecta product.

- **New Compact Dark Blue** 'KLELE13407'
- **New Compact Lavender 16** True lavender blooms and tighter, upright habit; most compact variety in the series. 'KLELE15004'

Magadi™ Series

A Selecta product.

- **New Indigo Blue** Replaces Ocean Blue with more intense true blue color and better heat tolerance. 'KLELE13589'

MEDINILLA
See page 84.



NEW SolarPower Red Ipomoea



Early Springs Lavender Pink & White Lobelia



NEW Magadi Compact Lavender 16 Lobelia



NEW Magadi Compact Dark Blue Lobelia



NEW Magadi Indigo Blue Lobelia



NEW Pop Culture



NEW Eye Caramba

MIXMASTERS MULTILINERS

13 colorful new combos that rock!

A Ball FloraPlant product, available exclusively through Ball Seed.

MixMasters multiliners provide thoroughly tested "recipes" that are perfectly balanced. Greater genetic diversity contributes to more innovative mixes.

- **New Berry Basket** Petunia Sun Spun Burgundy, Verbena Aztec Burgundy Wink and Calibrachoa Cabaret White.
- **New Circus Parade** Bidens Sunbeam, Lobelia Waterfall Blue and Verbena Aztec Red Velvet.
- **New Color Theory** Petunia Sun Spun Blue, Verbena Aztec Dark Red and Calibrachoa Can-Can Apricot.
- **New Comic Relief** Petunia Sun Spun Yellow, Lobelia Early Springs Lavender Pink and Verbena Aztec Violet.
- **New Do You Lilac It?** Petunia Sun Spun Silver, Lobelia Early Springs Lavender Pink and Verbena Aztec Blue Velvet.
- **New Eye Caramba** Petunia Flash Mob Bluerific, Verbena Aztec Violet Wink and Calibrachoa Cabaret White.
- **New Fantasyland** Petunia Flash Mob Magentacular, Calibrachoa Cabaret Deep Yellow and Verbena Aztec Blue Velvet.
- **New Flower Child** Petunia Sun Spun Burgundy, Verbena Aztec White and Lobelia Early Springs Sky Blue.
- **New Heartland** Petunia Sun Spun White, Verbena Aztec Dark Red and Lobelia Early Springs Sky Blue.
- **New Panorama** Calibrachoa Cabaret White, Rose and Purple.
- **New Playdate** Calibrachoa Cabaret Deep Yellow, Rose and Purple.
- **New Pop Culture** Petunia Sun Spun Yellow, Verbena Aztec Dark Red and Lobelia Early Springs Sky Blue.
- **New Sweet Escape** Petunia Sun Spun Yellow, Verbena Aztec Burgundy Wink and Calibrachoa Cabaret Light Pink Improved.



NEW Comic Relief



NEW Fantasyland



NEW Berry Basket



NEW Do You Lilac It?



NEW Sweet Escape



NEW Flower Child



NEW Color Theory



NEW Heartland



NEW Playdate



NEW Panorama



NEW Circus Parade



**RACK UP
MORE SALES**

NEW 4D Dark Violet+White

This new spin on osteos lets you pack more on a rack!

The double-flowered **4D™** series replaces 3D with a less vigorous habit and shorter stems so you can ship more plants on every rack. In the store and in the landscape, the double blooms – including a Yellow that screams Spring – stay open 24/7, driving early-season sales and creating maximum at-home impact.



NEW 4D Purple



NEW 4D Pink



NEW 4D
Violet Ice



NEW 4D
Berry White



NEW 4D
Lemon Ice



NEW 4D Silver



NEW 4D Yellow



NEW FlowerPower Compact Yellow



NEW
FlowerPower
Dark Purple



NEW
FlowerPower
Lavender Pink



NEW
FlowerPower
Pink



NEW
FlowerPower
Violet



NEW Serenity Lavender
Frost Improved



NEW Serenity Spring Day



NEW Zion Lavender+Purple Eye



NEW Zion
Magic Orange



NEW Zion
Pure Yellow

OSTEOSPERMUM ☀️
O. hybrid

New 4D™ Series

Height: 8 to 12 in. (20 to 30 cm)
Spread: 12 to 16 in. (30 to 40 cm)

A Selecta product.

Available as unrooted cuttings exclusively through Ball Seed, and as rooted cuttings from selected Root & Sell locations.

Features improved branching for masses of blooms and better series uniformity.

- **Berry White** 'KLEOE15257'
- **Dark Violet+White** 'KLEOE14225'
- **Lemon Ice** 'KLEOE14228'
- **Pink** 'KLEOE14226'
- **Purple** 'KLEOE14227'
- **Silver** 'KLEOE15248'
- **Violet Ice** 'KLEOE14223'
- **Yellow** 'KLEOE14232'

OSTEOSPERMUM ☀️
O. ecklonis

Serenity™ Series

A Ball FloraPlant product, available exclusively through Ball Seed.

A "Real Series" – all colors in the series are perfectly timed together and uniform in habit.

- **New Lavender Frost Improved** Improved branching, flower form. 'Balservavosim'
- **New Spring Day** Flowers range from white to pink on the top and yellow on the bottom; even cuter when a few blooms are closed in the morning! 'Balseringda'

FlowerPower™ Compact Series

A Selecta product.

- **New Yellow** 'KLEOE15267'

FlowerPower™ Series

A Selecta product.

- **New Dark Purple** 'KLEOE13206'
- **New Lavender Pink** 'KLEOE14235'
- **New Pink** 'KLEOE15272'
- **New Violet** 'KLEOE12202'

Zion™ Series

A Selecta product.

- **New Lavender+Purple Eye** 'KLEOE15289'
- **New Magic Orange** 'KLEOE13209'
- **New Pure Yellow** 'KLEOE14243'



NEW Dolce Vita

MEDINILLA 
Medinilla

New Dolce Vita
New Magnifica

Height: 12 to 15 in. (30 to 38 cm)

Spread: 20 in. (50 cm)

A Ball Ingenuity product, available exclusively through Ball Seed.

Available as prefinished 6-in. (15-cm) product from Northend Gardens.

Unique, attractive plants provide a long window of color. Double-flowered Dolce Vita and single-flowered Magnifica are both easy to finish and have blooms that stop consumers in their tracks.



NEW Magnifica



NEW Headliner Red



NEW Headliner Yellow

PETUNIA 🌻*P. cultivars***Famous™ Series****A Selecta product.**

- **New Apricot Sorbet** 'KLEPH14270'
- **New Berry Sorbet** 'KLEPH14271'

Headliner™ Series**A Selecta product.**

- **New Red** 'KLEPH14248' PPAF
- **New Yellow** 'KLEPH15261'

Starlet™ Series**A Selecta product.**

- **New Carmine Star** 'Balspunrast'
- U.S. 7,642,436
- **New Magenta** 'KLEPH15254'

SweetSunshine™ Series**A Selecta product.**

- **New Light Pink** 'KLEPH14241'
- **New Magenta** 'KLEPH13234'
- **New Purple Picotee** 'KLEPH14252'
- **New Violet Vein** 'KLEPH14246'



NEW Starlet Carmine Star



NEW Starlet Magenta



NEW SweetSunshine Light Pink



NEW SweetSunshine Violet Vein

**THE EASIEST WAY TO FIND – AND GET – WHAT YOU NEED.**

Ball WebTrack® puts tens of thousands of products at your fingertips 24/7. Best of all, it's free! Manage your orders at ballseed.com/webtrack.



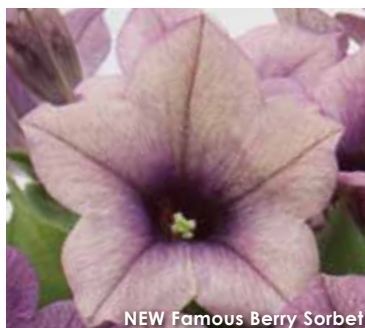
NEW SweetSunshine Magenta



NEW SweetSunshine Purple Picotee



NEW Famous Apricot Sorbet



NEW Famous Berry Sorbet

PETUNIA 🌻
P. x hybrida

Glow Series

A Ball FloraPlant product, available exclusively through Ball Seed.

- **New Blue Vein** 'Fortunbluve' PPAF
- **New Cappucino**
- **New Hot Pink** 'Glow Hot Pink' PP 19,135
- **New Peach Morn** 'Flortunpemo' PPAF
- **New Picotee Blue**
- **New Pink Morn** 'Flortunpimorn' PPAF
- **New Purple**
- **New Sky Blue**
- **New Snowy White**



NEW Glow Picotee Blue Petunia



NEW Glow Blue Vein Petunia

Sun Spun® Series

A Ball FloraPlant product, available exclusively through Ball Seed.

A "Real Series" – all colors in the series are perfectly timed together and uniform in habit.

- **New Pink** 'KLEPH11199'
 - **New Raspberry Star** 'Balspunrast'
- U.S. 7,642,436
- **New Red Improved** Bolder, deeper red flowers with purplish eye. 'Balspunredim'
 - **New Salmon** 'KLEPH13227'



NEW Glow Pink Morn Petunia



NEW Glow Peach Morn Petunia

PETCHOA 🌻

Petunia x calibrachoa

SuperCal® Series

Produced by Ball FloraPlant.

- **New Light Yellow**
- **New Pink**

SUPERCAL are bred by Sakata. SUPERCAL is a registered trademark of Sakata Seed Corporation.



NEW Sun Spun Red Improved Petunia



NEW Sun Spun Salmon Petunia

WEBTRACK®

CUT YOUR ORDERING TIME DRASTICALLY. Turn hundreds of clicks into one "Easy Order Upload" on Ball WebTrack®... for free. Save your time at ballseed.com/webtrack.



NEW Sun Spun Pink Petunia



NEW Sun Spun Raspberry Star Petunia



NEW SuperCal Light Yellow Petchoa



NEW SuperCal Pink Petchoa



NEW Kolorscape Lemon Fizz Shrub Rose

SHRUB ROSE 🌻*Rosa***Kolorscape® Collection****Super-strong, no-fade yellow.****A Ball Ingenuity product, available exclusively through Ball Seed.****Bred by W. Kordes' Söhne.**

- **New Lemon Fizz™** One of the best yellow landscape roses on the market.

KOLORSCAPE is a U.S. registered trademark and LEMON FIZZ is a trademark of Newflora LLC.

SALVIA 🌻🌿*S. guaranifca***New Black & Bloom****Bigger blooms...bigger impact!****Height:** 36 to 48 in. (90 cm to 1.2 m)**Spread:** 36 to 48 in. (90 cm to 1.2 m)**A Ball FloraPlant product, available exclusively through Ball Seed.**

A "Season Extender" – colorful, combo-friendly, heat-tolerant plants celebrate Summer.

Available as certified, disease-free cuttings through the Ball Certified Plants program.

Impressive newcomer delivers thicker leaves, larger blooms and darker stems than Black & Blue. It's a "tough as nails" performer, thriving in heat, drought and humidity. Desirable blue color against the black stems stands out in every landscape and planter. Useful in 4-in. (10-cm) pots to 2-gallon containers. 'Black & Bloom' PPAF



NEW Black & Bloom Salvia

SUTERA

See Bacopa, page 62.

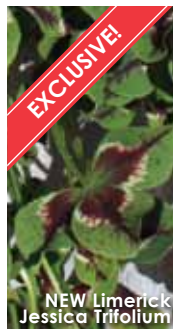
TRIFOLIUM 🌻*Trifolium***New Limerick™ Series****Height:** 4 in. (10 cm)**Spread:** 8 to 10 in. (20 to 25 cm)**A Ball Ingenuity product, available exclusively through Ball Seed.****Available as 100 and 200-liners.**

Easy-to-grow, quick-finish "spiller" mixes well with other plants. Perfect trailing habit adds a unique dimension to combos.

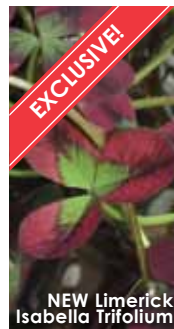
- **New Estelle** Dark center on a maroon leaf; light green edge.
- **New Isabella** Maroon with green base and dark streak.
- **New Jessica** Green with both white and purple markings.



NEW Limerick Estelle Trifolium



NEW Limerick Jessica Trifolium



NEW Limerick Isabella Trifolium

TRIXI® MULTILINERS

Wildly popular collection adds 11 new combos!

A Selecta product.

Trixi delivers perfectly balanced combos that are trialed and tested for success from greenhouse to garden. Bold and colorful, with lasting consumer performance.

- **New Big Falls** Bacopa Big Falls White, Dark Blue and Dark Pink.
- **New Blues** Verbena Blues Neon, Lavender Eye and Light Pink+Eye.
- **New Bolero** Calibrachoa MiniFamous Vampire, Neo Royal Blue and Compact Deep Yellow.
- **New Breakdance** Bidens Namid Early Yellow, Verbena Lascar Red Rose and Lobelia Magadi Electric Blue.
- **New Fairy** Scaevola Fairy Pink, Blue and White.
- **New Flirtini** Calibrachoa MiniFamous Double Lemon 16, Double Amethyst and Double Compact Pink.
- **New Party Favor** Calibrachoa MiniFamous Neo Pink, Neo White and Compact Blue.
- **New Pretty Princess** Calibrachoa MiniFamous Double Compact Pink, Double Compact Chiffon and Double Compact White.
- **New Sweet Candy** Calibrachoa MiniFamous Neo Royal Blue, Apricot Red Eye and Light Pink+Eye.
- **New Treasure Chest** Petunia Headliner Violet Dark Eye, Verbena Lascar White 16 and Lobelia Magadi Electric Purple.
- **New Wild Berry** Calibrachoa MiniFamous Neo Purple, Neo White and Compact Blue.

MORE "NEW FOR 2016"
TRIXI COMBOS!

These 10 Trixi combos are upgraded with improved genetics. Photos and info at selectanorthamerica.com.

Ayers Rock 16
Blueberry Parfait 16
Crazy for Crayons 16
Liberty Bell 16
Lollipop 16
Old Glory 16
Out of the Blue 16
Pop the Bubbly 16
Twinkle Star 16
Walk on a Cloud 16



NEW Treasure Chest



NEW Bolero



NEW Blues



NEW Breakdance



Branded pot is available from your preferred pot supplier. Order tags from The John Henry Company.



NEW Flirtini



NEW Sweet Candy



NEW Big Falls



NEW Party Favor



NEW Wild Berry



NEW Pretty Princess



NEW Fairy



NEW Aztec Magic Magenta Magic



NEW Aztec Magic Purple Magic Improved



NEW Aztec Magic Orchid Magic

VERBENA 🌞
V. x hybrida

Aztec® Magic Series

A Ball FloraPlant product, available exclusively through Ball Seed.

- **New Magenta Magic** 'Balazmagma'
- **New Orchid Magic** 'Balazorchma'
- **New Purple Magic Improved** Improved for solid bloom color and habit. 'Balazpurmai'

Blues Series

A Selecta product.

- **New Dark Violet** 'KLEVP15498'
- **New Neon** 'KLEVP13450'
- **New Red** 'KLEVP14490'
- **New White** 'KLEVP13425'



NEW Blues Dark Violet



NEW Blues Red



NEW Blues Neon



NEW Blues White



NEW Lascar Mango Orange



NEW Lascar Red



NEW Lascar Dark Violet



NEW Lascar Black Velvet



NEW Lascar Dark Pink



NEW Lascar White 16



NEW Pops Dark Red



NEW Pops Dark Violet



NEW Pops Pink

Lascar™ Series

A Selecta product.

- **New Black Velvet** 'KLEVP15618'
- **New Dark Pink** 'KLEVP15481'
- **New Dark Violet** 'KLEVP15483'
- **New Mango Orange** 'KLEVP15474'
- **New Red** 'KLEVP15488'
- **New White 16** 'KLEVP12434'

Renamed Lascar varieties:

- **Burgundy** (formerly Compact Burgundy)
- **Dark Red** (formerly Compact Dark Red)
- **Hot Rose** (formerly Compact Hot Rose)
- **Pink** (formerly Compact Pink)
- **Red Rose** (formerly Big Eye Red Rose)



NEW Pops White 16



NEW Pops Pink+Red Eye



NEW Pops Salmon+Red Eye

Pops™ Series

A Selecta product.

- **New Dark Red** 'KLEVP15470'
- **New Dark Violet** 'KLEVP15613'
- **New Pink** 'KLEVP15620'
- **New Pink+Red Eye** 'KLEVP15622'
- **New Salmon+Red Eye** 'KLEVP15616'
- **New White 16 Improved habit.** 'KLEVP15611'

ULTRA
COLOR,
ULTRA
STYLE

EXCLUSIVE!

NEW Sombrero Baja Burgundy

Beauty AND brawn make these coneflowers shine.

This strong and durable series promises super-full, super-compact, super-tough performance. You can plant **Sombrero**® in Spring and sell it the same year – no vernalization is needed and it bulks up FAST. Gardeners and landscapers love the exceptional Winter hardiness, the excellent branching, and of course, the standout colors!

**ECHINACEA** *E. x hybrida* (Coneflower)**Sombrero® Series**

Bred by Darwin Perennials; available exclusively through Ball Seed and Ball Ornamentals.

- **New Baja Burgundy** Rich burgundy color matures as blooms mature. 'Balsombabur' PPAF; U.S. 7,982,110
- **New Blanco** (*E. purpurea*) Crisp, clean white with overlapping petals. 'Balsomblanc' PPAF

Double Scoop™ Series

Bred by Darwin Perennials; available exclusively through Ball Seed and Ball Ornamentals.

- **New Lemon Cream** Opens yellow and matures to rich cream. 'Balsclemc' PPAF; U.S. 7,982,110



GET A LEG UP ON THE COMPETITION. 24/7 marketing support at Ball WebTrack®: thousands of photos...DIY bench cards...online catalogs for easy reference...and lots more. Boost your sales at ballseed.com/webtrack.





NEW Song Siren Angie Achillea

ACHILLEA 🌞

A. millefolium (Yarrow)

Song Siren™ Series

A Darwin Perennials product.

- **New Angie** Strong and long-lasting, rich rose color. 'Angie'

CAMPANULA 🌞

C. hybrid (Bellflower)

New Iridescent Bells

Height: 24 to 30 in. (60 to 75 cm)

Spread: 14 to 18 in. (35 to 45 cm)

USDA Hardiness Zones: 5 to 8

A Darwin Perennials product.

Available as unrooted cuttings and as rooted cuttings from selected Root & Sell locations.

Easy-to-grow hybrid shows off many light lavender blooms all Summer for better sell-through and excellent garden show. Non-seeding variety won't become invasive in gardens and landscapes. Tidy habit is ideal for patio containers, smaller beds and mid-borders. 'Iridescent Bells' PPAF



NEW Iridescent Bells Campanula

RHODANTHEMUM 🌞

R. hosmariense

New Casablanca 'Casablanca' PPAF

New Marrakech 'Marrakech' PPAF

Casablanca

Height: 10 to 12 in. (25 to 30 cm)

Spread: 10 to 12 in. (25 to 30 cm)

Marrakech

Height: 12 to 14 in. (30 to 35 cm)

Spread: 12 to 14 in. (30 to 35 cm)

USDA Hardiness Zones: 8 to 10

A Darwin Perennials product.

Available as unrooted cuttings and as rooted cuttings from selected Root & Sell locations.

Two easy-to-grow and easy-to-sell tender perennials bring early Spring color to containers and landscapes. Excellent season starters. More floriferous with better habit than other rhodanthemum. More cold tolerant than argyranthemum and osteospermum – will survive a freeze.



NEW Marrakech Rhodanthemum



NEW Casablanca Rhodanthemum



NEW Flutter Rose Pink Scabiosa



NEW Flutter Deep Blue Scabiosa

SCABIOSA 🌻🌻*S. columbaria* (Pincushion Flower)**New Flutter™ Series****Height:** 12 to 14 in. (30 to 35 cm)**Spread:** 10 to 12 in. (25 to 30 cm)**USDA Hardiness Zones:** 5 to 9**A Darwin Perennials product.****Available as unrooted cuttings and as rooted cuttings from selected Root & Sell locations.**

The compact habit and shorter peduncles make it easier to ship and show these colorful perennials. Flutter features larger blooms, deeper colors and a better habit than Butterfly Blue and Pink Mist. Hardy, very disease-resistant plants have a long flowering window. Beautiful in landscapes and mixed containers.

- **New Deep Blue** 'Balflutdelu' PPAF
- **New Rose Pink** 'Balflutropi' PPAF

**Meet Darwin Colombia**

Darwin Perennials' new production farm, formerly known as Green Leaf Plants™ Colombia, gives you better efficiency and greater availability of all the cutting-edge genetics you expect from Darwin Perennials.

Located near Bogotá, Colombia, this production facility supplies high-quality unrooted cuttings and tissue-culture propagated perennials, strengthening Darwin Perennials' supply chain into North America. With this new acquisition, we'll be able to bring you an extensive portfolio from Darwin Perennials, Blooms of Bressingham, Star Roses and Plants, and leading breeders from around the world...plus unsurpassed product quality and more innovation than ever!

**PINK
AND
BLUE?
CAN DO!**

EXCLUSIVE!

L.A. Dreamin'

Gardeners love it! Retailers love it! Growers love it!

This totally unique Mophead jumped right in and has already taken the crowded hydrangea market by storm. Saturated with color, **L.A. Dreamin'** is the first *H. macrophylla* to show blue, pink and everything in between all at once, on the same plant, without any aluminum sulfate or special fertilizer. Throw in great reblooming and L.A. Dreamin' is clearly a dream come true!



HYDRANGEA ☀️
H. macrophylla

L.A. Dreamin'

Height: 5 ft. (1.5 m)
Spread: 5 to 6 ft. (1.5 to 1.8 m)
USDA Hardiness Zones: 5 to 10
A Ball Ornamentals product.

A real standout in the crowded hydrangea market, L.A. Dreamin' can be grown successfully in all regions. Reblooms on new wood. Thrives in morning sun and afternoon shade. 'Lindsey Ann' PPAF



L.A. Dreamin'
HYDRANGEA

STRONG BRAND SUPPORT:



All-new LADreaminHydrangea.com features inspiring decorating ideas, easy care tips and handy retailer locator.

Mandatory L.A. Dreamin' pots and tags practically guarantee increased pull-through at retail. Order with your liners.

TERMS & CONDITIONS OF SALE

Visit ballseed.com for current Terms & Conditions of Sale.

Note: Ball Terms & Conditions of Sale are country/region specific. The following Terms & Conditions of Sale apply to product sold within the United States and Canada.

ACCEPTANCE OF TERMS

These terms and conditions shall govern orders for seeds, bulbs, plants, supplies and other materials (merchandise) placed with Seller. All negotiations with sales representatives or other agents of Seller are merged herein. No modification of these terms and conditions shall be effective unless in writing signed by Seller. Placement of the order shall constitute Purchaser's acceptance of these terms and conditions. All orders are subject to acceptance by Seller at our offices in West Chicago, Illinois.

LIMITATION OF WARRANTY

Seller warrants, to the extent required by law, that merchandise conforms to the description appearing in Seller's catalog and on container labels, within recognized tolerances. SELLER MAKES NO OTHER OR FURTHER WARRANTY, EXPRESS OR IMPLIED. ALL OTHER OR FURTHER WARRANTIES, INCLUDING ANY WARRANTIES OF MERCHANTABILITY, TITLE, NON-INFRINGEMENT AND FITNESS FOR A PARTICULAR PURPOSE, ARE EXCLUDED. Certain merchandise may be separately warranted by the manufacturer. Seller does not adopt or ratify any manufacturer warranties, express or implied, and Seller shall have no liability thereunder. Seller does not adopt or ratify any manufacturer warranties, express or implied, made by Purchaser upon resale of the merchandise, and Seller shall have no liability thereunder.

LIMITATION OF REMEDY

PURCHASER'S SOLE AND EXCLUSIVE REMEDY SHALL BE REFUND OF THE PURCHASE PRICE. SELLER'S LIABILITY, WHETHER FOR BREACH OF CONTRACT, BREACH OF WARRANTY, NEGLIGENCE, PRODUCTS LIABILITY OR ANY OTHER THEORY OF LIABILITY, IS LIMITED TO THE AMOUNT OF THE PURCHASE PRICE. UNDER NO CIRCUMSTANCES SHALL SELLER BE LIABLE FOR DAMAGES IN EXCESS OF THE PURCHASE PRICE, OR FOR ANY SPECIAL, INCIDENTAL, INDIRECT OR CONSEQUENTIAL DAMAGES.

EXCLUDED USE

Merchandise is not intended for immediate or eventual sale to commercial growers, truck farmers, market gardeners or others who sell fruit or vegetables to the end user.

MANDATORY ARBITRATION

ANY CLAIM WHICH PURCHASER MAY HAVE AGAINST SELLER ARISING OUT OF OR RELATING TO THE SALE OF THE MERCHANDISE SHALL BE SETTLED BY BINDING ARBITRATION IN ACCORDANCE WITH THE COMMERCIAL ARBITRATION RULES OF THE AMERICAN ARBITRATION ASSOCIATION, SAID ARBITRATION TO BE VENUED IN COOK OR DUPAGE COUNTIES, ILLINOIS. The laws of several states require arbitration, conciliation or mediation of disputes involving allegedly defective seed before legal action may be taken. Purchaser should contact the State Department Of Agriculture for information. Such laws typically require that a complaint be filed with the State Department Of Agriculture in time to permit inspection of the seed, crops or plants. If such a complaint is filed, a copy must be sent to Seller by registered or certified mail.

GOVERNING LAW, JURISDICTION & VENUE

The laws of the State of Illinois, including but not limited to the Uniform Commercial Code as adopted therein, shall govern all matters arising out of or relating to Seller's sale of merchandise. ANY DISPUTE NOT SUBJECT TO ARBITRATION AND ANY ACTION TO ENFORCE AN ARBITRATION AWARD ARISING OUT OF OR RELATING TO THE SALE OF MERCHANDISE HEREUNDER SHALL BE MAINTAINED IN THE STATE OR FEDERAL COURTS LOCATED IN DUPAGE OR COOK COUNTIES, ILLINOIS, AND PURCHASER SUBMITS TO THE JURISDICTION OF AND VENUE IN SAID COURTS.

INDEMNITY

By accepting merchandise, Purchaser agrees to defend Seller, to hold it harmless and indemnify it from and against any claim or loss asserted by any or all transferees of such merchandise or users of the products of such merchandise who are not notified by Purchaser in writing of Limitation of Warranty, Limitation of Remedy, Mandatory Arbitration, Governing Law Jurisdiction and Venue, and Notice Regarding Seed-Borne Diseases in language substantially equivalent to that contained in these Terms and Conditions of Sale.

PRICES

All prices are subject to change without notice. The price in effect at time of shipment will prevail. Prices do not include installation; Seller takes no responsibility, and shall have no liability for installation. Requests to package seed in unlisted sizes will incur a charge of \$0.75 per packet. Additional processing and handling charges may be added.

PAYMENT

Payment is due in invoiced currency and in accordance with the terms specified on invoice. In the event of default in the payment of any amount when due, and in addition to all other rights and remedies available to Seller, SELLER SHALL BE ENTITLED TO COLLECT A LATE CHARGE OF 2% PER MONTH (24% PER YEAR) OR THE MAXIMUM RATE ALLOWED BY LAW, WHICHEVER IS LESS, ON ALL AMOUNTS PAST DUE FROM THE DATE DUE UNTIL THE DATE PAID. A FEE OF \$25.00 WILL BE CHARGED FOR ANY RETURNED CHECK, DECLINED EFT TRANSACTION OR DECLINED BANKCARD TRANSACTION.

FREIGHT & HANDLING CHARGES, INSPECTION, DAMAGED GOODS

The freight and handling charge on Purchaser's invoice covers shipment of the merchandise to Purchaser's destination, and replacement or credit for damaged merchandise if the steps listed here are followed. PURCHASER WILL NOT REFUSE OR RETURN GOODS, OR THE RIGHT TO FILE A CLAIM IS LOST AND PURCHASER WILL STILL BE LIABLE FOR THE MATERIAL AND THE FREIGHT. When Purchaser receives shipment:

- 1) Count all cartons.
- 2) Inspect all cartons for external damage.
- 3) Check for open or resealed cartons.
- 4) Note any damages, shortages, open or resealed cartons on the delivery receipt; the carrier's representative must also sign the receipt.
- 5) Open all boxes immediately and inspect for damage due to weather-related issues, such as scorched, frozen or broken plants; material shortages; etc. NOTIFY SELLER IMMEDIATELY IF A SHIPMENT IS DAMAGED. Call the Ball Traffic Department at 800 879-BALL to report the damage and receive details on what is needed to file a claim.

CANCELLATION POLICY

Cancellations for unrooted cuttings must be received at least 30 days prior to scheduled ship date. Cancellations for liners or seed-raised plugs must be received prior to stick or sow date.

NOTICE & RETURN

Seller shall have no liability for any defect unless notice is given promptly, not to exceed thirty (30) days after such defect is or should have been discovered. No merchandise may be returned without Seller's prior written authorization. Requests to return merchandise must be made within ten (10) days after delivery. All returns must be in accordance with Seller's shipping instructions with freight paid by Purchaser. All requests for return of merchandise must be made to Ball at 800 879-BALL. The Purchaser will also be asked to provide a letter stating the reason for the return.

The order number or invoice number must accompany the return in order to expedite the credit. NOTE: No seed will be accepted without prior notification to Ball at 800 879-BALL. Effective immediately, seed that is returned without authorization will not be accepted and credit will not be issued. For all customers in the United States, a FedEx call tag will be issued upon authorization of return. There is a \$10.00 freight charge for the FedEx return. Seed must be returned in the original condition within thirty (30) days of the ship date for full credit. No open packages will be accepted. If seed is returned within thirty one (31) to sixty (60) days after ship date, full credit will be given but a 15% restocking charge will be assessed. No credit or replacement will be given for seed returned after sixty one (61) days from our ship date. Because Ball® Controlled Growth seed is perishable and has a shorter shelf life, no returns of these products will be accepted.

DELAYS, SHORTAGES & SUBSTITUTIONS

Seller shall not be responsible for delays in delivery or for losses resulting from such delays. Seller reserves the right to make partial shipment. In the event of shortages, Seller may substitute such other, similar merchandise as is available.

PLANT PROTECTION

Varieties described herein may be protected by United States Plant Variety Protection, United States Plant Patents, Utility Patents, and/or Plant Breeders' Rights. Many of the varieties are also protected by the Flowering-Only License Agreement as well as registered with the Canadian Ornamental Plant Foundation. These varieties may not be reproduced without authorization. The breeder or authorized representative has the right to inspect customer's nurseries during normal business hours to assess compliance with the restrictions on use of protected varieties.

TRADEMARKS

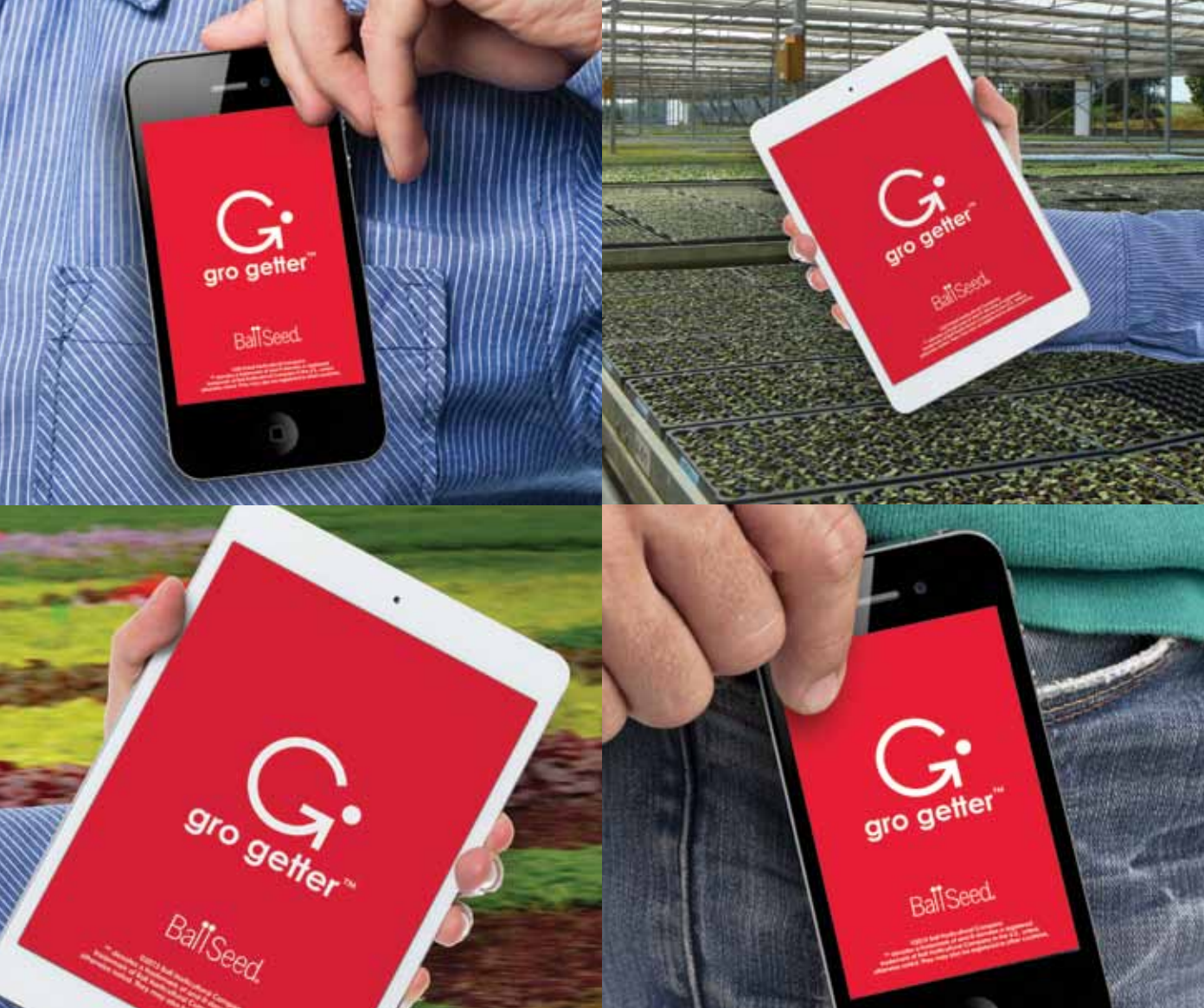
Trademarks are the property of Ball Horticultural Company, unless otherwise indicated.

NOTICE REGARDING SEED-BORNE DISEASES

Seller makes no representation regarding the freedom from seed-borne diseases of the seed sold and disclaims any liability relating to such diseases, whether previously known to exist or not identified until this seed is grown.

DISCONTINUED SEED VARIETIES FOR 2016

Variety	Recommended Replacement	Variety	Recommended Replacement	Variety	Recommended Replacement
ANNUALS					
Abutilon Bella Apricot Shades	Bella Select Mix	Petunia Bravo Blue Vein	TriTunia Blue Vein	Viola Sorbet Blueberry Cream	Sorbet XP Yellow Frost
Abutilon Bella Red	Bella Select Mix	Petunia Bravo Mix	TriTunia ProForm Mix	Viola Sorbet Coconut Swirl	Sorbet XP Coconut Swirl
Abutilon Bella Salmon Shades	Bella Select Mix	Petunia Bravo Pink	TriTunia Pink	Viola Sorbet Jump Up Mix	Sorbet XP Jump Up Mix
Abutilon Bella Yellow	Bella Select Mix	Petunia Bravo Pink Vein	TriTunia Pink Vein	Viola Sorbet Orange Jump Up	Sorbet XP Orange Jump Up
Alcea Spring Celebrities Apricot	Spring Celebrities Pink	Petunia Bravo Plum	TriTunia Plum	Viola Sorbet Purple Jump Up	Sorbet XP Derim Jump Up
Angelonia Serena Lavender	Serenita Lavender Pink	Petunia Bravo Purple	TriTunia Violet	Viola Sorbet Sunny Royale	Admirer
Angelonia Serenita Mix	Serenita Mix Improved	Petunia Bravo Purple Star	TriTunia Purple Star	Viola Sorbet XP Lavender Vein	Orange Purple Wing
Begonia Sprint Red	Sprint Scarlet	Petunia Bravo Rose	TriTunia Red	Viola Sorbet XP Purple	Sorbet XP Lavender Pink
Begonia Stara Mix	-	Petunia Bravo Salmon	TriTunia Rose	-	Sorbet XP
Begonia Stara Pink	-	Petunia Bravo Salmon Vein	TriTunia Salmon	-	Purple Improved
Begonia Stara Rose	-	Petunia Bravo Sky Blue	TriTunia Salmon Vein	Viola Sorbet XP Purple Ice	Sorbet XP Lavender Pink
Begonia Stara Scarlet	-	Petunia Bravo Vein Mix	Dreams Sky Blue	Viola Sorbet YTT	Sorbet XP YTT
Begonia Stara White	-	Petunia Bravo White	TriTunia Vein Mix	Viola Sorbet YTT Babyface	Sorbet XP YTT
Tuberous Begonia	-	Petunia Celebrity Peach Ice	TriTunia White	Zinnia Double	Double Zahara
Fortune Deep Red	Fortune Scarlet	Petunia Daddy Strawberry	Spring Madness	Zahara Cherry	Cherry Improved
Tuberous Begonia	-	Petunia Double Cascade	Daddy Red	Zinnia Zahara Cherry	Zahara Cherry Improved
Illumination Peaches N Cream	Illumination Apricot	Soft Pink	-	CUT FLOWERS	
Callibrachoa Kabloom Red	-	Petunia Dreams Fuchsia	Double Cascade Pink	Ageratum Red Sea	-
Celosia Amigo Magenta	Amigo Mix	Petunia Easy Wave Mystic Pink	TriTunia Violet	Carthamus Grenade White	-
Celosia Amigo Mahogany Red	Amigo Mix	Petunia Easy Wave Salmon	TriTunia Violet	Celosia Bombay Orange	Bombay Flora
Celosia Amigo Neon Rose	Amigo Mix	Petunia Easy Wave Shell Pink	TriTunia Violet	Celosia Bombay Salmon	Bombay Bronze
Celosia Amigo Red	Amigo Mix	Petunia Fuseables Firmin	TriTunia Violet	Celosia Bombay Sunshine	Bombay Figo
Celosia Amigo Yellow	Amigo Mix	Petunia Fuseables Pink Dream	TriTunia Violet	Celosia Bombay Velvet	Bombay Cherry
Celosia China Town	Tornado Red	Petunia Fuseables Vogue	TriTunia Violet	Celosia Bombay Yellow Gold	Bombay Figo
Celosia Ice Cream Cherry	Ice Cream Cherry Improved	Petunia Limbo Blue	Limbo GP Blue	Dianthus Sweet Mix	Sweet Mix Improved
Celosia Ice Cream Mix	Ice Cream Mix Improved	Petunia Limbo Sweet Pink	Limbo GP Sweet Pink	Dianthus Sweet White	Sweet White Improved
Coleus Kong Scarlet	Kong Scarlet Improved	Petunia Limbo Violet	Limbo GP Violet	Larkspur Imperial Giants	-
Dianthus Dynasty Red	Dynasty Red Improved	Petunia Limbo White	Limbo GP White	Carmine King	-
Dianthus Panda Mix	-	Petunia Mambo Blue	Mambo GP Blue	Snapdragon Axiom Bronze	Potomac Dark Orange
Dianthus Sweet Mix	Sweet Mix Improved	Petunia Mambo Burgundy	Mambo GP Burgundy	Snapdragon Axiom Orange	Potomac Orange
Dianthus Sweet White	Sweet White Improved	Petunia Mambo Pink Morn	Mambo GP Pink Morn	Snapdragon Axiom Rose	Potomac Rose
Gozania Daybreak Tiger Mix	New Day Tiger Mix	Petunia Mambo Sweet Pink	Mambo GP Red	Snapdragon Axiom Yellow	Potomac Yellow
Gozania New Day Mix	New Day Mix Improved	Petunia Mambo Violet	Mambo GP Sweet Pink	Snapdragon Calima Pink	Calima Deep Rose
Gerbera Mega Revolution	Mega Revolution	Petunia March Madness Mix	Mambo GP Violet	Snapdragon Paxia Candy Rose	Monaco Baltimore Rose
Scarlet with Dark Eye	Bright Red with Light Eye	Petunia Pretty Flora	-	Snapdragon Paxia Orange	-
Gerbera Revolution	Revolution	Formula Mix	Pretty Flora	Snapdragon Paxia Rose	Monaco Rose
Spring Pastels	Spring Pastels Improved	Petunia Pretty Flora Purple	Formula Mix Improved	Snapdragon Paxia White	Monaco White
Gerbera Revolution White with Light Eye	Revolution White with Light Eye Improved	-	Pretty Flora Purple Improved	Snapdragon Paxia Yellow	Monaco Yellow
Impatiens Impreza Rally Mix	Impreza Formula Mix	-	Pretty Flora White Improved	Snapdragon Paxia Yellow Starfire	Monaco Yellow
Impatiens Tempo Blue Satin	Dazzler Blue Pearl	-	TriTunia Blue	Stalace Fortress Mix	QIS Mix
Impatiens Tempo Burgundy	Dazzler Cranberry	-	-	Sunflower Coconut Ice	-
Impatiens Tempo Butterfly Mix	-	Petunia Storm Blue	-	GRASSES	
Impatiens Tempo Cancun Mix	Super Eflin Paradise Mix	Petunia Storm Evening Mix	-	Cardasteria Feather Pink	-
Impatiens Tempo Cherry Butterfly	-	Petunia Storm Lavender	TriTunia Lavender	Cardasteria Feather White	-
Impatiens Tempo Cinnamon	Super Eflin XP Punch	Petunia Storm Mix	TriTunia ProForm Mix	Milium Flashlights	-
Impatiens Tempo Coral Butterfly	-	Petunia Storm Pink	TriTunia Pink	Panicum Frosted Explosion	-
Impatiens Tempo Crimson	Super Eflin Ruby	Petunia Storm Pink Morn	TriTunia Pink Morn	Pennisetum setaceum	-
Impatiens Tempo Crystal Mix	Super Eflin Seaside Mix	Petunia Storm Red	TriTunia Red	PERENNIALS	
Impatiens Tempo Deep Pink	-	Petunia Storm Salmon	TriTunia Salmon	Alyssum Luna	-
Impatiens Tempo Lavender	Super Eflin XP Blue Pearl	Petunia Storm Violet	TriTunia Violet	Armeria Joystick Lilac Shades	Ballerina Lilac
Impatiens Tempo Mix	Dazzler Mix	Petunia Storm White	TriTunia White	Armeria Joystick Mix	Ballerina Mix
Impatiens Tempo Pastel Mix	Dazzler Baby Shower Mix	Petunia Supercascade Salmon	Dreams Salmon	Armeria Joystick Red	Ballerina Red
Impatiens Tempo Peach Frost	-	Petunia Ultra Blue	TriTunia Blue Star	Armeria Joystick White	Ballerina White
Impatiens Tempo Pink	Dazzler Pink	Petunia Ultra Burgundy	TriTunia Burgundy	Campanula Advance Blue	Rapido Blue
Impatiens Tempo Pink Frost	-	Petunia Ultra Crimson Star	TriTunia Crimson Star	Campanula Advance White	Rapido White
Impatiens Tempo Salsa Mix	Super Eflin Cha Cha Mix	Petunia Ultra Fresh White	TriTunia White	Campanula Alpine Breeze Blue	Pearl Deep Blue
Impatiens Tempo Scarlet	Super Eflin XP Scarlet	Petunia Ultra Lilac	TriTunia Lavender	Campanula Alpine Breeze White	Pearl White
Impatiens Tempo	-	Petunia Ultra Pink	TriTunia Pink	Campanula Clips Blue	Pearl Deep Blue
Strawberry Butterfly	-	Petunia Ultra Plum	TriTunia Plum	Campanula Clips Deep Blue	Pearl Deep Blue
Impatiens Tempo Watermelon	Super Eflin XP Melon	Petunia Ultra Red	TriTunia Plum	Campanula Clips White	Rapido White
Impatiens Tempo	-	Petunia Ultra Red Star	TriTunia Red	Chenopodium Aista	-
Wedgewood Mix	Dazzler Merlot Mix	Petunia Ultra Rose	TriTunia Red Star	Dianthus Shrimp	-
Impatiens Tempo White	Dazzler White	Petunia Ultra Rose Star	TriTunia Rose	Digitalis Cactillon	-
New Guinea Impatiens	-	Petunia Ultra Sky Blue	TriTunia Rose Star	Echinacea Magnus	-
Divine Burgundy	Divine Violet Improved	Petunia Ultra Star Mix	Dreams Sky Blue	Erysimum Gold Rush	-
New Guinea Impatiens	Divine Pink Improved	Petunia Ultra Violet	TriTunia Star Mix	Gaura The Bride	Sparkle White
Divine Pink	Divine Violet Improved	Petunia Ultra White	TriTunia Violet	Iberis Snowflake	Whiteout
New Guinea Impatiens	Divine Violet Improved	Plumbago Escapade Blue	TriTunia White	Lysimachia Beaujolais	-
Divine Violet	-	Plumbago Escapade White	-	Penstemon Violet Dusk	-
Lisianthus Sapphire Blue	-	Primula Hethor	-	Polemonium Bambino Blue	-
Lisianthus Sapphire Blue Chip	-	Standard Orange	-	Primula viali	-
Lisianthus Sapphire Double White	-	Primula Pageant	-	Sagina Crispy	-
Lisianthus Sapphire Pink Rim	-	White Yellow Eye	-	Saxifraga Purple Robe	-
Lisianthus Sapphire White	-	Ranunculus Bloomingdale	Danessa White	Verbascum Temptress Purple	-
Marigold Little Devil Fire	Hot Pak Fire	Blue Bicolor	Bloomingdale Mix	Verbascum Temptress White	-
Marigold Little Hero Fire	Hot Pak Fire	Ranunculus Bloomingdale Golden	Bloomingdale Mix	VEGETABLES	
Marigold Little Hero Mix	Hot Pak Mix	Ranunculus Bloomingdale	Bloomingdale Mix	Beet Alto	-
Marigold Little Hero Orange	Hot Pak Orange	Orange Bicolor	Bloomingdale Mix	Broccoli Packman	Lieutenant
Marigold Little Hero Yellow	Hot Pak Yellow	Ranunculus Bloomingdale Pink	Bloomingdale Mix	Brussels Sprouts Royal Marvel	Franklin
Marigold Taishan Mix	Taishan Mix Improved	Ranunculus Bloomingdale Pure Yellow	Bloomingdale Mix	Cabbage Pacifica	Stonehead
Marigold Taishan Orange	Taishan Orange Improved	Ranunculus Bloomingdale Purple Shades	Bloomingdale Mix	Carolinian Wilda's Bride	-
Marigold Taishan Yellow	Taishan Yellow Improved	Ranunculus Bloomingdale Red	Bloomingdale Mix	Eggplant Emerald Isle	-
Marigold Zenith Orange Red	Zenith Orange	Ranunculus Bloomingdale Rose	Bloomingdale Mix	Lettuce Simpson	Simpson Elite
Pansy Cool Wave Yellow	Cool Wave Golden Yellow	Ranunculus Bloomingdale	Bloomingdale Mix	Onion Red Rum	Red Baron
Pansy Delta Orange Blotch	Delta Premium Pure Orange	Ranunculus Bloomingdale	Bloomingdale Mix	Pepper Bel Boy	Wizard
Pansy Delta Yellow Red Wing	Matrix Red Wing	Ranunculus Bloomingdale	Bloomingdale Mix	Pepper Cherozo	-
Pansy Fraidy Cat Mix	-	Ranunculus Bloomingdale Rose Pink Bicolor	Bloomingdale Mix	Pepper Cute Stuff Gold	-
Pansy Freefall Lemon	Cool Wave	Ranunculus Bloomingdale Tangerine	Bloomingdale Mix	Pepper Fooled You	Tricked You
Pansy Purple Wing	Sunshine 'N Wine	Ranunculus Bloomingdale White	Bloomingdale Mix	Pumpkin Orange Rave	Howden
Pansy Fizzle Sizzle Passion Fruit	Fizzle Sizzle Raspberry	Schizanthus Star Parade Mix	Bloomingdale Mix	Pumpkin Orange Smoothie	Small Sugar
Pansy Karma Blue Butterfly	-	Stock Sugar & Spice Mix	-	Pumpkin Windsor	Kandy Korn Plus
Pansy Karma Blue Sun	Spring Matrix	Stock Sugar & Spice Rose	-	Spinach Tyeek	Avon
Pansy Majestic Giants II	Midnight Glow	Stock Sugar & Spice Yellow	-	Tomato Blue Pearl	-
Ocean Blotch	Majestic Giants II	Verbena Peaches & Cream	-	Tomato Golden Honey Bunch	Lemon Cherry
Pansy Mariposa	Mid Blue Blotch	Vinca Cooler Blush	-	Tomato Roma Baby Red	Roma VF
Pansy Peach Blotch Shades	-	Vinca Cooler Peppermint	-	Tomato Sweet Seedless	-
Pansy Matrix Opal Mix	Spring Matrix Pastel Mix	Vinca Cooler Pink	-	DISCONTINUED VEGETATIVE VARIETIES FOR 2016	
Pansy Panola Lavender Blotch	Panola Lilac Shades	Vinca Cooler Strawberry	-	Ball FloraPlant: See the inside back cover of the 2016 Ball FloraPlant Catalog or visit ballfloraplant.com .	
Pansy Reserve Amaretto	-	Vinca Pacifica XP	-	Burpee: Visit burpeehomegardensbrand.com .	
Pansy Reserve Chambard	-	Bubble Gum Mix	-	Darwin Perennials: Visit darwinperennials.com .	
Pansy Reserve Choccolati	-	Vinca Pacifica XP	-	Selecta: See page 109 the 2016 Selecta Catalog or visit selectanortheramerica.com .	
Pansy Reserve Hypnotiq	-	Christmas in July Mix	-		
Pansy Scaredy Cat Mix	-	Vinca Pacifica XP	-		
Pansy Ultima Radiance	-	Cranberry Relish Mix	-		
Deep Blue	Ultima Radiance Violet	Viola Penny Violet Beacon	Sorbet XP Violet Beacon		
Pentas Graffiti Red Lace	Graffiti Red Velvet	Viola Shangi-la Marina	Sorbet XP Marina Improved		
Petunia Baby Duck Yellow	Shock Wave Yellow	Viola Sorbet	Sorbet XP		
Petunia Bravo Blue	TriTunia Blue	Banana Cream	Lemon Ice Blotch		

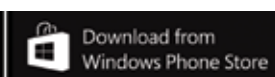


Where you need it. When you need it most.

An industry first...**take-it-with-you plant info, photos and culture** for virtually any crop in our catalogs.

- Works anywhere, anytime ...no connection needed
- Use the search option that works for you
- Take notes, save favorites and share through email

gro getter™ is available FREE at grogetterapp.com.



INDEX



SEED VARIETIES 4-55

Annuals.....	6
Cut Flowers.....	36
Perennials.....	40
Vegetables.....	44

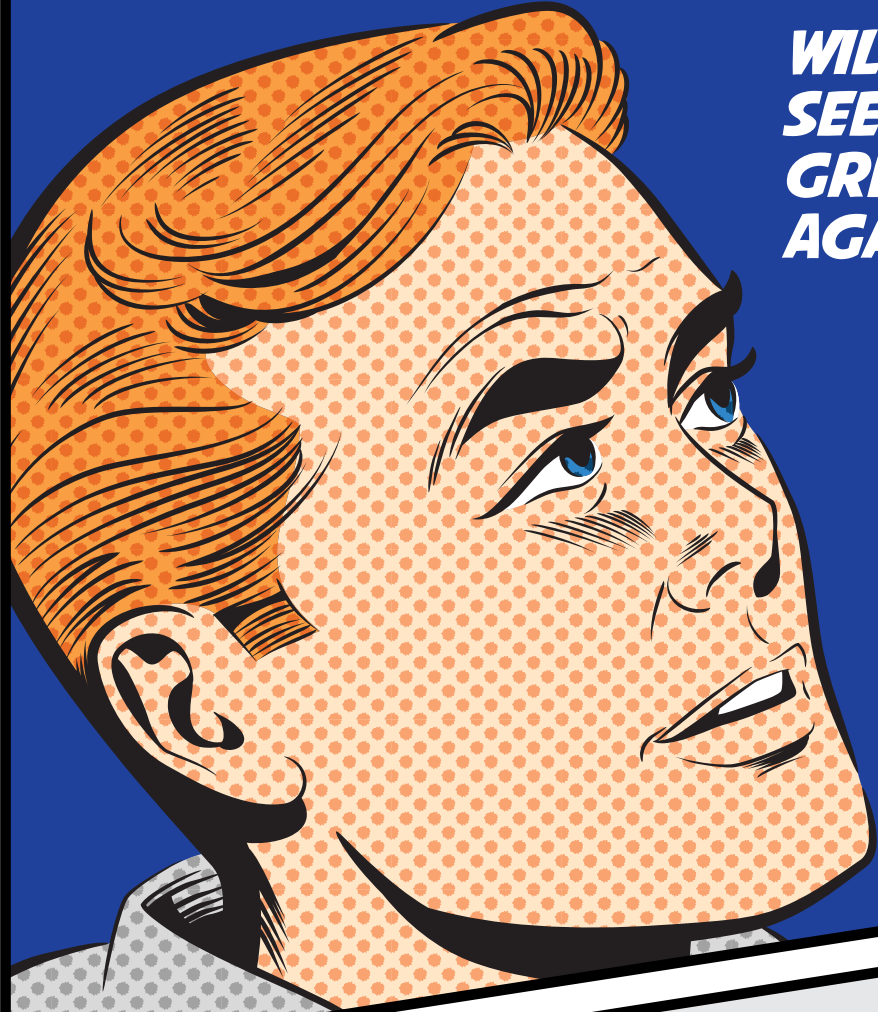


VEGETATIVE VARIETIES 60-97

Annuals.....	62
Perennials.....	92
Ball Ornamentals.....	96
<hr/>	
Achillea	93
Ageratum.....	6
Anemone	36
Angelonia	6, 62
Argyranthemum	62
Bacopa	62
Ball WebTrack	Back cover
Basil	45
Beet.....	44
Begonia.....	7, 63
Bells of Ireland.....	36
Bidens	63
Bracteantha	63
Broccoli.....	44
Brussels Sprouts	44

Burpee.....	56	Lisianthus	37
Cabbage.....	44	Lobelia.....	41, 79
Calamintha.....	45	Lupinus.....	42
Calceolaria	63	Marigold.....	21
Calibrachoa	10, 64	Medinilla.....	84
Campanula	41, 93	Melon.....	47
Canna	9	Milium	42
Cantaloupe	47	MixMasters.....	80
Carnation.....	67	New Guinea Impatiens	20, 77
Celery	45	Onion	47
Celosia.....	9, 36, 69	Osteospermum.....	82
Chives.....	45	Pak Choi.....	47
Coleus.....	15, 68	Pansy	24
Convolvulus	69	Pea.....	47
Cosmos.....	14	Pentas.....	25
Cucumber.....	44	Pepper.....	48
Cyclamen	12	Petchoa	86
Dahlia	71	Petunia	26, 85
Darwin Colombia.....	95	Primula.....	30
Delphinium.....	36	Ranunculus	30
Dianthus	16, 37, 67, 71	Rhodanthemum.....	94
Dipladenia	70	Rose	87
Discontinued List.....	99	Salvia	31, 87
Echinacea.....	92	Scabiosa.....	95
Euphorbia.....	17, 72	SimplySalad.....	46
First-Year-Flowering Perennial Combos .	43	Snapdragon.....	31, 39
Flowering Kale	37	Spinach	51
Fuchsia	72	Squash.....	51
Gazania.....	20	Strawberry	51
Geranium	20, 73	Statice	See Limonium
Gerbera.....	18	Sunflower.....	39
Gomphrena.....	37	Sutera	62
Gro Getter App.....	100	Terms & Conditions.....	98
Heliotrope	73	Tomato	52
Herbs.....	45	Trifolium	87
Hibiscus.....	74	Trixi	88
Hydrangea.....	96	Verbena	31, 42, 90
Impatiens.....	76	Vinca	32
Impatiens, New Guinea	20, 77	Viola.....	34
Ipomoea	78	WebTrack	Back cover
Kale	46	Zinnia	35
Lavandula.....	40	Zucchini.....	51
Lettuce & Salad Greens	46		
Limonium.....	37		

Visit ballseed.com for current Variety Protection Information.



**WILL I EVER
SEE THE
GREENHOUSE
AGAIN?**

**WEBTRACK GETS
YOU AWAY FROM
YOUR DESK!**

WEBTRACK[®]

Manage your business anytime,
anywhere. Sign up...take the
tour... it's all FREE!

ballseed.com/webtrack



BallSeed[®]

Order at ballseed.com/webtrack.
Talk to us.
Ball Seed: 800 879-BALL
Ball ColorLink[®]: 800 686-7380

Visit ballseed.com for current Terms & Conditions of Sale.
©2015 Ball Horticultural Company 15190
™ denotes a trademark of and ® denotes a registered trademark of Ball Horticultural Company and/or Selecta Klemm GmbH & Co. in the U.S., unless otherwise noted. It may also be registered in other countries. BURPEE and BURPEE HOME GARDENS are registered trademarks of W. Atlee Burpee Co.