

CIDER APPLES

Cider apples have an 'astringent' or 'bitter' taste caused by compounds such as tannins in high concentrations. These tannins are perfect for creating tasty dry cider.

Cider varieties are often categorized according to their tannin and acid levels. Unfortunately we do not have this work done yet – it is a project we would love to do in the near future. Instead we present some varieties which, on tasting, seem to hold some promise in this regard.

BALLYVAUGHAN SEEDLING (AKA WHITE MOSS)



A medium-sized apple useful for juicing and baking.

A healthy tree that produces prolifically and reliably.

Renowned for producing abundantly in windswept orchards at Ballyvaughan, Co. Clare in the early 20th century. Under the name White Moss it was grown popularly in Co. Kilkenny throughout the 19th and 20th century.

Flowering: Late Season
Picking: Mid (September)

BEWLEY (AKA KNIGHT'S TEMPLAR)



Fruitful, vigorous & disease resistant.

Discovered on the banks of the river Finisk in the townland of Bewley, the parish of Kilmolash, Co. Waterford.

The last remaining tree is a veteran of an old orchard adjoining a monastery (in ruins) shown on OS maps of 1840. The monastery was associated with the Knight's Templar at some points in its history; but no documentary evidence has been found to directly link the religious order to this variety.

Slightly sharp, juicy, crisp.

Flowering: Mid Season
Picking: Late October

GIBBON'S RUSSET



A tasty, juicy and crunchy apple. Medium sized with russet patches.

The tree shapes nicely and is easy to prune. Healthy and a reliable cropper.

Popular in Kilkenny since the early 1800's and later in Cork, Dublin and Meath.

Flowering: Mid Season
Picking: Mid (September)
Ripe: September

GIBBY'S APPLE (AKA CIDER CALEDON)



A tangy crisp bite. Often a heavy cropper of medium sized fruit suitable for fresh eating, juicing or cider.

Grown in Armagh and Antrim in the early 20th century.

Flowering: Mid Season
Picking: Mid (September)
Ripe: September

MCGRIGOR'S PROLIFIC CIDER



It's complex and astringent flavour may be best suited to cider making.

Some susceptibility to scab. But this need not be a worry to cider apple growers who don't need perfect looking fruit.

Discovered by Ian McGrigor in Co. Kerry who brought it and several other apple and pear varieties to our attention. Origins still under research by ISSA.

Flowering: Mid to Late Season
Picking: September.

VALENTINE



Colourful apple useful for juicing, cider and baking.

Productive and reliable each year.

Requires a sunny location for best results. May require fruit thinning to achieve larger fruit.

First recorded in a survey of Kilkenny and Waterford in 1802.

Flowering: Mid Season
Picking: Mid (September)

CRAB APPLES

Crab apples are valued for their ornamental blossom in Springtime and for their high-pectin fruit, useful for making jams and jellies.

Crab apples also act as useful sources of pollen for cross-pollination of other apple varieties.

HORSE'S HEAD



Some astringency which should give extra flavour to cider / jams.

Excellent cropper and looks beautiful laden with ripe red fruit in Autumn.

Discovered in Co. Kilkenny. The visual appeal of this variety has attracted much attention from visitors to our Research Orchard.

Flowering: Early Season
Picking: Aug-Sept

JOHN DOWNIE



Produces a mass of white flowers in the Springtime followed by clusters of small sweet red fruit resembling rose hips.

A popular ornamental variety from the UK.

Flowering: Mid Season
Picking: September

LOUGH KEY CRAB



Much valued for its beautiful deep pink blossom, dark purple tinged foliage, and deep crimson crab apples. Of good ornamental potential.

Small egg-sized fruit are perfect for making colourful jams and jellies.

Discovered growing in the estate of Lough Key Forest Park, Boyle, Co. Roscommon.

Flowering: Early Season
Picking: Mid (September)

MCGRIGOR'S CRAB



Produces abundant clusters of small crab apples ideal for jam making.

Decorative quality of beautiful blossom in May and fruit ripening to warm yellow in September.

Discovered by Ian McGrigor in Co. Kerry who brought it and several other apple and pear varieties to our attention. Still under research by ISSA.

Flowering: Mid Season
Picking: October

AHERNE BEAUTY
(AKA MERE DE MÉNAGE)



Very attractive crimson coloured fruit. Looks impressive on the tree in Autumn. Stores until October

Traditional to Northern counties since the early 1900s. Known under the original name since the late 1700s.

Flowering: Mid Season
Picking: Mid (September)

AN CAILÍN BÁN



Cooking apple with great flavour. Has some astringency which could be useful in cider-making.

A very productive and disease resistant tree which has attracted much attention in our Research Orchard.

The origins of this variety are still being researched by ISSA.

Flowering: Mid Season
Picking: Mid (September)
Stores: October

CULINARY

Varieties suitable for stewing and baking. Most are of good size for minimal peeling and coring.

Generally considered too acidic or not sweet enough for fresh eating, their flavour improves with cooking.

BALLYFATTEN



Large and distinctive fruit with attractive colour. Considered “an excellent baker”.

Stores until December.

A variety long grown and appreciated in Northern Ireland.

Flowering: Late Season
Picking: Mid (September)
Stores: October

BELVEDERE HOUSE



A very attractive variety with beautiful prolific pink blossoms in Springtime; foliage has a slight purple vein; and the fruit in autumn is deep crimson with crimson coloured flesh.

Excellent for jams and jellies, but also large enough for tarts.

A variety found growing at Belvedere House, Mullingar, Co. Westmeath. Its true identity is yet to be established. But it has attracted much attention from visitors to our research orchard, both at flowering time and again when in fruit.

Flowering: Early Season
Picking: Mid (September)

CAVAN STRAWBERRY



Very attractive large apple. Delightful to see the crop on the tree. So-called because of their strawberry colour.

Large apples are ideal for tarts and baking. Best used fresh from the tree as they do not keep.

As the name suggests the cultivar is traditional to Co. Cavan and is said to resemble a strawberry in appearance.

Flowering: Early Season
Picking: Mid (September)

CAVAN WINE



An attractive fragrant apple. Blushes a delicate pink on the sunny side. Useful for baking and tarts, needing little added sugar.

Discovered on a farm near Milltown, Co. Cavan in the 1990s.

Flowering: Mid Season, Triploid:
(Requires 2 pollenizers)
Picking: Mid (September)

DOCKNEY



Reliably produces a good crop of large fruit each year. Stores until November.

Has a complex aroma and astringency which could give good flavour to a cider.

Tree is easy to prune and maintain. Scab resistant.

Traditional to Northern Ireland.

Flowering: Late Season
Picking: Mid (September)
Stores: October

ECKLINVILLE SEEDLING (AKA GLORY OF THE WEST)



Considered the best baking apple in the ISSA collection. Stores until November.

Very productive and reliable cropper.

Makes a well-shaped tree, easy to prune and maintain. Good resistance to scab.

Discovered at Ecklinville, Portaferry, near Belfast circa 1820.

Flowering: Mid Season
Picking: Mid (September)
Stores: October

GLENSTAL COOKER
(AKA DEWDNEY'S SEEDLING)



Very large and useful cooking apple.

Bears abundantly with good disease resistance.

Raised in Lincolnshire about 1850 by a Mr. Dewdney.

Grown in the orchards of Glenstal Abbey, Murroe, Co. Limerick. This variety made a great contribution towards the self-sufficient food production of the abbey and school, hence the local name.

Flowering: Late Season
Picking: Mid (September)

KESWICK CODLIN



Large juicy apple – useful for juicing and baking.

A very healthy and impressively productive tree. Disease resistant.

An old but ever-popular early-season English cooking apple. First recorded in 1793 in Lancashire, England. Became popular and widely planted in Ireland in the 19th and 20th centuries.

Flowering: Unknown
Picking: Mid (September)

LEITRIM RED
(AKA RED VICTORIA)



Beautiful early cooking apple. Its deep red colour looks fantastic in the tree in August.

Discovered in 1884 in Cambridgeshire, UK. Found growing productively in Co. Leitrim in the 1990s and was thought to be a rare Irish variety before DNA testing revealed its true origins.

Flowering: Early Season
Picking: Early (Aug/Sept)
Ripe: Aug / Sept

O'GORMAN



An impressively healthy and productive stewing apple – cooks to a fine purée.

Found growing in the garden of an old cottage in Feakle, Co. Clare. The cottage is approximately 300 years old and was the home of an O'Brien family.

The original tree has fallen over on its side, but continues to bear a large crop each year for the current owners' the O'Gorman's who brought it to the attention of ISSA.

Recently DNA tested; the variety is considered unique and part of the Irish heritage apple collection.

Flowering: Late Season
Picking: Late (August)

PILTOWN EARLY RED



A crunchy firm apple with good flavour for baking.

Requires a good sunny location for best results.

Traditionally grown at Piltown Co. Kilkenny, hence the name; also found growing in Co. Kerry.

Flowering: Mid Season
Picking: Early (August)
Stores: Does not keep

SUMMER STIBBERT (AKA FINNERTY, CAVAN NEWINGTON)



Tangy and juicy apple. Useful both for baking and as an eater for those who love a sharp taste. Good juicer.

This variety was collected by ISSA in the 1990s as Finnerty and separately as Cavan Newington. Recent DNA results have confirmed its true origins.

Stibbert was first recorded in 1831 as originating in the West of England.

Flowering: Mid Season, Triploid:
(Requires 2 pollenizers)
Picking: Early (Aug/Sept)

DESSERT APPLES

Varieties suitable for fresh eating;
Either when picked directly from the
tree or after a ripening period in
storage.

ALLINGTON PIPPIN



An aromatic eating apple which stores very well. Very reliable cropper – easy to prune. Once a commercial eating apple.

A popular variety originating from the UK – raised by Thomas Laxton in the late 1800s. Won an RHS award in 1894.

Commonly grown and appreciated in Ireland as suitable for our growing conditions.

Flowering: Mid season
Picking: Late (October)
Ripe: November - December

APPLETOWN WONDER



Very large impressive eating apple of really good flavour. Can reach giant sizes – some as big as a melon.

Two students of Dromcollogher College discovered the variety growing at Appletown, Co. Limerick in the 1990s.

Flowering: Late Season
Picking: Early (August)
Ripe: August

ARD CAIRN RUSSET



Golden russeted fruit, ripe in September. Unique flavour and texture, sometimes compared to a banana. Very popular with gardeners looking for a different taste to add to their collection.

Found in a garden in the south of Ireland in 1890 by Baylor Hartland of Ard Cairn nursery, Co. Cork. Received an RHS Award of Merit in 1910.

Flowering: Late Season
Picking: Mid (September)
Ripe: September

BALLINORA PIPPIN (AKA MONARCH)



Juicy and crunchy with good flavour.

Reliable cropper with good disease resistance. Ripens in storage and may keep until January.

Grown on a farm in Carrigrohane, Co. Cork as far back as 1892, and suited the region so well that it earned the new local name of Ballinora.

Received an RHS Award of Merit in 1898.

Flowering: Mid Season
Picking: Mid (September)
Ripe: November – January

BARDSEY APPLE



Beautiful orange red apple. Juicy and flavoursome. Very popular on our tasting tours

Considered to be of good disease resistance. Productive and reliable.

Discovered growing on Bardsey island off the coast of North Wales, just off the Llyn Peninsula of Cardigan Bay.

More info: www.bardseyapple.co.uk

Flowering: Early
Picking: September
Ripe: September.

BEAUTY OF BALLINTAYLOR
(AKA BRIDSTOW WASP)



A real 'Beauty' – contrasting rich yellow and red. Good flavour. Best used fresh from the tree.

Makes a vigorous spreading tree – very productive and reliable. Good disease resistance.

Originally from Wales, the variety became popular in South Tipperary and Waterford.

Flowering: Mid Season
Picking: Early (August)

BEAUTY OF BATH
(AKA PADDY OF TONEY)



Fruits are one of the first to ripen in August. Juicy, sweet and a tangy, with good flavour. Its soft flesh has a distinctive pink staining.

Originated in the 19th century at Bath, Somerset, England. It was once the most important early commercial apple in the UK. It was, and still is, a popular and well proven variety in Ireland.

Flowering: Early Season
Picking: Early (August)
Ripe: August

BRADY



Sweet & juicy. A very impressive cropping apple which has attracted much attention from visitors to ISSA orchards.

Forms a spreading tree – easy to prune. Good disease resistance and suitability to the West of Ireland.

Discovered in Co. Roscommon.

Flowering: Late
Picking: Sept
Ripe: Sept - Oct

BROWN CROFTON



Juicy and crunchy bite-sized apple with russeted skin. Sweetens in storage and keeps until December.

Grown traditionally throughout Ireland since 1835. One of the 'Crofton' varieties associated with Co. Sligo.

Flowering: Late Season
Picking: Late (Sept/Oct)
Ripe: October - December

BUTTERMILK RUSSET



Crisp eating apple with an attractive and distinctive russet effect – like a 'net' or 'lace' wrapped around the fruit.

Traditionally grown in counties Armagh, Fermanagh, Monaghan and Longford.

Flowering: Late Season
Picking: Mid (September)
Ripe: September

BUTTERMILK RUSSET (B)



Tangy and juicy sweet flavour with attractive colouring.

Traditionally grown in counties Monaghan, Armagh and Fermanagh.

ISSA are continuing to research this variety as there are two distinct varieties with the same name. This one more closely matches Dr. Lamb's (1951) description.

Flowering: Early Season
Picking: Aug-Sept
Ripe: Late Aug – Early Sept

CABBAGE STALK



Delicious flavour fruit. Juicy with soft flesh – a nice tasty treat for children.

We surmise that its name could allude to its unusual growth habit – thick young shoots are often bare of leaves except for a leafy cluster near the top – similar to a cabbage plant.

Traditional to Co. Cavan. We have met several Cavan people who have very fond childhood memories of this tasty rare apple variety.

Flowering: Mid Season
Picking: Early (Aug/Sept)

CAVAN SUGARCANE



Large juicy and crunchy apple. Very popular flavour. Taste-test winner.

Reliable cropper. Vigorous tree with good scab resistance.

Discovered in the Milltown area of Co. Cavan in the 1990s.

Flowering: Mid Season
Picking: Mid (September)
Ripe: September

CUSTARD SCARLET



A beautiful addition to the ISSA collection, this variety is still under research. Therefore we cannot make many claims as to its characteristics, so it is recommended as a curiosity purchase – feedback welcome!

Thought to originate from Co. Clare. Research ongoing.

Flowering: Late Season
Picking: Late (October)
Ripe: October - November

DAVY APPLE



Popular old-time flavoured eating apple

Fruit can be quite varied in shape and colouring. One tree provides a selection of fruit!

Found growing in many old orchards in Co. Monaghan.

Flowering: Late Season
Picking: Mid (September)
Ripe: September

DICK DAVIES



Popular early eating apple. Soft white flesh with tangy flavour.

Very productive and reliable tree. Easy to maintain and prune.

Originally grown by Mrs. Rawley on her farm in Co. Cork in the early 1900s.

Flowering: Late Season
Picking: Early / Mid (September)
Ripe: September

DEVONSHIRE QUARRENDEN (AKA BLOOD OF THE BOYNE)



Vibrant crimson coloured fruit. Small but tasty - sometimes with pink flesh and a hint of strawberry flavour.

Originating in the UK in the 17th century, or before. Traditionally grown in the Boyne region of Ireland.

Flowering: Mid
Picking: September
Ripe: September.

**EIGHT SQUARE
(AKA KILL APPLE)**



Tasty bite-sized eating apple, a children's favourite. Fruit have a very distinctive octagon shape.

Tree is very productive and healthy with good disease resistance. Easy to prune and maintain.

Traditionally grown in Co. Monaghan.

Flowering: Late Season
Picking: Mid (September)
Ripe: September

FARRELL



Attractive early eating apple with a dry flavour.

Tip-bearing tree is very healthy with good disease resistance.

Requires very little pruning: Initially shape the tree with structure starting higher than normal, to allow for the weeping and spreading effect later.

Traditionally grown in Co. Kilkenny and Waterford.

Flowering: Mid Season
Picking: Early (Late August)
Ripe: September - October

**GEORGE
(AKA JOYBELLS)**



Attractive tasty eating apple. George is large, juicy and crunchy.

A healthy and productive tree. Easy to prune and maintain.

Collected by ISSA in the 1990s. Recent DNA analysis reveals it to be an English variety called Joybells, which originated in Surrey at the start of the 20th Century.

Flowering: Mid Season
Picking: Mid (September)
Ripe: September - October

GLADSTONE
(AKA JACKSON'S SEEDLING)



Fragrant and sweet. Like many early apple varieties Gladstone has a very short season – best eaten from the tree.

An old English summer apple with a long history of planting in Ireland. A reliable early cropper.

Thought to have originated in about 1780. It was renamed Mr Gladstone after receiving a First Class Certificate from the RHS in 1883.

Flowering: Mid Season
Picking: Early (Early August)
Ripe: August

GOLDEN ROYAL
(AKA HONEYCOMBE)



Juicy apple best eaten freshly picked from the tree. Large yellow fruit, sometimes with beautiful crimson fleck.

Grown on family farms in Co. Cavan and Co. Leitrim. A good cropping tree, easy to shape and with good disease resistance.

Flowering: Late Season
Picking: Early (Aug / Sept)
Ripe: September

GREEN CHISEL



Large green crunchy apple. White juicy flesh.

Very healthy and vigorous tree. Fruit are very clean and scab resistant.

An old apple variety well known in North West Tyrone and Donegal.

Flowering: Late Season
Picking: Mid (September)
Ripe: September - October

HERBERT RUSSET
(AKA IMPERIALE)



A beautiful golden russeted fruit. Develops an aromatic flavour in storage; can be delicious fresh from the tree in a sunny autumn.

An excellent choice for late storing fruit – a great one for the Christmas fruit bowl.

The origins of this variety are still under research by ISSA. Discovered in Co. Limerick, the name Herbert is the surname of the person who brought the apple to our attention.

Flowering: Early Season
Picking: October
Ripe: October - February

HONEY BALL



Very large fruit with great colour. A model fruit-bowl apple. A mild, dry flavoured apple. Ideal for drying to make apple-rings.

Very productive and healthy tree. Grows into a nice shape, easy to prune and maintain.

Frequently grown in the commercial orchards of Co. Kilkenny in the early 20th century.

Flowering: Mid Season
Picking: Mid (September)
Ripe: September

IRISH MOLLY



Beautiful and distinctive flavour. Very tasty eating apple – favourite of many.

Achieves best flavour in a sunny location. Tree shapes well and is easy to prune.

Originally grown by Mrs. Rawley on her farm in Co. Cork in the early 1900s

Flowering: Mid Season
Picking: Mid (September)
Ripe: September

IRISH PEACH
(AKA EARLY CROFTON)



The earliest to ripen of the Irish varieties. A juicy and tangy bite.

Tip-bearing tree often chosen for its ornamental appeal when flowering. Brightly coloured fruit are nicely displayed in a weeping fashion.

Minimum pruning required – initially shape the tree with structure starting higher than normal, to allow for the weeping and spreading effect later.

Thought to have originated in Co. Sligo as part of the ‘Crofton’ collection.

Flowering: Early Season
Picking: Early (August)

IRISH PITCHER



Crunchy and juicy bite. Traditional taste of fruit grown in the West of Ireland.

One of the ‘Pitcher’ apples associated with counties Sligo and Mayo.

Flowering: Late Season
Picking: Late (Sept / Oct)
Ripe: October

JAMES' BEAUTY



Sweet and juicy taste. Like all early fruit, this apple tastes delicious when picked directly from the tree; does not keep in storage.

A very productive tree with good disease resistance.

Named after James Monaghan, a dowsler from Kilreekil, Co. Galway.

Its origins are still under research by ISSA. But DNA testing has shown it to be unique has become part of the heritage Irish apple collection.

Flowering: Early Season
Picking: Early (August)
Ripe: Late Aug – Early Sept

KEEGAN'S



A juicy and crisp apple. A favourite of those who seek a crunchy bite. Large green fruit with net-russeting.

Originated in Loughgall, Co. Armagh. It was very common in the area in the mid 20th century when it was grown commercially, and was even exported to Scotland.

Flowering: Late Season
Picking: Mid (September)
Ripe: October - February

KEMP (AKA MAY BLOOM)



Very popular flavour, sweet eating apple. Medium sized with attractive colouring.

Performs best in a good sunny location. Fruit are scab resistant. Reliable cropping tree.

First popular in Derry in the early 1800s. Later became a significant commercial crop in the Armagh area.

Flowering: Late Season
Picking: Mid (September)
Ripe: October

KERRY PIPPIN



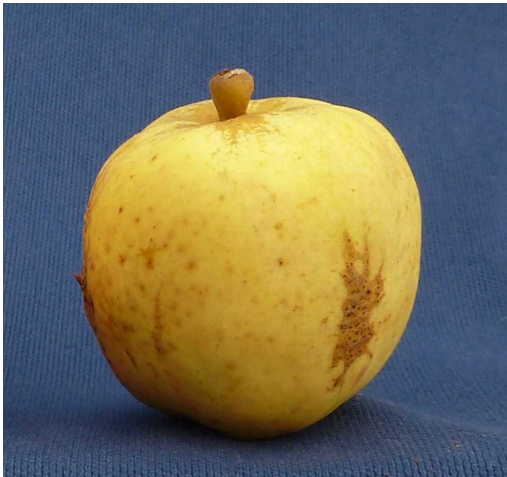
Loved by children - a small apple with a delicious taste. Flesh is slightly 'peach' coloured.

Healthy tree, easy to shape.

Widely grown in Ireland since the 1800s, particularly in walled gardens and estates.

Flowering: Early Season
Picking: Mid (September)
Ripe: September

KILTOGHERT BLOSSOM



The most delicious ugly apple in Ireland!

Random patches of russet around the surface of this apple may turn some people away and ensure it will never be a commercial success. But a blind-fold taste test ranks it among the very tastiest!

Recommended for those who can see past superficial blemishes!

Found growing on a small farm in Co. Leitrim.

Flowering: Mid Season
Picking: Mid (Aug - Sept)
Ripe: September - October

LADY SUDELEY



Large juicy early season apple. Unusually for an early apple, the fruit can store for over a week in the fridge.

A well-known and attractive English apple from the late Victorian era. Once grown commercially. Proven to do well in the Irish climate.

Flowering: Late Season
Picking: Early (Aug / Sept)
Ripe: September

LADY'S FINGER



Large and colourful with a mild flavour. An attractive apple, looks well on the tree. Good for juicing.

'Lady's Finger' is a name commonly applied to any long shaped apple. Other varieties in the British Isles share this name.

Traditional to Offaly & Monaghan.

Flowering: Mid Season, Triploid:
(Requires 2 pollenizers)
Picking: Mid (September)
RIPE: OCTOBER - DECEMBER

LOUGH TREE



A juicy crisp bite. Red fruits look very decorative against the green foliage in Autumn.

Proven to be a very reliable and heavy cropping tree with good disease resistance.

First found growing in an orchard near a small 'lough' in Co. Wexford.

Flowering: Mid Season
Picking: Mid (September)
Ripe: September - October

MILLER'S SEEDLING



A small early-season apple. Considered to have an excellent taste.

Crops heavily, partially self-fertile.

Popular English variety in late Victorian times.

Flowering: Mid Season
Picking: Early (Aug/Sept)

MINOGUE WHITE MOSSY



A delicious fresh and juicy apple. Very popular winner of taste tests.

Heavy cropping tree. Easy to spread and shape. Good general disease resistance.

Discovered in Co. Clare but still under research at ISSA. Much in demand when visitors taste it fresh from the tree.

Flowering: Mid Season
Picking: Mid (September)
Ripe: September

MRS. PERRY



A star of the Heritage Irish catalogue, this variety is popular among all visitors to ISSA who admire its generous crop.

Large, juicy and tasty fruit. Best eaten fresh from the tree. A good choice for juicing as they do not keep in storage.

Very productive tree with strong resistance to scab.

Collected in Donegal in the early 1990s by ISSA supporter Tony Murray.

Flowering: Mid Season
Picking: Mid (September)

NEW PARK



A juicy refreshing bite – this apple has become quite popular at our tasting events.

ISSA are continuing to research the origins of this variety, but its refreshing taste ensures its popularity.

Flowering: Mid Season
Picking: Late Aug – Early Sep
Ripe : September

PÊCHE MELBA (AKA PEACH MELBA)



Large fragrant eating apple with ‘peach’ coloured flesh. In early summer it has an attractive downy peach-like surface which may also have contributed to its name.

A vigorous and healthy tree with good disease resistance.

Originally from Kilkenny circa 1930.

Flowering: Mid Season
Picking: Mid (September)
Ripe: September

PUFFIN
(AKA BEAR AND TEAR)



Sweet, crisp and juicy with good flavour.

Forms a compact productive tree with good fruit crops.

Originated in Somerset, England.

Flowering: Mid Season
Picking: Mid (September)

RAWLEY'S SEEDLING



Delicious eaten fresh from the tree. Susceptible to scab, but its excellent flavour ensures its popularity.

Requires a good site and sunny location for best taste and health.

Originally grown by Mrs. Rawley on her farm in Co. Cork in the early 1900s.

Flowering: Mid Season
Picking: Mid (September)
Ripe: September

RED BRANDY



Tasty bite-sized treat. Popular flavour.

Requires good sun for best flavour. Tree is easy to prune and maintain. Fruit are scab resistant.

Traditionally grown in orchards of Co. Kilkenny.

Flowering: Late Season
Picking: Mid (September)
Ripe: November - December

REID'S SEEDLING



Large and juicy eating apple. An attractive and tasty addition to any fruit-bowl.

Discovered by a Mr. Reid in Rachill, Co. Armagh circa 1885.

Flowering: Late Season
Picking: Mid (September)
Ripe: October - November

RICHARDSON (AKA HISTON FAVOURITE)



Delicious tasting apple – a favourite of many. Juicy and crunchy.

Requires a sunny location for sweetest and tastiest results.

Recorded at Histon, Cambridgeshire, England in 1883 and became popular in the area. Grown in Kilkenny since the turn of the 20th century.

Flowering: Late Season
Picking: Mid (September)
Ripe: September - October

ROSE HOGAN SEEDLING



Beautiful and tasty early apple. A popular variety with visitors to ISSA's research orchard.

We know little about the origins of this variety but its excellent flavour ensures it has a bright future!

Flowering: Early
Picking: Early (Aug)
Ripe: August

ROSS NONPAREIL



A tasty winter treat. The apples hang on the tree after the leaves have fallen off. Very decorative.

Silver russet against deep red blush makes for a great fruit-bowl apple in frosty winter months.

Dating from 1786, this apple became popular throughout Ireland and overseas.

Flowering: Early Season
Picking: Late (October)
Ripe: November - January

SAM YOUNG (IRISH RUSSET)



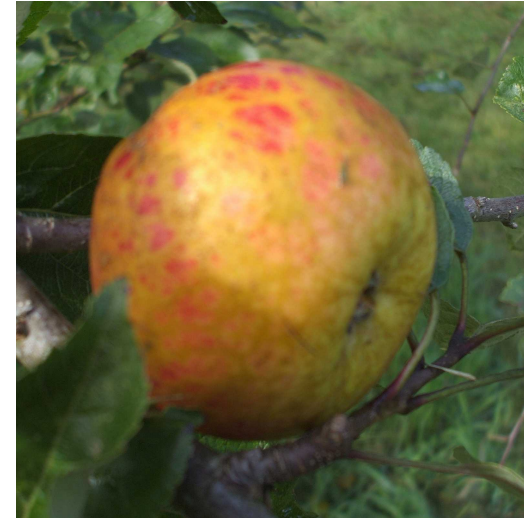
Delicious little apple, very popular flavour. Produces abundant clusters of small tasty apples which can store for several months.

Requires a sunny location for best results – can suffer some cracking due to susceptibility to scab. Thin fruit in order to achieve larger sizes.

Grown widely in Ireland in the 19th century. Especially associated with counties Kilkenny, Offaly and Cavan.

Flowering: Early Season
Picking: Mid (September)
Ripe: November - February

SCARLET CROFTON



An attractive russeted apple with a beautiful scarlet blush. Fresh aromatic flavour.

Traditional to Ireland since at least the early 1600s, this variety may have originated in England. Part of the 'Crofton' collection of apples associated with Co. Sligo.

Flowering: Late Season
Picking: Mid (Aug / Sept)
Ripe: September - November

STRIPPY



Attractive red coloured fruit make a very striking ornamental addition to the garden in early autumn.

Tangy and juicy taste – with distinctive pink-tinged flesh.

Traditional to Co. Armagh.

Flowering: Mid Season
Picking: Mid (September)
Ripe: September - October

SUMMER JOHN



Crunchy and juicy apple of good flavour. Flat and russeted with white flesh.

Requires a sunny location for best flavour. Resistant to scab.

Traditional to Co. Fermanagh

Flowering: Mid Season
Picking: Early (August)
Ripe: August

THOMPSON'S APPLE



Beautiful coloured apple. Juicy and crunchy. Looks great in a fruit basket.

Requires a sunny location for best colour and flavour.

Traditional in counties Monaghan and Tyrone since the 1800s.

Flowering: Late Season
Picking: Mid (September)
Ripe: October

TURKEY WILLOUBY



Tasty bite-sized treat. A small early apple with popular flavour. A children's favourite.

Requires a sunny location for best ripening. May require fruit thinning to increase fruit size.

Collected in Northern Ireland.

Flowering: Mid Season
Picking: Early (Aug / Sept)
Ripe: September

WHITE CROFTON



Juicy crisp bite of good flavour.

Tip-bearing tree often chosen for its ornamental appeal when flowering. Brightly coloured fruit are nicely displayed in a weeping fashion.

Initially shape the tree with structure starting higher than normal, to allow for the weeping effect later.

Popular throughout Ireland since the 1830s. Part of the 'Crofton' collection associated with Co. Sligo.

Flowering: Mid Season
Picking: Mid (September)
Ripe: September - October

WIDOW'S FRIEND (AKA STARK'S EARLIEST)



Crisp and juicy early apple. Very attractive fruit with deep red blush on a contrasting white background.

Requires a good sunny site for best flavour and to reduce susceptibility to scab.

Traditionally grown in Co. Armagh. Also grown in Idaho, USA.

Flowering: Early Season
Picking: Early (Aug / September)

YELLOW PITCHER
(AKA EVAGIL)



Delicious sweet eating apple. Attractive apple which turns yellow as it ripens.

Tree is healthy and disease resistant. Easy to prune and maintain.

Originally from Belgium circa 1863. There is some confusion as to how it ended up in the Irish Heritage collection under the name 'Yellow Pitcher' which was associated with Co. Sligo. In any case its flavour has ensured its popularity.

Flowering: Late Season
Picking: Mid (September)
Ripe: September – October

DUAL PURPOSE

Fruit which, early in the season, may only be useful for cooking; Subsequently they mellow and sweeten to an eating quality.

APRIL QUEEN



A star of our catalogue. This apple is large and juicy. Healthy and disease resistant. Useful both for cooking and for juicing.

Tree is very productive & dependable. Easy to prune and maintain.

Thought to have originated in Armagh. Its true origins are still under research.

Flowering: Late Season
Picking: Mid (September)

BARNHILL PIPPIN



Attractive fruit considered a good cooking apple which sweetens in storage and tastes well around Christmas time.

Productive tree requires a good site to reduce susceptibility to scab.

Traditional to Armagh and Antrim.

Flowering: Mid Season
Picking: Mid (September)

UPDATED SEPTEMBER 2018

BLOODY BUTCHER
(AKA CSIKOS ORIAS HALASI)



Large and distinctive. Red & yellow colouring looks particularly decorative. Eaten fresh from the tree, it has a mild flavour. Also suitable for cooking.

Heavy crop, good disease resistance.

Associated with counties Kilkenny, Meath and Offaly in early 20th century.

Flowering: Mid Season, Triploid:
(Requires 2 pollenizers)
Picking: Mid (September)

CASTLEGREGORY



Slightly soft, juicy, good flavour. Cooks to a light well-flavoured purée.

Discovered in an old orchard in Castlegregory Co. Kerry. The orchard dates back to at least 1840 according to OS maps of that year. Origins still under research by ISSA.

Flowering: Mid Season
Picking: Mid (September)

CAVAN ROSE
(AKA NEWTON WONDER)



A very useful apple – decorative, good for tarts, requiring little sugar, and sweetens in a sunny summer to a tasty eating apple. Stores until November.

Newton Wonder received a first class certificate from the RHS on its introduction in 1887. Grown traditionally in Co. Cavan.

Flowering: Late Season
Picking: Mid (September)

CLEARHEART



Juicy and sweet, often considered to be a good-flavoured eating apple. Stores until November.

Traditional to Co. Kilkenny. So-named due to a large empty space at its 'heart'.

Flowering: Late Season
Picking: Mid (September)

COUNCILLOR



An attractive apple which is used for cooking in early September, before sweetening to become tasty and aromatic as an eating apple.

A seedling originally planted by Councillor JJ Walsh in Phibsborough, Dublin circa 1930.

Flowering: Mid Season
Picking: Mid (September)

FINOLA LEE



Great for tarts and baking. Mellows to an eating apple if it gets good sun.

A very productive and dependable tree. Easy to maintain and prune. May require fruit thinning in order to achieve larger sized fruit.

Grown on a small farm in Keale, Kilfinnane, Co. Limerick in the 1990s. Given the name of the woman, Finola Lee, who discovered the variety.

Flowering: Mid Season
Picking: Mid (September)
Ripe: Early October

FRANK'S SEEDLING



Large attractive fruit primarily used for cooking. Looks great in the fruit-bowl. Sweetens to good eating flavour after some time in storage. May keep until January.

A seedling originally planted by Frank Lamb (Father of Dr. Keith Lamb) in Clara, Co. Offaly.

Flowering: Late Season
Picking: Mid (September)

GOLDEN SPIRE



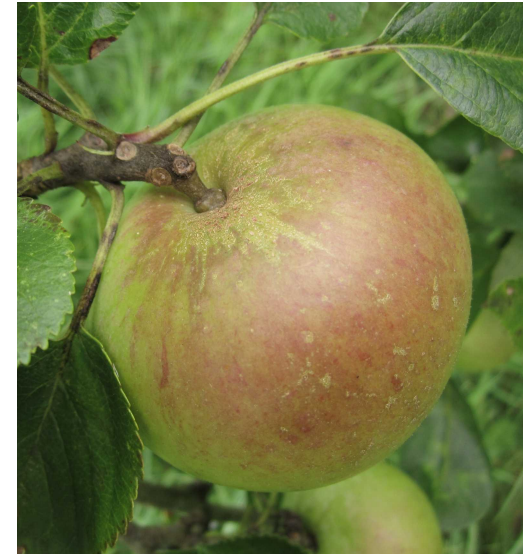
Large long fruit ideal for tarts, needing little sugar. Sweetens to a golden yellow colour at which point they are considered good as an eating apple.

A very dependable and productive tree. Easy to prune and maintain.

Discovered circa 1850 in Lancashire, UK. Became popular in Ireland due to its heavy and useful crop and good disease resistance.

Flowering: Late Season
Picking: Mid (September)

KILKENNY PEARMAIN



Very attractive looking apple considered good both as a tasty late eating apple and as a good baking apple. Stores until December.

Good productive tree that may require fruit thinning in order to achieve larger sized fruit.

First became popular in Ireland in the late 1800s before being introduced to the UK.

Flowering: Late Season
Picking: Mid (September)

LADY HENNIKER



Cooks to a well-flavoured purée, hardly needing extra sugar. Mellows in storage to a good eating quality.

Healthy, vigorous & productive tree.

Raised in the mid-1800s in Suffolk, UK, on the estate of Lady Henniker. Became popular in the Victorian and Edwardian periods on both sides of the Irish Sea.

Received an RHS first Class Certificate in 1873.

Flowering: Mid Season, Triploid
(Requires 2 pollenizers)
Picking: October
Store: January

MARTIN'S SEEDLING (AKA NO SURRENDER)



Large fruit suitable for tarts apple. Very sweet therefore requiring very little sugar in tarts and cakes.

Very clean fruit, resistant to scab.

A seedling raised by James Martin in Co. Antrim. Much recommended in the early 1900s – it had its own class in the Dublin Fruit Show of 1904.

Flowering: Mid Season
Picking: Early (August)

MOTHER OF HOUSEHOLD (AKA JÄRNÄPPLE)



Good sized baking apple with good flavour and sweet enough to need less sugar.

Mildly sweet, crisp, juicy, good flavour

Very productive and reliable to look after the household: as the name suggests!

Originated in Germany in the early 1700s.

Flowering: Mid Season
Picking: October
Store: February

SHEEP'S SNOUT (GREEN)



Mild flavoured stewing apple which mellows in storage to eating quality.

A good keeping apple. Very versatile – useful for juicing, jams and cider.

Several different varieties traditional to Ireland carry the name 'Sheep's Snout'.

The origins of this variety are still under research at ISSA.

Flowering: Mid Season
Picking: September
Ripe: Nov - Dec

SHEEP'S SNOUT (RED)



Long 'snouted' fruit, so called for its resemblance to a sheep's nose. Gives good flavour to tarts and mellows to eating standard in storage. Also good for juicing.

A very productive and dependable tree. Easy to maintain and prune. May require fruit thinning in order to achieve larger sized fruit.

Several different varieties traditional to Ireland carry the name 'Sheep's Snout'.

Flowering: Mid Season
Picking: Mid (Late September)

SHEEP'S SNOUT (YELLOW) (AKA MANZANA DE SAN FERMIN)



Sweet crisp and juicy. An early apple which is best consumed freshly picked from the tree. Does not keep.

Great for fresh eating or alternatively for juicing, jams or stews.

Several different varieties traditional to Ireland carry the name 'Sheep's Snout'.

Flowering: Early Season
Picking: Early (August)

SOVEREIGN
(AKA LASS O'GOWRIE)



Attractive early cooking apple. Sweetens quickly to become tasty eaten fresh. Best used fresh from the tree.

May require fruit thinning in order to achieve larger sized fruit.

Originated from Scotland. Traditionally grown in Co. Armagh.

Flowering: Early Season
Picking: Early (Aug/Sept)

THOMAS RIVERS
(AKA RED STRIPE)



A firm cooking apple with a hint of pear or quince flavour. Mellows to eating quality in storage.

Forms a compact tree – easy to prune.

Raised by River's Nursery in Hertfordshire, UK. Received a First Class Certificate from the RHS in 1892.

Flowering: Mid Season
Picking: September
Store: October

WHITE RUSSET
(AKA QUEEN CAROLINE)



Stews to a creamy purée. Flavour develops in storage to a tasty eating quality.

Reported to have been raised in Leicestershire c 1820 and named Queen Caroline. However, conflicting records from statistical surveys of Derry and Antrim show the variety to have been grown as early as 1802. ISSA will continue to investigate.

Flowering: Mid Season
Picking: Mid (September)
Stores: October - November

WHITE RUSSET (O'DWYER)



Impressively large apple with tangy flavour. Sometimes with an attractive pink streak in the flesh.

The origins of this variety are still under research by ISSA.

Flowering:	Mid Season
Picking:	Mid (September)
Stores:	Sept - Oct