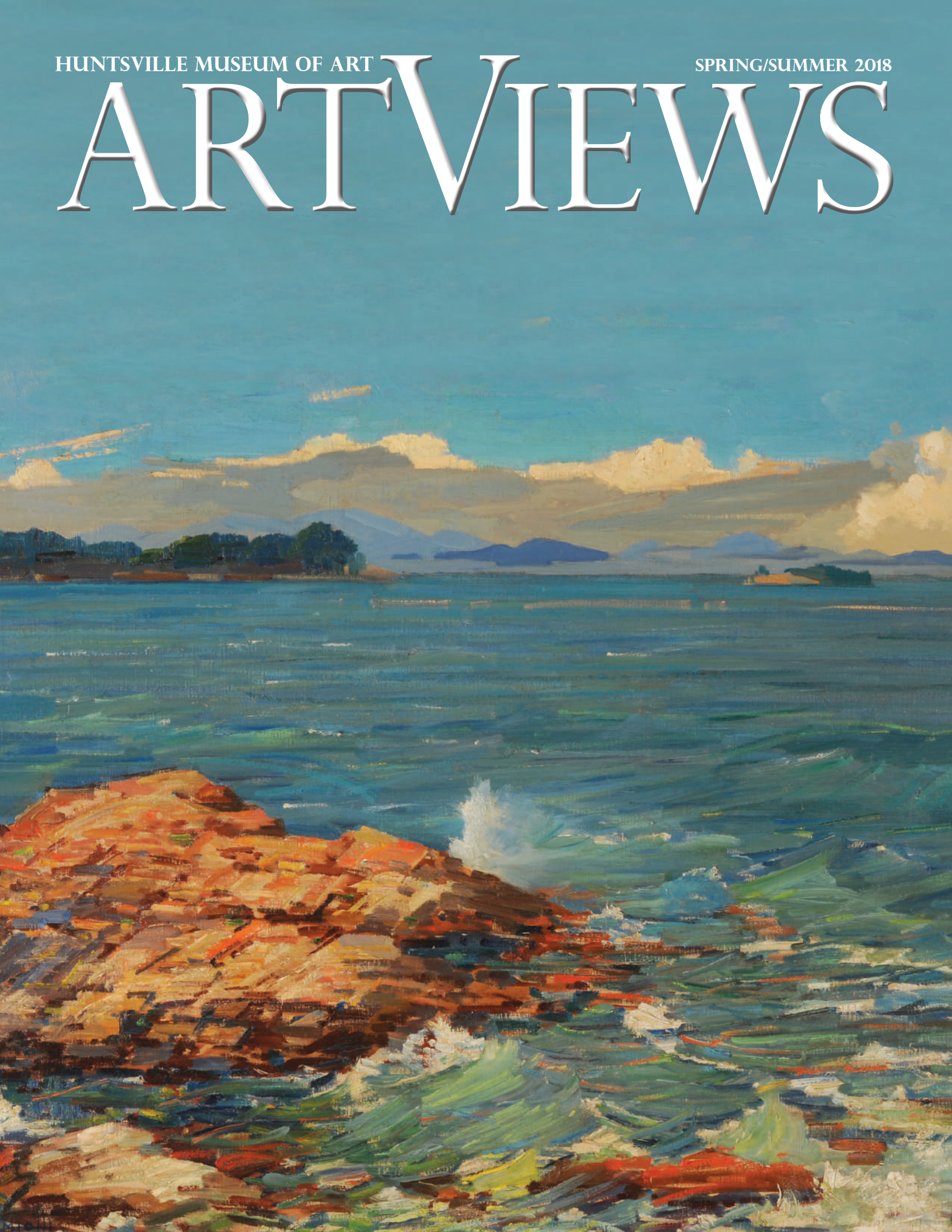


HUNTSVILLE MUSEUM OF ART

SPRING/SUMMER 2018

ART VIEWS



If you dream it,
Donny will create it.



DonnysDiamondGallery.com • 256.534.2255





Museum Board of Directors

Chairman: David Nast
Vice Chairman: Carole Jones
Secretary: Charlie Bonner
Treasurer: Richard Crunkleton
Dorothy Davidson Patsy Haws Virginia Rice
Sarah Gessler Steven Johnson Herman Stubbs
Joyce Griffin Betsy Lowe John Wynn

Ex-Officio Members

Collections: Wayne Laney
Foundation Board President: Kerry Doran
Guild President: Julie Andrzejewski
GALA Co-Chair: Leslie Evans
Docent Chair: Jennifer Wu

Foundation Board

President: Kerry Doran
Vice President: Blake Mitchell
Secretary: Wendy Johnson

Anusha Alapati Trip Ferguson Darren Malone
John Allen Patrick Fleming Todd McBride
Mark Ardin Cara Greco Kitty Roberts
Heather Baker Laurie Heard Sharon Russell
Caroline Bentley Gary Huckaby Cathy Scholl
Jane Brocato Cindy Kamelchuk Stephen Shaw
Vicki Edwards Wayne Laney Dana Town

Emeritus: Betty Grisham

Ex-Officio Members

Collections: Wayne Laney
Guild Representative: Suzanne Barnes
Museum Board: Joyce Griffin and Herman Stubbs
Skating in the Park Advisor: Parke Keith

Guild Officers

President: Julie Andrzejewski
President-elect: Carolyn Gandy
Secretary: Donna Pylant
Corresponding Secretary: Marie Newberry
Finance Chair: Ina Wilson Smith
Parliamentarian: Janet Heard
Treasurer: Jamie Saunders
Assistant Treasurer: Laurie Garcia
Staff Liaison: Michelle Driggs

Museum Docents

Docent Chair: Jennifer Wu
Co-Chair: Maggie Madrie

Museum Staff

Executive Director: Christopher J. Madkour
Executive Assistant: Michelle Driggs
Director of Curatorial Affairs: Peter J. Baldaia
Curator of Exhibitions and Collections: David Reyes
Curatorial Assistant: Katherine Purves
Director of Education/Museum Academy:
Laura E. Smith
Education Associate: Candace Bean
Museum Academy Assistant: Amy Thomas
Director of Communications: Samantha Nielsen
Director of Development: Andrea Petroff
Development Associate: Brianna Sieja
Membership/Development Operations Associate:
Anita Kimbrough
Accountant: Wendy Worley
Accounting Assistants: Tonya Alexander,
Mary Chavosky
Facility and Grounds Manager: Doug Lighton
Facility Rental Manager: Lil Parton
Facility Rental Assistants: Darlene Stanford,
James Shelton
Security Supervisor: Harold Lamberson
Security Guards: Britney Burke, John Crissone,
Marlow Fleming, Diana Harrell-Neal, John Solari,
Robert Walker, Kyra Williams
Guest Services Supervisor: Linda Nagle
Guest Services: Wendy Campbell, Victoria Gunter,
Rachel Stone
Museum Store Coordinator: Janell Zesinger
Museum Store: Maggie Jobe
Volunteers: Jerry Brown, Bob Pirtle, Beth Ryan,
Donna Sietsema, Mary Withington

Dear Museum Members,

This June marks my seventh year at the Huntsville Museum of Art. Recently, I was speaking with a long-time Museum member about how much I have enjoyed the many wonderful experiences and the interesting and gracious individuals whom I have met during these seven years.



Huntsville is unique in so many ways – it is a city that generously gives back for the betterment for all. It has a strong sense of place, a place that is proud of its heritage and is excited about where it is going. It is very reassuring to know that the HSV City Council, Mayor and people of influence, recognize the

important and vital contribution the arts play in the economic and intellectual health of a city. With their voice and support, others follow. They lead by example, along with the business community.

With such support, this has been an unprecedented year for the Museum with its many sold-out events and record attendance at our exhibitions, special events and classes. From our exhibition openings and fundraisers to education programs and special events, it has been an extraordinary year thus far, highlighted by the acquisition and unveiling of Luigi Lucioni’s stunning *Portrait of Ethel Waters*. This addition to the Permanent Collection was made possible by the generous support of our members and the community.



Guests enjoying the reception at the opening of *Painting a Nation: Hudson River School Landscapes from the Higdon Collection*.

Our 2018 fiscal year began in October with the sold-out *Voices of Our Times* evening with John Dean, followed a week later by another well attended event, the preview party for *Norman Rockwell: Behind the Camera*. Mother Nature gave us weeks of rainless November and December days and evenings, albeit a bit chilly, which led to record attendance for *Skating in the Park* over the holiday period.

In January, Museum members and individuals from the community heard General Michael P.C. Carns speak on cyber warfare, and Carolyne Roehm shared *The Art of the Garden*, both events part of our popular *Voices of Our Times* series. And let’s not forget the resounding success from our week-long



Guests enjoying the Youth Art Month opening.

GALA Celebration! At times, we forget that each fundraising event, workshop and art opening takes teams of individuals to contribute to our successes. These teams are my devoted staff, who have championed my artistic and programming direction for the Museum with a high level of professionalism, the dedicated Board of Trustees, who have been the most amazing group of loyal individuals

I have ever had the pleasure to work with, and finally, to you, our members, who are the pulse of the Museum’s mission. To all, thank you, for these wonderfully productive seven years. I look forward to many more successes in my years ahead at the Museum.

Christopher J. Madkour
Executive Director

On the cover: Gustave Cimiotti (American, 1875-1969), *Coastal Scene*, (detail), undated, oil on canvas, 25 x 30 in.



Alan Shuptrine: The Serpentine Chain
May 13-August 5, 2018

Bed of White, 2015, watercolor, 20 x 16 in. Collection of Dr. and Mrs. J. Stephen Rich.

A. Shuptrine

The Serpentine Chain presents 44 watercolor paintings by renowned Tennessee artist, Alan Shuptrine, which celebrates the land and people along the Appalachian Trail and the distinctive culture that endures from the mountains of Maine to Georgia. This thematic body of work highlights the connections of Appalachia with its historical and cultural counterpart in the British Isles, focusing on Celtic traditions that were brought to America in the 18th century and are still practiced in the region today.

During his thirty-year career, Shuptrine has emerged as an award-winning practitioner of the medium of realistic drybrush watercolor. Born in Chattanooga and raised in more than twenty cities, his desire to pursue an art career stemmed from a natural talent, as well as the influence of his late father, Hubert Shuptrine, a nationally acclaimed watercolorist. Like his father, he prefers working on highly detailed and dramatic landscapes and figurative paintings, and cites Andrew Wyeth, Winslow Homer and John Singer Sargent among his major artistic influences.

Shuptrine is equally known for his beautifully designed and hand-carved frames, which are often finished via the centuries-old art of water gilding with genuine gold leaf. All of the paintings in *The Serpentine Chain* are ornamented with Shuptrine's hand-carved frames, many of which are embedded with serpentine, a mineral found not only along the entire Appalachian Trail, but also in the regions of the British Isles where the original Appalachian settlers were born.

"What has fascinated me about this project is the irony of serpentine," Shuptrine observes. "The 18th century British settlers moved westward into the mountains because the rugged terrain looked like home. Little did they know, they were moving back into the same mountains and the very same vein of serpentine they had left an ocean away. Today, we know that Britain was once connected to the Eastern Seaboard millions of years ago, and as the Atlantic Ocean was formed the Appalachian Mountains were severed. Consequently, there is a matchbook vein of the same serpentine in the British Isles. So, when the British settlers moved into our Appalachians, they were actually coming home to the very same place."

Shuptrine's work is held in many public and private collections, and the artist has won numerous regional and national awards. He is an active member of the Society of Gilders, The Salmagundi Club, The Tennessee Watercolor Society, The Southern Watercolor Society, The American Watercolor Society, The National Watercolor Society, and is the founder of The Master Craftsmens' Society.



Beloved, 2016, watercolor, 48 x 60 in. Collection of the artist.



Autumn Glow, 2015, watercolor, 20 x 26 in. Collection of Russ and Darragh Bailey.

Opening Party: Alan Shuptrine: *The Serpentine Chain*

Foothills to Fine Art:

Bluegrass, Boots & Appalachian Roots

Presented by the Huntsville Museum of Art Guild

Thursday, May 10 6:30 to 9:30 p.m.

Live Music by the Wilson Banjo Co.

Whiskey and Moonshine Tasting Silent and Live Auctions

Regional Cuisine from Georgia to Maine

Tickets available at hsvmuseum.org

Unexpected Beauty:

The Huntsville Photographic Society 2018 Members' Showcase

May 20-August 5, 2018



Tim Solomon, *Sunrise Glory*, 2017, archival digital print.

A juried selection of 47 photographs by the highly talented members of the Huntsville Photographic Society (HPS) will open on Sunday, May 20 in the Guild Gallery. This annual exhibition includes both color and black and white photography in a range of styles, and will remain on view through Sunday, August 5, 2018. Each year, the exhibition is juried around a common theme. This year's theme is "Unexpected Beauty."

The Huntsville Photographic Society is an organization dedicated to promoting the art and science of photography in Huntsville and the surrounding area through informative programs, member contests and special events.

The HPS Members' Showcase is an annual exhibition jointly organized by the Huntsville Photographic Society and the Huntsville Museum of Art.

Preview Reception in Honor of HPS Photographers

Thursday, May 17 5:30-7 p.m.

Members: Free Non-members: Included with general admission

Hosted by the Huntsville Photographic Society and the Huntsville Museum of Art.

Looking at the Collection: Nature's Realm

August 19-November 11, 2018

The Huntsville Museum of Art is pleased to showcase a selection of artworks from its own permanent collection that explores aspects of the natural world we all inhabit. Some works are gifts from generous donors, while others were added through purchase. The Museum's collection currently totals over 3,500 works of art, providing a rich resource for its curators to develop exhibitions such as this.

Nature's Realm focuses on contemporary works of art from the collection whose subjects reference the landscape and its flora and fauna. The exhibition highlights a range of artistic "takes" on the theme, offering the viewer the opportunity to compare and contrast differing approaches to composition, subject matter and storytelling. On view are paintings, drawings, prints, photographs, and three-dimensional works in glass, metal, wood and ceramic. Works range stylistically from the hard-edged realism of Nall Hollis' deconstructed flowers to the softly color-drenched landscapes of George Cress to the sheer abstraction of Pat Musick's mixed-media sculptures.

With this exhibition, we salute the depth and diversity of the Museum's permanent collection, and thank those artists whose works have enriched the cultural life of our region.

Gallery Walk with Peter Baldaia, Director of Curatorial Affairs

Sunday, August 19 2-4 p.m.

Members: Free

Non-members: Included with general admission



Richard Painter (b. 1954, Gainsboro, TN), *Becoming*, 2006, pastel on charred wood panel, 49 x 45 in. Gift of artist.

Encounters: Ted Whisenhunt

July 15-September 23, 2018

The latest exhibition in this long-standing showcase for outstanding regional contemporary art focuses on the engaging folk-infused works of Ted Whisenhunt. An Alabama native currently living and working in the mountains of North Georgia, Whisenhunt creates sculpture and mixed media paintings inspired by a nostalgic look back at the rich culture of rural Appalachia. Many of the artist's pieces have kinetic elements that add a touch of whimsy and invite viewer interaction to help bring them to life.

Whisenhunt recently described the inspiration for his art: "The hard scabbled lives of the people of the Appalachian region during the 1920s and '30s continues to be a theme in my work, stemming from my interest in the old-time string band music of that era. The 'make shift' mechanical elements of my sculptures are inspired by the attitude of this era, when people made their own tools and created sawmills and grist mills with what they had available to them."

Born in Birmingham, Alabama, Whisenhunt graduated with a Bachelor of Fine Arts Degree from Birmingham-Southern College. He subsequently studied ornamental iron, blacksmithing, and metal fabrication techniques under noted Birmingham artisan Robert Lehman. Whisenhunt went on to earn a Master of Fine Arts Degree from Florida State University, and to study traditional Italian oil painting at the University of Lorenzo de Medici in Florence, Italy.

His professional teaching career includes chairing the Art Department at Judson College in Marion, Alabama, for eleven years prior to arriving at Young Harris College in Young Harris, Georgia, in 2009. He is currently Chair of the Art Department and Associate Professor of Art at Young Harris College, and enjoys teaching courses in drawing, painting, and sculpture. In his spare time, Whisenhunt plays with the old-time string band Cornbread & The Butterbeans.

Gallery Walk & Reception with Ted Whisenhunt

Sunday, July 15 2-4 p.m.

Members: Free

Non-members:

Included with general admission



Jar Fly, 2018, mixed media on found wood panel, 75 x 32 in. Collection of the artist.



Cultivated, 2015, mixed media, 72 x 36 x 96 in. Collection of the Huntsville Museum of Art.

American Impressionist Art from the Thomas Clark Collection

July 29-September 23, 2018



Joseph Frey (1892-1977), *Sierra Scene*, (detail), undated, oil on canvas, 30 x 36 in.

One of the finest private holdings of its kind in upstate New York, the Thomas Clark Collection is a testament to the enduring legacy of Impressionist painting in American art. The Thomas Clark Collection emphasizes representative examples from the last great generation of artists who emerged both during and in the aftermath of the American Impressionist movement (1880-1920). These artists were the students and sketching partners of the seminal figures in the development of Impressionism in America, such as William Merritt Chase, Willard L. Metcalf, John Henry Twachtman and Robert Henri.

The American Impressionists were primarily concerned with

capturing the effects of light, color and atmosphere achieved by painting directly from nature – out-of-doors – rather than in the studio. This generation of landscape painters flourished in areas such as Old Lyme, Connecticut; Cape Ann, Massachusetts; New Hope, Pennsylvania; and Woodstock, New York; as well as parts of Vermont and California.

American Impressionist Art from the Thomas Clark Collection includes approximately 50 landscapes in all seasons, hand-selected by the Huntsville Museum of Art. Among the featured artists are Gustave Cimiotti, John Enneking, Aldro Hibbard and Alfred Maurer.



Carl Sammons (1883-1968), *Monterrey Cove, California*, undated, oil on canvas on artist's board, 11.75 x 16 in.



Walter Emerson Baum (1884-1956), *Bucks County Landscape*, (detail), 1933, oil on canvas on artist's board, 16 x 20 in.

Please join us for a Lecture and Preview Reception with collector Thomas Clark

Saturday, July 28, 2018 | Lecture: 5:30-6 p.m. | Reception: 6-7:30 p.m.

Members: Free Non-members: \$25

Docent Association Art Portfolio Project for the Children's Community Gallery

The Museum Docents are sponsoring a new initiative – the Docent Association Art Portfolio Project. This new program will provide art portfolios to area school art teachers who participate in the Children's Community Gallery (CCG) throughout the year.

Candace Bean, Education Associate, developed the idea for this new Docent Association Art Portfolio Project and proposed it to the Docents.

"The idea for the Portfolio Project originated from my work with processing incoming artwork for the Children's Community Gallery," Candace remarked. "Often, artwork is delivered to me in handmade carriers or bags which offer diminished protection and support. During transport, artwork may



Huntsville Museum of Art

sometimes face potential damage, exposure to the elements or can fall out and be lost. Fortunately, no works have ever been received damaged, however that possibility is concerning.

Through the Portfolio Project, we also want students and teachers to know how much their artwork is valued by HMA. We cherish each piece



Laura Smith, Maggie Madrie, Candace Bean and Jennifer Wu showing the new portfolios in the Children's Community Gallery.

of work that enters our doors and treat it with as much respect as we do with any exhibit on display. The funds we raise will enable HMA to provide art teachers with new portfolios to transport artworks safely and professionally."

The Docents are major assets to the Museum. They continuously provide support in furthering its mission. To learn more about the Docents, visit hsvmuseum.org.

A salute to an outstanding patron, Sarah Gessler.

We will continue profiling Museum members who have made significant contributions to the growth and success of the Huntsville Museum of Art in future editions of ArtViews.

For over 25 years, Sarah Gessler has been diligently involved with the continued growth and success of the Huntsville Museum of Art (HMA). Through her financial support, volunteerism, and personal insight into the guidance and direction of the Museum, Sarah's extensive museum background has proved to be an invaluable resource.

While studying at the University of Arkansas in the School of Nursing in 1976, Sarah met her future husband, Carl Gessler, Jr. The Gessler's married in 1979 and after Carl was accepted into the Mayo Graduate School of Medicine, they moved to Rochester, Minnesota, where he completed his residency at the Mayo Clinic. Following his residency, they moved to St. Louis and began their family. It was only ten days after the birth of their son, Carl John, when the Gesslers packed up their young family once again and moved into a new home – this time in Huntsville, Alabama, in 1987.

"It was very hard not knowing anyone when we first moved to Huntsville," Sarah remarked. "But it has always been such a welcoming town."

It didn't take long for the Gesslers to become deeply involved in the Huntsville community and shortly after arriving, they met Betsy and Peter Lowe. "We used to travel every year, through both Carl and Peter's involvement with the BBVA Compass Board and we were able to get to know them very well and quickly became close friends," Sarah commented. "Really, they were my first exposure to the Museum."

One of the largest fundraisers for HMA is the annual Gala. This historic fundraiser has featured a long line of distinguished women who have supported the arts by leading the Gala committee. The first Gala fundraiser was held in 1992 and was chaired by Shelbie King. Jean Penney assumed the leadership role in 1993, followed by Betsy Lowe in 1994. In the Gala's fourth year in 1995, Sarah Gessler accepted the position as the Gala Co-Chair.

"The majority of the art that Carl and I own was purchased from the Gala art auctions over the years.



We have made it a point to purchase artwork from the different featured artists and I would say that 90% of our art collection was acquired through these auctions."

Sarah would later chair three more Gala fundraisers over the years, before joining the Foundation Board, and ultimately being appointed by the City of Huntsville to the Huntsville Museum of Art's Board of Directors in 2004, which is a position she still holds today.

After initially being exposed to the Museum through the Gala Committee, Betsy Lowe and Lyn Aust solicited the Gessler's

participation in the capital campaign fund to build what we now know as the Huntsville Museum of Art. (Previously, the Museum existed in a small space inside the Von Braun Center.)

The capital campaign fund for the new HMA building was a success and in 1998, the Museum's new facility was opened to the public in Big Spring Park. Later, Sarah was on the actual capital campaign fund committee for the Museum expansion that added seven galleries and increased the footprint to 75,034 square feet. The contributions Sarah and many others made changed the course of history for the Museum and allowed it to continue its growth and stature as one of the premier centers for art and culture in Alabama and the Southeast.

"I have many fond memories of what we call 'blockbuster' events. One blockbuster that stands out in my mind was for the *Becoming A Nation* exhibition. It was such a wonderful event that we all worked so hard on and it still amazes me that we were able to bring together many of the state politicians for the Black Tie Dinner on the opening night. Another highlight for me was serving on the search committee which was responsible

for hiring Christopher. I loved serving on that committee and am proud to have been a part of the team that secured him as Executive Director."

Sarah Gessler is one of the many outstanding patrons who have given of their time and talents to the Huntsville Museum of Art and who furthers the Museum's commitment to bring people and art together.



Sarah Gessler, Jean Penney, Betsy Lowe and Shelbie King



classical series

GERSHWIN & WEST SIDE STORY

Friday, September 21, 2018

TCHAIKOVSKY FIVE

Friday, October 19, 2018

BEETHOVEN EIGHT

and the Stars of the Huntsville Symphony Orchestra

Saturday, January 19, 2019

WE ♥ MOZART

Saturday, February 16, 2019

BRAHMS DANCES

Saturday, March 9, 2019

SUSANNA SINGS STRAUSS

Great Alabama Soloists

Saturday, May 4, 2019

WE SALUTE

Celebrating Our Veterans

Friday, November 9, 2018

WIZARD WANDS & LIGHTSABERS

The Music of John Williams

Monday, December 31, 2018

pops series

THE DOO WOP PROJECT

Presented without Orchestra

Saturday, February 2, 2019

THE BEST OF THE EAGLES

A Jeans 'n Classics Production

Saturday, March 30, 2019



1.



2.



3.



4.



5.



6.



7.



8.

**Connections: Hoss Haley,
George Peterson and
Tom Shields**
December 11, 2017

1. HMA Director of Curatorial Affairs Peter Baldaia making opening remarks
2. George Peterson, Katherine Purves, David Reyes, Charlie Sealy, Hoss Haley, Sasha Sealy, Peter Baldaia
3. George Peterson describing his process of turning old skateboard decks into works of art
4. Andrea Petroff, Kitty Roberts, Cindy Kamelchuk
5. A guest admiring the work of Tom Shields
6. Guests enjoying the gallery walk with the artists
7. Hoss Haley explaining the steps of transforming old appliances into modern art
8. A guest enjoying the exhibition



1.



2.



3.



4.



5.



6.



7.



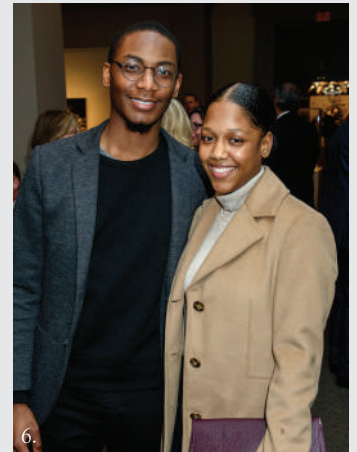
8.



9.

**General Michael P.C. Carns
The Terrorists of Today:
Cyber Warfare
January 25, 2018**

1. General Michael P.C. Carns speaking to a sold out crowd
2. Donny Maleknia, Jackie Berg, Fatemeh Nazarieh
3. Allen Young, Brandy Smith, Carole Anne Ellers
4. Bob and Renee McCaleb, The Honorable Loretta Spencer, Jim Hayes
5. Si and Kendra Garrett, Christopher Madkour
6. Joe and Marie Newberry, Bob and Phylis Baron
7. General Michael P.C. Carns (second from left; middle row) with Event Sponsors
8. Judy and Jim Link
9. Back Row: Julie Lewis Haynes, Victoria and General Michael P.C. Carns; Front Row: Eric and Tamara Lewis, Anne and George Lewis



**Unveiling of Luigi Lucioni's *Ethel Waters*
February 1, 2018**

1. Former owner of the portrait, Connie Wilson, and Luigi Lucioni Historian, Dr. Stuart Embury
2. Mayor and Mrs. Tommy Battle, Cynthia and Rey Almodovar
3. Mary and Frank Williams
4. Samuel Ramsey and Alexandra Felder
5. Robyn and Maeraine Moore
6. Julian Palmer IV and Ashley Seymour
7. Winford Maniece, Zakiya Joseph, Carlotta Maniece
8. Edward Williams, Renee Collins-Williams, Ina and Garrett Smith
9. Judy Maxwell, Anne Conner, Betsy Lowe, Jane Troup
10. Ann Charles and Tina Watts
11. David and Lee Nast
12. Anthony and Teneshia Daniels
13. Rita Collier, Chef Narvell, Faye Ewing, Deborah Nions, Daphne Ewing, Alicia Fredrick, Brenda Lewis, Mabelle Carter, Elaine Walker



10.



11.



12.



13.

HUNTSVILLE
CHAMBER MUSIC GUILD
2018-2019 SEASON



For season subscriptions, individual tickets,
and more information please contact:

www.hcmg.us | 256-489-7415 | info@hcmg.us

HCMG Concerts are held at:
Trinity Methodist Church
607 Airport Road, Huntsville

The Huntsville Chamber Music Guild Celebrity Concert Series has been made possible by grants from: The Alabama State Council on the Arts, The National Endowment for the Arts, The Jane K. Lowe Charitable Foundation, Arts & Cultural Grant from Arts Huntsville funded by the City of Huntsville



OCTOBER 6, 2018
Robert McDuffie and the
Center for Strings
Margery McDuffie Whatley, piano



NOVEMBER 10, 2018
Voces8



MARCH 29, 2019
Vincent DuBois, organ



JANUARY 18, 2019
Inon Barnatan,
piano



JANUARY 19, 2019
Calidore String Quartet
with Inon Barnatan, piano



FEBRUARY 1, 2019 Shanghai Opera Symphony Orchestra



APRIL 27, 2019
Celebrate the 50th Anniversary of the Moon Landing
Under the Rocket!



Angela Brown
soprano



Daniel Pesca
composer



Alexandra Fees
soprano

27th Annual Gala

2018 Gala Chairs

Leslie Evans, Beth McGee, Ashley Mitchell and Tabby Ragland

Luncheon Chairs

Kate Noble Purvis and Pride Sherrill

Black Tie Dinner Chairs

Suzan Boyce, Betsy Robinson and Jean Warren

Cocktail Party Chairs

Mandy DeOrio, Lori Meyer and Mandy Selman

Gala Sponsors

Huntsville Museum of Art and the 2018 Museum Gala Committee gratefully acknowledge and thank our sponsors:

Diamond Sponsor

Damson Automotive Group
HighTower Twickenham
Progress Bank and Trust

Platinum Sponsors

Bentley Automotive Group
Loewen Window and Door Center

Silver Sponsors

BBVA Compass Bank
Bill Penney Toyota
Clearview Cancer Institute – Dr. Philip McGee
Complete Dental
Hiley Cars of Huntsville
Iron Mountain Solutions
Jurenko Family Foundation
Maynard Cooper & Gale PC
Maynor & Mitchell Eye Center
Mercedes-Benz of Huntsville
Regions Bank
SportsMED Orthopaedic Surgery and Spine Center
Jean Wessel Templeton

Bronze Sponsors

Bradley, Arant, Boulton, Cummings LLP
Clinic for Women, P.A. Obstetrics & Gynecology
Genesis II
Mr. and Mrs. James Hargrove
Madison Street Advisors
McDaniel and McDaniel Attorneys
Moss Lumber
National Bank of Commerce
Pearce Construction Company, Inc.
Mr. and Mrs. Ward Ragland
Randolph School
Rheumatology Associates of North Alabama
Servis First
Smith-Thornton Advisors
TOC -The Orthopaedic Center
Mrs. David Warren Todd
Wells Fargo Private Bankers

Car Chance Sponsor

Century Automotive Group of Huntsville

Gala Luncheon with Designer Bettie Bearden Pardee

February 27, 2018



Tabby Ragland, Beth McGee, Leslie Evans, Ashley Mitchell



Sara Ahearn, Betsy Lowe, Patsy Haws



Anne Penney, Jean Penney, Katie Perkins, Chris Penney

Mark your calendars for the 28th Annual Gala in 2019!

Gala Luncheon: February 26 | Black Tie Dinner & Live Auction: February 28 | Cocktail Party & Silent Auction: March 2
We're pleased to announce the 28th Annual Gala Chairs: Tina Caudle, Tabby Ragland, Mandy Selman and Jean Warren



Lori Meyer, Mandy DeOrio



Suzanne O'Connor, Beth Wise, Bobby Bradley



Margot Shaw, Bettie Bearden Pardee

Gala Black Tie Dinner and Live Auction

March 1, 2018



Sara Ahearn, Beth McGee, Tabby Ragland, Leslie Evans, Ashley Mitchell



Kinsey and Chase Lindstrom, Emily Medlen



Cathy Anderson and Bill Stender



Jep and Sheri Buchanan, Steve Thornton



Dana and Jay Town



Raymond and Kristy Jones, Philip McGee



Austin and LeeLee Ray



Frank and Mary Williams



James Wessel and Jean Wessel Templeton



Middie and Tommy Thompson, Kathy Chan

27th Annual Gala

Gala Cocktail Party and Silent Auction

March 3, 2018



Lucinda and Marshall Schreeder, Caroline and Martin Schreeder



Beth and Rodney Richardson



Lori Meyer, Mandy Selman, Mandy DeOrio



Daiven and Ginger Harper, Walter and Melanie Strankman



Chris and Zack Penney, Lindsay and Michael Newlin



The Fountain City Players



Anna Ford, Dianne Sammons, Meggy Sabatini



Jason and Amanda Baldwin, Scott Weaver, Ron Poteat



Rebecca Bawcom, Katie Cochran, Jay and Kelly Durham



Joe and Marie Newberry, Dianne and James Reynolds



Tiffany Jordan, Kristen Strickland

MathAlive!
Presented By **Raytheon**

2 THE XTREME! MAY 26 TO SEPT. 3, 2018

MathAlive! is designed to inspire, spark the imagination, and reveal not only math at work but also the endless possibilities of math. Primarily designed for grades 3-8, the exhibition brings to life the real math behind what kids love most — video games, sports, fashion, music, robotics and more — and creates interactive and immersive experiences that bring to life the math at work in each, whether in design, application or use.



VISIT ▶ ROCKETCENTER.COM/MATHALIVE OR CALL ▶ 1-800-637-7223



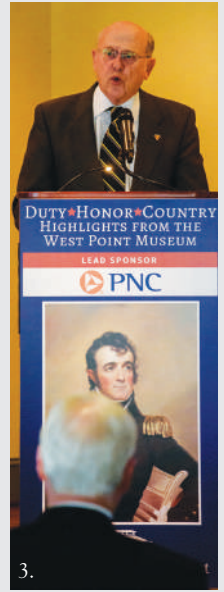
RocketCenterUSA



The championship golf course is only the beginning of the story.
theledges.com/membership



DUTY, HONOR, COUNTRY: LECTURE AND RECEPTION

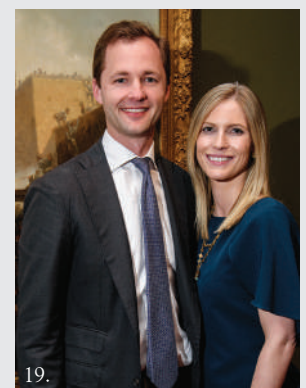




Duty, Honor, Country: Highlights from the West Point Museum Lecture and Reception

March 22, 2018

1. West Point Museum Executive Director, David Reel, speaking about the history of West Point
2. Lauren Vickrey, Christopher Madkour, (USA Ret.) BG General John Zierdt, Jr., Nick Willis, David Reel, Erin Stephenson, Marlene Sankey
3. John G. Zierdt, Jr., retired U.S. Army Brigadier General and West Point graduate speaking to a sold out crowd
4. Linda and Rob Akenhead
5. The Honorable Loretta Spencer, Dr. Jim Hayes
6. Connie and Rusty Stephenson
7. Tina Watts, Eula Battle
8. Hank Isenberg, Annette Birchfield, Leslie DeJesus, Brian House
9. Buddy Jones, Ruth Jurenko, Carole Jones
10. Don Wolfe, Sarah Curtis
11. Steve and Ramona Kreipe, Tom Adams, John and Mary Zierdt III
12. Leigh Pegues, Erin Stephenson, Ty Smith
13. Live music performed by the Arsenal Brass ensemble of the U.S. Army Materiel Command Band
14. Kathy and C.H. 'Tony' Chan
15. Mo and Lisa Khan, Carla Bossard, Jennifer Wu and Chris Sanders, Cecilia and Jeff Showalter
16. Marlene Sankey, Lauren Vickrey, Cassy Patty
17. (USA Ret.) BG General John Zierdt, Jr., Christopher Madkour, David Reel, Sarah Gessler
18. E.J. and Susan Sinclair, Angelier Baker, Keith Robinson
19. Kelly and Thomas O'Connor



Voices of Our Times: An Afternoon with Carolyn Roehm

April 5, 2018



1.

The sold out luncheon on April 5 with designer Carolyn Roehm closed our successful 2017-2018 *Voices of Our Times* series on a high note. Over 230 guests were greeted by wait staff passing glasses of Spanish Cava on shimmering silver trays. Following the reception, Chef Narvell served a sumptuous lunch, starting with chilled asparagus soup followed by sliced beef tenderloin on micro greens and finally a silky chocolate mousse for dessert.



2.



3.

Ms. Roehm's presentation featured the breathtaking homes and beautiful gardens she's designed in Connecticut, Aspen, New York City and Charleston. We extend our deep appreciation to Susan and Bruce Park, Randy Roper and Ken Rivenbark for hosting a lovely reception for Ms. Roehm and our sponsors the evening before at the elegant residence of Susan and Bruce Park.



4.

The success of our *Voices of Our Times* series would not have been made possible without the loyal support of our many sponsors. We are delighted to announce that a total of 600 guests attended John Dean, General Michael P.C. Carns and Carolyn Roehm this past season. Our 2019 roster of guest speakers will be highlighted in our fall issue of *ArtViews* and we urge you to make your reservations immediately when tickets go on sale. You will not want to miss out!



5.



6.



7.



8.



9.



10.



11.



12.



13.



14.



15.



16.

Voices of Our Times: Carolyne Roehm Sponsor Dinner | April 4, 2018

1. Betsy Lowe and Carolyne Roehm
2. Moss and Leslie Crosby, Susan and Bruce Park
3. Buffet setting at the Park residence
4. Jean Wessel Templeton and Kerry Doran
5. Carolyne Roehm and Susan Park greeting guests
6. Michael Bell, Patsy Haws, Adriane Villeta
7. Sally Stockton and Phyllis Anderson
8. Randy Roper, Carolyne Roehm, Ken Rivenbark, Judge Michelle Thomason, Rennie Vainstein, Diane Teague

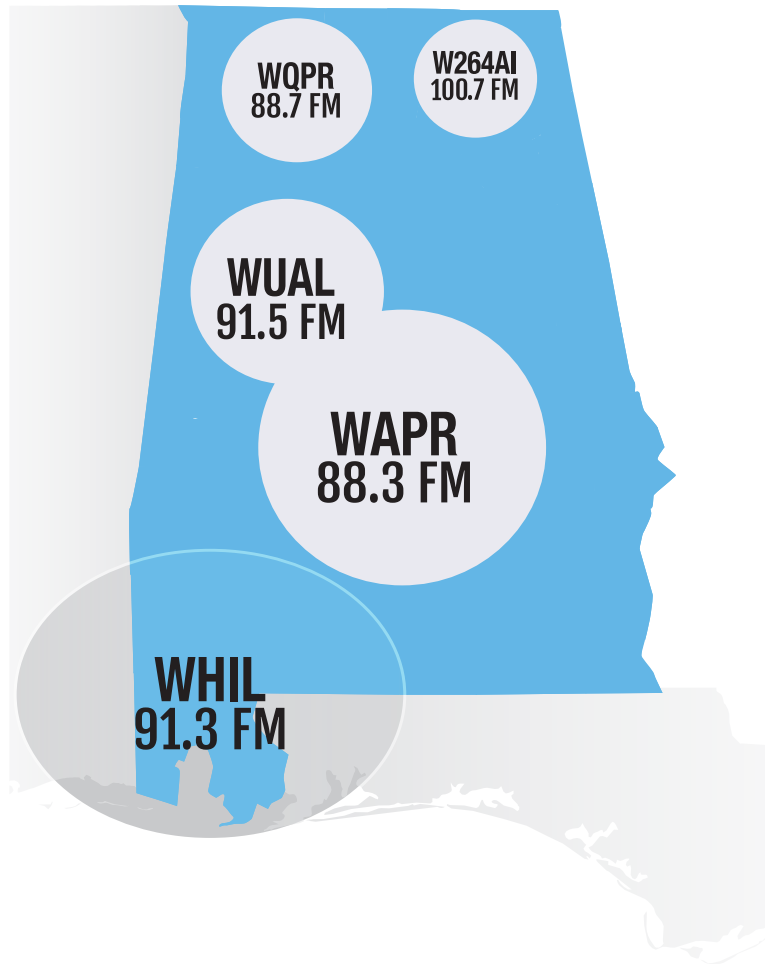
Luncheon and Talk | April 5, 2018

9. Carolyne Roehm speaking to a sold out luncheon
10. Sarah Gessler, Xan Curran, Cathy Scholl, Leslie Crosby, Carolyne Roehm, Shelbie King, Patsy Haws
11. Jean Penney and Sheree LeMon
12. Cathy Scholl, Ashley Walker, Tabby Ragland
13. Middie Thompson making opening remarks
14. Donny Maleknia, Dr. Heather James, Ronda Schickles, Dr. Foroogh Javadi, Fatemeh Nazariah
15. Virginia Griffith, Beth Wise, Jana Block, Hallie Johnson
16. Carolyne Roehm (front row; third from right) with Event Sponsors



**YAM 2018: Exhibition for Youth Art Month
Opening Reception and Awards Presentation for VAA Program and Congressional Art Competition
March 11, 2018**

1. Congressman Mo Brooks with the honorable mentions and overall winner of the Congressional Art Competition. 2. Live artist demonstration by Linda Ruhl. 3. The 2018 Visual Arts Achievement Program and the Congressional Art Competition student artists. 4. Charlie Lockmillier, Kim Ogle, Joyce Griffin, Christopher Madkour, Kelly McDougle. 5. Isaul, Isaul, Jr., Ivana and Sara Rubio. 6. Jonathan, Wynter and Whitney Aboko-Cole. 7. Gabrielle Caudle-Williams with Mayor Tommy Battle. 8. Congressman Mo Brooks with the overall winner of the Congressional Art Competition, Jessica Morrow.



From The Shoals to the shore
Alabama Public Radio
 has you covered!

Tune in or stream from
www.apr.org
 for the best local, regional,
 national and global news
 as well as classical music.



FANTASY PLAYHOUSE
 CHILDREN'S THEATER & ACADEMY

**EXPAND YOUR
 CREATIVITY**
 WITH FANTASY PLAYHOUSE

THEATRE ARTS
 TRAINING
 AGES 3-ADULT

fantasyplayhouse.com

- CAMPS & CLASSES
- PERFORMANCE SHOWCASES
- AFTER SCHOOL PROGRAMS
- ACTING CONSERVATORY
- TECHNICAL THEATRE
- SCOUT WORKSHOPS
- LIVE CHILDREN'S THEATRE

Huntsville Museum of Art Guild

What's a Street Food Gathering without a craft beer and wine bar? The Huntsville Museum of Art Guild will sell craft beer from local breweries, along with red and white wine on the Museum's patio outside of the Academy during this summer's Battle of the Food Truck All Stars.

View the calendar on the back page to see the upcoming Palette Pitstop dates!

Registration for Summer Studio Artworks Camps and Classes underway in the Museum Academy!

Looking for something fun and creative to do this summer? We offer a variety of camps and classes in two classrooms on the Plaza Level in the Museum overlooking Big Spring Park. Pre-registration is required, and all materials are provided for children's classes.

Following are just some of the educational classes being offered May through September. Space is limited, register online or call today. All New Projects! Classes are taught by experienced instructors and teaching artists who use the Museum – working in the studios to the galleries – as an expanded classroom. Don't miss this extraordinary opportunity! All materials are provided for the children's classes. All camp and class grade levels are completed grades this school year.



High School and Adult Classes

Colored Pencil Techniques
Wet Felted Flowers
Acrylics: Exploring Abstraction
From Pencil to Pastel: Drawing Techniques
Introduction to Oils
Ceramics: Handbuilding & Wheel Throwing
Introduction to Wire Working
Watercolor
Digital Photography
Absolute Beginner: How to Draw
Calligraphy
And more!

Preschool Classes (Ages 3-5)

Sparkle, Glitter & Glow
Mudworks
Dips, Dabs & Dots
Things that Crawl, Wiggle & Roar

Grades K-8 Half Day Camps

9 a.m.-12 p.m.
Ages 5-7 and 8-10: SCULPTacular!
Ages 5-7 and 8-10: Drawing FUNdamentals
Ages 8-10: Splish, Splash into Art!
Ages 11-13: Mixed Media - Drawing and Painting

Grades K-8 Full Day Camps

9 a.m.-3 p.m.
Ages 5-7 and 8-10: Meet the Masters:
Imaginary Animals

Grades K-8 Classes

Ages 5-8 and 9-13: Draw, Paint and Print;
Ceramics; and, Mix It Up
Ages 5 and up: Ready, Set, Paint
Ages 5-8: Spectacular Sketches
Ages 8-13: Bedazzled Jewelry Making
Ages 9-13: Easel Painting
Ages 9 and up: Ceramics
Ages 10 and up: Comics and Cartooning

Parent & Child Saturday Class

(Ages 5 and up)
Impressionistic Landscapes
Fabulous Faces
Morning Glory Masterpieces



Photo Release: Please note, the Huntsville Museum of Art may take photographs of Museum programs and events for use in publicity materials. Please notify the photographer if you prefer not to have your picture and/or your child's picture taken during the class.

Contact Amy Thomas, Museum Academy Assistant, for the schedule: athomas@hsvmuseum.org or call 256-535-4350 ext. 215. Register online at hsvmuseum.org under Learn – Camps, Classes and Programs and read Instructors' Bios. The Fall Schedule will be online on August 6.

Master Artist Workshops: Learn from a Master!

Don't miss the unique opportunity to receive one-on-one instruction from a nationally-recognized master artist. For more information about individual instructors, please visit their websites. For more details or to register, visit hsvmuseum.org or contact Laura E. Smith, Director of Education/Museum Academy at 256-535-4350 ext. 222.

Realistic Watercolor Landscapes with Alan Shuptrine Friday-Saturday, June 1-2 9 a.m. to 4 p.m.



Alan Shuptrine, *Beloved*, watercolor, © 2017
Skill Level: Intermediate to Advanced
 Fee: \$275 members/\$300 non-members

Strong Design and Bold Strokes in Watercolor with Keith Andry Thursday-Saturday, August 16-18 9 a.m. to 4 p.m.



Keith Andry, *Dora Canal*, watercolor © 2017
Skill Level: Beginner to Advanced
 Fee: \$450 members/\$475 non-members

Additional Master Artist Workshops in 2018

David Shevlino (October 18-21); Lian Quan Zhen (November 9-11); and Perry Austin (November 15-17).

Check our website for all upcoming workshops!

Thank you

Sponsors, Community Partners and
 Guild Members for another
 phenomenal year!

Your support is truly appreciated.

-Julie Andrzejewski
 Guild President 2017-2018



HUNTSVILLE MUSEUM of ART

Guild



Drop-in & CREATE Saturdays

Who: Appropriate for the entire family!
What: A hands-on art activity (no reservations necessary)
When: One Saturday of each month, 11 a.m.-1 p.m.
Where: Stender Family Interactive Education Galleries
Cost: FREE admission for parents/guardians and children

May 12: Mixed Media Mountain Landscapes

Inspired by the *Alan Shuptrine: The Serpentine Chain* exhibition of views of the Appalachian Trail, create your own scenic masterpiece using collage, pastel and other elements for embellishment. Make an artful card for Mother's Day!

June 9: Tessellation Creations

Learn about the art of M.C. Escher and the repeating, interlocking patterns he created called tessellations. Create your own cool designs that blend art with math. It's like magic!

July 21: Awesome Animal Assemblages

Construct your own unique animal art by assembling different media like popsicle sticks and tooling foil. Visit the *Encounters: Ted Whisenhunt* exhibit to see how he created kinetic sculptures out of wood, metal, and other materials.

August 18: Impressive Impressionism

Create your own Impressionist bridge scene inspired by the landscape of Big Spring Park. Don't miss our exhibit, *American Impressionist Art from the Thomas Clark Collection*.

September 15: The Art of Nature

Make your own artwork inspired by nature using texture rubbings and stamps. Visit our exhibit *Nature's Realm* to see how other artists have used nature to inspire their work.

DROP-IN & CREATE SUPPORTED BY:



Join us for Artsy Tots!

Learning is fun at the Huntsville Museum of Art for children ages 2-3 and their parent/guardian. Each Artsy Tots class will introduce toddlers to art and the Museum through age-appropriate artful short stories, gallery play activities and an art activity. The program helps with color recognition, fine motor skills, hand-eye coordination and more! Recommended for ages 24 months and up. There will be new themes for each class. Toddler classes last 45 minutes and are led by specially trained museum educators.

Artsy Tots classes are held on one Friday a month from 11-11:45 a.m. Class size is limited to 12 children. One adult chaperone is required for every two children. Dress for mess! Pre-registration is required. Space is limited! Register online at hsvmuseum.org under Learn – Camps, Classes & Programs. Questions? Contact Candace Bean, Education Associate, at cbean@hsvmuseum.org or 256-535-4350 ext. 223.

Artsy Tots Dates:

May 11: Loopsie Daisies
 June 8: Fuzzy Butterfly
 July 20: Artful Koi Fish
 August 17: Buzzy Bees
 September 14: Starry Sky

Class fee is \$5 members/\$7 non-members (up to 2 adults/2 children). Fees are non-refundable; however, registration is transferable to another session.

INDIVIDUAL MEMBERSHIPS

December 2017- March 2018

Artists' Circle: \$1,500

Kendra and Si Garrett
Mr. and Mrs. Byrd R. Latham
Dr. and Mrs. F. Calame Sammons
Mr. and Mrs. John H. Shields
and Family
Mr. and Mrs. George H. Thacker
Anne and Ed Uher
Mr. and Mrs. Mike Wicks

Benefactor: \$1,200

Dr. and Mrs. Robert A. Altenkirch
Mr. and Mrs. Eugene R. Andrzejewski
Ms. Julie Andrzejewski
Amanda and Steven Barnes
Mrs. Sally Barnett
Tiffani Combs-Davis
Fran and Joe Hidalgo
Dr. and Mrs. Bobby Johnson
Mr. and Mrs. George M. Jones III
Dr. and Mrs. Don A. Maccubbin
Kathy and Ed McCool
Kathy M. Lewis
Joan and Walter Mendes
Marie and Joe Newberry
Dr. and Mrs. Bradley Rice
Dr. and Mrs. Brian Scholl
Dr. and Mrs. T. Benton Washburn
Marcie and Bruce Wingo
Jennifer-Wu and Chris Sanders

Patron: \$600

Vicki and David Edward
Frances K. Huffman
Dr. Benjamin R. King
Mr. and Mrs. John R. Purdy
Dr. and Mrs. James A. Reynolds
Cynthia E. Stewart and
Arthur C. Johnson
Mr. and Mrs. Thomas M. Thompson

Sponsor: \$300

Laurel and John Bailey
Jim Bearden, Jr.
Mr. and Mrs. Joe Ed Bragg
Mary and John Burke
Jacalyn and Bryan Butler
Valerie and Jim Chesney
Shirley and Charles Feaux
John Fowler
Mr. and Mrs. David Johnston
Mark and Kristi Leberte
Mr. and Mrs. Joe Lee
Mr. and Mrs. Craig Lincoln
Russ McDonald
Dr. and Mrs. Robert S. Moorman, Jr.
Drs. Irma and Robert Pirtle
Mr. and Mrs. Jim Rountree
Patricia H. Ryan
Mr. and Mrs. Virgil Schaffer

Helen and Ed Vaughn
Mr. and Mrs. John Watts
Gisele and John Wilson
Mr. and Mrs. Newell Witherspoon
Linda and Gordon Woodcock
Mary Ruth Yates

Corporate: \$250

Kathy and Harvey Cutter
Susan and Bruce Park
Melinda Still and Harry Babin

Friend: \$175

Kenia and Roger Bultman
Mrs. Robbie Burlison
Mary Chaffee
Mary Coe and Dan O'Halloran
Marilyn Lands and Robin Cozby
Elizabeth Simmons and Joseph W. Cremin
Dr. and Mrs. Larry Crow
Doris Dean and Jennifer Burnell
Jennifer and Frank Drake
Deborah and Sam Fara
Mary Gray
Janie Green
Rajean and John Gully
Ms. Nancy Hanning
Amy and David Harbarger
Nicole and Tim Harper
MG (USA Ret.) and Mrs. John W. Holly
Ashley and Scott Hudson
Jane Jones
Dr. Lillian B. Joyce and Dr. Stephen Waring
Mr. and Mrs. Frank Alex Luttrell III
Mr. and Mrs. William C. Mastin
Dr. and Mrs. Philip J. McGee
Tara and Jeff Mello
Mr. and Mrs. David E. Moore
Dr. and Mrs. Charles Overstreet
Dr. and Mrs. John Panico
Trace Parish and Richard Reed
Beverly and Ralph Redrick
Ann and Ernie Rivard
Mr. Mike Roddy
Wynn and Stanley Rodgers
Dr. and Mrs. Marshall T. Schreeder
Mr. and Mrs. John R. Scott
Carolyn Stewart
Mr. and Mrs. Jesse Stutts
Linda Jean Suarez and Richard J. Twardzik
Carol and Jim Tevepaugh
Candice and Ted Thies
Mr. and Mrs. Howard A. Thrailkill
Jane R. Troup
Larry and Ann Tubbs
Richard Twardzik
Ann and Andy Williams

Contributor: \$100

Diana and Craig Akridge
F. Alida and C. Scott Akridge
Dr. and Mrs. Evans Alison
Dr. James A. Baird
Mr. and Mrs. Ray Baker
Susan and Gordon Bakken
Karen and Matt Ball
Patricia V. Barber
Mayor and Mrs. Thomas Battle

Teresa and Tommie Batts
Victoria Betterton
Nancy and Kam Bhagia
Mr. and Mrs. Randy Bounds
Ken and Ginny Bragg
Cynthia Brooks
Nancy Brower and Rusty Borman
Dr. Loretta G. Brown
Madelyn Poteat Bussey
Drs. James and Ana Byrne
Dr. and Mrs. Michael Castellano
Mary Beth and Jim Chamberlain
Dana and William Chancellor
Carol Codori and Ed Limback
Dr. and Mrs. William N. Confer
Lavonne and James Conner
Willie Corlew
Mr. and Mrs. Stephen Cornelius
Genia E. Corum
Mr. and Mrs. Russell V. Costanza
Angie and Rush Elkins
Mr. and Mrs. Steuart A. Evans
Mr. and Mrs. Steuart A. Evans, Jr.
Amy and Alan Fertig
Diane and Joe Fleming
Linda and Robert Fletcher
Kelly and Brad Flowers
Joan Funk
Laurie Garcia
Mrs. Bonnie Gardner
Ms. Kim Minkinow and Mr. Kirby W. Gaudin
Mr. and Mrs. Herman Gierow
Louise and Tony Graffeo
Dr. and Mrs. Roosevelt Green
Dr. and Mrs. Thomas M. Griggs
Sherri Gross
Laura Jo and George Hamilton
Mr. and Mrs. Morris Hammer
Lucia and Peter Harrison
Dr. and Mrs. David Hertha
Yvonne and Ralph Heusinger
Donald W. Holder
Phyllis and Hank Holland
Mr. and Mrs. Richard A. Holloway
Drs. Peggy and Bill Huddleston
Sherri and Jess Hudgins
Dr. and Mrs. Richard Hull
Dr. and Mrs. Schuyler F. Hunter
Judy and George Jolly
Sarah Lauren and Andrew Kattos
Donald Klem
Madeleine and Russ Koester
Lisa and Cal Langford
Mary Leo
Shirley Hurley Lievanos and Rick Lievanos
Mr. and Mrs. James P. Lindberg, Jr.
Dr. and Mrs. Peter C. Loux
Mr. and Mrs. Bob Ludwig
Nancy and Craig Lykins
Karen and Doug Madison
Laura and Darren Malone
Mr. and Mrs. LeRoy McClay
Ann McDonald
Margaret R. and John F. Miller
Elizabeth and Bert Moore
Dr. and Mrs. R. Charles Morley, Jr.
Karen and Tim Naff

INDIVIDUAL MEMBERSHIPS *(continued)*

December 2017- March 2018

- Dr. Sheela Parrish and Mr. Greg Parrish
Margaret Pelham
Laura Pierce
Dorothy and Joseph Rea
Louise and John Reynolds
John Randolph Roper and Ken Rivenbark
Mr. and Mrs. George W. Royer, Jr.
Mrs. Richard Rutenberg
Mr. and Mrs. Schuyler S. Sampson, Jr.
Darlene Springer
Lisa and Ronald Stephens
Mr. Bob Stottle
Mrs. Diane K. Strickland
Josephine Stroud
Elisa and Mark Stucker
Georgia and Dennis Suggs
Kitty and Luke Talley
Ronold B. Thomas
Gloria and Frederick Uhl
Laura and Johnnie Vann
Jayne and Stuart Venters
Dr. and Mrs. Larry Walker
Sally and Ben Walker
Charles Watkins
J.W. Weatherly
Jefflyn and Robert Weed
Carmen Westwick
Elisabeth W. Whitten
Elizabeth Wise
Mary Withington
Carol Wolf
Dr. and Mrs. Joe H. Woody
Mr. and Mrs. Thomas W. Young
- Family: \$85**
Mr. and Ms. Joe Adcock
Pam and B. Joe Alexander
Jeanne and Bobby Allen
Aruna and Amit Arora
Daco Auffenorde and Robert Rotstein
Mr. and Mrs. Larry Augsburg
Colin Bagwell
Becca and Brad Bain
Mr. and Mrs. Joseph Bergantz
Julie and Ross Blauwkamp
Dr. and Mrs. Peter C. Booher
Elizabeth and Gene Bowman
Mr. and Mrs. Walter W. Brandon, Jr.
Karen and Brian Brittain
Lori and Eric Brooks
Rachel and Todd Brown
Joan A. Buchanan
Frances and Adair Byrd
Dr. and Mrs. N. Ricky Byrn
Mr. and Mrs. Michael C. Camp
Alison and George Cannon
Lynn and Mike Carden
Louise and Brian Carter
James G. Carver
Jennifer and Stephen Case
Audley Chambers
Merri and Eric Christensen
Scott Clafin
Amanda and Aaron Clairday
Nancy and Ernest Colin
Amanda and Wayne Coots
Lorilee Crisp
Susan Cunningham
- Jeannette and David Custodio
Dr. and Mrs. Gregg DeLisle
Susan and Domenico DeMartino
Dixie and Ralph DeSanctis
Peggy and David Deutch
Ashley Dillon
Phaedra Dugan
Caroline and Eric Earhart
Darlene and John Ehinger
Sally Ekkens and Robert Sperr
Carole Anne and Conway Ellers
Timothy Eno
Dr. and Mrs. John R. Fairlamb
Mrs. Susan Farbman
Hillary and David Fernandes
Andrea Fisk
Patty and Keith Fitzgerald
Elizabeth and Patrick Fleming
Mona and Navid Foroughi
Susan and Mark Fortner
Frances and Walter Fountain
Mae and Jerry Galloway
Rebecca and Barry Gangi
Julie and Kevin Gold
June and Buddy Guynes
Katherine Hallett
Mr. and Mrs. Tommy Harper
Mrs. Yvonne P. Hawkins
Melissa and Wade Hays
Dr. Barbara Heath
Mrs. Helms
Mr. and Mrs. Charles P. Helms
Mr. and Mrs. Theodore Henrich
Cathy and Jeff Hewitt
Mrs. Joyce Hoar
J. and V. Hodges
Dr. Sanford Holland
Tamara and Thomas Hoskins
Angela and Charles Howald
David Howse and Family
Esther and John Hudgens
Ashley and Andy Huttula
Beth and Chris Hyde
Dalton Johnson
Lewis Johnson
Wendy and Charles Johnson
Joan Gail and William Johnson
Julie and Chuck Jones
Tony Jordan
Pat Keefe
Thomas G. Keith
Ellen Killough
Susan and Austin King
Amanda and Max Klein
Judith and Paul Kunitz
Holly and David Lawson
Melissa Lawson
Eric Lay
Charlene and Larry Lechner
LTC and Mrs. Robert R. LeJeune, Jr.
John Lewis
Stephanie and Daniel Lewis
Ginger and Parker Liles
Kimberly and Ernie Limbo
Carol Longshore
Kayla and Steven Manley
Mr. and Mrs. Mark Mantooth
- Amy and Mark Mata
Carmen Maynard
Stephanie and Martin McCarthy
Miriam McClendon and Jenny Tidwell
Kathy M. Lewis
Cecilia P. and Jeff E. McCracken
Mr. and Mrs. Tim McKechnie
Dr. and Mrs. Ira Merritt
Irene and Blake Mitchell
Jeni and Ray Monroe
Jane Montgomery
Mr. and Mrs. Ray Moring
Hillary and Richard Morris
Saundra Mothey
Suzy Naumann
Kristi Nix
Sarah and Tom Null
Dr. and Mrs. Ramsay P. Nuwayhid
Mary Louise and Greg Ogle
Laura and Marty Ohme
Mrs. Charlotte Olson and Mr. Timothy Tolar
Brittany Ortiz
Allison and Denny Parrish
Stephanie and Tripp Pearson
Mr. and Mrs. Ricky Peek
Patricia Sammon and Alan Petroff
Sarah and Luke Powell
Mr. and Mrs. Jeffrey A. Prozan
Mary and Jim Pruitt
Mrs. Delores Pullen Shelton
Robert Gear and Jing Qian
Ruth and Jay Rainey
Erin Reed
Sandy Reeves
Dale Rhoades and Family
Mr. and Mrs. Terry L. Roberts
Thomas Ruble
Lavinia and Michael Rudolphi
Donna L. Rush
Anita and Chris Russell
Mr. and Mrs. Stephen Samaras
Dr. and Mrs. Bernard J. Schroer
Ashley and John Scoggins
Liz and Dade Scott
Valerie and James Seaquist
Sybil Shearburn
Tinsley and Patterson Shedd
Mrs. Delores Pullen Shelton and
Mr. Harvey Shelton
Mr. and Mrs. Clay Sherrill
Cecilia and Jeff Showalter
Anya and Elliott Sievers
Mr. and Mrs. Jerome T. Skonieczny
Cathy and Carleton Smith
Joy Smith
Mr. Richard Smith
Dr. and Mrs. Norman Solliday
Richard Spencer
Shayla and Thomas Spindle
Barbara and Mike Stansky
Barbara Stovall
Mr. and Mrs. Michael Sudnik
Mr. and Mrs. Bruce Summerville
Kathy Thomas and Marc Couch
Sara and Steve Threlkeld
Mr. Michael Timberlake
Elizabeth and Donald Tomlin

Katherine and Ray Tomlinson
Mr. and Mrs. Jay Town
Lynn Troy
Ann Tucker
Mr. and Mrs. Lee Tucker
Wendy and Gary Tucker
Mr. and Mrs. Delbert Turner
Mr. and Mrs. Richard P. Van Valkenburgh, Jr.
William Vaughan
Karolyn E. Voigt and Chuck Hume
Sabina and Bob Wank
James Webster
Marcus Weiland
Martha Whitener
Heather Williams
Cheryl and Brian Witty
Andrea Word and Bill Allbritton
Mr. and Mrs. John Zeller and Family

Dual: \$75

Mr. and Mrs. Tal Adams
Mr. and Mrs. Fred W. Allen
Mr. and Mrs. Ralph Allen
Beth Andrew
Nicole and Jeremiah Arsenault
Barbara and Burnie Baker
Linda and Brad Barker
Shirley and Ralph Barnes
Mr. Charles A. Bashore
Dr. and Mrs. John W. Basore
Paul Batson
Susan and Rodney Bell
Gayle Biggs
Constance and Paul Blau
Bernadette Bolton and Diana Bolton
Mr. and Mrs. Charles Boudreau
Teresa Brackney
James Brandt
Dr. and Mrs. David S. Branham
Kathryn and John Breininger
William Brigadier
Anna and Wayne Bright
Mr. and Mrs. Charles Brown
Laura Brown and Jonathan Wright
Margaret and Hall Bryant III
Joanne and Frank Bugg
Barbara L. Bush
Joanna and John Caldwell
Eugenie Candon and W. Kevin Pelin
Dr. and Mrs. Richard R. Cannon
Mr. and Mrs. Jim Cape
S.K. Chen and Fan Tseng
Mr. and Mrs. John C. Christopher
Paula and Dean Clark
Mr. and Mrs. Daniel R. Clough
Thea and Wilson Coats
Charlotte Corley
Rev. and Mrs. James Daughtry, Jr.
Frank Davis
Mr. and Mrs. John Davis
June and Robin Denson
Louis Desser
Angie Dickinson
Geraldyn Donnelly
Cindy and Kevin Doty
Mr. and Mrs. Raymond Downard
Ellen and Harry Durgin

Martina and Allan Dyer
Hilda and Dennis Fakes
Mr. and Mrs. John H. Fargason
Ms. Gertrude Y. Gardner and
 Mr. Donald B. Fay
Karen and Wayne Ferguson
Margaret Fitzgerald
Mr. and Mrs. James E. Fowler
Lillie and John Galvin
Drs. Sharon and James Gardepe
Jan and Lisa Garren
Amanda and Nathan Garrison
Annette and Brad Gass
Mr. M.L. Gean
Amy Gentle and LTC Brooke Grubb
Janet and John German
Drs. Gail and Peter Gibson
Nancy and Steve Graham
Lois and Tim Grey
Courtney and Chip Gulbro
Linda Hamlett
Linda and Sam Henderson
Diane Hill and Edwin Yepes
Mr. and Mrs. Jim Hill
Mary and Thomas Hix
Karen and Michael Hoger
Carla Holder and Joseph Marchelites
Marjorie and Michael Holderer
Chelsea and Richard Holeman
Mr. and Mrs. Ralph Hoodless, Jr.
Diane and Gary Hudson
Kyle Husband
Blanche and Thomas M. Irby
Christi Jackson
Mr. and Mrs. Gary Joyce
Gayle and Robert Joyce
Debbie and Bill Joyner
Karen and Richard Jozefiak
Dr. and Mrs. P.R. Kakani
Christine and Greg Kamback
Kevin Kasperitis and Mike Corum
Elaine and Elias Katsaros
Mr. Dennis Keim
Mr. and Mrs. Andy Kelly
Susan Kersch and Rick Marrero
Jennifer and John Key
Sandra and Ron Klein
Jerry Kresge
Renate and Marcelle Kump
Joseph Mastromonico and
 Kathleen M. Leonard
Dr. and Mrs. Richard L. Lester
Mr. and Mrs. John Logan
Bryan Lorge
Mr. and Mrs. George Mahoney
Mary and Paul Marques
Susan McDonald and Carlos Carvajal
Mr. and Mrs. David J. McElroy
Patricia McInnis and Cheryl Barnes
Roxanne and Walter Melton
Mr. and Mrs. Robert R. Mitchell
Anne and George Mixon
Glenda and Steve Moeller
Margrit and Robert Moore
Barbara and Charles Morris
Dr. and Mrs. William F. Munson
Mr. and Mrs. James E. Murphree

Helon and Raymond O'Barr
Elizabeth and Kevin O'Brien
Susan and George O'Reilly
Melva Ochoa
Evelyn and Louis Ossip
Norma and Terry Palmer
Jovona and Daniel Payne
Mr. and Mrs. Jerry Perlman
Rebecca and Samuel Petersen
Pamela and John Piccirillo
Mr. and Mrs. Ran Pickell
Mr. John B. Rainey, Jr.
Mr. and Mrs. Douglas Raney
Martha Reed
Mrs. Patricia Richard and Miss Leslie Richard
Michele and Rick Rife
Kathleen and Kevin Riggs
Donald and Ned Rizzardi
Marilyn Robertson
Judy and Kevin Rodriguez
Leslie Ann Ruha
Marsha and Bob Schmiedescamp
Scarlett Scholte and Jeffery Beckley
Branwen Schuettpelez and Michael Garner
Jessica and John Schulz
Sally and George Shepard
Doris and Benny Sisk
Barbara and David Sizemore
Roseanne and Wayne Smythe
Nicholas Snead
Peggy and Don Stanley
Mr. and Mrs. Charles D. Stocks
Dr. and Mrs. Lyldon E. Strickland
Catherine and John Tackett
Judy and Gene Targonski
Lynne and Joe Vallyly
Joan and Gary Walker
Mr. and Mrs. Colby Wallace
Susan Welstead
Ellen and Darryl Werkley
Anne and Mike Wesley
Mr. and Mrs. Kenneth Wheeler
Marisa and Doug Wheelock
Michael Whitley
Margie and Michael Wiesman
Dianne and J.N. Williams
Janis and Bruce Williams
Barbara and Harold Winton
Mr. and Mrs. John P. Wolk, Jr.
Dr. and Mrs. Peter S. K. Yu
Carol and Frank Zorbino

Individual: \$55

Saleemah Ahamed
Beverly Allen
Debora Bailey
Tamera Balch
Charlene Barlow
Dana Bathurst
Sara B. Batson
Douglas Baulos
Sharon Bell
Pamela Blackwell
Ms. Deana Braden
Jane A. Bramall
Patricia B. Brewer
Bobbie Brooks

INDIVIDUAL MEMBERSHIPS *(continued)*

December 2017- March 2018

Carol Broussard	Lynda Hall	Mrs. Judy Maxwell	George M. Stroud	Honorary Members
Matt Buckelew	Mrs. Bonnie Hamner	Robert McCall	Steven T. Suess	Carl Bernstein
Judith Cameron	Richard Harper	Tricia McCoy	Ms. Jean Summers	COL Matthew Bogdanos
Rita Campbell	Ms. Delphia S. Hill	Molly McCrory	Marylee Svezia	Mario Buatta
Christi Carr	Linda Hill	Diana F. McNease	Amanda Talbert	General Michael P.C.
Mr. C. Winston Carroll	Jean Hinson	Angela Mead	Christine Teague	Carns
Alexander M. Cathey, Sr.	Leta Hix	William Milling	Tatyana Teper	John Dean
Vicky Cerniglia	Cheryl Holder	Nancy Mohlere	Deborah Thomas	Leigh Gallagher
Irene Charles	Nancy Hopper	Shirley Morrow	Linda B. Thomas	Wendy Goodman
Vennette Charlton	Essie Horton	Denise Murphree	Lucy Thomas	Haskell Harris
Dorothy Ann Chesley	Jimmy Lou Horton	Brenda Newman	Barbara Tran	Simon Jacobsen
June Clune	Emily Hueffed	Rose Norman	Charles Vaughn	India Hicks
Janice Colvard	Gina Hurst	Martha Jane Norrell	Chelsey Vaughn	Glenn Lowry
Claudia G. Conn	Arthur Ignatiadis	Michael Nunes	Ms. Nancy Wood Ward	Ali MacGraw
Anne Conner	Mrs. Sandra B. Ingalls	Trevah Oliver	Kathleen Watkins	Abraham D. Madkour
Natalie Cook	Kristen Ives	Kerry Pagel	Kami Watson	Frances Mayes
Natalie Couch	Bob Johnson	Sandra Peffer	Katrina Weber	Dean Mitchell
Helen Louise Crawford	Mary Margaret Batson	Al Phillips	Serpouhie A. Wegman	Betty Monkman
Janet Creech	Johnson	Leslie B. Pickett	Clyde Renee West	Charlotte Moss
Dee Ann Creel	Patricia Johnson	Shirley F. Pline	Richard N. Willey, Jr.	Joyce Carol Oates
Hal Cronkhite	Kristy Jones	Sally Pockman	Kay Williams	Bettie Beard Pardee
Jo Dalton	Sharon Justice	Liz Poleretzky	Carol L. Williamson	Julia Reed
Pat Darzi	Lavinia Kellenberger	Kathy Prince	Ms. S. Jean Winfrey	Renny Reynolds
Diana Davidson	Chev H. Kellogg	Ingrid Reck	Stephany Wingard	Carolyne Roehm
Barbara DeFalco	Maria Kilgore	Daphne Reed	Carol Wissmann	Ginny Ruffner
James Derrickson	Anne Kinder	Harry Reid	Anne Yates	Edwina Sandys
Debra Dunn	Alma Kingsbury	Charlotte Rhodes	Jean Yewell	David Sanger
David Edens	Hope Hankins Kirkpatrick	Dr. Barbara Rice	Student: \$30	Mr. and Mrs. William H.
Lisa Edwards	Brenda Lee Fabela Knoell	Nell D. Roberts	Kathy Bost	Told, Jr.
Ms. Sandra Ellard	Betty Koval	Linda Roebuck	Gerry Coffey	Gloria Vanderbilt
Mary Evans	Mary Krzyminski	Carole Rosenfeld	Emily Cook	Carleton Varney
Sarah Fanning	Jean Langford	Judith Rushton	Adelaide Farmer	Rebecca Vizard
Jason Fish	Mrs. Kay H. Lewis	Ms. Nicole Schroer	Patience Harvard	Bunny Williams
Betsy Fletcher	Dorothy Linn	John Shoemaker		
Lew Ford	Elizabeth Loder	Kim Simpson		
Ruth Fulmer	Ginger MacNealy	Barbara Smith		
Mrs. Shelia R. Gentle	Christine Madkour-	Ms. Patricia B. Smith		
Susan Gipson	Companion	Joanna Stachura		
Amy Goddard	Margaret Madrie	Marge Stamper		
Alice Kay Goodloe-Cutts	Pam Malito	Robin Still		
Heather Green	Lynne Matheny	Catherine Stone		

There are many ways to give to the Museum and each donor should consider the different methods and find the one that best suits their current situation. Your contribution to the Museum makes a significant difference and we are deeply grateful for your generosity to the arts. If you have any questions about the ways of giving, please contact the Director of Development, Andrea Petroff, at 256.535.4350 ext. 214.

TRIBUTES *December 2017-March 2018*

Memorials

In Memory of Bede Austen and Tempie Brady
Linda and Gordon Woodcock

In Memory of Janet C. Brockway
Stanley J. Brockway

In Memory of Chuck Boone
Judy Maxwell

In Memory of Margaret Belle Crow
Judy Maxwell

In Memory of Leslie Crowson
Judy Maxwell

In Memory of LTC Clarence Wayne Fisher
Mr. and Mrs. Foster McDonald

In Memory of Christine Kinnear
Lucille Thrasher

In Memory of Pat Kyser
Mr. and Mrs. Daniel R. Clough

In Memory of Blake McMullen
Jean M. Berry

In Memory of Doris Gers Minkinow
BABC LLP

Brookdale Garden Homes Association

Mr. and Mrs. Richard Crunkleton

Mr. and Mrs. Jerry Damson

Elmer Field

Dr. and Mrs. Richard Hull

Mr. and Mrs. Charles Jennings

Judy and Thomas Kitk

Neil Corporation

Michele and Rick Rife

Randy Roper and Ken Rivenbark

Mr. and Mrs. Gene Sapp

Christopher Vogel

Helen Waller

Mr. and Mrs. Sidney R. White

Jim Whiteside and Family

In Memory of Robert Mitchell
Judy Maxwell

In Memory of Norman Ruhl
Linda Ruhl

Honoraria

In Honor of the Huntsville Museum of Art Docents
Mrs. Clyde R. Ward

In Honor of Dr. and Mrs. Carl Gessler, Jr.
Jane R. Troup

In Honor of Dr. and Mrs. Frank Haws
Robbie Burlison

In Honor of Betsy and Peter Lowe
Jane R. Troup

In Honor of Christopher Madkour
Dolores K. Mahlmann

Jane R. Troup

In Honor of Judy Maxwell
Jane R. Troup

In Honor of Peter Baldaia
William D. Martin

In Honor of Linda Nagle
William D. Martin

In Honor of David Reyes
William D. Martin

In Honor of Rachel Stone
William D. Martin

ANNUAL GIVING

December 2017- March 2018

\$1,000-\$4,999

Kathleen and Philip Dotts
Ms. Ivy Downs
Linda Ruhl

\$500-\$999

Anonymous
Mr. and Mrs. Tom Berg
Douglas Mariboe
Stephanie McCullough
Linda and Gordon Woodcock

\$100-\$499

Stanley J. Brockway
Dr. and Mrs. Richard R. Cannon
Martha and John Collins
James Coombs
Kathryn and William Dietz
Marcie and William Emerson
Carol and William Freeman
Bonnie Gardner
Peggy Heflin Gattis
Mr. and Mrs. George M. Heeschen
Mrs. Joyce D. Hoar
Mr. and Mrs. George M. Jones III
Jane S. Jones
Mr. and Mrs. Donald Lewter
Mr. Daniel Little
Dr. and Mrs. Abraham Madkour
Linda and Bill McAllister
Suzanne O'Connor
Mr. and Mrs. Thomas Pierce
Patricia H. Ryan
Noel and William Shinn
William Stevenson
Mrs. Clyde R. Ward
Kennie and Len Worlund

\$1-\$99

Anonymous
Alice Cheney
Mr. and Mrs. Daniel R. Clough
Louise and Joseph Dell
Mr. and Mrs. John Dethero
Mr. and Mrs. Herman P. Gierow
Mrs. Beth Griggs
Fran and Joe Hidalgo
Dolores K. Mahlmann
William D. Martin
Maria Rutledge
Roseanne and Wayne Smythe
Mr. and Mrs. Michael Sudnik
Mr. and Mrs. Richard B. Williams

Endowment Support

December 2017-March 2018

A gift to the Huntsville Museum of Art's endowment is one of the most enduring contributions you can make to the Museum. Endowed funds play an essential role in our future growth and long-term financial security. A donation to the endowment fund may be designated for a specific program, art purchase or directed to unrestricted use.

If you are interested in making a gift to the Museum's endowment fund, please contact Andrea Petroff at 256-535-4350 ext. 214 or apetroff@hsvmuseum.org.

MASTERPIECE SOCIETY

January-December 2017

An elite society of Members who support the Museum through either one-time or cumulative giving throughout the year of \$5,000 or more.

Platinum Circle \$20,000 +

Alabama Media Group
Alabama State Council on the Arts
Mr. and Mrs. Rey Almodovar
Century Automotive
IBERIABANK
PNC
Progress Bank
The City of Huntsville
The Jane K. Lowe Charitable Foundation
Toyota Motor Manufacturing Alabama, Inc.

Gold Circle \$10,000-\$19,999

Betty Altherr Howard
Bentley Automotive
Mr. and Mrs. Jerry Damson
First Bank
Dr. and Mrs. Carl J. Gessler, Jr.
Joyce Griffin
Dr. and Mrs. Frank P. Haws
High Tower Twickenham
Jerry Damson Honda Acura Line-X LLC
Mr. and Mrs. Peter L. Lowe
John Daniel Pond Residential Design Services
Mr. and Mrs. John H. Shields and Family
Ms. Jean Wessel Templeton
The Jurenko Foundation
The Propst Foundation
Wells Fargo Bank, N.A.
Mr. and Mrs. Frank Williams

Silver Circle \$5,000-\$9,999

Audio Insight Inc.
BBVA Compass Bank
Bill Penney Toyota
Bobby Bradley and Charley Burruss
Alice Chang
Clearview Cancer Institute
Complete Dental
Mr. and Mrs. Richard L. Crunkleton
Donny's Diamond Gallery Inc.
Mr. and Mrs. Thomas J. Doran
Dr. and Mrs. Jerry M. Graham
Dr. and Mrs. Parker Griffith
hibu Inc.
Hiley Cars Huntsville LP
Home Choice Windows & Doors LLC
Mr. and Mrs. George M. Jones III
Mrs. Shelbie King
The Kuehlthau Family Foundation
Landers McLarty Nissan of Huntsville
Lockheed Martin
Madison Street Wealth Advisors
Mrs. Judy Maxwell
Maynard Cooper and Gale PC
Maynor & Mitchell Eye Center
Mr. and Mrs. John T. Moss
Mr. and Mrs. Michael Mouron
Papa John's Pizza - Team PJ Cheese Inc.
Randolph School
Mr. and Mrs. James W. Reynolds
Randy Roper and Ken Rivenbark
Dr. and Mrs. Brian Scholl
Sasha and Charlie Sealy
Dr. and Mrs. Jason Selman
Mrs. Mark C. Smith
SportsMED
Mr. and Mrs. Rusty Stephenson
The Boeing Company
Mr. and Mrs. Edward L. Uher
Carolyn Wade

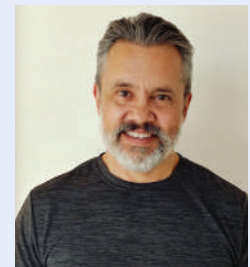
Employee News



Michelle Driggs



Harold Lamberson



Doug Lighton

Lately, you may have seen some new faces around the Museum. We'd like to officially welcome our new executive staff members to the Museum family: Michelle Driggs, Harold Lamberson and Doug Lighton.

Michelle serves as the Executive Assistant to the Museum's Executive Director, as well as the Museum's liaison with the Guild. In her free time, Michelle enjoys running half marathons!

Harold has been appointed as the new Security Supervisor. He and his wife, MaryBeth, have a daughter and they enjoy riding motorcycles and lifting weights.

Doug is now the Facility and Grounds Manager for the Museum. You may see Doug out downtown walking his dog, Lenny, while he captures beautiful photographs of historical landmarks.

EXHIBITION AND PROGRAM SPONSORS

As of March 31, 2018

Voices of Our Times

Series Sponsors



Series Media Sponsor

Alabama Media Group

Carolyne Roehm

April 6, 2018

Lead Sponsor

Jean Wessel Templeton

Event Sponsors

Revelle Gwyn

Patsy Haws

Lucinda Schreeder

Linda Smith

The Ledges

Carolyn Wade

Jana Block

Charlie Bonner

Valerie Chandler

Leslie Crosby

Xan Curran

Kerry Doran

Carole Jones

Shelbie King

Eleanor Loring

Betsy Lowe

Judy Maxwell

Clara Payne

Jean Penney

Anne Robinson

Randy Roper

Cathy Scholl

Susan Sexton

Reception Sponsors

Susan and Bruce Park

Randy Roper and Ken Rivenbark

Media Sponsor

flower magazine

Additional Support

Lyn Aust

Buckets & Blooms

Brooks & Collier

Catering by Narvell

Mullins Special

Occasions

Event Committee

Leslie Crosby, Chair

Xan Curran

Sarah Gessler

Patsy Haws

Shelbie King

Betsy Lowe

Cathy Scholl

Margs at the Museum

May 3, 2017

Event Sponsors

Dunagan Yates & Alison Plastic Surgery

Center, given in Memory of Dr. Deason Dunagan

Bill Penney Toyota

Museum Academy and Docent Association

Supporter

Alice Chang

Naming Gift Opportunities

December 2017-March 2018

Naming gift opportunities at the Huntsville Museum of Art have a tangible impact on our mission to bring people and art together. While supporting the building fund, these gifts allow us to honor and recognize our incredible patrons and friends of the Museum.

If you are interested in naming gift opportunities at the Museum, please contact Andrea Petroff at 256-535-4350 ext. 214 or apetroff@hsvmuseum.org.

Alan Shuptrine: The Serpentine Chain

May 13-August 5, 2018

Lead Sponsor



Platinum Sponsor

Anonymous

Gold Sponsors

Susan and Cobb Alexander

Kay and Earl Eastin

Mr. and Mrs. Frank Williams

Nancy W. Van Valkenburgh and Julie

V. Lockwood – Van Valkenburgh & Wilkinson REALTORS®

Silver Sponsors

Aerojet Rocketdyne

Mr. and Mrs. Eugene Andrzejewski

Julie Andrzejewski

Sally Barnett

Laura Jo and George Hamilton

Fran and Joe Hidalgo

Dr. and Mrs. Bobby Johnson

Kathy and Ed McCool

Marie and Joe Newberry

Dr. and Mrs. James A. Reynolds

Dr. and Mrs. Bradley Rice

Jennifer Wu and Chris Sanders

Kathi and Norm Tew

Debbie and Ben Washburn

Wells Fargo

Martha and Peter Wilson

Marcie and Bruce Wingo

Bronze Sponsors

Henri and Marcus Helslowski

Sue and Travis Hensley

Charles Jones – Merrill Lynch

Cindy and Lee Kamelchuk

Katali Designs

Cheryl and Jim Matthews

Suzanne M. O'Connor

Sonoma Shoppe

Barbara Tran

Anne and Ed Uher

Laura and Johnnie Vann

Media Sponsors

Alabama Media Group 256 Magazine

American Impressionist Art from the Thomas Clark Collection

July 29-September 23, 2018

Exhibition Sponsors

Kathy and C.H. 'Tony' Chan

Betsy and Peter Lowe

Sheila and John Irby

Dianne and Calame Sammons

Additional support provided by

The Alabama State Council on the Arts

Altherr Howard Design

The Huntsville Museum of Art Guild

Museum Academy and Docent Association

Alice Chang

Sponsor Memberships

December 2017-March 2018

Platinum Circle

Jerry Damson Honda Acura

Progress Bank

The Propst Foundation

Gold Circle

Bentley Automotive

HighTower Twickenham

Home Choice Windows & Doors LLC

IBERIABANK

SAIC

The Broadway Group LLC

The Jurenko Foundation

Toyota Motor Manufacturing Alabama Inc.

Silver Circle

BBVA Compass Bank

Dr. and Mrs. C.H. 'Tony' Chan

Clearview Cancer Institute

Mr. and Mrs. Mike Goodman

Dr. and Mrs. R. Parker Griffith

Hiley Cars Huntsville LP

Mrs. John A. Jurenko

Maynor & Mitchell Eye Center

Dr. Melinda Musick

Redstone Federal Credit Union

Regions Bank

Science and Engineering Services Inc.

Mr. and Mrs. Charlie Sealy

SportsMED Orthopedic Surgery & Spine Center

Ms. Jean Wessel Templeton

The Kuehlthau Family Foundation

President's Circle

BB&T

Mr. and Mrs. Earl I. Eastin

Linda and James Hargrove

Madison Street Wealth Advisors

McDaniel and McDaniel LLC

Moss Lumber Industries Inc.

Pearce Construction Company Inc.

Randolph School

Smith Thornton Advisors LLC

The Honorable Loretta Spencer

Van Valkenburgh & Wilkinson Properties Inc.

Carolyn Wade

Wells Fargo Bank N.A.

Artists' Circle

Dunagan Yates and Alison Plastic Surgery Center

Shelbie King

Kelly and Thomas O'Connor

Walmart

Ruth and Allen Yates

In-Kind Support

December 2017-March 2018

Altherr Howard Design

Mr. and Mrs. Thomas Doran

Dr. and Mrs. Frank P. Haws

Christopher J. Madkour

Shults Design

MAY

3-6	9 a.m.-4:30 p.m.	Master Artist Workshop with David Dunlop; pre-registration required
3	6-8 p.m.	Margs at the Museum
10	6:30-9:30 p.m.	Foothills to Fine Art: Bluegrass, Boots & Appalachian Roots Opening Party for Alan Shuptrine: <i>The Serpentine Chain</i> , hosted by HMA Guild
11	11-11:45 a.m.	Artsy Tots: Loopsie Daisies ; pre-registration required
12	11 a.m.-1 p.m.	Drop-in & CREATE Saturday: Mixed Media Mountain Landscapes
13	12-5 p.m.	Alan Shuptrine: The Serpentine Chain OPENS
17	5:30-7 p.m.	Huntsville Photographic Society: 2018 Members' Showcase Opening Reception
20	12-5 p.m.	Huntsville Photographic Society: 2018 Members' Showcase OPENS

JUNE

1-2	9 a.m.-4 p.m.	Master Artist Workshop with Alan Shuptrine; pre-registration required
8	11-11:45 a.m.	Artsy Tots: Fuzzy Butterfly ; pre-registration required
9	11 a.m.-1 p.m.	Drop-in & CREATE Saturday: Tessellation Creations
22	5-9 p.m.	Palette Pitstop hosted by the HMA Guild on the patio in the park
24	2-2:45 p.m.	Docent-led, Public Tour of <i>Encounters: Jim Jobe</i>

JULY

4	11 a.m.-5 p.m.	Independence Day open to the public
8	2-2:45 p.m.	Docent-led, Public Tour of <i>Duty, Honor, Country: Highlights from the West Point Museum Collection</i>
15	12-5 p.m.	The Life and Art of Mary Petty FINAL DAY
15	1-1:45 p.m.	Docent-led, Public Tour of <i>The Life and Art of Mary Petty</i>
15	12-5 p.m.	Encounters: Ted Whisenhunt OPENS
15	2-4 p.m.	Gallery Walk <i>Encounters: Ted Whisenhunt</i>
20	11-11:45 a.m.	Artsy Tots: Artful Koi Fish ; pre-registration required
20	5-9 p.m.	Palette Pitstop hosted by the HMA Guild on the patio in the park
21	11 a.m.-1 p.m.	Drop-in & CREATE Saturday: Awesome Animal Assemblages
28	5:30-7:30 p.m.	American Impressionist Art from the Thomas Clark Collection Members' Lecture and Preview Party
29	12-5 p.m.	American Impressionist Art from the Thomas Clark Collection OPENS

AUGUST

5	12-5 p.m.	Alan Shuptrine: The Serpentine Chain FINAL DAY
5	12-5 p.m.	Huntsville Photographic Society: 2018 Members' Showcase FINAL DAY
5	2-2:45 p.m.	Docent-led, Public Tour of <i>Alan Shuptrine: The Serpentine Chain</i>
9	4:30-7:30 p.m.	Biergarten at the Rocket Center , proceeds benefit HMA
16-18	9 a.m.-4 p.m.	Master Artist Workshop with Keith Andry; pre-registration required
16	5:30-7 p.m.	Artist Demonstration with Gayle Power
17	11-11:45 a.m.	Artsy Tots: Buzzy Bees ; pre-registration required
17	5-9 p.m.	Palette Pitstop hosted by the HMA Guild on the patio in the park
18	11 a.m.-1 p.m.	Drop-in & CREATE Saturday: Impressive Impressionism
19	12-5 p.m.	Looking at the Collection: Nature's Realm OPENS
19	2-4 p.m.	Gallery Walk <i>Looking at the Collection: Nature's Realm</i>

SEPTEMBER

6	5:30-7 p.m.	Artist Demonstration with Linda Ruhl
14	11-11:45 a.m.	Artsy Tots: Starry Sky ; pre-registration required
15	11 a.m.-1 p.m.	Drop-in & CREATE Saturday: The Art of Nature
21	5-9 p.m.	Palette Pitstop hosted by the HMA Guild on the patio in the park
23	12-5 p.m.	Encounters: Ted Whisenhunt FINAL DAY
23	12-5 p.m.	American Impressionist Art from the Thomas Clark Collection FINAL DAY
23	2-2:45 p.m.	Docent-led, Public Tour of <i>American Impressionist Art from the Thomas Clark Collection</i>



Alan Shuptrine, *Into the Clearing*, watercolor, 14 x 11 in. Collection of Sharon DuMont-Gilley.

Open on
Independence Day

Museum Hours

Sunday	12-5 p.m.
Monday	Closed
Tuesday	11 a.m.-5 p.m.
Wednesday	11 a.m.-5 p.m.
Thursday	11 a.m.-8 p.m.
Friday	11 a.m.-5 p.m.
Saturday	11 a.m.-5 p.m.

Admission

Members and children under 6 free!
Adults: \$12
Children 6 and up and Students: \$5
Seniors, Active Military and Educators: \$8
After 5 p.m. Thursdays: \$5
Adult Group Tours (10+): \$8 each
School Tours (P-12): \$5 each

For all upcoming camps, classes and workshops, view the Academy Schedule at hsvmuseum.org.



Huntsville Museum of Art

300 Church Street S.W., Huntsville, Alabama 35801
256-535-4350 hsvmuseum.org

PRST STD
U.S. Postage
PAID
Huntsville, AL
Permit No. 682



Editor: Samantha Nielsen
Design: Red Dot Communications
Photography: Museum Staff, Jeff White Photographer and Ronald Pollard Photography



When it's the time, this is the place...



Ceremonies | Receptions | Luncheons | Dinners | Meetings | and More!
View all available rental spaces at hsvmuseum.org or call Lil Parton at 256.535.4350 ext. 207 today.