

# Poisonous Plants Common in Arizona Gardens and Homes

12/9/2019



## Poisonous Plants Common in Arizona Gardens and Homes

**Tony Knight BVSc., MS, DACVIM  
Pima County Master Gardener**



# Poisonous Plants Common in Arizona Gardens and Homes

12/9/2019

## The following will be discussed in this presentation

- Poisonous garden and house plants commonly grown in Arizona  
Poisonous plants affecting dogs and cats



*Rain Lily*



*Arizona poppy*



*Coral bean*

## Plants most commonly reported to Poison Center Hotlines

- 1. *Capsicum*
- 2. *Dieffenbachia*
- 3. *Philodendron*
- 4. *Caladium*
- 5. *Spathiphyllum*
- 6. *Datura*
- 7. *Euphorbia*
- 8. *Ficus*
- 9. *Narcissus*
- 10. *Phytolacca*
- 11. *Zantedeschia*
- 12. *Ilex*
- 13. *Epipremnum*
- 14. *Iris*
- 15. *Eucalyptus*
- 16. *Ephedra*
- 17. *Hedera*
- 18. *Arisaema*
- 19. *Piper nigrum*
- 20. *Begonia*

<http://www.petpoisonhelpline.com/poisons/>





# Poisonous Plants Common in Arizona Gardens and Homes

## Toxic House & Garden Plants

- Arrowhead plant (*Syngonium podophyllum*)
- Asparagus fern (*Asparagus densiflorus*)
- *Begonia species*
- Caladium (*Caladium bicolor*)
- Cardboard palm (*Zamia furfuracea*)
- Chinese evergreen (*Aglaonema modestum*)
- Coontie (*Zamia pumila*)
- Corn plant (*Dracaena fragrans*)
- Cuban oregano (*Plectranthus cubensis*)
- Cycads (*Cycas and Zamia species*)
- *Dracaena species*
- Durant (*Dieffenbachia amoena*)
- Elephant's Ear (*Colocasia spp.*)
- Fiddleleaf fig (*Ficus lyrata*)
- Golden pothos (*Scindapsus aureus*)
- Ivy (*Hedera species*)
- Norfolk Island Pine (*Araucaria heterophylla*)
- Philodendron species
- Pothos (*Epipremnum aureum*)
- Rubber plant (*Ficus elastica*)
- Sago palm (*Cycas revoluta*)
- Satin pothos (*Scindapsus pictus*)
- Schefflera species (*Schefflera actinophylla*)
- Shamrock (*Oxalis spp.*)
- Peace lily (*Spathiphyllum*)
- Split-leaf philodendron (*Monstera deliciosa*)
- Taro (*Colocasia esculenta*)
- Ti plant (*Cordyline fruticosa*)
- Tree philodendron (*Philodendron selloum*)
- Yew (*Taxus spp.*)

<http://www.aspca.org/pet-care/animal-poison-control>

## Toxic House Plants

Amaryllis (*Hippeastrum species and hybrids*)

*Anthurium scherzerianum*

Cycads (*Cycas and Zamia species*)

Clivia (*Clivia miniata*)

Crown of thorns (*Euphorbia milii*)

Cyclamen

Hyacinth (*Hyacinthus species and hybrids*)

Jerusalem Cherry (*Solanum pseudocapsicum*)

Aloe vera (*Aloe barbedensis*)

Jade plant (*Crassula ovata*)

*Kalanchoe species*



# Poisonous Plants Common in Arizona Gardens and Homes

12/9/2019

## Poisonous Native Plants

To name but a few...

- Locoweeds
- Death camas
- Lupine
- Nightshade
- Larkspur
- Water hemlock
- Milk weeds
- Senecio



*Mirabilis jalapa*  
Malati, 4 o'clocks

**“The dose makes the poison”**



What plant has the  
most potent toxin?

**ABRIN**

Rosary Pea  
*Abrus precatorious*

Toxin - Abrin



# Poisonous Plants Common in Arizona Gardens and Homes



**Castor oil plant**  
***Ricinus communis***



**RICIN**





# Poisonous Plants Common in Arizona Gardens and Homes

12/9/2019

**Oleander**  
*Nerium oleander (indicum)*



**Cardiotoxic** 





**Yellow Oleander - *Thevetia peruviana***

# Poisonous Plants Common in Arizona Gardens and Homes

12/9/2019

**Cardenolides are concentrated  
in the leaves, flowers and seeds**

**Heart dysrhythmia  
Death**

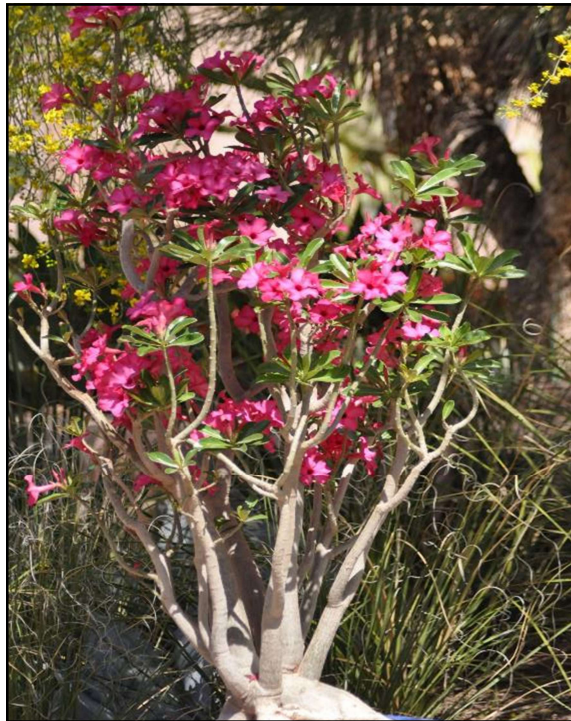
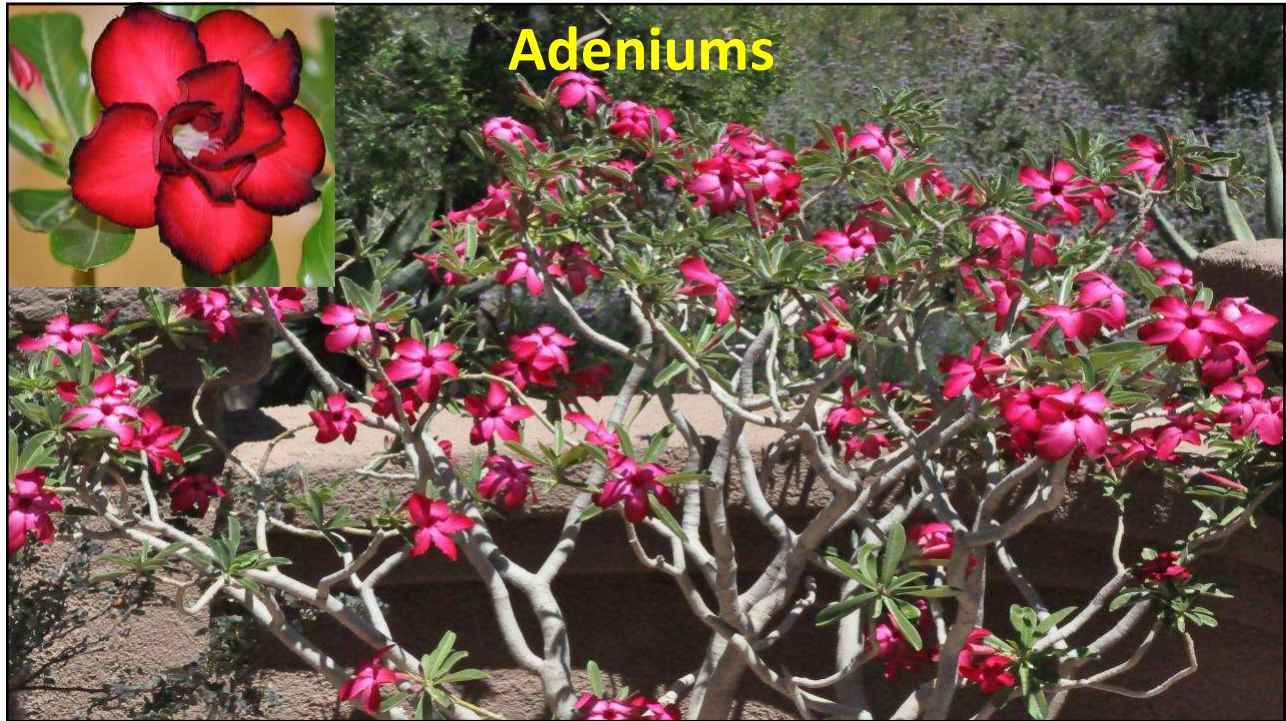


**Is compost made from  
oleander leaves safe to use  
on a vegetable garden ?**



# Poisonous Plants Common in Arizona Gardens and Homes

12/9/2019



**Desert rose**  
***Adenium* species**  
**Many hybrids**

Many Cardiotoxic alkaloids  
in all parts of the plant

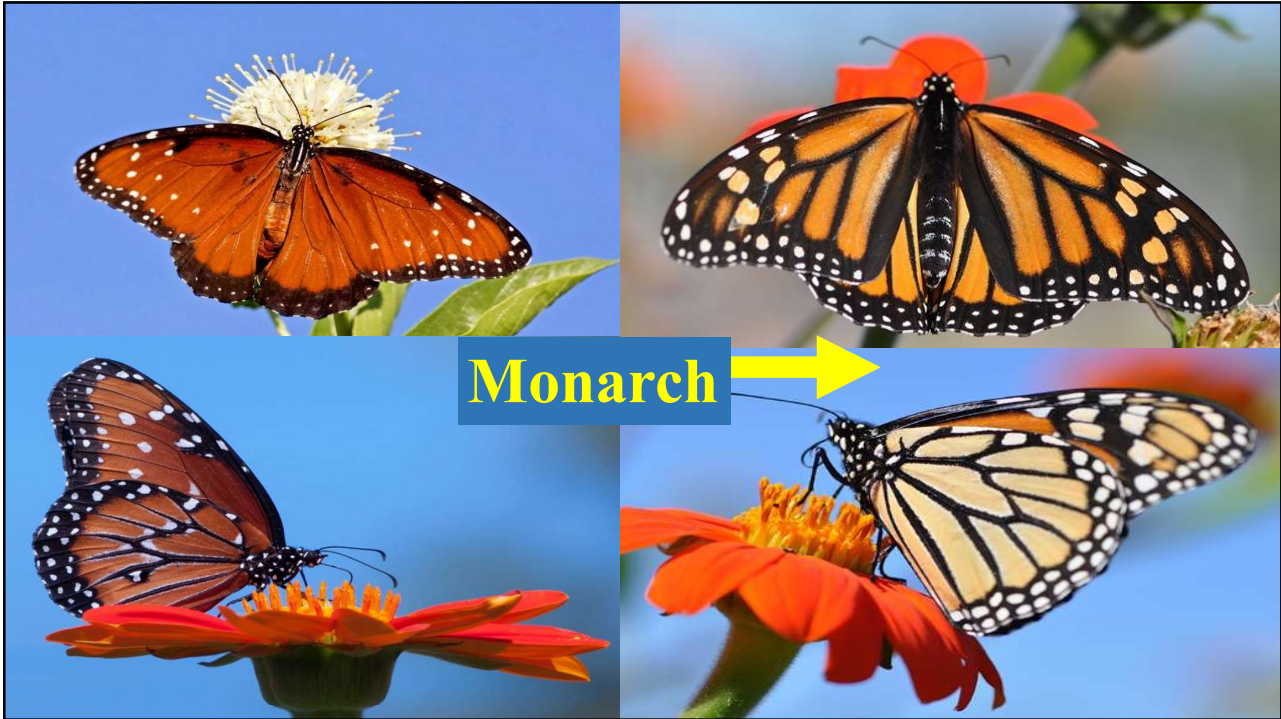


# Poisonous Plants Common in Arizona Gardens and Homes

Milk weeds – *Asclepias* species



All are cardio-toxic



Monarch



# Poisonous Plants Common in Arizona Gardens and Homes

12/9/2019



## 10 of the world's most Deadly Plants

- Castor bean
- Water hemlock
- Poison hemlock
- Yew
- Oleander
- Monk's hood
- White snake root
- Angel's trumpet
- Carolina jasmine
- Manchineel, manzanilla de la muerte
- Suicide tree (*Cerbera odollam*)

<http://io9.gizmodo.com/5841540/10-of-the-worlds-deadliest-plants---and-how-they-kill-you>

# Poisonous Plants Common in Arizona Gardens and Homes

12/9/2019



**Peyote – *Lophophora williamsii***



**Mescaline  
Psychoactive**



# Poisonous Plants Common in Arizona Gardens and Homes

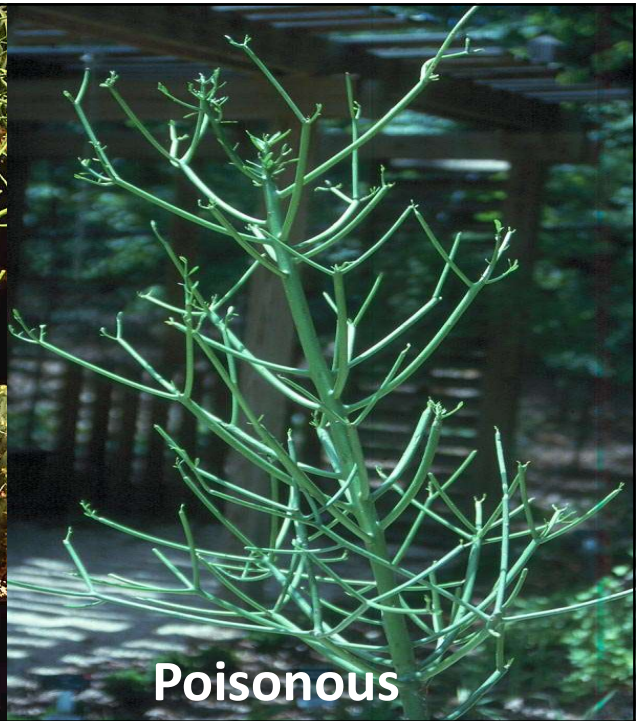
12/9/2019



***Euphorbia tirucalli***  
Pencil cactus  
'Sticks of Fire'



Pencil tree  
***Euphorbia tirucalli***



**Poisonous**



# Poisonous Plants Common in Arizona Gardens and Homes

12/9/2019



**Slipper plant, Gallito**  
*Euphorbia tithymaloides*  
(*Pedilanthus tithymaloides*)  
Euphorbiaceae

**Irritant sap**



**Candelabra Cactus**  
*Euphorbia lactea*

**Irritant sap**



# Poisonous Plants Common in Arizona Gardens and Homes

12/9/2019

Christ thorn  
*Euphorbia milii*



Myrtle spurge  
*Euphorbia myrsinites*



## Aloes

Over 450 species

### *Aloe barbadensis (Aloe vera)*

The sap contains potent purgatives

- Barbaloin (anthraquinone) converted by intestinal bacteria to Aloe-emodin.

# Poisonous Plants Common in Arizona Gardens and Homes

12/9/2019

**Ipomoea species**  
**Morning Glory**

**Lysergic alkaloids**  
**Psychoactive**



**Not Poisonous**



**Poinsettia**  
***Euphorbia pulcherrima***



# Poisonous Plants Common in Arizona Gardens and Homes

12/9/2019



# Poisonous Plants Common in Arizona Gardens and Homes

12/9/2019





# Poisonous Plants Common in Arizona Gardens and Homes

12/9/2019

Daily Mail.com

## Murder by heartbreak grass: Was Russian exile who dropped dead at Surrey mansion a victim of the nearest thing to a perfect poison?

- Alexander Perepilichny, 44, collapsed and died while out jogging in 2012
- Tycoon somehow ingested Gelsemium, a toxic plant that grows in China
- There are claims he was murdered by assassins using 'heartbreak grass'

By ANDREW MALONE FOR THE DAILY MAIL

PUBLISHED: 19:23 EST, 19 May 2015 | UPDATED: 02:51 EST, 20 May 2015

## Russian Mafia whistleblower poisoned by a plant called Heartbreak Grass

Police deny covering up death of Alexander Perepilichny



**'Heartbreak grass' was used to kill Chinese tycoon Long Liyuan.  
It was administered during lunch in his favourite dish, slow-boiled cat stew.**



*Heartbreak grass*  
*Gelsemium elegans*

Gelsemium species contains two potent alkaloids, Gelseminine and Gelsemine.

– similar to strychnine

Acts primarily on the anterior cornus of grey matter of the spinal cord causing respiratory arrest and death.

# Poisonous Plants Common in Arizona Gardens and Homes

12/9/2019



**Carolina Jessamine**  
*Gelsemium sempervirens*

**Heartbreak grass**  
*Gelsemium elegans*

**Rankin's trumpet flower  
swamp jessamine**  
*Gelsemium rankinii*



© wd apus 2015  
wdepus@gmail.com



**Corral Bean**  
*Erythrina species*

All parts of the plant and especially  
the red seeds are poisonous  
Toxic alkaloids cause paralysis



# Poisonous Plants Common in Arizona Gardens and Homes

12/9/2019



# Poisonous Plants Common in Arizona Gardens and Homes

12/9/2019



*Brunfelsia pauciflora*  
'Yesterday-today and tomorrow'

Toxicity  
Seizures  
Depression  
Hypotension  
Paralysis

**Kalanchoes**  
Crassulaceae  
Toxin - Cardiotoxic bufadienolides

*Kalanchoe thyrsiflora*      *Kalanchoe blossfeldiana*





# Poisonous Plants Common in Arizona Gardens and Homes

12/9/2019



**Kalanchoe spp.**



**Chinese/Japanese Bamboo**  
*Nandina domestica*

*Cyanogenic glycosides*  
*Respiratory depression*  
*Seizures in dogs*



# Poisonous Plants Common in Arizona Gardens and Homes

12/9/2019



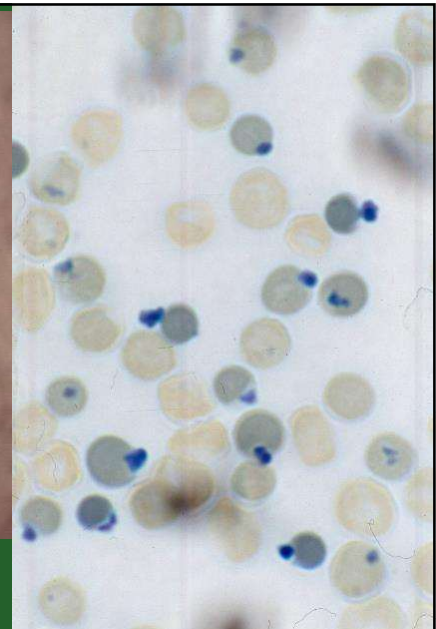


# Poisonous Plants Common in Arizona Gardens and Homes

12/9/2019



**Onions**  
*Allium species*



**Onions - *Allium cepa***

N-propyl disulfide - toxic to **cats**, dogs, livestock

# Poisonous Plants Common in Arizona Gardens and Homes

12/9/2019



**Wisteria**  
*Wisteria sinensis*  
*All parts are toxic*  
*Gastroenteritis*



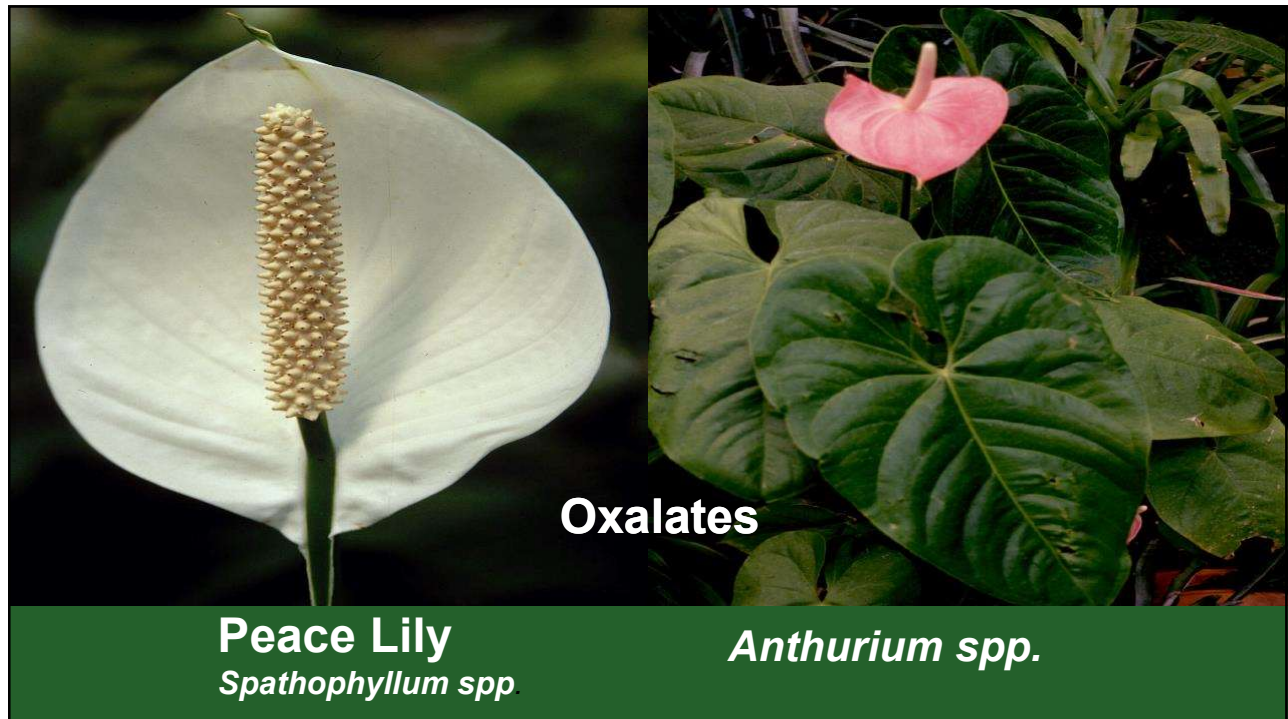
# Poisonous Plants Common in Arizona Gardens and Homes





# Poisonous Plants Common in Arizona Gardens and Homes

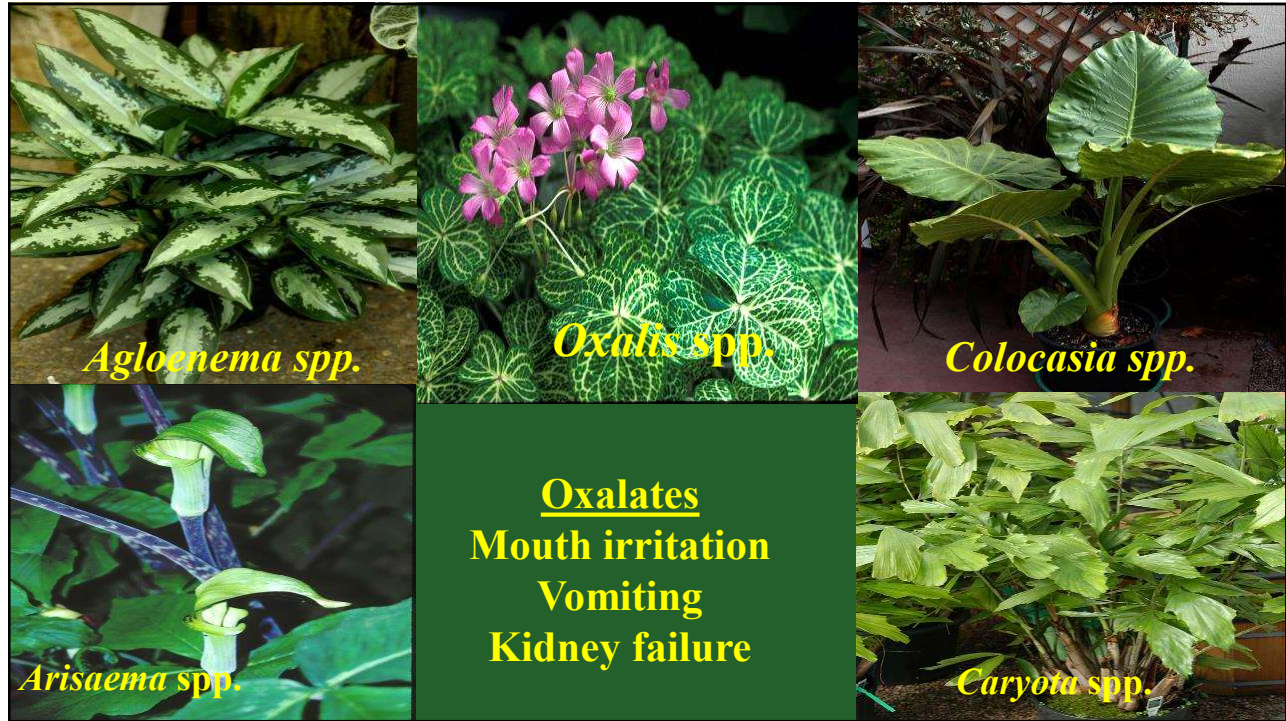
12/9/2019





# Poisonous Plants Common in Arizona Gardens and Homes

12/9/2019



What is the most poisonous plant cats are commonly exposed to in households?



# Poisonous Plants Common in Arizona Gardens and Homes



Easter lily  
*Lilium longiflorum*



Tiger lily  
*Lilium tigrum*



**All *Lilium* species are toxic to cats  
until proven otherwise.**



# Poisonous Plants Common in Arizona Gardens and Homes

12/9/2019



*Day Lilies*  
*Hemoracallis species*  
*Poisonous to cats*



**Cats are highly susceptible**  
**Dogs are not!**

**Toxin unknown**  
**Leaves and flowers are toxic**

**3 clinical phases**  
**Anorexia, salivation, vomiting,**  
**depression.**

**Polyuria leading to dehydration.**

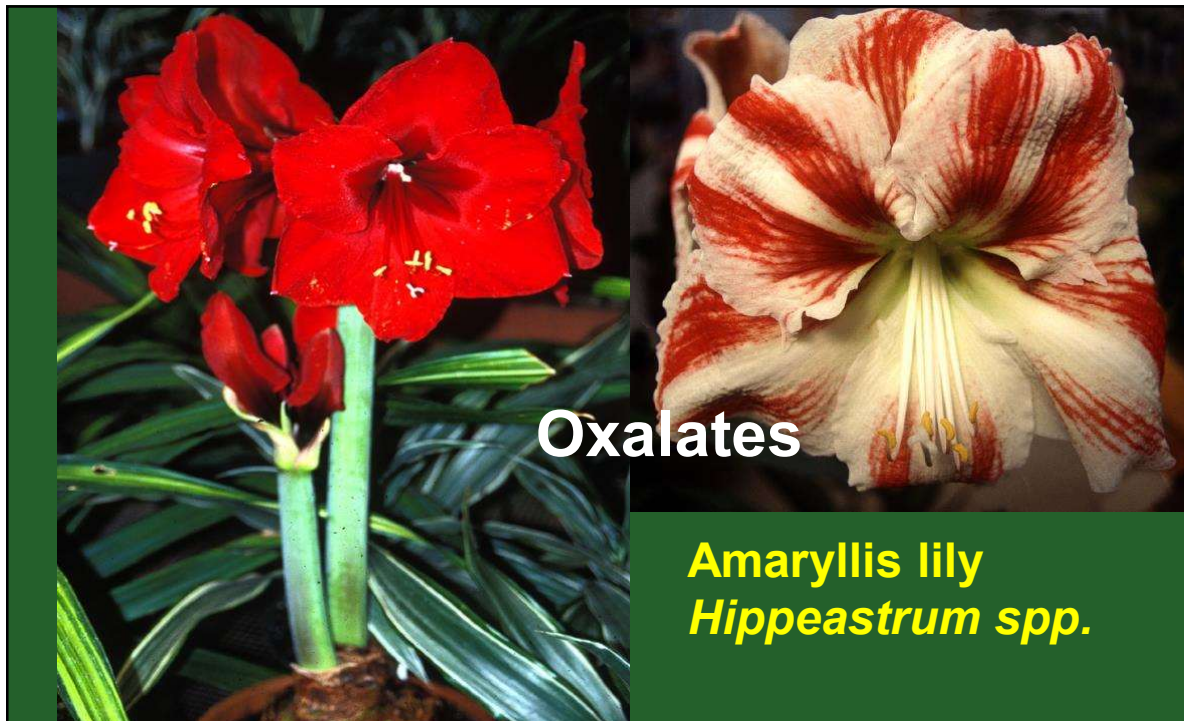
**Acute kidney failure**  
**Death.**

# Poisonous Plants Common in Arizona Gardens and Homes

12/9/2019



**Plant Bulbs  
are always a  
risk especially  
to dogs.**

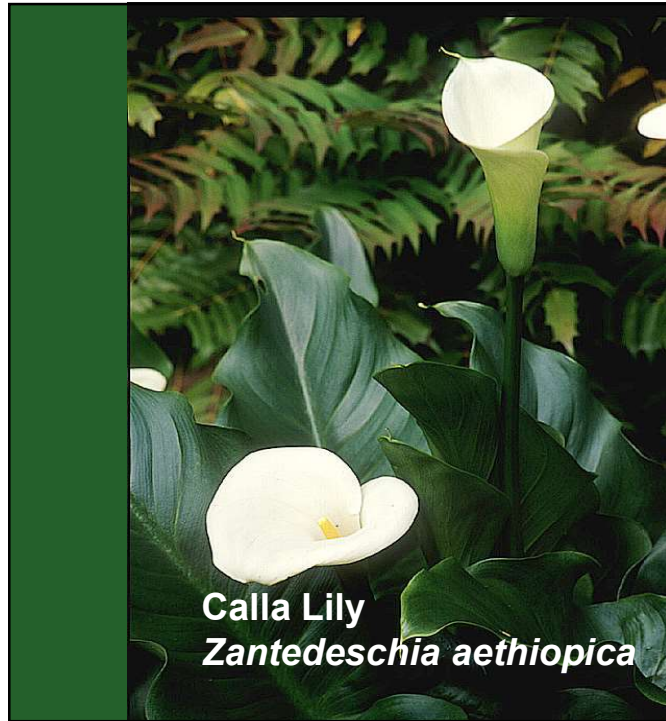


**Oxalates**

**Amaryllis lily  
*Hippeastrum spp.***



# Poisonous Plants Common in Arizona Gardens and Homes



**Oxalates**  
**Mouth irritation**  
**Vomiting**  
**Kidney failure**



**Clivia lily**  
*Clivia miniata*  
(Amaryllidaceae)



# Poisonous Plants Common in Arizona Gardens and Homes

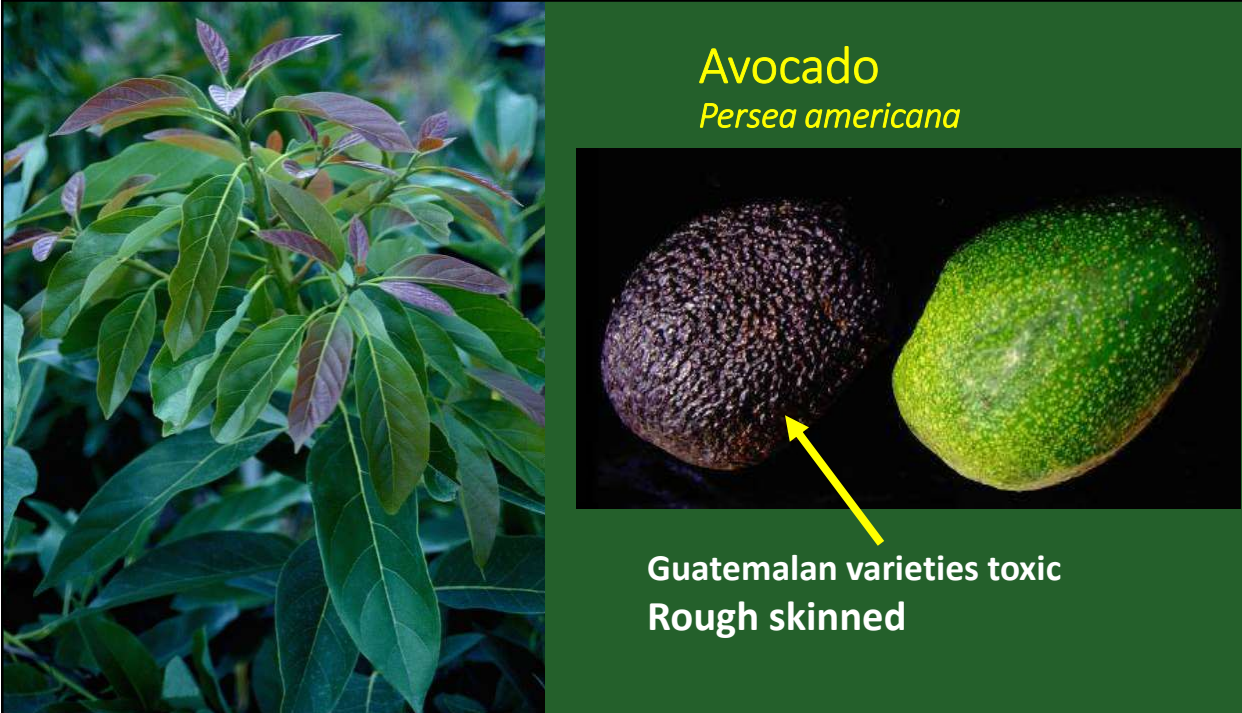
12/9/2019



*Clivia miniata*

Salivation  
Vomiting  
Diarrhea  
Hypotension  
Depression

A photograph of a cluster of bright orange Clivia miniata flowers with yellow stamens, set against a dark background. The plant's large, green, strap-like leaves are visible in the background.



**Avocado**  
*Persea americana*


Guatemalan varieties toxic  
Rough skinned

A photograph of an avocado plant with green and reddish-purple leaves on the left. On the right, two avocados are shown: one with a dark, rough, bumpy skin and one with a smooth, green skin. A yellow arrow points from the text 'Rough skinned' to the dark-skinned avocado.



# Poisonous Plants Common in Arizona Gardens and Homes

12/9/2019



The image shows a branch of an avocado plant with green and reddish-purple leaves. Below it, a close-up shows two halves of a ripe avocado with the pit removed, and a whole green avocado.

- Toxin - Persin  
Inhibits Na/K+ ATPase?
- Leaves toxic  
Ripe fruit not toxic
- Horses, goats, cattle  
Birds, rabbits
- Myocardial necrosis  
Horses – edema head/neck  
Sterile mastitis – necrosis of  
mammary epithelium
- Sudden death

**Plumeria**  
***Plumeria obtusa***



The image shows two clusters of Plumeria flowers. The left cluster consists of white flowers with yellow centers, and the right cluster consists of bright pink flowers with yellow centers.

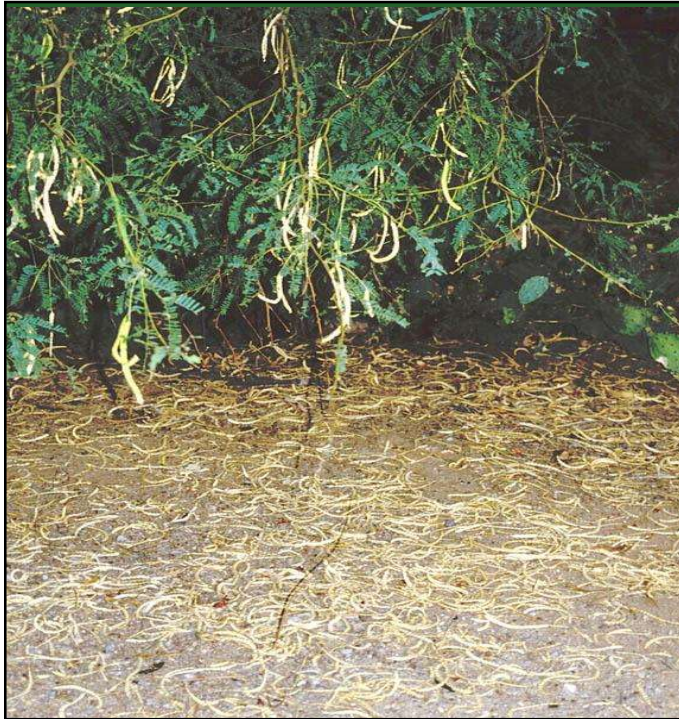
Milky sap is an irritant.  
- Salivation, Diarrhea

Cardiotoxic



# Poisonous Plants Common in Arizona Gardens and Homes

12/9/2019



**Mesquite**  
*Prosopis spp.*

Phytobezoar



**China berry**  
*Melia azadirach*





# Poisonous Plants Common in Arizona Gardens and Homes

12/9/2019

## China berry *Melia azadarach*



**Meliatoxins**  
**Sudden death**

**Less acute signs -**  
**Vomiting, diarrhea,**  
**Neurologic signs**  
**Paralysis**

## Oak (*Quercus spp.*)

**Gallotannins**

**Kidney failure**



# Poisonous Plants Common in Arizona Gardens and Homes

12/9/2019



*Yew – Taxus species*



*Yew - Taxus japonicus*  
Cardiotoxic alkaloid Taxine





# Poisonous Plants Common in Arizona Gardens and Homes

12/9/2019

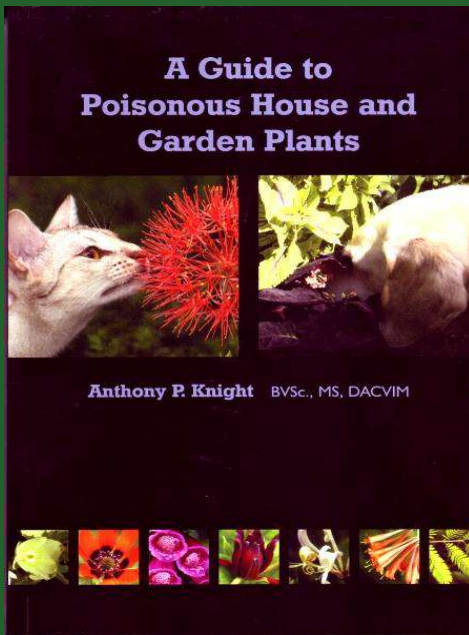


*Zephyranthes grandiflora*   *Kallstroemia grandiflora*   *Erythrina flabelliformis*

Southeastern Arizona Wildflowers  
and the Plants of the Sonoran Desert

<http://www.fireflyforest.com/flowers/category/poisonous-plants>

USDA Plant Database



Available through:  
Teton New Media  
P.O. Box 4833  
Jackson  
Wyoming 83001-9965

Toll free 877 306 9793

[www.csuvth.colostate.edu/poisonous\\_plants](http://www.csuvth.colostate.edu/poisonous_plants)

# Poisonous Plants Common in Arizona Gardens and Homes

12/9/2019

## Thank You



Coral Bean – *Erythrina* spp.