

A close-up photograph of several large, vibrant pink flowers with five petals each. The flowers are set against a dark background, and some green foliage is visible at the bottom. The overall image has a soft, slightly blurred quality.

2014 & 2015
Sakata Ornamentals
Catalog

SAKATA[®]



New! ColorMax the next
BIG thing in violas!

SAKATA[®]



Welcome

Sakata has been bringing forth innovative varieties for many years—over 100, in fact! Some of our earliest breakthroughs like Majestic Giants pansies are still leading the market today. And, our revolutionary SunPatiens® impatiens and SuperCal® petunias are fast becoming mainstays in the garden. But, we can never rest on our laurels—that’s why we’re so excited to introduce our new line-up, including the all-new ColorMax viola and Danessa primula series—plus, loads of new color additions to existing series. Check out our new varieties on pages 6 and 7!

Peruse the entire catalog and learn more about our complete offering. This year, you’ll see we have it organized into three main sections: SEED, VEGETATIVE and VEGETABLES Within these sections all series are alphabetized by their crop names and further identified with the following usage icons:

B = Bedding **C** = Cut Flower **P** = Potted Crop

We hope you find our catalog easy to navigate and full of the information you need to succeed. Thank you for your business and we look forward to serving you in the future.

Your Sakata Team

We’re saving trees and resources by creating a two-year catalog. Keep this catalog for 2014 and 2015. Then, look forward to your 2015 supplement next year!

SeedIndex

AGERATUM

Blue Horizon8

ANEMONE

Harmony8

ASTER

Bonita9

Matsumoto10

Serenade11

BEGONIA

Ambassador12

Senator12

Emperor13

Fortune14

BELLIS

Galaxy15

CALCEOLARIA

Dainty16

Golden Bunch16

CALENDULA

Calypso17

CAMPANULA

Appeal17

Champion18

Champion Pro19

CARNATION

Can Can20

Lillipot20

CELOSIA

Century21

Kimono22

Prestige23

Chief23

CINERARIA

Satellite24

COLEUS

Fairway25

Superfine Rainbow25

DELPHINIUM

Candle26

DIANTHUS

Diamond27

FLOWERING CABBAGE

Osaka28

FLOWERING KALE

Nagoya28

GERBERA

Festival Simplified29

Festival30

Festival Mini32

Festival Spider32

Durora32

GLOXINIA

Avanti33

Brocade33

Multibells34

GODETIA

Satin35

Grace35

GOMPHRENA

Gnome36

GYPSOPHILA

Gypsy36

HYPOESTES

Confetti Compact37

Confetti XL37

IPOMOEA

Sun Smile38

LISIANTHUS

Borealis39

Echo39

Excalibur40

Mariachi®41

Mariachi® Grande White41

Piccolo 1 & 242

Rosita® 143

Rosita® 2 & 344

Rosanne 145

Wonderous45

Mermaid45

MIMULUS

Mystic46

ORNAMENTAL PEPPER

Treasures Red46

PANSY

Grandio47

Majestic Giants II48

Crown49

Blueberry Thrill49

Wine Flash49

Dynamite50

Supreme51

Ultima51

PETUNIA

Explorer52

Hulahoop53

Merlin53

PLATYCODON

Astra54

Sentimental Blue54

POPPY

Wonderland55

PORTULACA

Sunseeker55

PRIMULA

Danova56

Danessa58

Daniella59

Delight59

Pageant60

Rosanna61

Prima61

SuperNova62

Fire63

SHASTA DAISY

Snow Lady63

SNAPDRAGON

Candy Showers64

Sonnet66

Speedy Sonnet67

Floral Showers68

Admiral69

Calima69

STOCK

Cheerful70

Mid Cheerful70

Iron71

Quartet72

SUNFLOWER

Sunbright73

Sunbright Supreme73

Vincent®74

TORENIA

Little Kiss75

VINCA

Victory76

VIOLA

ColorMax77

Rebelina78

ZINNIA

Profusion79

Profusion Double80

PLUS...

NEW VARIETIES6

VEGETABLES98

SEED PRODUCT FORMS99

SNEAK PEEKBack Cover

Vegetative Index

P

POTTED PLANTS AT-A-GLANCE

BEGONIA
Emperor
CALCEOLARIA
Dainty
CAMPANULA
Appeal
CARNATION
Can Can
Lillipot
CINERARIA
Satellite
GERBERA
Festival Simplified
Festival
Festival Mini
Festival Spider
Durora
GLOXINIA
Avanti
Brocade
Multibells
GODETIA
Satin
HYPOESTES
Confetti Compact
IPOMOEA
Sun Smile
LISIANTHUS
Mermaid
ORNAMENTAL PEPPER
Treasures Red
PLATYCODON
Astra
Sentimental Blue
PRIMULA
Danova
Rosanna
Prima

C

CUT FLOWERS AT-A-GLANCE

AGERATUM
Blue Horizon
ASTER
Bonita
Matsumoto
Serenade
CAMPANULA
Champion
Champion Pro
CELOSIA
Chief
DELPHINIUM
Candle
GODETIA
Grace
LISIANTHUS
Borealis
Echo
Excalibur
Flamenco
Mariachi®
Mariachi® Grande White
Piccolo 1, 2
Rosita® 1, 2 & 3
Rosanne
Wonderous
SNAPDRAGON
Admiral
Calima
STOCK
Cheerful
Mid Cheerful
Iron
Quartet
SUNFLOWER
Sunbright
Sunbright Supreme
Vincent®

CALIBRACHOA

Calipetite®81

COLEUS

Burgundy Wedding Train82
Chocolate Drop82
Emerald & Snow82
Lava Rose82
Strawberry Drop82
The Flume82

CROSSANDRA

Orange Marmalade82

GOMPHRENA

Pinball™83

IMPATIENS

SunPatiens®84

MECARDONIA

Magic Carpet™89

NEMESIA

Enchanting™89

OSTEOSPERMUM

Cape Daisy™90
Crescendo™90
Side Show™91

OXALIS

Lucky91

PETUNIA

SuperCal®92
Supertunia®95
Blue Star96
Rose Star96
Pink Radiance96
Violet Bouquet96

PORTULACA

Summer Joy™97
Sundance™97



For detailed growing
information, visit
www.sakataornamentals.com

SEED

New for 2014

ASTER

Bonita Page 9

Blue	Rose
Light Blue	Scarlet
Pink	White

CAMPANULA

Appeal Page 17

Pink

CARNATION

Can Can Page 20

Rose

PANSY

Grandio Page 47

Masquerade	Rose with Blotch
------------	------------------

Majestic Giants II Page 48

Clear White	Autumn Mix
Clear Purple	Clear Mix

PRIMULA

Danessa Page 58

Apricot with Rose Eye	Pink with Rose Eye
Blue	Rose Bicolor
Burgundy	Scarlet
Golden Shades	White
Pink Shades	Mix

SNAPDRAGON

Candy Showers Page 65

White

VIOLA

ColorMax Page 77

Berry Pie	Popcorn
Clear Orange	Purple Glow
Clear Purple	Rose with Blotch
Clear Yellow	Yellow Jump Up
Icy Blue	Mix
Lemon Splash	



Majestic Giants II Clear White



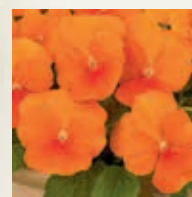
Majestic Giants II Clear Purple



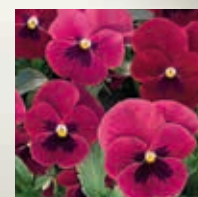
Danessa Scarlet



Berry Pie



Clear Orange



Rose w/Blotch



ColorMax Icy Blue



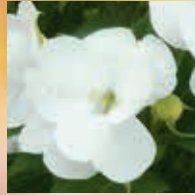
SunPatiens Spreading Scarlet Red



Compact Pink



Compact Royal Magenta



Spreading Clear White



Spreading Shell Pink

VEGETATIVE

New for 2014

CALIBRACHOA

Calipetite® Page 81
Mid Blue

IMPATIENS

SunPatiens® Page 84

Compact Pink

Compact Royal Magenta

Spreading Clear White

Spreading Scarlet Red

Spreading Shell Pink

PETUNIA

SuperCal® Page 92

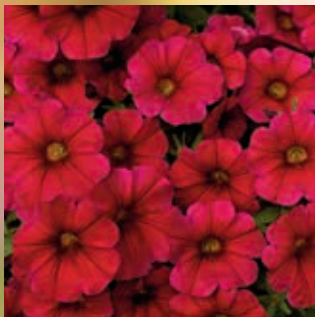
Cherry Improved

Grape

Salmon Glow



SuperCal Salmon Glow



SuperCal Cherry Improved



SuperCal Grape

New Petunias

 Page 96

Blue Star

Pink Radiance

Rose Star

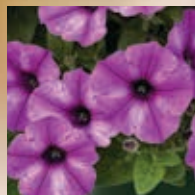
Violet Bouquet



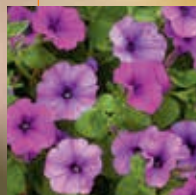
Blue Star



Pink Radiance



Rose Star



Violet Bouquet

Blue Horizon

F1 *Ageratum houstonianum* | C

- The first F1 triploid ageratum for cut flower cultivation
- Larger blooms than traditional ageratum
- Very vigorous and easy to cultivate
- Tall growing, with sturdy stems and numerous branches

MINIMUM GERM: 90%
SEED FORM: Standard, Pelleted
CROP TIME: Summer 12 Weeks, Winter 15 Weeks
STEM LENGTH: 30"
SPACING: 4 x 4"
COLORS / MIXES: 1 / 0



Blue Horizon

Harmony

Anemone coronaria | B

- The first choice for many perennial growers worldwide
- A superb cold crop for premium pots in early spring
- Combine with pansies, dianthus, bellis and poppies for spectacular color bowls
- For perennial plant sales, transplant to a protected garden site to naturalize

MINIMUM GERM: 80%
SEED FORM: Raw
CROP TIME: Spring 19 – 20 weeks
CONTAINER SIZE: 4", Gallons
PLANT HEIGHT: 6 – 8"
PLANT WIDTH: 5"
COLORS / MIXES: 5 / 1



Blue



Orchid



Pearl



Scarlet



White



Mix

For detailed growing information, visit
www.sakataornamentals.com



Blue PVPAF SAKOST049

NEW



Light Blue

NEW



Pink PVPAF SAKOST046

NEW



Rose

NEW



Scarlet

NEW



White PVPAF SAKOST047

NEW

New Series! Bonita

Callistephus chinensis | **C** **P**

- Beautiful, fully-double pompon flowers color completely
- Flowers are held at a perfect angle for maximum impact
- No need to remove the center flower bud, but stem presentation is better if this bud is removed
- Can be grown as a pot crop using modified culture
- Fusarium tolerant

MINIMUM GERM: 80%
SEED FORM: Raw
CROP TIME: 15 Weeks
STEM LENGTH: 30 – 36"
SPACING: 4 x 5"
COLORS / MIXES: 6 / 1 (Mix not shown)



Matsumoto

Callistephus chinensis | ©

- Don't be fooled by cheap copies, this is the REAL Matsumoto!
- Easy to program and stem height can be manipulated with various growing techniques
- Strong, long stems with an upright flowering habit
- Production cycle is approximately 14 weeks in spring or when produced with day length manipulation
- Fusarium tolerant

MINIMUM GERM: 80%
SEED FORM: Raw
CROP TIME: 14 Weeks
STEM LENGTH: 30 – 36"
SPACING: 4 x 5"
COLORS / MIXES: 10 / 1



Yellow



Apricot



Blue



Blue Tipped White



Light Blue



Pink



Red



Rose



Scarlet



White



Mix

Serenade

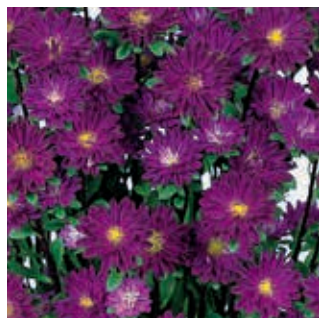
Callistephus chinensis | **C**

- Offers a spray habit with an abundance of semi-double flowers on a single stem
- Production cycle is approximately 14 weeks in spring or when produced with day length manipulation
- Fusarium tolerant

MINIMUM GERM: 80%
SEED FORM: Raw
CROP TIME: 14 Weeks
STEM LENGTH: 30 – 36"
SPACING: 4 x 5"
COLORS / MIXES: 9 / 1



Scarlet US 200000282



Blue



Blue Tipped White US 200000277



Deep Rose



Red



Rose US 200000281



Rose Tipped White US 200000280



White



Yellow



Mix

Ambassador & Senator

F1 Begonia semperflorens | **B**

- Excellent seed quality, together with a compact habit, high uniformity and a tight blooming window, make Ambassador and Senator super reliable in production
- The perfect balance of earliness in the pack and vigor in the garden
- Reliable substitute for shade impatiens if downy mildew is a problem

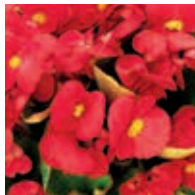
MINIMUM GERM:	90%
SEED FORM:	Raw, Pelleted
CROP TIME:	Spring to Summer 11 – 12 Weeks
CONTAINER SIZE:	Packs, 4"
PLANT HEIGHT:	12"
PLANT WIDTH:	10"
AMBASSADOR COLORS / MIXES:	8 / 1
SENATOR COLORS / MIXES:	6 / 1

Ambassador

- A beautiful green-leaved series featuring the best Scarlet on the market



Bicolor



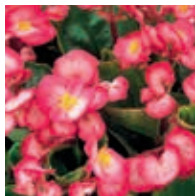
Coral



Pink



Rose



Rose Blush



Scarlet



Soft Pink



White



Mix

Senator

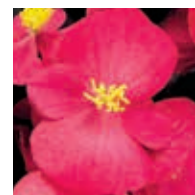
- A bronze-leaved series featuring interesting contrast between flower and foliage



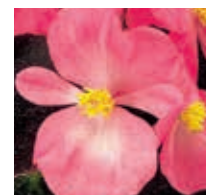
Mix



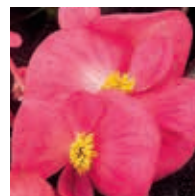
Bicolor



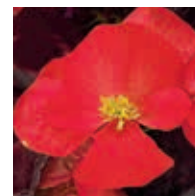
Deep Rose



Pink



Rose



Scarlet



White



Pink



Red



Rose



Soft Pink



White



Mix

Emperor

F1 Begonia semperflorens | **B** **P**

- Earliest series on the market—sow 8 – 12 days later and save energy costs
- An unbeatable pot performer, as well as an excellent landscape product when grown as an 1801
- Uniform flowering window, resulting in a quick turn
- Slightly more vigorous and taller than Ambassador

MINIMUM GERM: 90%
SEED FORM: Raw, Pelleted
CROP TIME: Spring to Summer 11 – 12 Weeks
CONTAINER SIZE: Packs, 4"
PLANT HEIGHT: 14"
PLANT WIDTH: 12"
COLORS / MIXES: 5 / 1

Fortune

F1 Begonia tuberhybrida | **B**

- The earliest tuberous begonia on the market—sow later and save costs!
- Uniform and well-branched, the compact habit requires little or no growth regulators and is more manageable in shipping

MINIMUM GERM: 85%
SEED FORM: Raw, Pelleted
CROP TIME: Spring 15 – 19 Weeks
CONTAINER SIZE: 5", Baskets
PLANT HEIGHT: 6 – 9"
PLANT WIDTH: 6 – 8"
COLORS / MIXES: 14 / 1



Apricot Orange Shades



Coral Shades



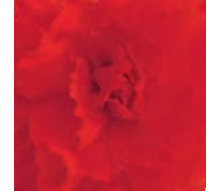
Deep Rose



Golden Shades



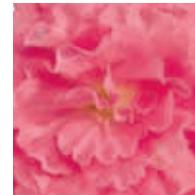
Golden w/ Red Back



Orange Shades



Peach Shades



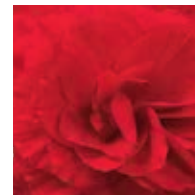
Pink



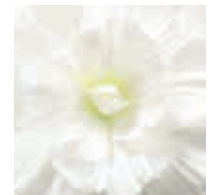
Rose



Salmon Rose



Scarlet



White



White w/ Rose Back



Yellow



Mix



Red US 9800005



Rose US 9800006



White US 9800007



Mix

Galaxy **B**

Bellis perennis annua | **B**

- The preferred series for perennial growers!
- Compact plants are ideal for pots and packs
- Cold temperatures are not required to initiate flowering
- A cost effective crop that can be sown in winter for spring sales or in summer for fall sales

MINIMUM GERM: 85%
SEED FORM: Pelleted
CROP TIME: Spring to Fall 12 – 14 Weeks
CONTAINER SIZE: Packs, 4"
PLANT HEIGHT: 5"
PLANT WIDTH: 5"
COLORS / MIXES: 3 / 1



Galaxy Red

Golden Bunch

F1 Calceolaria rugosa | **B**

- Bred for smaller leaves and a compact habit so it can be produced as a bedding plant in moderate summer climates
- Ideal for high-density production
- Suitable for production in 3 – 4-in. pots

MINIMUM GERM: 80%
SEED FORM: Raw
CROP TIME: Spring 18 Weeks
CONTAINER SIZE: 6"
PLANT HEIGHT: 10"
PLANT WIDTH: 8"
COLORS / MIXES: 1 / 0



Golden Bunch

Dainty

F1 Calceolaria x hybrida | **P**

- Excellent series uniformity
- Compact growth and good disease tolerance make for very manageable 3.5 – 4-in. pot production
- Easier to handle and ship with minimum damage to leaves

MINIMUM GERM: 85%
SEED FORM: Pelleted
CROP TIME: Winter to Spring 16 – 18 Weeks
CONTAINER SIZE: 4"
PLANT HEIGHT: 7"
PLANT WIDTH: 6"
COLORS / MIXES: 4 / 1



Bronze



Red



Red & Yellow



Yellow with Spots



Mix

For detailed growing information, visit
www.sakataornamentals.com

Calypso

Calendula officinalis nana | **B**

- Ideal compact plant habit for pack and pot sales
- Brightly-colored blooms on top of vigorous plants are well suited for long life in garden beds and containers
- Planted in spring or fall, Calypso continues to flower in milder climates

MINIMUM GERM: 80%
SEED FORM: Raw
CROP TIME: Fall to Spring 12 – 13 Weeks
CONTAINER SIZE: Packs, 4"
PLANT HEIGHT: 10 – 12"
PLANT WIDTH: 6 – 8"
COLORS / MIXES: 2 / 0



Orange with Black Center



Yellow with Black Center



Calypso

New Color! Appeal

F1 Campanula medium nanum | **P**

- A high-value pot or patio crop bursting with unique, long-lasting flowers
- Sow August to February for sales in January through June
- Does not require cold to initiate flowering
- Long day responsive—can be forced year-round; requires photoperiod manipulation to ensure proper growth

MINIMUM GERM: 80%
SEED FORM: Pelleted
CROP TIME: Winter to Spring 19 Weeks
CONTAINER SIZE: 5 – 6"
PLANT HEIGHT: 8 – 10"
PLANT WIDTH: 8"
COLORS / MIXES: 2 / 0



Deep Blue



Pink

NEW



Appeal Deep Blue and Pink

Champion & Champion Pro

F1 Campanula medium annum | 

- Easy and economical to produce with moderate temperatures (55°F/13°C) and photoperiod manipulation
- Sow mid-August to mid-September for flowering late December to June
- Hard flower petals hold up well in shipping and provide excellent vase life

MINIMUM GERM:	80%
SEED FORM:	Pelleted
CHAMPION CROP TIME:	Winter to Spring 19 Weeks
CHAMPION PRO CROP TIME:	Winter to Spring 18 Weeks
STEM LENGTH:	36 – 40"
SPACING:	5 x 5"
CHAMPION COLORS / MIXES:	4 / 0
CHAMPION PRO COLORS / MIXES:	5 / 1

Champion

- Standard campanula cut flower with large flower cups
- Flowers 19 weeks after sowing



Blue



Lavender



Pink



White



Pink and White



Mix



Deep Blue



Lavender



Light Pink



Pink

Champion Pro

- Bouquet type with smaller, more abundant flowers and short peduncles
- Thinner, flexible stems weigh less reducing transportation costs
- Flowers a week earlier than Champion



White

New Color!

Can Can

F1 *Dianthus caryophyllus* | **B** **P**

- Offers a delightful spicy fragrance and an abundance of flowers from mid-spring through summer
- Ideal for premium pot production or the garden
- Cool crop requiring little or no heat
- Excellent basal branching and strong stems

MINIMUM GERM: 80%
SEED FORM: Raw
CROP TIME: Spring to Summer 20 – 24 Weeks
CONTAINER SIZE: 6", Gallons
PLANT HEIGHT: 12"
PLANT WIDTH: 10"
COLORS / MIXES: 2 / 1



Cocktail Party



Scarlet



Rose



Lillipot

F1 *Dianthus caryophyllus nanus* | **P**

- Versatile! Ideal for pot sales and patio containers
- This annual carnation is genetically dwarf, staying compact without pinching or PGRs
- Cool crop requiring little or no heat
- Flowers continuously throughout the summer

MINIMUM GERM: 80%
SEED FORM: Raw
CROP TIME: Winter to Spring 20 – 28 Weeks
CONTAINER SIZE: 5 – 6"
PLANT HEIGHT: 8 – 10"
PLANT WIDTH: 8 – 10"
COLORS / MIXES: 0 / 1



Lillipot Mix



Fire



Red



Rose



Yellow

Century

Celosia argentea plumosa | **B**

- Extra early and easy to grow
- Extremely heat tolerant for summer programs
- Can be used in containers, the garden or for home garden cut flowers
- Can also be used for commercial cut flower with tight spacing of on 4-inch centers

MINIMUM GERM: 85%
SEED FORM: Raw
CROP TIME: Spring to Summer 9 – 10 Weeks
CONTAINER SIZE: Packs, 4"
PLANT HEIGHT: 12 – 16"
PLANT WIDTH: 8"
COLORS / MIXES: 4 / 1



Mix



Kimono

Celosia argentea plumosa nana | **B** **P**

- A high density crop suitable for both pots and packs—no PGRs required
- Recommended for multi-sowing to create colorful bowls and containers
- Quick turnover—5 week crop time!
- Use to extend the season—perfect for mid-summer and early fall sales

MINIMUM GERM: 80%
SEED FORM: Raw
CROP TIME: Spring to Summer 9 – 10 Weeks
CONTAINER SIZE: Packs, 4"
PLANT HEIGHT: 6 – 8"
PLANT WIDTH: 5"
COLORS / MIXES: 8 / 1



Cherry Red



Cream



Orange



Red



Rose



Salmon Pink



Scarlet



Yellow



Mix

For detailed growing information, visit
www.sakataornamentals.com

Prestige

Celosia argentea cristata | **B**

- Grows vigorously under hot, humid conditions and produces large, vivid flower heads—covering the plant from top to bottom
- Heat tolerant and carefree in the garden
- Good cut flower for home gardens

MINIMUM GERM: 85%
SEED FORM: Raw
CROP TIME: Spring to Summer 9 – 10 Weeks
CONTAINER SIZE: Packs, 4"
PLANT HEIGHT: 12 – 24"
PLANT WIDTH: 8"
COLORS / MIXES: 1 / 0



Scarlet

Chief

Celosia argentea cristata | **C**

- Can be direct sown in the cut flower bed or field and is very well suited to production in areas with high temperatures
- Dense plantings produce strong stems and quality cuts
- Very uniform in growth pattern

MINIMUM GERM: 85%
SEED FORM: Raw
CROP TIME: Spring to Summer 9 – 10 Weeks
STEM LENGTH: 24"
SPACING: 4 x 4"
COLORS / MIXES: 6 / 1 (Persimmon not shown)



Carmine



Fire



Gold



Red



Rose



Mix

Satellite

F1 Pericallis x hybrida | P

- An early-flowering grandiflora series in a vibrant color range
- Leaves are relatively small for high density production
- Economical crop to produce due to reduced heat requirement

MINIMUM GERM: 85%
SEED FORM: Raw
CROP TIME: Winter to Spring 18 Weeks
CONTAINER SIZE: 6"
PLANT HEIGHT: 10"
PLANT WIDTH: 8"
COLORS / MIXES: 5 / 1



Cerise Shades



Deep Red Shades



Purple & Blue Shades



Rose & Pink Shades



Sky Blue Shades



Mix

Fairway

Solenostemon x hybrida | **B**

- Extra dwarf with excellent basal branching
- Very late flowering for improved shelf-life
- Option for year-round production

MINIMUM GERM: 80%
SEED FORM: Raw
CROP TIME: Spring to Summer 9 Weeks
CONTAINER SIZE: 4", Packs
PLANT HEIGHT: 8"
PLANT WIDTH: 6"
COLORS / MIXES: 6 / 1



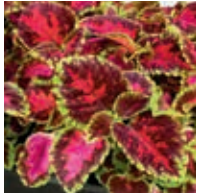
Mosaic



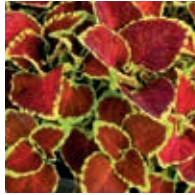
Orange



Red Velvet



Rose



Ruby



Yellow



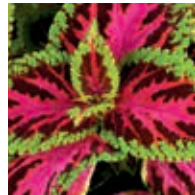
Mix

Superfine Rainbow

Solenostemon x hybrida | **B**

- Excellent garden performance with large, vividly colored leaves
- Broader leaves and taller than Fairway
- Very late flowering

MINIMUM GERM: 80%
SEED FORM: Raw
CROP TIME: Spring to Summer 12 Weeks
CONTAINER SIZE: 4"
PLANT HEIGHT: 14"
PLANT WIDTH: 10"
COLORS / MIXES: 5 / 1



Color Pride



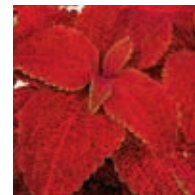
Festive Dance



Multicolor



Red Velvet



Volcano



Mix

Candle

F1 Delphinium elatum | ©

- Ideally suited for winter production and will flower with a minimum of 10 hours of day length
- Suitable for tunnel, greenhouse and field production
- Extremely stable and especially bred for short-day production schedules
- F1 hybrid vigor guarantees good results from subsequent flushes following first harvest

MINIMUM GERM: 85%

SEED FORM: Raw

CROP TIME: Fall to Spring 16 – 18 Weeks

STEM LENGTH: 48 – 60"

SPACING: 8 x 8"

COLORS / MIXES: 3 / 0



Blue Shades



Violet Shades



White Shades

For detailed growing information, visit
www.sakataornamentals.com

Diamond

F1 Dianthus x hybrida nana | **B**

- Superb garden performance in spring and fall
- Early variety, blooming simultaneously on main and lateral stems in pots and beds
- High uniformity in plant habit and tight flower window
- When grown under long day conditions it is naturally compact and requires little or no PGRs

MINIMUM GERM: 85%

SEED FORM: Raw, Pelleted

CROP TIME: Spring to Summer 10 – 12 Weeks

CONTAINER SIZE: Packs, 4"

PLANT HEIGHT: 6"

PLANT WIDTH: 8"

COLORS / MIXES: 9 / 1



Coral



Blush Pink



Carmine Rose



Crimson Picotee



Pink



Purple



Purple Picotee



Scarlet



White



Mix

Osaka

F1 Brassica oleracea | **B**

- A colorful flowering cabbage for fall sales
- Wavy-edged leaves on tightly packed, compact heads
- Plants are vigorous and uniform

MINIMUM GERM: 95%
SEED FORM: Raw
CROP TIME: Spring to Summer 10 – 12 Weeks
CONTAINER SIZE: 6 – 8"
PLANT HEIGHT: 6"
PLANT WIDTH: 12"
COLORS / MIXES: 3 / 1



Mix



Pink



Red



White

Nagoya

F1 Brassica oleracea | **B**

- Produces colorful, highly fringed leaves and is a long-lasting kale that adds interest to fall gardens and containers
- Reducing temperature to promote leaf color is not required on the same scale as with other cultivars
- Uniform in plant habit and growth
- Responds well to PGRs

MINIMUM GERM: 95%
SEED FORM: Raw
CROP TIME: Spring to Summer 9 – 10 Weeks
CONTAINER SIZE: 4 – 5"
PLANT HEIGHT: 5"
PLANT WIDTH: 8"
COLORS / MIXES: 3 / 1



Red



Rose



White



Mix



Apricot w/ Eye



Cherry w/ Eye



Golden Yellow w/ Eye



Neon Rose w/ Eye



Orange w/ Eye



Pink Shades w/ Eye



Rose



Salmon



Scarlet w/ Eye



Yellow Semi-double



Mix

Festival Simplified

F1 Gerbera jamesonii | **B** **P**

- 10 popular colors carefully selected from the Festival series for uniformity in flowering time and habit
- Works in a range of pot sizes from 4 – 6 inches and can be grown year round
- Florist-quality blooms with high bud count at first flush
- While other series may finish faster in smaller containers, they aren't consistent and don't match the quality and reliability of our Festival Simplified assortment

MINIMUM GERM: 90%

SEED FORM: Filmcoat

CROP TIME: 16 – 18 Weeks

CONTAINER SIZE: 4 – 6"

PLANT HEIGHT: 8 – 10"

PLANT WIDTH: 6 – 8"

COLORS / MIXES: 10 / 1



Neon Rose w/ Eye

Festival

F1 Gerbera jamesonii | **B** **P**

- Offers a complete color range—something for everyone
- Works in a range of pot sizes and can be grown year round
- Boasts the highest percentage of prime-quality, marketable plants
- Multiple flowers and high bud count at time of sale increases sell through
- Also available in semi-double colors

MINIMUM GERM:	90%
SEED FORM:	Filmcoat
CROP TIME:	16 – 18 Weeks
CONTAINER SIZE:	4 – 6"
PLANT HEIGHT:	8 – 10"
PLANT WIDTH:	6 – 8"
SINGLE COLORS / MIXES:	18 / 6
SEMI-DOUBLE COLORS / MIXES:	3 / 1



Golden Yellow w/ Eye



Apricot



Apricot w/ Eye



Blush



Cherry w/ Eye



Golden Yellow w/ Eye



Lemon Yellow



Neon Rose w/ Eye



Orange



Orange w/ Eye



Peach w/ Eye



Pink Shades w/ Eye



Red w/ Eye



Rose



Salmon



Salmon Rose



Scarlet w/ Eye



White Shades



Yellow w/ Eye



Dark Eyed Mix



Fall Harvest Mix



Grower's Select Mix



Spring Bouquet Mix



Winter Holiday Mix



Mix



Semi-double Orange Shades



Semi-double Rose Shades



Semi-double Yellow Shades



Semi-double Mix

Festival Mini

F1 Gerbera jamesonii |

B **P**

- A unique product with miniature flowers on compact plants
- Highly uniform in habit and earliness
- Eye-catching in mixed containers and as gifts

MINIMUM GERM: 90%
SEED FORM: Filmcoat
CROP TIME: 14 – 16 Weeks
CONTAINER SIZE: 4"
PLANT HEIGHT: 6 – 8"
PLANT WIDTH: 6 – 8"
COLORS / MIXES: 0 / 1



Festival Mini Mix

Festival Spider

F1 Gerbera jamesonii |

B **P**

- Provides a unique flower form that stands out at retail
- Can be produced on the same production schedule as other Festival varieties
- Available in separate colors for targeted color selection

MINIMUM GERM: 90%
SEED FORM: Filmcoat
CROP TIME: 16 – 18 Weeks
CONTAINER SIZE: 5"
PLANT HEIGHT: 8 – 10"
PLANT WIDTH: 6 – 8"
COLORS / MIXES: 3 / 1



Salmon w/ Eye



Salmon Red Shades



Yellow



Mix

Durora

F1 Gerbera jamesonii |

B **P**

- An early, compact and easy to grow series with large double flowers
- Flowers age slower than other varieties—long-lasting shelf appeal
- Short production time, market 8 – 10 weeks after potting

MINIMUM GERM: 90%
SEED FORM: Filmcoat
CROP TIME: 16 – 18 Weeks
CONTAINER SIZE: 4"
PLANT HEIGHT: 6 – 8"
PLANT WIDTH: 6 – 8"
COLORS / MIXES: 0 / 1



Durora Mix

For detailed growing information, visit www.sakataornamentals.com

Avanti

F1 *Sinningia speciosa* | **P**

- The earliest single-flowered series on the market
- Bred for high-density production and successful shipping
- Flowers are held just above the foliage on short, strong stems
- Small supple leaves facilitate sleeving and shipping

MINIMUM GERM: 80%
SEED FORM: Raw, Pelleted
CROP TIME: 16 – 22 Weeks
CONTAINER SIZE: 4 – 6"
PLANT HEIGHT: 6 – 8"
PLANT WIDTH: 8 – 10"
COLORS / MIXES: 8 / 1



Scarlet



Blue



Blue w/White Edge



Lt Violet w/ Dk Throat



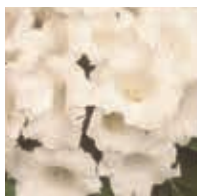
Peach Rose



Red w/White Edge



Rose Red



White



Mix

Brocade

F1 *Sinningia speciosa* | **P**

- An impressive, double-flowered series that is quite showy and ideal for gift and indoor floral sales
- Fully double flowers
- Small flexible leaves for high density production, easy sleeving and shipping

MINIMUM GERM: 80%
SEED FORM: Raw, Pelleted
CROP TIME: 20 – 24 Weeks
CONTAINER SIZE: 4 – 5"
PLANT HEIGHT: 6 – 8"
PLANT WIDTH: 6 – 8"
COLORS / MIXES: 0 / 1



Brocade Mix

Multibells

F1 *Sinningia speciosa* | P

- Offers exceptional uniformity with an incredible number of flowers—up to 40 per plant
- 10 – 14 days earlier than other gloxinia and can be produced at a higher density for increased profitability
- Short foliage results in less damage during transport

MINIMUM GERM: 80%
SEED FORM: Pelleted
CROP TIME: 14 – 20 Weeks
CONTAINER SIZE: 4 – 5"
PLANT HEIGHT: 6 – 8"
PLANT WIDTH: 6 – 8"
COLORS / MIXES: 3 / 0



Blue



Cherry



White



Satin

F1 Clarkia amoena nana | **B** **P**

- Adorned with large (2-inch) brightly-colored, long-lasting flowers
- Bred for pot performance, but can also be used as a bedding plant in cool, dry conditions
- A very compact godetia with good basal branching—responds well to PGRs

MINIMUM GERM: 85%
SEED FORM: Raw
CROP TIME: Spring 14 Weeks
CONTAINER SIZE: 4 – 5"
PLANT HEIGHT: 10 – 12"
PLANT WIDTH: 6 – 8"
COLORS / MIXES: 0 / 1



Mix

Grace

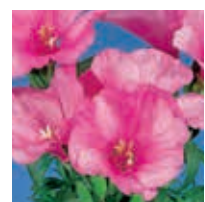
F1 Clarkia amoena | **C**

- Lateral branching produces up to 15 stems, carrying 5 or 6 solid clusters of blooms
- Suitable for high-density packing and shipping over long distances
- Grow year-round with the use of daylength manipulation
- Best grown at 60 – 65°/15 – 18°C day, 50°F/10°C night, ideal temperature should not exceed 75°F/25°C

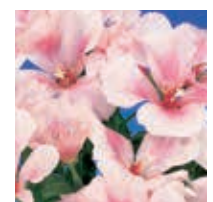
MINIMUM GERM: 85%
SEED FORM: Raw
CROP TIME: Winter to Spring 15 – 21 Weeks
STEM LENGTH: 24 – 30"
SPACING: 4 x 4"
COLORS / MIXES: 8 / 1



Lavender



Lavender w/ Eye



Pink



Red



Rose w/ Pink



Salmon



Shell Pink



White



Mix

Gnome

Gomphrena globosa | **B**

- Versatile! Ideal for hot and humid areas, but is also well suited to dry conditions
- Germinates well at high temperatures
- Quick production time (4 – 6 weeks) and ease of finishing makes this a good shoulder season item
- This extra-dwarf plant is nice in mixed containers or by itself in beds and borders

MINIMUM GERM: 85%
SEED FORM: Raw
CROP TIME: Spring to Summer 10 – 12 Weeks
CONTAINER SIZE: Packs, 4"
PLANT HEIGHT: 6 – 10"
PLANT WIDTH: 5 – 6"
COLORS / MIXES: 3 / 1 (Mix not shown)



Pink



Purple



White

Gypsy

Gypsophila muralis | **B**

- Airy flowers top graceful plants with finely textured foliage
- Can be sold in packs or pots
- Ideal for baskets and mixed containers
- White is a 2013 Fleuroselect Novelty Award winner!

MINIMUM GERM: 85%
SEED FORM: Raw, Multi-Pellet
CROP TIME: Spring to Summer 10 – 12 Weeks
CONTAINER SIZE: Packs, 4"
PLANT HEIGHT: 6"
PLANT WIDTH: 8"
COLORS / MIXES: 3 / 0



Deep Rose



Pink



White PPVAF SAKGY001

For detailed growing information, visit
www.sakataornamentals.com

Confetti Compact & Confetti XL

Hypoestes phyllostachya | **B** **P**

- A versatile, decorative foliage plant
- Perfect for year-round production
- Short production time
- Excellent shipping tolerance and shelf life



Confetti Compact

- Well suited as an indoor potted crop (try it mixed with other foliage), but can also be utilized for outdoor mixed containers and baskets in warmer shaded areas

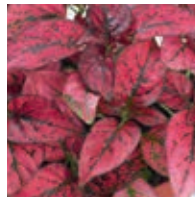
MINIMUM GERM: 90%
SEED FORM: Raw
CROP TIME: 10 – 12 Weeks
CONTAINER SIZE: Packs, 4"
PLANT HEIGHT: 4 – 6"
PLANT WIDTH: 4 – 6"
COLORS / MIXES: 5 / 1



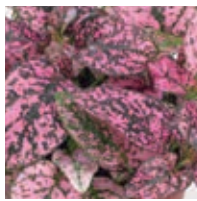
Blush Rose



Pink



Red



Rose



White



Mix

Confetti XL

- Offers a more vigorous habit than Confetti Compact and was bred especially for the bedding plant market
- Ideal for mass and border plantings in shaded areas and works well in mixed containers

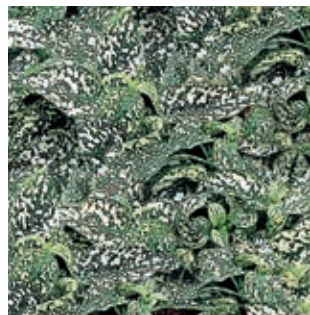
MINIMUM GERM: 90%
SEED FORM: Raw
CROP TIME: 9 – 11 Weeks
CONTAINER SIZE: Packs, 4"
PLANT HEIGHT: 8 – 10"
PLANT WIDTH: 6 – 8"
COLORS / MIXES: 4 / 1 (Mix not shown)



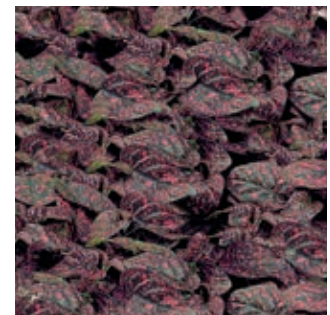
Carmine Rose



Red



White



Wine Red

Sun Smile

Ipomoea purpurea | P

- Quite unique! A dwarf plant with ornamental foliage and a mounding habit
- Ideally suited for mixed containers and hanging baskets
- Spreads approximately 12 inches in the garden

MINIMUM GERM: 80%

SEED FORM: Raw, Scarified

CROP TIME: Spring to Summer 9 – 10 Weeks

CONTAINER SIZE: 4"

PLANT HEIGHT: 4"

PLANT WIDTH: 12"

COLORS / MIXES: 4 / 0



Blue



Pink



Red



Violet



Borealis

F1 *Eustoma grandiflorum* | 

- Group 0 / Standard Double Flower
- Less blindness than with other standards on the market
- Ideal for winter harvest with high yield
- Easier to get good stem height

MINIMUM GERM: 80%
SEED FORM: Pelleted
CROP TIME: Winter 22 – 24 Weeks
STEM LENGTH: 36 – 48"
SPACING: 4 x 6"
COLORS / MIXES: 6 / 0



Blue



Apricot



Green



Pink



White



Yellow

Echo

F1 *Eustoma grandiflorum* | 

- Group I / Standard Double Flower—spray type
- The world's first 100% all double, large-flowered lisianthus for cut flower production
- Flower stalks are strong and easily support the large flowers

MINIMUM GERM: 80%
SEED FORM: Pelleted
CROP TIME: Winter to Spring 22 – 24 Weeks
STEM LENGTH: 36 – 48"
SPACING: 4 x 6"
COLORS / MIXES: 7 / 0



Blue



Champagne



Pink



Pink Picotee



Yellow



Pure White



Lavender

Excalibur

F1 *Eustoma grandiflorum* | ©

- Group II / Standard Double Flower
- Suitable for equatorial areas where temperatures are a bit higher than standard for lisianthus
- Uniform plug performance and less sensitivity to rosette
- Slightly earlier than Flamenco and Mariachi®
- Achieves sufficient height with top flowering and more usable buds for better presentation

MINIMUM GERM: 80%
SEED FORM: Pelleted
CROP TIME: Spring to Mid-Summer 22 – 24 Weeks
STEM LENGTH: 36 – 48"
SPACING: 4 x 6"
COLORS / MIXES: 4 / 0



Green



Blue Picotee



Pure White



Yellow



Excalibur Yellow

Mariachi® & Mariachi® Grande White

F1 *Eustoma grandiflorum* | 

- Group 2 & 3 / Standard Quadruple
- Extra-double, large camellia-like blooms with thick petals
- 2 – 2.75-inch rose-shaped flowers

MINIMUM GERM:	80%
SEED FORM:	Pelleted
MARIACHI CROP TIME:	Spring to Mid-Summer 22 – 24 Weeks
MARIACHI GRANDE WHITE CROP TIME:	Summer to Fall 22 – 24 Weeks
STEM LENGTH:	36 – 48"
SPACING:	4 x 6"
MARIACHI COLORS / MIXES:	10 / 0

Mariachi

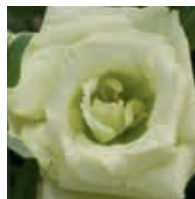
- Group 2
- Ideal for winter sowing and summer harvest
- Thick petals for long-lasting shelf life and easy transportation



Blue



Carmine



Lime Green



Misty Blue



Misty Pink



Pink



Pink Picotee



Pure White



Yellow Improved

Lavender



Mariachi Grande White

- Group 3
- Ideal for late spring sowing and fall harvest
- Flower color is ivory to clear white—higher temperatures promote clear white color



White

Piccolo 1 & 2

F1 *Eustoma grandiflorum* | ©

- The market standards for single-flowered lisianthus
- Irresistibly cute, petite blooms
- Smaller cup size and hard flower petals reduce botrytis issues during shipping
- Sturdy stems and long vase life

MINIMUM GERM:	80%
SEED FORM:	Pelleted
PICCOLO 1 CROP TIME:	Winter to Spring 22 – 24 Weeks
PICCOLO 2 CROP TIME:	Spring to Mid-Summer 22 – 24 Weeks
STEM LENGTH:	36 – 48"
SPACING:	4 x 6"
PICCOLO 1 COLORS / MIXES:	6 / 0
PICCOLO 2 COLORS / MIXES:	6 / 0

Piccolo 2

- Group 2 / Spray Single Flower
- Ideal for the summer season or for year-round production with artificial light

Piccolo 1

- Group 1 / Spray Single Flower



Apricot



Blue Rim



Lime Green



Pink Rim



Rose



Yellow



Deep Blue



Deep Rose



Lime Green



Pure White



Rose Pink



Yellow

Rosita[®] 1, 2 & 3

F1 *Eustoma grandiflorum* | 

- The Rosita[®] family, along with Excalibur, is the standard in double-flowered lisianthus
- Thick petals, top flowering and strong stems make for easy transport without botrytis problems
- Medium-sized, rose-shaped flowers
- Excellent vase life with more usable buds

MINIMUM GERM:	80%
SEED FORM:	Pelleted
ROSITA 1 CROP TIME:	Winter to Spring 22 – 24 Weeks
ROSITA 2 CROP TIME:	Spring to Mid-Summer 22 – 24 Weeks
ROSITA 3 CROP TIME:	Summer to Fall 22 – 24 Weeks
STEM LENGTH:	36 – 48"
SPACING:	4 x 6"
ROSITA 1 COLORS / MIXES:	5 / 0
ROSITA 2 COLORS / MIXES:	11 / 0
ROSITA 3 COLORS / MIXES:	3 / 0

Rosita 2 & 3 continued on next page.

Pink Picotee

Rosita 1

- Group 1 / Spray Double Flower
- Suitable for spring flowering



Blue



Green



Rose Pink



White



Rosita 2

- Group 2 / Spray Double Flower
- Suitable for spring and early summer flowering



Apricot



Blue



Green



Hot Lips



Jade



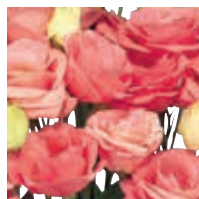
Misty Pink



Pink



Purple



Rose Pink



White



Yellow

Rosita 3

- Group 3 / Spray Double Flower
- Suitable for spring and early summer flowering



Pink



White



Yellow



Rosita 2 Hot Lips

Rosanne 1

F1 *Eustoma grandiflorum* |



- Group 1 / Standard Double Flower
- Unique colors and patterns with more usable buds
- Thick flower petals and top flowering reduce botrytis problems during transportation
- Flower stigmas do not open (no pollen is shed) providing excellent vase life

MINIMUM GERM:	80%
SEED FORM:	Pelleted
CROP TIME:	Spring to Mid-Summer 22 – 24 Weeks
STEM LENGTH:	36 – 48"
SPACING:	4 x 6"
COLORS / MIXES:	2 / 0



Brown



Green



Rosanne 1 Green

Wonderous

F1 *Eustoma grandiflorum* |



- Group 1 / Standard Single Flower
- Unique colors and patterns with more usable buds
- Thick flower petals and top flowering reduce botrytis problems during transportation
- Flower stigmas do not open (no pollen is shed) providing excellent vase life

MINIMUM GERM:	80%
SEED FORM:	Pelleted
CROP TIME:	Winter to Spring 22 – 24 Weeks
STEM LENGTH:	36 – 48"
SPACING:	4 x 6"
COLORS / MIXES:	2 / 0



Light Brown



Purple

Mermaid

F1 *Eustoma grandiflorum* |



- Genetically compact plant requires little or no PGRs
- A single-flowered series bred for pot production
- The rose-shaped buds and cupped flowers are ideal for generating impulse sales

MINIMUM GERM:	80%
SEED FORM:	Pelleted
CROP TIME:	Spring to Summer 22 – 26 Weeks
CONTAINER SIZE:	4"
PLANT HEIGHT:	6"
PLANT WIDTH:	4"
COLORS / MIXES:	2 / 0



Blue



Pink

Mystic

F1 Mimulus x hybrida | **B**

- Dwarf, highly uniform plant habit responds well to PGRs
- A cool crop that requires little or no heat
- Free flowering and compact, making it a good pack item—but it looks especially nice in hanging baskets!

MINIMUM GERM: 85%
SEED FORM: Pelleted
CROP TIME: Spring to Summer 10 Weeks
CONTAINER SIZE: Packs, Baskets
PLANT HEIGHT: 4"
PLANT WIDTH: 5"
COLORS / MIXES: 0 / 1



Mix

Treasures Red

F1 Capsicum annuum | **B** **P**

- A colorful and compact ornamental pepper that makes a fun pot plant, but also spices up mixed containers, landscape beds and borders
- Does not require cold to initiate flowering
- Fast production time with excellent uniformity
- Conical white fruits change to bright red at maturity
- Recommended for ornamental use only

MINIMUM GERM: 80%
SEED FORM: Raw
CROP TIME: 17 – 20 Weeks
CONTAINER SIZE: 4"
PLANT HEIGHT: 5"
PLANT WIDTH: 4"
COLORS / MIXES: 1 / 0



Red

For detailed growing information, visit www.sakataornamentals.com

New Colors! Grandio

F1 Viola x wittrockiana | **B**

- Large-flowered: 3.25-in. blooms
- Bred for ease of growing in today's production systems
- Compact in early sowings; less plant stretch in high heat
- Reliable for fall, winter and spring production

MINIMUM GERM: 90%
SEED FORM: Performax, Primax
CROP TIME: Fall to Spring 10 – 11 Weeks
CONTAINER SIZE: Packs, 4", Baskets
PLANT HEIGHT: 7"
PLANT WIDTH: 5"
COLORS / MIXES: 12 / 5



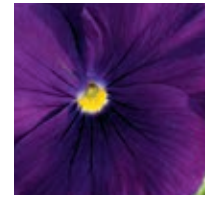
Grandio Pansies



Clear Golden



Clear Orange



Clear Purple



Clear Rose



Clear White



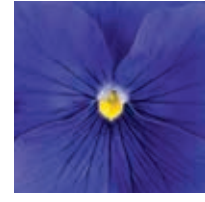
Deep Blue w/ Blotch



Masquerade



Rose w/ Blotch



True Blue



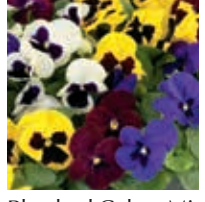
White w/ Blotch



White w/ Rose Blotch



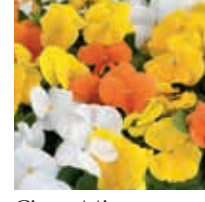
Yellow w/ Blotch



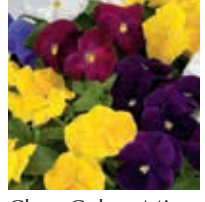
Blotched Colors Mix



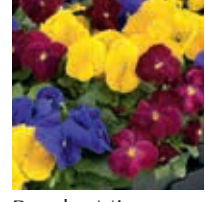
Bright Colors Mix



Citrus Mix



Clear Colors Mix



Royalty Mix

New Colors & Mixes!

Majestic Giants II

F1 Viola x wittrockiana | **B**

- X-large flowered: 4-in. blooms
- Research shows consumers know this series by name
- The preferred choice for fall and spring markets
- Presents bud and bloom at first flush so color is continuous through entire distribution channel
- Now available in clear colors!

MINIMUM GERM: 90%

SEED FORM: Performax, Primax

CROP TIME: Fall to Spring 11 – 12 Weeks

CONTAINER SIZE: Packs, 4", Baskets

PLANT HEIGHT: 8"

PLANT WIDTH: 6"

COLORS / MIXES: 17 / 4

NEW

Clear Purple



Blue & White



Blue Jeans



Clear Yellow



Clear White

NEW



Deep Blue w/ Blotch



Fire



Marina



Mid Blue w/ Blotch



Ocean



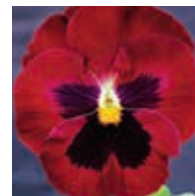
Purple w/ Blotch



Red w/ Blotch



Rosalyn



Rose w/ Blotch



Sherry



White w/ Blotch



Yellow w/ Blotch



Autumn Mix

NEW



Blotch Mix

**AS
WINNER**



Clear Mix

NEW



Girl Friends Mix

Crown

F1 Viola x wittrockiana | **B**

- Large-flowered: 3.25-in. blooms
- Crisp, clear colors make this a favorite for landscape use
- Reliable landscape performance due to thick petals and leaves
- Strong plants are very cold tolerant

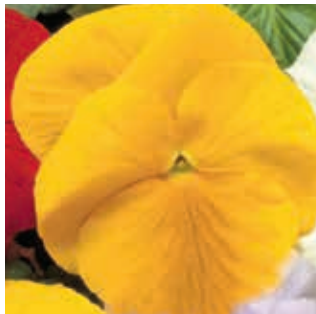
MINIMUM GERM: 90%
SEED FORM: Primax
CROP TIME: Fall to Spring 11 – 12 Weeks
CONTAINER SIZE: Packs, 4", Baskets
PLANT HEIGHT: 7"
PLANT WIDTH: 5"
COLORS / MIXES: 9 / 1



Azure



Blue



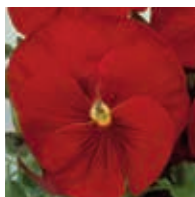
Golden



Orange



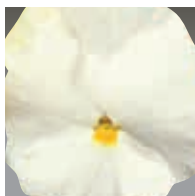
Purple



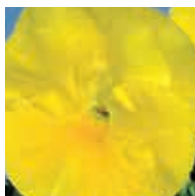
Rose



Scarlet



White



Yellow



Mix

Blueberry Thrill & Wine Flash

F1 Viola x wittrockiana | **B**

- Large-flowered: 3.25-in. blooms
- Unique colors and patterns are ideal for specialty promotions and mixed containers
- Great for both spring and fall sales

MINIMUM GERM: 90%
SEED FORM: Performax, Primax
CROP TIME: Fall to Spring 10 – 11 Weeks
CONTAINER SIZE: Packs, 4", Baskets
PLANT HEIGHT: 7"
PLANT WIDTH: 5"
COLORS / MIXES: 1 / 0



Blueberry Thrill



Wine Flash

Dynamite

F1 Viola x wittrockiana | **B**

- Large-flowered: 3.25-in. blooms
- Plants bloom continuously from fall through spring
- Maintains a compact habit for better performance at retail
- Clear and novelty colors

MINIMUM GERM: 90%

SEED FORM: Performax, Primax

CROP TIME: Fall to Spring 10 – 11 Weeks

CONTAINER SIZE: Packs, 4", Baskets

PLANT HEIGHT: 7"

PLANT WIDTH: 5"

COLORS / MIXES: 9 / 1



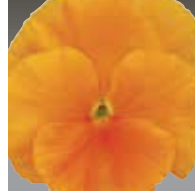
Beacon Blue



Lavender



Light Blue



Orange



Pure White



Purple



Scarlet



Yellow



Clear Mix

Blue Jeans



Supreme

F1 Viola x wittrockiana | **B**

- Medium-flowered: 2.5-in. blooms
- Early flowering saves 7 – 10 days in production
- Strong clear colors and great flower power
- Best for spring sales

MINIMUM GERM: 90%
SEED FORM: Performax, Primax
CROP TIME: Fall to Spring 9 – 10 Weeks
CONTAINER SIZE: Packs, 4", Baskets
PLANT HEIGHT: 6"
PLANT WIDTH: 5"
COLORS / MIXES: 9 / 0



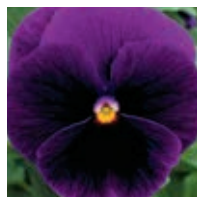
Deep Blue



Marina



Orange



Purple



Rose



Scarlet



White



Yellow



True Blue

Ultima

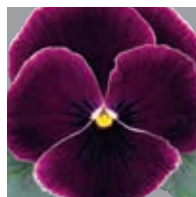
F1 Viola x wittrockiana | **B**

- Medium-flowered: 2.5-in. blooms
- Best for spring sales
- Unique colors for premium assortments and sell through
- Morpho is a multiple award winner and striking in baskets

MINIMUM GERM: 90%
SEED FORM: Primax (Morpho also available in Performax)
CROP TIME: Fall to Spring 10 – 11 Weeks
CONTAINER SIZE: Packs, 4", Baskets
PLANT HEIGHT: 5"
PLANT WIDTH: 5"
COLORS / MIXES: 7 / 0



Morpho



Purple Lace



Radiance Deep Blue



Radiance Lilac



Radiance Pink



Radiance Red



Radiance Violet

For detailed growing information, visit
www.sakataornamentals.com

Explorer

F1 *Petunia grandiflora pendula* | B

- Early to flower in the spring and continues to flower under the short days of fall
- Bred for use as a groundcover in garden beds—one plant can easily cover a 3 x 3-ft. area
- The trailing habit is also outstanding in baskets
- Very weather tolerant and performs well all over the country, including coastal climates

MINIMUM GERM: 90%

SEED FORM: Pelleted

CROP TIME: Spring to Summer 10 – 12 Weeks

CONTAINER SIZE: 4 – 6"

PLANT HEIGHT: 4"

PLANT WIDTH: 14"

COLORS / MIXES: 9 / 0



Blue



Coral



Lavender



Magenta

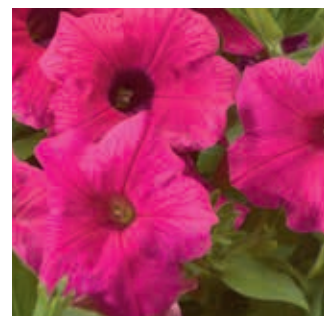


Pink



Purple

Rose Pink



Rose



Clear White



Hulahoop

F1 Petunia grandiflora | **B**

- Early-flowering picotee petunia with 3-in. blooms
- Excellent outside, heavy blooming and compact
- Proven performance over many years in packs and gardens

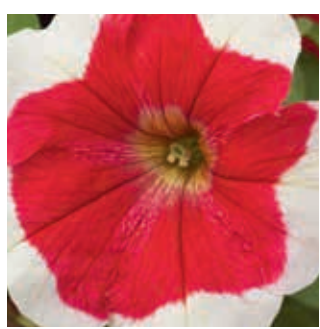
MINIMUM GERM: 90%
SEED FORM: Raw, Pelleted
CROP TIME: Spring to Summer 9 – 11 Weeks
CONTAINER SIZE: Packs, 4"
PLANT HEIGHT: 7"
PLANT WIDTH: 6"
COLORS / MIXES: 5 / 1



Blue



Burgundy



Red



Rose



Velvet



Mix

Merlin

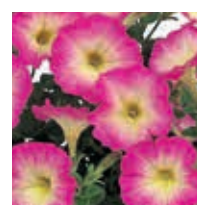
F1 Petunia multiflora | **B**

- Easy, uniform and quick in production
- Slow to stretch: allows for high density growing
- Dwarf plant habit is retained throughout the season
- Plants recover quickly after inclement weather

MINIMUM GERM: 90%
SEED FORM: Raw, Pelleted
CROP TIME: Spring to Summer 9 – 11 Weeks
CONTAINER SIZE: Packs, 4"
PLANT HEIGHT: 6"
PLANT WIDTH: 5"
COLORS / MIXES: 3 / 1



Blue Morn



Pink Morn



Rose Morn



Morn Mix

Astra

F1 *Platycodon grandiflorus* | **P**

- Abundant semi-double or single star-shaped flowers measure 2 – 3 inches in diameter
- Exceptionally long shelf life
- Excellent heat tolerance for summer programs
- Blue is a SAF 2009 Outstanding Variety

MINIMUM GERM: 80%

SEED FORM: Raw

CROP TIME: Spring to Fall 14 – 16 Weeks

CONTAINER SIZE: 5"

PLANT HEIGHT: 5"

PLANT WIDTH: 5"

COLORS / MIXES: 7 / 0



Blue



Pink



Semi-Double Blue



Semi-Double
Lavender



Semi-Double Pink



Semi-Double
White



White

Sentimental Blue

F1 *Platycodon grandiflorus* | **B P**

- Puffy flower buds open into 3-in. single, upward-facing, bell-shaped flowers
- This genetically dwarf plant can be sold for bedding or as a pot crop then planted in the garden
- Perennial in some areas

MINIMUM GERM: 80%

SEED FORM: Raw

CROP TIME: Spring to Fall 13 – 14 Weeks

CONTAINER SIZE: 4"

PLANT HEIGHT: 5"

PLANT WIDTH: 6"

COLORS / MIXES: 1 / 0



Sentimental Blue

Wonderland

Papaver nudicaule | **B**

- Large flowered: 4-in. blooms
- Recommended for 4-in. pots for early spring bedding sales
- Cool crop, can be grown with minimal heat
- Blooms through spring—very wind and cold resistant

MINIMUM GERM: 80%
SEED FORM: Raw
CROP TIME: Spring 20 – 26 Weeks
CONTAINER SIZE: Packs, 4"
PLANT HEIGHT: 12"
PLANT WIDTH: 4"
COLORS / MIXES: 0 / 1



Mix



Wonderland

Sunseeker

F1 Portulaca grandiflora | **B**

- Ideal for early spring sales—blooms under short days
- Offers a controlled upright plant habit that works well for sales in cell packs and 4-in. pots
- Double 2-in. flowers remain open under low light

MINIMUM GERM: 85%
SEED FORM: Multi-Pellet
CROP TIME: Spring to Summer 7 – 8 Weeks
CONTAINER SIZE: Packs, 4"
PLANT HEIGHT: 6"
PLANT WIDTH: 10"
COLORS / MIXES: 6 / 1



Cream



Light Pink



Orange



White



Yellow



Red



Mix

For detailed growing information, visit www.sakataornamentals.com

Danova

F1 Primula acaulis | **B** **P**

- Superior seed quality with excellent seedling vigor
- The market leader for mid-early season sales—setting the standard for uniform plant habit, flower size and quality
- Well suited for bedding, mixed containers and pot plant use
- For the tightest flowering window and the best-selling colors, we made the selection easy with the Grower's Select Mix
- Available in solid and bicolors

MINIMUM GERM: 85%

SEED FORM: Raw

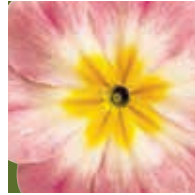
CROP TIME: Winter to Spring 22 Weeks

CONTAINER SIZE: 4 – 5"

PLANT HEIGHT: 4"

PLANT WIDTH: 6"

COLORS / MIXES: 28 / 3



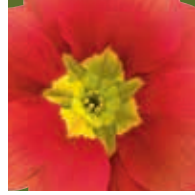
Apple Blossom Bicolor



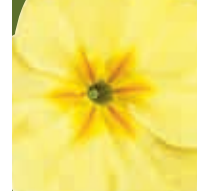
Blue



Burgundy Bicolor



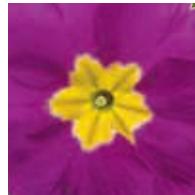
Copper



Cream Yellow



Lemon Yellow



Light Violet



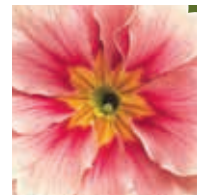
Lime



Orange Yellow



Pink



Pink Bicolor



Purple



Cherry w/ Edge



Red



Red & Rose Shades



Red & Yellow Bicolor



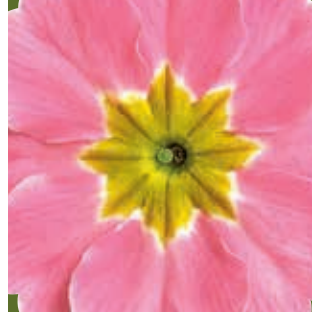
Red w/ Yellow Edge



Rose



Rose & White Bicolor



Rose w/ Lavender Shades



Salmon Orange



Scarlet



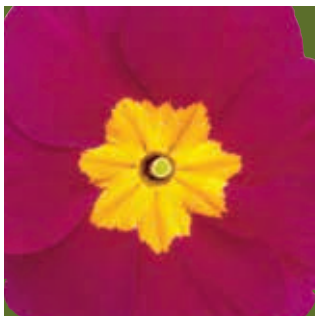
Sky Blue



Velvet Red



White



Wine Red



Wine Bicolor



Yellow w/ Eye



Bicolor Mix



Grower's Select Mix



Mix

New Series!

Danessa

F1 Primula acaulis | **B**

- The market's earliest flowering acaulis
- Bred for uniform plant habit, flower size and quality
- Requires no cold for flower initiation
- Compact habit for pot-tight production

MINIMUM GERM: 85%
SEED FORM: Raw
CROP TIME: Winter to Spring 19 Weeks
CONTAINER SIZE: 4 – 5"
PLANT HEIGHT: 4"
PLANT WIDTH: 6"
COLORS / MIXES: 9 / 1 (Mix not shown)

White

NEW



Apricot Pink w/ Rose Eye



Blue



Burgundy



Golden Shades



Pink Shades



Pink w/ Rose Eye



Rose Bicolor



Scarlet

For detailed growing information, visit
www.sakataornamentals.com

Daniella

F1 Primula acaulis | **B**

- Consistently large flowers measure 2 – 2.5 inches in diameter
- The best mid-season series on the market—recommended for growers selling into February
- Flowers two weeks later than Danova

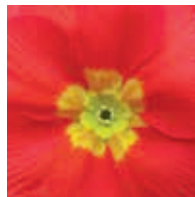
MINIMUM GERM: 85%
SEED FORM: Raw
CROP TIME: Winter to Spring 24 Weeks
CONTAINER SIZE: 4 – 5"
PLANT HEIGHT: 4"
PLANT WIDTH: 6"
COLORS / MIXES: 10 / 1



Apricot



Blue



Copper



Cream Yellow



Neon Rose



Pink



Rose Bicolor



Scarlet



White



Yellow



Mix

Delight

F1 Primula acaulis | **B**

- For early to mid-early sales season
- Offers unique colors for super consumer appeal
- An excellent complement to Danova with the same early characteristics and similar plant habit

MINIMUM GERM: 85%
SEED FORM: Raw
CROP TIME: Winter to Spring 22 Weeks
CONTAINER SIZE: 4 – 5"
PLANT HEIGHT: 4"
PLANT WIDTH: 6"
COLORS / MIXES: 4 / 0



Cherry



Almond Blossom



Blueberry



Strawberry

Pageant

F1 *Primula acaulis* | **B**

- Ideal for fall and early winter production in mild climates
- Minimal cold requirements and extra early flowering means substantial savings in heating costs
- Very compact plants with small foliage makes high density pack production possible
- Hybrid vigor allows seed to be sown in August, plants ready for shipping in February

MINIMUM GERM: 80%

SEED FORM: Raw, Primax

CROP TIME: Winter to Spring 20 Weeks

CONTAINER SIZE: 4"

PLANT HEIGHT: 4"

PLANT WIDTH: 5"

COLORS / MIXES: 13 / 1



Apricot



Blue



Bright Pink



Bright Rose Shades



Carmine Bicolor



Deep Carmine Rose



Lemon Yellow



Mid Blue



Red Bicolor



Rose Pink Bicolor



Scarlet



White w/ Yellow Eye



Yellow Shades



Mix

Rosanna

F1 Primula acaulis | P

- A unique product with rosebud-shaped flowers for the gift and pot plant market
- Effective in flower pouches

MINIMUM GERM: 85%
SEED FORM: Primax
CROP TIME: Winter to Spring 24 Weeks
CONTAINER SIZE: 4 – 5"
PLANT HEIGHT: 4"
PLANT WIDTH: 6"
COLORS / MIXES: 6 / 1



Apricot Shades



Rose Pink Shades



Scarlet



White



Yellow Shades



Mix



Pink Shades

Prima

F1 Primula malacoides | P

- A fragrant, uniform series for the gift and pot plant segment with showy flowers held well above the foliage
- A tight flowering window across all colors makes handling and shipping easier and more cost effective

MINIMUM GERM: 85%
SEED FORM: Raw
CROP TIME: Winter to Spring 20 Weeks
CONTAINER SIZE: 4 – 5"
PLANT HEIGHT: 6 – 8"
PLANT WIDTH: 6 – 7"
COLORS / MIXES: 5 / 1



Carmine Rose



Lilac



Pink



Red



White



Mix

SuperNova

F1 Primula polyantha | **B**

- Good for sales as a bedding plant or in containers
- F1 hybrid quality makes for uniformity in the greenhouse, at retail and in the landscape
- Fall flowering for fall sales when potted early; spring flowering when potted later and grown cold
- Exceptionally uniform in habit and flowering time

MINIMUM GERM: 85%

SEED FORM: Raw

CROP TIME: Winter to Spring 21 Weeks

CONTAINER SIZE: 4 – 5"

PLANT HEIGHT: 7"

PLANT WIDTH: 6"

COLORS / MIXES: 10 / 1



Blue



Cream



Golden Yellow



Pink



Purple Bicolor



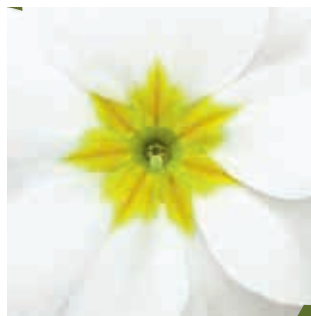
Red



Rose Bicolor



Sky Blue



White



Yellow



Mix

Fire

F1 Primula polyantha | **B**

- Uniquely striking and a great favorite with consumers
- Easy to program for colorful spring or fall sales
- More compact habit and slightly later flowering than SuperNova

MINIMUM GERM: 85%
SEED FORM: Raw
CROP TIME: Winter to Spring 21 Weeks
CONTAINER SIZE: 4"
PLANT HEIGHT: 5"
PLANT WIDTH: 5"
COLORS / MIXES: 1 / 0



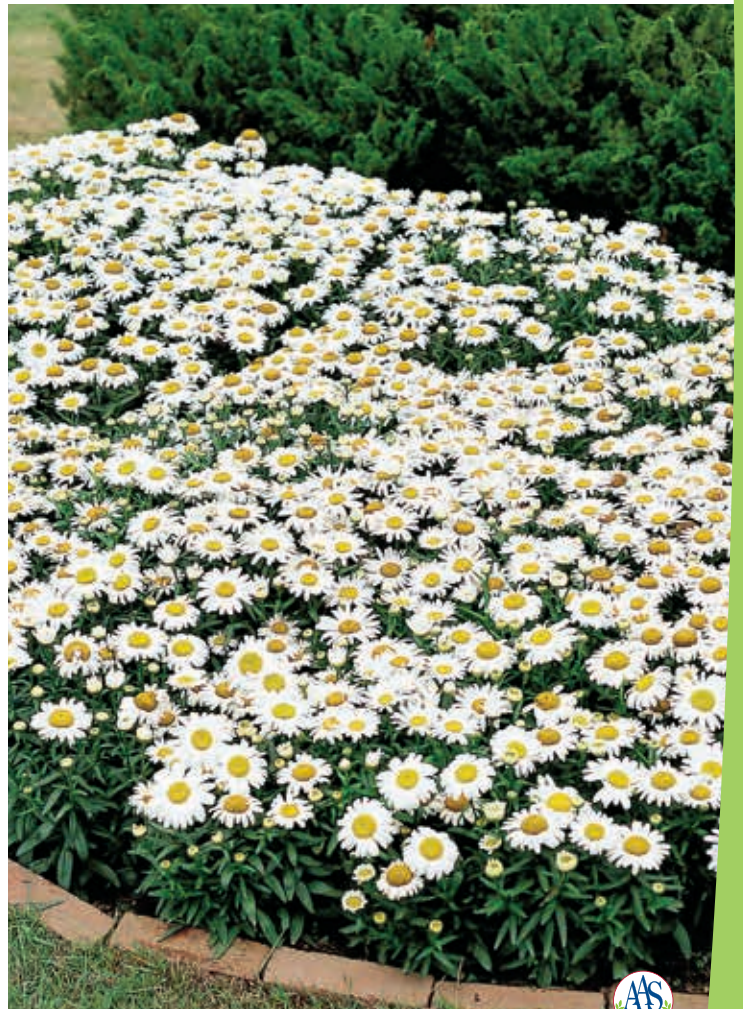
Fire

Snow Lady

F1 Leucanthemum x superbum | **B**

- A fast-growing, first-year-flowering perennial that fits in with bedding plant production and sales seasons
- Fall sow for early spring sales—adaptable to a wide range of climates—hardy plants are capable of withstanding temperatures down to 23°F
- Blooms upright on dwarf plants without the use of PGRs

MINIMUM GERM: 90%
SEED FORM: Performax
CROP TIME: Spring 20 – 24 Weeks
CONTAINER SIZE: 5"
PLANT HEIGHT: 7"
PLANT WIDTH: 6"
COLORS / MIXES: 1 / 0



Snow Lady



For detailed growing information, visit www.sakataornamentals.com



The FIRST EVER trailing
snapdragon from seed!

New Color!

Candy Showers

F1 *Antirrhinum majus nanum pendula* | **B**

- Beautiful as a single color or as a mix of colors in hanging baskets and mixed containers
- Blooms under short days—suitable for fall and spring
- Strong, flexible stems ship well and hold up in the garden
- Combine with flowering cabbage, kale and pansies

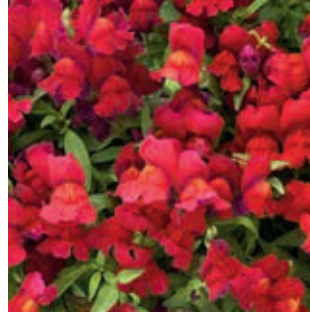
MINIMUM GERM: 80%
SEED FORM: Mutli-pellet
CROP TIME: Fall to Spring 10 – 12 Weeks
CONTAINER SIZE: 4 – 6", Baskets
PLANT HEIGHT: 5"
PLANT WIDTH: 12"
COLORS / MIXES: 6 / 1 (Mix not shown)



Deep Purple



Orange



Red



Rose



Yellow



White

NEW



Red, Orange and Rose

Sonnet

F1 Antirrhinum majus nanum | **B**

- A fragrant garden-height snapdragon suited for outdoor production for spring and fall sales
- Well-suited for large containers but can be grown in smaller pots and packs with PGR application
- A strong root system and sturdy side branching makes for excellent garden performance

MINIMUM GERM: 80%

SEED FORM: Raw

CROP TIME: Spring to Fall 11 – 12 Weeks

CONTAINER SIZE: Packs, 4"

PLANT HEIGHT: 12"

PLANT WIDTH: 4"

COLORS / MIXES: 8 / 1



Burgundy



Carmine



Crimson



Orange Scarlet



Pink



Rose



White



Yellow



Mix

For detailed growing information, visit
www.sakataornamentals.com

Speedy Sonnet



Speedy Sonnet

F1 *Antirrhinum majus nanum* | **B**

- Everything we love about Sonnet, but earlier! Bred for early winter though early spring sales in high light areas
- A strong root system and sturdy side branching makes for excellent garden performance
- Fragrant

MINIMUM GERM: 80%

SEED FORM: Raw

CROP TIME: Fall to Spring 11 – 20* Weeks
(*Sowing Sept – Dec.)

CONTAINER SIZE: Packs, 4"

PLANT HEIGHT: 12"

PLANT WIDTH: 4"

COLORS / MIXES: 5 / 1



Bronze



Crimson



Rose



White



Yellow



Mix

Floral Showers

F1 *Antirrhinum majus nanum pumilum* | **B**

- A fast, day-length neutral series that is ideal for packs
- Dwarf habit is good for pack and pot culture in 4-in. pots with little or no PGRs
- Flowers within a tight window both spring and fall
- Attractive retail display in separate colors or mixed

MINIMUM GERM: 80%

SEED FORM: Raw

CROP TIME: Spring to Fall 10 – 11 Weeks

CONTAINER SIZE: Packs, 4"

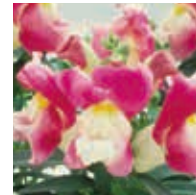
PLANT HEIGHT: 6"

PLANT WIDTH: 6"

COLORS / MIXES: 15 / 2



Apricot Bicolor



Coral Bicolor



Crimson



Deep Bronze



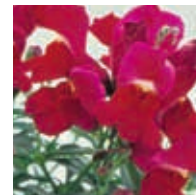
Fuchsia



Lavender Bicolor



Lilac



Purple



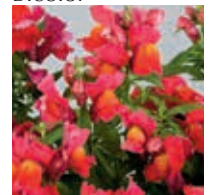
Red & Yellow Bicolor



Rose



Rose Pink



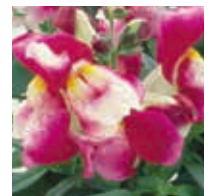
Scarlet



Yellow



White

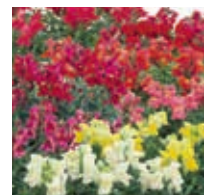


Wine Bicolor

Wine Bicolor



Bicolor Mix



Mix

Admiral

F1 Antirrhinum majus | **C**

- Early flowering variety belonging to Group 1
- Very uniform growth under short day conditions in winter
- Bright, clear colors
- Tightly-spaced florets on long flower spikes

MINIMUM GERM: 80%
SEED FORM: Raw
CROP TIME: Group 1, Spring 16 – 20 Weeks
STEM LENGTH: 48"
SPACING: 8 – 10 per ft²
COLORS / MIXES: 6 / 0



Crimson Pink Pink Bicolor



Purple White Yellow



Admiral

Calima

F1 Antirrhinum majus | **C**

- Group 2.5 – 4 flowering
- Easily managed—quick cycle turn with very high quality
- Thick strong flower stems with excellent length
- Bred for equatorial production areas

MINIMUM GERM: 80%
SEED FORM: Raw
CROP TIME: Groups 2.5 to 4, Mid-Spring to Fall
 16 – 20 Weeks
STEM LENGTH: 48"
SPACING: 8 – 10 per ft²
COLORS / MIXES: 5 / 0



Deep Rose (Group 4)



Ivory White (Group 3)



Pink (Group 3.5)




Pure White (Group 2.5)



Yellow (Group 2.5)

Cheerful & Mid Cheerful

Matthiola incana | 

- 90% double flowers without selection—incredible fragrance and form
- Cheerful is less delayed in warmer temperatures compared to Mid Cheerful

MINIMUM GERM:	80%
SEED FORM:	Raw
CHEERFUL CROP TIME:	Cool 11 – 13 Weeks
MID CHEERFUL CROP TIME:	Cool 12 – 15 Weeks
STEM LENGTH:	36"
SPACING:	5 x 5"
CHEERFUL COLORS / MIXES:	2 / 0
MID CHEERFUL COLORS / MIXES:	1 / 0

Cheerful

- Strong, non-branching stems with deep green pubescent foliage



White



Yellow

Mid Cheerful

- Ideal for use under warmer temperatures where longer flower stems are desired



Mid Cheerful White

Iron

Matthiola incana | 

- Iron is aptly named for the strong stems and robust growth
- An innovative, high-quality stock producing tight flower spikes on heads that do not stretch
- Early-mid season flowering
- Very tightly spaced florets

MINIMUM GERM: 80%

SEED FORM: Raw

CROP TIME: Cool 13 – 15 Weeks

STEM LENGTH: 24"

SPACING: 5 x 5"

COLORS / MIXES: 5 / 0



Apricot



Pink



Rose



White



Yellow

Quartet

Matthiola incana | P C

- Strong stems support a beautiful spray of sweetly-scented flowers—ideally suited for bouquets but can also be used as a spring bedding plant in some markets
- Early to bloom with 55% double flowers
- Suitable for a 6-in pot or gallon with the use of PGRs
- Requires pinching of the first flower bud to force secondary bud development and spray-style flowers

MINIMUM GERM: 80%
SEED FORM: Raw
CROP TIME: Cool 13 – 15 Weeks
STEM LENGTH: 24"
SPACING: 5 x 5"
COLORS / MIXES: 11 / 0



Apricot



Blue



Cherry Blossom



Deep Apricot



Lavender



Marine



Purple



Red



Rose




White



Yellow

Sunbright & Sunbright Supreme

F1 Helianthus annuus | 

- Perform well under short day and low temperature conditions (winter)
- Both are single-flowered, pollenless types that hold up extremely well in shipping
- Strong necks for upward facing flower heads

MINIMUM GERM:	90%
SEED FORM:	Raw, Primax
SUNBRIGHT CROP TIME:	7 – 11 Weeks
SUNBRIGHT SUPREME CROP TIME:	7 – 10 Weeks
STEM LENGTH:	60 – 72"
SPACING:	5 x 5"
SUNBRIGHT COLORS / MIXES:	1 / 0
SUNBRIGHT SUPREME COLORS / MIXES:	1 / 0

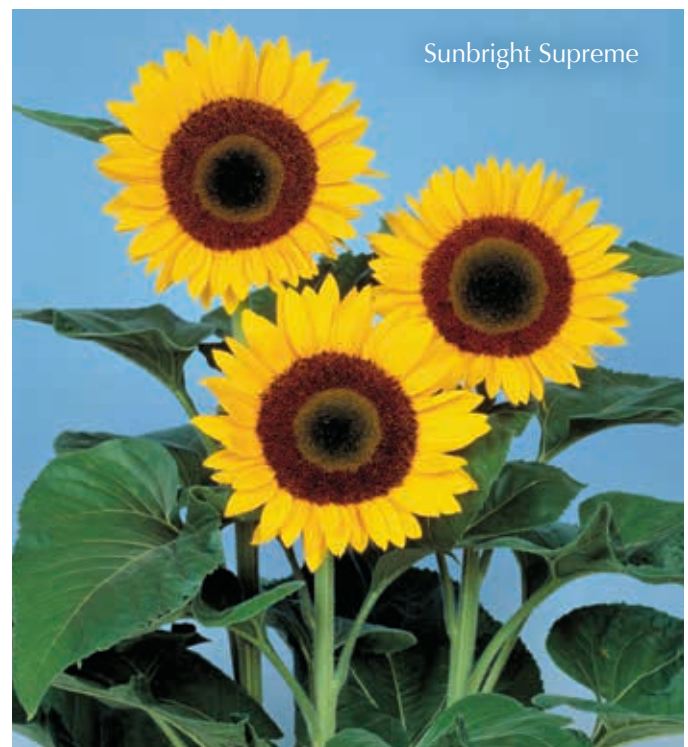
Sunbright

- More sensitive to photoperiod, flowering from 50 days in winter to 70 – 80 days in summer
- Produces x-large flowers under long photoperiods
- Maintain a minimum temperature of 45°F/7°C to prevent flower damage and maintain active growth



Sunbright Supreme

- Less sensitive to photoperiod, flowering from 50 days in winter to 65 – 70 days in summer
- Maintain a minimum temperature of 50°F/10°C to prevent flower damage and maintain active growth



New Series!

Vincent[®]

F1 *Helianthus annuus* | 

- Pollen free and day length-neutral for year round production
- High germ, short crop cycle and tight flowering window
- Round, overlapping flower petals create a semi-double look
- Flowers form at a 45° angle on strong stems for superior presentation
- Small upper leaves make Vincent ideal for bouquets

MINIMUM GERM:	90%
SEED FORM:	Standard
CROP TIME:	8 – 10 Weeks
STEM LENGTH:	60 – 72"
SPACING:	5 x 5"
COLORS / MIXES:	2 / 0



Vincent



Vincent



Vincent's Choice:

Features the well-loved combo of brown centers and deep orange petals



Vincent's Fresh:

Features a crisp, green center which is a clear alternative to current selections



Blue



Blue & White



Burgundy



Rose Picotee



White

Little Kiss

F1 *Torenia fournieri* | **B**

- Naturally compact—no PGRs needed!
- Very easy to produce with a short cropping window
- Excellent in beds and as a component in mixed containers
- Continuously flowering in full sun or partial shade

MINIMUM GERM: 80%

SEED FORM: Pelleted

CROP TIME: Spring to Summer 12 – 13 Weeks

CONTAINER SIZE: Packs, 4"

PLANT HEIGHT: 8"

PLANT WIDTH: 8"

COLORS / MIXES: 5 / 1



Mix

Victory

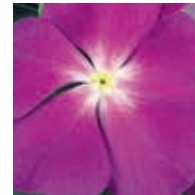
Catharanthus roseus | **B**

- Uniformity, early flowering and a broad color range make this the natural choice for pack production
- Low and early basal branching fills pots and packs nicely
- Vigorous, finely-branched roots support good disease resistance

MINIMUM GERM: 85%
SEED FORM: Raw
CROP TIME: Spring to Summer 11 – 12 Weeks
CONTAINER SIZE: Packs, 4"
PLANT HEIGHT: 10 – 12"
PLANT WIDTH: 6 – 8"
COLORS / MIXES: 13 / 1



Apricot
US 200100121



Blue



Bright Eye



Carmine



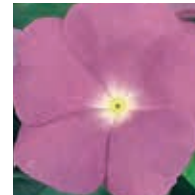
Cranberry
US 200100123



Deep Pink



Grape



Lavender



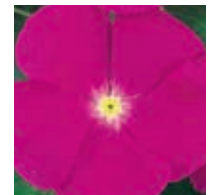
Light Pink



Light Pink w/ Red Eye



Pure White
US 200100124



Purple



Red US 200100122



Mix



Bright Eye



Berry Pie

NEW



Clear Orange

NEW



Clear Purple

NEW



Clear Yellow

NEW



Icy Blue

NEW



Lemon Splash

NEW



Popcorn

NEW



Purple Glow

NEW



Yellow Jump Up

NEW



Mix

NEW

New Series! ColorMax

F1 Viola cornuta | **B**

- The next BIG thing in violas!
- Positions well in packs pots, baskets and mixed containers —beefy plants really fill out. Great weather tolerance!
- Larger flowers than standard violas and very free flowering —more color per square foot

MINIMUM GERM: 90%
SEED FORM: Performax, Primax
CROP TIME: Fall to Spring 9 – 10 Weeks
CONTAINER SIZE: Packs, 4", Baskets
PLANT HEIGHT: 4"
PLANT WIDTH: 10"
COLORS / MIXES: 10 / 1



Rose w/ Blotch

NEW



Rebelina

F1 Viola cornuta | **B**

- Uniformity, early flowering and a broad color range make this the natural choice for pack production
- Low and early basal branching fills pots and packs nicely
- Vigorous, finely branched roots support good disease resistance

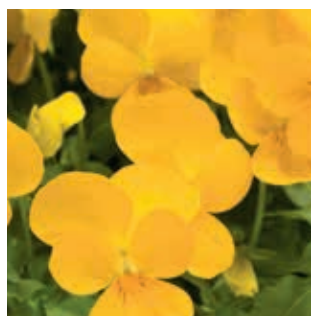
MINIMUM GERM: 90%
SEED FORM: Primax
CROP TIME: Fall to Spring 9 – 10 Weeks
CONTAINER SIZE: Packs, 4", Baskets
PLANT HEIGHT: 4"
PLANT WIDTH: 12"
COLORS / MIXES: 4 / 0



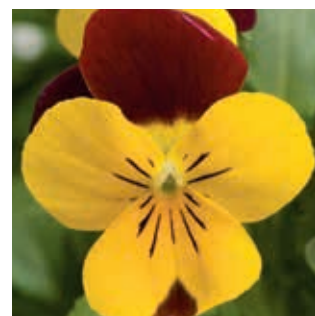
Blue & Yellow



Golden Yellow



Golden Yellow



Red & Yellow



Purple & Yellow



Apricot US 200400275



Cherry US 9800014



Profusion

Zinnia hybrid | **B**

- The GO-TO zinnias for disease resistance and uniformity
- Incredible uniformity allows for bench run sales in all colors—including singles and doubles
- Extreme heat and drought resistance makes for excellent landscape performance across the country

MINIMUM GERM: 85%
SEED FORM: Raw, Encrusted
CROP TIME: Spring to Fall 10 – 12 Weeks
CONTAINER SIZE: Packs, 4 – 6", Gallons
PLANT HEIGHT: 14 – 18"
PLANT WIDTH: 20 – 24"
COLORS / MIXES: 8 / 4



Coral Pink US 200700128



Deep Apricot US 200700129



Fire US 200400276



Orange US 9800013



White US 9800350



Sunrise Mix



3 Color Mix



5 Color Mix



7 Color Mix



Yellow US 200900297

3 Color Mix: Cherry, Orange, White
 5 Color Mix: Apricot, Cherry, Fire, Orange, White
 7 Color Mix: Apricot, Cherry, Coral Pink, Fire, Orange, White, Yellow

B = Bedding **C** = Cut Flower **P** = Potted Crop

Profusion Double

Zinnia hybrid | **B**

- The GO-TO zinnias for disease resistance and uniformity
- Incredible uniformity allows for bench run sales in all colors—including singles and doubles
- Extreme heat and drought resistance makes for excellent landscape performance across the country
- Absolutely covered with an abundance of big, full blooms

MINIMUM GERM: 85%
SEED FORM: Raw, Encrusted
CROP TIME: Spring to Fall 10 – 12 Weeks
CONTAINER SIZE: Packs, 4 – 6", Gallons, Baskets
PLANT HEIGHT: 14 – 18"
PLANT WIDTH: 20 – 24"
COLORS / MIXES: 7 / 2 (Mix not shown)



Cherry US 200700130



Deep Salmon PVPAF SAKIN013



Fire US 200800170 SAKZIN010



Golden US 200800171 SAKZIN008



Hot Cherry PVPAF SAKIN014



White US 200800172 SAKZIN009



Yellow PVPAF SAKIN012



Sunrise Mix



Yellow and Hot Cherry



Works great in a basket!



Mid Blue PPAF SAKCAL112

New Color!
Calipetite®

Calibrachoa x hybrid | **B**

- Naturally compact and well-behaved! No PGRs or supplemental lighting needed
- The BEST choice for high density/small-container production
- Flowers under short days—early shipping in color is a breeze
- Mini plants offer mighty impact at retail for high sell-through

VARIETY	TIMING	HEIGHT	WIDTH	HABIT
Mid Blue	Very Early	6 – 12"	8 – 14"	Mounding
Pink	Very Early	6 – 12"	8 – 14"	Mounding
Red	Very Early	6 – 12"	8 – 14"	Mounding
White	Very Early	6 – 12"	8 – 14"	Mounding
Yellow	Very Early	6 – 12"	8 – 14"	Mounding



Pink PPAF SAKCAL104



Red US PP24,381 SAKCAL105



White PPAF SAKCAL108



Yellow US PP24,382 SAKCAL107



For detailed growing information, visit
www.sakataornamentals.com

Coleus Collection

Solenostemon x hybrida | **B**

- Easy to grow component plants provide vivid color and texture
- Full sun to heavy shade versatility
- Well branched plants with dense, bushy habit
- Late to flower and no deadheading required

VARIETY	VIGOR	HEIGHT	WIDTH	HEAT♥	HABIT
Burgundy Wedding Train	Compact	6 – 12"	10 – 18"	✓	Trailing
Chocolate Drop	Medium	6 – 12"	12 – 18"	✓	Trailing
Emerald & Snow	Medium	24 – 42"	16 – 24"	✓	Upright
Lava Rose	Medium	6 – 12"	12 – 18"	✓	Trailing
Strawberry Drop	Medium	6 – 12"	12 – 18"	✓	Trailing
The Flume	Medium	6 – 12"	12 – 18"	✓	Mounding



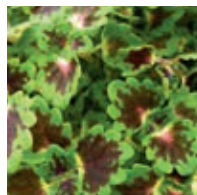
Burgundy Wedding Train US PP17,003 Kakegawa CE10



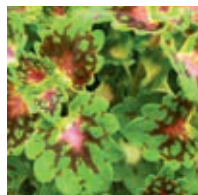
Chocolate Drop
US PP15,371 Kakegawa CE2



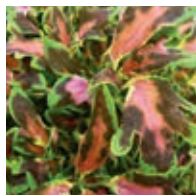
Emerald & Snow



Lava Rose
US PP15,341 Kakegawa CE1



Strawberry Drop
US PP15,827 Kakegawa CE5



The Flume
US PP17,762 Kakegawa CE11

Orange Marmalade

Crossandra infundibuliformis | **B**

- A superb crop for late summer and early fall sales
- Outstanding results in virtually every field trial, Orange Marmalade is tolerant of high heat and humidity
- Glossy green foliage and large, bright orange flower clusters bring a tropical flair to home or patio
- Eye-catching in mixed containers, patio planters and beds

VARIETY	TIMING	VIGOR	HEIGHT	WIDTH	HEAT♥
Orange Marmalade	Medium	Medium	12 – 20"	10 – 18"	✓



Orange Marmalade (Firecracker Flower)



Purple PPAF SAKGOM004



Snow-tip Lavender PPAF SAKGOM005



White PPAF SAKGOM003

Pinball™

Gomphrena hybrid | **B**

- Unique texture, mounding habit and continuous flowering—great alone or mixed in containers and beds
- Offers vibrant color for higher retail sell-through
- Excellent heat and drought tolerance—perfect for the landscape
- Delivers worry-free performance all summer long

VARIETY	TIMING	HEIGHT	WIDTH	HEAT ♥	HABIT
Purple	Early	12 – 20"	12 – 20"	✓	Mounding
Snow-tip Lavender	Early	12 – 20"	12 – 20"	✓	Mounding
White	Early	12 – 20"	12 – 20"	✓	Mounding



Pinball Purple, Snow-tip Lavender and White

Unstoppable SunPatiens®!

Easy to Grow and Sell

SunPatiens can be grown cool for highest quality and to save energy costs. Plus, they offer strong root development for quick establishment and growth and can root in two weeks. No PGRs are needed when grown as directed.

Color Consumers Crave

Consumer brand recognition has created unprecedented pull-through demand at retail. Give consumers what they want! Deliver unstoppable color from spring through hard frost with robust, sun, shade and heat-loving SunPatiens!

Available in three distinct habits—
COMPACT, SPREADING and VIGOROUS



Impressive 3-to-1 coverage
compared to traditional impatiens



Blush Pink US PP19,597 SAKIMP013



Coral US PP19,622 SAKIMP009



Deep Rose US PP21,753 SAKIMP017



Electric Orange PPAF SAKIMP025



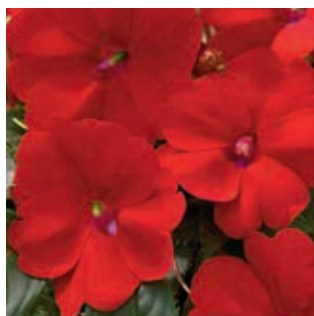
Hot Coral US PP24,321 SAKIMP026



Lilac US PP19,392 SAKIMP012



Pink PPAF SAKIMP019



Red PPAF SAKIMP030



Royal Magenta PPAF SAKIMP029



White US PP24,320 SAKIMP027

New Colors!

SunPatiens® Compact

Impatiens x hybrida hort | **B**

- The best habit for multi pack, high-density production and strong retail appeal
- Shorter internodes and exceptional branching for dense, bushy plants
- 16 – 32 inches tall and 14 – 24 inches wide in the landscape
- Unaffected by Downy Mildew

Variety specifications on page 88



Royal Magenta

IMPATIENS

New Colors!

SunPatiens® Spreading

Impatiens x hybrida hort | **B**

- Bred for a mounding/spreading habit
- Utilize in baskets, containers and the landscape where fast coverage is needed
- 20 – 36 inches tall and 24 – 36 inches wide in the landscape
- Unaffected by Downy Mildew

Variety specifications on page 88



Pink Flash



Carmine Red PPAF SAKIMP022



Clear White
PPAF SAKIMP036



Corona US PP21,014 SAKIMP008



Pink Flash PPAF SAKIMP031



Salmon V/L
US PP19,500 SAKIMP005



Scarlet Red
PPAF SAKIMP032



Shell Pink PPAF SAKIMP035



White V/L US PP21,768 SAKIMP018

For detailed growing information, visit
www.sakataornamentals.com



Lavender US PP19,501 SAKIMP006



Magenta US PP17,662 Misato FG3



Orange US PP17,663 Misato FG2



White US PP19,616 SAKIMP010

SunPatien[®] Vigorous

Impatiens x hybrida hort | **B**

- Great for large landscapes and municipal plantings
- Provides outstanding performance where fast-growing, massive color is essential
- Ideal for 60 – 70 mm landscape ready liners
- New plantings root fast and fill in rapidly, developing strong stems for long-lasting plantings that hold up well in rain and wind
- 24 – 48 inches tall and 24 – 30 inches wide in the landscape
- Unaffected by Downy Mildew

Variety specifications on page 88



Vigorous Magenta

SunPatiens® At-a-Glance

VARIETY	TIMING	VIGOR	HEIGHT	WIDTH	HABIT
COMPACT					
Blush Pink	Early	Medium	16 – 30"	14 – 24"	Upright
Coral	Early	Medium	16 – 30"	14 – 24"	Upright
Deep Rose	Very Early	Medium	12 – 24"	12 – 20"	Upright
Electric Orange	Very Early	Medium	12 – 24"	12 – 20"	Upright
Hot Coral	Very Early	Medium	12 – 24"	12 – 20"	Upright
Lilac	Very Early	Medium	16 – 30"	14 – 24"	Upright
Pink	Early	Medium – Vigorous	18 – 32"	16 – 26"	Upright
Royal Magenta	Early	Medium	16 – 30"	14 – 24"	Upright
Red	Early	Medium	12 – 24"	12 – 20"	Upright
White	Early	Medium	16 – 30"	14 – 24"	Upright
SPREADING					
Carmine Red	Early	Medium	18 – 34"	24 – 36"	Mounding
Clear White	Early	Medium	18 – 34"	24 – 36"	Mounding
Corona	Early	Medium	18 – 34"	24 – 36"	Mounding
Pink Flash	Early	Medium	18 – 34"	24 – 36"	Mounding
Salmon (V/L)	Average	Compact – Medium	14 – 30"	22 – 32"	Mounding
Scarlet Red	Early	Medium – Vigorous	22 – 36"	24 – 36"	Mounding
Shell Pink	Early	Medium	18 – 34"	24 – 36"	Mounding
White (V/L)	Early	Medium	18 – 34"	24 – 36"	Mounding
VIGOROUS					
Lavender	Early	Vigorous	24 – 42"	24 – 30"	Upright
Magenta	Early	Vigorous	24 – 42"	24 – 30"	Upright
Orange	Very Early	Vigorous	24 – 42"	24 – 30"	Upright
White	Early	Vigorous	24 – 42"	24 – 30"	Upright



Marketing Support

Take advantage of the marketing push and retail interest in SunPatiens® with branded packaging and Point-of-Sale materials. Use SunPatiens branded pots, tags, bench cards, banners and posters to communicate the features and benefits of this unstoppable series.

To learn more about SunPatiens branded packaging and POP, visit www.sakataornamentals.com/sunpatiens or visit our consumer site at www.sunpatiens.com



Magic Carpet™

Mecardonia | **B**

- Vibrant blooms blanket plants from spring through frost
- A tough, durable plant that is native to Argentina; extremely heat tolerant
- Offers semi-mounded habit that presents well at retail in packs, 4-inch or baskets
- Durable along garden paths, in high traffic areas and between pavers

VARIETY	TIMING	HEIGHT	WIDTH	HEAT ♥	HABIT
Yellow	Early	4 – 6"	16 – 24"	✓	Semi-mounding



Yellow PPAF SAKMEC002



Enchanting™

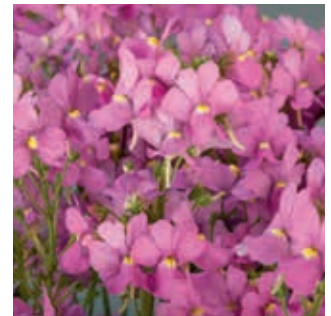
F1 Nemesia fruticans | **C**

- Large flowers on strong, sturdy stems
- Excellent branching for full-bodied plants
- Fragrant flowers
- Ideal for early season, spring primer sales
- Plants do not set seed, allowing for continuous blooming

VARIETY	TIMING	VIGOR	HEIGHT	WIDTH	HABIT
Blue	Early	Medium	12 – 18"	10 – 16"	Upright
Pink	Early	Medium	12 – 18"	10 – 16"	Upright
White	Early	Medium	12 – 18"	10 – 16"	Upright




Blue US PP19,859 NAKNEM002



Pink US PP19,772 NAKNEM003



White US PP19,853 NAKNEM001



Magic Carpet has been developed through the joint exploration program by a public institute of Argentina (INTA) and Sakata. The benefits will be shared with Argentina in compliance with the Convention on Biological Diversity (CBD).

Cape Daisy™

Osteospermum x hybrida | **B**

- Robust plants are covered with large, flat blooms
- Produce in 6 – 8-in. pots, patio and mixed containers
- Flowers stay open under low-light conditions

VARIETY	TIMING	VIGOR	HEIGHT	WIDTH	HABIT
Antique Blue	Slightly Later	Medium	14 – 20"	14 – 20"	Upright
Eye Catcher Purple	Average	Medium	14 – 20"	14 – 20"	Upright
Fire Burst	Average	Medium	12 – 18"	14 – 18"	Upright
Mara	Slightly Later	Medium	14 – 20"	14 – 20"	Upright
Nasinga Prlp	Average	Vigorous	18 – 24"	16 – 22"	Upright
Nasinga Wht	Average	Vigorous	18 – 24"	16 – 22"	Upright
Nuanza Copper Prpl	Average	Medium	14 – 20"	14 – 20"	Upright
Purple	Average	Medium	14 – 20"	14 – 20"	Upright
Soft.Pnk.Imp.	Average	Medium	14 – 20"	14 – 20"	Upright
Terracotta	Slightly Later	Medium	14 – 20"	14 – 20"	Upright



Antique Blue
US PP22,853 SAKOST8076



Eye Catcher Purple
PPAF SAKOST8340



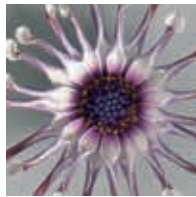
Fire Burst
US PP24,351 SAKOST8433



Mara US PP20,522
SAKOST3586



Nasinga™ Purple



Nasinga™ White



Nuanza Copper Purple



Purple US PP23,502
PPAF SAKOST8181



Softly Pink Improved
PPAF SAKOST8366



Terracotta
US PP22,628 SAKOST8077

Crescendo™

Osteospermum x hybrida | **B**

- An inter-specific SUMMER osteo bred to be produced under warmer conditions than others
- Continues to bloom and set new buds throughout the summer heat
- A semi-mounding habit makes it ideal for baskets and containers, as well as combinations and beds

VARIETY	TIMING	VIGOR	HEIGHT	WIDTH	HABIT
Compact Purple	Average	Medium	12 – 18"	12 – 18"	Upright
Dawn Blush	Early	Vigorous	16 – 24"	16 – 24"	Upright
Light Purple	Early	Vigorous	16 – 24"	16 – 24"	Upright
Primrose	Average	Vigorous	16 – 24"	16 – 24"	Upright
Yellow	Average	Vigorous	16 – 24"	16 – 24"	Upright



Compact Purple
US PP18,981 Kakegawa AU19



Dawn Blush
US PP20,715 SAKOST190



Light Purple
US PP22,287 SAKOST022



Primrose
US PP18,980 Kakegawa AU20



Yellow US PP15,816 SAKOST021



Side Show™

Osteospermum x hybrida | **B**

- The go-to series for mass production and heat tolerance
- Early and well branched—easy to produce dense, full plants with high consumer appeal
- Tolerates a wide range of production conditions
- Ideal for 4 – 6-in. pots, patio or mass garden plantings
- Shorter plants mean more racks per cart for efficient shipping

VARIETY	TIMING	VIGOR	HEIGHT	WIDTH	HABIT
Bicolor Pink	Early	Medium	12 – 18"	12 – 18"	Upright
Bicolor Purple	Average	Medium	12 – 18"	12 – 18"	Upright
Copper Apricot	Average	Medium	12 – 18"	12 – 18"	Upright
Copper Yellow	Average	Medium	12 – 18"	12 – 18"	Upright
Golden Yellow	Average	Medium	12 – 18"	12 – 18"	Upright
Purple	Average	Medium	12 – 18"	12 – 18"	Upright
White	Slightly Later	Vigorous	12 – 18"	12 – 18"	Upright
Yellow Glow	Average	Medium	12 – 18"	12 – 18"	Upright



Bicolor Pink AKZAPIB



Bicolor Purple
US PP15,761 Kakegawa AU10



Copper Apricot



Copper Yellow
US PP19,566 Saksiscopye



Golden Yellow
US PP19,602 Saksisgolye



Purple US PP16,979
Kakegawa AU16



White US PP16,978
Kakegawa AU17



Yellow Glow US PP24,326
SAKOST8194

Lucky

Oxalis sp. | **B**

- Offers bronze foliage with deep purple undersides and bright yellow flowers
- Makes for a striking specimen plant or use for contrast in mixed containers
- Thrives in warm temps—ideal for summer basket sales
- Non-invasive... Lucky is sterile

VARIETY	VIGOR	HEIGHT	WIDTH	HABIT
Lucky	Medium	10 – 14"	12 – 18"	Semi-trailing



Lucky

For detailed growing information, visit www.sakataornamentals.com

New Colors!

SuperCal[®]

Petchoa hybrids | **B**

Part petunia, part calibrachoa, SuperCal[®] offers an unstoppable dose of color. Stands up to all types of weather and stays beautiful, hot or cold, rain or shine!

- Thrives under all kinds of weather from high heat to unexpected late frosts to rainy-wet cycles
- Early blooming, pH tolerant and ideal for cold-frame/low-energy production
- Non-sticky foliage provides a cleaner look and strong roots keep leaves greener under stress
- Great in beds and landscapes! Plus, use SuperCal in combination planters and baskets for real WOW!
- Available in two habits—upright and trailing

UPRIGHT



Artist Rose PPAF SAKPXC010



Blue US PP21,913 SAKPXC006



Blushing Pink PPAF SAKPXC008



Cherry Improved PPAF SAKPXC012



Grape PPAF SAKPXC013



Terra Cotta US PP19,122 Kakegawa S91

Upright & Trailing

SuperCal® varieties tend to fall under two habits—upright and trailing. As plants mature they all develop a strong semi-mounding finish; however, it’s important to consider these differences when selecting varieties for small pot production.



Cherry Improved

TRAILING



Neon Rose US PP19,130 Kakegawa S89



Pink Ice US PP23,372 SAKPXC009



Purple US PP19,129 Kakegawa S90



Salmon Glow PPAF SAKPXC014



Velvet US PP18,824 Kakegawa S88



Violet PPAF SAKPXC011

SuperCal® At-a-Glance

VARIETY	TIMING	HEIGHT	WIDTH	HEAT♥	HABIT	QUARTS OK
Artist Rose	Early	10 – 14"	12 – 18"	✓	Upright	✓
Blue	Average	10 – 14"	12 – 18"	✓	Semi-trailing	✓
Blushing Pink	Early	10 – 14"	12 – 18"	✓	Upright	✓
Cherry Improved	Early	10 – 14"	12 – 18"	✓	Upright	✓
Grape	Average	10 – 14"	12 – 18"	✓	Semi-trailing	
Neon Rose	Slightly Later	10 – 14"	12 – 18"	✓	Upright	
Pink Ice	Average	10 – 14"	12 – 18"	✓	Upright	
Purple	Slightly Later	12 – 16"	14 – 20"	✓	Trailing	
Salmon Glow	Average	10 – 14"	12 – 18"	✓	Semi-trailing	
Terra Cotta	Average	12 – 16"	14 – 20"	✓	Upright	
Velvet	Slightly Later	12 – 16"	14 – 20"	✓	Trailing	
Violet	Average	10 – 14"	12 – 18"	✓	Trailing	



Marketing Support

Take advantage of the marketing push and retail interest in SuperCal® with branded packaging and Point-of-Sale materials.

SuperCal is uniquely superior to all other petunias, but most consumers won't know that just by looking at the plant. Use our branded pots, tags, bench cards, banners and posters to communicate the features and benefits of this pretty & tough petunia.

To learn more about SuperCal branded packaging and POP, visit sakataornamentals.com/supercal or visit our consumer site at supercalpetunia.com



Supertunia®

offered by Proven Winners

Petunia hybrida | **B**

Proven Winners® Supertunia® collection of vegetative petunias represent some of the best varieties on the market, ideally selected for garden performance. Sakata is pleased to have several varieties of petunias in this collection.

- Striking tones and colors
- Outstanding performers in containers, hanging baskets and beds
- Very good weather tolerance over a wide climate range
- Continuous blooming through the season
- Daylength neutral, able to flower under short days

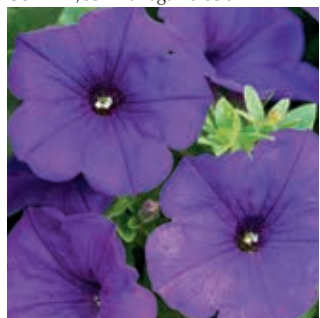
VARIETY	TIMING	HEIGHT	WIDTH	HEAT ♥	HABIT
Rose Blast Charm	Average	10 – 14"	12 – 16"	✓	Mounding
Raspberry Blast	Slightly Later	12 – 16"	12 – 18"	✓	Semi-trailing
Royal Magenta	Average	12 – 16"	12 – 18"	✓	Semi-trailing
Royal Velvet	Average	12 – 16"	12 – 18"	✓	Semi-trailing



Rose Blast Charm
US PP23,055 Hoobenihime



Royal Magenta
US PP14,037 Kakegawa S36



Royal Velvet
US PP13,887 Kakegawa S28



Raspberry Blast
US PP16,588 Temari



New Petunias!

Petunia hybrida | **B**

- Extremely floriferous with striking flower colors and blooms over the whole plant
- Ideal for both baskets and pot production
- Early and long-lasting bloomers with outstanding garden performance

VARIETY	TIMING	VIGOR	HEIGHT	WIDTH	HABIT
Blue Star	Average	Medium	12 – 16"	12 – 18"	Semi-trailing
Pink Radiance	Average	Medium	12 – 16"	12 – 18"	Semi-trailing
Rose Star	Average	Medium	12 – 16"	12 – 18"	Semi-trailing
Violet Bouquet	Average	Medium	12 – 16"	12 – 18"	Mounding



Blue Star PPAF SAKPET095



Pink Radiance
US PP18,698 Kakegawa S84



Rose Star PPAF SAKPET096



Violet Bouquet
PPAF SAKPET097



Blue Star

Summer Joy™

Portulaca oleracea | **B**

- A prostrate portulaca with large single flowers
- Offers a vigorous, spreading habit that is good as a groundcover and in baskets and containers
- Extra-large flowers

VARIETY	VIGOR	HEIGHT	WIDTH	HEAT ♥	HABIT
Orange	Medium	6 – 12"	12 – 18"	✓	Mounding
Pink	Medium	6 – 12"	12 – 18"	✓	Mounding
Scarlet	Medium	6 – 12"	12 – 18"	✓	Mounding
Wine Red	Medium	6 – 12"	12 – 18"	✓	Mounding
Yellow	Medium	6 – 12"	12 – 18"	✓	Mounding



Orange US PP12,328 Kakegawa CY3



Pink US PP12,277



Scarlet US PP12,244



Wine Red US PP12,251



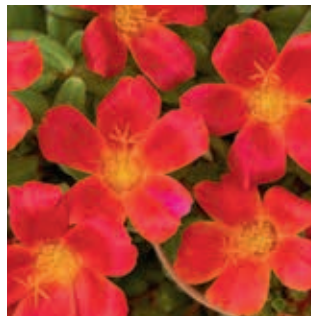
Yellow US PP12,256

Sun Dance™

Portulaca oleracea | **B**

- With a semi-mounding, upright habit, Sun Dance™ makes a strong retail presentation and colorful show in the garden
- Large flowers stay open longer into the early evening for greater consumer satisfaction
- Extremely heat tolerant providing color throughout the summer—excellent season extender

VARIETY	VIGOR	HEIGHT	WIDTH	HEAT ♥	HABIT
Cherry Red	Medium	6 – 12"	12 – 18"	✓	Semi-mounding
Gold	Medium	6 – 12"	12 – 18"	✓	Semi-mounding
Lemon	Medium	6 – 12"	12 – 18"	✓	Semi-mounding
Pink	Medium	6 – 12"	12 – 18"	✓	Semi-mounding
Rose	Medium	6 – 12"	12 – 18"	✓	Semi-mounding
White	Medium	6 – 12"	12 – 18"	✓	Semi-mounding



Cherry Red PPAF SAKPOR002



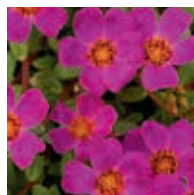
Gold PPAF SAKPOR004



Lemon PPAF SAKPOR005



Pink PPAF SAKPOR003



Rose PPAF SAKPOR001



White PPAF SAKPOR006



Decorative Mix

Quality Vegetables for the Home Garden

Sakata Home Grown, a vegetable seed division at Sakata America, is committed to offering dedicated service, comprehensive support and superior products to our customers. We have a fantastic line-up of great tasting, productive and easy-to-grow vegetables that consumers crave. Here are three of our must-have varieties:

Aspabroc

F1 Baby Broccoli

- Known as Broccolini® in the produce section of your grocery store and on restaurant menus
- Offers a mild taste, is easy to grow and requires little space
- Matures in 50 – 60 days—plants set 3 – 5 side shoots and continue for a month or more in mild weather



Aspabroc
Broccolini® is a registered trademark of Mann Packing Co., Inc.

Peppermint

Swiss Chard

- Highly ornamental plants boast pure white petioles with vibrant pink streaks
- Great for specialty produce or mixed with flowers like Candy Showers Rose snapdragon and Grandio pansy
- Performs well across multiple seasons
- Matures in about 58 – 63 days



Peppermint

Red Robin

Cherry Tomato

- A must-have for every home garden and container plant program!
- Very compact, well-branching plants provide good cover and high yields
- Compact plants are suitable for sales in 4 – 6-inch, baskets and patio pots
- Matures in about 55 days from transplant



Red Robin



Visit our website!
www.sakatavegetables.com

Find our dedicated section by clicking on the Home Grown tab on the far right of the navigation bar. Our catalog and other publications are all available for download. And keep coming back to see what's new—we are constantly updating and adding new information!



Seed Product Forms

Performax® Highest Quality / Precision Graded

- Uniform seed size for easier sowing
- Higher germination
- High number of usable plants

Primax® Primed Seeds

- Faster germination
- Enhances crop uniformity
- Improves germination under stressful conditions or fluctuating temperatures
- High number of usable plants
- Treated to avoid fungi problems

Filmcoat

- Seeds are highly visible for quality control
- Improved flowability for fast, accurate seed placement and singulation
- Dust free



Untreated seed on the left, Filmcoat seed on the right

Encrusted

- Increases seed size by 10 to 100%
- Improves seed shape for fast, accurate seed placement and singulation



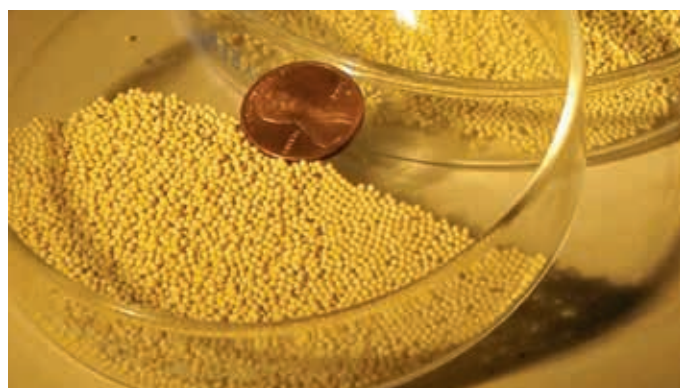
Multi-Pellet

- Several seeds per pellet allows for multiple seed sowing in one pass
- Increases efficiencies on sowing line



Pelleted

- Increases singulation for small-sized seeds
- Pellet dissolves easily; germinates as raw seed
- Enhanced visibility for quality control at sowing



Ageratum.....	8
Anemone.....	8
Aster.....	9
Begonia.....	12
Bellis.....	15
Calceolaria.....	16
Calendula.....	17
Calibrachoa.....	81
Campanula.....	17
Carnation.....	20
Celosia.....	21
Cineraria.....	24
Coleus / Seed.....	25
Coleus / Vegetative.....	82
Crossandra.....	82
Delphinium.....	26
Dianthus.....	27
Flowering Cabbage.....	28
Flowering Kale.....	28
Gerbera.....	29
Gloxinia.....	33
Godetia.....	35
Gomphrena / Seed.....	36
Gomphrena / Vegetative.....	83
Gypsophila.....	36
Hypoestes.....	37
Impatiens.....	84
Ipomoea.....	28
Lisianthus.....	39
Mecardonia.....	89
Mimulus.....	46
Nemesia.....	89
Ornamental Pepper.....	46
Osteospermum.....	90
Oxalis.....	91
Pansy.....	47
Petunia / Seed.....	52
Petunia / Vegetative.....	92
Platycodon.....	54
Poppy.....	55
Portulaca / Seed.....	55
Portulaca / Vegetative.....	97
Primula.....	56
Shasta Daisy.....	63
Snapdragon.....	64
Stock.....	70
Sunflower.....	73
Torenia.....	75
Vegetables.....	98
Vinca.....	76
Viola.....	77
Zinnia.....	79



Proud Mari Marigold—Coming Soon!

Sneak Peek!

Four new series are coming down the pipeline!
Seed of these beauties will be available in 2015.

Proud Mari MARIGOLD

- Less day-length sensitive than others
- Naturally dwarf plants fit perfectly on racks—little to no PGRs required
- Strong, sturdy necks proudly support full flowers

Disco Belle HIBISCUS (Making a come-back!)

- Early flowering for faster cropping
- Huge, plate-sized flowers make for instant impact and strong sell-thru
- Seed perennial with maximum value

Springdale RANUNCULUS

- Medium height, slightly more compact than the original Bloomingdales
- Very uniform plant habit and flowering time
- De-winged, encrusted seeds for easy sowing and great germination

New! VINCA (Name coming soon)

- Early, very uniform flowering across all colors
- A vigorous O.P. series that performs well under hot, sunny conditions
- Large overlapping petals for maximum color



SAKATA®

Sakata Ornamentals

P.O. Box 880

Morgan Hill, CA 95038

408.778.7758

www.sakataornamentals.com