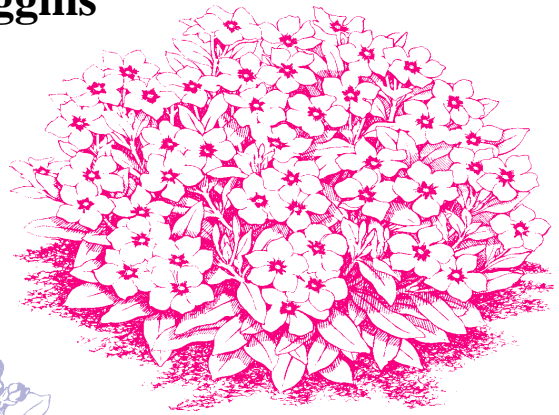


1998
NORTH CAROLINA STATE UNIVERSITY
BEDDING PLANT TRIAL GARDEN
REPORT

by
Douglas A. Bailey
Floriculture Research and Extension
with technical assistance from
Bernadette Clark, Ingram McCall,
and **Holly Scoggins**



Department of Horticultural Science
North Carolina State University
Raleigh, North Carolina
Horticultural Research Series No. 133

Table of Contents

Introduction	Page 1
Explanation of Cultivar Evaluations	3
Sources of Seeds and Plants	4
N.C. State Leaders of the Pack Recipients	5
NCSU Exceptional Performance Winners	6
Species Summaries:	
Ageratum	8
Amaranthus	8
Begonia	8
Bloodflower	9
Browallia	9
Calendula	9
Cat Whiskers	9
Celosia	9
Centaurea	9
Coleus	9
Csomos	9
Dahlia	9
Dianthus	10
Erigeron	10
Felicia	10
Fuchsia	10
Gazania	10
Geraniums from cuttings	10
Geraniums from seed	10
Gypsophila	11
Hypoestes	11
Impatiens	11
Jumbo Outback Daisy	11
Linaria	11

	Page
Species Summaries, continued:	
Lisianthus	11
Lobelia	12
Marigold	12
Melampodium	12
Mexican Sunflower	12
Narrow-Leaf Zinnia	12
New Guinea Impatiens	12
Nicotiana	13
Osteospermum	13
Outback Paper Daisy	13
Pentas	13
Petunia	13
Phlox	14
Plectranthus	14
Portulaca	14
Primula	14
Red Hot Poker	14
Rudbeckia	14
Salvia	14
Scaevola	15
Setcreasea	15
Snapdragon	15
Statice	15
Sunflower	15
Sweet Potato	15
Torenia	15
Trachelium	15
Verbascum	15
Verbena	15
Vinca	16
Zinnia	16
 Weekly Evaluation Ratings	 17

Introduction

Over 515 entries of annual plants were evaluated during the 1998 bedding plant season at test gardens in Raleigh, North Carolina. The trial gardens are used each year to evaluate bedding plants for landscaper and home owner use.

The trial gardens are located at the Horticulture Field Lab, 4301 Beryl Road, in Raleigh. The site is located on latitude 35°47'N, longitude 78°42'W with an elevation of 400 feet. Transplants were grown in 2.5 inch × 2.2 inch containers, and most were planted in the trial garden on 12 May 1998. A few slower selections were planted when ready. Plant spacing in the trials was 18 inches × 24 inches (in-row × between-row spacing). Seven plants of each entry were used to evaluate the performance of the cultivars with the exception of All America Selections judged entries, which had 14 plants each.

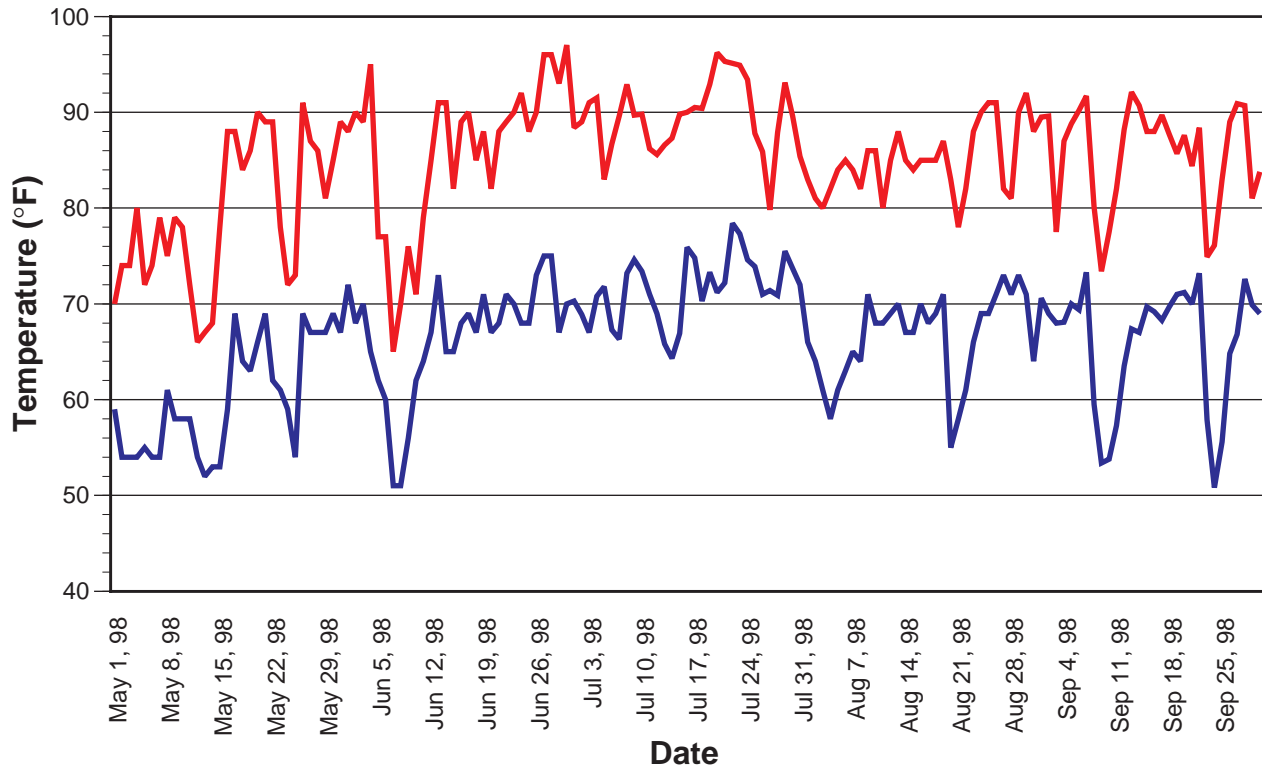


Figure 1. Daily minimum and maximum temperatures for Raleigh, North Carolina from May 1 through September 30, 1998.

Table 1. Solar energy, temperature and precipitation from May through September 1998 and 30 year temperature and precipitation averages for Raleigh, N.C.

Month	Daily average solar radiation received (Langley/day)	Daily average temperature (°F) and percent change from 30 year avg	30 year average daily temperature (°F)	Monthly precipitation (inches) and percent change from 30 year avg	30 year average monthly precipitation (inches)
May	688	69.5 (+2%)	68.1	3.66 (-13%)	4.22
June	778	76.3 (+2%)	74.9	3.13 (-16%)	3.73
July	754	80.5 (+2%)	78.8	0.59 (-88%)	4.84
August	710	75.3 (-3%)	78.0	7.47 (+65%)	4.52
September	620	75.8 (+5%)	72.1	4.51 (+17%)	3.85

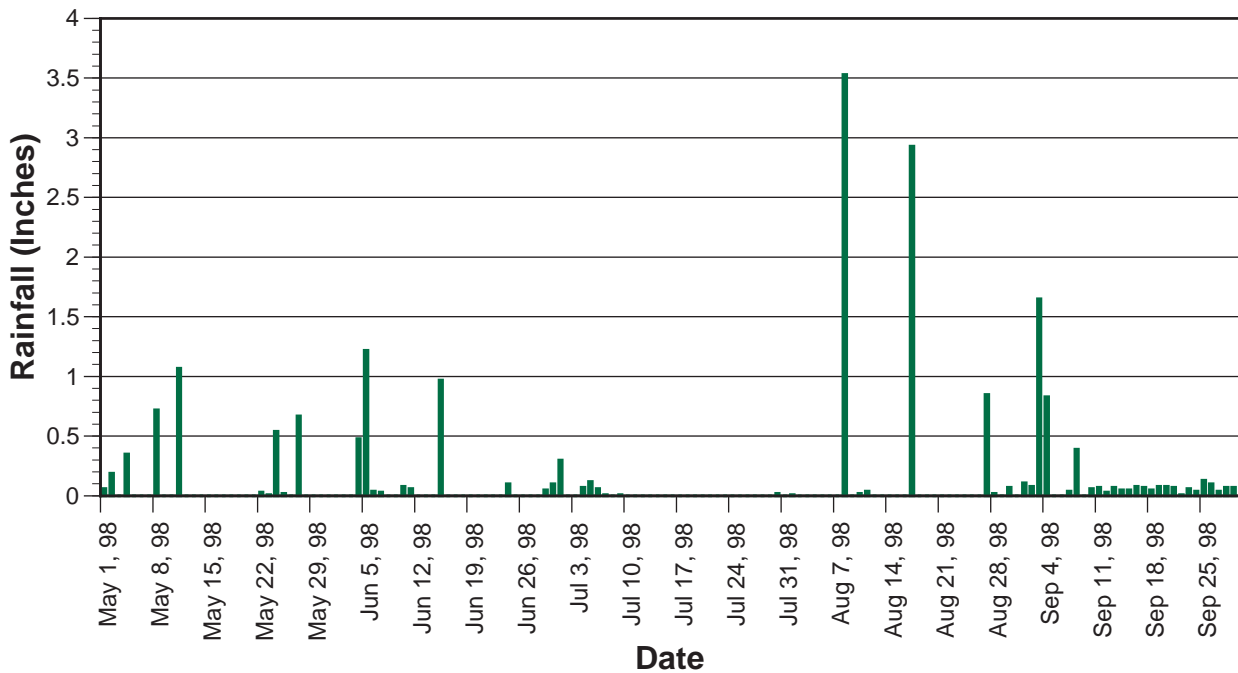


Figure 2. Rainfall received from May 1 through September 30, 1998.

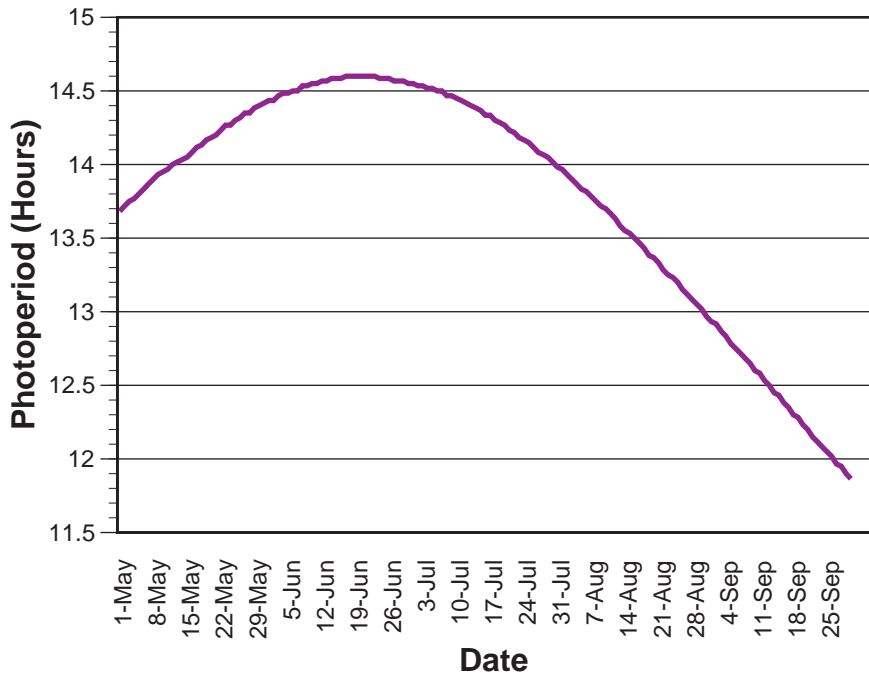


Figure 3. Photoperiod (sunrise to sunset) from May 1 through October 2.

All plants were grown in full sun except for begonia, browallia, felicia, fuchsia, hypoestes, impatiens, New Guinea impatiens, primula, setcreasea, and torenia; these were grown under 55% shade. When needed, water was applied using overhead irrigation.

Temperatures were slightly warmer than normal during May–July and during September; they were slightly below normal during August (Table 1, Figure 1). Looking at the entire five month season, temperatures averaged 75.5 °F, which is about 1.5% above normal (74.4 °F is our 30 year average daily temperature for May–September).

Rainfall received during the 5-month period (19.36 inches) was below our average of 21.2 inches (Table 1 and Figure 2) and much below our record 35.3 inches of rainfall during the

1996 season. May and June were dryer than average; July was extremely dry. August was well above average, and September was above average for rainfall.

Beds were pretreated with Basamid® for weed control prior to planting. Fertilizer was applied as a preplant incorporation and as dry applications during the bedding plant season. No insecticide applications were made during the evaluation in order to document major pest problems. No major pests were noted during the 1998 season, however the Japanese beetle population seems to increase every year in the gardens. Plant diseases were less prevalent in 1998 than in 1997 or 1996. The lack of rainfall may have accounted for the reduction in diseases such as *Rhizoctonia* that sometimes present a problem. The major disease problems included Botrytis blight and bacterial leaf spot on geraniums.

Explanation of Cultivar Evaluations

Plants were given a visual rating by the same individual once a week beginning 3 June 1998, three weeks after planting through 19 weeks after planting; the final evaluation date was 23 September 1998. The rating was based on plant performance and appearance, including floriferousness, plant size and shape, and freedom from insect and disease problems. The rating scale used ranged from 1 (very poor) to 5 (excellent), with 0.5 unit increments; a 0 rating indicates all seven plants of the cultivar died. Weekly ratings were averaged (season average rating column in performance table) to provide an overall rating for the entire season. We used the seasonal average ratings to select the N.C. State Leaders of the Pack and the NCSU Exceptional Performance Winners. In addition to a numeric value indicating plant performance, a plus or minus value was given to indicate whether or not the plants were in flower. A dash after the numeric value in the performance table indicates that less than 50% of the plants were flowering that week. Average plant height and diameter data were taken for each cultivar during the last week of July, and this information (in inches) appears in the last two columns of the cultivar evaluation table. We believe that a mid-season plant size is a better representation of the plant appearance than end-of-season measurements, since many bedding plants decline in flowering and quality prior to the last week of evaluations.

The performance table is organized alphabetically by common names and in descending order within each species for overall seasonal average rating. A cultivar that received a seasonal average rating of 3.2 or above is considered an excellent choice for full-season (May through September) color. A seasonal average rating of 2.8 or above indicates the cultivar is a satisfactory choice for full-season color. A seasonal rating below 2.8 indicates the cultivar should not be used for full-season color, and the weekly ratings should be examined for peak performance periods. For example, a cultivar may have received an overall rating of 2.3, indicating it is not a good choice for full-season color, yet received weekly ratings of 2.8 and above during the spring/early summer. This suggests that the cultivar is a satisfactory choice for spring color, but not summer color. A decline during the summer indicates that a cultivar should be removed and replaced by a more heat and humidity tolerant selection for continuous bed color throughout the season.

Visit the NCSU Floriculture Home Page at:
<http://www2.ncsu.edu/floriculture/>

- 🍏 *Visit the NCCFGA pages at this site*
- 🍏 *Download the latest floriculture extension publications such as New Guinea Impatiens Production and Hydrangea Production*
- 🍏 *Download NCSU research publications such as the Bedding Plant Trial Summaries*
- 🍏 *Download Floriculture software such as the NCSU Plant Growth Regulator Calculator*
- 🍏 *View the latest Entomology Department Insect Notes for greenhouse pest control*

Sources of Seeds and Plants

The following companies graciously sponsored the 1998 trial gardens. The companies are acknowledged in the ratings table and in the listings by the abbreviation that appears to the left of the company name. Appreciation is also given to Fafard, Inc. and to the North Carolina Commercial Flower Growers' Association for their contributions towards the trials.

- **AAS** All-America Selections, 1311 Butterfield Road, Suite 310, Downers Grove, IL 60515
- **AT** American Takii, Inc., 301 Natividad Road, Salinas, CA 93906
- **BALL** Ball Seed Co., P.O. Box 335, West Chicago, IL 60185
- **BCG** Bear Creek Gardens, P.O. Box 9100, Medford, OR 97501
- **BEN** Ernst Benary of America, Inc., 1444 Larson Street, Sycamore, IL 60178
- **BFP** BallFloraPlant, 622 Town Road, West Chicago, IL 60185
- **BG** Bodger Seeds Ltd., 1800 North Tyler Avenue, Lompoc, CA 91733 3618
- **BWN** Berylwood Nursery, Inc., P.O. Box 2, Lexington, NC 27293-0002
- **DHN** Dæhnfeldt Inc., P.O. Box 947, Albany, OR 97321 98664
- **ECKE** Paul Ecke Ranch, P.O. Box 230488, Encinitas, CA 92023-0488
- **FIS** Fischer USA, Inc., 2955 Balmont Road Suite 110, Boulder, CO 80301
- **FN** Floranova, 106 Third Street, P.O. Box 1362, San Juan Bautista, CA
- **GOLD** Goldsmith Seeds, Inc., P.O. Box 1349, Gilroy, CA 95020
- **GRS** Grimes Seeds and Plants, 11335 Concord-Hambden, Concord, OH 44077
- **HWN** Homewood Nursery, 10809 Honeycutt Rd., Raleigh, NC 27614
- **NCSU** Department of Horticultural Science, Box 7609, North Carolina State University
- **NOV** Novartis Flower Seeds, Inc., 5300 Katrine Avenue, Downers Grove, IL 60515-4095
- **OGL** Oglevee, Ltd., 152 Oglevee Lane, Connellsville, PA 15425
- **PA** PanAmerican Seed Co., P.O. Box 438, West Chicago, IL 60185

N.C. State Leaders of the Pack

The following were selected in 1998 on their ability to display attractive landscape color throughout the majority of the bedding plant season. At any one time, other species or entries may have made a better short-term showing, but the "Leaders of the Pack" were selected for consistent, dependable full-season performance as a source of color and beauty in the landscape. The cultivar source is shown in parenthesis.

Ageratum

'Blue Hawaii' (BG)

Begonia (Fibrous)

Coral: 'Super Olympia Coral' (BEN)

Mix: 'Harmony Mix' (BALL), 'Super Olympia Mix' (BEN), 'Espresso Mix' (DHN)

Pink: 'Prelude Pink' (BALL), 'Eureka Green Leaf Pink' (NOV), 'Ambassador Pink' (DHN), 'Super Olympia Pink' (BEN), 'Victory Green Leaf Pink' (GOLD), 'Senator Pink' (DHN)

Red: 'Dragonwing' (PA), 'Vodka' (BEN), 'Super Olympia Red' (BEN), 'Senator Scarlet' (DHN)

Rose: 'Super Olympia Rose' (BEN), 'Senator Rose w/ White Center' (DHN), 'Inferno Rose' (DHN), 'Eureka Bronze Leaf Rose' (NOV)

White: 'Eureka Bronze White' (NOV), 'Inferno White' (DHN), 'Victory Green Leaf White' (GOLD)

Bloodflower

'Orange' (BWN), 'Silky Gold' (BWN)

Celosia

'Prestige Scarlet' (SAK), 'New Look' (BEN)

Coleus

'Alabama Sunset' (BWN), 'Lime Queen' (BWN), 'Gay's Delight' (BWN), 'Camellia' (BWN), 'Black Opal' (BWN)

Dianthus

'Diamond Purple' (SAK)

Fuchsia

'Cascading' (BCG)

Geraniums From Cuttings

Pink: 'Jessica' (OGL)

Red: 'Designer Red' (BFP)

Salmon: 'Schoene Helena' (FIS)

Geraniums From Seed

White: 'Maverick White' (GOLD)

Hypoestes

'Confetti Mix' (DHN)

Impatiens

Blue/Violet: 'Accent Lilac' (GOLD), 'Dazzler Lilac Splash' (BALL), 'Mosaic Lilac' (GOLD)

Coral: 'Accent Coral' (GOLD)

Impatiens, continued

Mix: 'Dazzler Star Mix' (BALL), 'Showstopper Sweetness' (BALL)

Orange: 'Carnival Orange' (DHN), 'Deco Orange' (PA)

Pink: 'Cajun Carmine' (NOV), 'Impulse Deep Pink' (NOV), 'Carnival Pink' (DHN)

Red: 'Impulse Red' (NOV), 'Super Elfin Raspberry' (PA), 'Tempo Burgundy' (BG)

Rose: 'Mosaic Rose' (GOLD), 'Accent Bright Eye' (GOLD)

White: 'Accent White' (GOLD), 'Tempo White' (BG), 'Carnival White' (DHN), 'Fiesta White' (BFP)

Marigold

'Durango Orange' (PA), 'Safari Tangerine' (BG)

Narrow-Leaf Zinnia

'Crystal White' (AT)

New Guinea Impatiens

Blue: 'Celebration Lavender Glow' (BFP), 'Paradise Guadeloupe' (ECKE)

Orange: 'Paradise Timor' (ECKE)

Orange/Red: 'Paradise Antiqua' (ECKE), 'Pure Beauty Apollon' (ECKE)

Pink: 'Paradise Tonga' (ECKE), 'Paradise Pascua' (ECKE), 'Paradise Woya' (ECKE)

Red: 'Paradise Tarawa' (ECKE), 'Pure Beauty Marpesia' (ECKE)

Rose: 'Pure Beauty Aglia' (ECKE), 'Celebration Rose' (BFP)

White: 'Deka White' (OGL), 'Paradise Samoa' (ECKE)

Petunia

Blue/Purple: 'Misty Lilac Wave' (PA), 'Purple Wave' (AAS), 'Surfinia Purple' (BCG), 'Trailblazer Violet' (NOV), 'Hurrah Plum' (NOV)

Pink: 'Surfinia Pastel Pink' (BCG), 'Surfinia Brilliant Pink' (BCG)

Rose: 'Rose Wave' (PA), 'Liricashower Rose' (SAK), 'PrimeTime Rose' (GOLD)

Petunia, continued

White: 'Surfinia White' (BCG)

Plectranthus

'Silver' (BWN), 'Variegata' (BWN)

Salvia

Blue: 'Reference' (BEN), 'Signum' (BG)

Purple: 'Purple Vista' (PA), 'Salsa Light Purple' (GOLD), 'Lavender Vista' (PA)

Red: 'Red Hot Sally' (BALL), 'Red Vista' (PA)

Red/White: 'Salsa Scarlet Bicolor' (GOLD)

Rose: 'Salsa Rose' (GOLD)

White: 'White Vista' (PA)

Scaevola

'Outback Purple Fan' (ECKE)

Sweet Potato

'Pink Frost' (BWN), 'Blackie' (BWN), '99' (NCSU), 'Sulfur' (BWN)

Torenia

'Blue' (BCG)

Verbena

Blue/Purple: 'Temari Violet' (BCG), 'Tapien Blue Violet' (BCG), 'Polaris' (BEN), 'Tapien Lavender' (BCG),
'Tapien Powder Blue' (BCG)

Pink: 'Tapien Soft Pink' (BCG)

Red: 'Quartz Scarlet' (PA), 'Temari Red' (HWN)

Vinca

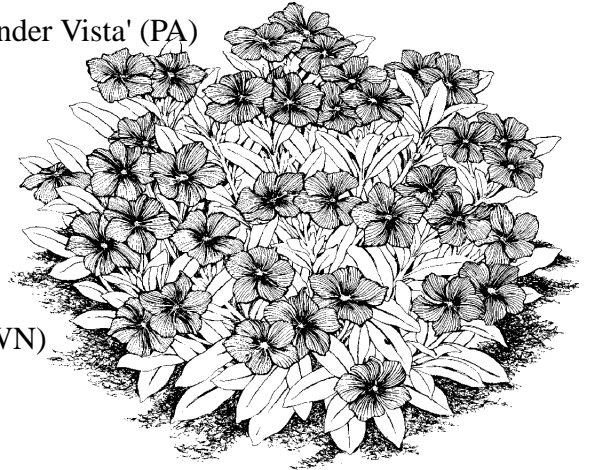
Pink: 'Raspberry Red Cooler' (PA)

Red: 'Pacifica Red' (AAS)

Rose: 'Rose Cooler' (PA)

Zinnia

'Profusion Orange' (SAK), 'Profusion Cherry' (SAK)



NCSU Exceptional Performance Winners

Each year, the best of the best, those cultivars that exemplify outstanding performance during the trials, will be recognized as Exceptional Performers. The winners are judged on full-season performance and are recommended as outstanding selections for our region. Growers, retailers and landscapers are encouraged to consider these cultivars first for their color needs. Only five cultivars were selected from 517 entries in the 1998 trial garden. The seasonal average score and the source of the plants are given for each winner:

1998 Winners

- 1. *Petunia*, 'Surfinia Pastel Pink' (4.4; Bear Creek Gardens)**
- 2. *Petunia*, 'Rose Wave' (4.4; PanAmerican Seed Company)**
- 3. *Petunia*, 'Misty Lilac Wave' (4.4; PanAmerican Seed Company)**
- 4. *Begonia*, 'Dragonwing' (4.3; PanAmerican Seed Company)**
- 5. *Scaevola*, 'Outback Purple Fan' (4.3; Paul Ecke Ranch)**

1997 Winners

1. *Begonia*, 'Ambassador Rose Blush' (4.6; Dæhnfeldt Inc.)
2. *New Guinea Impatiens*, 'Paradise Aruba' (4.6; Paul Ecke Ranch) -- from cuttings
3. *Sweet Potato*, 'Sulfur' (4.6; NC State University) -- from cuttings
4. *Begonia*, 'Inferno Red' (4.5; Dæhnfeldt Inc.)
5. *Begonia*, 'Eureka Bronze Rose' (4.5; Novartis Flower Seeds, Inc.)
6. *Zinnia*, 'Profusion Orange' (4.5; Sakata Seed America, Inc.)

1996 Winners

1. *Evolvulus* (*Evolvulus glomeratus grandiflorus*), 'Blue Daze' (4.8; Homewood Nursery) -- from cuttings
2. *Spur Flower* (*Plectranthus fosteri* 'marginatus'), (4.5; Homewood Nursery) -- from cuttings
3. *Mexican Heather* (*Cuphea hyssopifolia*), (4.4; Homewood Nursery) -- from cuttings
4. *Impatiens*, 'Accent Red' (4.3; Goldsmith Seeds, Inc.)
5. *Impatiens*, 'Super Elfin White Improved' (4.3; PanAmerican Seed Co.)
6. *Impatiens*, 'Super Elfin Melon' (4.3; PanAmerican Seed Co.)
7. *Vinca*, 'Peppermint Cooler' (4.3; PanAmerican Seed Co.)
8. *Vinca*, 'Icy Pink Cooler' (4.3; PanAmerican Seed Co.)

1995 Winners

1. *Petunia*, 'Purple Wave' (4.6; Homewood Nursery) -- from cuttings
2. *Petunia*, 'Purple Wave' (4.4; PanAmerican Seed Co.) -- from seed
3. *Verbena*, 'Homestead Purple' (4.4; Plant Delights Nursery) -- from cuttings
4. *Evolvulus* (*Evolvulus glomeratus grandiflorus*), 'Blue Daze'
(4.4; Homewood Nursery) -- from cuttings

1994 Winners

1. *Salvia*, 'Cover Girl' (4.7; Ernst Benary of America, Inc.)
2. *Vinca*, 'Pretty In Rose' (4.6; Denholm Seeds)
3. *Salvia*, 'Lady In Red' (4.6)
4. *Hypoestes*, 'Pink Splash' (4.6; PanAmerican Seed Co.)
5. *Salvia*, 'Sizzler Lavender' (4.6; Clause Semences Professionnelles)
6. *Salvia*, 'Rhea' (4.6; Clause Semences Professionnelles)

1993 Winners

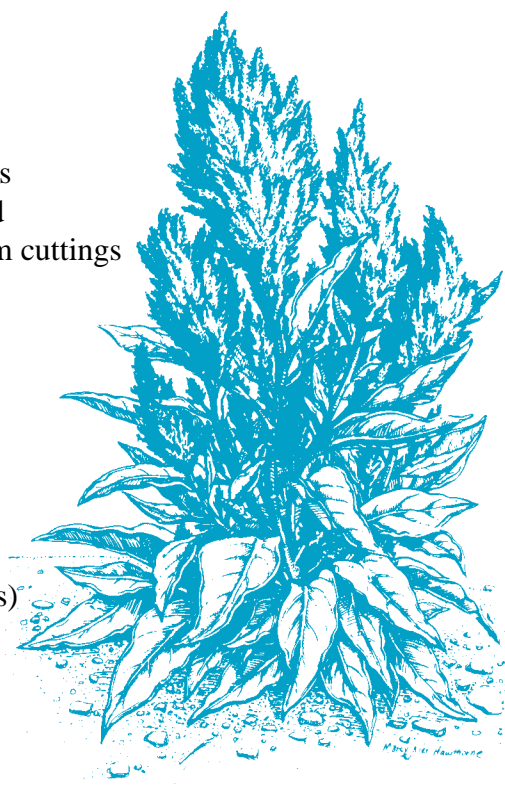
1. *Vinca*, 'Hot Streak Salmon' (4.8; G.S. Grimes Seeds)
2. *Impatiens*, 'Accent Lilac' (4.8; Goldsmith Seeds, Inc.)
3. *Begonia*, 'Stara Clear Rose' (4.8; Clause Semences Professionnelles)

1992 Winners

1. *Globe Amaranth*, 'Lavender Lady' (4.7)
2. *Evolvulus* (*Evolvulus glomeratus grandiflorus*), 'Blue Daze' (4.7; Homewood Nursery) -- from cuttings
3. *Mexican Heather* (*Cuphea hyssopifolia*) (4.6; Homewood Nursery) -- from cuttings
4. *Begonia*, 'All Round Greenleaved Pink' (4.6; Dæhnfeldt Inc.)

1991 Winners

1. *Evolvulus* (*Evolvulus glomeratus grandiflorus*), 'Blue Daze' (4.7; Homewood Nursery) -- from cuttings
2. *Mexican Heather* (*Cuphea hyssopifolia*) (4.7; Homewood Nursery) -- from cuttings
3. *Begonia*, 'All Round Greenleaved White' (4.5; Dæhnfeldt Inc.)
4. *Begonia*, 'Rio Pink' (4.5; Novartis Flower Seeds, Inc.)



1990 Winners

1. *Globe Amaranth*, 'Dwarf Buddy' (4.5)
2. *Vinca*, 'Grape Cooler' (4.5; PanAmerican Seed Co.)
3. *Impatiens*, 'Impulse Bright Eye' (4.4; Novartis Flower Seeds, Inc.)
4. *Celosia*, 'New Look' (4.4; Ernst Benary of America, Inc.)

Species Summaries

Ageratum

Usually, ageratum begins to decline in July with the onset of midsummer heat and thunderstorms, but this year was an exception; very dry in mid-summer. 'Blue Hawaii' was an excellent plant in our trials for the fourth year in a row.

Amaranthus

There is always room for new bedding plants and new sources of color for the annual garden. Amaranthus offers brilliantly colored foliage, but under our conditions, plants began to decline in appearance beginning in mid-July. Up to that point, they were very attractive.

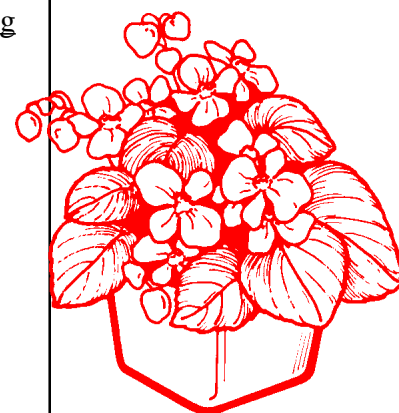
Begonia

Fibrous-rooted begonias are traditionally our most dependable bedding plant. This year they lived up to their track record. We trialed 49 varieties as compared with 54 in 1997. 'Eureka', a fairly compact begonia, was the best performing series followed closely by 'Super Olympia'.

Series average ratings, mid-season heights and diameters are given above and highest rated cultivars of each leaf and flower color are listed below. 'Dragonwing', an angelwing flowered cultivar was an Exceptional Performance Winner in 1998.

<u>Begonia Series Ratings</u>					
<u>Series</u>	<u>Number trialed</u>	<u>Source</u>	<u>Rating</u>	<u>Height (inches)</u>	<u>Diam. (inches)</u>
Eureka	3	NOV	3.8	14.7	19.2
Super Olympia	6	BEN	3.7	15.8	19.7
Inferno	6	DHN	3.4	18.6	23.2
Senator	6	DHN	3.3	14.8	19.1
Victory	8	GOLD	3.3	13.0	15.8
Ambassador	9	DHN	3.2	15.2	16.7

<u>Best Performing Begonia Cultivars</u>					
<u>Leaf Color</u>	<u>Flower Color</u>	<u>Cultivar</u>	<u>Source</u>	<u>Rating</u>	
Green	Coral	Super Olympia Coral	BEN	3.7	
	Mix	Super Olympia Mix	BEN	3.8	
	Pink	Prelude Pink	BALL	4.1	
	Red	Dragonwing	PA	4.3	
	Rose w/ White	Victory G. L. Rose Bicolor	GOLD	3.5	
	Rose	Super Olympia Rose	BEN	3.9	
Bronze	White	Inferno White	DHN	3.6	
	Mix	Harmony Mix	BALL	3.9	
	Pink	Senator Pink	DHN	3.6	
	Red	Vodka	BEN	3.9	
	Rose w/ White	Senator Rose w/White Ctr.	DHN	3.9	
	Rose	Inferno Rose B.F.	DHN	3.7	
	White	Eureka Bronze Leaf White	NOV	3.7	



Bloodflower

Butterfly weed is a well-known flower in the Southeast, yet few are familiar with the close relative bloodflower (tropical butterfly weed), *Asclepias curassavica*. Both the orange- and the gold-flowered plants reached a height of 3.5 feet and bloomed all summer long. They are easy to propagate from both seed and cuttings and are quite useful as a tall backdrop for the sun flower bed.

Browallia

There is always room for more sources of color for use in a shadey location. Unfortunately, browallia is not well-suited for summer in the Southeast.

Calendula

Calendula are wonderful spring and early summer flowers. Unfortunately they decline rapidly during the heat of mid-summer. All plants were dead by mid-August.

Cat Whiskers

Orthosiphon aristatus is an interesting white-flowered tall (29 inches) plant for full sun sites. It makes an excellent backdrop for shorter flowering annuals and should be added to the dependable annual list of gardeners and landscapers alike.

Celosia

'Prestige Scarlet' and 'New Look' both did very well all summer long. In past trials, celosia entries would cease flowering in September, but that was not the case this year and all celosia continued to flower up through the final week of the trials.

Centaurea

These compact plants did not survive our mid-summer heat. As with calendula, centaurea is best utilized as a spring and early summer source of color for our conditions. Unfortunately, our trials are not in place early enough in the spring to evaluate true spring annuals.

Coleus

There is a tremendous selection of vegetatively propagated coleus that hold up equally well in full sun as in heavy shade. We trialed 21 varieties; just a portion of what is in the trade. The major problem with evaluating coleus in a trial is describing the color scheme. How do you categorize leaf colors and shades that are as subtle as coleus? The top performing cultivars in our trials were 'Alabama Sunset' (rust colored with lime flecks along the edge; younger leaves starting out all green; large ovate leaves have crenate margins), 'Lime Queen' (lime leaves; dark burgundy veins, undersides, and stems; ovate leaves have crenate margins), and 'Gay's Delight' (bright lime with burgundy / dark purple developing from some of the veins outward; ovate leaves have crenate margins). Most of the varieties were free from flowers until the end of July (denoted by a dash after the weekly rating number). Some such as 'Black Magic', 'Blusher', 'Camellia', 'Gay's Delight', 'Max Levering', and 'Yellow in Sun' did not flower the entire season. The lack of flowering is desirable, as flower stalks are unattractive and should be removed from plants. If you have not seen the "new age" coleus, you are missing out on spectacular landscape color for sun and shade.

Cosmos

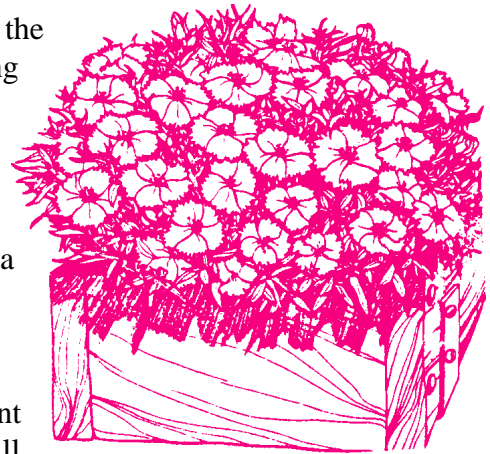
Cosmos are best used as early summer then again as autumn sources of color. Plants cannot withstand the high temperatures of mid-summer in the Southeast.

Dahlia

Dahlias are another early season source of color that do not fare well once temperatures begin to rise.

Dianthus

The dianthus performed well once again this year. It appears that the newer cultivars are more heat tolerant and can offer some color during the summer months. 'Diamond Purple' was attractive enough to warrant notation as a Leader of the Pack for 1998.



Erigeron

These compact plants offered mid-season color, but were never a source of high-impact color.

Felicia

Felicia is another example of a spring / early summer bedding plant that simply cannot tolerate summer conditions in the Southeast. All plants had died by early July.

Fuchsia

Fuchsia is perhaps best known as a flowering hanging basket plant. This year, the two bedding plant entries were evaluated in shade conditions. Both did well during early summer, but flowering was very sporadic during mid-summer; plants began to flower once again in September.

Gazania

Gazanias have historically performed poorly in our trials. None of the plants flowered consistently, and all plants had died by mid-June.

Geraniums from Cuttings

There were 61 cultivars of geraniums grown from cuttings in our 1998 trials. We did encounter some bacterial leaf spot starting in late July. There are many advances being made by breeders of cutting geraniums with respect to flower color and plant compactness. However, geraniums (from seed or cuttings) are still

a labor-intensive bedding plant in our area requiring continuous dead heading to reduce Botrytis and to maintain flowering. The best performing cultivars of each flower color are given above.

Best Performing Cultivars of Geraniums from Cuttings

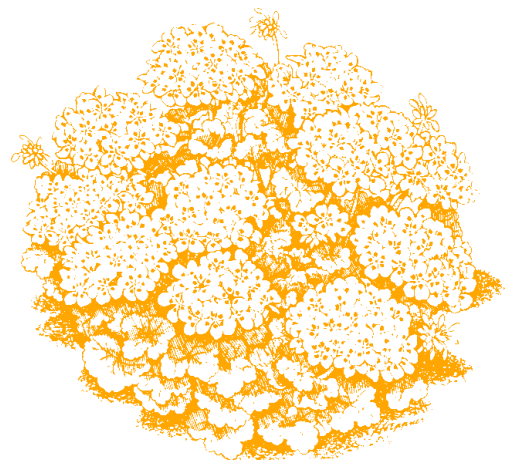
<u>Flower Color</u>	<u>Cultivar</u>	<u>Source</u>	<u>Rating</u>
Lavender	Designer Lilac Chiffon	BFP	3.1
Pink	Jessica	OGL	3.2
Red	Designer Red	BFP	3.6
Salmon	Schoene Helena	FIS	3.2
White	Lotus	FIS	3.1

Geraniums from Seed

There were 17 cultivars of seed geraniums in the 1998 trials and the highest rated of each flower color is listed below. Maverick was the only series with three or more entries (avg. = 2.3; ht. = 9"; diam. = 17").

Best Performing Cultivars of Geranium from Seed

<u>Flower Color</u>	<u>Cultivar</u>	<u>Source</u>	<u>Rating</u>
Pink	Maverick Pink	GOLD	2.7
Violet	Maverick Violet	GOLD	2.9
White	Maverick White	GOLD	3.3



Gypsophila

The novel small-flowering 'Garden Bride' and 'Gypsy' were very attractive until early August, similar to performance the last three years. They are an interesting addition to the early summer bedding plant array, but will not supply full-season color.

Hypoestes

Polka dot plants have been gaining more attention as bedding plants. Hypoestes are grown for their attractive foliage and not the small, inconspicuous flowers. Plants of 'Confetti Mix' stayed compact and are a useful source of color for the shade bed.

Impatiens

The number of impatiens cultivars continues to increase. In 1994, we trialed 38 cultivars. That number has increased, and in 1998 we trialed 69 varieties. Impatiens rank very high as a bedding plant choice with consumers and its not surprising when you look at their landscape performance. All of the cultivars we tested in 1998 were acceptable choices for full-season

<u>Series</u>	<u>Number trialed</u>	<u>Source</u>	<u>Rating</u>	<u>Height (inches)</u>	<u>Diam. (inches)</u>
Accent	17	GOLD	3.4	25	24
Cajun	4	NOV	3.3	23	24
Carnival	10	DHN	3.3	26	24
Dazzler	7	BALL	3.4	22	24
Fiesta	3	BFP	3.4	22	24
Impulse	6	NOV	3.4	25	24
Showstopper	3	BALL	3.3	25	24
Super Elfin	5	PA	3.3	22	24
Tempo	8	BG	3.3	24	24

color (rated 2.8). All but 20 (72%) were considered excellent choices for full season color (rated 3.2). The

<u>Flower Color</u>	<u>Cultivar</u>	<u>Source</u>	<u>Rating</u>
Coral	Accent Coral	GOLD	3.9
Orange	Carnival Orange	DHN	3.8
Red&White	Mosaic Rose	GOLD	4.1
Red	Impulse Red	NOV	3.8
	Super Elfin Raspberry	PA	3.8
White	Accent White	GOLD	4.0
	Tempo White	BG	3.8

series ratings (with at least three entries per series) are listed above. The Accent series were rated highest. There was actually very little difference between series performance this year (note the range was 3.4 to 3.3). About the only noticeable growth habit difference is the relative compactness of Super Elfin as compared to the rest. Since rows of plants are two feet apart, the maximum width possible is 24". The best performing cultivars for each color are listed to the left.

Jumbo Outback Daisy

Brachycome segmentosa is a very low-growing plant that was very floriferous during the first two thirds of the trials. However, flowering was very sporadic beginning in mid-August. This decline may have been associated with a 3.5" rain event during this time period.

Linaria

Linaria is another spring / early summer annual that cannot hold up in our heat of summer. Though very attractive during the early season, all plants died by mid-August.

Lisianthus

The lone lisianthus entry, 'Florida Blue', did not fare well in our trials. Plants were only in flower for about 8 weeks. Lisianthus rarely do well all summer long in our trials, but they are very showy when they are in bloom.

Lobelia

Lobelia usually does well in our trials, but not this year. Plants of 'Fan Scarlet' died in late June, and plants of 'Fan Deep Rose' did not begin to bloom consistently until late August.

Marigold

Marigolds continue in their popularity, and we trialed 19 entries in 1998. Plants were most attractive during early and mid-season, with peak blooming occurring during late July and throughout August. Dead heading (removal of spent inflorescences) is an essential labor input to maintain attractive marigolds in the landscape.

Marigold Series Ratings

<u>Series</u>	<u>Number trialed</u>	<u>Source</u>	<u>Rating</u>	<u>Height (inches)</u>	<u>Diam. (inches)</u>
Antigua	4	GOLD	2.4	12	21
Durango	3	PA	2.8	15	22
Inca	3	GOLD	2.6	21	24
Safari	3	BG	2.9	14	24

Gardeners and landscapers alike will be rewarded with more attractive flowering if they make the effort to remove dead flowers all season long. Series ratings and highest ranked cultivars for each flower color are listed above and to the left. Safari was the highest ranked marigold series in the 1998 trials.

Best Performing Marigold Cultivars

<u>Flower Color</u>	<u>Cultivar</u>	<u>Source</u>	<u>Rating</u>
Gold w/ Red	Bonanza Bolero	PA	2.9
Orange	Durango Orange	PA	3.3
	Safari Tangarine	BG	3.3
Red	Safari Red	BG	2.9
Yellow	Safari Yellow	BG	2.7

Gardeners and landscapers alike will be rewarded with more attractive flowering if they make the effort to remove dead flowers all season long. Series ratings and highest ranked cultivars for each flower color are listed above and to the left. Safari was the highest ranked marigold series in the 1998 trials.

Melampodium

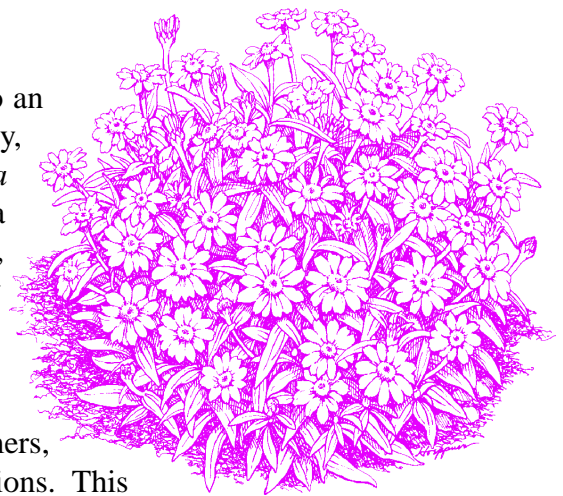
Both 'Million Gold' and 'Derby' did very well until late August, then plants declined rapidly. The problem appeared to be a root rot of some type, but we were unable to diagnose the cause of plant loss.

Mexican Sunflower

Tithonia is very attractive when in flower, but in our trials, they are very prone to mildew. By mid-July, much of the foliage was affected / infected, and flowering had all but ceased. Up to that point, Mexican sunflower was a good source for orange color in the sun garden.

Narrow-Leaf Zinnia

Zinnia angustifolia (synonym is *Z. linearis*) is evolving into an important bedding plant for the Southeast. To help it along its way, we have separated this species out from garden zinnias, *Zinnia violacea* (synonym is *Z. elegans*), and are evaluating them as a separate species. These plants form attractive domes of white, yellow and orange. They are tolerant of powdery mildew and rarely show symptoms. Although the flowers are smaller than garden zinnias, the color impact of plants is just as great if not greater due to the large number of flowers open at any given time. We have trialed narrow-leaf zinnias in extremely wet summers, dry summers, and "normal" summers and they performed well under all conditions. This year, the American Takii entry 'Crystal White' was excellent, and the seasonal average was 3.5.



New Guinea Impatiens

The flower and leaf color diversity of this species warrant a complete trial by itself. We only looked at 41 cultivars (37 from cuttings and four from seed). The cultivars from cuttings average 3.3 while the average for the seed selections was 2.9. Due to the diverse color range, it is difficult to list the best of each color, but we've

tried to classify them by color as best we can to the left. Series ratings are also given below. New Guineas continue to grow in their popularity and in use. They do require faithful watering in the landscape for best flowering and overall plant appearance.

Best Performing New Guinea Impatiens Cultivars				
<u>Flower Color</u>	<u>Cultivar</u>	<u>Source</u>	<u>Rating</u>	
Lavender	Celebration Lavender Glow	BFP	3.6	
Orange	Paradise Timor	ECKE	4.0	
Orange/Red	Paradise Antigua	ECKE	3.7	
Pink	Paradise Tonga	ECKE	3.9	
Red	Paradise Tarawa	ECKE	3.5	
Rose	Pure Beauty Aglia	ECKE	3.7	
White	Deka White	OGL	3.9	

New Guinea Impatiens Series Ratings					
<u>Series</u>	<u>Number trialed</u>	<u>Source</u>	<u>Rating</u>	<u>Height (inches)</u>	<u>Diam. (inches)</u>
Celebration	7	BFP	3.3	13	19
Java	4	PA	2.9	16	16
Paradise	13	ECKE	3.5	13	18
Pure Beauty	7	ECKE	3.3	13	20

Nicotiana

Nicotiana does not appear to be a reliable source of full season color for North Carolina. Most plants had died by mid-July and the highest ranked cultivar only received a 1.6 for the season.

Osteospermum

Osteospermum requires cool nights and bright light for optimum performance. We can supply the bright light, but cool nights are hard to manage during June through August.

Outback Paper Daisy

Bracteantha bracteata is an interesting yellow flower native to Australia. Unfortunately, plants in our trials never flowered consistently and all plants were dead by the end of August.

Pentas

Pentas has much potential as a flowering potted plant; and perhaps as a bedding plant also. Although the plants failed to flower until early July, they were very attractive during the second half of the summer.

Petunia

Petunias continue to perform well for us. There were 70 varieties trialed in 1998; 74% of them rated at or above 2.8, the cutoff for full-season color. Over 35% rated as excellent choices for full season color. The highest rated cultivars are listed on the next page by flower color. 'Surfinia Pastel Pink' was our highest rated petunia cultivar in 1998 and averaged 4.4 for the season. 'Rose Wave' and 'Misty Lilac Wave' were close behind and also rated a season average of 4.4. These top three performing petunias were also the top three Exceptional Performance Winners in our 1998 trials. The petunia series ratings are given to the right. The Wave series was highest rated, closely followed by Surfinia. Both of these series exhibited a low-growing rapidly spreading habit and were covered with flowers all season. In terms of other major size differences, Fantasy plants were definitely

Petunia Series Ratings					
<u>Series</u>	<u>Number trialed</u>	<u>Source</u>	<u>Rating</u>	<u>Height (inches)</u>	<u>Diam. (inches)</u>
Bravo	4	NOV	2.6	10	22
Celebrity	4	BG	2.7	10	19
Double Madness	3	BALL	2.8	15	22
Fantasy	9	GOLD	3.1	9	17
Hurrah	5	NOV	3.0	12	23
Madness	4	BALL	3.0	12	23
PrimeTime	8	GOLD	3.1	12	23
Storm	5	GOLD	2.9	10	19
Surfinia	5	BCG	4.1	7	24
Ultra	10	GOLD	2.8	10	23
Wave	3	PA	4.3	8	24

Best Performing Petunia Cultivars

<u>Flower Color</u>	<u>Cultivar</u>	<u>Source</u>	<u>Rating</u>
Blue/Purple	Purple Wave	PA	4.2
	Surfinia Purple	BCG	4.2
Lavender	Misty Lilac Wave	PA	4.4
Pink	Surfinia Pastel Pink	BCG	4.4
	Surfinia Brilliant Pink	BCG	4.2
Red	PrimeTime Red	GOLD	3.1
Rose	Rose Wave	PA	4.4
	Liracashower Rose	SAK	4.2
Salmon	Fantasy Salmon	GOLD	3.2
White	Surfinia White	BCG	4.0

more compact than the remaining series. Liracashowers are another “petunia” with smaller flowers; it shows much promise.



Phlox

Phlox requires more moderate temperatures than offered in Raleigh. All of the plants had died by late July.

Plectranthus

Three of the four selections of plectranthus that we tested were excellent sources of full-season vegetative color. *Plectranthus amboinicus* 'variegatus' is compact (15" height) and has light green foliage with white margins. 'Lime Lobo' was very compact (10" height and diameter) and was actually very slow to develop; thus the lower ratings. 'Athens' Gem' is more aggressive (24" tall) and has more yellow and light green variegation. The larger leafed *Plectranthus argentatus* (silver plectranthus) has gray-silver foliage and a more upright (26" height) growth habit. Both species are good contrast plants for flowering plants, especially pinks and blues.

Portulaca

Portulaca flowered very well throughout most of the season. As is usual with portulaca, flowering and overall plant appearance declined beginning in early August. Still, moss rose is a dependable low-growing early summer annual for our area.

Primula

Primula are another cool season annual not suited for summer trials in the Southeast. Plants never had the chance to flower prior to dying by mid-July.

Red Hot Poker

Kniphofia uvaria is a perennial in our area, but evidently will not flower from seed in the first season. All plants had died by mid-June.

Rudbeckia

'Indian Summer' was slow to flower, but once flowering began in late June, the plants were attractive until mid-September. 'Sonora' began flowering at the same time, but plants stopped growing and flowering in early August and were dead by mid-September.

Salvia

This year we planted 20 cultivars--17 *Salvia splendens*, and three *S. farinacea*. By far the toughest species for our region is *Salvia farinacea*, but it does not have the vivid red color found with *S. splendens*. The best salvia in 1998 was 'Red Hot Sally', a compact grower (11") that was covered with flowers all season long. Vista was the highest rated series (5 trialed; avg = 3.2; ht. = 10"; diameter = 16") in 1998. The Salsa series offers a wide array of inflorescence colors and as with other salvia, flowering can be maintained all summer long when spent flower heads are constantly removed (11 trialed; avg = 2.9; ht. = 10"; diameter = 15").

Scaevola

Scaevola is a tough, low-growing free-flowering plant that performs very well under our summer conditions. Blue flowers covered 'Outback Purple Fan' all season long, and the cultivar was an Exceptional Performance Winner in our 1998 trials.

Setcreasea

This purple-leaved trailing plant is *Tradescantia pallida* (synonym *Setcreasea pallida*) and is being used more and more in the landscape due to its durability in both full sun and shade (we have grown it both in full sun as well as in 55% shade and it did well in both). The dark foliage offers a nice contrast to light flowers, such as white impatiens and begonias.

Snapdragon

Cool season annuals such as snapdragons do well during the first portion of the trials, but cease flowering during the middle of the summer. This year was no exception.

Statice

Statice is a good cut flower for cool weather, but does not appear suited for our summers. Plants did not begin to flower until mid-August and never achieved any size.

Sunflower

Our lone sunflower entry offered six weeks of attractive flowering during June and July. Once the flower head began to fade, the plant quickly followed and all plants were dead by September.

Sweet Potato

A few years ago, 'Blackie' and 'Sulfur' were introduced and evaluated as potential bedding plants. Last year we also tried 'Pink Frost', a slower growing tricolor (green, white and pink on the leaves). All three are good choices for sites requiring rapid growth. This year we added '99', a deeply lobed margin variety with green leaves and darker veins. Its growth habit is as aggressive as 'Blackie'. The 'Variegated' selection unfortunately did not maintain its variegation throughout the season; the search for a green and white variegated cultivar continues.

Torenia

Torenia are shade-loving annuals that usually do not withstand the heat of mid-summer. This year however, plants of 'Blue' flowered almost the entire summer and were very attractive.

Trachelium

Throatwort is perhaps best known as a garden cut flower, but 'Passion In Violet' is a good compact variety for use as a bedding plant. Plants did not flower until early July and were covered with blue flower heads until the end of August.

Verbascum

Verbascum or mullein was first trialed in 1997. The flowers were borne on slender spikes and were interesting when open. Unfortunately, flowering was not consistent throughout the season and plants never offered a large amount of color.

Verbena

There were 23 varieties of verbena tested in 1998, and eight of them rated at or above the 3.2 demarcation as an excellent choice for full-season color. Viewing these plants in the landscape confirms that verbenas deserve much more attention in the color bed, even when grown as annuals.

Vinca

Vinca continues to be a top-performing bedding plant for our hot, humid conditions. Six of the eight cultivars trialed this year rated at or above the 2.8 demarcation for acceptable full-season color; three were rated at or above the 3.2 level for excellent full season color.



Zinnia

Six garden zinnias were trialed in 1998. Two of them, 'Profusion Cherry' and 'Profusion Orange' were remarkably resistant to mildew, and plants flowered all summer long. The compact growth habit in combination with continuous flowering makes these zinnias worth trying in the landscape.



Species	Cultivar	Source	Seasonal Average	Weekly ratings (week of the year) "-" indicates no flowering																	Height	Diameter	
				23	24	25	26	27	28	29	30	31	32	33	34	35	36	37	38	39			
Ageratum	Blue Hawaii	BG	3.5	3	3.5	3.5	3.5	3.5	3.5	3.5	3.5	3	2.5	2.5	4	4	4	4	4	4	3.5	7.5	18
Amaranthus	Pygmy Torch	BEN	0.9	3	2.5	2.5	2.5	1.5	1	1-	.5-	.5-	.5-	.5-	0	0	0	0	0	0			
Begonia	Dragonwing	PA	4.3	3-	3-	3	3.5	3.5	4	4.5	5	5	5	4.5	5	5	5	5	5	4.5	4.5	24	24
Begonia	Prelude Pink	BALL	4.1	3	3.5	3.5	4	4	4	4.5	4.5	4.5	4.5	4	4	3.5	4.5	4.5	4.5	4.5	4.5	17	22
Begonia	Super Olympia Rose	BEN	3.9	3	3	3.5	3.5	3.5	4	4.5	5	5	5	4	3.5	3.5	4	4	4	4	4	16	17
Begonia	Eureka Green Leaf Pink	NOV	3.9	3	3	3	3	3.5	4	4.5	4.5	4.5	4.5	4	4	3.5	4.5	4.5	4.5	4.5	4.5	15	17
Begonia	Harmony Mix	BALL	3.9	3	3.5	3.5	3	3.5	4	4.5	4.5	5	5	3.5	4	3.5	4	4	4	4	4	16	19
Begonia	Ambassador Pink	DHN	3.9	3	3.5	3.5	3.5	3.5	4	4.5	4.5	4.5	4.5	4	4	3	4	4	4	4	4	17	24
Begonia	Vodka	BEN	3.9	3	3	3.5	3.5	3.5	4	4.5	4.5	4.5	4.5	4.5	4.5	3	3	4	4	4.5	4.5	15	17
Begonia	Senator Rose [™] /White Center	DHN	3.9	3	3.5	3.5	3.5	3.5	4	4.5	4.5	4.5	5	3.5	3.5	3	4	4	4	4	4	14.5	21
Begonia	Super Olympia Pink	BEN	3.8	3	3	3	3	3.5	4	4.5	4.5	4.5	4.5	3	3.5	3	4.5	4.5	4.5	4.5	4.5	17	20
Begonia	Super Olympia Mix	BEN	3.8	3	3.5	3.5	3.5	3.5	4	4.5	4.5	4.5	4.5	3	3.5	3	4	4	4	4	4	15.5	22
Begonia	Eureka Bronze Leaf White	NOV	3.7	3	3.5	3.5	3.5	3.5	4	4.5	4.5	4.5	4.5	3.5	4	3	3.5	3.5	3.5	3.5	3.5	14	22.5
Begonia	Inferno Rose (Bronze Foliage)	DHN	3.7	3	3.5	3.5	3.5	3.5	4	4.5	4.5	4.5	4.5	3	2.5	2.5	4	4	4	4	4	17	24
Begonia	Espresso Mix	DHN	3.7	3	3	3.5	3	3.5	4	4.5	4.5	4.5	4.5	3.5	3.5	3.5	3.5	3.5	3.5	3.5	3.5	13	21
Begonia	Super Olympia Red	BEN	3.7	3	3.5	3.5	3	3	3.5	4	4	4	4	4	4	3.5	3.5	4	4	4	4	14	19
Begonia	Super Olympia Coral	BEN	3.6	3	3.5	3.5	3	3	3.5	4	4	4	4	4	4	3	3.5	4	4	4	4	16	22
Begonia	Eureka Bronze Leaf Rose	NOV	3.6	3	3	3.5	3.5	3.5	4	4.5	4.5	4.5	4.5	4	2.5	2.5	3	3.5	4	4	4	15	18
Begonia	Inferno White	DHN	3.6	3	3	3	2.5	3.5	4	4	4	4	4.5	3.5	4	3.5	4	4	3.5	3.5	16	19	
Begonia	Victory Green Leaf White	GOLD	3.6	3	3	3.5	3	3	3.5	4	4	4	4.5	3.5	3.5	3	4	4	4	4	4	12.5	17
Begonia	Victory Green Leaf Pink	GOLD	3.6	3	3	3	3	3	3.5	4	4	4	4.5	3.5	3.5	3	4	4	4	4	4	15	16
Begonia	Senator Pink	DHN	3.6	3	3	3	3	3	3.5	4	4.5	4.5	4.5	3	3.5	3	3.5	3.5	4	4	4	14	18
Begonia	Senator Scarlet	DHN	3.6	3	3	3	3	3	3.5	4	4	4	4	4	4	3	3.5	3.5	4	4	4	13	18
Begonia	Inferno Pink	DHN	3.5	3	3	3.5	3.5	4	4	4.5	4.5	4.5	4.5	3.5	3	2.5	3	3	3	3	3	20	24
Begonia	Victory Green Leaf Rose Bicolor	GOLD	3.5	3	3	3	3	3	3.5	4	4	4	4	3	3	3	4	4	4	4	4	11.5	12
Begonia	Cocktail Mix	BEN	3.4	3	3	3.5	3.5	3.5	4	4.5	4.5	4	4	3	3	3	3	3	3	3	3	18	15
Begonia	Inferno Red	DHN	3.4	3	3.5	3.5	3.5	3.5	3.5	4	4.5	4.5	4.5	4	3	3	3	2.5	2.5	2.5	15.5	24	

Week	23	24	25	26	27	28	29	30	31	32	33	34	35	36	37	38	39
Date	6/3	6/10	6/17	6/24	7/1	7/8	7/15	7/22	7/29	8/5	8/12	8/19	8/26	9/2	9/9	9/16	9/23

Species	Cultivar	Source	Seasonal Average	Weekly ratings (week of the year) "-" indicates no flowering																	Height	Diameter	
				23	24	25	26	27	28	29	30	31	32	33	34	35	36	37	38	39			
Begonia	Victory Bronze Leaf Pink	GOLD	3.4	3	3	3	3	3	3.5	4	4	4	4	3	3.5	3	3.5	3.5	3.5	3.5	3.5	15	17
Begonia	Victory Green Leaf Rose	GOLD	3.4	3	2.5	3	3	3	3.5	4	4	4	4	3.5	3	3	4	3.5	3.5	3.5	15	18	
Begonia	98BP02	AAS	3.4	3	3.5	3.5	3.5	3.5	4	4.5	4.5	4.5	4.5	3	2	2.5	3	3	3	2.5	19	24	
Begonia	Ambassador Scarlet	DHN	3.4	3	3.5	3.5	3.5	3.5	3.5	4	4	4	4	3	3	2.5	3.5	3	3	3	13.5	15	
Begonia	Prelude Scarlet	BALL	3.4	3	3	3	2.5	3	3.5	3.5	3.5	3.5	3.5	4	4	3.5	3.5	3.5	3.5	3.5	10.5	14	
Begonia	All Round Mix	DHN	3.4	3	3.5	4	4	4	4	4.5	5	4.5	4.5	2.5	2	2	2	2.5	2.5	2.5	27	24	
Begonia	Senator White	DHN	3.3	3	3.5	3.5	3.5	3.5	3.5	3.5	3.5	3.5	3.5	3	3	3	3	3	3	3	16.5	19	
Begonia	Ambassador Rose Blush	DHN	3.2	3	3	3	3	3	3.5	3.5	3.5	3.5	4	3	3	3	3	3	3.5	3.5	18	17.5	
Begonia	Ambassador Soft Pink	DHN	3.2	3	3	3	2.5	3	3	3.5	3.5	3.5	4	3	3	3	3.5	3.5	3.5	3.5	15	17	
Begonia	98BP03	AAS	3.2	3	3.5	3.5	3.5	3.5	4	4.5	4.5	4.5	5	3.5	2	2	2	2	2	2	20	24	
Begonia	Ambassador Rose	DHN	3.2	3	3.5	3.5	3	3.5	3.5	3.5	3.5	3.5	3.5	3	3	2.5	2.5	3	3	3.5	16.5	18	
Begonia	Inferno Rose (Green Foliage)	DHN	3.2	3	3.5	3.5	3.5	3.5	4	4.5	4.5	4.5	4	3	2	2	2.5	2	2	2	23	24	
Begonia	Victory Green Leaf Scarlet	GOLD	3.2	3	3	2.5	2.5	2.5	3	3	3.5	3.5	3.5	3.5	3.5	3	3	3.5	3.5	4	14	17.5	
Begonia	Victory Bronze Leaf Scarlet	GOLD	3.2	3	2.5	2.5	2.5	2.5	2.5	3	3	3	3	4	4	3.5	3.5	3.5	4	4	9	13	
Begonia	Ambassador Bicolor	DHN	3.1	3	3	3	3	3	3	3	3	3	3	3	3	3	3.5	3.5	3.5	3.5	14	14	
Begonia	Super Olympia White	BEN	3.1	3	3	2.5	2.5	3	3	3.5	3.5	3.5	4	3	3	3	3	3	3	3	16	18	
Begonia	Ambassador White	DHN	3.1	3	3	3	3	3	3	3	3	3	3	3	3	3	3.5	3.5	3	3	13	18	
Begonia	98BP01	AAS	3.0	3	3.5	3.5	3.5	3.5	4	4.5	4.5	4	4	3	2	2	1.5	1.5	1.5	1.5	17	24	
Begonia	Inferno Appleblossom	DHN	2.9	3	3	3.5	3	3	3	3.5	3.5	3.5	4	4	2	2	2.5	2	2	2	20	24	
Begonia	Senator Deep Rose	DHN	2.9	3	3	3.5	3	3	3	3	3	3	3	3	3	2.5	2.5	2.5	2.5	2.5	15	19	
Begonia	Senator Rose	DHN	2.9	3	3	3	3	3	3	3	3	3	3	3.5	3	2.5	2.5	2.5	2.5	2.5	16	19.5	
Begonia	Victory Bronze Leaf White	GOLD	2.8	3	3	2.5	2.5	2.5	2.5	3	3.5	3.5	3	3	3	2.5	2.5	2.5	2.5	2.5	12	16	
Begonia	Ambassador Salmon	DHN	2.7	3	3	3	3	3	3	3	3	3	3	3.5	3	2	2	2	2	2	17.5	15	
Begonia	Ambassador Coral	DHN	2.6	3	2.5	2.5	2	2.5	2	2	2	2.5	2.5	3.5	3	3	3	3	3	3	12	12	
Bloodflower	Orange	BWN	3.9	3-	3-	3.5	4	4	4.5	4.5	4.5	4.5	4.5	5	3.5	3.5	4	3.5	3	3	44.5	24	
Bloodflower	Silky Gold	BWN	3.5	3-	3-	3-	3-	3.5	4	4	4	4	4	5	3.5	3.5	3.5	3	2.5	2.5	41	21	
Browallia	Ocean Mix	DHN	1.3					3-	2.5-	2-	1-	.5-	.5-	1-	1.5-	1.5-	1-	1-	1-	1	1.5	2.5	

Week	23	24	25	26	27	28	29	30	31	32	33	34	35	36	37	38	39
Date	6/3	6/10	6/17	6/24	7/1	7/8	7/15	7/22	7/29	8/5	8/12	8/19	8/26	9/2	9/9	9/16	9/23

Species	Cultivar	Source	Seasonal Average	Weekly ratings (week of the year) "-" indicates no flowering																	Height	Diameter
				23	24	25	26	27	28	29	30	31	32	33	34	35	36	37	38	39		
Calendula	Princess Gemischt	BEN	1.7	3	3	3	3	3	3	3	2	1.5	1.5-	2	1	.5	0	0	0	0	13	22
Calendula	Calypso Yellow w/Black Center	SAK	1.2	3	3	3.5	3	2.5	2	2	1	.5	0	0	0	0	0	0	0	0		
Calendula	Calypso Orange w/Black Center	SAK	1.2	3	3	3.5	3	2.5	2	2	1-	.5-	0	0	0	0	0	0	0	0		
Cat Whiskers	White	BWN	3.2	3.5-	3.5-	3.5-	3.5-	4	4	4	4	4	4	4.5-	2	2	2	2	2	2	29	24
Celosia	Prestige Scarlet	SAK	3.9	3-	3-	3.5-	3.5	4	4.5	5	5	5	5	4.5	4.5	3	2.5	2	2.5	2	12	18.5
Celosia	New Look	BEN	3.8	3	3	3.5	3.5	3.5	3.5	4	4	4	4	5	5	4.5	4	3.5	3	3	15	19
Celosia	Dance Gold	GRS	2.5	3	3	3	3	3	3	3	3	2.5	2.5	3	2	2	2	2	1.5	1.5	7.5	12
Celosia	Gloria Mix	BEN	2.3	3	3	3.5	3	3	3	3	2.5	2.5	2.5	2	2	2	1.5	1	.5	.5	10	11
Celosia	Amigo Mix	BEN	2.0	3	3	3	2.5	2.5	2	2	2	2	1.5	2	2	2	1.5	1.5	1	1	6	5.5
Centaurea	Premium Lemon Yellow	GRS	0.9	2-	2-	2.5-	2	2	2	1.5	2	0	0	0	0	0	0	0	0	0		
Coleus	Alabama Sunset	BWN	4.0	3-	3-	3-	3-	4-	4.5-	4.5-	4.5-	5-	5-	4.5-	4.5-	4-	4	4	3.5	3.5	31.5	24
Coleus	Lime Queen	BWN	3.7	3-	3-	3.5-	3.5-	4-	4.5-	4.5-	4.5	4.5	4	4	4	4	3.5	3	3	2.5	40	24
Coleus	Gay's Delight	BWN	3.7	3-	3-	3-	3-	3.5-	3.5-	3.5-	4-	4-	4-	4-	4-	4-	4-	4-	4-	4-	34	24
Coleus	Camellia	BWN	3.4	3-	3-	3.5-	3-	3.5-	3.5-	3.5-	4-	4.5-	4.5-	5-	4-	3-	3-	2.5-	2.5-	2.5-	30.5	24
Coleus	Black Opal	BWN	3.4	3-	3.5-	3.5-	3.5-	4-	4	4	4	4	4	4.5	4	3	2.5	2.5	2	2	36	24
Coleus	Touchelay	BWN	3.3	3-	3-	3-	3.5-	4-	4.5-	4.5-	4.5-	4.5-	4-	3-	2-	2-	2.5-	2.5-	2.5-	2.5	27	24
Coleus	Yellow In Sun	BWN	3.3	3-	3-	3-	3-	4-	4.5-	4.5-	4.5-	5-	5-	4-	2-	2-	2-	2-	2-	2-	31.5	20
Coleus	Glen Laky	BWN	3.2	3-	3-	3.5-	3.5-	4-	4.5-	4.5-	4.5	4	4	3.5	3	2	2	2	2	2	37	24
Coleus	Red Coat	BWN	3.1	3-	3.5-	4-	4	4-	4	4	4.5	4.5	4	2	2	2	2	2	2	2	24	24
Coleus	Gold Giant	BWN	3.1	3-	3-	3-	3.5-	4-	4.5-	4.5-	4.5-	4.5-	4-	3-	2-	2-	2-	2-	2	2	27	24
Coleus	Golden Girl	BWN	3.1	3-	3-	3.5-	3.5-	4-	4-	4-	4	4	4	4	2	2	2	2	2	2	40	24
Coleus	Butter Cream	BWN	3.1	3-	3-	3-	3.5-	4-	4-	4.5-	4.5	4	3.5	3-	2	2	2	2	2	2	35	24
Coleus	Blusher	BWN	3.1	3-	3-	3-	3-	3-	3-	3.5-	4-	4-	4.5-	5-	3-	2-	2-	2-	2-	2-	31.5	24
Coleus	Black Magic	BWN	3.1	3-	3-	3.5-	3.5-	4-	4-	4-	4.5-	4.5-	4-	4-	2-	2-	1.5-	1.5-	1.5-	1.5-	33.5	24
Coleus	New Brilliance	BWN	2.8	3-	3.5-	3.5-	3	3	3.5	3.5	3.5	4	3.5	2	2	2	2	2	2	2	28.5	24
Coleus	Black Trailer	BWN	2.6					3-	3-	3-	3.5-	3.5-	3.5-	2.5-	2-	2-	2-	2	2	2	14.5	10
Coleus	Inky Fingers	BWN	2.6					3-	3-	3-	3-	3-	3-	3-	3-	2-	2-	2-	2	2	17.5	16

Week	23	24	25	26	27	28	29	30	31	32	33	34	35	36	37	38	39
Date	6/3	6/10	6/17	6/24	7/1	7/8	7/15	7/22	7/29	8/5	8/12	8/19	8/26	9/2	9/9	9/16	9/23

Species	Cultivar	Source	Seasonal Average	Weekly ratings (week of the year) "-" indicates no flowering																	Height	Diameter
				23	24	25	26	27	28	29	30	31	32	33	34	35	36	37	38	39		
Coleus	Leopard	BWN	2.5	3-	3-	3	3	3	3	3	3	3	3	3	2	2	1.5	1.5	1.5	1.5	27	17
Coleus	Olive	BWN	2.4					3-	3-	3	3	3	3	3	2.5	2	1.5	1.5	1.5	1.5	20	15
Coleus	Rose Trailer	BWN	2.3					3-	3-	3-	3.5-	3.5-	3.5-	1.5	1.5	1.5	1.5	1.5	1.5	1.5	22.5	8
Coleus	Max Levering	BWN	2.3					3-	3-	3-	3.5-	3.5-	3.5-	1.5-	1.5-	1.5-	1.5-	1.5-	1.5-	1.5-	18.5	14
Cosmos	97F03	AAS	1.8	3	3	3	3	3	3	2.5	2	1.5	1.5	1.5	1-	.5	.5	.5	.5	0	13	8
Dahlia	Garden Pride	BEN	2.0	3	3	3.5	3	3.5	3.5	3	2	1.5	1.5	2-	1.5-	.5	.5	.5-	.5-	.5-	9.5	13.5
Dianthus	Diamond Purple	SAK	3.4	3	3.5	3.5	3	3.5	3.5	3.5	3.5	3.5	3.5	3.5	3.5	3	3	3.5	3.5	3.5	9	13.5
Dianthus	Diamond Blush Pink	SAK	3.1	3	3	3	3	3	3	3.5	3	3	3.5	2.5	2.5	3	3.5	3.5	3.5	3.5	7	9
Dianthus	Floral Lace Rose	BALL	3.1	3	3-	3-	3	3	3	3	3	3	3	4	3	3	3	3	3	3	8	11
Dianthus	Diamond Pink	SAK	3.0	3	3	3	3	3	3	3	3	3	3	3	3	3	3	3	3	3	8	11
Dianthus	Floral Lace True Rose	BALL	2.9	3	3	3	3	3	3.5	3.5	3.5	3.5	3.5	3.5	3	2.5	2.5	2	2	2	9	11.5
Dianthus	Diamond Coral	SAK	2.9	3	3.5	3.5	3	3.5	3.5	3.5	3	3	3	2.5	2.5	2.5	2.5	2.5	2.5	2.5	7	9
Dianthus	Diamond Carmine	SAK	2.8	3	3	3	3	3	3	3	3	3	3	2	2.5	2.5	3	3	2.5	2.5	7	9.5
Dianthus	Floral Lace Violet Picotee	BALL	2.7	3	3	3	3	3.5	3.5	3.5	3.5	3.5	3.5	2.5	2	2	2	1.5	1.5	1.5	7	9.5
Dianthus	Floral Lace Crimson	BALL	2.7	2	2.5	2.5	2.5	3	3	3	3	3	3	3	3	2.5	2.5	2.5	2.5	2	7	9
Dianthus	Floral Lace Picotee	BALL	2.6	2	3	3	3	3	3	3	3	3	2.5	2.5	2	2.5	2.5	2.5	2	2	7	9
Dianthus	Floral Lace Light Pink	BALL	2.6	3	3	3	3	3	3	3	2	2	2	2.5	2	2	2.5	2.5	2.5	2.5	6	9
Dianthus	Flash Mix	AT	2.3	3	3	3	2.5	2.5	2.5	3	3	3	3.5	3	3	2	1.5	0	0	0	8.5	9.5
Dianthus	Pink Flash	AT	2.1	3	3	3	3	2.5	2.5	2.5	2	2	2	2	1.5	1.5	1.5	1.5	1.5	1.5	7	7
Dianthus	Diamond Mix	SAK	2.1	3	3	3	3	3	3	3	3	3	3	2	2	1	1	0	0	0	9.5	11
Dianthus	Diamond Scarlet	SAK	2.1	3-	3	3	3	3	3	2.5	1.5	1.5	1.5	2	2	1.5	1.5	1	1	1	6.5	8
Erigeron	Profusion	BEN	2.9	3-	3	3	2.5	2.5	2.5	2.5	2.5	2.5	3	3	3.5	3.5	3.5	3-	3-	3	7	18
Felicia	Spring Merchen	AT	0.7	3	3	2.5		1.5-	.5-	0	0	0	0	0	0	0	0	0	0	0		
Fuchsia	Cascading	BCG	3.5	3	3	3.5-	3.5-	3.5-	4-	4-	4-	4-	4-	3-	3-	3-	3.5-	3.5	3.5	3.5	24	22
Fuchsia	Dainty	BCG	3.3	3	3	3	3	3	3.5-	3.5-	3.5-	3.5-	3.5	3-	3-	3-	3.5	3.5	3.5	3.5	6.5	12
Gazania	Talent Yellow	BEN	0.5	3-	3-	2-	0	0	0	0	0	0	0	0	0	0	0	0	0	0		
Geranium (From Cuttings)	Designer Red	BFP	3.6	3	3	3.5	3.5	3.5	4	4	4.5	4.5	4.5	3.5	3	3	3.5	3.5	3	3	12	20

Week	23	24	25	26	27	28	29	30	31	32	33	34	35	36	37	38	39
Date	6/3	6/10	6/17	6/24	7/1	7/8	7/15	7/22	7/29	8/5	8/12	8/19	8/26	9/2	9/9	9/16	9/23

Species	Cultivar	Source	Seasonal Average	Weekly ratings (week of the year) "-" indicates no flowering																	Height	Diameter
				23	24	25	26	27	28	29	30	31	32	33	34	35	36	37	38	39		
Geranium (From Cuttings)	Schoene Helena	FIS	3.2	3	3	3.5	3.5	3.5	4	4.5	4.5	4.5	4.5	3	3	2.5	2.5	1.5-	1.5-	1.5-	10	19
Geranium (From Cuttings)	Jessica	OGL	3.1	3	3	3	3	3	3.5	3.5	4	4	4.5	2	3	3	3.5	3.5	2-	2	7.5	21
Geranium (From Cuttings)	Designer Lilac Chiffon	BFP	3.1	3	3.5	3.5	3.5	3.5	4	4	4.5	4.5	4.5	3	2	2.5	2	2	1.5	1.5	9	22
Geranium (From Cuttings)	Lotus	FIS	3.1	3	3	3	3	3	3	3	3.5	3.5	3.5	3	3	3	3.5	3.5	2.5-	2.5	8	21
Geranium (From Cuttings)	Tango	FIS	3.1	3	3	3	3	3	3.5	3.5	3.5	4	4	3.5	3	3	3	2.5	2	2	9.5	13
Geranium (From Cuttings)	Designer Purple Rose	BFP	3.1	3	3	3	3.5	3.5	3.5	4	4.5	4.5	4.5	3.5	2.5	2.5	2.5	2-	1.5-	1-	7.5	17
Geranium (From Cuttings)	Galleria SnowFire	BFP	3.1	3	3	3	3.5	3.5	4	4	4.5	4.5	5	2.5	3	3	2	2-	1-	1-	7.5	24
Geranium (From Cuttings)	Melody Red	OGL	3.1	3	3	3.5	3	3.5	4	4	4.5	4.5	4	2.5	2.5	2	2	2.5	2	2	10	16.5
Geranium (From Cuttings)	Disco '98	FIS	3.1	3	3	3	3	3	3.5	4	4.5	4.5	4.5	3	2.5	2.5	2.5	2.5-	1.5-	1.5-	9	14
Geranium (From Cuttings)	Fantasia Pink Shell	BFP	3.1	3	3	3	3	3	3.5	3.5	4	4	4.5	3	2.5	3	3	3	1.5-	1.5	8.5	19
Geranium (From Cuttings)	Starburst Red	BFP	3.1	3	3	3	3	3.5	4	4	4.5	4.5	5	4	2	3	2.5	2	.5	.5	12	20
Geranium (From Cuttings)	Evening Glow	OGL	3.1	3	3	3	3.5	3.5	3.5	3.5	3.5	4	4	4	2	3	3.5	2.5-	1.5-	1-	5.5	18
Geranium (From Cuttings)	Grand Prix	FIS	3.0	3	3	3	3.5	3.5	4	4.5	4.5	4.5	4.5	2.5	2.5	2.5	2	2	1	1	12	23
Geranium (From Cuttings)	Samba	FIS	3.0	3	3	3	3	3	3	3.5	3.5	3.5	3.5	4	3	3	3	2.5	2	1.5	8	13
Geranium (From Cuttings)	Sincerely Yours	OGL	2.9	3	3	3	3	3	3.5	3.5	4	4.5	4.5	3	2.5	2.5	2.5	2	1-	1	10	17.5
Geranium (From Cuttings)	Melody	OGL	2.9	3	3	3	3	3	3.5	3.5	3.5	3.5	3.5	3.5	2.5	3	3	2.5-	1.5-	1-	7	15.5
Geranium (From Cuttings)	North Star	OGL	2.9	3	3	3	3	3	3.5	3.5	3.5	4	4	3	2.5	2	2.5	2.5-	2-	1.5-	8	20
Geranium (From Cuttings)	Diabolo '98	FIS	2.9	3	3	3	3	3	3.5	3.5	3.5	4	4	3.5	3	2.5	2	1.5	1.5-	1-	7.5	12
Geranium (From Cuttings)	Designer Whitefire	BFP	2.9	3	3	3	3	3.5	4	4	4	4	4	2	2	2.5	2.5	2-	1-	1-	7.5	16
Geranium (From Cuttings)	Bravo	FIS	2.8	3	3	3	3	3	3.5	3.5	3.5	4	4	3.5	3	2	2	1.5-	1-	.5-	8	14
Geranium (From Cuttings)	Bravo Light Pink	FIS	2.8	3	3	3	3	3	3.5	3.5	4	4	4	3	2	2	2	2-	1-	1-	8	17.5
Geranium (From Cuttings)	Fantasia Flame	BFP	2.8	3	3	3	3	3	4	4	4.5	4.5	4	2	2	2	1.5	1.5-	1	1	9	17.5
Geranium (From Cuttings)	Rokoko	FIS	2.7	3	3	3	3	3	3	3.5	4	4	4	3	2.5	2.5	2	1.5-	1-	.5-	9.5	16
Geranium (From Cuttings)	Designer Bright Lilac Impr.	BFP	2.7	3	3	3	3	3	3.5	4	4	3.5	3.5	3	2	2	1.5	1.5-	1-	1-	9	21
Geranium (From Cuttings)	Peaches	OGL	2.7	3	3	3	3	3	3	3	3	3	3	3.5	2	3	2.5	2-	1.5-	1	5.5	17
Geranium (From Cuttings)	Charmant '98	FIS	2.6	3	3	3	3	3	3	3.5	4	4	3.5	2.5	2	2	2	1.5-	1-	1-	6	13
Geranium (From Cuttings)	Montevideo	FIS	2.6	3	3	3	3	3.5	3	3	3.5	4	4	2.5	2	2	2	1.5-	.5-	.5-	8.5	18

Week	23	24	25	26	27	28	29	30	31	32	33	34	35	36	37	38	39
Date	6/3	6/10	6/17	6/24	7/1	7/8	7/15	7/22	7/29	8/5	8/12	8/19	8/26	9/2	9/9	9/16	9/23

Species	Cultivar	Source	Seasonal Average	Weekly ratings (week of the year) "-" indicates no flowering																Height	Diameter	
				23	24	25	26	27	28	29	30	31	32	33	34	35	36	37	38			39
Geranium (From Cuttings)	Veronica	OGL	2.6	3	3	3	3	3	3.5	3.5	3.5	3.5	3	3	2	2	2	1.5-	1-	.5-	8	14.5
Geranium (From Cuttings)	Fantasia Coral	BFP	2.6	3	3	3.5	3	3	3.5	3.5	3	3	3	3	2	2	1.5	1.5	1-	1-	12	15.5
Geranium (From Cuttings)	Rumba '98	FIS	2.5	3	3	3	3	3	3	3	3.5	3.5	3.5	2.5	2	2	1.5	1.5	1	1	7	14.5
Geranium (From Cuttings)	Tango Dark Red	FIS	2.5	3	3	3	3	3	3	3	3	3	3	3	2.5	2.5	2	1.5	1-	.5-	7.5	12
Geranium (From Cuttings)	Blues	FIS	2.5	3	3	3	2.5	3	3	3	3	3	3	3.5	2.5	2	1.5	1.5	1-	1	6	16
Geranium (From Cuttings)	Designer Hot Coral	BFP	2.5	3	3	3	3.5	3	3	3	3.5	3	3	3	2	1.5	1.5	1.5	1-	1-	8.5	14
Geranium (From Cuttings)	Dolce Vita	FIS	2.5	3	3	3	3	3	3	3	3	3	3	2	2	2	2	1.5-	1.5-	1-	8.5	16
Geranium (From Cuttings)	Helena '98	FIS	2.5	3	3	3	3	3	3	3.5	4	4	3.5	2.5	2	2	1	.5-	.5-	.5-	9.5	15
Geranium (From Cuttings)	Valentine	OGL	2.5	3	3	2.5	2.5	2.5	3	3	3.5	3	3	3	2.5	2.5	2	1.5-	1-	.5-	5	14.5
Geranium (From Cuttings)	Atlantis '96	FIS	2.4	3	3	3	3	3	3.5	4	4	4	3	2	1.5	1.5	1	1	.5-	.5-	8.5	15
Geranium (From Cuttings)	Rio	FIS	2.4	3	3	2.5	2.5	2.5	2.5	3	3	2.5	3	3	3.5	2.5	2	1.5-	1-	.5-	7	15
Geranium (From Cuttings)	Galleria Sunrise	BFP	2.4	3	3	3.5	3.5	3.5	4	4	3	3	3	2	1.5	1.5	1	1	.5	.5	10.5	24
Geranium (From Cuttings)	Madison	FIS	2.4	3	3	3	3	3	3.5	3.5	3.5	3.5	2.5	2	2	2	1.5	1-	.5-	.5-	9	15
Geranium (From Cuttings)	Raspberry Ice	OGL	2.4	2.5	2.5	2.5	2.5	2.5	2.5	2.5	3	3	3	3.5	2	2	2.5	2-	1.5-	1-	7	14.5
Geranium (From Cuttings)	Caliscso	FIS	2.4	3	3	3	2.5	3	3	3	3	3	3	2.5	2	2	2	1.5-	1-	.5-	7	12.5
Geranium (From Cuttings)	Fantasia Flamingo Rose	BFP	2.4	3	3	3	3	3	3.5	3.5	4	3.5	3	2	1.5	1.5	1	1	.5-	.5-	11	13
Geranium (From Cuttings)	Fireball	OGL	2.4	3	3	3	3	3	3	3	3.5	4	3.5	2	2	1.5	1	1-	.5-	.5-	7	15
Geranium (From Cuttings)	Kardino	FIS	2.4	3	3	3	3	2.5	3	3	3	3	3	3	2	2	1.5	1-	.5-	.5-	5.5	13.5
Geranium (From Cuttings)	Boogy	FIS	2.3	3	3	3	3	3	3.5	3.5	3.5	3.5	3	1.5	1.5	1.5	1	1-	.5-	.5-	9.5	16
Geranium (From Cuttings)	Designer Bright Scarlet	BFP	2.3	3	3	3	3	3	3.5	3.5	3.5	3.5	3	1.5	1.5	1.5	1	1	.5-	.5-	7.5	13
Geranium (From Cuttings)	Lollipop	OGL	2.3	3	3	2.5	2.5	2.5	2	2	2.5	2.5	2.5	3	2	2.5	2.5	2	1.5-	1	8.5	13
Geranium (From Cuttings)	Tiffany '96	FIS	2.3	3	3	3	3	3	3	3	3	3	2.5	2.5	2	2	1	1-	.5-	.5-	8	12.5
Geranium (From Cuttings)	Tango Violet	FIS	2.3	3	3	3	3	2.5	3	3	3	3	3	2.5	2	1.5	1	1-	.5-	.5-	6	10.5
Geranium (From Cuttings)	Designer Salmon Rose	BFP	2.3	3	3	3	3	3	3	3.5	3.5	3	3	2	1.5	1.5	1	.5	.5	.5-	8.5	13
Geranium (From Cuttings)	Showcase Light Lavender	BFP	2.3	3	3	3	3	3	3	3	3.5	3.5	3.5	2	1.5	1	1	.5-	.5-	.5-	7	12
Geranium (From Cuttings)	Calypso	FIS	2.2	3	3	3	3	3	3	3.5	3.5	3	2	2	1.5	1.5	.5	.5-	.5-	.5-	5	14
Geranium (From Cuttings)	Tango Light Salmon	FIS	2.1	3	3	3	2.5	3	3	3	3.5	3	2.5	2	1.5	1	.5	.5-	.5	.5-	7.5	14.5

Week	23	24	25	26	27	28	29	30	31	32	33	34	35	36	37	38	39
Date	6/3	6/10	6/17	6/24	7/1	7/8	7/15	7/22	7/29	8/5	8/12	8/19	8/26	9/2	9/9	9/16	9/23

Species	Cultivar	Source	Seasonal Average	Weekly ratings (week of the year) "-" indicates no flowering																Height	Diameter	
				23	24	25	26	27	28	29	30	31	32	33	34	35	36	37	38			39
Geranium (From Cuttings)	Sweet Temptation	OGL	2.1	3	3	2.5	2.5	2.5	3	3	3	2.5	2.5	2	2	1	1	1-	.5-	.5-	6.5	11.5
Geranium (From Cuttings)	Patriot Cherry Rose	OGL	1.9	3	3	3	3	3	2.5	2.5	2.5	2	2	1	1	1	.5	.5-	.5-	.5-	7	11.5
Geranium (From Cuttings)	White Truffle	OGL	1.8	2.5	2.5	2.5	2	2	2	2	2	2	2.5	2	1.5	1.5	1.5	1-	.5-	.5-	6	10
Geranium (From Cuttings)	Gloria '98	FIS	1.7	3	3	3	3	3	2.5	2.5	1.5	1.5	1.5	1	1	1	.5	.5-	.5-	.5-	9	13
Geranium (From Cuttings)	Joy	FIS	1.4	1.5	1.5	1.5	1.5	1.5	1.5	1.5	1.5	1.5	1.5	2	1.5	1.5	1.5	1-	.5-	.5-	5	11
Geranium (From Cuttings)	Alba	FIS	0.2	1.5-	1-	.5-	0	0	0	0	0	0	0	0	0	0	0	0	0	0		
Geranium (From Seed)	Maverick White	GOLD	3.3	3-	3-	3	3	3	3.5	3.5	4.5	4.5	5	3	3	3	3.5	3.5-	2.5-	2	10	19
Geranium (From Seed)	97BP02	AAS	3.1	2.5-	2.5	3	3	3	3.5	4	4.5	4.5	5	2.5	2	3	3.5	3-	2-	2-	13	20
Geranium (From Seed)	Maverick Violet	GOLD	2.9	2.5-	2.5-	2.5	2.5	3	3.5	4	4.5	4.5	4.5	3.5	3	2.5	2	2-	1-	1-	9	21
Geranium (From Seed)	Maverick Pink	GOLD	2.7	2-	2	2.5	2.5	3	3	3	3.5	3.5	4	3	3	2.5	3	3-	1.5-	1.5	8.5	16
Geranium (From Seed)	Pinto White	NOV	2.6	2	2-	2	2	2	3	3.5	4	4	4.5	3	3	3	2.5	2-	1-	1-	10	18
Geranium (From Seed)	98BP04	AAS	2.6	3	3	3	2.5	2.5	3	3.5	3.5	4	4	3	2	2	2	1.5-	1-	.5-	9	12
Geranium (From Seed)	Maverick Star	GOLD	2.6	2	2	2	2	2.5	3	3	3.5	3.5	3.5	3.5	3	3	2.5	2-	1.5-	1-	8.5	21
Geranium (From Seed)	Scarlet Eye Orbit	AAS	2.5	2	2	2	2	2	2.5	2.5	3	3.5	3.5	3.5	2.5	2.5	3	2.5-	1.5-	1.5	7	14.5
Geranium (From Seed)	Multibloom Light Salmon	GOLD	2.2	2.5	2	2	2	2.5	2.5	2.5	3	3	2.5	2.5	2	2	2	2-	1.5-	1-	9.5	17.5
Geranium (From Seed)	Maverick Coral	GOLD	2.2	3	2.5-	2.5	2.5	2.5	2.5	2.5	2.5	2.5	2.5	2.5	2	2	2	1.5-	1-	1-	9.5	15
Geranium (From Seed)	Maverick Red	GOLD	2.1	1.5-	1.5-	1.5-	1.5	1.5	2	2	3	3	3	3	3	2.5	2.5	2-	1.5-	1.5-	10	19.5
Geranium (From Seed)	Ringo 2000 Rose Bicolor	AAS	2.1	1.5	1.5	2.5	2.5	2.5	3	3	3	3	3	2	2	2	1.5	1-	1-	.5-	7	17
Geranium (From Seed)	Pinto Red	NOV	2.0	2-	2-	2	2	2	2.5	2.5	3	3	3	2.5	1.5	1.5	1.5	1.5-	1-	.5-	9	14
Geranium (From Seed)	Multibloom Capri	GOLD	1.9	2	2.5	2.5	2.5	2.35	3	3.5	3	3	2.5	1	1	1	1	1-	.5-	.5-	8	12.5
Geranium (From Seed)	Maverick Light Salmon	GOLD	1.9	1.5-	1.5-	1.5	1.5	1.5	2	2	2.5	2.5	2.5	3	2	2	2	1.5-	1-	1-	9	15
Geranium (From Seed)	Maverick Scarlet	GOLD	1.7	1-	1.5-	1.5-	1.5	1.5	2	2	3	3	3	2.5	2	1.5	1.5	1-	.5-	.5-	8.5	12.5
Geranium (From Seed)	Maverick Salmon	GOLD	1.3	1.5-	1.5	1.5	1.5	1.5	1.5	1.5	1.5	1.5	1.5	2	1.5	1	.5-	.5-	.5-	.5-	9	14
Gypsophila	Garden Bride	DHN	1.9	3	3	3	3.5	3.5	3	2.5	2	1.5	1.5	2.5	1	.5	.5	.5	0	0	7	20.5
Gypsophila	Gypsy	DHN	1.9	3	3	3.5	3	3	3.5	3.5	2.5	2	2	2	.5	0	0	0	0	0	8.5	18
Hypoestes	Confetti Mix	DHN	3.2	3-	3-	3.5-	3-	3.5-	3.5-	3.5-	3.5-	3.5-	3.5	3	3	3	3	3	3	3	28	19
Impatiens	Mosaic Rose	GOLD	4.1	3	3	3.5	3.5	3.5	4	4	4	4.5	4.5	5	5	4.5	4.5	4.5	4.5	4	20.5	24

Week	23	24	25	26	27	28	29	30	31	32	33	34	35	36	37	38	39
Date	6/3	6/10	6/17	6/24	7/1	7/8	7/15	7/22	7/29	8/5	8/12	8/19	8/26	9/2	9/9	9/16	9/23

Species	Cultivar	Source	Seasonal Average	Weekly ratings (week of the year) "-" indicates no flowering																Height	Diameter	
				23	24	25	26	27	28	29	30	31	32	33	34	35	36	37	38			39
Impatiens	Accent White	GOLD	4.0	3	3	3.5	4	4	4	4.5	4.5	4.5	4.5	4	4	4	4	4.5	4.5	4	27.5	24
Impatiens	Accent Coral	GOLD	3.9	3	3	3.5	3.5	3.5	3.5	4	4.5	4.5	4	4	4	4	4	4.5	4.5	4.5	22	24
Impatiens	Impulse Red	NOV	3.8	3	3	3.5	3.5	3.5	4	4.5	4.5	4.5	4.5	4.5	4	3.5	3.5	3.5	3.5	3.5	27	24
Impatiens	Super Elfin Raspberry	PA	3.8	3	3	3.5	3.5	3.5	3.5	3.5	3.5	4	4	4	4	4	4.5	4.5	4.5	4	18	24
Impatiens	Carnival Orange	DHN	3.8	3	3	3.5	3.5	3.5	3.5	4	4.5	4.5	4.5	4	3.5	3.5	3.5	4	4	4	25	24
Impatiens	Tempo White	BG	3.8	3	3	3.5	3.5	3.5	3.5	4	4	4	4	4	4	4	4	4	4	4	24	24
Impatiens	Accent Bright Eye	GOLD	3.7	3	3	3.5	3.5	3.5	4	4	4	4	4	4.5	4	4	4	3.5	3.5	3.5	19.5	24
Impatiens	Tempo Burgundy	BG	3.7	3	3	3	3.5	3.5	4	4.5	4.5	4.5	4.5	3.5	3	3.5	3.5	4	4	3.5	25.5	24
Impatiens	Accent Lilac	GOLD	3.7	3	3	3	3	3.5	4	4	4	4	4	4	4	4	4	4	4	3.5	17.5	24
Impatiens	Deco Orange	PA	3.7	3	3	3.5	3.5	3.5	4	4	4	4.5	4.5	3	3	3.5	4	4	4	4	23	24
Impatiens	Cajun Carmine	NOV	3.7	3	3	3.5	3.5	3.5	4	4	4.5	4.5	4.5	4	3	3.5	3.5	3.5	3.5	3.5	24	24
Impatiens	Dazzler Lilac Splash	BALL	3.6	3	3	3.5	3.5	3.5	4	4	4	4	4	3.5	3.5	3.5	3.5	4	4	3.5	19	24
Impatiens	Impulse Deep Pink	NOV	3.6	3	3	3.5	3	3.5	4	4.5	4.5	5	5	3.5	3	3.5	3	3.5	3.5	3	25	24
Impatiens	Mosaic Lilac	GOLD	3.6	3	3	3	3	3	3.5	3.5	4	4.5	4.5	4	3	3.5	4	4	4	4	22	24
Impatiens	Carnival White	DHN	3.6	3	3	3	3	3	3.5	3.5	4	4	4	3.5	3.5	4	4	4	4	4	24.5	24
Impatiens	Dazzler Star Mix	BALL	3.6	3	3	3.5	3.5	3.5	4	4	4	4	4	4	3	3.5	3.5	3.5	3.5	3.5	18	24
Impatiens	Fiesta White	BFP	3.6	3	3	3.5	3.5	3.5	3.5	3.5	3.5	3.5	4	4	4	4	4	3.5	3.5	3.5	22	24
Impatiens	Carnival Pink	DHN	3.6	3	3	3.5	3.5	3.5	4	4.5	4.5	4.5	4.5	4	2	2.5	3	3.5	3.5	3.5	25.5	24
Impatiens	Showstopper Sweetness	BALL	3.6	3	3	3.5	3.5	3.5	4	4	4	4	3.5	3.5	4	3.5	3.5	3.5	3.5	3	19	24
Impatiens	Accent Lavender Blue	GOLD	3.5	3	3	3.5	3.5	4	4	4.5	4.5	4.5	4.5	3.5	3	3	3	3	3	2.5	25.5	24
Impatiens	Accent Pink	GOLD	3.5	3	3	3	3	3.5	4	4.5	4.5	4.5	4	3.5	2.5	3	3.5	3.5	3.5	3.5	25	24
Impatiens	Accent Rose	GOLD	3.5	3	3	3.5	3.5	3.5	4	4.5	4.5	4.5	4	4	3	3	3	3	3	3	24	24
Impatiens	Dazzler Violet	BALL	3.5	3	3	3.5	3.5	3.5	4	4	4.5	4.5	4.5	4	3.5	3.5	2.5	3	3	2.5	22	24
Impatiens	Impulse Coral	NOV	3.5	3	3	3	3	3	3.5	4	4.5	4.5	4	4	3.5	3.5	3	3.5	3.5	2.5	20.5	24
Impatiens	Fiesta Burgundy Rose	BFP	3.5	3	3.5	3.5	3.5	3.5	3.5	3.5	3.5	3.5	4	3.5	3	3.5	3.5	3.5	3.5	3.5	24	24
Impatiens	Tempo Red	BG	3.4	3	3	3	3.5	3.5	4	4	4	4.5	4	3	3	3	3	3.5	3.5	3	24.5	24
Impatiens	Accent Limited Edition Mix	GOLD	3.4	3	3	3.5	3.5	3.5	3.5	3.5	4	4	4	4	3.5	3.5	3	3	3	3	22	24

Week	23	24	25	26	27	28	29	30	31	32	33	34	35	36	37	38	39
Date	6/3	6/10	6/17	6/24	7/1	7/8	7/15	7/22	7/29	8/5	8/12	8/19	8/26	9/2	9/9	9/16	9/23

Species	Cultivar	Source	Seasonal Average	Weekly ratings (week of the year) "-" indicates no flowering																Height	Diameter		
				23	24	25	26	27	28	29	30	31	32	33	34	35	36	37	38			39	
Impatiens	Accent Violet	GOLD	3.4	3	3	3.5	3.5	4	4	4.5	4	4	4	3.5	3	3.5	2.5	2.5	2.5	2.5	2.5	25.5	24
Impatiens	Showstopper Tropical Punch	BALL	3.4	3	3	3.5	4	3.5	4	4.5	4.5	4.5	4.5	3.5	2	2.5	2.5	2.5	2.5	2.5	2.5	28.5	24
Impatiens	Super Elfin Cherry	PA	3.3	3-	3-	3	3	3	3	3	3	3.5	3.5	4	3	3.5	3.5	4	4	3.5	16	19	
Impatiens	Dazzler Peacock Mix	BALL	3.3	3	3	3.5	3.5	3.5	3.5	4	4	3.5	3.5	3	3	3	3	3	3	3	21	24	
Impatiens	Carnival Deep Pink	DHN	3.3	3	3	3.5	3.5	3.5	4	4.5	4	4	4	4	2	2.5	2.5	2.5	2.5	2.5	2.5	29	24
Impatiens	Tempo Rose	BG	3.3	3	3	3.5	3.5	3.5	4	4.5	4.5	4.5	4	4	2	2	2	2.5	2.5	2.5	2.5	26	24
Impatiens	Dazzler Coral	BALL	3.3	3	3	3.5	3.5	3.5	4	4.5	4.5	4.5	4	4	2	2.5	2	2	2.5	2.5	2.5	22	24
Impatiens	Impulse White	NOV	3.3	3	2.5	3	3	3	3	3	3.5	3.5	3.5	3.5	3.5	3.5	3.5	3.5	3.5	3.5	3.5	27	24
Impatiens	Carnival Metallic Deep Salmon	DHN	3.2	3	3	3.5	3.5	3.5	4	4	4.5	4.5	4.5	4	2	2.5	2	2	2	2	2	28.5	24
Impatiens	Accent Watermelon	GOLD	3.2	3	3	3.5	3.5	3.5	4	4.5	4.5	4.5	4.5	4	2	2	2	2	2	2	2	28.5	24
Impatiens	Accent Salmon Picotee	GOLD	3.2	3	3	3.5	3.5	3.5	4	4.5	4.5	4.5	4.5	4	2	2	2	2	2	2	2	29	24
Impatiens	Accent Orange	GOLD	3.2	3	3	3.5	3.5	3.5	4	4	4	4	4	4	2	2.5	2.5	2.5	2.5	2	23.5	24	
Impatiens	Fiesta Sparkler Rose	BFP	3.2	3	3.5	3.5	3.5	3.5	3.5	3.5	3.5	3	3.5	3-	3-	3-	3	3	3	2.5	20	24	
Impatiens	Carnival Deep Rose	DHN	3.2	3	3	3.5	3.5	3.5	3.5	4.5	4.5	4.5	4	3.5	2	3	2	2	2	2	2	26.5	24
Impatiens	Carnival Scarlet	DHN	3.2	3	3	3.5	3.5	3.5	4	4	4.5	4.5	4.5	4	2	2	2	2	2	2	2	26.5	24
Impatiens	Tempo Peach Butterfly	BG	3.2	3	3	3.5	3.5	3.5	4	4.5	4.5	4.5	4.5	3.5	2	2	2	2	2	2	2	28	24
Impatiens	Accent Burgundy	GOLD	3.2	3	3	3	3.5	3.5	4	4.5	4.5	4.5	4	3.5	2	2	2	2	2.5	2.5	2.5	29	24
Impatiens	Accent Deep Pink	GOLD	3.2	3	3	3.5	3.5	3.5	4	4.5	4.5	4.5	4.5	3.5	2	2	2	2	2	2	2	27	24
Impatiens	Cajun Violet Impr.	NOV	3.2	3	3	3	3	3.5	3.5	3.5	3.5	3.5	3.5	3	3	3.5	3	3	3	2.5	19.5	24	
Impatiens	Super Elfin Melon	PA	3.2	3	3	3.5	3.5	3.5	4	4.5	4.5	4.5	4.5	3.5	2	2	2	2	2	2	2	26	24
Impatiens	Super Elfin White	PA	3.2	3	2.5	2.5	2.5	3	3	3.5	3.5	3.5	4	3.5	3.5	3.5	3.5	3	3	3	22.5	24	
Impatiens	Carnival Rose	DHN	3.1	3	3	3	3	3.5	4	4.5	4.5	4.5	4	3.5	2	2	2	2	2.5	2.5	2.5	25.5	24
Impatiens	Dazzler Punch	BALL	3.1	3	3	3.5	3.5	3.5	4	4.5	4.5	4.5	4	3.5	2	2	2	2	2	2	2	27	24
Impatiens	Super Elfin Salmon	PA	3.1	3	3	3.5	3.5	3.5	4	5	4	4	4	4	2	2	2	2	2	2	2	25	24
Impatiens	Carnival Red	DHN	3.1	3	3	3.5	3.5	3.5	4	4	4.5	4.5	4	3.5	2	2	2	2	2	2	2	26	24
Impatiens	Victorian Rose	GOLD	3.1	3	3	3.5	3	3.5	3.5	4	4	4.5	4	4	2	2	2	2	2.5	2.5	2.5	28	24
Impatiens	Accent Red	GOLD	3.1	3	3	3.5	3.5	3.5	4	4.5	4.5	4.5	4	3	2	2	2	2	2	2	2	25	24

Week	23	24	25	26	27	28	29	30	31	32	33	34	35	36	37	38	39
Date	6/3	6/10	6/17	6/24	7/1	7/8	7/15	7/22	7/29	8/5	8/12	8/19	8/26	9/2	9/9	9/16	9/23

Species	Cultivar	Source	Seasonal Average	Weekly ratings (week of the year) "-" indicates no flowering																	Height	Diameter	
				23	24	25	26	27	28	29	30	31	32	33	34	35	36	37	38	39			
Impatiens	Accent Salmon	GOLD	3.1	3	3	3.5	3.5	3.5	4	4.5	4.5	4.5	4	3	2	2	2	2	2	2	2	29	24
Impatiens	Accent Cranberry	GOLD	3.1	3	3	3.5	3.5	3.5	4	4.5	4.5	4.5	4	3	2	2	2	2	2	2	2	26.5	24
Impatiens	Dazzler Apricot	BALL	3.1	3	3	3.5	3.5	3.5	3.5	4	4	4	4.5	3.5	2	2.5	2	2	2	2	2	22.5	24
Impatiens	Showstopper Cherry	BALL	3.1	3	3	3	3	3.5	4	4.5	4.5	4.5	4	3.5	2	2	2	2	2	2	2	26	24
Impatiens	Cajun Pink	NOV	3.1	3	3	3	3	3.5	4	4.5	4.5	4.5	4.5	3	2	2	2	2	2	2	2	24	24
Impatiens	Cajun Garnet	NOV	3.1	3	3	3	3	3.5	4	4	4	4	4	3.5	2	2	2	2.5	2.5	2.5	25	24	
Impatiens	Impulse Cranberry	NOV	3.1	3	3	3.5	3	3.5	4	4	4	4	4	3.5	2	2	2	2	2.5	2.5	25	24	
Impatiens	Tempo Lavender	BG	3.1	3	3	3	3	3	4	4	4	4	4	3.5	3	2.5	2	2	2	2	2	15	22
Impatiens	Tempo Cherry Butterfly	BG	3.1	3	3	3.5	4	3.5	4	4.5	4.5	4.5	4	3	2	2	2	1.5	1.5	1.5	24.5	24	
Impatiens	Impulse Orange	NOV	3.1	3	3	3.5	3.5	3.5	4	4.5	4	4	4	3	2	2	2	2	2	2	2	24	24
Impatiens	Carnival Lilac	DHN	3.0	3	3	3	3	3.5	3.5	3.5	3.5	3.5	4	3	3	2.5	2.5	2.5	2.5	2	21	24	
Impatiens	Tempo Orange	BG	3.0	3	3	3	3	3	3	3	4	4	4	4	2	2.5	2.5	2.5	2.5	2	22	24	
Impatiens	Carousel Red	PA	3.0	3-	3	3.5	3	3	3.5	3.5	3.5	3.5	3.5	3	2.5-	2.5	2.5	2.5	2.5	2.5	2.5	21	24
Impatiens	Carousel Orange	PA	2.9	3	3	3.5	3.5	3.5	3.5	3.5	3.5	3.5	4	3	2	2	2	2	2	2	2.5	26	24
Jumbo Outback Daisy	Jumbo Misty Lilac	ECKE	2.8	3	3.5	3.5	3	3	3	2.5	2.5	2.5	2.5	2-	2.5-	2.5-	3-	3-	3	3	6.5	16	
Jumbo Outback Daisy	Jumbo Mauve	ECKE	2.5	3	3	3	3	3	3	3	3	3	3	2-	1.5-	1.5-	2-	2-	1.5-	1.5-	5.5	15	
Jumbo Outback Daisy	Jumbo Misty Pink	ECKE	2.1	3	3	2.5	2.5	2.5	2.5	2.5	2.5	2.5	2.5	2-	1.5-	1.5-	1.5-	1.5-	1.5-	.5-	6	14	
Linaria	Fantasy White	AT	1.5	3	3	3.5	3.5	3	2.5-	2.5	1.5-	1.5	1.5	.5-	0	0	0	0	0	0	8	10	
Linaria	Fantasy Yellow	AT	1.4	2-	3-	3	2.5	2.5	2.5-	2-	1.5-	1.5	1.5	1.5-	.5-	0	0	0	0	0	6	7.5	
Linaria	Fantasy Magenta Rose	AT	1.4	3	3	3.5	3	3	3-	2.5-	1-	1-	.5-	0	0	0	0	0	0	0			
Linaria	Fantasy Speckled Pink	AT	1.2	3-	3	2.5	2.5	2	2-	2-	1-	1-	1-	1-	0	0	0	0	0	0	5.5	4	
Linaria	Fantasy Blue	AT	1.1	3	3	3	2.5	2.5	2.5-	2-	.5-	.5-	0	0	0	0	0	0	0	0			
Lisianthus	Florida Blue	PA	2.5	3-	3-	3-	2.5	3	3.5	3.5	3	3	2	2.5	2-	2-	2-	2-	1.5-	1-	9	6	
Lobelia	Fan Deep Rose	BEN	3.0	3-	3-	3.5-	3-	3.5-	3.5-	3.5-	3-	2.5-	2.5-	3-	3-	3-	3-	3-	3	2.5	8	11	
Lobelia	Fan Scarlet	BEN	0.2	2-	1-	.5-	0	0	0	0	0	0	0	0	0	0	0	0	0	0			
Marigold	Durango Orange	PA	3.3	3	3	3	3	3	3.5	3.5	3.5-	3.5-	3.5-	4-	4	3.5	3.5	3	2.5	2.5	17	24	
Marigold	Safari Tangerine	BG	3.2	3	3	3	3.5	3.5	3.5	4	4	3.5	3.5	3.5	3	3	3	2.5	2.5	2	13	24	

Week	23	24	25	26	27	28	29	30	31	32	33	34	35	36	37	38	39
Date	6/3	6/10	6/17	6/24	7/1	7/8	7/15	7/22	7/29	8/5	8/12	8/19	8/26	9/2	9/9	9/16	9/23

Species	Cultivar	Source	Seasonal Average	Weekly ratings (week of the year) "-" indicates no flowering																	Height	Diameter
				23	24	25	26	27	28	29	30	31	32	33	34	35	36	37	38	39		
Marigold	Bonanza Bolero	PA	2.9	3	3	3.5	3.5	3.5	3.5	4	3.5	4	3.5	3	3	2.5	2.5	2	1	1	12	21
Marigold	Safari Red	BG	2.9	3	3	3.5	3.5	3.5	3.5	4	4	4	4	3	2.5	2.5	2.5	1.5	.5	.5	14	24
Marigold	Inca Orange	GOLD	2.7	3	3	3.5	3.5	3.5	3.5	3.5	3.5	3.5	3.5	3	2	2	2	1.5	1	1	23.5	24
Marigold	Disco Granada	BG	2.7	3	3	3.5	3	3.5	3.5	3.5	3.5	3.5	3.5	3.5	2	2	2	2	.5	.5	14	19
Marigold	Safari Yellow	BG	2.7	3	3.5	3.5	3	3.5	3.5	3.5	4	4	4	3	2.5	2	1.5	1	.5-	0	16	22.5
Marigold	Durango Yellow	PA	2.6	3	3	3	3.5	3.5	3.5	3.5	3.5	3.5	3.5	3	2.5	2	2	1	.5-	.5	15	23.5
Marigold	Antigua Gold	GOLD	2.5	3-	3-	3	3	3	3	3	3.5	3.5	3	2	2	2	2	1.5	1	1	14	21
Marigold	Inca Yellow	GOLD	2.5	3	3	3	3	3.5	3.5	3.5	3	3	3	2.5	2.5	2	1.5	1.5	.5	.5	18	24
Marigold	Inca Gold	GOLD	2.5	3	3	3	3	3	3	3.5	3.5	3.5	3	2.5	2	2	2	1.5	.5	.5	20	24
Marigold	Durango Spry	PA	2.5	3	3	3	3	3	3	3	3	3.5	3	2.5	2-	2	2	1.5	1	1	11.5	19.5
Marigold	Antigua Orange	GOLD	2.4	3-	3	3	3	3	3	3	3	3.5	3.5	2.5	2	2	1.5	1.5	.5	.5	13	21
Marigold	Antigua Primrose	GOLD	2.4	3	3	3	3	3	3	3	3.5	3.5	3	2	1.5	1.5	1.5	1-	1-	.5	9.5	23
Marigold	Discovery Yellow	BG	2.2	3	3	3	3	3	3	3	3	3	2.5	2	1.5	1.5	1.5	1-	.5-	.5	11	16
Marigold	Discovery Orange	BG	2.2	3	3	3	3	3	3	3	3	3	3	2	1.5	1.5	1	.5	.5	.5	11	15
Marigold	Antigua Yellow	GOLD	2.1	3	3	3	3	3	3	3	3	3	2.5	2	1.5-	1-	.5-	.5-	.5-	0	11	19
Marigold	Atlantis Yellow	BG	2.0	3	3	3	3.5	3.5	3.5	3.5	3.5	3	2	1.5	.5	.5	.5	0	0	0	13	18
Marigold	Atlantis Orange	BG	2.0	3	3	3	3.5	3	3	3	2.5	2	2	2	1.5	1	.5	.5	.5	0	10	19
Melampodium	Million Gold	AT	2.5	3	3	3.5	3.5	3.5	3.5	3.5	3.5	3.5	3.5	3.5	2	1.5	1	.5	.5	0	19.5	24
Melampodium	Derby	BEN	2.4	3	3	3	3.5	3.5	3.5	3.5	3	2.5	2.5	3	2.5	2	1	.5-	.5	0	18	23
Mexican Sunflower	95F19	AAS	1.6	3.5	3.5	3.5	3.5	3.5	2.5	2	1.5-	1.5-	1.5-	.5	.5	0	0	0	0	0	19	20
Narrow-Leaf Zinnia	Crystal White	AT	3.5	3	3	3	3	3.5	3.5	3.5	4	4	4	5	4	4	3.5	3	3	2.5	15	20
New Guinea Impatiens	Paradise Timor	ECKE	4.0	3	3.5	4	4	4	4	4.5	4.5	4.5	4.5	3.5	3.5	3.5	4	4	4.5	4.5	15	20
New Guinea Impatiens	Deka White	OGL	3.9	3-	3	3	3.5	3.5	4	4.5	5	5	5	3.5	3.5	3.5	4	4.5	4.5	4	15	23
New Guinea Impatiens	Paradise Tonga	ECKE	3.9	3.5	3.5	3.5	3.5	3.5	4	4.5	4.5	4.5	4.5	3	3	3.5	4.5	4.5	4.5	4.5	15.5	24
New Guinea Impatiens	Pure Beauty Aglia	ECKE	3.7	3	3.5	3.5	3.5	3.5	4	4.5	4.5	4.5	4.5	4	3.5	3.5	3.5	3.5	3.5	3	13	21
New Guinea Impatiens	Paradise Antigua	ECKE	3.7	3	3	3	3	3	3.5	4	4.5	4.5	4.5	3.5	3.5	3.5	4	4	4.5	4	13	20
New Guinea Impatiens	Paradise Samoa	ECKE	3.7	3	3.5	3.5	3.5	3.5	4	4.5	4.5	4.5	4.5	3	2.5	2.5	4	4	4	4	14	18.5

Week	23	24	25	26	27	28	29	30	31	32	33	34	35	36	37	38	39
Date	6/3	6/10	6/17	6/24	7/1	7/8	7/15	7/22	7/29	8/5	8/12	8/19	8/26	9/2	9/9	9/16	9/23

Species	Cultivar	Source	Seasonal Average	Weekly ratings (week of the year) "-" indicates no flowering																	Height	Diameter
				23	24	25	26	27	28	29	30	31	32	33	34	35	36	37	38	39		
New Guinea Impatiens	Paradise Pascua	ECKE	3.7	3	3.5	3.5	4	4	4	4	4	4.5	4.5	3	3	3.5	3.5	3.5	3.5	3.5	13	18.5
New Guinea Impatiens	Pure Beauty Apollon	ECKE	3.6	3	3.5	3.5	3.5	3.5	4	4.5	4.5	4.5	4	3	3	3	3.5	3.5	3.5	3.5	15	24
New Guinea Impatiens	Paradise Woya	ECKE	3.6	3	3.5	3.5	3.5	3.5	4	4	4	4	4	3.5	3.5	3.5	3.5	3.5	3.5	3	13	17
New Guinea Impatiens	Celebration Lavender Glow	BFP	3.6	3	3.5	3.5	3.5	3.5	3.5	3.5	4.5	4.5	4.5	3	3-	3-	3.5	3.5	3.5	3.5	13.5	18
New Guinea Impatiens	Paradise Tarawa	ECKE	3.5	3	3.5	3.5	3.5	3.5	3.5	3.5	4	4	4	3	3-	3.5	3.5	3.5	3.5	3.5	14	18
New Guinea Impatiens	Paradise Guadeloupe	ECKE	3.5	3	3	3	3	3.5	3.5	3.5	4	4	4.5	3.5	3	3.5	3.5	3.5	3.5	3.5	14	18
New Guinea Impatiens	Pure Beauty Marpesia	ECKE	3.5	3	3	3	3	3	3.5	4	4	4	4	3	3.5	3.5	3.5	3.5	4	3.5	15	22
New Guinea Impatiens	Celebration Rose	BFP	3.5	3	3.5	3.5	3.5	3.5	3.5	3.5	3.5	3.5	3.5	4	3.5	3.5	3.5	3.5	3.5	3	13	22
New Guinea Impatiens	Paradise Moala	ECKE	3.4	3	3	3	3	3	3.5	3.5	4	4	3.5	3.5	3	3.5	3.5	3.5	3.5	3.5	13	18
New Guinea Impatiens	96-1967-3	OGL	3.4	3	3	3	3	3	3.5	3.5	3.5	4	4	3.5	3.5	3.5	3.5	3.5	3.5	3	13	21
New Guinea Impatiens	Paradise Moorea	ECKE	3.4	3	3	3	3	3	3.5	3.5	4	4	4	3	3-	3-	3.5	3.5	3.5	3.5	14	16
New Guinea Impatiens	Pure Beauty Aruba	ECKE	3.4	3	3	3	3	3	3.5	4	4.5	4.5	4	3	3-	3-	3.5	3.5	2.5	3	13	24
New Guinea Impatiens	Celebration Wild Plum	BFP	3.3	3	3	3	3	3	3	3.5	3.5	4	4.5	3	3	3	3	3.5	3.5	4	11	22
New Guinea Impatiens	Celebration Electric Rose	BFP	3.3	3	3	3	3	3	3	3.5	3.5	3.5	3.5	3.5	3.5	3.5	3.5	3.5	3.5	3	12.5	18
New Guinea Impatiens	Celebration Salmon	BFP	3.3	3	3	3	3	3	3	3	3.5	3.5	3.5	3.5	3	3.5	3.5	3.5	3.5	3.5	14	18
New Guinea Impatiens	Paradise Toga	ECKE	3.3	3	3.5	3.5	3.5	3.5	3.5	4.5	4.5	4.5	3.5	2.5	2.5-	2.5	2.5	2.5	2.5	3	12	17.5
New Guinea Impatiens	Java Pink	PA	3.2	3-	3-	3	3	3	3	3	3	3.5	3.5	3.5	3.5	3.5	3.5	3.5	3.5	3	16	21
New Guinea Impatiens	Celebration Frost	BFP	3.2	3	3	3	3	3	3.5	4	4	4	4	3	2.5	2.5	3	3	3	3	14	18
New Guinea Impatiens	96-1550-2	OGL	3.2	3	3	3	3	3	3	3	3.5	3.5	3.5	3	3	3	3.5	3.5	3.5	3.5	11	18.5
New Guinea Impatiens	96-1504-4	OGL	3.2	3	3	3	3	3	3.5	3.5	4	4	3.5	3	3	3	3	3	3	2.5	10	17
New Guinea Impatiens	Pure Beauty Neptis	ECKE	3.1	3	3	3	3	3	3	3.5	3.5	3.5	3.5	3	3	3.5	3	3	3	3	10.5	16
New Guinea Impatiens	Pure Beauty Jolana	ECKE	3.1	3	3	3	3.5	3.5	3.5	3.5	3.5	3.5	3.5	2.5	3-	3	3	2.5	2.5	2.5	11	15.5
New Guinea Impatiens	Paradise Xanthia	ECKE	3.1	3	3.5	3.5	3	3	3	3	3	3	3.5	3	3	3	3	3	3	3	10.5	16
New Guinea Impatiens	Paradise Lopinga	ECKE	3.0	3	3	3	3	3	3	3	3	3	3	3	3-	3	3	3	3	3	9	15
New Guinea Impatiens	Java Lilac Flame	PA	2.9	3-	2.5-	2.5-	2.5	2.5	2.5	3	3	3	3	3-	3-	3	3	3	3	3	17	15
New Guinea Impatiens	Pure Beauty Lycia	ECKE	2.8	3	3	3	3	3	3	3	3	3	3	3	2.5	2.5	2.5	2.5	2	2	10	15.5
New Guinea Impatiens	96-1737-1	OGL	2.7	3	3	3	2.5	2.5	3	3	3	3	3	3	2.5	2.5	2.5	2.5	2.5	2.5	8.5	13

Week	23	24	25	26	27	28	29	30	31	32	33	34	35	36	37	38	39
Date	6/3	6/10	6/17	6/24	7/1	7/8	7/15	7/22	7/29	8/5	8/12	8/19	8/26	9/2	9/9	9/16	9/23

Species	Cultivar	Source	Seasonal Average	Weekly ratings (week of the year) "-" indicates no flowering																Height	Diameter			
				23	24	25	26	27	28	29	30	31	32	33	34	35	36	37	38			39		
New Guinea Impatiens	96-1447-1	OGL	2.7	3	3	2.5	2.5	3	3	3	3	3	3	3	2.5	2.5	2.5	2.5	2.5	2.5	2.5	2.5	9	16
New Guinea Impatiens	96-1491-1	OGL	2.7	3	3	3	2.5	3	3	3	3	3	3	3	3	3	2.5	2.5	2	2	2	2	10.5	15
New Guinea Impatiens	Celebration Sangria	BFP	2.7	3	3	3	3	3	3	3	3	3	3	3	3	3	2	2	2	2	2	2	10	16
New Guinea Impatiens	Java Orange Flame	PA	2.7	3-	3-	3-	2.5-	2.5-	3	3.5	3.5	3.5	3.5	2.5	2	2	2	2	2	2	2	2	16.5	14
New Guinea Impatiens	Java Pearl	PA	2.6	3-	3	3	3	3	3	3	3	3	3	3	2	2	2	2	2	2	2	2	15	15.5
New Guinea Impatiens	96-1422-4	OGL	2.5	3	3	2.5	2.5	2.5	2.5	2.5	2.5	2.5	2.5	2-	2.5-	2.5	2.5	2.5	2	2	2	2	8.5	14
New Guinea Impatiens	95-657-28	OGL	2.4	3	3	3	2.5	3	3	2.5	2.5	2.5	2.5	2	2	2	2	2	2	2	2	2	9	13
New Guinea Impatiens	96-1472-2	OGL	2.4	3	3	3	2.5	2.5	2.5	3	2.5	2.5	2.5	2	2-	2-	2-	2-	2-	2-	2-	2	8.5	9.5
Nicotiana	Hummingbird Pink	BALL	1.6	3	3.5	3.5	3.5	3.5	3.5	3.5	2	1.5-	1.5-	1-	.5-	0	0	0	0	0	0	0	9	15
Nicotiana	Hummingbird Red	BALL	1.3	3	3	3	2.5	2.5	2.5	2	1	1	1	1	0	0	0	0	0	0	0	0	10.5	11
Nicotiana	Havana Mix	DHN	1.3					3	3	3	1.5	1.5	1.5	2	1	.5	0	0	0	0	0	0	12	8
Nicotiana	Hummingbird Cherry Blossom	BALL	1.3	3	3	3	2.5	2.5	2.5	2	1	1	1-	.5-	0	0	0	0	0	0	0	0	10.5	11
Osteospermum	Passion Mix	AT	1.6	3-	3-	3-	3	3	3	2.5	1.5	1-	1	2-	1-	.5	0	0	0	0	0	0	9.5	13.5
Outback Paper Daisy	Matilda Yellow	ECKE	1.7	3	2.5	2.5	2.5	2	2	1.5	1.5	1.5	1.5	4	3	2	0	0	0	0	0	0	10	20
Pentas	New Look Violet	BEN	3.0	3-	2-	2-	2-	2-	2-	2-	2.5-	2.5	3	4	4	4	4	4	4	4	4	4	9	13.5
Pentas	New Look Red	BEN	3.0	3-	2-	2-	1.5-	2-	2-	2-	2.5-	2.5-	3-	3.5-	3.5	4	4	4	4	4.5	4.5	9	12	
Pentas	New Look Pink	BEN	2.9	3-	2-	2-	2-	2-	2-	2-	2.5-	2.5-	3	3.5	3.5	4	4	4	4	4	4	4	12	9
Petunia	Surfinia Pastel Pink	BCG	4.4	3.5	4.5	4.5	4.5	4.5	4.5	4.5	5	5	5	4	4	4	4.5	4.5	4.5	4.5	4.5	4.5	7.5	24
Petunia	Rose Wave	PA	4.4	3.5	4	4	4.5	5	5	5	5	5	5	4.5	4.5	4	4.5	3.5	4	4	4	9.5	24	
Petunia	Misty Lilac Wave	PA	4.4	3.5	3.5	4	4	4.5	5	5	5	5	5	3.5	3.5	4	4.5	4.5	5	5	5	9.5	24	
Petunia	Purple Wave	AAS	4.2	3	3	3	3.5	3.5	4	4.5	5	5	5	4.5	5	4.5	4.5	4.5	4.5	4.5	4.5	4.5	6	24
Petunia	Surfinia Brilliant Pink	BCG	4.2	3.5	4.5	4.5	4.5	4.5	4.5	4.5	4.5	4.5	4.5	4	3.5	3.5	3.5	4	4.5	4	4.5	4	7.5	24
Petunia	Liricashower Rose	SAK	4.1	3.5	3.5	4	4.5	4.5	4.5	4.5	5	5	5	3.5	3.5-	3.5-	4	4	4	4	4	3	24	
Petunia	Surfinia Purple	BCG	4.1	3	4	4	4.5	4.5	4.5	4.5	4.5	4.5	4.5	4	4	4	4	4	4	4	4	4	7	24
Petunia	Surfinia White	BCG	4.0	3.5	4	4.5	4.5	4.5	4.5	4.5	4.5	4.5	4.5	3	3	3	4	4	4	4	4	8	24	
Petunia	Trailblazer Violet	NOV	3.8	3-	3	3	3	3.5	3.5	3.5	3.5	4	4.5	3.5	4	4	4	4.5	5	4.5	11	24		
Petunia	Hurrah Plum	NOV	3.6	3	3	3	3	3	3.5	3.5	3.5	4	4.5	3.5	4	4	4	4	4	4	4	4	15.5	24

Week	23	24	25	26	27	28	29	30	31	32	33	34	35	36	37	38	39
Date	6/3	6/10	6/17	6/24	7/1	7/8	7/15	7/22	7/29	8/5	8/12	8/19	8/26	9/2	9/9	9/16	9/23

Species	Cultivar	Source	Seasonal Average	Weekly ratings (week of the year) "-" indicates no flowering																Height	Diameter		
				23	24	25	26	27	28	29	30	31	32	33	34	35	36	37	38			39	
Petunia	PrimeTime Rose	GOLD	3.6	3-	3-	3	3	3	3.5	3.5	4	4.5	4.5	3.5	3.5	3	4	4	4	4	4	8.5	20
Petunia	Dreams Midnight	PA	3.5	3	3.5	3.5	3.5	3.5	3.5	3.5	3	3	3.5	3.5	4	3.5	3.5	4	4	4	4	9	24
Petunia	Liricashower Blue	SAK	3.5	3	3.5	3.5	3.5	3.5	3.5	3.5	3.5	3.5	3.5	4	4	3.5-	3.5	3.5	3.5	3.5	3.5	2.5	19.5
Petunia	Surfinia Violet	BCG	3.5	3.5	4	4.5	4.5	4.5	4.5	4.5	4.5	4.5	4	4	3	2	2	2	2	2	2	6	24
Petunia	Fantasy Blue	GOLD	3.5	3-	3-	3	2.5	3	3.5	4	4	4.5	4.5	3.5	3.5	3	3.5	3.5	3.5	3.5	3.5	9.5	16
Petunia	PrimeTime Lavender	GOLD	3.5	3	3	3.5	3.5	3	3	3	3.5	3.5	4	3.5	4	4	4	3.5	3.5	3.5	12	24	
Petunia	Kahuna Violet	NOV	3.4	3-	3	3	3.5	3.5	3.5	3.5	3.5	3.5	3.5	3.5	4	3.5	3.5	3.5	3.5	3.5	16	24	
Petunia	Fantasy Pink	GOLD	3.4	3	3	3	3	3	3.5	4	4	4	4.5	3.5	4	4	3.5	2.5	2.5	2.5	9	13.5	
Petunia	Hurrah Pink Flare	NOV	3.4	3	3.5	3.5	4	3.5	3	3	4	4.5	4.5	3.5	3.5	3	3	3	2.5	2.5	10.5	24	
Petunia	Ultra Lilac	GOLD	3.3	3-	3	3	3	3	3	3	3.5	3.5	4	3.5	3.5	3.5	3.5	3.5	3.5	3.5	11	21	
Petunia	Pink Madness	BALL	3.3	3	3.5	3.5	3.5	3	3	3	3.5	3.5	4	3.5	3.5	3	3	3	3	3	13.5	24	
Petunia	Fantasy Pink Morn	GOLD	3.2	3-	3	3	3	3	3	3.5	4	4	4	3.5	3	3	3	3	3	2.5	9	14	
Petunia	Fantasy Salmon	GOLD	3.2	3	3	3.5	3.5	3.5	4	4	4.5	4.5	4.5	3	2.5	2.5	2.5	2.5	2	1.5	10	20	
Petunia	Pink Morn Storm	GOLD	3.2	3-	3	3	3	3	3.5	4	3.5	3.5	3.5	3.5	3	3	3	3	3	2.5	13	24	
Petunia	PrimeTime Blue	GOLD	3.2	3-	3-	3	3	3	3	3.5	3.5	4	4	3	3	3	3	3	3	3	8.5	24	
Petunia	PrimeTime Mid Blue	GOLD	3.1	3	3.5	3.5	3.5	3	3	3	3.5	3.5	3.5	3	2.5	2.5	3	3	3	3	14	24	
Petunia	Ultra Blue	GOLD	3.1	3-	3	3	3	3	3	3	3.5	4	4	3	3	2.5	3	3	3	3	11	24	
Petunia	Celebrity Carmine	BG	3.1					3	3	3	3	3	3.5	4	4	3	3	3	2.5	2.5	11	20	
Petunia	Fantasy Carmine	GOLD	3.1	3-	3	3	3	3.5	3.5	3.5	4	4.5	4.5	3.5	3	3.5	2.5	1.5	1.5	1.5	11	19	
Petunia	Fantasy Ivory	GOLD	3.1	3-	3-	3	3	3.5	3.5	3.5	4	3.5	3.5	3.5	3	2.5	2.5	2.5	2.5	2	9	15	
Petunia	PrimeTime Red	GOLD	3.1	3-	3	3	2.5	3	3	3	3.5	3.5	4	3	3.5	3.5	3	2.5	2.5	2.5	9.5	23	
Petunia	Carmine Madness	BALL	3.1	3	3	3	2.5	3	3	3	3	3.5	4	4	3.5	3	3	2.5	2.5	2.5	10	24	
Petunia	Fantasy Crystal Light Salmon	GOLD	3.0	3-	3	3	2.5	3	3.5	3.5	4	4	4.5	3	2.5	2	2.5	2.5	2.5	2.5	5	16	
Petunia	Pink Storm	GOLD	3.0	3-	3-	3	2.5	2.5	3	3	3.5	3.5	3.5	3	3	3	3	3	3	3	7	13	
Petunia	Fantasy Red	GOLD	3.0	3	3	3.5	3.5	3.5	3.5	4	4	4.5	5	2.5	2	2.5	2	2	1.5	1	8	21	
Petunia	Ultra Scarlet	GOLD	3.0	3-	3	3	2.5	3	3.5	3.5	3.5	3.5	3.5	3	2	2.5	3	3	2.5	2.5	9	23	
Petunia	Double Madness Sheer	BALL	3.0	2.5-	3	3	3	3	3	3	3	3	3.5	3.5	3	3	3	3	2.5	2.5	12	17	

Week	23	24	25	26	27	28	29	30	31	32	33	34	35	36	37	38	39
Date	6/3	6/10	6/17	6/24	7/1	7/8	7/15	7/22	7/29	8/5	8/12	8/19	8/26	9/2	9/9	9/16	9/23

Species	Cultivar	Source	Seasonal Average	Weekly ratings (week of the year) "-" indicates no flowering																Height	Diameter	
				23	24	25	26	27	28	29	30	31	32	33	34	35	36	37	38			39
Petunia	Celebrity Red	BG	2.9	3-	3-	2.5-	2.5	3	3	3	3.5	3.5	3	3	2.5	3	3	3	3	2.5	9	15
Petunia	Double Madness Rose	BALL	2.9	3-	3-	3	3	3	3	3	3	3.5	3.5	3.5	3	3	3	2.5	2	2	13.5	24
Petunia	Bravo Lavender	NOV	2.9	3	3	3	3	3	3.5	4	4	3.5	3.5	2.5	2	2.5	2.5	2.5	2	2.5	10	21.5
Petunia	Ultra Sky Blue	GOLD	2.9	3-	3	3	3	3	3	3.5	3.5	3.5	3.5	2	2	2	2.5	3	3	3	11.5	20
Petunia	Flash Red	NOV	2.9	3-	3	3	2.5	3	3	3.5	3.5	3.5	4	3	2	2.5	2.5	2.5	2.5	2.5	10.5	22
Petunia	Salmon Storm	GOLD	2.9	3-	3	3	3	3	3	3.5	3.5	4	4	3	2	2	2.5	2.5	2.5	2	7.5	22
Petunia	PrimeTime Limited Edition Mix	GOLD	2.9	3-	3	3	3	3	3.5	4	4	4	4.5	2	2	2	2	2	2	2	18.5	24
Petunia	Ultra Red	GOLD	2.9	3-	3	3	2.5	3	3	3	3	3.5	4	2.5	2	3	3	2.5	2.5	2.5	9	24
Petunia	Ultra Salmon	GOLD	2.9	3-	3	3	3	3	3	3.5	3.5	3.5	3.5	3	2	2	2.5	2.5	2.5	2.5	9	22
Petunia	Hurrah Carmine	NOV	2.9	3	3	3	3	3	3	3	3.5	3.5	4	3	3	2.5	2.5	2	2	2	15	25
Petunia	Lavender Storm	GOLD	2.9	3-	3	3	3	3	3	3.5	3.5	3.5	3.5	3	2	3	2.5	2	2	2	10	19
Petunia	White Madness	BALL	2.8	3	3.5	4	4	3.5	3	3	4	3.5	3.5	2	2	2	2	2	1.5	1.5	11	24
Petunia	PrimeTime White	GOLD	2.8	3-	3	3	3	3	3	3	3	3	3.5	3	3	2.5	2.5	2	2	2	15	24
Petunia	Ultra Plum	GOLD	2.8	3-	3	3	3	3	3	3	3	3	3	2	2.5	2.5	2.5	2.5	2.5	2.5	5	24
Petunia	Plum Crazy Madness	BALL	2.8	3	3	3.5	3.5	3	3	3	3.5	3.5	4	2	2	2	2	2	2	2	12	20
Petunia	PrimeTime Crystals Mix	GOLD	2.7	3-	3	3	3	3	3.5	3.5	3.5	3.5	4	2	2	2	2	2	2	1.5	12.5	24
Petunia	Hurrah Salmon Chiffon	NOV	2.7	3	3	3	3.5	3.5	3	3	3	3	3.5	2.5	2	2	2.5	2	2	2	8	19
Petunia	Flash Lavender	NOV	2.7	3-	3-	3	2.5	2.5	2.5	2.5	2.5	2.5	2.5	2	2	3	3	3.5	3	3	9	15
Petunia	Fantasy Crystal Red	GOLD	2.7	3-	3-	3	2.5	3	3	3	3	3.5	3.5	3	2	2	2	2	2	2	8	17
Petunia	Bravo Salmon Veined	NOV	2.7	3-	3	3	3	3	3	3	3	3.5	3.5	2.5	2	2	2	2	2	2	8	23
Petunia	Dreams Red	PA	2.6	3	3	3	3	3	3.5	3	3	3	3	2.5	2	2	2	2	2	2	7.5	21
Petunia	White Storm	GOLD	2.6	3-	3-	3	3	3	3	3	3	3	3	2.5	2	2	2	2	2	2	13.5	16
Petunia	Bravo Carmine	NOV	2.6	3-	3-	3	3	3	3	3	3	3	3	3	2	2	2	1.5	1.5	1.5	11.5	21
Petunia	Ultra Peppermint	GOLD	2.5	3-	3-	3	3	3	3	3	3	3.5	3	1.5	1.5	1.5	2	2	2	2	11	24
Petunia	Ultra Limited Edition Mix	GOLD	2.5	3.5	3.5	4	3.5	3	2.5	2.5	2.5	2	2	2	2	2	2	2	2	1.5	13.5	24
Petunia	Celebrity Lilac	BG	2.5					3	3	3	3	3	3	2	2	2	2	2	2	2	9.5	18
Petunia	Aladdin Nautical Mix	BG	2.5					3	3	3	3	3	3	2	2	2	2	2	2	2	8	13

Week	23	24	25	26	27	28	29	30	31	32	33	34	35	36	37	38	39
Date	6/3	6/10	6/17	6/24	7/1	7/8	7/15	7/22	7/29	8/5	8/12	8/19	8/26	9/2	9/9	9/16	9/23

Species	Cultivar	Source	Seasonal Average	Weekly ratings (week of the year) "-" indicates no flowering																Height	Diameter			
				23	24	25	26	27	28	29	30	31	32	33	34	35	36	37	38			39		
Petunia	Double Madness Mix	BALL	2.4	3-	3	3	3	3	3	3	3	3	3	3	2	2	1.5	1.5	1.5	1.5	1.5	1.5	19	24
Petunia	Hurrah White	NOV	2.3	3-	3-	2.5	2.5	2.5	2.5	2.5	2.5	2.5	2.5	2.5	2.5	2	2	2	1.5	1.5	1.5	1.5	11	24
Petunia	Ultra White	GOLD	2.2	3-	3-	3	2.5	2.5	2.5	2.5	2.5	2.5	2.5	2.5	2	1.5	1.5	1.5	1.5	1.5	1.5	1.5	11.5	19.5
Petunia	Celebrity White	BG	2.2	3	3	3	3	3	3	3	3	2.5	2.5	3	2	1	.5	.5	.5	.5	.5	.5	10	23
Petunia	Bravo White Impr.	NOV	2.1	3	3.5	3.5	3	2.5	2.5	2.5	2.5	2.5	2.5	2.5	2	1	1	1	1	1	1	1	9.5	24
Petunia	WhiteTitan	SAK	2.0	3-	3-	2.5-	2	3	2.5	2.5	2.5	2.5	2.5	2.5	1.5	1	1	1	1	1	1	1	10	21
Phlox	21st Century	BALL	1.8	3	3	3	3	3	2	1.5	1.5	1	1	2	3	1	1	.5-	.5	.5	.5	.5	6	12
Phlox	Premium Scarlet	GRS	1.0	2-	2	2	2	2	2	1	.5	.5	.5	1	1	0	0	0	0	0	0	0	3.5	6
Phlox	Crystal Purple w/White	DHN	0.7	3-	2.5	2	2	2	1	0	0	0	0	0	0	0	0	0	0	0	0	0		
Phlox	Crystal Red w/White	DHN	0.7	2-	2	2	2	2	1.5	.5	0	0	0	0	0	0	0	0	0	0	0	0		
Plectranthus	Silver	BWN	4.1	3.5-	3.5-	3.5-	3.5-	4-	4-	4	4	4	4.5	4.5	4.5	4.5	4.5	4.5	4.5	4.5	4.5	4.5	26	24
Plectranthus	Variegata	BWN	3.7	3-	3-	3-	3.5-	4-	4-	4-	4.5-	4.5-	4.5-	4-	3.5-	3-	3.5-	3.5-	3.5-	3.5-	3.5	3.5	15	24
Plectranthus	Athens' Gem	BWN	3.3	3-	3-	3-	3-	3-	3.5-	3.5-	3.5-	4-	4.5-	4.5	4	3.5	2.5	2.5	2.5	2.5	2	2	24	24
Plectranthus	Lime Lobo	BWN	2.1	2-	2-	2-	2-	2-	2-	2-	2.5-	2.5-	2.5-	2-	1.5-	1-	2.5-	2.5-	2.5-	2.5-	2.5-	2.5-	9.5	9.5
Portulaca	Sundial Pink	AAS	2.9	3	3.5	4	4	4	4.5	4.5	4.5	4	3.5	3	2.5	1.5	1	1	.5	.5	.5	.5	6.5	24
Portulaca	Sundial Peach	AAS	2.5	3	3	3.5	3.5	4	4	4	3	3	2.5	2.5	2	1	1	1	.5	.5	.5	.5	7	24
Portulaca	Sundial Fuchsia	BG	2.3	3	3	3	3.5	3.5	3.5	3.5	3	3	2.5	2.5	2	1	.5	.5	.5	.5	0	0	7.5	24
Portulaca	98BP06	AAS	2.0	3	3	3.5	3.5	3.5	3.5	3.5	2.5	2	1.5	2	1	.5	.5	.5	0	0	0	0	7	18
Primula	Libre Lavender	GOLD	1.1	3-	3-	3-	2.5-	2-	2-	2-	1-	.5-	0	0	0	0	0	0	0	0	0	0		
Red Hot Poker	Flamenco	BEN	0.1	1.5-	1-	0	0	0	0	0	0	0	0	0	0	0	0	0	0	0	0	0		
Rudbeckia	Indian Summer	AAS	2.7	3-	3-	3-	3	3	3	3	3	3	3	3	3	3.5	3.5	2.5	1.5	1.5	.5-	.5-	16.5	18
Rudbeckia	Sonora	BEN	2.1	3-	3-	3-	3.5	3	3	3	2.5	2.5	2.5	2	2	2	1-	.5-	0	0	0	0	11	13
Salvia	Red Hot Sally	BALL	3.5	3	3	3.5	3.5	3.5	4	4.5	4.5	4.5	4.5	4.5	4	3	2.5	3	3	3	2.5	2.5	11	20
Salvia	Reference	BEN	3.4	3-	3-	3-	3	3	3.5	3.5	4.5	4.5	4.5	4.5	3.5	3	2.5	3.5	3.5	3.5	3.5	3.5	13	17
Salvia	Red Vista	PA	3.4	3	3	3.5	3	3.5	4	4.5	4.5	4.5	4.5	4.5	4	3	3	3	3	2.5	2	2	10.5	18
Salvia	Signum	BG	3.4	3-	3-	3	3.5	3.5	3.5	4	4.5	4.5	4.5	4.5	3.5	3	2.5	3	3	3	3	3	12	17
Salvia	Purple Vista	PA	3.4	3	3	3	3	3.5	4	4.5	4.5	4.5	4.5	4.5	4	3	2.5	2.5	2.5	2.5	2.5	2.5	10	16

Week	23	24	25	26	27	28	29	30	31	32	33	34	35	36	37	38	39
Date	6/3	6/10	6/17	6/24	7/1	7/8	7/15	7/22	7/29	8/5	8/12	8/19	8/26	9/2	9/9	9/16	9/23

Species	Cultivar	Source	Seasonal Average	Weekly ratings (week of the year) "-" indicates no flowering																	Height	Diameter
				23	24	25	26	27	28	29	30	31	32	33	34	35	36	37	38	39		
Salvia	Salsa Light Purple	GOLD	3.2	3	3	3	3	3.5	3.5	4	4.5	4.5	4.5	3.5	3	2	2.5	2.5	2.5	2.5	11.5	18
Salvia	Lavender Vista	PA	3.2	3	3	3.5	3	3.5	4	4.5	4.5	4.5	4.5	3	2.5	2	2.5	2.5	2.5	2	9.5	16
Salvia	Salsa Rose	GOLD	3.1	3	3	3	3	3.5	4	4	4	4	4	3.5	3	2	2.5	2.5	2.5	2	10.5	17.5
Salvia	White Vista	PA	3.1	3	3	3.5	3	3.5	3.5	3.5	4	4	4	3	3	2.5	2.5	2.5	2.5	2.5	8	14
Salvia	Salsa Scarlet	GOLD	3.0	3	3	3	3	3	3	3.5	3.5	4	4	4	3	2.5	2.5	2	2	2	11	16
Salvia	Burgundy Vista	PA	3.0	3	3	3.5	3.5	3.5	4	4	3.5	3.5	4	4	2.5	2	2	2	1.5	1.5	9.5	17
Salvia	Salsa Rose Bicolor	GOLD	3.0	2.5	3	3	3	3	3.5	4	4	4.5	4.5	3	2.5	2	2	2	2	2	10.5	16
Salvia	Salsa Purple	GOLD	2.9	3	3	3.5	3	3	3	3.5	4	4	4	3.5	2.5	2	2	2	2	2	9	15.5
Salvia	Salsa Mix	GOLD	2.9	3	3	3	3	3.5	3.5	3.5	4	4	4	3.5	2	2	2	2	2	2	9	12.5
Salvia	Salsa White	GOLD	2.9	3	3	3.5	3.5	3.5	3.5	3	3.5	3.5	3.5	3	2.5	2	2	2	2	2	10	12
Salvia	Salsa Salmon Bicolor	GOLD	2.9	3	3	3	3	3	3	3	4	4	4	3	2.5	2	2	2	2	2	9.5	15.5
Salvia	Salsa Salmon	GOLD	2.8	2.5	3	3	3	3.5	3.5	3.5	3.5	3.5	3.5	3	2	2	2	2	2	2	8.5	12.5
Salvia	Salsa Scarlet Bicolor	GOLD	2.8	3	3	3	3	3	3	3	3.5	3.5	3.5	3	2	2	2	2	2.5	2	11	15
Salvia	Salsa Burgundy	GOLD	2.7	3	3	3	3	3.5	3.5	4	3.5	3.5	3.5	3	2	1.5	1.5	1.5	1.5	1.5	10	13.5
Salvia	Strata	AAS	2.2	2-	2-	2-	2-	2-	2.5	2.5	2.5	2.5	2.5	3	2	2	2	2	2	2	9.5	9.5
Scaevola	Outback Purple Fan	ECKE	4.3	3.5	3.5	4	4.5	4.5	5	5	5	5	5	5	5	3.5	4	3.5	3	3.5	16	24
Setcreasea		BWN	3.1		3-	3-	3-	3-	3-	3-	3	3	3	3-	3-	3	3.5-	3.5	3.5	3.5	13.5	24
Snapdragon	Longshot Red & Yellow	GRS	3.0	3	3	3.5	3.5	3.5	3.5	3.5	3.5	3.5	3.5	2	2.5	2.5	2.5	2.5-	2.5-	2.5	7	14
Snapdragon	La Bella Red	GOLD	2.8	3	3	3.5	3.5	3.5	4	4	4	4	4	2.5	1.5	1.5-	1.5-	1.5	1.5	1.5	9.5	11.5
Snapdragon	La Bella Red & White	GOLD	2.6	3	3	3	3	3-	3	3	3	3	3	2.5	2	2	2	2	2	2	9	10.5
Snapdragon	La Bella Pink	GOLD	2.3		3-	3-	2.5-	3-	3	3	3	2.5	2.5	2-	1.5-	1.5-	1.5	1.5-	1.5	1.5	7	7
Snapdragon	La Bella Purple	GOLD	2.3	3	3-	3	3	3	3.5	2.5	2.5	2.5	2.5	2-	1-	1-	1.5-	1.5-	1.5	1.5	9	12
Snapdragon	La Bella Bronze	GOLD	2.3		3-	3-	2.5-	3	3	3	2.5	2.5	2	2	2	1.5	1.5	1.5-	1.5-	1.5-	7	5
Snapdragon	Montego Mix	NOV	2.2	3	3	3	3	3	3.5	3.5	2	2.5	2.5	2-	1-	1-	1-	1	1	1	6.5	11
Snapdragon	La Bella White	GOLD	2.1		3-	3-	2.5-	3	3	3	2	2	2-	1.5	1.5	1.5	1.5	1.5-	1.5	1.5	8	5.5
Snapdragon	La Bella Lavender	GOLD	2.1	3	3-	3	3	3	3	3	2.5	2.5	2.5	1.5-	1-	1-	1-	1-	1-	1-	8.5	7
Snapdragon	La Bella Light Pink	GOLD	2.1		3-	3-	2.5-	3	3	3	3	2.5	2.5	1.5	1-	1-	1-	1-	1	1	6.5	7.5

Week	23	24	25	26	27	28	29	30	31	32	33	34	35	36	37	38	39
Date	6/3	6/10	6/17	6/24	7/1	7/8	7/15	7/22	7/29	8/5	8/12	8/19	8/26	9/2	9/9	9/16	9/23

Species	Cultivar	Source	Seasonal Average	Weekly ratings (week of the year) "-" indicates no flowering																Height	Diameter	
				23	24	25	26	27	28	29	30	31	32	33	34	35	36	37	38			39
Snapdragon	Royal Carpet Mix	AT	1.9	3	3	3-	3	3.5	3.5	2.5	2.5	2.5	2.5	1-	.5-	.5-	.5-	.5-	.5	.5-	6.5	13
Snapdragon	Red Chimes	GOLD	1.9	3-	3-	3	3	3	3	2.5	2	2	2	1.5-	.5-	.5-	.5-	.5	1	1	4.5	6
Snapdragon	La Bella Rose	GOLD	1.7		3-	3-	2.5-	2.5	3	3	2.5	2.5	2.5	1.5-	1-	0	0	0	0	0	7	5.5
Snapdragon	La Bella Mix	GOLD	1.6		3-	3-	2.5	3	3	2	2	2	2	.5-	.5-	.5-	.5-	.5	.5	.5	9	5
Snapdragon	Bronze Chimes	GOLD	1.6	3-	3-	3-	2.5	2.5	3	3	2.5	2.5	1.5	1	0	0	0	0	0	0	4	6
Snapdragon	Chimes Mix	GOLD	1.6	3-	3-	3-	3	3	3	2	2	2	1.5	1-	.5-	0	0	0	0	0	5	9.8
Snapdragon	Liberty Mix	GOLD	1.5		3-	3-	3-	3-	3	2	2	2	1.5-	.5-	.5-	0	0	0	0	0	9	4
Snapdragon	Purple & White Chimes	GOLD	1.4	3-	3-	2.5-	2	2	2-	1.5-	1.5-	1.5	1.5	1	.5	.5	.5	.5	.5	.5	4	4.5
Snapdragon	Bells Mix	GOLD	1.1	3-	3	3	3	3	3	0	0	0	0	0	0	0	0	0	0	0		
Snapdragon	La Bella Yellow	GOLD	1.0	3-	3-	3-	2	2	2	1.5	0	0	0	0	0	0	0	0	0	0		
Statice	Premium Carmine	GRS	1.9	3-	3-	3-	2.5-	1-	1-	1-	1-	1-	1-	1-	2	3	2.5	2	2	2	6	12.5
Sunflower	96F10	AAS	1.9	3-	3.5	3.5	4	3.5	3.5	3	2	1.5	1	2-	1-	.5-	0	0	0	0	33	24.5
Sweet Potato	Pink Frost	BWN	4.0	3.5-	3.5-	3.5-	3.5-	4-	3.5-	3.5-	4-	4-	4-	4.5-	4.5-	4.5-	4.5-	4.5-	4.5-	4.5-	13	24
Sweet Potato	Blackie	BWN	3.9	3-	3.5-	3.5-	4-	4-	4-	4-	4-	4-	4-	4	4	4	4	4	4	4	17	24
Sweet Potato	99	NCSU	3.8	3.5-	3.5-	3.5-	3.5-	3.5-	4-	4-	4.5-	4-	4-	3	4	4	4	4	4-	4-	25	24
Sweet Potato	Sulfur	BWN	3.8	3.5-	3.5-	3.5-	3-	3.5-	4-	4-	4-	4-	4-	3-	3.5-	3.5-	4-	4-	4.5-	4.5-	19	24
Sweet Potato	Variigated	NCSU	3.4	3.5-	3.5-	3.5-	3-	3.5-	3.5-	3.5-	3.5-	3.5-	3.5-	3-	3.5-	3.5-	3.5-	3.5-	3.5-	3.5-	15	24
Torenia	Blue	BCG	3.5	3	3.5	3.5	3.5	3.5	4	4-	4.5	4.5	4.5	3.5-	3.5	3	3	3	2.5	2.5	13	24
Trachelium	Passion In Violet	DHN	2.3	3-	3-	3-	3-	3-	3	3	3	3	3	2-	2	1	1	1	1	.5	9.5	11
Verbascum	Southern Charm	BALL	2.5	3-	3-	3-	3-	3-	3	3	2.5	2.5	2.5	2	2	2.5	2	2	2	1.5-	9.5	14
Verbena	Tapien Soft Pink	BCG	4.2	3	3	3.5	3.5	4	4	4	4	4	4.5	5	5	5	5	5	4.5	4.5	5	24
Verbena	Quartz Scarlet	PA	3.8	3	3.5	3.5	3.5	3.5	4	4.5	4.5	4.5	4.5	3.5	3.5	3.5	4	4	3.5	3	10	23
Verbena	Temari Violet	BCG	3.7	3.5	3.5	3.5	3.5	3.5	4	4	4	4	4	4.5	4	3.5	3.5	3.5	3.5	3.5	5.5	24
Verbena	Tapien Blue Violet	BCG	3.7	3.5	3.5	3.5	3.5	3.5	3.5	3.5	3.5	4	4	4.5	4.5	4.5	3.5	3	3	3.5	4	24
Verbena	Polaris	BEN	3.6	3	3	3.5	3.5	3.5	4	4.5	4	4	4	4	4	3	3.5	3.5	3.5	3.5	13	24
Verbena	Tapien Lavender	BCG	3.6	3.5	3.5	3.5	3	3	3.5	3.5	3.5	4	4	4.5	4.5	3.5	3.5	3.5	3.5	3.5	6.5	24
Verbena	Temari Red	HWN	3.5	3.5	3.5	3.5	4	4	4	4	4	4	4	3.5	3	2.5	3	3	3	3	6	24

Week	23	24	25	26	27	28	29	30	31	32	33	34	35	36	37	38	39
Date	6/3	6/10	6/17	6/24	7/1	7/8	7/15	7/22	7/29	8/5	8/12	8/19	8/26	9/2	9/9	9/16	9/23

Species	Cultivar	Source	Seasonal Average	Weekly ratings (week of the year) "-" indicates no flowering																	Height	Diameter
				23	24	25	26	27	28	29	30	31	32	33	34	35	36	37	38	39		
Verbena	Tapien Powder Blue	BCG	3.3	3.5	3.5	3.5	3	3	3.5	3.5	3.5	3.5	3.5	3.5	3	3	3	3	3	3	3	24
Verbena	Quartz Burgundy	PA	3.0	3	3	3	3.5	3.5	3.5	3.5	3.5	3.5	3.5	3	2.5	3	3	2.5	2	2	11	22
Verbena	Heirloom Mango	NOV	3.0	3	3	3	3	3	3.5	3.5	3.5	3.5	3.5	3	2-	2.5	3	2.5	2.5	2.5	8	23
Verbena	Novalis Deep Blue w /Eye	AAS	2.9	3	3	3.5	3.5	3.5	3.5	3.5	3	3.5	3.5	2-	2-	2	2.5	2.5	2.5	2	11	22
Verbena	Quartz White	PA	2.8	3	3	3	3	3	3	2.5	2.5	2.5	2.5	3	3	3	3	3	2.5	2.5	8	19.5
Verbena	98BP07	AAS	2.7	3	3	3	3	3	3	3	3	3	3	3	2.5-	2-	2.5-	2.5-	2	2	8.5	16
Verbena	Quartz Mix	PA	2.7	3	3.5	3.5	3.5	3.5	3.5	3.5	3	3.5	3.5	2.5	2-	2-	2-	1.5-	1.5	1	7.5	24
Verbena	Romance Apricot	NOV	2.6	3-	3	3	3	3	3.5	3.5	3	3	3	3	2	2	2	1.5	1.5	1.5	7	22
Verbena	Quartz Rose	PA	2.6	3-	3-	3	3	3	3	3	3	3	3	3	3	2	2	1.5	1.5	1.5	10.5	14
Verbena	Heirloom Light Blue	NOV	2.6	3-	3-	3-	2.5	2.5	3	3.5	3	3.5	3.5	2	2	2	2	2	1.5	1.5	7.5	20
Verbena	Romance Purple	NOV	2.5	3-	3-	3-	3	3	3	3	3	3	3	2.5	2	2-	2-	1.5-	1.5	1	7	19
Verbena	Quartz Blue	PA	2.5	3-	3-	3-	3	3	3	3	2.5	2.5	2.5	2	2	2	2	2	2-	2-	7.5	15
Verbena	Obsession Mix	NOV	2.4	3	3	3.5	3	3	3	3	3	3	2.5	2	2	2-	2-	1.5-	1	1	7	21
Verbena	Romance Scarlet	NOV	2.4	3-	3	3	3	3	3	3	3	3	3	2	2	2	1.5	1.5	1	.5	7	16
Verbena	Quartz Polka Dot Mix	PA	2.4	3-	3-	3-	3	3	3	3	2.5	2.5	2.5	2	2	2-	2-	1.5-	1.5	1	7	18
Verbena	Romance Pastel Mix	NOV	2.3	3	3	3	3	3	3.5	3	3	3	3	2	2-	1.5-	1.5-	1-	.5-	.5	6.5	20.5
Vinca	Raspberry Red Cooler	PA	3.7	3-	3-	3-	3	3	3	3.5	3.5	4	4	4	4.5	4.5	4.5	4.5	4	4	17	22
Vinca	Pacifica Red	AAS	3.7	3-	3-	3	3	2.5	2.5	3.5	4	4	4	4	4	4	4.5	4.5	4.5	4.5	13.5	17
Vinca	Rose Cooler	PA	3.6	3-	3-	3-	3	3	3	3.5	4	4	4	4	4.5	4.5	4.5	4	3.5	3.5	16	24
Vinca	Stardust Orchid	PA	3.1	3-	3-	2.5-	2.5	2.5	2.5	3	3.5	3.5	3.5	3.5	3.5	3.5	3.5	3.5	3	3	12	18
Vinca	Cascade Appleblossom	BALL	3.0	3-	3-	2.5-	2.5	2.5	3	3	3.5	3.5	3.5	3.5	3.5	3	3	3	2.5	2.5	9.5	21
Vinca	Terrace Vermilion	AAS	2.9	3-	3-	3-	2.5	2.5	2.5	2.5	3	3	3	3	3.5	3	3	3	2.5	2.5	14	15
Vinca	Icy Pink Cooler	BALL	2.6	3-	3-	3-	2	2.5	2.5	3	3	3	2.5	3.5	3.5	3	2	1.5	1.5	2	10.5	18
Vinca	Pink Stardust	BALL	2.6	3-	3-	2-	2	2	2	1.5	1.5	1.5	3.5	3.5	3.5	3.5	3.5	3.5	3	3	7.5	10
Zinnia	Profusion Orange	SAK	3.8	3	3	3.5	3.5	4	4.5	4.5	5	5	5	5	4	4	3.5	2.5	2.5	2	16.5	24
Zinnia	Profusion Cherry	SAK	3.1	3	3	3	3.5	3.5	4	4.5	4.5	4.5	4.5	4.5	2.5	2.5	2	1.5	1.5	1	17.5	21
Zinnia	Oklahoma Mix	BEN	2.8	3	3	3	3	3	3.5	4	4	4	4	3	2.5	2	1.5	1.5	1.5	1.5	21	24

Week	23	24	25	26	27	28	29	30	31	32	33	34	35	36	37	38	39
Date	6/3	6/10	6/17	6/24	7/1	7/8	7/15	7/22	7/29	8/5	8/12	8/19	8/26	9/2	9/9	9/16	9/23

Species	Cultivar	Source	Seasonal Average	Weekly ratings (week of the year) "-" indicates no flowering																	Height	Diameter
				23	24	25	26	27	28	29	30	31	32	33	34	35	36	37	38	39		
Zinnia	Oklahoma Scarlet	BEN	2.8	3	3	3	3.5	3.5	3.5	4	3.5	3.5	3.5	3.5	2	2	1.5	1.5	1.5	1	29	24
Zinnia	Scarlet Flame	BEN	2.7	3	3	3	3.5	3.5	3.5	4	3.5	3.5	3.5	3	2	2	1.5	1.5	1.5	1	27	24
Zinnia	Dreamland Mix	AT	2.6	3	3	3	3.5	3.5	3.5	3.5	3	3	3	3	2	2	1.5	1.5	1.5	1	25	24
Zinnia	Blue Point Mix	BEN	2.3	3	3	3	3	3	3	3	2.5	2.5	2.5	2.5	1.5	1.5	1.5	1.5	1.5	1	30.5	20

Week	23	24	25	26	27	28	29	30	31	32	33	34	35	36	37	38	39
Date	6/3	6/10	6/17	6/24	7/1	7/8	7/15	7/22	7/29	8/5	8/12	8/19	8/26	9/2	9/9	9/16	9/23