

Epiphytes of The BELIZE Zoo & Tropical Education Center 1

Bruce K. Holst¹, David Amaya, Ella Baron, Pascual Garcia, Marvin Paredes² & Elizabeth Mallory³

¹Marie Selby Botanical Gardens, ²Ian Anderson's Caves Branch Botanical Garden, ³The Belize Zoo and Tropical Education Center

© Marie Selby Botanical Gardens (bholst@selby.org), Ian Anderson's Caves Branch Botanical Garden (ellabaron2014@gmail.com). Photos by D. Amaya (DA), E. Baron (EB), S. Chambers (SC), B. Holst (BH), E. Mallory (EM), P. Nelson (PN), M. Paredes (MP), S. Robinson (SR). Support from Marie Selby Botanical Gardens, Ian Anderson's Caves Branch Jungle Lodge.

[fieldguides.fieldmuseum.org]

[1146] version 1 5/2019

Flower and seed-bearing Plants



Philodendron radiatum
(Araceae; EB)



Philodendron radiatum
(Araceae; BH)



Syngonium podophyllum
(Araceae; EM)



Syngonium podophyllum
(Araceae; BH)



Aechmea bracteata
(Bromeliaceae; BH)



Aechmea bracteata
(Bromeliaceae; EB)



Aechmea bromeliifolia
(Bromeliaceae; MP)



Aechmea bromeliifolia
(Bromeliaceae; PN)



Aechmea tillandsioides
(Bromeliaceae; EM)



Aechmea tillandsioides
(Bromeliaceae; EB)



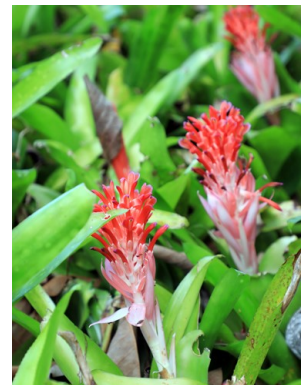
Androlepis skinneri
(Bromeliaceae; EB)



Androlepis skinneri
(Bromeliaceae; EB)



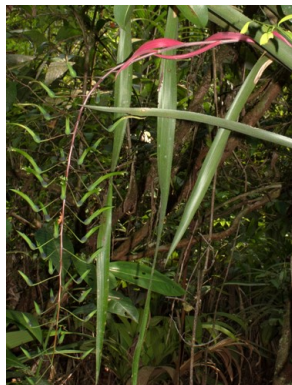
Billbergia pyramidalis
(cultivated Bromeliaceae; DA)



Billbergia pyramidalis
(cultivated Bromeliaceae; SR)



Billbergia viridiflora
(Bromeliaceae; EB)



Billbergia viridiflora
(Bromeliaceae; EB)



Catopsis berteroniana
(Bromeliaceae; EM)



Catopsis berteroniana
(Bromeliaceae; EB)



Catopsis floribunda
(Bromeliaceae; BH)

Epiphytes of The Belize Zoo and Tropical Education Center

Bruce K. Holst, David Amaya, Ella Baron, Pascual Garcia, Marvin Paredes & Elizabeth Mallory

[fieldguides.fieldmuseum.org]

[1146] version 1 5/2019



Catopsis floribunda
(Bromeliaceae; EB)



Guzmania lingulata
(Bromeliaceae; DA)



Guzmania lingulata
(Bromeliaceae; EB)



Lemeltonia monadelpha
(Bromeliaceae; EB)



Lemeltonia monadelpha
(Bromeliaceae; EB)



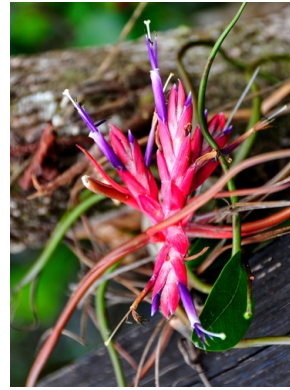
Tillandsia balbisiana
(Bromeliaceae; EB)



Tillandsia balbisiana
(Bromeliaceae; PN)



Tillandsia bulbosa
(Bromeliaceae; BH)



Tillandsia bulbosa
(Bromeliaceae; EM)



Tillandsia dasytiritifolia
(Bromeliaceae; BH)



Tillandsia dasytiritifolia
(Bromeliaceae; PN)



Tillandsia fasciculata
(Bromeliaceae; EM)



Tillandsia fasciculata
(Bromeliaceae; EB)



Tillandsia festucoides
(Bromeliaceae; BH)



Tillandsia festucoides
(Bromeliaceae; EB)



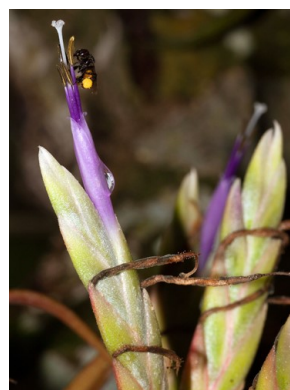
Tillandsia juncea
(Bromeliaceae; DA)



Tillandsia juncea
(Bromeliaceae; EB)



Tillandsia streptophylla
(Bromeliaceae; EM)



Tillandsia streptophylla
(Bromeliaceae; EB)



Tillandsia utriculata
(Bromeliaceae; EB)

Epiphytes of The Belize Zoo and Tropical Education Center

Bruce K. Holst, David Amaya, Ella Baron, Pascual Garcia, Marvin Paredes & Elizabeth Mallory

[fieldguides.fieldmuseum.org]

[1146] version 1 5/2019



Tillandsia utriculata
(Bromeliaceae; EB)



Tillandsia variabilis
(Bromeliaceae; EB)



Tillandsia variabilis
(Bromeliaceae; EB)



Werauhia gladioliflora
(Bromeliaceae; EB)



Werauhia gladioliflora
(Bromeliaceae; EB)



Selenicereus testudo
(Cactaceae; EB)



Selenicereus testudo
(Cactaceae; EB)



Campylocentrum fasciola
(Orchidaceae; DA)



Campylocentrum fasciola
(Orchidaceae; MP)



Catasetum integerrimum
(Orchidaceae; EB)

Female flowers



Male flower

Catasetum integerrimum
(Orchidaceae; EB)



Christensonella uncata
(Orchidaceae; WC)



Christensonella uncata
(Orchidaceae; EB)



Cohniella ascendens
(Orchidaceae; BH)



Cohniella ascendens
(Orchidaceae; DA)



Encyclia bractescens
(Orchidaceae; EB)



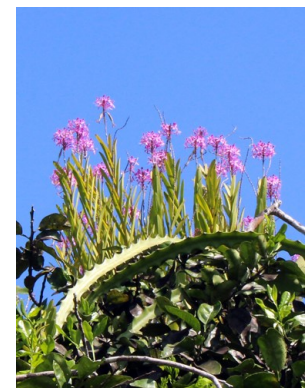
Encyclia bractescens
(Orchidaceae; EB)



Epidendrum cardiophorum
(Orchidaceae; EB)



Epidendrum cardiophorum
(Orchidaceae; WC)



Epidendrum flexuosum
(Orchidaceae; SC)

Epiphytes of The Belize Zoo and Tropical Education Center

4

Bruce K. Holst, David Amaya, Ella Baron, Pascual Garcia, Marvin Paredes & Elizabeth Mallory

[fieldguides.fieldmuseum.org]

[1146] version 1 5/2019



Epidendrum flexuosum
(Orchidaceae; MP)



Epidendrum nocturnum
(Orchidaceae; EB)



Epidendrum nocturnum
(Orchidaceae; EB)



Galeandra arundinis
(Orchidaceae; EB)



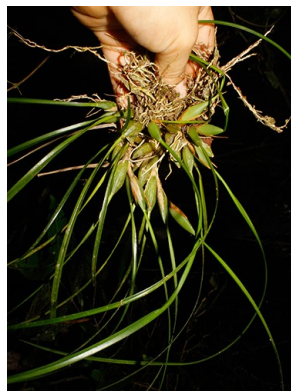
Galeandra arundinis
(Orchidaceae; MP)



Ionopsis utricularioides
(Orchidaceae; BH)



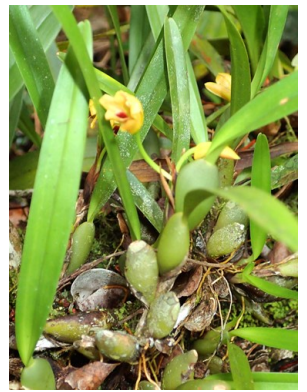
Ionopsis utricularioides
(Orchidaceae; EB)



Maxillariella tenuifolia
(Orchidaceae; DA)



Maxillariella tenuifolia
(Orchidaceae; EB)



Maxillariella variabilis
(Orchidaceae; EB)



Maxillariella variabilis
(Orchidaceae; MP)



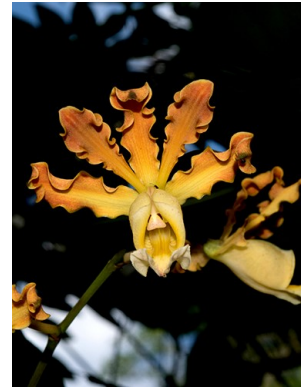
Mormolyca ringens
(Orchidaceae; BH)



Mormolyca ringens
(Orchidaceae; EB)



Myrmecophila christinae
(Orchidaceae; EM)



Myrmecophila christinae
(Orchidaceae; EB)



Notylia barkeri
(Orchidaceae; EB)



Notylia barkeri
(Orchidaceae; BH)



Ornithocephalus inflexus
(Orchidaceae; EB)



Ornithocephalus inflexus
(Orchidaceae; EB)



Polystachya caracasana
(Orchidaceae; MP)

Epiphytes of The Belize Zoo and Tropical Education Center

Bruce K. Holst, David Amaya, Ella Baron, Pascual Garcia, Marvin Paredes & Elizabeth Mallory

[fieldguides.fieldmuseum.org]

[1146] version 1 5/2019



Polystachya caracasana
(Orchidaceae; EB)



Prosthechea cochleata
(Orchidaceae; EB)



Prosthechea cochleata
(Orchidaceae; EB)



Scaphyglottis leucantha
(Orchidaceae; DA)



Scaphyglottis leucantha
(Orchidaceae; EB)



Sobralia sp.
(Orchidaceae; EM)



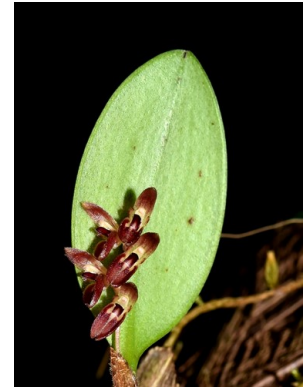
Specklinia grobyi
(Orchidaceae; EB)



Specklinia grobyi
(Orchidaceae; EB)



Trichosalpinx blaisdellii
(Orchidaceae; EB)



Trichosalpinx blaisdellii
(Orchidaceae; EB)



Trigonidium egertonianum
(Orchidaceae; EB)



Trigonidium egertonianum
(Orchidaceae; EB)



Vanilla sp.
(Orchidaceae; EM)



Peperomia obtusifolia
(Piperaceae; BH)



Peperomia obtusifolia
(Piperaceae; EB)



Peperomia portobellensis
(Piperaceae; MP)



Peperomia portobellensis
(Piperaceae; EB)

Spore-bearing Plants



Campyloneurum phyllitidis
(Polypodiaceae; EM)



Campyloneurum phyllitidis
(Polypodiaceae; EM)

Epiphytes of The Belize Zoo and Tropical Education Center

Bruce K. Holst, David Amaya, Ella Baron, Pascual Garcia, Marvin Paredes & Elizabeth Mallory

[fieldguides.fieldmuseum.org]

[1146] version 1 5/2019



Cochlidium linearifolium
(Polypodiaceae; BH)



Cochlidium linearifolium
(Polypodiaceae; BH)



Microgramma nitida (sterile leaves)
(Polypodiaceae; EM)



Microgramma nitida (fertile leaves)
(Polypodiaceae; EM)



Phlebodium decumanum
(Polypodiaceae; BH)



Phlebodium decumanum
(Polypodiaceae; BH)



Pleopeltis polypodioides
(Polypodiaceae; EM)



Pleopeltis polypodioides
(Polypodiaceae; EM)



Serpocaulon triseriale
(Polypodiaceae; EM)



Serpocaulon triseriale
(Polypodiaceae; EM)

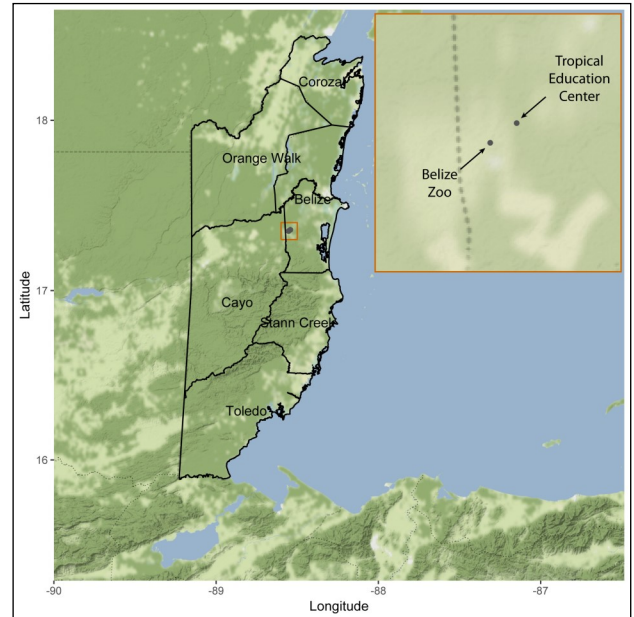


Vittaria sp.
(Pteridaceae; MP)



Vittaria sp.
(Pteridaceae; DA)

Located in central-eastern Belize, the District of Belize is home to a unique combination of ecosystems including short grass savanna, lowland broad leaf, pine and swamp forests, marine salt marsh, and extensive mangrove forests along the coast. Major rivers that drain the region are the Belize River and Sibun River.



A good place to view a few of the more upland habitats and plants is The Belize Zoo and Tropical Education Center, which is located at Mile 29 along the George Price Highway.

The Belize Zoo was established in 1983 and the Tropical Education Center (TEC) was established across from The Belize Zoo in 1994. The Belize Zoo-TEC covers 84 acres of savanna, broadleaf forest, and pine woodland.

The Belize Zoo-TEC and adjoining undeveloped lands are key areas that link the Central Belize Corridor, providing safe passage for wild animals across the country. The TEC features trails to observe a variety of habitats and plants that are well marked with tags providing scientific and common names. The Belize Zoo-TEC works to bring conservation awareness to the public, promote environmental education and scientific research, and provide excellent overnight facilities for student groups, individuals, and researchers.

The Belize Zoo is open to the public every day from 8:30 am to 5:00 pm (except on certain holidays). For more information on visiting or staying at the Tropical Education Center, contact tecreervations@belizezoo.org or call +501-625-8330.

Support for this project was kindly provided by the Belize Zoo/TEC. We especially acknowledge Jamal Andrewin and Sharon Matola for their assistance.