

Utah Forest Facts

UtahStateUniversity
COOPERATIVE EXTENSION

Urban/Community Forestry

NR/FF/015 (pr)

Conifers for Utah

Mike Kuhns, Extension Forestry Specialist

This fact sheet lists conifers that can be grown in Utah, including all native and most introduced conifers, and some suggested cultivars.

Introduction

Conifers are some of the most important ornamental plants grown in Utah landscapes. The same species of conifers tend to be planted over and over, but many more are available that have been proven to do well. Take advantage of the diverse selection of available conifers to increase the beauty and health of our landscapes.

This fact sheet provides a fairly complete list of conifer trees and shrubs that can be grown in Utah, as well as all native conifers. Species that are strictly shrubs (never trees) are noted. All have been found growing in Utah and most do well somewhere in Utah. Many are rare (shown by +) and may not be totally proven, some are hard to obtain commercially, and many need very particular conditions to do well. Some are much more desirable than others.



Incense-cedar

This list is arranged alphabetically by family and Latin name. Some example cultivars (cvs.) are listed, but more may exist. Learn about species and know your site for successful selection and planting. Utah natives are indicated by (*). USDA hardiness zones and general comments also are provided.

For more information on Utah trees refer to “Trees of Utah and the Intermountain West” by Kuhns, the Utah Tree Browser at treebrowser.org and USU’s Extension forestry website at forestry.usu.edu. For information on arboreta and tree identification go to the last page of this fact sheet: <http://goo.gl/WN5DR>.

Family Araucariaceae
+**monkey puzzle** (*Araucaria araucana*) – risky, but one has been growing for several years at USU; zones 7(6?)-11.

Family Cupressaceae
incense-cedar (*Calocedrus decurrens*) – many in the Salt Lake area; excellent large tree, but small cultivars exist; crown is narrow for its height; cvs. 'Aureovariegata', 'Compacta'; zones 5-9.

+Port Orford cedar or **Lawson cypress** (*Chamaecyparis lawsoniana*) – well-established specimens at UofU; genus *Chamaecyparis* prefers moist sites; many cvs. including 'Golden King', 'Silberstar'; zones 5-7(8?).



Port Orford cedar



Nootka falsecypress

+Hinoki falsecypress (*Chamaecyparis obtusa*) – 'Gracilis' doing well at UofU; dwarf forms are especially nice; cvs. 'Crippsii', 'Gracilis', 'Nana', 'Nana Gracilis', 'Nana Lutea', 'Tetragona Aurea'; zones 5-8.



Hinoki falsecypress
'Gracilis'



Sawara falsecypress
'King's Gold'

+Sawara or Japanese falsecypress (*Chamaecyparis pisifera*) – can be large or small; cvs. 'Filifera', 'Filifera Aurea', 'King's Gold', 'Plumosa', 'Squarrosa'; zones 4-8.

Leyland cypress



Leyland cypress

Arizona cypress (*Cupressus arizonica*) – good blue color; heat and drought tolerant; doing well in Logan, Utah; cvs. 'Blue Ice', 'Blue Pyramid', 'Glauca', 'Silver Smoke'; zones 7(5?)-9.



Arizona cypress

Italian cypress



Italian cypress 'Stricta'

(*Cupressus sempervirens*) – classic narrow cypress planted in SW Utah (also surviving in Moab); cvs. 'Glauca', 'Roylei', 'Stricta', 'Swane's Golden'; zones 7-9.

Chinese juniper

(*Juniperus chinensis*) – many highly variable cvs. including 'Aurea', 'Columnaris Glauca', 'Hetzii', 'Pfitzeriana', 'Stricta'; zones 3-7.



Common juniper 'Repanda'

***common juniper** (*Juniperus communis*) – native shrub; tough like all junipers; cvs. 'Compressa', 'Effusa', 'Repanda', 'Sentinel', 'Silver Mile'; zones 2-7.

(*Cupressocyparis x leylandii*) – hybrids of *Cupressus macrocarpa* and *Chamaecyparis nootkatensis*; fast growing; several at the UofU; cvs. 'Castlewellan', 'Golconda', 'Naylor's Blue', 'Robinson's Gold', 'Silver Dust'; zones 6(5?)-10.

horizontal juniper (*Juniperus horizontalis*) – prostrate shrub; many cvs. including 'Blue Chip', 'Blue Mat'; zones 2-7(?).

***one-seed juniper** (*Juniperus monosperma*) – native shrub not usually used in landscapes; zones 2-7(?).

***Utah juniper** (*Juniperus osteosperma*) – coarse textured tree; zones 3-7.

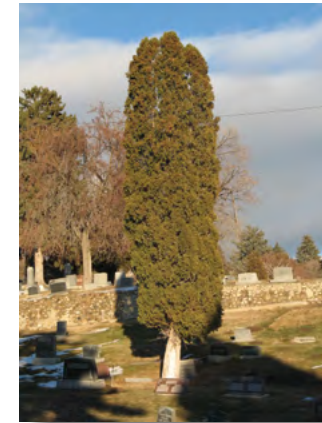


Rocky Mountain juniper
'Gray Gleam'

***Rocky Mountain juniper** (*Juniperus scopulorum*) – tough native shrub or tree; very common; blue foliage; many cvs. including 'Gray Gleam', 'Sky Rocket', 'Table Top Blue'; zones 3-7.

eastern redcedar (*Juniperus virginiana*) – very similar to Rocky Mountain juniper but less blue; many cvs. including 'Canaertii', 'Cupressiformis', 'Emerald Sentinel', 'Grey Owl', 'Spartan'; zones 2-9.

northern whitecedar (*Thuja occidentalis*) – very common tree or shrub; cold hardy; deer damage common; cvs. 'Douglasi Aurea', 'Emerald', 'Globosa', 'Nigra', 'Pendula', 'Techny'; zones 2-8.



Northern whitecedar

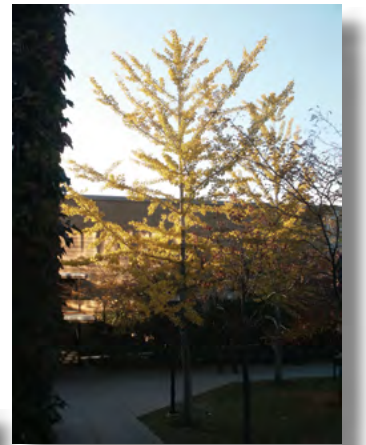


Oriental arborvitae

Oriental arborvitae (*Thuja orientalis*) – winter damage common; many cvs. including 'Aurea Nana', 'Blue Cone', 'Filifera'; zones 6-9.

+western redcedar (*Thuja plicata*) – worth trying more; many cvs. including 'Aurea', 'Gracilis', 'Hogan', 'Pumila', 'Zebrinus'; zones 5-7.

Family Ginkgoaceae
ginkgo (*Ginkgo biloba*) – very tough, beautiful tree; tolerant of urban conditions; plant male cvs.; many cvs. including 'Autumn Gold', 'Fastigiata', 'Pendula', 'Princeton Sentry', 'Santa Cruz'; zones 3-9.



Ginkgo

Family Pinaceae

***white fir** (*Abies concolor*) – toughest of the native true firs; long needles, blue color; cvs. 'Prostrata', 'Violacea', 'Wattezii', 'Wattezii Prostrata'; zones 3-7.



White fir

+grand fir (*Abies grandis*) – long-needles; from Northwest; growing at UofU; zones 6(5?)-7.

***subalpine fir** (*Abies lasiocarpa*) – narrow, spire-like crown; does poorly on warm, dry sites; zones 1-5.

+Spanish fir (*Abies pinsapo*) – very interesting appearance; blue color; growing in Murray arboretum; zones 7(6?)-10(?).



Spanish fir

Atlas cedar (*Cedrus atlantica*) – nice blue color; found all over Utah; cvs. 'Fastigiata', 'Glauca', 'Glauca Pendula'; zones 6(5?)-9.



Atlas cedar



Deodar cedar

Deodar cedar (*Cedrus deodara*) – large cones; large specimen at St. George LDS temple; cvs. 'Aurea', 'Aurea Nana', 'Aurea Pendula', 'Golden Horizon'; zones 6-9.



Cedar-of-Lebanon

+Cedar of Lebanon (*Cedrus libani*) – wonderful, stately tree; dark green foliage; doing well at Salt Lake City LDS Temple; cvs. 'Compte de Dijon', 'Pendula', var. *stenocoma*; zones 5-7(8?).

European larch (*Larix decidua*) – most commonly planted larch in Utah; deciduous; cvs. 'Fastigiata', 'Pendula'; zones 2-6.



European larch

+western larch (*Larix occidentalis*) – deciduous; growing at old Forest Service nursery site in Big Cottonwood Canyon; zones 4-6.

(*) Utah Native (+) Very Rare in Utah

Japanese larch (*Larix kaempferi*) – deciduous tree or shrub; many cvs. including 'Blue Rabbit', 'Nana', 'Pendula'; zones 4-7.



Japanese larch 'Nana'

Norway spruce (*Picea abies*) – highly variable and very ornamental; many cvs. including 'Argenteospica', 'Decumbens', 'Inversa', 'Nidiformis', 'Pendula', 'Reflexa', 'Repens'; zones 2-7.



Engelmann spruce

***Engelmann spruce** (*Picea engelmannii*) – our most common native spruce, but rarely planted; cvs. 'Argentea', 'Glauca'; zones 2-7(6?).



White spruce 'Densata'

white spruce (*Picea glauca*) – 'Densata' (called Blackhills spruce) may be more heat tolerant than some spruces; growing in Orem; cvs. 'Alberta Globe', 'Conica', 'Conica Laurin', 'Densata', 'Doumetii'; zones 2-6.



Black spruce 'Wellspire'

+black spruce (*Picea mariana*) – very uncommon; I have seen a young one doing well at the UofU; cvs. 'Doumetii', 'Ericoides', 'Golden', 'Nana', 'Wellspire'; zones 3-6.



Serbian spruce

+Serbian spruce (*Picea omorika*) – doing well in a group at Salt Lake City LDS Conference Center; cvs. 'Expansa', 'Nana', 'Pendula'; zones 4-7.



Blue spruce 'Iseli Fastigiata'

Oriental spruce (*Picea orientalis*) – cvs. 'Aurea', 'Gracilis', 'Nana', 'Nutans', 'Skylands', 'Wittbold'; zones 4-7.

***blue spruce** (*Picea pungens*) – common; cvs. 'Fastigiata', 'Hoopsii', 'Iseli Fastigiata', 'Iseli Foxtail', 'Kosten', 'Mesa Verde', 'Montgomery', 'Pendula'; zones 2-7(6?).



Blue spruce 'Mesa Verde'

+lacebark pine (*Pinus bungeana*) – beautiful bark; otherwise somewhat like Scotch pine; may be hard to find; cv. 'Compacta'; zones 4-8.



Lacebark pine

***lodgepole pine** (*Pinus contorta*) – native that is rarely planted; zones 2-6.

(*) Utah Native (+) Very Rare in Utah



Japanese red pine 'Umbraculifera'

Japanese red pine (*Pinus densiflora*) – nice tree with interesting dwarf forms; cvs. 'Aurea', 'Globosa', 'Oculus-draconis', 'Pendula', 'Pumila', 'Umbraculifera'; zones 3-7.

***pinyon** (*Pinus edulis*) – native; rarely planted; zones 4-8.



Afghan pine

Afghan pine (*Pinus eldarica*) – long-needled; heat tolerant; planted in SW Utah; zones 6-8.



Limber pine 'Vanderwolf's Pyramid'

***limber pine** (*Pinus flexilis*) – native; fine texture; cvs. 'Columnaris', 'Glauca', 'Glauca Pendula', 'Glenmore Dwarf', 'Pendula', 'Vanderwolf's Pyramid'; zones 4(3?)-7.

Aleppo pine (*Pinus halepensis*) – heat tolerant; found in SW Utah; zones 8-10.



Bosnian pine (*Pinus heldreichii*) – somewhat like Austrian pine; small one growing at Ogden Botanical Gardens; cvs. 'Compact Gem', 'Green Bun', var. *leucodermis*; zones 6(5?)-8.

Bosnian pine var. *leucodermis*



mugo pine (*Pinus mugo*) – common shrubby pine; cvs. 'Aurea', 'Mops', 'Sherwood Compact', 'Slow Mound'; zones 2-8.

Mugo pine 'Slow Mound'

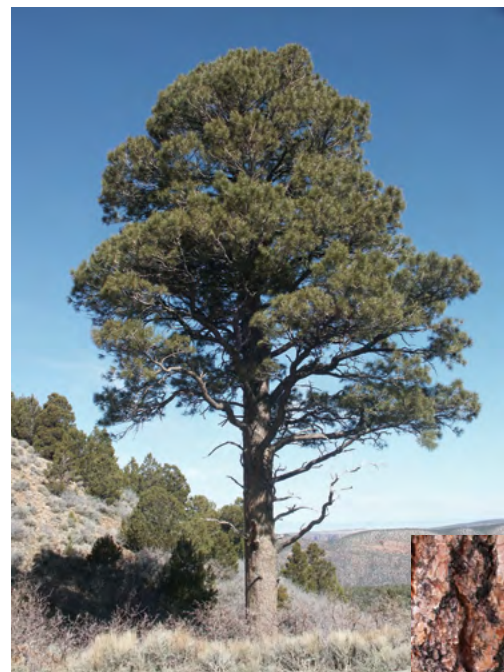
Austrian pine (*Pinus nigra*) – very common and tough; cvs. 'Aurea', var. *cebennensis*, 'Arnold Sentinel', 'Hornibrookiana'; zones 4-7.



Austrian pine

Japanese white pine (*Pinus parviflora*) – bluish color; cvs. 'Adcock's Dwarf', 'Bergman', 'Brevifolia', 'Glauca'; zones 4-7.

+Balkan or Macedonian pine (*Pinus peuce*) – white (5-needled) pine; rare; zones 4-7.



Ponderosa pine

***ponderosa pine** (*Pinus ponderosa*) – native large pine; commonly planted; long-needles; zones 3-7.



Southwestern white pine

+southwestern white pine (*Pinus strobiformis*) – often blue colored needles; one of the better white pines (5-needled) for Utah; cv. 'Loma Linda'; zones 5-9.

Scotch or Scots pine (*Pinus sylvestris*) – common; orange upper bark; often blue colored needles; many cvs. and varieties including 'Aurea', 'Beuvronensis', 'Fastigiata', 'Watereri'; zones 2-8.



Scotch pine



Japanese black pine

Japanese black pine (*Pinus thunbergiana*); good ornamental pine; doing well at the UofU; cvs. 'Compacta', 'Globosa', 'Iseli', 'Oculus-draconis', 'Thunderhead'; zones 5-9.



Himalayan pine

+Himalayan pine (*Pinus wallichiana*) – very long needles; cold hardy; doing well at the UofU; cv. 'Zebrina'; zones 5(4?)-7.

+golden-larch (*Pseudolarix amabilis* or *P. kaempferi*) – deciduous; cv. 'Annesleyana'; zones 5(4?)-7.

***Douglas-fir** (*Pseudotsuga menziesii*) – large native that is sometimes planted; cvs. 'Compacta', 'Fastigiata', 'Glauca', 'Pendula'; zones 4-6.



Douglas-fir 'Glauca'

Family Sciadopityaceae

+Japanese umbrella pine (*Sciadopitys verticillata*) – very rare; growing at USU for several years; cvs. 'Aurea', 'Green Star', 'Jim Cross', 'Pendula', 'Richie's Cushion'; zones 5-7.



Japanese umbrella pine

Family Taxaceae

English yew (*Taxus baccata*) – commonly planted shrubs; shade tolerant; cvs. 'Aurea', 'Fastigiata', 'Nana', 'Pygmaea', 'Repandens', 'Summergold'; zones 5(4?)-7.

Japanese yew (*Taxus cuspidata*) – common planted shrubs; shade tolerant; cvs. 'Aurescens', 'Capitata', 'Expansa', 'Nana', 'Pyramidalis'; zones 5(4?)-7.

Yew



Jeffrey pine (*Pinus jeffreyi*) – large pine similar to ponderosa pine; growing in Murray arboretum; zones 3-7.



Jeffrey pine

+Korean pine (*Pinus koraiensis*) – blue-green foliage; cvs. 'Glauca', 'Morris Blue', 'Silveray', 'Winton'; zones 3-7.



Bristlecone pine

***bristlecone pine** (*Pinus longaeva*) – native that is somewhat common in cultivated landscapes; very large one growing at the UofU; drought hardy; cv. 'Sherwood Compact' (actually *Pinus aristata*); zones 5(4?)-7.

***singleleaf pinyon** (*Pinus monophylla*) – native that is rarely planted; zones 5(4?)-9.



Singleleaf pinyon

+western white pine (*Pinus monticola*) – zones 5-7.

(*) Utah Native (+) Very Rare in Utah

(*) Utah Native (+) Very Rare in Utah

Family Taxodiaceae

+Cunninghamia or common Chinafir

(*Cunninghamia lanceolata*) – very rare; growing at USU for several years; cv. 'Glauca'; zones 6(5?)-9.



Cunninghamia

dawn redwood

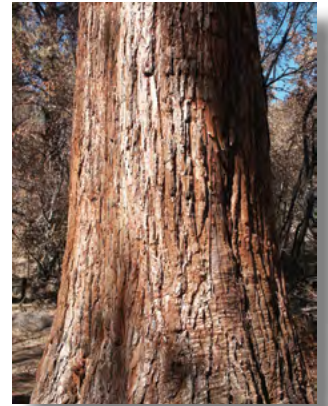
(*Metasequoia glyptostroboides*) – deciduous; nice fall color; similar in some ways to baldcypress; cvs. 'Emerald Feathers', 'National', 'Ogon', 'Rowena', 'Sheridan Spire'; zones 4-8.



Dawn redwood



Dawn redwood



Giant sequoia

giant sequoia (*Sequoiadendron giganteum*) – fairly common in Salt Lake valley, Ogden, & elsewhere; planted specimen in Pine Valley Mtns. is 110 feet tall; cv. 'Pendulum'; zones 6(5?)-8.

baldcypress (*Taxodium distichum*) – deciduous; swamp species, but does well elsewhere; on USU, UofU, and BYU campuses; cvs. 'Fastigiata', 'Pendens', 'Shawnee Brave'; zones 4-11.



Baldcypress

(*) Utah Native (+) Very Rare in Utah

Utah State University is committed to providing an environment free from harassment and other forms of illegal discrimination based on race, color, religion, sex, national origin, age (40 and older), disability, and veteran's status. USU's policy also prohibits discrimination on the basis of sexual orientation in employment and academic related practices and decisions. Utah State University employees and students cannot, because of race, color, religion, sex, national origin, age, disability, or veteran's status, refuse to hire; discharge; promote; demote; terminate; discriminate in compensation; or discriminate regarding terms, privileges, or conditions of employment, against any person otherwise qualified. Employees and students also cannot discriminate in the classroom, residence halls, or in on/ off campus, USU-sponsored events and activities. This publication is issued in furtherance of Cooperative Extension Work, Acts of May 8 and June 30, 1914, in cooperation with the U. S. Department of Agriculture, Noelle E. Cockett, Vice President for Extension and Agriculture, Utah State University. Published March 2007; updated June 2012.