

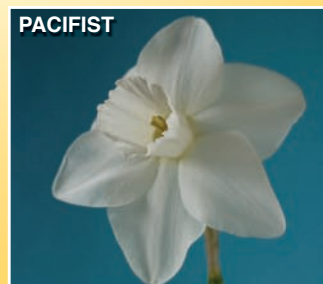
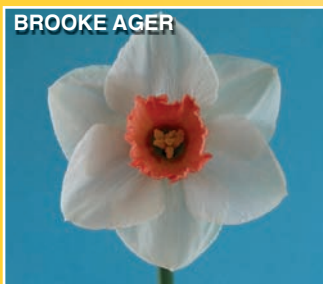
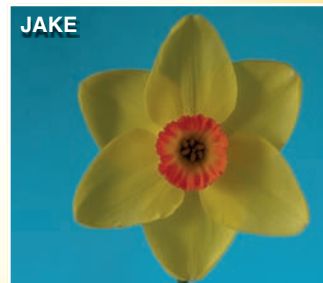
**PLEASANT  
VALLEY  
DAFFODILS  
LIMITED**



**Est 1977**

**2014**

**\$6-00**



# PLEASANT VALLEY DAFFODILS LIMITED

66 Brophy Road, R.D 21, Geraldine 7991

Phone: (03) 693 8081 E-mail address: [pvdaffodils@ihug.co.nz](mailto:pvdaffodils@ihug.co.nz)

[www.pleasantvalleydaffodils.co.nz](http://www.pleasantvalleydaffodils.co.nz)

Hello and welcome to our 2014 catalogue.

As you will have noticed, we have decided to continue with a printed catalogue for the near future at least. The catalogue is still our best form of advertising, and your feedback is proof of its popularity. It is humbling to hear that many of you still have every issue we have produced. If you have access to the internet, please take the time to browse through our website, as there are a lot more photos, and we hope to add more this year.

Once again the weather has dominated our year. Spring brought three devastating wind storms, that felled about 60 trees on our property, and damaged many more. Summer never arrived, with most days being cloudy and humid. Autumn has been the wettest we have experienced in our time here. We had 200mm of rain in April, and regular showers since have kept our clay soil totally sodden. Winter so far has been wet and mild, which has promoted a lot of early growth in the bulb patch. We now need some cold dry weather to slow things down a bit.

We are often asked about the "Narcissus Fly" or bulb fly as we call them. Basically if you grow daffodils, you will have bulb fly problems at some stage. I have heard of plenty of remedies, some successful & some not. In recent years we have used a spray called "Ripcord" which has had great results for us. Ripcord is an insecticide commonly used to kill house flies. We spray the foliage on our seedlings and miniature stocks every 10 - 14 days once we see the fly on the wing. Ripcord is available from most garden centres and hardware outlets.

We hope you enjoy our selection of new releases, which includes some proven show blooms, as well as some novelty garden varieties.

For those who have trouble finding us, we now have signs at Speechley's Bridge, on the Geraldine to Fairlie Highway. We are open to the public, 7 days a week from early September to Mid October. Visitors are welcome to stroll around over two hectares of blooms, or view them in our large indoor display.

We would like to thank all our regular customers for their continued support, and welcome to our new customers.

Thank you and Happy Gardening. Gordon and Cindy Coombes

---

## TERMS OF BUSINESS

Payment with order please: March delivery.

<b>Postage and Handling:</b>	<b>South Island</b>	<b>\$ 8.00</b>	<b>Prices are G.S.T. inclusive</b>
	<b>North Island</b>	<b>\$12.00</b>	
	<b>Rural Delivery (extra)</b>	<b>\$ 6.00</b>	

Orders on enclosed form please and we request them **before December 20th**. No acknowledgement, unless requested with **S.A.E.**

**PLEASE** list several alternatives if you wish us to substitute. Unless stated on the order form, we will substitute at our discretion, a flower(s) of similar quality and value

---

## DAFFODIL CULTURE

### PLEASE READ THIS

1. Please open package and bulb bags immediately. Store in a cool place until planted.
2. **Flower Colour:** At the time of flowering, climatic conditions and adaptive success to its new home may affect the colour intensity. In most areas pinks may open a yellow or greenish colour, the pink colour intensifies as the bloom matures. Reverse bi-colours frequently open all yellow, the cup turning white with bloom maturity. Many red cups develop colour and size also with maturity. It is important for customers ordering for the first time to be aware of the above information.
3. **Fertilizer:** Use with caution, especially organic and commercial fertilizers high in nitrogen. Applications of well-rotted compost are beneficial.
4. **Planting:** When weather cools, plant as soon as possible, generally March-April to establish a well developed root system before winter.
5. **How to Plant:** Choose a well-drained area, not in deep shade. Soil should be deeply worked prior to planting. Open a trench or hole to a depth of 6 to 8 inches, allowing for covering the bulbs with 4 to 6 inches of soil. Plant 6 to 8 inches apart, the latter is preferable when bulbs are left down for several years. Moisture is essential during the growing season, particularly before flowering. A mulch will keep down weeds, retain moisture and prevent blooms from being spattered with dirt during wet weather.

### PLEASE NOTE

All care is taken in the growing and handling of our bulbs, but due to soil and climatic conditions and factors beyond our control, we cannot accept responsibility for partial, or total crop failure. If the purchaser doesn't accept the bulbs sold on these terms, we request they be returned to us, within 7 days of receipt.

# DAFFODIL CLASSIFICATION

Daffodils are classified into 13. distinct divisions. This is largely determined by the length of the Petals (perianth) and the cup (corona). They are as follows.

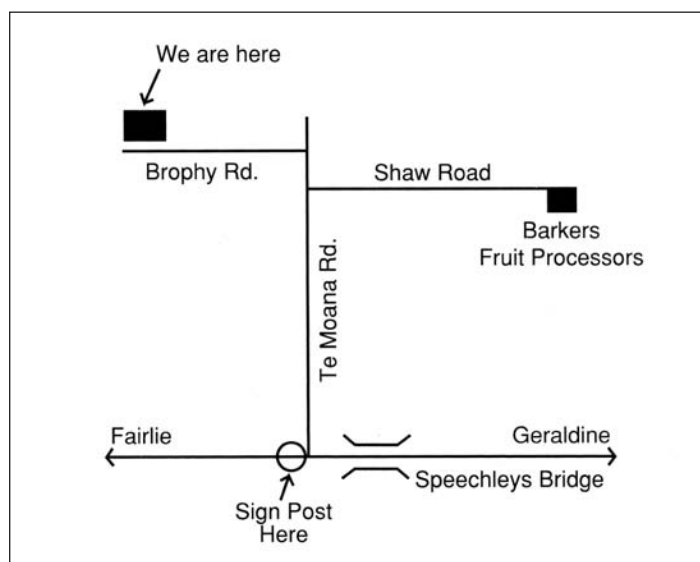
- Div: 1.** TRUMPET DAFFODILS. One flower to a stem. The trumpet is as long or longer than the length of the petals. This is normally obvious, but should be measured for show purposes.
- Div: 2.** LARGE CUP DAFFODILS. One flower to a stem. The cup is more than 1/3, but less than the length of the petals.
- Div: 3.** SMALL CUP DAFFODILS. One flower to a stem. The cup is not more than 1/3, the length of the petals.
- Div: 4.** DOUBLE DAFFODILS. One or more flowers to a stem, with doubling of the cup or petals or both. Double daffodils are similar in appearance to a rose or camellia flower.
- Div: 5.** TRIANDRUS DAFFODILS. Usually two or more pendent flowers to a stem. Petals reflexed. (swept backwards ).
- Div: 6.** CYCLAMINEUS DAFFODILS. One flower to a stem, petals reflexed ( swept backwards ).The flowers are at an acute angle to the stem, with a very short neck.
- Div: 7.** JONQUILLA DAFFODILS. One to five flowers per stem. Petals spreading or reflexed. The cup is funnel shaped or flared, and is usually wider than it is long. Flowers are usually fragrant.
- Div: 8.** TAZETTA DAFFODILS. Usually three to twenty flowers to a stout stem. Petals are spreading, but not reflexed. Flowers are usually fragrant.
- Div: 9.** POETICUS DAFFODILS. Commonly referred to as "Pheasants eye". One flower to a stem. Pure white petals, with a short, disc shaped cup. The cup usually has a green and / or yellow centre, with a red rim, although the cup can be one colour. Flowers are usually fragrant.
- Div: 10.** BULBICODIUM DAFFODILS. Commonly referred to as "Hooped petticoats". Usually one flower to a stem. Petals are very small and spikey and insignificant, compared to the dominant cup.
- Div: 11.** SPLIT CORONA DAFFODILS. This is a flower where the cup is split, for more than half it's length, and in most cases, will lie flat against the petals. There are many variations of these, and should not be confused with a large flat cup flower. The key being, the cup splits into separate segments.
- Div: 12.** OTHER DAFFODILS. These are flowers that will normally have characteristics of more than one of the above divisions. An example of this would be a multi-headed cyclamineus.
- Div: 13.** Daffodils distinguished solely by botanical name, or species.

## COLOUR CODES

Daffodils have colour codes to describe the petals and cup. The main colours are as follows.

White or whitish	<b>W</b>	Yellow	<b>Y</b>
Pink	<b>P</b>	Red	<b>R</b>
Orange	<b>O</b>	Green	<b>G</b>

When describing a flower, the first colour is the petals, and the next colour(s) are the cup. Example: A flower with white petals and a pink trumpet is a **Division 1 W-P**. A poeticus daffodil with white petals, a green eye, yellow cup with a red rim is a **Division 9 W-GYR**.



Flowers named but not yet registered are followed by a seedling number e.g. Apogee — (5-76)

**E** = Early   **M** = Mid Season   **L** = Late flowering

***Due to circumstances beyond  
our control colours in some  
photographs are not  
always a true representation.***

**PLEASE NOTE:** Bulbs listed in this year's catalogue are only a cross section of over 1300 named varieties we have in stock.

If you require something not listed, please ask as we may just have it.

# NEW INTRODUCTIONS

- AMAZING SKY** • 11 A W-YP • Crotty N.Z. M  
(Pink Sparkler x Chernobyl) Sdlg No 23 - 04 Registered 2013. "Amazing Sky" opens with a bright orange pink collar, that progresses to Mid Pink with a yellowish pink centre, backed by pure white perianth segments. More of a garden variety. It is unique for its various tones and colours, in its heavily ruffled collar. Hence its name. Strong stem and neck. Limited stock. **\$30.00**
- BALLISTIC** • 4 Y O • McLennan • N.Z. M  
(Kampo x Kiwi Sunset) Yet another lovely double from Johns collection. The neat smooth yellow petal segments, overlap and surround the strong orange frilled centre. The contrast between yellow and orange is eye catching. Ballistic is a regular winner on the show bench, as well as being a strong growing garden variety. Very limited stock. **\$30.00**
- BROOKE AGER** • 2 W.P • DuBose • U.S.A M  
(Pink Ice x Coral Light x My Word) Brooke Ager is a true intermediate flower, and is on the N D S approved list. The neat double triangle petals are pure white and well rounded. The bowl shaped cup, is light pink at the base, moving to deeper pink towards the ruffled rim. A worthy addition to your intermediate collection, and useful as a breeder of small flowers. Very limited stock. **\$50.00**
- CAMEO MARIE** • 3 W-YYO • Ramsay • N.Z. M  
(Collectors Choice x Challenge) Peter rated this flower as his best small cup to date, and show results around the country are proof of its consistency. The broad overlapping petals are pure white, and are complimented by a very neat cup, which is yellow at the base, with a bright orange ruffled rim. Top show quality. Limited stock. **\$25.00**
- FROSTY LADY** • 1 W-W • Crotty • N.Z. M  
(Valley Ice x Blanco Sol) Sdlg No 14-05 Registered 2001. Frosty Lady is a top quality show flower. It was premier bloom in its class at the South Island National Show at Dunedin in 2012. Extremely smooth white perianth segments, and a neat tapered pure white trumpet. Good stem and neck. We think Frosty Lady is the best white trumpet we have bred at Pleasant Valley to date. Limited stock. **\$70.00**
- GLEN DEVERON** • 9 W-GYR • Hamilton N.Z. • (44-03) L  
(Parentage Unknown) Grown at Pleasant Valley from seed. Hybridized by Max Hamilton. Selected by Colin Crotty, yet to be registered. Another top poet from this source. A small flower, it possesses a roundish ice white perianth that sets off the disc shaped corona, which has a deep green eye, and yellow centre, and a bright red outer edge. Limited stock. **\$15.00**
- GLENLIVET** • 9 W-GYR • Hamilton • N.Z 25-03 L  
(Parentage Unknown) Grown at Pleasant Valley from seed hybridized by Max Hamilton, selected by Colin Crotty, yet to be registered. Glenlivet differs from its siblings, in that it possesses, perianth segments that tend to reflex quite strongly, giving its flower its own uniqueness. The ice white perianth, is a nice background to the small disc shaped corona, which has a green eye, a yellow centre and a bright red outer band. Limited stock. **\$15.00**
- HOT SEAT** • 2 O-O • Crotty • N.Z. M  
(Fever Pitch x Valley Glow) Reg. 2011 Sdlg No 13-04 A medium sized flower, "Hot Seat" has a smooth yellow perianth, that is heavily flushed with red. It's neatly formed orange red corona, makes a well balanced show flower. Hot Seat has been placed in its class, at several South Island shows. Most flowers are showable. Limited stock. **\$30.00**
- JAKE** • 3 Y-GOO • Duncan • Ireland M - L  
(Garden News x Triple Crown) Jake is one of the best small cup flowers we grow, but unfortunately it flowers late for our main shows. The smooth deep yellow petals form a perfect double triangle, and are set off by a very round flat cup, with a green eye, moving to yellow with a strong orange - red rim. A very consistent flower for show or garden. Limited stock. **\$30.00**
- KAPITI KAURI** • 8 W Y • McLennan • N.Z. E  
(Parentage unknown) Kapiti Kauri is one of the first flowers to bloom for us in the early spring. This all yellow flower doesn't have the best of form, but consistently has three heads per stem, and grows on a long strong stem, making it ideal as a cut flower. **\$5.00**
- KATEA CHARM** • 9 W-GYR • Dreaver • N.Z. E - M  
(Parentage unknown) We have grown this lovely little flower for many years, under its seedling number I.D.3. Luckily Ron Abernethy has taken the time to register many of Isobels Poets, so we can now release Katea Charm for sale. The even rounded petals, are snow white, and form a perfect backdrop for the flat disc shaped cup, with its green eye, yellow centre, with a fine red rim. Ideal for early shows or the garden. Limited stock. **\$25.00**
- KOKOPELLI** • 7 WW • Spotts • U.S.A M  
(Sundial open pollinated) Kokopelli is a miniature flower, and is on the N.D.S approved list. The flowers are pale yellow in colour, and about 37 mm in diameter. There are generally 2 - 4 florets per stem, which sit nicely against each other. This lovely little flower is ideal for showing or to add to your miniature collection. Limited stock. **\$20.00**
- LE SOL** • 2 Y-OO • Crotty • N.Z. E  
(Sunchild x Egmont Charm x Rheban Red) Reg. 2013. One of the first to flower at Pleasant Valley. A large flower, with a tall strong stem. The yellow perianth is round and smooth. Its large expanded corona, has a yellow base, a centre of light orange yellow and a slightly deeper orange at the rim. A well balanced flower, which would be useful in collection classes. I think it also has a future as a cut flower. Limited stock. **\$25.00**
- MIDAS VALLEY** • 1 Y - Y • Crotty • N.Z. • (31-03) M  
(Midas Touch x Valley Lode) Not yet Registered. Midas Valley is a medium sized flower, of show quality. Its perianth segments are well overlapped and smooth. Bright yellow in colour, its long tapered trumpet is slightly expanded at the rim, and is a deeper yellow than the perianth. Midas Valley will be registered in the near future. It is definitely showable. Limited stock. **\$30.00**
- MILLENNIUM GOLD** • 1 Y Y • Reed • U.S.A M  
(Golden Jewel x Dream Prince) The deep yellow petals are well rounded, and are overlapping to form a perfect double triangle. The long funnel shaped trumpet is of the same colour, with a slight flare at its serrated rim. Exceptional flower of show quality. Very limited stock. **\$50.00**
- NORTY** • 4 Y-O • McLennan • N.Z. • J.F.M 93-30 E  
(Kazan x Golden Orbit) Not yet Registered. This variety was sent to us by John to trial a few years ago. Over the years, Norty has developed into a very good early show flower. Being early, we have used it at Timaru quiet often. It could be a little deeper in colour, but it is a very full and well formed flower. Light yellow petals, interspersed with light orange petaloids. All together a most pleasing double flower. **\$15.00**
- OHAKUNE** • 1 Y O • Hamilton • N.Z. M  
(Seedling x Seedling) Quality yellow and orange trumpets are rare, so this flower will be useful in your collection. The yellow petals are smooth and well rounded. The trumpet is orange, with a slight flare on its frilled rim. Limited stock. **\$25.00**
- ORYX** • 7 Y W • Mitsch M  
(Aircastle x N. Jonquilla) Oryx is a novelty garden flower, which has alot of appeal. The flowers are about 70 mm in diameter, and will have up to 3 florets per stem. When they open, they are a greenish yellow colour, and as they age they become almost white. Something different in your garden. **\$10.00**
- PACIFIST** • 2 W - W • Crotty • N.Z • 33-03 M  
(Valley Ice x Ashmore) Not yet Registered. Pacifist is a pure white flower, mainly a garden variety, but can be used for showing. Different in form from most varieties produced today. It is a much more open structured flower, with a strong stem and neck. Its white perianth tends to reflex, overall a very interesting flower. Limited stock. **\$10.00**
- SUNSET STRIP** • 11 • W-YP • Coombes • N.Z. M  
(Seedling x Seedling) G 7-03. The pure white petals are smooth and slightly pointed. The split cup is well rounded with a ruffled edge. On opening the cup is pale yellow, and as it ages it stays yellow in the centre, moving to a light pink, with a darker pink rim. A novelty flower for the garden. Limited stock. **\$15.00**
- THIN ICE** • 2 W Y • Coombes • N.Z. M  
(Blanco Sol x White Ermine) When first shown at the South Island National Show, in Dunedin 2005, Thin Ice was placed first in the 2 W - Y seedling class. The pure white petals are smooth, and slightly pointed, and form a neat double triangle. The long cylindrical cup is smooth and deep yellow in colour. The contrast between white and yellow is eye catching. A well balanced flower of show quality. Very limited stock. **\$40.00**
- TRUCULENT** • 3 W-WWY • Jackson • Aust E - M  
(Seedling x Seedling) Truculent is a very consistent show quality small cup flower. The petals are very white and well rounded. The bowl shaped cup has a green eye, moving to a white band with a golden yellow rim. Tall growing with a strong stem. One of our favourites. Limited stock. **\$20.00**
- UPPER HAND** • 3 Y-R • Crotty • N.Z. M  
(Garfield x Red Coat) Reg. 2012 Sdlg No 23-05 This is a medium sized flower, of good show quality. A roundish flower, its perianth is light yellow, and is very smooth in texture. The expanded corona is bright orange red. A useful flower for the future, as most are showable. **\$35.00**
- VALLEY JEWEL** • 1 Y-Y • Crotty • N.Z • 32-03 M  
(Midas Touch x Valley Lode) Not yet Registered. A sister seedling to Midas Valley. A smaller flower, a little larger than intermediates, but much to good not to be listed. A perfectly formed little trumpet, with a bright yellow colour. An odd one out at show time, but lovely in the garden. **\$25.00**
- WHITE SUEDE** • 2 W-W • Crotty • N.Z • 27-03 M  
(Chinchilla x River Queen) Not yet Registered. White suede grows very large. A variety that can be shown. It has a large overlapping perianth, and a large corona with a expanded mouth. Tall grower, with a strong neck. Popular with the public, unfortunately we only have a small stock of bulbs. **\$30.00**
- YOUTH CLUB** • 2 Y-O • Crotty • N.Z • 29-05 L - M  
(Feverpitch x 2 yr seedling) Not yet Registered. "Youth Club" flowers later in the season. A medium sized neat show flower. A round flower with a smooth mid yellow perianth. Its cup shaped corona, is bright orange, with a neatly ribbed edge. A nice flower. Limited stock. **\$25.00**

# GENERAL LIST

- ABRAXIS** • 8 W-O • (Hall) • N.Z. E-M  
(Grand Monarque x Voda ) Sdlg No G M X – 16 Reg 2005. The nicely formed white perianths, contrast with the deep orange – red coronas. Sweetly scented, 3 – 6 florets per stem. Was placed 1st in the open single blooms, at Dunedin 2005, and has many other successes on the show bench. Altogether a top show variety, with good sturdy stems. Limited stock. **\$10.00**
- ACTAEA** • 9 W-G WO • (Lubbe) • Hol E  
Solid snow white perianth, small yellow cup, edged fiery red. Vigorous. **\$6.00**
- ACTIVIST** • 11A Y-WY • (Crotty) • N.Z. • (11-99) M  
Possibly our best reverse coloured, split corona to date. The parentage is unknown, having been found in a batch of unknown open pollinated seedlings. A good sized flower, it opens a uniform deep lemon yellow all over, as it matures the split corona, reverses nicely to white, with a fine yellow rim. It is a useful flower that possibly will be registered in the near future. **\$4.00**
- AISLING** • 2 W-WR • (Crotty) • N.Z. L-M  
(Colins Joy x Eclat) x (Eclat x Cherryrim) This is the flower we have been aiming for. The colour of Colins Joy, with a show quality perianth. A rounded flower, with brilliant colour. The pure white perianth is smooth and even, and is complimented with a bowl shaped, white corona, heavily banded with deep red pink. A medium sized flower, approx 100 mms in diameter. It increases well, and is vigorous in growth. We think this flower has great potential, having already won on the show bench. Reg 2006. **\$10.00**
- AKALA** • 1 Y-Y • (Jackson) • Aust. E-M  
(Jobi x Sdlg 54-61) This is a show quality trumpet. A warm rich yellow in colour. It possesses a smooth even perianth, with a slender trumpet that has a slightly flanged rim. Altogether a pleasing flower. It has been around for a while, but still capable of winning in National shows. **\$5.00**
- ALPINE DREAM** • 2 W P • (Crotty) • N.Z. • 70-98 M  
(Culmination x Quasar) A good sized colourful nicely contrasted flower. Alpine Dream is a good quality garden flower, that is capable of producing the odd showable flower. This variety increases well, and is a strong grower. Nice strong colour. **\$10.00**
- ALTUN HA** • 2 Y.W • (Pearson) • England. L - M  
(Camelot x Daydream ) Few if any, modern flowers have had such a dramatic impact, and achieved, such dominance in their class as has "Altun Ha", in the division 2 reverse bicolours. Great size, clarity of colour, strong plant. **\$6.00**
- AMARETTO** • 4 W-PWP • (Cotty) • NZ • (96-93) M  
(Viola May x Accent) A nicely formed show quality double flower, with a strong stem and neck. It has a white perianth which is nicely in proportion to the unusually coloured petaloids, which makes up the centre of this flower. The pink petaloids are paleish, with a deeper pink edge. A pleasing flower, that has the potential for show and breeding. **\$10.00**
- APRICOT SUNDAE** • 4 WP • (Carncairn) • N Ireland M -L  
A really beautiful flower with smooth texture, resembling a pink and white 'Double Event'. Has gained awards on the show bench. **\$6.00**
- AQUA ROSE** • 4 W P-W • (Crotty) • NZ • (53-94) M  
(Tropic Isle x Eclat) A round colourful flower, with a good contrast between white and deep orange pink. It is a fully double flower, with a good strong stem. Not a show flower, but a clump of this in the garden really stands out. **\$4.00**
- ARCTIC FOX** • 2 W-W • (Crotty) • NZ L-M  
(Winfrith x Misty Glen) x Ashmore) This is one of the best white, large cups we have produced so far. A medium sized flower, it has a smooth round pure white perianth, and a bowl shaped corona with a neatly frilled edge. This has the potential to be a top show flower, and was placed third in the open single blooms at Nelson 2003 when under number. Limited stock. **\$5.00**
- AVOCET** • 7 W-YYW • (Mitsch) • USA L  
(Green Island x Chinese White x N. Jonquilla) A tall stemmed vigorous growing Jonquil Hybrid with nearly white flowers, with up to three florets per stem. Rounded white perianths of good substance, with saucer shaped crowns. Limited stock. **\$4.00**
- BACALL** • 11A Y-PPY • (Reed) • U.S.A • (Phantom x Lorikeet) A good sized flower, measuring around 103 mm in diameter. The perianth is a pleasing shade of lemon, that is a good contrast to the blush pink toned flat collar, which is edged lemon yellow. A pretty flower that's makes a welcome addition to any garden. Limited stock. **\$15.00**
- BADBURY RINGS** • 3 Y-YYR • (Blanchard) • UK L-M  
(Ferndown x Achduart) This is a very consistent flower. A tall and sturdy plant with rounded flowers, deep yellow, overlapping, very flat perianth segments, with a saucer cup of deeper gold, banded uniformly in bright orange red. This is a top show flower. Limited stock. **\$4.00**
- BARNDANCE** • 3 Y.R • (Crotty) • NZ M  
(Achduart x Trudy May) This is a good sized, nicely coloured show quality flower. We think it is the best of this cross that has produced many show winners. At the 2002 South Island National Show in Christchurch, it was Judged Premier Bloom in its class. It possesses a smooth, bright yellow perianth, and a round deep-red, well proportioned corona. All together this is a top quality flower, with a big future on the show bench. **\$4.00**
- BELLSONG** • 7 W-P • (Mitsch) • USA M  
Ivory white perianth, small bright pink cup, one or two blooms per stem. Free flowering. Very pretty. **\$4.00**
- BERCEUSE** • 2 W-P • (Mitsch) • USA M  
(Melody Lane x Rose Caprice) x (Carita x Accent) Clean intense colour, heavy substance, sheer elegance, can be used to give a description of this flower. The broad white perianth outer segments, almost touching are perfectly smooth and symmetrical being slightly reflexed. The mid length moderately expanded cup is deeply coloured intense rose pink with a touch of lavender. This is a beautiful show quality flower. **\$4.00**
- BEST NEWS** • 4 W-PWP • (Crotty) • NZ M  
(Tropic Isle x Eclat) This is a very brightly coloured, double flower. It possesses a good quality perianth, and the full centre, is made up of white, and deep red pink petaloids. A strong growing flower that holds it's head up well. Useful for show or breeding. **\$5.00**
- BIG SOFTEE** • 4 WW-PW • (Crotty) • NZ • (25-91) L - M  
(Kinbrace x Eclat) This is a good sized, brightly coloured garden flower, which is capable of producing the odd good show bloom. It has a round white perianth, and is centred with deep red-pink petaloid, with the odd white petal. A strong growing flower, that will not be overlooked in the garden. **\$4.00**
- BITTERN** • 12 Y-O • (Mitsch) • USA E  
(Matador x Cyclamineus) An attractive and unique flower with two or three blooms on a stem. The frilled crowns are rather long and are a bright orange red. Nice clear yellow perianth of good form. A prolific bloomer. Strongly scented. **\$4.00**
- BLANCO SOL** • 2 WW • (Crotty) • NZ M  
(Canisp x Seafarer) This is the best all white flower, yet produced by us. A very large flower that possesses a perfect Double Triangle Perianth, that is smooth, overlapping and a perfect foil, for the long narrow cylindrical corona. 2001 was a good year, being Champion Bloom at Timaru, and Premier 2 WW, and winner of the Milliken Trophy. (Best all white bloom in show) at the Dunedin South Island Show. A very good show flower with different form from most. Limited stock. **\$5.00**
- BLAZING GLORY** • 2 W.P • (Crotty) • NZ (49-94) L – M  
(Presidential Pink O.P) A very large, brightly coloured flower. A variety more suited for the garden, than the show bench. White, well overlapping perianth segments, are a perfect contrast, to the very frilled deep red-pink corona. A strong growing variety that can produce some very showable flowers. We like it. Limited stock. **\$4.00**
- BOBWHITE** • 7 Y-Y • (Mitsch) • USA M -L  
Clear yellow perianth with slightly deeper yellow corona. Very floriferous jonquil hybrid producing many stems, some bearing four to five blooms. Strong grower, good increaser. Makes small bulbs. Very sweetly scented. **\$4.00 or 5 for \$15.00**
- BRASS BUTTON** • 4 Y-Y • (McLennan) • NZ E  
(Arctic Gold x Fiji) sdlg no 94-6. Most flowers measure 74 mm approx, so this is an intermediate flower, which is included in the NZ intermediate list for showing. It is a rounded flower, smooth textured and of heavy substance. Mid yellow in colour, it has already won many prizes on the show bench. A nice flower. Limited stock. **\$6.00**
- BROOMHILL** • 2W-W • (Board) • UK M  
One of the whitest, smoothest and perfectly proportioned flowers, with lovely waxy texture. Has had many show prizes world wide. **\$4.00**
- BUFFAWN** • 7Y-Y • (Morril) • USA M  
(Unknown x Jonquilla) A tall flower on a strong stem, with two or three florets. Light buff coloured petals, with a slightly darker cup. A new colour in Jonquil Hybrids. Very fragrant. Much heavier in form than most Jonquil Hybrids. **\$4.00**
- BUNTING** • 7 Y-O • (Mitsch) • U S A M  
(Narvik x Jonquilla) One of the most beautiful red-cupped jonquillas. It has a very bright neat cup, of show quality. Most stems have two blooms. A good flower. **\$4.00**
- BURNSIDE** • 2 W-WP • (Crotty) • N.Z. L-M  
(Quasar x Culmination) Reg 2009. A rounded flower. Its pure white perianth is smooth and broad, its segments being well overlapping and nicely rounded. The saucer shaped corona is flattish and frilled at the rim. Its colour is white, edged by a fine band of apricot pink. A very pleasing flower, that is very showable. Something different. Limited stock. **\$4.00**
- CAMEO GOLD** • 1 Y-Y • (Bell) • NZ M  
(Dawngold x Gold Shower) A flower of superb quality and a rich golden yellow throughout. Broadly overlapping perianth and nicely balanced trumpet, neatly flanged and serrated at the brim. Tall and vigorous. Good quality. **\$4.00**
- CAMEO FLUSH** • 2 O-O • (Ramsay) • N.Z. M  
(Cowboy x Creagh Dubh (Sdlg No 94-45) Reg 2003) A good sized flower, can reach 115 mm in diameter. A roundish flower, it possesses a yellow perianth, which is deeply flushed with orange. The bowl shaped corona, is a deep orange red. Overall a good showy flower. Very useful in shows, where it has won many prizes. **\$8.00**

TIGER EYE



NICKELODEON



NORTY



HORNSPIPE



AISLING



DIVERSITY



IVORY GLOW



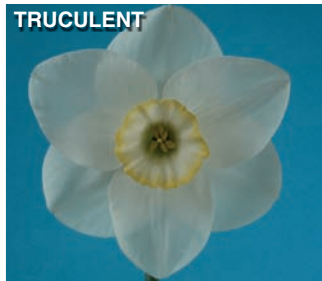
LEMON AND BARLEY



OHAKUNE



TRUCULENT



OJIBWA



ABRAXIS



CINDICEE



SOLAR DISC



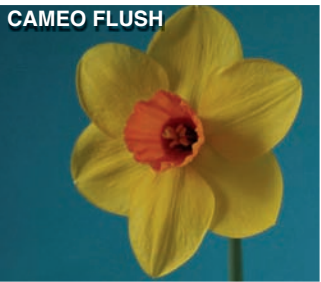
SUNSET STRIP



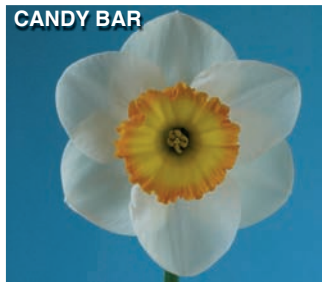
MILLENNIUM GOLD



CAMEO FLUSH



CANDY BAR



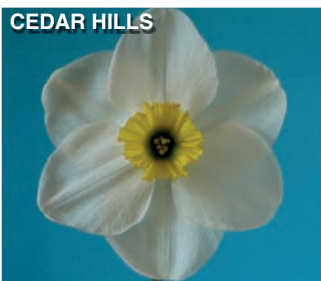
FLEETING GLIMPSE



GLEN DEVERON



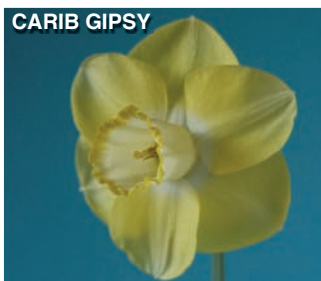
CEDAR HILLS



VALLEY LAD



CARIB GIPSY



GIPSY CLASS



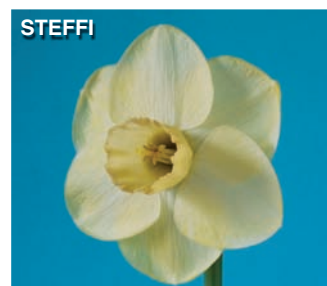
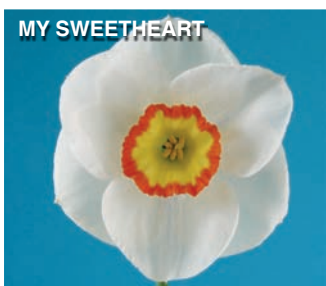
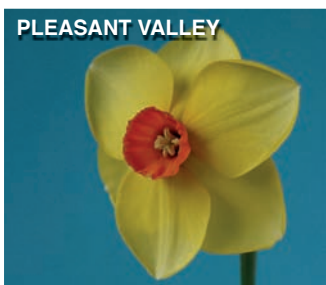
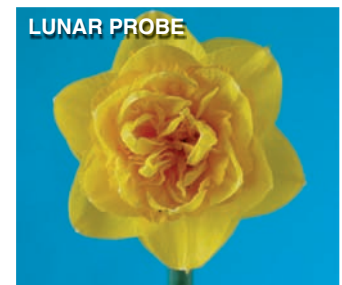
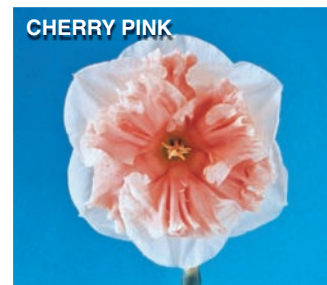
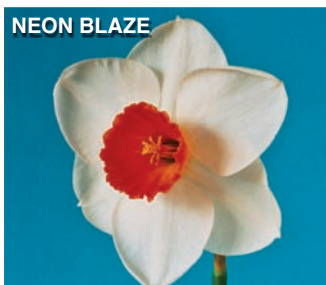
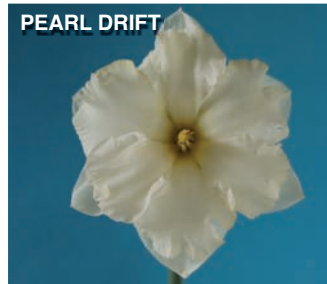
- CAMEO SUN** • 1 Y-Y • (Ramsay) • NZ E-M  
(Gold Tan x Director) Now well established, as one of the best yellow trumpets. Many premier and best blooms to its credit, all over New Zealand. An imposing flower up to five inches across. Excellent poise, with broad triangular petals, and long trumpet, fluted at the mouth. Bright gold. Very limited stock. **\$5.00**
- CANDY BAR** • 2 W-YO • (Crotty) • NZ (130-93) L-M  
(Seedling x Seedling) This is a round, nicely formed flower, with a white perianth, that is mostly free of nicks, and ridges. It is set off by a saucer shaped yellow corona with a deep orange rim, which is evenly frilled at the edge. A strong grower, with show possibilities. **\$4.00**
- CANDY CREAM** • 2 W-YY • (Crotty) • NZ M  
(Spot On x Sunchild) Very round flower, smooth white perianth. Large cup lies flat against perianth, and when first out is bright yellow; which on maturity fades to yellow centre, with paler outer edge. Produces many show quality blooms. Vigorous. **\$6.00**
- CARAMEL JOY** • 11A W-O • (Crotty) • NZ M  
(Unknown Parentage) The white perianth segments are of heavy substance, and are well overlapped. The flat smooth split corona, is heavily lobed at the edge, opens lemon yellow, and matures to a pleasing orange yellow, similar to the colour of caramel, hence its name. Not a huge flower, growing up to 100 mm, but in our opinion is our best show split corona to date. A flower of the future. Limited stock. **\$10.00**
- CARIB GIPSY** • 2 Y-WWY • (Pearson) • U.K L  
(Camelot x Daydream) Opening greenish lemon, the petals darken and the trumpet fades to white, except for a gold velvet rim. Broad smooth petals with a long trumpet. Useful for late shows. A sister seedling to 'Altun Ha'. **\$6.00**
- CASTANETS** • 8 Y-O • (Pannill) • USA E  
(Matador x Grand Soleil d'or) A good early flowering Tazetta. Castanets usually has 4 to 8 flowers per stem, each measuring 50mm in diameter. It also has the added advantage of being sweetly scented. The perianth is mid yellow and is well set off by a bright orange corona. Altogether a very pleasing flower. This variety is very showable, and together with a strong constitution, it is well worth having. Limited Stock. **\$6.00**
- CAVALLI KING** • 4 Y-O • (McLennan) • N.Z E  
(Cinel x Fiji) A good-sized double, growing to 102 mm. It has the advantage of flowering early in the season. One of the first showable double flowers to open. Perianth and other petaloid segments, in 4-5 whorls, broadly ovate, mid yellow. The inner segments open light orange, becoming mid-orange at maturity. Sun proof. Cavalli King is a very useful flower, especially in the South Island, when most good doubles open later. **\$6.00**
- CEDAR HILLS** • 3 W-GYY • (Mitsch-Havens) • USA L  
(Impala x Green Hills) One of our favorites, the large green eye zone, which extends nearly half the cup, seems to dominate one's attention when first observing. The absolute perfection of form and clean colouration, are tributes to both its parents. Clean white perianth, and deep yellow short cup completes the picture. Very limited stock. **\$5.00**
- CELTIC FLAME** • 4 W-P.W • (Crotty) • NZ (58-95) M  
(Montage x Eclat) A strong growing variety, of medium size. Clean white perianth segments, with bright pink and white centre petaloids. A garden flower, but a stunning bit of colour. Stands out. **\$5.00**
- CHANSON** • 1 W.P • (Duncan) • Ire E-M  
(Verran x Algarve) Quality division 1 W.Ps are rare, and Chanson is up there with the best. The smooth, round petals are pure white, and form a neat double triangle. The long flared trumpet is a deep apple blossom pink, with a paler pink frilled rim. A outstanding show bloom. Very limited stock. **\$25.00**
- CHERRYGARDENS** • 2 W-GPP • (Burr) England L-M  
(Easter Moon x Fair Prospect) Now well established as a regular prize winner, this nicely proportioned large flower, has a crystalline smooth flat perianth, and a rather narrow bowl cup, of pink shading to cherry-red at the rim. A very good flower that produces many fine blooms. **\$6.00**
- CHERNOBYL** • 11A W-YPP • (Crotty) • NZ M  
(Pearl Shell x Accent) When this flower opens the perianth segments are tinged primrose yellow but at maturity become pure white. The six split corona segments are more than three quarters the length of the perianth. In the centre the colour is pink tinged yellow, the outer two thirds is coloured pure pink with a slightly lighter edge. This is a very attractive show flower, with a good stem and neck. Limited stock. **\$6.00**
- CHERRY PINK** • 11A W-P • (Crotty) • NZ M  
(Peach Glow x Ashmore) Registered 2005, 105 mm in diameter. Cherry Pink is a good sized, very colourful split corona daffodil. It has a pure white, roundish perianth, the segments are very well overlapping. The deep pink corona segments, lighten in colour towards the edge. A nicely formed flower, its corona covers about 2/3 of the perianth, making it good for shows. A lovely bright flower that looks good in the garden or on the show bench. Limited Stock. **\$10.00**
- CHILLY DAWN** • 1 W.W • (Crotty) • N.Z L-M  
(Silent Valley x Panache) Registered 2006, Chilly Dawn is another good variety from the successful cross we made a few years ago. A medium sized flower, it possesses an even flat, smooth perianth that is well set off by a slender trumpet, with an expanded ruffled edge. A pleasing flower that we think has a good show future. Limited stock. **\$15.00**
- CHINCHILLA** • 2 WW • (Duncan) • N.Ireland L-M  
(Easter Moon x White Star) This has been a favourite since first flowering, on account of its distinctive deep ultra-soft texture allied to great substance and wonderfully consistent exhibition quality. Blooms are of pure white and large size. **\$5.00**
- CHUDLEIGH** • 2 Y-W • (Crotty) • NZ (43-98) M  
(Vicki x Trumpet Warrior) This flower came from a cross between a double and a large cup, so the possibilities of getting a large cup were fairly good. Chudleigh has not as yet been registered. It produces good reverse colour, and has been used by us on the show bench. The perianth is deep lemon yellow and is flat and smooth. The evenly shaped corona is nice and white, and is set off by lemon yellow band on its ruffled rim. Useful flower that increases well. **\$4.00**
- CINDICEE** • 2 W-Y.P • (Crotty) • NZ M  
(Eclat x Rainbow x Cherryrim) This flower possesses a white, very round perianth, that is a perfect foil for the expanded saucer shaped corona, which is pinkish toned yellow, with a bright pink border. This flower in our opinion, is the perfect type, to breed split coronas. It is fertile, but we are still waiting for its first progeny to flower. We have high hopes. Good increaser. **\$5.00**
- CLARE** • 7 Y-Y • (Gray) • UK L-M  
A beautiful dark lemon miniature Jonquil, which increases rapidly. Grows to eight inches tall. As the flower ages the perianth lightens, but the small crown stays dark lemon with a deep green eye. Scented. **\$4.00**
- COLBLANC** • 11 W-GWW • (Gerritsen) • Hol. M  
Pure white split daffodil of beautiful proportions. One of our favourites **\$5.00**
- COLIN'S GOLD** • 2 Y-Y • (Crotty) • NZ M  
(Golden Aura x Camelot) This could be described as an improved Golden Aura, with better size. Deep golden yellow, it possesses a smooth perianth, of good quality. The vase shaped wavy edged corona, is well proportioned, and of a similar colour. A nice flower which holds its head up well on the show bench. **\$4.00**
- COLIN'S JOY** • 2 W-WR • (Crotty) • NZ M  
Glistening white very rounded perianth, bowl shaped cream cup. Broadly rimmed deep red pink. The deepest rimmed colour seen by us to date, and the first flower to be registered by us. A show flower. **\$4.00**
- COMO** • 9 W-GGR • Gourlay) • UK L  
A very fine poet of good form and quality. The perianth segments are perfectly round, pure snow white, with smooth texture. The attractive small eye has a nice band of bright red around a neatly frilled margin and a bright green centre. A charming little flower, but rather late in season. **\$4.00 or 5 for \$15.00**
- CONESTOGA** • 2 W-GYO • (Bender) • USA M  
(Orion x Anacapri) A round flower, smooth flat, very overlapping white perianth, set off by a flat saucer shaped corona, coloured bright orange with a heavily ruffled edge. A show flower of quality as most flowers are showable. Limited stock. **\$4.00**
- CONGRESS** • 11 Y-YYO • (Gerritsen) Holland M  
Deep yellow well formed perianth, with yellow orange collar sitting flat against the perianth, has a deeper orange red edge. Bright showy flower. **\$4.00 or 5 for \$15.00**
- COOL EVENING** • 11 A W-P • (Mitsch) • USA M  
(Precident x Accent x Phantom) One of the most refined of the pink split coronas bred by Grant Mitsch. Endowed with delicate pink, flat, split corona and a well formed, rounded, white perianth. Limited stock. **\$4.00**
- COPPER BLAZE** • 11 A W-YP • (Crotty) • NZ L-M  
(Chernobyl x Josephs Coat) The white perianth segments are of good form, and makes a nice contrast to the orange – pink split corona, that sits flat against them. This colour is quite unique, as it is a quite different shade to any other we have yet produced. A strong flower that at its best is very showable. Limited stock. **\$8.00**
- CORBIERE** • 1 Y-YOO • (Lea) • England M  
(Gold Convention x Glenfarclas ) An older variety, but still used with success in National Shows. Not a huge flower, it grows to 100 mm in diameter. It is well formed and very smooth. Having a rounded yellow perianth, and a funnel shaped trumpet, which opens deep yellow and becomes suffused with glowing orange. A strong grower. **\$5.00**
- CORN SILK** • 11A Y-Y • (Crotty) • NZ M  
(Honeybird OP) Smooth show quality flower. Perianth is well formed and is slightly paler than the darker yellow collar, which lies very flat and almost covers the entire perianth. The collar is pleasingly set off with a nicely ruffled edge. Strong plant. **\$4.00**
- COUNTRY BOY** • 2 Y-R • (Crotty) • NZ E-M  
(Achduart x Trudy May) Another flower from this prolific cross, this is a large cup. This variety flowers earlier than its siblings, and this is valuable for the early shows. A well formed flower, with a golden yellow perianth, and a neat orange-red, vase shaped corona. It was registered in 2002, and is a variety we use on the show bench quite often. **\$4.00 or 5 for \$15.00**
- COVER UP** • 11A W-P • (Crotty) • NZ M  
(Phantom x Spaceship) One of our best and favourite split coronas. A lovely bright coloured flower. It has a good white perianth, which is nicely set off by bright, pure pink split corona, that fits flat against the

- perianth segments. This is a proven show flower, that we have used in many of our successful David Bell Trophy exhibits. **\$15.00**
- CREAGH DUBH** • 2 O-R • (Lea) • England M  
(Chungking x Spry) x Homefires x Vulcan) This is one of the darkest of its type and also one of the best for exhibition. Deep, coppery orange red perianth with a deep red goblet shaped cup. Tall stem, perfect poise. Limited stock. **\$4.00**
- CREDITLINE** • 1 W-Y • (Crotty) • NZ M  
(Palmer N.6 x Vigilante) This flower possesses a top show quality perianth, being very overlapping and smooth. The pale yellow trumpet is vase shaped, expanding at the edge, to a nicely pleated rim. Has the look of a large cup but with us it definitely measures trumpet. Has been used in shows with success. Good strong flower. Limited stock. **\$6.00**
- CRUSHED ICE** • 11 AW-W • (Crotty) • NZ (6-8) E  
This flower is of unknown parentage, but because of its pure white colouring, and earliness, it was kept and produces many show flowers early in the season. On opening the collar is pale primrose but ages to pure white. Not the largest of flowers, it possesses a daintiness of form which makes it most appealing. Limited stock **\$6.00**
- CRYSTAL OWL** • 2WW • (Crotty) • N.Z L-M  
(Misty Veil x River Queen) This flower has a nicely formed pure white perianth, that is smooth and overlapping. It possesses a pure white straight corona, with a clean cut rim. As it flowers Late-Mid season, it is a very handy flower for those late shows. A good strong all round flower, that is perfectly showable. Limited stock. **\$20.00**
- CRYSTAL ROSE** • 4 W-W • (Crotty) • NZ (13-89) L - M  
(Gay Song O.P) This flower opens with a very small amount of colour and soon goes pure white. A well formed, fully double flower, it has a strong stem, and holds its head up well. Most flowers are smooth and should be a useful show flower. Strong grower. **\$12.00**
- CULMINATION** • 2 W-P 20' • (Mitsch) • USA M  
Large flower with broad, very flat, overlapping smooth white perianth. Good sized crown of soft salmon rose. The white perianth contains evidence of pink colouration and may be valuable in breeding all pinks Show flower. **\$4.00 or 5 for \$15.00**
- DAILSONG** • 2 W-P • (Crotty) • NZ L-M  
(Valley Song x Dailmanach) This was registered in 2002. A show flower, it has a smooth white perianth, that is well formed and overlapping. The cup shaped corona is well proportioned and is a pleasing shade of pure pink. A variety that produces lots of showable flowers. We think it has a future, for show and garden. **\$4.00**
- DAILWYN** • 2 W-P • (Crotty) • N.Z L  
(Ivory Glow x Dailmanach) It has a smooth, white, double triangle perianth that is well overlapped. It vase shaped corona, is coloured a nice shade of soft pink. It flowers late in the season, about the same time as its parent "Dailmanach". A clean cut flower, that is useful for late shows. **\$15.00**
- DANCETIME** • 11A Y-YP • (Crotty) • NZ (62-91) L-M  
(Chernobyl x Joseph's Coat) The perianth segments are a pale light lemon almost white. The large showy split corona is centred yellowish pink which deepens to pure deep pink towards the edge, which is heavily ruffled. This variety was used in our winning entry in the David Bell Trophy at Daffodil World, Christchurch, 1996. Lovely colour. **\$6.00**
- DATELINE** • 3 Y-O • (Duncan) • N-Ireland L-M  
(Montego x Achduart) A.M. 1986. A beautifully formed perianth of broad spade-shaped segments of clear mid-yellow, provides an ideal background for the shallow bowl shaped crown, of deep orange. Free flowering plant, has won many prizes on the show bench. **\$4.00**
- DAZZLER** • 2 Y-OR • (Mitsch) • USA M  
In our fields an intense gold perianth and a fiery orange red, almost flat fluted crown combine to make this a very distinctive garden flower. Showy. **\$4.00**
- DEBS JEWEL** • 2 W-GWR • (Crotty) • NZ M  
(Debbie Joan x Picotee Witch) This flower has an ice-white, broad, well overlapping perianth, and a large expanded white corona, heavily banded with a very ruffled bright red-pink rim. This is a very showy flower that would not be out of it's depth in a collection class. This is one of our personal favourites, and shows potential as a breeder. Good increaser. **\$5.00**
- DELTA DAWN** • 11A. W-P • (Crotty) • NZ (30-91) M  
(Pearl Shell x Accent) x Pasteline) This variety has a nice white perianth, that is a good background, to the large deep pink, split corona, that covers most of the perianth segments. This is a deeply coloured flower, that is mainly for the garden, but it does produce the odd showable flower. Lovely colour. **\$4.00**
- DEWBERRY** • 11A Y-WY • (Crotty) • NZ (19-93) M  
(Unknown) A chance find, this is our first reversed bi-colour, split corona This flower opens pure lemon, as it matures, the split corona fades to white with an even yellow rim at its edge. A strong growing variety. It is useful for show or garden. **\$4.00**
- DISCOVERY** • 4 Y-O • (Mitsch) • USA L  
Broad overlapping perianth is deep lemon yellow, petals of same shade interspersed with small pale orange ones in centre. Good compact double. **\$4.00 or 5 for \$15.00**
- DIVERSITY** • 11 A. W-PPW. • (Duncan) • N. Ireland M  
(Movie Star x Last Chance) Consistency seems to be an inevitable problem with split coronas, but this one gives a high proportion of show flowers. With an evenly split pink corona, which pales on the outer edge. We think this is a good flower, and have used it on several occasions in winning exhibits at shows. Stands up well. Limited stock. **\$15.00**
- DREAM ON** • 2 W-YYO • (Crotty) • NZ L - M  
(Bandit O.P) Dream On was registered in 2005. It is a good sized flower, most flowers are around 100mm in diameter. A roundish flower, it has a pure white perianth which is very smooth, overlapping and rounded at the tips. The flat expanded corona, is yellow with a broad band of bright orange at the edge. Dream On was first shown in our Raisers Class entry at Ashburton 2006. We think this is a good show flower. The potential for showing is enormous. Limited Stock. **\$6.00**
- EL LUTE'** • 1 YW- WY • (Crotty) • N.Z E-M  
(Trumpet Warrior x Lemon Snow) Named after the song sung by the group " Boney M". It flowers in the early part of the season. A good sized flower, it has a smooth lemon yellow perianth, with a white halo at the centre. It opens pure lemon yellow, but at maturity its trumpet turns white with a lemon yellow rim. "El Lute' " was placed first in the open single blooms at the Christchurch South Island Show 2011. When it was under a number, it had definite show potential. **\$15.00**
- EVESHAM** • 3 W- G.Y.Y • (Lea) • Eng M  
(Loch Assynt x Sdlg. 68/15 A ) A large flower growing up to 113 mm in diameter. Very white, smooth, well overlapping perianth, with a small, much frilled yellow crown, with a deep green eye. This is a well known show flower, that has won many prizes. Recommended. **\$6.00**
- FALCONET** • 8 Y-R • (Mitsch) • USA E - M  
(Matador x Jonquilla) A delightful, rather small flower, with three to five, or more florets on a stem. The deep yellow perianths, are quite flat, and overlapping. The striking bright orange crowns, lend brilliance to this flower. Strongly scented. Nice show flower. Limited stock. **\$6.00**
- FANAD HEAD** • 9 W-GGR • (Ballydorn) • Ireland L  
(Cantabile Hybrid. O.P) Corona disc-shaped, opening green, with orange at the rim, becoming pale sage green, with a broad band of brick red at the rim. Opening late in the season. Limited stock. **\$4.00**
- FEVERPITCH** • 2 Y-R • (Crotty) • NZ M  
(Achduart x Trudy May) This is a large strong growing flower, with a smooth deep yellow overlapping perianth. The bowl shaped corona is a deep orange red. It is a very good show flower, being placed second in it's class at Oamaru 1999. **\$4.00 or 5 for \$15.00**
- FIRE EYED** • 3 Y-R • (Crotty) • NZ (68-91) M  
(Achduart x Trudy May) Another from this prolific cross. This variety has pale lemon yellow perianth segments, that are smooth and very flat. The whole flower is set off by a deep orange red, small cup, with a crinkled rim. Hence its name. A nice, different coloured flower, that produces many showable flowers. **\$4.00**
- FIREMIST** • 2 O-O • (Crotty) • NZ (18-76) M-L  
Red flushed yellow perianth, bright red goblet shaped cup. Colour intensifies with age. A very good flower. **\$4.00 or 5 for \$15.00**
- FLASH GORDON** • 11 AY-O • (Crotty) • NZ (39-90) M  
(Ashanti O.P) Golden yellow perianth segments are overlapping and slightly pointed. The mid orange collar sits flat against the perianth. This flower is smoother than a lot of the more ruffled split coronas and at its best is quite showable. Strong grower and good increaser. **\$4.00 or 5 for \$15.00**
- FLEETING GLIMPSE** • 2 Y-YR • (Coombes) • N.Z M  
(Valley Glow x Gold Finger) When first shown at the South Island National, at Dunedin 2005, under No G C 1-04. Fleeting Glimpse came first in the open single bloom, 2 Y- O/R class, and second in the seedling class, for 2 Y - O/R. The smooth rounded all yellow perianth, is complimented by the 2 /3 length flared corona, which is yellow, moving through to a strong orange red, ribbed rim. A strong growing and consistent bloom. Top show quality. Limited stock. **\$25.00**
- FLEETING MOMENT** • 2 Y-YR • (Coombes) • N.Z M  
(Valley Glow x Goldfinger) On its first outing at the South Island National Show at Christchurch 2011, Fleeting Moment was judged 1st in the open seedling class for 2 YO-R blooms. Its smooth yellow rounded petals are complimented by a 1/3 length yellow cup, with a touch of orange red on its ribbed rim. Altogether a strong growing and consistent bloom of show quality. Limited stock. **\$15.00**
- FLORENCE JOY** • 2 W-W • (Brogden) • NZ M  
(Guiding Light x Verona sdlg) The broad triangular perianth segments are pure white, very smooth and overlapping, and are a perfect foil for the white half length, well balanced, straight corona, with a slightly ruffled edge. Good show flower that has won many prizes at National Shows. **\$6.00**
- FOUNDLING** • 6 W-P • (Carncairn) • UK M-L  
Reflexing white perianth, beautifully rounded cup of deep rose pink, darker at base. Sturdy attractive little flower. **\$4.00**
- FRAMBOISE** • 2 W-GWR • (Crotty) • N.Z (30-89) M  
(Colins Joy x Cherryrim x Accent) The white perianth segments are overlapping and slightly pointed. The large expanded saucer shaped corona is heavily ruffled and banded deep raspberry red (hence its name). The center is whitish and has a deep green eye. This flower was shown under number at the World Daffodil Convention Show at



- Christchurch 1996 in our winning International Hybridizers class. This is possibly our deepest colour to date, and must be very useful for breeding deep coloured flowers. Limited stock. **\$6.00**
- FREYA** • 2 W-YY • (Crotty) • NZ M  
(Eminent x Lysander) Glistening white perianth segments, overlapping and slightly pointed. The cup shaped corona is yellow being slightly deeper at the rim. A top quality show flower with tall, strong stems. **\$4.00**
- GARFIELD** • 3 Y-R • (Crotty) • NZ M  
(Achuart x Trudy May) One of the best of this cross. A large flower, opening later than its sister "Ome Omy". It is of top show quality. The smooth, flat, overlapping perianth is a pleasing mid yellow. The whole flower is set off by a small deep red cup, with a crinkled edge. A strong grower with a good stem and neck. **\$4.00 or 5 for \$15.00**
- GAY KYBO** • 4 W-O • (Richardson) • UK M  
A very full double flower. Large, pale cream perianth interspersed with small segments of fiery orange, making a lovely contrast. The top show double. **\$5.00**
- GAY SONG** • 4 W-W • (Richardson) • UK M-L  
Very large glistening white double, with faint touch of primrose in the centre. Opens creamy primrose and fades to pure white. **\$6.00**
- GEMTIME** • 4 W-PW • (Crotty) • NZ L - M  
(Tropic Isle x Eclat) Gemtime is an intermediate sized flower and is on the NDS approved list. A real little gem which measures 73mms on average. It has a good round perianth, which is pure white. The centre petaloids are a deep apricot pink, interspersed with the odd white petal. This is one of our favourites. Limited stock. **\$10.00**
- GEORGIE PIE** • 2 Y-W.Y • (Coombes) • NZ L - M  
(Parents Unknown) This is a small flower, measuring around 75 mm. It is an intermediate, and has been accepted for showing, as such, by the NZ Daffodil Society. Georgie Pie opens pure lemon yellow, but at maturity, the corona turns white with a yellow rim. A very smooth little flower, it has a good show future. **\$5.00**
- GIPSY CLASS** • 11A Y-YYO • (Crotty) • N.Z M  
(Tiritomba x Egmont King) Registered 2006. Gipsy Class is right up with the best split coronas we have produced. It seems to be consistent in that most flowers are showable. The yellow perianth segments are well formed and fairly free of creases. The flat corona is yellow, flushed orange, deepening to deep orange at their nicely ruffled edges. Having Egmont King as a parent, Gipsy Class is a vigorous grower. The potential for showing is great. Limited stock. **\$20.00**
- GLENLOSSIE** • 9 W-GYR • (Hamilton) • N.Z L  
(Parentage unknown) Selected from seed, crossed by Max Hamilton, Grown and selected by Pleasant Valley Daffodils. Glenlossie is similar in shape to Glenlily, differing from it, only by the broader red rim, and perhaps flowering a day or two later. We think it has a good potential as a show flower. Limited stock. **\$45.00**
- GOLD CACHE** • 11 A W-YP • (Crotty) • NZ M  
(Honeybird O.P) Flower opens with a white, slightly pointed perianth and plain yellow collar. After a day or two the collar turns a deeper yellow with a yellow rim, finally becoming creamy pastel pink. The colour changes of this flower are startling. **\$4.00 or 5 for \$15.00**
- GOLD CARD** • 1 Y-Y • (Crotty) • N.Z M  
(Midas Touch x Valley Lode) Not a large flower, but well formed and very smooth in texture. Its perianth is well formed and even, the trumpet is flared at the rim. Its shape and pleasing golden colour adds up to a useful show variety. Limited stock. **\$30.00**
- GOLD IMP** • 2 Y-O • (Crotty) • NZ M  
Similar to Bantam in size. This flower, now registered, fits into the Intermediate class. Rounded flat, smooth perianth with a neat mid orange cup, with slightly frilled edge. Nearly all flowers are of show quality. Strong grower. **\$4.00**
- GOLD PHANTOM** • 1 YY • (Richardson) • Ireland M  
(Arctic Gold O.P) A medium sized flower of splendid form and quality. The large overlapping petals are round and slightly reflexed. The nicely balanced trumpet has a neatly serrated mouth. Deep gold throughout. A show flower and a strong grower. **\$4.00**
- GOLD REIGN** • 2 Y-Y • (Crotty) • NZ M  
(Daydream x Camelot) This is a sister seedling to 'Tucaman and is a large flower with a good overlapping deep yellow perianth. The large vase shaped cup is deep yellow throughout. Strong grower and a good show flower. **\$4.00 or 5 for \$15.00**
- GOLDEN AURA** • 2 Y-Y • (Richardson) • UK M  
Top quality show flower, with very smooth golden yellow perianth, and nicely balanced cup of the same colour. **\$4.00 or 5 for \$15.00**
- GOLDEN DUCAT** • 4 Y-Y • (Speelman) M  
Large golden yellow double, lovely form and quality despite its immense size. Strong stem. Vigorous and grows well here. **\$4.00**
- GOLDEN GLISTEN** • 1 Y-Y • (Bell) • NZ M  
Large glistening golden yellow trumpet, with nicely rolled rim. Good garden flower. **\$4.00 or 5 for \$15.00**
- GOLDEN YEARS** • 6 Y-Y • (Mitsch) • USA E  
(Focal Point x Salem) x N. Cyclamineus Clear yellow, a similar colour to "Rapture", but with much broader perianth segments. The trumpet is very slightly flared, and ruffled, giving character, but maintaining tailored, very classical cyclamineus appearance. A small flower growing 12" to 14" high. A show flower. Limited stock. **\$5.00**
- GREBE** • 4Y-O • (Mitsch) • USA L - M  
Very full double, outer petals clear mid yellow, centre of yellow and orange petaloids. Very striking. **\$4.00**
- GROSVENOR** • 4 W-P • (Duncan) N Ireland L-M  
(Pink Pageant x Replete) From a large number of pink double seedlings raised by Brian Duncan, this is undoubtedly one of the best, scoring highly on quality of back, perianth fullness, depth of pink colour, form and size. Limited stock. **\$4.00**
- GROUSE** • 9 W-GYR • (Hamilton) • N.Z L-M  
CC 32-02 (Parentage Unknown) Grown at Pleasant Valley from seed sent by Max Hamilton. Not yet registered. A nicely formed poeticus, it flowers a little earlier than most of the other poeticus hybrids, but still late in the season. It has good colour, Showable. Limited stock. **\$20.00**
- GULL** • 2 W.W • (Mitsch) • U.S.A L - M  
(Easter Moon x Broughshane) A large clean white flower with a satin smooth finish. Both the perianth segments and the crown are rather longer than most flowers in its class. Nicely balanced show flower, with green shadings at the base of the crown. Limited stock. **\$5.00**
- HEAMOOR** • 4 Y-Y • (Scamp) • England. E  
(St Keverne x Tamar Fire) A sister seedling to "John Daniel", it is a rounded flower, with the best of show forms, and has won many top awards, both nationally and internationally. The several layers of perianth and petaloid segments, are rich golden yellow, with coronal segments, slightly darker in tone. Limited stock. **\$6.00**
- HELEN O'MORE** • 4 Y-O • (O'More) • N.Z M  
(Richardson seedling x Red Coat) Helen O'More is a medium sized double flower, approx 95 mm wide. It is rounded in shape, with a good mix of yellow and orange petaloids. This flower was registered in 1996, but is still winning prizes in top shows. Grows well in pots. Limited stock. **\$6.00**
- HEY JUDE** • 2 W-PP • (Crotty) • NZ M  
(Accent x Teleta) Flat, smooth, white, slightly pointed perianth. The long vase shaped cup is mid pink with a paler pink rim. This is a top show flower being in our winning entry of '12 Bred by Exhibitor' at Daffodil World Convention, Christchurch 1996 **\$4.00 or 5 for \$15.00**
- HEY YOU** • 2 Y-YYO • (Coombes) N.Z M  
(Valley Glow x Gold Finger) I was once told to never use Gold Finger as a breeder, as it was too small. "Hey You" proves this theory wrong. On a good year, it will grow to 150mm, and still retain reasonable form. The pale yellow petals form a neat double triangle and has a slight reflex. Its 2/3 length flared cup is yellow, through half its length, moving to an orange red rim. Not a show flower, but a talking point in the garden, and is proving useful as a breeder. Limited stock. **\$10.00**
- HIGH VIEW** • 1 Y-Y • (Crotty) • NZ E - M  
(Midas Touch O.P) Registered 2007. High View is a large pure golden yellow trumpet daffodil. It has very tall stems, (hence its name). It stands out as it grows higher than its neighbours. In 2008 it was premier 1 Y-Y at Timaru, and was placed 3rd in the National open single bloom 1 Y-Y class at Hope. It has a flat smooth overlapping perianth, with an even shaped trumpet, with a expanding, flanged edge. We think High View has a show future. Limited stock. **\$10.00**
- HIGH HOPES** • 11 W.W • (Coombes) • N.Z E  
(Pearl Drift x Sdlg) This flower is one of the first to appear in our patch in the spring. Its very white double triangle petals form a backdrop for its very ruffled center, which has lemon, yellow and primrose tones, but fades out to white as the flower matures. Only a garden flower, but a nice splash of colour after a long cold winter. Limited stock. **\$10.00**
- HIGHFIELD BEAUTY** • 8 Y-GYO • (Mott) • Aus M  
Lemon yellow perianth with orange cup. Two or three flowers per stem. Outstanding show flower. Scented. **\$4.00**
- HONEYCHILD** • 3 W-WYO • (Crotty) • NZ L - M  
(Sunchild x Pure Magic) Registered 2007. Flowering in the later half of the season, Honeychild has a pure white, very overlapping, smooth flat perianth, that is set off by a small flat corona, which is white with a band of yellow orange at the rim. A nice flower that comes in handy for later shows. Honeychild needs some protection, as like most small cups, the tender rim can burn in adverse conditions. Limited stock. **\$5.00**
- HOOT OWL** • 9 W-GYR • (Max Hamilton) • N.Z L  
(Unknown Parentage) A poet seedling Max sent to us to grow on. It was registered with Max as hybridizer. A smallish flower growing to 55 mm wide, but it is all quality. A very round flower, it has a pure white, overlapping, smooth perianth, set off by a small flat green eyed yellow corona, with a deep red even rim. Flowers about the usual time for poets, and with us, seems to increase reasonably well. We think this is one of the best poets we have seen, and predict it has a good future on the show bench. Limited stock. **\$20.00**
- HOOPOE** • 8 Y.O • (Mitsch) • USA L-M  
(Matador x N. Jonquilla) (Pronounced Hoo-Poo) A medium sized flower borne in groups of two or three, or more on a stem. Rounded yellow perianths, and orange crowns. A good grower and increaser, as well as being very fragrant. **\$4.00**
- HORNPIPE** • 1 W-P • (Duncan) • Ireland M  
(Camden x Bright Flame) Quality white and pink trumpets are rare, which makes Hornpipe quiet special. Not a large flower, but balanced and well formed. Pure white ovate petals, with a short, strong pink trumpet, which is flared and has a ruffled rolled rim. Lovely show quality flower. Limited stock. **\$25.00**

- HOT SECRET** • 2 W-R • (Crotty) • N.Z. M  
(Quasar x Culmination) Registered 2007. Hot Secret has a well formed white perianth, that is nicely overlapping and flat. Its bowl shaped corona is an unusual shape of deep red – pink. Its expanded rim is nicely frilled. This flower has not yet been shown, but the colour is quite unique. A very attractive flower. Limited stock **\$10.00**
- HUSH MONEY** • 2 W-R • (Crotty) • N.Z. • (57-96) L - M  
(Astrodome x Eclat) A round flower, with white, very overlapping, perianth segments, with a flat, expanding, heavily ruffled corona, brilliantly coloured a deep red-pink. Purely a garden flower, it really stands out, when seen in a clump. Strong stem and neck. **\$5.00**
- IBIS** • 6 W-Y • (Mitsch) • U.S.A. E  
Milk, white star like perianth. Slender pale lemon crown. Well reflexed. Graceful early small flower. **\$4.00**
- ICED LASS** • 2 W-W • (Crotty) • NZ E  
(Montana x Seafarer) Bred from two white trumpets this flower just fails to measure trumpet. Pure white, very smooth, pointed perianth that shows few nicks. Long tapering cup has a slightly wavy edge. Good stem and neck. Was 'Best Vase of Three' at Timaru 1997. **\$4.00**
- IMPECCABLE** • 2 Y-Y • (Jackson) • Aust. E-M  
(Abona x Sdlg 3/74) Not a large flower, being 100 mm approx in diameter. Bright golden yellow. One of the smoothest flowers ever bred, a characteristic it passes on to its progeny. The perianth is very broadly overlapping. Its corona is almost as long as the perianth segments, slightly darker yellow in tone. It is cylindrical and lightly ribbed, with its mouth a little frilled. A top show variety. **\$6.00**
- INDIAN MAID** • 7 O-R • (Pannill) • USA M  
(Jezebel x Jonquilla) Well named jonquil with a beautiful dusky colouring. A good show flower, usually with two or three flowers per stem. Strongly scented. **\$4.00**
- IVORY GLOW** • 2 W-PP • (Coombes) • NZ L -M  
(Seedling x Seedling) Registered 2006 was seedling G1-94. A large flower, with a well rounded smooth, overlapping, almost off-white perianth. The straight smooth corona is coloured pink with undertones of orange yellow. Altogether a very pleasing flower, that has been producing top seedlings, when crossed with flowers, such as "Neon Blaze". This flower is showable, but I think its future is as a breeder of show flowers. Good strong flower. **\$6.00**
- IZZYS GEM** • 9 W-GRR • (Dreaver) N.Z. L  
(Breeding unknown) Sdlg No 20 Reg 2001 A lovely little poeticus hybrid, flowering later in the season. A ice white perianth, with a small flat disc - corona, green eye, orange center and red rim. Registered by Ron Abernethy for the breeder. A beautiful jewel like flower. Limited stock. **\$6.00**
- JACKWOOD** • 11A Y-YYO • (Scamp) • England M  
(St Keverne x Tiritomba) This is one of the best show, split coronas available. Beautifully balanced, and very smooth. The colours are rich golden shades, with a flat split corona, of slightly darker tone, with a touch of orange at the rim. Limited stock. **\$5.00**
- JINGLE BELLS** • 5 W-Y • (Pannill) • USA L -M  
(Fair Colleen x Triandrus Albus) This flower is a show quality Triandrus hybrid. Grows to a height of 30 cm and opens later than most in this class, making it valuable for later shows. Usually two or three flowers per stem. **\$4.00**
- JOYSTAR** • 2 W-YR • (Crotty) • NZ (52-97) M  
(Quasar x Colins Joy) A brightly coloured garden flower, that looks good when grown in a clump. Pure white, slightly pointed perianth segments, are set off by a deep yellow corona with a vivid red-pink band at the edge. A very colourful flower. **\$5.00**
- KAPITI CHAMELEON** • 8 Y-Y • (McLennan) • NZ E  
This flower is one of John McLennan's very early Tazettas. One of the very first flowers, to flower at Pleasant Valley. Usually has 3 large flowers per stem. Opens yellow, and becomes lighter as its ages. It is well named. The colour changes are very noticeable. Sweetly scented. Limited stock. **\$4.00**
- KARAMINOR** • 7 Y-O • (Davenport) • NZ M  
Bright yellow perianth, luminous small orange cup, two or three flowers per stem. Sweetly scented. Show quality. **\$4.00**
- KING SIZE** • 11 Y-Y • (Gerritsen) • Holland M  
Mid yellow perianth, deeper yellow very flat collar almost envelops the perianth. Large and showy. **\$4.00**
- KIWI SOLSTICE** • 4 Y-R • (Hamilton) • N.Z. M  
(Breeding Unknown) A top show flower. It has won many major prizes at National Shows, over the years. It is a sister to Kiwi Sunset, but has a superior show record. A very brightly coloured double flower, being deep golden yellow at its center. Always a contender on the show bench, and a good garden flower as well. **\$20.00**
- KIWI SUNSET** • 4 Y-R • (Hamilton) • NZ M  
(Breeding Unknown) Although this does not have the same track record as its sister Kiwi Solstice, it is actually ranked by Max as the better of the two. A good sized flower, the perianth and other petaloid segments are in four whorls, brilliant yellow, with deep orange red corona segments. A show flower, Kiwi Sunset has been successful at National Shows. Limited Stock. **\$10.00**
- LADY CARO** • 2 W-P • (Crotty) • NZ M  
(Accent x Telita) A sister seedling to Hey Jude'. Very flat, smooth, double triangle, white perianth with a well proportioned bright pink vase shaped cup, sometimes showing a narrow paler pink edge. A show flower being second in the 2W-P Open Class at Daffodil World Convention, Christchurch 1996. **\$4.00 or 5 for \$15.00**
- LADY DIANA** • 2 W-W • (Broadfield) • Aust M  
(Lady Slim x Gwyn) This lovely flower was named after the late Princess of Wales. The pure white double triangle petals, are complimented by a large white flared cup, with a slight roll on the rim. A very smooth well balanced flower. Top show quality. Very limited stock. **\$40.00**
- LAPWING** • 5 WY • (Mitsch) • USA M  
Quite flat white perianth of very good substance, with a soft lemon, bell shaped cup. Comes with one or two blooms to a stem. Very good show flower. **\$4.00 or 5 for \$15.00**
- LEHIAM** • 2 Y-Y • (Crotty) • NZ M  
Very smooth deep yellow perianth, with a straight large cup of similar colour. Produces large quantity of show quality blooms. We recommend this. **\$4.00 or 5 for \$15.00**
- LEMON AND BARLEY** 8 YY (Hall) N.Z. E  
(Grand Monarque x Sdlg 93T4) For many years now, Wilf has sent us some of his Tazetta's to trial in a cold climate. Because they are so early, the foliage suffers from severe frosts, but the blooms are glorious. Lemon and Barley petals are light lemon in colour, with the cup being a bright green yellow. Can have up to 20 florets per stem. Useful for show or garden. Limited stock. **\$10.00**
- LESLIE HILL** • 1 W-GWW • (Carncairn) • N. Ireland M  
(Chinese White x Aye) A very neat and consistent white trumpet. Long lasting, uniform and making excellent bulbs. Has gained awards on the show bench. Limited stock. **\$4.00**
- LIFE** • 7 YW-Y 20' • (Mitsch) • USA L  
Soft lemon flower with a slight white halo on the flat perianth. The crown is a similar tone with a pinkish light some years. A vigorous grower, usually three blooms per stem. Sweetly scented. Luminous colour. **\$4.00**
- LIMEQUILLA** • 7 W-W • (Havens) • USA L  
(Lime chiffon x N. Jonquilla) A most unique jonquilla with a limey ivory colour. The cup is considerably larger than is found in most jonquils, and is in pleasing balance with the well formed flat perianth. Generally two or three florets per stem. At maturity the entire flower develops into limey-white. Produces large amounts of seed. **\$6.00**
- LINEDANCE** • 3 Y-GR • (Crotty) • NZ (48-91) M  
(Achduart x Trudy May) A very rounded mid-sized flower. Round overlapping deep yellow perianth segments are smooth and in good balance with the small red corona which has an unusual deep green eye. Not the largest but produces lots of nicely formed flowers. Vigorous. **\$4.00 or 5 for \$15.00**
- LORIKEET** • 1 Y-P • (Mitsch) • USA M  
(Rima OP.) A quite large flower having a soft medium yellow perianth, and a large flared trumpet of apricot pink. This is a nicely coloured flower and is quite capable of producing top quality show flowers. Very limited stock. **\$6.00**
- LOUGH BAWN** • 2 Y-R • (Carncairn) • UK E -M  
Rounded, smooth yellow perianth, orange red straight edged cup. Quality show flower. Sunproof. **\$4.00 or 5 for \$15.00**
- LUCY JORDAN** • 2 WP • (Crotty) • N.Z. L  
(Sdlg x Berceuse) Lucy Jordan is a flower of substance. The white petals are ovate and even. The bright pink cup is straight, with a frilled rim. A bit late for showing, but a lovely garden flower, that is proving a good breeder. Limited stock. **\$10.00**
- LUNAR PROBE** • 4 Y-YO • (McLennan) E-M  
(Kazan x Golden Orbit) Another very good double from John's collection. The very smooth back petals are light yellow, and the inner petaloids are of yellow and orange tones. A very consistent bloom and one of our go to flowers for early shows. Limited stock. **\$10.00**
- MARABOU** • 4 W-P • (Evans) • USA M  
Rather full double of unique form. The centre is not as deep pink as some in the series, but the stem is stronger. Round flower. Has won prizes in shows. **\$4.00**
- MATADOR** • 8 Y-O • (Oregon Bulb Farm) • USA E  
Sulphur yellow perianth, green eyed bright orange cup, up to three or more flowers per stem. Scented. One of the better varieties in this class. **\$4.00**
- MELSTAR** • 2 W-PPR • (Crotty) • N.Z. L-M  
(Dailmanach x Presidential Pink) A large flower growing up to 120mm in diameter. A very bright colourful show flower. The double triangle shaped perianth is pure white and overlapping. The nice background to the neat vase shaped corona, which is deep pink at the base, shading to a deep red pink outer band. "Melstar" has been shown with success in the raisers class at the South Island shows. Limited stock. **\$15.00**
- MICHICO** • 2 W-PP • (Crotty) • NZ M  
(Eclat x Cherryrim) Nicely rounded overlapping white perianth, with a saucer-shaped cup of apricot pink, banded with a deeper colour at the edge. This is a top flower, which has the capability of doing well in shows. **\$4.00**



- MILKWOOD** • 11A W-Y • (Crotty) • NZ M  
(Shipstone x Colblanc) Registration pending. Milkwood is a large flower, as you would expect when one of its parents is Colblanc. A much better formed flower than its parent, it has good show form. Its white perianth is smooth and nicely formed, being broad and overlapping. The primrose yellow split corona, covers 2/3 of the perianth. All over, the flower is nicely proportioned. We think Milkwood has show potential. It is a flower with a good constitution. Limited Stock. **\$8.00**
- MINTY** • 2 Y-R • (Crotty) N.Z • (13-81) M  
(Falstaff x Checkmate) Deep yellow round perianth segments, overlapping and broad. Bright orange red cup shaped crown, with wavy scalloped edge. Nice strongly coloured flower. Good stem and neck. Limited stock. **\$4.00**
- MISSION BELLS** • 5 W-W • (Mitsch) • USA M  
(Silver Bells O.P) The slightly reflexing ivory white perianth is relatively broad for a triandrus and the long bowl shaped crown of the same colour, with a yellow green eye, lends grace and charm. Very floriferous, with 1 – 3 flowers per stem. Limited Stock. **\$10.00**
- MONARO** • 2 W-YO • (Crotty) • N.Z • 36-01 L-M  
(Sdlg X sdlg) A variety that flowers later in the season. It possesses a pure white, smooth overlapping perianth and a flat expanded saucer shaped corona, which has a white center. A band of yellow with a fine orange edging. A nice flower that could be useful for later shows. **\$5.00**
- MONKS WOOD** • 1 YYG-Y • (Pearson) • Eng M  
(Gin and Lime x Seedling 84-2-G 29 x (Daydream x (Ave x Tornamona) Registered 1998. Monks Wood is quite a large flower, growing to 115mm in diameter. The flower is double triangle in shape. Its perianth is smooth and even, its trumpet is tapered with a smooth even rim. The whole flower is a uniform deep lemon yellow. Monks Wood is a top show variety, having been successful in N. Z shows. Limited stock. **\$6.00**
- MONTAGE** • 4 W-WP • (Crotty) • NZ M-L  
(Accent x Pink Chiffon) Very smooth, white perianth segments. Inner segments made up of white and bright apricot pink, with colour deepening towards the edge. Showy, strong growing flower. **\$4.00**
- MOONBRIDE** • 11A W-Y • (Crotty) • N.Z M  
(Unknown Parentage) Reg 2009. Moonbride is a top quality show flower. It was premier bloom at the South Island National Show at Ashburton, in 2006. Its white perianth segments are smooth and even, and overlap nicely, making a lovely contrast for the flat bright yellow split corona, which sits flat against the perianth. We consider this to be one of our best splits. Limited stock. **\$15.00**
- MOON SHADOW** • 3 W-GYY (Postles) Eng M  
(Goldeneye x Lea Sdlg. 2-4-69) A large flower being 110mm in diameter. Rounded perianth segments, smooth and very broadly ovate. Creamy white on opening, soon becoming pure white. The broad shallow corona is an unfading citron yellow, with green at the base, mouth loosely frilled and lobed. Moon Shadow is a top show flower, having won many prizes in New Zealand and overseas. Limited Stock. **\$8.00**
- MOSS VALLEY** • 3 W-GYY • (Crotty) • NZ (14-82) L-M  
(Kimmeridge x Purbeck) Rounded smooth white perianth. Small cup has a deep green eye, pale yellow centre and a deeper orange yellow crinkled rim. Useful show flower. **\$4.00 or 5 for \$15.00**
- MOSSY RIDGE** • 3 W-YY • (Crotty) • N.Z L-M  
(Pearl Drift x Shine On) Registration pending. 2007. Mossy Ridge has one of the deepest green eyes I have seen in a daffodil. It has a smooth white perianth that is nicely formed and overlapping. The small crinkled yellow corona is a slightly deeper colour at the rim. To my eye, this is a very pleasing flower, that has show potential. Some of its progeny have even deeper green eyes. Strong grower. **\$6.00**
- MR COOL** • 1 Y-Y • (Crotty) • NZ E-M  
(Honeybird OP) This large flower opens early mid season. At first it opens light lemon cream, but at maturity the perianth is a shade lighter. The perianth segments are smooth, well formed and overlapping, and the trumpet is neat with a flared mouth. A very good collection flower and produces many show blooms but unfortunately it is too light in colour for single bloom classes. In the 1991 Timaru Show it was Premier Sulphur Trumpet as C.C 67-81. **\$4.00**
- MULVIHILLS** • 2 Y-YP • (Crotty) • NZ (89-97) M  
(Seedling x Seedling) This is definitely not a show flower, but is a distinct novelty. A very pretty flower, having a pale yellow perianth, with a pale pink blush. The heavily frilled expanded corona, is paler at the base and darker at the edge. Purely a garden flower, but so different. A great talking point. Limited stock. **\$4.00 or 5 for \$15.00**
- MY SWEETHEART** • 3 W-YYR • (Reed) • USA M  
(Hampstead O.P) Reg 1997 A small brightly coloured flower. Rounded, ice white, very overlapping perianth, with a small bowl shaped white cup, band vivid orange red. The 2008 Daffodil Register has the diameter as 67 mm. This would make it intermediate, but with us, it grows larger, around the 80 mm mark, or slightly over. One of the loveliest flower we grow. A great favourite. Limited stock. **\$15.00**
- NEON BLAZE** • 2 W- GRR • (Crotty) • NZ L-M  
(Presidential Pink x Quasar) With this flower we have achieved our dream, of putting deep red-pink colour onto a show quality perianth. The pure white, silky smooth, flat overlapping, rounded perianth, is in good proportion to the bowl shaped deep red-pink cup, with a fluted edge. "Neon Blaze" was shown for the first time at Dunedin 2001, where it won its open single bloom class. We think this is the best flower we have bred to this date. It has also shown ability as a seed parent, setting large amounts of seed. A flower with a future. Limited stock. **\$15.00**
- NICKELODEON** • 8 W-W • (Hall) N.Z E-M  
(Grand Monarque x Poeticus seedling) This is one of our favourites. The white petals are about 50 mm in diameter, well rounded and heavily creased. The deep green eye and disc shaped cup make this a most appealing flower. Normally 5 to 7 florets per stem. Not the best show form, but it is often seen on the show bench. Limited stock. **\$20.00**
- NIGHT MUSIC** • 4 W-P • (Mitsch) • USA L-M  
(Pink Chiffon x 029/2, Carita x 220, Green Island x Accent) Heavy substance, broad petaloids, broad perianth, depth and quality of pink. Night Music has all of these traits. The depth of colour has been consistent, as has its form and durability. This is a top show flower. **\$5.00**
- NOUGAT** • 2 Y-R • (Crotty) • NZ M  
(Falstaff x Checkmate) Smooth rounded overlapping yellow perianth. The bowl shaped cup is orange red and is nicely in proportion with the rest of the flower. This is a good variety which produces show quality blooms. **\$4.00 or 5 for \$15.00**
- OJIBWA** • 3 Y-YO • (Crotty) N.Z M  
(Feverpitch x Hunter 20-81) This variety will grow very large, having been measured at 125mm in diameter. The overlapping perianth is golden yellow, rounded in shape, it is a good background to the saucer shaped corona, that is heavily banded bright orange. Ojibwa has been shown in collection classes, in national shows with success. Over all a good strong variety. **\$30.00**
- OPPOET** • 9 W-GYR • (Coombes) • NZ L-M  
(Hamzali x Poet Seedling) This is a larger flower than most poets. Pure white overlapping perianth segments, and neat green throated yellow corona, finely rimmed bright red. This flower opens at least a fortnight earlier than most poets, and must be of value for breeding earlier flowering varieties. Oppoet was judged first in the open single bloom at the Ashburton South Island Show 2006, when shown under its seedling No G.C 102-02. Very useful flower. **\$6.00**
- OME OMY** • 3 YR • (Crotty) • NZ E-M  
(Trudy May x Acduart) This is one of the better flowers we have produced, and was used in our NZ Raisers Cup entry at Dunedin 2001. The yellow perianth is smooth, and overlapping, with very few ridges. It is set off with a neat well balanced, small orange red cup, with a neat edge. This is a top show quality flower, but for best results it is better to have some shelter from the sun, before showing. Good stem and neck. Champion Bloom at the N.I National Show 2006/07. **\$6.00**
- PAIGE** • 3 W-YYR • (Coombes) • NZ M  
(Unknown) This is an intermediate sized flower, that has been accepted by the NZ National Daffodil Society, to be able to compete in the Intermediate Classes at National Shows. Pure white, smooth, overlapping perianth segments and a small neat yellow corona, boarded by a fine band of vibrant red. Like most rimmed flowers it is not sunproof, and needs protection from wind and sun. A very good flower with show potential **\$4.00**
- PEARL DRIFT** • 11A W-W • (Crotty) • NZ M  
(Ice Crystal O.P) Well formed smooth white perianth. The flat collar is smooth with a nicely scalloped edge. The collar like most whites opens primrose, but at maturity is pure white. Good stem and neck. Top show bloom. Limited stock. **\$5.00**
- PEGGYDALE** • 4 W-P • (Crotty) • NZ (39-97) M  
(Windblown O.P x Dawncrest) Peggydale is a very large full double. Very brightly coloured, and very showy. More of a garden variety, but does produce the odd show quality flower. Nice bit of colour. Limited stock. **\$8.00**
- PERFECK** • 2 Y-Y • (Crotty) • NZ M  
(Golden Aura x Camelot) This flower fits into the intermediate class, having been accepted as such by the National Daffodil Society. The small flowers are smooth and even, and most produced are of show quality. The perianth is round and overlapping, and the corona is in balance with the perianth segments, and the whole flower is uniform golden yellow. This little flower is one of our favourites. **\$4.00**
- PERIPHERAL PINK** • 2 W-GWP • (Mitch) • USA L-M  
(President x Eclat) This flower has the intense colouration of Eclat and the impeccable show form of President.. Very round white perianth segments. The flared crown has an intense red/pink rim, white mid section, and a green eye. **\$4.00 or 5 for \$15.00**
- PIKORRIE** • 4 W-WY • (Crotty) • NZ (5-80) E-M  
(Windblown O.P) Ivory white perianth is broad and overlapping, with inner segments a mixture of ivory and deep primrose. This is a very full double and grows to a large size and is mostly of good form. Nice flower. **\$5.00**
- PILLOW TALK** • 2 W-W • (Crotty) • NZ (45-92) E  
(Canisp O.P) This flower grows very large, sometimes up to 130mm. Because of it's size it appears to be a trumpet, but when measured it is definitely a large cup. It tends to resemble it's parent in shape, but is much more vigorous. Ice white in colour. It is a novelty that could be useful in shows. Limited stock. **\$5.00**

- PINK BOMB** • 2 W-PPR • (Mitsch-Havens) • USA L - M  
(Precedent x Eclat) Perhaps the most deeply coloured of the series, the large, flared, scalloped cup develops deep pink colour after opening, the rim remaining rose red. The broad white perianth seems to intensify the brightness of the cup, making startling colour in the garden. **\$4.00**
- PINK DECLARATION** • 2W-P • (Mitsch-Havens) • USA L-M  
(Precedent x Eclat) A large flower with heavy substance combined with bright colour. The flared ruffled apricot pink cup is more deeply coloured at the scalloped rim. Broad rounded perianth segments and tall stems provide an excellent flower for the garden. **\$5.00**
- PINK PAGEANT** • 4 W-WPP • (Duncan) • N Ireland L - M  
(Falaise x Debutante) x Polonaise Fully double flower with wide spread round, pure white perianth. A large deep pink cup, sometimes entire and sometimes broken, lies almost flat against the perianth and is filled with nicely placed pink and white petaloids. Well poised, strong stem, short neck. Fertile. **\$4.00**
- PINK PARADISE** • 4 W-P • (Duncan) • Northern Ireland L  
(Falaise x Debutante x Polonaise) The pure white and fine textured perianth and bright rosy pink petaloids combine to make this a most refined exhibition flower. Strong plant, good stem and neck. Fertile both ways. **\$4.00**
- PINK SPARKLER** • 2 W-P • (Mitsch-Havens) • USA L - M  
(Precedent x Eclat) A unique flower with bright apricot pink flat cup. Interspersed with a few white flecks, suggested by name. Broad rounded perianth completes a delightful flower for the garden. Limited stock. **\$4.00**
- PINK SWAN** • 2 W-P • (Mitsch-Havens) • USA M  
(Mrs O'Ronalds x Debutante) This flower will grow to a large size. A lovely soft pink colouring makes it very desirable for flower arranging. Large smooth broad perianth segments, with a large bowl shaped crown, constitutes a well balanced flower. Worthy for showing. Flowers borne on tall stems. **\$6.00**
- PINK TANGO** • 11 A W-P • (Mitsch) • USA E - M  
(Loch Maree x Radiation) x (Accent x Phantom) Slightly ruffled pink corona, split and laid back against the broad clean white perianth segments. Heavy substance and strong colour are top qualities in this flower. Limited stock. **\$5.00**
- PITTA** • 2 W-P • (Mitsch) • USA M  
Very rounded ivory white perianth, with saucer shaped cup of apricot pink to base. Produces quality blooms. **\$4.00 or 5 for \$15.00**
- PLEASANT VALLEY** • 3 Y-R • (Crotty) • N.Z. M  
(Achduart x Trudie May) Another of this prolific cross. This one named after our home district. The bright mid-yellow perianth segments are broad, smooth, and overlapping. A perfect foil for the deep red small corona. Not the largest of the cross, but most flowers are showable. "Pleasant Valley" was placed first, in its single bloom class, at the South Island show, at Nelson 2003, when shown under its seedling no 49-95. **\$4.00**
- PRECOCIOUS** • 2 WP • (Mitsch) • USA L - M  
(Precedent x Eclat) Very large flat rounded white perianth, with a large bowl shaped crown of salmon rose, having ruffled and fluted edges. Spectacular flower. Limited stock. **\$5.00**
- PRESIDENTIAL PINK** • 2 W-P • 21' (Mitsch) • USA M  
All the bright colour and regal poise befitting its name. Intense reddish orange pink cup. Broad, rounded perianth of white accentuates the cup colour. The cup is very interesting to study with its colour innuendoes from rosy pink to orange, deeper near margin. Top flower. **\$4.00 or 5 for \$15.00**
- PUNCHLINE** • 7 Y-YP • (Mitsch) • USA L-M  
(Quick Step x Silken Sails) Quite an unusual flower, with good sized rounded perianths of Ivory buff, and nearly flat crowns, of yellow, with pinkish rims. Two or three good sized flowers on each stem. Limited stock. **\$4.00**
- PURBECK** • 3 W-YYO • (Blanchard) • England M  
(Roimond x Arbar) Show flower with lovely form. Sparkling smooth white perianth makes a perfect foil for the neat cup, with a pale green base and a bright orange band at the mouth. Not a new flower but still good for showing. **\$4.00**
- PURE TONE** • 2 W-YY • (Crotty) • NZ (53-75) L - M  
(Cherryrim x CaraNome) Beautifully formed round flower. Broad overlapping petals, white and smooth, with a saucer shaped cup of yellow, with a deeper yellow rim sometimes showing traces of pink. Good show flower. **\$4.00 or 5 for \$15.00**
- RADIANT GEM** • 8 Y-R • (Mitsch/Havens) • USA L - M  
(Matador x N.Jonquilla) One of the best of this series, Radiant Gem is most similar to 'Hoopoe' but has a broad rounded perianth of deeper golden colour. Contrasted with the bright orange red cup, the flower stands out among others in the garden. Generally 3-6 florets per stem. Limited stock. **\$6.00**
- RAPTURE** • 6 Y-Y • (Mitsch) • USA E  
Strongly reflexed cool lemon yellow perianth, with narrow yellow trumpet. Smooth show flower. **\$4.00**
- RED ECHO** • 2 Y-R • (Crotty) • NZ M - L  
(Trudy May x Achduart) This is a later flower, but definitely of top quality. The bright yellow, round, overlapping perianth is set off by the sharply contrasting deep red, bowl shaped corona. This strong growing flower is a good increaser, with strong stem and neck **\$4.00**
- RED LEGEND** • 2 Y-R • (Crotty) • NZ E - M  
Smooth golden yellow perianth, expanded large cup of deep scarlet red. Brightest flower in our field. **\$4.00 or 5 for \$15.00**
- REDLINE** • 2 Y-R • (Crotty) • NZ • (30-94) E-M  
(Achduart x Trudy May) This is another round flower from this cross. The smooth overlapping perianth segments, tend to pale as the flower matures. The whole flower is set off by the deep-red, round saucer shaped, flat Corona. The flower is most unusual. **\$4.00 or 5 for \$15.00**
- REPLETE** • 4 W-WPP • (Evans) • USA M  
An American raised double of different style and colouring. Not quite of exhibition form the flower is very full, with pure white back segments, and petaloids of pleasing reddish pink. Fertile. Very good garden flower. **\$4.00 or 5 for \$15.00**
- RINGWOOD** • 3 W-WWO • (Blanchard) • Eng M  
(Purbeck x Kimmeridge) Not a large flower, reaching the size of 95mm in diameter. "Ringwood" has a smooth glistening white perianth. The neat cup shaped corona, opens with a pale yellow centre, but at maturity is white with a bright orange well defined rim. A bright, neat, showy little flower that is well worth entering in any flower show. Limited stock. **\$10.00**
- RINGING BELLS** • 5 W-W • (Mitsch-Havens) • USA L  
(Quick Step x Triandrus Albus) A sister to 'Petrel' being a little less formal and slightly larger. Has a light pleasant fragrance. Up to eight flowers per stem, generally three to seven. Extremely floriferous show flower. Limited stock. **\$4.00**
- ROCKALL** • 3 W-R • (Richardson) • UK M  
Slightly pointed pure white perianth, medium sized saucer shaped cup is brilliant scarlet red. Show flower. **\$4.00**
- ROSE BABE** • 11A W-YP • (Crotty) • NZ (39-88) L - M  
(Pearl Shell x Accent) Slightly pointed white perianth with a heavily textured split corona of yellow flushed pink. The pink coloration is stronger towards the heavily scalloped edge. This is a good garden flower, very different from most split coronas. **\$4.00**
- ROYAL MARINE** • 2 W-Y.O.O • (Lea) • Eng M  
(Colley Gate x Ibberton) Grows up to 110 mm wide. It has a pure white, well overlapping, smooth perianth, and a saucer shaped corona, which is yellow, deeply banded rich orange, with a nice green eye. This is a good flower that has won many show prizes. Limited stock. **\$4.00**
- RUBY LUSTRE** • 2 W-R • (Crotty) • N.Z. L - M  
(Culmination x Presidential Pink) Registered 2006. Ruby Lustre is blessed with a pure white perianth, that is overlapping, smooth and flat. The tips are rounded, giving the flower a pleasing round shape The deep red corona is bowl shaped and edged with a neat frill. Ruby Lustre was premier bloom in the South Island National Show at Ashburton in 2006. Limited stock. **\$20.00**
- SABRE WING** • 5 W-W • (Mitsch) • USA M  
Very white flower with rounded flat perianth and bowl shaped cup with green centre. Some years it has two blooms per stem, others borne singly. Top show flower. **\$4.00 or 5 for \$15.00**
- SANTA ANNA** • 2 WW • (Crotty) • N.Z. M  
(Blanco Sol x Silver Convention) Sdlg 14-03 Reg 2011 Growing to 110 mm in size, its pure white perianth forms a double triangle shape. The segments are smooth, overlapping and are of heavy substance. The long funnel shaped corona, is creamy white, smooth with a flared and frilled mouth. This flower is a strong grower, having vigour of its parent, "Blanco Sol". **\$20.00**
- SCILLYN WHITE** • 8 W-Y M  
White perianth, small primrose cup, four to five flowers per stem. Very sweetly scented. **\$4.00**
- SEA BELLE** • 2 W-YP • (Crotty) • NZ (31 -88) M  
(Precedent x Eclat) The smooth, slightly pointed perianth has a saucer shaped corona with a heavily scalloped edge lying flat against the perianth segments. The corona is a light creamy yellow, heavily blushed pink with a deeper outer rim of pink. Has potential for breeding split coronas. A real novelty for the garden. **\$4.00**
- SENTINEL** • 2 W-P • (Mitsch) • USA M  
Large rounded flat perianth of white, has a huge nearly flat crown of Apricot salmon to pink. Has been called the Pink Pinwheel. **\$4.00 or 5 for \$15.00**
- SHINING COMET** • 2 W -P • (Crotty) • N.Z • 56-96 M  
(Astrodome x Eclat) Shining Comet is purely a garden flower, a real novelty. A very round flower, its white perianth is broad and overlapping. The large flat disc shaped corona, is coloured in tones of pink. You would not put it on the show bench, but it certainly makes a talking point in the garden. **\$5.00**
- SHIPSTONE** • 11A W-Y • (Crotty) • NZ • (12-81) M  
(Seedling O.P) This is the largest of the split coronas we have produced. Mainly a garden flower, it has a white perianth, and a flat yellow split corona, which almost covers the perianth segments. The size of this flower makes it unusual being almost as large as 'King Size'. **\$5.00**
- SHRIKE** • 11A W-P • (Mitsch) • USA M  
(D7/12 x Cuckoo) The symmetrical white perianth complements a brilliant orange pink frilled corona, splitting evenly between the perianth segments. One of the strongest attention callers in our planting. Magnificent colour for the garden, this variety really stands out. Not for the purist, but very different. Limited stock. **\$5.00**

- SIGNORINA** • 2 W-GYP • (Duncan) • N Ireland L -M  
(Fellowship x High Society) This little intermediate sized flower, is of perfect form, and most attractive and brilliant colour. The perianth is pure white, the funnel cup is deep yellow, banded deep raspberry pink. The whole effect enhanced by a vivid emerald eye. Limited stock. **\$4.00**
- SILKY MIDAS** • 2 Y-Y • (Crotty) • NZ (223-81) M  
(Golden Aura x Camelot) Sister seedling to Lehiam and Valley Lode. Flat very smooth perianth with very few nicks. The neat cup is finished with a serrated edge. The colour is a uniform deep yellow throughout. Produces many show quality blooms. **\$4.00 or 5 for \$15.00**
- SILVER SPIRIT** • 1 W-W • (Crotty) • NZ M  
(Silent Valley x Panache) This is our first white trumpet, (Reg. 2002) having a nicely formed, white perianth, that is smooth and overlapping. The long slender trumpet opens primrose, but soon turns pure white. The trumpet is set off by an evenly flared, finely serrated rim. This is a nice flower, that has been placed on the show bench. Has much show potential. **\$6.00**
- SKIDOO** • 4 W-WYW • (Crotty) • N.Z 63-92 L-M  
(Angkor x Sdlg. 17-81) This is a good sized, mainly garden variety. Its biggest plus is, its ability to stand up to adverse weather conditions. It possesses shorter strong stem and neck. A big advantage in windy conditions. A fully double flower, its outer segments are white, while its inner ones are pale yellow, interspersed with white. **\$6.00**
- SKY SONG** • 2 W.P • (Crotty) • NZ L - M  
(Unknown) The breeding of this flower was lost, when a flood washed away the tag, but we can see Presidential Pink in the colour of the corona. White, very smooth perianth, of show quality, sets off the deep rose pink vase shaped corona, with a ruffled rim. This flower has lots of show potential. Limited stock. **\$4.00**
- SOFT RUBY** • 2 WP • (Crotty) • N.Z L-M  
(Presidential Pink x Quasar) Reg 2010 Sdlg No 21-00 double triangle shape, 110 mm wide. A nice clean coloured flower, pure white, smooth, overlapping perianth, is a good contrast for the soft pink cup shaped corona, with a neatly frilled rim. We think this variety has a future in shows. Named after the great grand- daughter of the hybridizer. Limited stock. **\$10.00**
- SOLAR DISC** • 11A Y-Y • (Crotty) M  
(Young Nick x Camelot) This is without a doubt the best split corona flower we have produced. A strong grower it is also of the best show form, being Premier Bloom at the Daffodil Convention Show at Christchurch 1996, when it was first shown. It also won the single bloom class at Oamaru 1999. It has well overlapping smooth yellow perianth segments, and a slightly deeper yellow split corona which sits against the perianth with a nicely scalloped edge. A top flower. **\$8.00**
- SOLAR WIND** • 4 WY • (Hunter) • N.Z E-M  
(Blossom x Virma) This very full double, is one of our favourites. The outer petals are white, smooth and neatly layered. The inner petaloids are a light greenish colour at the base, moving through to a strong yellow. As with many bi-colours, the contrast between white and yellow is startling. A useful show flower, and lovely in the garden. Limited stock. **\$15.00**
- SOPRANO** • 2 W-GPP • (Duncan) • N. Ireland L  
(High Society x Valinor) A most consistent exhibition pink. The deep reddish-pink cup colour changes as the flower develops. The mid-zone becomes a slightly paler lilac pink, but the flower maintains its attractiveness at all stages. The pure white perianth is smooth and overlapping. Altogether a top show variety. Limited stock. **\$6.00**
- SPUN HONEY** • 4 Y-Y • (Mitsch) • USA L -M  
Large double of soft clear light lemon with some deeper coloured segments in centre of flower. Free flowering. Show bloom. One of our favourites. **\$4.00**
- STAR CREDIT** • 2 W-YR • (Crotty) • NZ (60-81) L - M  
(Eclat x Cherryrim) Rounded, much overlapping white perianth segments The bowl shaped cup opens primrose with a red pink rim. At maturity it fades to almost cream which tends to accentuate the rim colour. Good flower with strong clean colour. **\$4.00 or 5 for \$15.00**
- STARFALL** • 2 W-P • (Mitch) • USA M  
(Sdlg x Eclat) Rounded white perianth. The frilly flared cup has a wide variety of colour hues. A reddish zone near the base, apricot pink mid zone, and a very slight lemon frill make a startling range of colours. Limited stock. **\$4.00**
- STARLAND** • 1 W-YY • (Crotty) • NZ M  
(Unknown) A nicely formed show flower. Perianth segments open off-white, but at maturity they become pure white, overlapping and smooth. They form a good back for the long cylinder shaped trumpet, that is nicely flared and serrated at the edge. The trumpet opens lemon-yellow, with a deeper outer half. When shown under its seedling No C.C 56-98 it won the open single bloom classes, at Hope 2003, and Ashburton 2006. A flower with a future. Limited stock. **\$6.00**
- STEFFI** • 2 Y-YP • (Crotty) • NZ M  
(48-81 Euphony O.P) x (59-81 Euphony O.P) This is a intermediate sized flower, that has been accepted for the N.D.S Intermediate list. The average diameter of "Steffi" grown here is approx 73 mm. This making it a true intermediate. It possesses a smooth, round, overlapping lemon yellow perianth, and a neat vase shaped corona of the same colour, with a pale pinkish edge. "Steffi" has already won prizes in the intermediate section. One of our best intermediate varieties. **\$5.00**
- STORMY WEATHER** • 1 W-Y • (Bell) • NZ M  
Well overlapping smooth pure white perianth, with a beautifully frilled, nicely contrasting golden trumpet. Very strong in colour and perfectly balanced. Tall and vigorous. Top show flower. **\$5.00**
- STRATHISLA** • 2 YY • (Crotty) • N.Z M  
(Gold Reign x Gold Script sdlg) A large flower growing to 120mm in diameter. Perianth is double triangle in shape. Very smooth and rounded. The vase shaped corona, has a smooth edge and is slightly in colour than its perianth segments. We consider this flower to be one, if not the best all yellow flower we have produced at Pleasant Valley. Limited stock. **\$35.00**
- STRATOSPHERE** • 7 Y-Y • (Mitsch) • USA L -M  
Clear deep yellow perianths and small crowns of deep gold. One to three blooms per stem. Sweetly scented. Very good show flower. **\$4.00 or 5 for \$15.00**
- SUCH FUN** • 2 W-WY • (Crotty) • NZ (82-93) L -M  
(Spot On x Sunchild) A very round flower, with pure white, smooth, very overlapping perianth segments. The saucer shape corona is nicely balanced with a frilled rim. On opening the corona is solid yellow but at maturity it is white with a deep band of deep golden yellow. This flower won its seedling class at Christchurch 1996, and we think it has a good future as a show flower. **\$4.00**
- SUGAR MOUNTAIN** • 3 W-GYO • (Coombes) • N.Z M  
(Woodland Beauty x Kimmeridge x Purbeck) Sugar Mountain is a flower of substance. Growing to about 100 mm in diameter. The silky smooth, pure white and very round petals make a lovely background to the neat small cup, with its grey - green eye, with a band of yellow and finished off with an orange frilled rim. An attractive flower of show quality. Limited stock. **\$20.00**
- SUNCHILD** • 2 W-WY • (Crotty) • NZ M -L  
Very smooth glistening white rounded perianth, white saucer shaped frilled cup rimmed bright gold. Top show flower. Has won Premiers at Sl. Shows. **\$4.00**
- SUPREME EMPIRE** • 2 W-P • (Mitsch) • USA M  
(Sentinel x Eclat) A most unusual and spectacular flower. Very large, pure clean white perianth segments are broadly rounded and overlapping with a large fluted corona of deepest red pink lying flat against the perianth which tends to reflex. A beautiful addition to the unusual. Limited stock. **\$4.00**
- TAKAHE** • 4 Y-O • (Mitsch) • USA M -L  
One of the larger doubles with deep yellow perianth, very full centre of the same colour interspersed with bright orange petaloids. Showy and spectacular. **\$4.00**
- TASSELLDOM** • 7 Y-Y • (Crotty) 46-03 L-M  
(Limequilla O.P) This is a bright golden yellow jonquilla hybrid. Up to 3 flowers per stem. It is strongly fragrant. The perianth is flat, and is smooth in texture. The small yellow cups are even and well proportioned. This variety is the best jonquil we have yet produced at Pleasant Valley. Limited stock. **\$20.00**
- TE KAHA** • 1 Y-Y • (Irwin) • NZ E  
(Temple Gold X Seedling M . H 3/77) A medium sized flower being approx 96 mm in diameter. Te Kaha opens early in the season, and is therefore, very valuable, especially in the South Island for early shows. A golden yellow flower, it is nicely balanced, and very smooth. The perianth is overlapping, and has a tapered trumpet. Good show flower. Limited stock. **\$5.00**
- TELSTRA** • 4 Y-Y • (Crotty) • NZ (102-95) L -M  
(Spun Honey x Imperial) Nicely formed, fully double, pale flower. Outer perianth segments are a pale lemon, shading to inner petaloids, of creamy yellow. Too pale for a show flower, but a nice garden variety, having a strong stem and neck. **\$4.00**
- TERMINATOR** • 2 Y-R • (Jackson) • Aust E  
(Breeding unknown) An early flowering yellow red, with consistently good form. The bright red cylindrical cup, is 2/3 the length of the petals, and has slight frill. The broadly ovate petals, have a noticeable red flush. An excellent show flower. An invaluable flower for early shows. Has won many prizes in New Zealand. **\$6.00**
- TIGER EYE** • 2 Y-Y • (Crotty) N.Z L-M  
(Lehiam x Gold Convention) Not a huge flower, but it has lots of quality. Smooth in texture it seems to glisten. The perianth is mid yellow in colour, with the real vase shaped corona slightly darker. Altogether a most pleasing flower. One of our favourites. Limited stock. **\$25.00**
- TIRITOMBA** • 11 A Y-O • (Gerritsen & Son) • Holland M  
Round bright yellow perianth segments, with a flat bright orange collar. One of the brightest coloured flowers in this division. Has won prizes at shows. **\$4.00**
- TORU** • 8 WW • (Welch) • U.S.A Very Early  
(Unknown) A real novelty. Flowering at Pleasant Valley most years Mid June and can have as many as 19 flowers per stem, but not in our colder climate, where it produces on average about 6 flowers per stem. It opens with a white perianth and a primrose corona, but at maturity its flowers are all white. Sweetly scented with long stems. The seed of this flower was sent by its hybridizer, W R P Walsh, U.S.A, to Max Hamilton, who grew it to flowering and selected and registered it. Very large bulbs. Very limited stock. **\$15.00**

- TRIPARTITE** • 11A Y-Y • (Brook) • UK L  
The first and only multi headed split collar to date. Two to three perfectly formed clear sulphur yellow blooms per stem. An intriguing subject for floral artists. **\$4.00**
- TRIPLE CROWN** • 3 Y-Y-R • (Duncan) • Ire L  
(Sunapee x Achduart) A beautifully smooth, well formed and consistent exhibition flower of undisputed Div 3 measurement. Very smooth golden yellow perianth segments, with a small round gold corona, with a deep red rim. The overall colour effect is highlighted by a lovely moss green eye. **\$5.00**
- TRUMPET WARRIOR** • 1 YYW-WWY • (Mitsch) • USA M  
(Chiloquin x Arctic Gold) The pure white trumpet is flared with a moderate lemon ruffle at the margin. The flat spade shaped perianth segments of sharp lemon complete the stunning effect. The flower opens pure lemon. This is a top show flower and was judged Premier 1Y-W at the Daffodil World Show, Christchurch 1996. Also Champion Bloom at Timaru 1996. **\$5.00**
- TYRONE GOLD** • 1 Y-Y • (Duncan) • Ire. M  
(Golden Jewel x Midas Touch) Tyrone Gold has depth of colour, smoothness, stylish form, consistent show quality, stem, poise and plant health. A good sized golden trumpet, that looks well on the show bench. It is a plant we have a lot of time for. It has done well in New Zealand conditions. Limited Stock. **\$5.00**
- UNIQUE** • 4 W-Y • (Richardson) • UK M  
One of the largest and most impressive white and yellow doubles. A lovely round flower of ideal proportions. Regular show winner. **\$4.00**
- VALLEY BLAZE** • 2 W-R • (Crotty) • N.Z • 17-00 L-M  
(Dembele x Eclat) This is mainly a garden flower. It has a pure white, reasonably good perianth, being smooth and overlapping. The bowl shaped corona, is a deep red-pink, with a lobed edge. Good stem and neck. Its colour is outstanding. A clump of Valley Blaze can not be missed in the garden. **\$6.00**
- VALLEY FLAME** • 2 Y-O • (Crotty) • NZ (52-75) M  
Glistening broad golden yellow perianth, large expanded bowl shaped orange red cup. Showy and vigorous. **\$4.00 or 5 for \$15.00**
- VALLEY GLOW** • 2 YR • (Crotty) • NZ E  
(Milemcro x Falstaff x Checkmate) This is the best 2 YR flower we have produced. It was premier 2 YR at the South Island Show at Oamaru 1999. A large round flower, that opens early in the season. The bright yellow perianth is broad and overlapping, very smooth, and requires very little in the way of dressing. The bowl shaped corona is bright orange red with a wavy edge. It has a strong stem and neck, and most flowers are showable. Limited stock. **\$5.00**
- VALLEY LAD** • 2 Y-Y • (Crotty) • N.Z M  
(Midas Touch x Gold Convention) Reg. 2007. A good sized show flower. This variety would have to be one of our top, all yellow flowers. It is so consistent. Its perianth is mid-yellow, the corona slightly darker in tone. Smoothness personified. The funnel-shaped corona has a neatly ruffled edge. We think Valley Lad has a great future. One of our favourites. Limited stock. **\$15.00**
- VALLEY LODGE** • 2 Y-Y • (Crotty) • NZ M  
Smooth golden yellow perianth, large cup, approaching trumpet in dimension, of similar colour. Strong grower and is a good show flower. **\$4.00**
- VALLEY MOON** • 2 Y-GY • (Crotty) • NZ (84-91) E-M  
(Unknown Parentage) A most unusual, but attractive flower being a soft lemon yellow throughout. The perianth is smooth, broad and overlapping. The almost trumpet length corona is funnel shaped, with a distinct roll at the evenly ruffled edge. A strong grower with a good stem and neck. It should be a useful collection show flower, most being of show quality. **\$4.00**
- VALLEY SNOW** • 11 A W-W • (Crotty) • NZ E-M  
(Ice Crystal OP) A large flower with slightly pointed white perianth. The large flat heavily ruffled collar opens primrose yellow but fades to almost pure white on maturing and lies flat against the perianth. A good strong growing flower, useful for shows. Limited stock. **\$6.00**
- VALLEY SUN** • 2 W-Y • (Crotty) • NZ M  
(Irish Mist x Dunmurry) Medium sized flower 98 mm wide. Well rounded perianth segments are pure white. The almost trumpet length cup is of an intense golden yellow, when opening this flower tends to hood its petals, but these can be straightened with little trouble. A flower of show quality. **\$4.00**
- VIVID JOY** • 2 W-GRR • (Crotty) • (66-90) L-M  
(Debbie Joan x Picotee Witch) A very round flower of medium size. The sparkling white perianth segments are broad and overlapping, making a brilliant background for the well balanced saucer shaped corona, shading outwards from its green eye, pale reddish white, and banded by a brilliant red pink at its evenly ruffled edge. This is a lovely splash of colour, which should be a more than useful show flower. **\$4.00**
- WALDORF ASTORIA** • 4 W-P • (Duncan) • Ireland L-M  
(Pink Pageant x Passionale x Polonaise) A large, very round flower with a good back, showing a lot of peach pink corona segments which reflex to show colour to the best advantage, these are interspersed with neatly arranged white petaloids. Good stem and neck. Has won many prizes in shows. **\$6.00**
- WARBLER** • 6 Y-Y • (Mitsch) • USA E  
(B45/12 x N.Cyclamineus) The culmination of a great many crosses towards the perfect cyclamineus form, with deep yellow colour. The broad but strongly reflexed smooth perianth, of deep yellow, and a long flared crown, of slightly different colour, with a pale orange flush at the frilled margin. This is yet another of the classically formed cyclamineus. A striking flower. Limited stock. **\$6.00**
- WAYBY** • 2 YR • (Miller) • N.Z M  
(Red Ember x Dynasty) Wayby at its best is very hard to beat. The deep yellow petals are rounded and smooth, and generally free from nicks. The cup is a deep orange red with a ribbed rim. A must have flower for your show collection. Limited stock. **\$10.00**
- WHITE SWORD** • 4 W-WY • (Crotty) • NZ (68-94) L-M  
(Unknown) A very full double flower. Nice white even perianth segments, with a very full centre, of white and pale primrose petaloids. It stands up well, and seems to be a reasonable increaser. Limited Stock. **\$10.00**
- WHOA** • 2 W-GYO • (Throckmorton) • USA L  
(Kilworth x Russet) A very large flower with an enormously broad, crystalline white perianth. Large flattened cup, with olive green eye, shading to yellow green band and vermilion orange margin. Show quality. **\$4.00**
- WISP RIM** • 9 W-GYR • (Dreaver) • N.Z L  
(Unknown Breeding) Bred by Isobelle Dreaver and registered in 2001 by Ron Abernethy. This is a delightful poet. Rounded in form. It has a pure white perianth, and a small yellow disc corona, with a green eye, and a bright red rim. Very limited stock. **\$8.00**
- WINCHESTER PRIDE** • 2 W.P • (Palmer) • N.Z M  
(Barnard Castle x Dailmanach) A show flower of the highest quality. Pure white, overlapping, rounded, very smooth perianth segments, are a perfect background, to the bright pink medium length corona, with a slight roll at the rim. This flower has won many top prizes in shows. Recommended. Limited stock. **\$20.00**
- WISP RUBY** • 9 W-G YR • (Dreaver) • N.Z E-M  
This lovely little flower was formally known DP 11, until 2012 when Ron Abernethy took the time to register a few of Isobel Dreavers Poets. Pure white round petals, that are well reflexed, with a small flat disc shaped cup. The cup has a green eye, with a yellow band with a yellow rim. As the flower matures the yellow fades and the cup becomes orange red. Startling wee flower. Limited stock. **\$10.00**
- WOODLAND BEAUTY** • 3W-R • (Bloomer) • N Ireland L  
(Mahmoud x Matapan) Exceptional flower which combines a . poeticus white perianth of excellent quality with a brilliant deep red flat cup. Excellent show flower. **\$4.00 or 5 for \$15.00**
- WORLD CUP** • 2 W-Y • (Crotty) • NZ (58-98) M  
(Egmont Charm x Sunchild) Very round flower, smooth, overlapping, white perianth segments. A perfect foil, for the round expanding flat yellow, toned orange corona. Not everyone's choice, but I think it would be a useful collection class flower. Most unusual. It also has potential for breeding split coronas. Limited stock. **\$6.00**
- YEATS** • 9 W-GOO • (Robinson/Carncairn) • Ireland L  
(Como x Andrew Marvel) Very white perianth, with the green eye merging with an orange mid section and rimmed, with a darker crinkled orange band. Very striking. Limited stock. **\$4.00**
- YOUNG NICK** • 11 A YY • (Crotty) • NZ L-M  
(Gold Phantom OP) Smooth overlapping yellow perianth. The deeper coloured yellow collar is smooth and lies flat against the perianth, is nicely serrated at the edge. This is a show quality flower with a good future. Limited stock. **\$6.00**
- ZOMBIE** • 11A W.Y • (Jackson) • Aust M  
(Dolly Mollinger x 116/77) A bright attractive split corona, of such good form, that is an excellent show flower, often winning champion in its division. The bright yellow corona is evenly split to its base, and covers three-quarters of its petals. A tall striking, long lasting, consistently good show flower. Limited stock. **\$10.00**

## LARGE MIXED BULBS

**\$70.00** x 100 bulbs • **\$35.00** x 50 bulbs

These selections will include flowers of all colours, shapes and sizes.

Possibly the best selection available.

### SMALLER GRADE MIXED

Same bulbs - just smaller.

All may not flower in the first season.

**\$40.00** x 100 bulbs

### FARM PACK

500 Large mixed bulbs

500 Smaller grade mixed bulbs

Ideal for larger plantings.

**\$425.00** including postage.

Price includes postage

Please note: All mixed bulbs include postage.

However if you require Rural Delivery, please add **\$6.00**.

**Mixed White and Pink Doubles 10 for \$20.00** (Postal rates apply)

Photography by Gordon Coombes and Colin Crotty

[www.pleasantvalleydaffodils.co.nz](http://www.pleasantvalleydaffodils.co.nz)

