

JUN 2 1932

1932



Giant Leedsii "Mitylene"

M. VAN WAVEREN & SONS, INC.

101 West 31st Street

NEW YORK CITY

"Time-honored Integrity"

Crop
1931
20% Discount



Giant Leedsii "Mitylene"

M. VAN WAVEREN & SONS, INC.

101 West 31st Street

NEW YORK CITY

"Time-honored Integrity"



View of Our Bulb Farms at Nuttall, Virginia

TERMS OF SALE

Prices of all offers are quoted net, and subject to market fluctuations.

All goods are sold f. o. b. New York, except Gladiolus, Spiraea and Montbretia, which are sold f. o. b. Salisbury, Maryland, and Narcissus which are sold f. o. b. Brown's Wharf, Va. They travel for account and risk of the purchasers.

Cases and Packing together with freight, forwarding and insurance charges will be collected on delivery.

All accounts are strictly due three months after date of invoice; 3% for cash is allowed for payments within 10 days after date of invoice.

Complaints and claims about the quality of the goods cannot be entertained unless made IMMEDIATELY UPON RECEIPT of same.

We give no warranty, express or implied, and will not be in any way responsible for the results

of planting or forcing of any bulbs and roots we send out; we guarantee all varieties to be true to name and description.

Insect pests and/or plant diseases shall not be made the basis of any claim or complaint.

If at the time of shipment the purchaser has not yet settled all his last year's accounts, or if we are informed that he does not meet his obligations, the seller shall have the right to cancel all arrangements for transactions not executed.

Verbal agreements will not be considered.

Private orders are not accepted.

Orders for growing crops accepted subject to crop failure, shortage or other causes beyond our control.

All offers are made subject to being unsold.

By placing orders, buyers are considered to agree with these terms.



Rugged Health and Abundant Bloom

INTRODUCTION TO THE 1934 ISSUE

FOR your new catalogue we have described and grouped together a very reliable list of Narcissi. Our selection of varieties is based on the combined judgment of the foremost foreign critics, plus our own ideas of usefulness and beauty under American conditions.

Our descriptions aim truthfully to convey our own impressions of the esthetic value of each variety in relation to its nearest competitor or parent.

We believe that the new lower prices this year will stimulate the demand for hardy Narcissi. The public should be told that a hardy Narcissus "comes back" for several years, usually with more flowers than before. This point deserves more emphasis in sales literature.

If you will consult us before April 1st about new photographs for your catalogue, we will gladly demonstrate our helpfulness.

The largest stocks of hardy Narcissi in the United States are yours to command.

M. VAN WAVEREN & SONS, INC.

M. VAN WAVEREN & SONS, INC.

101 WEST 31st STREET, NEW YORK CITY

Bulb Growers since 1923. Over 65 years of fair dealing with the trade in the U. S. A. Not a hastily expanded business, but grown large by meritorious service and applied knowledge of the products we deal in, which come from our own expertly conducted nurseries in the United States, France and Holland, also from the best possible sources in Japan and Germany.

The contents of this catalogue are not copyrighted. Any descriptive matter, if found suitable, may freely be taken over, on the assumption that this permission will bring us some "good will" from those served by it.

AN INVITATION

Our Nurseries are situated in Gloucester County, Virginia, along one of the tidewater arms of the Chesapeake Bay, on a stretch of fertile land which Indians cultivated in the dimmest past, and where white people settled in the earliest years of the Colony. Descendants of famous families live all around us, names that adorn Virginia's most glorious pages.

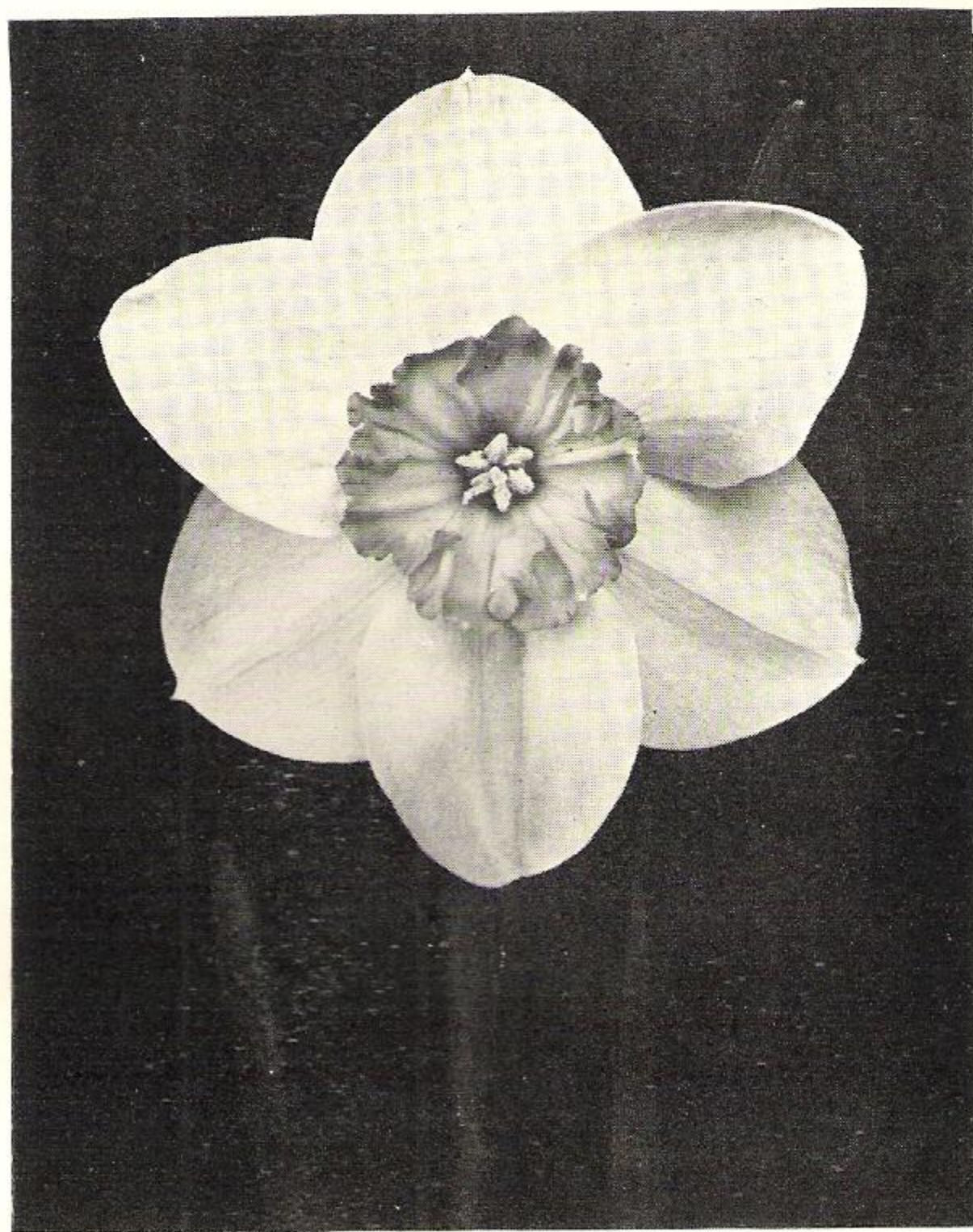
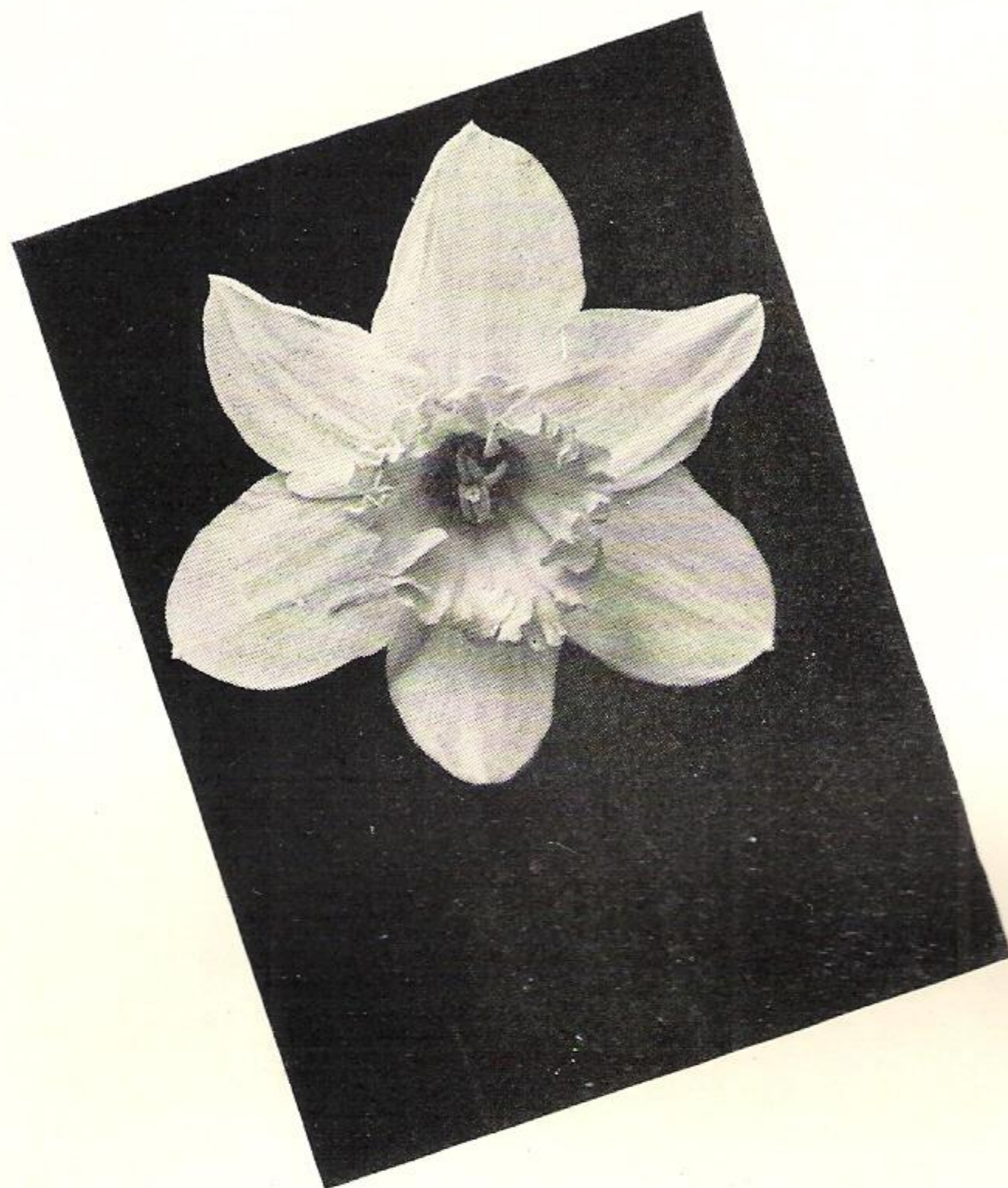
The soil is amazingly fertile. It responds bountifully to good growers' efforts. Bulbs grown in it, bloom abundantly and the red cups acquire an extra dose of color there.

Underlying our fields, at a depth of four to six feet, is a very ancient sea bottom or beach. Millions of curiously shaped shells of barnacles, clams, oysters and giant scallops are buried there, as if in one vast sleep, just as they lived. Now and then one finds a tooth or a petrified vertebra of a giant fish, evidence of the higher life of a million years ago. Even in that remote age, small pests preyed on large living organisms. Two large scallop shells, resting together, completely closed as if their owner were still inside, often display a tiny round hole, where a small enemy dramatically bored right thru that everlasting armor plate. These shell beds afford excellent drainage to our fields.

During the Narcissus flower season we exhibit daily every variety that is in bloom, permitting instructive comparisons between older and newer types.

Our Nurseries can be reached very comfortably from Old Point Comfort, Richmond and Washington over excellent hard surface roads. Inspiring scenery and historical landmarks abound all along these routes. The famous York river with Yorktown and Gloucester Point on opposite banks, is only 20 minutes away from our farms. This section of Virginia is finding favor with many wealthy people from the more Northern states. Many of the oldest mansions are repaired and renovated by new owners who strive to preserve at all costs the old delightful Colonial atmosphere.

For visitors who wish to spend a few days in our beautiful and interesting county, there is a good hotel at Gloucester Court House, and if one wishes to rest for a week or more near one of the many rivers with their incomparable views, there are homes where paying guests are really made to feel "at home." Prices run from \$20.00 to \$40.00 per week.

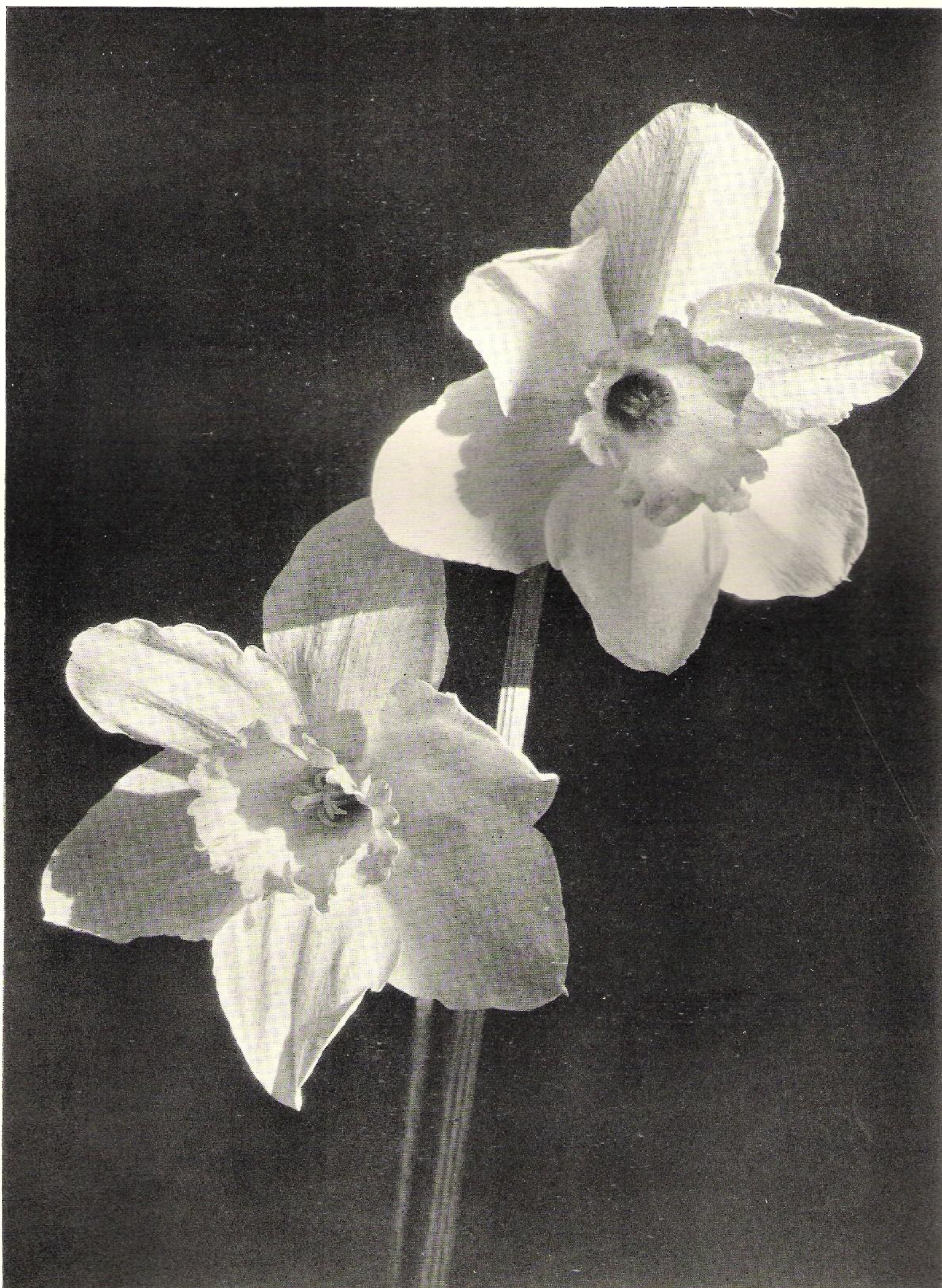


New Types in the Incomparabilis Class

NARCISSUS INCOMPARABILIS

This class contains the largest red crown varieties

| | Per 100 | Per 100 |
|---|---------|---------|
| ALCESTE. A superb bicolor in snow-white and darkest yellow. Texture like soft parchment and perfection on points of symmetry. In a class with "Her Grace"..... | \$25.00 | |
| ARGENT. Two sets of six silvery white petals and two bright yellow cups gracefully imposed upon each other in alternate rows, forming a charming open faced double Incomp. The ribbon like cups are nicely plaited and crinkled, the whole makes a lovely and friendly impression. Sturdy tall stems and foliage..... | 5.00 | |
| ARTEMIS. Ivory to pure white perianth, very substantial texture, large fluted cup of deep yellow. Good height and size. A very charming bicolor Incomp. of nice proportions. This is an early forcing variety, quite attractive in pans..... | 5.00 | |
| AUTOCRAT. Perianth and cup deep sunny yellow, pointed petals. A very free flowering excellent variety for cutting and especially valuable for mass effect in naturalized woodland plantings..... | 6.00 | |
| BERNARDINO. Perianth cream colored, the frilled and fluted cup stained deep apricot-orange at its edge. A good hardy grower which forms nice clumps in the garden in a short time. Earned several awards of merit..... | 5.50 | |
| CROESUS. Tales of gold and other riches, self sufficiency and haughty superiority. A name that lived thru the ages. "Who can surpass Croesus"? So spoke that ancient monarch at the height of his glory. And so speaks to us Narcissus "Croesus" today. A six petaled disk of pure gold proudly supports the deep red crown. What a crown! And what a stem! A plant with two or three flowers unfolded, is a sensation to behold, a real treasure in the garden..... | 13.00 | |
| DIADEME. Creamy white perianth, very broad yellow crown edged bright orange. A choice companion to Autocrat, Blood Orange and others in large plantings under trees and in "vista" landscape work. Late. Per 1,000, \$40.00..... | 5.00 | |
| DOSORIS. Round pure white perianth, flat solid tangerine red crown. As each one of these new beauties passes the revue, the biographer often pauses to find words that will adequately portray the individual character of the subject. They are so different in many details, and word pictures, necessarily limited in a wholesale catalogue, cannot do justice to all. "Dosoris" is a beauty, plant it and see for yourself..... | 13.00 | |
| FRANK MILES. One of the best of the yellow Incomps., particularly good for naturalizing. True stock very scarce..... | 6.00 | |
| | | 6.00 |
| | | 6.00 |
| | | ----- |
| | | ----- |
| | | 5.00 |
| | | ----- |
| | | 5.00 |
| | | ----- |
| | | 45.00 |
| | | 15.00 |
| | | ----- |



LEEDSII, SOUTHERN GEM (see page 11)
Character and roguish informality combined.

INCOMPARABILIS

(Continued)

| | Per 100 |
|--|---------|
| RED STAR. White wavy perianth, unusually long red cup, much superior to Lucifer, but very late. One of the jeweled sights of the garden | 15.00 |
| SIR WATKIN. Pale sulphur perianth, deep yellow cup, double-nosed bulbs | 6.00 |
| Round bulbs | 4.00 |
| WHITEWELL. One of the very best of the bi-color Incomps. Petals pure creamy white, bold open crown of that strong yellow which is a near approach to orange. Excellent size and texture. A friendly substantial flower, slightly facing upwards from 18 inch stems. Recommended for bowls and shallow bulb pans. Attractive garden variety. Per 1,000 \$60.00 | 7.00 |
| WILL SCARLETT. A rather informal cream colored perianth supporting a fine cup, exquisitely frilled, of wonderful orange scarlet. Splendid for the garden because it holds its color nicely and is persistently hardy. Very late | 9.00 |

BARRII

This group comprises the most brilliant red crowns

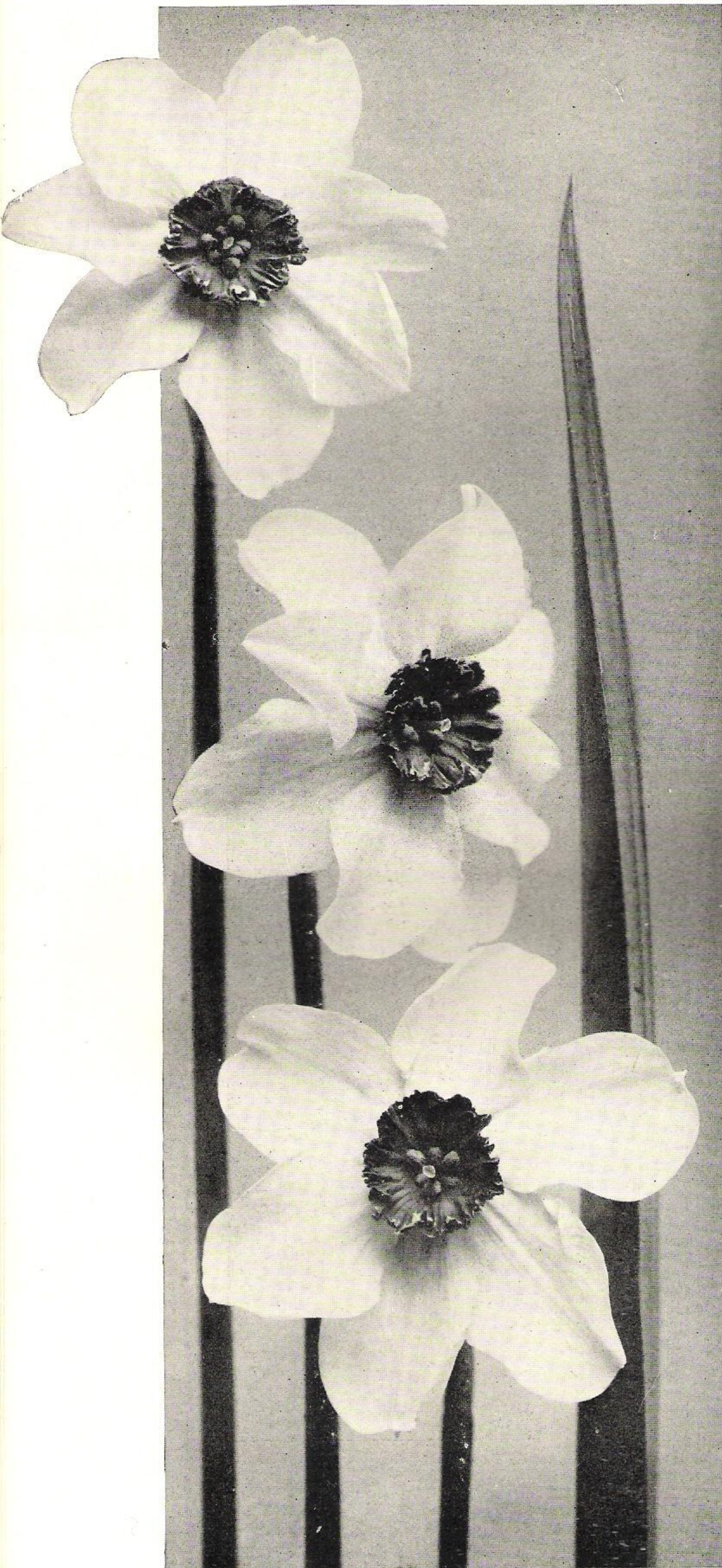
| | Per 100 |
|--|---------|
| ALBATROSS. White perianth, pale lemon cup with finely frilled edge of glowing orange red, very charming | \$ 5.00 |
| BATH'S FLAME. Yellow perianth, deep yellow cup with broad edge of orange red. The petals are very long, giving the flower a distinct and outstanding character. A perfection in scarlet and gold. Long stems. Floriferous | 7.00 |
| BLOOD ORANGE. Lemon petals with vivid orange scarlet eye; sometimes called a yellow Poeticus, but much brighter than any flower of that class | 4.00 |
| BONFIRE. One of those that carve a deep impression on the mind. Long ivory colored petals, overlapping, surround a glowing orange scarlet cup of great beauty. A decided freshness like that of newly formed cream characterizes the petals, while the deep color of the cup dazzles the eye. It is probably this alternating impression of purity and of fire which holds us so spell-bound. Long stems, very free flowering | 10.00 |
| BRILLIANCY. A grand flower with luminous golden yellow perianth, very large cup edged deepest scarlet | 13.00 |
| COEUR DE LION. Fine primrose perianth, nicely overlapping, bright orange-red cup which retains its intensity for a long time. Height 16 inches. Midseason to late. Only 100 bulbs | 16.00 |
| CONSPICUUS. Perianth yellow, broad short cup edged orange scarlet, an old reliable variety for naturalizing, free flowering. Fine color plate upon request. Per 1,000 \$40.00 | 4.50 |
| Round bulbs, per 1,000 \$30.00 | 3.50 |

BARRII (Continued)

| | Per 100 |
|--|---------|
| EARLY SURPRISE. Bright yellow base, scarlet rimmed cup of over $\frac{3}{4}$ inch width resting against a field of snow white petalage. A flower of solid heavy texture that can stand a jolt or two without fading. Much earlier than Lady Moore. Both very fine | 8.00 |
| FIREBRAND. The combination of creamy white petals and glowing red fluted cups really suggests live bits of coal resting on sheer inflammable material. A small flower when compared to the latest introductions, but not inferior to any of the most expensive in brilliancy. Very free flowering when established a year or more. We have picked seven flowers from a two year old plant. Fine color plate upon request. Per 1,000 \$40.00 | 5.00 |
| FIRETAIL. Creamy white perianth, broad and of firm texture, flat crown of brilliant crimson scarlet. Stems eighteen inches tall, flowers face forward. Received first class certificate R. H. S. 1922. Stocks small, closely held because this is recognized as an outstanding leader of the red crowned, white petaled family. Exquisite color plate with every order; rather late | 25.00 |
| KING GEORGE V. White perianth, cup yellow with very fine scarlet edge, sometimes classed as a giant Poeticus variety | 15.00 |
| LADY GODIVA. White perianth, broad yellow cup with bright orange scarlet edge, fine charming variety | 9.00 |
| LADY MOORE. Snow white perianth, yellow cup with deep orange edge. A substantial flower which stands bunching for market. Good stems, bulbs very free-flowering and easy to force. Also an effective garden variety | 8.00 |
| MASTERPIECE. Creamy white rounded perianth, flattened crown heavily stained orange scarlet. About 23 inches in height with flowers posing well above the foliage. A variety worthy of its name | 9.00 |
| PEVERILL. A companion variety to Blood Orange but with snow-white perianth. The cup is just as intensely orange red, a wonderfully free flowering and reliable forcing variety. The day will come when these attractive red cups bring better prices in the flower stores than the trumpet Narcissus. While the masses are still buying "the big ones" there are increasing numbers of educated folks who prefer grace, elegance and daintiness to bulk and boldness in flowers. Still scarce. Strong bulbs | 5.00 |
| RED BEACON. Ivory white perianth, brilliant orange scarlet cup. Later than Red Chief but superior in form and color | 6.00 |
| RED CHIEF. White, bold flat cup with broad band of bright crimson scarlet, first class exhibition variety. See beautiful halftone page 8 | 5.00 |



NARCISSUS LEEDSII, HER GRACE (see page 11)
Showing the fine perianth and the carvings at the crown's edge.



BARRII, RED CHIEF

BARRII (Continued)

- Per 100
- RED GUARD.** We draw particular attention to the fact that this variety displays a decided copper apricot tint in the perianth, an important advance towards the all-orange Daffodil. The form and the texture of the petals is all that can be desired and they overlap perfectly. The cup is a magnificent solid blazing orange red. An additional value is found in its habit of frequently producing two flowers to a 20 inch stem. We who see so many beautiful kinds, observe the glorious metamorphosis of "Red Guard", from bud to full blown bloom, with ever renewed ecstasy. Each \$18.00
- SEA GULL.** Large spreading pure white perianth, cup canary yellow edged apricot; very charming 5.00
- SUNRISE.** White with primrose bar down the center of each petal, large open crown of orange yellow with scarlet margin, a decidedly new color arrangement that is peculiarly attractive 13.00
- WATCHFIRE.** Pale sulphur poeticus perianth, dark orange cup; exquisite novelty. A Chinese red cup set on a saucer of new gold 13.00

LEEDSII

We present a very beautiful collection of this type

- Per 100
- ALBINIA.** (Syn. White Slave.) Much like White Lady, but a broader more heavily crinkled cup. At comparative exhibitions it outpoints White Lady in every respect. Not as fast a propagator. As happens so often in such cases, the faster grower gets the popularity although its other qualities may be less than its slower sister \$ 4.50
- BIANCA.** A late blooming form of Evangeline. While there is much similarity in the blooms of some varieties, still, in making up collections for drifts in woodlands the importance of early, midseason or late flowering must not be overlooked. To lengthen the period of blooming by two or three weeks adds much value to such plantings 4.00
- CRYSTAL QUEEN.** Pure white perianth, pale primrose cup passing to clear paperwhite afterwards. Flowers normally 3½ inches across, but we have picked dozens that reached 4 inches. Long stems. Opinions differ, fortunately, about the merits of the various straight cupped Giant Leedsii like Lord Kitchener, Sirdar and White Colossus, but to us, taking size of bloom, form, color, length of stem and health into consideration, Crystal Queen is the "Magnificentissimus" of that price group. It faces forward, even slightly upwards when in full bloom and is usually present at the big shows in the prize winning entries; strong bulbs 9.00
- DIANA.** Flaring white petalage, informally twisted, large flat lemon yellow cup with finely crinkled edge. Very long strong stems. Unusually floriferous 8.00

(Continued on page 11)



NARCISSUS LEEDSII, CRYSTAL QUEEN (see page 8)

The "Magnificentissimus" of the Giant Leedsii.



NARCISSUS, WHITEWELL (see page 6)
The durability of the texture, the glitter of the cup.

LEEDSII (Continued)

EVANGELINE. A delightful citron yellow cup resting on a firm rounded pure white perianth, stems 20 inches. Free bloomer. Not new but still rated as one of the very best all-purpose varieties. Produces 4 to 8 flower-stems the second and third year and therefore almost indispensable along woodsy paths and in open spaces between trees. Per 1,000 \$35.00..... 4.00

HER GRACE. Our half-tone shows the beautiful overlapping snow white perianth with the large cool ivory crown resting firmly against it. Its prominent characteristic is the exquisite carving of the crown's edge, as can be seen clearly, but the camera failed to register the delicate related tints of cream color and ivory which play in the texture of the lacey ruffles of the brim. A strong grower, making large bulbs and large broad foliage. The flower has much substance and the entire plant is of exhibition quality. Strong bulbs..... 30.00

LORD KITCHENER. Pure white perianth, very broad and flat, of heavy texture, crown pale primrose, wide open. A fluted carving of fine ivory 12.00

MITYLENE. See Mrs. Peckham's comments on this variety, in opposite column. Each \$4.00.....

MRS. LANGTRY. White, very satisfactory variety for naturalizing..... 3.00

PHYLLIDA. A giant Leedsii, pure white with pale primrose cup, one of the newest seedlings out. Correct to the last degree..... 30.00

PIXIE. Perianth sulphur white, weather resistant to the highest degree, large flat eye, canary yellow with sharply defined edge of bright orange red. Very attractive and unusual. Each \$0.75 0.75

QUEEN OF THE NORTH. Broad overlapping white segments, pale primrose cup with finely crinkled edges. A little different from White Lady and much better for naturalizing as it is dwarfer and has stronger stems. Produces flowers in great abundance when established. Per 1,000 \$40.00..... 5.00

SIRDAR. Pale sulphur perianth, large soft primrose cup, entire flower of unusually heavy texture, strong stems..... 16.00

SOUTHERN GEM. Pure white petals, large lemon yellow crown turning cream colored within a few days. Of splendid size and texture, this flower suggests a roguish informality both in the flare of the petals and in the wide serrated brim of the crown. The camera has caught that spirit of gaiety expressed by Southern Gem, as you will immediately perceive on page 5. Once established in the garden it produces 4 to 8 flowers the second and third year, therefore, it is a reputation builder for the seedsman who sells it. Being very free-flowering and easy to force, a few bulbs in a shallow 5 inch pan make a handsome showing. This and Whitewell are two varieties that do not absolutely require deep pots like most other Narcissus. Strong bulbs \$60.00 per 1,000..... 7.00

TENEDOS. A rival of "Mitylene." The flowers will reach 5 inches across, they rest on 24 inch stems. Opens pale primrose in the cup and turns glistening white when in its prime. Much beloved abroad. Each \$3.00.....

WHITE LADY. White, pale canary cup with a delicate perfume. A flower not unlike a small Eucharis Amazonica; extremely hardy and free flowering. About 22 inches in height. Once established it never gives up, supplying more flowers every year. When the breezes gently stir the flowers on our fields, the rows of White Lady look like ripples on a sea of liquid silver. Per 1,000 \$30.00..... 4.00
Round bulbs, per 1,000 \$20.00..... 3.00

COLOR PLATES

Of many Narcissus varieties we can furnish exquisite modern color plates for framing or for placing under the glass on the counters. They are a distinct help to sales efforts. The price is 20 cents each, but we gladly furnish a selection free upon request to cover varieties ordered from us.

AN OUTSTANDING DAFFODIL

In "Horticulture," Mrs. Ethel Anson S. Peckham says:

"To have seen **Narcissus Leedsii Mitylene** is to covet it. This lovely tall, enormous-flowered Leedsii has a snowy-white, round perianth of perfect shape and fine substance and the effect is to look you in the eye. No shy hanging of head here and yet nothing bold or coarse in its glance! The cup is of the very palest lemon yellow, very flat and curved up slightly like a shallow saucer with little ridges in it. As the flower is so large, it is fortunate that the stem is a long and a strong one, and, as the foliage is good, it seems as if this variety would be a vigorous grower.

"Mitylene is a seedling of Beacon and was raised by the Rev. G. H. Engleheart, who has been responsible for so many fine varieties of Narcissus, many of them deservedly popular and generally attractively named. Awards of merit for show purposes were given this variety at the Midland Show in 1925 and in London in 1926 and 1927. Evangeline, a well-known and standard Leedsii variety and a good one, not to be despised in this country, looks like a star of the fourth magnitude beside the harvest-moon Mitylene."



NARC. STELLA POLARIS (THE FIRST) see page 13

Decidedly different, white and yellow.

NARCISSUS MULTIFLORA

Under this arbitrary classification we list only two varieties for the present. We placed them under Incomparabilis last year but as they produce from 2 to 5 flowers per stem, they would fit better under Poetaz, were it not for the fact that the florets are so large that there is no comparison with the usual Poetaz varieties.

| | Per 100 | | Per 100 |
|--|---------|--|---------|
| STELLA POLARIS. In color, size and form it suggests Sir Watkin unmistakably, also in length of stem and foliage. Sir Watkin probably was one of the parents and a Poetaz for the other, as it has the latter's mild perfume. Produces 3 to 5 handsome flowers per stem. When Mr. Louis Dupuy of Whitestone, L. I., picked a dozen stems on our fields he thought it the best flower value per dozen stems he had ever seen. Individual stems very long..... | 10.00 | FAIR ALICE (GOLD ELSE). Evidently the result of crossing a yellow Incomp. with a yellow Poetaz variety. It produces from 3 to 5 flowers per stem. The size and color are on the order of Incomp. Homespun but with a longer crown, and the mild perfume of the Poetaz. The bulb is large with a smooth skin, healthy under all conditions and propagates rapidly. Recommended for pans..... | 10.00 |

POETAZ VARIETIES

| | Per 100 | | Per 100 |
|--|---------|---|---------|
| ADMIRATION. This beautiful cluster-flowered daffodil is especially lovely in full sunlight, as it has a transparent character, but the flowers viewed in shade do not look poor or papery. The perianth, which is a sulphur yellow, seems rather to be of the quality of the soft, taffeta silk which, in the old days, was known as "sarsenet," and the petals are slightly ridged lengthwise. The corona is of rich orange scarlet and there are usually about six flowers to a stalk | \$16.00 | GRACE FORBES. In Poetaz varieties occur the loosely built type and the broad petaled broad crowned type. The latter produce much more effect in the garden. They give more color value for money expended than the other type. Grace Forbes has pure white petals, heavily crinkled yellow cups with orange shading towards the edges. When in bloom a few days a distinct white line divides the yellow and orange color, an interesting feature. Good for late February forcing. Strong bulbs .. | 7.50 |
| ASPASIA. Far superior to Elvira. It has more florets per stem and the perianth is purer white, also larger than Elvira. For forcing Aspasia is greatly to be preferred. There are larger stocks of Elvira than of Aspasia although these varieties are of about the same age, but Elvira is a more rapid propagator and therefore more profitable to the grower. We have worked up a wonderfully vigorous stock of Aspasia because of its superior character. Note the exquisite form and purity expressed in the camera reproduction on page 16. \$45.00 per 1,000 strong bulbs..... | 5.00 | HELIOS. Creamy yellow, pure yellow cups, fine, very floriferous and excellent cutflower variety. It is early and has strong stems with 5 to 8 large florets. This variety was a favorite in the New York and Boston markets before the quarantine. We can again offer these bulbs at pre-quarantine price, having succeeded in working up a strong stock in Virginia, per 1,000 \$55.00 | 6.00 |
| CHEERFULNESS. Double white Poetaz hybrid, 3 to 4 large flowers on a strong stem. While the general effect of the coloring is white, there is a suggestion of pale yellow at the base of the petals which seems to give character to the entire flower. It certainly stands out as one of the best and most charming introductions of recent years. A wonderful show variety, and proven hardy in New England. Beautiful color plate with every order upon request | 9.00 | JOCONDE. Pale yellow petals, deep golden cups, 4-5 large flowers on long stems, ideal cutflower and exquisite show variety..... | 10.00 |
| EARLY PERFECTION. An improved Elvira, handsomest of all the white and yellow Poetaz varieties; can be forced to bloom early in January | 8.00 | LA FIANCEE. Exceptionally free flowering. Snow white guards joined into a perfectly smooth circle, very deep golden yellow crowns. Highly recommended for its early easy forcing and splendid effect. 5-7 florets carried on strong stems, well above the foliage. Each \$0.50 | 45.00 |
| ELVIRA. Pure white, yellow eyes, 3-4 large flowers per stem, fine for midseason forcing, per 1,000 \$30.00..... | 4.00 | LAURENS KOSTER. Pure white, orange yellow cups, 5-7 blooms per stem, popular florist variety, per 1,000 \$30.00..... | 4.00 |
| | | MIGNON. White, sharply contrasted by the bright orange scarlet edge of the cups, 4-5 florets per stem; a very striking variety..... | 13.00 |



NARC. POETAZ, CHEERFULNESS (see page 13)

POETAZ VARIETIES

(Continued)

| | Per 100 | | Per 100 |
|--|---------|---|---------|
| ORANGE CUP. Creamy white, conspicuous orange cups, a most delightful color combination of plastic rubies floating on sulphur pools, 6-8 florets and usually 2 stems per bulb. Keeps its color in bright sunlight positions..... | 5.00 | eye. Four to five of these attractive flowers on each stem. Something new for the shows. Height about 18 inches..... | 40.00 |
| SCARLET GEM. This is "Admiration" stepped up. Beautiful deep yellow with solid dark red | | SOLEIL BRILLANT. A fine, perfectly hardy form of the famous Soleil d'Or. Bright yellow petals and deep orange cups, from 8 to 15 on a stem. It is 4 to 5 inches shorter than Soleil d'Or and can therefore be used to perfection for pans for Easter and earlier as it produces big clusters of color, just above the foliage and sells at sight. We are happy to introduce this lasting variety which will delight everyone in the garden and in the greenhouse. Because of its hardiness it is properly placed in the Poetaz class, but it is so clearly an offspring of Soleil d'Or that it can safely also be called a Polyanthus..... | 8.00 |

The Narcissus family now contains varieties that can **not** be forgotten, even if seen only once. They are unavoidably remembered for their attention-compelling beauty. We instantly recall "Whistler" for great size and symmetry, "Croesus" for superb harmony in gold and red, "Bonfire" for contrast of purity and fire, "Primrose Phoenix" for its mass of pure primrose petals.

We can usually supply round bulbs of Poetaz varieties at 20% below catalogue prices.

POLYANTHUS VARIETIES

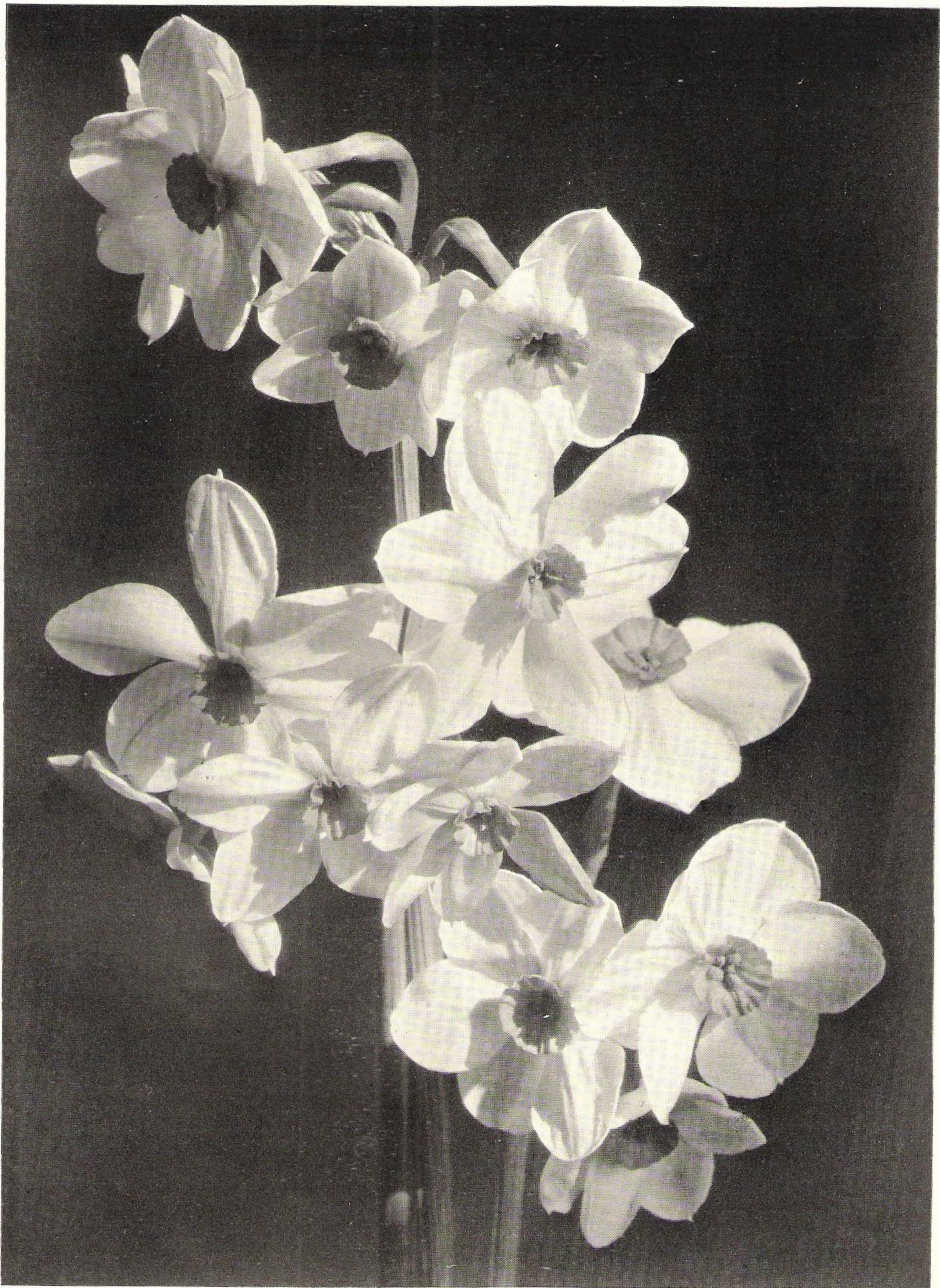
| | Per 1000 | | Per 1000 |
|--|----------|--|----------|
| SOLEIL D'OR. Our Virginia grown Soleil d'Or are the true French dark yellow type with deep orange cup. The bulbs are not as large as those grown further South, nor can they be forced as early. For early work the Florida and California grown stocks are certainly to be preferred and the price paid for them may be entirely justified. For midseason and later forcing however, we recommend our Virginia grown bulbs, which will give a splendid account of themselves in dollars and cents. | | SOLEIL BRILLANT. (Polyanthus X. Poetaz.) We discovered this variety only four years ago. Or, to be more exact, we discovered its usefulness as an exhibition and Easter trade variety. Much sturdier than Soleil d'Or, better stems, 5 inches shorter in growth, standing up splendidly under all conditions. Same bright colors, fragrance much more subdued than that of Soleil d'Or, and the florets are larger. | |
| 13 c. M. and up..... | \$60.00 | per 100 \$8.00..... | 75.00 |
| Southern Grown bulbs, 14 c. M. up..... | 75.00 | PAPERWHITE GRANDIFLORA. True | |
| Southern Grown bulbs, 15 c. M. up..... | 90.00 | Southern grown stock, 13 c. M. and up..... | 25.00 |
| | | 14 c. M. and up..... | 35.00 |

POETICUS

(Poet's Narcissus)

| | Per 100 | | Per 100 |
|--|---------|---|---------|
| BIFLORUS. Parkinson called this the "Primrose Peerless Daffodil". It is found wild in the Tyrol. "Twin Poeticus" and "Twin Sisters" are other names for it, because it invariably blooms with two florets to each stem. Petals cream, sulphur cups. Exceptionally sweet fragrance, much milder than Poeticus. Blooms when all the other types are over..... | \$ 3.50 | HORACE. Pure white perianth, conspicuous red eye, free flowering and strong stemmed, a splendid forcing variety. This and Thelma are the two most outstanding Poets, per 1,000 \$40.00..... | 4.50 |
| CASSANDRA. Immaculate white perianth, dark red rimmed crown, fine..... | 6.00 | JULIET. Pure white, fine cup margined scarlet. Poets require more room in the flats than the bulbs indicate, they need more light, more water, more air and less heat when grown under glass than most other Narcissus. Cut only when just fully opened. Color, stamina and perfume develop during the last few hours while the petals stretch and straighten out..... | 6.00 |
| GLORY OF LISSE. A fine Poeticus for forcing, much better than Ornatus. This and Horace are the best florist cutflower varieties. Not as bright eyed as Horace but a little earlier and therefore very valuable for the early market, per 1,000 \$45.00..... | 5.00 | | |

(Continued on page 17)



POETAZ, ASPASIA (see page 13)

Clothed with conscious elegance.

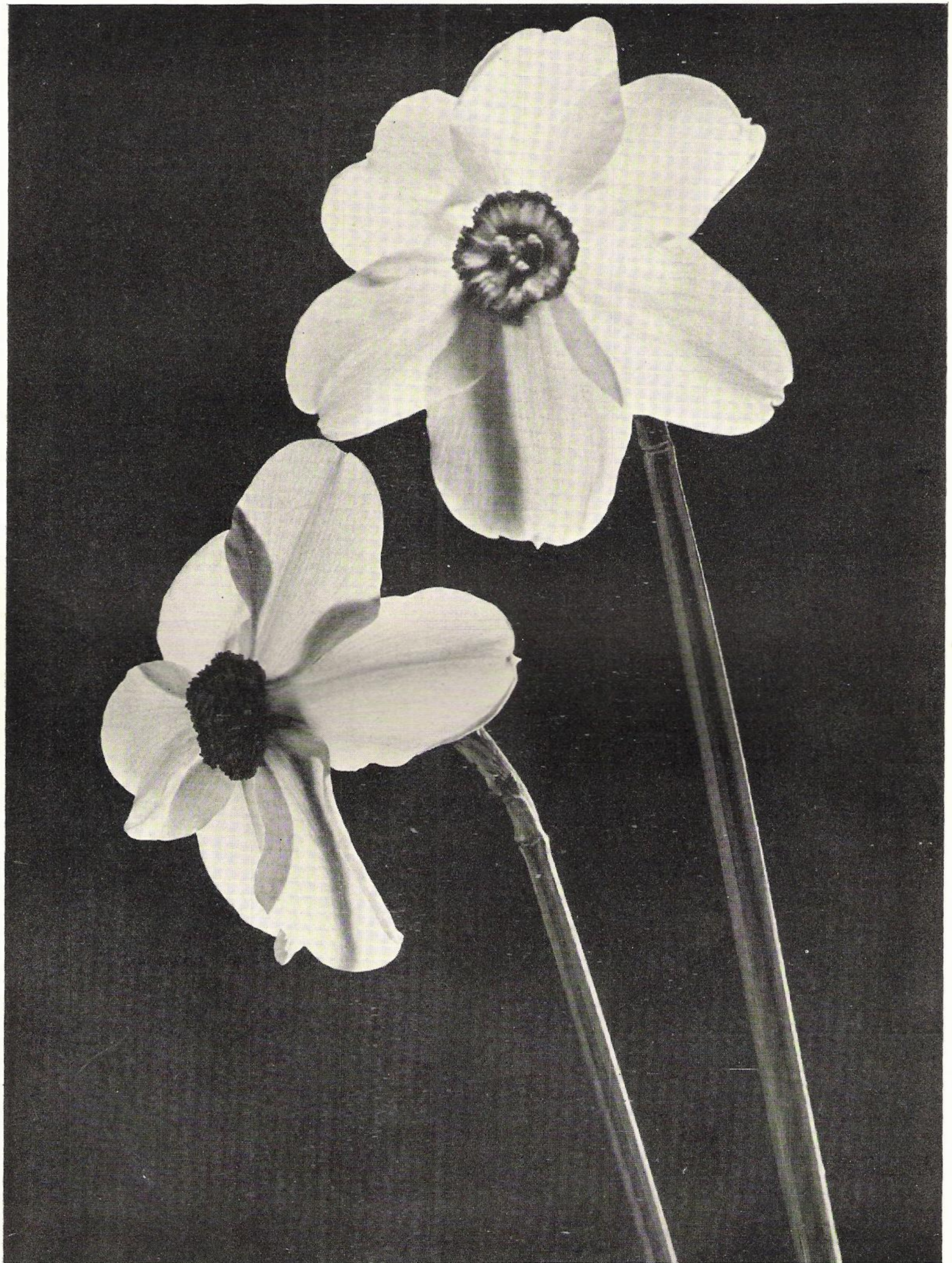
POETICUS (Continued)

| | | | |
|---|-------------------------|--|-------------------------|
| <p>LAUREATE. One of the largest Poets, petals quite fleshy and nicely over-lapping, cup broadly edged deep crimson scarlet. A little later than Horace and not quite so tall. We would place this with the outdoor show flowers, per 1,000 \$50.00.....</p> | <p>Per 100 6.00</p> | <p>RECURVUS. Pliny and Virgil called this species "Narcissus Purpureus", probably on account of the red edge of the cup. Dioscorides, the great Roman physician, described it as "Bulbos Vomitos" because he was more interested in the medical properties of the bulbs than in the flowers. The English call it "Pheasant's Eye", the French "Narcisse des Poetes." Its beauty and perfume still charm many gardens all over the civilized world. It is one of our hardiest Narcissus, persisting cheerfully where all kinds give up. It is the parent of many beautiful hybrids, each valuable on some particular point, but none of them possessing to the same degree that useful quality of persistent hardiness which characterizes the old Recurvus. Per 1,000 \$25.00....</p> | <p>Per 100 3.00</p> |
| <p>ORNATUS. White, cup margined red. Quite popular in America, but millions upon millions of it are forced in England although none of the Poets will force real well, even including Ornatus which with Glory of Lisse is one of the earliest. The usual massing in flats, for forcing, does not improve matters at all. Yet, the Poets are good sellers, fine for all kinds of decorative work. If given some space in the flats, and not hurried along too much, hardened off in a cool house, they pay big dividends on money invested. Per 1,000 \$30.00.....</p> | <p>4.00</p> | <p>THELMA. Snow white perianth, petals overlapping, cup light yellow edged bright crimson, a noble flower and consistent prize winner at the shows. Has a fascinating perfume.....</p> | <p>7.00</p> |

Round bulbs of the above Poeticus varieties at 20% below printed catalogue prices.

THE DOUBLE VARIETIES

| | | | |
|---|-------------------------------------|--|-------------------------|
| <p>ALBO PLENO ODORATO. Pure white, beautiful, with the delightful fragrance of orange blossoms. Strong stems. Blooms very late and seems to prefer a cool soil and semi-shaded position. In some situations the buds blast every year or the flowers come single, then again whole patches can be found near old homesteads in New York and Connecticut which produce masses of excellent double flowers every season. Per 1,000 \$40.00.....</p> | <p>Per 100 \$ 5.00 4.00</p> | <p>ARGENT. Alternate rows of pure yellow and larger pure white petals. A long stemmed double flower of very graceful form. Open faced and friendly looking. The texture of the white petals glistens as if dusted with silver. Free-flowering midseason bloomer.....</p> | <p>Per 100 5.00</p> |
| <p>APRICOT PHOENIX. Quoted at \$50.00 per bulb in 1910. About half of the petals are lovely apricot with yellow undertone, the other half are cool ivory white. This exquisite and exceedingly interesting variety contributes its share to the public interest in the newer and better double types. Each \$0.40.....</p> | <p>35.00</p> | <p>AURANTIUS PLENUS. The true old English "Butter and Eggs". Long petalage has the color of May-butter, short petals deeper yellow with orange "nuance". Fragrant. Good long stems for cutting.....</p> | <p>5.00</p> |
| <p>Some people claim and some believe that heavier bulbs than those grown in Virginia would be more desirable. Our own plantings and experiments disprove that claim. Our Virginia grown Narcissus are a little lighter than Holland grown bulbs but they contain more solids and more flowerbuds. They are more economical to handle because they contain less water. Planted side by side outdoors there is no difference in foliage and flowers, except more flowers from Virginia bulbs. Under forcing tests, Virginia bulbs bloom ten days to two weeks earlier, and again, more flowers.</p> | | <p>FEU DE JOIE. Another pattern in pure white and brilliant orange scarlet. Not as full double as "Mary Copeland", which, to some people, means less emphasis on size and greater refinement and grace. Tall stems and opens early. Each \$6.00.....</p> | <p>-----</p> |
| | | <p>MARY COPELAND. Creamy white with deep orange center. One of the handsomest flowers in all the Narcissus family. Very late, each \$6.00.....</p> | <p>-----</p> |
| | | <p>ORANGE PHOENIX. Double flowers made up of rows of snow white petals which seem to be held in place by lacy ribbons of bright orange. An old variety with attractive qualities for the garden and for table decoration. True pure stock is now quite scarce. We are fortunately in possession of a splendid pure strain, per 1,000 \$50.00.....</p> | <p>6.00</p> |
| | | <p>Round bulbs, per 1,000 \$40.00.....</p> | <p>5.00</p> |



THE BEST OF THE POET VARIETIES,
THELMA.

THE DOUBLE VARIETIES

(Continued)

| | Per 100 |
|--|---------|
| PRIMROSE PHOENIX. Primrose yellow, large rose-shaped flower, long stems. We recommend this variety as a more satisfactory double form than Double von Sion, which, under American conditions, sometimes acquires an ugly green color. Per 1,000 \$60.00..... | 7.00 |
| Round bulbs, per 1,000 \$50.00..... | 6.00 |
| SILVER ROSE. A lovely double Leedsii presenting a primrose rosette, interspersed with almond shaped broad white petals. Medium height, about 17 inches, late blooming. Rare. Each \$0.30 | |
| SULPHUR PHOENIX. Identical with Orange Phoenix except that the interlacing is pale yellow passing to white. When full blown this makes a scintillating snow white flower of splendid form and size. On that account it is often called SILVER PHOENIX, per 1,000 \$50.00 | 6.00 |
| Round bulbs, per 1,000 \$40.00..... | 5.00 |
| THE PEARL. A dwarf little mite with much character. The silvery perianth protects a neatly formed center of prettily curved wavy petals of campenel color. About 10 inches high. One has to bend down in the nursery to appreciate its value, but placed in a rockery pocket at eye level or a little lower "it speaks its piece with eloquence."..... | 8.00 |
| TWINK. White flushed pale primrose, center brilliant orange. Quite early. This recent introduction is making rapid strides towards general recognition as a first class variety for all purposes. Each \$2.00..... | |
| VON SION (Telemonius plenus). Short stemmed, double yellow forcing variety. In great favor for Easter pans. If double varieties are used for forcing they must be kept cooler at first than single Narcissi. When the fat buds are well out of the necks, more heat can be applied, and more water by all means. Doubles must be given much more moisture than single kinds, otherwise blasted buds will surely result. This goes for Von Sion as well as for the magnificent Primrose Phoenix. | |
| Double-nosed bulbs, per 1,000 \$60.00..... | 7.00 |
| Round bulbs, per 1,000 \$40.00..... | 5.00 |

THE BALANCE OF NATURE

On some of the oldest copper engravings of Narcissus plants one can find fairly accurate pictures of the large and of the small Narcissus fly. Already early in the seventeenth century these flies must have been recognized as insect companions of these bulbs. They are relatively harmless and easily controlled by the alert grower.

The much discussed Tylenchus Dipsacii is a nematode now found to be widely prevalent in the United States on many host plants, as well as on Narcissi. In fact, there is much evidence that this particular Tylenchus has existed here a long time, but has only acquired its taste for cultivated Narcissi in the last thirty years. It does not appear to be active on established clumps or on Narcissi grown without fertilizer in grassy plots and meadows. Yet these same bulbs taken up and planted in nursery rows under clean cultivation on well fertilized land, may promptly show a heavy infestation in its most malignant aspect.

Practically all Narcissus growers in the United States now realize that infiltration of Tylenchus into their cultivated Narcissus stocks is inevitable. Infection may occur at any time in very many ways, including burrowing rodents and quail, pheasants and rabbits that run from place to place. Neither the severest inspection service, nor the most careful grower can give an absolute guarantee today that any given stock of Narcissus is 100% free from Tylenchus. In this light it may be recalled that in 1923 at a hearing in Washington, D. C., the Holland growers were asked for such a guarantee and that, although facing the loss of an important market for their product, they courageously declined. They knew that this demand could not be met and the Dutch growers, in that instance, acted in accordance with the best traditions of their nation.

PROGRESS

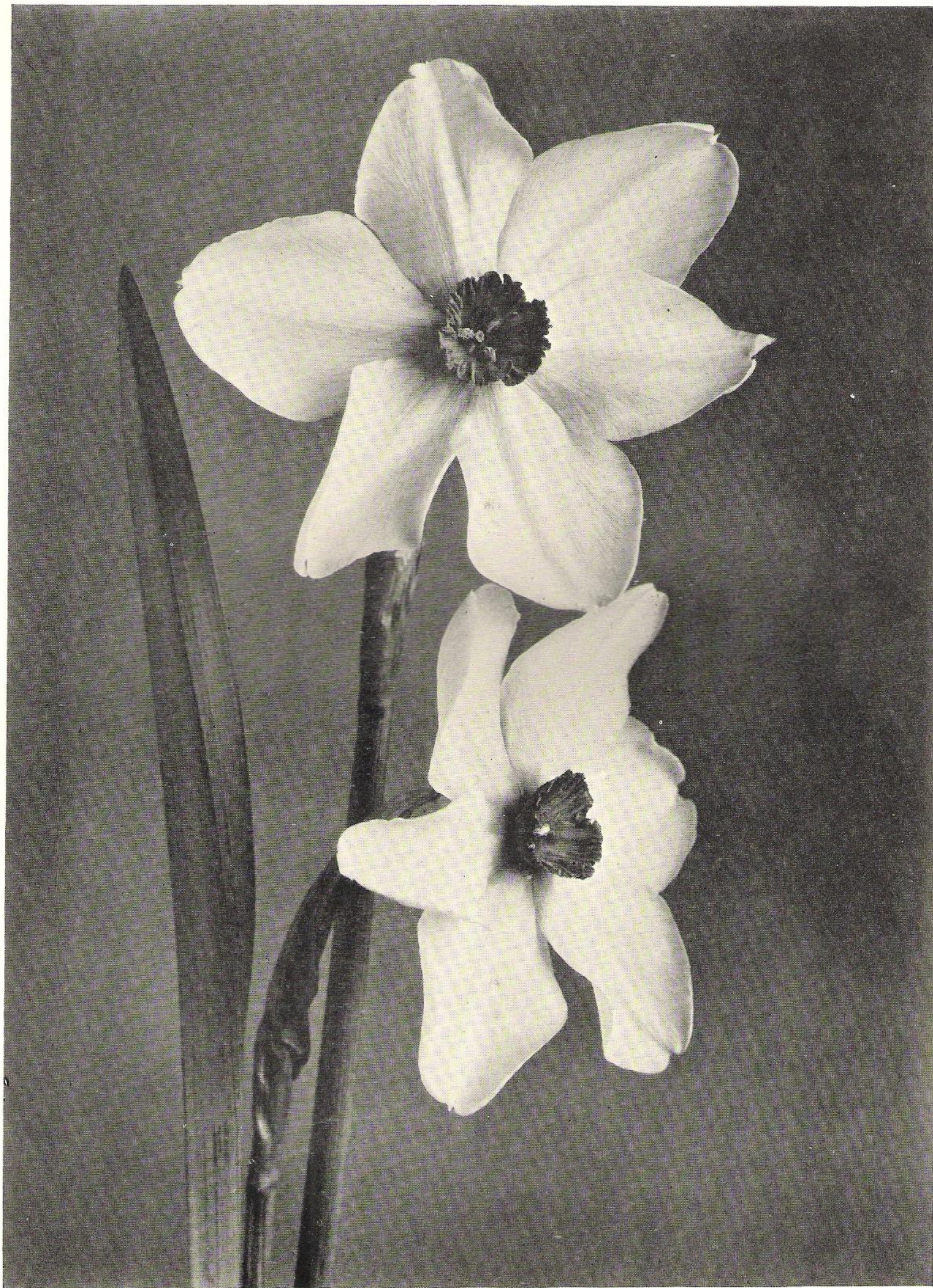
The new **white** Daffodils are especially suitable for American conditions. Our gardens are usually blessed with much sunshine in the Spring, in which these white varieties seem to revel, and which undoubtedly increases their purity and their substance. They have a mystic luminosity, a spiritual loveliness, which becomes all the more evident when the light of day slowly fades. The living purity of their perianths, the entrancing variations of palest primrose, ivory and cool white in their cups and trumpets, the outline of their youthful delicate grace, appeals to our highest emotions.

Those favored persons who decide to secure bulbs of these magnificent new creations, will find that they have made an astonishingly profitable investment, for at small cost they will have acquired the inspired masterpieces from the greatest hybridizers' workshops.

Mrs. E. H. Krelage
Tenedos
Her Grace

Beersheba
Triandrus Thalia
Cheerfulness

Mitylene
Southern Gem
Silver Rose



NARCISSUS, POETICUS BONFIRE
Caught in the act of unfurling its perfect petals.



M. VAN WAVEREN & SONS, INC.

101 West 31st Street, New York City

NARCISSUS, FAIR ALICE (Gold Else), see page 13
Each cup a fountain of delightful fragrance.

THE JONQUILS AND CAMPERNELS

| | Per 100 | | Per 100 |
|---|---------|---|---------|
| SINGLE JONQUIL. We take pleasure in presenting a speaking likeness, (on page 26) of <i>Jonquilla Simplex</i> or sweet scented Jonquil, the original true Jonquil of ancient history. This graceful species is native of Southern France. Its perfume calls one to the spot where it raises its lovely clusters of 3 to 8 golden yellow florets. No other flower, except perhaps the violet, adds such delightful fragrance to the spring garden. It is hardy everywhere and has pretty "rush"-like foliage. Campernels are often furnished instead of the true <i>Jonquilla</i> but this is unnecessary, for the sweet <i>Jonquilla</i> luxuriates in our soils and produces bulbs much larger than used to come from Holland. Very effective in deep pockets near the base of rockeries and in perennial borders. \$40.00 per 1,000 strong bulbs | 5.00 | CAMPERNEL ORANGE QUEEN. This form is of that shade of yellow which, although not an orange, strongly suggests that shade. It is of larger size than its parent and of firmer texture | 5.00 |
| DOUBLE JONQUILS. As the name implies, a double form of the above, very charming but a little less fragrant. Very scarce..... | 8.50 | CAMPERNEL REGULOSUS. Well known early improvement of the parent form, stronger and deeper yellow. Upon request we furnish a beautiful color plate of this variety with your order, per 1,000 \$40.00..... | 5.00 |
| SINGLE CAMPERNEL (<i>Narcissus Odorus</i>). Also native of Southern France, bearing 2 to 5 soft yellow florets, delightfully fragrant. Larger than the sweet <i>Jonquilla</i> . This original species is still planted in large numbers for its grace and perfume. It has been used by hybridizers to some extent with good results, as our list indicates; per 1,000 \$35.00..... | 4.50 | CAMPERNEL GIGANTEUS. The finest and best of the hybrids. Size, perfume and foliage are superior to any of the preceding forms. A very fine fragrant cutflower variety; as its clusters are impressive, a dozen stems make a very nice looking bunch for the market. Forces readily and early; per 1,000 \$50.00..... | 6.00 |
| CAMPERNEL PLENUS. Very fine double form, beautiful golden yellow, 2-4 florets per stem | 6.00 | GRACILIS. Resembles <i>Jonquilla simplex</i> . Pale yellow with deep yellow eye. Opens a week later and generally produces larger heads than the Single Jonquil. Sweet scented..... | 9.00 |
| | | GRACILIS TENUIOR. Charming dwarf variety, only 8-9 inches high. Petals silvery white, tiny yellow cups. Opens two weeks later than <i>Gracilis</i> , several florets on a stem. In old catalogues this variety was called "The Silver Jonquil." Very rarely met with either here or abroad | 15.00 |
| | | JUNCIFOLIUS. One of the smallest of the rush-leaved types, petals about 1/3 inch long, dainty flat cups about 1/6 inch wide. 3-4 bright yellow blossoms on a 4 inch stem. Delightfully perfumed. Our stock has been collected in the Pyrenees..... | 10.00 |

THE TRUMPET CLASS

The remarkable advance in the size and symmetry of Trumpet *Narcissus*, as heralded by **King Alfred**, **Olympia**, **Van Waveren's Giant**, was but a stepping stone to greater achievements. **Robert Sydenham** followed, then **Aeolus**, that superb bicolor, then **G. H. Van Waveren** and **Whistler**. Somewhere in their range of majestic beauty we must find places for **Fair Bostonian**, **Fred Howard**, **John Farquhar**, **Prince of Wales**, **Orestes**, **Duke of York** and **Saturnus**. What magnificent perianths and boldly sculptured trumpets. We have grown every one of these stocks from one single bulb to such quantities as enable us to meet a reasonable demand at a reasonable price. And so we place before you the finest collection of the most wonderful trumpet *Narcissus* ever seen together. These Van Waveren introductions are truly in a class by themselves, just as the *Marean Dahlias*, the *Bodger Zinnias*, the *Wrexham Delphiniums* are in a class of their own. They are the aristocrats of the shows and they will presently take over the place in the garden and in the greenhouse, now held by older forms. That these are not idle expressions of pardonable enthusiasm, is substantiated by the fact that a consortium of astute bulb growers in Holland bought one of our trumpet varieties for the capital sum of \$40,000. It has been introduced by them under the name "*Madame Van Waveren*." It is an exquisite easy forcing Giant bicolor. Other Holland bulb growers are patiently growing and acquiring all they can get of Robert Sydenham, Van Waveren's Giant, **Aeolus**, etc.

Practically all these Giant varieties are offered to our American trade at prices materially lower than we can obtain in Holland. They add prestige and reputation to your catalogue and to your house.

| | |
|--|---------|
| AEOLUS. Snow white perianth, long yellow trumpet with beautifully frilled and recurved brim. A giant exhibition variety. As far as we know, this is the largest, most perfect bicolor in existence today. Its colors are pure, its dimensions strikingly symmetrical. The flower is slightly tilted upwards, presenting its full beauty directly to the eye. No other bi- | Per 100 |
| color has caused such a sensation, wherever it is shown, as this Van Waveren seedling. If the stock were in the hands of other growers, the bulbs could not be had at ten times the price. Exclusively offered by us to our regular customers at a truly low price for such a splendid introduction. | |
| Double-nosed bulbs | 30.00 |
| Round bulbs | 20.00 |



NARC. BEERSHEBA

THE TRUMPET CLASS

(Continued)

- Per 100
- BEERSHEBA.** Perianth and trumpet of magnificent proportions. Sturdy foliage and stem. Height 20-22 inches. Its color is not pure white, yet is expressive of purity in the highest sense. Those who are forming collections of fine Narcissus rate Beersheba at the top of the large white Trumpets. Each \$8.00.....
- CERVANTES.** Creamy perianth, primrose trumpet, desirable only for its remarkable earliness and free-flowering tendency. One of our friends wrote Jan. 15, 1930, "We were first with a batch of potted Cervantes which sold like ring-side seats." Per 1,000 \$35.00..... \$ 4.50
- CHICAGO.** Trumpet very dark rich yellow, perianth deep sulphur yellow, beautifully overlapping and of perfect form and proportion. One of the very brightest trumpet Daffodils, larger than Emperor. Midseason to late blooming..... 12.00
- CORNELIA.** In every respect an improved Emperor. Just a trifle larger, a bit clearer in color, trumpet form the same as Emperor but more frilled at the mouth. Excellent texture for long distance shipping..... 8.00
- DR. NANSEN.** Large sturdy bloom, yellow trumpet with slightly lighter perianth. Broad foliage and sturdy stem. A variety that, in the hands of a good impresario, would soon be talked about from Coast to Coast..... 20.00
- DUKE OF YORK.** Magnificent yellow trumpet on cream colored guard petals. Conspicuous and valuable on account of its exceptionally long stems. Approaches Robert Sydenham in size. Very desirable for cutflower shippers who wish to build up an exclusive trade. 2,000 bulbs, round and double-nosed..... 18.00
- EMPEROR.** The "yard stick" of repute by which all other yellow trumpet varieties are measured.
 Selected double-nosed bulbs..... 7.00
 No. 1 double-nosed..... 6.00
 Extra round bulbs..... 4.00
- EMPRESS.** The "yard stick" of repute in bicolors. Unfortunately good stocks are getting very scarce.
 Selected double-nosed bulbs..... 7.50
 No. 1 double-nosed..... 6.00
 Extra round bulbs..... 4.50
- FAIR BOSTONIAN.** Named for a young lady from New England who was requested to pick out the finest seedling of a particular lot she was admiring. Upon being asked if it might carry her name to grace the gardens of many countries, she modestly but firmly declined. Her wishes were fully respected but the flower was named for her just the same. It is a bi-



A FINE GROUP OF VIRGINIA-GROWN DAFFODILS

- Per 100
- color of very refined appearance, belongs in the "Giant" class and will be planted with the choicest kinds in many gardens.
 Double-nosed bulbs 20.00
 Round bulbs 15.00
- FRED HOWARD.** A near bicolor like Van Waveren's Giant, perianth soft sulphur yellow, nearly white when forced. Trumpet slightly softer yellow than King Alfred, an intriguing shade. The brim deeply serrated and nicely pleated. A flower of delicate harmony in form and color. Medium early. Trumpet faces straight from the flat perianth. A subtly tinted beauty. Late bloomer..... 20.00
- G. H. VAN WAVEREN.** Selected to bear the name of the successful hybridizer, who could always be found amongst his daffodils in the Springtime. Quiet, kindly and unassuming as he was, it is very doubtful that he would have sanctioned the use of his name in connection with such a bold gorgeous flower. All yellow, with gleaming gold dust shimmering in the texture. Early 30.00

THE TRUMPET CLASS

(Continued)

| | Per 100 | | Per 100 |
|--|---------|---|---------|
| GLORY OF SASSENHEIM. An enlarged bi-color Victoria. Very fine for forcing and free-flowering. We grow an excellent stock of it. The bulbs do not always travel well and cannot stand being above ground too long..... | 8.00 | MAJESTIC. Attractive seedling of King Alfred and Cleopatra. Perianth and trumpet of very refined appearance. All yellow. A show variety. Each \$0.50..... | |
| Round bulbs per 1,000 \$55.00..... | 6.00 | MAJOR TRUMPET. Yellow, an old floriferous variety, very early..... | 3.50 |
| GOLDEN SPUR. We offer a special strain of Western grown Golden Spur that is remarkably free-flowering. This strain, we understand, originally came from our nurseries at Hillegom, a stock which always produced large blooms and blue-green foliage and which was very floriferous. Few people realize what a difference there is between one strain of "Spurs" and another. These are worth the price. | | Round bulbs per 1,000 \$20.00..... | 3.00 |
| Double-nosed bulbs..... | 7.00 | MINISTER TALMA. As King Alfred, only slightly smaller, much better than Golden Spur. It is particularly good for forcing, being earlier than Alfred. Getting a bit scarce now. | |
| Round bulbs or No. 11 double-nosed..... | 5.00 | Double-nosed bulbs..... | 7.00 |
| GOLDEN HARVEST. This variety truly produced a golden harvest for the fortunate introducers. Magnificent in proportion and great size. Early. Each \$15.00..... | | Extra round..... | 5.00 |
| GOLDEN SCEPTRE. This is a result of a cross between Campernel and Monarch. Its fragrance points to one of its parents but its size has caused us to class it with the trumpet Narcissus. Fine color plate upon request..... | 7.00 | MRS. E. H. KRELAGE. A charming visitor, standing before a bed of this exquisite variety asked us: "Is this the White King Alfred?" That question conveys quite satisfactorily the impression its flowers make. But how much more convincing is a good half-tone! It portrays so accurately the pristine purity of this regal flower, the play of light on its balanced petalage, the graceful curve of the trumpet's brim. An excellent propagator, producer of large sound bulbs. Easy to force, long stemmed. Has no rival at the shows. | |
| HAROLD BEALE. Perfection in perianth and trumpet, very free flowering, coloring like Emperor, which is completely dwarfed in comparison. Every one of our introductions can be relied upon for some valuable characteristics such as great size, clear color and fine keeping qualities. Besides that, each one has some special advantage for which it was selected. This one forces very easily..... | 20.00 | Strong bulbs..... | 18.00 |
| HERBERT SMITH. Sharply pointed light yellow perianth, long fluted yellow trumpet of noble form, sturdy plant..... | 15.00 | Round bulbs..... | 13.00 |
| Round bulbs..... | 10.00 | MRS. R. O. BACKHOUSE. Perianth white, trumpet pale apricot pink. About the size of a small old Princeps. Nodding posture. If it were not for the fact that Narcissus trumpets have been either yellow or white for ages and that this seedling shows a slightly deeper pinkish cast than the old variety Apricot, we would class it as an insignificant garden variety of no great merit. As it is, one has to stand rather close to it to even see the pink reflex. But it is undeniably there. Each \$5.00..... | |
| JOHN CAIRNS. Remarkable clear yellow self, a firm quality to perianth and trumpet, free-flowering with long stems. A first class market flower of the "Giant" tribe, and a superb decorative garden variety..... | 15.00 | OLYMPIA. A much improved and enlarged Emperor, very free-flowering and exceptionally hardy. This giant trumpet is now priced so low that it can be ranked as a leading commercial cutflower variety..... | 10.00 |
| JOHN FARQUHAR. Our spring 1929 field notes say: "Solid yellow trumpet, very wide "at base and opening wider at the brim, ex., "ex., substantial perianth. Later than Giant, "much more substance, extra cutflower and "presume wonderful pan Daff. I think very "highly of this, bright and satisfying. Ex., "broad petaled, sulphur yellow perianth, cor- "rectly placed. This block makes an over- "whelming impression. Reduce sales and work "up much larger stock of it."..... | 25.00 | Round bulbs, per 1,000 \$65.00..... | 7.00 |
| KING ALFRED. Large golden yellow of very refined appearance. Color plate upon request. | | ORESTES. Size, form and general appearance like that of our famous "Whistler," perianth just a trifle darker. Rapid, reliable propagator. The stock of this giant variety can be bought in its entirety with privilege of re-naming it to suit the purchaser..... | 20.00 |
| Large double-nosed bulbs..... | 12.00 | PETER BARR. A fine white. Perianth pure white, trumpet ivory white. Much better grower than Mad. de Graaff and Sulphur Beauty; foliage has a bluish green tint which enhances the beauty of the flower. Height 14 to 15 inches when in full bloom..... | 20.00 |
| Medium double-nosed bulbs..... | 9.00 | PRINCE OF WALES. Light yellow, bold and free-flowering, extra. Bound to be a winner of many prizes when better known..... | 15.00 |
| Round bulbs..... | 7.00 | Round bulbs..... | 10.00 |
| Our stock of K. A. is in prime condition, probably the best and largest in America. | | | |



JONQUILLA SIMPLEX (see page 22)

Gold dust gleaming in our eyes.

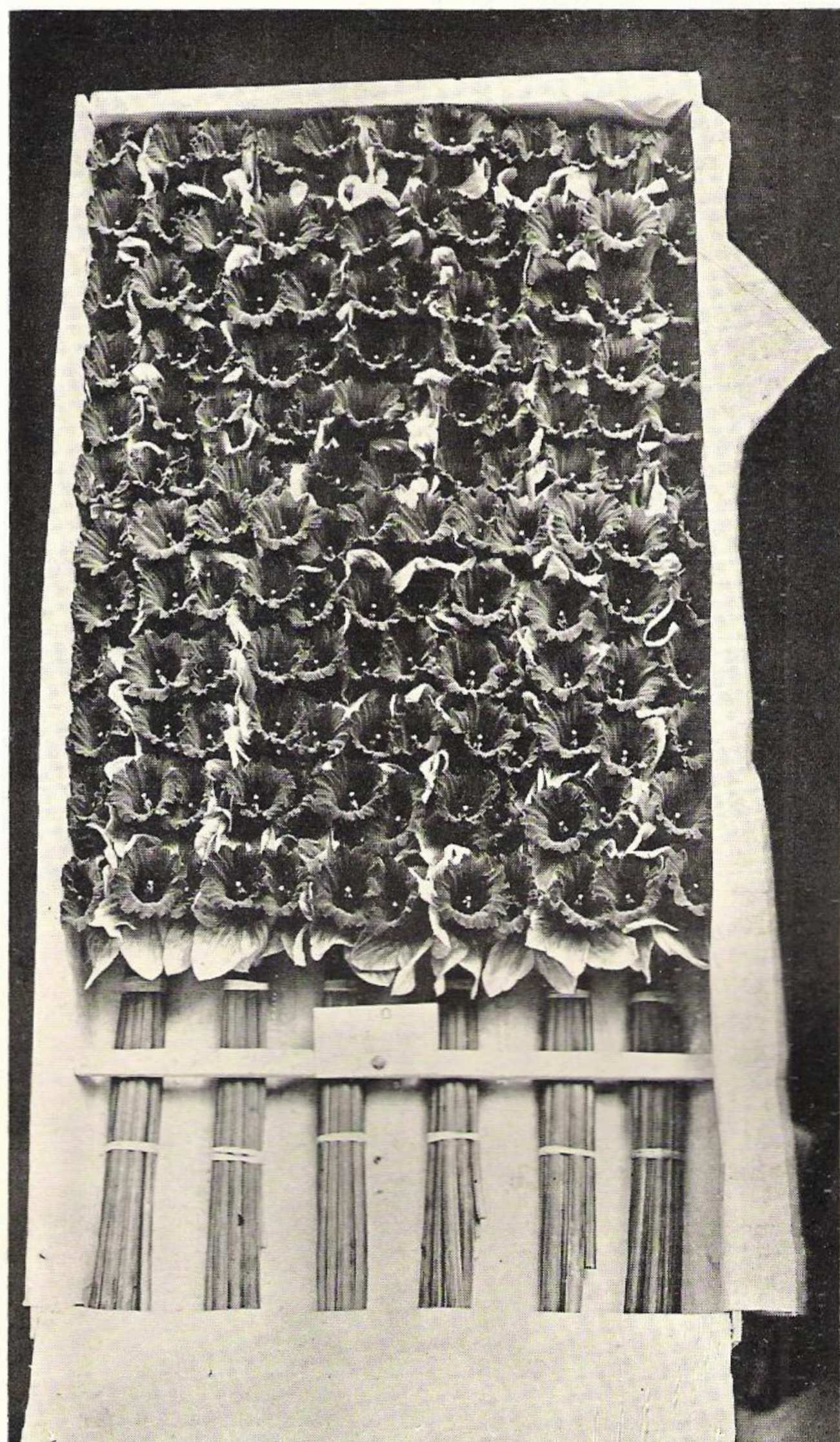
THE TRUMPET CLASS

(Continued)

| | Per 100 | | Per 100 |
|---|---------|--|---------|
| PRINCEPS. Bicolor, old favorite. | | TRESSERVE. Although we know by experience and comparison that Robert Sydenham is superior in every respect, we have acquired a stock of Tresserve to accommodate those of our customers who have been induced to list it and do not now care to drop it from their catalogue | |
| Double-nosed bulbs | 5.00 | Round bulbs | 10.00 |
| Round bulbs | 3.00 | | 8.00 |
| ROBERT SYDENHAM. The superb, outstanding heavily frilled trumpet of beautiful golden yellow, glittering as if sprinkled with gold dust, backed by the symmetrical soft sulphur yellow perianth, presents an unforgettable picture. The entire flower suggests rugged proportionate beauty such as the Greeks loved to express in their masterful sculptures. The length of the stem and the quality of the foliage strengthen the first impression obtained from the blooms. | | TREASURE. There is a "Tiffany quality" in Narcissus, which finds expression in the form, color and stand of the flower. King Alfred, with all its good points, lacks this artistic finish, "Treasure" has it. The perianth overlaps perfectly, it is smooth and strong, each point in its place. The trumpet fits at exactly the right angle, its lines harmonize with those of the petals, while the brim is rolled back just enough to impart exquisite grace to the entire flower. All yellow. Height 22 inches. Each \$0.75 | |
| Forces readily from February 1st on, free-flowering and a good propagator. Entirely hardy. Belongs in every collection at the flower shows, where it is a consistent winner. | | | |
| Double-nosed bulbs, per 1,000 \$120.00 | 13.00 | VANILLA. Long yellow trumpet backed by pale yellow pointed perianth. Easily recognized by its unique vanilla fragrance. A very good-looking flower of excellent size, almost a bicolor. It is a garden variety as the flowers are not resistant to packing and shipping when forced. Very nice for pans | 9.00 |
| Round bulbs, per 1,000 \$90.00 | 10.00 | Round bulbs | 7.00 |
| SATURNUS. Seedling of Robert Sydenham x Van Waveren's Giant and an embodiment of extreme refinement. Trumpet's edge prettily gauffered. Stem, substance, foliage of the very best. Pale sulphur and deep yellow. May be purchased outright and re-named. Offered for the first time | 20.00 | VAN WAVEREN'S GIANT. Perianth primrose, bright yellow trumpet, the oldest and still one of the best in our "Giant" class | 15.00 |
| | | Round bulbs per 1,000 \$100.00 | 10.00 |
| SIR ERNEST SHACKLETON. Seedling of Van Waveren's Giant, a very fine large bicolor which promises to become a leader | 16.00 | This is really a bicolor and as such successfully takes the place of Victoria and Glory of Sassenheim. | |
| SIR FRANCIS DRAKE. Clear yellow, large, very early, long stemmed cutflower and show variety. Produced from the same crossing that furnished King Alfred. It is not a very good propagator | 10.00 | VICTORIA. Long the standard bicolor for forcing, but difficult to grow and inherently weak in storage and in transit. | |
| Round bulbs | 8.00 | Double-nosed bulbs per 1,000 \$75.00 | 8.00 |
| SPRING GLORY. Clean white perianth with long petals and long chrome yellow trumpet, reflexed brim. Very scarce | 8.00 | Round bulbs per 1,000 \$50.00 | 6.00 |
| Round bulbs per 1,000 \$60.00 | 7.00 | WEARDALE PERFECTION. Of giant proportions, symmetrically formed, tall strong stems and foliage to match. A truly superb plant. Perianth snow white, trumpet an ideal clear lemon yellow. Stands unrivaled in its perfect beauty, but it is the despair of the bulb-grower because of the hazards and slowness of its propagation. For every bulb sold, at least four must be retained to prevent exhaustion. Midseason. Received numerous awards, certificates and special prizes | 20.00 |
| SULPHUR BEAUTY. Much better than Madame de Graaff as the flowers are of the same color, face forward and possess a beautiful perianth. Unfortunately it appears to be a difficult propagator | 25.00 | WHISTLER. This superb variety fitfully carries the name of the great English painter. It is a carefully selected hybrid of Robert Sydenham, of marvelous size and symmetry. Its bold glistening trumpet seems to send a call to all the world to come and view its beauty, while the lustrous perfect perianth serves as a shield to enhance the grace and the color of the trumpet. A leading exhibition variety now, its future as a great market flower is absolutely assured. (Illustrated on page 30) | 35.00 |
| SUNBEAM. (Trumpet.) Much like a fairly large Princeps, long trumpet of a pale sulphur moonlight color, mouth nicely frilled. Long pointed petals. The flower opens primrose yellow with trumpet pointing downward like a Giant Triandrus | 25.00 | | |
| THACKERAY. Obviously a seedling of King Alfred. The phenomenal increase in the stocks of its parent and its breath-taking popularity overshadowed the importance of this offspring, which is a slow propagator. The foliage is broader and bluer, the stems sturdier, the flower larger and deeper yellow. In every respect a better King Alfred. Each \$0.75 | | | |

THE TRUMPET CLASS

(Continued)



Box of Van Waveren's Giant which won first prize in Spalding, England, April 19, 1930 in a competitive exhibit of trumpet Narcissus packed ready for shipment.

GRAND MIXTURE

Our mixture contains a great range of varieties. It is not just any old kind with a handful of something else thrown in. We furnish a mixture that any one may proudly show to his neighbor or friend, for it is made up of the thousands of bulbs that "volunteer" after the previous year's digging. Our giant trumpets are there as well as the redcups and Leedsii's. It is probably due to the many pleasant surprises in it that our Grand Mixture sells so well..... per 1,000 \$35.00

CUT FLOWER MIXTURE

An excellent blending of varieties suitable for naturalizing or other mass plantings. It furnishes seedsmen a reliable article which they can offer to their trade at an attractive price. A few hundred of these reasonably priced bulbs, planted in any garden corner, will furnish many surprises and a fine lot of flowers for table and room decoration.

Per 1,000 \$25.00; per 10,000 \$200.00.

| | |
|-------------------------------|-----------|
| | Per 1,000 |
| Mixture of all Trumpets | \$35.00 |
| " " " Short Cups | 20.00 |
| " " " Doubles | 35.00 |

AN UNSURPASSABLE COLLECTION

- Whistler (yellow Trumpet)
- Mrs. E. H. Krelage (white Trumpet)
- Aeolus (bicolor Trumpet)
- Croesus (Incomp.)
- Bonfire (Barrii)
- Crystal Queen (Giant Leedsii)
- Joconde (Poetaz)
- Cheerfulness (double Poetaz)
- Thelma (Poeticus)
- Primrose Phoenix (double)

NARCISSUS FOR THE ROCK GARDENS

APRICOT. (Trumpet.) Creamy white pointed perianth, trumpet pale apricot with distinct pink glow. Form of flower resembles a small Princeps. One of the first breaks to show a red tinting in the trumpet. Now exceedingly scarce as it propagates slowly. Height about 9 inches. For a semi-shaded spot in the rockery. Only 20 bulbs offered this season. Each \$1.00.....

BULBOCODIUM CONSPICUUS. That such a lovely little flower should bear the unlvely

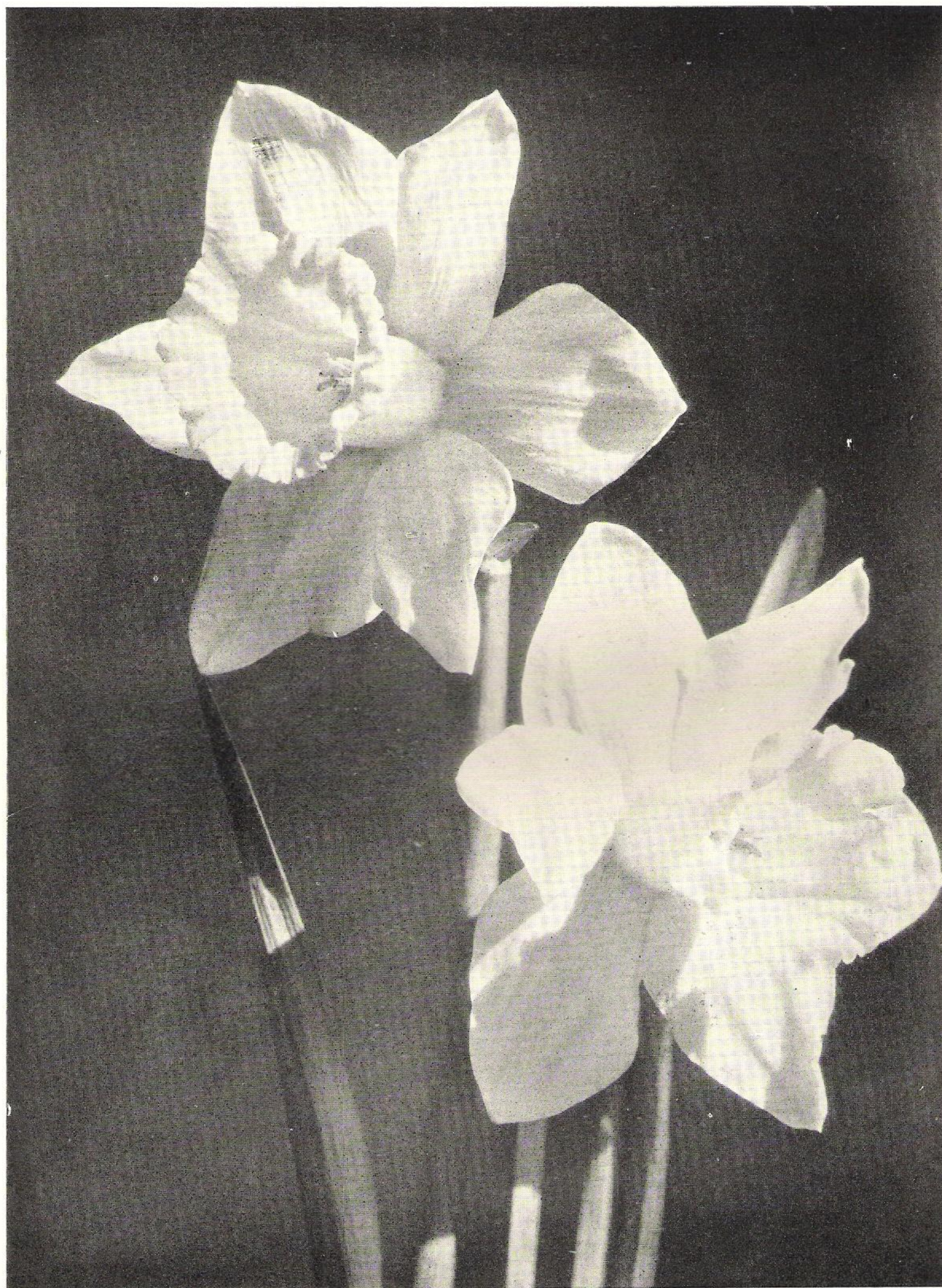
popular name of the Hoop Petticoat requires a good deal of imagination. It grows only 6 inches tall with fine rush like foliage, the flowers are about an inch wide and the entire impression is one of petite daintiness. It shivers in the middle of March weather, being one of the very earliest heralds of Spring.

Deep sheltered pockets in the rock garden filled with a sandy peat soil suit it admirably. It is rich golden yellow. Our stock is very limited

Per 100

15.00

(Continued on page 31)



NARCISSUS, MRS. E. H. KRELAGE (see page 25)

The memory of its pristine purity lingers on.



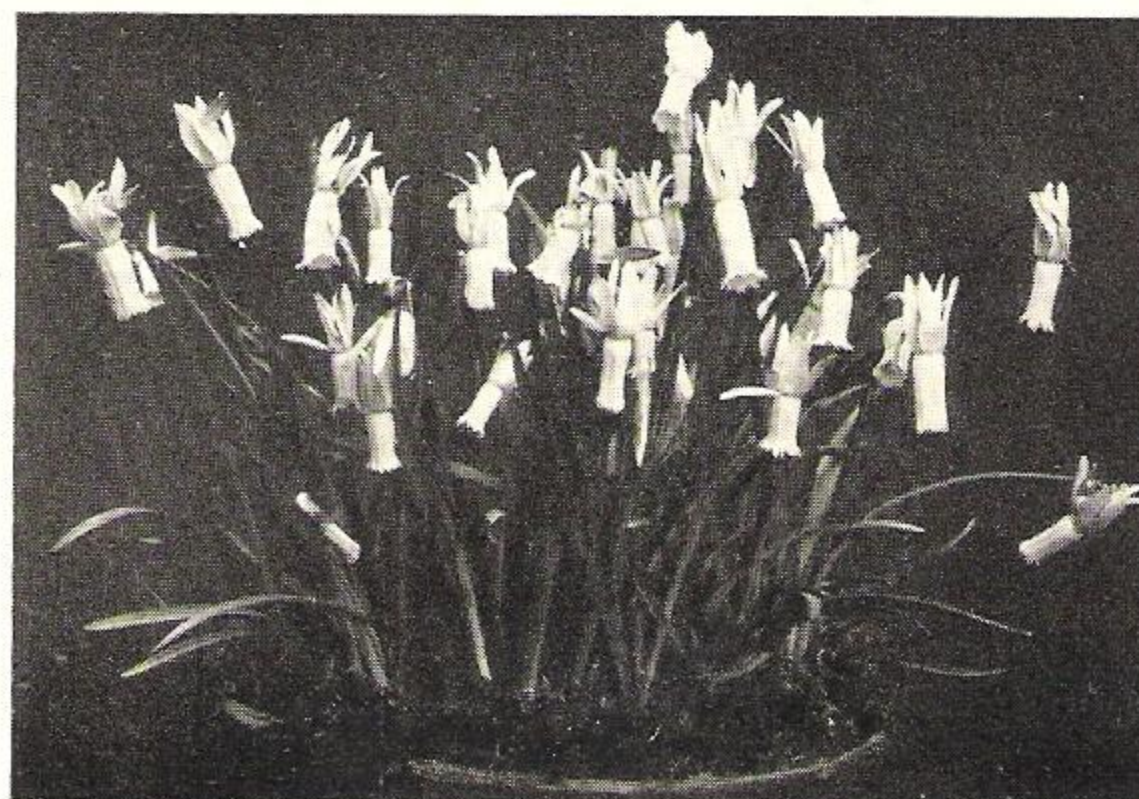
NARCISSUS, WHISTLER (see page 27)

Proudly sounding the call of beauty.

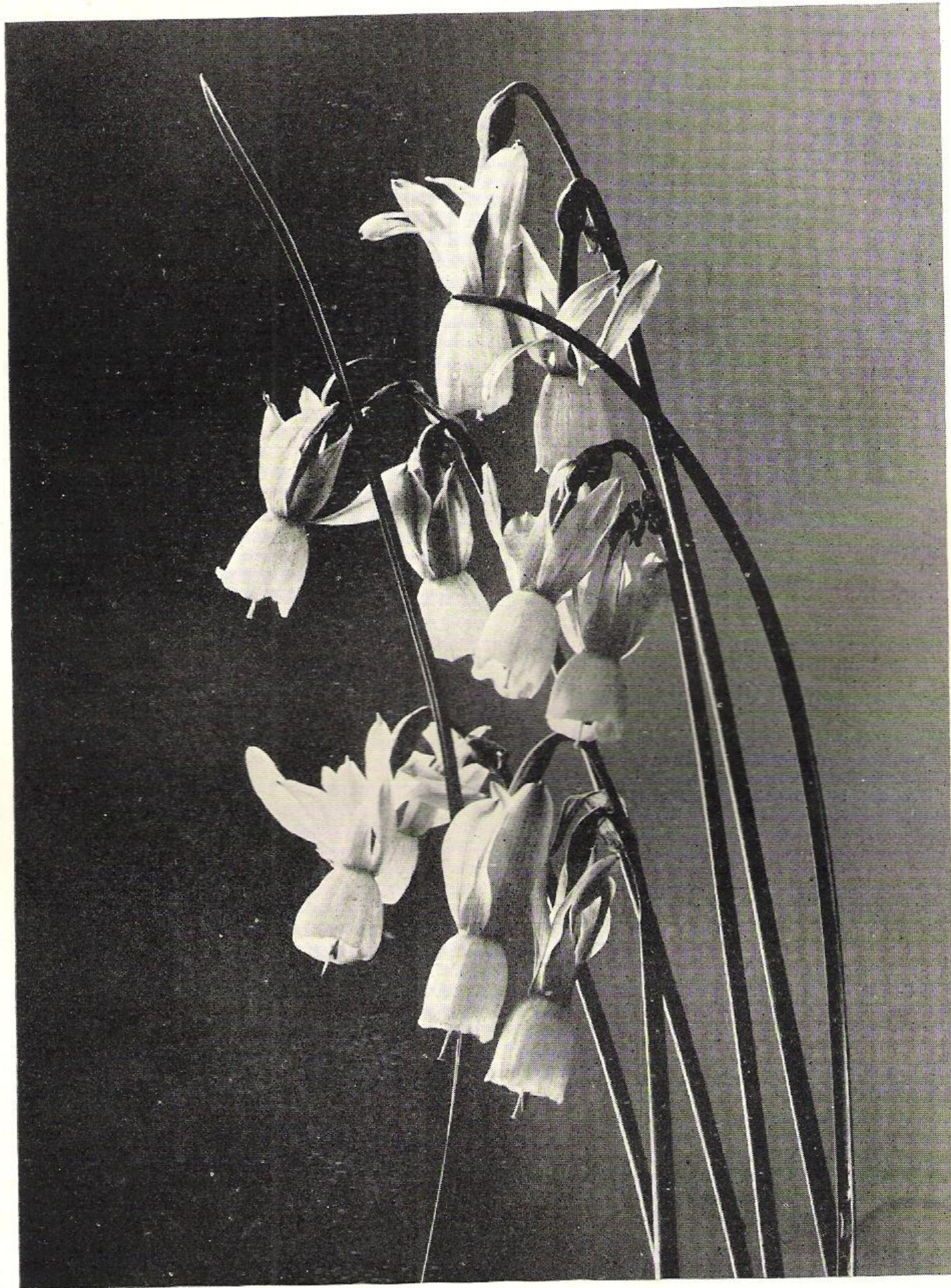
NARCISSUS FOR THE ROCK GARDENS

| | Per 100 | | Per 100 |
|--|---------|--|---------|
| CARDINAL. Guard petals white, tiny straight edged cup of clear red. 9-11 inches tall, foliage of lovely bluish green tint. Collectors' variety. Only 25 bulbs available at present. We know of no other stock in this country. Each \$0.50 | ----- | | |
| CIRCLET. Flat cream white perianth, all petals touching and overlapping. The disc or eye is of Poeticus form but much larger, covering about 1/3 the area of the petals. This cup is lovely soft yellow with tiniest edge of red. Height 9 inches. This variety and "Incognita" belong to the Engleheartii class which has been merged with the Barrii. Each \$0.30 | ----- | | |
| CYCLAMINEUS. A species for damp and shady situations. One of the earliest to open. Perianth reflexed like the flower of the Cyclamen, exceedingly slender trumpet of pure yellow. Height about 5 inches. We offer 200 of these tiny bulbs, subject to crop, at | ----- | | |
| | 15.00 | | |
| GLITTER. A description is hardly needed, the name tells it succinctly. We may add that perianth and cup are deepest golden yellow, with glittering red edge. Petals nicely rounded, of firm sparkling texture. A choice little mite on an 8 inch stem. Now very rare. Only 20 bulbs. Each 50 cents | ----- | | |
| INCOGNITA. Of the same distinct and catchy form as "Circlet." A gleaming white perianth with broad disc or flat cup heavily tinted orange with pink overtone. Larger and taller than Circlet. About 13 to 14 inches when in full bloom. Valuable for exhibition. We offer 250 bulbs this season | ----- | | |
| | 20.00 | | |
| MASCOTTE. Splendid white guard petals, frilled yellow cup with ribbon edge of lively orange scarlet. Grows only 8-9 inches high and opens its bright eyes late, when nearly all other rockery varieties have finished their repertoire. For this season 200 bulbs at | ----- | | |
| | 20.00 | | |
| MINIMUS. All yellow tiny trumpets set among tiny petals. The smallest and dwarfest of all. 3-4 inches. Very early. Under sheltered conditions it will live and bloom, but it requires care and patience. Although we give our very best attention to the small stock, we never know when some adverse condition may wipe out the stock or reduce it severely. Subject to crop we offer 200 bulbs at 20 cents each | ----- | | |
| MRS. BUCHANAN. A bold trumpet of soft primrose, nicely frilled and of very wide open form, perianth wavy and almost pure white. A remarkable flower on a 7 inch stem. In the mad scramble for long stems, much was discarded that now would be appreciated for low borders and rock gardens. Fortunately some very dwarf forms have occasionally been saved by collectors who did not judge by stem-length only. Early. Just 30 bulbs this year, at 50 cents each | ----- | | |
| | ----- | | |
| MRS. ROBERT SYDENHAM. (Trumpet.) Crystal white large perianth, long fluted ivory trumpet which passes to pure white in a few days. The mouth is gracefully frilled. Modest foliage. Flowers assume a nodding demure attitude, like giant snowdrops. Opens late, on 8-9 inch stems. The R. H. S. recognized its high qualities with an A.M. Indicated for pockets between low rocks. About 200 bulbs for 1932, at | ----- | | |
| | ----- | | 20.00 |
| ODORUS ORANGE QUEEN. Slender stem and foliage, about 11-12 inches high. Three or four good size florets of a pronounced golden orange self. Cups as large as Campemel and very prettily fluted. The color is much darker than that of the yellow Crocus | ----- | | |
| | ----- | | 5.00 |
| ORIFLAMME. Round petals of ivory whiteness, very small intensely red cup. The perianth, of rather good size, spreads in delightful but sharp contrast around the vivid miniature cup. Mid-season. This dainty Barrii blooms but 10 inches high. Just 25 bulbs at 35 cents each | ----- | | |
| QUEEN OF SPAIN. Sweet canary yellow, gracefully nodding trumpets of diminutive size on 7 inch stems. Originally found in Spain and now one of our most prized varieties for adornment of our rock gardens. Very scarce | ----- | | |
| | ----- | | 20.00 |
| SALMONETTA. Very pretty dwarf Leedsii with white perianth and salmon-tinted cup. A sweet, free-flowering little thing with a definite character due to the unusual tinting in the cup. Fine for the base and the slope of rockeries. Often produces two flowers on one stem. Now very rare and scarce | ----- | | |
| | ----- | | 13.00 |
| TORTUOSUS. Pale sulphur passing off white. Graceful nodding pose. Long twisted petals, trumpet's edge nicely frilled. Belongs to the Moschatus family and is the probable parent of all our large white trumpet varieties. In the morning hours the flowers have a mild musk fragrance | ----- | | |
| | ----- | | 20.00 |

(Continued on page 33)



NARC. CYCLAMINEUS



ANGELS' TEARS

Then what would be a more fitting description?

NARCISSUS FOR THE ROCK GARDENS

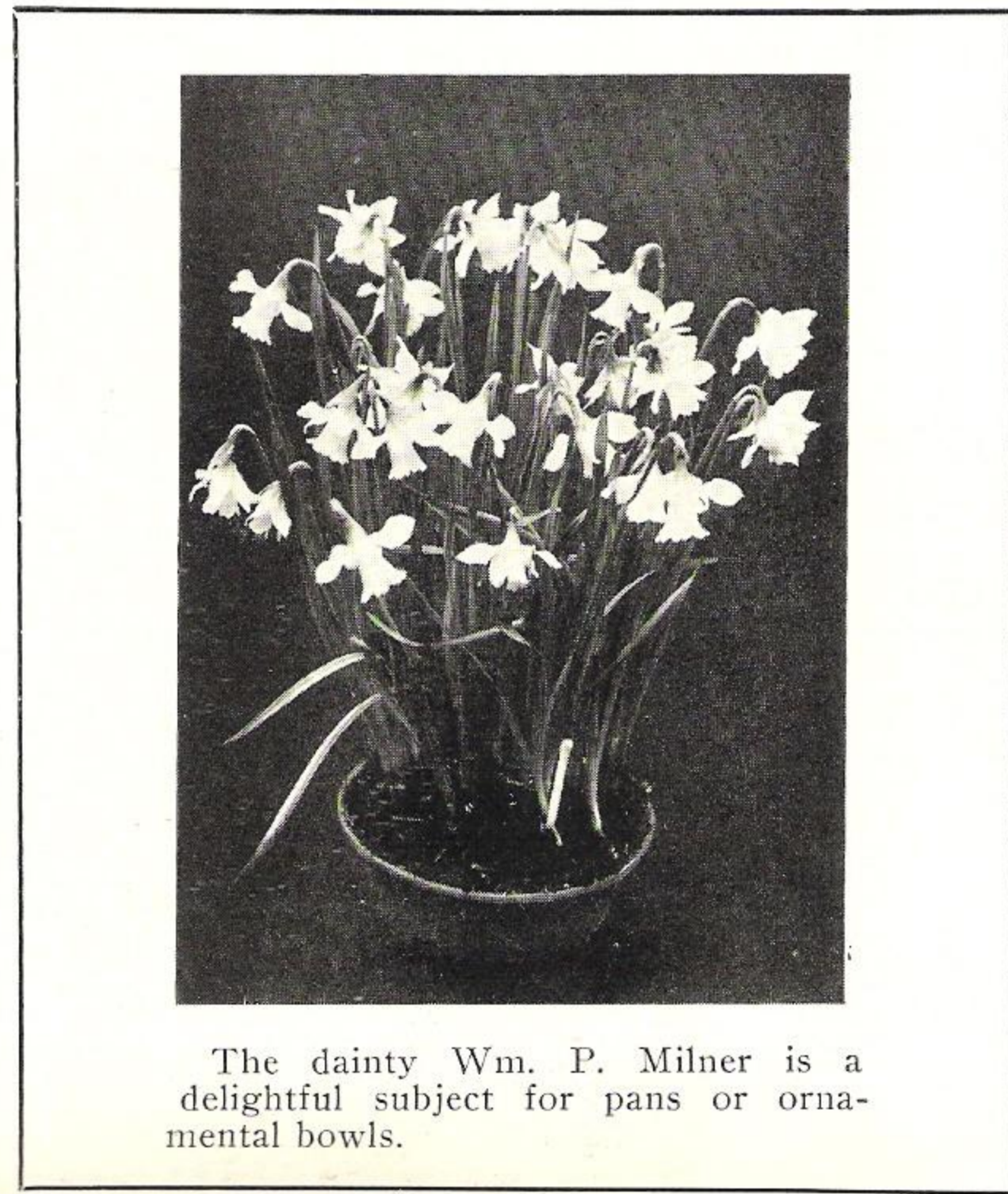
Per 100

TRIANDRUS ALBUS. The "Angels' Tears" of old Portugal. Creamy white trumpet which points down while the sharply recurved petals point upwards. Flowers are about $\frac{3}{4}$ inch long on 6 inch stems. Prefers gritty soil between rocks. Requires considerable care, but its grace and delicate beauty fully reward the patient and persistent gardener. Subject to crop. (Illustrated on page 32)..... 12.00

TRIANDRUS THALIA. In addition to a peculiar attraction at first sight, this flower leaves a wish for something that seems missing. One can't say what it is, and yet one feels decidedly that a mysterious want exists. Is it the whiteness that is not white, or the recurving petals and the angle of the three trumpets, so unlike the conventional type? Or the dark green round reed-like stem? Some call it the "orchid flowered" Narcissus, which adds to the mystery. Why "orchid flowered"? Thalia provides unusually good material for artistic photographs. At the flower shows its "spell" evokes endless comment 25.00

WILLIAM GOLDRING. (Swan's Neck Daffodil). Pale primrose passing off white. Gracefully drooping flowers of medium size and not much substance, but blooming early and easily establishing itself in clumps in the border where it displays a charm all its own. Stock very limited 18.00
Round bulbs 13.00

W. P. MILNER. Miniature white trumpet and perianth. Eminently satisfactory for rockeries because it seldom fails to establish itself and to bloom generously for years. Only 11 inches high. Exceedingly attractive when forced in small bowls. Endowed with the fragrance of the Cowslip. Very free-flowering 15.00

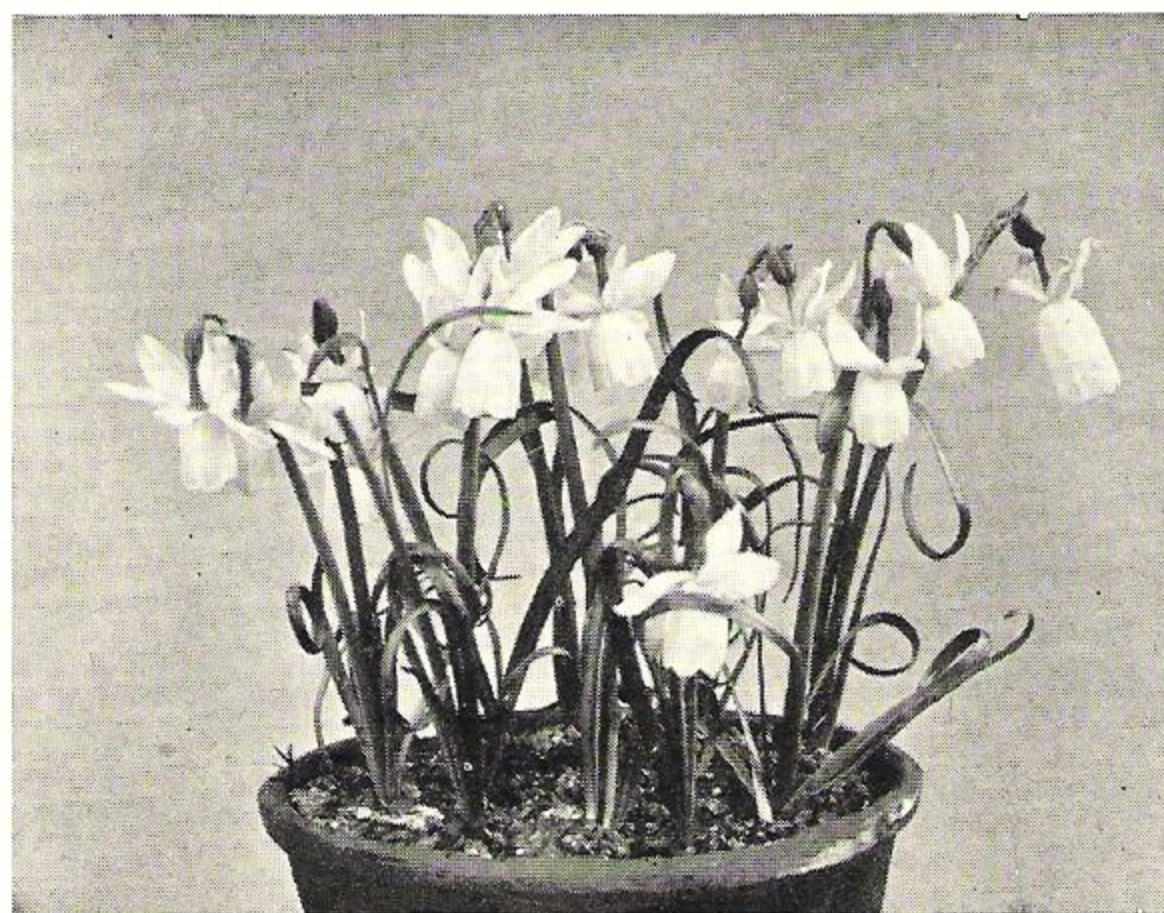


The dainty Wm. P. Milner is a delightful subject for pans or ornamental bowls.

"Your exhibit at Nuttall was a revelation to me. My husband and I talked about it all the way home. We have long been admirers and collectors of the bearded Iris varieties, but we have now definitely turned to the newer Daffodils, or 'Narcissi' as you insist on calling them."
"Please advise me where I can place my order."

DWARF SPECIES and their hybrids

- | | |
|--------------------------|----------------------|
| Bulbocodium | Citrinus |
| " | Conspicuus |
| " | Monophyllis (Clusii) |
| Canaliculatus | Juncifolius |
| Cyclamineus | Minimus |
| Gracilis Tenuior | Nanus Albus |
| Johnstoni Queen of Spain | Triandrus Albus |
| Jonquilla Simplex | |



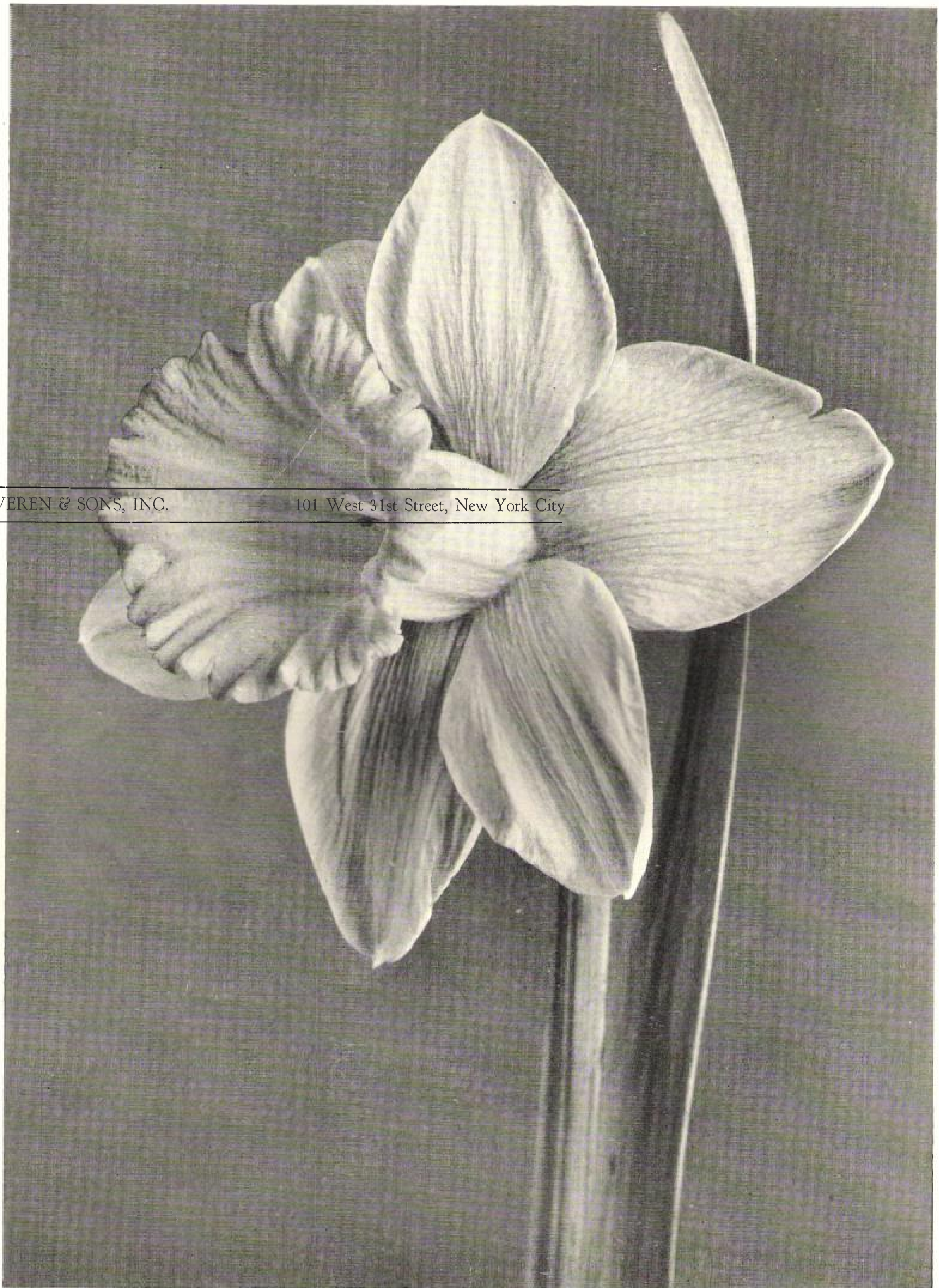
NARC. TRIANDRUS

**NARCISSUS
"PRESIDENT VIGER"**

You have a delightful surprise coming to you. Visualize, if you can, a petunia flowered crown, heavily serrated, crisped and crested, gauffered and ruffled, backed by a broad white perianth of Sir Watkin dimensions. We mean Sir Watkin at its best. The heavy pleating of the crown intensifies the yellow tone so that it seems to reflect an orange hue. Two and three flowers per bulb. Long stems, early. A prized possession of this company. We offer a few hundred bulbs this year. See page 4.

M. VAN WAVEREN & SONS, INC.

101 West 31st Street, New York City



NARCISSUS, G. H. VAN WAVEREN (see page 24)
A mighty chieftain of the clan.