



BEERSHEBA

OREGON GROWN BULBS
from one of America's finest collections
of

**NOVELTY
DAFFODILS**

for 1945

GRANT E. MITSCH
LEBANON, OREGON



OUR GIRLS AMONG THE DAFFODILS

Visitors welcome to our gardens except on Sundays. The Daffodil display is usually at its height from March 20th to April 10th. We are all hoping that before another season, the war will be over and that travel restrictions may be eased or lifted entirely. While our place is not landscaped, we have a nice selection of Daffodils and of some other flowers in season. We are members of the following horticultural organizations:

American Horticultural Society
Royal Horticultural Society
American Amaryllis Society
American Delphinium Society
British Delphinium Society
American Iris Society
New England Gladiolus Society
Canadian Gladiolus Society
American Rhododendron Society
American Primrose Society
American Rose Society

The instinctive and universal taste of mankind selects flowers for the expression of its finest sympathies, their beauty and their fleetingness serving to make them the most fitting symbols of those delicate sentiments for which language itself seems almost too gross a medium.—Hillard.

What a desolate place the world would be without a flower! It would be a face without a smile, a feast without a welcome. Are not flowers the stars of earth, and are not stars the flowers of heaven?—Mrs. Balfour.

Daffodils

That come before the swallow dares, and takes
The winds of March with beauty.

—Shakespeare.

FOREWORD

With the rapid increase of Daffodil plantings in this country it appears that the attention it has long merited is now being bestowed on this harbinger of spring. Needless to say, the great refinements in beauty and diversity of form, size, and color given it by British and Dutch hybridizers has done much to increase the number of Daffodil fanciers.

The increase in demand for bulbs coupled with the fact that Daffodils do not multiply as rapidly as many other popular bulbous plants such as Gladioli, Dahlias, Iris, etc., makes for a scarcity of bulbs, particularly in certain varieties. Of other kinds there should be enough stock to last through most, if not all the season. Last year some varieties sold out so completely early in the season that we will not have stock of some of these to offer this year. The quantity of some others is quite limited, although we hope to have enough of most varieties to last until late in the season.

We are glad to be able to offer what we believe is one of the finest selections of newer Daffodils available in America; some of which are procurable from no other source in this country. Included in our listings are varieties from Holland, England, Scotland, Ireland, Australia, and New Zealand as well as a few originated in America. This year we are listing a number of the very newest importations, and while the prices of these are as yet prohibitive to the average gardener, some among them are among the finest varieties in their respective classes yet seen. As stocks increase, the prices will come down. In a few cases, we have only one or two bulbs to spare and if there are any who wish to purchase these bulbs, orders should be sent in early. A few varieties are listed without prices as stocks of these are too limited to permit sales this year, but as we may not issue a descriptive catalogue next season, these descriptions should serve.

Our thanks are extended to all our many customers and we trust that in all cases, the bulbs purchased have performed well and that all of you have in a large measure received the enjoyment from the flowers that we have. It is fortunate that in these times of depressing atmosphere brought on by the ravages and sorrows of a world at war, we may find solace and relief in caring for and watching the growth and development of plant life placed here for our enjoyment by our Creator.

No doubt we are partial and somewhat prejudiced wherein Daffodils are concerned but we feel that they have no equals as early spring flowers. Being among the first of the flowers to bloom they serve to break the monotony of the bleak winter season and bring cheer and color to end the void of drab days. There are those who lament the lack of variety in color, but even this shortcoming, if such it may be called, is being remedied to some extent by plant breeders; and to offset this, there is quite an infinite variety of size, form, texture, and tonal variation in the colors common to Daffodils.

PLEASE READ BEFORE ORDERING

Please send all orders before September 15th, and if possible, by September 1st. We are aware that Daffodils may be planted until well along in October, or even November with good results, but in most sections, earlier planted bulbs give the finest flowers. With the shortage of help, it is unlikely that we can start shipping much before September 1st, and with the accumulation of orders received earlier in the season, it is quite impossible to catch up with incoming orders for some time. Thus far, we have personally filled nearly all orders received and we solicit your patience when we fail at times to get orders out just when wanted. Under present conditions it is quite impossible to do justice to all correspondence and we implore the pardon of any whom we may have failed in this matter.

A very special reason for our asking that you order early aside from the fact that we like to replant early is that we must get our Daffodil bulbs mostly out of the way in time to harvest our crop of Gladiolus. In addition to bulbs we are raising some wartime food crops and these take time that would otherwise be given to more efficient handling of the bulb business. However, we usually get most orders out in September and aim to get them out as nearly as possible at the time desired.

TERMS: Please send cash with order or 25% down and the balance before or on delivery. Prices quoted include transportation but those desiring to pay for shipping may ask that bulbs be sent express collect and we will gladly give extra bulbs to offset transportation costs. All stock offered subject to prior sale and to crop or other conditions beyond our control. We aim to send out only true-to-name, good quality, large bulbs that should give good representative bloom the first spring after planting. If for any reason you are dissatisfied with the order, write us and give us an opportunity to make amends.

SUBSTITUTIONS: We do not like to substitute varieties but should we be unable to supply items ordered, we will use our judgment as to substituting something else unless requested not to substitute.



HERA



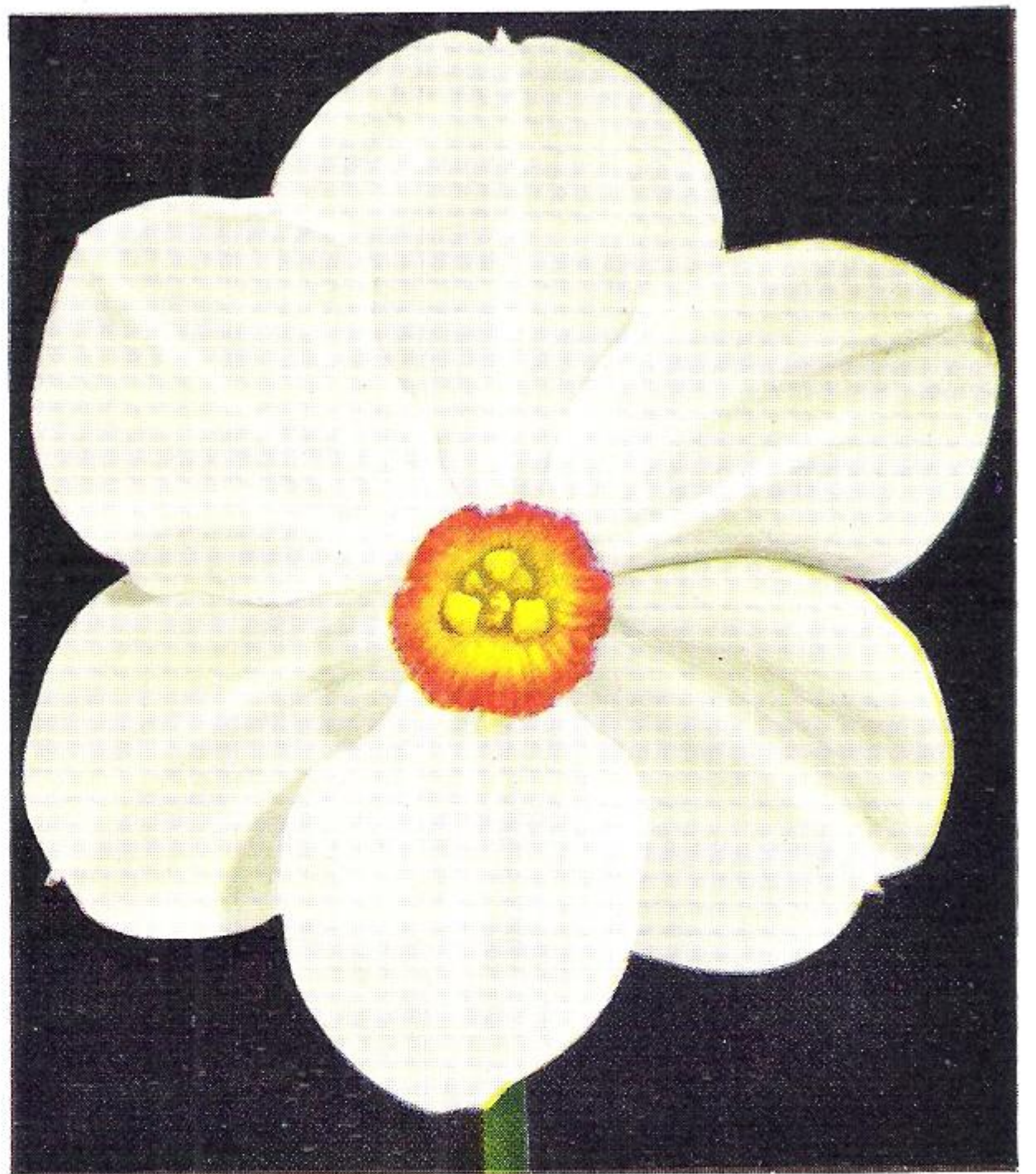
JOHN EVELYN



AEROLITE



FIRETAIL



ACTAEA (See page 20)

Remember: Please Order Before September 15th.

CULTURAL INSTRUCTIONS

Daffodils are not difficult to grow, but like other flowers they appreciate the meeting of certain cultural conditions. Nearly any good well drained soil is suitable, and while there are somewhat divergent opinions among growers, it seems rather generally conceded that plenty of moisture during the growing season is more essential than feeding with fertilizers. A soil deficient in plant food will quite obviously somewhat deplete the reserves stored in the bulb itself and it would be likely to produce blooms in subsequent years somewhat inferior to those produced the first year.

The ground should be deeply worked before planting and when well pulverized, the bulbs may be planted so that they are covered with three or four inches of soil. If fertilizer is to be used, see that it is under the bulbs or off to the side and not in direct contact. It is perhaps best to use a formula rather high in potash.

The soil should be well drained but plenty of moisture must be available preceding the blooming period if the finest blooms are to be produced. Proper cultivation is always beneficial but should consist in frequent shallow stirring of the soil and removal of weeds; deep digging near the plant tends to destroy the long feeder roots which often come quite near the surface.

Daffodils should be dug and replanted every two or three years for best results. Digging may be done as soon as the foliage is mostly dead, usually in late June or early July, and the bulbs may be cleaned and divided about a month later for planting in September or October. While out of the ground, they should be kept in a cool, dry place.

There is considerable confusion prevailing as to the use of the terms, Daffodils, Jonquils, and Narcissi. As the Royal Horticultural Society uses the name Daffodil for all varieties and types of the genus, they will so be considered here. And, of course, Narcissus is the botanical name of all members of the group. Florists frequently incorrectly call yellow trumpet varieties jonquils, but the true jonquils are members of the group having rush shaped leaves and bearing several sweet scented yellow blossoms on a stem. Gardeners frequently call the yellow trumpet varieties Daffodils and the poeticus and poetaz varieties Narcissus. We shall designate all varieties as Daffodils. An abridged form of the Royal Horticultural Society's classification follows:

Division 1—Trumpet as long or longer than perianth segments.

- a. Yellow.
- b. White.
- c. Trumpet yellow, perianth white or nearly white.

Division 2—Incomparabilis. Cup or crown not less than one-third but less than the length of the perianth segments.

- a. Yellow, or yellow and red.
- b. Bicolor, white perianth and yellow cup.

Division 3—Barrii. Same as division 2 but with cup less than one-third the length of the perianth segments.

Division 4—Leedsii. Perianth white with crown white or pale yellow, or in pinkish tones.

- a. Same dimensions as Incomparabilis.
- b. Same dimensions as Barrii.

Division 5—Triandrus hybrids.

Division 6—Cyclamineus hybrids.

Division 7—Jonquil hybrids.

Division 8—Tazetta—includes polyanthus varieties.

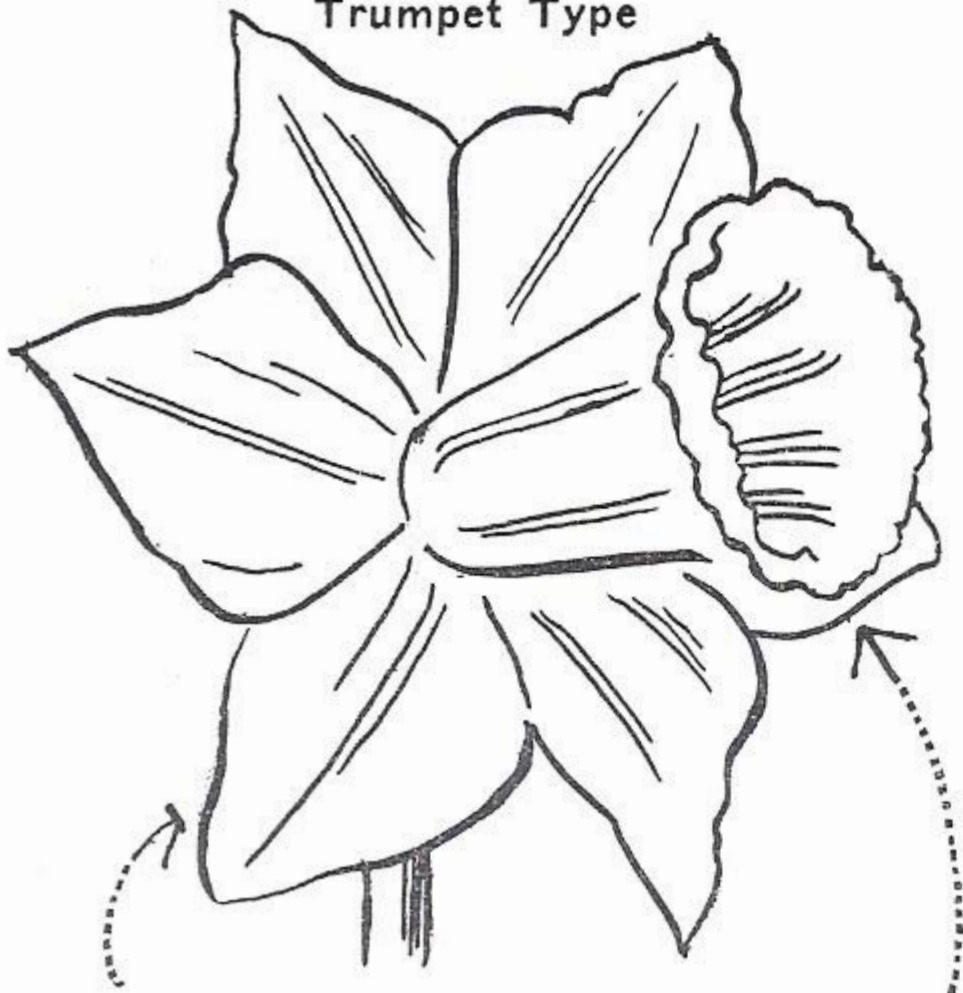
Division 9—Poeticus.

Division 10—Doubles.

Division 11—Various.

BEERSHEBA

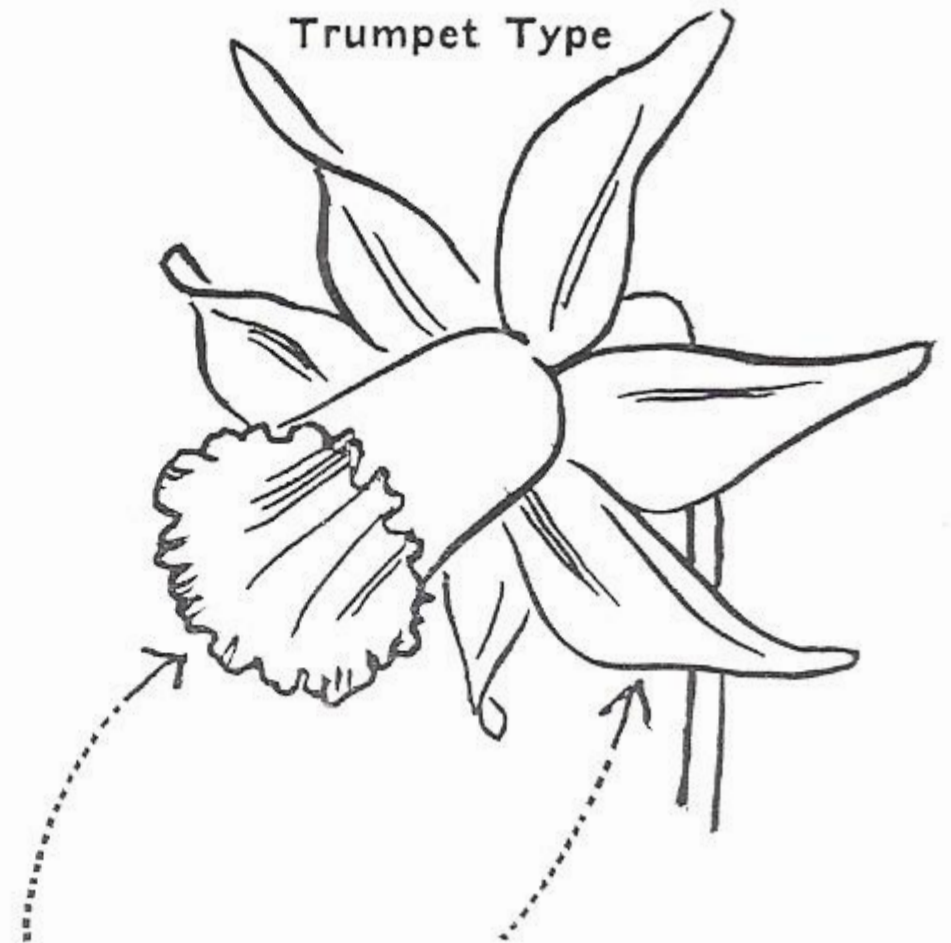
Trumpet Type



Smooth, flat, over-lapping perianth
Smoothly flanged trumpet

FEBRUARY GOLD

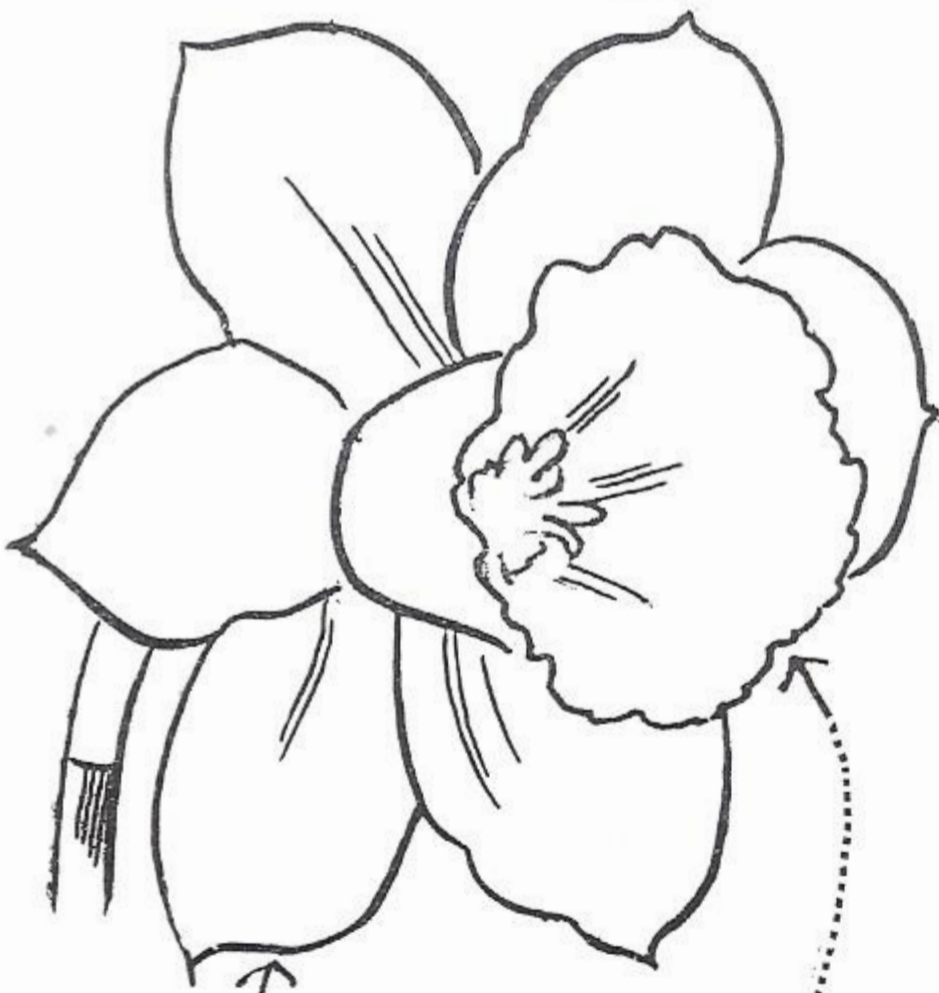
Trumpet Type



Informal perianth with twisted
petals
Frilled trumpet

FORTUNE

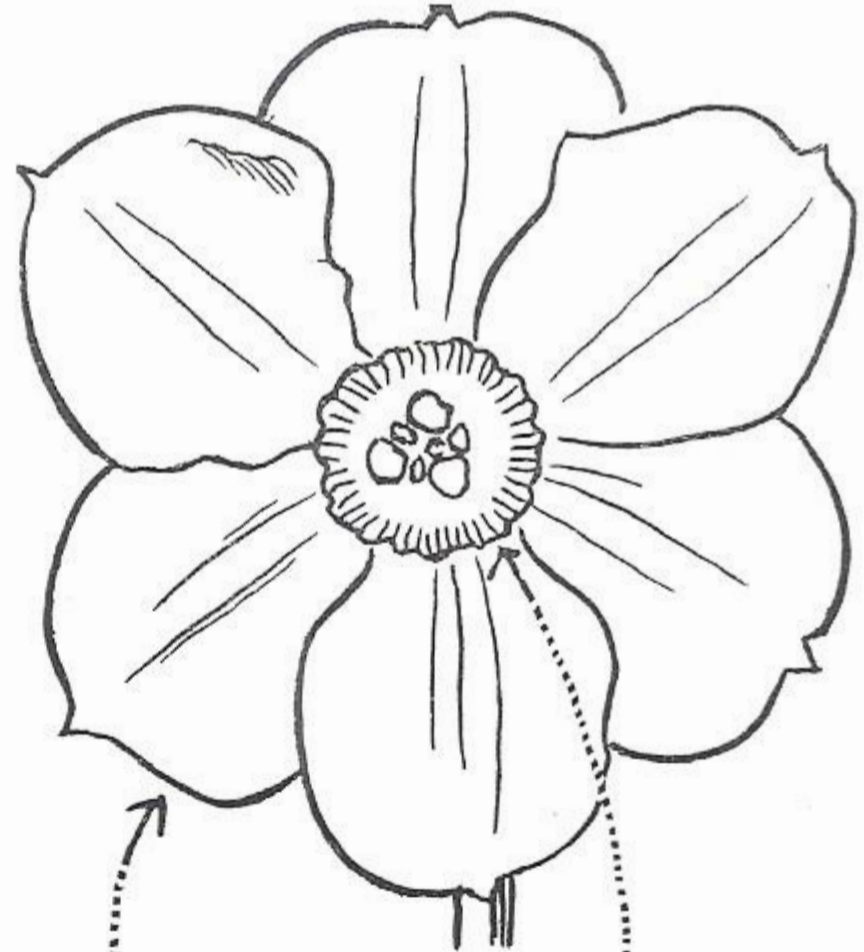
Incomparabilis Type



Perianth
Cup or crown

ACTAEA

Poeticus Type



Perianth
Small eye or cup

The drawings above should serve to indicate to those not familiar with the terms describing the Daffodils their meanings, and give an idea as to the form of the flower in the more popular and better known divisions.



TUNIS PLANTING

Seasonal Notes

THE 1945 BLOOMING SEASON

The Daffodil fancier is apt to conclude after a few years' experience that every season is one of unusual weather. Consequently, a usual season would become unusual! But perhaps it is the ability of the Daffodil to withstand the fickle weather that prevails in early spring that makes it such a favorite. No season is quite ideal and some disappointments must come, and those with the worst weather have some compensations.

The present season started with little promise as our winter rainfall had been far below normal and there were many more days of freezing weather than common, although we had no extremely low temperatures. The cold weather held the flowers back and March came in with almost an excess of rain, there being few days that we did not have some rain and in many in which it rained all day. As a result, we have had the latest blooming season in our memory and along with it, the longest stems and most intense coloring we have ever seen in many varieties.

As always, the yellow trumpets are among the first of the large flowering varieties to bloom. The old **King Alfred** still remains a very satisfactory flower although many others are of finer form and much larger. **Goldbeater** and **Magnificence** are considerably earlier and even the giant **Diotima** and the very smooth textured **Elgin** come a few days before **King Alfred**. **Aerolite** is a flower of delightful form and most desirable for cutting and those who want very large flowers for garden display might do well to plant **Ben Hur** and **Fortress**. Among those of highest quality for form and texture are **Principal**, **Golden City**, **Mortlake**, and **Camberwell King**.

We still feel that **Beersheba** is one of the most beautiful of the white trumpets although visitors are quick to spot the more showy flowers such as **Ada Finch** and **Roxane**. The beautifully modeled **China Clay** and the more creamy heavy smooth textured **Corinth** have been especially good this year. A flower of similar form but with taller stems, smoother finish, and purer white than **Beersheba** is **Cantatrice**. The new and rare **Broughshane** gives magnificent huge blooms on tall stems and is a long lasting flower. We think **Pearl Harbor** is one of the best very late white trumpets and it makes a most desirable garden flower.

Not so many bi-color trumpets are included in our planting and some in this class seem a little less vigorous than we would desire. The pink tinted **Lovencast** is quite a dependable grower, and of much finer form is **Sincerity** which seems to be a good grower but is not very tall. The newer **Trostan** is a splendid long stemmed large pale bi-color, and **Content**, which seems hardly to belong to this class is a beautiful and out of the ordinary flower. **Trousseau** looks quite outstanding.

In the space available, we can consider only a small part of the good incomparabilis varieties, and these but briefly. About the first to bloom is the large deep yellow **Malvern**

SEASONAL NOTES (Continued)

Gold, while **Carlton** and **Havelock** are among the largest and most spectacular. **Trenoon**, **Crocus**, and **St. Issey** are among the deepest in color. **Portmarnock**, **Galway**, and **Temecula** are good new ones. Of the red cups, **Fortune** remains one of the real outstanding varieties and we had hundreds of magnificent blooms of it this year. It is particularly striking as it comes into bloom so early. Several of its numerous progeny have proven good. For garden decoration, **Fortune's Bowl** is very striking, and for cutting few varieties equal in brilliance **Fortune's Blaze**. In size and form **Hugh Poate** is one of the very best. **Diolite**, **Carbineer**, **Porthilly**, **Penquite**, and **Scarlet Leader** have been very good. Of the newer ones, **Bahram**, **Klingo**, **Garland**, **Sudan**, **Indian Summer**, and **Rouge** look especially outstanding.

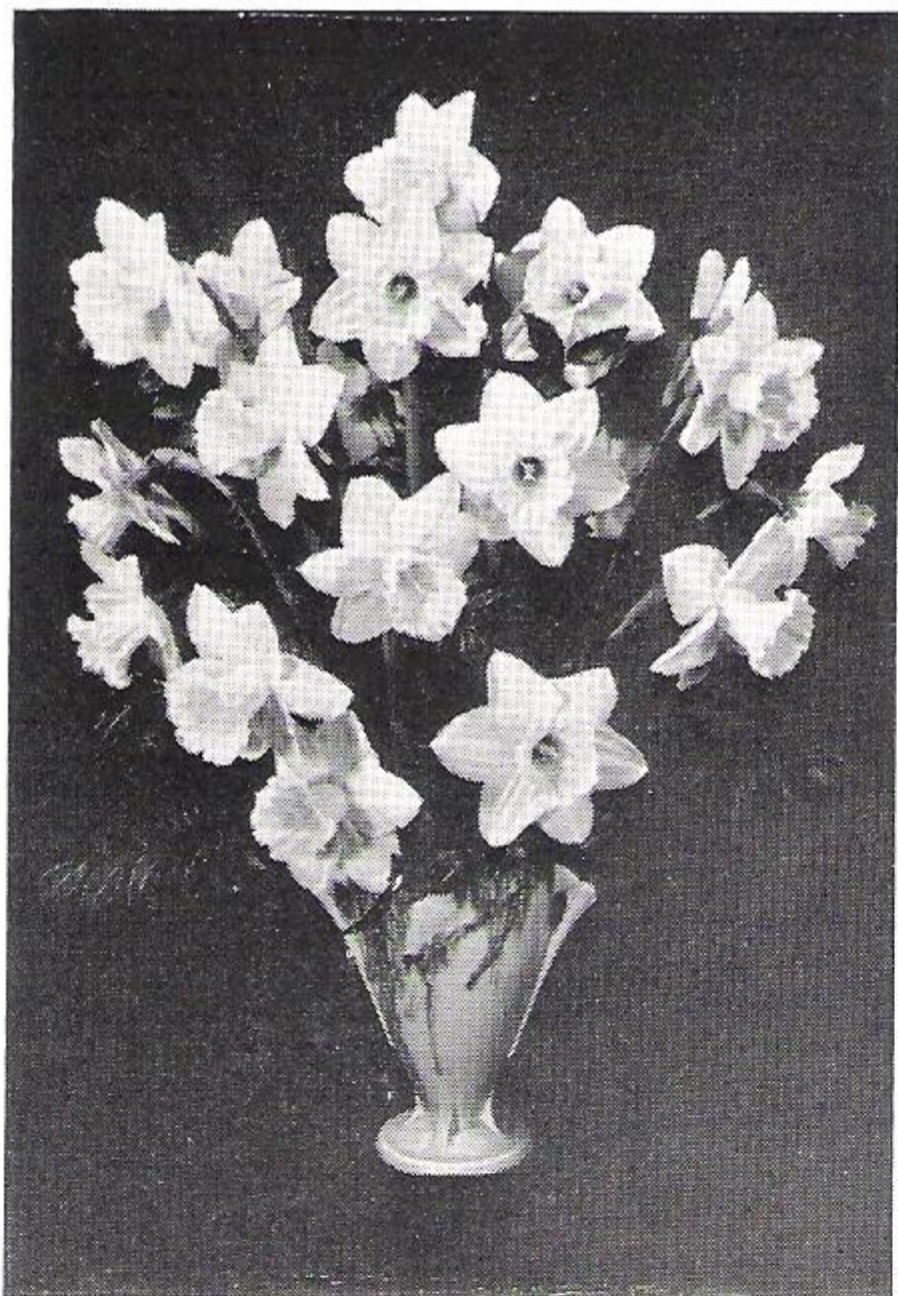
Among the bi-color incomparabilis, there are several very fine white and yellow flowers. **Bodilly** and **Polindra** are always good and are very striking garden flowers. Rather unique is the very large flowered **Coverack Perfection** with its buff salmon rimmed cup. Of those having yellow crowns with orange or red bands we particularly like **Jean Hood**, **Melva Fell**, **Margaret Fell**, **Crusader**, and **Cymric Queen**. Another of this class with very brilliant contrast is **Adler**.

Of the barriis, **Market Merry** is one of our favorites. Others that are very good include **Mr. Jinks**, **Lady Kestiven**, and the newer **Bravura**. We still think **Firetail** one of the finest for cutting.

So many good leedsiiis are now available that it is difficult to choose among them. While no longer new, **Tunis** and **Marmora** are still most desirable. The beautiful early **Brunswick** and the later blooming **Slemish** and **Glenarm** are beautiful flowers and the very large **Daisy Schaffer** is one that fanciers would not want to be without. **Zero** and **Truth** were magnificent beautifully formed flowers. It is in this class that most of the pink Daffodils are found. Of these, **Mrs. R. O. Backhouse** is the best known and one of the best in color. Of better form and larger size is **Pink a'Dell**, while **Wild Rose** has perhaps the best color of the lot. Other good ones include **Shirley Wyness**, **Pink Lady**, **Rose of Tralee** and a number of new importations not yet ready for release.

Of the small crowned leedsiiis there are quite a number of fascinating and ethereally beautiful varieties. As this is written, a number of this group have not yet come into bloom but we cannot forget the enchanting blooms of **Cushendall** from last year. Of much greater size than most of this class, **Sylvia O'Neill** loses none of the beauty and characteristic gracefulness. Of the more familiar sorts, we would not want to be without **Mystic**, **Samaria**, and **Alberni Beauty**.

Since we do not have as many varieties in the other divisions and our space is limited, they will be omitted from our notes this year.



NEW INTRODUCTIONS

We are glad to be able to offer two of our seedlings this year together with a few bulbs of four new varieties from Mr. H. A. Brown of Australia.

CREAM CUP (Mitsch 1945) 4a. Early midseason. A large leedsii with very smooth texture. Broad overlapping pure white perianth. The well proportioned crown is light lemon on opening but passes to cream. Seedling No. 37C17/1 (Beersheba x Killigrew) \$10.00 each.

SILVERDALE (Mitsch 1945) 1b. Early midseason. This flower is built much on the lines of **Content** and has good strong stems which carry the large flowers well. A very long lasting flower either in the garden or when cut. Opens creamy white with light lemon long trumpet but fades to white. Seedling No. 36C2/1 (Beersheba x Kandahar) \$10.00 each.

ALARM (Brown) 2a. Very tall stems with large well formed flower having deep yellow perianth and rich red crown. Only one or two to spare. \$15.00 each.

SHIRLEY NEALE (Brown) 2b. Very tall strong stems bearing good sized broad petaled white flowers with large bowl shaped crown of deep yellow at the rim shading to cream at the base. \$10.00 each.

TANGERINE (Brown) 2a. An early flower of about the same size and height as **Fortune**. Has a larger more spreading and deeper orange crown than **Fortune**. \$7.50 each.

THOONA 2a. A large rich deep all yellow flower. Flower a little like **Malvern Gold** in form and color although the crown is straighter and this is somewhat larger and later blooming. \$10.00 each.

DAFFODILS

Fair harbinger of spring, we wait with bated breath
Thy coming; or, reluctantly we bide our time
And, in our fancy, now beholding winter's death
See thy return with beauty's garb sublime.

Could but the bards of yesteryear behold
Thy chalice cup, or see thy glowing crown;
Or visualize thy vivid eye or trumpet bold
Their words would fail, however great were their renown.

Thy beauty oft enhanced in hybridizers' hands
Surpasses all fantastic dreams of yore;
But still perfection beckons onward, and
We know not what the future holds in store.

But though we may not fathom ever
By what strange alchemy were these changes made,
Yet in our gardens we may still endeavor
To have a glorious Daffodil parade.

—G. E. M.



Photograph

115



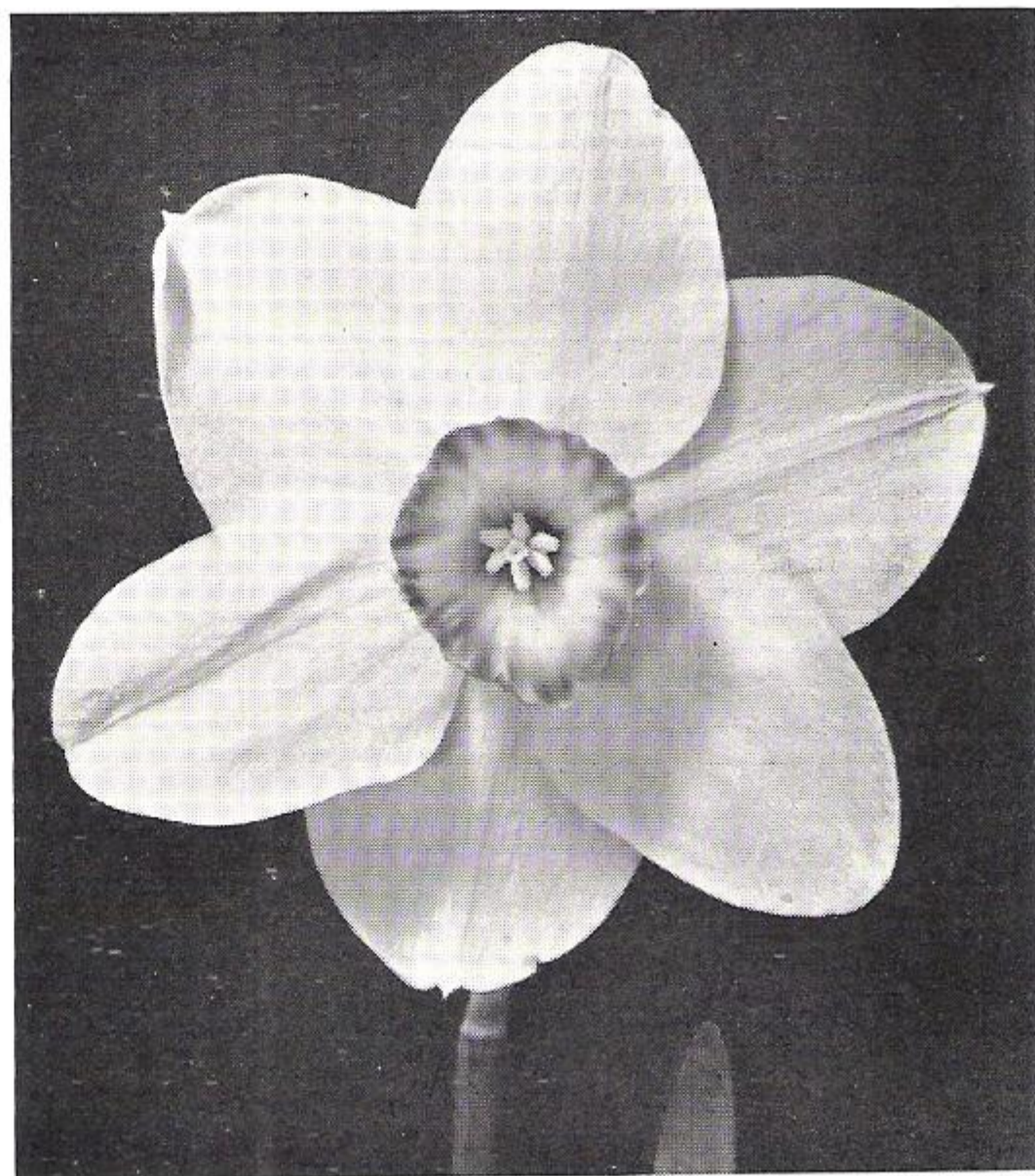
CARLTON



TUNIS



DAISY SCHAFFER (See page 19)



CAMPFIRE



MRS. E. H. KRELAGE

GENERAL LIST OF VARIETIES

In the list which follows, the name of the variety is given in blackface type. The originator's name is in parenthesis. Following this is the classification. For instance, 1a, 1b, and 1c refer to yellow, white, and bi-color trumpets respectively. Other numbers and letters refer to types as indicated by the classification table given on page 3. Then the approximate height in inches is given. These figures will of course vary in season and locality. Following this, the blooming season is indicated. Here again there is a variation according to season and some years varieties will not follow the schedule indicated but this should give a general idea as to the relative blooming dates. In some cases the description which follows may seem contradictory to the blooming season named right after the height. A yellow trumpet may be listed as midseason and then described as a late flower. In this case, **midseason** refers to its blooming period relative to all the generally grown Daffodil group and **late** indicates that it blooms after most yellow trumpets do.

The perianth refers to the part of the flower that we could commonly call the petals and the trumpet, cup, crown, or eye to the center part of the flower.

ACTAEA (Lubbe) 9. Perhaps the largest of the poet varieties. White flower with large eye bordered with red. **15c each.**

ADA FINCH (de Graaff) 1b, 21 in. Early. A tall very large flower with wide rather informal perianth and huge flaring trumpet which opens lemon but fades to white. One of the most showy white trumpet varieties and while not so smooth and refined as Beersheba, it is perhaps the best white trumpet in its season, which is extra early. **\$1.25 each.**

ADLER (de Graaff) 2b, 21 in. Midseason. A very beautiful large flat white perianth with broad overlapping petals and cup of rich yellow shading to rich orange at its margin. The contrast of color is quite striking. This is an outstanding and beautiful flower. **\$1.00 each.**

AEROLITE (de Graaff) 1a, 18 in. Early midseason. A quite early blooming light yellow with wide petals forming a very flat perianth which stands at right angles to the medium sized somewhat narrow trumpet. This is quite distinctive in form from the average run of yellow trumpets and is a very desirable cut flower variety. **15c each.**

AGAWAM (Powell) 1b. Midseason. A nice smooth white flower with overlapping perianth and nicely formed trumpet. Quite tall. **\$5.00 each.**

AGNES HARVEY (Spurrell) 5b, 17 in. Late midseason. A very dainty almost snow white flower with one or two drooping blossoms to the stem. Not new but good and in a class that contains few varieties of sufficiently good constitution to last many years. **20c each.**

ALASNAM (de Graaff) 1a, 21 in. Early. Tall early deep yellow somewhat similar to King Alfred but with broader petals and more upright facing flower. Very strong stemmed. A good cut flower and a good garden variety. **15c each.**

ALBERNI BEAUTY (Hilton) 4b, 24 in. Late. A very tall white flower with wide overlapping perianth somewhat like Samaria in form except that petals are more curled and not as flat as in that variety. This is larger than Samaria and has a lemon rather than a white cup. Few to spare. **\$3.00 each.**

ALCIDA (Backhouse) 3a, 21 in. Late. Large creamy white broad very smoothly textured perianth. Cup is yellow edged with red. A very fine late flower and most desirable in its season as it is at its best after most other varieties are past. **20c each.**

ASKELON (Brodie) 1b, 19 in. Midseason. One of the finer white trumpets. Large flowers with broad perianth and a large trumpet of unusual crepe-like texture. Valuable for hybridizing. None to spare this year.

AVENEL (Brown) 2b, 21 in. Midseason. A good sized flower with white perianth and frilled orange cup. **\$1.25 each.**

BAHRAM (Richardson) 2a, 20 in. Early midseason. A large flower of very fine form having broad overlapping rich deep golden yellow perianth of very nice texture and fine substance; the well proportioned crown being of medium length and nicely frilled with a brilliant orange red color. Strong stiff stems. One of the very finest new things. **\$50.00 each.**

BALWYN (Brown) 2a. A nice smooth yellow overlapping perianth with yellow crown edged with red. **\$25.00 each.**

BEERSHEBA (Engleheart) 1b, 18 in. Early midseason. There are many fine whites but it will be a long time before Beersheba will be displaced. It is surely one of the most beautiful of all Daffodils and a vase of this immaculate flower will not easily be forgotten. Petals are pointed but wide and overlapping and of beautiful texture. Long slender trumpet. The flower is creamy white on first opening and is rather disappointing to those seeing it for the first time, but it soon develops in size and purity, either as a cut flower or in the garden. In rainy weather it is better cut to prevent its being spattered with dirt. A "must have" for all Daffodil fanciers. A winner of many awards on the show bench and a valuable parent in hybridizing. \$1.00 each. \$11.00 per dozen.

BEN HUR (de Graaff) 1a, 19 in. Early midseason. One of the largest and most showy of the yellow trumpet varieties. Quite broad flat perianth held at right angles to the large trumpet. A medium deep yellow flower frequently growing to 5½ inches across. 30c each.

BERNARDINO (Worsley) 2b, 20 in. Late midseason. One of the old varieties but still desirable for garden display or for cut flowers. Creamy white perianth with yellow cup edged light orange. 10c each; \$1.00 per dozen.

BIZERTA (Richardson) 2b. A flower of very fine form and similar to that fine variety, Polindra, but with a buff apricot crown. Very scarce as yet. \$70.00.

BLINKBONNY (Brodie) 3b, 19 in. Late. A very late medium sized flower having a pure white smooth perianth of nice form and a rather small intensely fiery red cup. Very showy and brilliant. \$3.00 each.



ZERO



DICK WELLBAND

- BODILLY** (P. D. Williams) 2b, 20 in. Midseason. Tall, strong stemmed, with fine large flowers of splendid form and texture. One of the most striking bi-color daffodils that we have and now quite moderate in price. Perianth broad and pure white with nicely proportioned cup of clear deep lemon. A flower every Daffodil fancier should have. \$1.25 each.
- BONNY** (Brown) 2b. Good white perianth with yellow crown frilled with orange. \$6.00 each.
- BONNY WINKFIELD** (Brodie) 1a, 18 in. Midseason. A large flowered showy yellow variety. Perianth of quite good form and the trumpet is broad at the base tapering to a wide bell mouth. \$1.50 each.
- BORDER QUEEN** (West & Fell) 2a, 21 in. Late midseason. A large flower with yellow perianth and rather flat yellow crown distinctly banded with orange red. \$1.50 each.
- BRAVURA** (G. L. Wilson) 3b, 18 in. Late midseason. Probably the finest in its class that I have seen. The large white overlapping perianth of fine texture well sets off the well proportioned crown of brilliant fiery orange red. A very well balanced and most beautiful flower. \$30.00 each.
- BROUGHSHANE** (G. L. Wilson) 1b, 25 in. Midseason. From present indications, this appears to be the very best white trumpet Daffodil yet introduced. The very large tall stemmed blossoms have broad smooth perianths and large bell mouthed trumpets. A very nicely proportioned flower for one of its size. An outstanding example of the hybridizer's art. \$200.00 each.

- BRUNSWICK** (P. D. Williams) 4a, 22 in. Early. While one of the first flowers to bloom, this one lasts until some of the later ones are gone. Very tall stiff stems hold the beautiful flowers erect. Broad white overlapping white perianth of fine texture and a well proportioned crown which is light lemon on first opening but fades to white, the margin of the crown retaining its color for some time after the rest of the flower has faded to white. **\$3.50 each.**
- BURWOOD** (Brown) 1c, 18 in. Midseason. Quite a good bi-color trumpet flower, the perianth being white and the trumpet lemon yellow. **\$1.00 each.**
- CAMBERWELL KING** (Brown) 1a, 24 in. Midseason. A rich clear yellow of splendid form, the large perianth being flat and overlapping and the trumpet quite long but well proportioned. A very good large flower.
- CAMPFIRE** (Wilson-Mitsch) 2a, 22 in. Midseason. Campfire is a quite tall stalwart rich yellow and red incomparabilis Daffodil of fine form, having a nicely rounded flat perianth of good texture, and a rather short blazing orange red crown which gives much life to the flower. The blooms, which hold their color well in warm weather, are freely produced on stems about 22 inches tall. Increases rapidly and gives a large number of flowers. A beautiful and showy variety. Parentage: Market Merry x Rustum Pasha. **\$5.00 each.**
- CANTABILE** (G. L. Wilson) 9, 18 in. Late. Frosty glistening white perianth with a red bordered green eye. Very pretty and distinctive. None to spare this year.
- CANTATRICE** (G. L. Wilson) 1b, 21 in. Early midseason. One of the newer white trumpets that has won the very highest awards, including that of a medal for the best flower in the R.H.S. show in London. Much on the lines of Beersheba but smoother and somewhat better form, and with a taller stem. **\$12.00 each.**
- CARBINEER** (A. M. Wilson) 2a, 23 in. Midseason. Very broad overlapping deep golden yellow perianth of very heavy substance, standing at right angles to the brilliant orange red cup. Winner of First Class Certificate from the Royal Horticultural Society among other awards. Good for hybridizing. **\$9.00 each.**
- CARLTON** (P. D. Williams) 2a, 22 in. Midseason. One of the largest of the incomparabilis varieties. Very large broad flat perianth of rich pure lemon yellow and a nicely proportioned frilled crown of the same shade. A most outstanding variety and one that will doubtless be very widely grown in the future. A vigorous grower, free bloomer and good propagator. **45c each.**
- CARMEL** (Brodie) 1c, 16 in. Late midseason. A medium sized flower with white perianth of fine form and texture and distinctively formed smooth light yellow trumpet. Valuable to hybridizers. None to spare this year.
- CARNGHAM** (Brown) 2a, 21 in. Midseason. Quite a showy yellow flower with an orange cup. **\$1.50 each.**
- CARNLOUGH** (G. L. Wilson) 4a. A very nicely formed smooth flower of good size. White except for light pink shadings in the crown at certain stages. Very few available. **\$8.00 each.**
- CEDUNA** (Brown) 2a, 21 in. A tall rich smooth all yellow flower. **\$1.00 each.**
- CHEERFULNESS** (van der Schoot) 10. A double cluster flowered white flower with yellow petals interspersed. **15c each.**
- CHEERIO** (Brodie) 2a, 21 in. Midseason. Tall, large flower of very heavy substance. Very striking and fine at its best. Some seasons the extreme heaviness of its texture seems to tend to crimp the petals slightly and this detracts from its appearance then. Some fine seedlings have resulted from crosses with this variety. **\$1.75 each.**
- CHINA CLAY** (Brodie) 1b, 16 in. Midseason. There are many fine white Daffodils and amongst them, this appears to be one of the best. It is of only medium size and height but is built after the form of its parent, Beersheba, and has still smoother texture and more geometrically perfect form. Very white, appearing to be carved from marble. **\$3.50 each.**
- CHINESE WHITE** (G. L. Wilson) 4b. Midseason. Very large pure white perianth with broad overlapping segments and a good sized saucer shaped crown of white with some green in the center. Very distinctive. **\$80.00 each.**
- CHRISTIAN** (Brodie) 2a. Midseason. A very large smooth textured pure cream yellow of nice form and refined bearing. **\$10.00 each.**
- CHUNGKING** (G. L. Wilson) 3a. Early midseason. A fine large circular formed flower having very broad smooth golden yellow perianth and intense vivid red crown. **\$45.00 each.**



POLINDRA

BODILLY

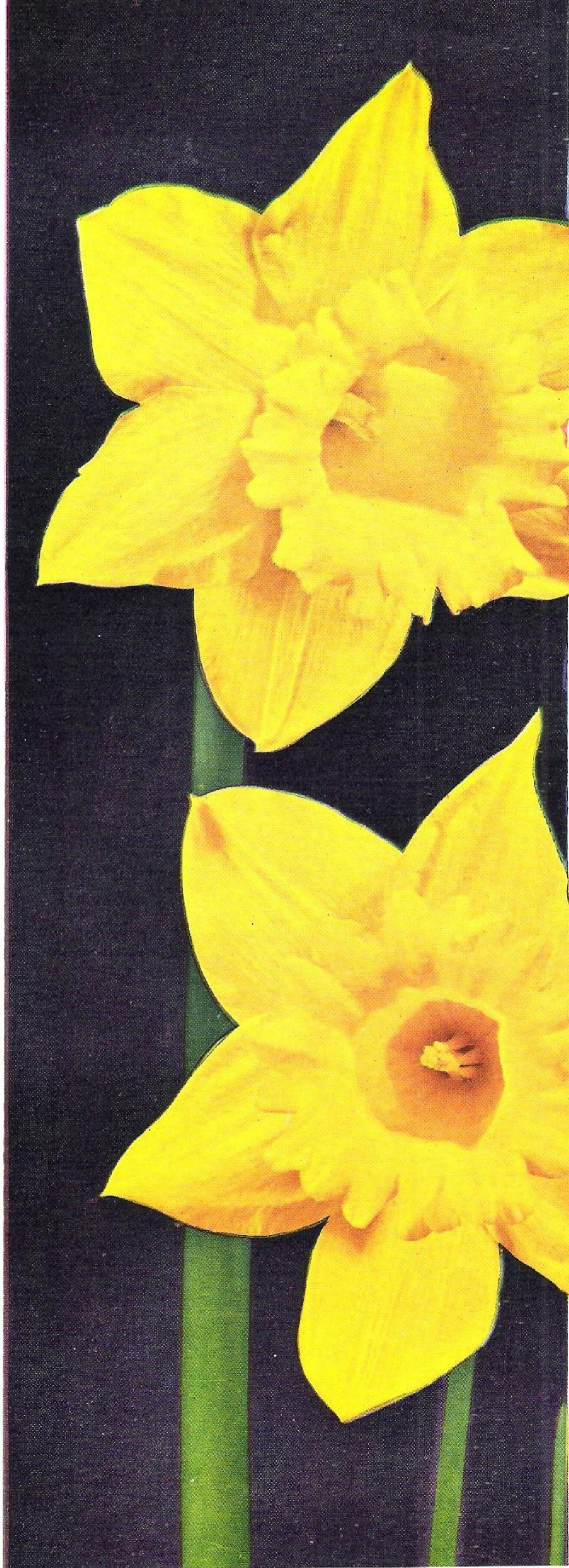
- CICELY** (A. M. Wilson) 4a, 20 in. Early midseason. A rather early flower of modest size and delightful form. Pure white perianth and cup of light lemon when first opening but soon fading to white. Very smooth and refined. An exquisite thing for cutting. **40c each.**
- CLACKMAR** (Wilson-Mitsch) 3a, 20 in. Midseason. A flower somewhat like Campfire but with a bronzy yellow perianth. Good form, widely overlapping, smooth and flat. The saucer shaped crown is a brilliant orange red. Very striking. **\$4.00 each.**
- CLEENA** (Richardson) 4a. Early midseason. A seedling of Fortune and of the same general form and build but of better quality. A good flat white perianth with crown of primrose shading to apricot with green at the base. **\$50.00 each.**
- CLEMENCY** (West and Fell) 4a, 22 in. A good well balanced white flower with a little pink in its cup under favorable conditions. **\$2.00 each.**
- COKEFIELD** (Brodie) 1b, 19 in. Midseason. A very large star-like flower with long white petals and a long trumpet. **\$1.00 each.**
- COLUMBINE** (G. L. Wilson) 4b, 17 in. Late. Fairly tall plant bearing pure white flowers except for the delicate grey-green eye edged with a salmon orange rim. None to spare this year.
- CONTENT** (P. D. Williams) 1c, 24 in. Early midseason. A very tall large flower built on the order of Beersheba but with broader petals and flatter perianth, and blooms on taller stems. While the petals are somewhat twisted so as to eliminate any stiffness, yet the perianth is very smooth and flat in appearance. Opens a pale greenish yellow but fades to nearly white. A very vigorous grower and a most outstanding flower. An exceptionally long lasting bloom. Very outstanding. **\$30.00 each.**
- COPPER BOWL** (Brodie) 2a, 22 in. Late midseason. A large beautifully formed late flower with yellow cup edged red. A descendant of Fortune and while no longer new, it is a very good flower. **\$2.50 each.**
- CORAL ISLAND** (Richardson) 4a. Midseason. A nice pure white flower with a medium sized cup of rosy coral and sea green tones at the base. None to spare this year.
- CORDOVA** (Brodie) 3a, 18 in. Late. Large flower with broad overlapping cream perianth and saucer shaped yellow cup edged orange red. A good late one. **\$3.00 each.**
- CORINTH** (Brodie) 1b, 19 in. Midseason. Another flower of Beersheba type, this one being more creamy in tone, and has a smoother perianth of very heavy almost cardboard-like substance. The trumpet is long and slender. A beautiful outstanding flower. **\$2.00 each.**

- CORONELLA** (Brown) 4a, 20 in. Midseason. An unusual flower of good size. White smooth perianth of good breadth and rather small frilled crown edged with lemon. Should make a very nice cut flower. **\$1.50 each.**
- COTTERTON** (Brodie) 4a. Midseason. A very nicely formed pure white flower that is being used to advantage in hybridizing. **\$25.00 each.**
- COVERACK PERFECTION** (Brodie) 2b, 21 in. Midseason. A very large flower with flat white perianth and large saucer shaped crown of creamy white suffused buff and edged with salmon. A novelty that no doubt will attract attention. **\$4.00 each.**
- COVERACK PRIDE** (Williams) 1a, 19 in. Early midseason. A rich golden yellow Daffodil somewhat like King Alfred but larger. **50c each.**
- CRANBOURNE** (Brown) 2a, 24 in. Midseason. Yellow perianth and orange frilled cup. **\$1.00 each.**
- CROCUS** (P. D. Williams) 2a, 18 in. Late midseason. One of the best all yellow Daffodils. A late bloomer. The large flowers are of much deeper yellow than King Alfred and have very broad flat overlapping perianths with good sized well formed crowns. A very outstanding flower. **\$3.00 each.**
- CROESUS** (J. C. Williams) 2a, 22 in. Late midseason. This fine old flower is well worth growing yet. Its large light yellow perianth of good form sets off a well expanded light orange cup. **15c each.**
- CROWN DERBY** (Brodie) 3b. Late midseason. A large white flower with golden yellow crown bordered with deep orange red. None to spare this year.
- CRUSADER** (West & Fell) 2b, 24 in. Late midseason. A large white flower with nicely overlapping perianth. Medium sized yellow crown with a well frilled rich orange rim. Very pretty. **\$1.50 each.**
- CUSHENDALL** (G. L. Wilson) 2b, 20 in. Late. One of the most beautifully formed Daffodils having well rounded overlapping perianth; white with small rich green eye frilled with cream. An ethereally beautiful flower. **\$7.50 each.**
- CYMRIC QUEEN** (de Graaff) 2b, 20 in. Late midseason. A very nice large flower of smooth texture. The broadly overlapping white perianth shows the orange red frilled yellow crown to good advantage. **\$4.00 each.**
- DAISY SCHAFFER** (de Graaff) 4a, 20 in. Late midseason. This is one of the very largest of the Leedsii varieties and is of good form and bearing. Large white overlapping perianth with a well balanced light lemon crown, which as it ages maintains the lemon tone about half way down while the base of the crown becomes lighter. Vigorous grower and the strong stems hold the flowers up well. **\$3.50 each.**
- DALVEEN** (Brown) 2b, 20 in. Midseason. Medium size flower with white perianth and apricot frilled cream crown. **\$1.50 each.**
- DAMSON** (P. D. Williams) 2a, 22 in. Midseason. A tall variety with broad light yellow perianth and a rich orange bell-shaped cup which reminds one of a fuchsia. One of the most brilliantly colored crowns. **85c each.**
- DARVEN** (Brown) 2a, 21 in. Midseason. Soft yellow with orange rimmed cup. **\$1.00 each.**
- DAVID GRIFFITHS** (Powell) 1a, 18 in. Early midseason. A huge rich yellow quite early flower with an immense bell-shaped trumpet. Good strong stems. **\$3.00 each.**
- DAVID WEST** (West & Fell) 4a, 21 in. Midseason. A most unusual flower with a pure white fairly broad perianth and a cream crown that fades to white but with buff cream shadings. **\$2.50 each.**
- DAWSON CITY** (van Tubergen) 1a. One of the older yellow trumpets but large and of very good form. **40c each.**
- DIANA KASNER** (Mrs. Backhouse) 3a, 22 in. Late midseason. Creamy yellow perianth of good form and a small yellow cup margined with orange red. Vigorous and prolific. One of the best of the older varieties and a fine cut flower variety. **15c each.**
- DICK WELLBAND** (Mrs. Backhouse) 3a, 21 in. Midseason. A good sized flower with white perianth and large very brilliant orange red flaring crown. The perianth is not as broad as we might prefer but the cup is so brilliant that we would not want to be without it. **70c each.**
- DIOLITE** (Miss Evelyn) 2a, 24 in. Early midseason. A giant flower of soft medium yellow with wide flat perianth of very smooth velvety finish suggesting that of St. Egwin. The rather deep crown is of yellow with a distinct band of orange red about an eighth of an inch wide. Very good. **\$5.00 each.**



HELIOS

- DIOTIMA** (de Graaff) 1a, 25 in. Early. Probably the tallest and largest of the very early Daffodils. The huge star-like flowers are borne on very long stiff stems and are of quite good form and texture for so early a flower. Some seasons it blooms about ten days ahead of King Alfred. **50c each.**
- DREAMLIGHT** (G. L. Wilson) 4b, 17 in. Late midseason. Broad smooth glistening pure white perianth with white eye overlaid green and edged red. None to spare.
- ECLAIR** (Mrs. Backhouse) 3b, 19 in. Late midseason. A very pretty medium sized flower of pure white with small bright red eye. **\$1.00 each.**
- EGMONT QUEEN** (J. Gibson) 4a, 19 in. Late midseason. Nice white with frilled light lemon cup. **\$2.00 each.**
- ELGIN** (Brodie) 1a, 19 in. Early midseason. A very large early flower of rich pure deep yellow. Very fine texture resembling rich velvet. **\$1.20 each.**
- EVANSFORD** (Brown) 2b. White perianth with broad flat overlapping petals. Large flaring frilled deep yellow crown. **\$10.00 each.**
- EVENING** (G. L. Wilson) 4a, 18 in. Midseason. A beautifully formed well balanced all white flower. Good sized flat overlapping perianth. Used a good deal in breeding pink cups. **\$2.50 each.**
- FAIRY KING** (A. M. Wilson) 2a, 22 in. Midseason. A flower of about medium size with broad rich yellow perianth and a large brilliant orange red crown. A good one for hybridizing. **\$4.00 each.**
- FEBRUARY GOLD** (de Graaff) 6, 14 in. Early. One of the very first Daffodils to bloom, coming in season when none of the large trumpet varieties are open. A very pretty all yellow flower. **20c each.**
- FIRETAIL** (Crosfield) 3b, 22 in. Late midseason. This one is among the finest of Daffodils for cut flowers. Tall slender stems bearing good sized white blooms of nice form with brilliant red eyes. It should be cut when first open, at which time it is a rather dingy cream in color, but it soon develops in size and whiteness and the cup retains its brilliancy. If left in the open, the red cup soon burns. **20c each.**
- FLAMENCO** (Richardson) 2b. Midseason. A large flower with broad white perianth and brilliant orange crown. None to spare this year.



*KING
ALFRED*

- FORBER** (Powell) 2a, Midseason. Rich deep yellow perianth with deep yellow crown edged orange red. \$4.00 each.
- FORTRESS** (G. L. Wilson) 1a, 21 in. Midseason. A very large quite late blooming trumpet. Large flat overlapping perianth of good form and a big long trumpet. Medium yellow. 85c each.
- FORTUNE** (Ware) 2a, 24 in. Early. Among fanciers, this is perhaps the most sought after Daffodil. A magnificent flower which, while it has been on the market for some years, remains among the most outstanding of all varieties. Blooms very early, the flowers of great size being borne on strong stems two feet tall or more. Perianth rich deep golden yellow of wonderfully smooth finish and very flat. The large crown is rich red-orange, the intensity of coloring varying with the weather and the season. Fine large bulbs. \$1.75 each.
- FORTUNE'S BEAUTY** (Brodie) 22 in. Early midseason. A tall vigorous plant with large flowers having a nice flat perianth and deeply fringed or scalloped crown of orange. \$2.25 each.
- FORTUNE'S BLAZE** (Brodie) 2a, 20 in. Midseason. This one is not quite as tall nor as large as most of this group of Fortune seedlings but is of most intense coloring, the wide smooth perianth being a rich golden yellow and of good form, well overlapping, and the cup of intense rich deep orange red to the base. One of the most highly colored of all the Daffodils that I grow. \$5.00 each.
- FORTUNE'S BOWL** (Brodie) 2a, 22 in. Early midseason. In contrast to Fortune's Blaze, we have in this flower one of the largest of the group. It is hardly as smooth but has a very large broad overlapping perianth of a medium tone of yellow. The crown which is larger and more flaring than that of Fortune is also somewhat brighter in color. A big showy flower. \$2.75 each.
- FORTUNE'S CHAMPION** (Brodie) 2a, 22 in. Midseason. Another flower of good size. Medium yellow with a frilled orange cup. \$2.75 each.
- FORTUNE'S CREST** (Brodie) 2a, 23 in. Early. Nearly as early in blooming season as its parent, Fortune, and of about the same size. The petals are more rounded in this variety and the perianth quite flat and smooth. The large frilled crown is an intense orange red, being deepest in color at the rim. It burns some in the sun but in favorable weather, or if cut, is superb, being an especially good keeper. \$9.00 each.
- FORTUNE'S GIFT** (Brodie) 2a, 22 in. Midseason. Quite distinct from the other flowers of this lot, this one has a large crown that is yellow at the base but with a wide margin of rich orange red. Fine tall stems with well overlapping deep yellow perianth. A very fine flower. \$4.50 each.



- FORTUNE'S PRIDE** (Brodie) 2a, 20 in. Midseason. Still another nice yellow with orange crown. \$1.60 each.
- FORTUNE'S SUN** (Brodie) 2a, 17 in. Midseason. Not as tall as the above but one of the richest in coloring. The petals are exceptionally broad and deep golden yellow being well rounded and somewhat spoon shaped rather than perfectly flat. The large goblet shaped crown is light orange with a deeper orange band. This should be a very good garden flower. \$4.50 each.
- FRANCISCA DRAKE** (Mrs. Backhouse) 2b. Midseason. Large creamy white flower with good sized crown heavily flushed orange. 25c each.
- FRIGID** (G. L. Wilson) 4b. Late. A good sized very late blooming snowy white flower with a small fluted almost flat crown of white with emerald green eye. \$20.00 each.
- GALATA** (Brodie) 3b, 19 in. Late midseason. A very pretty good sized late blooming white flower having a nice flat perianth and an almost flat cup of yellow banded with orange. None to spare this year.
- GALWAY** (Richardson) 2a. Midseason. A fine large golden yellow flower with flat smooth perianth and well proportioned flanged crown. \$35.00 each.
- GARIBALDI** (A. M. Wilson) 2a, 19 in. Late midseason. A rather late medium sized deep yellow flower with orange cup. 50c each.
- GARLAND** (Brodie) 2a. Late midseason. A good large flower with very broad perianth, the petals being so wide as to give the flower a very circular appearance. Soft yellow and smooth texture. The large crown is rich orange shading to golden yellow at the base. A very fine flower. \$25.00 each.
- GAY DANCER** (Reynolds) 3b. Thick wide overlapping white petals with a rather flat yellow cup having an orange rim.
- GERTIE MILLAR** (de Graaff) 4a, 19 in. Late midseason. A real giant with huge white perianth and large buff lemon crown which sometimes takes on a suggestion of pink as the flower ages. 50c each.
- GIBRALTAR** (Richardson) 2a. Midseason. A most symmetrical flower derived from Carbineer with still heavier substance than that variety has. Flat deep yellow perianth of great breadth, and a nicely proportioned orange red crown. \$30.00 each.
- GLENALBYN** (Brown) 2a. Midseason. An immense flower with broad overlapping perianth. The very large flaring golden crown widely banded with orange makes this a striking flower. \$8.00 each.
- GLENARM** (C. L. Wilson) 4a, 19 in. Midseason. A fine large white flower with broad overlapping perianth and a well proportioned crown of medium length. Very white, being one of the purest whites on first opening. \$2.50 each.
- GLENBURN** (Brown) 2a, 19 in. Midseason. One of the good all yellow incomparabilis. Both the broad overlapping perianth and the medium sized crown are of rich deep golden yellow. Very heavy substance. \$1.25 each.
- GODOLPHIN** (P. D. Williams) 1a, 19 in. Early midseason. A very fine smooth medium trumpet of large size. Petals are very broad and the large trumpet is most attractive. Sold too low on this last year and none to spare this season.
- GOLDBEATER** (G. L. Wilson) 1a, 21 in. Early. One of the very first flowers to bloom. Somewhat like King Alfred but usually blooms about ten days earlier. 50c each.
- GOLDEN CITY** (West) 1a, 22 in. Early. A very fine smooth flower of large size and fine form. Rich deep pure yellow. This should be good for breeding early yellows. \$2.00 each.
- GOLDEN FLAG** (G. L. Wilson) 1a, 19 in. Midseason. One of the later blooming yellow trumpets and a very large flower of quite good form. Rich pure medium yellow. A rapid increaser. 35c each.
- GOLDEN PERFECTION** (de Graaff) 7, 24 in. Late midseason. One or two large flowers with very smooth finish and good form typical of jonquil hybrids. \$1.25 each.
- GREEN ISLAND** (Richardson) 4a. A very large flower of great substance and smooth texture. Very rounded petals of great breadth making the flower very circular in form. This fine large white perianth supports a shallow bowl shaped crown which passes from greenish white at the base through white in the middle section to a greenish lemon band at the border. Outstanding. \$90.00 each.
- HADES** (R. O. Backhouse) 2b, 22 in. Late midseason. For brilliancy of color this has very few equals. A good sized well formed creamy white perianth and a brilliant deep red cup. Very fine. \$1.50 each.



MRS. R. O. BACKHOUSE

HALLMARK (J. Hall) 1a, 20 in. Midseason. Another very good yellow of clear color and excellent form coming from the Antipodes. \$1.50 each.

HAROLD BEALE (van Waveran) 1a. Early midseason. A large showy light yellow built along the lines of van Waveran's Giant. 30c each.

HAVELOCK (P. D. Williams) 2a, 22 in. Midseason. One of the finest of the giant yellow incomparabilis. Broad flat clear deep yellow perianth and nicely proportioned crown of the same color. Somewhat like Carlton but perhaps a bit smoother. \$1.25 each.

HELIOS (Engleheart) 2a, 22 in. Early. A very prolific and fine early variety. The tall stems bear large well posed flowers with fine broad flat perianths of rich deep yellow and large crowns of yellow suffused orange. A fine moderately priced variety. 15c each.

HERA (de Graaff) 4a, 20 in. Late midseason. A flower of modest size and great delicacy of form. Opens creamy white with a narrow edging of lemon on the cup but the whole flower soon becomes almost pure white. A splendid cut flower sort. 10c each; \$1.10 per dozen.

- HIS EXCELLENCY** (G. L. Wilson) 1a, 19 in. Midseason. Large well formed rich deep yellow flowers. A very good trumpet variety. **60c each.**
- HOSPODAR** (J. C. Williams) 2a, 20 in. Late midseason. A vigorous growing variety giving flowers of good size rather late in the season. Good yellow perianth and orange yellow crown. **40c each.**
- HONEY BOY** (G. L. Wilson) 1a, 17 in. Midseason. A very good rather late blooming yellow trumpet. The perianth is flat and smooth and stands at right angles to the long slender trumpet which is somewhat reminiscent of Beersheba. Soft clear honey yellow. **40c each.**
- HORTUS** (Bath) 2a. Midseason. Yellow perianth with orange yellow frilled crown. **40c each.**
- HUGH POATE** (Brodie) 2a, 21 in. Midseason. This is surely one of the most outstanding Fortune seedlings that I have seen. While not possessed with the intensity of coloring exhibited by some of the others, this has very large flowers of wonderful form and smooth finish. Very large broad overlapping perianth of clear yellow with a large yellow crown, more or less suffused orange depending on the season. A most striking flower. **\$14.00 each.**
- HUNTER'S MOON** (Brodie) 1a. Midseason. A fine flower of unusual coloring with varying shades of cool luminous lemon. **\$25.00 each.**
- INDIAN CHIEF** (Mrs. Backhouse) 10, 15 in. Midseason. An extra large full double flower of orange and yellow. **15c each.**
- INDIAN SUMMER** (G. L. Wilson) 2a. Midseason. A very fine flower with broad smooth circular perianth of good substance and deep intense golden yellow; and a rather shallow crown of very vivid deep orange scarlet. A gorgeous flower borne on tall stems. **\$40.00 each.**
- INNISFALLEN** (Richardson) 2b. Late midseason. A very fine flower of pure white satin-smooth perianth and a clear yellow crown of fine form. Reported as a more refined Polindra. **\$35.00 each.**
- IRENE COPELAND** (Copeland) 10, 16 in. Midseason. A large double white with lemon petals interspersed among the white ones. Reminds one of a water lily. While not partial to the double varieties, I like this one. **60c each.**
- JEAN HOOD** (West & Fell) 2b, 25 in. Early midseason. One of the tallest of all Daffodils. Large flowers on tall stems. The pure white perianth with its broad petals well sets off the yellow crown bordered bright orange red. A winner of many awards in its homeland of Australia. **\$3.50 each.**
- JECUNDA** (Mrs. Backhouse) 2b. A flower of striking contrast with its white perianth and large orange red crown. **\$6.00 each.**
- JERICO** (Richardson) 3b. Late midseason. A large Barrii with broad pure white rounded perianth and almost flat yellow eye edged with bright red. None to spare this year.
- JOHN EVELYN** (Copeland) 2b, 18 in. Midseason. Perhaps the most sought after of the cheaper varieties of Daffodils. This is a very large flower of immensely broad petals in a round overlapping white perianth. The heavily frilled wide spreading deep lemon cup appears almost double. One of the best. **25c each.**
- KADINA** (Brown) 2b, 19 in. Midseason. A medium sized white flower with white perianth and frilled cup with apricot edge. **\$1.00 each.**
- KANCHENJUNGA** (G. L. Wilson) 1b, 19 in. Midseason. One of the very largest white trumpet varieties. Perianth is made up of extremely broad overlapping petals and trumpet is very immense and flanged, with a deep fringe at its border. Trumpet is pale lemon or ivory on opening. Valuable for hybridizing. **\$15.00 each.**
- KANDAHAR** (Brodie) 1a, 22 in. Early midseason. Huge deep yellow flower with large broad perianth and gigantic spreading bell-shaped trumpet which is sometimes three inches across at the mouth. One of the most showy trumpet varieties bearing its huge flowers at such an angle as to face the observer. Good for hybridizing. **\$2.00 each.**
- KENMARE** (Richardson) 4a. Midseason. Large flower with white perianth and a long crown flushed with pink. None to spare this year.
- KILLIGREW** (P. D. Williams) 2a, 22 in. Early midseason. A very tall early midseason flower with broad rich deep yellow petals of very nice texture and large crown of rich deep orange with a nice frill. A very fine cut flower variety and should prove a good commercial as it makes more increase than the average. **75c each.**
- KILTER** (P. D. Williams) 3b, 20 in. Midseason. A larger flower but somewhat like Firetail otherwise. Makes a fine cut flower. **\$1.50 each.**

- KIMBA** (Brown) 2a, 23 in. Early midseason. One of the earliest of the varieties having brilliant cups. Yellow perianth and bright red orange cup. **\$1.20 each.**
- KING ALFRED** (Kendall) 1a, 23 in. Early. This grand variety is undoubtedly grown in much larger quantities by commercial growers than any other Daffodil. It is now an old variety and individual blooms shown with some of the newer kinds may suffer by comparison, but used in groups either cut or in the garden, it is still so good that it remains one of the most satisfactory all around flowers. Long stems and rich golden yellow flowers. **15c each; \$1.50 per dozen.**
- KING OF MAY** (G. L. Wilson) 1a, 19 in. Late midseason. A large late flowering trumpet of nice form. Some years this is one of the last trumpet varieties to open. **50c each.**
- KING OF THE NORTH** (Brodie) 1a, 18 in. Early midseason. An early large pure yellow of good form. Has proven valuable to hybridizers. **35c each.**
- KNAVE OF DIAMONDS** (G. L. Wilson) 9, 17 in. Late. Blooming as it does, at the end of the season, this is a very worth-while flower. Rather small pure white flowers with rounded reflexed petals and a brilliant red eye. Fragrant. **60c each.**
- LADY KESTIVEN** (Mrs. Backhouse) 3b, 20 in. Late midseason. Pure white perianth with brilliant cherry red cup. Quite the most brilliant and contrasting flower I have. It fades considerably in the sun but is most striking as a cut flower. **\$7.50 each.**
- LIMERICK** (Richardson) 3b. Late midseason. Broad flat pure white perianth and flat eye of intense cherry red. Fine contrast in color. **\$20.00 each.**
- LISBREEN** (G. L. Wilson) 4a. Midseason. One of the best pink cup varieties. Well formed white overlapping perianth and well proportioned crown flushed with rosy orchid pink. None to spare this year.
- LOVENEST** (Mrs. Backhouse) 1c, 19 in. Early midseason. Good sized white flower with creamy lemon trumpet which becomes pink at the frill or rim as it ages. Probably the most moderately priced pink variety. **30c each.**
- LUCIFER** (Lawrenson) 2b. Late midseason. One of the very old ones and not on a par with most of the varieties listed but it is a very vigorous grower and will furnish many decorative flowers. Starry white perianth and orange crown. **75c per dozen.**
- LUCINEUS** (unknown) 2a, 19 in. Late midseason. Rich bright yellow blossoms of large size. Perianth flat and at right angles to the crown. Blooms after most of the other big yellows are gone. **15c each.**
- LUDLOW** (A. M. Wilson) 4a. Midseason. A very large pure white flower of exceptionally fine form. Very broad flat perianth standing at right angles to the nicely proportioned trumpet crown. None to spare this year.
- LUNE DE MIEL** (R. O. Backhouse) 10, 21 in. Late midseason. A tall-stemmed white and lemon double with sometimes a few greenish petals. **35c each.**
- LYNDALE GOLD** (Brown) 1a, 20 in. Midseason. A very good yellow trumpet of smooth finish, good form, and quite good size. **\$1.00 each.**
- LYNDALE STAR** (Brown) 2a, 22 in. Midseason. Somewhat like the above but with a shorter trumpet and lighter yellow throughout. A nicely formed flower. **\$1.00 each.**
- MacMAHON** (de Graaff) 1a, 21 in. Early midseason. Rich deep golden yellow trumpet which is very wide from its mouth to its base. Large bright yellow perianth. Quite spectacular. **75c each.**
- MADAME VAN WAVERAN** (van Waveran) 1c, 19 in. Midseason. Good very large bi-color trumpet. The perianth is creamy white and broad and the large trumpet is light yellow. **\$1.20 each.**
- MAGNIFICENCE** (Engleheart) 1a, 17 in. Early. This and Goldbeater are usually the first two trumpet varieties to open here. Quite large, although not as smooth as most of the later flowers. Worth growing for its earliness. **60c each.**
- MALVERN GOLD** (Brown) 2a, 24 in. Early. This is perhaps the most attractive of any of the large flowered very early kinds in my planting. Rich golden yellow flowers with large flat perianths and short well expanded crowns. A very nice cut flower usually coming about ten days before King Alfred. This should be a most popular commercial variety when stock becomes generally available. **\$2.00 each.**
- MARCH SUNSHINE** (de Graaff) 6. One of the comparatively few cyclamineus hybrids and I think one of the most attractive. The medium sized flowers of rich yellow coloring and attractive form open about the same time or a little before the first large yellow trumpets. **60c each.**
- MARGARET FELL** (West & Fell) 2b, 20 in. Late midseason. A beautiful flower with large broad perianth of white and a yellow saucer shaped crown banded rich orange red. A very fine addition to its class. **\$3.00 each.**

- MARGERY TROON** (Brown) 2a. Tall yellow flower with red cup. Very few bulbs. **\$3.00 each.**
- MARIPOSA** (Reynolds) 4a. A very fine white flower with broad overlapping perianth of fine substance and texture and a nicely proportioned crown well posed on strong stiff stems.
- MARKET MERRY** (Brodie) 3a, 19 in. Midseason. A very rich deep buff yellow or old gold broad overlapping perianth of large size, and a brilliant deep red cup characterize this fine flower. Of much value for hybridizing. Very few to spare this year. **\$6.00 each.**
- MARMORA** (Brodie) 4a, 22 in. Early midseason. Very refined flower with pure white broad petals and a medium sized lemon cup which passes to almost pure white as the flower ages. Very tall strong stems and a vigorous grower. **40c each.**
- MARY LONGSTREET** (Mrs. Backhouse) 2b, 20 in. Midseason. A cream perianth of good form quite well overlapping sets off the large brilliant orange cup. At its best, a very striking flower. **\$3.00 each.**
- MATAPAN** (Richardson) 3b. Midseason. Valuable both for its unusual beauty and for the reason that it is earlier than nearly all other flowers of its type. Extremely broad pure white petals make a very rounded flower, and the rather small brilliant fiery red cup makes for a very contrasting beautiful bloom. Very scarce. **\$35.00 each.**
- MELVA FELL** (West & Fell) 2b, 22 in. Midseason. Very beautiful large white flower with a well proportioned yellow cup banded red. Somewhat similar to Jean Hood but more refined and beautiful in form than that variety and not quite as tall or early. **\$5.00 each.**
- MERKARA** (Mrs. Backhouse) 2a, 18 in. Midseason. Good flower with flat sulphur yellow perianth and good sized orange cup. **60c each.**
- MITE** (Booth?) 6, 9 in. Small, very early dainty little flower with much the form of its parent, cyclamineus. I know of no place to obtain additional stock of this and believe the nurseries holding the original stocks have lost it. Not more than one bulb to a customer this year and only about ten bulbs to spare. **\$5.00 each.**
- MORAY** (Brodie) 1b, 19 in. Early midseason. One of the largest of the white trumpet varieties. **Sold out.**
- MORTLAKE** (West) 1a, 22 in. Early midseason. One of the most bold and showy trumpet varieties. Large flower of fine form and substance in a rich pure yellow. The nicely frilled trumpet adds a distinct attraction. **\$3.00 each.**
- MR. JINKS** (Brodie) 3b, 21 in. Late midseason. Pure glistening white very broad overlapping perianth possessing the sheen we associate with the poets. The red on the edge of the cup serves to enhance the beauty of the flower. Large for one of its type. **\$5.00 each.**
- MRS. BARCLAY** (Backhouse) 2b, 18 in. Late midseason. Cream white flat perianth with almost flat yellow crown edged orange. Very nice for cutting. **15c each.**
- MRS. E. H. KRELAGE** (Krelage) 1b, 20 in. Midseason. Often referred to as the white King Alfred. Perhaps not to be compared to some of the newer whites in size and form, but this has very smooth textured flowers and they are borne on tall strong stems. Very worth while. **30c each.**
- MRS. NETTE O'MELVENY** (Mrs. Backhouse) 4b, 22 in. Midseason. Large long stemmed flowers of white with yellow cup edged red. One of the more popular and one of the best of the older varieties. Very prolific. **10c each.**
- MRS. R. O. BACKHOUSE** (Mrs. Backhouse) 4a, 21 in. Late midseason. White perianth of fair form and long crown of rich salmon pink. While not as nicely formed a flower as we have in other colors, it is certainly the best pink at anywhere near its price. Very worth while. **\$1.50 each.**
- MYSTIC** (G. L. Wilson) 4b, 20 in. Late. One of those dainty delicate flowers to which one cannot do justice by a description. Broad creamy white with quite good sized flat white crown edged with a border of pinkish orange. **\$1.25 each.**
- NANNY NUNN** (Mrs. Backhouse) 3a, 18 in. Late midseason. A showy flower of medium size having rounded creamy white perianth and a good sized orange cup. **15c each; \$1.50 per dozen.**
- NIPHETOS** (P. D. Williams) 4a, 19 in. Midseason. A flower good both for exhibition and as a garden plant. Tall stems bearing large flowers of very fine form and texture. Broad flat white perianth and light lemon crown. Vigorous and prolific. **\$1.25 each.**
- NISSA** (Brodie) 2b, 21 in. Midseason. In form this is a little like Niphetos but is a somewhat smaller flower and this has a rich yellow crown. Very nice form. **60c each.**

- OLYMPIA** (van Waveran) 1a, 20 in. Early midseason. One of the better ones of the old favorites. Very large flowers with light yellow perianths and very large deeply frilled trumpets of a deeper shade. **15c each.**
- PEARL HARBOR** (Wilson-Mitsch) 1b, 20 in. Late midseason. Although there are many fine whites on the market, we feel this is quite distinctive from others. While bold and showy, nevertheless this is possessed of refinement and beauty. The large white flat perianth (4½ to 5 inches) has good texture and sets off the big flaring frilled trumpet of rich ivory. Strong stems about 20 inches tall display the blooms to good advantage. Opens when most other trumpet varieties are gone. From Corinth x Kanchenjunga. **\$5.00 each.**
- PEKING** (de Graaff) 3b, 18 in. Late midseason. Pure white perianth that is flat and of very heavy texture. An extra large brilliant orange red crown. Very showy. **\$10.00 each.**
- PENQUITE** (P. D. Williams) 2a, 19 in. Early midseason. Large quite early flower of rich deep yellow. Very heavy textured broad perianth and large saucer shaped crown of quite rich orange. In common with many orange cups, it fades some in bright sunlight. A valuable variety for hybridizing. **\$3.00 each.**
- PHANTASY** (Crosfield) 1b, 18 in. Midseason. A nice white flower with frilled cup **\$1.00 each.**
- PINK A'DELL** (Brown) 4a, 20 in. Midseason. Large flower of good form, the perianth having quite broad overlapping petals and the trumpet shaped crown opens lemon but soon turns to pink. One of the best pinks. Withheld for increase this year.
- POLINDRA** (P. D. Williams) 2b, 23 in. Midseason. Very tall stems with large flowers having a wide flat overlapping white velvety textured perianth and a well proportioned rich lemon yellow crown. A noted prize winner. Undoubtedly one of the most perfect of all Daffodils. **\$5.50 each.**
- POLAR SEA** (Brodie) 4b. Late. Another very white flower after the type of Samaria and Silver Salver. **\$2.50 each.**
- PORTHILLY** (P. D. Williams) 2a, 19 in. Early midseason. Good sized flowers with pure yellow broad perianths and good sized crowns of fiery orange red. A brilliantly colored variety and a good increaser which should make it a fine commercial sort. **\$2.50 each.**
- PORTMARNOCK** (Richardson) 2a. Midseason. A very large tall strong stemmed rich golden yellow flower of splendid form. Large flat broad perianth and good sized crown of slightly deeper color. **\$15.00 each.**
- PRINCIPAL** (G. L. Wilson) 1a, 20 in. Midseason. One of the very best yellow trumpet varieties. Not as large as some but with finer form and smoother texture than most trumpets. **\$1.25 each.**
- RED RADIANCE** (Brown) 2a, 21 in. Early midseason. A large flower of good form, the perianth opening yellow and fading to almost white. The crown is a rich bright orange red that seems to fade but little. Good lasting qualities. **\$4.00 each.**
- RED SHADOW** (Mrs. Backhouse) 2a, 18 in. Late. Very large flower with broad light yellow perianth and good orange cup. A very fine variety in its season. **30c each.**
- ROMA WYNESS** (West & Fell) 2b, 24 in. Midseason. The flowers are large and smooth with broad white overlapping perianths, and medium sized saucer shaped crowns of primrose with margins of salmon. Very symmetrical. **\$6.00 each.**
- ROSE OF TRALEE** (Richardson) 4a, 19 in. Late. Large flowers of very nice form, the perianth being quite broad and flat and the rather long crown is a pinkish buff. Only two or three to spare at **\$15.00 each.**
- ROSTOV** (Richardson) 4a. Midseason. A fine large flower of pure white with a well shaped perianth and crown. **\$30.00 each.**
- ROXANE** (van Tubergen) 1b, 18 in. Midseason. A very large white trumpet variety. The whole flower is creamy white in tone, the perianth having quite exceptionally broad petals and the trumpet being large and rather bell shaped. **\$1.50 each.**
- ROYAL RANSOM** (Richardson) 2a. Early midseason. Tall strong stems bearing very large flowers of fine form. Broad smooth perianth of fine quality and of unusual buff color with a dull orange red crown. **\$50.00 each.**
- RUBRA** (Brown) 2b, 24 in. Late midseason. Large flower with finely moulded smooth flat white perianth and a wide expanded smallish primrose apricot crown bordered with a deeper tone of apricot. **\$9.00 each.**

- RUSTUM PASHA** (Miss Evelyn) 2a. Midseason. Very large intense deep yellow perianth, with a rich orange red crown which is very resistant to fading. A fine garden flower. \$9.00 each.
- ST. AGNES** (P. D. Williams) 8, 22 in. Midseason. Two or three good sized white flowers of nice texture with red eyes poised on each tall stem. One of the best of this class. \$1.50 each.
- ST. EGWIN** (P. D. Williams) 2a, 25 in. Late midseason. One of the finest of the late Daffodils. Very tall strong stems with giant flowers having rather small crowns. The whole flower is rich pure soft yellow with wonderfully smooth texture. Nice flat overlapping perianth. \$1.50 each.
- SAMARIA** (Brodie) 4b, 19 in. Late. An all white flower except for the green center of the small crown. One of the most attractive of the small crowned Leedsii's. Very broad overlapping white perianth with small saucer shaped crown with green center and white fluted rim. \$1.50 each.
- SCARLET GEM** (P. D. Williams) 8, 20 in. Midseason. Tall stems bearing three or four medium sized light yellow blossoms with red eyes. \$1.00 each.
- SCARLET LEADER** (Mrs. Backhouse) 2a, 17 in. Early midseason. Those who want plenty of color are likely to fancy this Daffodil. A quite early to midseason flower with large cream perianth and very large widely expanded vivid orange red cup which holds its color quite well in the sun. The perianth is hardly as smooth as it might be but the contrast of color is so striking that nearly everyone wants it. \$10.00 each.
- SCARLET QUEEN** (West & Fell) 2a, 23 in. Late midseason. Another large showy flower, this one having a large light yellow perianth with very large flaring yellow crown banded orange red. \$2.75 each.
- SHADEEN** (Wilson-Mitsch) 4a. White perianth with quite nicely proportioned smooth crown of creamy buff with just a suggestion of pinkness. Being a seedling of Evening, this has possibilities for breeding pinks. \$4.00 each.
- SILVER CHIMES** (Martin) 5b. A most delightful flower of ethereal beauty coming near the end of the season. Each stem is surmounted by five to ten or more white drooping blossoms of beautiful form. Entirely distinct from anything else I grow. \$1.50 each.
- SILVER STAR** (Mrs. Backhouse) 4a, 19 in. Early midseason. Broad creamy white perianth with large crown of creamy lemon. One of the finer older varieties. 20c each.
- SILVER WEDDING** (G. L. Wilson) 4a, 17 in. Midseason. Very nice all white flower which appears more like a trumpet than a Leedsii variety. Medium sized. \$6.00 each.
- SINCERITY** (Lower) 1c, 18 in. Late midseason. Very good broad creamy white perianth and rather long bell shaped trumpet of soft light lemon. One of the smoothest and best of the bi-color trumpets. \$1.50 each.
- SLEMISH** (G. L. Wilson) 4a, 18 in. Late midseason. While not as strong a grower in all sections of the country as it might be, this is one of the most beautiful white Daffodils. Perianth is very broad and overlapping and the crown which is almost of trumpet length, is distinctly whiter than the perianth when fully developed. A noted prize winner. \$5.00 each.
- SHIRLEY WYNESS** (West & Fell) 4a, 18 in. Midseason. A very pretty flower with its nice flat white perianth and medium sized very heavily frilled and fringed crown, which on first opening is light lemon but the frill soon becoming suffused with pink. \$6.00 each.
- SORLEY BOY** (G. L. Wilson) 1a, 22 in. Midseason. A good tall yellow of nice form. Has been much used for breeding good yellow trumpets. \$1.00 each.
- SOULT** (P. D. Williams) 2a, 21 in. Early midseason. Medium sized but with unusually smooth broad overlapping perianth and medium sized crown. The whole flower is of rich pure yellow. Valuable to hybridizers. \$1.25 each.
- STATENDAM** (de Graaff) 1a, 20 in. Early midseason. A very large flower with exceptionally large trumpet. Rich deep yellow. 50c each.
- SYLVIA O'NEILL** (G. L. Wilson) 4b, 21 in. Late midseason. One of the forerunners of a new race of small crowned Leedsii's. Most of this type have been small flowers but this has a large broad white perianth and a good sized nearly flat crown of white with a narrow border of lemon. Very pretty. \$16.00 each.
- TAMINO** (Brodie) 2a. Midseason. Fine smooth deep yellow perianth and rich deep red crown. \$35.00 each.
- TELOPEA** (West & Fell) 2b, 23 in. Early. Very tall early flower with large cream perianth and good sized orange crown. This lasts a long time on the plant. \$1.00 each.

- TEHACHAPI** (Reynolds) 4a. Large flowers with broad overlapping pointed petals stained yellow near the crown, which is long and narrow. **\$5.00 each.**
- TEMECULA** (Reynolds) 2a. A fine new addition to the yellow incomparabilis class. Tall stems with uplifted flowers of most perfect flat smooth perianths and nicely flanged crowns.
- THALIA** (van Waveran) 5, 17 in. Midseason. Beautiful drooping pure white flowers borne in clusters of usually about three to a stem. **25c each.**
- TORCH** (Engleheart) 2a. An old timer almost a counterpart of Lucifer but this has a yellow rather than white perianth. Desirable for woodland or border planting. **75c per dozen.**
- TRENOON** (P. D. Williams) 2a, 23 in. Early midseason. Along with Crocus this is one of the deepest in color and finest in form of the incomparabilis varieties. It is perhaps a little deeper in color even than Crocus and is earlier and taller but not quite as large. An outstanding flower. **\$5.00 each.**
- TRESSERVE** (Heere Bros.) 1a, 20 in. Early midseason. Large rich deep yellow flower with huge flaring trumpet. Showy. **15c each.**
- TREVISKY** (P. D. Williams) 2a, 22 in. Early midseason. Tall rich deep yellow with flat smoother perianth and medium sized brilliant orange cup. A parent of some of the best new seedlings. **\$2.50 each.**
- TROSTAN** (G. L. Wilson) 1c, 22 in. Late midseason. One of the very finest trumpet varieties. Tall stems with large flowers having broad overlapping smooth white perianths and good flaring trumpets of soft creamy lemon. **\$12.00 each.**
- TROUSSEAU** (P. D. Williams) 1c. Early midseason. Broad flat pure white perianth of satin smooth texture and a neatly flanged trumpet opening soft yellow and passing to buff pinkish cream. Not more than one to sell. **\$75.00 each.**
- TRUTH** (G. L. Wilson) 4a, 22 in. Midseason. Another of the most beautiful white Daffodils. Last year I had numbers of superbly beautiful blooms of this, the very broad snowy white perianths of large size made a lovely picture with the well proportioned white crowns standing out at right angles to them. Opens somewhat creamy in tone but soon passes to white. **\$8.00 each.**
- TUNIS** (P. D. Williams) 4a, 22 in. Early midseason. While no longer new, this magnificent variety is still one of the great favorites, both of ourselves and with visitors. Very tall large flower with cream perianth and large flaring yellow crown which soon fades to cream except the frill which becomes a rich apricot buff. Good keeper. **60c each.**
- VERA WEST** (West & Fell) 2a, 22 in. Early midseason. Very broad yellow perianth with wide overlapping petals and a nice large expanded crown of yellow with more or less orange near the brim depending on the season. **\$1.25 each.**
- WARATAH** (West & Fell) 2b, 22 in. Midseason. Large yellow perianth with rich orange bordered crown. **\$2.00 each.**
- WARFLAME** (West) 2b, 23 in. Late. Large flowers with creamy white perianths and orange frilled crowns. Colorful and showy. **\$2.00 each.**
- WARWICK** (de Graaff) 1a, 21 in. Midseason. Somewhat like King Alfred but considerably deeper yellow, a little later in blooming, and perhaps with slightly larger flowers. A fine yellow trumpet variety. **15c each.**
- WHITELY GEM** (Brodie) 2a, 22 in. Early. One of the rather numerous progeny of Fortune, this being one of the very earliest, usually coming a few days in advance of Fortune itself. A somewhat smaller flower with wide but pointed petals forming a nice flat perianth of rich yellow, and a crown of orange yellow with quite a brilliant orange band extending about half way down. A fine cut flower. Early, vigorous and prolific. **\$1.50 each.**
- WHITE WITCH** (Mrs. Backhouse) 5, 18 in. Midseason. A very dainty white triandrus hybrid. Very few bulbs. **60c each.**
- WILD ROSE** (Brodie) 4q, 18 in. Late midseason. Rather a smaller flower than some of the other new pinks but the best in color. A quite well formed flat white perianth and a medium sized crown of pretty wild rose pink. The heavy demand has made stock of this very scarce. None to spare this year but I hope to be able to offer it again next season.
- YELLOW POPPY** (Cartwright and Goodwin) 2a, 18 in. Midseason. Soft light yellow flower with narrow orange rim on the crown. **20c each.**
- ZERO** (G. L. Wilson) 4a. Early midseason. A very large white of finest form. Very scarce. **\$30.00 each.**
- ZOE** (West) 2a. A tall creamy yellow flower with light orange yellow crown. Quite a large showy variety. **\$3.00 each.**

SPECIES

CANALICULATUS. One of the species blooming rather late in the season and bearing clusters of very small white flowers with yellow cups. Very sweetly scented. A dwarf grower. 10c each.

BULBOCODIUM CONSPICUUS. The yellow hoop petticoat Daffodil. Very narrow inconspicuous petals with a large deep yellow trumpet which dominates the flower. 10c each.

JONQUILLA SIMPLEX. Clusters of sweetly scented small deep yellow flowers. Rush like leaves. 10c each.

MIXED SEEDLING DAFFODILS

While we do not grow Daffodils in mixture, we have been doing rather extensive hybridizing for several years and out of the many seedlings which bloom, but a comparatively few are selected for further trial. The bulk of these seedlings are offered for sale here as mixed bulbs; and while one must not expect them to compare in quality with the best of the named varieties, there are many flowers among them that are quite equal or superior to most of the older sorts. A number of customers who bought these two years ago have given quite glowing accounts of the quality of the flowers grown from them. Since each seedling is, technically at least, different from its neighbors, even if from the same seed pod, one may be assured of getting quite a variety of flowers out of a few dozen of these bulbs. They offer good material for garden decoration and often splendid blooms for cutting.

The supply of these bulbs is necessarily limited and we are unable to offer them every year as we can dig this seedling stock only on alternate years until more help is available. These are good blooming size bulbs and many will give two or more blooms.

Mixed yellow trumpet seedlings: \$1.50 per dozen.

General mixture of seedlings: \$1.50 per dozen.

CROCUS

We have a limited quantity of spring flowering crocus to offer in mixture only. Most of these bulbs are grown as separate varieties and you can be assured of not getting nearly all one color as orders will be made up individually by taking bulbs of several different varieties to fill each order. Mixed colors, 75c per dozen.

LILIES

Arrangements have been made with a prominent local Lily grower to offer bulbs of the following Lilies:

CANDIDUM. The well-known Madonna Lily. A favorite pure white fragrant Lily which should be planted early as it produces a rosette of leaves in the fall or winter. Bulbs should be covered only an inch or two. A well drained non-acid soil is desirable for best growth. Good blooming size bulbs 50c each; \$5.00 per dozen.

HENRYI. A soft yellow with darker markings and greenish center. A vigorous grower making tall spikes with many well recurved blossoms. One of the easier lilies to grow. 50c each; \$5.00 per dozen.

LONGIFLORUM "ESTATE LILY". A taller more vigorous growing form of the Easter Lily. Large white trumpet shaped blossoms. Should be successful where any other form of the Easter Lily can be grown outside. Plant about eight inches deep in well drained soil. Blooming size bulbs, \$1.25 each.

PRIMROSE SEED

We have one of the better strains of Polyanthus primroses and offer seed in mixed colors at 50c per packet.



NARCISSUS, FORTUNE