

1921.



BARR'S

GOLD MEDAL

DAFFODILS

Daffodil
Peter Barr.

AND NEW SEEDLING NERINES

BARR & SONS

11, 12 & 13, King Street, Covent Garden, London.

Nurseries, Taplow, Buckinghamshire — Visitors Invited.

GENERAL INDEX.

	PAGE
Practical Hints on Bulb Culture Outdoors and in Pots and Boxes ...	1
" " " " " " in Barr's Peat-fibre Mixture... ..	2
" " " " " " Naturalising Bulbs in Grass, Woodlands, etc. ...	3
COLLECTIONS OF DAFFODILS for Flower Borders, Pots and Bowls...	4
DAFFODILS most suitable for early Forcing	4
" Special Flower Border Mixture	4
" Collections for Naturalising and Inexpensive Mixtures...	5
MINIATURE DAFFODILS for the Rock Garden, etc.	5
NEW SEEDLING DAFFODILS	6
GENERAL LIST OF DAFFODILS	9
NERINES, beautiful Autumn-flowering Bulbs	30
Hardy Spring-flowering Carpeting and Bedding Plants	33
BOWLS AND VASES FOR BULBS	35
Manures, Soils and Peat-fibre Mixture	36
Useful Tools for Bulb Planting	36
Coloured Daffodil Plates	37
Special Notices and Terms of Business	37
BOOKS ON DAFFODILS	37

ALPHABETICAL INDEX OF DAFFODILS offered in the following pages

PAGE	PAGE	PAGE	PAGE
Abadea .. 6	Creusa .. 6	Herrick .. 27	Mountain Maid .. 21
Adelgar .. 6	Cresus .. 15	Hoboken .. 10	Mrs. Buchanan .. 14
Admiration .. 25	Cyane .. 6	Homespun .. 16	Mrs. D. V. West .. 7
Adonia .. 17	Cyclamineus .. 24	Hoop Petticoat .. 29	Mrs. G. H. Barr .. 12
Agnes Harvey .. 23	Cygnat .. 13	Horace .. 27	Mrs. H. D. Betteridge .. 12
Ailsa .. 11	Cynosure .. 15	Horizon .. 7	Mrs. Langtry .. 21
Albatross .. 17	Czarina .. 20	Horsfieldii .. 13	Mrs. Robert Sydenham .. 12
Albus (<i>Triandrus</i>) .. 23	Danesfield .. 6	Hymen .. 13	Music .. 21
Alice Knights .. 11	Dell .. 17	Ibis .. 27	Myra .. 21
Alope .. 6	Discus .. 6	Icepeak .. 21	Nanus .. 11
Alpine Snow .. 6	Dorothy .. 18	Incognita .. 18	Nannie Nunn .. 7
Amabilis .. 20	Dosoris .. 18	Intermedius Sunset .. 26	Nestor .. 16
Amazon .. 20	Double White Poeticus .. 29	Ivorine .. 7	Nightingale .. 7
Anchorite .. 17	Double Yellow Daffodil .. 28	Janet Image .. 21	Noblesse .. 7
Angel's Tears .. 23	Dubloon .. 28	Jasper .. 18	Nysa .. 18
Anteros .. 14	Duchess of West- minster .. 20	Jaune à Merveille .. 25	Obvallaris .. 11
Argent .. 28	Duke of Bedford .. 13	J. B. M. Camm .. 13	Occident .. 18
Ariadne .. 20	Early Yellow Hoop Petticoat .. 29	Jonquilla .. 24	Odorus Campanelle .. 24
Aspasia .. 25	E. T. Cook .. 13	Juliet .. 28	" " plenus .. 29
Autocrat .. 14	Edna .. 26	Juncifolius .. 29	" " rugulosus .. 24
Aylmer .. 6	Eggs and Bacon .. 28	Kestrel .. 7	Olivia .. 18
Barbara Holmes. <i>See</i> Lady Godiva.	Elaine .. 20	King Alfred .. 10	Olympia .. 11
Barrii Conspicuous .. 17	Eldred .. 6	Kingdom .. 7	Orange Cup .. 26
Beauty .. 15	Elgiva .. 18	Klondyke .. 25	Orange Glory .. 8
Bedouin .. 15	Elvira .. 25	Lachlan .. 16	Orange Phoenix .. 28
Belarius .. 15	Emperor .. 10	Lady Audrey .. 12	Orange Prince .. 26
Ben Alder .. 6	Empire .. 20	Ladybird .. 16	Ormolu .. 8
Bernardino .. 15	Empress .. 13	Lady Godiva .. 18	Ornatus .. 27
Blackwell .. 15	Epic .. 26	Lady M. Boscawen .. 16	Ornament .. 18
Blazing Star .. 15	Ethelburga .. 27	Lamond .. 7	Pandora .. 19
Blood Orange .. 17	Evangeline .. 20	Latona .. 7	Paper White .. 25
Bonaparte .. 15	Fair Maiden .. 18	Leah .. 7	Pearl of Dew .. 8
Bonfire .. 6	Fairy Queen .. 20	Lemon Frill .. 21	Pedestal .. 16
Bouquet Enorme .. 25	Feronia .. 20	Lent Lily .. 13	Peter Barr .. 12
Branston. <i>See</i> Lady Godiva.	Firebrand .. 18	Lobularis .. 13	Pharaoh .. 14
Bridesmaid .. 20	Fireglow .. 15	Loch Fyne .. 7	Pheasant's Eye .. 27
Bulbocodium .. 29	Firelight .. 15	Lord Kitchener .. 21	Philippe de Vilmorin .. 12
Butter and Eggs .. 28	Fleetwing .. 15	Lord Roberts .. 10	Phineus .. 8
Buttercup .. 24	Frank Miles .. 15	Loveliness .. 12	Pilgrim .. 16
C. H. Curtis .. 9	Furnace .. 18	Lucia .. 21	Pixie .. 8
Cadret .. 13	Gardenia-flowered .. 29	Lucifer .. 16	Polyanthus Narcissus .. 25
Caedmon .. 26	Gay Hussar .. 18	Lucrèce .. 25	Primrose Gem .. 8
Cæsar .. 26	George Philip Haydon .. 10	Lulworth .. 16	Primrose Phoenix .. 28
Calathinus (<i>Triandrus</i>) .. 23	Gladiator .. 7	Mdme. de Graaff .. 12	Prince Arthur .. 8
Campanelle Jonquil .. 28	Glandore .. 26	Mdme. Plemp .. 13	Prince Fushimi .. 8
Canaliculatus .. 26	Glitter .. 18	Madonna .. 23	Prince Rupert .. 8
Casimir .. 6	Gloria Mundi .. 15	Maid of Athens .. 21	Pyrrha .. 19
Cassandra .. 26	Gloriosus .. 25	Major Spurrell .. 18	Queen Maya .. 8
Catriona .. 11	Glory of Leiden .. 10	Malcolm .. 16	Queen of Spain .. 23
C. J. Backhouse .. 15	Glory of Lisse .. 27	Marcella .. 18	Queen of the North .. 21
Cernuus plenus .. 28	Glory of Noordwijk .. 13	Marie Louise .. 18	Radiant .. 19
Challenger .. 17	Golden Apricot .. 15	Mascotte .. 18	Raeburn .. 8
Chamois .. 20	Golden Arrow .. 7	Masterpiece .. 7	Red Beacon .. 19
Charm .. 17	Golden Bell .. 10	Maximus .. 10	Red Chief .. 19
Cingalee .. 23	Golden Empress .. 7	Mermaid .. 21	Red Emperor .. 19
Citrinus .. 29	Golden Frill .. 7	Mesha .. 13	Rembrandt .. 26
Citriona .. 15	Golden Rose .. 28	Messina .. 18	Rev. D. R. Williamson .. 11
Cleopatra .. 9	Golden Sovereign .. 7	Michael Angelo .. 16	Ringdove .. 8
Cloth of Gold .. 26	Golden Spur .. 10	Milk and Honey .. 7	Rosalind .. 19
Clusii .. 29	Gracilis .. 29	Minerva .. 27	Rosella .. 19
Codlins and Cream .. 28	Grand Monarque .. 25	Minimus .. 11	Royal Gold .. 8
Cœur de Lion .. 17	Grand Soleil d'or .. 25	Minor .. 10	Royal Lady .. 21
Comus .. 26	Grandis .. 13	Miss Willmott .. 18	Royal Star .. 19
Conspicuous (<i>Bulbo</i>) .. 29	Great Warley .. 15	M. J. Berkeley .. 10	Ruby .. 19
Constellation .. 15	Gwendolin .. 13	Monarch .. 11	St. George .. 19
Coral Queen .. 17	Harpagon .. 7	Monophyllus .. 29	St. Olaf .. 22
Corallina .. 20	Helice .. 12	Mopsa .. 18	St. Wendrona .. 14
Cornelia .. 10	Helios .. 25	Morning Glory .. 7	Salarino .. 21
Cossack .. 17	Henry Irving .. 10	Moschatus of Haworth .. 12	Salmonetta .. 21
			Santa Maria .. 11
			Scilly Isles White .. 25
			Seagull .. 19
			Seawald .. 8
			Sequin .. 19
			Seraphine .. 14
			Serotinus .. 29
			Seville .. 16
			Sheba .. 19
			Silver Gift .. 8
			Sirdar .. 21
			Sir Galahad .. 22
			Sir Gawain .. 8
			Sir Watkin .. 16
			Snow King .. 27
			Socrates .. 27
			Southern Gem .. 22
			Spring Glory .. 14
			Steacfast .. 16
			Sulphur Phoenix .. 28
			Sunny Lass .. 19
			Sunrise .. 19
			Sunset .. 26
			Sweet Dorothy .. 22
			Sweet Nancy .. 24
			Sycamore .. 26
			Talma .. 11
			Tamora .. 12
			Tazetta vars. .. 25
			Telamonius plenus .. 28
			Tenuior .. 29
			The Dove .. 22
			The Geisha .. 19
			The Grey Mare .. 12
			Timon .. 27
			Torchlight .. 19
			Tresserve .. 11
			Triandrus .. 23
			Tridymus .. 26
			Triumph .. 26
			Una .. 22
			Undine .. 22
			Van Waveren's Giant .. 11
			Van Zion Double. <i>See</i> Telamonius plenus.
			Venus .. 22
			Victoria .. 14
			Viola .. 19
			Viscountess Falmouth .. 22
			Vivid .. 19
			Volcano .. 28
			Walwyn .. 14
			Waterwitch .. 22
			Weardale Perfection .. 14
			Wendy .. 8
			White Knight .. 12
			White Lady .. 22
			White Pearl .. 25
			White Queen .. 22
			White Slave .. 22
			White Standard .. 27
			White Star .. 8
			Whitewell .. 16
			Wildfire .. 19
			Will Scarlett .. 16
			William Goldring .. 14
			W. P. Milner .. 12
			Yellow Giant .. 16
			Yellow Standard .. 16
			Zingara .. 19

Barr's Daffodil Catalogue, 1921.

PRACTICAL HINTS ON BULB CULTURE.

Culture for Spring-flowering Bulbs out of Doors.

Proper Condition of Soil.—Plant bulbs only when the ground is in a nice friable state, and never when the soil is wet and sticky ; in such cases plant later when the soil is in a good friable condition. After digging or trenching, the ground should be allowed to settle at least ten days before planting.

Depth to Plant.—Failures with bulbs are most frequently due to their having been planted too deeply or too shallow. A good general rule to follow is to cover the bulb with soil once and a half to twice its own depth, *measuring the bulb* from base to shoulder. Thus a daffodil bulb measuring 2 inches from base to shoulder should be covered with 3 to 4 inches of soil. The principal exceptions to this rule are Crocuses, which prefer shallow planting, and Erythroniums, Snowdrops and Tulips, which require deeper planting. We give special directions for these bulbs in body of our General Bulb Catalogue.

Manure for Bulbs.—The ammonia in fresh stable manure is fatal to bulbs and is often the cause of failure in growing Tulips, Daffodils, etc., therefore only well-decayed stable or cow manure, or the material from an exhausted hot-bed, should be used. The best general manure for all bulbs growing outdoors is our PHYTOBROMA (which contains in suitable proportions Sulphate of Potash, Steamed Bone Flour, etc.); this should be forked into the ground at planting time at the rate of 3 oz. to the square yard, and a surface dressing of 3 oz. to the square yard applied early in spring (well hoed in) when top growth is showing. For heavy soils BASIC SLAG is good ; this should be put in the ground with the bulbs at time of planting at the rate of 7½ oz. to the square yard. For light and sandy soils CRUSHED BONES can be recommended, put into the ground at time of planting at the rate of 2 oz. to the square yard, and after planting sprinkle on the surface of the ground SULPHATE OF POTASH at the rate of ¾ oz. per square yard. On hot, dry and sandy soils, old stable manure may with advantage be used, as it gives humus and helps to retain moisture in the soil ; it should be dug in 15 to 18 inches deep, so as not to come in contact with the bulbs. In the case of bulbs which have not been lifted we recommend a top dressing (well hoed in) of PHYTOBROMA or Steamed Bone Flour in November and again in January or early February, at the rate of 3 oz. to the square yard. *Price List of Manures will be found on page 36.*

Top Dressing.—Where possible, we advise a top dressing to all bulbs through the winter months of some light material such as long straw litter, cut heather, cut furze branches, or PEAT-FIBRE. *The advantage* of this light covering is that it keeps the surface soil sweet by preventing the heavy winter rains from beating down the earth's crust ; it also protects any early top growth.

Lifting and Replanting.—When bulbs are lifted they should not, if possible, be replanted on the same ground, but where other bulbs or plants have previously been growing : thus, where Tulips have been growing last season, plant Daffodils this autumn, and so on.

Time to Plant.—Daffodils may be planted from middle of August to December, the later plantings generally blooming a week or fortnight later than the early plantings. The time of planting for other bulbs we give under the heading of each family in our General Bulb Catalogue.

Culture for Spring-flowering Bulbs in Pots or Boxes.

Time of Potting.—September and October are best months for potting most spring-flowering bulbs.

The best compost to use is a mixture of two-thirds good fibrous loam (which should be pulled to pieces by the hand, *and not passed through a sieve*) and one-third old decayed leaf soil, with a sprinkling of sharp silver sand, adding 1½ lbs. of bone meal or 1 lb. of Phytobroma to every bushel of soil, which mix well together before using. In all cases the soil used should be fresh and sweet ; *never pot in soil that is wet or sticky.* Our Peat-Fibre, Shell and Charcoal Mixture (*see page 36*) may also be used ; it is light and cleanly to handle, and is a suitable medium for growing all kinds of spring-flowering bulbs in pots or vases, either for indoor decoration or for cutting.

Sterilising Soil.—In order to destroy all injurious insect life it is a good plan to sterilise potting soil before adding the Phytobroma or bonemeal. We recommend for this purpose the KONDINE SOIL STERILISER, or small quantities of soil can be easily sterilised in a sack by pouring over it a large kettle of boiling water and then spreading out the soil to dry. This will prevent a great deal of after trouble from worms or insects attacking the bulb roots.

The pots should be carefully washed and allowed to dry before using ; new pots should be well soaked. *Never plant in dirty or wet pots.*

Good drainage should be secured by placing three or more pieces of charcoal (in preference to broken crocks) over the drainage hole, covering the charcoal or crocks with a little rough fibre from the loam. When boxes are used, the slit at bottom of box should be covered with pieces of charcoal, and a good layer of rough fibrous loam or leaf soil placed at bottom of box to ensure perfect drainage.

Covering the Bulbs.—The larger bulbs need not be quite covered with soil, the level of which should be half an inch below the rim of the pot, to allow of watering when the bulbs are in growth.

After potting, stand the pots or boxes outside in the open, on a firm bottom such as a bed of gravel or a gravel path to prevent the entrance of worms. They should then be surrounded and completely covered with Peat Fibre, Cocoa Fibre, or old decayed leaf soil (ashes from gas works are dangerous

CULTURE OF BULBS IN POTS OR BOXES—continued.

as being often very poisonous to plant life), the top of the pots being 2 inches below the surface of the covering material. This will secure a natural and moist condition to the bulbs and encourage root action. So long as the pots or boxes remain buried in this way they will require no watering.

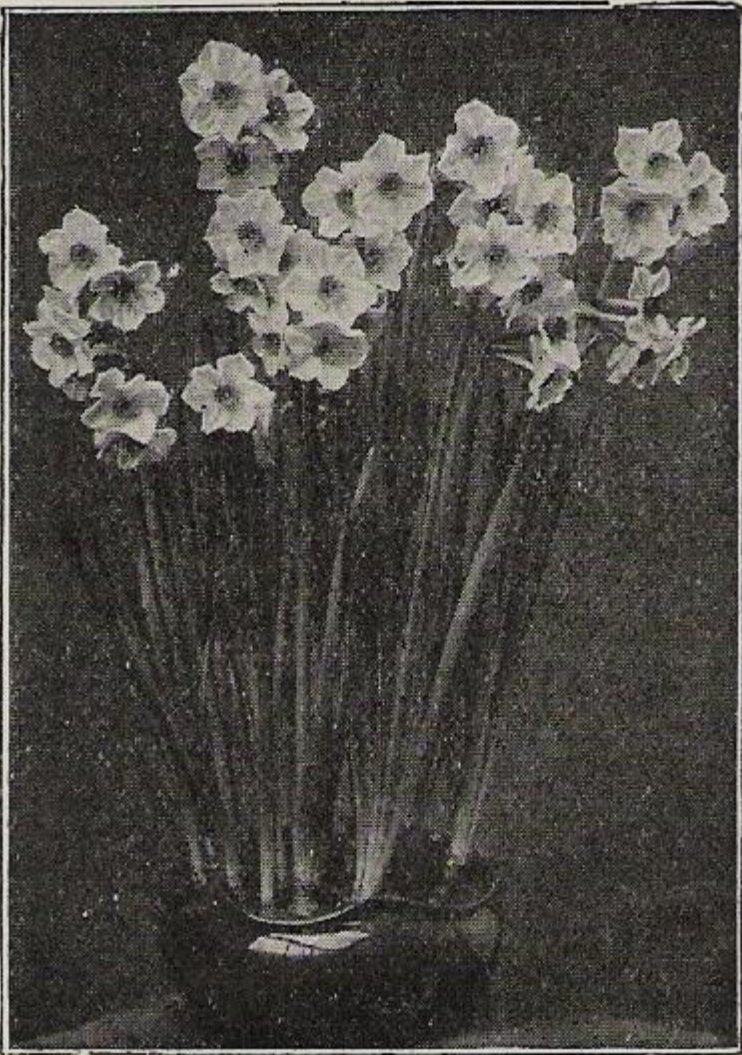
The pots or boxes should remain plunged for about twelve weeks (Roman and Italian Hyacinths rather less), in order that the bulbs may get well rooted, after which portions may be removed indoors in succession, selecting first those which bloom naturally early. Place first in a cold frame, cool greenhouse or cold sitting-room free from draughts and keep partially shaded for a few days, giving water gradually. Very weak liquid manure-water may then be given once a week until they come into flower. Those that are wanted in bloom early may, after the flower buds are advanced, be placed in a warmer temperature, such as a slow forcing-house, but this should never exceed 65° if fine blooms are desired. The plants should always be kept as near to the glass as possible and not allowed to get drawn, from an insufficient supply of light or air. *On no account should bottom heat be given.* A frequent mistake made in forcing bulbs is that they are removed from the plunging-bed too early, before they have made a sufficient quantity of fibrous roots; they are then at once subjected to heat, and failure is the result. It is a good plan, when bulbs are removed from the plunging-bed, to place an inverted flower-pot over them for a day or two to prevent any check from draughts to the young top growths.

Pot-Culture of Early Gladioli, Ixias, Morpoxias, Sparaxis, Tritonias, etc.

These bulbs start early into growth and therefore should not be potted up before the end of October to November. The pots should be plunged up to the rim only (not covered) in a cold frame, and protected with mats during severe frosty weather. There they should remain for about three months, after which the treatment is similar to that for spring-flowering bulbs.

**Culture of Spring-flowering Bulbs in Vases and Bowls
in Barr's New Peat-Fibre, Shell and Charcoal Mixture.**

A charming effect can be obtained by growing spring-flowering bulbs in fancy vases and bowls, with or without drainage, by using our **Peat-Fibre Mixture** (5s. 6d. per bushel, 1s. 6d. per peck); the mixture is light, clean, and nice to handle, and *remains sweet* (an important matter where the vases used have no drainage holes); indeed, it is in every way preferable to soil for growing bulbs in bowls and vases.



NARCISSUS POETAZ ELVIRA
growing in Barr's Peat-Fibre Mixture.

Culture.—Fill the vase or bowl with the **Peat-Fibre Mixture** up to within a little below the rim, and plant the bulbs in the same manner as with ordinary potting soil; the mixture should be shaken down into place after planting and lightly watered, but should not be pressed down tightly, or the bulbs will be forced upwards when root growth commences.

After planting, adopt either of the following plans:—

(a) The bowls may be placed outdoors and covered entirely with Peat-Fibre or Cocoa fibre, leaving them thus for 8 to 12 weeks (Early Roman and Italian Hyacinths rather less), when the bulbs will have made good fibrous roots.

(b) Or the bulbs may be plunged in a cold frame, airy cellar, or out-house instead of outdoors; with this treatment, however, it will be necessary to occasionally give water.

(c) A third plan is to place the bowls after potting in a dark or moderately dark *airy* room, cool but not too cold; they must not be placed in a close cupboard or the bulbs will certainly suffer.

In the case of bowls plunged outdoors there will be no need to give any attention in the way of watering, as they will of course have abundance of moisture from the autumn rains. Where, however, the bulbs are not exposed to rain, the bowls should be examined once or twice a week, care being taken that the fibre mixture is kept uniformly damp; but for the first week or two after planting water should be given very sparingly, sufficient only to encourage root action. As soon as the bulbs are well rooted, water may be given more freely, the fibre mixture being then kept quite moist; **if the mixture**

is allowed at any time to become dry, even for a day or two, the flower buds will probably become blind; should by any chance too much water have been given, the bowls may be drained by carefully tipping them on their side. If obtainable, rain water is the best to use.

When the bulbs have made some top growth remove the bowls to the sunny window of a sitting-room, where they will get the morning sun, or put in a cool greenhouse close to the glass, as they must have sufficient light and air to prevent the foliage from becoming drawn. For a few days the bowls should be covered with tissue paper until the young growth has become accustomed to the light. Draughts and gas heat must be carefully avoided. No bottom heat should be given, and a temperature of 55° to 60° by day and 50° to 55° by night is sufficient to obtain good blooms; the bulbs resent too warm a temperature.

When growth is fairly advanced water occasionally with weak liquid manure, a tablespoonful of our Phytobroma to a gallon of water kept well stirred.

For Collections of Bulbs for Bowl Culture, see page 4 of this Catalogue and page 3 of our General Bulb Catalogue.

Naturalising Bulbs and Plants in Grass, Woodlands, etc.



CROCUSES NATURALISED IN GRASS IN A LONDON PARK.

This fascinating phase of gardening deserves more attention than has hitherto been bestowed upon it. No sight is more delightful than the fresh brightness of spring flowers growing freely in grass land or lending colour to woodland walks, hedgerows, and ditches, here and there nestling at the foot of trees, or establishing themselves on sloping banks.

For naturalising in grass spring flowers are especially suitable, as they bloom and are over before the grass grows tall enough to hide their beauty. Amongst our spring-flowering bulbs there are many gems which refuse to grow in cultivated borders, but when planted in grass, where they enjoy a cooler and more even temperature, they soon become established, and multiply freely until a regular colony is formed which greatly adds to the charm of the landscape.

All formality of arrangement should be avoided, the bulbs being scattered freely from the hand and planted where they fall. Large irregular breaks of one kind of bulb should be made in order to obtain the finest effect. In planting under trees, select spots where the soil is deepest and where the drip is least.

Those whose gardens are of limited size might make them very beautiful in spring, by utilising the fringes of their lawns and any grassy mounds or shady shrubbery walks for such spring favourites as Daffodils, Anemones, Scillas, Crocuses, Chionodoxas, etc., reserving the borders for Tulips and Lilies, etc., also summer and autumn-flowering herbaceous plants. In large gardens and parks ample opportunities are afforded for naturalising spring-flowering bulbs, and very beautiful results may be attained in this way.

In planting bulbs *in grass*, **Barr's Bulb Planter** (see page 36) should always be used. It cuts out a clean piece of turf, leaving a hole to receive the bulb, and on making the second cutting clears itself of the first piece of turf, which lies ready at hand for covering the bulb. This handy implement saves an immense amount of time, and does not, as with an ordinary dibber, leave a hard resting-place for the bulb, while by its use *the grass is not in the least disturbed*. Planting should not take place while the ground is hard, but after the first autumn rains. If the ground is poor, a compost of fresh soil with an abundance of *Crushed Bones* (7 lbs. to a bushel) or *Phytobroma* (3 lbs. to bushel) should be made and a little of the compost dropped into each hole before placing in the bulb, a little more should be given as a covering, and then the sod of turf be replaced and pressed down. The bulbs will then be given a fair start in their new quarters. It is advisable to cut the grass as late in autumn as possible, so as to ensure it being short at the time the bulbs flower. In meadowland spring-flowering bulbs in no way affect the hay crop, which may be cut at the usual season.

Among the many gems which lend themselves to wild gardening and naturalising, we would specially mention the following:—**Alliums, Anemones, Anthericums, Chionodoxas, Crocuses, Cyclamen, Daffodils, Dog's Tooth Violets** (*Erythronium dens-canis*), **Fritillaries, Funkias, Helleborus, Hemerocallis, Irises** (Tall and Dwarf Flag), **Muscari, Ornithogalums, Scillas** (early-flowering), **Snowdrops** (*Galanthus*), **May-flowering Cottage Tulips**, and **Wood Hyacinths** (Late-flowering Scillas).

COLLECTIONS OF DAFFODILS

FOR FLOWER BORDERS, POTS, AND BOWL CULTURE.

Barr's 27/6 Collection of Daffodils for Flower Borders.

The following varieties are all beautiful in the flower border, and the selection embracing early and late varieties gives a good succession of bloom. All are suitable for pot culture and will give an equally fine display in the greenhouse or sitting-room.

ALL STRONGEST SELECTED BULBS.

6 Emperor	6 Incomp. Lucifer	6 Queen of Spain
6 Golden Spur	6 „ Sir Watkin	6 Odorus Campanelle
6 Bicolor Horsfieldii	6 Barrii conspicuus	6 Poetaz Elvira
6 „ Victoria	6 „ Fair Maiden	6 Poeticus ornatus
6 Incomp. Frank Miles	6 Leedsii Amazon	6 „ Minerva
6 „ Ladybird	6 „ Mrs. Langtry	6 Codlins and Cream (double)

3 Bulbs each of the above 18 varieties for 14/-

Barr's 42/- Collection of Daffodils for Pot Culture.

The following Daffodils can be specially recommended for pot culture, and by gentle forcing a succession of bloom may be had through February and March, the selection containing early and later flowering varieties. If after flowering they are turned out of pots and carefully planted out (the ground being well watered previously, should it be dry) they will mostly flower well outdoors the following season. *For Cultural Directions see pages 1 and 2.*

ALL STRONGEST SELECTED BULBS.

6 Emperor	6 Incomp. Sir Watkin	6 Queen of Spain
6 Henry Irving	6 „ Yellow Standard	6 Poetaz Elvira
6 Madame de Graaff	6 Barrii Albatross	6 Poeticus Edna
6 Bicolor Empress	6 „ Fair Maiden	6 „ Cassandra
6 „ Gwendolin	6 Leedsii Queen of the North	6 Codlins and Cream (double)
6 „ Spring Glory	6 „ Amazon	6 Campanelle Jonquil
6 Incomp. Lucifer	6 „ White Lady	

3 Bulbs each of the above 20 varieties for 22/-
3 Bulbs each of 10 varieties (our selection), 12/6


Barr's 25/- Collection of Daffodils for Bowl Culture.

Suitable for growing in bowls in our Peat-fibre Mixture. *For Cultural Directions see page 2.*

ALL STRONGEST SELECTED BULBS.

6 Emperor	6 Incomp. Lucifer	6 Leedsii Bridesmaid
6 Golden Spur	6 „ Sir Watkin	6 Odorus Campanelle
6 Queen of Spain	6 „ Yellow Standard	6 Poetaz Aspasia
6 Madame de Graaff	6 Barrii Seagull	6 „ Elvira
6 Bicolor Empress	6 Leedsii Amazon	6 Poeticus ornatus


3 Bulbs each of the above 15 varieties for 12/6

 *Special Collections for Bowl Culture, Pots, or Borders, made up to any value to meet customers' requirements.*

DAFFODILS RECOMMENDED FOR EARLY FORCING.

The following varieties being naturally early sorts may be easily had in bloom during January and February. *For Cultural Directions see pages 1 and 2.*

	PAGE		PAGE		PAGE
Golden Spur (Yellow Trumpet)...	10	Duke of Bedford (Bicolor Trumpet)	13	Yellow Standard (Incomparabilis)	16
Henry Irving „ „ ...	10	Gwendolin „ „ ...	13	Firebrand (Barrii) ...	18
Hoboken „ „ ...	10	Horsfieldii „ „ ...	13	Odorus Campanelle ...	24
King Alfred „ „ ...	10	Spring Glory „ „ ...	14	Aspasia (Poetaz) ...	25
Olympia „ „ ...	11	Victoria „ „ ...	14	Elvira „ „ ...	25
Alice Knights (White Trumpet)...	11	Blackwell (Incomparabilis) ...	15	Triumph „ „ ...	26
Lady Audrey „ „ ...	12	Sir Watkin „ „ ...	16	Ornatus (Poeticus) ...	27
Madame de Graaff „ „ ...	12	Yellow Giant „ „ ...	16	Telamonius plenus (Double) ...	28

 In addition to the above we recommend all the Polyanthus Narcissi offered on page 25.

Barr's Flower Border Mixture of Daffodils.

Although we are of opinion that a better effect is obtained by planting named varieties in separate groups, there are many who prefer a general mixture, especially for filling large beds, and the special mixture we offer here will be found admirably suited to this purpose.

Barr's Flower Border Mixture of Trumpets, Chalice Cup and Poet's Narcissi,
strong flowering bulbs, per 100, 21/-; per doz., 3/-.

DAFFODILS FOR NATURALISING

In Woodlands, Shrubberies, Orchards, and in Grass, etc., and to plant for Cutting.

1000 in 20 fine showy named sorts (Trumpets, Peerless, and Poets), strong bulbs, 150/-
 500 in 20 " " " " " " " " 75/-
 100 in 10 " " " " " " " " 15/-

TRUMPET DAFFODILS. (For descriptions see pages 9 to 14.)

	per 100			per 100	
	s.	d.		s.	d.
Emperor (Yellow)	25	0	Horsfieldii (Bicolor).....	25	0
Empress (Bicolor)	25	0	J. B. M. Camm (Bicolor).....	25	0
Golden Spur (Yellow)	25	0	Maximus (Yellow)	21	0
Grandis (Bicolor)	21	0	Victoria (Bicolor).....	21	0
Henry Irving (Yellow)	25	0	William Goldring (Bicolor).....	21	0
Hoboken (Yellow)	21	0			

CHALICE-CUP DAFFODILS, or Star Narcissi. (See pages 14 to 22.)

	per 100			per 100	
	s.	d.		s.	d.
INCOMPARABILIS Autocrat.....	21	0	BARRII Conspicuus—		
„ Beauty	21	0	per 1000, 130/-	14	6
„ Cynosure	17	6	„ Firebrand	27	6
„ Frank Miles.....	25	0	„ Seagull	25	0
„ Sir Watkin	21	0	LEEDSII Amabilis	17	6
BARRII Albatross	21	0	„ Mrs. Langtry...per 1000, 150/-	16	6

QUEEN OF SPAIN, one of the best for Grass (see page 23)per 100, 21/- ; per 1000, 190/-

ODORUS Campanelle (Sweet-scented French Campanelle Jonquil) per 100, 15/- ; per 1000, 140/-

„ Rugulosus

BUNCH-FLOWERED DAFFODILS, (See page 25.)

POETAZ Aspasiaper 100, 25/- | POETAZ Elvira.....per 100, 25/-

TRUE POET'S NARCISSI. (See pages 26 and 27.)

POETICUS Old Pheasant's Eye.....per 100, 7/- ; per 1000, 65/-

„ Ornatus..... „ 9/6 ; „ 90/-

DOUBLE DAFFODILS. (See pages 27 to 29.)

Telamonius Plenus (Double Yellow Trumpet Daffodil)per 100, 21/-

Golden Rose (Double rose-flowered yellow) „ 25/-

Eggs and Bacon (Double rose-flowered white and orange) „ 25/-

Codlins and Cream (Double rose-flowered sulphur-white) „ 25/-

Poeticus Double Whiteper 100, 9/6 ; per 1000, 90/-

MIXTURES OF DAFFODILS FOR NATURALISING.

Mixed Daffodils of Many Sorts, for naturalisation, including Trumpet, Chalice-cup, and Poet's Narcissi, suitable for large plantings in Grass, Woodlands, etc...per 1000, 85/- ; per 100, 9/-

Single Chalice-cup or Star Narcissi, Mixed (Incomparabilis, Leedsii and Barrii varieties), the charming effect of these light graceful Daffodils, when naturalised, must be seen to be realised. For cutting they are most valuableper 1000, 85/- ; per 100, 9/6

White Poet's Narcissi, in Mixture, comprising mostly varieties of Poeticus, suitable for naturalisation in grass, under trees, etc. Valuable for cutting.....per 1000, 90/- ; per 100, 9/6

MINIATURE DAFFODILS FOR THE "ROCK GARDEN."

The following are charming little subjects for rockwork, where their dainty flowers are seen to perfection. They should be left undisturbed for years, and, if happy, will soon establish themselves and afford a lovely picture in early spring. The ground may be carpeted with close-growing surface-rooting plants, such as *Acæna*, *Mossy Saxifragas*, and *Thymes*, etc.; these plants provide a natural protection for these little bulbs, besides keeping their dainty blooms from being splashed in rainy weather.

☞ Full descriptions of the following Miniature Daffodils will be found in body of Catalogue.

	per doz. each.					per doz. each.			
	s.	d.	s.	d.		s.	d.	s.	d.
Hoop Petticoat Daffodils (<i>Bulbocodium</i> , page 29)—					Minor (page 10), extra strong bulbs	25	0	2	3
Large Sulphur...per 100, 9/-	1	4	—	—	Nanus (page 11)...per 100, 55/-	7	6	0	8
„ „ larger bulbs „ 12/6	1	9	0	2	Moschatus (page 12) „ 30/-	4	0	0	5
White	5	6	0	6	Triandrus (page 23)—				
Early Yellow	2	6	0	3	albus.....per 100, 12/6	1	9	0	2
Large Yellow (<i>conspicuus</i>)	10	6	1	0	„ larger bulbs „ 21/-	3	0	0	4
Canaliculatus (page 26)					calathinus	12	6	1	3
per 100, 25/-	3	6	0	4	Juncifolius (page 29).....	7	6	0	8

Barr's New Seedling Daffodils

Including New Varieties for 1921

The following list comprises some of the finest **New Seedling Daffodils** raised by ourselves and other well-known hybridists. We would specially draw attention to the following grand exhibition kinds: **Alpine Snow**, **Aylmer**, **Ben Alder**, **Cyane**, **Danesfield**, **Gladiator**, **Golden Empress**, **Golden Sovereign**, **Harpagon**, **Kingdom**, **Latona**, **Loch Fyne**, **Masterpiece**, **Milk and Honey**, **Morning Glory**, **Mrs. D. V. West**, **Nannie Nunn**, **Nightingale**, **Orange Glory**, **Ormolu**, **Pearl of Dew**, **Phineus**, **Pixie**, **Primrose Gem**, **Ptolemy**, **Prince Arthur**, **Prince Fushimi**, **Prince Rupert**, **Raeburn**, **Ringdove**, **Royal Gold**, **Wendy**, **White Pearl**, and **White Star**—all of great beauty.

We have been awarded for **New Seedling Daffodils**—

The Engleheart Challenge Cup by the Royal Horticultural Society as First Prize for Twelve Best Seedling Daffodils not in commerce.

The Walter Ware Challenge Cup for the Best New Triandrus Hybrids.

The R.H.S. Silver Standard Cup for the Best 12 New Seedling Daffodils

The relative qualities as we judge them are indicated by xx, xxx, xxxx, the highest quality flower being given the most marks. The figures after the names indicate the relative period of flowering, (1) being earliest, (6) being latest.

	each.
	£ s. d.
Abadea (Leedsii) (3), xxxx, <i>new</i> 1920, a large refined flower measuring 4 inches across, with a beautiful smooth, white, flat perianth and elegant creamy white crown, ht. 22 in.	0 15 0
Adelgar (Trumpet Daffodil) (3), xxx, a good bold flower with soft yellow perianth and golden-yellow trumpet, well frilled at mouth, ht. 18 in.....	0 10 6
Alope (Triandrus Hybrid) (4), xxx, <i>new</i> 1919, flower large with primrose-yellow perianth and bold canary-coloured trumpet, ht. 13 in.	0 7 6
Alpine Snow (Leedsii) (4), xxxx, an exquisitely refined flower of the purest white, with round imbricated perianth and a daintily crimped globular cup, ht. 12 in.....	0 10 6
Aylmer (Trumpet Daffodil) (3), xxxx, distinct and elegant, perianth bright yellow smooth and campanulate, trumpet rich yellow, with rolled back brim, ht. 19 in.....	0 15 0
Ben Alder (Trumpet Daffodil) (2), xxxx, <i>new</i> 1920, a very handsome flower of King Alfred type, but larger. It is also more easily grown, and produces strong robust plants, ht. 20 in.	1 10 0
Bonfire (Barrii) (3), xxxx, a grand showy flower, perianth yellow, flat and smooth, crown short, of a rich deep crimson, ht. 13 in.....	0 12 6
Casimir (Giant Incomparabilis) (3), xxx, after the style of <i>Bernardino</i> , perianth white and pointed, cup bright yellow, prettily fluted and with slight orange flush, a nice showy flower, ht. 20 in.....	0 15 0
Creusa (Trumpet Daffodil) (3), xxx, <i>new</i> 1921, an elegant flower of the <i>J. B. M. Camm</i> type, perianth white, trumpet sulphur-primrose with evenly frilled margin, ht. 16 in.....	0 15 0
Cyane (Trumpet Daffodil) (4), xxxx, <i>new</i> 1921, flower of beautiful form and good substance, perianth white, smooth, and imbricated, trumpet soft primrose-yellow, ht. 16 in....	3 3 0
Danesfield (Trumpet Daffodil) (4), xxxx, <i>new</i> 1919, an immense flower with broad white imbricated perianth and a bold canary-coloured trumpet, expanded and frilled at mouth; one of the largest of Bicolor Trumpet Daffodils and a very robust grower, ht. 17 in.	2 2 0
Discus (Barrii) (3), xxxx, a beautiful and symmetrical flower of great substance, perianth ivory-white, broad and imbricated, crown quite flat, lemon-yellow, shaded apricot at margin and with a deep green base, tall.....	0 7 6
Eldred (Trumpet Daffodil) (3), xxx, <i>new</i> 1920, large bold flower, perianth white, broad and campanulate, fine bold trumpet, delicate primrose, broadly frilled at mouth, ht. 17 in.....	0 5 6

Barr's New Seedling Daffodils—continued.

	each.		
	£	s.	d.
Gladiator (Giant Incomparabilis) (3), xxx, new 1920, a grand flower, measuring 3 $\frac{3}{4}$ inches across with creamy perianth and an immense open spreading crown, fiery red shading down to gold and beautifully fringed and flanged at margin, ht. 20 in.....	10	10	0
Golden Arrow (Cyclamineus Hybrid) (3), xxx, a graceful pendent flower with reflexing primrose perianth and a long elegant full yellow trumpet, strong grower, ht. 15 in.....	0	15	0
Golden Empress (Trumpet Daffodil) (4), xxx, new 1921, a grand flower measuring 4 inches across, of beautiful form, perianth rich yellow, broad and imbricated, trumpet rich golden-yellow, well open at mouth and evenly frilled, ht. 24 in.....	5	5	0
Golden Frill (Trumpet Daffodil) (1), new 1920, a wonderful sport from Golden Spur , flowers rich yellow, with trumpet deeply crested and frilled at mouth, very decorative.....	0	15	0
Golden Sovereign (Trumpet Daffodil) (3), xxx, new 1921, flower of medium size but remarkable for its very rich deep golden colour, a fine erect grower, ht. 20 in.	0	15	0
Harpagon (Barrii) (3), xxx, a lovely flower, perianth pale primrose, smooth, broad and imbricated, crown expanded, with brilliant orange-red margin, ht. 14 in. FIRST PRIZE FOR SINGLE BLOOM R.H.S., 1913.....	1	10	0
Horizon (Barrii) xxx, perianth white and imbricated, crown flat and fluted, brilliant orange-red with green centre, very attractive, ht. 14 in.....	0	6	6
Ivory (Leedsii) (3), xxx, a perfectly formed flower and very refined, perianth broad and imbricated, glistening white, crown large and flat, of a beautiful ivory-white, ht. 16 in....	0	7	6
Kestrel (Poeticus) (3), xxx, a tall and stately variety of fine form and substance, perianth white, round and imbricated, eye flat and broad of an intense crimson-scarlet.....	0	5	6
Kingdom (Giant Leedsii) (4), xxx, a grand flower of Lord Kitchener type, but taller, perianth flat, imbricated and of great substance, crown creamy white, expanded and slightly recurved at brim, ht. 19 in.....	2	2	0
Lamond (Trumpet Daffodil) (3), xxx, new 1919, flower a pretty soft colour, perianth cream shaded sulphur, trumpet primrose shaded sulphur, of very elegant form, prettily frilled and flanged mouth, ht. 19 in.....	0	5	6
Latona (Trumpet Daffodil) (4), xxx, a remarkably beautiful flower, measuring 4 $\frac{1}{8}$ inches across, of a self buttery yellow, trumpet long with rolled back brim, very distinct, ht. 20 in.	3	3	0
Leah (Trumpet Daffodil) (3), xxx, new 1920, a very elegant flower with smooth, flat, white perianth, trumpet opening cream and passing to pure white, ht. 16 in.....	0	5	6
Loch Fyne (Giant Leedsii) (3), xxx, a grand flower, measuring 4 $\frac{3}{4}$ inches across with ivory-white perianth, pointed and imbricated, and a large spreading pale lemon crown, prettily fluted, ht. 22 in.....	0	15	0
Masterpiece (Barrii) (4), xxx, a model flower of exquisite symmetry, with very broad rounded cream-white perianth and a remarkably striking brilliant red flattened crown, very beautiful. AWARD OF MERIT R.H.S.....	0	3	6
Milk and Honey (Double Incomparabilis) (3), xxx, new 1919, producing large double rose-like flowers of elegant form, white with lemon-yellow centre, lasting long in condition, very pretty; erect blue-green foliage, ht. 18 in. AWARD OF MERIT, BIRMINGHAM, 1919...	1	1	0
Morning Glory (Incomparabilis) (3), xxx, a perfect exhibition flower of King Alfred colouring, deep golden yellow, large and of great substance, perianth flat and erect, crown expanded at mouth and slightly fringed, ht. 17 in.....	1	1	0
Mrs. D. V. West (Trumpet Daffodil) (4), xxx, new 1915, a beautiful Daffodil raised by Mr. D. V. West, of Victoria, Australia; the flower is of elegant form, slightly drooping, and chaste in colour, measuring 4 inches across, with broad white well-imbricated perianth and a long trumpet opening delicate primrose developing to a creamy white with channelled mouth and slightly frilled edge, ht. 18 in.....	2	2	0
Nannie Nunn (Barrii) (4), xxx, new 1919, a remarkably striking flower with rounded campanulate yellow perianth and broad cup of the most intense vermilion-scarlet, tinged brick-red, ht. 14 in.....	0	15	0
Nightingale (Poeticus) (3), xxx, new 1920, a very beautiful exhibition variety of perfect form with very thick rounded perianth of a glistening white, well imbricated, eye brilliant scarlet, ht. 16 in. AWARD OF MERIT R.H.S.....	1	1	0
Noblesse (Trumpet Daffodil) (4), xxx, flower large, of great beauty, with pure white perianth, and long pale primrose trumpet shading to white, expanded deeply at brim.....	1	1	0

Barr's New Seedling Daffodils—*continued.*

	each.
	£ s. d.
Orange Glory (Cyclamineus Hybrid) (4), xxxx, <i>new</i> 1920, a very striking variety, bred from a yellow trumpet Cyclamineus hybrid; it has a yellow reflexing perianth and a trumpet of the deepest intense orange we have yet found in any Daffodil. The plant is of strong constitution and should make a valuable parent for breeding from. AWARD OF MERIT AS A SHOW FLOWER, R.H.S., April 13th, 1920.....	2 2 0
Ormolu (Barrii) (3), xxxx, a beautiful flower, with pale lemon perianth passing to white, and a flattish brilliant orange-red crown, ht. 19 in. AWARD OF MERIT, BIRMINGHAM.....	0 7 6
Pearl of Dew (Triandrus Hybrid) (4), xxxx, a beautiful cross from Albatross x Triandrus , flower large and very white, with large expanded crown as in Ariadne , very distinct, ht. 14 in.....	1 10 0
Phineus (Incomparabilis) (4), xxxx, perianth sulphur, shaded canary-yellow, broad and campanulate, crown deep golden, goblet-shaped, very distinct and fine, ht. 21 in. AWARD OF MERIT R.H.S., 1919, as an Exhibition flower.....	2 2 0
Pixie (Barrii) (4), xxxx, a striking and beautiful flower of great substance, having a sulphur-white smooth imbricated perianth and a very large flat crown, canary-yellow with broad band of fiery orange-red, ht. 12 in.....	1 1 0
Primrose Gem (Triandrus Hybrid) (4), xxxx, <i>new</i> 1919, flower of the same graceful form as Queen of Spain but colour a beautiful soft primrose; a charming flower, ht. 18 in.	2 2 0
Prince Arthur (Giant Leedsii) (4), xxxx, <i>new</i> 1919, having a broad well-imbricated white perianth and a fine bold expanding crown, primrose shaded lemon, ht. 15 in.....	2 2 0
Prince Fushimi (Giant Incomparabilis) (4), xxxx, <i>new</i> 1919, flower very large with solid pure white perianth and a large open globular cup, apricot-orange shading down to a delicate cream or ivory-white, prettily crinkled and flanged. A remarkably distinct and beautiful flower; strong robust grower, ht. 16 in. AWARD OF MERIT R.H.S., 1919.....	1 10 0
Prince Rupert (Trumpet Daffodil) (4), xxxx, <i>new</i> 1921, large elegant flower, perianth creamy yellow, spreading and pointed, trumpet large, full buttery yellow, with broadly frilled open mouth, ht. 20 in.....	3 3 0
Ptolemy (Trumpet Daffodil) (3), xxxx, <i>new</i> 1921, a gigantic flower measuring 5 inches across with delicate primrose trumpet 2 inches long and 2½ inches wide at mouth which is prettily frilled; the perianth is creamy white, ht. 23 in.....	5 5 0
Queen Maya (Trumpet Daffodil) xxx½, <i>new</i> 1919, perianth cream shaded sulphur, trumpet soft canary-yellow, of beautiful form, deeply frilled expanded mouth, ht. 17 in....	0 15 0
Raeburn (Poeticus) (4), xxxx, a flower of fine quality, having smooth rounded snow-white perianth, and a large flat lemon-yellow eye, shaded dark green and broadly margined dark crimson-red, ht. 18 in. THE PREMIER POETICUS LONDON, 1913, and BIRMINGHAM, 1914	0 15 0
Ringdove (Poeticus) (6), xxxx, <i>new</i> 1914, the most perfectly formed flower of all the Poeticus and very chaste; the perianth is snowy white, very rounded, perfectly smooth, and of solid waxy texture, while the centre is heavily margined red. A perfect show flower, retaining its form up to the last, ht. 18 in.....	3 3 0
Royal Gold (Trumpet Daffodil) (4), xxxx, <i>new</i> 1921, a grand flower of fine form, with broad imbricated rich yellow perianth and a large golden trumpet deeply flanged at mouth, ht. 24 in.....	4 4 0
Seawald (Trumpet Daffodil) (3), xxx, <i>new</i> 1920, a very large flower with broad creamy perianth and large bold canary-yellow trumpet with open mouth, ht. 15 in.....	0 6 6
Silver Gift (Trumpet Daffodil) (4), xxxx, <i>new</i> 1921, one of the most lovely of white Trumpet Daffodils, flowers snowy white and of very distinct and elegant form, ht. 16 in....	3 3 0
Sir Gawain (Trumpet Daffodil) (3), xxx½, <i>new</i> 1920, a grand large elegant flower, perianth white, broad, imbricated and slightly reflexing, trumpet primrose, long and with open mouth, ht. 17 in.....	0 15 0
Wendy (Incomparabilis) (3), xxxx, a shapely and beautiful flower with well imbricated pointed white perianth and large expanded fluted crown, buff shaded apricot, ht. 10 in....	1 1 0
White Pearl (Giant Leedsii) (4), xxxx, <i>new</i> 1919, flower snowy white throughout, measuring 4¼ inches across, perianth broad, crown resembling a short broad trumpet, expanded at mouth and regularly frilled; a very lovely flower, ht. 18 in.....	1 15 0
White Star (Barrii) (3), xxx, large pure white reflexing perianth and small lemon crown with green base; a charming flower, ht. 21 in. AWARD OF MERIT BIRMINGHAM and TRURO	0 10 6
CHOICE UN-NAMED SEEDLINGS of MADAME DE GRAAFF, WEARDALE PERFECTION, KING ALFRED, etc., all beautiful	per doz. 10/6 0 1 0

Barr's "Gold Medal" Daffodils

AWARDED

**Forty-nine Gold Medals and Three Silver Challenge Cups
and Two R.H.S. Silver Cups for New Seedlings.**

Also many First-class Certificates and other high awards.

For Alphabetical Index, see page 2 of Cover.

New Seedling Varieties, see page 6.

Classification.—In the following pages we have practically adopted the 1910 classification of the R.H.S. Narcissus Committee, which we hope will be of assistance to exhibitors of Daffodils and to amateurs who desire to make a selection of distinct types. As will be seen, 10 distinct divisions have been made, together with a section (Div. XI.) at the end to take in a few unclassified species and hybrids. With each division we have given its distinguishing character.

Time of Flowering.—The relative period of flowering of the different varieties out of doors we have denoted by means of numbers after the names, (1) being the earliest, (6) being the latest.

Height.—The heights given in inches are as recorded at our Nurseries.

Quality of Flower.—Each season we go carefully over our Daffodil collection with a view to recording the quality of each variety. This we indicate by x, xx, xxx, and xxxx, giving the most marks to those we judge to be the finest. We trust this record may be found useful to amateurs in making their selections.

Cultural Marks.—* The varieties marked thus * thrive best under the shade of deciduous trees, naturalised in grass in shady nooks, or on grassy slopes facing north.

† Indicates those kinds which should be selected where Daffodils are grown in pots or for exhibition; they are, however, in most cases also splendid border varieties.

§ Indicates those Daffodils which, beside being fine border plants, make a pretty effect when naturalised in grass; they are all strong growers and free bloomers.

Time to Plant.—The best time to plant, to obtain the finest flowers, is early autumn (as early as possible), *although bulbs may be put in as late as Christmas with fairly satisfactory results*; we have planted some Daffodils as late as the second week in February and had some very good blooms in May. We recommend, however, *early* planting for best results.

Depth to Plant.—Failures with bulbs are most frequently due to their having been planted too deeply or too shallow. A good general rule to follow is to cover the bulb with soil once and a half to twice its own depth, *measuring the bulb from base to shoulder*. Thus a daffodil bulb measuring 2 inches from base to shoulder should be covered with 3 to 4 inches of soil.

DIVISION I.—TRUMPET DAFFODILS.

DISTINGUISHING CHARACTER.—TRUMPET OR CROWN AS LONG AS OR LONGER THAN THE PERIANTH SEGMENTS.

(A) YELLOW AND SULPHUR-COLOURED TRUMPET DAFFODILS.

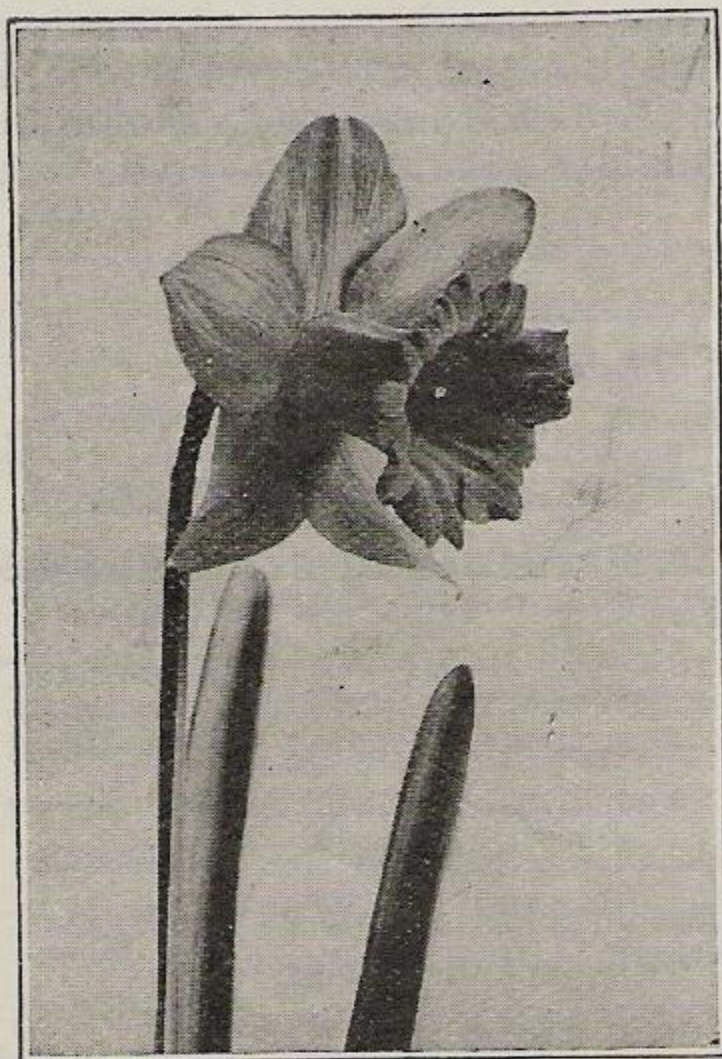
With Yellow, Lemon or Sulphur-coloured Trumpets, Perianth of same shade or lighter (but not white).

	per doz.	each.
	s. d.	s. d.
Adelgar. See New Seedling Daffodils, page 6.....	—	10 6
Aylmer. See New Seedling Daffodils, page 6.....	—	15 0
Ben Alder. See New Seedling Daffodils, page 6each £1 10s.	—	—
† C. H. Curtis (3), xxx, a handsome variety with large flower of fine form having a deep primrose broad perianth, and a bold golden yellow trumpet with expanded brim, ht. 16 in.....	10 6	1 0
† Cleopatra (4), xxxx, raised at our Nurseries, a magnificent variety, flower large and of perfect form and colour; very broad yellow imbricated perianth and long bold deep yellow trumpet, ht. 15 in. AWARD OF MERIT R.H.S. AND AT BIRMINGHAM. In April, 1915, it was awarded at Birmingham the Second Prize for the FINEST YELLOW TRUMPET DAFFODIL in the Show.....	36 0	3 6

Yellow Trumpet Daffodils—*continued.*

§† Cornelia (3), xxx, flower soft canary-yellow with expanded trumpet and broad smooth perianth, ht. 18 in.; it makes a good pot plant and is a splendid bedder. AWARD OF MERIT R.H.S., 1905.....	per doz. s. d.	each. s. d.
	per 100, 55/-	7 6 0 8
§† Emperor (3), xx, perianth deep primrose, trumpet rich full yellow; should be largely grown in flower-beds and borders and naturalised in grass; it is an excellent market flower and forces well, ht. 21 in.....	per 100, 25/-	3 6 0 4
† George Philip Haydon (3), xxx, refined flower with primrose perianth and bold canary-yellow trumpet, fluted and flanged at brim, ht. 18 in.	30 0	2 9
† Glory of Leiden (3), xx, large bold flower, trumpet rich full yellow, perianth pale yellow, sometimes with deeper yellow markings, ht. 14 in.; a good forcer. AWARDED FIRST-CLASS CERTIFICATE R.H.S., 1887.....	per 100, 35/-	5 0 0 6
§† Golden Bell (2), xx, broad light yellow twisting perianth, large bold golden trumpet, with finely frilled open mouth, free bloomer, ht. 14 in.....	per 100, 42/-	5 6 0 6
Golden Empress. See <i>New Seedling Daffodils</i> , page 7.....	each £5 5s.	— —
Golden Frill. See <i>New Seedling Daffodils</i> , page 7		— 15 0
Golden Sovereign. See <i>New Seedling Daffodils</i> , page 7.....		— 15 0
§† Golden Spur (1), xx, native of the Netherlands, perianth spreading, trumpet large and distinctly lobed, deep rich self-yellow; an early forcer and a showy Daffodil for borders and grass, ht. 18 in.....	per 100, 25/-	3 6 0 4
§† Henry Irving (1), xx, a native of the Netherlands, broad spreading yellow perianth, large yellow trumpet, handsome flower, excellent for forcing, also for cultivation in grass or borders, ht. 18 in.....	per 100, 25/-	3 6 0 4
§ Hoboken (1), xx, a pretty showy bedding Daffodil of a distinct bright self canary-yellow colour and pleasing form, trumpet well open and flanged at mouth; a good forcer, ht. 15 in.....	per 100, 21/-	3 0 0 4
† King Alfred (1), xxxxx, a remarkably handsome Daffodil which we can strongly recommend; flowers of large size, great substance, and refined finish; colour a uniform intense rich golden; trumpet large and of elegant form, with open deeply frilled mouth; very tall vigorous grower and free bloomer; foliage of a handsome bluish shade, ht. 24 in. It forces early and is greatly prized as a cut flower for vases. FIRST-CLASS CERTIFICATE R.H.S., and R.B.S. LONDON, 1899.....	per 100, 60/-	8 6 0 9

Latona. See *New Seedling Daffodils*, page 7 each £3 3s. — —



DAFFODIL LORD ROBERTS.

†**Lord Roberts** (3), xxxxx, a grand Trumpet Daffodil, raised at our Nurseries; flowers of large golden-yellow, with broad massive perianth and noble trumpet; tall grower and free bloomer, with strong constitution, ht. 23 in. AWARDED FIRST-CLASS CERTIFICATES by the R.H.S., MIDLAND DAFFODIL SOCIETY, CORNWALL DAFFODIL SOCIETY, and DEVON DAFFODIL SOCIETY. See *Illustration*

§†**Maximus** (2), xxx, a very beautiful and graceful flower of a uniform rich deep golden-yellow, perianth elegantly twisted, ht. 18 in.; it is one of the richest coloured yellow Trumpet Daffodils, but rather a shy bloomer. It seems to do best planted 9 to 12 inches deep.....

per 100, 21/- 3 0 0 4

***Minor, true** (1), a most graceful and charming very early-flowering miniature Daffodil of *Maximus* form, flowers with full yellow perianth gracefully twisted, and the miniature trumpet elegantly flanged at mouth, ht. 6 in.; prized for edgings, rock-work, and pots in cool greenhouse, now very scarce

18 0 1 9

„ „ Extra large bulbs 25 0 2 3

§**M. J. Berkeley** (2), xx½, resembling *Maximus* in shape, but colour is a clear bright yellow, the trumpet being much expanded and elegantly flanged at brim, a good showy border variety, ht. 17 ins.....

per 100, 21/- 3 0 0 4

Yellow Trumpet Daffodils—continued.

		per doz.	each.
		s. d.	s. d.
Minimus, true (1). We are glad to be again able to offer this little gem, the smallest and dwarfest of all Daffodils, producing outdoors in February dainty little trumpet flowers of a rich full yellow, height about 3 inches. It likes a peaty soil and may be naturalised on rockeries or in grass, or grown in pots or pans for the Alpine house. In 1887, during a tour in Spain, the late Mr. Peter Barr found this miniature Daffodil growing freely amongst gorse, with a south aspect. <i>For our annual supply we have to depend upon collected bulbs which are taken up while the foliage is green; in consequence there is a possibility that a few of the bulbs may not bloom the first season.</i>per 100, 25/-		3 6 0	4
† Monarch (3), xxxx, raised at our Nurseries, a large, noble and refined flower; perianth and trumpet rich full yellow and of perfect form and fine substance, growth strong and sturdy, ht. 20 in.....		16 0 1	6
* Nanus, true (1), rich full yellow, very dwarf and early, a gem for edgings and naturalising on grassy banks, etc., ht. 6 in.; now very scarce. <i>Lobularis is generally sold for it, but is very inferior.</i>per 100, 55/-		7 6 0	8
§* Obvallaris (Tenby Daffodil) (1), xx, an attractive Daffodil of medium size with flowers of pleasing symmetry, perianth and trumpet full yellow, <i>very early</i> ; it is best grown in partial shade, and is a fine variety for naturalising in grass, ht. 12 in. <i>This charming Daffodil is now becoming scarce.</i>per 100, 25/-		3 6 0	4
§† Olympia (3), xxx, a good showy variety with bright yellow perianth and a bold deep yellow trumpet of enormous size, ht. 21 in. AWARD OF MERIT FOR POT CULTURE R.H.S., 1914		10 6 1	0
Prince Rupert. See New Seedling Daffodils, page 8.....each £3 3s.		—	—
† Rev. D. R. Williamson (3), xxx, raised at our Nurseries, colour rich yellow with long handsome trumpet, a fine bold flower, ht. 19 in.....		8 6 0	9
Royal Gold. See New Seedling Daffodils, page 8.....each £4 4s.		—	—
§ Santa Maria (1), xxx, found by the late Mr. Peter Barr in Spain, very deep golden-yellow, perianth elegantly twisted, a distinct and charming early flower; recommended for naturalising in grass, woodlands, etc., ht. 14 in.....per 100, 21/-		3 0 0	4
† Talma (1), xx, a handsome decorative Daffodil for the flower border or for early forcing. The flowers are bright yellow, with a large open trumpet deeply flanged and frilled at brim, and are thrown well above the erect foliage, ht. 22 in. It may be forced into bloom as early as the end of January.....per 100, 32/6		4 6 0	5
† Tresserve (3), xxx, a handsome hybrid of Golden Spur x Emperor , flower very large with slightly campanulate canary-yellow perianth and a very bold rich yellow trumpet with wide expanded brim deeply flanged and measuring 2½ inches across, ht. 17 in.; a fine exhibition variety.....		27 6 2	6
† Van Waveren's Giant (3), xxx, a giant Trumpet Daffodil, flowers of immense size, perianth primrose and of rather campanulate form, trumpet bright yellow with very large open mouth, flanged at brim, ht. 18 in.....		12 6 1	3

(B) WHITE TRUMPET DAFFODILS.

Varieties with White Perianth and White or nearly White Trumpet.



LADY AUDREY.

Most of the Daffodils in this section thrive best in fibrous virgin loam, mixed with well-decayed leaf-soil; generally speaking they dislike manure; where, however, the soil is very poor, bone-meal or basic slag may be used (for full directions, see page 1). *The varieties marked thus * thrive best in the shade of deciduous trees, naturalised in shady grassy nooks, or on grassy slopes facing north.*

	per doz.	each.
	s. d.	s. d.
† Ailsa , xxxx, a beautiful chaste flower, perianth pure white, trumpet white, large and bold with recurved margin. AWARD OF MERIT R.H.S.....	—	17 6
† Alice Knights (1), xxx, raised at our Nurseries, the earliest of white Trumpet Daffodils. Flower of medium size, perianth white, trumpet creamy white of elegant form with prettily frilled open mouth; it lasts well, whether cut or on the plant, ht. 14 in. AWARD OF MERIT R.H.S., 1915, as a pot plant	10 6 1	0
† Catriona (4), xxx, perianth creamy white, broad, smooth and slightly campanulate, trumpet cream shaded white, open at mouth and with elegantly frilled margin, beautiful, ht. 16 in.....	—	7 6

White Trumpet Daffodils — <i>continued.</i>		per doz.	each.
		s. d.	s. d.
Helice (6), xxx, new 1919, perianth white, trumpet of a delicate cream shade, with a very elegant open flanged mouth, ht. 16 in.....		—	10 6
§† Lady Audrey (5), xxx, raised at our Nurseries, a charming flower having a white perianth slightly campanulate and a long straight trumpet widening at mouth, cream-coloured passing off white, a fine free-flowering garden plant, ht. 15 in. AWARD OF MERIT, BIRMINGHAM, 1902. See <i>Illustration</i> , page 11.....	per 100, 42/-	5 6	0 6
Leah. See <i>New Seedling Daffodils</i> , page 7.....		—	5 6
† Loveliness (4), xxx, a flower of remarkable beauty, with bold stiff snowy white perianth, broad and smooth, and a very elegant white trumpet, expanding at mouth, ht. 14 in. AWARD OF MERIT, BIRMINGHAM and TRURO.....		12 6	1 3
† Madame de Graaff (4), xxx, a graceful variety which must always take a prominent position among the pale-coloured trumpet Daffodils. The perianth is pure white, while the trumpet opens a soft primrose shade passing off almost white, ht. 16 in. It makes a pleasing pot plant for the Alpine house and will bear gentle forcing. FIRST-CLASS CERTIFICATE R.H.S., 1887.....	per 100, 35/-	5 0	0 6
* Moschatus of Haworth (The Snowy White Daffodil of the Spanish Pyrenees) (1), variable in size of flower. A gem to naturalise in grass, delighting in partial shade and on grassy slopes facing north. It also makes a pleasing pot plant for the Alpine house, ht. 6 in.	per 100, 30/-	4 0	0 5
Mrs. D. V. West. See <i>New Seedling Daffodils</i> , page 7.....	each £2 2s.	—	—
† Mrs. George H. Barr (4), xxx, a very lovely Daffodil of chaste form and highest quality, perianth snowy white and slightly campanulate, elegant white trumpet well open at mouth; a flower of great substance and smoothness, ht. 16 in. AWARDS OF MERIT R.H.S., MIDLAND DAFFODIL and CORNWALL DAFFODIL SOCIETIES, 1903.....		36 0	3 6
† Mrs. H. D. Betteridge (4), xxx, a very refined and beautiful snowy white flower, perianth well formed, broad and imbricated, with a distinct fluting on surface, trumpet of model form with elegantly flanged and fluted brim, ht. 16 in.....		16 0	1 6
† Mrs. Robert Sydenham (4); xxx, pure white broad perianth of great substance, trumpet pure white and beautifully frilled at mouth, very elegant, ht. 14 in. AWARD OF MERIT R.H.S.....		36 0	3 6
Noblesse. See <i>New Seedling Daffodils</i> , page 7.....	each £1 1s.	—	—
† Peter Barr (3), xxx, a grand variety, raised at our Nurseries, flower large and bold, of beautiful symmetry and fine substance, with pure white campanulate perianth and large handsome ivory-white trumpet of elegant outline. It is a strong grower and free bloomer, with handsome deep bluish green foliage, ht. 15 in. Awarded FIRST-CLASS CERTIFICATE R.H.S., 1902, and CORNWALL DAFFODIL SOCIETY, 1903. AWARDS OF MERIT DEVON DAFFODIL SOCIETY, R.B.S., LONDON, 1904, and at HUNTINGDON, 1906.....		36 0	3 6
† Philippe de Vilmorin (5), xxx, a large and elegant flower with white perianth and long bold cream-coloured trumpet; a good free grower with bluish-green foliage, ht. 14 in. This variety is growing freely in the rock garden of the Royal Horticultural Society at Wisley, where in spring it is the admiration of all visitors.....		21 0	2 0
Ptolemy. See <i>New Seedling Daffodils</i> , page 8.....	each £5 5s.	—	—
Silver Gift. See <i>New Seedling Daffodils</i> , page 8.....	each £3 3s.	—	—
† Tamora (4), xxx, new 1918, a most lovely flower, large, and of perfect form, perianth snow-white, broad, smooth and flat, trumpet creamy white, elegantly flanged at mouth, ht. 16 in.....		—	7 6
† The Grey Mare , xxx, a very lovely flower of large size with a solid white slightly campanulate perianth and large creamy-white trumpet, expanded and flanged at mouth, ht. 16 in.....		—	15 0
† White Knight (4), xxx, a beautiful flower, slightly drooping with snowy white smooth perianth and long straight white trumpet, ht. 16 in.....		—	7 6
§ W. P. Milner (2), xx, a charming free-flowering variety, with dainty sulphur-coloured flowers; valuable for filling small beds or for edgings and rockwork, also very effective in grass, ht. 11 in. When forced in pots or pans it is remarkably pretty, the flowers coming a pure white. AWARD OF MERIT FOR ROCK GARDEN R.H.S., 1914	per 100, 25/-	3 6	0 4

(C) BICOLOR TRUMPET DAFFODILS.

With White or Whitish Perianth and a Yellow, Lemon, or Pale Primrose Trumpet.



WEARDALE PERFECTION.

Cadfer (3), xxx, new 1920, perianth white, per doz. each.
broad and slightly twisted, trumpet long, s. d. s. d.
lemon-yellow, ht. 15 in..... 10 6 .1 0

Creusa. See New Seedling Daffodils, page 6 — 15 0

Cyane. See New Seedling Daffodils, page 6
each £3 3s — —

†**Cygnnet** (4), xxx, perianth white, elegantly twisted, long bold trumpet of a soft lemon-yellow, elegantly rolled back at mouth, beautiful. A tall free grower with fine blue-green foliage, ht. 18 in. AWARDS OF MERIT R.H.S., LONDON, MIDLAND DAFFODIL SOCIETY, and ROYAL BOTANIC SOCIETY, 1902...per 100, 55/- 7 6 0 8

Danesfield. See New Seedling Daffodils, page 6.....each £2 2s. — —

†**Duke of Bedford** (2), xxx, a handsome flower, measuring 4½ inches across; perianth broad and pure white, trumpet clear soft yellow, very large and of fine substance and form; it flowers very early, opening before *Horsfieldii*, and has a pleasing fragrance, ht. 18 in. Awarded FIRST-CLASS CERTIFICATES at BIRMINGHAM, MANCHESTER, and EDINBURGH, 1899..... 16 0 1 6

Eldred. See New Seedling Daffodils, page 6..... — 5 6

†**Empress** (3), xx, perianth white and of great substance, trumpet rich yellow, foliage blue-green; valued for beds, borders and planting in grass, also for cutting, ht. 20 in. per 100, 25/- 3 6 0 4

„ „ „ Extra strong forcing bulbs, per 100, 32/6 4 6 0 5

†**E. T. Cook** (4), xxx, a fine flower with bold broad white perianth and a rich deep chrome-yellow trumpet, ht. 18 in..... 5 6 0 6

§†**Glory of Noordwijk** (2), xxx, a large showy flower with creamy white perianth and bold bright yellow trumpet open at mouth and elegantly flanged, ht. 18 in. AWARD OF MERIT R.H.S., 1902.....per 100, 42/- 5 6 0 6

§†**Grandis** (*Grandee*) (5), xx, perianth pure white, trumpet yellow and straight; flower of great substance; valuable for succession, ht. 15 in.....per 100, 21/- 3 0 0 4

†**Gwendolin** (3), xxx, white perianth and long straight cream-coloured trumpet, a refined flower of beautiful form, ht. 18 in. Specially recommended for growing in pots, as when the flowers are opened under glass they are almost pure white..... 8 6 0 9

§**Horsfieldii** (2), xx, a favourite old Daffodil, perianth white, trumpet full yellow, a very effective bedder, ht. 14 in.....per 100, 25/- 3 6 0 4

†**Hymen** (3), xxx½, new 1919, flower of elegant form and delicate colour, perianth white, trumpet broad, soft primrose shaded cream and passing off almost white, mouth expanded and frilled, ht. 16 in..... 48 0 4 6

†**J. B. M. Camm** (3), xxx, a refined flower of fine symmetry; perianth white and of great substance, trumpet rich deep cream of elegant form, a fine bedder, ht. 12 in. AWARDED FIRST-CLASS CERTIFICATE R.H.S., 1884.....per 100, 25/- 3 6 0 4

†**Lamond** (3), xxx, new 1919, flower a pretty soft colour, perianth cream shaded sulphur, trumpet primrose shaded sulphur, of elegant form, prettily frilled and flanged mouth, ht. 19 in..... — 5 6

***Lent Lily** (2), x, perianth whitish, trumpet yellow, ht. 9 in.; only suitable for naturalising in grass, woodlands, etc.; being collected bulbs, only a proportion will bloom the first season..... per 1000, 35/-; per 100, 4/- 0 7 —

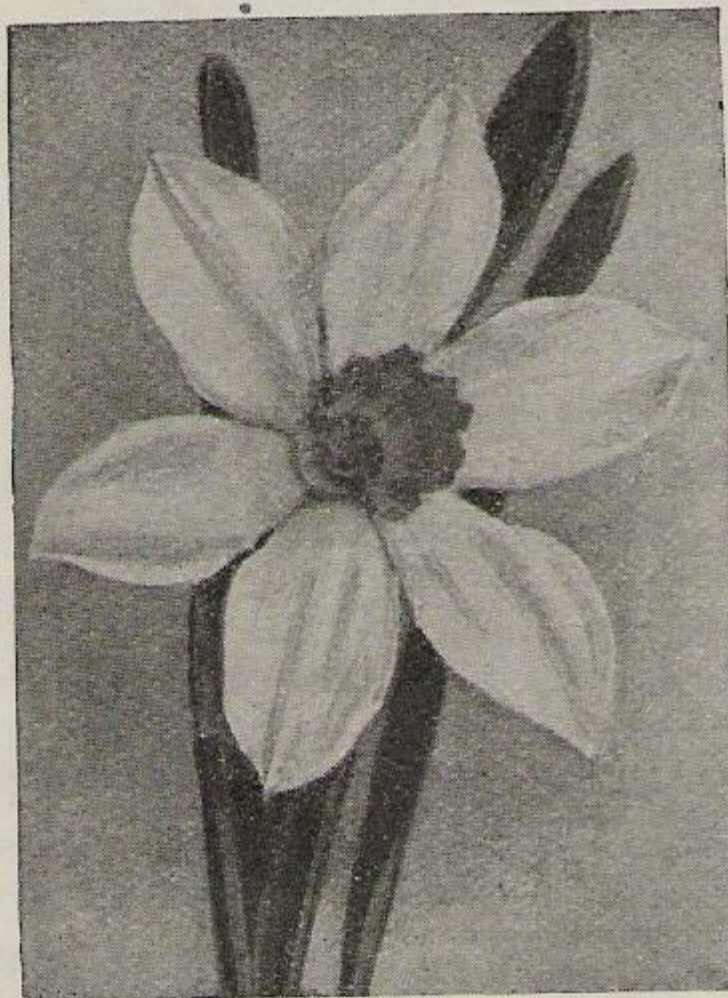
***Lobularis** (1), xx, flowers small with sulphur perianth and yellow trumpet, a pretty little dwarf Daffodil, valuable for edgings, etc., ht. 9 in.; like the **English Lent Lily**, it requires to be established before flowering freely.....per 100, 21/- 3 0 0 4

§**Madame Plemp** (4), xx, a bold erect showy flower with large white twisted perianth and very long golden-yellow trumpet, ht. 16 in.; a valuable variety for cutting. AWARD OF MERIT R.H.S.....per 100, 25/- 3 6 0 4

Mesha (3), xxx, new 1920, a dainty flower of medium size, perianth white, elegantly twisted, trumpet creamy white, prettily frilled at brim, ht. 13 in..... 36 0 3 6

Bicolor Trumpet Daffodils—continued.

	per doz.	each.		
	s.	d.	s.	d.
§ Mrs. Buchanan (1), xx, perianth cream, campanulate and slightly twisted, trumpet soft primrose with prettily flanged open mouth; flower of a very distinct and delicate shade; one of the first bicolor trumpets to open, ht. 16 in.....per 100, 42/-	5	6	0	6
† Pharaoh (4), xxx, large flower with broad creamy-white perianth, and large bold creamy-yellow trumpet, well expanded at mouth, and elegantly crinkled, ht. 14 in. AWARD OF MERIT, BIRMINGHAM.....	10	6	1	0
Queen Maya. See <i>New Seedling Daffodils</i> , page 8.....	—	15	0	0
St. Wendrona , xxx½, new 1919, flower of a beautiful soft colour, perianth cream, trumpet delicate primrose, of elegant form, and prettily frilled at mouth, ht. 13 in. each £1 1s.	—	—	—	—
Seawald. See <i>New Seedling Daffodils</i> , page 8.....	—	6	6	0
† Seraphine (2), xxx, raised at our Nurseries, flower of great size, perianth creamy-white, broad, and with elegant twist, trumpet very large and bold, of a soft delicate lemon, with broadly crimped open mouth, very beautiful, ht. 18 in.....	36	0	3	6
Sir Gawain. See <i>New Seedling Daffodils</i> , page 8.....	—	15	0	0
† Spring Glory (1), new 1914, a very early showy bicolor Daffodil coming in with Golden Spur , perianth white, broad and spreading, trumpet large and handsome bright yellow with open frilled mouth, a splendid forcing variety, ht. 22 in.....	8	6	0	9
† Victoria (1), xx, flowers large, erect, and of fine form, creamy white broad perianth, trumpet clear yellow, large, broad, and of great substance. It forces freely, and under glass the perianth comes pure white, ht. 16 in. AWARD OF MERIT R.H.S., 1897	3	0	0	4
per 100, 21/-	4	6	0	5
„ „ „ Extra large forcing bulbs, per 100, 32/6	7	6	0	8
§ Walwyn (3), xx½, new 1920, perianth white, long and pointed, trumpet long and narrow, delicate primrose, an elegant flower, ht. 14 in.....	7	6	0	8
† Weardale Perfection (4), xxxxx, this fine Daffodil still ranks high among the Giant Trumpets as a flower of refined beauty; it has a large white perianth, and a soft primrose trumpet, of great size, ht. 24 in. It makes a good pot-plant and may be gently forced. AWARDED A FIRST-CLASS CERTIFICATE R.H.S., 1894, and PREMIER PRIZE by the MIDLAND DAFFODIL SOCIETY. Blooms of this Daffodil have been exhibited measuring 5 inches across. See <i>Illustration</i> , page 13.....per 100, 55/-	7	6	0	8
§ William Goldring , the <i>Swan's Neck Daffodil</i> (3), xx, an elegant flower with long snow-white tapering perianth, gracefully drooping over the primrose trumpet, ht. 16 in.....per 100, 21/-	3	0	0	4



INCOMPARABILIS LUCIFER.
Example of Flower in Division II.

DIV. II.—INCOMPARABILIS.

LARGE CHALICE-CUPPED DAFFODILS OR STAR NARCISSI.

DISTINGUISHING CHARACTER.—CUP OR CROWN MEASURING FROM ONE-THIRD TO NEARLY THE LENGTH OF THE PERIANTH SEGMENTS.

All the varieties have yellow or white perianth and yellow or red-stained cups.

These beautiful **Star Narcissi** commence flowering in March, and furnish a succession of bloom throughout April. All are of elegant beauty, and as cut flowers are extensively used for furnishing vases and table bouquets. For this purpose they should be grown in quantity in boxes and forced for early bloom (see pages 1 and 2). They make charming pot plants, while in beds and borders they are very showy and naturalised in grass they produce a graceful effect. We illustrate *Lucifer* as an example of a flower in this Division.

	per doz.	each.		
	s.	d.	s.	d.
§ Anteros (3), xx½, fine bold flower, perianth cream, smooth, imbricated, and slightly reflexing, bold yellow cup, globular and fluted at mouth, ht. 19 in.....	8	6	0	9
§ Autocrat (3), xx, broad full yellow perianth, cup yellow, much expanded, a showy flower and free grower, ht. 20 in.....per 100, 21/-	3	0	0	4

Narcissus Incomparabilis – continued.

	per doz.	each.	s.	d.	s.	d.
§ Beauty (3), xx, a fine bold flower, perianth sulphur-yellow, with a deeper yellow bar down the centre, cup yellow margined orange-scarlet, tall, strong grower, ht. 23 in.; showy in beds and borders, and a useful variety for naturalising in grass, woodlands, etc., and for cutting. AWARD OF MERIT R.H.S.....per 100, 21/-	3	0	0	4		
§† Bedouin (4), xxx, flower large, perianth broad and white, cup fiery orange-scarlet, elegantly fluted and crinkled at brim; strong free grower, ht. 22 in. FIRST-CLASS CERTIFICATE, EDINBURGH. AWARD OF MERIT, LIVERPOOL. AWARD OF MERIT FOR GARDEN DECORATION AND CUTTING R.H.S., 1914.....	25	0	2	3		
† Belarius (4), xxx½, a fine large bold flower of <i>Lady Margaret Boscawen</i> type, having a white perianth and a large straight canary-yellow crown well frilled at margin, ht. 25 in.....	60	0	5	6		
† Bernardino (3), xxxx, a very beautiful flower, with large broad creamy perianth and a very large pale cup, prettily fluted and heavily stained deep orange-apricot, a good free grower, ht. 22 in. AWARD OF MERIT, HAARLEM, 1915.....	42	0	3	9		
§† Blackwell (1), xxx, <i>earliest of Chalice-cupped Daffodils</i> ; perianth primrose-yellow, cup straight, deeply fluted, yellow heavily stained fiery orange-scarlet, bold handsome flower lasting long in condition, ht. 24 in.; excellent for gentle forcing.....	10	6	1	0		
† Blazing Star (4), xxx, flower very large, perianth rich yellow, crown large and spreading, rich golden with deep margin of fiery red; a wonderfully effective flower, ht. 24 in.....	16	0	1	6		
§† Bonaparte (1), xxx, <i>new</i> 1919, a giant-flowered yellow variety, with very large open expanded crown, bold, handsome and showy, ht. 16 in.....per 100, 42/-	5	6	0	6		
Casimir. See <i>New Seedling Daffodils</i> , page 6.....	—	15	0			
† Citriona (4), xxx, <i>new</i> 1912, a beautifully formed flower, soft citron-yellow, almost a self, a charming variety, ht. 18 in.....	27	6	2	6		
§ C. J. Backhouse (2), xx, a very showy variety, with bright yellow perianth, and a long rich orange-red cup, ht. 20 in.....per 100, 21/-	3	0	0	4		
§† Constellation (3), xx, flower large, perianth white, cup bright yellow, prettily crimped at brim and margined orange, valuable for cutting, ht. 20. in....per 100, 35/-	5	0	0	6		
† Croesus (4), xxxx, a very fine flower of great substance with large rounded and imbricated pale primrose perianth and a wide expanded crown of deep red. AWARD OF MERIT, BIRMINGHAM, 1911. FIRST-CLASS CERTIFICATE R.H.S., 1912...each £1 1s.	—	—				
§ Cynosure (3), x, a showy flower, primrose perianth changing to white, cup stained orange-red, free grower, good to naturalise, ht. 18 in.....per 100, 17/6	2	6	0	3		
§ Fireglow (3), xxx, a very showy flower with primrose-yellow perianth and a straight crown, glowing orange shading down to gold, prettily frilled at margin, ht. 16 in.....	10	6	1	0		
§ Firelight (1), xx, a very showy bedding variety, resembling <i>Ladybird</i> , flowers of medium size with bright yellow perianth and straight golden-yellow crown prettily fluted and suffused a brilliant orange-red, ht. 14 in.....per 100, 32/6	4	6	0	5		
† Fleetwing (3), xxx, large flower of beautiful form and fine substance, perianth pure white, crown primrose-yellow.....	21	0	2	0		
§† Frank Miles (3), xx, flower soft clear yellow, with gracefully twisted perianth, a charming Daffodil for borders and naturalising in grass; also much prized for cutting, ht. 22 in.....per 100, 25/-	3	6	0	4		
Gladiator. See <i>New Seedling Daffodils</i> , page 7.....each £10 10s.	—	—				
§† Gloria Mundi (3), xxx, a handsome flower, with rich yellow perianth and large open crown heavily stained rich orange-scarlet, ht. 19 in. FIRST-CLASS CERTIFICATES R.H.S. and MIDLAND DAFFODIL SOCIETY, 1887.....per 100, 25/-	3	6	0	4		
† Golden Apricot (5), xxx, <i>new</i> 1919, large bold flower, perianth white, crown soft yellow deeply shaded apricot, a pleasing colour, ht. 20 in.....	—	7	6			
† Great Warley (4), xxx, a handsome flower after the style of <i>Narcissus Lady Margaret Boscawen</i> , but larger, perianth white, broad and massive, crown clear yellow, measuring 1½ inches across, ht. 18 in. FIRST-CLASS CERTIFICATES R.H.S. and BIRMINGHAM, 1904.....	60	0	5	6		

Narcissus Incomparabilis—*continued*.

	per doz.	each.
	s. d.	s. d.
† Homespun (3), xxx, a refined flower with large rounded light yellow perianth, well imbricated, and a large rich yellow frilled crown, ht. 16 in. Awarded several prizes...	7 6	0 8
§ Lachlan (3), xx½, <i>new</i> 1920, large bold creamy-white perianth and bright yellow crown, well frilled at margin, a good border variety, ht. 18 in.....per 100, 42/-	5 6	0 6
§ Ladybird (3), xx, a charming showy little Daffodil, and most valuable for bedding, flower with twisted perianth of brilliant yellow and frilled crown, fiery scarlet, shading down to gold, ht. 14 in.....per 100, 21/-	3 0	0 4
† Lady Margaret Boscawen (3), xxx, flowers of great size with a snowy white broad perianth and a large bold expanded golden-yellow crown, ht. 19 in. May be gently forced. FIRST-CLASS CERTIFICATE R.H.S., 1898.....	17 6	1 8
§† Lucifer (3), xxx, a very showy flower, perianth white, cup an intense glowing orange-red, colour lasting well in the sun, strong grower and free bloomer, ht. 17 in. A fine bedder, and will also bear gentle forcing. FIRST-CLASS CERTIFICATES R.H.S., LONDON, and MIDLAND DAFFODIL SOCIETY, BIRMINGHAM, 1901.....per 100, 25/-	3 6	0 4
§† Lulworth (4), xx, white perianth, cup bright orange-red, showy, ht. 14 in. ,, 21/-	3 0	0 4
† Malcolm (3), xxx, <i>new</i> 1919, perianth creamy-white, shaded primrose at base, bright yellow crown of elegant form, deeply fluted; charming as a cut flower and a fine border variety, ht. 22 in.....	30 0	2 9
† Michael Angelo (3), xxx, a lovely flower, measuring 4 inches across, with very broad white perianth and large open spreading crown, canary-yellow prettily frilled, having a striking border of fiery scarlet, ht. 18 in.....	—	5 6
Morning Glory. See <i>New Seedling Daffodils</i> , page 7.....each £1 1s.	—	—
§ Nestor (4), xx½, perianth creamy-white, flushed canary at base, cup large and globular, golden yellow, elegantly crimped at margin, showy, ht. 21 in.....	5 6	0 6
† Pedestal (4), xxx, a grand large flower of great substance, perianth creamy-white very broad, flat, and imbricated, crown rich yellow, long and straight, of fine erect bearing, ht. 16 in. AWARD OF MERIT R.H.S., 1912.....	36 0	3 6
Phineus. See <i>New Seedling Daffodils</i> , page 8.....each £2 2s.	—	—
† Pilgrim (3), xxx½, a beautiful cool-looking flower of good size with smooth sulphur-white rounded perianth and pale lemon cup.....	—	3 6
Prince Fushimi. See <i>New Seedling Daffodils</i> , page 8.....each £1 10s.	—	—
Seville (3), xxx, a remarkably striking and beautiful flower, large circular snowy white perianth, slightly reflexed and well imbricated, crown flat and prettily fluted, larger than a half-crown, of a rich deep Seville-orange colour, ht. 18 in. AWARD OF MERIT R.H.S., 1912.....	—	30 0
§† Sir Watkin (2), xxx, handsome bold flower, perianth primrose, cup yellow, very slightly tinged orange, ht. 21 in.; valuable for bedding, or planting in grass; it forces well, and is greatly prized for cutting.....per 100, 21/-	3 0	0 4
„ „ „ „ <i>Extra large bulbs</i> , per 100, 30/-	4 0	0 5
† Steadfast (5), xx, a fine bold flower, with well-imbricated white perianth and cylindrical rich yellow crown, an effective bedder, ht. 14 in.....per 100, 17/6	2 6	0 3
Wendy. See <i>New Seedling Daffodils</i> , page 8.....each £1 1s.	—	—
† Whitewell (4), xxx, flower large and of fine form, with broad, rounded, creamy perianth of good substance, and a large expanded chrome-orange crown 1½ inches across and prettily fluted, ht. 18 in. AWARD OF MERIT, HAARLEM, 1915.....	17 6	1 8
§ Will Scarlett (6), we consider this variety worth xxx for the remarkable fiery orange-red colouring of its large cup, which opens widely at mouth and is elegantly crimped, perianth creamy white; a striking flower, ht. 15 in. FIRST-CLASS CERTIFICATE R.H.S., 1898, as a decorative flower.....	16 0	1 6
§† Yellow Giant (1), xxx, <i>new</i> 1918, a handsome border variety with large bold flowers, measuring 3½ inches across, light yellow perianth and large open golden crown	7 6	0 8
† Yellow Standard (1), xxx, <i>new</i> 1918, flower very large and handsome, measuring 4 inches across, with citron-yellow tapering perianth and rich golden-yellow crown; a fine garden plant, and very handsome when grown in pots. AWARD OF MERIT AS A POT PLANT R.H.S., APRIL, 1919.....per 100, 42/-	5 6	0 6

DIVISION III.—BARRII.

SHORT-CUPPED DAFFODILS, OR STAR NARCISSI.

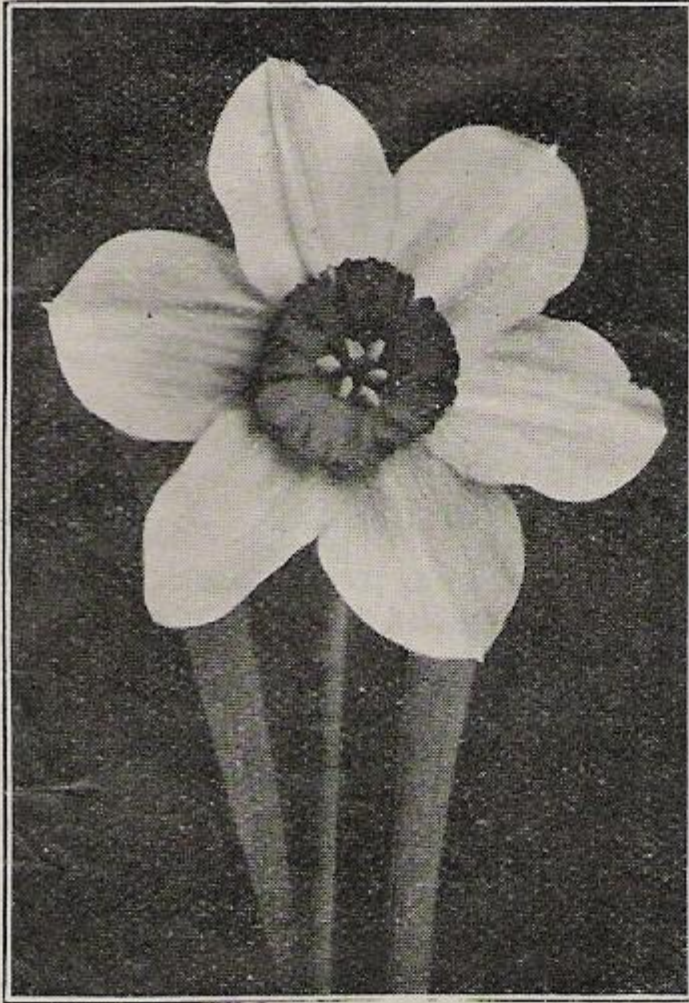
(Including those hitherto classed as **Burbidgei**.)

DISTINGUISHING CHARACTER.—CUP OR CROWN MEASURING LESS THAN ONE-THIRD THE LENGTH OF THE PERIANTH SEGMENTS.

All the varieties have yellow or white perianth and yellow or red-stained cups.

For a long time trouble was being experienced in the placing of certain new seedlings under the **Barrii** and **Burbidgei** sections, as the two divisions ran so much into one another. The revising committee therefore decided to make only one section of them, retaining the name **Barrii**.

The chaste beauty of these shorter-cupped Narcissi is the more highly appreciated when the cut flowers are seen arranged in vases. The brilliancy of colouring in the cups of some, and the dainty elegance of others, render them all more or less valuable exhibition flowers. The cheaper kinds we can strongly recommend for beds and borders, and for naturalising in grass, woodlands, wild gardens, etc.



BARRII SUNRISE.

Example of a Flower in Division III.

		per doz. each.			
		s.	d.	s.	d.
† Adonia (6), xxx, perianth broad, soft-clear yellow cup, prettily fluted, deep orange-red, the colour not burning in the sun; ht. 17 in., a good free grower and excellent for cutting.....		10	6	1	0
† Albatross (5), xxx, perianth white, cup pale citron-yellow, frilled and edged orange-red, beautiful, fine for cutting, ht. 24 in. It may be gently forced. FIRST-CLASS CERTIFICATE R.H.S., 1894.....per 100, 21/-		3	0	0	4
† Anchorite (5), xxxxx, new 1914, a very cool-looking chaste flower, having broad long snowy white perianth of great substance and large spreading crown of a delicate lemon-yellow, prettily frilled at margin and having a dark green eye, ht. 19 in. AWARD OF MERIT R.H.S., 1918.....		—	7	6	
§† Barbara Holmes. See Lady Godiva.					
† Blood Orange (4), xx, a well-shaped broad creamy perianth, cup brilliant orange-red, very showy, ht. 18 in.; it should be cut young to preserve colour.....per 100, 25/-		3	6	0	4
Bonfire. See New Seedling Daffodils , page 6.....		—	12	6	
Branston , this resembles too closely Lady Godiva to be offered as a distinct variety.					
† Challenger (5), xxxxx, a magnificent flower measuring more than 3 inches across, of fine form, solid Poeticus-white perianth and much expanded crown measuring about 1 inch across, soft canary with a striking broad margin of brilliant fiery red.....each £1 5s.		—		—	
† Cœur de Lion (4), xxx, a brilliantly coloured flower of good form, perianth delicate primrose, cup fiery deep orange-red right down to the base, remarkably striking, ht. 16 in. Coloured plate in "The Garden," August 19th, 1911...per 100, 42/-		5	6	0	6
† Conspicuous (4), xxx, a flower of great beauty and refinement, and a favourite with all, bright yellow perianth, and broad short cup, conspicuously edged bright orange-scarlet, ht. 20 in., a very lasting flower, prized for cutting. FIRST-CLASS CERTIFICATE R.H.S.....per 1000, 130/-; per 100, 14/6		2	0	—	
" " " Extra strong bulbs, per 100, 17/6		2	6	0	3
† Coral Queen (4), xxx, new 1914, a very lovely flower, perianth white, crown well expanded, of a delicate citron colour with broad margin of pale coral-buff, ht. 16 in....		16	0	1	6
† Cossack (4), xxxxx, a beautiful and striking flower with broad white solid perianth slightly reflexing, cup large and spreading and of intense dark orange-red; a grand exhibition variety, ht. 18 in.....		25	0	2	3
† Dell (5), xxxxx, new 1914, a very refined flower with broad rounded white perianth well imbricated, and a bright lemon crinkled cup having a green centre. A first-class exhibition variety, ht. 16 in.....		25	0	2	3
Discus. See New Seedling Daffodils , page 6.....		—	7	6	

Narcissus Barrii—continued.per doz. each
s. d. s. d.

† Dorothy (3), xxx, a striking flower which might be described as an improved Firebrand, perianth cream, cup very dark orange-red, ht. 13 in.....	—	5	6
† Dosoris (4), xxxx, a lovely flower, with broad white perianth and a very large flattened crown of a fiery salmon-scarlet throughout, very fine, ht. 12 in.....	21	0	2 0
† Elgiva (3), xxxx, new 1914, a very attractive variety with cream-coloured spoon-shaped perianth and very large spreading crown, deep apricot-orange, prettily fluted, ht. 18 in.....per 100, 42/-	5	6	0 6
† Fair Maiden (4), xxx, a beautiful flower, after the style of <i>Seagull</i> , but of better form, perianth pure white very broad and imbricated, crown open and elegantly fluted, yellow with orange-buff margin, strong free bloomer, fine for cutting, ht. 22 in. per 100, 21/-	3	0	0 4
§† Firebrand (3), xx, a small but very brilliantly coloured flower, perianth creamy white shaded lemon at base, cup prettily fluted and of an intense fiery red, ht. 17 in. It makes a charming decorative pot plant and will bear gentle early forcing. A valuable cut flower and very effective in grass.....per 100, 27/6	3	9	0 4
† Furnace (2), xxxx, flower large, perianth pale canary, cup expanded, elegantly fluted and frilled and of the most brilliant deep fiery red with crimson tinge, ht. 12 in....	—	10	6
§† Gay Hussar (3), xxx, new 1918, very showy and attractive, perianth primrose, crown wide and spreading, brilliant scarlet-orange, ht. 16 in.....	7	6	0 8
§ Glitter (5), xx, a rounded flower, with broad yellow perianth, cup edged brilliant orange-red, a good showy bedder, ht. 14 in. AWARD OF MERIT, BIRMINGHAM, 1907 per 100, 21/-	3	0	0 4
Harpagon. See <i>New Seedling Daffodils</i> , page 7.....each £1 10s.	—	—	—
Horizon. See <i>New Seedling Daffodils</i> , page 7.....	—	6	6
† Incognita (4), xxx, a beautiful flower, with white perianth and large flattened frilled crown, bright yellow margined apricot-orange, ht. 16 in.....	10	6	1 0
† Jasper (4), xxx, a most striking and beautiful flower, perianth of fine form, very pale primrose, crown large and flat, of a very rich fiery red, ht. 15 in.....	30	0	2 9
§† Lady Godiva (<i>syn.</i> Barbara Holmes) (4), xxx, a pretty sport from Barrii conspicuus , perianth white, cup broad and short, yellow conspicuously edged bright orange-scarlet, ht. 20 in. AWARD OF MERIT R.H.S., 1903.....per 100, 27/6	3	9	0 4
† Major Spurrell (5), xxx, an attractive flower with broad snowy white perianth and expanded crown yellow deeply edged brilliant dark orange-red, ht. 12 in. AWARD OF MERIT R.H.S., 1901.....	7	6	0 8
§† Marcella (4), xx½, new 1919, perianth creamy-white with sulphur flush at base, cup brilliant scarlet shading down to bright yellow, showy, ht. 15 in.....	36	0	3 6
† Marie Louise (5), xxxx, new 1911, a very lovely striking flower with white perianth and large fluted globular cup of an intense scarlet throughout, ht. 18 in.....	—	7	6
§ Mascotte (4), xx, perianth white, broad and slightly reflexing, cup yellow broadly bordered orange-scarlet, an attractive bedder, ht. 14 in.....per 100, 25/-	3	6	0 4
Masterpiece. See <i>New Seedling Daffodils</i> , page 7.....	—	3	6
† Messina (4), xxxx, a very beautiful flower, measuring 3¼ inches across, with snowy white rounded perianth and a flat eye of brilliant scarlet throughout, ht. 15 in. (Coloured plate can be had for 4d.).....	—	15	0
† Miss Willmott (4), xxxx, new 1911, large firm flower measuring 3½ inches across, perianth white, of good form, crown large, lemon-yellow edged bright orange-red; a vigorous tall grower and good forcer. FIRST-CLASS CERTIFICATE R.H.S., 1911.....	60	0	5 6
§ Mopsa (4), xx½, flower approaching near to a <i>Poeticus</i> , perianth creamy-white, slightly reflexed, cup lemon-yellow edged fiery red, ht. 15 in.....	60	0	5 6
Nannie Nunn. See <i>New Seedling Daffodils</i> , page 7.....	—	15	0
Nysa (4), xxx, new 1919, perianth white slightly reflexing, cup large and expanded brilliant orange-scarlet, prettily gauffered, very striking, ht. 19 in.....	—	7	6
† Occident (5), xxx, flower of model form, perianth delicate canary and very flat, cup fiery orange right down to base, ht. 16 in. AWARD OF MERIT R.H.S., 1903.....	5	6	0 6
Olivia (5), xxxx, new 1919, perianth solid pure white, slightly reflexing, crown large, flattened and fluted, canary-yellow, with very broad well-defined scarlet margin	—	10	6
Ormolu. See <i>New Seedling Daffodils</i> , page 8.....	—	7	6
† Ornament (4), xxx, new 1913, a showy flower with broad soft primrose perianth, crown elegantly fluted and coloured throughout fiery scarlet, colour lasting well, good forcer, ht. 14 in.....	8	6	0 9

Narcissus Barrii—continued.

	per doz.	each.	
	s. d.	s. d.	s. d.
† Pandora (4), xxx, an elegant pendent flower with white perianth slightly shaded sulphur, and a buff-orange expanded and fluted cup, ht. 18 in.....	—	5	6
Pixie. See <i>New Seedling Daffodils</i> , page 8.....each £1 1s.	—	—	—
† Pyrrha (5), xxx, new 1919, a very pretty smallish round flower, perianth white, broad and reflexing, cup broad and expanded, bright yellow prettily margined orange-scarlet, ht. 20 in.....	—	7	6
† Radiant (5), xxx, a striking and beautiful flower with large broad snowy white perianth, large open spreading crown with deep golden and green centre very broadly margined intense dark fiery red, ht. 15 in.....	25	0	2 3
† Red Beacon (4), xxx, new 1910, a lovely flower which immediately attracts one by its brilliantly coloured cup; the perianth is ivory-white, broad and of great substance, slightly shaded sulphur at base, cup prettily fluted and of the most intense fiery orange-red, ht. 15 in. AWARDED FIRST-CLASS CERTIFICATE NORTH OF ENGLAND HORTICULTURAL SOCIETY, 1915.....	25	0	2 3
§† Red Chief (4), xxx, an attractive flower, perianth pure white, crown flattish with broad margin of fiery orange-red and prettily fringed at edge, ht. 15 in. AWARD OF MERIT, BIRMINGHAM, 1909.....	16	0	1 6
† Red Emperor (4), xxx, a lovely flower, perianth creamy-white slightly reflexing, cup a flattened disc, remarkably large, prettily fluted, and of a fiery salmon-orange throughout, ht. 15 in.....	25	0	2 3
§† Rosalind (5), xxx, perianth broad and solid white, slightly inclined to reflex, cup bright yellow deeply edged fiery scarlet, handsome, ht. 13 in.....per 100, 21/-	3	0	0 4
§† Rosella (4), xx, perianth creamy-white, broad and imbricated, crown flattish and of a salmon-scarlet throughout, showy, often twin-flowered, ht. 17 in.....per 100, 21/-	3	0	0 4
§† Royal Star (4), xxx, a very showy flower, measuring 4½ inches across, perianth cream shaded sulphur, developing to white, crown very large and flat, prettily fluted, opening brilliant orange shaded yellow, but soon developing to a most striking fiery orange-red; good for grass and cutting, ht. 18 in.....per 100, 42/-	5	6	0 6
† Ruby , xxx, flower of medium size and perfect rounded form, broad imbricated perianth and a pretty flat fiery red cup, ht. 18 in. AWARD OF MERIT, TRURO, 1912.....	30	0	2 9
† St. George (5), xxx, lovely exhibition flower, broad rounded ivory-white perianth and striking <i>Poeticus</i> eye, full of colour, ht. 15 in.; excellent for cutting...per 100, 30/-	4	0	0 5
§† Seagull (3), xxx, a charming flower, large pure white perianth, cup canary edged apricot, fine for cutting, a strong free grower, with blue-green foliage, ht. 25 in. May be gently forced.....per 100, 25/-	3	6	0 4
§† Sequin (5), xx, solid white perianth and bright yellow crown flattened against the perianth like a golden coin, ht. 12 in.....per 100, 25/-	3	6	0 4
† Sheba (5), xxx, new 1911, a flower of the highest quality, with large snowy white spreading perianth and a remarkable striking centre of dark fiery crimson, very beautiful, ht. 18 in. AWARD OF MERIT, BIRMINGHAM, 1911.....each £1 1s.	—	—	—
§ Sunny Lass (3), xx½, new 1919, a very showy flower, perianth white, cup expanded, bright yellow, very broadly margined scarlet; a good bedder, ht. 15 in.....	21	0	2 0
§† Sunrise (2), xxx, very distinct and beautiful, perianth white with a broad primrose bar down the centre of each petal, crown expanded and elegantly fluted, bright orange-yellow with fiery scarlet margin, ht. 18 in. May be gently forced. FIRST-CLASS CERTIFICATE, BIRMINGHAM, 1910. AWARD OF MERIT FOR CUTTING R.H.S., 1914.....	36	0	3 6
† The Geisha (3), xxx, new 1914, a very distinct and pretty variety with pure white perianth and a globular flanged crown, apricot shading to lemon with white and lemon markings at margin, ht. 16 in.....	21	0	2 0
† Torchlight (4), xxx, broad pale primrose perianth, bold open crown, golden-orange shaded fiery scarlet, flower of good form, very attractive, ht. 14 in....per 100, 30/-	4	0	0 5
† Viola (4), xxx, new 1919, perianth ivory-white, cup lemon with greenish eye, prettily fluted, ht. 15 in.....	25	0	2 3
† Vivid (4), xx, ivory-white perianth, cup glowing orange-red; a showy and striking flower, ht. 15 in.....per 100, 21/-	3	0	0 4
White Star. See <i>New Seedling Daffodils</i> , page 8.....	—	10	6
† Wildfire (5), xxx, new 1911, a very distinct and pretty flower, perianth sulphur shaded cream, crown fiery brick-red shading down to a green centre, ht. 14 in.....	16	0	1 6
Zingara (4), xxx, new 1913, a large bold flower of bright showy appearance, having a white perianth prettily shaded sulphur at base, and a spreading brilliant yellow crown conspicuously margined fiery scarlet; of sturdy robust growth, ht. 22 in. AWARD OF MERIT R.H.S. as a decorative flower.....	10	6	1 0

DIVISION IV.—LEEDSII.

EUCHARIS-FLOWERED OR SILVER-WHITE FRAGRANT STAR NARCISSI.

Comprising all Star Narcissi (large chalice-cupped and short-cupped) which have pure white or silvery white perianth segments and cup or crown white, cream, buff-orange, apricot or pale citron.

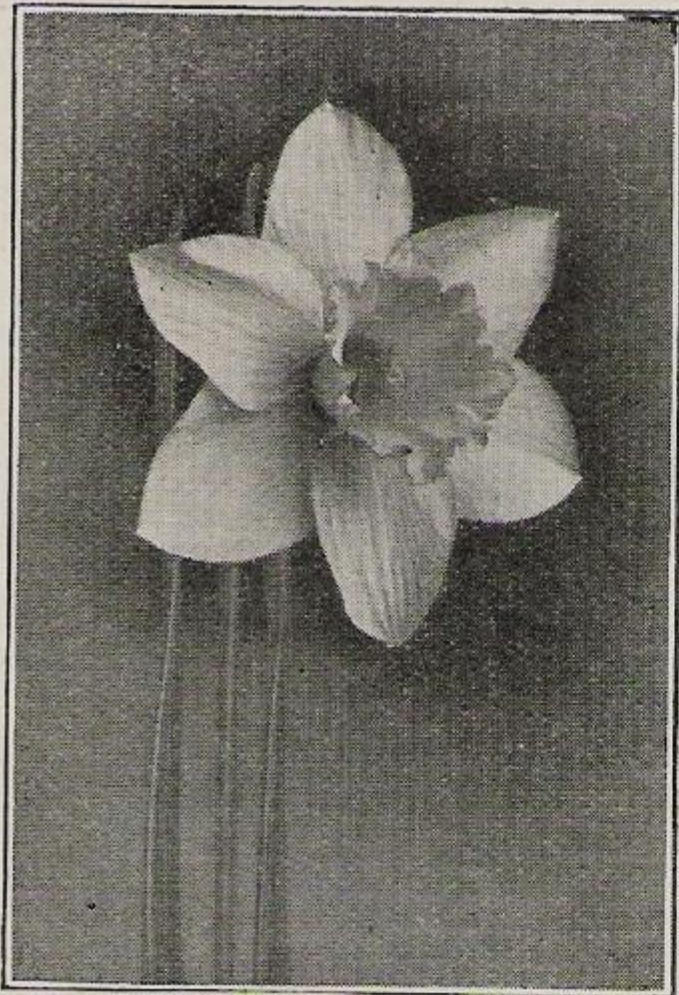
In the working out of the new classification, the revising committee felt that it would be unwise to break up this section and distribute it among the Incomparabilis and Barrii forms, seeing how distinct a "colour" section it was, and how well known to all Daffodil growers.

These chaste and beautiful Daffodils are highly prized for indoor decoration, while to cut for bouquets their fragrant flowers are greatly in demand. Plant 3 or 5 bulbs in a 5-inch pot. In flower beds and borders they are most charming, while naturalised in grass they produce a lovely effect.

		per doz.		each.	
		s.	d.	s.	d.
Abadea.	See New Seedling Daffodils, page 6.....	—	15	0	0
Alpine Snow.	See New Seedling Daffodils, page 6.....	—	10	6	6
§ Amabilis (3), xx, silvery white, long cup, sometimes tinged apricot, ht. 13 in.	per 100, 17/6	2	6	0	3
† Amazon (4), xxx, flower of good form, often two on a stem, perianth white, cup canary, foliage blue-green; good for pots and valuable for cutting, ht. 20 in.	per 100, 25/-	3	6	0	4
§† Ariadne (3), xxx, a flower of refined beauty; perianth white, cup ivory-white, large and saucer-shaped, prettily frilled at margin, lasting long in bloom, a lovely bedder, ht. 16 in. AWARDS OF MERIT at Birmingham, Truro, Plymouth, and R.H.S., London, 1904.....	per 100, 35/-	5	0	0	6
§† Bridesmaid (3), xxx, perianth pure white and campanulate, cup white, slightly margined pale primrose, of globular form and prettily crinkled at brim, very beautiful, ht. 20 in.; a fine variety for pots, borders, or cutting, and will bear gentle forcing. AWARD OF MERIT, R.H.S., 1903	per 100, 25/-	3	6	0	4
Chamois (4), xxx, new 1913, an elegant and beautiful flower, perianth pure white, long, spreading and elegantly twisted, crown open and fluted, shaded salmon on a white ground with a pale green centre, ht. 15 in.....		10	6	1	0
Corallina (4), xxx, flower smallish, but very beautiful, perianth white and campanulate, crown straight, prettily fluted, colour pale brick-rose deepening at margin to delicate orange-apricot. AWARD OF MERIT, BIRMINGHAM		60	0	5	6
† Czarina (4), xxx, one of the largest of the Giant Leedsii, flower of immense size, measuring 5 inches across, broad white perianth elegantly twisted, large delicate citron crown 1½ inches long with bold open mouth, very handsome; robust grower, ht. 18 in.....		36	0	3	6
§† Duchess of Westminster (4), xx, a finely formed flower, with pure white tapering perianth and long soft canary cup, tinged orange on first expanding, and passing off almost white, foliage glaucous blue-green; a good border variety and charming when naturalised in grass, ht. 18 in. FIRST-CLASS CERTIFICATE R.H.S.	per 100, 32/6	4	6	0	5
§† Elaine , xxx, perianth broad and silvery white, cup silvery white, small, globular and elegantly fluted, beautiful, ht. 17 in. FIRST-CLASS CERTIFICATE R.H.S., 1901		10	6	1	0
† Empire (3), xxx, new 1911, one of the finest of the Giant Leedsii class, and a very noble and beautiful flower of highest type; perianth white, very large, broad, and imbricated, crown very large, lemon shading to white, slightly expanded at mouth, and exquisitely frilled, foliage broad and blue-grey, ht. 16 in. AWARDED FIRST-CLASS CERTIFICATE, BIRMINGHAM, 1907		—	15	0	0
§† Evangeline (4), xxx, flower of fine form with broad white perianth smooth and firm, large citron-yellow open cup, free bloomer and fine for cutting, ht. 20 in. AWARD OF MERIT R.H.S., 1913. AWARD OF MERIT FOR CUTTING, BIRMINGHAM, 1914	per 100 32/6	4	6	0	5
§† Fairy Queen (2), xxx, perianth pure white, straight creamy-white cup, prettily fluted, an exquisite flower of chaste beauty; for bedding it is of great value, the flowers standing out well above the handsome blue-green foliage, while it always makes a charming pot plant, and is prized for cutting, ht. 19 in.....	per 100, 35/-	5	0	0	6
† Feronia (4), xxx, new 1919, flower of beautiful form measuring 4½ inches across, perianth white with sulphur tinge at margin, erect and broad, crown cream, shaded pale lemon at margin, ht. 18 in.		—	7	6	6

Narcissus Leedsii—continued.

	per doz.	each.
	s. d.	s. d.
† Icepeak (5), xxx, new 1911, a very dainty and beautiful flower of perfect symmetry, having a broad, smooth, snowy white perianth, and a small cream globular cup with green centre, ht. 21 in.....	10 6	1 0
Ivorie. See New Seedling Daffodils, page 7.....	—	7 6
§† Janet Image (3), xx, raised at our Nurseries, a refined flower, with white perianth and large straight lemon crown, ht. 16 in. AWARD OF MERIT R.H.S., Truro, and Birmingham, 1903.....	7 6	0 8
Kingdom. See New Seedling Daffodils, page 7.....each £2 2s.	—	—
† Lemon Frill (6), xxx, new 1919, perianth solid white, cup pale lemon shaded cream, prettily frilled; a beautiful cool looking flower, ht. 21 in.....	—	10 6
Loch Fyne. See New Seedling Daffodils, page 7.....	—	15 0
† Lord Kitchener (3), xxx, a very handsome Giant Leedsii, flower of great size with very broad flat pure white perianth of firm substance, crown very large of a delicate pale primrose, well open at mouth and elegantly crimped at brim, ht. 18 in. AWARD OF MERIT R.H.S., 1905.....	25 0	2 3
† Lucia (4), xxx, similar to Katherine Spurrell , but finer, flower measuring 4 inches across, perianth white, cup citron, prettily fluted, very chaste, ht. 18 in....per 100, 27/6	3 9	0 4
§† Maid of Athens (4), xxx, a very graceful flower, measuring 3 inches across, perianth white, well imbricated and slightly scalloped, cup globular, sulphur-white with a pretty buff-yellow margin, foliage blue-green; fine for cutting, ht. 18 in.; valuable for pots and gentle forcing.....per 100, 27/6	3 9	0 4
† Mermaid (2), xxx, a great improvement on <i>White Queen</i> , flower erect, large and beautiful, with handsome blue-green foliage; perianth white, large and well imbricated, crown very large and bold, elegantly flanged at mouth, opening pale creamy-primrose and passing off almost white, ht. 20 in.; a fine exhibition variety. See Illustration, and coloured plate in "The Garden," August 19th, 1911.....	21 0	2 0
§ Mountain Maid (3), xxx, flower snowy white, drooping like a snowdrop, the perianth overhanging the cup; a very graceful variety for planting on banks and slopes, ht. 13 in....	7 6	0 8
§† Mrs. Langtry (4), xx, perianth white and broad, cup opening pale primrose and passing off white, sometimes margined canary-yellow, beautiful; a very free bloomer, each bulb generally producing several flower stems, ht. 18 in.; a fine border variety or to naturalise per 1000, 150/-; per 100, 16/6	2 4	0 3
† Music (6), xxx, new 1915, a distinct and charming flower measuring nearly 4 inches across, with white perianth, and a broad open short cup, pure white shading down to ivory and green at centre, ht. 19 in.....	36 0	3 6
Myra (3), xxx, new 1919, large bold flower, perianth white, crown soft lemon, beautiful, ht. 19 in.....	60 0	5 6
Prince Arthur. See New Seedling Daffodils, page 8.....each £2 2s.	—	—
† Queen of the North (3), xxx, flower large and of highest quality with very broad white perianth, cup lemon, prettily fluted; a nice cool-looking flower, valuable for cutting, strong free grower, ht. 18 in.....	7 6	0 8
§† Royal Lady (6), xxx, perianth pure white and well imbricated, cup soft pale lemon prettily serrated at margin, a tall strong grower, effective border variety per 100, 35/-	5 0	0 6
§ Salarino , xx½, new 1919, flower large, perianth white and campanulate, crown of a pleasing lemon shade, long and straight, deeply fluted, ht. 18 in.....	—	5 6
† Salmonetta (4), xx, perianth white, cup prettily fluted and of a beautiful apricot shade passing off peach, a distinct and charming colour; free bloomer and prized for cutting, ht. 16 in. AWARD OF MERIT, BIRMINGHAM, 1903.....per 100, 21/-	3 0	0 4
† Sirdar (3), xxx, a grand flower with broad imbricated silvery white perianth and large bold straight crown of a delicate cream colour, deeply fluted and elegantly frilled at mouth, ht. 19 in. It may bear gentle forcing in pots.....	25 0	2 3



LEEDSII MERMAID.

Narcissus Leedsii—*continued*.

	per doz.	each.		
	s.	d.	s.	d.
† Sir Galahad (4), xxx, a charming flower measuring over 4 inches across, perianth pure white, rounded, broad and imbricated, crown soft lemon-primrose, large, open and spreading, deeply flanged and frilled at mouth, ht. 15 in. <i>See Coloured Plate in "The Garden," July 30th, 1910.</i>	21	0	2	0
† St. Olaf (3), xxx, <i>new</i> 1913, a flower of remarkable beauty, measuring 3 $\frac{3}{4}$ inches across, with very broad rounded white perianth, well imbricated, and a wide flattened crown, prettily fluted, measuring 1 $\frac{1}{4}$ inches across, colour cream delicately margined sulphur and with sulphur-shaded centre, ht. 20 in. AWARD OF MERIT R.H.S., April 15th, 1913. <i>Illustrated in "The Garden," April 26th, 1913, and the "Gardeners' Chronicle," May 17th, 1913.</i> This Daffodil likes a fairly moist soil.....	30	0	2	9
† Southern Gem , xxx, a fine Giant Leedsii, with white perianth, and large lemon-coloured crown, a nice cool-looking flower. AWARD OF MERIT FOR GARDEN AND CUTTING, R.H.S., 1914.....	18	6	1	9
† Sweet Dorothy (3), xxx, a Giant Leedsii with broad white imbricated perianth and creamy bold elegant crown frilled at margin, ht. 18 in.....	—	5	6	
§ The Dove (2), xx, a graceful flower with white perianth and globular cream-coloured cup passing off white, ht. 18 in.; a charming variety for grass...per 100, 25/-	3	6	0	4
§ Una (4), xxx, flower large with long creamy-white perianth, and long straight crown, of a bright citron tinged apricot; a vigorous grower and free bloomer, valuable for cutting, ht. 18 in.....	5	6	0	6
§† Undine (4), xxx, a very graceful nodding flower, snowy white campanulate perianth, crown creamy-white, straight and deeply fluted, foliage pretty blue-green, ht. 13 in....	5	6	0	6
† Venus (3), xxx, a very beautiful chaste flower of refined form, perianth white, broad and solid, crown large, delicate pale lemon passing to white, ht. 14 in. AWARD OF MERIT, TRURO, 1913.....	21	0	2	0
Viscountess Falmouth (1), xx, an elegant flower with pure white perianth and a long straight elegant crown, ht. 17 in.per 100, 25/-	3	6	0	4
§ Waterwitch (3), xx, a very graceful pendulous pure white flower, with globular cup; especially valuable for naturalising on grassy slopes, where the flowers are seen to advantage, ht. 17 in.....	8	6	0	9
§† White Lady (4), xxx, a charming flower of medium size but perfect form, with broad white perianth and dainty pale canary crinkled cup; delicately scented; it may be gently forced, is a free bloomer, and valuable for cutting, ht. 23 in. AWARD OF MERIT R.H.S., 1898.....per 100, 25/-	3	6	0	4
White Pearl. <i>See New Seedling Daffodils, page 8.</i>each £1 15s.	—	—	—	—
† White Queen (3), xx $\frac{1}{2}$, a refined flower, perianth broad, pure white, cup pale citron, passing to white, and frilled at margin; ht. 17 in. AWARDED FIRST-CLASS CERTIFICATE R.H.S., 1898.....	8	6	0	9
§† White Slave (3), xxx, a handsome well-balanced flower, measuring 3 $\frac{1}{2}$ inches across, perianth snowy white, broad and imbricated, cup spreading, pale citron shaded white, elegantly fluted and frilled, erect grower and free bloomer, ht. 18 in....	10	6	1	0



TRIANDRUS ALBUS ON ROCKWORK.

DIVISION V.—TRIANDRUS AND TRIANDRUS HYBRIDS.

Under this division are placed Triandrus varieties and all hybrids obviously containing Triandrus blood.

The introduction of Triandrus blood in hybridising has resulted in such a very distinct group of hybrids that the Classification Committee of the R.H.S. deemed it advisable to make one section of them. For grace and beauty they are unsurpassed. We recommend them being given a situation partly shaded by trees, and if a little very fine dwarf grass seed is sown amongst them the beauty of their flowers is enhanced. Once planted they may remain undisturbed for years.

NARCISSUS TRIANDRUS.

The Cyclamen-flowered Daffodils with reflexing perianth.

THE DAINY LITTLE "ANGEL'S TEARS" DAFFODIL (*Triandrus albus*) was found by the late Mr. Peter Barr on the mountains of Portugal and Spain, growing in very hard, firm, fine gritty soil sometimes in the narrowest fissures of granite and slatestone rocks. All in this section make lovely little pot plants (three or more bulbs in a pot), and grown thus should be given cold frame culture. Established on rockwork they form a picture full of grace and beauty. *They prefer shade, a gritty soil, and a well-drained position.*

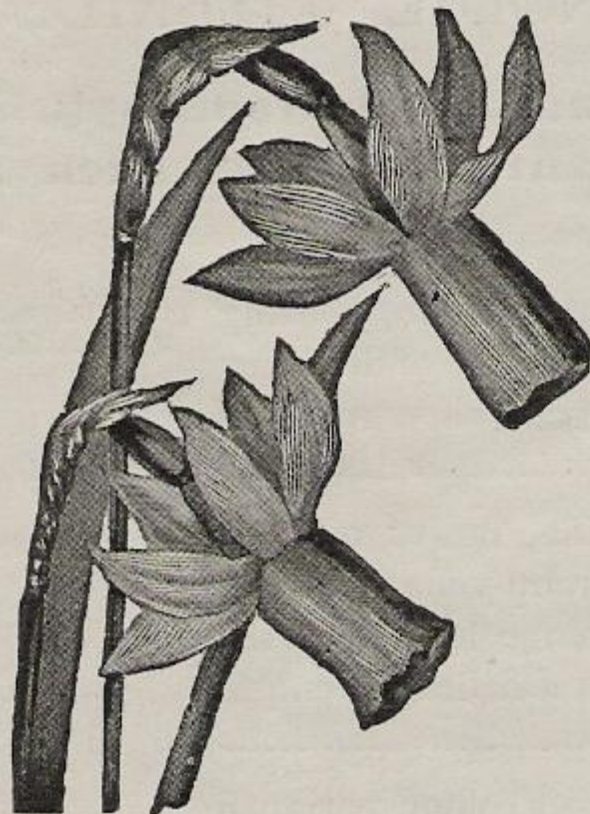
† **Triandrus albus** (3), an exquisitely beautiful little species, appropriately called the "Angel's Tears" Daffodil; it is of slender growth, and produces a cluster of elegant little creamy-white flowers with globular cup and perianth reflexing as in the Cyclamen, ht. 7 in. *As these collected bulbs have to be taken up while the foliage is still green, a few may possibly not bloom the first season. The bulbs should therefore be left undisturbed to establish themselves.*.....per 100, 12/6

„ „ „ „ Larger sized bulbs, „ 21/- 3 0 0 4

† **Triandrus calathinus** (3). One of the most beautiful little Daffodils in existence. The flowers, which are produced in drooping clusters of two or three, are snowy white, and more than twice the size of *Triandrus albus*, with long goblet-shaped crown prettily fluted; the foliage has a curious habit of curling over, ht. 7 in. For pot culture and rockwork it is a perfect gem. The late Mr. Peter Barr collected this rare Daffodil some years ago on the Isle of Glénan, Brittany, the collecting being attended with a good deal of risk. Unfortunately it is no longer to be found there, the sea having washed away all trace of it, but we have been able to continue raising stock from seed. AWARD OF MERIT R.H.S., March 3rd, 1920..... 12 6 1 3

NARCISSUS TRIANDRUS HYBRIDS.

Of these QUEEN OF SPAIN is a natural hybrid of *Triandrus albus* and a wild trumpet Daffodil. The other varieties have all been produced by using *Triandrus albus* or *calathinus* pollen on trumpet and other Daffodils. They form a distinct class, having flowers more or less drooping, of elegant form and graceful habit, clearly showing their *Triandrus* parentage.



NARCISSUS QUEEN OF SPAIN.

§† **Queen of Spain** (3), xxx, a wild hybrid discovered by the late Mr. Peter Barr in Spain. One of the most beautiful, distinct, and graceful Daffodils in cultivation, and recommended either for bedding, pot or vase culture, or for naturalising in woodlands, etc. The flowers vary slightly in size, but all are of a uniform soft, delicate, clear yellow, with a gracefully reflexing perianth, trumpet of distinct and elegant form, ht. 12 in. Naturalised in grass under trees this Daffodil forms a delightful feature in the garden. It also adapts itself readily to bowl culture in the Peat-fibre mixture, and grown thus affords an artistic decoration for the sitting-room. Owing to the bulbs having to be collected while the foliage is still green, some may not bloom the first year, but we expect a good proportion to do so.

Collected bulbs, per 100, 21/- 3 0 0 4

„ „ Extra strong collected bulbs, „ 30/- 4 0 0 5

„ „ A few home-grown bulbs, „ 42/- 5 6 0 6

§† **Agnes Harvey** (4), xxx, a beautiful chalice-cupped hybrid, perianth snow-white, cup pure white sometimes flushed soft apricot, one to three blooms on a stem, slightly drooping, ht. 13 in. AWARD OF MERIT R.H.S., 1902..... 5 6 0 6

§† **Alope** (4), xxx, new 1919, flower large with primrose-yellow perianth and bold canary-coloured trumpet, ht. 13 in..... — 7 6

§† **Cingalee** (4), xxx, large flower measuring 4½ inches across, with long starry cream-coloured perianth and elegant goblet-shaped crown of a delicate soft primrose..... — 4 6

† **Madonna**, xxxxx, new 1912, a remarkably beautiful chalice-cupped hybrid, solid white with large open fluted crown and slightly reflexed perianth, very chaste..... — 12 6

Pearl of Dew. See New Seedling Daffodils, page 8.....each £1 10s. — —

Primrose Gem. See New Seedling Daffodils, page 8.....each £2 2s. — —

MIXED TRIANDRUS HYBRIDS (Trumpet Daffodils × *Triandrus calathinus*), all very beautiful..... 7 6 0 8

DIVISION VI.—CYCLAMINEUS & CYCLAMINEUS HYBRIDS.

Seeing that **Cyclamineus** blood, like that of **Triandrus**, imparts such a distinct form to Daffodils, a separate division has been made for its hybrids. It has been used by many hybridisers as a parent, but very often the progeny has not been long-lived. Some hybrids, however, have now been raised with a good constitution such as **Orange Glory**, see page 8.

Cyclamineus (1), the Yellow Cyclamen-flowered Daffodil.



NARCISSUS CYCLAMINEUS ESTABLISHED ON ROCKWORK.

This beautiful little Daffodil was re-introduced into cultivation in 1887 by A. W. Tait, Esq., of Oporto, after being lost sight of for 200 to 300 years. It is the earliest of all Daffodils and is a charming elegant little flower of very distinct form; the trumpet is rich yellow, straight and tube-like, elegantly serrated at mouth, while the perianth is reflexed as in a Cyclamen. A valuable little species for pot-culture, edgings, rockwork, and to naturalise in grass and shady nooks, or at the water's edge; it delights in a dampish sandy peat soil, ht. 6 in., FIRST-CLASS CERTIFICATE R.H.S.....per 100, 21/-

	per doz.	each.
	s. d.	s. d.
Extra strong bulbs	4 6 0	5
§† Golden Arrow. See New Seedling Daffodils , page 7.....	—	15 0
§† Orange Glory , a remarkably striking Cyclamineus hybrid. See New Seedling Daffodils , page 8.....	—	—

DIVISION VII.—JONQUILLA AND JONQUIL HYBRIDS.

Under this division are placed the **Single Jonquil** and all **Daffodil hybrids** where the characteristics of the **Jonquil** parent dominate, such as **Odorus**, etc.

† **Jonquilla** (The **Single Sweet Jonquil**) (5), xxx, of light elegant growth, bearing out of doors in May charming clusters of numerous small rich yellow flowers of delicious scent, much prized for cutting, ht. 13 in. It produces a pleasing effect when grown in pots or bowls for indoor decoration.....per 100, 14/6

† **Buttercup** (4), xxxxx, a cross between *Emperor* and *Jonquilla*, flower of very distinct handsome form, borne on a long stem; colour rich buttercup-yellow, almost a self, with broad stiff perianth very slightly reflexing and of same length as the trumpet, which is straight and of great substance; the flower has a delicate Jonquil perfume, ht. 21 in. AWARD OF MERIT R.H.S., 1908.....

Sweet Nancy, xxx, new 1919, flower 3 inches across, of a nice soft colour, perianth soft yellow, broad and imbricated, crown short, bright yellow, deeply flanged, fragrant, ht. 22 in.....

§† **Odorus Campanelle** (**Campanelle Jonquil**) (2), xx, native of France, having an elegant rush-like foliage and clusters of bright yellow fragrant flowers, ht. 18 in.; valuable for border decoration and early forcing in pots.....per 100, 15/-

For the **Double Jonquil** and **Double Campanelle Jonquil**, see page 28.

§† **Odorus rugulosus**, true (2), xx, bearing rich yellow fragrant flowers (two to four on a stem) with broad imbricated perianth and straight wrinkled cup, foliage erect and rush-like, a fine showy variety, very effective when massed in beds and borders, and valuable for cutting, ht. 18 in.....per 100, 12/6

Barr's New Peat-fibre, Shell and Charcoal Mixture.

The best medium for growing bulbs in Vases, Bowls, Jardinets, etc., 5/6 per bushel; 1/6 per peck. For Full Cultural Directions, see page 2. For suitable Bowls, see page 35.

DIVISION VIII.—TAZETTA & TAZETTA HYBRIDS.

Under this Division are placed the Polyanthus or Bunch-flowered Narcissi, Poetaz Narcissi, Tridymus, and various Tazetta Hybrids.

POLYANTHUS OR BUNCH-FLOWERED NARCISSI.

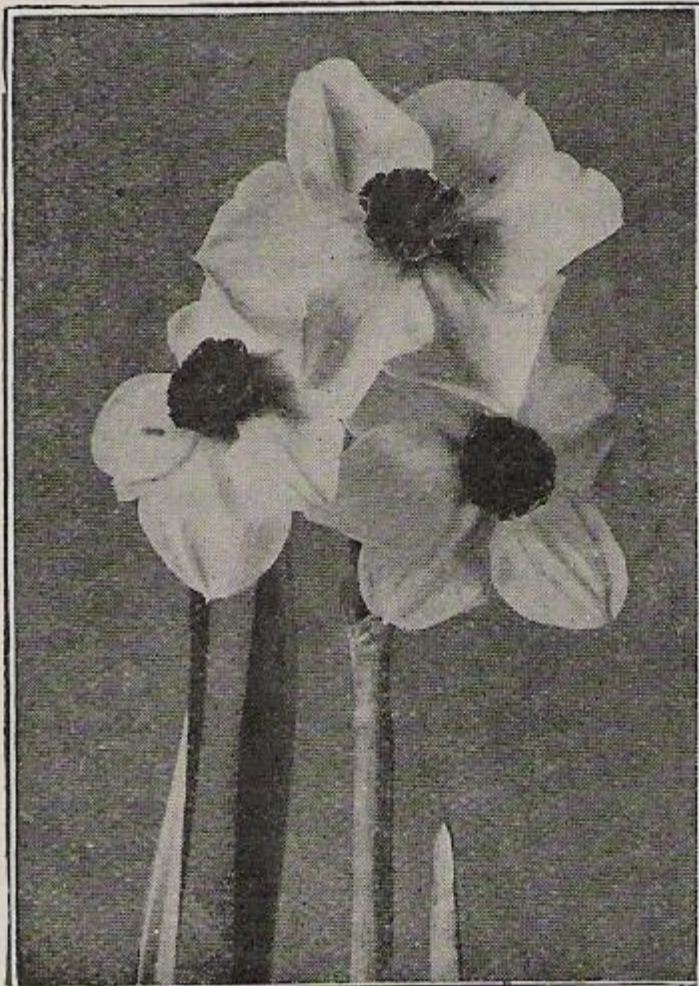
When grown outdoors in beds or borders, a little protection should be given during winter by means of a light covering of straw litter or cut heather.

All extra strong bulbs suitable for forcing.

	per doz.	each.
	s. d.	s. d.
Gloriosus , perianth white, cup glowing orange, very showy and early, largely used for early forcing.....per 100, 27/6	3 9	0 4
Grand Monarque , large broad white perianth, cup primrose-yellow...per 100, 27/6	3 9	0 4
Grand Soleil d'Or , perianth golden, cup deep brilliant orange, <i>early</i> and very showy, producing a very bright effect in the gardenper 100, 27/6	3 9	0 4
Paper White "Snowflake" Improved , a large-flowering variety of the Early Paper White Narcissus, bearing elegant trusses of snowy white fragrant flowers; <i>most valuable for early forcing</i>per 100, 32/6	4 6	0 5
"Scilly Isles" White , perianth white, cup creamy-white; this variety may be forced into bloom by February.....per 100, 27/6	3 9	0 4
White Pearl , bearing trusses of large flowers with white perianth and pure citron cup which passes to white. Excellent for early forcing.....per 100, 30/-	4 0	0 5

NARCISSUS POETAZ—NEW HYBRID POLYANTHUS NARCISSI.

New hybrids of *Poeticus Ornatus* × Best Forms of Polyanthus Narcissi.



POETAZ ELVIRA.

A fine race of Daffodils, resulting from a cross between *Poeticus ornatus* and the finest varieties of *Polyanthus* or *Bunch-flowered Narcissi*, the *Poeticus* being the seed-bearing parent. The plants are tall and vigorous growers, bearing heads of large well-formed flowers, deliciously fragrant; they are much finer than the old *Polyanthus Narcissi*, and have the advantage of being much hardier. In pots or the flower border they are very decorative, while the flowers are highly prized for cutting. They can easily be brought into bloom early by gentle forcing.

† Admiration , a very handsome showy variety, bearing several flowers on a stem, perianth light yellow, cup heavily margined scarlet.....	per doz.	each.
	s. d.	s. d.
	7 6	0 8
† Aspasia (3), xxx, producing four to five large bold flowers on a stem, with broad solid white perianth and golden cup, very prettily fluted, ht. 21 in.....per 100, 25/-	3 6	0 4
† Bouquet Enorme , xxx, <i>new</i> , a giant variety, producing on very stout stems heads of large flowers with broad white perianth and yellow cup.....	7 6	0 8
† Elvira (3), xxx, bearing on long, graceful stems heads of 3 to 4 large flowers with broad solid white petals of great substance and a bright yellow cup edged orange, delicately fragrant, ht. 24 in. AWARD OF MERIT R.H.S.....per 100, 25/-	3 6	0 4
† Helios , xxx, bearing a fine head of flowers, perianth creamy-yellow, cup bright yellow, a good forcer. AWARD OF MERIT, HAARLEM, 1917.....per 100, 25/-	3 6	0 4
† Jaune à Merveille (4), xxx, a handsome variety, four to six flowers on a stem, with large broad soft primrose perianth and bright yellow cup, thinly edged orange, of good form, ht. 21 in.....per 100, 35/-	5 0	0 6
† Klondyke (4), xxx, a fine showy variety with primrose-yellow perianth and golden fluted cup, five to seven large flowers on a stem.....per 100, 35/-	5 0	0 6
† Lucrece , xxx, very attractive, flowers large with pure white perianth and rich orange cup.....	7 6	0 8

Narcissus Poetaz—*continued.*

	per doz.	each.
	s. d.	s. d.
† Orange Cup , xxx, bearing a cluster of showy flowers, perianth primrose-yellow, cup brilliant orange, prettily frilled.....per 100, 42/-	5 6	0 6
† Orange Prince (4), xxxx, <i>new</i> , flowers large, perianth yellow, cup rich dark orange, showy and handsome.....	—	2 6
† Rembrandt , xxx, flowers large, perianth pure white, cup golden-yellow margined orange, attractive.....per 100, 27/6	3 9	0 4
† Sycamore , xxx, a beautiful variety, the flowers having a pure white perianth and a deep golden-yellow cup. AWARD OF MERIT, HAARLEM, 1919.....per 100, 27/6	3 9	0 4
† Triumph (3), xxx, bearing about three very large flowers on a stem, perianth broad and snowy white, cup golden-yellow prettily fluted, ht. 16 in.....per 100, 35/-	5 0	0 6

VARIOUS TAZETTA HYBRIDS.

§ TRIDYMUS CLOTH OF GOLD (3), xx, a very striking decorative bedding variety lasting long in condition, each stem bearing three to five sweetly scented flowers of the richest golden-yellow; robust grower and free bloomer, valuable as a cut flower, ht. 14 in.	8 6	0 9
CANALICULATUS , a dainty little species only suitable for sunny situations on rock-work; it has narrow erect bluish-green foliage and bears heads of three to four flowers with white reflexing perianth and globular golden cup, sweetly scented, ht. 6 in.per 100, 25/-	3 6	0 4
GLANDORE (Tazetta) (4), xxx, a charming Tazetta Narcissus bearing five to seven sweet-scented flowers on a stem, perianth white, broad and rounded, cup soft primrose, ht. 12 in.	—	3 6
§ INTERMEDIUS "SUNSET" (3), xxx, canary-yellow perianth and large glowing orange-red cup, four to five flowers on a stem, remarkably showy, ht. 16 in. AWARD OF MERIT R.H.S.per 100, 32/6	4 6	0 5

DIVISION IX.—POETICUS.—True Poet's Narcissi.

These "POET'S DAFFODILS" or NARCISSI all have snowy white perianth segments or petals, and a small flattened eye or crown, yellow or lemon edged more or less deeply with scarlet or crimson, and sometimes almost all scarlet. All are sweetly scented.

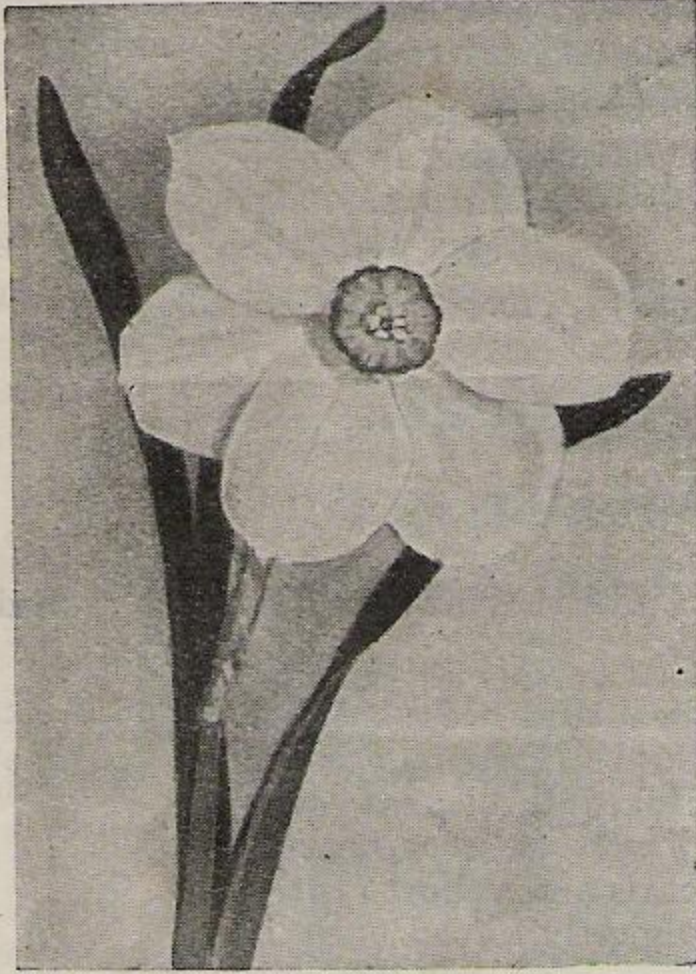
The earlier flowering varieties afford a very beautiful decoration indoors when grown in pots (5 bulbs in a pot) or forced. As border plants and naturalised in grass by themselves the Poet's Narcissi produce a lovely effect.

☞ Early planting and liberal culture is specially recommended for these Poet's Daffodils. To obtain tall stems and fine large flowers they should be grown in a rich deep soil not too dry. The varieties having very highly coloured crowns should be cut young to preserve the fine colouring.

	per doz.	each.
	s. d.	s. d.
§† Caedmon (4), xxxx, a most striking and beautiful large flower with broad snowy white perianth of great substance, and a very bold centre broadly rimmed dark red and having a rich green eye, ht. 17 in. A splendid Exhibition variety. AWARDED FIRST-CLASS CERTIFICATE R.H.S., April 21st, 1915, as a show flower, also an AWARD OF MERIT MIDLAND DAFFODIL SOCIETY, 1915, and FIRST-CLASS CERTIFICATE NORTH OF ENGLAND HORTICULTURAL SOCIETY, 1915.....	—	7 6
§† Cæsar (6), xxxx, a remarkably fine flower of perfect form, measuring slightly over 3 inches across, with very broad rounded solid white perianth, the petals all of equal size and well imbricated; large lemon-yellow eye edged dark madder-red; flowers erect and borne on long stout stems, ht. 16 in.....	48 0	4 6
§† Cassandra (5), xxx, a flower of fine form and substance, with broad clear white perianth and a small eye deeply rimmed dark red, ht. 17 in. A fine border variety and valuable for early forcing. AWARD OF MERIT R.H.S., 1899.....per 100, 35/-	5 0	0 6
§† Comus (5), xxx, a large handsome flower with a broad white perianth and a canary-coloured eye heavily rimmed deep scarlet, ht. 20 in.....	8 6	0 9
§† Edna (4), xxx, a bright attractive variety with rounded flower of fine form, having a broad white perianth and bright yellow eye margined deep glowing scarlet, ht. 18 in.per 100, 35/-	5 0	0 6
§† Epic (6), xxx, large flower measuring 3 inches across, with broad snow-white perianth, eye canary, with picotee-edge of madder-crimson, handsome, ht. 20 in. AWARD OF MERIT, BIRMINGHAM.....	8 6	0 9

Narcissus Poeticus—continued.

§† **Ethelburga** (6), xxx, a large and beautiful flower measuring 3¼ inches across, per doz. each. with very broad snowy-white perianth, well imbricated, and a lemon-yellow eye toning s. d. s. d. down to green, with a deep margin of dark madder-red, ht. 18 in.....per 100, 35/- 5 0 0 6



POETICUS HERRICK.

§† **Glory of Lisse** (5), a fine large flower with snow-white well-imbricated perianth, and a bright red-margined eye, ht. 16 in...per 100, 25/- 3 6 0 4

§† **Herrick** (5), xxx, flower of good substance and fine bearing, with slightly reflexing snowy white perianth and large flat eye deeply rimmed dark scarlet, free grower, fine for cutting, ht. 17 in. Good early forcer. AWARD OF MERIT R.H.S., 1901per 100, 42/- 5 6 0 6

§† **Horace** (4), xxx, having a snowy white rounded perianth, and large eye almost entirely blood-scarlet, very beautiful, ht. 21 in. It can be brought into bloom early by gentle forcing. AWARD OF MERIT FOR GARDEN AND CUTTING, R.H.S., 1914.....per 100, 75/- 10 6 1 0

§† **Ibis** (5), xxx, perianth snowy white, broad and solid, slightly reflexing, eye deeply edged blood-scarlet, ht. 20 in. ; a good forcer..... 16 0 1 6

§† **Juliet** (4), xxx, flower large and of fine form, perianth very white, eye large, orange-yellow with crimson-scarlet rim, ht. 21 in..... 8 6 0 9

Kestrel. See *New Seedling Daffodils*, page 7 — 5 6

§† **Minerva** (6), xxx, a cool-looking flower, very distinct and shapely, with round symmetrical solid white perianth slightly reflexing, and a large round pale chrome-coloured eye rimmed cinnabar-red, plant of fine bearing, ht. 20 in.....per 100, 25/- 3 6 0 4

Nightingale. See *New Seedling Daffodils*, page 7.....each £1 1s. — —

§ **Old Pheasant's Eye** (*Poeticus recurvus*) (6), xx, perianth pure white and reflexing, eye margined deep orange-red, very fragrant, ht. 15 in. ; a valuable variety for massing in woods, grass, etc.....*Extra strong bulbs*, per 1000, 80/- ; per 100, 8/6 1 3 —

„ „ „ *Good selected bulbs for naturalisation* „ 65/- ; „ 7/- 1 0 —

§ **Ornatus** (4), xx, *native of France*, a favourite variety, perianth pure white, eye margined with scarlet, ht. 13 in. ; it forces freely and is also recommended for massing in grass, flower borders, etc.....per 1000, 90/- ; per 100, 9/6 1 4 —

„ „ „ *Extra strong bulbs*, per 100, 12/6 1 9 0 2

Raeburn. See *New Seedling Daffodils*, page 8..... — 15 0

† **Ringdove.** See *New Seedling Daffodils*, page 8.....each £3 3s. — —

§† **Snow King** (*syn. Christina Rossetti*) (6), xxx, flowers large, with smooth round perianth, very beautiful, ht. 18 in. AWARD OF MERIT and FIRST PRIZE IN POET'S CLASS, Birmingham, April 28th, 1910..... — 5 6

§† **Socrates** (5), xxxxx, the deepest edged Poeticus at the Birmingham Show, 1910, a very striking and noble flower, measuring over 3 inches across with very solid white broad perianth, well imbricated, centre canary with a remarkably deep margin of dark madder-scarlet, ht. 15 in. AWARD OF MERIT R.H.S. and BIRMINGHAM..... 36 0 3 6

§† **Timon** (6), xxxxx, a fine large flower of good substance, with very broad imbricated solid white smooth perianth, eye primrose shading to green and conspicuously margined dark cinnabar-red, sturdy grower, ht. 17 in..... 21 0 2 0

§† **White Standard** (5), xxx, a fine large flower measuring nearly 3½ inches across, with broad snowy white perianth and a bold striking eye conspicuously margined blood-scarlet, ht. 15 in..... 5 6 0 6

For the Double White Gardenia-flowered Poeticus, see page 29.

DIVISION X.—DOUBLE VARIETIES.

(A) DOUBLE TRUMPET DAFFODILS.

All the Double Trumpet Daffodils thrive admirably when planted in grassland and allowed to remain undisturbed. They are seen to great advantage when planted in clumps in permanent borders, and as pot plants they are very attractive (several bulbs in a pot).

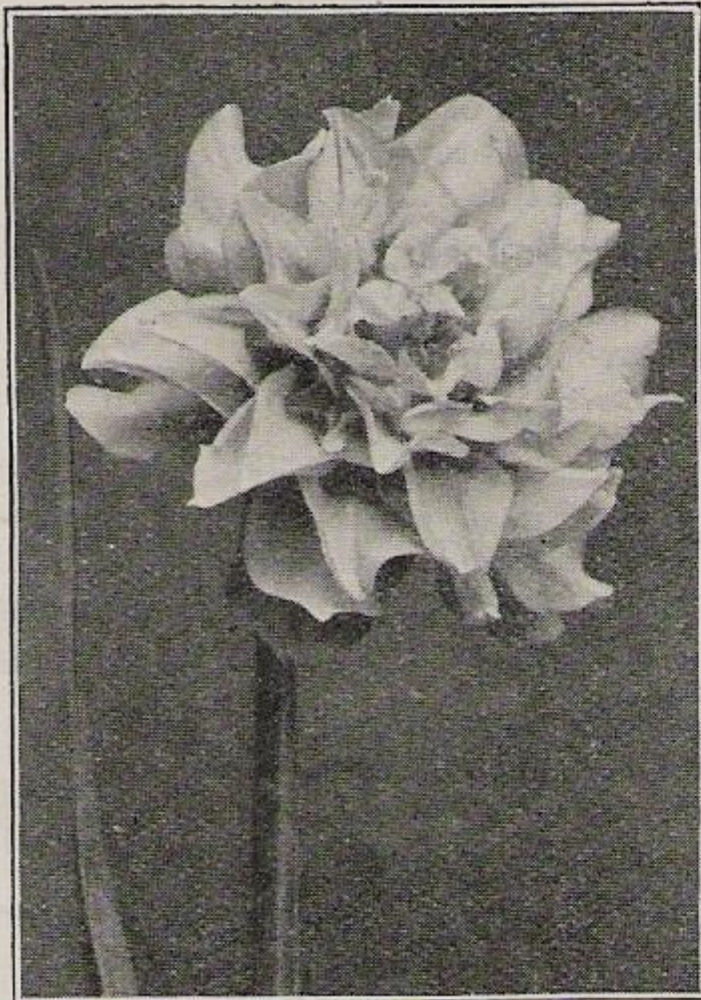
Double Trumpet Daffodils—continued.

* Cernuus Plenus (The Old Double White Trumpet Daffodil) (1), xxxx, native of England, flowers silvery white, of exquisite beauty, sometimes coming with a perfectly formed trumpet, but sometimes broken up into a rosette. For successful culture plant in shade in good virgin pasture-loam, avoiding manure, and leave it to become established, ht. 10 in. <i>This beautiful Daffodil has become very scarce.....</i>	per doz.	each.		
	s. d.	s. d.		
			—	10 6
§† Telamonius Plenus (Wilmer's Great Double Golden-yellow Daffodil) (2), xx, the large Old Double Yellow Trumpet Daffodil; valuable for naturalising in woodlands, etc., also for early forcing. <i>Good flowering bulbs for borders and naturalising,</i>	per 100, 21/-		3 0	—
„ „ <i>Extra strong bulbs for pot-culture and forcing, etc.</i>	„ 27/6		3 9	0 4

(B) DOUBLE INCOMPARABILIS NARCISSI.

The Double Rose-flowered Daffodils.

The large massive flowers of these are greatly prized for bouquets and vases, mixing well with other flowers and foliage in decoration. As pot plants (3 to 6 bulbs in a pot) they are very charming, while in beds, borders, or naturalised they make a most effective display.



DOUBLE NARCISSUS, CODLINS AND CREAM.

§† Argent (3), xxx, a beautiful cross between <i>Telamonius plenus</i> and <i>Poeticus ornatus</i> , bearing very beautiful and elegant star-shaped semi-double flowers of erect bearing with creamy-white petals and yellow centre, ht. 18 in. It may be gently forced early in pots.....	per doz.	each.		
	s. d.	s. d.		
			3 6	0 4
§† Butter and Eggs. See Golden Rose (an improved form of the old Butter and Eggs).				
§† Codlins and Cream (<i>syn.</i> Sulphur Phoenix) (3), xxx, large double white rose-shaped flowers with sulphur centre, very chaste and beautiful; much prized for bouquets, vases, etc., ht. 18 in...per 100, 25/-			3 6	0 4
§ Dubloon (3), xx, a hybrid of <i>Telamonius plenus</i> and <i>Poeticus ornatus</i> , bearing elegant bright yellow double flowers with darker centre, of fine erect habit, ht. 18 in.; a charming Daffodil for grass.....per 100, 42/-			5 6	0 6
† Eggs and Bacon (Orange Phoenix) (2), xx, large double rose-shaped flowers, white with rich reddish-orange centre, ht. 17 in. per 100, 25/-			3 6	0 4

§† Golden Rose (<i>syn.</i> Pallidus Plenus) (2), xxx, an improved form of the old Butter and Eggs Daffodil, flowers very large and round, rich light yellow with orange-golden centre, very double, handsome and showy, ht. 17 in.....per 100, 25/-			3 6	0 4
Milk and Honey. See New Seedling Daffodils , page 7.....each £1 1s.			—	—
§† Primrose Phoenix (4), xxxx, a valuable addition to this section of Double Daffodils; the large double rose-shaped flowers are of a beautiful soft lemon shade; much prized for vases, ht. 20 in. AWARD OF MERIT R.H.S., 1902.....			16 0	1 6
† Volcano , xxxx, the most brilliantly coloured of the Double Incomparabilis varieties, flowers measuring over 3 inches across, primrose-yellow with large brilliant orange centre shaded scarlet, very decorative, ht. 16 in.....			—	15 0

(C) DOUBLE SWEET-SCENTED JONQUILS.

§ Jonquilla flore-pleno (The Old Double Sweet Jonquil), producing in May little heads of rich yellow double flowers, very fragrant.....per 100, 15/-			2 3	0 3
* Odeus Campanelle plenus (The Tall Double Campanelle Jonquil) (3), xx, a very charming variety, bearing heads of fragrant double yellow flowers of elegant form, on tall graceful stems, ht. 15 in. It makes an attractive pot and border plant, and will bear gentle forcing.....per 100, 21/-			3 0	0 4

BARR'S PHYTOBROMA.

The best and safest manure for Daffodils, Hyacinths, Tulips and all spring-flowering bulbs—2-lb. carton, 1/4; 7 lbs. 3/6; 14 lbs. 6/6; 28 lbs. 11/6; 56 lbs. 22/-; 1 cwt. 42/-.

(D) DOUBLE POETICUS NARCISSUS.

The Gardenia-flowered Sweet-scented Narcissus.

§ Double White Poeticus (6), xxx, large double snowy white <i>sweet-scented</i> Gardenia-like blossoms, much prized for cutting, ht. 15 in. To obtain fine handsome flowers this Narcissus should be planted early in a good deep cool soil not too dry.....	per doz.	each.		
	s. d.	s. d.		
.....per 1000, 90/-; per 100, 9/6	1	4	0	2
„ „ <i>Extra fine selected strain</i> „ 150/-; „ 16/-	2	4	0	3

DIVISION XI.—VARIOUS SPECIES AND HYBRIDS.

Distinct forms which cannot be classed under any of the foregoing divisions.

NARCISSUS BULBOCODIUM (CORBULARIA).

The Hoop Petticoat, or Medusa's Trumpet Daffodils.

For rockwork, edgings and small beds, these beautiful little Daffodils are most charming, while if several bulbs are planted in pots or pans, they are greatly prized for indoor decoration.

Large Sulphur Hoop Petticoat (<i>Bulbocodium citrinus</i>) (3), xx, <i>native of the Pyrenees</i> , very beautiful pale citron-yellow, ht. 6 to 8 inches; delights in a dampish sandy peat soil. <i>The bulbs we offer having been collected while in growth will not all bloom the first season; they should therefore be planted where they may be left undisturbed to establish themselves.....</i>	per doz.	each.		
.....per 100, 9/-	1	4	—	
„ „ <i>Extra selected bulbs</i> „ 12/6	1	9	0	2



WHITE HOOP PETTICOAT.
(Half natural size.)

White Hoop Petticoat (<i>Bulbocodium monophyllum</i> or <i>Clusii</i>) (1), <i>native of N. Africa</i> , producing in winter little snowy white flowers of exquisite beauty; grow in pots, in frames, or at the foot of hot dry walls, and as soon as signs of growth are seen, give water freely; ht. 6 in. <i>The bulbs we offer having been collected while in growth, a few may fail to flower the first season. Those planted outdoors should therefore be allowed to remain where planted so as to become established.....</i>	per 100, 42/-	5	6	0	6
---	---------------	---	---	---	---

† Large Yellow Hoop Petticoat (true) (<i>Bulbocodium conspicuum</i>) (4), flowers rich golden-yellow, ht. 6 in.; prefers a dampish sandy peat soil. A fair proportion of the bulbs flower the first year. <i>Now very scarce</i>	10	6	1	0
---	----	---	---	---



EARLY YELLOW HOOP PETTICOAT
ON ROCKWORK.

Early - flowering Yellow Hoop Petticoat (2), <i>found in Spain by the late Mr. Peter Barr</i> , producing dainty rich golden-yellow flowers, blooming outdoors from February, ht. 6 in.; it delights in a dampish sandy peat soil.....	per 100, 12/6	1	9	0	2
„ „ <i>Extra selected bulbs</i> „ 17/6	2	6	0	3	

§ Gracilis (7), xx, a very beautiful little rush-leaved Daffodil, bearing 3 to 5 light yellow Jonquil-like <i>sweet-scented</i> flowers; the last of the family to bloom, opening about end of May, ht. 14 in.....	per 100, 42/-	5	6	0	6
---	---------------	---	---	---	---

Juncifolius (The Miniature Rush-leaved Daffodil) (4), xxx, a charming and elegant little species for pots or for select spots on rockwork; it has small graceful rich yellow flowers, about the size of a buttercup, with a perfectly flat little crown, ht. 3 to 4 in., flowers delicately fragrant, <i>a native of the Pyrenees</i>	7	6	0	8
--	---	---	---	---

Serotinus , a rare little Narcissus producing, in October, on slender stems, miniature star-shaped flowers with silvery-white perianth and a minute golden-yellow cup, sometimes two to three flowers on a stem, fragrant, ht. 10 in. Plant in a warm spot on rockwork and lightly cover during winter; or grow in pots in a cold frame....	4	6	0	5
--	---	---	---	---

§ Tenuior (the Slender Straw-coloured Daffodil or Silver Jonquil) (4), xx, a very elegant slender-growing Daffodil, having several flowers on a stem, perianth cream, cup sulphur-yellow, ht. 9 in.....	per 100, 18/6	2	8	0	3
--	---------------	---	---	---	---

NERINES.

THE MOST BEAUTIFUL OF AUTUMN FLOWERS FOR THE GREENHOUSE.

For autumn decoration in the greenhouse few plants can compare with Nerines for their brilliant and attractive colours, which form a pleasing contrast to the prevailing tints of this period of the year.



A HYBRID NERINE.

The flowers, which are produced in umbels of 6 to 24 blooms, are borne on stout stems varying in height from 1 to 2 feet. In colour they range from *dark red, vivid crimson, cerise, and scarlet* to *salmon, coral-rose, pink, blush, and white*, many having a glistening lustre which in sunlight gives them the appearance of being dusted with gold or silver. In some cases the flowers have a well-defined bar or stripe running up centre of petal which adds to their charm. They remain decorative for many weeks, and their beauty may be enjoyed in a sitting-room as well as the greenhouse, if the pots are kept in a sunny window.

The cut spikes, which last fresh a long time, are greatly appreciated for table decoration associated with some light graceful foliage like that of Maidenhair Fern.

The varieties we offer below are mostly New Seedlings, comprising new shades of colour and new forms; they are freer bloomers, and in some cases of taller growth, and with larger flowers than any of the older kinds.

CULTURE.—Nerines can be very easily grown by any one who has a glass structure from which frost can be excluded. *Plenty of air and sunshine* are their principal requirements. After the bulbs have finished flowering, place the pots on an airy sunny shelf close to the glass, and encourage a free foliage growth by giving occasionally a little weak liquid manure. In April or May, when the foliage commences to turn yellow, cease giving water and allow the bulbs to ripen off in their pots. As soon as the plants show signs of making fresh growth in August or early September, stand the pots in saucers of water for a few

hours to ensure the soil being uniformly moist, and then give water sparingly until the flower spikes are well advanced.

Nerines bloom most freely when well established in pots. Re-pot every third or fourth year. In potting, put in plenty of crocks to ensure good drainage, and use a compost of two-thirds good loam and one-third sand, with a sprinkling of well-decayed leaf soil or old manure and bonemeal.

Our Exhibits of New Hybrid Nerines have been awarded by the R.H.S. a Silver Gilt and three Silver Medals, 1914 to 1920.

	each—s.	d.
Ada Bryson, light salmon-red with pronounced scarlet stripe, narrow pointed petals, good truss.....	5	6
Afterglow, rich glowing rose, petals margined pink, large open flower, waved petals, fine truss	42	0
Aglaia, silvery white, slightly shaded pink.....	15	0
Aladdin, rose shaded mauve with crimson star, long narrow pointed petals, free-flowering	4	6
Albatross, white with delicate pink flush, nice truss.....	15	0
Alpha, light scarlet with a silvery-mauve sheen and scarlet stripe half way up sepals.....	4	6
Aphrodite, soft coral-scarlet with silver dusting and deeper coloured stripe down centre of the broad reflexed petals.....	10	6
Apricot, soft orange-scarlet, large broad-petalled well-formed open flowers, fine truss.....	21	0
Ariadne, blush-salmon with salmon-red stripe, large flower, good truss, extra fine.....	15	0
Ariel, light coral-salmon, with deeper stripe on petals, which are long and narrow.....	4	6
Armored, bright cherry, deeper coloured stripe, petals prettily waved.....	5	6
Aurora, coral-pink changing to mauve, waved petals, large flower and tall grower.....	5	6
Barcarolle, beautiful "old rose," with glistening silver sheen and deeper stripe up each petal, extra finely formed flower and truss.....	42	0
Beacon, soft shade of scarlet slightly paler towards centre, stamens salmon, fine truss.....	7	6
Beatrice, white shaded pink towards edge of petals.....	7	6
Bedouin, scarlet-cerise, large open flower with reflexed waved petals, tall grower.....	15	0
Berenice, bright pink, with rose stripe half way up petal, nice large open flower, good truss	7	6
Bianca, soft coral-scarlet, narrow petals.....	5	6
Blanche, blush-white with faint rose line down petal, petals tipped rose, compact truss.....	7	6
Blazing Star, glowing vermilion-scarlet, large open showy flowers.....	7	6
Boadicea, deep crimson-scarlet, dusted with gold, petals reflexed, fine compact truss	84	0
Bodyguard, glowing crimson shot with purple, large handsome truss.....	42	0

Nerines—continued.

each—s. d.

Bowdeni , a fine species from Cape Colony, producing large umbels of flowers 3 to 4 in. across, pink with a rose-coloured line down each petal. One of the hardiest, and may be grown outdoors in the South of England; very free flowering. AWARD OF MERIT R.H.S.....	3	6
Bowdeni pallida , a delicate shell-pink form, large truss.....	7	6
Bridesmaid , silvery blush-pink, petals slightly waved.....	5	6
Brilliant , glowing orange-scarlet with deeper scarlet stripe half way up petal.....	10	6
Buccaneer , pink shaded rose, large broad-petalled flower.....	15	0
Burgundy , orange-scarlet shot with mauve, large open flower, fine truss.....	7	6
Brocade , bright rose overlaid with mauve, stamens mauve, petals elegantly waved, a charming colour combination.....	7	6
Calliope , shell-pink with rose stripe, prettily waved and reflexed petals.....	10	6
Carmen , shell-pink with deeper pink stripe.....	5	6
Cassandra , rose shot with mauve with scarlet stripe, nice spike, tall grower.....	6	6
Celina , silvery blush-rose, large broad-petalled flower, tall grower, late flowering.....	21	0
Cerise , rich crimson with small white centre, medium truss.....	5	6
Chameleon , light purple shot with pink, overlaid with silver and gold.....	7	6
Charm , delicate shell-pink with rose stripe, petals waved, free bloomer.....	7	6
Claudius , rich crimson-scarlet, open spreading flower with waved petals, nice compact truss, tall grower.....	10	6
Comus , pink, lighter towards centre, with faint stripe, large broad-petalled flower.....	4	6
Constance , soft rose-pink with rose stripe, broad-petalled open flower.....	7	6
Coquette , flowers large and expanded, of a light salmon-red with broad scarlet band on petals, tall grower, handsome.....	21	0
Coral Queen , flowers a pretty soft coral-red with silver shading, petals elegantly waved...	7	6
Corallina , soft rose with silver sheen and deeper rose margin, large open flowers, waved petals.....	15	0
Cordelia , pink with deeper pink stripe and silvery margin, open flower, good truss, tall...	15	0
Cossack , rose-cerise, petals prettily waved and reflexed, free bloomer.....	5	6
Countess of Bathurst , blush-white with rose centre, very beautiful.....	15	0
Cræsus , beautiful rose-pink.....	5	6
Cynosure , soft pink with rose stripe, glistening satin lustre, handsome broad-petalled open flower.....	15	0
Dainty Maid , delicate silvery pink with dainty narrow waved petals.....	7	6
Dewdrop , silvery white tinged blush-rose, beautiful flower.....	21	0
Dresden , flowers salmon-red shaded mauve with silver dusting, very attractive.....	7	6
Dryade , flowers large and open, of a bright rose-pink with deeper stripe, petals slightly reflexed and waved, tall grower.....	5	6
Eastern Beauty , rose shot mauve, with scarlet stripe.....	7	6
Eleanor , soft pink, lighter towards the centre, narrow star-like petals.....	4	6
Elvira , beautiful soft clear pink, lighter towards centre, large flowers borne on stout trusses.....	15	0
Empress Queen , fine umbel of large open broad-petalled flowers, delicate old rose with silver sheen, centre rich rose radiating to central bar down each petal, very beautiful, tall grower.....	25	0
Epic , flowers open, with reflexed petals which are rather narrow and waved, colour bright rose-pink with deeper coloured stripe, tall grower.....	7	6
Esmeralda , white tinted pink with silver sheen with deeper pink stripe, flowers inclined to be trumpet shaped.....	5	6
Evangeline , beautiful blush-rose with soft rose-pink stripe and silvery sheen, broad-petalled well-formed flower.....	25	0
Felicity , soft salmon-red shot with mauve, large open flowers with waved petals.....	5	6
Firebrand , brilliant crimson-scarlet, deeper stripe half way up petals, large showy truss...	7	6
Firefly , orange-scarlet with brilliant scarlet stripe, broad stiff petals.....	15	0
Flambeau , fiery-scarlet, tall spike, fine open flower.....	10	6
Flexuosa , soft pink, petals much waved.....	4	6
Flexuosa alba , a beautiful species, bearing an umbel of about twelve snowy white flowers, with elegantly undulated and recurving petals. AWARD OF MERIT R.H.S.....	4	6
Florestan , glowing salmon-scarlet with salmon star, reflexed and pretty waved petals.....	10	6
Fothergilli , close umbels of well-formed flowers, deep salmon shaded scarlet.....	3	6
,, major , large umbels of handsome brilliant salmon-red flowers shaded scarlet...	4	6
Furnace , glowing orange-scarlet, prettily waved petals.....	7	6
Fusilier , orange-scarlet with deeper stripe down petal, long partially reflexed petals, large flower, good truss.....	7	6
Glow , salmon-red with scarlet glow and glowing scarlet star, open broad-petalled flowers, slightly waved, good truss.....	10	6
Her Majesty , crimson-red, darker towards centre, large fine open flower, extra fine.....	21	0
Humilis , blush-pink with narrow waved petals, small free-flowering pretty species.....	3	6
Ignatius , deep crimson-scarlet, open flower, narrow reflexed petals slightly waved, tall grower, compact truss.....	7	6
Ingens , beautiful coral-pink with rose stripe half way up petal, large truss.....	3	6
Innocence , silvery pink with pink stripe, flower trumpet shaped.....	3	6

Nerines—continued.

	each—s.	d.
Isolde, open umbel of beautiful flowers, delicate shell-pink with silver dusting and rose-coloured centre, petals broad and slightly waved.....	7	6
Izard, bright red with mauve flush, open flower, waved sepals	5	6
Jaspar, rose shot mauve, with scarlet stripe.....	7	6
Jupiter, glowing crimson, shot with mauve and overlaid with gold.....	10	6
Lady Bromley, large umbel of flowers, long narrow petals, pink with deeper red stripe.....	5	6
Lady Clementina Mitford, an exquisite shade of delicate shell-pink.....	15	0
Lady Dorrington, blush-white shaded pink, with rose stripe, large open flower, spreading truss	42	0
Lady Downe, coral-scarlet, large broad-petalled flower dusted with gold, waved petals, fine truss	63	0
Lady Foster, blush-white with faint rose stripe half way up petal, large open flower.....	21	0
Lady Lawrence, soft salmon-red with deeper stripe, narrow spreading waved petals.....	4	6
Lady Mary Shelley, soft clear shell-pink, slightly deeper towards centre, lovely colour, large open waved petals slightly reflexed, tall grower.....	15	0
Lady Tennyson, blush-pink with narrow rose stripe down centre of petals.....	5	6
Leonora, soft salmon shade with deeper coloured centre star, nice open flower, tall spike... ..	10	6
Little Dorritt, soft coral-pink with narrow waved petals, a seedling of Nerine flexuosa.....	4	6
Lorna Doone, pink shaded white, narrow petals, late bloomer	7	6
Lucifer, glowing crimson-scarlet, large open flower.....	15	0
Maiden's Blush, silvery blush-pink deeper towards centre, nice shaped flower, good truss	15	0
Mary Graves, bright orange-scarlet.....	5	6
May Queen, beautiful soft rose-pink shot mauve with rose stripe half way up petals, large broad-petalled flower, fine truss.....	21	0
Miranda, bright cerise, large open flower, narrow petals slightly waved, compact truss.....	15	0
Miss Carrington, producing on a tall stout stem an umbel of large open flowers with broad smooth petals, colour a glistening silvery pink with broad rose-coloured stripe.....	7	6
Miss Cecilly Elwes, rich mauve with broad scarlet stripe dusted with silver, petals waved, pretty open flower. AWARD OF MERIT R.H.S.....	10	6
Miss Shelley, lovely shell-pink, petals daintily waved, good truss.....	30	0
Miss Violet Elwes, vivid scarlet, very fine.....	42	0
Mrs. Arthur Elwes, forming an umbel of large open semi-reflexed flowers, glowing crimson with satiny sheen, one of the deepest coloured Nerines, very handsome.....	42	0
Mrs. George Barr, delicate shell-pink, large handsome spreading flower, good truss, tall stout stem, extra fine.....	15	0
Mrs. H. J. Elwes, flowers soft clear delicate shell-pink with silver sheen and with deeper shading towards centre, petals prettily waved and partly reflexed. FIRST CLASS CERTIFICATE R.H.S., November 4th, 1919.....	42	0
Mrs. Hooker, coral-red with waved petals, very pretty colour, nice open flower.....	7	6
Nancy, bright rose with deeper coloured central star, nice open flower, petals partially reflexed	5	6
Nymphe, clear white with silver dusting and a faint rose stripe, petals prettily waved.....	21	0
Olga, flesh colour with slightly deeper stripe, petals reflexed and waved	7	6
Ossian, silvery white with flesh-pink stripe, large flower.....	10	6
Pandora, soft pink with rose stripe, silver dusted, open flower, waved petals	7	6
Peter Barr, glistening rose, darker towards centre, sparkling golden sheen, large open flowers, large truss carried on stiff stout stem.....each £5 5s.	—	—
Pink Beauty, flowers of medium size, clear rose-pink, pretty and distinct,	7	6
Proserpine, clear pink with rose stripe, large flower, good truss.....	5	6
Queen Alexandra, bright cherry-rose slightly lighter towards centre, large open broad-petalled flower, slightly waved, tall grower, late bloomer	21	0
Queen Nathalie, soft salmon-pink with scarlet stripe, large broad petals, good truss, tall	10	6
Radiance, brilliant rose shot with mauve, large open flower, petals waved.....	10	6
Rene, soft coral with deeper coral stripe, large flower, petals slightly waved, good truss.....	7	6
Rosamund Pollock, soft chamois with mauve flush, salmon stripe, dusted with silver	4	6
Rosebud, flowers trumpet shaped, petals broad, pink with white centre and a short stripe running down the centre. AWARD OF MERIT R.H.S., September 28th, 1915.....	30	0
Roweana, bright coral with scarlet stripe and silver sheen, petals waved, nice truss.....	7	6
Royal Prince, crimson-scarlet shot purple, tall spike, handsome	42	0
Ruth, glowing coral-scarlet, deep scarlet centre, open flower, waved petals, good truss and spike.....	7	6
Salmon Perfection, salmon-scarlet, with large broad waved petals, very handsome.....	7	6
Sarniensis corusca (Scarlet Guernsey Lily), brilliant fiery orange-scarlet with protruding scarlet anthers, tall grower, free bloomer.....	2	6
" rosea (Rose Guernsey Lily), deep rose with scarlet glow	10/6	1 0
Scarlet Beauty, brilliant orange-scarlet self, very showy	7	6
Scarlet Glow, vivid salmon-scarlet with satiny mauve sheen, broad petals, open flower... ..	21	0
Scarletta, deep scarlet-red, large truss, tall, strong grower.....	7	6
Snowdon, handsome umbel of flowers, white with faint pink stripe and prettily waved petals, late flowering.....	10	6
Sunrise, Madder-red shot mauve with scarlet stripe, broad petals.....	7	6
Vivid, flowers vivid scarlet, very showy. AWARD OF MERIT R.H.S., September 28th, 1915	5	6

Hardy Spring-flowering Carpeting & Bedding Plants

To associate with Spring-flowering Bulbs in beds and borders.

For Spring decoration in association with bulbs the following plants will be found most useful. By their use as a groundwork or edging the most beautiful harmonies of colour may be obtained. Few sights in Spring are more beautiful than masses of the gold, white, and blue of the **Alyssum**, **Arabis**, and **Aubrietia** associated with breadths of Daffodils, Scillas, Muscaris, etc., or **Forget-me-Nots** (*Myosotis*) and **Golden Polyanthuses** mingling with Daffodils or with gorgeous and stately Darwin Tulips. The **Acænas**, **Arenaria balearica**, **Herniaria glabra**, **Mossy Saxifragas**, and **Thymes** make beautiful carpets of foliage for the smaller and daintier Spring bulbous flowers, such as **Narcissus Triandrus**, **Chionodoxas**, **Small Crocus Species**, etc.

We have also included in this list a few larger-growing plants specially recommended for the Hardy Flower Border to continue the display of bloom from Spring to early Summer.

ACÆNA (New Zealand Bur), producing dense close carpets of evergreen foliage, rapid growers.	each—s. d.
Buchanani , foliage beautiful soft pea-green, ht. 2 in.	0 9
inermis , producing close cushion of bronzy grey-green foliage ; an effective rapid carpeting plant	0 9
microphylla , very close-growing small bronze foliage covered in Summer and Autumn with crimson spiny balls ; a good rock plant, ht. 1 in.....	0 9
ALYSSUM saxatile compactum (Gold Dust), covered during May with sheets of golden-yellow flowers, ht. $\frac{1}{2}$ ft.....per doz.	8/- 0 9
,, ,, citrinum , masses of pretty lemon-yellow flowers, ht. $\frac{1}{2}$ ft.....	8/- 0 9
,, ,, fl. pl. (Double-flowered Gold Dust), producing sheets of rich golden colour, very handsome.....	1 0
ANDROSACE sarmentosa (Rock Jasmine), low growing pretty alpine, spreading habit, bearing dainty pink flowers ; for sunny situations.....	0 9
ANTENARIA tomentosa (Snow in Summer), close compact evergreen growth of a silver-grey during Summer, quick grower, making a close dense carpet.....	0 9
ARABIS albida fl. pl. , covered with sprays of double pure white sweet-scented flowers, ht. $\frac{3}{4}$ ft. ; a lovely subject for associating with Tulips.....per 100, 55/- ; per doz.	8/- 0 9
ARENARIA balearica , forming a close green carpet, $\frac{1}{4}$ inch high ; excellent for very small bulbous plants	0 9
,, laricifolia , flowers white, fresh green foliage, 4 in., <i>June-July</i> flowering.....	0 9
,, montana (Mountain Sandwort), large snow-white, <i>May-June</i> , ht. 6 in.	0 9
ARMERIA maritima alba (White-flowered Dwarf Sea Thrift or Pink).....per 100, 42/- ; per doz.	5/6 0 6
,, ,, Lauchiana (Red-flowered Dwarf Sea Thrift or Pink) ,, 42/- ; ,, 5/6	0 6
AUBRIETIA (Rock Cress), valuable for associating with the golden Alyssum and white Arabis , ht. 3 to 4 in.	
Dainty , a lovely new variety, raised at our Nurseries, soft blush-coloured flowers.....	1 0
Dr. Mules , deep violet-purple	0 9
Fire King , glowing crimson, very showy.....	0 9
Lavender , clear lavender-blue, beautiful cool colour.....	0 9
Mrs. Lloyd Edwards , bright purple, very free.....	0 9
Peter Barr , rich glowing purple.....	0 9
Wedding Veil , beautiful soft heliotrope flowers.....	0 9
CAMPANULA carpathica China Cup , large open flowers of a clear soft blue shade, ht. 6 in.	1 0
,, ,, cælestina , large soft blue flowers, very showy, ht. 9 in.....	1 0
,, ,, Ditton Blue , large handsome deep blue flowers, ht. 1 ft.....	0 9
,, ,, Isabel , deep violet-blue, ht. 9 in.....	0 9
,, ,, Riverslea , large deep violet-blue flowers.....	0 9
,, G. F. Wilson , deep violet-blue, ht. 4 in.....	0 9
,, pusilla pallida , very dwarf prostrate habit, producing an abundance of dainty bell-shaped pale blue flowers, ht. 3 in.....	0 9
,, turbinata grandiflora , close prostrate growth, large blue bell-shaped flowers, ht. 6 in.	0 9
,, ,, pallida , flowers soft Cambridge-blue, ht. 6 in.....	1 0
CANTERBURY Bells , mixed.....per 100, 21/- ; per doz.	3/6 0 4
CERASTIUM arvense compactum , very close prostrate green foliage with a mass of white blossoms in early Summer ; a charming plant for covering banks.....	0 9
,, tomentosum (Snow in Summer), foliage silvery grey, flowers white, ht. 4 in.....	0 9

Spring-Flowering Carpeting and Bedding Plants—continued.		each—s. d.
CHEIRANTHUS Allioni , brilliant orange-coloured flowers, ht. 1 ft.; handsome for Spring and early Summer effect decoration.....		0 6
COREOPSIS grandiflora , valued for cutting.....		0 9
DAISY, Barr's Giant Flowered Double Rose or White	per 100, 21/-; per doz. 3/-	0 4
FORGET-ME-NOT. See <i>Myosotis</i> .		
FOXGLOVES, Pure White	,, 30/-; ,, 4/-	0 5
,, Choice Mixed	,, 21/-; ,, 3/-	0 4
GENTIANA acaulis (<i>The Garden Gentianella</i>), large erect bell-shaped deep blue flowers in Spring, in bloom more or less throughout the year, ht. ½ ft.....	<i>Strong clumps</i>	1 0
HELIANTHEMUM (<i>Sun Rose</i>), producing sheets of brilliantly coloured flowers in June, beautiful named varieties in distinct colours— rose, pink, white, yellow, crimson, or mixed		0 9
HERNIARIA glabra , having a close green prostrate growth; evergreen and very hardy.....		0 9
HOLLYHOCKS, Double or Single, to colour		1 0
,, ,, ,, ,, mixed		0 9
IBERIS Climax (<i>Snowy White Perennial Candytuft</i>), producing sheets of snow-white flowers in May.....		0 9
,, sempervirens Snowflake , sheets of snowy white flowers.....		0 9
IRIS, Dwarf Bearded or Crimean Iris , for Spring flowering, excellent for massing in beds and front of permanent borders; after blooming, foliage a nice green throughout Summer.		
100 in 25 beautiful named vars.....	63/-	
1 each 25 ,, ,, ,,	18/-	
1 ,, 12 ,, ,, ,,	9/- & 12/-	
In Beautiful Mixture , without names.....	per 100, 55/-; per doz. 7/6	
<i>See also List of Irises in our Hardy Plant Catalogue.</i>		
IRIS, Tall Bearded and hardy border species , for Summer flowering.		
Our collection of these lovely border Irises is the finest and most complete in existence. The plants offered are strong and will bloom 1922. For full list of varieties and species see our Hardy Plant Catalogue , free upon application.		
MALVA moschata (<i>Pink Musk Mallow</i>), ht. 2 ft., <i>June-August</i>	per doz. 6/6	0 7
,, ,, alba (<i>Snowy White Musk Mallow</i>), ht. 2 ft.....	,, 6/6	0 7
MYOSOTIS (<i>Forget-Me-Not</i>).		
Barr's Alpine Blue , intense blue, compact dwarf habit, 9 in.....	per 100 21/-; ,, 3/6	0 4
Barr's Blue King , rich deep blue, very fine, 10 in.....	,, 21/-; ,, 3/6	0 4
NEPETA Mussini , clouds of light blue flowers May to September; excellent for borders or rock garden, ht. 1 ft.....	per 100, 45/-; per doz. 6/-	0 7
PAPAVER nudicaule (<i>Iceland Poppies</i>), in white, yellow, and orange shades.....	,, 3/6	0 4
PHLOX subulata Brightness (<i>American Moss Pink</i>), covering the ground with a green moss-like carpet, and producing dainty bright rose-coloured flowers during May.....		1 0
Daisy Hill , flowers soft rose with crimson centre, very beautiful.....		0 9
Sprite , flowers a beautiful soft rose-pink.....		0 9
PINK Mrs. Sinkins , large pure white sweet clove-scented flowers.....		0 9
PINKS, Beautiful Border Varieties. See <i>Hardy Plant Catalogue</i> .		
PRIMROSES, Hardy Garden Varieties.		
Barr's Single Blue Shades		1 0
Barr's Single White	per doz. 4/6	0 5
Polyanthus-Primrose, Barr's Highly coloured large bunch-flowered strain	,, 8/-	0 9
,, ,, Barr's large bunch-flowered Yellow , a charming associate for Blue Forget-me-Nots (<i>Myosotis</i>) and Tulips.....	per 100, 42/-; per doz. 5/6	0 6
,, ,, Barr's large bunch-flowered White strain	per 100, 42/-; ,, 5/6	0 6
SAXIFRAGAS, Mossy Varieties, etc. , forming fresh green mossy carpets covered during May with dainty flower spikes, ranging in colour from pure white to pink and crimson shades.		
	Beautiful named Varieties	0 9
SEDUM (<i>Stonecrop</i>), in beautiful named varieties suitable for carpeting		0 9
SEMPERVIVUM (<i>Houseleek</i>), in named varieties.....		0 9

Spring-Flowering Carpeting and Bedding Plants—continued. each—s. d.

SWEET WILLIAM. Beautiful old-fashioned spring flowers.

Pink Beauty , soft salmon-rose.....	per doz.	4/-	0	5
Scarlet Beauty , rose-scarlet.....	„	4/-	0	5
Dark Coloured Hybrids	„	4/-	0	5
Barr's Perfection Auricula flowered	„	4/-	0	5

THYMUS lanuginosus, the **Woolly-Leaved Mountain Thyme**..... 0 9

„ Serpyllum (Wild Mountain Thyme), sheets of pink flowers.....			0	9
„ „ albus , producing sheets of snowy white flowers.....			0	9
„ „ coccineus , sheets of brilliant crimson flowers.....			1	0

VERONICA incana, effective silvery grey foliage and showy violet-blue flowers, flowering June to August, ht. ½ ft. 0 9

Teucrium dubia, of prostrate growth, with shiny evergreen foliage, smothered in early Summer with dainty spikes of brilliant blue flowers, ht. 4 in. 0 9

„ „ **Trehane**, light blue flowers and golden-yellow foliage, ht. 4 in.; a very pretty plant 0 9

VIOLAS (Tufted or Bedding Pansies) for Autumn planting—**Purple, Deep Mauve, Dark Blue, Pale Blue, Soft Heliotrope, Golden-Yellow, Pale Yellow, Pure White**.....each colour, per 100, 21/-; per doz. 3/- —

VIOLA cornuta purpurea, a rapid free grower and profuse bloomer, flowers slaty blue, prized alike for carpet bedding and cut bloom.....per doz. 5/- 0 6

WALLFLOWERS, Transplanted Seedlings for Autumn planting.

Blood-Red, Golden-Yellow, Primrose Dame, Eastern Queen, Ruby {	} each variety, per 100, 12/6; per doz. 1/9 —
Gem and Vulcan	

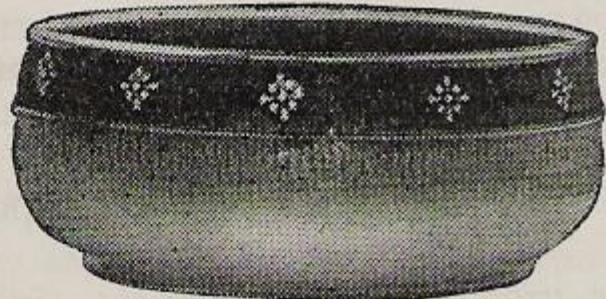
BULB BOWLS AND VASES,

for growing Spring-flowering Bulbs in Barr's Peat-fibre Mixture.

The vases are of elegant shape, and without drainage holes, thus saving the use of saucers. They will be found most useful for Daffodils, Hyacinths, Tulips, Crocuses, Early Scillas, Snowdrops, Chionodoxas, Iris Reticulata, Jonquils, etc., either for table decoration or the greenhouse. During Summer they may be used for standing little pot-plants in and other table decorations.

No. 7341.

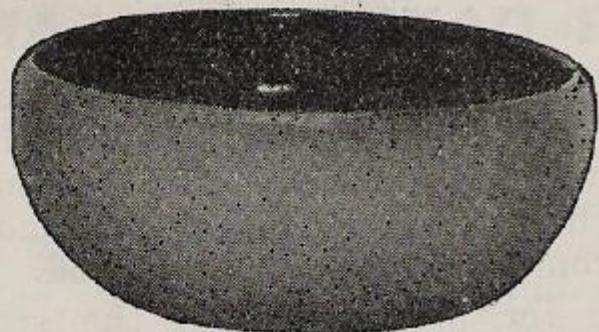
Doulton Ware Fancy Vase, light brown glazed ware, with fancy border. 5½ in. diam. 4/- each. Also without fancy border in plain **Green** or **Dark Blue**.



7 in. diam. 5/- each.

No. 3290.

Glazed ware.



Dark Green	6 in. diam. 3/3; 7 in. diam. 4/3.
	8 „ „ 6/- each.
Old Rose	6 in. diam. 3/6; 7 in. diam. 4/9.
	8 „ „ 6/9 each.

No. 520.

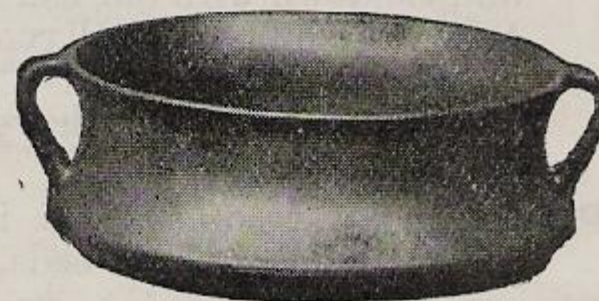
Olive Green, plain glazed ware.



6 in. diam. 2/6 7 in. diam. 3/9; 8 in. diam. 4/6 each.

No. 586.

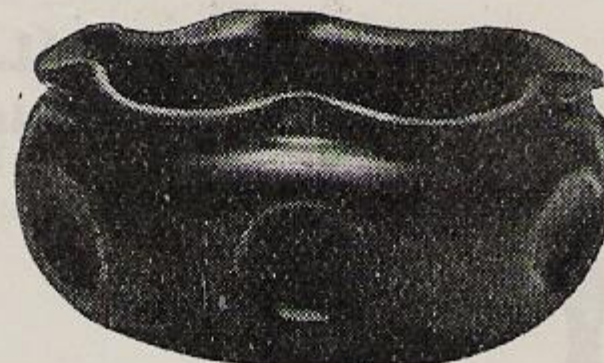
“Egyptian,” glazed ware, in **Green, Mauve, and Pink**.



4 in. diam. 2/9 each.	6 in. diam. 4/6 each
	8 in. diam. 6/6 each.

No. 592.

Green Glazed Ware.



6 in. diam. 2/9 each.	7 in. diam. 3/9 each.
8 in. diam. 4/9 each.	9 in. diam. 5/3 each.

Genuine Japanese Bowls, beautifully decorated.



9½ in. diam. 9/6 each.	10¾ in. diam. 15/- each.
	12 in. diam. 21/- each.

Doulton Ware, glazed green, 2½ in. diam. 1/- each. 4 in. diam. 1/6 each.

Hyacinth Glasses, various patterns, 1/6, 2/6 and 3/6 each.

MANY OTHER DESIGNS ALSO IN STOCK.

MANURES, SOILS, PEAT-FIBRE, etc.

Barr's Phytobroma, the best Manure for Daffodils, Hyacinths, Tulips, etc., and for Flower Borders generally. It should be mixed with the soil *below* the bulbs at planting time at the rate of 2 to 3 oz. to the square yard, and in spring, when the bulbs are showing above ground, a top-dressing may be given of 3 oz. to the square yard. **For Pots**, mix *Phytobroma* with the soil, to be used at the rate of 1 lb. to the bushel, and in spring, when growth is showing, top-dress once a fortnight, using a small teaspoonful and well mixing with surface soil. Leaflet with further particulars on application. 2-lb. carton 1/4, 7 lb. 3/6 ; 14 lb. 6/6 ; 28 lb. 11/6 ; 56 lb. 22/- ; 112 lb. 42/-.

Basic Slag, 14 lb. 2/6 ; 28 lb. 3/6 ; 56 lb. 6/6 ; per cwt. 12/6.

Bone Meal (*Genuine fine Crushed Bones*), best quality, 7 lb. 2/6 ; 14 lb. 4/6 ; 28 lb. 8/6 ; per cwt. 32/-.

Bone Flour, best quality, 7 lb. 2/3 ; 14 lb. 4/3 ; 28 lb. 8/- ; 56 lb. 15/6 ; per cwt. 30/-.

Nitrate of Soda, 7 lb. 3/6 ; 14 lb. 6/6 ; 28 lb. 12/6 ; 56 lb. 24/- ; per cwt. 45/-.

Sulphate of Ammonia, 7 lb. 3/3 ; 14 lb. 6/- ; 28 lb. 11/6 ; 56 lb. 21/- ; per cwt. 40/-.

Sulphate of Iron, 7 lb. 2/6 ; 14 lb. 4/6 ; 28 lb. 8/6 ; 56 lb. 16/- ; per cwt. 30/-.

Sulphate of Potash, 7 lb. 4/6 ; 14 lb. 8/6 ; 28 lb. 16/- ; 56 lb. 30/-.

Superphosphate of Lime, 7 lb. 1/6 ; 14 lb. 2/9 ; 28 lb. 5/- ; 56 lb. 9/6 ; per cwt. 18/6.

Tipulite, soil fumigant and insecticide; destroys ants, leatherjackets, slugs, wireworm and all soil grubs; harmless to plant life. In tins 1/6 and 2/6 each ; 7 lb. bags 3/6 ; 14 lb. 5/3 ; 28 lb. 7/6 ; 56 lb. 10/6 ; per cwt. 19/-.

Vaporite, destroys wireworm, woodlice, and other injurious soil pests, small tin 1/6 ; about 7 lb. tin 3/9 ; about 14 lb. 5/6 ; about 28 lb. 8/- ; 1/2 cwt. 11/3 ; 1 cwt. 17/6. Full particulars on application.

Loam, Peat, Leaf Soil, Silver Sand, each, per bushel 4/6.

Lime, fine ground, 28 lb. 3/- ; 56 lb. 5/6 ; per cwt. 10/6.

Limbux, a specially treated white Lime Flour, 7 lb. 2/6 ; 14 lb. 4/6 ; 28 lb. 8/3 ; per cwt. 21/-.

Barr's Specially Prepared Potting Soil, containing a suitable quantity of *Phytobroma*, per bushel 4/6.

Barr's Improved Peat-fibre, Shell, and Charcoal Mixture for growing Bulbs in Bowls, Jardinets, Glasses, etc. In the case of glasses, half fill with the Fibre Mixture, and add water till no more can be absorbed. Place the bulb so as to rest the base on the preparation, and tie down with old fish netting or other material, leaving an opening in the centre for the shoot. When the bulb has well rooted the covering may be removed ; care must be taken that the material in the glass is kept moist. The same remarks apply to bulbs grown in bowls, etc. : they must be kept in place till they have rooted. Our Fibre Mixture is sent out *ready for use*. **Per bushel 5/6 ; per peck 1/6.**

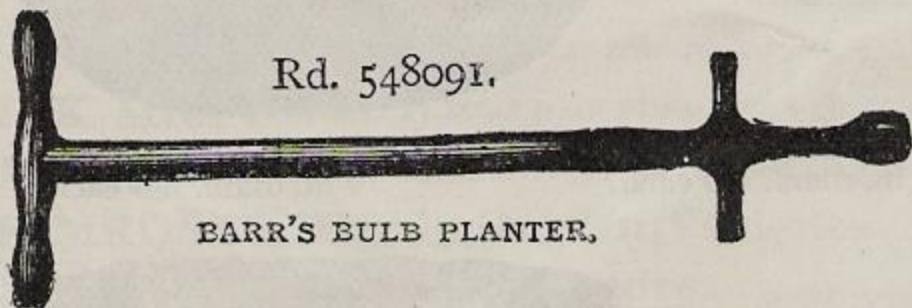
Peat-fibre, recommended in preference to Cocoa-fibre for plunging bowls, pots, etc., and as a winter mulch to bulb-beds, etc., per bushel 2/6.

Small Pebbles and Charcoal, suitable for growing Hyacinths, etc., in bowls and vases without drainage, per quart 8d. ; per peck 4/6.

Charcoal (fine twig), per peck 1/6 ; per bushel 5/6.

TWO USEFUL TOOLS FOR DAFFODIL PLANTING.

Barr's Special Bulb Planter, specially designed for planting Daffodils and other bulbs in grass. This tool cuts and lifts a clean circular piece of turf, which is released from the cup when the second hole is made, and lies ready at hand to fill in the holes when the bulbs have been put



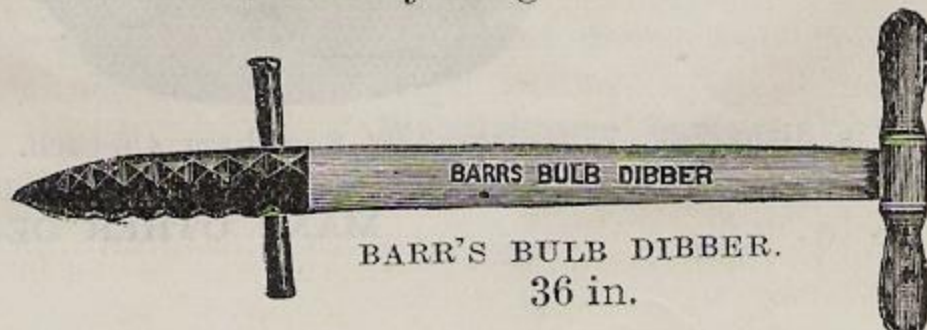
(Highly commended by the Royal Horticultural Society.)

in, it being only necessary to remove a little of the soil from the bottom of the sod. A time must be chosen for planting when the ground has become softened after early autumn rains, and not when in a hard and baked condition, as it is then impossible to use this, or indeed any other tool with success. By the use of BARR'S SPECIAL BULB PLANTER a large number of bulbs may be planted in a very short time, and without the least disturbance of the sward. The length of the tool is 38 inches over all, weight about 3 1/2 lbs. The cup is manufactured from high-class hardened steel and always carries a keen cutting edge.

Supplied in 3 sizes of cup :—To cut out a circular hole 2 inches diameter } 25/- each.
 " " " 2 1/4 " " }
 " " " 2 1/2 " " }

We shall send the medium size (2 1/4 in.) if no instructions to the contrary are given.

Barr's Special Bulb Dibber, specially designed for dibbling bulbs into borders, etc. ; steel shod, with strong iron tread and cross wooden handle ; a good strong heavy tool, weight about 6 3/4 lbs., length 36 inches over all. **18/6 each.**



BARR'S BULB DIBBER. 36 in.

Special Notices and Terms of Business.

GARRIAGE OF BULBS.

Orders for Bulbs to value of 40s. and upwards sent **Carriage Paid** to any Railway Station in the United Kingdom.

The above carriage terms do not include manures, soils or tools. These will either be sent by goods train, carriage forward, or consigned at lowest rate and carriage charged on invoice.

5% Cash Discount on Bulb Orders of 40s. and upwards.—1s. in the £ discount is allowed on Bulb Orders of 40/- and upwards for Cash with Order (*with the exception of the special Collections offered on pages 4 and 5, which are strictly nett*). The same discount may also be deducted from all Bulb Accounts of 40/- and upwards when paid within 14 days from date of invoice (*excepting Collections offered on pages 4 and 5, which are nett*).

Terms of Credit.—Our books are made up half-yearly, when all accounts are due nett. Interest at the rate of 5% per annum will be charged on overdue Accounts.

Remittances.—Money Orders and Postal Orders should be made payable at Bedford Street Post Office; these and all Cheques should be crossed "London County, Westminster and Parr's Bank." Small amounts may be remitted in Postage Stamps, or Coin in a Registered Letter.

Packages.—Boxes, Bags, etc., are charged at cost price, but these may be deducted from our account if returned Carriage Paid within a fortnight. *Returned empties should have the sender's name on the address label for identification, and an advice sent by post, stating date of despatch and name of Railway Co.*

Nurseries at Taplow, Bucks.—Visitors are invited during spring to see our magnificent Collections of Daffodils and Tulips in bloom. The Nurseries are adjoining the main line of the Great Western Railway, and are entered from the Bath Road within quite a short distance of **Taplow Station**. Cab Rank at Taplow Station.

Naming Daffodils.—Cut specimens of Daffodils we undertake to name correctly, at the charge of 4d. each, 3s. per dozen, to cover attendant expenses. Address all cut specimens to be named, accompanied by a remittance, to our Nurseries, Taplow, Bucks.

Catalogues.—Our **Seed Guide** is published 1st of January, **List of Bulbs and Tubers for Winter and Spring Planting** 1st of February, **Hardy Plant Catalogue** in February, **List of Autumn-flowering Bulbs** (Crocus species, Colchicums, etc.) in July, **Daffodil and General Bulb Catalogues** in August. We are always pleased to forward any of these Catalogues, free of charge, to friends of our Customers on receipt of a line requesting us to do so.

Gardeners.—We keep a special Register of Gardeners in want of situations, and shall be pleased to put such in communication with any of our Customers requiring Head Gardeners.

DAFFODIL COLOURED PLATES.

These Daffodil Plates can be had at the following charges:—

- (1) Group of *Barrii conspicuus*, *Queen of Spain*, *Glory of Leiden*, and *Victoria*. 3d.
 - (3) " *Barrii conspicuus*, *Triandrus albus*, *Mrs. Langtry*, *J. B. M. Camm*, *Queen of Spain*, *Cyclamineus* and *Minimus*. 4d.
 - (4) " *Queen of Spain*. 4d.
 - (6) " *Madame de Graaff* and *Apricot*. 4d.
 - (7) " *Weardale Perfection*, *Monarch*, and *Lulworth*. 3d.
 - (8) " *Peter Barr*, *Weardale Perfection*, and *Monarch*. 3d.
 - (9) " *Bedouin*, *Fireflame*, and *Sunrise*. 3d.
 - (10) " *Queen of the North*, *Czarina*, and *Seraphine*. 3d.
 - (11) " *Lord Roberts*, *Loveliness*, and *Calpurnia*. 4d.
 - (12) " *Hoop Petticoat Yellow* and *Sulphur*. 4d.
 - (13) " *Circlet*, *Armored*, *Southern Star*, and *Felicity*. 4d.
 - (14) " *Dresden*, *Socrates*, *Eros*, and *Messina*. 4d.
 - (15) " *Michael Angelo*, *Sir Galahad*, and *Michael*. 3d.
 - (16) " *King Alfred*, *Mrs. Buchanan*, *Alice Knights*, and *Sir Galahad*. 3d.
 - (17) " *Dresden*, *St. Olaf*, *Chamois*, and *Red Emperor*. 3d.
 - (18) " *Snow King*, *Czarina*, *Challenger*, *Rev. D. R. Williamson*, *Masterpiece*, *Warley Scarlet*, *Triandrus Hybrid*, *Peter Barr*, *Lord Roberts*, *Fire Queen* (this coloured plate is reproduced from a photograph of one of our exhibition stands). 4d.
 - (19) Miniature coloured Illustrations of *Weardale Perfection*, *Lord Roberts*, *Seagull*, *Mohican*, *Duke of Bedford*, *Cœur de Lion*, *Gloria Mundi*, *Lycidas*, *Ariadne*, *King Alfred*, *Salmonetta*, *Alice Knights*, *Fairy Queen*, *Primrose Phoenix*, *Red Beacon*, *Plenipo*, *Herrick*, and *Argent*. 6d.
- A COMPLETE SET OF THE ABOVE 17 PLATES SENT, POST PAID, FOR 5s.

BOOKS ON DAFFODILS.

Daffodil, The Book of the (By Rev. S. E. Bourne), containing valuable information on the cultivation of the Daffodil gained by the results of the author's own personal experience, 3/6; post free, 3/10.

Daffodil. The R.H.S. Year Book, for 1914. Full of interesting matter for Daffodil lovers, 2/6; post free 3/3.

" " " " **1915.** Full of interesting matter for Daffodil lovers, 5/-; post free 5/9.

Narcissus, its History and Culture (by F. W. Burbidge), an interesting work giving the History of the Daffodil to date of publication—1875, with 48 coloured plates, 35/-; post free 36/-.

HIGHEST AWARDS FOR DAFFODILS

FORTY-NINE GOLD MEDALS, THREE SILVER CHALLENGE CUPS,
Two R.H.S. Silver Cups for New Seedlings and many First-Class Certificates.



GOLD MEDAL.

Royal Horticultural Society, London,
1915, 1916, 1917, 1920 and 1921.



GOLD MEDAL.

Midland Daffodil Society, Birmingham,
1915, 1916, 1919 and 1921.



GOLD MEDAL.

Leeds, April 29th, 1915.



THE ENGLEHEART THIRTY GUINEA CHALLENGE CUP.

Awarded to us by the Royal Horticultural Society, London, for the 12 finest New Seedling Daffodils.

THE WALTER WARE CHALLENGE CUP.

Awarded to us by the Midland Daffodil Society for the best 18 Narcissus Triandrus Hybrids.

BARR & SONS

(Peter R. Barr, J. W. H. Barr, G. H. Barr),

11, 12, & 13, King Street, Covent Garden, London, W.C. 2.