



*Heliophila coronopifolia*

---

*Morgan Mangelsen*



Photo courtesy of Puccio

## TAXONOMY

- ❖ Hardy in zones 8-10
- ❖ Common names are African Blue Flax, Blue Eyes, Showy Sunflax, or Wild Flax



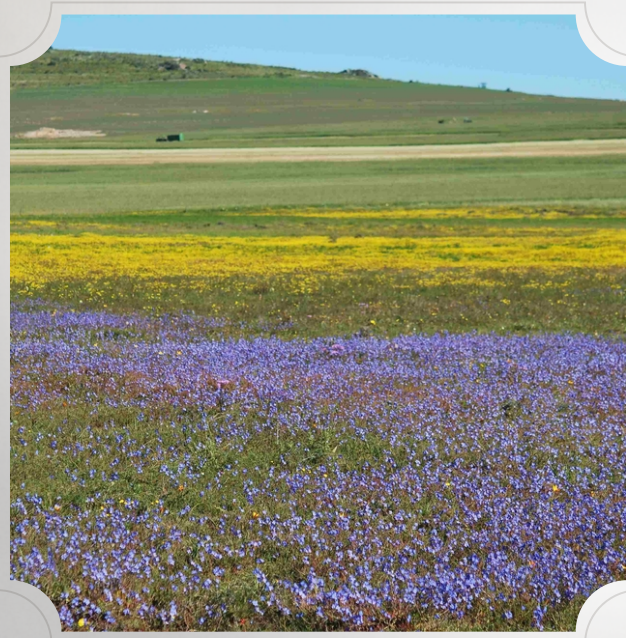


Photo courtesy of Charles Sturton

## **GEOGRAPHIC DISTRIBUTION AND NATIVE HABITAT**

- ❖ Located in South Africa near Cape Town
- ❖ Mediterranean climate
- ❖ Typically found in open fields
- ❖ Only seven percent of the flora in the area are annuals





## TAXONOMIC DESCRIPTION

- ❖ Herbaceous annual
- ❖ Erect in stature
- ❖ Leaves are filliform but can be pinnately compound
- ❖ Light green to blue-green in color
- ❖ Flowers have four petals, four sepals and six stamens
- ❖ Seeds are located in long thin siliques
- ❖ No indigenous uses but is being studied for its blue pigments





## PROPAGATION METHODS

- ❖ Seed is best option
- ❖ Short life cycle
- ❖ No apparent dormancy
- ❖ Propagated seeds in 288 plug tray
  - ❖ Half covered/half uncovered
- ❖ After one week 85% germination was observed, 100% after two weeks
- ❖ Transferred to capillary mats after 2 weeks
- ❖ Transplanted after 3 weeks
- ❖ Ten weeks after sowing, flower buds emerged on each plant





## MARKET NICHE

- ❖ Target sales date would be mid-May
- ❖ Possible holidays are Mother's Day and Independence Day
- ❖ Initial problems with sales, possibly
- ❖ Very short life cycle





Photo courtesy of Charles Sturton

## ANTICIPATED CULTURAL REQUIREMENTS

- ❖ Zones 8-10
- ❖ Tolerates heat and drought but prefers regular watering
- ❖ Prefers well-drained soil
- ❖ Not a lot of information on nutrition requirements or pest issues





# PRODUCTION SCHEDULE

- ❖ Seeds should be sown in week 12
- ❖ Germination will take 1-2 weeks
- ❖ Plants should be taken out of mist house in second week
- ❖ Transplant to 606 trays in week 3
- ❖ Remain under long day conditions
- ❖ Plants should not be sold in the flowering stage



A decorative border with intricate floral and scrollwork patterns in white, set against a dark background. The border frames the central text area.

# WORKS CITED

---

Stirton, Charles. *Heliophila Coronopifolia*. 2013. Photograph. Tienie Versveld Nature Reserve.

"Cape Town Weather, South Africa Weather Averages." Cape Town, South Africa Weather Averages. World Weather Online, n.d. Web. 05 May 2013.

De Beer, Abré, and Melané A. Vivier. "Four Plant Defensins from an Indigenous South African Brassicaceae Species Display Divergent Activities against Two Test Pathogens despite High Sequence Similarity in the Encoding Genes." *BMC Research Notes* 4.1 (2011): 459. Print.

Hannah, Lee, Dave Panitz, and Guy Midgley. "Cape Floristic Region, South Africa." *Climate and Conservation* (2012): 80-91. Print.

"*Heliophila Coronopifolia* / Showy Flax." *Plant Genesis*. Plant Genesis, n.d. Web. 05 May 2013.

Puccio, Pietro. "*Heliophila Coronopifolia*." Dr. Giuseppe MAZZA. PhotoMAZZA, n.d. Web. 05 May 2013.

Saito, Norio, Fumi Tatsuzawa, Kenjiro Toki, Koichi Shinoda, Atsushi Shigihara, and Toshio Honda. "The Blue Anthocyanin Pigments from the Blue Flowers of *Heliophila Coronopifolia* L. (Brassicaceae)." *Phytochemistry* 72.17 (2011): 2219-229. Print.