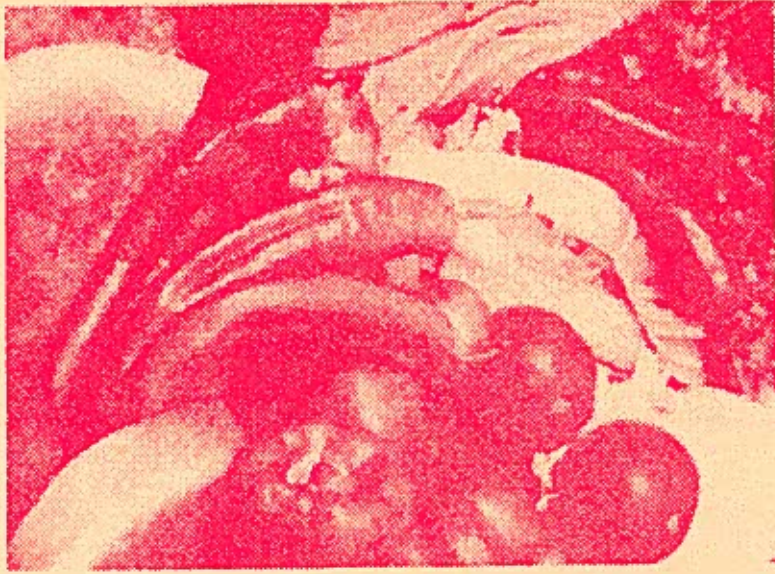


AGRICULTURE & NATURAL RESOURCES  
GUAM COOPERATIVE EXTENSION  
COLLEGE OF AGRICULTURE & LIFE SCIENCES  
UNIVERSITY OF GUAM

*Chamorro and Scientific Names  
of  
Fruits & Vegetables*

Victor T. Artero  
Frank J. Cruz  
Vincent M. Santos





## Foreword

This publication was developed to provide information on local and scientific names of fruits and vegetables of Guam. However, notice is given that botanical (scientific) names of plants change periodically as taxonomy work further refines plant groupings. In addition, the local names cited are based on the authors' familiarity and do not necessarily impart the notion that these names are in fact "the" or official local names. Because Chamorro is principally a spoken language, some local names as well as their spelling may vary among Chamorros. Some local names, for example "Kamba" for Cucumber, have evolved as a result of farmers common usage. Notice should also be taken that some local names vary between Guam and the Commonwealth of the Northern Mariana Islands.

Island history reveals that a great number of fruits and vegetables were introduced during the Spanish era. And as such, most of the local names are either similar with or a variation of Spanish sounding names. In contrast, the more recently introduced species have either English or Asiatic sounding names and, in some instances, the English or Asiatic names are adopted entirely as local names.

The format of the publication is such that the names of the fruits and vegetables are grouped based on plant families. Hence, plant names are listed alphabetically by English family names and English common names. The format can also function as a reference guide for those practicing crop rotation by ensuring that the ensuing crop grown in a particular field is not in the same family. In addition, the notations or numbers in superscript found throughout the publication are all compiled on page 11.

Lastly, some of the fruits and vegetables listed are not common or abundant on Guam but are found on a very small scale basis.



## COMMON NAME

## CHAMORRO NAME

## BOTANICAL NAME

*Amaryllis Family**Amaryllidaceae*

Garlic

Ahos  
(*a hos*)*Allium sativum*

Onion, bulb

Sebollas  
(*se bo jas*)*Allium cepa*  
(Proliferum group)

Onion, Green Bunching

Sebollas Chamorro  
(*si bo jas Chamorro*)*Allium fistulosum**Arum Family**Araceae*Coco Yam  
(White Tuber Taro)Sunin Honolulu  
(*su nin Honolulu*)*Xanthosoma violaceum*<sup>4</sup>

Giant Dry Land Taro

Piga  
(*pee ga*)*Alocasia indica*<sup>1</sup>

Giant Swamp Taro

Baba  
(*ba ba*)*Cyrtosperma edule*<sup>2</sup>

Red Taro

Suni  
(*su ni*)*Colocasia esculenta*<sup>3</sup>*Banana or Musa Family**Musaceae*

Banana, Dessert Type

Aga<sup>5</sup>  
(*a ga*)*Musa* spp.<sup>6</sup>Cavendish Group  
Giant Cavendish  
Dwarf Cavendish  
Valerie  
WilliamsLakatan  
Guahu  
Chiquita (Taiwan<sup>7</sup>)Lady Finger group  
Apple Banana  
Fiji  
Jamaican Red  
OtherManila  
Fiji

Makao

Banana, Cooking Type

Chotda<sup>8</sup>  
(*chot da*)*Musa* spp.<sup>6</sup>

Common varieties

Galayan  
Long  
Saba (Also called Palau)  
Tanduki*Bixa Family**Bixaceae*Annatto  
(Lipstick Plant)Achote  
(*a cho te*)*Bixa orellana**Capers Family**Capparidaceae*

Capers (Local)

Atkaparas  
(*at ka pa ras*)*Capparis spinosa*  
var. *mariana*

Capers (Imported)

*Capparis cordifolia*

| COMMON NAME                           | CHAMORRO NAME                               | BOTANICAL NAME                |
|---------------------------------------|---|-------------------------------|
| <b>Carica or Papaya Family</b>        |   | <b>Caricaceae</b>             |
| Papaya                                | Papalla<br>(pa pa ja)                       | <i>Carica papaya</i>          |
| <b>Cashew Family</b>                  |   | <b>Anacardiaceae</b>          |
| Cashew                                | Kasoy<br>(ka soy)                           | <i>Anacardium occidentale</i> |
| Mango                                 | Mangga<br>(mang ga)                         | <i>Mangifera indica</i>       |
| Mango, Saipan                         | Manggan Saipan<br>(mang gan sa i pan)       | <i>Mangifera odorata</i>      |
| Spanish Plum                          | Sineguelas<br>(si ne gue las)               | <i>Spondias purpurea</i>      |
| Vi Apple                              | Vi Apple*                                   | <i>Spondias cytherea</i>      |
| <b>Citrus or Rue Family</b>           |   | <b>Rutaceae</b>               |
| Calamondin lemon                      | Kalamansi<br>(ka la man si)                 | <i>Citrus mitis</i>           |
| Grapefruit                            | Hahet-magas <sup>9</sup><br>(ka hit ma gas) | <i>Citrus paradisi</i>        |
| Kusai lime                            | Lemon-lime                                  | <i>Citrus aurantifolia</i>    |
| Lemon                                 | Lemon-reat<br>(le mon re at)                | <i>Citrus limon</i>           |
| Lime (Local)                          | Lemon-chena<br>(le mon chee na)             | <i>Limonia aurantifolia</i>   |
| Limeberry                             | Lemon-de-chena<br>(le mon de chee na)       | <i>Triphasia trifolia</i>     |
| Mexican/Keylime                       | Lemon-adamelong<br>(le mon a da me long)    | <i>Citrus aurantifolia</i>    |
| Orange                                | Kahet<br>(ka hit)                           | <i>Citrus sinensis</i>        |
| Pomelo                                | Kahet-magas <sup>9</sup><br>(ka hit ma gas) | <i>Citrus grandis</i>         |
| Sour Orange                           | Lalanga<br>(la lang ha)                     | <i>Citrus aurantium</i>       |
| Tangerine                             | Lalanghita<br>(la la nghi ta)               | <i>Citrus reticulata</i>      |
| <b>Combretum Family</b>               |   | <b>Combretaceae</b>           |
| Local Almond                          | Talisai<br>(ta lee sai)                     | <i>Terminalia catappa</i>     |
| <b>Custard Apple or Annona Family</b> |   | <b>Annonaceae</b>             |
| Custard Apple<br>(Bullocks-heart)     | Anonas<br>(a no nas)                        | <i>Annona reticulata</i>      |
| Sweetsop<br>(Sugar apple)             | Atis<br>(a tis)                             | <i>Annona squamosa</i>        |
| Soursop                               | Laguana<br>(la gwa na)                      | <i>Annona muricata</i>        |

\* Mistakenly called lychee



| COMMON NAME | CHAMORRO NAME | BOTANICAL NAME |
|-------------|---------------|----------------|
|-------------|---------------|----------------|

**Cycad Family**

**Cycadaceae**

Federico Palm

Fadang  
(fa dang)

*Cycas cirinalis*

**Ginger Family**

**Zingiberaceae**

Chinese Ginger (White)  
Turmeric (Yellow)

Ginger  
Mangu  
(ma ngu)

*Zingiber officinale*  
*Curcuma longa*

**Gourd or Cucurbit Family**

**Cucurbitaceae**

Bittermelon

Atmagosu  
(at ma go su)

*Momordica charantia*

Bottle Gourd

Kalabasa  
(ka la ba sa)

*Lagenaria siceraria*

Cantaloupe

Melon-bastos  
(me lon bas tus)

*Cucumis melo*  
(Reticulatus Group)

Cucumber

Kamba  
(kam ba)  
Pepino<sup>7</sup>  
(pe pi no)

*Cucumis sativus*

Honey Dew

Melon-fino  
(me lon fee nu)

*Cucumis melo*  
(Inodorous Group)

Melon: Local White and  
Oriental Yellow varieties

Pepino  
(pe pi no)  
Pepinon-pakpak<sup>7</sup>  
(pe pi non - pak pak)

*Cucumis melo*

Pumpkin

Kalamasa  
(ka la ma sa)

*Cucurbita pepo*

Spanish Gourd  
(Chayote)

Chaiote  
(chai o te)

*Sechium edule*

Vegetable Sponge  
(Sponge Gourd)

Patola  
(pa to la)

*Luffa acutangula*

Watermelon

Chandiya  
(chan di ya)

*Citrullus lanatus*

Waxgourd

Kondot  
(kon dot)

*Benincasa hispida*

**Grass Family**

**Gramineae**

Corn

Mais - Helotis<sup>10</sup>  
(ma is) - (he lo tis)

*Zea mays*

Rice

Fa'e  
(fa e)

*Oryza sativa*

Sugarcane

Tupo  
(tu pu)

*Saccharum officinarum*

| COMMON NAME                                  | CHAMORRO NAME                      | BOTANICAL NAME   |
|--|------------------------------------|--|
| <b>Laurel Family</b>                         |                                    |  |
| Avocado                                      | Alageta<br>(a la ge ta)            | <b>Lauraceae</b><br><i>Persea americana</i>  |
| <b>Lily Family</b>                           |                                    |  |
| Asparagus                                    | Asparagus                          | <b>Liliaceae</b><br><i>Asparagus officinalis</i> <sup>11</sup>                                     |
| <b>Madder Family</b>                         |                                    |  |
| Coffee<br><br>Arabian<br>Liberian<br>Robusta | Kafe<br>(ka fae)                   | <b>Rubiaceae</b><br><br><i>Coffea arabica</i><br><i>Coffea liberica</i><br><i>Coffea canephora</i> |
| <b>Mahogany Family</b>                       |                                    |  |
| Santol                                       | Santot<br>(san tot)                | <b>Meliaceae</b><br><i>Sandoricum koetjape</i>   |
| <b>Mallow Family</b>                         |                                    |  |
| Okra (Gumbo)                                 | Okra                               | <b>Malvaceae</b><br><i>Abelmoschus esculentus</i>  |
| <b>Marant Family</b>                         |                                    |  |
| Arrowroot                                    | Aroru or Sagu<br>(a ro ro / sa gu) | <b>Marantaceae</b><br><i>Maranta arundinacea</i> <sup>12</sup>                                     |
| <b>Mint Family</b>                           |                                    |  |
| Mint or Spanish Mint                         | Yerba buena<br>(jet ba bwe na)     | <b>Labiataea</b><br><i>Mentha arvensis</i>   |
| <b>Morning Glory Family</b>                  |                                    |  |
| Swamp Cabbage                                | Kangkong<br>(kang kong)            | <b>Convolvulaceae</b><br><i>Ipomoea aquatica</i>   |
| Sweet Potato                                 | Kamuti<br>(ka mu ti)               | <i>Ipomoea batatas</i>   |
| <b>Mulberry Family</b>                       |                                    |  |
| Breadfruit                                   | Lemai<br>(le mai)                  | <b>Moraceae</b><br><i>Artocarpus atilis</i>  |
| Breadfruit<br>(Seeded Breadfruit)            | Dokdok<br>(dog dog)                | <i>Artocarpus mariannensis</i>   |
| Jak-fruit or Jackfruit                       | Langka<br>(Lang ka)                | <i>Artocarpus heterophyllus</i>  |

## COMMON NAME

## CHAMORRO NAME

## BOTANICAL NAME

*Mustard or Crucifer Family**Brassicaceae*

|                  |  |  |
|------------------|--|--|
| Broccoli         | Broccoli   | <i>Brassica oleracea</i>                     |
| Brussels Sprouts | Brussels Sprouts                                       | (Gemmifera Group)                            |
| Cauliflower      | Cauliflower  | (Botrytis Group)                             |
| Chinese Cabbage  | Napa<br>( <i>na pa</i> )                               | <i>Brassica rapa</i>                         |
| Pak-Choy         | Petsai   | (Chinensi Group)                             |
| Petsai           | Petsai   |  |
| Won-Bok          |  | (Pekinensis Group)                           |
| Head Cabbage     | Cabbage<br>Rapollo <sup>7</sup><br>( <i>ra po ju</i> ) | <i>Brassica oleracea</i><br>(Capitata Group) |
| Radish           | Radish   | <i>Raphanus sativus</i>                      |

*Myrtle Family**Myrtaceae*

|                                 |                               |                              |
|---------------------------------|-------------------------------|------------------------------|
| Guava                           | Abas<br>( <i>a bas</i> )      | <i>Psidium guajava</i>       |
| Java Plum or Jambolan           | Limboy<br>( <i>lim boy</i> )  | <i>Syzygium cumini</i>       |
| Malay Apple<br>(Mountain Apple) | Makupa<br>( <i>ma ku pa</i> ) | <i>Syzygium malaccensis</i>  |
| Wax Jambu<br>(Mountain Apple)   | Makupa<br>( <i>ma cu pa</i> ) | <i>Syzygium samarangense</i> |

*Nightshade Family**Solanaceae*

|                       |  |   |
|-----------------------|--|---|
| Eggplant              | Berenghenas<br>( <i>be re nghe nas</i> ) | <i>Solanum melongena</i>                  |
| Pepper, Cayenne Chili | Doni pika<br>( <i>do ni pee ka</i> )     | <i>Capsicum annuum</i><br>(Longum Group)  |
| Pepper, Sweet or Bell | Doni mamis<br>( <i>do ni ma mis</i> )    | <i>Capsicum annuum</i><br>(Grossum Group) |
| Pepper, Wild Chili    | Doni sali<br>( <i>do ni sa lee</i> )     | <i>Capsicum frutescens</i>                |
| Potato                | Batatas<br>( <i>ba ta tas</i> )          | <i>Solanum tuberosum</i>                  |
| Tomato                | Tomatis<br>( <i>to ma tis</i> )          | <i>Lycopersicon esculentum</i>            |

*Olaix Family**Olaixaceae*

|             |                           |                          |
|-------------|---------------------------|--------------------------|
| Sour Cherry | Piut<br>( <i>pee ut</i> ) | <i>Ximenia americana</i> |
|-------------|---------------------------|--------------------------|



## COMMON NAME

## CHAMORRO NAME

## BOTANICAL NAME

***Palm Family***

Betel-nut  
 Red flesh nut  
 White flesh nut  
 Chinese betel-nut

Coconut

Pugua (*pu gwa*)  
 Ugam (*u gam*)  
 Changnga (*chang nga*)  
 Pugua Cheena  
 (*pu gwa chee na*)  
 Niyog  
 (*nee jog*)

***Arecaceae***

*Areca catechu*

*Veitchia merrillii*

*Cocos nucifera*

***Pandanas/Screw Pine Family***

Spreading Plant/Large Fruits  
 (Broad thorny leaves-Nuts edible)  
 Tall Plant/Small Fruits  
 (Thin thorny leaves-Nuts  
 generally not eaten)  
 Textile Pandan  
 Spreading Plant/No Fruits  
 (Leaves used for weaving)  
 Small Plant/Small Fruits  
 (Leaves used as spice)

Pahong  
 (*pa hong*)  
 Kafu  
 (*ka fu*)  
 Aggag  
 (*ag gag*)  
 Fajao  
 (*fa jao*)

***Pandanaceae***

*Pandanus dubius*

*Pandanus fragrans*

A variety of *P. fragrans*

A variety of *P. fragrans*

***Parsley Family***

Carrot

Carrot

***Apiaceae***

*Dacus carota*

***Pasionaria/Granadilla Family***

Passion fruit

Passion fruit

***Passifloraceae***

*Passiflora edulis*

***Pepper Family***

Betel Pepper  
 (Betel-leaf)  
 Black Pepper

Pupulu  
 (*pu pu lu*)  
 Primenta  
 (*pree men ta*)

***Piperaceae***

*Piper beetle*

*Piper nigrum*

***Pineapple or Bromeliad Family***

Pineapple

Pina  
 (*pee na*)

***Bromeliaceae***

*Bromelia ananas*

***Pomegranate Family***

Pomegranate

Granada  
 (*gra na da*)

***Punicaceae***

*Punica granatum*



| COMMON NAME                | CHAMORRO NAME                          | BOTANICAL NAME                              |
|----------------------------|--|---|
| <b>Protea Family</b>       |  | <b>Proteaceae</b>                           |
| Macadamia                  | Macadamia                              | <i>Macadamia integrifolia</i>               |
| <b>Pulse or Pea Family</b> |  | <b>Fabaceae</b>                             |
| Cuamenchiti                | Kamachele<br>( <i>ka ma chee lee</i> ) | <i>Pithecellobium dulce</i>                 |
| Mungbean                   | Monggos<br>( <i>mong gus</i> )         | <i>Phaseolus radiata</i>                    |
| Peanut                     | Kakaguatis<br>( <i>ka ka gwa tis</i> ) | <i>Arachis hypogaea</i>                     |
| Pole Bean                  | Abuchuelas<br>( <i>a bu chwe las</i> ) | <i>Phaseolus vulgaris</i>                   |
| Tamarind                   | Kalamendo<br>( <i>ka la men do</i> )   | <i>Tamarindus indica</i>                    |
| Yam Bean                   | Hikamas<br>( <i>hi ka mas</i> )        | <i>Pachyrhizus erosus</i>                   |
| Yardlong Bean              | Friholis<br>( <i>fri ho lis</i> )      | <i>Vigna unguiculata sesquipedalis</i>      |
| Wingbean                   | Sigidiyas<br>( <i>si gi di jas</i> )   | <i>Psophocarpus tetragonolobus</i>          |
| <b>Sapinda Family</b>      |  | <b>Sapindaceae</b>                          |
| Longan                     | Longan                                 | <i>Euphoria longana</i>                     |
| Rambutan                   | Rambutan                               | <i>Nephelium lappaceum</i>                  |
| <b>Sapota Family</b>       |  | <b>Sapoaceae</b>                            |
| Chicle                     | Chiku<br>( <i>chee ku</i> )            | <i>Manilkara zapota</i>                     |
| <b>Spurge Family</b>       |  | <b>Euphorbiaceae</b>                        |
| Cassava                    | Mendioka<br>( <i>men di o ka</i> )     | <i>Manihot esculenta</i> <sup>13</sup>      |
| Tahitian Gooseberry        | Iba<br>( <i>E ba</i> )                 | <i>Phyllanthus acidus</i>                   |
| <b>Tacca Family</b>        |  | <b>Taccaceae</b>                            |
| Arrowroot                  | Gabgab<br>( <i>gab gab</i> )           | <i>Tacca leontopetaloides</i> <sup>14</sup> |
| <b>Tilia Family</b>        |  | <b>Tiliaceae</b>                            |
| Panama Cherry              | Mansanita<br>( <i>man sa nee ta</i> )  | <i>Muntingia calabura</i>                   |

| COMMON NAME | CHAMORRO NAME | BOTANICAL NAME |
|-------------|---------------|----------------|
|-------------|---------------|----------------|

**Vine Family**

**Vitaceae**

Grape

Ubas  
(u bas)

*Vitis rotundifolia*

**Wood-Sorrel Family**

**Oxalidaceae**

Pickle Tree

Pikul  
(pee kul)

*Averrhoa bilimbi*

Starfruit (Carambola)

Billimbini  
(be lem be nis)

*Averrhoa carambola*

**Yam Family**

**Dioscoreaceae**

Yam<sup>15</sup> (Round Stem)  
Globular tubers with  
white crumbly flesh

Dagun apaka  
(da gon a pa ka)

*Dioscorea rotundata*

Yam<sup>15</sup> (Winged Stem)  
Purplish flesh & skin  
with globular tubers

Dagun agaga  
(da gon a ga ga)

*Dioscorea alata*

Purplish flesh & skin  
with long tubers

Dagun Lulok  
(da gon lu luk)

White flesh & firm  
branched like tubers

Dagun haya  
(da gun ha ja)

Yam, Sphy  
Thorny vines and roots

Gadu  
(ga du)

*Dioscorea esculenta*  
var. *spinosa*

Yam, Wild  
Thorny vines

Nika  
(ni ka)

*Dioscorea esculenta*  
var. *fasciculata*



- 1 The *Alocasia* is primarily known as an ornamental species including the popular giant Elephant Ear. However, in the South Pacific, the parent corms or tubers of the edible varieties of *Alocasia* are important and economically significant.
- 2 *Cyrtosperma* is an economically important species in Micronesia. It is principally cultivated in wetland culture for consumption of the parent corm.
- 3 *Colocasia* includes dry and wet land varieties. The parent corm of the *Colocasia* is of principal interest in its cultivation. However, the leaves of most species are edible when processed into some form of spinach dish.
- 4 In Guam, the *Xanthosoma* is cultivated primarily for its side shoots or "sucker corms" rather than for the parent corm. Some new introductions are also grown for their leaves and petioles for preparation as a type of spinach.
- 5 The term "aga" means "ripe banana fruit." It is also used to distinguish dessert varieties from cooking varieties.
- 6 The origin of most eating varieties come from the species *Musa balbisiana* and the origin of most cooking varieties come from the species *Musa acuminata*. However, as a result of mutations and cross breeding occurrences between these two principal edible species, several varietal groups and subgroups of eating and cooking varieties have emerged. Thus, not all eating varieties are of the species *balbisiana* and not all the cooking varieties are of the species *acuminata*. In addition, there are numerous ornamental *Musa* plants.
- 7 Local name used primarily in the Northern Marianas.
- 8 The term "chotda" could mean either "banana plant" or "unripe banana fruit." It is also used to distinguish cooking varieties from dessert varieties. Cooking varieties are generally harvested and prepared when not fully ripe, thus, the term "chotda." However, cooking varieties may be prepared when fully ripe as well.
- 9 The term Kahet Magas is often used for both large fruited citrus; i.e. the Pomelo and the Grapefruit (*Citrus paradisi*). No other local term is known to distinguish between Pomelo and Grapefruit.
- 10 The term "helotis" implies corn with young and soft kernels, sweet corn or "corn-on-the-cob." The term "mais" is used for mature, hard kernels, and generally a term used to differentiate field corn from sweet corn.
- 11 The ornamental "leaf" asparagus grown locally is *A. plumosus*.
- 12 The root of the aroru can be milled into a fine starch.
- 13 Cassava root milled into flour is called tapioca.
- 14 Tubers of the gabgab are edible if processed into a fine starch.
- 15 The local name "Dagu" can be used to refer to all Round and Winged Stem Yams.

Bureau of Planning

Bureau of Planning

Issued in furtherance of the U.S. Cooperative Extension Work, Acts of May 8 and June 30, 1914 in cooperation with the Extension Service, United States Department of Agriculture (ES-USDA). Chin-tian Lee, Dean/Director, Guam Cooperative Extension, College of Agriculture and Life Sciences, University of Guam.

The Programs of the Guam Cooperative Extension, University of Guam are open to all regardless of age, race, color, national origin, religion, sex or disability.

V.T. Artero, F.J. Cruz and V.M. Santos are Extension agents with the Agriculture & Natural Resources unit of the Guam Cooperative Extension.

Special thanks to:  
CALS Media for layout and design

Printed August 1993