

Indian Botanic Garden Library
BOTANICAL SURVEY OF INDIA

CLASS No 505.....

BOOK No .*FLO-m*.....

ACC. NO.....*B/6/3*.....



THE
FLORAL MAGAZINE.
NEW SERIES.

THE
FLORAL MAGAZINE.

FIGURES AND DESCRIPTIONS
OF THE
CHOICEST NEW FLOWERS

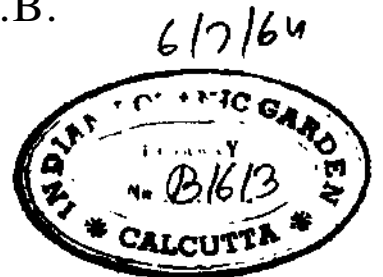
FOR THE
Garden, Stove or Exnshntaxrh

BY THE
REV. H. HONYWOOD DOMBHAİN, A.B.

HON. SEC. OF THE METROPOLITAN FLORAL SOCIETY.

THE DRAWINGS BY WORTHINGTON G. SMITH, F.L.S.

NEW SERIES.



LONDON:
L. REEVE & CO., 5, HENRIETTA STREET, COVENT GARDEN, W.C.
1873.

CONTENTS.

PLATE

49. Silver Tricolor Pelargonium—Mrs. Laing.
50. Picotees—Mrs. Hornby and Edith Dombain.
51. *Cypripedium Pardinum*.
52. *Cineraria maritima auvea marginata*.
53. *Maranta Makoyana*.
54. Pentstemons—Egerton Hubbard and W. H. Dalben
55. *Dahlia*—Arbitrator.
56. Pelargoniums—Countess and Duchess.
57. *Campanula*—Medium *Calycanthemum*.
58. Narcissi—*Tazetta-luna*, *Tazetta-intermedius* and *Juncifolius*.
59. *Primula Japonica*, vars. *carminatu* and *alba*.
60. *Weltia regia*.
61. *Hibiscus (Zasa sinensis) fulgidus*.
62. Bedding Violas and Pansies.
63. *Gladiolus*—Phoebus.
64. *Cattleya Trianse Dodgsonii*.
65. *Aphelandra nitens*.
66. *Vanda Cathcartii*.
67. Varieties of Primrose.
68. *Poinsettia pulcherrima rosea carminata*.
69. Hybrid Perpetual Rose. — Mons. Claude Levet.
70. *Liselia Harpophylla*.
71. *Camellia*—Princess Mary.

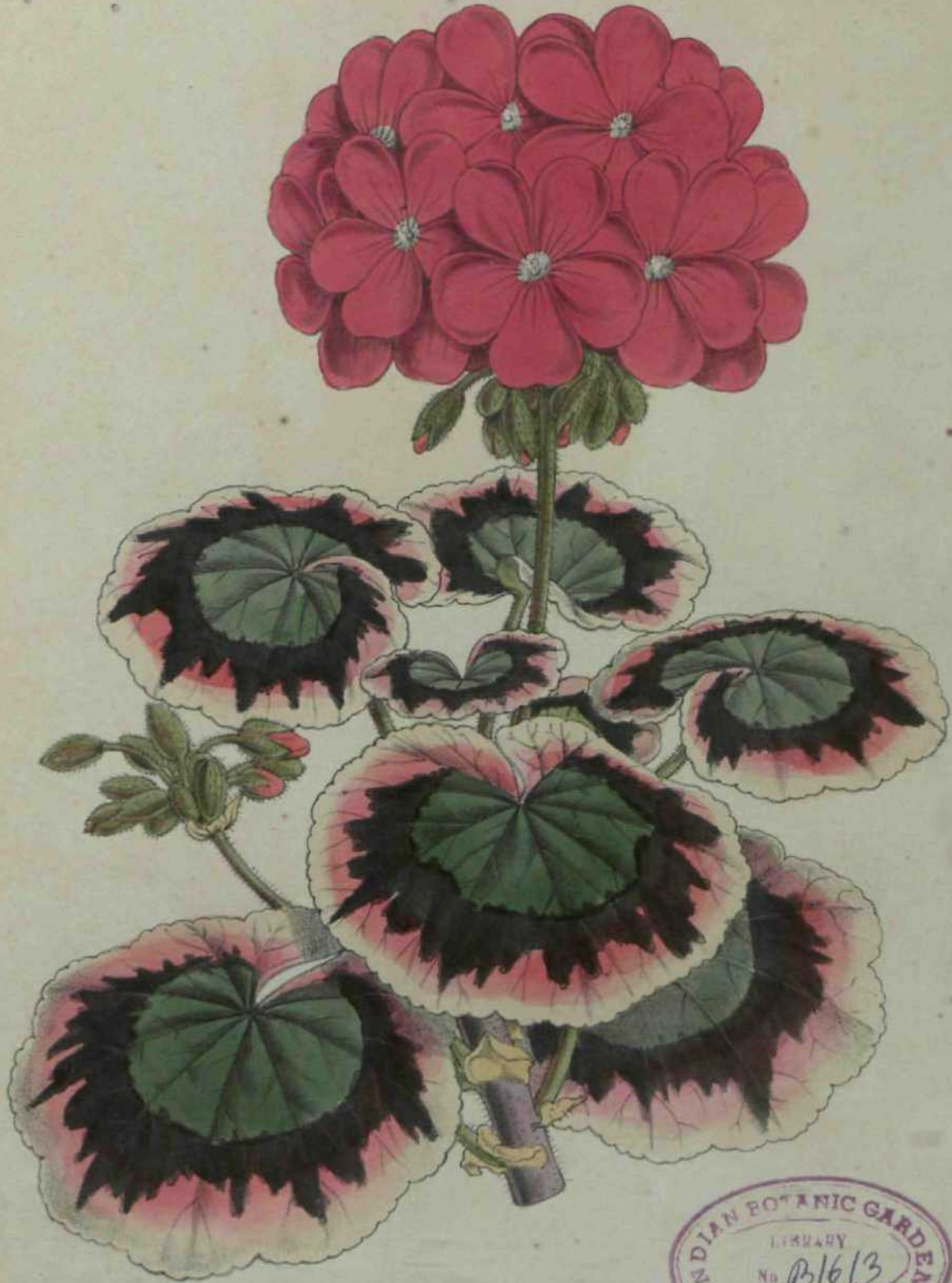
FLATS

72. Tricolor Pelargonium—Magdala.
73. *Odontoglossum vexillarium*.
74. *Dracajna splendens*.
75. *Auricula*—Charles Perry.
76. *Lilium Humboldtii*.
77. *Amaryllis*—Beauty of Reigate.
78. *Abutilon*—Boule de Neige.
79. *Masdevallia Denisoni*.
60. New Double-flowered Blue *Lobelia*.
81. Pelargoniums—Scottish Chieftain and Ruth.
82. *Lewisia rediviva*.
83. *Utricularia montana*.
84. *Silene pendula compacta*.
85. *Hibiscus (Rosa sinensis) puniceus*.
86. *Aristolochia floribunda*.
87. Carnations—Mars and Guardsman.
88. *Aquilegia chrysantha*.
89. *Tacsonia insignis*.
90. *Odontoglossum Roezlii*.
91. Varieties of *Babiana*.
92. *Auricula*—Charles E. Brown.
93. *Pescatoria cerina*.
94. *Camellia*—Eugene de Massina.
95. *Erythrina Parcelsii*.
96. Dwarf Narcissi.

Description of Plates.

INDEX TO PLANTS FIGURED.

	PLATE		PLATS
Abutilon—Boule de Neige	78	Narcissi, Dwarf—Minima and Minor	96
Amaryllis—Beauty of Reigate	77	Narcissi—Tazetta-luna, Tazetta-intermedius and Juncifolius	58
Aphelandra nitens	65		
Aquilegia chrysantha	88		
Aristolochia floribunda	86	Odontoglossum Roezlii	90
Auricula.—Charles Perry	75	Odontoglossum vexillarium	73
Auricula.—Charles E. Brown	92		
Babiana—varieties of	91	Pelargoniums—Scottish Chieftain and Huth	81
Camellia—Eugene de Massina	94	Pelargoniums, show—Countess and Duchess	56
Camellia—Princess Mary	71	Pelargonium, Silver Tricolor—Mrs. Laing	49
Campanula medium Calycanthema	57	Pelargonium, Tricolor—Magdala	72
Carnations—Mars and Guardsman	87	Pentstemons—Egerton Hubbard and W. H. Dalben	54
Cattleya—Trianae Dodgsonii	64	Pescatoria cerina	93
Cineraria maritima aurea marginata	52	Picotees—Mrs. Hornby and Edith Dom- brain	50
Cypripedium Pardinum	51	Poinsettia pulcherrima rosea carminata	68
Dahlia—Arbitrator	55	Primrose—varieties of	67
Dracaena splendens	74	Primula Japonica, vars. carminata and alba	59
Erythrina Parcelsii	95	Rose, hybrid perpetual—Mons. Claude Levet	69
Gladiolus—Phoebus	63	Silene pendula compacta	54
Hibiscus (<i>Rosa sinensis</i>) fulgidus	61	Tacsonia insignis	cig
Hibiscus (<i>Rosa sinensis</i>) puniceus	85	UOricularia montana	33
Lselia Harpophylla	70	Vanda Cathcartii	QQ
Lewisia Kedium	82	Violas and Pansies, bedding	02
Lilium Humboldtii	76		
Lobelia.—New double-flowered blue	80	Welfia regia	gq
Maranta Mikoyana	53		
Masdevallia Denisoni	79		



Wm. Smith Florist del et lith.

SILVER TRICOLOR PELARGONIUM.
"M^{rs} Irang"

V. Fowler Del. & Lith.



W.G. Smith FLS. Sc. et Lith.

CYPRIPEDIUM PARDINUM

V. Becket Day & Son. Imp.

FLORAL MAGAZINE. NEW SERIES

L. Reeve & Co. 6, Henrietta St., Covent Garden.



W.G. Smith, F.L.S. del et lith.

C *H* *E* *R* *A* *R* *I* *A* *M* *A* *R* *I* *T* *I* *M* *A* *a* *u* *r* *e* *a* *m* *a* *r* *i* *n* *a* *t* *a*

W. & A. G. & Son, Imp.

FLORAL MAGAZINE NEW SERIES

L. Reeve & Co. 5, Henrietta St. Covent Garden.



W. H. B. & Co. del.

MARANTA MAKOYANA. (Bull.)

V. Brooke Day & Son. Imp.



PENSTEMONS.

1 Egerton Hubbard.

2 W H D: lben.

W. H. D. lben. del. sculp.

V. Brooks Day & Son. Imp.

FLORAL MAGAZINE NEW SERIES.

L. Evans & Co. 11, Ranelagh St. Covent Garden.



W. G. Smith, FLS. del. et lith.

DAHLIA "ARBITRATOR."

V. Fooks Day & Son, Imp.

FLORAL MAGAZINE NEW SERIES

J. B. Rose & Co. Horticult. St. James's Garden.



W.G. Smith FLS. Del. et lith.

V. Brooks Day & Son. Imp.

PELARGONIUMS
 1. "Countess" 2. "Duchess".

FLORAL MAGAZINE NEW SERIES
 L. Reeve & Co. 5, Henrietta St. Covent Garden.



W.G. Smith, FLS. del. et. lith.

CAMPANULA MEDIUM CALYCANTHEMA.

V. Brooks, Day & Son, Imp.

FLORAL MAGAZINE. NEW SERIES.

L. Reeve & Co. 5, Henrietta, St. Covent Garden.



VARIETIES OF NARCISSUS.

- 1. *Narcissus tazetta-luna*
- 2. *Narcissus tazetta-intermedium*
- 3. *Narcissus jonquilla*

W.G. Smith, F.L.S., del. et lith.

V. Brooks, Day & Son, Imp.

FLORAL MAGAZINE NEW SERIES

L. Reeve & Co. & H. Bennett, St. Covent Garden.



W.G. Smith, F.L.S. del et lith.

VARIETIES OF PRIMULA JAPONICA

V. Brooks Day & Son, Imp.

1. Carminata.

2. Alba.

HIOEAL MAGAZINE UEW SEBIES

L. Reeve & Co. 5, Henrietta St. Covent Garden.



W.G. Smith, F.L.S. del et lith

W E ! F J A B E G I A .

V. Brooks, Day & Son, imp.

FLOKAL MAGAZINE NEW SERIES
L. Reeve & Co. 5, Henrietta, St. Covent Garden.



W.G. Smith, FLS. del. et lith.

V. Heywood, del. et lith.

HIBISCUS (rosa-sinensis) fulgidus

FLORAL MAGAZINE. NEW SERIES

L. Reeve & Co. 5, Henrietta St. Covent Garden.



BEDDING VIOLAS & PANSIES

W.G. Smith, F.L.S. del. et lith.

J. Hooker, Day & Son, Imp.

- | | | |
|--------------|-------------|-----------|
| 1. Regine | 2. Tory | 3. Clarct |
| 4. Snowflake | 5. Favorite | 6. Scotia |

FLORAL MAGAZINE, NEW SERIES
 J. Rivers & Co. 5, Henrietta St. Covent Garden.



W.G. Smith, F.L.S. del. et lith.

GLADIOLUS. (Phebus)

V. Brockle, Day & Son, Imp.

FLORAL MAGAZINE NEW SERIES.
L. Reeve & Co. S. Hammersmith, St. Cecily's Garden.



W.G. Smith, FLS. del et lith.

V. Brooks Day & Son, Imp.

CATTLEYA. Trianae-Dodgsonii.

FLORAL MAGAZINE NEW SERIES

L. Reeve & Co. Horticult. & Covent Garden



AP HE 1. ; U DRA NITENS.

W.G. Smith, F.L.S. del et lith.

V. Brockle, Day & Son, lith.



VAND; CATHCARTII.

V. Brooks, Day & Son, Imp.

W. G. Smith, F.L.S. del. et lith.



VARIETIES OF PRIMROSE

- 1 Violet Queen
- 2 Rosy morn
- 3 Magenta Queen
- 4 Primula OoTa.

W.G. Smith, F.L.S. del et lith.

V. Brocklebury & Sons, Imp.



POINSETTIA PULCHRA F. SRIMA rosea-carminata*

W.C. Smith, F.L.S. del. et lith.

v. Strook & Co. - tap

FLOEAL MA3AZIHE SW SEMES

L. Reeve & Co. 5, Henrietta St. Covent Garden



W.G. Smith, F.L.S. del. et. lit.

HYBRID PERPETUAL ROSE.
 Mons^r Claude Level.

V. Drevet, Day & Son, Imp.

FLORAL MAGAZINE, NEW SERIES

L. Reeve & Co. 5, HAZELTON, St. James's Garden.



W.G. Smith, F.L.S. del et lith.

V. Hooker, Day & Son, Imp.

LJEI\fi HARP. PHYLLA.

FLORAL MAGAZINE NEW SERIES
J. Rowe & Co. 11, Henrietta St. Covent Garden.



W.G.S. taitUuf^di lth.

V. Brooker, Day & Son, imp.

C A M E L L I A .
 "Princess Mary"

FLORAL MAGAZINE NEW SERIES
 L. Reeve & Co. 5, Henrietta St. Covent Garden.



W.G. Smith, F.L.S. del. et lith.

TRICOLOR PELARGONIUM

V. Brooks Day & Son, Imp.

"Magdala"

FIOCAL MA9AZINE NEW SEBIES.
LBw. & Co. & H. mietta ScCbnD&(nadaa



P. G. Smith FLS. del et lith.

V. Brocke Day & Son. Imp.

PHALANOPSIS VEXILLARUM

FLOREAL MAGAZINE NEW SERIES

L. Reeve & Co. S. Hertford. S. Garden.



DE ACÆNA SPLENDENS.

W.C. Smith, F.L.S. del et lith.

V. Brooks Day & Son, Linc.

FLOREAL MAGAZINE NEW SERIES
L. Reeve & Co. 5, Henrietta St. Covent Garden.



W.C. Smith, F.L.S. del et lith

V. Brook & Day & Son. Imp.

AURICULA,
"Charles Peiry"

FLORAL MAGAZINE NEW SERIES
L. Reeve & Co. 5, Henrietta, St. Covent Garden.



ME tr:

W.G. Smith, F.L.S. del et lith.

V. Brocke, Day & Son, Imp.

LILIUM HUMBOLDTII
latum.

"Mac

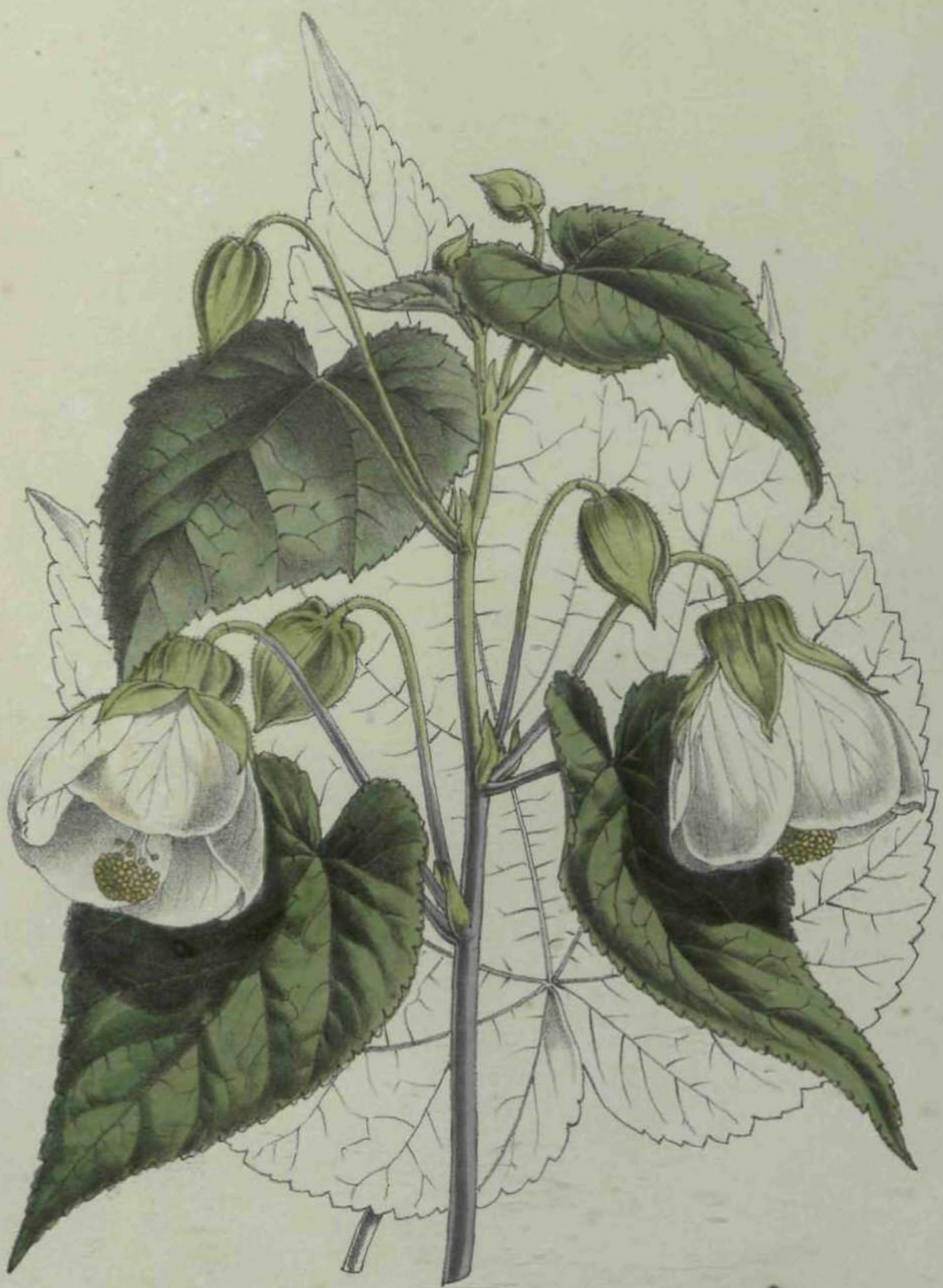


W.G. Smith, F.L.S. del. et lith.

V. Brooks, Day & Son, Imp.

AMARYLLIS.
"Beautili Reigate"

FLORAL MAGAZINE NEW SERIES
L. Reeve & Co. 5, Henrietta St. Covent Garden.



W.G. Smith, PLS., et lith.

V. Everts, Degré & Son, Imp.

A B U T : L O N
"Boute de neige"

FLORAL MAGAZINE, NEW SERIES
L. Reeve & Co. 15, Henrietta St. Covent C.



W.G. Smith, F.L.S. del. et lith.

W. & A. G. Day & Son, Imp.

MASDEVALLIA DENISONI.

FLOREAL MAGAZINE NEW SERIES

LStr- 1842, 5, Hammersmith, St. George's Garden.



NEW DOUBLE-FLOWERED DWARF BLUE LOBELIA

W. G. Smith, FLS. del et lith.

V. Brooks Day & Son, Imp.

FLORAL MAGAZINE THE NEW SERIES

L. Reeve & Co 5 Henrietta St. C.



PELARGONI UHS.

W.G. Smith, F.L.S. del et lith.

1. "Scottish Chirita m"

2. "Ruth"

V. Brocks Day & Co. Imp

FLQV • I. MAGAZINE NEW SERIES.

:Co. 5, Henrietta, St. Covent Garden.



LEWISIA REDIVIVA

W.G. Smith, F.L.S. del et lith.

V. Brooks, Day & Son, Imp.

FLORAL MAGAZINE NOT SERIE?

L. Pease & Co. 5 Hazmatia St. Covent Garden.



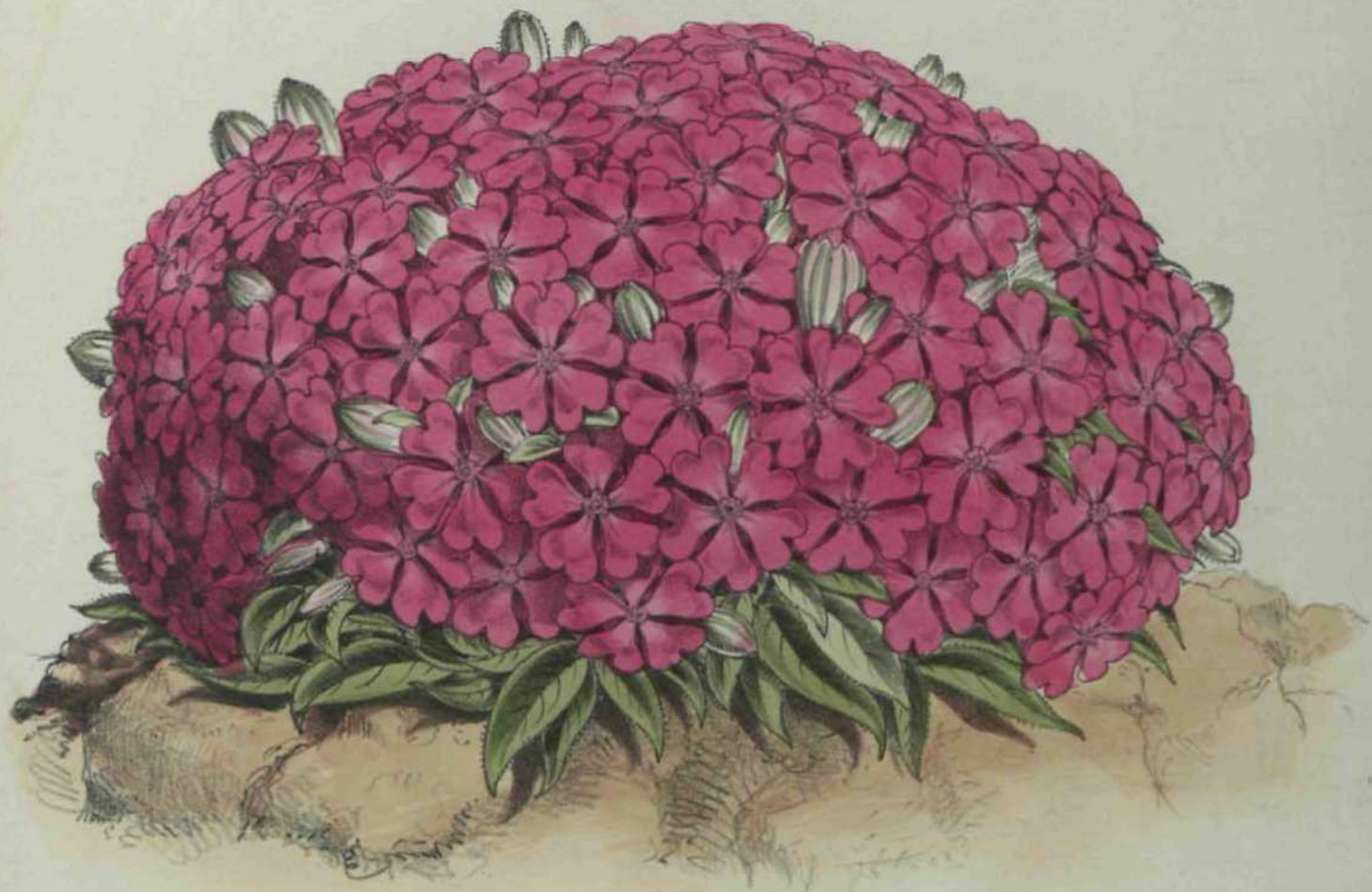
W.G. Smith, F.L.S. del. et lit.

V. Brooke Day & Son, Imp.

U T R I C U L A R I A M O N T A N A

FLOEAL MAGAZINE MEW SEBIES

L. Rowe & Co. 5, Henrietta St. Covent Garden.



S I L E N E P E W D U L A C O M P A C T A

W.G.Smith.FLS.del. rtlith.

V.Hooks.Dry & Son.Limp.



HIBISCUS (*rosa-sinensis*) PUNICEUS.

W.G. Smith FLS. i. l. et lith.

V. Brooks Day & Son Imp.



ARISTOLOCHIA FLORIBUNDA.

W.C. Smith, F.L.S. del. et lith.

V. Brooks Day & Son, Imp.

FLORAL MAGAZINE am. SERIES

L. Reeve & Co. 5, Henrietta, St. James's Garden.



W.G. Smith, FLS. del et lith.

NEW CAR'NATIONS
1 Mars. 2. Guardsman

V. Brooks, Day & Son, Imp.

FLORAL MAGAZINE [THE KEW SERIES]
L. Reeve & Co. 5, Henrietta, St. James's Garden.



AQUILEGIA CHRYSANTHA,
 (Aquilegia leptocera - var. lutea)

W.G. Smith, FLS & Co. Lith.

V. Brooks, Day & Son, Imp.

FLORAL MAGAZINE 8EF SERIES

L. Reeve & Co. 5, Henrietta St. Covent Garden.



W.G. Smith, F.L.S. del. et lith.

TACSONIA INSIGNIS.

V. Brooks, Day & Son, Imp.

FLO. O. MAGAZINE HI^W SERIES.

L. Reeve & Co. & Henrie J. Gardiner



W.G. Smith, F.L.S. del et lith.

V. Brooks, Day & Son, Imp.

ODONTOGLOSSUM ROEZLIi.

aOEAL MBSAZIKI NEW SEBI^{ES}

L. Rowe & Co. of Henrietta, St. Count. Ga. -i-n



W.G. Smith, FLS del et lith.

V. Brooks, Day & Son, Imp.

B A B I A N A S . .

- 1. *Cadia*
- 2. *Atro-cyanea*
- 3. *Angustifolia*
- 4. *Lad-Cary*

FLOREAL MAGAZINE NEW SERIES.

L. Reeve & Co. 5, Henrietta St. Great Garden.



W.G. Smith, F.L.S. del et lith.

A 1 R I C U L A.

V. Brooks, Day & Son, Imp.

"C. E. BTOWH"

FLOEAL M&C-AZWE NEW SERIES.

L. Reeve & Co. 5, Henrietta, St. Covent Garden.



PE SCATORIA CERINA.

W.G. Smith, F.L.S. del et lith.

V. Hooker, Day & Son, Imp.

FLORAL MAGAZINE, NEW SERIES.

L. Reeve & Co., 5, Hammersmith, St. Covent Garden.



W.G. Smith, F.L.S. del et lith.

C A M E L L I A .
"Eugene de Massina"

V. Fowler, Day & Son, Imp.

FLORAL MAGAZINE, NEW SERIES.
L. Reeve & Co. Lithographers, Covent Garden.



ERYTHRINA PARCELSII

V. Beckler Del. & Sculp.

W. G. Smith, FLS. del. et lith.

FLORAL MAGAZINE NEW SERIES
L. Davis & Co. 1, West 12th St. New York, N.Y.



W.G. Smith, F.L.S. del. et lith.

DWARF NARCISSEI.

V. Brooks Day & Son, Imp.

1. N. Minima. 2. N. Minor.

FLORAL MAGAZINE, NEW SERIES.

L. Reece & Co. Edinburgh, Pr. James Watson.

PLATE 49.

SILVER TRICOLOR PELARGONIUM—MRS. LAING.

Although it is probable that the "furore" for tricolor-leaved pelargoniums has reached its climax, and that we shall never again see such prices given for them as have been given during the past few years, yet are there sometimes novelties of such sterling character that they at once claim our attention and assert for themselves a prominent position. "We have seen this season some golden tricolors, which are exceedingly brilliant and promising, and in the variety now figured in the silver tricolor class we have one far in advance of any of its predecessors.

Mrs. Laing is a free-growing compactly-habited plant of vigorous constitution and highly-coloured foliage; the leaves are of fair average size and good substance, standing the sun well, round and flat, with a well-defined silver margin, a rich deep-green centre encircled with a well-defined zone of a fine dark colour, widely bordered with rich carmine, and is decidedly the highest coloured variety yet seen in this class. It obtained the first prize at the Birmingham Show of the Royal Horticultural Society, as the best silver tricolor pelargonium, and the first prize in the same class at the Special Pelargonium Show of the Royal Horticultural Society in August last, held at South Kensington, and has been awarded first-class certificates by the Royal Horticultural and Royal Botanic Societies.

There is not much likelihood of such varieties as *Mrs. Laing* being used for bedding purposes, but as a conservatory or greenhouse plant it will be very valuable. There is no doubt, that however well these plants stand exposure, yet they succeed vastly better where a moderate amount of heat can be given to them during the winter months.

PLATE 50.

PICOTEES—MRS. HORNBY AND EDITH DOMBRAIN.

Those who persistently deny that any improvement has taken place in the Picotee of late years, must have had their minds disabused in looking at the beautiful stands exhibited in the past season both at the Crystal Palace and South Kensington by our champion grower, Mr. Charles Turner of Slough, and it may be adduced, as a proof of their excellence, that eight first-class certificates were awarded to them. These were all, with one exception, exhibited by Mr. Turner, and raised by him or the Rev. C. Fellowes of Shottisham Rectory, Norfolk, to whom we are indebted for many very valuable flowers.

Edith Dombain (fig. 1) is a very distinct flower, the heavy pinkish-rose edging being quite unlike any oilier variety that we possess; the colour does not break off into bars, but is entirely confined to the edge. *Mrs. Hornby* (fig. 2) is one of the light red-edged flowers, and although similar in colour to many which have preceded it, is very large and pure in colour. The other flowers which have received first-class certificates are: *Ethel*, *Mrs. Alhrofl*, *Jakarta*, *J. B. Bryant*, *Norfolk Beauty*, *Princess of Wales*, and *Mrs. Little*, exhibited by Mr. Hooper of Bath.

The remarkable season that we have had has affected the growth of Picotees as well as other things; it has been found very difficult to strike them, and one of our largest growers informs us, that he could not get his layers to strike, and has been obliged to put them under glass, so as to induce them to emit roots, the continual autumnal rains and the low temperature being very much against them.

PLATE 51.

OYPRIPEDIUM PARDINUM.

Although this family of Orchids does not contain plants of such gorgeous colouring or such delicate perfume as many others, yet the singularity of their forms, and the ease with which they are cultivated, have made them as widely and generally grown as any of this very numerous race; in all, whether it be our native species, or the singularly tailed exotics, some of which we have figured in former numbers of the Magazine, the distinctive feature for which the name of *Ladies' Slipper* has been given, viz the curiously-formed labellum, is preserved.

We are indebted to Mr. William Bull for the opportunity of figuring this recent addition to the genus, it having been imported by him from the East Indies, and exhibited at the Royal Horticultural Society of London, it will be seen that the foliage is spotted, thus giving us in *Cypripedium* what we already have in *Phalanopsis*—variegated leaves, the flowers are singularly marked, the sepals being tipped with mauve, and spotted with small round spots of brownish crimson, the tip is light green with darker veins, the edges being mauve of the same shade as on the sepals, and the upper portion towards the throat yellowish orange; the footstalks are of a lighter shade of mauve. It will thus be seen that there is a remarkable combination of colour in it, and although not very brilliant, the whole appearance of the flower is singularly attractive.

As it is a native of the East Indies, it will require the temperature of a warm stove.

PLATE 52.

CINERARIA MARITIMA—AUREA MARGINATA.

Cineraria maritima has for a long time been considered, by all who have to manage gardens in which bedding-out is carried on, as a most valuable plant, its beautifully silvery-white appearance and graceful foliage contrasting admirably with, some of the deep-coloured leaves which are so abundantly used; for instance, what a beautiful contrast it forms with *Iresine Lindeirii*, or *Coleus Verchaffeltii*, while in the mixed border clumps of it kept within bounds form a pleasant feature. In arranging flowers for a dinner-table we have found some of the smaller leaves very useful.

The plant which we now figure, *Cineraria maritima aurea marginata*, has been obtained by Mr. Drummond, foreman to Mr. Sampson, nurseryman, Yeovil, and has been fixed by him. We have elsewhere seen the plant sporting out into diversities like the present, but when they were grown on they gradually lost their character, and returned either to its normal condition or became quite green. One of this character we saw lately in a nursery near London; but with Mr. Sampson the marking has become permanently fixed, and we can readily believe what he states, when he says it has excited the admiration of all who have seen it.

Mr. Sampson's establishment is well known throughout the West of England for the excellence of its bedding plants, and we are sure that this very beautiful plant, which he purposes distributing next May, will be regarded as a valuable addition to our list of bedding plants.

PLATE 53.

MARANTA MAROYANA.

Among what are ordinarily called stove-foliaged plants there is no class more generally grown than the Marantas, and of late years many remarkably fine * varieties have been introduced, through the exertions of collectors sent out by Mr. Linden and others. Amongst the most beautiful we must notice *Mosea picta*, *illuslris*, and *Veitchii*; while as a proof that there are yet many more to be added to our list, we may state that during the past year no less than nine species have been either figured or introduced.

Maranta Makoyana has also been exhibited under the name of *M. Olivaris*; but as the former name was that under which it was first described by Professor Edouard Morren, and named by him after M. Makoy of Liege, it has, according to the laws of etiquette which regulate botanical nomenclature, retained the former name. It is of a very elegant dwarf habit, something in the way of *M. Feitc/iii*, but much smaller; the leaves are on slender erect stalks, oblong, blunt, unequal sided, ornamented from the midrib to nearly the margin with oblong patches of dark-green on a greyish-creamy striated ground. It is a native of South America, from whence we believe all the species as yet known have come.

It requires the ordinary treatment of stove-plants, and will prove, we believe, like its congeners, a plant of easy cultivation; while its dwarf character will give it an additional charm in the eyes of many lovers of stove-plants.

PLATE 54.

PENTSTEMONS—EGERTON HUBBARD AND W. H. DALBEN,

A reference to our former plates of this fine herbaceous plant will show at once how great a difference there is between those and the varieties we now figure, not so much in the colours of the flowers as in the habit of the plants; for whereas formerly the habit was long and the flowers were pendulous, we are now getting plants with a more branching character of growth and with flowers more erect. We cannot but consider this a great improvement, and it will make the flowers much more useful for cutting. This improvement is due to the firm of Downie, Laird and Laing, of Stanstead Park Nursery, and Edinburgh, who have for so many years carried on its cultivation, and who in their more extended nursery grounds at the former place are enabled to give greater space to the culture of those florists' flowers for which they have been long famous.

The culture of the Pentstemon is very simple; it does not always stand over the winter, and therefore it is better to keep up the stock of good varieties by striking cuttings in the autumn, keeping them in a cold frame during the winter, and then turning them out in the spring. Many, however, having once obtained a good strain, will be satisfied with raising seedlings every year, as they seed freely, and the young plants grow most vigorously.

The varieties now figured are selected from a number which Messrs. Downie, Laird and Laing intend to send out this spring. *Egerton Hubbard* is deep reddish purple with a clear white throat, and *W. H. Dalben* is bright magenta with dark centre. The flowers in both instances are of good size, while their erect character gives them a much neater and compact appearance than when the flowers are pendulous.

PLATE 55.

DAHLIA ARBITRATOR.

The popularity of the Dahlia, which was for a time in much jeopardy owing to the introduction of BO many horticultural novelties in other directions, has most sensibly revived during the past two or three years,—and if we may take the number of certificates that have been awarded to new kinds during the past season as any test of merit, we cannot but conclude that the charge that no advance has been made was utterly unfounded, for although the number of certificates has not been quite equal to those awarded to Pelargoniums, yet upwards of twenty have received them. That all these are first-rate flowers we can hardly believe, and we are not sorry to find that attention has been drawn to the very lavish hand with which they have been given, for we feel convinced it must occasion disappointment hereafter to the purchaser.

Messrs. Keynes, Turner, and Echford, have been the principal growers to whom certificates have been awarded; and we have selected one of Mr. Turner's flowers for our illustration. *Arbitrator* is a flower of large size and of good build, indeed, the great depth of many of these new flowers is remarkable, and nothing struck us more at the Metropolitan Society's Show at the Crystal Palace in August last, than the very superior form of most of the flowers in the winning stands. The colour of *Arbitrator* is fawn, suffused or shot with purple, with yellow at the base of each petal, it will give a pleasing contrast on a stand owing to the softness of its colouring. Amongst the other remarkable flowers to be sent out this spring is *Laura Uslam*, which has received no less than seven certificates.

PLATE 56.

SHOW PELARGONIUMS—COUNTESS AND DUCHESS.

If we may judge from the number of certificates which have been awarded to varieties of the Show Pelargonium during the past season, it must have been an exceptionally good one, for we find that no fewer than thirty were so honoured; and although the name of Mr. Hoyle no longer appears as a raiser, it is evident that the improvement which has taken place in Mr. Foster's strain will quite compensate for the loss sustained through Mr. Hoyle's death, for all the varieties which have been awarded certificates came from Glewer Manor.

Of those now figured. *Countess* (fig. 1), is somewhat distinct in colour; the pale pink of the lower petals being unusual; the top is maroon, shaded off to deep orange rose, the edge pale lilac, and with a clear white eye, the whole appearance of the flower is remarkably bold. *Due/teas* (fig. 2), affords a good contrast to the preceding, being a rich dark flower, lower petals crimson veined with a darker shade, the top petals intense deep maroon, almost black, with a narrow edge of bright crimson and clear white eye. Both have been awarded first-class certificates.

Mr. Turner of Slough has as usual the distribution of the Glewer seedlings; and besides those figured there are, *Brilliant*, *Blue Bell*, *Chieftain*, *Conquest*, *Druid*, *Emperor William*, *Flora*, *Great Mogul*, *I fero*, *Highland Lassie*, *Jubilee*, *Kittig Charles*, *Lord Byron*, *Mabel*, *Monarch*, *Othello*, *Purple Gem*, *Prince of Wales*, *Prince Arthur*, *Ruth*, *Itobm Hood*, *Superb*, *Syren*, *Scottish Chieftain*, *Victory*, *Charles Dickens*, and *Prince Bismarck*, and certainly never in any one season has BO promising a set been offered to the cultivator.

PLATE 57.

CAMPANULA MEDIUM CALYCANTHEMA.

Among hardy biennials, the Canterbury-bell, as the *Campanula* is called, has for a long time been a favourite, and the variety which we now figure, cultivated by Messrs. Waito, Burnell and Co., of Southwark Street, is likely to increase still further its popularity.

Some species of the *Campanula* present forms of duplication, but entirely different to that which we now figure. In them the bell-shaped form is almost destroyed by the confused mass of petals which fill up the flower; but, as a reference to our plate will show, in this case the corolla is much larger, and the calyx in addition is enlarged to nearly four inches in diameter, presenting the form of a saucer, and changed from its ordinary green colour into the same hue as that of the corolla.

It will be at once seen that, while this adds to the size of the flower, it also adds to its attractiveness, presenting a greater mass of colour of that delicate blue which makes the Canterbury-bell so great a favourite.

The treatment of hardy biennials is very simple. They are easily grown from seed, any ordinary garden soil suits them, nor is the *Campanula* unpleasing as a pot plant. We have seen many very handsome-looking specimens in cottidge windows in our neighbourhood, and it makes in a large conservatory a variety, and that in a colour not very frequent amongst flowers.

Messrs. "Yvaite and Co. have a white variety of the same character.

PLATE 58.

**NARCISSUS TAZETTA-LUNA—TAZETTA-INTERMEDIUS—
AND JUNCIFOLIUS.**

Amongst the oldest and most favourite of our spring flowers the *Daflbdil* has always held a place, and although of late years it, like many other things, has had to give way to the modern system of gardening, we hope better days are in store for it. In order to give a little impetus to its growth, we have given an illustration of three varieties, and hope to add others at some future time.

Mr. Barr, of the firm of Barr and Sugden, has given for years a thoughtful consideration to this family, and during last year exhibited at the Fortnightly Meeting of the Royal Horticultural Society, for nearly three months, groups of the various *Narcissi* as they came into bloom. Surprise at their beauty and variety was freely expressed, and we may add that they are amongst the earliest and latest of spring flowers, commencing with the Trumpet varieties in February, and terminating with the double *Poeticus* in June. From Mr. Barr's valuable catalogue may be obtained much excellent information, both as to the scientific grouping of the bulbs, and also the mode of cultivation. Suffice it to any, who has adopted Mr. Baker's (of Kew) classification, dividing them into three groups, with subdivisions.

Of those now figured, two—*Tazetta-luna* and *Tazetta-intennedius*—belong to the parvi-coronata section; and one—*Junci-olius*, a native of Como—to the medio-coronata section; and as a rule we may add, that they flourish best where they are slightly shaded from the midday sun. In all other respects they will submit to any ordinary garden treatment.

PLATE 59.

PRIMULA JAPONICA, VABS. CARMINATA AND ALBA.

This queen of primroses has received, as most good things do, a vast amount of praise, while, as is always the case, it has not been without its detractors. Some have said that it does not produce its whorls so much in bloom together as has been asserted; but we have ourselves seen it in the greatest perfection, while we have met with those who have assured us that they have had it with four whorls in bloom at the same time.

Not the least pleasing thing about it, is the number of varieties that it contains, and that these varieties are produced true from seed. We have already figured that which is regarded as the nominal colour of the flower—a bright magenta, and also the variety called *hlacina*, which as its name implies is of a delicate lilac shade: we now figure two others which Mr. Bull has had the kindness to send us, and we believe they will be appreciated as a welcome addition to those already figured.

Primula Japonica carminata is of a very bright rosy carmine shade, and is of the same habit as those already figured, although there may be detected, perhaps, some slight difference in the foliage. *P. Japonica alba*, is a pure white, and for that reason will be much valued. As the original variety is so widely distributed, we need say nothing more in its favour, and we are confident the varieties of it we now figure will be quite as popular as their predecessors.

PLATE 60.

WELFIA REGIA.

Palms are beginning to assert their claims to that position amongst horticulturists in England, that they have long held amongst our neighbours on the Continent, where their very graceful and varied forms, and their fresh colour, have long made them favourites amongst all who rely on elegance of structure for decorative purposes. Whether in the stove or the greenhouse, there are many forms of surpassing beauty which, especially in the young state, are extremely attractive.

Mr. W. Pull, of King's Boad, Chelsea, with that appreciation of the wants of the day which characterizes him, has introduced from the Continent several very handsome species, and amongst them that which we now figure, *Welfia regia*. It is a very distinct and beautiful Stove Palm, recently named by Mr. Wendland, and is thus described by Mr. Bull in his catalogue:—The stipes are smooth and slender, supporting a handsome bilobed leaf, which is parted almost down to the base into a pair of oblong acuminate lobes. The fresh leaves are of a pleasing bronzy hue, which adds much to the beauty of the plant in a young state. Sometimes these leaves are much more red than at others, becoming more and more bronzy as they advance in age. It has been exhibited at several meetings of the Royal Horticultural Society, and has received a first-class certificate from the Floral Committee of that Society.

PLATE 61.

HIBISCUS (ROSA-SINENSIS) FULGIDUS.

"We have already figured some remarkable varieties of these handsome stove shrubs, which have lately been introduced by Mr. William Bull, of King's Road, Chelsea, and we now add another, which is worthy of a place alongside of those previously given.

Mr. Bull thus describes this handsome Hibiscus :—" This magnificent variety, which was obtained from the South Sea Islands, is remarkable alike for the size, colour, and marking of its brilliant flowers. The leaves are broadly ovate, with coarsely serrated margins. The flowers are of a very large size (five inches in diameter), composed of fine broad rounded and beautifully undulated petals of an intense crimson scarlet, paler and somewhat rose-tinted towards the base, where on each petal is an oblong blotch of deep crimson, forming a blunt-rayed star in the centre of the flower. It is one of the finest varieties yet introduced." Besides this fine variety, Mr. Bull has two other species which are being sent out this spring along with *Hibiscus fulgidus*—one, *Hibiscus r. s. cruenlus*, is described as having flowers close and double, of a remarkably rich crimson red, and the contour of the individual flowers finely modelled; the other, *Hibiscus r. s. puniceus*, is described as having double flowers remarkably neat and compact, of a remarkably bright dense crimson colour and about three inches across, and the wavy petalline bodies which form the close centre are about two inches in depth, and have a very elegantly crisped appearance.

By those who have space at their disposal these elegant and brilliant stove plants will be highly prized, both for the freshness of their foliage and the brilliancy of their flowers,

PLATE 62.

BEDDING VIOLAS AND PANSIES.

We gave in our last volume a group of the bedding Violas and Pansies raised by Messrs. Dickson and Co., of Waterloo Place, Edinburgh ; and we now complete our series by the addition of another group, of which the raisers say, for several years those have been tested in the open ground, and from April to October they have continued to bloom with the greatest profusion, unaffected either by the severe frosts and cutting winds of spring, or the scorching weather in summer. They have continued to grow and bloom freely when *V. cornuta* and Pansies were killed close beside them by the drought. From their dwarf dense branching habit, their hardy constitution, and their invaluable property of continuous flowering from Spring to Autumn, they are sure to take a prominent place amongst bedding-out plants, whilst the delicate softness and variety of their colours will form a pleasing contrast to some of their more gaudy companions.

Of the six now figured, three are bedding Pansies and three Violas. *Begina* (Fig. 1), is a white bedding Pansy, of good substance, with orange eye, and dark purple blotch. *Claret* (Fig. 3), ground colour distinctly shaded with claret, small orange eye, and flowers of great substance. *Scotia* (Fig. 6), is of a clear azure blue, with distinct yellow eye. The bedding Violas are—*Tory* (Fig. 2), deep plum with dark blotch, flowers of great substance, distinct colour, and good grower. *Snowflake* (Fig. 4), clear waxy white, slightly pencilled, the flowers are very thick and leathery, and the plant is a profuse bloomer; and *Favourite* (Fig. 5), bluish purple, of good substance, golden eye, surrounded by a dark disk, of dwarf and compact habit. They are all evidently sturdy in growth, and will, we are convinced, become general favourites with those who cultivate these flowers.

PLATE 63.

GLADIOLUS—PH(EBUS.

As probably no colour is more appreciated in this lovely tribe of plants than scarlet, although no colour is so difficult to reproduce in a drawing, we have selected this, which we regard as the finest variety of last season, for our illustration. It is another of M Souchet's seedlings, and when shown to us at Fontainebleau, in the autumn of 1871, was regarded by him as the finest flower he had yet raised.

One great point to be sought after in a good florists' flower is substance, one great advantage being the length of time which a stout flower remains in bloom, in consequence of its being able to resist the influence of wind and sun, and this *Phtebua* possesses in a remarkable degree, while its intensely dazzling colour will be sure to commend it to all Gladiolus growers.

To those who are exhibitors *Phabus* has one disadvantage, at least at present it appears to have it—viz, its very late blowing; but we are not at all sure that this will continue to be its character, for in some other instances we have found that flowers alter in this respect; for example, *Meyerbeer* has been generally considered one of the very latest bloomers, but we have had it during the last season in flower for our earliest Shows in August, as well as for the later Exhibitions in September, and possibly this may be the case with *Phoebus*; but we are sure of this, that under any circumstances those who admire brilliancy of colour cannot fail to be pleased with it, while we may add, that as far as our experience goes, its habit is very robust, and it more rapidly increases than many other varieties.

PLATE 64.

CATTLEYA—TRIANE-DODGSONII.

Cattleya Trianee, like *Odontoglossum crispum*, is of a very protean character, but amongst the great number of forms which, says Mr. Williams of Holloway, "have bloomed in our collection, the present one is without doubt the very finest that has come under our notice." It bloomed in the month of January last in the rich collection of R. J. B. Dodgson, Esq., Beardwood, Blackburn, who is one of the most enthusiastic lovers of plants in general, and of Orchids in particular, the north of England can boast of, and therefore it has been dedicated to him.

Although many of the varieties of *Cattleya Trianae* fall far short of the variety now figured, yet they have a peculiar charm which renders them deserving of the attention of lovers of this fine tribe of plants; especially as they thrive well in a cool house, and produce their flowers during the dull and dreary days of winter when flowers are so acceptable. As it is a native of New Grenada it should be grown in a comparatively cool house; and although it will succeed well on a block, it will thrive far better under pot culture; the drainage must be perfect, and the soil should be good fibrous peat, sphagnum moss, and a little silver sand. During the flowering season they enjoy copious supplies of water to their roots, but we have not found its application to the foliage advantageous, because it is apt to lie in the sheaths of the young growths and cause decay. After the growth is complete water may be entirely withheld, giving a little occasionally, just to prevent any of the leaves or pseudo-buds from shrivelling, for when this takes place it is proof that the drying off or resting has been carried to extremes.

APHELANDRA NITERS.

Those who are happy in the possession of stoves, can secure during the drearier months of the year many a bright and fragrant flower, which is far more valuable than at other times of the year—we do not mean what are called forced flowers, but those which bloom naturally at that season. Orchids furnish an abundant supply, and amongst the Acanthaceaj, we find a good many bright and free-flowering plants which are of great value. The genus *Aphelandra* especially has many fine plants, one of which we figured in our former series, and now add another from the collection of Messrs. Veitch and Sons, of Chelsea.

Aphelandra niens is of recent introduction, and was imported from Guayaquil. It grows between two and three feet high, and is distinguished by the bright, glossy character of its dark green leaves, which are about six inches long and ovate, while the erect terminal flower spikes are four angled, and the individual flowers are very large and of a very bright scarlet colour. There are several others of nearly equal beauty to these, such, as *A. aurantiaca*, *A. cristata*, *A. Liboniana*; while *A. Hocsli* will be perhaps considered by many the most beautiful of the whole tribe. They require to be grown in a mixture of two parts light loam, one part peat, one part sand, and to be placed in a temperature of from 55° to 75°. They also require to be well drained, and to be abundantly watered until the flower-buds appear, while especial care should be taken to keep them clear of insects, which sadly disfigure both leaves and flowers.

— — —

VANDA CATHCARTII.

Among the various families of Orchids there is not one which comprises nobler-looking plants than that of *Vanda*; and however beautiful other species of the family may be, most persons would give the palm to the very beautiful one which we now figure; and although not a new plant, having been discovered by Dr. Hooker in 1848, and figured in the *Botanical Magazine* of 1870, its rarity and beauty both entitle it to the place we have given it in a record of new and beautiful flowers.

It is stated by its discoverer to be a native of hot, damp, shady valleys in the Eastern Himalaya, delighting in the neighbourhood of waterfalls, where it is exposed to constant humidity; and hence in their treatment it is necessary to give them constant care as regards moisture: they require frequent watering during the growing season. They should never be allowed to become dry, not even during their season of rest. "They should," says Mr. Williams, in his 'Orchid Grower's Manual,' in speaking of *Aerides*, which requires the same treatment, "be kept perfectly free from insects, especially the different kinds of scale. There is a small kind in particular which is apt to infest them, and which if allowed to increase will speedily make the plants look yellow and unhealthy; it may be kept under by washing with warm water and soft soap, applied with a sponge and left on the leaves for some twenty-four hours, when all remains of the soap should be removed with clean water."

The specimen from whence our figure was taken was flowered and exhibited by Messrs. Veitch and Son, of King's Road, Chelsea; it has also flowered in the collection of Mr. Stead, of Baildon, near Leeds, and in those of other growers of Orchids, the difficulties of culture having been overcome by the skill and perseverance of our horticulturists.

PLATE 67.

VARIETIES OF PRIMROSE.

Early spring flowers are now deservedly attracting a good deal of attention, and efforts are being made in various directions to improve their quality, for they become thus more valuable for decorative purposes. Amongst those which have been thus treated, our old garden favourite the Primula has come in for its share of attention. Mr. Richard Dean, of Ealing, has been very successful; three of the varieties figured in our plate have been raised by him, and we are also indebted to him for the following notes:—"The three figured are seedlings from *Primula vulgaris auricula/lora*, fertilized by other flowers of mauve hues, with a view to producing violet, purple, and scarlet flowers; they are all true Primroses, and when in flower form dense tufts of blossoms. I am not only endeavouring to improve the colours of the Primrose, but also to augment the quality of the flowers; and in selecting the seed parents, I am endeavouring to get the thrum eye as perfectly developed as possible, to have the pips stout and round and of a thick substance, and the colours well defined. I think the beauty and usefulness of the common Primrose as a decorative plant in our gardens during the early spring months are not appreciated as they deserve to be, and as I believe they will be at no distant date."

We have only to add that *Violet Gem* was exhibited this spring at one of the meetings of the Floral Committee of the Royal Horticultural Society, and was awarded a first-class certificate.

PLATE 63.

POINSETTIA PULCHERRIMA ROSEA CARMINATA.

Among the plants which have of late years come so extensively into use for winter decoration, not one has been found more useful than the Poinsettia. Its brilliant bracts of bright crimson are so vivid that it is sure to attract attention, while the ease with which it is now propagated, places it within the reach of all who care to use flowers in the decoration of their houses; for even with those who have ample space at their disposal, it is now the custom to treat it as an annual, and not to keep the plants from year to year. It is very difficult to grow in anything like regular form, and dwarf plants about a foot or eighteen inches high are therefore preferable.

The best plan is to take cuttings and strike them early in heat, when struck they should be potted off singly and kept in a hotbed or stove near the glass, using a compost of two parts fibrous loam, one part each of sandy peat and leaf soil, with a free admixture of Silver sand, and affording good drainage. If dwarf plants are wanted they should be stopped until July, but not afterwards, and the plants from the cuttings then put in will be very dwarf. Shift in July into the flowering pots, which for cuttings put in in the spring need not be more than seven inches in diameter; they should be kept near the glass, moderately watered, and with plenty of air.

The variety now figured was exhibited by Mr. W. Bull, King's Road, Chelsea, and is remarkable not merely for the novelty of its colour, but also for the larger number of leaves in the bracts exhibiting a tendency to duplication.

PLATE 69.

HYBRID PERPETUAL ROSE—MONS. CLAUDE LEVET.

The new roses which have been sent over to us from France, as the productions of last season, are beginning to be brought before the public by those enterprising nurserymen who, regardless of the risk, undeterred by the many failures of past years, and perfectly aware that many highly lauded novelties will prove worthless, yet venture upon giving the eighty or ninety new varieties a trial. It is doubtless a most annoying thing to have propagated at considerable trouble and expense a rose which ultimately has to be thrown away; but this is the fortune of war and the disappointment has to be borne.

Amongst those which have already been exhibited, that which we now figure, *Mons. Claude Levet*, will, we think, take the very foremost place. Mr. George Paul, by whom it was exhibited and to whose courtesy we owe the opportunity of figuring it, considers it the very best rose of the season, and we know of no one whose judgment we would prefer to his. It was raised by Levet of Lyons, who has already given us some fine roses; the habit is very good, and promises to place it amongst those varieties which are not only beautiful but easily propagated; the colour is a very rich purplish red, and the back of the petals crimson; the form is good, sufficiently full, but likely to open well.

The rose about which so much has been said, *Madame Lacharme*, has not hitherto been shown so as to deserve the high encomiums which have been bestowed upon it. It is not white, as it was said to be, and it does not seem as if it merited the character of Hybrid Perpetual.

We should add that *Mons. Claude Levet* has obtained a first class certificate from the Floral Committee of the Royal Horticultural Society.

PLATE 70.

LIELIA HARPOPHYLLA.

Very distinct and beautiful is the Orchid which has been so long known as *Cinnabarina*, a native of Brazil, compact in growth, with reddish-orange flowers, which are produced in upright spikes; and as it blooms in March, April, and May, and as, moreover, the flowers are very durable, lasting for many weeks in beauty, it is especially valuable for winter blooming.

In the month of April Messrs. Veitch and Sons of Chelsea exhibited an Orchid under the above name of *Cinnabarina*, but which in some points seemed to be distinct from it; and it has since been proved to be another species. As it promises to be a useful variety we have given a figure of it.

The genus is one which contains many glorious Orchids. What can be more delicately lovely than the lilac flowers of *Lalia grandis*, or the snowy whiteness of *Lalia purpurata* with its dark crimson-purple lip, or the grand spike of *Lalia superbens* with its deep rosy flowers? while none are more useful than *Lalia autumnalis* or *cinnabarina*. They will vary as to their method of culture, although as most of them come from either Mexico or Brazil they require about the same temperature; some grow best on blocks of wood with moss, others thrive well in pots with peat and good drainage; if grown on blocks they should be placed in the Cattleya house, with which genus they have an affinity, and require to be treated very much in the same manner. Those thus grown require more water than when grown in pots.

PLATE 71.

CAMELLIA—PRINCESS MARY.

In the year 1866 Mr. John Salter, who then held the Versailles Nursery at Hammer-smith, sent to the Floral Committee of the Royal Horticultural Society a very fine Camellia, for which he obtained a first-class certificate. When, owing to his nursery being required for the Metropolitan Railway, he had to abandon his cultures, this fine Camellia passed into the hands of Mr. William Bull, of King's Eoad, Chelsea, by whom it has been propagated, and will be distributed; for, as is well known, the Camellia requires some length of time for its propagation, and he has not been able to obtain a sufficient supply of it until now.

Princess Mary is, as will be seen from the plate, a flower of large size, the form somewhat open, unlike such flowers as *Imbricata* and *Duckesse de Berri*, but more compact than *Mathottana*, and others of that character. The foliage is large, and of a beautiful dark green colour, and the bold character of both foliage and flowers is sure to make it a favourite. We know of none in its colour and character to be compared with it.

We have so frequently alluded to the treatment of the Camellia, that it is unnecessary to dwell upon it now. We would merely say, that in our opinion over potting is injurious, and that unless in very exceptional cases, where loam, of a peculiar character is to be obtained, it is much better to grow them in good peat, and that the best peat we have ever used is that supplied by Mr. Epps of Lewisham. We can thoroughly recommend it after repeated trials, and have found it to answer especially well for the few Camellias that we are enabled to grow.

PLATE 72.

TRICOLOR PELARGONIUM MAGDALA.

In our January Number we figured a very beautiful variety of the Silver Tricolor section of Pelargonium, *Mrs. Laing*, and all who have seen it, bear witness to the accuracy of our statement, that it is the best of that section. We now figure one equally good in character belonging to the Golden Tricolor section, belonging to Mr. Bull, of King's Eoad, Chelsea, and which has also obtained a first-class certificate; and we are inclined to give it the same position in the section to which it belongs as we gave to *Mrs. Laing* in the Silver Tricolor class.

We have seen lately exhibited very attractive collections of Tricolor Pelargoniums, consisting of small plants arranged in baskets, and there can be no question that this is the best way of showing them. It is in their young state that they exhibit the highest development of colouring, and when the plants become Large it is difficult, from various causes, to secure that brightness which they have when young. We have frequently seen large plants with hardly any trace of the beauty that distinguished them in their youth, and this arises from their being kept in too cold a place. Whatever be the cause of the strange and beautiful variegation that characterizes them, they require more warmth than the general varieties from which they have sprung, hence no wonder there is no place where they are more at home than on the top shelf of an intermediate house. They colour brilliantly out of doors, but the warmer the season the brighter they are; and many of the newer varieties will by-and-by displace *Mrs. Pollock*, and others which are now so much used, especially if, as in the case of *Magdala*, they combine a robust constitution with high colour

PLATE 73.

ODONTOGLOSSUM VEXILLARIUM.

Rarely have we seen such real enthusiasm excited by a new Orchid, as when Messrs. Veitch exhibited the lovely one which is so faithfully represented by the beautiful figure of Mr. Smith, and we cannot do better than add to it the glowing description of Professor Reichenbach *fls.*

"It is horticulture that may boast to-day. That was a new red-letter day in our horticultural calendar when *Odontoglossum vexillarium* developed the first time its full charms in Europe—April 19. Some days before the flower-buds had taken a purplish tint, and finally the apex of the convolute lip began to appear through the expanding sepals. At length all these organs got free from one another, and that in a most curious manner backwards, to ascend once more, and presenting a flat appearance perhaps quite unique. The sepals and petals, and the enormous lip, three inches broad, are of a beautiful rosy lilac. The flowering plant has none of the radiating streaks to be seen in several of the dried specimens. An excellent quality of the plant is its growing very freely, and flowering extremely easy from those plants imported this year.—These lines were written under the impression of pleasure of the sight of this grand novelty at the nursery of Messrs. Veitch and Sons."

Like many of the tribe, *Odontoglossum vexillarium* varies much in its natural state; the shape of the flower is different in some specimens, and the colour also varies. We have only to add, that it received a first-class certificate from the Floral Committee of the Royal Horticultural Society, and that Messrs. Veitch and Sons were kind enough to permit the drawing to be made for illustration in our Magazine.

PLATE 74.

DRACAENA SPLENDENS.

The increased attention given to ornamental foliaged plants has induced us to figure another of the beautiful family of Dracaena, with some of which we have already enriched our pages; and Mr. W. Bull, to whom we owe the opportunity of figuring it, has furnished us with the following description:—

Draccena splendens is a remarkably distinct ornamental stove plant, of dwarf and compact, but free-growing habit, densely furnished with short oblong recurved leaves, about nine inches long and four inches broad, arranged in a spiral manner, and having winged foot-stalks. The colour is a deep bronzy green, breaking out in the young growths into bright rosy carmine, the petiole and base of the leaves margined with the same colour. The brighter colouring appears sometimes in stripes, and sometimes occupies the whole surface, while the recurved character of the densely set foliage gives the plant a flat, almost table-like head. It is another of the productions of the South Sea Islands, and has been awarded a first-class certificate by the Floral Committee of the Royal Horticultural Society.

Special prizes have been offered at some of the Spring Shows this season, especially at the Alexandra Palace, for plants of this description, and the result was that a larger number of Cycads, Palms, Dracaenas, &c, was brought together than we ever remember to have seen at any Show in the neighbourhood of Ijondon. In large places these plants are very likely to become more and more popular; but we think it is a mistake to regard them as suitable for small places, and there is always a danger of people being carried away into extremes in such matters.

PLATE 75.

AURICULA—CHARLES PERRY.

We mentioned in our last, that we had lost from amongst us one of our most distinguished florist, Mr. Charles Perry, of the Cedars, Castle Bromwich, near Birmingham; his friend Mr. Charles Turner, of the Royal Nursery, Slough, has taken the opportunity of his having raised and exhibited a very fine new Auricula to endeavour to perpetuate his memory amongst the lovers of that flower by naming it after him, and we have now the pleasure of figuring it.

Auriculas were very late in their period of blooming this year, and at the usual time when they are seen in perfection at the second April Show of the Royal Horticultural Society, there were very few plants to be seen, but at the May Show a very considerable number was staged, and especially by Mr. Turner, who exhibited a large number both of new varieties and Alpines, and amongst them *Charles Perry*, to which a first-class certificate was awarded.

It is somewhat curious that the self-coloured Auriculas are not nearly so delicate as the edged varieties, and are much more readily increased, approaching in these respects to the Alpines, a large number of which of his improved strain, Mr. Turner exhibited on the same occasion. The rich and glowing colours of these selfs are very much admired by the general public, but to the real connoisseur they do not present the same charms as the more highly bred varieties, with their marvellous combination of colouring and their refined character of appearance.

PLATE 76.

LILIUM HUMBOLDTII.

It seems to be true in horticulture, as in other things, that demand creates supply. Of late years, thanks to Mr. G. F. Wilson and others, the taste for the beautiful tribe of Lilies has revived, and forthwith either new species and varieties, or old ones that had been lost to horticulture in this country, have been introduced. Mr. Bull has been amongst the foremost to meet this advancing tide, and has obtained a supply of many valuable kinds.

Mr. Wilson has from time to time exhibited his favourites at the meetings of the Royal Horticultural Society and has charmed all who take an interest in them with the fine specimens which he has brought forward, and we may hope during the present season to see many more such exhibits.

There is one peculiar excellence connected with these Lilies, that they are perfectly hardy, many of them come from Japan, such as the numerous varieties of *Thunbergianum*, *auratum*, and *lancifolium*, and bear frost with impunity, and although somewhat sensitive to wet, yet have endured the past wet season without loss. Others, such as that which we now figure, come from California, and other parts of North America, and any one who admires richness of colouring and beauty of form cannot but admire such sorts as *Californiaicum*, *Canadense*, and *Humboldtii*.

Lilium Humboldtii is a native of Humboldt County, California, it attains the height of about five feet, and produces large golden yellow flowers, richly spotted with deep purple.

PLATE 77.

AMARYLLIS—BEAUTY OF REIGATE.

While adhering as firmly as ever to the belief that well-formed flowers are ever more beautiful than ragged and uneven ones, we readily admit that there are other qualities which may sometimes lead us to disregard the one matter of form in their behalf; amongst these are brilliancy of colour and freedom of flowering. Thus, for instance, amongst Roses that fine rose *Eugène Appert* possesses no pretensions to form, but we should be very unwilling to dismiss it from our garden, valuing as we do the exceeding brilliancy of its colouring; and so with a more recent one, *Abbé Bramarel*, though somewhat loose and ragged, we hold that as a garden rose it deserves a place, and we believe will maintain it. So with the variety of Amaryllis we now figure; it cannot for a moment be compared in beauty of form with others that we possess, but as exhibited, it seemed to be so very free in flowering, and the colouring was so brilliant, that we do not wonder at the award which it received.

A. Beauty of Reigate, was raised by Mr. Brown, gardener to A. J. Waterlow, Esq., Great Doods, Reigate, who is we believe a great admirer of this very ornamental flowering bulb, and was exhibited by him at the Royal Horticultural Society at South Kensington, when it was awarded a first class certificate, especially for its free habit, the bulbs producing two or more stems each. We wonder that the flower is not more grown amongst us than it is, as it only requires an intermediate house and a good strong soil. Like many other bulbs, it is somewhat impatient of having its roots disturbed, but presents no real difficulties of cultivation.

PLATE 78.

ABUTILON—BOULE DE NEIGE.

All who cultivate greenhouse flowers have grown and admired that fine old and easily grown plant the Abutilon, and the efforts of hybridizers, especially in France, have been devoted to its improvement. In this they have been successful; thus in *Due de Malakoff* we have a neat growing variety, very free in blooming, and a great improvement on the old *striatum*, while *insigne*, a large growing variety, when space can be given to it is very valuable; the ground colour is white, but so completely covered over is it with veins of deep rich crimson that but little white is to be seen, while in *vexillarium* we have a brilliant red calyx with light yellow corolla. That which we now figure is entirely distinct from its predecessors, being, as its name implies, pure white.

Abutilon Boule de Neige was exhibited by Mr. Standish of the Royal Nursery Ascot, and was received by him from France; he describes it as very free flowering, as indeed could be seen from the small plants exhibited by him being full of flowers, and he also states that it is very valuable as a subtropical plant, bearing exposure to the summer well, and interesting by the contrast of its pure white flowers and bright green foliage.

The Abutilons are very easily cultivated, requiring as soil turfy loam and peat, with some coarse sand and a good supply of water in their growing season; they do very well planted out against a pillar in a conservatory, where they will produce a large number of flowers suitable for cutting.

PLATE 79.

MASDEVALLIA DENISONI.

"When introducing the first of these curious and valuable Orchids to our readers, we stated that they promised to become very valuable as cool-house Orchids, and that in all probability many more varieties or species would be discovered. This has proved to be correct, and in *M. Harryana*, *Lindeni*, *ignea*, and others, we have either natural varieties or distinct species. That which we now figure was exhibited by that enthusiastic lover of Orchids, Lord Londesborough, and is called after him.

We have frequently repeated our opinion that Orchids are often seen in even greater perfection in cultivation than in their natural condition, and we were led to this conclusion from the fact that dried specimens and descriptions of those who discovered the plants, give us smaller dimensions than the same plants exhibit under cultivation, and that they produce larger flowers after they have been in cultivation some years. This is the case with the *Masdevallias*. We saw some blooms of *Masdevattia Harryana* that Mr. Anderson brought to the Flower Show at the unfortunate Alexandra Palace, which were twice the size of any that we had before seen; and the same holds good of other varieties and species.

The love for Orchids seems to be by no means decreasing, for although many of our older cultivators are from one cause or another giving them up, others supply their places, and the prices given at sales bear witness to the ardour with which they are cultivated.

PLATE 80.

NEW DOUBLE-FLOWERED BLUE LOBELIA.

No plant is more extensively used for bedding purposes than the *Lobelia*, and many varieties have been from time to time brought forward as improvements on those which we already have. Some are recommended for their colour, and some for their habit, but in very few instances are they improvements on those we already have, notwithstanding the high-sounding names with which they are heralded. But if we mistake not, an exception must be made on behalf of that which we now figure, so entirely distinct from all others, and so valuable for bedding purposes.

We understand from Messrs. Dixon and Co., of Moorgate Street and Hackney, that this (like a great many good things that we possess) was a chance seedling, and we can testify that when it was exhibited at the Royal Horticultural Society at South Kensington, there was but one opinion of its merit, and every one that we met with expressed their admiration of it. It will be seen (and Mr. Smith's drawing is no exaggerated picture) that it is a variety of the old and valuable *pumila*, and partakes of its exceedingly dwarf character. Its flowers of deep blue are produced in great quantities, and nothing can exceed the beautiful neatness of the entire plant. It is easily propagated, and we believe that when more known, it will entirely supersede many of the single varieties now in use. Its flowers, being double, are more persistent, while the colour is equal in intensity to any we have. It received a first class certificate from the Floral Committee, and is now being distributed by Messrs. Dixon.

PLATE 81.

PELAEGONIUMS—SCOTTISH CHIEFTAIN AND RUTH.

Among the objects of interest exhibited at the Provincial Exhibition of the Royal Horticultural at Bath, none were more appreciated than the very beautiful collection of Pelargoniums exhibited by Mr. Charles Turner, of the Royal Nursery, Slough. Some of those which have been shown as seedlings during the past two years, were exhibited as wonderful specimens of cultivation, being in small pots, and covered with dense masses of flowers of the most brilliant colouring and perfect form. Along with these were some baskets of seedlings not as yet in commerce, which were certainly in advance of those we already possess, even of those exhibited in the collection we have alluded to; many of them, such as *Grand Monarque*, and those we now figure, were greatly admired, and received the highest commendation.

Scottish Chieftain (fig. 1) is a flower of great substance, carmine ground colour, and the upper petals of deep maroon, with a narrow edge of crimson. We have several flowers already of this type, but this is both in size and colour in advance of them. *Ruth* (fig. 2) is a flower of an entirely different character, the colour is a rich deep carmine with a small black blotch in the upper petals, and when seen on the plant as grown by Mr. Turner, the effect was dazzling. We wish that the constant endeavour of this exhibitor to keep up the taste for this lovely tribe of flowers may be rewarded by an increased interest in them, for at present it is unfortunately confined to a few individuals; the rage for tricolours is pretty well over, and perhaps these more worthy objects may take their place.

PLATE 82.

LEWISIA REDIVIVA.

We had lately the pleasure of visiting the extensive nurseries of Messrs. Bachhouse and Son, of York, and amidst the rarities which help to give so great a charm to their beautiful Alpine garden, we could not fail to notice the most lovely and curious Alpine perennial which we now figure, and of which Mr. Bachhouse says, "It resembles a very fleshy-leaved Thrift, forming rosettes of leaves, each two to three inches long, with a thick, woody, branching root-stalk. After the leaves attain their full growth, in spring or early summer, a profusion of the most lovely flowers are put forth from each crown or centre, which almost eclipse the whole plant. Each blossom is three to four inches across, and consists of eight to twelve shaded pink petals, the centre being nearly white and the tips rose colour; the whole having a satiny lustre, which is very pleasing. A remarkable feature of this plant is its great tenacity of life. The first example, we believe, which reached this country, had been dipped in boiling water, and then pressed for a Herbarium specimen for nearly two years; it still showed signs of life, and eventually grew and flowered. Its thick root is eaten by one or more Indian tribes, who so esteem it as a vegetable, that it bears among them a name which signifies 'the gift of the Great Spirit.'

"This interesting plant is a native of Oregon and the Rocky Mountains of North America, from whence we received a limited supply of healthy roots last spring. It belongs to the same natural order as the *Portulaccas* and *Calandrias*, but is a hardy perennial."

We can fully endorse all that Mr. Bachhouse has said of its curious and beautiful character, and are confident that it will be a favourite with all who value Alpine flowers.

PLATE 83.

UTRICULARIA MONTANA.

No one has more contributed to the increased taste for Orchids than Lord Londesborough, nor has any one better shown of what they are capable than Mr. Dehning, his Lordship's able and intelligent gardener. We have from time to time taken the opportunity of figuring many of the newer forms exhibited from this collection, and we now add that of a very curious and beautiful plant which was shown at one of the meetings at South Kensington during the present summer. We are indebted to Mr. Denning for the following remarks:—" *Utricularia montana* is a dwarf-growing plant of an epiphytal nature, and is thus unlike our British species which always grows in or under water. The plant in question requires an abundance of water all the year round, and seems to grow well in an ordinary Orchid basket filled with a very loose material, in our case of the fibre only of peat and sphagnum, and this is placed in the basket as lightly as possible. In this loose stuff the little tubers grow almost as freely as potatoes in ordinary soil, and the roots, if such they are, branch out in all directions in the atmosphere as well as in the material, but these roots have more the appearance of runners than roots, as they throw out little plants at the joints or places where they are continually branching off at right angles."

The beautiful clear white of the flowers, and the freeness with which they are produced, make the plant not only interesting, but beautiful, and justified the admiration bestowed upon it when exhibited at the Eoyal Horticultural Society.

PLATE 84.

SILENE PENDULA COM^ACTA.

All who are interested in spring gardening know how very useful for the formation of masses of pink colouring is the old *SUene pendula*; so easy of cultivation and so profuse in blooming, but owing to its height it is generally inapplicable for small gardens, and we are quite sure that the variety which we now figure, will at once be seen to be a valuable addition to our list of spring flowering plants.

SUene pendula compacta is of the same colour as the type, but differs entirely from it in its mode of growth, being very dwarf and compact, and entirely covered with its bright pink flowers; in fact it forms dense cushions from two to three inches in height, and from nine to twelve inches in diameter. It will therefore be a most useful plant for the edging of large beds, for ribbon borders, or for small beds.

As it reproduces itself true from seed, no difficulty will be found in keeping up a supply large enough for any garden. Like all spring flowers of this description, the seeds should be sown in the previous July, and then transplanted into store beds, so as to give them a nice COBO habit, and then planted out in the autumn after the summer flowering plants have been removed. Many persons do not take the trouble of transplanting, but plant out at once from the seed beds, the extra trouble is, however, as in the case of all annuals, well repaid.

We have only to add, that it has obtained a first-class certificate from the Eoyal Horticultural Society, and that the entire stock of seed is in the possession of Mr. William Bull, of King's Road, Chelsea, by whom it is now being distributed.

HIBISCUS (*Rosa sinensis*) PUNICEUS.

We have already figured several of the varieties of this showy tribe, which have been lately introduced amongst us, and which are so admirably adapted for large stoves; and the present one will, we are confident, be equally a favourite with those who admire richness of colouring and freshness of foliage.

Mr. Bull, to whom we are indebted for the opportunity of figuring it, thus describes it:— "*Hibiscus* (*r. s.*) *puniceus* is a very attractive stove plant, of a remarkably dense and close growing habit, as compared with others of the same well-known showy genus. The leaves are shortly and broadly ovate, of a deep green colour, with an irregular toothed margin; the flowers are double, three inches across, and the wavy petaloid bodies which form their close centre are almost two inches in depth, "and have a very elegantly crisped appearance; the colour is a bright dense crimson, so that the blossoms are very attractive. It is one of the many importations from the South Sea Islands."

As we have already, when figuring the other species, alluded to the method of cultivation, we have now but little to add; the whole family presents but little difficulty in this matter, and it makes an additional recommendation to those who desire to obtain a good effect with little trouble.

ARISTOLOCHIA FLORIBUNDA.

Amongst the many curious and beautiful stove climbers with which our gardens have been enriched of late years, the genus *Aristolochia* has furnished many remarkable plants; some notable for their gigantic size, and others for their curious markings. One, which was introduced a few years ago by Mons. Linden of Brussels, *A. Ducharteri*, was most singularly marked, looking almost like a piece of printed calico; and it is to the same zealous horticulturist that we are indebted for the plant now figured, or rather to his predecessor at Ghent, M. Ambroise Verschaffelt.

Aristolochia floribunda has two qualities to recommend it, it is of a smaller habit than many of its congeners, and it flowers with a profusion that amply justifies the specific name it has received. It will be seen that the flowers have a centre of a yellowish-white ground; the limb has a purplish-red ground, with yellowish mottled markings, and the centre is of a clear yellow. Doubtless it is one of the most beautiful of the genus. It was lately exhibited by Mr. Muller at one of the meetings of the Royal Horticultural Society, and received a first-class certificate.

The stove *Aristolochias* are all strong growing and easily managed plants. Some of them, indeed, for their great size, are only suitable for very large places, where their large handsome heart-shaped leaves and fine flowers make a grand display. They require to be grown in a mixture of loam and peat, and to be kept at a temperature of from 65° to 80° in summer, and in winter from 55° to 60°. They are easily propagated by cuttings of the fine wood placed in sand, in heat, under a bell-glass, and when rooted potted off in the compost already named as suitable for growing them in.

PLATE 87.

CARNATIONS—MARS AND GUARDSMAN.

It is somewhat singular that while we have received every year many additions to our lists of Ficotees, Carnations have, comparatively speaking, remained much as they were -. last year indeed Mr. Turner introduced two or three of promising character, but as a rule they have not kept pace with their congeners. It is not because they are not as much sought after as the Picotees, for although not possessing their delicacy of colouring, they have so much brilliancy that they are sure to excite admiration amongst all true lovers of flowers.

Florists in the south are indebted to Mr. Charles Turner, of Slough, for the great interest he takes in this beautiful tribe of plants; to him we owe such fine varieties as *JnniJiUator*, *Graceless Tom*, *Eccentric Jack*, and *James Merryweather*, and others, possessing better habits than some of the older varieties, for there are many amongst them which are very difficult to propagate, and are still scarce, although they have been in cultivation for a great many years. New varieties, then, of strong constitution, are most desirable.

The varieties we now figure are *Mars* (fig. 1), a scarlet bizarre of great beauty, the colours are very bright, and the stripes very regularly disposed, it was raised from Jackson's *Captain Stott*, by Mr Hextall, and it is one of the finest we have. *Guardsman* (fig. 2) is a flower somewhat similar in colour, but much brighter, the scarlet is especially fine, in fact, we may say that they are valuable additions to the class, and being of good habit, will be very generally appreciated.

PLATE 88.

AQUILEGIA CHRYSANTHA.

{*Aquilegia leptocera* vaT. *lutea*.)

Amongst herbaceous plants there are few which have been more generally admired than the Columbines. They are sure to be found in most cottage gardens, while the number that have been either introduced of late years, or else have been recovered after "having been well nigh lost to our gardens, form some of the most beautiful of our plants for herbaceous borders or the rockery, *Aftuxhgia ccerulea*, which was introduced by Mr. Thompson, of Ipswich, is a very lovely species, and was figured some years ago in the Floral Magazine, since which time, the ease with which it is cultivated, its readiness to produce seed, and its great beauty, have caused it to be widely distributed. We have now the pleasure of figuring another of a different type, but which will, we think, be quite as great a favourite when it comes to be more widely known.

Mr. Backhouse thus speaks of it:—" This is unquestionably one of the finest perennials we ever introduced. Its large golden-yellow long-spurred flowers are produced in great abundance from densely tufted plants which maintain a long succession of blooms. This species has not yet flowered with us, but magnificent dried specimens of the blossom have been forwarded to us from North America. These are not unlike very large examples of *A. ccerulea* with long straight horns. So far as we can ascertain, this plant has nothing whatever to do with *A. aurea* of Roezl, of which the flower is scarcely half the size, and of a sulphur-yellow shaded with green.

PLATE 89.

TACSONIA INSIGNIS.

All who are acquainted with the singular beauty of *Tacsonia Van Voloemi* will think it difficult to find a plant of the same family that can rival, much less surpass it. But some persons who have seen that which we now figure consider it equally beautiful with the older species. This opinion is shared by Dr. Masters, the able editor of the *Gardener's Chronicle*, in which periodical a woodcut by our artist, Mr. W. G. Smith, appeared in the month of August last. Dr. Masters says:—"Our specimens were forwarded to us by Mr. Anderson, the gardener at Soweby House, Hull, who informs us that the plant was raised by him from seeds sent from South America (probably Peru, exact locality not known) by Mr. Yarborough Graeme, some years since. Mr. Anderson says that it is very free-flowering, exceeding in this respect even *T. Van Volxemi*."

"It is clear then that we have here a novelty of unusual interest. We say a novelty, because neither in books nor herbaria do we find any species to which it can be referred; and as we have had recently occasion to study the whole order of Passion Flowers, we can hardly be mistaken in asserting it to be hitherto undescribed."

A reference to our illustration will show that the plant has large flowers nearly six inches across, of a violet-rose tint; but the tints soon alter after the flower is gathered. The mouth of the flower has a fringe of short filaments of blue mottled with white, the leaves of the plant are large and handsome, and we can, in fact, speak of it in the very highest terms. It was accorded a first-class certificate by the Royal Horticultural Society, and has passed, we believe, into the hands of Messrs. Backhouse and Son, of York, by whom it will be sent out next year.

PLATE 90.

ODONTOGLOSSUM ROEZZII.

Orchid growers must be a discontented race if they are not satisfied now. Hardly had the beauties of *Odontoglossum vexillarium* burst upon them, than they are called upon to admire this new species, which was exhibited by Mr. Bull, of King's Road, Chelsea, adding another to the many grand plants of which he has been the introducer. We cannot do better than give the words of Professor Reichenbach^s.—"A first-class beauty, standing very near *O. vexillarium*, and yet apparently quite distinct; the leaves are very different, very narrow, and have nine deep green lines underneath on the chief nerves. The flower is much like that of *O. vexillarium*, but technically different in the keels at the base of the lip; they are, too, spread in an uneven manner, having no sepals rolled backwards; the colour is admirable, milk-white, the petals dark purplish at the base, and the back of the lip yellow, with some brown streaks."

"I was happy enough to see this highly curious novelty a few days since in the collection of Mr. Bull. Though not yet established fully, it proves itself a fine flower, showing two spikes; when established the plant may have them four- or six-flowered. Can it be a mule between *O. vexillarium*. and *O. Phalanopsis*?"

The illustration by our artist, taken by the kind permission of Mr. Bull from the plant above alluded to, gives an admirable idea of its beauty.

PLATE 91.

VARIETIES OF BABIANA.

'We are gratified every year by the exhibition of some fine trusses of *Ixias*, *Sparaxis*, *Tritonias*, and *Babianas*, by Messrs. Hooper of Covent Garden, and we often wonder why they are not more generally cultivated. These collections, it is true, come from the Channel Islands, where they can be grown with greater certainty than in our more capricious climate, the damp of our winters seriously interfering with their well-being; but the following statement of Messrs. Barr and Sugden clearly show that they can be easily cultivated:—"At our experimental grounds we have grand displays of these charming flowers year after year, sometimes by making up a temporary pit, and placing in it about a foot of good soil, and in this plant the bulbs about two inches deep, and during wet and frosty weather protect simply with shutters. The masses of bloom in May we have had from these were surprising, and we could not help feeling at how trifling an amount of trouble so large a quantity of valuable flowers to act for indoor decoration could be produced."

We are indebted to our friend W. E. Gumbleton, Esq., of Cork, for the fine blooms of the four varieties kindly sent to our artist. In the soft balmy air of the south of Ireland they succeed admirably, and he has given us glowing descriptions of their beauty. We have here in England not the favourable conditions that he has, but by adopting some such plan as that suggested by Messrs. Barr and Sugden, the difficulty of climate may be overcome, in fact, to the real lover of flowers no difficulty is too great to prevent him from cultivating his favourites, and hence we hope that this beautiful group of plants may become generally cultivated.

PLATE 92.

AURICULA—CHARLES E. BROWN.

It is not given to every raiser of seedling flowers to be so fortunate as Mr. Headly, if as a raiser of tulips he has succeeded in producing some flowers which mark his skill and diligence, it is still more so with the Auricula. The finest variety in growth is *George Lightbody*, raised by him. *Alderman Wisby* is another fine green-edge, while *Charles Edward Brown*, the variety we now figure, has received, when exhibited by ourselves, the award of a first-class certificate from the Royal Horticultural Society, and has taken, we observe, a prominent place on the winning stands at the North of England exhibitions, where the Auricula is much more cultivated than in the South.

We have already some very fine flowers in the grey-edged section to which this flower belongs, some of them possessing all the qualities required in a first-rate Auricula, and others, such as *Chapman's Maria* and *Sophia*, having a brilliancy of colouring quite unequalled in any other flower; but we think that a very leading position will be obtained by this variety, for, independently of its fine properties as a flower, the habit of the plant is excellent; and if we may judge from our own case, more free in throwing off offsets than many are. It is this shyness in reproduction that tends to make the Auricula so scarce, and which keeps up the prices of some of the sorts, for while, in the case of other flowers, the prices fall rapidly, many Auriculas are now quoted as high as they were a dozen years ago.

The stock of Mr. Headly's Auriculas passed some time ago into the hands of Mr. Charles Turner of the Eoyal Nursery, Slough, and with it the remaining plants of this variety, -which had, however, been distributed by the late Mr. George Lightbody, of Falkirk.

PLATE 93.

PESCATOREA CERINA.

We have in the family of Orchids so many varied and beautiful forms, that all lovers of flowers must find in them a never-ceasing source of pleasure and interest, and even at a time of the year when other flowers are scarce, the Orchid house is sure to present some beautiful objects; the *Calanthes*, especially *Vestita* and *Veitchii*; the *Sophronitis*; some of the numerous species of *Odontoglossums*, &c. &c.—then display their beauties, and tend to make the house gay at a season of the year when each flower is valuable.

The Orchid which we now, through the kindness of Mr. Bull, are enabled to figure, is one of a comparatively limited genus; indeed, it has been only of late years formed, and named in honour of one of the most eminent of French Orchid growers. It is a native of Costa Rica, and has also been found in other parts of South America. It is a very easily cultivated and free-growing Orchid, blooming well when grown in a warm house. The flowers are very persistent, and lasting in perfection for a long time; a quality in which many Orchids excel; while others, as the *Stanhopeas*, although almost fleshy in their consistence, only remain in flower for a few days.

Although not possessing the brilliancy of some, or the sterling characters of many of the family, we think that the facility with which it is grown, will entitle it to a place in the collection of any lover of this very beautiful tribe.

PLATE 94.

CAMELLIA EUGENE DE MASSINA.

Some time ago we were visiting the fine old residence of the Derings, at Surrenden, in the County of Kent, and amongst other things were attracted by some new Camellias, which had recently been brought from Italy, where this fine plant is largely grown, and from whence many of our choicest seedlings (as their names show) have reached us; amongst others we remarked especially a very beautifully cupped flower of deep blush colour, and obtained a flower of it for our artist.

Last season a nice collection of small plants was exhibited by Mr. William Paul, of Waltham Cross, and amongst them we noticed the same flower, and we then determined to illustrate it, as it is one of those attractive varieties which all lovers of the Camellia will be sure to appreciate.

It has been noticed lately in the discussions which have taken place on the value or otherwise of leaf mould, that the beautiful Camellias we receive annually from Ghent, are grown principally in it, and that indeed it is used there for almost every kind of plant, and hence when properly prepared, and of sufficient age, it will be found to be a valuable medium for growing them in; the forgetfulness of this fact is, perhaps, one of the reasons why these foreign Camellias so soon deteriorate in many hands. They are shaken out, potted frequently in a compost entirely different to that in which they have been grown, and as frequently over-potted; and then complaints are made that the Camellia is difficult to grow. We have, during the past year, seen it flourishing in many situations, and especially when planted out in conservatories, and we are sure that with proper care it is a most easily grown plant.

ERTTHRINA PARCELSIL

The genus *Erythrina* has been well known for a long time as containing some very valuable plants, with bold leaves and very handsome flowers, and many of the species, such as *E. cristagalli*; and garden varieties, such as *Mane BeUanger*, have been used largely for summer gardening. We have seen in Paris large beds of them, giving, with their brilliant coral-like flowers, a very grand aspect to the subtropical garden.

In the south of England and Ireland, many of the species will thrive admirably in the open air, if the crowns of the plants are covered over with cocoa-nut fibre, ashes, or some other protecting material. In the culture of it in the greenhouse, it should be kept dry during winter, and when it shows signs of growing, should be shaken out of the pot and repotted. The soil most suitable to them is a mixture of peat and loam, to which a little sand has been added. When the flowers are near opening, they should be removed to a cool greenhouse.

The species which we now figure is remarkable for its fine variegation, and the leaves are large and strikingly handsome, while the flowers, which are of a bright crimson red colour, are very showy. It has been introduced from the South Sea Islands, and is included in the many valuable plants sent out by Mr. Bull.

DWARF NARCISSI.

Since the renewed attention that has been given to the old favourites of the garden, many of our hitherto neglected garden bulbs have been brought anew into cultivation, although it is to be feared that many of them have been irrevocably lost, amongst these the Narcissi have claimed and justly obtained a place. The prizes offered by Mrs. Wynne have not, it is true, brought forward a large number of competitors, but they have at least shown the zeal and intelligence with which some of our cultivators, especially Mr. Peter Barr, have pursued the subject, and we have therefore, in order to encourage this revival of a laudable taste, illustrated one little-known section of the very dwarf Narcissi.

The task of properly naming this genus seems to be wellnigh hopeless Mr Baker, of Kew, has recently made a valuable effort in this direction, but we are naturally more concerned with the popular than with the scientific view of the question; and we desire especially to commend to those who are interested in herbaceous borders, these beautiful miniature flowers. Planted near the edge of a rockery, they expand their flowers when just peeping out of the ground, and in very early spring; and as other varieties succeed one another, a succession is obtained until the double *Narcissus Poeticus* flowers in June; there is hardly any genus of spring-flowering bulbs which gives so long a succession of blooms as this, and this makes them the more valuable. We may hope then, that with the encouragement given to them, we may see a widespread interest in their cultivation, and we are sure that any one who had seen the large number of varieties exhibited by Mr. Barr during the past season would be impelled to attempt their cultivation.

THE FLORAL MAGAZINE.

NEW SERIES.]

JANUARY, 1873.

[No. 13.

EXHIBITIONS.

ROYAL HORTICULTURAL SOCIETY.

DECEMBER 4.

To hold a Flower Show in December seems somewhat a Quixotic attempt; but a visit to the Council-room on the above day would have convinced the most sceptical that such a thing is not only possible, but that a display may be got together which would not discredit even a more favourable time. Groups of plants were contributed by some of our most successful caterers for novelties. Messrs. Veitch and Bull's collections of cut blooms of Chrysanthemums, collections of Cyclamens, of herbaceous plants suitable for out-door winter decoration, hardy Conifers, and Hollies; of vegetables and salading; Tree Carnations and Roman Hyacinths—all tended to make up a very pretty show. Amongst the subjects submitted to the liloral Committee were *Aphelandra nitens*, with handsome deep green, glossy foliage, and rich orange-crimson flowers, exhibited by Messrs. Veitch and Sons, to which a first-class certificate was awarded. The same award was given to *Poinsettia pulcherrima major* from the same firm, in which the rich-coloured bracts were more numerous than in the old form. First-class certificates were also awarded to Mr. W. Bull, for *Croton spirale*, the leaves of which, yellow and crimson and purple, were singularly twisted; *Croton majesticum*, a very handsome species, with leaves fifteen inches long, mottled and veined with crimson and yellow; and *Zygopetalum cerinum*, a very handsome Orchid, with sepals and petals greenish-white, the lip yellow, and the throat barred with crimson. Mr. Croucher, gardener to J. Peacock, Esq., Sudbury House, Hammersmith, also obtained a first-class certificate for *Agave Corderoyii*, with light-green leaves and purple spines; and Mr. Green, gardener to Mr. Wilson Saunders, Hlel field, Reigate, received a second-class certificate for *Cceleopsis hyacinthosma*, with waxy white flowers. Amongst the Chrysanthemums exhibited were Dr. Masters' *Grandiflora*, *Magnum Bonum*, and *Comet*, John Salter, *Princess of Teck*, *Lady Slade*, Rev. J. Dix, *Pink Perfection*, and *Empress*. Mr. Turner's collection of Tree Carnations was very beautiful, and comprised *Avalanche*, *Blanche*, *Purity*, *Rosy Morn*, *Alice*, *Princess Christian*, *King of the Belgians*, *Attila*, *Minerva*, *Valiant*, and *Vestal*. On the whole, the exhibition was a most successful one. We are glad to state that an

admirable portrait of the late Rev. Joshua Dix, for many years Chairman of the Floral Committee, has been hung up in the Council-room, it having been subscribed for by some friends, and permission obtained from the Council for its being placed in the Council-room.

ALPINE PLANTS.

No one who has ever seen some of the beautiful gems of the Alpine Flora in their native habitats, but must have felt how utterly inadequate a representation of them can be given in any rockery, however extensive it may be; but at the same time, there has been no doubt the impulse to carry home some of them, and attempt their growth. It was with such feelings that we, in the month of June last saw, for the first time intermingled *Silene acaulis* and *Gentiana alpina* on the very summit of the Col du Baumc; and as we thought of our home garden, wondered whether it would be possible to transport some of them. We essayed it; but alas! the grass in the turf is all that remains—the *Gentianas* and *Silene* are gone. However, the plants are obtainable at home, and the grass will probably be as good a reminder of one of the most pleasurable days we have ever spent. But it has suggested to us the thought that in these days of sensational gardening, it is well to remind our readers that there is a source of great enjoyment open to them in the cultivation of these beautiful gems, and that it may be attempted even in places of limited extent.

In forming a rockery there are often many mistakes made; some seem to imagine that any out-of-the-way shady place will suit them, whereas in truth no plants rejoice more in bright sunshine than they do. Others build up an elaborately formed piece of rockwork, and think that this is an imitation of nature, and then put their plants in, in any way, not considering their peculiar habits or the soil that they delight in, whereas no plants are more chary of displaying their charms unless their wants are properly attended to. Many of them, although never rising above a few inches in height, yet strike their roots deep down in the soil. Others make their rockery, and then allow all sorts of coarse and rampant weeds to grow over it, thus choking and destroying many of these slender-growing gems. We ourselves have formed one on the border of a shrubbery fully exposed to the sun, but slightly overshadowed with

trees; nothing would grow, and so we obtained a good supply of tolerably good loam, raised a slight bank, and placed carelessly on it a quantity of stones—unfortunately the only stones procurable here are flints, and they are not the most suitable; we then obtained a quantity of various kinds of soil—peat, loam, sand, and leaf mould, and having obtained also some plants, we then prepared nooks and spots in which to place them. Messrs. Backhouse and Son, of York, and Mr. Ware, of Hale Farm, Tottenham, publish catalogues in which the best varieties are given and the character of soil suitable for them is indicated; while in Mr. Robinson's "Alpine Plants" fuller descriptions and directions for culture are given, so that there need be no difficulty in planting them; afterwards they will require care to prevent the weeds from overtopping them, and watering in dry weather; and then, especially in the earlier parts of the year, there will be no lack of beauties to reward the care bestowed on them. It would be out of place to name all the species suitable, but in *Silene*, *Gentiana*, *Dianthus*, *Androsace*, and others, would be found plants of great beauty; indeed, we would advise any one desirous of forming an Alpine garden to place himself in the hands of either of the persons we have named, and he will not fail to be satisfied.

YELLOW ROSE'S.

A CORRESPONDENT asks, which is the best yellow rose? We unhesitatingly say, Cloth of Gold; but then it will not do everywhere. In our parish there is one house literally covered with it, and we are not without hopes it will bloom well with ourselves. *Merveille de la Malmaison* is a grand rose; it has one fault—that the footstalks are not stout enough to support the head, so that it always hangs down and hides its beauties, but as a cut rose nothing can exceed it. *Gloire de Dijon* is hardly yellow, so many shades are to be found in it, otherwise it is the rose for all soils and situations. *Rose de France* is a beautiful rose, and its habit is admirable. We think these are the four best yellow or yellowish roses in cultivation.

REVIEW.

The Natural Unity of Plants. By Prof. H. BAILLON, President of the Linnean Society of Paris. Translated, with additional Notes and References, by MABCUS M. HAITTDG, B. SC. Vols. I. and II. London: L. Reeve & Co.

IN these two handsome volumes we have an important instalment of the most advanced work on the subject of which it treats. Englishmen are here presented in plain English, and with as little technicality as the nature of the subject permits, with a survey of the entire Vegetable Kingdom from original observation. Under each

Family the structural peculiarities which distinguish it are first very fully and minutely described; then the differences on which are based its subdivision into Orders and Genera; next follow particulars of the geographical distribution of the plants; then the properties which render them either serviceable or obnoxious to man; finally, a syllabic list of Genera. Professor Baillon differs from English botanists in his views of classification, but this does not detract from the accuracy of his descriptions or the value of his observations. In the notes full references to authorities are given, and many matters of technical detail of less interest to the general student are discussed. The work is profusely illustrated by a series of woodcuts—over 800 in these two volumes—unsurpassed, if not unequalled for beauty and accuracy. In these we have full portraits of plants, showing their general form and habit, and numerous sections of flower, fruit, and seed, exhibiting the minutest details of their structure. This work will be indispensable to every student of botany, and a welcome companion to every lover of plants. In the present volumes are included the Families *Ranunculaceae*, *Dilleniaceae*, *Magnoliaceae*, *Anonaceae*, *Mommiaceae*, *Rosaceae*, *Connaceae*, *Leguminosae*, *Mimosaceae*, *Leguminosae*, *Leguminosae*, *Papilionaceae*, *Proteaceae*, *Lauraceae*, *Ebenaceae*, and *Mycetozoa*.—F.L.S.

CATALOGUES RECEIVED.

R. Dean's Catalogue of Potatoes.—Although we may perhaps dispute the author's statement, that this is "the literary feat of the season," we can yet accord it the praise of being an exceedingly carefully written catalogue, giving directions for cultivation, and a selection of sorts, which, from the author's knowledge of the subject, we may reasonably conclude to be a reliable one.

Viek's Illustrated Floral Guide.—Unquestionably our Transatlantic brethren are ahead of us in the matter of catalogues. The one before us is a quarterly issue, and contains 130 pages, admirably got up, and most profusely illustrated. Some of the wood engravings we recognise as old friends, but many are quite new, and a great deal of valuable information for American horticulturists will be found in the introduction.

HOW TO EXTIRPATE PLANTAIN FROM FARMS.

Various methods have been recommended for effecting this object, but many of them are utterly useless. We have, however, lately tried oil of vitriol, which requires to be carefully used, as recommended in the *Journal of Horticulture*. A pointed stick, dipped in the bottle, will hold a drop of it, which should then be applied to the centre of the plant. It immediately burns it up, and destroys its vitality; and although it renders the lawn unsightly for a time, yet if it be sown with grass seeds, it will soon recover, and all traces of the weeds will have disappeared.

THE FLOKAL MAGAZINE.

NEW SEBIES.]

FEBRUARY, 1878.

[No. 14.]

EXHIBITIONS.

ROYAL HORTICULTURAL SOCIETY.

JANUARY 15.

THIS, the opening meeting of the year, was an exceedingly interesting one, and doubtless to many possessed more charms than the more extensive exhibitions held in the summer, as flowers at this season of the year are specially valuable. A magnificent lot of Orchids was shown by Mr. Denning, gardener to Lord Londesborough, while Messrs. Veitch and Sons, Mr. Williams, Mr. Bull, and Messrs. Standish and Co. of Ascot, contributed large collections of plants of various kinds which tended to make a very fine display. It would be impossible in our limited space to enumerate all the various objects of interest, and we shall therefore confine ourselves to those which were awarded certificates. Messrs. Veitch and Sons received first-class certificates for *Odontoglossum Halli*, a fine species with white and yellow flowers barred with brown; *Phaius Bernaysi*, very similar in character to *Phaius grandiflorus*, but with the sepals and petals white, with pale yellow lip; *Vanda Cathcarti*, a very distinct species with reddish flowers; and a very elegant *Gymnogramma*. Mr. Haage, of Erfurt, was awarded one for *Pilosorus Dautwitzii*, a very interesting succulent covered with white down. Mr. Clarke, of Twickenham, obtained the same for *Cyclamen persicum giganteum superbum*, a very splendid light-flowered variety of very great size and beautiful shape. Mr. Green, gardener to Mr. Wilson Sannders, obtained a first-class certificate for *Stenorrhynchus Orfcgusi*, a pretty succulent with spotted leaves and reddish flowers; as did also Mr. T. Carey, North Lodge, Ipswich, for a double-flowered *Primula* with lilac-coloured flowers. A new Beet, called Clarke's Variegated Beet, was exhibited by Mr. Clarke, gardener to W. S. M. Innes, Esq., Parsons Green, Edinburgh, and was awarded a first-class certificate, as it was considered a very desirable plant for winter decoration. The foliage varies from light carmine to rich orange, and the group exhibited on this occasion presented a most beautiful appearance. There were several other promising flowers, but they were not considered deserving of certificates, amongst them some bright flowering *Primulas* exhibited by Mr. R. Dean, of Baling, and one called *Lady Madeline Taylor*, by Mr. H. Canncl, of Woolwich.

NEW WHITE HYBRID PERPETUAL ROSE.

IF we are rightly informed a grand addition has been made to one of our most limited classes—White Hybrid Perpetual Roses—in the new rose, *Madame Lacharme*, raised by Lacharme, of Lyons, and distributed by Messrs. George Schwartz, the successors of Messrs. Guillot, *Fère*. When a raiser calls a flower after his wife we may be sure that he has formed a very high estimate of it, and when the raiser is so experienced as Lacharme, who has given us one of the very best roses in cultivation, Charles Lefebvre, we are the more inclined to believe that we have gained a gem of the first water. It is said to be a seedling from Jules Margottin, and to possess the fine habit and constitution of its parent, and to have flowers four inches and a half in diameter. Should it fulfil these conditions there is no doubt that it will be a great acquisition. We are informed by a friend at Lyons, that of the roses sent out last season two of the greatest favourites in France are *Madame George Schwartz* and *Andre Dунанд*. The former was figured by us in our last volume. We then expressed the same opinion with regard to this country.

SPRING CATALOGUES.

THESE are now being brought out in considerable numbers, and exhibit their usual tempting lists of novelties in vegetables, and flower-seeds, and plants. Indeed the amount of novelties is most perplexing, and it is impossible even to enumerate them.

Messrs. James Veitch and Sons' Catalogue is illustrated with a large colour-printed plate, and contains amongst other novelties Veitch's Autumn Great Cauliflower, Sutton's *Perfection Broccoli*, Major Clarke's *Solid Red Celery*; and in flower-seeds, *Celossi Huttoni*, *Amaranthus Salicifolia*, *Solanum Capsicum Yellow Gem*, &c.

Messrs. Sutton and Sons' (of Reading) *Amateur Guide* is as usual replete with information, containing some very beautiful woodcuts of vegetables and flowers; also a coloured plate of their *Red Skin Flower Ball*, and *New Hundredfold Fluke Potato*, and good woodcuts of new Peas, amongst them *Emerald Gem*, which we believe to be a valuable early pea.

Messrs. Dick Radclyffe and Co.'s excellent and neat Catalogue contains a complete list of vegetables and flower-seeds, and especially garden requisites and decorations, for which this firm is noted.

Mr B. Williams* is a copious and well arranged Catalogue, comprising also many novelties for the vegetable and flower-garden.

Messrs Carter and Co.'s Yade Mecum is very full of information, giving a valuable calendar of operations and other matters of interest. There is a vast number of novelties of really valuable character. The amateur may here learn what to get, and then how to grow it. It is largely illustrated with coloured plates and woodcuts.

Messrs. Ban- and Sugden's " Descriptive Spring Catalogue of Choice Seeds for Flower and Kitchen Garden" is as complete as usual. From it we extract the following remarks on Beet, which, though not within our special province, cannot fail to be useful, interested as we all are or ought to be in this wholesome and agreeable root:—

"In the process of cooking, Beet is frequently made hard and unedible, and the Beedsman or gardener made to bear the consequences of the cook's shortcomings. Following up our experimental trials, we have looked into the cook's department, and offer to our readers the following conclusions —

" 1. In preparing Beet for cooking, the greatest care must be taken not to bruise the skin, or in any way wound the root; and if by accident any injury has been done to the root, bake and not boil.

" 8. If a deep crimson hue is the colour preferred in the Beet, or a firm flesh, this is best attained by baking the roots.

" 3. If a light, dear bright colour is desired, or a soft, juicy flesh, then boiling will secure this

" 4. If a rich, agreeable flavour is sought for, then select the Beet which, before cooking, has the most purple in it, and the flavour may be discovered by masticating a small portion of the uncooked root. If upon the mark it will leave a rich agreeable flavour on the palate without any sensation of astringency in the throat

" 5. Crimson-fleshed Beets are all very rich in flavour; but when masticated uncooked, an astringency will be discovered as above described, the class of Beets, however, has its advantages, inasmuch as it can be sown earlier

" 6. Scarlet-fleshed Beets possess least of the saccharine flavour."

FORTHCOMING HORTICULTURAL EXHIBITIONS.

MAHY are announced in various parts of the kingdom, and there is much of promise in connexion with those about the metropolis, although we think some serious mistakes are made. One of the prominent features of the Royal Horticultural Society's Shows is that of the special prizes offered by either nurserymen or amateurs. Foremost amongst these we must notice that Messrs. J. Veitch and Sons offer prizes of 100*l.* for the finest fruit grown by the gardeners of Great Britain—viz., 251*l.*, 152*l.*, and 101*l.* for the first, second, and third prizes for the best collections; 101*l.* for the best collection of black grapes, 102*l.* for the best collection of white grapes, 10*l.* for the best three pine apples, 5*l.* for the best dish of peaches, 5*l.* for the best dish of nectarines. Mr. Bull, of Chelsea, offers 900*l.* in silver cups for new plants, for the next three years, 1001*l.* in each year, on the following conditions:—The value of 50*l.* at the principal Show to be held at Kensington in June, and the value of 50*l.* at the Society's Provincial Show, which takes place this year at Bath, on June 24th to 28th, the 50*l.* to be divided thus:—For private growers, first

prize, 12*l.*; second, 8*l.*; and third, 5*l.*; and to nurserymen the same; the competition to take place with twelve plants of Mr. Bull's introduction, and sent out since the commencement of 1870, this date being altered in subsequent years to 1871 and 1872 respectively, as announced in his annual catalogues. Besides this, Messrs. Carter and Co. offer their Challenge Cup and the same number of prizes for vegetables as last season. Mr. Fearson, of Chilwell, offers 5*l.* for twelve Zonal Pelargoniums sent out by him, and Dr. Denny the same. In fact, there is no saying whereunto this will grow: it affords great encouragement to growers, and at the same time gives facilities for comparing the value of the productions of different caterers for the public taste.

REVIEW.

*Journal of the Royal Horticultural Society of London**

Vol. III. Parts 11 and 12.

THE fitful manner in which this journal comes out detracts somewhat from its value; the present part contains some very interesting scientific papers, and also some reports on some flowers and vegetables grown at Chiswick; that on the Pelargoniums is especially valuable. The report on Peas contains what we cannot but consider some serious mistakes, especially in reference to Button's *Firat-of-AU*, or *Emerald Gem*, which is said there to be the same as *Danecraft's Rival*, whereas, according to Messrs. Sutton, it is ten days earlier, has larger pods, and a better constitution. Amongst the most valuable papers is one by Dr. Masters, on the influence of various manures on different species of plants; it is a continuation of a report made in 1870, and enters most minutely into the subject, with that patient attention to all scientific minutiae which characterizes everything which that accomplished botanist undertakes.

GARDEN ECONOMICS.

WEED ERADICATOR.

THIS simple but most effective instrument, of which a drawing is here given, has been forwarded to us by Messrs. Dick Radclyffe and Co., of Holborn. *



Having unfortunately a lawn in which plantain is rampant we immediately set to work with it, and can testify to its efficacy. The leverage is so good that it lifts the plants completely out, without disturbing the roots of the grass. To a lady who works in her own garden it will be inestimable, as the weeding can be done without the necessity of stooping.

THE FLOKAL MAGAZINE.

NEW SERIES.]

MARCH, 1873.

[No. 15.

EXHIBITIONS.

ROYAL HORTICULTURAL SOCIETY.

FEBRUARY 12.

THANKS to some of our enterprising nurserymen about London—such as Messrs. Veitch, Bull, Williams, &c.—a very excellent Show was held at the Council-room on the day named, although there was not much of novelty in the subjects exhibited. First-class certificates were awarded to Mr. William Bull, for *Encephalartus villosus var. ampliatus*, an exceedingly handsome plant; to Mr. Denning, gardener to Lord Londesborough, for a fine variety of *Lselia autumnalis*; to Mr. Goddard, gardener to H. Little, Esq., Twickenham, for *Cyclamen persicum* White Perfection, a large well-formed flower of the purest white; and to Messrs. Jackman and Sons, Woking, for *Thuja occidentalis aurea*, a beautiful golden variety of great interest and beauty. Many cultural commendations were given, some deservedly, and others in which it was very questionable; especially is that the case with cut blooms, for it can never be told whether the *culture* of the plant from which they have been taken is good or bad.

THE ROYAL HORTICULTURAL SOCIETY.

A CRISIS has at last come in the affairs of this unfortunate Society; we say unfortunate, because some of the evils from which it is suffering are clearly to be traced to external causes, although others are the result of its own mismanagement. When the Society was reorganized previous to the Exhibition of 1862, the ground on which it now exists was leased to the Society by the Commissioners of 1851, and the present buildings were erected; it was even then seen that in the minds of the Commissioners the one idea was that, while it might in a secondary point of view benefit the Society, it was really to be regarded as part of the plan by which the chief interest in all matters of science was to be centred around the South Kensington Museum. The placing at that Museum the collection of modern paintings, the building of the Royal Albert Hall, the proposal to receive the Natural History collection from the British Museum, the attempt to get the Herbarium from Kew there also,—all showed very unmistakably that the Commissioners of 1851 only intended that the Royal Horticultural Society should be

their very humble servant. They have quietly contrived that the Society should become their debtors to such an extent that it existed simply on sufferance, as the mortgage, so to speak, could be foreclosed at any time; moreover, by always having a sufficient number of their own body on the Council of the Society, they were able to manage its affairs in accordance with their ideas. But without the consent of either of these bodies a state of things has grown up which has upset all their calculations. A large number of persons who live in the neighbourhood, but who have no taste for botany or horticulture, have found the gardens a convenient and quiet place to send their nurses and children to saunter in of a morning, or for themselves of an afternoon. They have felt a good deal put out about the influx of visitors from the International Exhibitions, and consider it rather an abuse of their privileges. The Commissioners of 1851, not satisfied with the present management, have just issued a document in which they propose great alterations, making the Society still more their servants, and throwing the gardens open to all visitors to the Exhibition. This has aroused the ire of two parties—the horticultural section of the Fellows, who have hitherto received but little favour from the Council, but who see in this attempt an endeavour to swamp that body by the Commissioners, and to make it by that means of still less use to horticulture; while the Fellows who live in the neighbourhood are up in arms, and the consequence has been that the annual meeting on the 11th, and the adjourned meeting on the 18th, have been scenes of violent recrimination, which reflect no credit upon many who took part in them. What the result may ultimately be it is impossible to foresee, but as the Commissioners of 1851 have the might on their side, it is not easy to see how the Horticultural Society can do aught but acquiesce in these plans. It may be safely said that never had a Society such a chance of success as the Royal Horticultural Society had, and never have advantages been so thrown away.

SPRING FLOWERS AT THE CRYSTAL PALACE.

THE Exhibition of Spring Flowers at the Crystal Palace will, says a contemporary, be opened some time next month; and we hear that Messrs. Downie, Laird, and Laing will also at the same time have a Spring

Show at their own Crystal Palace at Edinburgh. We may mention, in connexion with this firm, that their employés recently invited Messrs. Downie and Laird (the members of the firm resident in Edinburgh), as a mark of their appreciation of the kindness and liberality of the treatment they receive, to a supper at Newhaven (a marine village near Edinburgh), where they enjoyed a most agreeable evening. It is eminently satisfactory, in these striking times, to know that mutual good feeling between masters and men has not become quite extinct.

REVIEW.

The Eandy-Book of Fruit Culture under Gloat. By
DAVID THOMSON. Blackwood & Sous.

THE name of David Thomson is so well known to Horticulturists, his "Handy-Book of the Flower Garden," and other works, have so convinced the horticultural public of his thorough knowledge and practical skill, that it does not require us to say that his book is sure to be welcomed by a large circle of readers. His object, as detailed in his preface, is to supply a handy-book of moderate size, which shall enter into the forcing and general culture of those fruita which are usually so cultivated; and he has very wisely "kept in view the requirements of inexperienced amateurs who wish to superintend their own fruit-houses, and of young gardeners entering on the study of their profession."

The fruits he describes the culture of are—the Pine Apple, the Grape Vine, Peach and Nectarine, Melon, Strawberry and Cucumber. Let us take one of these, the Strawberry, and see how he treats it. He outers upon the question which are the best runners, how to prepare them for the fruiting-pots, the kind of soil and how the potting is to be done; then a description of the strawberry-house, and how they are to be forced, the setting and thinning of the fruit, the insects to which they are subject; how to grow strawberries in a greenhouse or pit, the tying-up of the fruit-stalks, how to pack ripe strawberries for carrying, to prepare them for exhibition, and the beet varieties for forcing: it will thus be seen that no one point of interest has been omitted, and in order to show the clear manner in which his information is given we extract the following:—

"I will suppose the 1st of January to have arrived, the time when the earliest are, in the majority of cases, placed in heat. Let the required number of the best plants in 5-inch pots be selected, all the brown and much spotted leaves picked off them, their pots washed clean, and if the roots appear rather bare, freely top-dress them with a little fine loam and well-rotted oow-manure in equal parts. If, as has already been recom-

mended, a light pit with a bed of warm leaves is at command, plunge the pots in it, so that they may get a slight degree of bottom-heat. Keep the night temperature ranging from 50° to 65°, according as the weather is cold or mild; with sun heat 8° or 10° more may be allowed. A close stagnant atmosphere is most antagonistic to the strawberry, consequently give more or less air every day, leaving a very little on all night when mild. Being plunged in moist leaves watering will not often be required, but it must be attended to before the plants get too dry, so as just to keep the soil moist without being wet. As soon as ever the blooms can be discerned in the centres of the crowns increase the heat a few degrees, but do not exceed 60° in mild weather. When the trusses are distinctly perfected remove the plants to a shelf near the glass, in any situation where the night temperature ranges 60°, with 10° more by day. Avoid putting them where they will be subject to currents of cold air, or where on the other hand the atmosphere is close and very moist, such as a plant-house."

IN a letter from Professor Owen, who is now the guest of the Khedive in Egypt, we learn so much of the beauty of the gardens of that country in winter, that we almost wish we could exchange places with the swallows, who are enabled so easily to escape from disagreeable regions in winter to enjoy a better climate. The Professor describes the garden which surrounds his residence as being full of Mignonette, Zinnias, Marigolds, Beans, Hoses, bedding plants, and many other of our summer favourites, all in full sweet bloom.—*The Garden.*

THSBE is a plant of *Dendrobium Hillii* now blossoming in the cool Orchid-house of the Royal Gardens, Kew, which has 20 flower-spikes, each measunnng from 18 to 21 inches long. The number of individual flowers at present on the plant is over 2500.—*Gardener? Chronicle.*

CATALOGUES RECEIVED.

Messrs. Hooper and Co., Covent Garden.—As usual, a comprehensive and well illustrated catalogue, and replete with information.

P. G. Henderson and Co., Catalogue of Flower, Vegetable and Agricultural Seeds.—One of the most extensive catalogues published, and containing many novelties of their own introduction, besides those of other growers.

Siwtntta to ContspotrJtnts.

CAPL. H.—See advertisement of "The Gladiolus" in the preant number

Y A.—We have given our opinion on the appearance of the Rose* on seedling bnen; we hope by-and-by to say what they are practically

T.—The Lachenahaa are pretty aprmg flowers, and very eauly cultivated; any nonerymin can supply bulbs.

THE ELOKAL MAGAZINE.

NEW SERIES:]

APRIL, 1873.

[No. 16.

EXHIBITIONS.

ROYAL HORTICULTURAL SOCIETY.

MARCH 5.

IN the midst of the turmoil and confusion that prevail in the affairs of this Society, it is satisfactory to find that those who are interested in its welfare as the rallying-point for Horticulture feel in no way inclined to desert their place, for a better show, for the season of the year, has not been held at South Kensington. The collection of Cyclamens alone was worth a long journey to see; while the splendid Orchids of Lord Londesborough, and the collections of Messrs. Veitch, Williams, Bull, Standish, and others, contributed to make a grand display. We are thoroughly convinced that such a collection of Cyclamens as that exhibited by Mr. Little, of Twickenham, was never brought together before; and he must now certainly be placed as our very foremost cultivator.

The novelties which received certificates were, *Odontoglossum nebulosum pardinum*, having the sepals and petals densely covered with large brown spots, and a great improvement on the normal flower; this was exhibited by Messrs. Veitch and Son. Another *Odontoglossum*, exhibited by Mr. C. May, gardener to J. S. Brockett, Esq., Muswell Hill, with large pale yellow and brown flowers, but not yet named. *Laelia* sp. very closely resembling *L. cinnabarina*, but distinct from it in some respects, also exhibited by Messrs. Veitch. A very pretty *Primula*, called Violet Gem, shown by Mr. Richard Dean, Baling, and another *Primula*, *vulgaris auriculaeflora*, dark maroon in colour (these are likely to be very useful for winter flowering, and we hope to figure them before long). *Agave Kerchovii*, *Agave Baxterii*, and *Agave pulchella*, exhibited by Mr. Croucher, gardener to J. Peacock, Esq., Sudbury House, Hammersmith; the latter was also exhibited, in better condition, by Mr. Green, gardener to W. Wilson Saunders, Esq., Reigate. It will be thus seen that in the various departments of stove, greenhouse, and hardy plants there are novelties still forthcoming.

MARCH 19.

This, which was the first of the Spring Shows, was held in the South Arcade, adjoining the conservatory; and in spite of the bitterly cold weather, there was an excellent display of flowers and plants, more especially of

Hyacinths, of which there was a grand display; and a large number of visitors showed their appreciation, if not of the flowers, at any rate of the excellence of the band, and the beauty of the conservatory, which looked its best.

Amongst nurserymen the most successful exhibitors were Messrs. Veitch and Son of Chelsea, who exhibited, especially in their collection of eighteen varieties, as good spikes as we have ever seen exhibited; amongst them were fine blooms of *Vuurbaak*, *Koh-i-noor*, *Macaulay*, *La Grandesse*, *Florence Nightingale*, *Garibaldi*, *General Havelock*, *Grand Lilas*, &c. Messrs. William Cutbush and Son also sent some fine collections—gaining second prize. Among amateurs the first prizes were taken by Mr. Whittal, Addison Road, who had the finest *Vuurbaak* we have ever seen, and the Rev. H. H. Dombain, who had fine spiked of *Macaulay*, *Alba Maxima*, *Grand Lilas*, and *Tubifbra*. There were several new Hyacinths shown by Mr. Douglas, gardener to Francis Whitburne, Esq., of Loxford Hall, Ilford, who obtained a first-class certificate for *Prince of Wales*, very dark blue. Messrs. Veitch and Son also exhibited a set of six, amongst which *Mazzini*, a pale lavender-blue, with enormous bells, was also awarded a first-class certificate. The same award was made to Mr. Maurice Young, of Milford Nursery, Godalming, for a very fine green *Aucuba*, full of large, brilliant-coloured berries; and to Messrs. Waterer for a curious variety of the common heath, the foliage of which becomes brilliantly red in October, and so continues during the winter months, making it a very desirable plant for the winter garden. A magnificent box of blooms of *Marshal Niel* rose was sent by Mr. Cranston, as fine as could be had at any time of the year, and which were cut from a two-year-old plant on the *Manette*. *Tricolour pelargoniums* were also exhibited, but it was too early for them, and the exceedingly dull weather had materially prevented their acquiring the brilliant colouring which is their chief merit. The first prize was won by Mr. H. Little of Twickenham, Miscellaneous collections were contributed by Lord Londesborough (of Orchids), Messrs. Standish and Co. of Lilies of the Valley (admirably done); *Azaleas*, *Roses*, &c, Messrs. Veitch and Son, Mr. W. Bull, Mr. B. S. Williams, and others. So there was much of interest, although there were fewer novelties exhibited than on any occasion that we remember.

ROYAL HORTICULTURAL SOCIETY.

THE imbroglio that has taken place in the affairs of this Society seems to present some curious difficulties. The persons who moved in the matter hardly know what use to make of their victory; while horticulturists pure and simple, begin to see what we have all along felt, that neither from the Commissioners of 1851, nor from the party who led the onslaught, need they expect any great deference to their wishes, the simple fact being that things would have gone on as before had not those Fellows who live in the neighbourhood, and who care nothing for horticulture, seen in the proposed liberal arrangements for the frequenters of the Exhibition of 1873 an infringement of what they considered their right of having the gardens as a nice private promenade for themselves and their children. The Society is too deeply involved with the Commissioners of 1851 to be able to make any very independent stand. It cannot possibly exist without them, unless they agree to some liberal terms, by which the Society might be freed from its embarrassments, the Gardens handed over to the Commissioners, and a subsidy paid for the expense of the fortnightly meetings and the Shows generally. The Council feeling that the vote of the last meeting was one of want of confidence, resigned in a body. It was then found that they had no power to do so, and some alterations in the bye-laws, to meet the emergency, are proposed. Although we have long felt the want of a real appreciation of the true interests of horticulture, yet we are thoroughly alive to the difficulties with which they have to contend; and we trust that at this period of difficulty conciliatory feelings will prevail, so that the Society may emerge from the crisis established on a better basis, and that it will become more truly what it ought to be—the central body of practical and scientific horticulture in the world.

MANLEY HALL.

No lover of plants can have noticed the advertisements which have during the autumn and winter months appeared in the horticultural papers, announcing the dispersion of this most valuable collection, without a deep feeling of regret, similar to that with which we see the scattering of some world-famed collection of pictures or books. Mr. Mendel has been for so long a time known as one of the most munificent patrons of horticulture, and his unvalued collection has been so liberally thrown open to the public, that no subject has been amongst horticulturists more deeply lamented than the sale which is to take place next month. It was only last year that we

ourselves were made acquainted with its treasures, but being at Manchester on the occasion of the great Whitsuntide Exhibition, we took the opportunity, by the kind permission of the owner, to go through the vast range of houses in company with the able and intelligent gardener, Mr. Fetch, under whose care it was. As we went through house after house, through marvellous collections of Orchids, stove and greenhouse plants, through hardy and exotic ferneries, where nature had been most closely imitated, and then through ranges of fruit-houses, &c., we were fain to acknowledge that what a very eminent horticulturist had said to us before going there was true—"Take the three largest places you have ever seen, and you can put them into Manley Hall." And it was not merely size that marked it, but everything was well done: the plants were clean and healthy, and many of them of such dimensions as are not often seen. We shall watch with interest the account of the sale, of whose magnitude some notion may be formed from the fact that it will require a fortnight for its completion, and which will doubtless draw to it the most eminent cultivators both of the United Kingdom and the Continent of Europe.

REVIEW.

The Gladiolus: its History, Cultivation, and Exhibition.

By the Rev. H. H. DOMBEAIN, B.A. L. Reeve & Co.

THIS little brochure—the first, we believe, of a series—from an experienced and practical hand, will be a most acceptable boon to the growers and lovers of flowers, containing as it does in a small compass and at a small price just that precise information which we often long for but do not know where to find. Frequently might the failure and disappointment which too often follow the efforts of the grower, especially the amateur, be converted into success and gratification by a little knowledge at the right time. This is just what is supplied as regards the Gladiolus in the manual before us. The first chapter gives a brief history of the plant as a cultivated flower, which, as such, is comparatively modern. The second treats of culture, and contains minute and valuable directions as to soil, planting, treatment, culture of offsets, raising seedlings, and harvesting the corms. The third gives useful hints for exhibiting. The fourth treats of disease, its causes and remedies. The fifth describes the character of a good Gladiolus; and the sixth furnishes hints for the choice of sorts, and concludes with three full lists: the first enumerating those suitable for exhibition; the second, choice sorts for cultivation; the third, cheap showy flowers for the border.—F.L. S.

THE FLOEAL MAGAZINE.

NEW SERIES.]

MAY, 1873.

[No. 17.

EXHIBITIONS.

ROYAL HORTICULTURAL SOCIETY.

APRIL 2.

Tins' Exhibition, although by no means equal to the previous one, when the Hyacinths made so gorgeous a display, was yet very interesting; although, as it often happens at these minor Shows, the miscellaneous collections were of greater interest than those for which prizes were offered. Amongst the objects of interest exhibited before the Floral Committee were several of the new Roses, some of which obtained first-class certificates. The new white Rose which has been so highly spoken of as a white Jules Margottin was exhibited by Mr. H. Bennett, of Stapleford, near Cambridge, and Mr. William Paul, of Cheshunt, but was passed over by the Committee—for as exhibited Madame Lacharme was certainly not white, nor did it seem as if it would be perpetual, being rather too much in foliage like Miss Ingram. Mr. Bennett also obtained first-class certificates for Richard Wallace, a large globular flower, bright carmine rose; Madame Jules Margottin (Tea), a very bright and pretty canary-coloured flower, but not large; President Thiers, large deep red, but not good in form; and Lyonnais, very full light Rose, but too washy for general taste. This was also exhibited by Paul and Son, who had also Etienne L&vet, in our judgment deserving of recognition, although passed by. The most novel Rose in the Exhibition was, however, Cheshunt Hybrid, exhibited by Messrs. Paul and Son, a cross between Tea Rose Madame Tartas, hybridized with Prince Camille de Rohan. It promises to be especially valuable as a pot Rose. Certificates were also awarded to Mr. J. Brown, gardener to A. J. Waterton, Esq., Ileigate, for Hippeastrum Beauty of Reigate, rich in colour, although deficient in form; to G. F. Wilson, Esq., for Primula purpurea, the exact status of which was, however, doubtful.

APRIL 16.

Although this was called an Auricula Show, the Auriculas formed but a very small portion of it, the season having been a very unfavourable one for them, especially as to their period of blooming. We have grown the Auricula now for thirty-five years, and we do not think that we ever saw it so late as it has been this season. Last year at this time our collection was in full bloom,

while on the present occasion, out of a collection of three hundred plants, we had not six in bloom; and that this was general may be inferred from the fact that there were only three exhibitors. But the miscellaneous collection as usual helped to fill the arcade where the show was held, and for the other objects for which prizes were offered some fine collections were staged. Amongst other matters plants for table decoration were exhibited, and we were glad to see that preference was given by the Judges to foliage above flowers. Amongst the subjects submitted to the Floral Committee were some splendid plants of Mr. Jackman's new Clematises; and certificates were awarded to the following:—Queen, lilac; Vesta, pure white; Stella, lilac with a purple band; and Fair Rosamond, white with red anthers. Messrs. E. S. Henderson and Son had a first-class certificate for Camellia Princess Alexandra, blush, broadly flaked and blotched with carmine rose. A new Hybrid perpetual Rose, Mons. Claude Levet, was exhibited by Messrs. Paul and Son and by Mr. Wm. Paul, and obtained a first-class certificate. It is a finely-shaped purplish crimson flower. Certificates were also awarded to Messrs. Veitch and Son for Tricophila lepida; and to Mr. Wm. Paul for a new Tea Rose, Madame Camille Bernard, cream with a coppery tinge. Mr. Charles Turner had certificates for Cineraria, Mrs. Lasclles and Princess Christian; the first has a purplish crimson ring round a white centre and dark disk, the second somewhat similar, but smaller.

FORTHCOMING EXHIBITIONS.

WE do not think that the lovers of horticulture can complain that no patronage is afforded to their favourites. The schedule for the Provincial Show of the Royal Horticultural Society, to be held at Bath, is issued, and upwards of 1900/. is offered in prizes; the Alexandra Park is to be opened on her Majesty's birthday, May 24th, with a grand Show, at which 1800/. is offered; then a grand International Fruit and Flower Show is to be held at Manchester in September, at which upwards of 1200/. is to be offered for fruit, vegetables, and flowers. We believe that the Metropolitan Floral Society's Show is likely to be held at the Alexandra Park..

THE TOM THUMB YELLOW WALLFLOWER.

Aifid the multiplicity of names with which this pretty wallflower lina been associated, I can find none that BO fittingly expresses its true character as does the designation of "Tom Thumb," as it is so dwarf and compact, provided that one has the right strain. We have heard of it as the Belvoir Castle Yellow, Paul's Waltham Yellow, Carter's Tom Thumb Yellow, and goodness knows how many more aliases, but it would be difficult to declare to whom the credit of its raising or introduction was due, although, I believe, attention was first drawn to its merits by the large use made of it by Mr. Ingram at Belvoir. In human life the more aliases a man has the bigger rogue he may be assumed to be. In horticulture, however, we find that if anything, be it flower or vegetable, bos a number of different designations, it mny be accepted as a rule that it is *a* really good thing, and this is undoubtedly the case with the Tom Thumb Wallflower. My plants of it, from eight inches to nine inches in height, were bursting into flower of a rich golden hue at the end of February, and for a long time past have been n blaze of golden yellow. The rules of management are of the simplest. Sovrn in the open ground thinly early in April, the plants arc put into their permanent quarters in the autumn thickly to make a mass, holding some in reserve to fill up vacancies if needed.—D. B.: *Gardeners Magazine*.

REVIEWS.

Stove ami Greenhouse Flowering Plants. By B. S. WILLIAMS, F.R.H.S., Sec. &c. Second Edition, enlarged, illustrated, and revised.

We are not at all surprised that this treatise should have already passed into a second edition; it w EO plain, practical, and at the same tune so thoroughly sound, that it must form the standard manual for all who desire to have accurate information as to description and culture of stove plants. It contains desciiptions of upwards of eleven hundred species and varieties, and of its popularity we are assured by the fact of tins second editura. Mr. Williams modestly sap in his Preface: "The frequent assurances which I have received from amateurs and gardeners of the benefits they have derived from a perusal of its pages, combined with the continued demand, have induced me to publish this second edition, and in doing so I have taken the opportunity to enumerate several species which were unfortunately overlooked, and also to odd various kinds of sterling merit which have been introduced to this country and brought into commeice since the publication of the former edition,

whilst to render it more complete and interesting to amateurs (especially to those who have recently become converts to this delightful pursuit) a few illustrations of new and beautiful flowering plants have been added."

The high position that Mr. Williams has taken as a nurseryman and exhibitor is a sufficient guarantee that the information afforded is just what is wanted, and we hope soon to see that a second edition of the "Foliage Plants" is also called for.

Handbook of Hardy Trees, Shrubs, and Herbaceous Plants.

From the French Work of Decaisne and Naudin. By W. B. HEMSLET. Longmans & Co.

THIS is a book for gardeners and amateurs who wish to know something about the plants they cultivate and admire. It is designed, according to the preface," to furnish something between a mere dictionary of names and a scientific treatise containing nothing beyond technical descriptions of plants." It gives descriptions, sufficient for the psrsons for whom it is designed, of the principal trees, Bhrubs, and plants cultivated for ornamental purposes in this country, arranged in their natural orders, with occasional remarks on their geography and history. This part is illustrated by a series of 261 well-executed wood-engravingH, which give a good idea of tho habit or general appearance of the plants figured, but contain no structural details. The second part of the work treats of Practical Gardening, and contains much that will be useful to the beginner or amateur. While the first pait is not complete enough for the botanist, and the practical gardener will not find much in the second w luck he does not already know, both parts contain much valuable information in a form more accessible and convenient for beginners and amateurs than larger nud more technical treatises, and to them we can cordially recommend the volume, feeling assured that those who master its contents will both desire and be prepared for higher knowledge.

F. L. S.

The *Gardener's Chronicle* says: "We have to record the flowering of *Grcyia Sutherlandi* in the Chelsea Botanic Garden. It is a fine Cape shrub, with bioad, tabulate leaves, and dense terminal racemes of deep crimson ilowers. Some botanical interest attaches to the plant, as the founders of the genus, Doctors Hooker and Harvey, were not agreed as to its natural affinities. The latter referred it to *Saxifragacte*, and described the ovary as 1-celled; but an examination of the fresh flowers shows it to be 3-celled, and otherwise confirms Dr Hooker's view of its close affinity with *Melianthua*. A figure of it will probably appear in an early number of the *Botanical Magazine***

THE IXOKAL MAGAZINE.

NEW SERIES.]

JUNE, 1873.

[No. 18.

EXHIBITIONS.

ROYAL HORTICULTURAL SOCIETY.

MAY 7.

THERE can be little doubt that, whatever may be the future proceedings of the Council of this Society, no more unwise thing could be done than to diminish the attractions of these fortnightly meetings, for they invariably bring together a large number of the very choicest productions, and give the opportunity to all lovers of horticulture of meeting together. The last two Shows, especially that of May 7th, were remarkably good; and although no more miserable place than the Arcades could possibly be devised for exhibiting plants in, yet even this did not prevent a large company from admiring the wonders of cultivation placed before them. As it would be impossible to give anything like a detailed account of the exhibits, we shall as usual confine ourselves to noticing those which, as novelties, received certificates. First and foremost, we must place the splendid *Odontoglossum vexillarium*, exhibited by Messrs. Veitch and Sons. Anything more exquisitely lovely than this orchid, which we hope to figure in our next Number, cannot possibly be imagined; and no doubt, by-and-by, when it has received higher cultivation, it will, as many more have, be still more beautiful. To the same firm certificates were also awarded for *Phoenix rupicola*, a handsome bright greenhouse palm; for *Platyoma brachypterum* and *Platyoma bellum*; for *Sempervivum triste*, and for a free-flowering *Azalea*, *Triomphe de Wandlewhem*, a semi-double variety, salmon colour, more remarkable for its free flowering habit than for any qualities as a florist's flower. Mr. Bull received first-class certificates for a very bright *Begonia* of the *Chelsoni* and *Sedeni* type, named *Sunrise*, of a peculiarly pleasing shade of colour; also for *Colax Jugosus*, a pretty orchid from the Brazils; the sepals cream colour, petals white, marked with purple, and the tip spotted and striped with the same colour. That curious and beautiful tribe of Orchids, *Masdevallia*, received also a valuable addition in *Masdevallia Denisonii*, exhibited by Mr. Denning, gardener to Lord Londesborough, and to which a first-class certificate was awarded. *Auriculas* were shown in large numbers, and a large number of certificates were awarded, especially in Alpines—we almost think with too lavish a hand, for beautiful as many of them were, they were very similar to many previously

certificated. First-class certificates were awarded to Charles J. Perry, called after our lamented friend, a beautiful bright purplish-blue flower of good habit, having perhaps the fault of a rather angular paste, but still a fine flower: this was exhibited by Mr. Charles Turner, the raiser. A first-class certificate was also awarded to the Rev. H. H. Dombain for a fine grey-edged seedling raised by Mr. Headly, of Stapleford, near Cambridge, called Charles E. Brown; it had been distributed by the late Mr. George Lightbody, but has never before been exhibited near London. Cantab, another seedling of Mr. Headly's, and exhibited by Mr. Charles Turner, also obtained a first-class certificate as a dark maroon self, as did also the Rev. A. Matthews, and the following Alpines:—*Napoleon III.*, *Sir Bartle Frere*, *Diamond*, *Apollo*, *Lady Elvey*, *Susie Matthews*, and *Queen Victoria*. The same award was given to a white-flowered zonal *Pelargonium*, called *White Clipper*, exhibited by Mr. Must. The following new *Roses* also received first-class certificates:—*Claude Levet*, a large, bold, bright-coloured carmine red flower, of which we have already spokeu; *Maxime de la Rochette*, shaded red, pale on the edges, with a vigorous habit; *Souvenir de Monplaisir* (*Tea*), delicate yellow, deeper in the centre, very fine blooming. *Etienne Levet*, *Cheshunt Hybrid*, and *Lyonnais*, which have already been noticed, were also in fine condition; so that there is evidently no lack of novelties in the various departments of horticulture represented at these Exhibitions.

GARDEN ECONOMICS.

THE ARCHIMEDEAN LAWN-MOWER.

WE have lately had the opportunity of judging on our own lawn of the valuable properties of this American invention. We had heard a great deal *pro* and *con*. and as it introduced a new principle, it was not unlikely that a good deal would be said against it: that principle was to leave the mowings on the lawn. This was represented as untidy, &c.; and in order to meet this prejudice it has been somewhat modified, a grass-box being now sent out with it. It possesses a great many advantages, one being that grass can be cut with it when it is both long and wet, whereas with the ordinary lawn-mowers one has always to wait for dry weather, and in a dripping season may be unable to get on the

lawn for days together. It is also very easily worked; a boy of twelve or thirteen can use a 14-inch mower with great ease; moreover, it cuts closer than any machine we have used previously, and does not leave any strands of grass, which are always very unsightly. Provided with one of these, and one of Follows and Bates' small Climax mowers for edgings, no one need ever make the excuse that it is difficult to keep a lawn in order; and when we recollect the old days, when the scythe was the only implement that could be used, and how few men could properly wield it, we feel that we are fallen on good days when work can be so easily got through with the many new inventions from time to time introduced by home and foreign inventors.

REVIEWS.

A General System of Botany, Descriptive and Analytical.

By EMM. LB MAOUT and J. DECAISNE. Translated by Mrs. HOOKED, and edited, with additions, by Dr. HOOKKB. Longmans and Co.

THE English student will be grateful to the translator and editor for presenting him with this valuable work in a truly English dress. Though confessedly a translation, it is to a considerable extent a new and original work. In the first place, the matter is rearranged in accordance with the plan adopted in English schools. Secondly, twenty-four orders omitted in the original, and a conspectus of orders arranged in groups, are added. Thirdly, a terse and concise English style of expression replaces the diffuse and wordy style of the French, which, though it may not be without its use in the lecture-room in permitting the mind to dwell longer upon and thus grasp more firmly the ideas to be conveyed, is tedious in a book, where conciseness and precision are most favourable to clearness of conception. The work is divided into two parts—the first treating of the Organo-graphy, Anatomy, and Physiology of Plants; the second giving Descriptions and Illustrations of the Orders. To these are added an Appendix by the Editor, comprising a brief History of the Natural Method of Classification and a Synopsis of the Classes, Subclasses, Cohorts, and Orders. Three good Indexes—one of technical terms, another of names, &c., and the third of plants mentioned for their uses—conclude the volume. The woodcuts, 5500 in number, and constituting one-third of the volume, are good, and in some cases beautiful, but as a whole do not equal in artistic beauty and finish the aeries illustrating M. Baillon's "Natural History of Plants," now in course of publication.—F. L. S.

Select Ferns and Lycopods, British and Exotic; comprising descriptions of one hundred and fifty choice species and varieties, fyc. 8fc. By BENJAMIN SAMUEL WILLIAMS, FR.H.S. London: Published and sold by the Author.

THIS handsome and compendious treatise, the work of Mr. Williams, of the Victoria and Paradise Nursery, is now, in this its second edition, made even more acceptable than the former one, to which fern-growers have for some time been in the habit of looking as their authority in all matters connected with their culture. We have to congratulate Mr. Williams on his success as an author, of which we are not indeed surprised, for he manages to combine both theory and practice. In his preface he modestly says, "That the rapid circulation of the former large issue of the work fully proves that it has met the wants of amateurs, and the continued demand necessitates the publication of a second edition. In this my readers will find added such of the newly introduced species and varieties of these charming plants as have proved to be worthy of a place in every choice collection."

In the arrangement of his book Mr. Williams gives us instructions as to the making of a fernery, how to grow them in baskets, in pots, or the open air; he also enters on the subject of ferns suitable for the decoration of the dinner-table; how to grow them in cases; lists suitable for Wardian cases; while copious indices, both of the foreign and British ferns, are also given. A number of illustrations add to the value and beauty of the book, and altogether it is one well worthy of a place in the library of every lover of plants.

MR. CHARLES J. PERRY.

WE cannot permit the death of this ardent florist to pass without a word of notice. His productions have so frequently enriched the pages of our Magazine—for his Verbenas stood univalled—and we have known him for so many years, that it is only due to his memory to say that a more enthusiastic florist never lived. As a raiser of Verbenas and Dahlias his name will be long remembered, while as an exhibitor, he took in Leeds, Birmingham, London, &c., a very distinguished place. We regret to say that his latter days were very sad, as he suffered from a complication of disorders. He will be greatly missed, not only by his family, but by a numerous circle of friends.

THE splendid collection of hardy Rhododendrons belonging to Messrs. J. Waterer and Sons, Bagshot, Surrey, which for the last twenty-three years has proved BO attractive at the Royal Botanic Gardens, Regent's Park, will this year be exhibited at the Alexandra Park, Muswell Hill, where a large space is being covered for the purpose. From the appearance of the plants the show promises to be one of the best ever seen. We understand that Messrs. Lane, of Berkhamstead, will furnish the show at the Regent's Park this summer.—*Journal of Horticulture.*

THE FLORAL MAGAZINE.

NEW SERIES.]

JULY, 1878.

[No. 19.]

EXHIBITIONS.

THESE come on in such rapid succession that it is quite impossible that we can do more than refer very briefly to them, and must notice only a few of the more salient features. The Royal Horticultural Society has held, as usual, its two Exhibitions during the month; the Royal Botanic Society its first great Show; the Crystal Palace its great Show of the season, and the ill-fated Alexandra Palace its first and only Exhibition; and all of these have attracted not only large crowds of visitors, but have brought together some rare productions of horticultural skill.

ROYAL HORTICULTURAL SOCIETY.

MAY 21.

THIS Exhibition was held in those most unsuitable places the Arcades, where there is but poor light to show off the varied beauties which are brought together. It was, however, a most excellent Show, and we may safely affirm that the most marvellous plants there—and we may add, the most wonderful results of plant-growing that we have ever seen—were those exhibited by Mr. Baines, for the Davis prize. It had often been said that he was enabled to hold the place he did because his plants were older and more fully developed; but the condition of the Davis prize was, that the plants should be purchased at a nursery, sealed by a person appointed by the Society, and exhibited two years after. There could therefore be no mistake on the subject; and here were plants which would have been considered an impossibility, had it not been seen that the conditions had been faithfully observed. Whatever doubt may have existed before, there can be none now; and although, unfortunately, owing to some blunder of the Society, there was no competition, yet these plants were such that no competitor could have ventured near so formidable an antagonist, and Mr. Baines must be placed as our foremost cultivator of stove and greenhouse plants.

JUNE 4, 5.

This (with the exception of the provincial Exhibition), the great Show of the year, was held in the large tent, and brought together a most excellent collection of plants of all kinds; and although it might have been better filled, yet on the whole it was a very pleasant Show, and a very large number of novelties were brought

forward, Mr. Bull and Messrs. Veitch, as usual, contributing a large number, and the former gentleman giving a still further stimulus to the growth of new plants by the very handsome cups which he offered for competition for new plants introduced by himself. Amongst the more remarkable plants were *Dracaena Goldiana*, with deep green leaves marked with transverse bars of white; *Bertolonia superbissima*, with leaves elegantly spotted with pink; *Odontoglossum Insleayi*, var. *Leopardinum*, more conspicuously barred than in the normal variety. These and many others were exhibited by Mr. Bull. Messrs. Veitch had *Aralia elegantissima*, *Dracaena Baptistii*, *Tillandsia Zahnii*, and others. A very remarkable small plant, and one likely to be useful, was a double form of *Lobelia pumila*, a very pretty and dwarf plant, which we hope to figure next month, and which will be a very desirable acquisition. Mr. Petridge exhibited a new *Tricolor Pelargonium*, *Marie Stuart*, but we are inclined to think that the day for these has passed by. Mr. R. Dean also exhibited a very good *Calceolaria*, which promises to be good for out-of-door work, being very dwarf and free; and also a new *Viola*, called *Lothair*, deep purplish-blue; for both of which first-class certificates were awarded.

Several new *Pelargoniums*, both show and zonal, were exhibited by Mr. Foster, Mr. Wm. Paul, Mr. George Smith, and others that we have not space to particularize; but it will be seen that there is again no lack of novelties, and that the Society still maintains its position as an encourager of horticulture in this way—that here the raisers of new things are most desirous of bringing their productions.

CRYSTAL PALACE, MAY 17.

As usual on the occasion of the great May Show, a large number of magnificent plants were exhibited, and although the novelties were few, yet the splendid collections of Mr. Baines, Mr. Ward, and others—the grand *Roses* of Mr. Charles Turner and Mr. George Paul; the *Azaleas* with their sheets of bloom; the fragrant and curious *Orchids*—all contributed to make a display which was appreciated by a larger number of visitors than on any previous May Show, while the other attractions of the Palace make it one of the most enjoyable exhibitions in the metropolis.

ALEXANDRA PARK, MAT 24.

A MELANCHOLY interest attaches to this Exhibition, owing to the calamitous fire which a fortnight afterwards, in the space of a couple of hours, reduced the whole of the building to ruins, and destroyed the hopes of those who were looking to this new place of amusement as a boon to the north end of our huge metropolis. The Exhibition was altogether one of the finest ever held in London, and the indefatigable exertions of the able Superintendent, Mr. Mackenzie, were rewarded by the presence of most of our leading exhibitors, the prize list, amounting to 1200/., being a very tempting one. The plants were to a great extent those which had been exhibited at the other great Shows; but in addition to the usual classes, the schedule included a considerable number of prizes for Dracaenas, Cyoads, Palms, Cordylines, Tree Ferns, and other ornamental plants, which, by the freshness of their foliage tended to relieve the masses of colour. Then Mr. Mackenzie had deviated from the usual plan of arrangement, for instead of placing the various groups in continuous order, they were arranged for effect, and the whole was thus made to subserve the grand purpose of making a brilliant display. This is the plan adopted on the Continent, but there the judging takes place on the previous day, and it involves an immense amount of labour on the part of the judges to get through their work before the great crowd of visitors come. This was intended to have been the first of a grand series of Exhibitions. Alas I for the present all is put a stop to; and although the Directors, with true English pluck, have determined on the rebuilding, yet for the present year at least we shall miss the grand Exhibitions they had intended to have held.

THE USE OF PALMS FOR TABLE DECORATIONS.

A GREAT deal has been said of late on the desirableness of using plants for table decorations, and of the value of Palms for that purpose; and in the exhibition for prizes which have been offered for this end, they have been largely shown. We question, however, whether this is a step in the right direction. In the first place, the eye soon wearies of looking at one object for a couple of hours, whereas a tastefully arranged stand of cut flowers, with its charming variety of form and colour, does not weary; and then, if plants are to be used, there is a stiffness about these in their young growth which militates against their use. They are by no means so graceful as ferns, and these are now so numerous, so varied in form and character, that the choice of kinds suitable for this purpose is very great. For the decoration of large rooms, halls, entrances, &c., the palms are invaluable;

but we do not feel inclined to give them a place on the dinner table.

LEE'S VICTORIA REGINA VIOLET.

THIS very fine violet, which was exhibited at one of the meetings of the Royal Horticultural Society, promises to be a valuable addition to our Urge-flowered single violets of the "Czar" type, of which it is a seedling. The flowers measure sometimes 1½ inch in diameter, and it is very sweet scented. It may also be the precursor of other flowers of a similar character; at any rate it will be prized, we think, by all who delight in this fragrant spring flower.

THE REMOVAL OF LARGE CYCADS.

THE following notice, of interest to all who value these ornamental plants, appears in the *Gardener's Chronicle*:

"The following note, received from Baron Ferd. von Mueller, the Director of the Melbourne Botanic Garden, as to the possibility of moving large Cycads, will be read with great interest. The Baron's success in removing and forwarding huge Tree Ferns is now supplemented by his good fortune with Cycads. In these days, when people's palaces augment, and the winter gardens of the wealthy multiply, the introduction of these noble plants becomes more and more important.

"It may interest some of your readers to know that I have proved the possibility of moving from distant localities very aged Cycad trunks, deprived of their leaves, and without any earth being left with their roots. Many months ago I succeeded in getting, from North Queensland, a stem of *Cycas angulata* about forty years old, which was sent as mere dead wood, like ordinary merchandize. The stem was more than a month out of the ground before it arrived here; it was planted in the centre bed of the Palm-house, and is now just pushing forth its foliage. All the Cycades are of very slow growth; to obtain a tall stately plant of any species would require many years' cultivation. This tedious process is now rendered unnecessary (as in the case of Fern trees) by shipping from native localities aged stems. For long sea voyages the trunks should be packed in cases, to prevent injury; thus the Indian and Chinese species would be rendered easily available in a fully developed state, although they do not attain the great height of one of the North-East Australian kinds. I have had large specimens of *Natal Zamias* dormant for four years, and yet after applying bottom-heat they started into growth.

"FEED, VON MUELLEB,"

Stufnerg lo CorresponDnita.

T. N.—Yes, we are surprised that the herbaceous *Calceolaria* is not more grown than it is, its treatment is not difficult, and its variety of colouring is charming. No more effective display can be made than a large number of these plants in flower in a greenhouse. There is no occasion to try and preserve the plant, but sown every year.

F. S.—We have seen a pink-flowered *Oloira* de Dqon Base, but we do not think it will be very valuable.

R. W. a.—There are no stands for the dinner-table that we prefer to that which is called the March stand.

THE FLOKAL MAGAZINE.

NEW SERIES.]

AUGUST, 1873.

[No. 20.

EXHIBITIONS.

As usual at this season of the year, these come on so rapidly and so are numerous, that in our limited space it is quite impossible to give more than a very brief resumé. The most important has been that of the ROYAL HOETICULTURAL SOCIETY AT BATH, where we have to record the usual results:—an enthusiastic attempt on the part of the residents to get up a grand Show by offering a most extensive schedule of prizes, amounting altogether to 1900/.; an earnest working out of the matter as far as the Local Committee was concerned; a series of mistakes and blundering on the part of the Horticultural Society, and an universal chorus of complaints after all is over. With an abundance of materials of the very best description, plants unequalled in the whole world, yet so badly was the tent arranged that a great portion of its beauties were placed in the background, and the grand effect greatly marred. Then, although a new Council had been elected from which great things were expected, there was no better plan devised than before for bringing horticulturists together and promoting that kindly intercourse which, in so widely diffused a body as the gardening folk of Great Britain, is most desirable; and had it not been for their own exertions, that which ought to be one of the primary objects of a meeting like this would have been entirely frustrated. Amongst the remarkable events of the Show were the contest for the premier prize of the exhibition for stove and greenhouse plants, which was awarded to Messrs. Cole and Sons, of Manchester, who successfully obtained that position in opposition to Mr. Baines, whose honours have been for once plucked from him; and the success of Mr. William Bull, of Chelsea, in obtaining the first prize for new and rare plants. The Rose Show on the Thursday was a great success, for although the season is a backward one, the West of England is so much more forward, that Mr. Cranston amongst nurserymen, the Rev. J. B. Camm, G. H. Baker, Esq., and the Rev. J. Handley, amongst amateurs, came out in great force; finer blooms than those exhibited in the leading prize stands it would be difficult to imagine.

Besides this, there have been exhibitions at South Kensington on July 2nd, when the great National Rose Show was held, and on July 16th and 17th, when a prize exhibition of Zonal Pelargoniums took place. The long arcades were filled with an immense number of varieties, the leading raisers and growers being repre-

sented—Messrs. George, Pearson, G. Smith, Dr. Denny, and others. Those who can look back on the time when Tom Thumb was a novelty, must have wondered at the change, for here were flowers as large as a crown piece, and trusses that were as large as a peony; and besides scarlet, there were crimson, white, salmon, variegated, and doubles of various shades; tricolors, which were unknown in the days to which we refer, were exhibited in large quantities, but were dull, the fact being, that for these plants, the exhibition was fixed two months too late. We believe that the great value of the tricolors will for the future be seen to be their decorative qualities in the winter months, when, in an intermediate house, their beauty of foliage is conspicuously seen, but later in the season they begin to dull; and for the same reason, we think their place in the flower garden will be taken by the bicolors, which have attained to so great perfection, especially under the care of Messrs. Downie, Laird, and Laing. We think that in Zonals the palm is due to Mr. George, who has already raised some very fine flowers, and whose exhibits on this occasion were decidedly in advance of others.

CRYSTAL PALACE ROSE SHOW.

ALTHOUGH not so extensive as we have seen it on some occasions, this, the most popular exhibition of the season (if numbers are a test of popularity), was eminently successful. Some magnificent stands of blooms were brought together, and the contest for seventy-two-blooms was very severe between the five nurserymen who exhibited; while amongst amateurs, Mr. Baker was conspicuous for the excellence of his flowers. New roses were not exhibited very extensively, but as we have alluded to them elsewhere, there is no need of further reference to them. The arrangements carried out by the new Superintendent of Flower Shows, Mr. Wilson, were excellent, and a striking contrast to the deficiencies in other places.

METROPOLITAN SOCIETY'S AUTUMN SHOW.

WE have much pleasure in announcing that this show will be held as usual in the last week in August, but the scene will be changed. It has hitherto been held at the Crystal Palace, but this year it will be at the Royal

Surrey Zoological Gardens. Many years back, some of the finest shows of fruits and flowers ever held in London were held here, and although the taste for them has somewhat declined, yet the very liberal schedule, in which nearly 150/ were offered for cut blooms of Dahlias, Hollyhocks, Gladiolus, Asters, Verbenas and Roses, will doubtless bring together a fine exhibition. Schedules and all particulars may be obtained from the Hon. Sec., the Rev. H. Honeywood Dombrain, Westwell Vicarage, Ashford, Kent.

VALUE OF FRUITS AND FLOWERS.

Fauna and flowers have too often been considered only as the luxuries of life; but the more we use them, the more we are associated with them, the nearer shall we approach a refined and healthy temperament both of body and of mind. It is therefore our duty to develop these wonderful resources of nature, and to increase and improve them to their utmost extent. No employment is more consonant with the refinement and happiness of a rational being, none better calculated to develop the purest sentiments of our moral nature. "They are," said Mr. Webster, "a constant field where all sexes and ages, and every degree of taste and refinement, may find opportunity for gratification."—[Extract from a Lecture by the Eon Marshall P. Wilder to the Massachusetts Horticultural Society.]

THE NEW ROSES OF 1871.

If R. John Keynes of Salisbury did good service to all lovers of the Rose on July 16th, by bringing up to South Kensington 3 boxes containing 72 blooms of the best £4 roses of 1871; it is manifestly impossible to judge of new roses the first season, and hence the value of such an exhibit as this. We give brief notes of them:—

- Etienne Levet, brilliant carmine rose.
- Souvenir de Paul Néron, beautiful waxy white and salmon tea rose.
- Madame Geo. Schwartz, beautiful soft rose, large and fine form.
- Madame Lefebvre Bernard, shelly petals, rosy pink colour, fine flower.
- Baron Boustetten, deep rich dark crimson.
- Madame Louis Corbie, pretty, soft crimson.
- Bessie Johnson, sport from Abel Grand, pale blush.
- Madame Bellon, pretty pink.
- President Thiera, bright crimson, thin.
- François Michelon, large pink globular flower.

- André Dunand, soft pink.
- Auguste Rigotard, cherry red, fine form.
- Baronne Louise Uxhull, carmine rose, fine colour and form.
- Lyonnaise, light rose, dark centre.
- Madame Scipion Cochet, cherry red, not full enough.
- Richard Wallace, fine bright rose.
- Victor Verne, red, very effective.
- Abbe' Bramere, bright crimson, shaded with velvet brown, fine garden rose.

Out of these we think that five or six may be relied upon as being quite first rate roses.

PLUCK THE FLOWERS.

ALL lovers of flowers must remember that one blossom allowed to mature or go to seed injures the plant more than a dozen buds. Cut your flowers then, all of them, before they begin to fade. Adorn your room with them; put them on your tables; send bouquets to your friends who have no flowers, or exchange favours with those who have. All roses, after they have ceased to bloom, should be cut back, that the strength of the root may go to forming new roots for next year. On bushes not a seed should be allowed to mature.

As a caution to exhibitors, we give particulars of a painful incident which occurred at the Royal Botanic Society's Show on Wednesday last. Prizes being offered in the schedule for 12 tricolor and variegated Pelargoniums, Mr. Turner, Slough, sent up the required number of nicely-grown plants. They were put up in the usual way by Mr. Turner's man, who finally gave them a watering overhead with, as he thought, pure water. It turned out, however, that instead of getting the water at the usual place, he took it from a tub nearer at hand, which appeared all right, but which unfortunately contained sulphuric acid, which had been used the night before by some of the workmen preparing for the gas illuminations. The plants commenced to flag almost immediately, and in the course of an hour every leaf had become perfectly rotten, the whole presenting a very pitiable condition.—*Gardener's Chronicle**

SINCERE TO CORRESPONDENTS,

E. H.—Tea, «e ham unhappily trace* of the Gladiolus diaeae, and have bauld of ita existence from othen—it il a plague.

THE ELOKAL MAGAZINE.

NEW SERIES.]

SEPTEMBER, 1873.

[No. 21.

EXHIBITIONS.

ROYAL HORTICULTURAL SOCIETY, AUG. 6.

THERE was on this occasion a very small display of flowers and plants, so small indeed that it might have been very well arranged in the Council-room. The principal plants were Phloxes; and any one who knows the excellence of culture displayed by Messrs. Downie, Laird, and Laing in this beautiful tribe of plants, will not be surprised to hear that they took the first place. Amongst the varieties exhibited by them were Lothair, salmon red; Madame Dombrain, white, crimson eye; Philippa Penglase, fine lilac rose with carmine centre; Mons. Domage, Madame Domage, M. Malet, Marguerite de Turenne, lilac; John Laing and M. de Lamy. Mr. Ware, of Hale Farm Nurseries, was second. Messrs. E. G. Henderson and Co. exhibited good plants of Cannas, for which prizes were offered. The collection included *Musafolia hybrida*, bright green; *Premice de Nice*, yellow; *Schubertii*, *Eubra superbissima*, with dark bronze veins, and *Rendatlerii*, deep green. Mr. Denning, gardener to Lord Londesborough, exhibited a group of Orchids displaying his usual excellence of culture; it included *Saccolobium Blumei*, with seventeen spikes, a splendid flower; *Epidendrum vitellinum*, with thirty-eight flowers, *Disa grandiflora*, *Oncidium macranthum*, very fine; *Thunia alba*, *Saccolobium Blumei superbum*, &c Mr. Turner had some nice blooms of Carnations and Picotees: amongst them was a fine large yellow self called King of Yellows, which obtained a first-class certificate. He had also a fine stand of Verbenas, Perry's strain, amongst which, conspicuous for its fine colour, was Prince of Wales, vivid scarlet. Although prizes were offered for Petunias none were exhibited, nor did any amateurs exhibit for the prize for Phloxes.

AUG. 20.

This was also a very small Exhibition, but it brought together the finest collection of Gladioli ever yet shown; indeed, we are every year surprised to find how great are the strides which have been made; and when we recollect not only the flowers exhibited, but the manner of setting them up, we cannot but congratulate all lovers of this beautiful but fickle flower on the success which has attended its culture and exhibition. Foremost amongst the exhibitors was of course Mr. Kelway, of Langport; and as, in his stand of twenty-four, twenty

were seedlings of his own, and four out of six that he exhibited for a first-class certificate obtained that honour, it will be seen that he has attained a position which it is hopeless for any one to attempt to rival him in. Lord Hawke was the most successful exhibitor amongst amateurs, Mr. Douglas and the Rev. H. H. Dombrain running him very close; in fact the stands were all most creditable. Amongst the finest flowers we noticed Horace Vernet, splendid amaranth; Legouve, brilliant scarlet; Marie Stuart, delicate soft pink; Madame Desportes, fine white; Eugene Scribe, light rose; Jupiter, red marked with dark crimson; Madame Furtado, very fine rose; Orphe*, rose with dark carmine marking; Primatrice, fine rose, slightly tinted lilac; Octavie, pale rose, slightly flamed with red; Didon, white, slightly tinted lilac. We have not included in these Mr. Kelway's seedlings, but he had Ball of Fire very brilliant, Lord Bridport, a beautiful colour, Scopax Pictum, a very beautifully marked flower. One great feature in these flowers is the number of blooms which come into flower at the same time, imparting an air of great grandeur to the spike. Lord Hawke and Mr. Chater of Saffron Walden also exhibited some splendid spikes and cut blooms of Hollyhocks, but of miscellaneous collections there were not so many as usual.

TAUNTON, AUG. 14.

This is one of those provincial Exhibitions which, while setting forth the love for horticulture which exists so largely amongst us, at the same time shows how exceedingly well things can be managed in the provinces. There were to be seen at this Exhibition as fine specimens of culture as one need wish to see anywhere; while in cut flowers the noble stands of Gladioli exhibited by Messrs. Kelway and Son were such as to excite universal admiration; and the arrangements were so admirable that notwithstanding the great mass of visitors, and that as usual there were disappointments by exhibitors not coming forward who had promised to attend, all went smoothly; and the indefatigable exertions of the secretary, Mr. S. B. Saunders, and the committee were amply rewarded by a most successful exhibition. As is generally the case in provincial Exhibitions, the day was regarded as the day of the year; the whole town was *en fete*, and for miles around the people both gentle and simple flocked in in large numbers. We were also gratified to find that Mr. Marshall of Belmont, whose delightful grounds and garden are situated quite close to

the town, threw them open to the visitors, and that thus they had an opportunity of seeing not only the fine productions gathered together from all parts for the Exhibition, but also one of the best kept gardens we know anywhere, with its unequalled collection of birds in aviaries which are the perfection of all that is elegant and commodious, and the aquatic birds, which are hardly less interesting; and it is to the credit of the people to be able to add, that not a single thing is even injured, although some three thousand persons visited the grounds.

ORANGE FUNGUS ON ROSES.

THIS is one of the greatest pests of which the rosarian has to complain, and we have ourselves had to mourn over its ravages, especially during the last two years. It seems to attack the trees when at their greatest luxuriance; the leaves become at first infested by a black spot, then the orange spots appear underneath, the whole of the foliage then becomes affected and then drops off. We have at this moment bushes as completely stripped of foliage as they would be in the middle of winter, and the result must be the loss of the bushes; for, as their source of nourishment is stopped, the plant must suffer, and does, for we lost last year a large number through this disease. Whether it is caused by the large amount of manure used, or, as we suspect, by the atmospheric changes which have been so great the last two years, we cannot say, but it seems when once it gets into a rosary to be epidemic. We have tried various means to stay it, but they have been quite ineffectual; but we lately heard of a remedy which a friend has informed us he has found very efficient—viz., Condy's Fluid; a wineglass of this is to be put into four gallons of water and the plants syringed with the mixture daily. The friend who recommended it to us, assures us that he completely saved a plant of Marshal Niel under glass, which had been badly affected, by its use. It is too late to try it this year, but we shall certainly hope to give it a fair trial next season.

ROYAL HORTICULTURAL SOCIETY.

WE hear that considerable alterations are to be made in the operations of the Society for the ensuing year; the schedule is to be entirely remodelled, and instead of the money being frittered away in a number of small shows, it will be given on fewer occasions and better prizes will be offered. The fortnightly meetings will be continued, but they will be strictly meetings of the Floral and Fruit Committees, at which any novelties may be brought forward. We think this a decided improvement, for the public not unnaturally feels that to pay half-a-crown for

the small shows, which are so frequently held, is a waste of money, and exhibitors will be glad of the respite afforded to them. An alteration in the mode of appointing the judges will also be made, and the wishes and wants of exhibitors will be more consulted than they have been hitherto. The dates of the Shows have been fixed as follows:—Third Wednesday in March, third Wednesday in April, second Wednesday in May, first Wednesday in June, first and third Wednesdays in July, first Wednesday in September, and second Wednesday in November; a Committee of Exhibitors has been appointed to confer with a Committee of the Council, and to assist in the preparation of the General Schedule for 1874. This is as it should be, and we are hopeful that the Society has a good prospect of success before it.

DELPHINIUMS.

AKONG hardy perennials there are few more gorgeously beautiful than the perennial Delphiniums. We lately saw some beds of these in Mr. PuiLer's nursery at Tooting, and also at Messrs. Henderson's, St. John's Wood, and their beauty was really dazzling. They are for the most part hybrids from *Delphinium datum grandiflorum*, and *D. formosum*, and have been chiefly raised in France. Among the finest that we noted were *D. Barlowi versicolor*, with pale blue flowers shaded with a darker tint and studded with yellow hairs; *D. fonnosum*, with large azure flowers shaded with indigo; *M. le Bihan*, with globose double flowers, blue externally, shading off into pinkish violet; *Madame Jacotot*, with large soft blue or amethyst coloured double flowers; *Coronet*, with dwarf habit and deep blue flowers; *Priuce of Wales*, recommended for its robust constitution; *Agamemnon*, with large pale blue flowers; *Amiable*, *Gloire da Saint Mande*, *La Mastodonte*, *R. juinciliHorum*, a double-flowered variety, with pale violet flowers shading off into pink. *M. Thiers* is also a good double. Many of these cannot be reproduced from seed, or even if seed be obtained it cannot be depended on to yield the desired variety, hence the necessity of propagating them by parting the roots. They are not particular as to soil and treatment, though some are more fastidious in these matters than others. Their flowering period may be prolonged by cutting off the flower-spikes as they fade.—*Gardener's Chronicle*.

CATALOGUES RECEIVED.

Carter and Co., Holborn; Sutton and Sons, of Reading; B. Williams, Holloway; Messrs. Veitch and Sons, Chelsea.—We hope to say something on these next month.

THE FLORAL MAGAZINE.

NEW SERIES.]

OCTOBER, 1878.

[No. 22.

EXHIBITIONS.

AT this period of the year we are obliged to look to the provinces and not to the metropolis for large exhibitions. The Royal Horticultural Society has only held one or two of very insignificant character; the Botanic Society has ceased for the season; the Crystal Palace Company has only held an Autumn Exhibition of Fruit, with a few Gladioli; but at Manchester, at Brighton, and in other large provincial cities, grand shows have been held. At the former place the finest Autumn Exhibition that was ever held took place on the 3rd of September and following days; it was under the auspices of the Manchester Botanical Society, and was opened at their Gardens at Old Trafford, under the presidency of the Earl of Derby; 14001. was offered in prizes, and such a collection of fruit and vegetables has perhaps never been brought together before. This portion of the show is outside our province, but we cannot forbear alluding to the bunch of black Hamburg Grapes weighing 13½ lbs., or to the Queen Pine-apple weighing 8½ lbs. The flowers consisted of Dahlias, Hollyhocks, and Gladiolus; the first were exhibited well, and the stands contained most of the leading varieties, such as John Standish, Toison d'OY, Mrs. Saunders, Yellow Boy, &c, while Mr. Charles Turner exhibited a very fine seedling, which deservedly received a first-class certificate: it is called Ovid, and we hope to figure it ere long in the Magazine. The Gladioli were magnificent, Mr. Kelway exhibiting a large bank of several hundred blooms of his seedlings, and some grand spikes on his stands. He had some which seemed to surpass anything we had as yet seen, such as Orange Boven, which had sixteen expanded blooms on it at the same time, but they were surpassed by some he had at the Crystal Palace, such as Lord Hawke, Rev. H. H. Dombrain (the finest Gladiolus ever raised), Harrison Weir, Mrs. Reynolds Hole, &c.; he is leaving the French varieties in the rear, and if only they retain a good habit, this will supersede them. Lord Hawke, who has for many years occupied the first position as an amateur in exhibiting Hollyhocks, has taken, at a bound, the same place as an exhibitor of Gladioli, and both in these and in Hollyhocks he made a grand display, his twelve spikes of the latter flower, all but two his own seedlings, were marvels of fine cultivation and excellence.

At the CRYSTAL PALACE, on the 6th, there was opened a large exhibition of Fruit, and a small one of Gladioli;

here, as usual, Mr. Kelway was in great strength, and his stand of six seedlings, not yet sent out, was exceedingly fine: the flowers were Rev. H. H. Dombrain, light red with white centre; Rev. Reynolds Hole, pale lilac, something in the style of Lacedèpe; Lord Derby, fine white; Lord Hawke; Harrison Weir, salmon rose; and Mrs. Reynolds Hole, white. Mr. Douglas, gardener to J. Whitbourne, Esq., Loxford Hall, exhibited some fine flowers, several of them being his own seedlings; and the Rev. H. H. Dombrain and Mr. Harrison Weir were also exhibitors.

The great SOUTHERN EXHIBITION took place at Brighton on the 10th, and there was here again a fine display of fruit and autumn flowers. Gladioli were not so fully represented as at Manchester and the Crystal Palace, the prizes being small, and not sufficient to induce exhibitors to come forward. Owing to the non-fulfilment of an engagement made by the proprietor of the Surrey Gardens, the Metropolitan Floral Society were unable to hold their Annual Autumn Exhibition, so that we may say the metropolis is the only place of any note where such a show has not been held; we trust that this will not take place again, for it is a great loss to all lovers of flowers.

THE AURICULA.

THE growing interest in florists' flowers is bringing once more into more prominent notice this beautiful spring flower, and we are glad to see that the North, as has always been its wont, is coming out strongly in its favour. A revival of the National Auricula Show took place this year, mainly owing to the vigorous efforts of the Rev. T. D. Horner, the son of one of the best known and most successful florists of the olden time, and a good beginning has been made for a repetition of the show in the ensuing season. In the South we hear of several gentlemen commencing its cultivation, and we doubt not, that if people could get rid of the idea that it requires so much extra care and attention, they would be more ready to attempt its cultivation; the quackery (for it was nothing else) that was connected with it in former days, gave people an exaggerated notion of its difficulty of culture, and prevented them from attempting it; it is now being found out that, like a great many other plants, simple treatment succeeds with it best. The past season was not a particularly good one for it, the flowers were late in coming into bloom, and consequently at the

early shows they were not shown very extensively; we hope, however, that next year we shall see a much larger number of exhibitors, and therefore more plants.

DOUBLE BEGONIAS.

Two Begonias were shown at a recent meeting of the Floral Committee of the Royal Horticultural Society by Messrs. E. G. Henderson and Co., which were very interesting. In both instances the male flowers were reduplicated by petals taking the place of stamens, while the female flowers were unaffected.

ROYAL HORTICULTURAL SOCIETY.

As we announced in our last issue, the number of shows has been reduced, although the fortnightly meetings will be continued as before. The dates fixed for the Exhibitions are as follows:—

- March 18th, for Hyacinths and other spring flowers.
- April 15th, for Auriculas, &c.
- May 13th, for Roses in pots.
- June 3rd, Great Summer Show.
- July 1st, National Rose Show.
- July 15th, for Zonal Pelargoniums.
- Sept. 2nd, for Dahlias, Gladiolus, &c.
- Nov. 11th, for Fruit and Chrysanthemums.

CLASSIFICATION OF ROSES.

THE Lyons Congress of Rosarians, comprising such men as GuUot fils, Liabaud, Jacqnier, Jos. Schwartz, Leon de St. Jean, Jean Sisley, and M. Lachanne, have adopted the classification of garden Roses proposed by Mr. Shirley Hibberd, and recorded a formal vote of thanks to that gentleman for the service rendered by his distinctions and definitions. Mr. Hibberd recognises (in the paper of his published in the August number of *Le Cultivateur de la Région Lyonnaise*) six distinct forms of Roses as admissible to the exhibition stand, and arranges them in the order of their relative merits as follows:—globular, cup-shaped, tazza-shaped, imbricated, reflexed and quartered. In the final decision as to the merits of a particular variety in accordance with this classification, there is of course plenty of room for refining, but a definite code of "properties" is of immense service to begin with. An additional honour has been conferred on the author of the code by M. Levet, who has named a new and beautiful Tea Rose, Shirley Hibberd.—*Gardener's Chronicle*.

BULB CATALOGUES.

THESE are issuing forth in the usual autumnal stream, and are characterized by great care and attention to details. We have received those of—

Button and SODS, Reading:—capitally illustrated, and with simple and clear directions for cultivators.

Downie, Laird, and Laing, Stanstead Park, Forest Hill:—an excellently arranged catalogue.

Charles Turner, Royal Nursery, Slough—marked with the usual care of this well known florist.

William Cutbush and Sons. All who know the success which has attended Mr. C's culture of the Hyacinth will expect to find a good catalogue, nor will they be disappointed.

Barr and Sugden:—a very extensive catalogue, containing besides an ample list of Spring Flowers and Plants suitable for window gardening; the scientific arrangement of the catalogue is worthy of all praise.

Carter and Co., High Holborn.—very full and complete, and exceedingly well illustrated.

Dick Radclyffe and Co., High Holborn:—very neat and excellent in all its parts, especially in that pertaining to decorative purposes.

Messrs. Veitch and Sons, Chelsea. The high position of this firm is a guarantee for the excellence of the catalogue.

Mr. William Bull, King's Road, Chelsea:—very copious, and containing many novelties.

Messrs. Rollison and Son, Tooting:—a well arranged catalogue.

Messrs. Anthony Roozen and Son, of Overveen, near Haarlem, Holland:—an extensive and well arranged catalogue of Dutch and Cape Bulbs.

Messrs Hooper, of Covent Garden.—a catalogue of Autumn Bulbs, with illustrations.

Mr B. S. Williams, Upper Holloway:—a catalogue of new and rare Plants.

Messrs. E. G. Henderson and Son, Wellington Road, St. John's Wood:—a catalogue of Stove and Conservatory Plants.

Mr. Yick, of Rochester, New York, sends us his *Quarterly Floral Guide*, well printed, tastefully illustrated, and containing, besides information relative to his own business, observations on places visited in Europe.

THE sixth volume of Mr. Bentham's FLOBA AUSTRALISNSIS, comprising the Orders Thymales to Dioscorides, is just published. One more volume, we understand, will complete the work.

THE FLORAL MAGAZINE.

NEW SERIES.]

NOVEMBER, 1873.

[No. 28.

EXHIBITION.

ROYAL HORTICULTURAL SOCIETY.

OCTOBER 1ST.

THIS was essentially the Fungus Day, when all kinds of edible and unedible species were submitted for the inspection of the curious and the delight of the favoured few, who are no doubt acquainted with a very interesting, but as far as the grower of Sowers is concerned, a very pestilential family, to avoid the attacks of some of the species being his chief aim j we therefore pass them by to notice a few other objects more congenial, although there was not really much of a valuable character. Some of those for which, prizes were offered found no competitors sufficiently interested in them to exhibit, and the novelties were few; we noticed, however the following : *Cattleya speciosa Bassetii*, exhibited by Mr. T. Baines, gardener to H. Nicholls Esq., Southgate House, with a deep purple lip, yellowish cream at the base, the sepals and petals flushed with purplish pink. This was awarded a first-class certificate, as was also (although hardly distinct enough) Golden fleece Thyme, similar to *Thymus cotriadora aurea*, but a little larger in leaf. Mr. Williams had one also for *Pouretia achupulla*, with gracefully arching leaves upwards of a yard long, bright green, tipped with crimson. A curious sport of Lady Middleton Geranium, with rose and scarlet coloured flowers, came from Chiswick, and Mr. Bull had a fine Castor-oil plant, *Rieinus refulgens*, with dark refulgent leaves.

Dahlias were exhibited by Mr. G. S. Harris, of Orpington, amongst them Mrs. Harris, which had already received a first-class certificate; and Mr. Rawlings of Romford sent also a box of exceedingly good flowers of Dahlias already in commerce.

Roses were exhibited in considerable numbers by Messrs. Paul and Son, Cheshunt, and Mr. William Paul, Waltham Cross; the blooms were many of them remarkably good for the season, and included those fine well-known varieties, Alfred Colomb, Duke of Edinburgh, Charles Lufebvre, Dr. Andry, Souvenir d'Elise Vardon, Edouard Morren, Senator Vaisse, Gloire de Dijon, Dupuy Jamin. Besides these, Messrs. Paul and Son had blooms of Cheshunt Hybrid, which we have often noticed in terms of praise. Cyclamens were exhibited in excellent condition by Mr. R. Clarke, Twickenham, thus showing that for nine months in the year this beautiful plant can be had in bloom.

GARDEN LABELS.

WHAT a perplexing thing is labelling out-of-door plants? how provoking to think that you managed to Libel all your roses, for example, so nicely, and then to find that either the wire has rotted, or the damp has obliterated the writing, and so "Love's labour's lost" becomes the fittest title for your work. We therefore hail with satisfaction the new Shakspeare label, invented and brought out by Messrs. Bell and Thorpe, of Stratford-on-Avon; they are of a hard metal galvanized, and the letters are cast in such bold relief that they would seem to deserve their title of *imperishable*; they are of various sizes, either round or oval, some are adapted for hanging on trees and bushes, and others for placing in the ground; they are very cheap and likely to be very generally used.

PENTSTEMON PALMERI.

IN the *Pentstemon Palmeri* of Dr. Gray, a species allied to *P. Cobaea* and *P. Jamesii*, a very distinct and novel form of this interesting genus is added to our list of garden plants. It grows four feet high or more (hence Dr. Gray's description, *sesquipedalis*, must have been made from imperfect materials), the stem being terminated by a noble panicle inflorescence. The young shoots from the base have opposite, long-stalked, fleshy, glaucous leaves oblong-ovate in form, with coarse, distinct, and remarkably prominent marginal teeth; while the leaves on the flowering stems are short and broadly ovate, completely connate, with the edge turned up so as to form a basin around the stalk. The flowers are rather more than an inch long, the tube remarkably inflated above, and contracted just at the base, where they are set into the short inconspicuous calyx. The colour is a pale rosy lilac with a purple stripe answering to each of the lobes of the lower lip, which is remarkably elongated and deflexed, while the upper lip is projected forwards, and merely revolute at the edge. The bearded sterile filament is very conspicuous at the mouth of the tube. The plant is very ornamental in character, as well as perfectly distinct, and will be welcomed in every garden where hardy perennials are cared for—the number of which, we are heartily glad to see, is day by day increasing. We have to thank Mr. W. Thompson, of Ipswich, for specimens of this novelty.—*Gardener's Chronicle*.

NEW ROSES.

"WHEN the " Cercle Horticole" was established at Lyons, one thing was anxiously expected by lovers of the Rose—viz., that it would be the means of checking the vast multitude of new Roses annually brought into commerce, and our hopes were increased by the knowledge of the fact that a jury (amongst whom our friend, Mr George Paul, was one) was formed for the purpose of deciding on the merits of the new varieties; but from what we learned during a recent visit to Fans, our hopes are doomed to disappointment, for the number of new Roses this year is as great, if not greater, than ever; and of the three that did obtain certificates, two are kept back to be propagated another season before being sent out. This is rather too bad; the only way in which it could be put a stop to, would be for buyers in this country to combine, and determine not to purchase any but those which have been recognised by some competent tribunal; for what can be more trying than for a nurseryman to receive a number of Roses, to propagate them at considerable expense, and then to find that they are utterly worthless; and yet this must inevitably be the case while the present system holds good. Considerable dissatisfaction was expressed, and no wonder. Thus, one Paris grower, who one year sent out sixteen, not one of which, we believe, is now retained in our Catalogues, advertises no less than ten new seedlings; what percentage of these will prove valuable we have no means of judging, but we should, from past experience, very much fear that it will be very small. Amongst the Lyons raisers of seedlings Mons. Levet, the raiser of Etienne Levet, Claude Levet, &c., and Mr. George Schwartz, the raiser of Madame George Schwartz, deservedly hold a high place.

AUTUMN-BLOOMING AURICULAS.

As we figure a new Auricula in this Number, the following from the pen of the Rev. F. D. Homer, which has lately appeared in the *Journal of Horticulture*, will be found of interest.

" The question whether the autumn-blooming of the Auricula is preventible would probably be answered by all growers in one way. Roughly I could reply in four words, It cannot be helped. Yet I conclude from practice with my own plants, and from observation of other collections, that the extent of autumn blooming may be affected and reduced by adhering with all patience to proper treatment in the summer, so that autumn trusses shall arise alone from causes over which we can never have control. First among such I would account the fact that a tendency to autumn blooming ' runs in the family.' Instances of this are afforded us by those Auricula* and Polyanthus of low extraction in the

garden borders, and by the untutored pretty Primrose of the woods and hedgerows. The florist may, therefore, expect an interference with his plans by this characteristic, just as another family feature, the dimorphous arrangement of the stamens, now above and now below the pistil, leaves it freely open to his Beedlings to choose the alternative of a ' pin-eye'—one of the grossest insults they can offer him.

" Again, there is a propensity, amounting almost to a property in some varieties of Auricula, to bloom in autumn, and I rarely escape being thus favoured by Lady Wilbraham, True Briton, Beeston's Apollo, General Niell, and a few selfs and others.

" I have next to say that I have reasons to think that an unclean and unhealthy state of the plant during summer is calculated to excite this property of the Auricula. I have noticed that plants suffered to fall out of condition by being heated and baked in the sun, or kept too dry, or allowed to be ravaged by peste, have in a marked] manner struggled into bloom in autumn; for one thing which a plant in danger of its life will do is to try and preserve its species by hurriedly forming seed, to which flowering is of course the prelude. I am quite sura that what has no right whatever to be blamed for autumn blooming is spring potting. I repot all my Auriculas as they pass out of bloom, except such as are to stand for seed, and every autumn I have only a very healthy quiet set of plants—beautiful rosettes of mealy leaves and green—busy with forming stout hearts down among crisp short foliage, and getting such doubly-established roothold now as I like to see.

" I will not here say more for spring potting than that I know what has been said against it, and by practice what I could say for it. I have at times been obliged to pot late, yet would always choose early. But I would wish it known that indeed early potting seems no exciting cause of autumn blooming, but a check may be. Have your Auriculas established early, set them in a north aspect the summer through, keep them cool and airy, take care to have them clean from every insect, love to see them in full unbroken health, and then, though a few precocious sorts and some young plants will bloom in autumn, and seedlings, if you have them, will drop in upon you at all possible times to amuse, perplex, disappoint, reward, yet shall you have as little as may be of untimely blooming from your established plants. But here let me confess that I never in my heart affect to call a flower out of season whenever it may bloom. I am in truth not sorry to see a few Auriculas just now, though colours and properties have largely to be excused, and though the beauties are as little like their loveliness in spring as that ghost of a thing a moonlight rainbow is to the bright living reality created by the sun."

THE FLORAL MAGAZINE.

NEW SERIES.]

DECEMBER, 1873.

[No. 24.

EXHIBITION.

ROYAL HORTICULTURAL SOCIETY.

NOVEMBER 12TH, 13TH.

THE Council of the Society have listened to the suggestions of common sense, and instead of holding their meeting on the first Wednesday in November, postponed it until the second. They would perhaps have done better had they postponed it until the third Wednesday. The season is a backward one. The Stoke Newington Show was held on the same day—and indeed the 20th of the month is generally about the time when Chrysanthemums are at their best. However, the alteration of date and the liberal prizes offered by the Duke of Buccleuch, the late President of the Society, brought together the best exhibition of Chrysanthemums ever seen at South Kensington. The collection of Mr. Row, gardener to Viscountess Clifden, Dover House, Rotherhampton, contained some magnificent plants; while in Pompons, those staged by Messrs. Cutbush and Son were admirably bloomed plants—such varieties as Mrs. George Rundle, Guernsey Nugget, Prince of Wales, Alma, Beethoven, Jardin des Plantes, amongst the large-flowered varieties; and Bob, golden, bronze, blue, and yellow Cedo NuUi being conspicuous. We very much question, however, whether the beauty of the plant in the large-flowered varieties is not sacrificed to the desire to have large blooms, and a shoot with one huge bloom at the extremity, is not so pleasing an object as one with several smaller blooms. The display of cut flowers was not very large; those of Messrs. Veitch, however, were very fine, and contained grand flowers of Guernsey Nugget, Empress of India, Prince of Wales, Jardin des Plantes, John Salter, Lord Derby, Golden Beverley; they also had a stand of the curious, and, in our opinion, very attractive Japanese varieties, including Erecta Superba, Elaine, Red Dragon, Chang, and the Sultan; Elaine is a remarkably fine variety with broad and well arranged florets. There was also exhibited by Mr. E. C. Walters, a very beautiful sport from Mrs. Rundle, of a pale straw colour, and as it retained the beautiful form of that variety, it will be doubtless a real acquisition; it obtained a first-class certificate, as did also a fine double white Chinese Primrose exhibited by Mr. Tomkins of Birmingham, and called by him Magnifica; a first-class certificate was also awarded to a very curious Orchid, Batemannia Burtii. Besides the flowers, the Show contained a remarkable collection

of Fruit and Potatoes. Mr. Scott, of Merriot, Crewkerne, exhibited no less than 600 varieties of apples, and Mr. Betteridge, of Chipping Norton, 1-25 varieties of potatoes. But there is no need of our referring to these except to protest against the uselessness of retaining so large a number of varieties of either fruit or vegetables.

CRYSTAL PALACE.

WE are enabled to state that the days fixed for the very popular Flower Shows held at the Palace, for 1874, are May 16th for the great Flower Show, and June 20th for the grand Rose Show; while we believe it is contemplated to hold on August 29th, 31st, and September 1st, or else on September 6th, 8th, and 9th, a grand Autumn Show of Fruit and Flowers in connexion with the Metropolitan Floral Society; the date for the latter is not absolutely fixed, but the others are. All who have ever visited the Palace on these days know how grand is the display, and that no place affords so much comfort and convenience as does this popular place of amusement, while the exertions of the able and courteous Secretary, Mr. Wilkinson, are ably seconded by Mr. Wilson, the Manager of the Natural History Department of the Palace.

THE CULTIVATION OF TEA-ROSES.

CONSIDERABLE difference of opinion appears to exist as to the proper treatment of this beautiful class of Roses; it has been generally considered that they require a warm south border, but a writer in the *Journal of Horticulture*, the Rev. E. Handley, says that he thinks this to be a mistake, and that they do not like the dry withering exposure of such a situation. Doubtless the difference of climate has a good deal to say to it; in the more northern parts of our Island we imagine that such a situation is absolutely necessary for them, but in the south it is perhaps more questionable; in the north too it becomes needful to take them up and cover them, while in the south they merely require to be covered with fern leaves. And yet, after all, we are not perhaps wrong in saying that however well they may do out of doors, they do better under some protection. Mr. George Paul, in his Catalogue, gives the plan of a protection of this kind which, while inexpensive, answers all the purpose of an effective protection to the Roses; and the exceeding delicacy of their tints can hardly, we think, be attained

without some contrivance of this sort. We add the names of a few of the best:—

Adam.	Bouton d'Or.
Devoniensis.	Catharine Mermet.
Madame Margottin.	Souvenir d'un Ami.
Narcisse.	Mad. Adricne Christophle.
Souvenir d'Elise Vardon.	Comtesse Ouaroff.
Belle Lyonnaise.	Madame Jules Margottin.
Madame Willermora.	AlbaBosea.

NEW GLADIOLI.

WE perceive that the successors of M. Souchet (who has definitely retired from the culture of this lovely flower) have announced a goodly number of novelties, and as they are in truth those which our valued friend has himself nurtured, we have no doubt that some of them at least will maintain the high character of his seedlings. They are eighteen in number, and include some of a novel character. The more expensive, and therefore, as we may reasonably conclude, the best, are—Pysche, light satin rose, inferior divisions darker rose named bright carmine; Le Vesuve, fiery red, L'Umque. Violet, large dark lilac, tinted violet and flamed dark carmine; Merveille, cherry red, slightly tinted violet; and MuriUo, cherry rose, all the divisions with pure white line, very large white spots on lower divisions.

A DOUBLE POINSETTIA.

ON my arrival in this country from the Royal Botanic Gardens in Edinburgh, in 1828, I paid a visit to the famed "Bartram Botanic Garden/" and there saw two cases of plants which had just arrived from Mexico. Among the contents were the stumps of a strange-looking Euphorbia, which, after a few months' growth, showed some very brilliant crimson bracts. As soon as I located, I made a small investment in the plant, and grew the bracts to the enormous size of from 18 to 22 inches. I sent, in 1830 or 1831, some plants to my valued friend, the late Mr. M'Nab. At a breakfast party in Glasgow the amiable lady of the late Sir Wm. Hooker gently chided me for imposing my Jonathanisms upon them so soon, by describing a plant having a crown of terminal leaves as 20 inches in diameter, of brilliant crimson. The tens of thousands sold in Covent Garden and this country every winter confirms all that I have represented.

I now call your attention to a double Poinsettia, for, from the dried specimen before me, I can give it no other name. It is a towering bunch of crescent-formed bracts, at least 10 inches high and as many wide, which will, no doubt, when in the hands of expert cultivators, be grown to 18 inches high and as much in diameter. Such

crowns upon well-grown plants, will surpass everything now known for table ornament, conservatory decoration, or the manipulations of the bouquetist. On a recent tour through the grounds of Mr. Isaac Buchanan, the millionaire florist of New York, he drew me towards two plants of familiar outline, but, on inspection, I discovered a plant entirely new to me. "Is this the double Poinsettia?" I asked. "It is; and I paid 1000 dols. in cash for it," was the reply. The saddle-like foliage has a more graceful outline than the present Poinsettia, the nerves of deeper purple, the petiole (footstalk) has two erect stipules of about a quarter of an inch high, surmounted by two glands. I have no doubt, in the hands of a botanical professor, it will be made a new species, and electrify the floral world.—R. BUIST, *Philadelphia, U.S., October.* (*Gardners' Chronicle.*)

CATALOGUES RECEIVED.

WILLIAM CHATER'S Collection of Superb Hollyhocks and Roses.—In this Catalogue the veteran Hollyhock grower announces nine new varieties—six of his own, and three of Lord Hawke's; of these nine, four have obtained first-class certificates—a tolerably sure guarantee of their excellence.

NEW WORK ON ORCHIDS.

A NEW work on "Orchids and How to Grow Them," by Mr. Jennings, F.R.H.S., Vice-president of the Agricultural Society of India, is in preparation, and will shortly be commenced in monthly parts. The publishers are Messrs. L. Reeve & Co.

NEW WORK ON ENTOMOLOGY.

THE same publishers are about to issue, in monthly parts, a new work on Entomology, by Mr. Owen Wilson, called "Food Plants of the Larva of the British Lepidoptera." The work will contain descriptions of the Caterpillars, pups, and perfect insects, with coloured illustrations, and a calendar of the times at which each may be found. The work promises to be a useful one to the public generally, and to gardeners in particular.

FLORAL MAGAZINE.

THE present number completes the second volume of the New Series, for binding which handsome cases may be had through any bookseller, or direct from the Publishers on remitting 2s. 6d. in stamps. It cannot be sent by post, as it exceeds the width allowed.

BOTANICAL MAGAZINE.

A NEW Issue of the Third Series of the Botanical Magazine in monthly volumes will be commenced next month.