



PARISH MAGAZINE ONLINE



Issue 6 — July/August 2020

www.bishopstachbrook.com

Your online magazine featuring news and views from within Bishop's Tachbrook Parish. A gentle mix of the chatty and Church

What's in this month's magazine

Start here Precise of what you'll find in the magazine are shown on this page. Click on the title (underlined) to go to the article.



Positively locked down Revd. Elaine reflects on a gradual exit from lock down and what we may have learnt..

Children's section Jokes, puzzles, colouring in, Sudoku some small ways of keeping children amused during lock down.

Parish Council News

An update on what has been going on in the Parish and moves for the future.



The M40 Pictures and facts about the M40 past and present



Nature Page Werewolves, dog foxes and Spotted Flycatchers—life in nature



Neighbourhood Development Plan The plan sets out a vision of the future and policies to be used to determine local planning applications - **HAVE YOUR SAY!**



The business interview A welcome return for the interview with a local business person

Poetry Please The Poet Laurette and Pam Ayres share the stage. Pam is not very impressed with her husband.



Domesday women in 1086 Peter Lister writes about five famous women



Photoshop Great photos of flowers and muddy dogs!

Flower festival a virtual blooming

Primary news Reports from Heathcote and BT schools

Scarecrow competition
Coming soon!

Rainbows and Brownies busy despite not meeting

Heathcote Park Homes news from the Park Homes

WI even under lock down there's no holding the WI back!

Adverts Many of our loyal advertisers will be going through a hard time at present, please use them in preference to those who don't advertise with us. Click on the links below to see who can provide you with a service: [List of all advertisers](#); [Food & Drink](#); [Financial Services](#); [Funeral Services](#); [Garden Services](#); [Health & Beauty](#); [Home Improvements](#); [Trades](#); [Miscellaneous](#)

Positively Locked Down

By Revd. Elaine Scrivens

I was recently looking to see what new films were available to watch and noticed that there was a new Dr Dolittle film out. It stars Robert Downey Jr., Antonio Banderas, Michael Sheen, Jim Broadbent, a great cast but the film has been "panned" by many critics. To be honest I don't always listen to critics but as yet I've not been tempted to watch this movie as a child I loved the books by Hugh Lofting and I also loved the original film.

You might be wondering why I'm telling you this, well, one of my favourite characters in the books was the "pushmi-pullyu") which was a "gazelle/unicorn cross" with two heads (one of each) at opposite ends of its body. In the Rex Harrison film, the pushmi-pullyu was instead portrayed as a double-headed llama, it symbolised things which are conflicting or contradictory.

For the past 14 weeks, our entire nation has been in a state of getting and giving conflicting advice, contradictory notifications, and counsel which has left most of us feeling that we are being pulled in two different directions. How do we stay safe and yet have access to fresh food, supplies and medicine? How do we keep in contact with others when we have to stay indoors and possibly have not yet mastered new technology? How do we still prioritise the things which up until mid-March seemed so important and

yet now are not available to us? How do we keep our mental health buoyant when others around us seem to be crumbling?

The Church here in the UK has come under a lot of scrutiny recently and many opinions have been aired as to what part churches have played in keeping us safe as a nation but also spiritually nourished. Many of us have been on a huge learning curve to ensure that worship continued during Lockdown, in a new way that has never been seen before. This was a brief time in history when new skills had to be mastered and delivered at lightning speed and everyone was expected to work outside of their normal comfort zones. I've had to learn how to best record myself, help others to record themselves so that it wasn't just me folks were looking at. We've recently started holding a Zoom coffee morning on Wednesdays and that has meant learning how to host a Zoom meeting, teaching people how to access Zoom and turn their microphones and videos on. It has meant I've not had chance to get bored!

So where are we now? We are not out of the woods yet but thankfully there are positive signs that the virus no longer has the hold on the county that it did. As we begin to come out and we're able to do some of the things we took for granted before, and as we begin to socialise more, I think each

one of us will discover that the Covid-19 Virus has changed us in some way. Some have tragically lost loved ones through this time, some have lost jobs and incomes, some have been furloughed whilst others have been working harder than ever. Some have lost precious planned events; family parties and celebrations, baptisms and weddings have had to be re-scheduled. End of year proms, exams, holidays and a whole host of other things precious to us have been lost too... and that will have taken its toll on us all.

But in the midst of the Lock Down some have found some positives too. Many of us have gained a new appreciation for the countryside around us; we've noticed nature and wildlife in a way that we'd not noticed before. There's been a wonderful sense of community, neighbours looking out for each other and generosity of food for the food banks. And for some, life has slowed down a little allowing time to reset patterns of being.

As we begin to come out of Lock Down I feel the need to pause and take stock... to mourn the people, events and time I've lost... and also to be thankful and grateful for those things that have been positive... but also to take time to reflect, "Where has God been in it all?" Of course, I believe He has been there... (and I would say that, wouldn't I, I'm the Vicar!) But sometimes I/we just need to look a little harder to see God ...and sometimes we just need to slow down

in order to be able to see and recognise His hand at work. But when I pause and take the time, I begin to recognise God's presence in all kinds of situations and that God has been with me and alongside me just as promised. Even when we've not felt God's presence, even when it seems like He's not been there I believe He will have been...because He promised He would be. In Deuteronomy 31:6 it says, "...the LORD your God goes with you; he will never leave you nor forsake you." And I believe that's true.

So, as we begin to look forward... as we begin to dare to plan and consider what the future will look like let us try and find ways of taking the positive things we've learned and experienced through Lock Down forward with us. Let us continue to care for one another, to look out for the vulnerable and as God is gracious to us may we be gracious to one another.

Please take care and stay safe

With love and prayers, Elaine

CYCLE OF PRAYER

Praying for our Community

We are praying in June for those living in
Kingsley Road
Lancaster Way
Laertes Grove
Launce Grove
Lisle Gardens
Mallory Road
Millway Drive
Miranda Drive

If there is something or someone you would like us to pray for please let Elaine, our Vicar, or a member of the congregation know.



Your Churchyard

Today, three men from the village, Ray Allan, Mervyn Fletcher and Alan Gandy came to the aid of a vicar in distress. I received a phone call to say that one of the old Yew trees in the churchyard seemed to have fallen. I must admit, at first, I was worried about vandalism because we have been finding so many beer cans, pop bottles, sweet packets and dog faeces in the churchyard. We even had a complaint from the council that people are putting rubbish in the Green bins and so instead of tidying the churchyard, time has been wasted on going through the bin to remove beer cans, bottles and the like so, you can understand, when I got the call I was worried.

However, I need not have been, the tree had just "split in half" with half laying draped over some gravestones and part of the memorial garden. Luckily it had not caused any damage but it couldn't be left as it was as it was a health and safety hazard. This is when my three superheroes

came to the rescue! On one of the hottest days of the year, they cut up the part of the tree that had fallen, loaded it onto a trailer and took it away. I cannot thank them enough. If we had had to call in a group of "professionals" it would have cost us money that St Chad's doesn't have.

Please help us look after your churchyard. If you would like to volunteer to preserve not only the tranquillity of the churchyard but also help maintain its beauty and biodiversity than please let me know. The grass is cut by volunteers, thanks George and Phil, the paths and the graves are kept clear by volunteers, thanks Mervyn and Desnee and the village clean up group also lend a hand every 3 months. Your help would be appreciated.

If you do see or hear people drinking in the churchyard, again, please let me know. People's loved ones have been laid to rest in this place for hundreds of years. Help us to maintain it as a tribute to them, many thanks, Elaine



Do you have a beautiful garden?

Do you arrange flowers?

Do you quilt using floral patterns?

Do you knit or crochet flowers?

Do you enjoy taking photographs of flowers?

If the answer is yes to any of the above, then Rev'd Elaine wants to hear from you.

St Chad's is going to hold a Virtual Flower Festival displaying the creative talents of all the parish. You **DO NOT** have to attend St Chad's Church. Everyone is welcome to join in. Send any photographs you have to Rev'd Elaine via What's App (search Elaine Scrivens); Messenger; or email at: elaine.scrivens@gmail.com

When will St Chad's open?

The Government have now advised us that churches can open for worship, so what is happening at St Chad's? Well, if we open it will not be as normal. At present with social distancing we could only get approximately 20 – 25 into church. We have no hot water in church so hand washing is a problem, we would need to use hand sanitiser. There would be no Holy Communion because of social distancing, and we would not be able to sing.

St Chad's has an additional problem, work on the roof is going to start soon. The company who are carrying out the work wanted to start at the beginning of Lockdown but the PCC and the Diocesan advisors felt that that would not be a good idea and so we have to wait. The work will take 6 weeks and therefore it is unlikely that St Chad's will be open before September. If anyone feels they would like to pray in church, do let me know and if possible, I will accommodate you.

St Chad's continues to worship in the following way and if you'd like to join our Zoom coffee morning, drop me an email. A text or message me on Facebook and I will send you the link.

Thank you for your patience, Elaine and St Chad's PCC



Parish Council News

By Matt Greene

The last few weeks have brought stark divisions within our society to the forefront of the news agenda. Perhaps as a result of enforced periods of isolation, strong opinions and anger has been expressed on both sides of the Black Lives Matter debate. I would love to state how our community has risen above the fray of “heat over light”; however, one only needs to glance at the Parish’s Facebook newsfeed to see how many people within our Parish have strong, angry and sometimes violent opinions on this matter.

I don’t shy away from the fact that I personally believe many of the matters raised need to be addressed; however, I hope I speak for the majority when I say these matters would be best addressed (globally) in a kinder, more balanced way where everyone’s views are heard and considered before judgement is made.

We are taught at school how diversity can lead to better outcomes (from crops in fields to business activities; in terms of team composition as well as in decision making). As a Parish Council, we are not statistically diverse in terms of gender, racial background, age or life experience; and yet this is not as a result of democratic decisions by the electorate, but rather a lack of candidates aware of/willing to stand for the role.

This is something that I hope we can work to address so that, by the time of the next elections (in 2023), we have a large and diverse group of people representing all walks of life in our community to choose from. If anyone has any thoughts on how we can achieve this please do get in touch.

Additionally, if anyone has been affected by the recent events and feels they would benefit from discussing them I am more than happy to do so (I don’t have any answers, but I’m happy to listen!).

We are continuing to meet twice a month virtually with our county and district councillors joining us. It is very reassuring to hear the Covid-19 updates from county and district and we thank our councillors for keeping us updated and for the work they are doing in helping our district cope with this virus. Cllr. Caborn has made us aware of the scams that are affecting some residents. If you are contacted by ‘Track and Trace’ they will not ask you for money. The NHS is generally free at the point of use.

The draft accounts for 2019/20 were circulated to councillors. Our auditor will now inspect our accounts before they are forwarded to the external auditor who is appointed by the Government. The financial information will be updated on our website in the

next month.

We have finally been given approval to proceed with refurbishing our play equipment on the Meadow and the timing is perfect with outdoor play areas due to open in July. It will take around five weeks for the equipment to be installed. Many thanks to the Play Area Working Party who made this possible and the resident who unlocks and locks the gate for the contractors. Our clerk is liaising with the district council to ensure that we make these areas as safe as possible, and can comply with the Government guidance before opening - this also applies to the adult gym equipment on Warwick Gates.

Following concerns around entry to Bishop's Tachbrook Primary School County Cllr. Caborn has raised this with the Education Department at the County Council and the County Councillor responsible for this area.

The Home to School Transport Policy which could affect the way in which a pupil's Qualifying School is determined.

Currently, a pupil's qualifying school is defined as the closest school to the pupil's home with a space available and with the distance being measured by the shortest available route (driving route if over the statutory walking distance or walking route if the journey is less than the statutory walking distance). This may, therefore, not be the pupil's priority area school

but will be the one physically closest to their home address.

The proposed amendment to the policy would mean that a pupil's qualifying school could be one of the following -

- 1) The school is the closest to the pupil's home address that has places available and that provides education appropriate to the age, ability and aptitude of the pupil and takes into account any special educational needs that the pupil may have;

OR

- 2) It is the priority area school in which the pupil resides.
This could mean that some pupils would have two qualifying schools.

The consultation ends on 17th July. It is accessible via the Ask Warwickshire Consultation. Further details on our website.

We are in discussions with the District Council regarding the piece of land on Mallory Road near St. Chad's Road; Councillors have agreed that it should be fenced in a similar style to the Village Green. The land is owned by the District Council and we are asking whether they would be willing to transfer ownership to us which will enable the Parish Council to both fence and maintain it. We will keep you updated.

Thanks to the residents on Oakley Meadows who took part in the call with the management company and the developer. We believe it was a productive meeting and look forward to the maintenance issues being resolved. It was confirmed that the allotments will be transferred to the Parish Council and will not be the responsibility of the management company. We understand that credit notes will be issued to all Oakley Meadows residents.

Our new website will be live very soon. Thanks to Cllr. Brewster for providing much needed advice, guidance and drive to move this forward.

The Police have been active in our parish with their Warwickshire anti-speeding campaign. We have been experiencing some very extreme

driving during this difficult time so their presence has been very welcome. Community Speedwatch will be operating as soon as the Police say they can.

Cllrs. Herbert and Deely have been busy working on improving the Sports and Social Club driveway and car park. Thanks to Cllr. Carter the posts on the Meadow will be replaced very shortly. Until this work is carried out please be careful near the Meadow gate as the circular post needs replacing. Please do not allow children to climb the gate.

Our next virtual meeting is on 9 July at 6.30pm. If you want to join please contact the clerk the day before the meeting and she will let you have joining information.



Thanks to everyone who worked so hard to make the new playground a reality



Neighbourhood Plan

Regulation 16 Consultation

Our parish includes the new developments at Heathcote, The Asps and Oakley Grove, the village of Bishop's Tachbrook, the surrounding countryside, Heathcote Park and parts of Warwick Gates.

Our Neighbourhood Development Plan (BTNDP) sets out a vision for the future of these areas and planning policies which are intended to be used to determine local planning applications.

It's important!



If you haven't commented yet, the BTNDP Submission Version and all supporting documentation can be found here:

[https://www.warwickdc.gov.uk/downloads/download/419/neighbourhood_plans - bishops tachbrook](https://www.warwickdc.gov.uk/downloads/download/419/neighbourhood_plans_-_bishops_tachbrook)

Responses to the BTNDP must be received by **17:15 on Monday 10 August 2020**. They can be submitted in the following ways:

Via Warwick District Council's [online consultation system](#)

·By email to: planningpolicy@warwickdc.gov.uk



Follow the

Bishop's Tachbrook

Hero Scarecrow Trail



Tuesday 14th July
to
Sunday 19th July

Free entry for your hero character (real or fictional) by 19th June!

To register, email:

btscarecrow@gmail.com

Trail map available when you donate to Just Giving website:

"Bishop's Tachbrook Scarecrows"

Community fundraiser to replace cancelled village events and to go towards the school, fireworks and church.

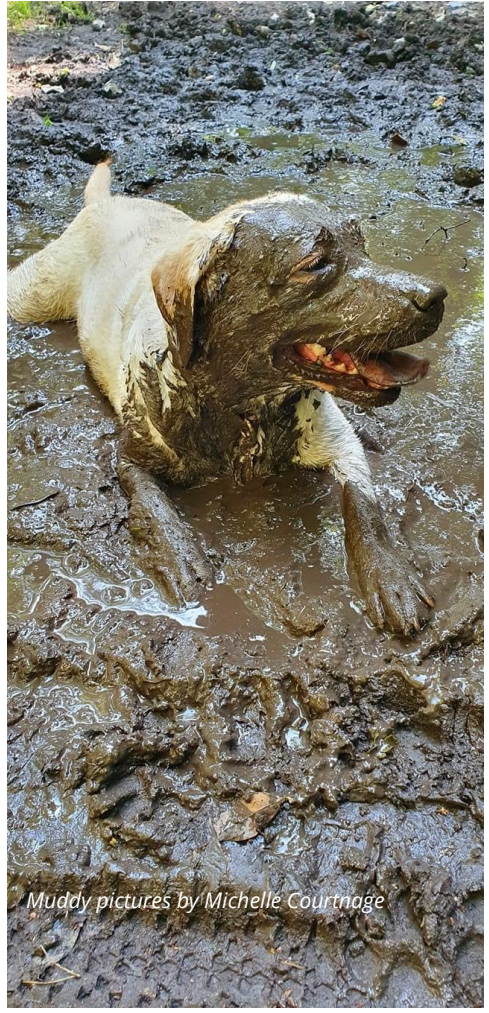
Photoshop

Pictures sent in by readers



Pictures on this page by Silvena Toncheva





Muddy pictures by Michelle Courtnage



The M40 interesting facts and pictures



The M40 motorway links London, Oxford and Birmingham, a distance of approximately 89 miles (143km). The first section was opened in June 1967 around the south and west of High Wycombe, between what is now junction 4 (Handy Cross) and 5 (Stokenchurch). By the 1970s the M40 was a continuous route from London to Oxford, and in the early 1980s a decision was taken to extend it to Birmingham to relieve the M1 and M6 by providing a second motorway from the South East to the West Midlands. The final section of this new cross-country motorway opened in 1991.

The M40 is managed by a private company

In the late 90s and early 2000s, Private Finance Initiative (PFI) contracts were everywhere, and the roads were no exception. A consortium called UK Highways M40 Ltd. successfully bid for a Design, Build, Finance and Operate (DBFO) contract that involved widening the M40 between junctions 1A and 3 to add a fourth lane each way and to replace a concrete surface between Stokenchurch and Wheatley with tarmac.

Normally DBFO contracts involve the company then running things for 30 years after they've built it - that's how it works with hospital buildings, and that's also how it works on other

DBFO roads. But in this case, UK Highways' contract required them to run the *whole* of the M40 from London to Birmingham, which they do to this day, funded by ghost tolls.

Its route was changed by the most ingenious anti-roads protest ever

The M40 between junctions 8A and 9 was originally planned to run through an area of wetland called Otmoor, which was controversial to begin with and became even more so when the Public Inquiry recommended another route and the Department of Transport decided to build it there anyway.

Friends of the Earth acquired a field on the line of the route, which they named Alice's Meadow (after Alice in Wonderland, said to have been inspired by the landscape there). The land was broken up into 3,500 tiny plots, which were all then sold to 3,500 different people, many of them overseas. To build the motorway, the DTp would have to pursue compulsory purchase procedures against thousands of people, none of whom would be easy to find, not all of whom would even be resident in the UK, and all of whom would be entitled to appeal. It would almost certainly mean huge legal bills and long delays. Whatever you might think about environmental protests against road projects, you have to admit that this one was rather brilliantly inventive. Partly as a result of the protest, the line of the motorway was amended to the one recommended by

the Public Inquiry and Otmoor was saved. The law has since changed so that tiny parcels of land - which could be bought and sold freely at the time - are now subject to fees that would mean the same tactic wouldn't work today.



Otmoor Heath

A local section was once part of the Warwick Bypass

Warwick already had a southern bypass before the M40 came along, and the motorway uses part of its line. The A452 leading on from junction 14 is what remains of it - it then went over the Avon using what is now the bridge carrying the southbound M40 and ended at Longbridge Roundabout. The bypass opened in the mid 1960s and was originally part of the A41, which was downgraded and renumbered when the M40 arrived. Just south of J15 at Warwick. The two bridges that cross the River Avon are separate and quite distinctive, with the carriageways separated by about 50yds. The southbound bridge is a concrete arch dressed in stone, while the northbound is a beam bridge on

circular columns. The southbound side bridge is older and was part of the bypass.

It's a star of film and TV

Before the first section of M40 had opened, the bridge carrying Bigmore Lane across the new motorway became the star of the *Thunderbird 6* movie when wartime pilot Joan Hughes flew a Tiger Moth plane under it in a daring stunt.

The Ministry of Transport had agreed on the condition that the plane's wheels were on the tarmac when it went under - but on approach Hughes decided the crosswind made a landing too risky, so she flew under instead without touching down. She, and the company she worked for, found themselves in court the following year on charges of dangerous flying - but were acquitted.



Joan Hughes flies her Tiger Moth plane under the Bigmore Lane Bridge in a daring stunt.



This picture with shows a field before the motorway was constructed upon it. To the right of the bales is the old A41 Warwick Banbury Road and you can see the edge of the Oakley Woods on the horizon.



WI

By Anne Allen

Another month has passed by, yes things are getting a little easier but..... My garden has been open for visitors in need of a cup of coffee or tea courtesy of Ray. We all need a change of scene. As somebody who doesn't agree with online shopping I've found it difficult . Wellesbourne Sainsbury's is brilliant 5-10 minutes queuing max. but you can't buy everything in a supermarket. Grandchildren's sandals for example. I'm getting there though. Last month we had our first Zoom meeting with nearly 20 joining in.

Thanks to Heather, Elaine and the speaker, Alison Foster for arranging this. Alison's talk was on the use of plants in medicine. I know a couple of us had major problems with crashing when slides were being shown (yes it was me) but in general the feedback was very positive. Hoping to do the same this month the talk was to have been the history of nursery rhymes . Unfortunately the speaker feels his talk will not work on Zoom so we are hopefully having a virtual bingo evening instead.



Warwickshire, as a Federation , is rejoicing at the moment. Not only is the National Chairman, Lynne Stubbings a member of Wishaw WI but one of the Vice Chairmen is Jeryl Stone a member of Hampton Lucy WI. Many congratulations to them both. Over the years I have served on many County Committees with them both. My eldest granddaughter thinks it's great Nana gets Christmas cards from the Big Boss of the WI.

County are starting to organise a selection of events for us to enjoy. Including a walking tour around Oxford ,archery and an Abba evening in September . Two literary lunches and a trip to Windsor in October and Indian block printing plus a visit to Manchester Christmas market in November . Hopefully these events will be able to go ahead. We will have to wait and see.

Recently we held our first book club since the start of lockdown in Marion's field. Do you remember that recent Wednesday afternoon we had a slight

thunderstorm just overhead. Fortunately the hay barn was empty and we took refuge in there. See what you are missing by not joining the WI I didn't get so many entries for the flower competition this month. Just two plus mine. Let's try and do better next month. I know the wind and rain has bashed a lot of blooms but you must have one hidden away

Last month all members had a goodie bag. Again well received I'm dong the same again . Something to keep us all in touch and motivated. When all this is over and life becomes normal again please think about joining WI. Even though we are not together at the moment, we are still all at the end of the phone or in the garden etc. offering support to those who need it. We still are able to laugh and have fun.

Anne Allen 424135



News from Heathcote Park Homes

By John Walters

We have a number of residents who are over 75 and also some who will have been advised to shield. Therefore many have been reliant on and grateful to family and friends who have been assisting with shopping and collection of medications. The offer of support from the President of Warwick Gates WI has been a useful standby, and I also might mention that the son of one resident, also offered to do whatever needed doing for any resident. It seems plenty of internet shopping has been going on judging by the number of delivery vehicles and supermarket vans coming on to the park.

We have a group of neighbours and friends who keep a non-intrusive but considerate eye open for people on the Park. This has given us a feeling of confidence in these peculiar times.

As far as we are aware no-one on the park has contracted the virus. Residents have been able to exercise by walking or cycling around, a distance of almost a mile, and tending gardens has also kept everyone busy and fit.

The regular committee meetings of the Association were postponed, and bulletins issued instead until 6 of us were able to meet on 1 June outside on our green space.

The celebration of VE Day also had to be abandoned but you could mention that a display of memorabilia was available for residents to view whilst they were out exercising. A couple of Land Army girls were also seen.



Poetry Please

A Vision

By Simon Armitage

The future was a beautiful place, once.
Remember the full-blown balsa-wood town
on public display in the Civic Hall.
The ring-bound sketches, artists' impressions,

blueprints of smoked glass and tubular steel,
board-game suburbs, modes of transportation
like fairground rides or executive toys.
Cities like dreams, cantilevered by light.

And people like us at the bottle-bank
next to the cycle-path, or dog-walking
over tended strips of fuzzy-felt grass,
or model drivers, motoring home in

electric cars, or after the late show -
strolling the boulevard. They were the plans,
all underwritten in the neat left-hand
of architects – a true, legible script.

I pulled that future out of the north wind
at the landfill site, stamped with today's date,
riding the air with other such futures,
all un-lived in and now fully extinct.

They should have asked my husband

by Pam Ayres

You know, this world is complicated and imperfect and oppressed,
And it's not hard to feel timid, apprehensive and depressed,
It seems that all around us, tides of questions ebb and flow,
And people want solutions, but they don't know where to go

Opinions abound but who is wrong and who is right?
People need a prophet, a diffuser of the light,
Someone they can turn to as the crises rage and swirl,
Someone with the remedy, the wisdom, the pearl...

Well they should have asked my husband, he's a man who likes his say,
With his thoughts on immigration, teenage mums, Theresa May,
The future of the monarchy, the latest Brexit shocks,
The wait for hip replacements, and the rubbish on the box.

Yes, they should have asked my husband, he can sort out any mess,
He can rejuvenate the railways, he can cure the NHS,
So any little niggle, anything you want to know,
Just run it past my husband, wind him up and let him go.

Congestion on the motorways, free holidays for thugs,
The damage to the ozone layer, refugees, drugs,
These may defeat the brain of any politician bloke,
But present it to my husband, he will solve it at a stroke.

He'll clarify the situation, he will make it crystal clear,
You'll feel the glazing of your eyeballs and the bending of your ear,
You may lose the will to live, you may feel your shoulders slump,
When he talks about the President, Mr. Donald Trump.

*Upon these areas he brings his intellect to shine,
In a great compelling voice that's twice as loud as yours or mine,
I often wonder what it must be like to be so strong,
Infallible, articulate, self-confident and wrong.

When it comes to tolerance, he hasn't got a lot,
Joy riders should be guillotined, and muggers should be shot,
The sound of his own voice becomes like music to his ears,
And he hasn't got an inkling that he's boring us to tears.

My friends don't call so often, they have busy lives I know,
But it's not every day you want to hear a windbag suck and blow,
Google? Safari? On them we never call,
Why bother with computers...when my husband knows it all.



Domesday—Tales of 5 women in 1086

By Peter Lister



keeping of a good household and producing children to keep a family line going. By and large married women had very little in the way of independence in their own right, and what powers they had usually derived from the position of their husbands.

There were, however, exceptions to this generality. There were some women who, because of high birth, were able to have their own property rights granted to them or whose husbands saw to it that they were granted some of their own holdings as widows' or dower rights. This protected them should the husband die first. Without such rights, the widow's position and future would be uncertain and decided for her by the family.

The position of women in the upper levels of society in the eleventh century was generally very much restricted. Marriages were arranged between families with a view to keeping or gaining prestige. The transferring of landholdings by the bride's family was all part of this system and the father of a prospective bride had to weigh all this up very carefully. The feelings of young women in such matters were largely irrelevant and love matches leading up to marriage were probably very rare indeed. Once married, women were expected to be subservient to their husbands, their principle roles the

The Domesday records for Warwickshire show that of the 366 manors listed in 1086 only 13 were held by women, either as tenant-in-chief or as a sub-tenant - only 3% of the manors in the shire. You will see the point that it was very much a man's world. The 13 manors were held by 5 women: two holding only one each, one holding two, one holding three and the remaining six by someone who was actually dead in 1086. It makes for a somewhat confusing picture. The five were, in order of social precedence: Countess Godiva (Lady Godiva as we know her),

Princess Christina, Edith, Leofeva the nun, and Adeliza (wife of Hugh of Grandmesnil).

My previous article about the town of Warwick noted that 27 'barons' had been allocated properties in the town. Of the five women referred to in the paragraph above, only two were allocated such properties in 1086: Princess Christina and Leofeva the nun.

Given the distance in time since the Domesday survey was carried out, it is not always possible to get much in the way of biographical information about some of these women, but the remaining article will try and set some flesh (in one case literally) on the bare bones of just their Christian names as provided in Domesday.

Edith

Edith is recorded as tenant-in-chief for **Bickmarsh**. This community was split into two manors: this, the more substantial one, recorded as under Warwickshire, the other in Gloucestershire. She held both of them in 1086 as she had before the Conquest. Just who she was presents something of a conundrum. Some scholars think that those who were compiling the information for the Domesday survey rather mixed up the Latin version of Edith with another name, Edeva. In that case, she could have been the Edeva who was also

lord of the manor of Chaddesley, a very substantial manor in Worcestershire. However, both entries for Bickmarsh clearly indicate to me that the name Edith was intended. There were a number of prominent Ediths who could be candidates for this manor. There was Queen Edith, widow of King Edward the Confessor, but her royal status should have been recorded in the entry, and this is not the case. King Harold, who died at Hastings, had married two Ediths. The first, who he had set aside, was the one who had the gruesome task of identifying Harold's mutilated body after the Battle of Hastings. His second wife had been rushed off into exile immediately after the battle. I doubt that it would have been any of these Ediths.

In the end, my preference is for an Edith who could have been a daughter of Earl Aelfgar of Mercia. The earl had died a few years before the Conquest, but Bickmarsh had certainly been linked to that family.

Leofeva the Nun

Leofeva is connected with two manors in Warwickshire: **Little Lawford**, where she was a sub tenant to Thorkill (one of the great survivors among the Anglo-Saxon world by refusing to support King Harold), and **Salford Priors**, which she held from the King. She also had been granted two properties in Warwick itself, showing that she was a woman of some status.

It is likely that she had been abbess at Shaftesbury Abbey in Dorset. This had been established by King Alfred the Great in the ninth century and, as a royal foundation, was a wealthy religious establishment, housing as it did the remains of King Edward the Martyr who had been murdered in 978. Leofeva was replaced as abbess in 1074 and it may be that she was pensioned off. Certainly Salford Priors is one of two manors that are described as being the King's Alms Lands. Edith (referred to above) was granted the other.

We now move into considering three women who have left a more certain history.

Adeliza - Wife of Hugh of Grandmesnil

I am afraid that I must fall into the trap of beginning with Adeliza's husband, Hugh. The de Grandmesnil family were famed in Normandy for breeding and training war horses. The family suffered during the time when Duke William was in his minority and various factions fought for power. Hugh supported the duke and eventually took part in William's invasion in 1066 as a cavalry commander. For this he was richly rewarded with 100 English manors, most of them in Leicestershire but 18 of them in Warwickshire. He married a renowned beauty, Adeliza, daughter of Ivo, Count of Beaumont-sur-l'Oise,

from whom he gained estates in Herefordshire. By 1086 she had a number of manors granted to her in her own right, presumably to give her security should Hugh die before her. Only one of these was in Warwickshire, **Middleton**, and this was the very last recorded on the index. In the event, Adeliza died in 1087, the year after Domesday, while at Rouen in France and was buried in the Chapter House of the Abbey of St. Evroult. Hugh survived her for seven years before dying at Leicester in 1094. His body, preserved in salt and sewn up in the hide of an ox, was taken to France, where it was also buried at the Abbey of St. Evroult.



Princess Christina

The name of Christina, when I first saw it on the Warwickshire index list, puzzled me. I had no idea who she was. Research shows that she was the

granddaughter of King Edmund Ironside. After a very brief reign as King, Edmund died in 1016, shortly after King Cnut had effectively taken the kingdom. Cnut immediately exiled Edmund's very young family abroad and one of the sons, Edward, eventually settled in Hungary, where he had three children, among them Christina. King Edward the Confessor, who was childless, eventually discovered that Edward the Exile was alive and arranged for him and his family to come back to England in 1057. He hoped that Edward the Exile would succeed him, but, having just arrived back, the Exile died a few days later. When the Confessor himself died in 1066, Edward the Exile's son, Edgar Aetheling, was considered too young and untried by the Witan (the King's Council) to become king, and they appointed Harold Godwinson to the kingship. After the catastrophe of Hastings, some of the Witan, in those desperate circumstances following the battle, did appoint Edgar as king, but he had almost immediately to submit to William the Conqueror.

Because of the family's links to Edward the Confessor, Christina was regarded with honour by King William and eventually became abbess of Romsey Abbey. Her exact date of death is not known but seems to have occurred sometime in the mid 1090s.

Lady Godiva

There can be very few who have not heard the name of Lady Godiva. She has passed into the folk lore of this country as perhaps the most well known Anglo-Saxon noblewoman. Her ride, naked on a horse, through the streets of Coventry has certainly captured the imagination and is still remembered and celebrated in Coventry to this day. According to the legend, she undertook the ride as a dare to persuade her husband, Earl Leofric of Mercia, to remit a burdensome horse tax on the town. I do use the word 'legend' advisedly. The earliest version of the story appeared in the writings of a certain Roger of Wendover, a monk of St. Alban's Abbey, in the thirteenth century. He has been described as a "gullible collector of anecdotes". Whilst I may share the scepticism about the legend, it certainly has gained the popular imagination and has a life of its own.

What we can be certain of is that Godiva and her husband, Earl Leofric of Mercia, were notable benefactors of many religious foundations, including the abbey at Coventry. The Earl died just before the Conquest and was buried in the abbey church at Coventry. The outline of its church is marked out in the city today, not far from the present cathedral.

Lady Godiva's status is reflected in the fact that before the Conquest and following her husband's death she had 46 manors, with 12 of them being in Warwickshire. In the Domesday survey

of 1086 that had been reduced to 11, six of them in Warwickshire. This seems particularly odd, given that she had died sometime between 1066 and 1086. King William it seems was content not to redistribute her manors, but to keep them in her name and let them be run by a certain Nicholas the Bowman, with the revenues going to the royal exchequer. Perhaps a cunning ploy? Claims were made that after her death she was buried at Evesham, but the balance of views among historians is that she was also buried with her husband in the church at Coventry Abbey.

Whilst the life of the peasantry was probably little changed in practice by the conquest, at the level of those in the upper echelons of the Anglo-Saxon world there were vast changes, with many losing what would have been cherished property rights and, of course, the income that went with them. Of the five women whose stories I have given, it is interesting to note that four of them were Anglo-Saxons, with only Adeliza a blue blooded Norman.



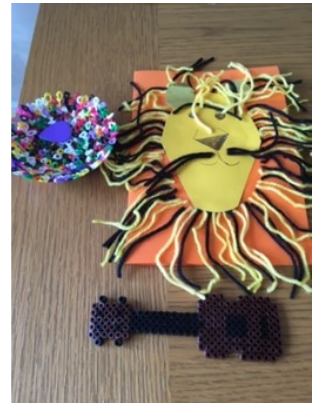
Few in number they may have been, but all were remarkable women who lived through some challenging and remarkable times.

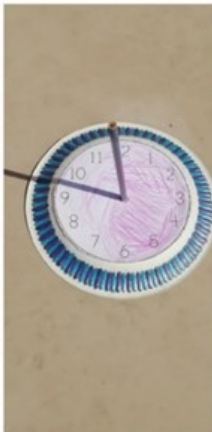
Rainbows and Brownies

Caroline Whitwood

We're really missing seeing them but our Rainbows and Brownies have been very busy working on their badges at home – so far the following girls have achieved badges this month: Rainbows: Priya, Cerys, Libby, Olivia, Daisy, Amelia N, Maddie, Immy and Evie S and Brownies: Chloe D, Isla, Lilly, Sophie B, Annabelle S, Aika, Alexis, Harriet, Gabriella, Hollie, Sophie T, Izzy B, Kaiya and Keira E. The badges covered were Toymaker, Craft, Brownie Traditions, World Cultures, Cook, Home Skills, Designer, Friend to Animals, Booklover, Cyclist, Wildlife Explorer, Communicator, Brownie Skills, Healthy Heart, Gardener, Artist, Seasons, Number fun, Painting, Collector, Helper, Fruit and Veg, Family Tree, Drawing, Healthy Mind and Animal Lover – what a terrific array of different skills they're learning and what a lot of badge sewing for girls

and parents! Great work girls! They've also been taking part in more weekly challenges set by the Owls. This month, they've worked on their World Traveller and Explore Skills Builder badges, completed a construction challenge involving towers, marble runs or making toys and then they took part in a Disney dancing challenge to remind us of our TAGS show which should have been in June – they each sent in videos of one of the dances and we made a video montage of all the girls dancing the whole dance. Last week, they made Father's Day cards and gifts and this week, they are working on a Challenge At Home badge involving lots of different fun activities and some County challenges. Pictured below are some of the girls doing their challenges





Nature Page

By Steve Harvey

It was in the middle of the night when we were woken by a noise. The moon shone through the bedroom window as we heard a half howl, half bark and it was moving. The call got louder, steadily coming towards the cottages. It was running down the lane. Was the legend of the Werewolf really true? . . .no, sorry, just a Dog Fox on boundary patrol. It called and howled for a few minutes then an answer came. It's rival Fox calling back with the same sound. The two of them spent the best part of an hour shouting at each other, proving their points. "Meeting jaw to jaw is better than war" (Thank you Mr. Churchill).



Next day a more gentle call was heard and one I hadn't heard for a few years. Flitting about the Cedar tree was a Spotted Flycatcher. It's young were all parked in the wide branches calling for food. Flycatchers are about the size of a Robin and live up to their name often waiting on a branch for an insect to fly past. They dash out, catch it and return to the branch.

In April I glimpsed a Cuckoo flying along the edge of the park, then off to towards Ashorne. They look very hawk-like with pointed wings but, unlike a

hawk, they have a dithery flight. Considering they fly to Africa and back it must be stronger than it looks!

By late May the young Blue Tits were preparing to launch. One left, possibly by accident, a day earlier than its siblings. It fluttered to the ground - not a good start. Its parents came down and encouraged it up to a bush, then a fence and finally a tree. It took them twenty minutes. They continued to feed the others in the box. It wasn't until the next morning that the other chicks fledged. One parent brought

food to the box but wouldn't give it to the chick. It flew back and forth encouraging the youngster to "come and get it!"

Eventually over a couple of hours they were all out and escorted to the big Magnolia, conveniently near the bird feeders, massively cutting their work down. Sunflower hearts were broken up and fed to the fledglings. This was all new to the little fluff balls. One sat on top of the pile of food on the bird table fluttering its wings and asking to be fed. Within two days they were just about self sufficient. Now their parents could take a breather.

Pheasant update My favourite Pheasant still comes to feed from my

hand, but not so much. The silverback male, who spent ages hopping on one leg after a suspected sprained foot, is totally mended. As if to prove his fitness he mated with his female almost on my foot! I was surprised and so was she, quickly taking off and flying out of sight. He shook himself down and followed her.

The evenings end with singing frogs in Pat's pond next door. They make a pleasant beeping sound every four or five seconds until just after dark. Then, up in the Cedar tree this year's Owlets begin their sneeze-like calls asking for food as their parents hunt along the fields. So nice to have the little Tawnies just outside the bedroom window.



This moth was spotted in an Argyle Way garden. It's a Scarlet Tiger! Stayed for about half a hour then left.





News from Heathcote Primary School

What a busy time we have had at Heathcote since I last wrote to you all. We have been supporting all our families during partial closure with their home-school learning and their welfare. The children have done brilliantly and we have been super impressed with all of their learning. On June 2nd we engaged in wider opening and welcomed our Reception and Year One children back to school. It was absolutely fantastic to hear the sounds of children laughing and singing in our classrooms again on that first day.



The children have slotted back into daily routines really well and it is as if they have never been away. Our parents have adapted really well to our drop off and pick up staggered timings and understood how important it is to maintain our 2m social distance as they join the queue for school. Hand-washing is a natural part of our day and the children have quickly learnt that before they share a resource with someone else it must be thoroughly cleaned. We spend a lot of time outdoors enjoying our wide-open spaces. Forest school has been super busy and the children have all learnt to play non-contact games such as 'shadow tag' or 'follow the leader.'



It has also been great to watch our new building grow even more. By the time the majority of children returned the foundations were dug and prepared ready for the walls of the school to go up. These went up in a week! The roof will only take a week and then windows go in and the inside prep begins. The landscaping is also starting to take shape. We can't wait to see the amphitheatre. Mrs Abernethy and I visited the site and went up on the roof to look down into the school in all its glory. What an amazing view it was. We can just picture all of the children over the years chattering away and learning.



As I write this piece of news we are planning to welcome back our Year 2, 3, and 4 children for 'Keeping in Touch' days. We can't wait to see them and talk to them about what September will look like and catch up with their home learning. All of the children who are still at home are always sharing their incredible craft work, environmental studies and baking to name some of the things they get up to. The children at home and in school have been considering our whole world on 'World Ocean Day'. The artwork and thought-provoking writing they produced made us proud. We now have a lovely display in school to remind everyone about the importance of our world. Maybe some of the lessons we have learned during lockdown will stay with us; we'll use cars less, reduce plastic even more and protect our world together.

'There is nothing more beautiful than someone who goes out of their way to make life more beautiful for others.'

Mrs Humphriss – Executive Head Teacher.



LOCKDOWN LIFE AT BT SCHOOL

It's a strange old time trying to learn with 2m social distance. It's only a few months ago that we were working shoulder to shoulder in every class like this:



Of course, we are developing a completely new way of working which looks more like this; can you see how carefully every desk is spaced 2metres apart?



The staff have been working so hard from home too, setting work for every pupil online and marking this every day. Our Key worker children, many of whose parents work in the NHS or other front line jobs have been able to attend school every day since lockdown, including through the holiday and half terms. So school life has changed but we haven't stood still.



The Business Interview

Christine Lynne Burke Photography

We catch up with a local business woman, Christine Lynne Burke.

What is your name and what is your business called?

My name is Christine and my business is called Christine Lynne Burke Photography

How long has your company been in business?

I've been working for myself now for 18 years.

In which industry is your business?

I am a specialist in location portraiture for families, children and dogs.

Why do people use your business, what do you offer they want or need?

Families use my services to create special photographic portraits of their loved ones be they 2 legged or 4! The sessions can be entirely about the dogs or the kids or a combination of family portraits with their 4 legged friends. Its very popular, especially with people who adore their dogs! If the owner needs to use a lead or be in the shot in order to assure the dogs or children I can use Photoshop afterward to retouch them out of the picture. It's a lot of fun!

What motivates you?

I love working with kids and dogs, there is never a dull moment and the reaction that the portraits create is like the cherry on top of the cake. I feel very lucky to be a photographer!

What makes your business unique?

What makes my business unique is the style of portraits and the amount of patience I provide in order to create these images. They have gone on to win many awards at National and International level and I work hard to provide the best customer service possible. In 2019 I was ranked 2nd in the world for children's portraiture by the Society of Wedding and Portrait Photographers and recently found out that another of my images has ranked again. I will find out towards the end of the year if I am in the top 3 again, and that was really great news to get during lockdown!

What impact has the Covid19 pandemic had on you and your business?

Now that Coronavirus has struck I'm doing my shoots outdoors and all viewings are now done online. The impact of Covid 19 on the business has been

significant, I am usually rammed with work during the bluebell season, I am extremely pleased and relieved that the restrictions are now being lifted and we can start back to some form of normality and outdoor shoots are thankfully the safest route forward. The lockdown has also allowed me to try out new techniques and discover a new passion, Flower Photography, and I've just won a Silver Award with the Guild of Photographers for an image taken on one of my walks around Bishop's Tachbrook

What makes a good picture?

Lighting and expression are always key factors for me, I could drill down into the technicalities of image making but the most successful images are those that speak to our heart and generate an emotional response. I have a special box of tissues that is in regular use in my viewing room, knowing that the work I produce can move people to tears is the highest accolade possible.

Who is your favourite photographer, why?

Henri Cartier Bresson is my favourite and possibly most influential photographer, his work centres on what he called the "Decisive Moment". In the digital age it's even more important than ever now and there is a real skill in being able to predict when that moment is about to happen, his work has taught me to stack all the technical odds in my favour and then watch for the magic to happen. I've learned so much from looking at his work he really was one of the greatest photographers to ever live and reflects his great patience and technical skill.





Christine Lynne Burke
PHOTOGRAPHY



Christine Lynne Burke
PHOTOGRAPHY





Christine Lynne Burke
PHOTOGRAPHY



The kids zone

Sudoku

			7	6	9			
					2	7		5
	8		3	5	1		9	4
		4		8	6	9		
7		1				5		6
		3	9	7		4		
3	7		5	9	8		4	
2		5	6					
			2	3	4			

Let's preserve our nature

by Aryun

The sun is shining,
The sky is blue,
The birds are flying,
And the breeze is so cool.

Mother Nature is trying her best
To give nothing but beautifulness,
But what do we do?
Make her a mess.

Let's make her the best
By polluting less and less,
And preserve her green dress
For our kids and the rest.

Animal Jokes!!

How do all the oceans say hello to each other? They wave!

What did one wall say to the other wall? I'll meet you at the corner!

What do you call a bear with no teeth? A gummy bear!

What do you call cheese that's not yours? Nacho cheese!

What do you get when you cross a snowman and a vampire? Frostbite!

Why are seagulls called seagulls? Because if they flew over the bay, they'd be bagels!

Why did the girl smear peanut butter on the road? To go with the traffic jam!

How do you make a tissue dance? You put a little boogie in it.

What do you call a fake noodle? An impasta!

Why couldn't the pony sing himself a lullaby? He was a little hoarse.

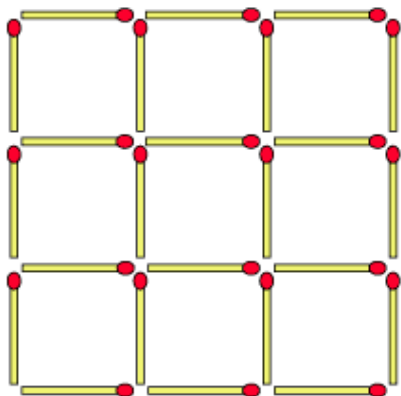
What's a pirate's favourite letter? Rrrrrrr!

Colour the dinosaurs

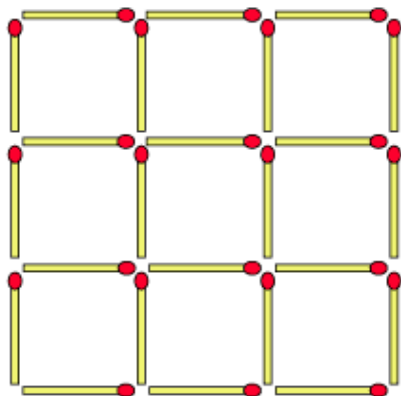


Puzzle time

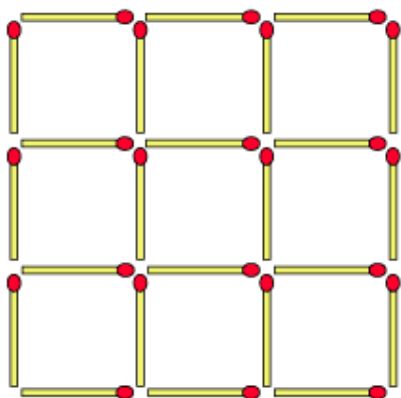
Remove 11 matchsticks to leave
4 squares



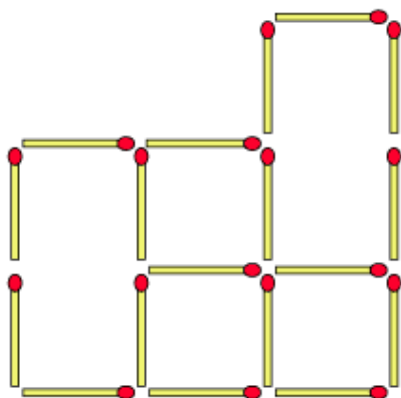
Remove 5 matchsticks to leave
6 squares



Remove 6 matchsticks to leave
3 squares



Remove 4 matchsticks to leave
2 equal shapes



Word search—Harry Potter

Harry Potter

F	F	L	H	I	P	P	O	G	R	I	F	F	W
F	U	A	E	H	E	R	M	I	O	N	E	R	E
U	Y	R	S	T	D	L	V	D	R	O	A	D	A
P	E	N	C	D	L	Y	D	O	E	V	L	A	S
E	D	B	A	M	S	I	R	L	E	A	O	S	L
L	P	I	R	E	E	D	S	N	N	L	T	F	E
F	O	A	R	E	G	A	C	O	H	R	N	L	Y
F	T	R	A	G	P	L	R	L	A	B	S	G	O
U	T	I	I	T	A	W	S	K	O	U	E	R	N
H	E	S	H	W	A	H	R	E	B	F	N	A	F
Y	R	R	A	H	R	A	L	L	O	R	R	N	O
R	R	O	L	R	D	T	A	D	P	V	D	G	L
D	U	M	B	L	E	D	O	R	E	A	I	E	P
G	N	I	L	W	O	R	K	J	I	A	F	R	R

RAVENCLAW
ALBUS
HIPPOGRIFF
HERMIONE
HAGRID
POTTER
DARK ARTS
HUFFLEPUFF
GRANGER
WEASLEY
HARRY
SCAR
J.K. ROWLING
DUMBLEDORE
RONALD



List of advertisers

Food and drink	Bishop's Tachbrook Sports and Social Club Lizzy Pickles
Financial Services	FMS Warwick Ltd
Funeral Services	C Pullin and Sons
Garden Services	Murley Garden Machinery Tom Rodgers Tree Services
Health & Beauty	Lynn Hemmings, Chiroprapist Revival Holistic Treatments
Home Improvements	Complete Flooring Diamond Interiors Drop Dead Gorgeous Curtains Jordans, Foam
Trades	Andy Veal Plumbing & Heating A Sparkes Electrical Services Simon Systems
Miscellaneous	Ashorne Hill CSL Driving School Eternal Flowers Iron Lady Locke & England Auction Sales & Valuations Squab storage Wag About Town dog walking

Bishop's Tachbrook Sports & Social Club

**Due to the Governments advice on stopping the spread
Of Covid-19 The Club is closed until further notice**
Please stay at home and keep safe.

July, August and September

Entertainment for July and August has been suspended; September's entertainment is to be confirmed and will be in line with Government guide lines. If the Lockdown restrictions change and we can re-open we will notify everyone via social media.

September

5th September – Party Disco

Come and have a great night out dancing to your favourite Disco classics.

12th September – Family Bingo

Great prizes to be won at our Family Bingo Eyes down at 8.00pm for a fun family night out.

19th September – To be Confirmed

26th September – Quiz Night

Pit your wits against the Judge and his mind boggling Quiz designed to outsmart even the best quiz specialist's prizes for every team.

While the Club has been closed we have been busy finishing off the new dog area in the club grounds enjoy a pint or prosecco with your pooch in the new seating area when this Lockdown is all over.

We have also purchased a New Bouncy Castle for the children to enjoy once the Club is open again and distancing restrictions are reviewed.

All the Best to our Members from the Staff and Committee of

Bishop's Tachbrook Sports & Social Club

Stay Safe and take care of each other

we hope to welcome you

Back to the Club soon.

Contact Us



www.bishopstachbrookclub.co.uk



01926 421621/07855709051



enquiries@bishopstachbrookclub.co.uk



bishopstachbrookclub



Lizzy Pickles Catering

Your Local Caterer

- For All Occasions
- Business Lunches
- Parties
- Weddings
- Christenings
- Funerals
- Buffets
- Training Sessions

Home of the Lizzy Pickles Sausage Roll

Most Items Homemade

Menus Tailored To Suit Your Needs

Lunches and Buffets from £3.95/head

Established over 10 years

To Discuss Your Catering Requirements call:

Lizzy Pickles

Tel: 01926 422438

Mob: 07917 036757

email:lizzy.pickles@tiscali.co.uk
Kingsley Rd, Bishops Tachbrook

REVIVAL

Holistic Treatments by Kerry

Acre Close, Whitnash. Leamington Spa.
01926 427352 / 07890 444870

Body Massage from £22.00 - £31.50 (30, 45 or 60 mins)

Hopi Ear Candles £24.00 (Special rates for under 16s)



Indian Head Massage £29.00

Reflexology £29.00 (Special rates for under 16s)



Special combined treatment offers*

Back Massage & Hopi Ear Candles £36.00 (Usually £46.00)

Back Massage & Reflexology £37.50 (Usually £51.00)



Gift Vouchers available

Free parking

Call for our latest offers and further information on any of the above treatments

* Combined treatment offer only applicable when taken together during a single appointment



TOM RODGERS Tree Services

All aspects of
tree and hedge work

Stump
Grinding

Local authority
approved

Free
Estimates

Competitive
Prices

Member
of
Arboricultural
Association

Tree
Dismantling

24 hour
call out

Professional and Friendly Tree Care Service

www.tomrodders.co.uk Tel. 01926 810716 or 07958794180

FOR ALL YOUR GARDEN MACHINERY NEEDS



For further details contact us at
01926 494336 | www.murley.co.uk
Nelson Lane Warwick CV34 5JB



MURLEY GARDEN MACHINERY

VISITING

QUALIFIED

CHIROPODIST

Mrs Lynn Hemmings
MSSCH, MBCHA

01564 784466

FOAM

CUT TO ANY
SHAPE & SIZE

Replacement sofa
cushions a speciality

JORDANS

14 High Street
Leamington Spa
CV31 3AN
Tel. No. 01926 421330

Complete FLOORING

Carpets Vinyls Wood

- *** Supplied and fitted
- *** Sample swatches
- *** Free quotes
- *** Re-stretches/adaptions

(Will fit customers own Materials)

Call Dylan 07866 638674 / 01926 315116

Email: dylan126@btinternet.com





Kitchens & Bathrooms



Quality Kitchens, Bathrooms, Bedrooms and Home Studies.

◆
Family Run Business, Established 1985.

◆
Made to Measure Replacement Doors

◆
Fully Fitted or Supply Only

◆
Our Own Employed Fitters



◆ **Diamond Interiors** ◆

◆ 01926 332288 ◆ www.diamondinteriors.net ◆

◆ 27 Hurlbutt Road, Heathcote Ind. Estate, Warwick CV34 6TD ◆

Drop Dead Gorgeous Curtains.

Beautiful Bespoke Curtains, Cushions and Roman Blinds
all made to measure.

Curtain alterations and restorations also undertaken.

All items are handmade by myself, a fully qualified soft furnisher.

From fabrics to poles, all your needs are catered for.

I'm also happy to work with customers own fabric.

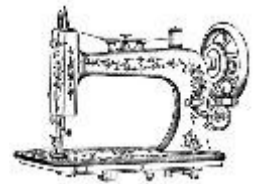
Free measuring service, no obligation quotes and free curtain fitting and dressing.

Call Sharron for friendly and helpful advice, or to make an appointment on
07760395805 or 01926 718220

Email; dropdeadgorgeouscurtains@gmail.com

Website; www.dropdeadgorgeouscurtains.com

Find me on Facebook and Instagram.





Do you run a business and are any of the following a burden?

- * Company accounts *
 - * VAT *
 - * Taxation *
 - * Payroll Services *
 - * Company Secretarial Work *
- Or do you need new systems and procedures?

If the answer is yes, then contact us.

FMS (Warwick) Ltd
 114 Kingsley Road,
 Bishops Tachbrook
 Tel: 01926 314286 (Evenings)
 or 07802 735491
 michael.jaggard@btinternet.com
 (Sage & Inland Revenue Agents)

Why not try our classic car

C PULLIN AND SON

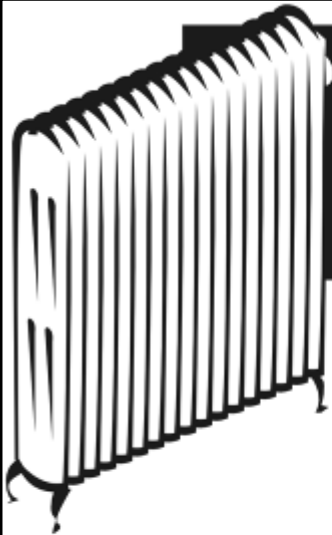
Monumental Masons

Five generations
 of Quality Manufacturing
 and Service

All Aspects of
 Monumental Masonry



Showroom at: 19A High Street
 Leamington Spa CV31 3AW



ANDY VEALL

PLUMBING & HEATING



TEL: 01926 315387

Gas Fitting • Central Heating
 Plumbing • Bathrooms • Showers
 Landlord's Gas Safety
 Installation • Servicing • Repairs • Power Flushing

A. Sparkes Electrical Services

Serving Southam, Princethorpe,
Ryton on Dunsmore & all surrounding villages



Domestic electricians registered with STROMA and working to the latest 18th edition wiring and part P building regulations offering a full range of services from a simple fitting change, landlord, Periodic Inspection reports, consumer unit upgrades through to partial or full rewires. Notifiable work undertaken
No Job is too big or too small, Free estimates, competitive pricing and a friendly & reliable service



STROMA
CERTIFICATION
CERTIFIED INSTALLER

Call Adrian on 07950 679998 or

E: sparkeselectrical@gmail.com www.asparkeselectrical.co.uk

Unit 3 White House Farm, Oxford Road, Princethorpe, CV23 9QD



Simons Systems



Available for all your computer requirements including:
PC's & Laptops, New & used systems, Repairs & upgrades
Virus/Malware Removal, Data back & Windows re-installation
Upgrading memory/Hard drives/Rom drives/Graphics, etc
Internet - modems fitted, wireless, networking.

Any repairs or computer problems. **No call out charge**

T: 01926 316 119

E: sales@simons-systems.co.uk

M: 07751 811 097

W: www.simons-systems.co.uk



Vacancies at Ashorne Hill

Ashorne Hill is a residential Management Training and Conference Centre in the heart of Warwickshire.

Are you looking for a permanent job but are unable to work a full 40 hours per week? Ashorne Hill Management College are looking for flexible individuals to work in our housekeeping and catering departments, who are willing to work a minimum of 16 hours per week 5 days out of 7.

- Requires an outgoing personality and willingness to learn.
- Previous customer service experience would be an advantage.
- Excellent benefits and a rate of £8.33 per hour.
- Own transport would be needed due to location.

Please send CV to Sue.James@ashornehill.co.uk or contact her on 01926 488055.

We are always interested in recruiting local people. Please keep looking at our website for more opportunities within our organisation www.ashornehill.co.uk.



Ashorne Hill, Leamington Spa,
Warwickshire, CV33 9QW
01926 488000
www.ashornehill.co.uk

Eternal Flowers

YOUR LOCAL QUALIFIED FLORIST
CREATIONS FOR ALL OCCASIONS

Lindsey Robinson

Tel: 07521 455 879

Email: lindsey@eternal-flowers.com

www.eternal-flowers.com





LOCKE & ENGLAND

AUCTIONEERS & VALUERS

Auction Sales & Valuations

Valuation, collection & auction service of individual items through to complete property clearances.

Call for a free no obligation collection quote or email info@leauction.co.uk

SALE ENTRIES INVITED



12 Guy Street, Leamington Spa, CV32 4RT 01926 889 100 www.leauction.co.uk

Moving Home?

Need some extra space?

Safe, secure storage for domestic and commercial uses

**NO
MINIMUM
PERIOD**

**Flexible
storage option**

**Discounted
moving services**

Van rental

**Flexible
opening hours**

**Packing
materials ***

**Daily storage
rates**

*Free delivery to local area

SQUAB
GROUP

Harbury Lane, Leamington Spa CV33 9QB
t: 01926 882282 www.squab.co.uk





**Tired of Ironing,
Clothes Piling Up?
Then call in "The Iron Lady"
on 0780 859 4810**

I can offer either a Regular or One Off/Backlog service

Happy to collect/deliver

Cathy.ss10@live.co.uk



Wag About Town Pet Services

I provide a friendly, professional and reliable dog walking and pet care service in the South Leamington area. I can walk your dog, feed your cat and look after your small furry animals, all carried out in your home.

Please contact me if you would like to chat about your requirements.

Tracey - 07598 240703

wagabouttownpetservices.com
wagabouttown.petservices@gmail.com



£30 per lesson

www.csl drivingschool.co.uk

01926 831713

07594810822

p.hancock_adi@hotmail.co.uk

Local independent driving school run

by Peter Hancock





CONTACTS

For editorial issues contact Keith on: BTparishmagazine@hotmail.com

Copy deadline for the September 2020 issue is 19th August

For **adverts** please contact Pam on: btachbrookmagad@live.co.uk

To put **dates in the diary** please contact Marion on: marismi913@aol.com

For **distribution issues** contact Kate on: kate.wellsted@btconnect.com

Church Officers

Vicar: Rev Elaine Scrivens Tel: 426922 Church Warden: Rod Smith Tel: 612242

This is a non-profit magazine supported by personal donations and contributions from St Chad's Parish Church Council and Bishop's Tachbrook Parish Council. All adverts are printed in good faith. The Bishop's Tachbrook Parish Magazine cannot take any responsibility for the contents of the advert or the services provided by the advertiser.