

**1998 ANNUAL EXHIBITION**  
**Imperial College, London SW7—31 October 1998**

The following account of exhibits has been compiled by A. M. Jones (British butterflies), G. A. Collins (British Macrolepidoptera), R. J. Heckford & M. R. Wilson (British Microlepidoptera), N. M. Hall (Foreign Lepidoptera), P. J. Chandler (Diptera), P. J. Hodge (Coleoptera), A. J. A. Stewart (Hemiptera), A. J. Halstead (Hymenoptera and other orders), R. Dyke (Illustrations). The photographs for the two colour plates were taken by D. E. Wilson and the cost of printing these plates was met by a grant from the Hammond Memorial Fund.

BRITISH BUTTERFLIES

BAILEY, K. E. J.—Results of temperature experiments on larvae and freshly formed pupae. A series of *Vanessa atalanta* (L.) ab. *merrifeldi* Standfuss and a single extreme unnamed aberration, all from pupae chilled for 22–26 days; similar treatment with *Inachis io* (L.) has produced ab. *fischeri* Standfuss. *Cynthia cardui* (L.) with extended pale markings to the underside from pupae held at 37° for 3 days, and a series with strongly aberrant forewings and less aberrant hindwings (a reverse of the usual situation), believed to have been caused when fresh pupae were accidentally exposed to overheating in the sun and then chilled for 15–20 days. *Argynnis lathonia* (L.) with glomerate markings from late final instar larvae chilled for 2 days and the fresh pupae cold shocked. Also a series of extreme melanics (Plate 1, Fig. 11) from larvae reared slowly in cool conditions, then accelerated by warmth and the pupae given hot and cold shocks. This may help to explain the occasional clusters of *Argynnis* aberrations (especially in *A. paphia*) that can occur after a heatwave. Also shown from various cold shock regimes was a series of *Eurodryas aurinia* (Rott.) ab. *sebaldis* Schultz and a *Melitaea cinxia* (L.) similar to ab. *fulla* Quensel.

The results of breeding from a female *Aglais urticae* (L.) ab. *pseudocomnixa* Cabeau. Aberrations appeared in the F<sub>1</sub> generation and selected pairings gave stronger examples in the F<sub>2</sub> and a few obsolescent specimens. Some F<sub>2</sub> pupae were chilled for 20–28 days and resulted in *pseudocomnixa* with increased melanic tendencies. Amongst the F<sub>2</sub> was an extreme ground-colour aberration with pale forewings of a violet tint. The exhibitor believes that the frequency and depth of expression of *pseudocomnixa* in both generations indicate that it is due to a polygenic condition.

A female *Polygonia c-album* (L.) f. *hutchinsoni* Robson, taken out of season on 13.ix.1997 amongst many normal hibernating specimens. From eggs laid, 50+ type specimens were reared later the same year; the female did not die but entered hibernation on 25.x.1997 where she remained until 23.ii.1998. More eggs were laid and several adults reared. The exhibitor wonders if this is a bizarre response to global warming?

Also exhibited was a bred series of *Colias croceus* (Geoffroy) with reduced pale markings to the forewing borders in the F<sub>2</sub> from a Devon female taken vi.1998. Further examples of the recessive ab. *atratus* Bailey of *Eurodryas aurinia* (Rott.) and a male *Argynnis aglaja* (L.) ab. *post-fasciata* Blaichier, captured Devon vi.1998.

BARRINGTON, R. D. G.—Breeding experiments showing the multifactorial basis of three aberrations. *Maniola jurtina* (L.) ab. *fracta* Zweiglt, 2 females bred in an F<sub>2</sub> generation of 118 insects. The original female (Dorset, July 1995) was transitional to *fracta*. The F<sub>1</sub> of 80 produced a graded series from type to specimens with narrowed

hindwing median bands, but no *fracta*. The  $F_2$  was similarly graded but with some specimens transitional to and a small number of fully developed *fracta*. *Pyronia tithonus* (L.) ab. *multiocellata* Ober, a selection of specimens from the  $F_2$  of a *multiocellata* female from Devon, 1995. The  $F_1$  of 49 graded from type to weak *multiocellata*. The  $F_2$  of 90 was similarly graded but with more extreme *multiocellata*. Some females also showed ab. *lanceolata* Leeds on the underside hindwings. *Pieris napi thomsoni* (Warren) ab. *fasciata* Kautz bred in the  $F_2$ – $F_5$  generations from an original female transitional to *fasciata* captured in the outer Hebrides in 1997. Inbreeding produced stronger marked specimens with each generation. From the  $F_2$  onwards siblings showed a reluctance to pair and only one pairing was achieved each time to produce the  $F_3$ ,  $F_4$  and  $F_5$  generations.  $F_4$  females were easily paired with wild type Dorset males. This subspecies is generally single brooded; however it was possible to bring most of each brood through by rearing under constant light.

Other bred specimens included an extreme *Melanargia galathea* (L.) ab. *nigricans* Culot (Plate 1, Fig. 10) exhibited with two wild-caught females similar to the original parent. 50% of the brood were *nigricans*. *Celastrina argiolus* (L.) ab. *lilacina-lata* Tutt, with darker blue shading and heavy dark borders, one of only 6 butterflies to emerge from 120 wild larvae, the remainder being parasitised.

Wild-caught specimens included an extreme, and mint, male *Argynnis aglaja* (L.) ab. *winani* Holmgren (Plate 1, Fig. 12) captured in Ireland in 1998. The upperside largely black, the underside forewings rayed with black between the veins and the hindwings with the outer row of silver spots nearly obsolete, the median row almost black and the basal spots extended. This was spotted at about 6pm on a cool, breezy day as it was hawking up and down a bank looking for a place to roost for the night. Also from Ireland was a good series of *Polyommatus icarus mariscolore* (Kane), including a female ab. *post-obsolata* Gillmer and a male ab. *obsolata* Gillmer, being entirely devoid of underside spotting. Another important aberration was a male *Melanargia galathea* (L.) ab. *rubra* Mosley (Plate 1, Fig. 6), a rare albinistic form. A short series of *Maniola jurtina* (L.) from Dorset and Somerset in 1998, including 2 female ab. *postmultifidus* Lipscomb and ab. *fracta* Zweigl. A gynandromorph, left side female, right forewing male, right hindwing mixed. A curious female ab. *irregularia* Leeds, the right forewing larger than the left and with streaks and splashes of brown and grey-brown colouration on the underside, the apical spot being split and with a large pupilled spot below.

DENNIS, R. C.—A two-part exhibit, the first comprised of teratological specimens. Three *Lysandra coridon* (Poda) each with a reduced hindwing size. *Boloria selene* ([D & S.]) a male with both right-hand wings reduced in size by about a third. A female *Celastrina argiolus* (L.) with small hindwings. A *Maniola jurtina* (L.) with differing wing shapes and an apical spot missing. A *Cynthia cardui* (L.) with both left-hand wings about half the normal size and with aberrant venation and markings.

The second part comprised three good wild-caught *Aglais urticae* (L.), two ab. *semiichnusoides* Pronin from Sussex and an ab. *nigra* Tutt from Dorset.

FENSOME, B.—Various specimens bred and captured in 1998, including: *Anthocharis cardamines* (L.) 2 males with pale “orange tips” and a bred gynandromorph. *Pieris napi* (L.) 2 ab. *fasciata* Kautz and a dwarf female. *Pararge aegeria* (L.), a male lacking white spotting. *Coenonympha pamphilus* (L.), a pair of ab. *caeca* Ober, the female with unusual pale markings (Plate 1, Fig. 5). *Pyronia tithonus* (L.), 3 female ab. *anticrassipuncta* Leeds and a male ab. *obscurior* Schultz.

HARMER, A. S.—An interesting series of *Thymelicus acteon* (Rott.) ab. *alba* Bolton, or ab. nov?, comprised of 3 pairs caught in Dorset. Fresh specimens did not

accord with the descriptions of any known *acteon* aberrations; however one female kept for breeding in its worn state fits the description of ab. *alba* (no description exists for the male). It would seem highly likely that this series represents both male and female ab. *alba*. Further research is being undertaken.

*Polyommatus icarus* (Rott) ab. *radiata* Courv. a good pair, bred from the combined stock of R. C. Revels and the late L. D. Young. *Pararge aegeria* (L.) ab. *cockaynei* Goodson, bred ex Lymington female. The larvae kept indoors and given extended artificial daylight length.

Further results of breeding *Aphantopus hyperantus* (L.) ab. *lanceolata* Shipp showing F<sub>3</sub> specimens; these were not noticeably different to the F<sub>2</sub>, despite selective pairings. An extreme female was captured in the garden from stock released in 1997. Also exhibited were 2 females being combined ab. *lanceolata* and ab. *arete* Müller. In 1996 pairings were taken between male *lanceolata* and female *arete*, the F<sub>2</sub> comprised of 120 specimens, 84 type, 24 *arete*, 12 *lanceolata* and the two combined *arete/lanceolata* which were amongst the last to emerge.

HALL, P. R. & KEMP, R. J. — A female specimen of the lycaenid *Virachola antalus* (Hopffer). This was reared January 1998 from one of a dozen larvae found during November 1997 in peaches imported from Mpumalanga, South Africa, at the airfreight handling depot, Colnbrook, Bucks. For further information see Foreign Lepidoptera section.

JONES, A. M. — *Eurodryas aurinia* (Rott.), specimens bred in 1998 from stock maintained for the last 6 years. A male ab. *melanoleuca* Cabeau, and an extreme female ab. *sebaldis* Schultz bred under normal conditions. A bilateral gynandromorph (Plate 1, Fig. 8), bred 1.vi.1998.

*Quercusia quercus* (L.), 2 gynandrous specimens, a male with a patch of female purple on the left forewing, and a female with streaks of male on the right forewing and left hindwing. Both bred vi.1998. A male *Argynnis paphia* (L.) ab. *confluens* Spuler, captured 13.vii.1998.

MEREDITH, S. L. — Photographs of two aberrant *Polygonia c-album* (L.), both taken in the same Northants. woodland. The first with suffused hindwings seen on the 19.vii.1998, the second an extreme ab. *reichenstettensis* Fettig, seen on the 21.vii.1998; this specimen had a strongly aberrant underside, the "comma" forming a malformed "D".

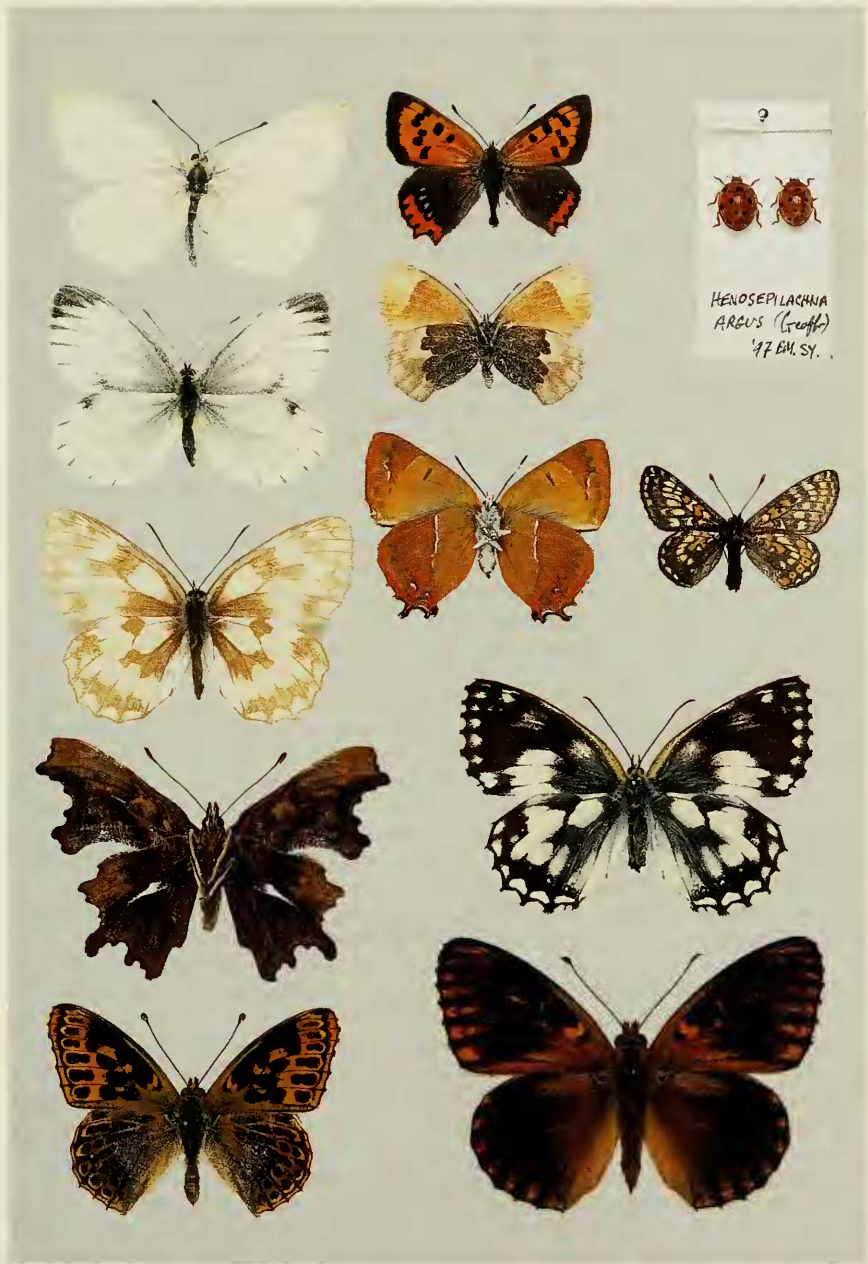
MCCORMICK, R. — A selection of butterflies taken at the Burren, Ireland between the 17 & 22.v.1998. *Erynnis tages baynesi* (Huggins), from Cappaghmore. *Leptidea sinapis juvernica* (Williams), from Loch Coolorta and Cappaghmore. *Anthocharis cardamines hibernica* (Williams), from Loch Coolorta. *Polyommatus icarus mariscolora* (Kane), a pair taken at Flaggy Shore.

PARKER, M. — A female *Lycaena phlaeas* (L.) ab. *cuprinus* Peyer. taken 30.viii.1998 in the Hurn Forest area, Dorset.

PLATE 1 ANNUAL EXHIBITION 1998

1	2	3
4	5	
6	7	8
9		10
11		12

1: *Pieris napi*, bred, F<sub>2</sub>, R. Revels. 2: *Lycaena phlaeas*, bilateral gynandromorph, bred, P. Tebbutt. 3: *Henosepilachna argus*, West Molesey, Surrey, 1997, I. S. Menzies. 4: *Pieris napi*, female, captured, D. Stokes. 5: *Coenonympha pamphilus* ab. *caeca*, captured, B. Fensome. 6: *Melanargia galathea* ab. *rubra*, captured 1998, R. D. G. Barrington. 7: *Thecla betulae* ab. *unistrigata*, bred, P. Tebbutt. 8: *Eurodryas aurinia*, bilateral gynandromorph, bred F6A. M. Jones. 9: *Polygonia c-album*, underside, temp. experiment. D. Stokes. 10: *Argynnis aglaja* ab. *wimani*, captured, Ireland, 1998, R. D. G. Barrington. 11: *Argynnis lathonia*, extreme melanic, temp. experiment, K. E. J. Bailey. 12: *Melanargia alathea* ab. *nigricans*, bred, R. D. G. Barrington.



REVELS, R. C.—Continuing results of breeding *Aphantopus hyperantus* (L.) ab. *lanceolata* Shipp (originally from A. S. Harmer). About 15% of specimens bred showed an increased expression of the *lanceolata* characteristics, being more extreme than any others known to the exhibitor (this shows different results to those of A.S.H.).

Two examples of *Pieris napi* (L.) bred in an F<sub>2</sub> from a heavily marked female, taken 1997, showing a tendency towards albinism (Plate 1, Fig. 1). Further breeding is planned for 1999. A series of *Colias croceus* (Geoffroy) f. *helice* Hübner, showing a range of colours from normal yellow to pale yellow and white. These originated from a Beds. female taken in June 1998; the F<sub>1</sub> produced 50% *helice* in August.

Results of breeding *Melanargia galathea* (L.) ab. *craskei* Tubbs. A previously exhibited breeding experiment dating from 1974–79 and important in showing that *craskei* is caused by a dominant gene.

ROUSE, T.—A specimen of *Danaus chrysippus* (L.) taken in the exhibitor's garden at Densole, Kent on 16.viii.1998 and probably an escape. *Boloria euphrosyne* (L.) ab. *pittionii* Nitsche., a male taken in Kent 1997 and a less extreme specimen bred from a larva found at the same locality, emerging 14.v.1998. An *Argynnis lathonia* (L.), with heavy black upperside spotting, bred in an F<sub>2</sub> generation from a female taken in Southern France.

SOFTLY, R. A.—A specimen of *Greta morgane oto* (Hewitson), taken at Hill Garden, Hampstead Heath, by the gardener Mr Les Willis. This species is a resident of Central and South America, and is commonly bred in butterfly houses in this country; it is likely that it is an escapee. The specimen was identified by G. Beccaloni and W. J. Reynolds of the Natural History Museum.

STOKES, D.—An interesting selection of *Polygonia c-album* (L.) undersides, some with long white "comets" replacing the usual "comma" (Plate 1, Fig. 9); these had less extreme upperside markings than those that had retained the "comma", bred from heat shocked pupae. A pair of *Thecla betulae* (L.) from cold shocks, with reduced hair lines on the undersides. *Quercusia quercus* (L.), showing dark "striata" marks moving in towards the discoidal spots from the submarginal band, bred ex ova. A captured second brood female *Pieris napi* (L.) with the twin forewing spots missing (Plate 1, Fig. 4).

TEBBUTT, P.—Heat shocks on freshly formed pupae resulted in various named melanics. *Inachis io* (L.) ab. *prochnovi* Pronin., ab. *antigone* Fischer, ab. *exoculata* Weymer, and ab. *belisaria* Oberthur. *Polygonia c-album* (L.) ab. *obscura* Closs., ab. *suffusa* Frohawk and 2 ab. *reichenstettensis* Fettig. *Vanessa atalanta* (L.) specimens transitional to ab. *klemensiewiczzi* Schille. The highlight of wild-caught and naturally bred specimens was a bilateral gynandromorph of *Lycaena phlaeas* (L.) (Plate 1, Fig. 2), also an *Aphantopus hyperantus* (L.) with the right-hand hindwing underside predominantly black with yellow lines. A bred female *Thecla betulae* (L.) ab. *unistrigata* Schultz (Plate 1, Fig. 7), from wild ova.

Also exhibited were two all-blue *Plebejus argus caernensis* (Thompson) ab. *splendida* Thompson from North Wales. A short series of *Coenonympha tullia polydama* (Haworth) and *davus* (Fabr.) from Lake District sites showing a wide range of variation. Selected aberrations of *Pararge aegeria* (L.) bred from hibernating pupae brought indoors in December and emerging over a 3 month period, including ab. *parviocellata* Lempke, ab. *saturationis* Crumbrugge, and ab. *cockaynei* Goodson.

YOUNG, D.—*Colias croceus* (Geoffroy) from Berkshire, bred from a strong colony found in a large field of lucerne in 1996. *Coenonympha tullia scotica* (Staudinger) and *Erebia epiphron scotica* (Cooke) from Ben Lawers, and Trinafore, Perthshire, vii.1998.

## BRITISH MACROLEPIDOPTERA

BAKER, B. R.—Lepidoptera recorded from a coastal marsh near Dunster, S. Som., including *Nonagrja typhae* (Thunb.), *Archanara geminipuncta* (Haw.) and *A. sparganii* (Esp.); the latter species new to VC5. Aberrations from 1998 and earlier years: *Electrophaes corylata* (Thunb.), Exmoor, 1989; *Pseudopanthera macularia* (L.), Co. Clare, 1977; *Bupalus piniaria* (L.), Caversham, Berks., 1995; *Acronicta leporina* (L.), Exmoor, 1995; *Hada plebeja* (L.), Caversham, Berks., 1998; *Charanyca trigrammica* (Hufn.), Hartslock, 1998.

BAKER, P. J.—Aberrations and migrants taken in Devon including: *Eublennum parva* (Hb.), West Hill, S. Devon, 8.vii.1998.

BARNETT, R. & EVANS, M.—On behalf of the Bristol and district moth group: *Mythimna pudorina* ([D. & S.]), Max Bog, N. Som., 2.vi.1995; *Idaea dilutaria* (Hb.), Avon Gorge, N. Som. and W. Glos., 1994.

BROTHERIDGE, D.—Migrants taken in 1998, dates and localities not given: *Rhodometra sacraria* (L.) and *Mythimna albipuncta* ([D. & S.]).

BUTCHER, A. G. J.—*Synanthedon vespiformis* (L.), Sidney Wood, Surrey, 20.vi.1998, at mvl; *Synanthedon culiciformis* (L.) and ab. *flavocingulata* Spuler, reared from birch, Challock, E. Kent, iv.1998; *Discoloxia blomeri* (Curt.), typical and melanic, Tintern, Mon., 19.vi.1995 (Plate 2, Fig. 9). From Isle of Grain, W. Kent: *Chortodes elymi* (Treits.), 10.viii.1998; *Luperina nickerlii demuthi* Goater & Skinner, 1998.

CLANCY, S.—Lepidoptera from the Dungeness, Kent, area: *Aplasta ononaria* (Fuess.), New Romney, 20.vi.1998; *Cleorodes lichenaria* (Hufn.), Dungeness, 26.vii.1998; *Selenia lunularia* (Hb.), New Romney, 24.vii.1992, and Greatstone, 10.viii.1998, second brood examples of migrant status; *Lymantria dispar* (L.), Dungeness, 20.vii.1998; *Nola aerugula* (Hb.), New Romney, 20.vi. and 22.vii.1998; *Agrotis crassa* (Hb.), Dungeness, 13.viii.1998—new to Kent; *Deltote bankiana* (Fab.), Greatstone, 20.vi.1998. *Hecatera dysodea* ([D. & S.]), reared from larvae found at Gravesend, W. Kent, 31.vii.1998. Aberrations: *Orthonama obstipata* (Fab.), a male lacking forewing band, Greatstone, 10.viii.1998; *Cyclophora linearia* (Hb.), banded female, near Gloucester, 15.vii.1998 (R. Thomas); *Arctia villica britannica* (Ob.), Dungeness, 28.v.1998 (Plate 2, Fig. 7); *Mythimna unipuncta* (Haw.), melanic, Lizard, W. Corn., 24.iii.1998 (M. Tunmore).

CLARKE, J.—Lepidoptera taken or reared in 1998, including: *Conistra rubiginea* ([D. & S.]), St. Briavels, W. Glos., 1.iv.1998; *Eublennum ostrina* (Hb.) ab. *carthami*, reared from larva, Slapton Ley, S. Devon, 22.viii.1998; *Axyليا putris* (L.), albinistic form, Bodmin Moor, E. Corn.; *Diaphora mendica* (Cl.), cross between f. *rustica* Hb. and typical English form.

COOK, R. R.—Lepidoptera caught or reared in 1998: *Pelosia obtusa* (H.-S.), Cromes Broad, E. Norf., 19 and 20.vii.1998; *Sedina buetneri* (Hering), Dorset, 28.ix.1998; *Orgyia recens* (Hb.), reared from larvae from Blaxton, Yorks, 24.v.1998; *Chortodes elymi* (Treits.), Caister Dunes, E. Norf., 18 and 22.vii.1998; *Lygephila cracca* ([D. & S.]), reared from larvae from Hartland Point, N. Devon, 17.vi.1998. *Ematurga atomaria* (L.) ab. *unicoloraria* Stdgr., Seckar Wood, Yorks., 23.v.1998 (Plate 2, Fig. 8).

DAWSON, J.—Moths from Cambridgeshire, dates and localities mostly not given: *Phibalapteryx virgata* (Hufn.) and *Eupithecia pimpinellata* (Hb.), south Cambs. chalk area; *Xestia rhomboidea* (Esp.), throughout; *Cryphia muralis* (Forst.) f. *impar* (Warren), Cambridge; *Lithostege griseata* ([D. & S.]), Fulbourn, Cambs., 26.v.1997; *Idaea rusticata atosignaria* Lempke; *Scopula marginipunctata*

(Goeze); *Spaelotis ravida* ([D. & S.]), 9.viii.1997; *Polymixis lichenea* (Hb.), 6.x.1998.

DOBSON, A. H. — *Orthonama obstipata* (Fab.), Bramley Frith Wood, Hants, 13.x.1998; *Macdunnoughia confusa* (Steph.), Greywell, N. Hants, 2.x.1998 — new to VC12; *Cerastis leucographa* ([D. & S.]), Bramley Frith Wood, Hants, n.d.; *Thera cupressata* (Geyer), Hants, reared from larva beaten 17.iv.1998; *Agrochola haematidea* (Dup.), eastern New Forest, 10.x.1998. From Minsmere, E. Suffolk (B.E.N.H.S. field meeting), 1.viii.1998: *Apamea oblonga* (Haw.); *Celaena leucostigma* (Hb.) ab. *fibrosa* Hb.

GILL, N. — Moths taken in 1998: *Pelosia obtusa* (H.-S.), Norfolk Broads, 20.vii.1998; *Sedina buettneri* (Hering), Dorset, 25.ix.1998; *Hecatera dysodea* ([D. & S.]), W. Kent, larvae viii.1998.

HALL, N. M. — *Rhodometra sacraria* (L.), Earley, Berks., 6.ix.1998; *Orthonama obstipata* (Fab.), Avon Valley, Salisbury, S. Wilts., 27.vii.1998; *Mythimna albipuncta* ([D. & S.]), Hastings Country Park, E. Sussex, 29.viii.1998; *Abraxas sylvata* (Scop.), Hastings Country Park, E. Sussex, 29.viii.1998; *Idaea rusticata atrosignaria* Lempke, Hastings Country Park, E. Sussex, 9.viii.1998; *Mythimna albipuncta* ([D. & S.]), Rye Harbour, E. Sussex, 31.viii.1998.

HALSEY, J. — *Autographa gamma* (L.), four examples from a migration in v.1998 showing unusual Y markings.

HALSTEAD, A. J. — Larvae of *Cossus cossus* (L.) from Wisley Gardens, Surrey, ix.1998. Those exhibited had been found in a planted birch, and were very likely to have been imported, possibly from Germany. Two full grown larvae were also found which had emerged from an oak and were considered native — the first Wisley records for at least 26 years.

HARMAN, T. W. — *Hyles livornica* (Esp.), Herne Bay, E. Kent, 20.ii.1998 (B. Matlock).

HART, C. — *Thysanoplusia orichalcea* (Fab.), Lizard, Corn., late ix.1998; *Archana ara sparganii* (Esp.), Buckland, Surrey, 9.ix.1998.

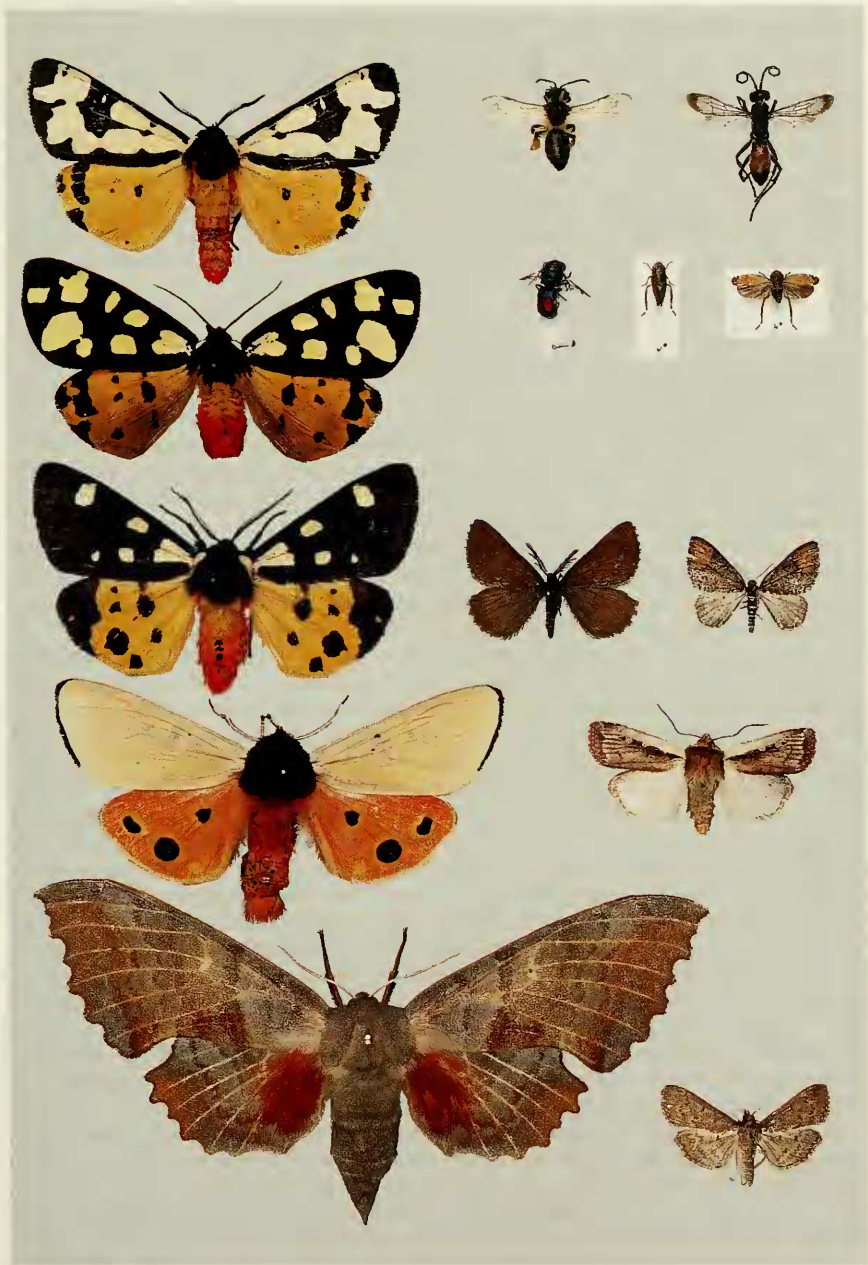
HARVEY, M. — *Entephria flavicinctata* (Hb.), Snowdon, Caer., 18.ix.1998 (det. M. R. Honey) — possibly first confirmed record from Wales; *Archanara geminipuncta* (Haw.), Maidenhead, Berks., viii.1998 (D. White); *Idaea straminata* (Borkh.), Upper Basildon, Berks., 30.vi.1998; *Cyclophora porata* (L.), Windsor Forest, Berks., 14.viii.1998.

HAYWARD, R. — Lepidoptera taken in 1998 including: *Rhodometra sacraria* (L.), Slough, Bucks., 4.ix.1998; *Orthonama obstipata* (Fab.), Slough, Bucks., 14 and 20.viii.1998; *Meganola albula* ([D. & S.]), Slough, Bucks., 20.vii.1998; *Hypena rostralis* (L.), Slough, Bucks., 6.vi.1998. Aberrations including: *Arctia villica britannica* (Ob.), reared from Kent larva (Plate 2, Fig. 4).

PLATE 2 ANNUAL EXHIBITION 1998

1	2	3
4	5	6
7	8	9
10		11
12		13

1: *Arctia villica britannica*, Folkestone Warren, E. Kent, 23.v.1998, T. Rouse. 2: *Andrena ferox*, Brockenhurst, Hants, 7.v.1998, G. A. Collins. 3: *Cryptocheilus notatus*, Bagmoor Common, Surrey, 19.vii.1998, G. A. Collins. 4: *Arctia villica britannica*, Kent, R. Hayward. 5: *Chrysis fulgida*, Bagmoor Common, Surrey, 19.vi.1998, R. D. Hawkins. 6: *Fieberiella* sp. (2 specimens), Park Royal, Middx, 16.ix.1998, P. J. Hodge. 7: *Arctia villica britannica*, Dungeness, 28.v.1998, S. Clancy. 8: *Ematurga atomaria* ab. *unicoloraria*, Seckar Wood, Yorks, 23.v.1998, R. Cook. 9: *Discoloxia blomeri*, melanic form, Tintern, Mon, 19.vi.1995, A. G. J. Butcher. 10: *Arctia caja* ab., Kennack Sands, W. Cornwall, 1.viii.1998, B. Henwood. 11: *Ochropleura plectra*, J. Owen. 12: *Laothoe populi*, Thorpeness, E. Suffolk, A. Jenkins. 13: *Herpetogramma licarsosalis*, Algarve, Portugal, 1.x.1998, M. F. V. Corley.





HENWOOD, B. — *Spodoptera exigua* (Hb.), Abbotskerswell, S. Devon, 2.x.1998. An aberration of *Arctia caja* (L.), Kennack Sands, W. Corn., 1.viii.1998 (Plate 2, Fig. 10).

JENKINS, A. — Moths taken in 1998 including: *Lygephila cracca* ([D. & S.]), at mvl, N. Devon; *Crocallis elinguaris* (L.), Thorpeness, E. Suff., an aberration superficially resembling *Crocallis dardoinaria* Donz. (Skinner, 1998, plate 43); *Bembecia muscaeformis* (Esp.), reared from pupa, S. Devon; *Diaphora mendica* (Cl.) f. *rustica* Hb., *Hadena caesia mananii* (Gregs.), *Triphosa dubitata* (L.), *Calamia tridens occidentalis* Cock., *Hadena perplexa capsophila* (Dup.), *Odontognophos dumetata hibernica* Forder, all from the Burren, Co. Clare; *Hecatera dysodea* ([D. & S.]), reared from larvae from north Kent; *Sedina buettneri* (Hering), flying at dusk, Dorset; *Laothoe populi* (L.), orange aberration, Thorpeness, E. Suff. (Plate 2, Fig. 12).

KNILL-JONES, S. A. — Lepidoptera from Freshwater, I.o.W. including: *Eupithecia satyrata* (Hb.), 5.vi.1998 — new to VC10; *Oligia versicolor* (Borkh.), 1 and 6.vii.1997 — new to VC10; *Thaumetopoea processionea* (L.), 1 and 6.ix.1998 — new to VC10; *Thera cupressata* (Geyer), four in x.1998; *Orthonama obstipata* (Fab.), 14.v. and 19.vi.1998; *Rhodometra sacraria* (L.), 20.vii.1998; *Agrius convolvuli* (L.), 3.x.1998; *Catocala fraxini* (L.), 4.x.1998; *Heliothis peltigera* ([D. & S.]), 23.vi.1998; *Mythimna vitellina* (Hb.), 8.ix.1998; *Mythimna unipuncta* (Haw.), 20.ix.1998; *Helicoverpa armigera* (Hb.), five from 26–28.ix.1998; *Spodoptera exigua* (Hb.), 9.v.1998; *Idaea sylvestraria* (Hb.), 9.vii.1998.

MCCORMICK, R. F. — *Hecatera dysodea* ([D. & S.]), W. Kent, 1998, voucher specimens of the adult and photographs of the larvae. Moths from the Burren, Co. Clare, in May 1998, including: *Hadena caesia mananii* (Gregs.); *Hadena perplexa capsophila* (Dup.); *Diaphora mendica* (Cl.) f. *rustica* Hb.; *Hemaris tityus* (L.); *Odontognophos dumetata hibernica* Forder; *Chiasmia clathrata hugginsi* (Baynes); *Eupithecia vulgata clarensis* Huggins; *Eupithecia venosata plumbea* Huggins; and *Lithosia quadra* (L.), reared from larvae, Loch Coolorta. Moths recorded by the Devon moth group in 1998, including: *Idaea sylvestraria* (Hb.), Colaton Raleigh Common, S. Devon, 20.vi.1998; *Discoloxia blomeri* (Curt.), Ashcombe, S. Devon, 9.viii.1998, Rousden, S. Devon, 2.vii.1998, and Lyd Valley, 18.vii.1998; *Abraxas sylvata* (Scop.), Lyd Valley, 18.vii.1998; *Acherontia atropos* (L.), in a bee hive, 12.vii.1998; *Standfussiana lucerneae* (L.), Hartland Point, N. Devon, 25.vii. and 5.viii.1998; *Aporophyla lutulenta* ([D. & S.]), Exeter, S. Devon, x.1998; *Conistra rubiginea* ([D. & S.]), Stover Park, S. Devon, 31.iii.1998; *Moma alpium* (Osbeck), Great Torrington, N. Devon, 4.vii.1998; *Amphipyra berbera svenssoni* Fletcher, Stoke Woods, S. Devon, 29.viii.1998; *Amphipoea lucens* (Freyer), Dartmoor (det. B. Henwood); *Eublemma parva* (Hb.), Lyd Valley, 20.vi.1998, and Teignmouth, S. Devon, 20.vii.1998; *Thysanophusia orichalcea* (Fab.), Bere Alston, S. Devon, 24.ix.1998 (R. Bogue); *Macdunnoughia confusa* (Steph.), Prawle Point, S. Devon, 28.ix.1998, *Acontia lucida* (Hufn.), Thorverton, S. Devon, 10.vii.1998 — probably imported with plants from Cyprus; *Lygephila cracca* ([D. & S.]), Hartland Point, N. Devon, 25.vii. and 5.viii.1998.

NASH, S. — Migrant moths from Fernham, Berks: *Catocala fraxini* (L.), 26.ix.1998; *Agrius convolvuli* (L.), two, 30.ix.1998; *Helicoverpa armigera* (Hb.), two, 27.ix.1998; *Mythimna vitellina* (Hb.), 27.ix.1998; *Rhodometra sacraria* (L.), ten between 30.viii. and 25.ix.1998; *Orthonama obstipata* (Fab.), 31.viii.1998; and from Durlston Head, Dorset: *Agrius convolvuli* (L.), five, 18–24.ix.1998; *Helicoverpa armigera* (Hb.), 24.ix.1998; *Mythimna albipuncta* ([D. & S.]), 22.viii.1998; *Mythimna vitellina* (Hb.), four, 26.ix.1998. *Helicoverpa armigera* (Hb.), reared from a larva

found in a supermarket. Melanic forms of: *Cryphia domestica* (Hufn.) and *Acrionicta megacephala* ([D. & S.]), Swindon, N. Wilts.; *Idea aversata* (L.), Durlston Head, Dorset, and extreme aberrations of *Xanthorhoe fluctuata* (L.), Swindon, N. Wilts., all n.d.

NATURAL HISTORY MUSEUM—Some extreme varieties from the National Collection (R.C.K.): *Tethea or* ([D. & S.]), ab. *albingensis* Warnecke, Sunderland, 1913, and ab. *permarginata* Hasebroek, Bromley, 1930; *Archicaris parthenias* (L.), ab. *luteata* de Hennin, Chingford, and ab. *obscura* Prout, north Kent, 1908; *Cyclophora annularia* (Fab.), ab. *obsoleta* Ridg., Honiton, 1899, and ab. *sertaria* Dannehl, Dover, 1877; *Lampropteryx suffumata* ([D. & S.]), ab. *porrittii* Robson & Gardner, Dover, 1896, and ab. *piceata* Steph., Barnard Castle, 1917; *Chiasmia clathrata* (L.), ab. *obsoletissima* Cock., Gibraltar Point, 1971, and ab. *fasciata* Prout, Hazeleigh, 1902; *Cepphis adenaria* (Hb.), ab. *fulva* Gillmer, east Surrey, 1928; *Pseudopanthera macularia* (L.), ab. *quadrimaculata*, Highgate, ab. *fuscaria* Stdgr., Abbots Wood, 1886, and an asymmetrical aberration, West Wickham Wood, 1877; *Ematurga atomaria* (L.), ab. *praeclara* Cock., Lancing, Sussex, 1939, ab. *unicoloraria* Stdgr., Burnley, Lancs., 1914, and ab. *dentaria* Stauder, east Kent, 1920; *Gnophos obscurata* ([D. & S.]), ab. *bicinctata* Fuchs, Lewes, 1909, ab. *obscuriata* Prout, New Forest, 1900, ab. *argillacearia* Stdgr., Babbacombe, S. Devon, 1903, ab. *fasciata* Prout, Folkestone, 1921; ab. *saturata* Prout, New Forest, 1899; and ab. *calceata* Stdgr., Lewes, 1921; *Clostera curtula* (L.), ab. *webbiana* Rebel, nr. Faversham; *Lymantria monacha* (L.), approaching ab. *atra* Linstow, New Forest, 1903 (possibly cross-bred); *Xestia c-nigrum* (L.), ab. *albinotica* Cock., Harpenden, Herts., 1950, and an asymmetrical aberration, Rye, Sussex, 1954; *Dichonia aprilina* (L.), ab. *semivirgata* Cock., Elgin, 1895, and ab. *brunneomixta* Culot, Yorkshire, 1917; *Conistra rubiginea* ([D. & S.]), ab. *modestissima* Ob., Camberley, 1899; *Polychrysis moneta* (Fab.), ab. *maculata* Lempke, Boxmoor, 1912; *Catocala nupta* (L.), ab. *brunnescens* Warren, Mitcham, 1892.

OWEN, J.—Lepidoptera from Dymchurch, E. Kent: *Scopula nigropunctata* (Hufn.), 12.viii.1996, 9.viii.1997, and 23.vi.1998; *Apanea ophiogramma* (Esp.), melanics, 27.vi. and 14.vii.1998; *Conistra erythrocephala* ([D. & S.]), 30.iii.1998; *Hydraecia osseola hucherardi* Mab., 11.ix.1998—first here since 1974; *Cleorodes lichenaria* (Hufn.), 5.vi.1998; *Hypena crassalis* (Fab.), 9.vii.1998; *Notodonta tritophus* ([D. & S.]), 23.vii.1998. *Ochropleura plectra* L., 17.v.1998, unusual form (Plate 2, Fig. 11).

PARSONS, M. S.—*Heterogenea asella* ([D. & S.]), Raynes Park, Surrey, 7.viii.1998—only Surrey record this century; *Parascotia fuliginaria* (L.), Raynes Park, Surrey 20.vii.1998; *Hecatera dysodea* ([D. & S.]), Gravesend, W. Kent, 15.vii.1998, and Swanscombe, W. Kent, 18.vii.1998; *Hypena obsitalis* (Hb.), Atherington, W. Sussex, 6.xi.1997—new to VC13. Also from Westcott Downs, Surrey: *Catarhoe rubidata* ([D. & S.]), 20.vi.1998; *Setina irrorella* (L.), 20.vi.1998; *Xestia rhomboidea* (Esp.), 7.viii.1998.

PLANT, C. W.—An exhibit of *Abrostola* spp. Four species occur in Europe: *A. tripartita* (Hufn.), *A. triplasia* (L.), *A. asclepiadis* ([D. & S.]), and *A. agnorista* Dufay; of which examples of the first three were shown. It was suggested that either of the latter two might occur in Britain, examination of the male genitalia being the most reliable method of certain identification. Moths captured in 1998: *Alcis repandata* (L.) ab. *conversaria* Hb., Froxen Copse, Arne, Dorset, 7 & 28.vi.1998; *Xylena vetusta* (Hb.), Stanmore Common, Middx., 16.x.1998, captured by J. Hollingdale—the first VC21 record since 1880; *Euphyia biangulata* (Haw.), M.o.D. training area, Kirk., 5.vii.1998—new to Scotland. *Hecatera dysodea* ([D. & S.]), examples from Kent, Spain, and France.

ROUSE, T. — Migrant moths: *Helicoverpa armigera* (Hb.), one of ten, Portland, Dorset, 27.ix.1998; *Heliothis peltigera* ([D. & S.]), Folkestone, E. Kent, 29.viii.1998; *Mythimna albipuncta* ([D. & S.]), one of 28 taken in Kent between 13.v. and 10.x.1998; *Rhodometra sacraria* (L.), Densole, E. Kent, 1.ix.1998; *Hyles gallii* (Rott.), Sandwich Bay, E. Kent, 26.viii.1998 (R.A.B. Morton); *Spodoptera exigua* (Hb.), Torquay, S. Devon, 11.viii.1998. Aberrations: *Arctia villica britannica* (Ob.), Folkestone Warren, E. Kent, 23.v.1998 (Plate 2, Fig. 1); *Aporophyla lutulenta* ([D. & S.]) ab. *sedii* Guen., Folkestone Warren, E. Kent, 15.x.1998; *Synanthedon culiciformis* (L.) ab. *flavocingulata* Spuler, reared from larva, Orlestone Forest, E. Kent, ii.1998. Other Kentish moths: *Rheumaptera cervinalis* (Scop.), Densole, E. Kent, 19.viii.1998; *Hadena albimacula* (Borkh.), Folkestone Warren, E. Kent, 25.ix.1998; *Hecatera dysodea* ([D. & S.]), Gravesend, W. Kent, adult netted at dusk, 16.vii.1998, and examples reared from ova found 26.vii.1998.

SMITH, I. F. — A photograph of *Eilema complana* (L.) from Ravenshall, Kirk., 4.viii.1997, accompanied by a set specimen.

WARING, P. — An exhibit of ear moths, *Amphipoca* spp., comprising the four British species with notes on distribution and distinguishing features. Dissection of the genitalia is necessary for accurate identification.

WARNE, B. J. — Moths from the Isle of Wight including: *Mythimna l-album* (L.), Binstead, 4.vii.1998; *Cepphis advenaria* (Hb.), 14.v.1998, "woodland"; *Meganola alba* ([D. & S.]), 5.vii.1998; *Elaphria venustula* (Hb.), 19.vi.1998; *Hadena compta* ([D. & S.]), 25.vi.1998 — new to VC10.

WEDD, D. J. — Specimens taken or reared in England, Scotland, Ireland & Wales, 1997–1998: (i) *Cyclophora albipunctata* Hufn. A series of the large Scottish form from Loch Rannoch. (ii) *Enargia paleacea* Esp. A typical male and a short series from a crippled female found on a tree near Kincaig. (iii) *Eriopygodes imbecilla* F. Size reduction after 6 generations bred from a Monmouthshire female. (iv) *Odontoglyphos dumetata hibernica* Forder. A typical pair and a fourth generation bred from a very small Burren female. (v) *Diaphora mendica* Cl. f. *rustica* from the Burren, darkening after six generations in captivity, compared with two intermediate males from Rosslare. (vi) *Furcula bicuspis* Borkh. Two specimens bred from a new (private) Buckinghamshire locality. (vii) *Noctua comes* Hb. A bred series from the Findhorn, Morayshire, showing something of the colour-range in this species over two generations. The original parents (found in cop.) were male blackish, female reddish.

YOUNG, D. — Moths caught or reared in 1998: *Semiaspilates ochrearia* (Rossi), Greenham Common, Berks.; *Miltochrista miniata* (Forst.) ab. *flava* Bigneau, Orlestone Forest, E. Kent, 17.vii.1998; *Rheumaptera hastata nigrescens* (Prout), Trinafour, Mid-Perth; *Noctua orbona* (Hufn.), reared from larvae, Icklingham, W. Suff.; *Xanthia gilvago* ([D. & S.]), reared from larvae, Charing, E. Kent, and an adult taken at Dungeness, E. Kent, 27.ix.1998; *Catocala sponsa* (L.), found resting on the ground amongst dead leaves.

#### BRITISH MICROLEPIDOPTERA

[Nomenclature and classification follows the checklist of Bradley 1998]

BARNETT, R. & EVANS, M. — An exhibit on behalf of the Bristol & District Moth Group. *Calamatropha paludella* (Hübner), Keynsham, Bristol, ST6569, A. Bone, vii.1996. *Salebriopsis albicilla* (H.-S.), Leigh Woods, Bristol, ST5573, M. Evans/E. Dean, 28.vi.1995, confirms the presence of the species at this locality, reported in 1969. *Pediasia aridella* (Thunb.), Gordano Valley NNR, North

Somerset, ST436729, M. Evans/E. Dean, 12.vii.1995. *Hellula undalis* (Fab.), Whitechurch, Bristol, ST67, R. Andrews, 13.x.1995. *Blastobasis decolorella* (Woll.) Whitechurch, Bristol, ST67, R. Andrews 1995. *Commophila aeneana* (Hübner) Bristol, ST613704, M. Evans, 26.v.1998. *Morophaga choragella* (D. & S.), Leigh Woods, ST5573, R. Barnett/A. Pym, 26.vii.1996. *Ancylois obtitella* (Zell.), Slimbridge, SO7204, N. Woodward, 24.v.1995.

BLAND, K. P.—*Psychoides filicivora* (Mey.) Reared from *Phyllitis scolopendrium* on wall in Stockbridge, Edinburgh (NT2474; VC83). Collected on 15.viii.1998, emerged 27.ix.1998. New to Scotland. *Ochsenheineria taurella* (D. & S.) taken at Flanders Moss, Perthshire (NS6397; VC87) on 1.viii.1998. First confirmed Scottish record. *Coleophora trochilella* (Dup.) reared from cases on *Achillea millefolium* collected at Kincaig Point, Fife (NT4699; VC85) on 28.iii.1998. Imagines emerged 6–28.vi.1998. New to VC85 and third Scottish site. *Mompha ochraceella* (Curt.) appears to be becoming more common in S. E. Scotland. Two taken at light this year at Blackford, Edinburgh (NT2571; VC83); one on 9/10.viii.1998 and the other on 6/7.ix.1998.

BRITTON, M. R.—*Phyllonorycter leucographella* (Zell.), mines found in several localities in York and in Leeds and appearing to be more prevalent on sheltered bushes; *Cacoecimorpha pronubana* (Hübner), several males seen in September 1998 in York, a female caught Haworth, York, 24.ix.1998 and males seen several days later. *Cataplectica profugella* (Staint.), bred from larvae found on 14.viii.1997, emerging 11.vi.1998. Larva was pale ground colour with reddish-brown markings and louse-shaped. It was found while searching for *Eupithecia pimpinellata* (Hübner) larvae on burnet saxifrage near Askham Bog, York.

BROTHERIDGE, D.—Five species from Wiltshire: *Coleophora trigeminella* Fuchs; *C. salicorniae* Wocke; *Dasystoma saliciella* (Hübner); *Isophrictis striatella* (D. & S.); *Euleioptilus carphodactyla* (Hübner).

CLANCY, S. P.—*Psammotis pulveralis* (Hübner) from the Dungeness area of Kent, 4 examples (out of 6 taken) 19.vii–20.vii.1998; *Sciota hostilis* (Steph.), female, New Romney, 21.vi.1998, the second migrant example of the species in the area; *Euzophera cinerosella* (Zell.), male at light, Lydd, 6.vi.1998; *Euchromius ocella* (Haw.), Rye Harbour, East Sussex, P. Philpott, 24.ii.1998; *Phlyctaenia stachydalis* (Germ.), Rye Harbour, East Sussex, P. Philpott, 30.vi.1998.

DAWSON, J.—a series of species local to the south Cambridgeshire (VC29) chalk area; *Phlyctaenia perhucidalis* (Hübner) and *Nascia ciliialis* (Hübner) from the spring-fed fens within the chalk area. Also exhibited an unusual species to the county, *Platytes alpinella* (Hübner) on 10.viii.1998.

DOBSON, A. H.—*Phyllonorycter leucographella* (Zell.): specimens bred from mines collected from *Pyracantha* in the Brighton Hill district of Basingstoke (VC12) on 17.i.1998. New county record for Hampshire.

GILL, N.—A selection of plume moths taken or bred during 1997/98. *Stenoptilia zophodactylus* (Dup.) Allerthorpe Common, Yorks. (first Yorks. record since 1948); *Merrifieldia leucodactyla* (D. & S.), Wharram, Yorks., 19.vii.1997 (new to VC61); *Marasmarcha lunaedactyla* (Haw.), Wharram, Yorks., 19.vii.1997; *Stenoptilia millieridactyla* (Bruand), now widespread in gardens in many parts of Yorks.; *Hellinsia chrysocoma* (Rag.) bred from Thornden Wood, Kent.

HALL, N.M.—An unidentified scythridid taken by day at Greenham Common, Berks, 27.vi.1998. *Pediasia contaminella* (Hübner), Hastings Country Park, East Sussex, 9.viii.1998.

HART, C.—*Stenoptilia islandicus* (Staud.) reared from mossy saxifrage (*Saxifraga hypnoides*) collected in Ben Lawers area. The foodplants of *S. islandicus* in Iceland

and Scandinavia are considered to be *Saxifraga cespitosa* and *S. adscendens*. However, only *S. cespitosa* occurs in Britain and does not appear to occur in the Ben Lawers area where the moth is found. Three days of searching, together with Bernard Skinner, resulted in a single pupa attached to the tip of mossy saxifrage at about 800 m. The surrounding plant was damaged to the extent that the terminal buds of surrounding shoots had been eaten out, which is typical of the feeding pattern of this larva. A small very pale, female specimen emerged.

HARVEY, M. C.—*Eudonia delumella* (Staint.) m.v., Lord's Mead, Lower Kingcombe, Dorset, SY553994, 11.vii.1997.

HECKFORD, R. J.—*Rhigognostis incarnatella* (Steud.), Speybank VC96 10.ix.1998 (with M. R. Young); *Biselachista serricornis* (Staint.), Trowlesworthy Warren, Devon VC3 bred from stems of *Eriophorum angustifolium* 12 & 22.vii.1998, new to Devon. British literature states the larva mines leaves of *Carex* sp.; this is probably wrong and these are probably the first British bred specimens; *Schiffermuelleria grandis* (Desv.), nr. Canonteign Barton, Devon VC3 bred from dead stems of *Hedera helix* 20.iv. & 4.v.1998; *S. subaquileia* (Staint.), Haytor, Devon VC3 bred from cocoon amongst dead *Vaccinium myrtillus* 16.v.1998, never previously bred before as foodplant/life history had been unknown; *Monochroa hornigi* (Staud.), Elstead, Surrey VC17 bred from *Persicaria* sp. 22.v.1998 (with J.R. Langmaid), larva not previously found in the British Isles; *Gelechia senticetella* (Staud.) Canvey Island, Essex VC18 and Crayford, Kent and Dartford, Kent both VC16 bred from *Chamaecyparis lawsoniana* 8.vi.1998, 29.vi.1998 and 3.vi.1998 respectively, larva not previously found in the British Isles; *Oegoconia caradjai* Popescu-Gorj & Căpușe, Plympton, Plymouth, Devon VC3 (exhibitor's garden) bred from dead leaves of *Juniperus* sp. 23.vi.1998; South Benfleet, Essex (VC18) bred from dead *Quercus* leaf 15.vii.1998; *Olethreutes aurofasciana* (Haw.), Hembury Woods, Devon VC3 24.vii.1998, at light (with B.P. Henwood); *Lobesia botrana* (D. & S.), Marsh Mills, Plymouth, Devon VC3 bred from plum bought at local supermarket 6.viii.1998, moth emerged 2.ix.1998, new to Devon; *Bactra lancealana* (Hübner), Trowlesworthy Farm, Devon VC3 bred from stem of *Eriophorum angustifolium* 29.vi.1998, previously unrecorded British foodplant; *Cranbus perlella* (Scop.), specimen close to ssp. *monochromella*, Aviemore VC95, 9.ix.1998; *Eudonia truncicolella* (Staint.), Brisworthy Burrows, Devon VC3 bred from *Campylopus* sp. 5.vi.1998; Trowlesworthy Warren, Devon VC3 bred from *Dicranum scoparium* 23.vii, 29.vii and 7.viii.1998; Ditsworthy Common, Devon VC3 bred from *Dicranum scoparium* 1.viii.1998; Gutter Mire, Devon 26.viii.1998. These are areas of Dartmoor with a few *Crataegus* bushes and no woodland. Specimens determined as *E. murana* (Curt.) from similar habitats in southern England may well be misidentified *truncicolella*; *Stenoptilia zophodactylus* (Dup.), Tulloch VC96 10.ix.1998 (with M.R. Young) new to VC96.

HENWOOD, B.—*Tebenna micalis* (Mann) reared 10.viii.1998 ex pupa on *Pulicaria* Porthallow, Cornwall. *Sitochroa palealis* (D. & S.) Abbotskerswell, Devon 28.vii.1998. *Palpita unionalis* (Hübner) Abbotskerswell, Devon 21.ix.1998. *Palpita unionalis* (Hübner) Kennack Sands, Cornwall 2.viii.1998. *Olethreutes aurofasciana* (Haw.) Hembury Woods, Devon 14.viii.1998.

HIGGS, G. E.—*Amblyptilia acanthadactyla* (Hübner) and *A. punctidactyla* (Haw.) bred from larvae feeding on the flowers of hedge woundwort (*Stachys sylvatica*) at sites in Yardley Chase and Pitsford Nature Reserve, Northants.

HODGE, P. J.—A specimen of *Mecyna flavalis* (D. & S.), flying over short grassland near the cliff-top at Afton Down near Freshwater, Isle of Wight, SZ3685 on 26.vii.1998.

KNILL-JONES, S. A.—A selection of microlepidoptera from Freshwater, Isle of Wight.

LANGMAID, J. R.—*Coleophora wockeella* Zell. Larval cases, and one specimen bred from *Stachys officinalis*, Petworth, W. Sussex. Cases found 1.x.1997, moth emerged 13.vi.1998. *Monochroa hornigi* (Staud.). One specimen bred from *Persicaria* sp., Elstead, Surrey. Larva found 16.xi.1997, moth emerged 24.v.1998. *Caryocolum blandelloides* Karsholt. Six specimens bred from *Cerastium fontanum*, two from Embo (VC107), two from Littleferry (VC107) and two from Rosmarkie (VC106). Larvae found 27 & 28.vi.1998, moths emerged vii.1998. *Cosmopterix scribaella* Zell. Two specimens bred from *Phragmites australis*, one from Portsmouth and one from Gosport, Hants. Mines found 29 & 30.ix.1997, moths emerged 18.v.1998. New to Hants. *Scythris empetrella* K. & N. Two specimens taken at Findhorn, Morayshire 26.vi.1998. *Bactra lacteana* Caradja. A series of six specimens taken at Plaitford, VC8, 31.vii. & 6.viii.1998. Second known locality in England, and new to VC8.

MANNING, D. V. & RICHARDSON, J. A.—*Pterophorus galactodactyla* (D. & S.), autumn and spring feeding of the larvae on *Arctium minus* spp. *minus* (lesser burdock), a newly recorded host plant.

MCCORMICK, R.—1. Devon records. *Tebenna micalis* (Mann), larvae, pupae and empty pupa cases from Dawlish Warren, 18.viii.1998. *Pseudotelphusa scalella* (Scop.), at light, Hembury Woods, 16.vi.1996, new to Devon. *Ptycholomoides aeriferanus* (H.-S.), at light, Colaton Raleigh Common, 26.vii.1997, new to Devon. *Crambus uliginosellus* Zell., seen in numbers at Colaton Raleigh Common, 20.vii.1998 (also seen July 1997). *Sitochroa palealis* (D. & S.), All Hallows School, nr Rousden, 13.viii.1998, and Thatcher Point, Torquay, 18.viii.1998; there are few records of this species in Devon. *Phlyctaenia stachydalis* (Germ.), seen commonly at Bramble Wood nr Holsworthy, 30.vi.1998 (larvae found on 12.ix.1998), Great Torrington area, 4 & 5.viii.1998, and seen near the Lyd Valley on 18.vii.1998. *Oncocera semirubella* (Scop.), All Hallows School, nr. Rousden, 2.vii.1998 and 13.viii.1998. *Penpelia genistella* (Dup.), one taken at All Hallows School, 13.viii.1998; attempts to find the larvae at Dawlish Warren, where a number of adults have been seen, have so far failed.

2. Species taken or bred from the Burren, Ireland 17–22.v.1998. *Aethes piercei* Obraz. one of a number seen in Kinvara; *Crambus lathoniellus* (Zinck.), the brown Burren form of this species was seen at most localities visited. *Microstega pandalis* (Hübner), two of the three specimens that came to light at Kinvara; *Anania fumebris* (Ström.), the Irish form was taken at Cappaghmore and Loch-na-Bron, 22.v.1998.

NASH, S.—Immigrant *Pyralidae* taken at Durlston Country Park, Swanage, Dorset including nine *Palpita unionalis* Hübn., 18–26.ix.1998 and *Sitochroa palealis* (D. & S.), 22.ix.1998. An aberration of *Pyrausta aurata* (Scop.), Swindon, Wilts, 10.viii.1998.

O'KEEFE, D.—*Celypha woodiana* (Barr.), reared ex larvae on *Viscum album*, Stoke Orchard, Gloucs., collected 13.vi.1998, emerged 7–9.vi.1998. *Eucosma metzneriana* (Tréits.), Wilmington, Kent, 6–12.vi.1998. Apparently established in this locality. Only 5 previous records for Britain. *Ancyliis tineana* (Hübner), reared ex larvae on *Betula pubescens*, Rannoch, Perthshire, collected 22.ix.1997, emerged 10–17.vi.1998. *Athrips tetrapunctella* (Thunb.), Tulloch Moor, Inverness-shire, 24.v.1998. *Xystophora pulveratella* (H.-S.), Tulloch Moor, Inverness-shire, 24.v.1998. *Coleophora wockeella* Zell., reared ex cases on *Betonica officinalis*, nr Dunsfold, Surrey, collected 14.x.97, emerged 27–29.vi.1998. *Dialectica imperialella* (Zell.), reared ex mines in *Symphytum*, Wicken Fen, Cambridgeshire, collected 15.ix.1997, emerged 10–13.iv.1998. *Parectopa ononidis* (Zell.), reared ex mines in *Trifolium repens*, Beltinge,

Kent, collected 22.iv.1998, emerged 11–14.v.1998. *Antispila treitschkiella* (F. v. R.), reared ex mines in *Swida*, Shoreham, Kent, collected 4.ix.1997, emerged 16–25.v.1998. *Acanthopsyche atra* (L.), female bred from a case fixed to a pine trunk, Normandy, Surrey, emerged 18.v.1998. The female was taken to the site on 20.v.1998 at about 7 pm when she was 'calling' and a male assembled shortly after. First Surrey record this century. *Phyllocnistis xenia* Hering, reared ex mines in *Populus canescens*, Sandwich, Kent, collected 12.viii.1998, emerged 17–28.viii.1998. Now locally abundant in East Kent. *Mompha divisella* H.-S., reared ex galls on *Epilobium montanum*, St Ives, Cornwall, collected 5.viii.1998, emerged 23.viii–4.ix.1998.

PARSONS, M. S.—Dorset (VC9): *Tebenna micalis* (Mann), Charmouth, larvae coll. 3.ix.1998. West Sussex (VC13): *Tebenna micalis* (Mann), Atherington, larvae coll. 4.x.1998. East Sussex (VC14): *Choreutis pariana* (Clerck), foot of Beachy Head, Eastbourne, larvae coll. 6.ix.1998; *Adoxophyes orana* (F. v. R.), Icklesham, 28.vii.1998, coll. 1. Hunter; *Diasemiopsis ramburalis* (Dup.), Icklesham, 29/30.viii.1998, coll. 1. Hunter; *Cryptoblabes gnidiella* (Haw.), Bexhill, larvae December 1997, ex-pomegranates. Surrey (VC17): *Monopis fenestratella* (Heyden), Ashtead Common, 19.vi.1998; *Argyresthia trifasciata* Staud., Raynes Park, 20.v.1998–23.v.1998 (2nd to 5th British records); *Argyresthia sorbiella* (Treitschke), Denbies hillside, 20.vi.1998; *Olethreutes bifasciana* (Haw.), Raynes Park, 6.vii.1998; *Eucosma conterminana* (Guen.), Raynes Park, 6.viii.1998; *Strophedra nitidana* (Fab.), Ashtead Common, 19.vi.1998; *Cydia conicolana* (Heylaerts), Raynes Park, 20.v.1998; *Elegia similis* (Zinck.), Ashtead Common, 19.vi.1998; *Cnaemidophorus rhododactyla* (D. & S.), Denbies hillside, larvae coll. 25.v.1998 (first vice-county record); *Merrifieldia baliodactylus* (Zell.), Denbies hillside, larvae coll. 25.v.1998. Middlesex (VC21): *Psychoides filicivora* (Meyr.), Natural History Museum gardens, larvae coll. 30.iii.1998, found amongst decaying London plane leaves (first time the larva has been found in the wild in the British Isles).

PLANT, C. W.—*Tebenna micalis* (Mann) examples from among many seen flying on SW coastline nr Kirkcudbright. First records for Scotland.

ROUSE, A.—*Psanmotis pulveralis* (Hübner) male and female at m.v., Dungeness, Kent, 20.vii.1998. *Sciota adelphella* (F. v. R.), Densole, Kent, 14.vii.1998; *Dioryctria schuetzeella* Fuchs, Orlestone, Kent, 8.vii.1998; *Ephestia kuehniella* Zell. Folkestone Warren, Kent, 2.xii.1997.

SHARPE, P.—Plume moths from Northants.

SIMPSON, A. N. B.—*Caryocolum blandelloides* Karsholt, Loch Fleet, E. Sutherland, reared from larvae in seedheads of *Cerastium fontanum* coll. 27.vi.1998. *Batrachedra pinicolella* (Zell.) beaten from *Pinus sylvestris*, Hartlebury Common, Worcs., 29.vi.1998, first record VC37; *Metzneria aprilella* (H.-S.) bred from seedhead *Centaurea scabiosa*, Bredon Hill, Worcs., 2.vii.1998, confirms now resident in VC37. *Stenoptilia zophodactylus* (Dup.), Knightsford Bridge, Worcs., 1.ix.1998, first record VC37. *Cydia lunulana* (D. & S.), 24.v.1998, Knightsford Bridge, Worcs., first record VC37. *Scythris empetrella* K. & N., beaten from *Calluna* 26.vi.1998, Findhorn dunes, Morayshire.

SIMS, I.—*Micropterix tumbergella* (Fab.) adults from beech (*Fagus sylvatica*) trunks, Homefield Wood, Medmenham, Marlow, Bucks, 27.iv.1998. *Eriocrania chrysolepidella* Zell. adults ex larvae in hazel (*Corylus avellana*), Unhill Wood, Streatley, Berks, 5.v.1997, moths emerged 8.iii.1998. *E. salopiella* (Staint.) adults ex larvae in birch (*Betula pendula*), Bear Wood, Wokingham, Berks., 27.iv.1997, moths emerged 2.iii.1998. *Stigmella ulmariae* (Wocke) adults and cocoon in mine in meadowsweet (*Filipendula ulmaria*), Medmenham, Bucks, 18.ix.1997, moths emerged 6.iv.1998, new vice-county record. Also, mine in meadowsweet, Pensthorpe Nature

Reserve, Fakenham, Norfolk, 19.viii.1998. New vice-county record. *S. hybnerella* (Hübner) adult ex larva mining hawthorn (*Crataegus monogyna*), River Loddon, Lower Earley, Reading, Berks., 30.ix.1995, moths emerged 10.v.1996. *Adela cuprella* (D. & S.) adult at mv light, Ashley Hill Forest, Knowl Hill, Berks., 29.iii.1998, new vice-county record. *Monopis obviella* (D. & S.) adult to house lights, Lower Earley, Reading, Berks., 23.vii.1998 and 21.ix.1998. *M. erocicapitella* (Clem.) adults by day, in flat, Whitley, Reading, Berkshire, 23.viii.90 and 20.vi.98. *Tinea pellionella* (L.) males—F2 generation ex female, my house, Lower Earley, Reading, Berkshire, 16.vii.1997. Larvae fed on fur, feathers and wool, moths emerged 1.vii.98. Females F1 generation, ex same female, moths emerged 20.ii.1998. Larval cases and pupal exuvia F1 generation. *Bucculatrix albedinella* Zell. adult and cocoon ex larva on wych elm (*Ulmus glabra*), Homefield Wood, Medmenham, Bucks., 23.vii.1997, emerged 15.v.1998. *B. cidarella* Zell. adult and cocoon ex larva, alder (*Alnus glutinosa*), River Loddon, Lower Earley, Reading, Berks., 16.ix.1997, emerged 6.v.98. *Caloptilia populetorum* (Zell.) adults, cocoon and pupal exuvia ex larvae on *Betula*, Hainault Forest, Chigwell Row, Essex, 22.viii.1998, emerged 9.ix.1998. Larval fold in leaf, Bear Wood, Wokingham, Berks., 29.viii.1998. *C. clongella* (L.) adults, larval fold, cocoon and pupal exuviae ex larvae on *Alnus*, Medmenham, Marlow, Bucks, 15.ix.1992, emerged 26.ix.1992. *C. betulicola* (Hering) adults, larval fold, cocoon and pupal exuvia ex larva on *Betula*, Syderstone Common, Syderstone, Norfolk, 15.viii.1998, emerged 7.ix.1998. *Parornix carpinella* (Frey) adult, larval folds and cocoon ex larvae on hornbeam (*Carpinus betulus*), Hainault Forest, Chigwell Row, Essex, 4.x.1997, moths emerged 22.ii.1998. *Callisto denticulella* (Thunb.) adult, cocoon, larval workings and parasites on crab apple (*Malus sylvestris*), Medmenham, Bucks., 20.vii.1996, emerged 15.iv.1997. *Leucospilapteryx omisella* (Staint.), adults, mines and cocoons ex larvae in mugwort (*Artemisia vulgaris*), River Loddon, Lower Earley, Berks., 16.ix.1997, moths emerged 8.ii.1998. *Phyllonorycter muelleriella* (Zell.) adults ex larvae in oak (*Quercus robur*), Whitecroft, Forest of Dean, Glouc., 16.xi.1997, moths emerged 24.ii.98; mines in oak, Cirencester Park, Cirencester, Glouc., 16.xi.1997. *P. lantanella* (Schr.) adults and mine ex larvae in wayfaring tree (*Viburnum lantana*), Cirencester Park, Cirencester, Glouc., 16.xi.1997, moths emerged 10.iii.1998. *P. riminetorum* (Staint.) adult and mine ex larva in osier (*Salix viminalis*), reed bed, Woolhampton, Berks., 26.x.1997, emerged 16.iii.1998. *P. strigulatella* (Zell) adults (2), and first mine ex larvae in grey alder (*Alnus incana*), Medmenham, Marlow, Bucks, 27.xi.1997, moths emerged 12.ii.1998. First sighting here in six or seven years. Adults (5) ex larvae in grey alder, Baynes Wood Nature Reserve, Greenham Common, Berks., 16.xi.1997, moths emerged 1.ii.1998. Adult (1) and second mine ex larvae in alder (*Alnus glutinosa*), an unusual food plant, Blacknest Wood, Brimpton, Berks., 10.xi.1997, moth emerged 24.11.1998. Appears to be spreading, perhaps by using the commoner *A. glutinosa*. Also reared from grey alder on western edge of Swindon, Wiltshire, Feb. 1998. *P. anderidae* (Fletcher) adults ex larvae in birch, Litchet Plain, Blackbush, Hants., 8.xi.1997, emerged 20.ii.1998; adults and mine ex larvae in birch, Upper Common, Bucklebury, Berks., 16.xi.1997, emerged 18.ii.1998. *P. emberizaepenella* (Bouché) adult, and mine, ex larva in honeysuckle (*Lonicera periclymenum*), Oldpond Copse, Reading, Berks., 7.x.1997, emerged 28.ii.1998. *Ypsolopha sequella* (Clerck.), adult, mv light, Ashley Hill Forest, Knowl Hill, Berks., 30.vii.1996. *Coleophora laricella* (Hübner), adults and cases, on larch (*Larix decidua*), Pinewood Studios, Iver, Bucks., 23.iv.1998, emerged 8.v.1998. *C. anatipennella* (Hübner) adult, and case, on sloe (*Prunus spinosa*), River Loddon Lower Earley, Reading, Berks., 28.v.1989, emerged 13.vi.1989; adult and case on lime (*Tilia vulgaris*), Oaken Grove,



Medmenham, Berks., 11.vi.1998, emerged 27.vi.98. *C. ibipennella* Zell. adult and case on oak sapling, River Loddon, Lower Earley, Reading, Berks., 30.v.1998, emerged 20.vi.1998. *C. artemiscolella* Bruand. adults, larval feeding sites and cases on mugwort (*Artemisia vulgaris*), River Loddon, Lower Earley, Berks., 26.ix.1997, emerged 15.vii.1998. Also recorded at Burnham Beeches, Slough, Berks. (VC24) and Homefield Wood, Medmenham, Bucks (VC24). *Elachista humilis* Zell. adult, and pupal exuvium, ex larva mining grass, Stoke Row, Oxon., 9.v.1998, emerged 10.vi.1998. *E. bisulcella* (Dup.) adult and pupal exuvium ex larva mining grass, Stoke Row, Oxon., 9.v.1998, emerged 10.vi.1998.

SMITH, I. F.—Photographs of larvae, pupae and imagines of: *Bedellia sommulentella* (Zell.), first records from VCs Cheshire and Derbyshire. *Eperuenia chaerophyllella* (Goeze), first post-1866 record from VC Derbyshire. *Cochylidia implicitana* (Wocke), first record from Scotland: Wigtownshire. *Stenoptilia millieridactyla* (Bruand), first larva found in a non-garden site on *Saxifraga hypnoides* in mainland Britain. *Hellensia osteodactylus* (Zell.), larvae found on *Senecio jacobaea*. *Emmelina monodactyla* (L.) two generations of larvae in 1998: May and August.

WARNE, B. J.—Pyrallidae from Binstead, Isle of Wight: *Sitochroa palealis* (D. & S.) 23.vii.1998; *Palpita unionalis* (Hübner) 25.ix.1998. *Nephoterix angustella* (Hübner) 2.vii.1998; *Elegia similella* (Zinck) 20.vi.1998 (third IOW record). *Homocosoma sinuella* (Fab.) 9.vii.1998.

YOUNG, M. R.—1. Some scarce Scottish species. *Lampronia capitella* (Clerck): the Aberdeenshire locality for this species was destroyed in 1997. Are there any other current British sites for the species? *Olethreutes olivana* (Treits.), examples of the typical Scottish form compared with a smaller darker Yorkshire form. *Achroia grisella* (Fab.) Purgavie, Angus, 7.vii.1998, coll. R. Knill-Jones. This species has recently been very scarce in Scotland.

2. Scarce species from the Inner Moray Firth coast. The coastal area running from Findhorn past the Black Isle to Golspie has a favourable climate, varied natural habitats and a range of interesting species. *Stigmella spinosissima* (Waters), reared, Embo Links, Dornoch, emerged v.1997; *Coleophora mayrella* (Hübner), Littleferry Dunes, Golspie, 27.v.1998; *Agonopterix carduella* (Hübner), Rosemarkie Coast, Black Isle, reared 1.viii.1998; *Scythris empetrella* K. & N., Findhorn Dunes, Moray, 26.vi.1998; *S. picaepennis* (Haw.), Littleferry Dunes, Golspie, 27.vi.1998; *Epiblema tetragonana* (Stephens), Rosemarkie Coast, Black Isle, 28.vi.1998.

#### FOREIGN LEPIDOPTERA

BAILEY, K. E. J.—*Danaus chrysippus* L. taken near Kyrenia, North Cyprus, 10.x.1998. The exhibitor stayed in the area from 6.x to 16.x. A single example was noted on 8.x followed by increasing numbers along the north coast over several days. In some areas it became the most prolific butterfly. It was seen from the Kyrenia area as far east as the Kantara Pass. By 14.x it was becoming scarce, although several were seen in the Famagusta area on the south coast. They appear to have been part of a southward migration from Turkey. During this period there were frequent strong northerly winds. The exhibitor was resident in Cyprus during 1960–1962, and travelled widely, yet never saw a single example.

CORLEY, M. F. V.—(1) *Herpetogramma licarsisalis* Walker, a Pyralid new to Europe (Plate 2, Fig. 13). A single specimen of this species was taken near Mexilhoeira Grande in Algarve, Portugal, in x.1997 by Adrian Gardiner, and subsequently named by Michael Shaffer at the Natural History Museum.

*H. licarsisalis* is a widespread species in the Old World tropics. The specimen was assumed to be a casual migrant. However, in ix.1998, MFVC found the moth to be frequent in a number of sites in central and western parts of Algarve; the eastern part was not visited. Single specimens were subsequently taken at Santo André on the west coast south of Lisbon, and in the Serra de Sao Mamado on the border with Spain, almost directly east of Lisbon. The larval foodplant in Portugal is not known. Since it was clearly well established in Southern Portugal, MFVC predicted that it would soon be found in Spain and Britain. In fact, Spanish specimens were being exhibited simultaneously by Hall (q.v.) and a single *licarsisalis* soon turned up in Britain.

(2) Portuguese Sterrhinae. This subfamily of the Geometridae is one of the groups of Lepidoptera which show the greatest contrast between Britain and southern Europe. At present 96 species (including 59 *Idaea*) are known from Portugal compared with 42 (including 20 *Idaea*) from Britain, and this British total can only be reached by the inclusion of rare migrants, adventives and doubtful records. These moths thrive in the hot dry summers of southern Europe. The larvae can live on withered leaves, which are virtually the only leaves of herbaceous plants to be found in the southern summer. During the hottest and driest part of the year, from June to mid-September, temperatures can reach 40 °C. Few noctuids are flying but small flimsy geometers are abundant.

Some species are very common and are found almost anywhere, but others are more local and are clearly ecologically specialised, though it is usually difficult to see what the requirements are. Some species are univoltine, but others have two or more generations in the year, giving rise to successively smaller and smaller moths as the pabulum desiccates. Some species vary very little, but a number have two colour forms and some show greater variation. Presence or absence of a median shade between two cross-lines occurs in a few species, as in British *aversata*. *I. belemniata* Mill., although not varying greatly in Portugal, is of a quite different form from those found in most of Spain and France, which resemble *dimidiata*.

New species continue to be described from the Iberian Peninsula. Six Portuguese species of Sterrhinae were described in the 1970s or 1980s, and six other species have been added to the Portuguese list in the last eight years. More could await discovery. There is uncertainty about the taxonomic status of a few species. *I. minuscularia* Ribbe may be only a subspecies of *I. seriata* Schrank, and the position of *I. vulpinaria* H.-S. (supposed to be a synonym of *I. rusticata* D.&S.) remains in question.

The identification of species in such a large genus as *Idaea* can be a problem. The examination of genitalia is often necessary, not just for certainty, but to get a pointer to possible identification. The genitalia of many species have not been figured, or are incompletely figured, even for males, and few females are figured at all. Culot is still useful for identification of the more distinctive species, but cannot be relied upon as so many species have been described since it was published. However, they do get easier to identify as the number of species one has not yet seen diminishes.

35 *Idaea* species and 18 other Sterrhinae were exhibited: *Idaea litigiosaria* Boisid., *I. lusohispanica* Herb., *I. sardonata* Homberg, *I. mediaria* Hb., *I. sericeata* Hb., *I. antiqvaria* H.-S., *I. ochrata* Scop., *I. vulpinaria* H.-S., *I. attenuaria* Ramb., *I. alyssumata* Mill., *I. circuitaria* Hb., *I. incisaria* Stdgr., *I. calumetaria* Stdgr., *I. belemniata* Mill., *I. elongaria* Ramb., *I. obsoletaria* Ramb., *I. blaesii* Lenz & Hausmann, *I. lutulentaria* Stdgr., *I. bigladiata* Herb., *I. longaria* H.-S., *I. minuscularia* Ribbe, *I. carvalhoi* Herb., *I. dimidiata* Hufn., *I. subrufaria* Stdgr., *I. subsericeata* Haw., *I. cervantaria* Mill., *I. infirmaria* Ramb., *I. eugeniata* Mill., *I. predotaria* Hartig, *I. exilaria* Guen., *I. ostrinaria* Hb., *I. aversata* L., *I. degeneraria*

Hb., *I. straminata* Borkh., *I. deversaria* H.-S., *Cleta ramosaria* Vill., *Anthometra plumularia* Boisd., *Cyclophora puppillaria* Hb., *C. hyponoea* Prout, *C. suppiuctaria* Zell., *Timandra comae* A. Schmidt, *Scopula ornata* Scop., *S. uivellaria* Ob., *S. decorata* D.&S., *S. decolor* Stdgr., *S. marginipunctata* Goeze, *S. initaria* Hb., *S. emutaria* Hb., *S. minorata* Boisd., *Glossotrophia annae* Mentzer, *G. asellaria* H.-S., *Rhodostrophia calabra* Petagna, *Rhodometra sacraria* L.

(3) Portuguese Momphidae. Until recent times the family Momphidae included a number of groups of genera which are now treated as separate families. These families are Batachedridae, which is not represented in Portugal, although *Batachedra parvulipunctella* Chrétien was recorded erroneously, Agonoxenidae, with only two species in Portugal, Momphidae in the strict sense, which is also poorly represented, mainly because of the scarcity of the willowherb family (Onagraceae), and Cosmopterygidae, which is relatively well represented.

(i) Agonoxenidae: *Tetanocentria buyati* Baldizzone, an autumn-flying species found in evergreen oak-woods. The foodplant is unknown, but all Agonoxenidae species for which the pupulum is known have larvae living in bark, in twigs or in berries. *T. albanica* Rebel, known from a single disjunct site in Portugal, but otherwise found very locally in Central and Eastern Europe.

(ii) Momphidae: *Urodeta hyberniella* Stdgr. a cistus-feeding species. *Mompha miscella* D.&S., which appears to be attached to *Halimium* rather than *Helianthemum*, and *M. epilobiella* Roemer, which feeds exactly as it does in Britain. Besides the three species exhibited, *M. subdivisella* Bradley is recorded, but requires confirmation.

(iii) Cosmopterygidae: This is the largest family with 17 species recorded.

Although many of them have metallic markings, the majority are night-flying. The exhibitor reported that one of them, *Alloclita recisella* Stdgr. appeared in small numbers at torch-light as soon as his mercury vapour light was turned off, whereas none had been seen before. 15 of the species were exhibited: *Gisilia stereodoxa* Meyr., larva on *Acacia*. *Alloclita recisella* Stdgr. life history unknown. *Vulcaniella grabowiella* Stdgr. larva in a case on leaves of *Lavandula*. *V. rosmarinella* Wals., a leaf-miner on *Rosmarinus*. *V. fiordalisa* Petry, larva possibly on *Helichrysum*. *Eteobalea beata* Wals. & *E. intermediella* Riedl, which as a group are reported from roots of *Linaria* & *Antirrhinum*. *E. dohrnii* Zell., larva in the roots of *Plantago albicans*. *Isidiella divitella* Const., larva in spun leaves of *Helichrysum*. *Coccidiphila ledereriella* Zell., larva reported from a number of plants, perhaps feeding on dead leaves. Reared by the exhibitor from pupae in seed capsules of *Cistus*. *C. gerasimovi* Danilevsky, larva on eggs of coccids. *Pyroderces argyrogranulos* Zell., larva in seed-heads of various thistles. *Cosmopteryx crassicervicella* Chrétien, life history unknown & *C. pulcherrimella* Chambers, a leaf-miner on *Parietaria* (Urticaceae). The two species not available for exhibiting were: *Cosmopteryx zieglereella* Hb., a leaf-miner on *Humulus* (Urticaceae), and *Pancalia latreillella* Curtis, mining petioles and rootstocks of *Viola*.

HALL, N. M.—(1) A comparison of *Menophra abruptaria* Thunb., *M. japygiaria* Costa & *M. nyctemeraria* Geyer, three of the commoner *Menophra* species in Europe. The display included upper sides and undersides of normal and melanic specimens of *abruptaria*.

(2) Moths from France: (i) From Ile d'Olonne, Vendée, 21.v.1998: *Hyphoraia testudinaria* Geoffroy, *Lacanobia blenna* Hb. (A very dark form, with two "normal" *blenna* for comparison). (ii) From Ondres Plage, Landes, 14.vi.1998: *Agrotis ripae* Hb. (A very weakly marked form), *Cucullia gnaphalii* Hb.

(3) Moths from Spain: (i) Pays Basque: From Parque Garaio, Vitoria, Alava, 26.v.1998: *Hyphoraia dejeanii* Godart (a Spanish endemic, which is in the red list for Spain,

but was nevertheless very common at Garaio), compared with *testudinaria* which is a much commoner species looking very similar to *dejeani* in the resting position when the hindwings are invisible. *Oligia versicolor* Borkh. (an attractive form). From Arminza, Vizcaya, 13.vi.1998: *Pharmacis fusconebulosa* DeGeer (an unusually patterned form). (ii) Aragon: From Ontiñena, Huesca, 28 & 29.v.1998: *Cnecullia xeranthemi* Boisds., *Hadena rivularis* Fab. (a form with a thickened subterminal white line). From Biel, Zaragoza: *Dicycla oo* L., bred from gravid female. (iii) Cataluña: From El Hospitalet del Infant, Tarragona: *Pseudozarba bipartita* H.-S., 5,6 & 8.v.1998 (an uncommon noctuid moth; Calle, in Noctuidos Españoles, states that there is a single generation in August/September, but these are clearly a spring brood). *Eublemma himniighoffeni* Millière, 1-4 & 9.vi.1998 (a rare noctuid about which little is known). *Helicoverpa armigera* Hb. (bred from *Antirrhinum*). *Idaea degeneraria* Hb. (second brood, bred from gravid female). *Idaea sardonata* Homberg. 12-13.vi.1997, 31.v & 3.vi.1998. (iv) Castilla y Laón: From Cebreros, Avila: *Idaea lulentularia* Stdgr (bred from a gravid female; the larvae fed slowly over the winter on decaying dock leaves). (v) Andalucía: From Vera Playa, Almería: *Idaea alicantaria* Reisser, 22.v.1996 & 19.vi.1997. *Zebeeba falsalis* H.-S. 18.x.1998 (a form with a different jizz to "normal" Spanish *falsalis*). From Mini-Hollywood, Almería: *Hyperlais biskralis* Chrétien 17.v.1993 (new to Spain & Europe). From Playa de los Genoveses, Almería: *Spodoptera exigua* Hb. (a total melanic, compared with an unusually bright and colourful *exigua* from Gran Canaria).

(4) Moths from Fuerteventura, Canary Islands: From Oliva Beach Apartments, Corralejo: *Eudonia parviangusta* Nuss, Karsholt & Meier, iii.1998 (Not in the Klimesch & Arenberger checklist for the Canary Islands [K & A]). *Lamoria anella* D.&S., iii.1998 (not in K&A). *Dolicarthria brugnerialis* Dup., iii.1998 (Not in K&A). *Ancylosis arenosella* Stdgr, *Ancylosis imitella* Hampson, *Ancylosis convexella* & other *Ancylosis* spp. still to be identified. ii.1997 & iii.1998 (Species of *Ancylosis* were extremely common at the apartments. Most were *arenosella*, a narrow-winged species which is very variable with many beautiful forms. Most of the *Ancylosis* species that were not *arenosella* were *imitella*. The *imitella* were slightly smaller and had a black central stripe on the thorax which made them easy to pick out. The range of patterns was at least as great as those of *arenosella*. K&A list nine *Ancylosis* spp. for the Canary Islands most of which have variable wing patterns). *Agdistis bifurcatus* Agjo., ii.1997. *Agdistis pseudocanariensis* Arnbrgr, ii.1997. *Amblyptilia acanthadactyla* Hb., ii.1997. *Lantanophaga pusillidactylus* Walker, ii.1997 (Plume moths were well represented at Corralejo in ii.1997, though hardly any were found in iii.1998).

(5) *Herpetogramma licarsisalis* Walker from the Canary Islands & Spain. These were displayed as "An unidentified Pyralid moth, presumably close to *ruralis* (Spilomelinae)". It was first encountered at Corralejo, Fuerteventura, xi.1997, where it was common and frequently found indoors, and then at Vera Playa, Almería, 18.x.1998. However, M. Corley (q.v.) displayed what was clearly the same species found in Portugal in 1997, new to Europe, and his specimens had been identified at the BM (Nat.Hist). The species looks like a small dark *ruralis*, and males have a distinctive brush of black scales on the forewing costa, usually hidden on the underside.

(6) An unidentified noctuid moth: 3 specimens from Oliva Beach Apartments, iii.98. They appeared to be a species of *Powellinia*.

KEMP, R. J. & HALL, P. R. — A "Playboy" new to Britain. The first record of the South African Lycaenid butterfly *Virachola antalus* Hopffer. Peaches air-freighted to the UK from Mpumalanga (formerly part of the Transvaal) in South Africa during xi.1996 arrived at a handling depot in Colnbrook, Buckinghamshire. Inspection of the produce revealed frequent large entry holes originating at the calyx end of the

fruit and ending internally around the stone. Around a dozen larvae were recovered from these fruits. One pupated and finally hatched in i.1997 and was identified as a female of the lycaenid butterfly *Virachola* (formerly *Deudorix*) *antalus* (Hopffer, 1855). *V. antalus* is common in bush country throughout most of Africa except the southern tip. Its larval foodplants are varied and include bean pods and fruits of Leguminosae, Myrtaceae, Olacaceae, Umbelliferae and Rosaceae. In the case of the latter it can be a minor pest in orchards feeding on fruits of the peach and nectarine (*Prunus persica*). In South Africa its vernacular name is Brown Playboy presumably referring to the darker brown colour of the male and its fast and elusive habit. As far as the exhibitors are aware this is the first record for this species in Britain.

LANGMAID, J. R. — (i) *Coleophora cornutella* H.-S. One specimen, bred from *Betula pubescens*, with its larval case, from Valkenswaard, Holland. Case found 24.iii.1998, moth emerged 18.v.1998. (ii) *Denisia similella* Hb. One specimen bred from a larva found under bark of *Cupressus* sp., from Malle, Belgium. Larva found 25.iii.1998, moth emerged 15.iv.1998. (iii) *Denisia albimaculea* Haw. One specimen from larva found under bark of *Larix*, from Valkenswaard, Holland. Larva found 24.iii.1998, moth emerged 22.iv.98. (iv) *Harpella forficella* Scop. One specimen bred from a rotting fallen branch of oak, from Malle, Belgium. Larva found 25.iii.1998, moth emerged 14.v.1998.

LUCKENS, C. J. — Butterflies from Sicily. 12–26.v.1998.

The butterfly fauna of Sicily is especially interesting as it is Mediterranean with Afroiberian and Balkan affinities, and also provides a refuge for alpine species which normally occur much further north. (i) *Melitaea aetheriae* Hb. (Afroiberian). (ii) *Anthocharis damone* Boisd. & *Spialia orbifer* Hb., both "Balkan". *damone* was found almost wherever *Isatis tinctoria* (Woad) flourished in the Etna, Peloritani and Nebrodi ranges. *orbifer*, which appeared to be local and scarce, is a skipper which occurs eastwards from Austria and in the Balkan Peninsula, but is replaced by *Spialia sertorius* in Western Europe, including the whole of mainland Italy. (iii) *Cyaniris semicargus* Rott., an "alpine" species, from the Madonie Mountains which rise to nearly 2000m. (iv) *Cupido minimus trinacriae* Verity, *Melanargia occitanica pherusa* Bosd. & *Hipparchia aristaeus blachieri* Fruhstorfer, three distinct Sicilian endemic subspecies. (v) *Melliceta athalia celadussa* Fruhstorfer & *Boloria euphrosyne* L., which reach their southernmost limits in Sicily. (vi) *Maniola jurtina* L., a splendid very large form.

MARTIN, G. — Lepidoptera from Madeira, 20.vii.98 to 2.viii.1998.

The main intention of the visit was to survey the Lepidoptera of the Ecological Parque of Funchal. The base was Casa do Barreiro (970 m) from where one to three 125 Watt mv traps were run every night. An mv trap was also used at Casa de Ariero (1593 m) for one night and in the Botanical Gardens in Funchal for two nights. Other records were obtained on day trips. 44 species of macrolepidoptera, 26 species of pyrale and two species of plume moth were recorded which is just over half the total for the island (142 to date). Although the fauna of Madeira is small, many species or subspecies are endemic to either Madeira or Macaronesia (Azores, Madeira, Canaries & Cape Verdes). All identified species were exhibited: (Abbreviations: ME = Madeiran Endemic, MacE = Macaronesian Endemic B.-B. = Bethune-Baker)

Pterophoridae: *Amblyptilia acanthadactyla* Hb., *Gypsochares nielswolffi* Arenberger & Gielis (ME). Pyralidae: *Cryptoblabe gnidiella* Mill., *Pempeliella hundbladi* Rebel (ME), *Pararotruda nesiotica* Rebel (MacE), *Agriphila atlanticus* Woll. (ME), *Eudonia angustea acuminatella* Stt. (ME ssp.), *E. decorella maderensis* Rebel (ME ssp.), *E. scoriella wollastoni* B.-B. (ME ssp.), *Udea atlanticum* B.-B. (ME), *U. ferrugalis* Hb., *U. nmeralis* Hb., *U. maderensis* B.-B. (ME), *Pyrausta sanguinalis* L.,

*Uresiphita gilvata* F., *Botyodes diniasalis* Walk., *Mecyna asinalis* Hb., *Palpita unionalis* Hb., *Spodolea recurvalis* F., *Dupouchelia fovealis* Zell., *Herpetogramma bipunctalis* F., *Nomophila noctuella* D.&S. Geometridae: *Xenochlorodes nubigena* Woll. (ME), *Cyclophora puppillaria* Hb., *C. maderensis* B.-B. (ME), *Scopula irrorata* B.-B. (ME), *Idaea maderae* B.-B. (ME), *Rhodometra saccharia* L., *Xanthorhoe ruficola* Woll. (ME), *X. centrostrigaria* Woll. (Also found in N. America & Canaries), *Eupithecia latipennata* Prout (ME), *Gymnoscelis insulariata* Stt. (MacE), *G. hundsbladi* Prout (ME), *Menophra maderae* B.-B. (ME), *Ascotis fortunata* Blachier (MacE). Sphingidae: *Acherontia atropos* L. Noctuidae: *Cryphia maderensis* B.-B. (ME), *Hyphenalidialis* Hb., *Autographa gamma* L., *Cornutiplusia circumflexa* L., *Thysanoplusia orichalcea* F., *Ctenoplusia limbirena* Guen., *Chrysodeixis chalcites* Esp., *Galgula partita* Guen. (Also found in N. America & Canaries), *Paradrina clavipalpis* Scop., *Spodoptera exigua* Hb., *S. cilium* Guen., *Euplexia dubiosa* B.-B. (ME), *Phlogophora wollastoni* B.-B. (ME), *Methorasa latreillei* Dup., *Mniotype albostigmata* B.-B. (ME), *Mesapania maderensis* Pinker (ME), *Mythimna loreyi* Dup., *M. unipuncta* Haw., *M. serraduguae* Wolff (ME), *Ochropleura leucogaster* Freyer, *Noctua pronuba* L., *N. teixeirai* Pinker (ME), *Xestia c-nigrum* L., *Peridroma saucia* Hb., *Agrotis trux maderensis* Pinker (ME ssp.), *A. atrux* Pinker (ME), *A. rutae* Rebel (ME), *A. segetum* D.&S.

REVELL, R. J. — A selection of Pyralidae captured at tungsten light at Bo, Sierra Leone, West Africa: *Syllepte butleri* Dewitz, *S. sarronalis* Walk., *S. balteata* F., *S. retractalis* Hampson, *S. polycymalis* Hampson, *Dichocrocis fuscoalbalis* Hampson, *Pardomima margarodes* Martin, *P. phalaromima* Meyr., *Pyrausta ferrugalis* F., *Zebronia phenice* Cramer, *Macrogaster tyres* Cramer, *Ghesquillerana lirtusalis* Walk., *Botyodes asialis* Guen., *Conogathes polystidzalis* Hampson, *Eporidia dariusalis* Walk., *Palpita pudoraria* Hb., *Phostria hesusalis* Walk., *Ulopezo latiferalis* Walk., *U. conigeralis* Zell., *U. flavicepsalis* Hampson, *Diaphania aequalis* Walk., *Maruca testulalis* Geyer (The "Mung Moth", a cosmopolitan pest species which has been recorded in Britain on several occasions. The larva attacks the pods of various legumes.), *Hymenia recurvalis* F. (A tropical pest species which has been recorded in Britain on a few occasions.).

TENNENT, J. — Aberrant European and North African Butterflies: Two cases containing aberrant individuals collected during long periods in the field in 1991–1995 (without looking for aberrations), together with normal individuals for comparison. The exhibit consisted of some quite extreme examples of normally variable species and aberrant specimens of species in which variation is infrequent or unrecorded.

Hesperiidae: *Pyrgus malvae* L. A male with upperside forewing white spots extended and rayed (f. *taras*) (France 1995). Papilionidae: *Zerynthia rumina africana* Stichel Two specimens, one with extended black markings, the other asymmetrical with the left hindwing lacking black pigment (both Morocco, 1992). Pieridae: *Colias hecla sulitelma* Aurivillius A male with the orange-yellow upperside colour replaced by lemon yellow and a female with upperside submarginal markings reduced, giving it the superficial appearance of a lightly marked male (both Arctic Sweden, 1991).

*Gonepteryx cleopatra cleopatra* L. A sexual mosaic, primarily female but with a band of male coloration on the left upperside forewing costal margin (Morocco, 1993). Although sexual mosaics and gynandromorphs are rare in nature, a surprisingly large number have been reported among *cleopatra*. *Zegris eupheme maroccana* Bernardi A male with pigment lacking from the upperside forewing apical orange patch (Morocco, 1992). Lycaenidae: *Agrodiaetus thersites* Cantener A sexual mosaic with the left side female and the right side female washed with male coloration (Spain, 1993). *Aricia agestis cramera* Eschscholtz A male with most underside spots obsolete (Morocco, 1992). *Cigaritis zohra monticola* Riley A female with underside

spots reduced or obsolete, and white ground colour extended (Morocco, 1992). Variation in this species is rare. *Cyaniris helena* Stdgr One male with underside forewing spots obsolete (Greece, 1991). *Glaucopsyche melanops algerica* Heyne A male with basal spot of underside forewing series elongated to form a bar and a second male with underside forewing spots reduced and unh spots obsolete (both Algeria, 1993). *Heodes alciphron melibaeus* Stdgr A male with most submarginal and postmedian spots obsolete (Greece, 1995). *Lysandra coridon caelestissima* Verity A male with underside spots obsolete. *L. punctifera* Ob. A series of five males and three females, with variation in underside spotting, ranging from "rayed" examples to a specimen with all spots except the upperside forewing discal spot obsolete (Morocco, 1991-4). *Plebejus argus hypochionus* Ramb. A male with underside submarginal spots elongated (rayed) (Spain, 1994). *P. idas lapponicus* Gerhard Two males with most underside spotting obsolete, and a female with all spots elongated (rayed) (Arctic Sweden, 1993). *P. martini martini* Allard A male with underside forewing spots reduced and unh spots obsolete (Algeria, 1992). *Plebicula atlantica* Elwes One male and two females with underside spots enlarged (Morocco 1992-3). Variation in this species is not often reported and females are rare in collections. *Pseudophilotes barbaggioe* de Prins & van der Poorten Three males with most underside spots obsolete (Sardinia, 1991). *P. baton* Bergsträsser A male with underside spots obsolete (Corsica, 1991). *Zizzeria karsandra* Moore Two males with some underside spots joined (rayed) (Tunisia, 1992). Nymphalinae: *Boloria napaea* Hoffmannsegg A female with the orange upperside markings dull and all black markings extended (Switzerland, 1995). *Eurodryas desfontainii* Godart A series of eight specimens exhibiting variation, often asymmetrical, mainly in respect of the confluence or absence of the upperside forewing median bands (Morocco, 1992-3), and a pair with the distinctive bright orange-red ground colour replaced by pale orange-yellow (Morocco, 1992). *Melitaea cinxia* L. Two males, one with upperside forewing black markings reduced and uph black markings extended and one with upperside black markings extended (Greece, 1991). *M. deserticola* Ob. A male in which many of the underside black markings are reduced or obsolete and the underside hindwing white ground colour extensive (Tunisia, 1993). *M. phoebe occitanica* Stdgr A male with the underside forewing median markings absent and the underside hindwing median band obscured with black spots (Morocco, 1992). *Mesoacidalia aglaja lyauteyi* Ob. A male with upperside black submarginal and postmedian markings extended (Morocco, 1993). Satyrinae: *Erebia palarica* Chapm. Two females, one with upperside postmedian ocelli enlarged and joined, the other with upperside ocelli obsolete and uph ocelli reduced to black spots in spaces 2 & 3 (Spain, 1994). *Maniola jurtina* L. A male with slightly deformed wings in which orange upperside markings are asymmetrical and replaced by off-white (Spain, 1993). *M. nurag* Ghiliani A male with orange upperside markings replaced by pale yellow (Sardinia, 1991). *Melanargia galathea lucasi* Ramb. A male with upperside dark markings extended (Algeria, 1992).

WEDD, D. J. — Species found during two visits to Jersey, Channel Islands, in late x.1997 and early viii.1998, both times in brilliant sunny weather: (i) *Dryobota labecula* Esp. Widespread on *Quercus ilex* in late x.97 Captives laid numerous ova, but only after 5 or 6 days feeding on sugar water. Eggs were laid in neat rows along the veins of the leaves of potted *ilex* saplings. They hatched but did not feed successfully. Clearly, very soft new leaves are required. (ii) *Trigonophora flammica* Esp. One of the commonest species in x.1997 to light everywhere, even to street lamps. (iii) *Eumichtis lichenea* Hb. Very numerous and with little variation. (iv) *Lasiocampa trifolii* D. & S. Many males at MV on the west coast; fewer elsewhere. Very similar to the form found in SW England. No females seen. (v) *Tethea ocularis*

Hb. A distinctive second brood, viii.1998. (vi) *Idaea degeneraria* Hb. Newly emerged specimens, viii.1998, suggesting a second brood. (vii) *Jodis lactearia* L. Definite second brood; numerous. (viii) *Lomaspilis marginata* L. Very variable and very numerous. (ix) *Selenia lunularia* Hb. A distinctive second brood. (x) *Thamnetopaea processionea* L. Resident on Jersey, flying mainly in August. Burrow took 3 females on 15.viii.1998, but none would lay. Perhaps, like *castrensis* L., the female only flies after laying. (xi) *Coscinia cribraria trivittata* South. Numerous in several areas on the west coast. (xii) *Euplagia quadripunctaria* Poda 25–30 to MV every night, and also flying at dusk and by day. Less than 5% were of the yellow form, and the intermediate salmon coloured form was rarer still. (xiii) *Agrotis vestigialis* Hufn. A distinctive form; common. (xiv) *Trachea atriplicis* L. Resident on Jersey; almost certainly double-brooded. (xv) *Agrotis crassa* Hb. More than 400 came to MV in 4 nights in the Grouville area, yet *crassa* had previously been seldom seen on Jersey. Smaller numbers were seen elsewhere. The literature suggests that *crassa* likes marshy ground, yet the main locality for it on Jersey is the Grouville Golf Course. It is a lazy moth, flying little when captured. Several pairings were observed in the trap. (xvi) *Ochropleura plecta* L. An unusual ab.; abundant. (xvii) *Mythimna albipuncta* D. & S. One of the most abundant species with at least 3 broods a year; newly emerged imagines were flying in x.1997 and viii.1998. *M. vitellina* Hb. is also resident and numerous. (xviii) *Acontia lucida* Hufn. One to Gorey Castle Light, the other to MV at Grouville, mid viii.1998. Both of these sites are on the east coast. A third specimen was photographed on the west coast, at the place where Burrow took the only other specimen to be recorded on Jersey in 1995. Hence, possibly resident. (xix) *Orthonama obstipata* F. Very numerous in viii.1998 to MV, but also flying by day in gardens. (xx) *Evergestis extimalis* Scop. Recorded in four different localities in viii.1998. In numbers at Grouville. Previously only recorded twice from Jersey. (xxi) *Hypena obsitalis* Hb. Everywhere on Jersey; only one seen at MV, but flying at dusk and even in daylight. 40+ in a German bunker on the west coast, and larvae at all stages on pellitory (*Parietaria*) near the entrance. The Jersey specimens were decidedly larger than those of mainland England. (xxii) *Cethosia hypsea* Doubleday Captured in bright sunlight at the edge of woodland at Rozel Bay, 10.viii.1998. Identified by Mark Parsons & Phil Ackery at the BM (Nat.Hist.). An Indonesian species!

## DIPTERA

There was an increase in the number of exhibitors this year and fewer exhibits in common with the annual meeting of Dipterists Forum, which was held two weeks later, for the first time in Cardiff. Several species recently recognised as new to the British fauna were included and the dead-wood-associated craneflies of the genera *Ctenophora* and *Tanyptera* appeared in several exhibits. Observations were made on the little-known *C. ornata* Meig., rarely recorded outside Windsor and New Forests, in both these areas.

ALEXANDER, K. N. A. — (1) Two nationally scarce flies found in Gloucestershire in 1998: *Zodion notatum* (Meigen) (Conopidae), Snows Farm, Slad, limestone grassland, 25.v; *Dioxya bidentis* (Rob.-Des.) (Tephritidae), Ashleworth Ham, swept from *Bidens tripartita*, 13.ix.

(2) Highlights from the National Trust's Biological Surveys in 1998: *Solva marginata* Meig. (Xylomyiidae), Leith Hill Place, Surrey, on *Liriodendron* trunk, 16.vii; *Haematopota grandis* Meig. (Tabanidae), Mwche saltmarshes, Carm., 17.viii.



CHANDLER, P. J. — The British species of *Anapaais* (Scatopsidae): examples of six species now known from Britain, with the addition of *A. rectinervis* Duda (from Dinton Pastures Country Park, Berks., male in fen/carr at south end of Mortimer's Meadows, 27.v.1993, and Woodwalton Fen, Hunts., 24.v.1980, both sexes) and recognition that "*A. soluta* (Loew)" of previous authors comprises three species, of which both sexes can only be recognised by the structure of the terminalia, of which sketches of the salient features were also exhibited (these species are fully characterised and keyed by Chandler, 1999, *Dipterists Digest (Second Series)* 6: 1–19).

COLLINS, G. A. — (1) Craneflies (Tipulidae) associated with dead wood: *Ctenophora flaveolata* (F.), Ridley Plain, New Forest, Hants., 7.v.1998; *Tanyptera atrata* (L.), female ovipositing in a long-dead birch (*Betula*) stump, Bagmoor Common, Surrey, 27.v.1998, and male, Pamber Forest, N. Hants., 13.v.1995; *T. nigricornis* (Meig.), Blatchford Downs, Surrey, 1.vi.1998.

(2) Other RDB species found in 1998: *Thyridanthrax fenestratus* (Fall.) (Bombyliidae), Hankley Common, Surrey, 19.viii; *Myemiss octopunctata* (Coquebert) (Ulidiidae), Beddington Sewage Farm, Surrey, 22.viii; *Myopites imulaedysentericae* Blot (Tephritidae), a mainly coastal species found more widely in recent years, Ashted Common, Surrey, reared from galls on fleabane (*Pulicaria dysenterica*), emerged 24.ii.

DOBSON, J. R. — The two species of Braulidae now known to occur in the British Isles: *Braula coeca* Nitzsch, a ubiquitous species in honey-bee (*Apis mellifera* L.) colonies, and *B. schmitzi* Örösi-Pál, an addition to the British list, from a pooled sample—England and Wales, autumn 1994–spring 1995; its status is presently unknown.

FORMSTONE, B. — Diptera from Wales, including some new national and county records: *Prionocera subsericornis* (Zett.) (Tipulidae), Gresford, Denb., lowland mire, 13.viii.1998, new to Wales; *Nephrotoma cornicina* (L.) (Tipulidae), Gresford, Denb., plentiful at edge of an old sand quarry, some males resting on gorse, 2.viii.1998, new to North Wales; *Tipula livida* Wulp (Tipulidae), Marford Quarry, Denb., old sand quarry, 2.vi.1997, new to Wales; *T. melanoceros* Schumm. (Tipulidae), Gresford, Denb., several in lowland mire, 15.ix.1998; *T. helvola* Loew (Tipulidae), Gresford, Denb., pine plantation at site of a sand quarry, 29.vii.1998, new to Denbighshire; *T. grisescens* Zett. (Tipulidae), Esclusham Mountain, Denb., a pair *in copula* on an upland bog, 7.iv.1998, second Welsh record; *Tabanus cordiger* Meig. (Tabanidae), Erddig Park, Denb. on bog by a stream in woodland, 9.vi.1992, new to Denbighshire; *Haematopota grandis* Meig. (Tipulidae), Whiteford Burrows and Oxwich Burrows, Glam., 15.viii.1998; *Pamponerus germanicus* (L.) (Asilidae), Pwllheli, Caern., several in dunes, 24.v.1994; *Dialineura anilis* (L.) (Therevidae), Morfa Harlech, Mer., on dunes, 10.vii.1997; *Platychyris discimanus* Loew (Syrphidae), Gresford, Denb., at sallow (*Salix*) blossom in disused sand quarry, 30.iii.1998, new to North Wales; *Chetostoma curvinerve* Rond. (Tephritidae), Clyne Park, Swansea, Glam., wing flicking on *Rhododendron* foliage, 18.viii.1998, new to Wales (further details of this and other recent records are given by Chandler, P.J., 1998, *Dipterists Digest (Second Series)* 5: 107–108); *Oestrus ovis* L. (Oestridae), Llanerchaeron, Card., on wall of National Trust property, 14.viii.1997.

HALSTEAD, A. J. — Some scarce or local Diptera found in 1998: *Stratiomys potanida* Meig. (Stratiomyidae), St Gabriel's Farm, Golden Cap, Dorset, 30.vi; *Chrysops sepulchralis* (F.) and *Atylotus fulvus* (Meig.) (Tabanidae), Oakers Wood Bog, near Affpuddle, Dorset, 3.vii; *Thereva handlirschi* Kröber (Therevidae), Linn of Dee, S. Aber., 8.ix, on fence post; *Dioctria cothurnata* Meig. (Asilidae), Loscombe Nature

Reserve, Loscombe, Dorset, 28.vi; *Choerades marginatus* (L.) (Asilidae), Whitmoor Common, Surrey, on pine (*Pinus*) trunk, 9.viii; *Brachypalpoides lentus* (Meig.) (Syrphidae), RHS Garden, Wisley, Surrey, 5.vi, on wild rose (*Rosa*) flower; *Psilota anthracina* Meig. (Syrphidae), Warburg BBONT Reserve, Oxon., 9.v; *Volucella zonaria* (Poda) (Syrphidae), Wisley Village, Surrey, emerging from *Vespa vulgaris* (L.) nest in ground, 4.ix; *Myopa fasciata* Meig. (Conopidae), Horsell Common, Surrey, 9.viii; *Zodion cinereum* (F.) (Conopidae), Tadnoll Nature Reserve, near Tadnoll, Dorset, heathland edge, 3.vii; *Acanthiophilus helianthi* (Rossi) (Tephritidae), Knaphill, Surrey, 23.vi, on *Iris* leaf by garden pond; *Tephritis conura* (Loew) (Tephritidae), River Ardle at Enochdhu, Perth., male 6.ix and female 11.ix; *Megamerina dolium* (F.) (Megamerinidae), Powerstock Common, Dorset, 28.vi; *Ochthera mantis* (De Geer) (Ephydriidae), Albury Bottom, Chobham Common, Surrey, boggy pools, 15.viii.

HARVEY, M. C.—(1) *Ctenophora ornata* Meig. (Tipulidae), Highstanding Hill, Windsor Forest, Berks., SU936744, 14.viii.1998, a photograph of a male found in a mercury vapour trap; while in captivity awaiting photography, it appeared to actively seek moisture from damp wood when provided with a decaying log; the fly was released on the next day, onto a beech (*Fagus sylvatica*) trunk, where it sat for about ten minutes before flying off into the undergrowth and coming to rest on shaded damp leaf litter.

(2) Diptera from Berks. and Oxon in 1998: *Metalimnobia quadrimaculata* (L.) (Limoniidae), Highstanding Hill, Windsor Forest, Berks., SU936744, 14.viii, feeding at sugar-rope applied to attract moths; *Rhagio strigosus* (Meig.) (Rhagionidae), male at Upper Basildon, Berks., SU58427610, 3.vii, male at Ashampstead Common, Berks., SU578748, 2.viii, and female at North Unhill Bank, Berks., SU562832, 8.vii—altogether over 150 individuals seen, mostly at Upper Basildon site, from 3.vii to 3.ix, males congregating on tree trunks in "downlooker fly" fashion, females less easy to find but two occurred on house windows (the common *R. scolopaceus* (L.) was exhibited for comparison); *Platycheirus occultus* Goeldlin de Tiefenau, Maibach & Speight (Syrphidae), Cholsey Marsh, Berks., SU598854, 5.viii; *Chetostoma curvinerve* Rond. (Tephritidae), Kingwood Common, Oxon, SU695825, 21.vi (further details are published elsewhere as indicated under Exhibit by B. Formstone above).

HAWKINS, R. D.—A selection of the more spectacular and interesting flies collected during 1998 at Bagmoor Common, Surrey (SU9242), a Wildlife Trust reserve consisting mostly of birch and pine woodland, acid grassland, bracken and restored heathland. *Tanyptera atrata* (L.) (Tipulidae), 15.v, black and brown forms of male flying around stump of dead birch; *Asilus crabroniformis* L. (Asilidae), 2.viii, female; *Dioctria oelandica* (L.) (Asilidae), 23.v; *Eutohmus rufibarbis* (Meig.) (Asilidae), 2.viii, female; *Pipiza bimaculata* Meig. (Syrphidae), 23.v, female beaten from hawthorn; *Cheilosia scutellata* (Fall.) (Syrphidae), 29.viii, female hovering over mushroom believed to be *Boletus scaber*; *Eupeodes latihumulatus* (Collin) (Syrphidae), 29.viii, female at flowers of heather, *Calluna vulgaris*; *Gymnosoma rotundatum* (L.) (Tachinidae), 23.v, male.

HODGE, P. J.—Eleven species of Diptera from southern England in 1998: *Paracrocer orbiculus* (F.), *Ogcodes gibbosus* (L.) and *O. pallipes* Latr. (Acroceridae), Little Langford Down, Wilts., SU0434, 4.vii, all three British species of the family swept from chalk grassland; *Platypalpus luteolus* (Collin) (Hybotidae), Llangua, Gwent, SO388254, swept off bank of River Monnow, 3.vi; *Rhizophomyia gibba* (Fall.) (Empididae), Eelmoor Marsh SSSI, N. Hants, SU841534, 28.vi; *Hilara lugubris* (Zett.) (Empididae), Fleet Pond LNR, N. Hants., SU8254, 16.vi, female

swept from tree foliage above shaded stream; *Pelecocera tricincta* Meig. (Syrphidae), Eelmoor Marsh SSSI, N. Hants, SU840535, 28.vi. swept off bog myrtle (*Myrica gale*) in wet heathland, and Parkhurst Forest, Isle of Wight, SZ4790, 29.vi. heathy ride in young conifer plantation; *Trypeta artemisiae* (F.) (Tephritidae), The Moors NR, Bishop's Waltham, S. Hants, SU559169, 18.vi. female swept off osier (*Salix* species); *Urophora spoliata* (Hal.) and *Terellia vectensis* (Collin) (Tephritidae), Afton Down, Isle of Wight, SZ3685, 26.vii. on saw-wort (*Serratula tinctoria*) near cliff-top; *Terellia winthemi* (Meig.) (Tephritidae), Colley Hill, Reigate, Surrey, TQ2452, 12.vi. on welted thistle (*Carduus acanthoides*).

KNILL-JONES, S. A. — *Vohucella zonaria* (Poda) (Syrphidae), Freshwater, Isle of Wight, 14.ix.1998.

MCLEAN, I. F. G. — Platypezidae from the autumn field meeting of Dipterists Forum in Heref., x.1998, eight species from Haugh Wood and Conigree Wood, 12.x: *Agathomyia woodella* Chandler, *A. cinerea* (Zett.), *A. unicolor* Oldenberg, *Platypeza hirticeps* Verrall and *P. consobrina* Zett. from Haugh Wood; *Agathomyia unicolor*, *Protoclythia modesta* (Zett.), *P. rufa* (Meig.) and *Platypeza aterrima* Walker from Conigree Wood; this was the third confirmed British record for *A. cinerea*, which had earlier been confused with other species.

PARKER, M. — Diptera from Dorset in 1998: *Atylotus fulvus* (Meig.) (Tabanidae), Oakers Bog, male taking nectar from *Juncus acutiflorus*, 25.vii; *A. latistriatus* Brauer (Tabanidae), Newton Bay, Isle of Purbeck, 2.viii. male taking nectar from *Limonium vulgare*; *Eutolmus rufibarbis* (Meig.) (Asilidae), Merritown Heath, 2.vii. male in dry acid grassland and Newton Bay, Isle of Purbeck, 26.vii. saltmarsh edge; *Machimus rusticus* (Meig.) (Asilidae), Hod Hill, 5.vii. swept from long grass; *Cheilosia semifasciata* Becker (Syrphidae), Piddles Wood, 9.v. female at *Ranunculus ficaria* flower; *C. griseiventris* Loew (Syrphidae), Wether Hill, male, 23.v; *Chrysotoxum octomaculatum* Curtis (Syrphidae), Isle of Purbeck, Newton Bay, 26.vii. female at *Limonium vulgare* flowers, and Grange Heath, 16.viii. female hovering over bare sand; *Pipiza lugubris* F. (Syrphidae), Warmwell Heath, female, 21.vi; *Platycheirus splendidus* Rotheray (Syrphidae), newly described by G. E. Rotheray (1998, *Entomologist's Gaz.* 49: 271–276), Mostertown Down, W. Dorset, two females on a wooded bank, 15.v and 24.vii.

PERRY, I. — Uncommon Diptera found in 1998: *Hilara hybrida* Collin (Empididae), Ballinluig Island, River Tummel, Perth, 5.vi; *Syntormon filiger* Verrall (Dolichopodidae), Snettisham, Norf., 25.vii. swept from brackish marsh; *Cephalops perspicuus* (de Meijere) (Pipunculidae), Holme Dunes, Norf., 8.viii. swept from *Phragmites australis* in dune slack; *Cheilosia griseiventris* Loew (Syrphidae), Holme Dunes, Norf., 8.viii. edge of dune slack, and Snettisham, Norf., 15.viii; *Sphegina sibirica* Stackelberg (Syrphidae), Black Wood of Rannoch, Perth, 2.vi. and Balnaught, Inv., 10.vi; *Goniglossum wiedemanni* (Meig.) (Tephritidae), Holme Dunes, Norf., 18.vii. swept from *Bryonia dioica*; *Myopites imulaedysentericae* Blot (Tephritidae), Holme Dunes, Norf., 8.viii. swept from *Pulicaria dysenterica* at edge of dune slack; *Campiglossa producta* (Loew) (Tephritidae), Holkham, Norf., 2.viii. and Studland, Dorset, 29.vi. both swept from dunes; *Parochthiphila coronata* (Loew) (Chamaemyiidae), Holme Dunes, Norf., 11.vii and 8.viii. swept from dunes; *Platycephala umbraculata* (F.) (Chloropidae), The Spittles, Dorset, 28.vi. swept from *Phragmites australis*; *Fannia tuberculata* (Zett.) (Fanniidae), Linn of Dee, S. Aber., 31.v.

PLANT, C. W. — (1) Possible mimicry between hoverflies (Syrphidae) and other flies; possible cases of mimicry where neither partner is apparently a danger to

predators, but the apparent mimicry extends beyond coloration to include behavioural traits: (a) *Lejops vittatus* (Meig.) common around Lake Balaton, Hungary, 17.v.1997, and an unidentified sarcophagid fly from the same site, which behaves similarly and in flight looks almost identical to the hoverfly; (b) *Eristalis arbustorum* (L.) and *E. horticola* (De Geer), British specimens, and *Ectophasia crassipennis* (F.) (Tachinidae), Razac d'Eymet, France, 21.v.1996, common on road verges with both *Eristalis* species and it was necessary to net the flies to tell them apart; (c) *Eristalinus sepulchralis* (L.), a British specimen shown with an unidentified calypterate from southern France, ix.1997, both species abundant on white umbels and the calypterate also observed to hover well.

(2) Some common Hungarian hoverflies (Syrphidae), including some considered uncommon or rare in Britain, which are commonly encountered in suitable habitat in Hungary: *Anasimyia interpuncta* (Harris), abundant in flood-plains of the Danube; *Brachyopa dorsata* Zett., common in ancient forest; *Brachypalpoidea lentus* (Meig.); *Brachypalpus valgus* (Panz.); *Caliprobola speciosa* (Rossi), very common in beech forest where it exhibits a territorial display flight in rays of sunlight above beech stumps, also taken in a Malaise trap amongst *Salix*-invaded reeds at the edge of Lake Balaton; *Chalcosyrphus emotus* (Loew), in damp ancient woodland; *Cheilosia canicularis* Panz., frequent in woodland; *Chrysotoxum elegans* Loew; *C. festivum* (L.); *C. vernale* Loew; *Ceriana conopsoides* (L.), at sap runs on beech trunks; *Criorhina asilica* (Fall.), common on leaves of trees at edges of woodland rides when it is raining; *Eupeodes* (subgenus *Lapposyrphus*) species A sensu Stubbs, female at edge of beech forest by a lake; *Helophilus trivittatus* (F.); *Lejops vittatus* (Meig.), very common about reeds in ditches with scrub down one side but not the other, the flies being found opposite gaps in the scrub, flying about six inches below the tops of last year's dead reed stems in a characteristic manner; *Merodon armipes* Rond., abundant on calcareous grassland; *Microdon analis* (Macq.), about cut stumps and associated ant nests on recently cleared woodland slope on calcareous soil; *M. mutabilis* (L.), very common in dry calcareous grassland, absent from wetter areas; *Neoscasia unifasciata* (Strobl); *N. annexa* (Müller); *Pipiza fasciata* Meig.; *P. festiva* Meig.; *Pipizella amulata* (Macq.); *Sphiximorpha subsessilis* (Illiger), at sap runs on beech trunks; *Tropidia scita* (Harris); *Volucella inflata* (F.), in almost every oak (*Quercus*) woodland.

SOFTLY, R. A.—*Conops quadrifasciatus* De Geer (Conopidae), Hampstead Heath, Middx.

WARING, P.—*Ctenophora ornata* Meig. (Tipulidae), a female from Whitley Wood, near Brockenhurst, New Forest, Hants., on the BENHS Field Meeting on the afternoon of 22.viii.1998. Three males were captured in light traps soon after dusk the same day at Anses Wood in the north-west of the New Forest.

#### COLEOPTERA

ALEXANDER, K. N. A.—Three Red Data Book beetles found by members of the Gloucestershire Invertebrate Group during 1998. *Ampedus rufipennis* (Steph.) (Elateridae), Nottingham Hill, 26.iv.1998, from decaying ash pollard (A. Taylor); *Hypulus quercinus* (Quens.) (Melandryidae), Pinbury Park, 21.vi.1998, in old oak stump (J. Harper), new to Glos; *Osphya bipunctata* (F.) (Melandryidae), Alderley Wood, 23.v.1998, knocked off hawthorn blossom (K.N.A.A.).

ALEXANDER, K. N. A., FOSTER, A. P. & GODDARD, D. G.—A selection of the more interesting beetles found during the work of the National Trust's Biological

Survey Team in 1998. *Abraeus granulum* Er. (Histeridae), Blickling Park, E. Norfolk, 26.vi.1998, in old decayed beech stump; *Scydmaenus rufus* Müller, P. W. J. & Kunze (Scydmaenidae), Leith Hill Place, Surrey, 16.vii.1998, one beneath bark on old stump; *Dytiscus circumcinctus* Ahrens (Dytiscidae), Berrington Hall, Hereford, 4.viii.1998, in parkland pond; *Omaloplia ruricola* (F.) (Scarabaeidae), Figsbury Ring, Wiltshire, 12.vi.1998, the scarce black form swept from calcareous grassland; *Gnorinus nobilis* (L.) (Scarabaeidae), Croft Ambrey, Hereford, 6.viii.1998, beaten off foliage of ancient oak containing red rot; *Agrilus viridis* (L.) (Buprestidae), Witley Common, Surrey, 8.vi.1998, beaten off foliage of young oak; *Cardiophorus vestigialis* Er. (Elateridae), Salcombe, S. Devon, 21.vi.1998, on flowers of *Smyrniun olusatrum* along coastal footpath; *Epiphaniis cornutus* Esch. (Eucnemidae), Blickling Park, E. Norfolk, 22.vi.1998, one at rest on exposed heartwood on side of live oak; *Hylis olexai* (Palm) (Eucnemidae), Reigate Hill, Surrey, 20.vii.1998, swarming about cut end of beech trunk felled after Great Storm of 1987; *Trinodes hirtus* (F.) (Dermestidae), Hanbury Park, Worcs, 17.vi.1998, from dry rot hole in old dying oak; *Lymexylon navale* (L.) (Lymexylidae), Hatchlands Park, Surrey, 17.vii.1998, ovipositing in exposed heartwood on side of live oak; *Uleiota planata* (L.) (Cucujidae), Croft Castle Park, Hereford., 4.viii.1998, beneath sappy bark on recently fallen oak trunk; *Mycetophagus populi* F. (Mycetophagidae), Studley Park, Mid West York, 22.iv.1998, beneath sappy bark on recently fallen lime; *Synchita humeralis* (F.) (Colydiidae), Selborne Common, N. Hants, 9.vii.1998, beating oak bough; *Pseudocistela ceramboides* (L.) (Tenebrionidae), Hanbury Park, Worcs, 17.vi.1998, inside hollow oak trunk; *Lissodema cursor* (Gyll.) (Salpingidae), Berrington Hall Park, Hereford, 4.viii.1998; *Abdera biflexuosa* (Curtis) (Melandryidae), St. Helens Duver, Isle of Wight, 2.vi.1998, from oak at woodland/saltmarsh transition; *Phaedon concinnus* Steph. (Chrysomelidae), Mwche saltmarshes, Carmarthen, 17.viii.1998, common by suction sampling; *Trachyphloeus asperatus* Boh. (Curculionidae), Cley Hill, S. Wilts, 30.vi.1998, common by suction sampling; *Rhinocyllus conicus* (Froelich) (Curculionidae), Melbury Down, Wilts, 9.vi.1998, on spear thistle *Cirsium vulgare*; *Cionus nigratarsis* Reiter (Curculionidae), Haresfield Hill, E. Gos, 28.vii.1998, on *Verbascum nigrum*; *Trachodes hispidus* (L.) (Curculionidae), Gentle's Copse, Ludshott, N. Hants, 10.vii.1998, commonly by beating oak boughs; *Rhynchaenus pratensis* (Germar) (Curculionidae), Wicken Fen, Cambs, 12.viii.1998, swept from open ride with devil's-bit scabious *Succisa pratensis*; *Taphrorychus bicolor* (Herbst) (Scolytidae), Hatchlands Park, Surrey, 17.vii.1998.

ALLEN, A. J. W. — Some beetles found during 1997 and 1998. New vice-county records are marked with an asterisk (\*). Carabidae: *Bembidion nigropiceum* (Marsh.), Durdle Door, Dorset, viii.1998; *B. virens* Gyll., near Oykel Bridge, Sutherland, viii.1998; *Pterostichus lepidus* (Leske), Alderholt, Dorset, vii.1998; *Harpalus honestus* (Duft.), St. Bee's Head, Cumberland, viii.1998; *H. tenebrosus* Dejean, Durdle Door, Dorset, viii.1998; Dytiscidae: *Graptodytes bilineatus* (Sturm), Cogden Beach, Dorset, ii.1998; *Oreodytes alpinus* (Payk.), Loch More, Caithness, viii.1998; Leiodidae: *Leiodes picea* (Panz.), Dorback, Nethy Bridge, Elgin, viii.1998; Staphylinidae: *Bledius arcticus* Sahlb., Dorback, Nethy Bridge, Elgin, viii.1998; \**B. dissimilis* Er. near Ringwood, S. Hants, v.1998; *Rugilus geniculatus* (Er.), Alderholt, Dorset, x.1998, in tussock; *Pseudopasilia testacea* (Bris.), Grain, W. Kent, v.1998, near shore; Elmidae: *Oulinmius rivularis* (Rosen.), TL49, Cambs, v.1998; *Stenelmis canaliculata* (Gyll.), Water Newton, Cambs, ix.1998; Coccinellidae: *Nephus quadrimaculatus* (Herbst), West Molesey, Surrey, xi.1997; Chrysomelidae: *Calomicrus circumfusus* (Marsh.), Alderholt, Dorset, vii.1998; *Longitarsus quadriguttatus* (Pont.), Barton Mills, W. Suffolk, ix.1998; Curculionidae: *Magdalis barbicornis* (Lat.), East Hemsey,

Oxon, vii.1998; *Baris analis* (Ol.), Eype's Mouth, Dorset, vi.1998; Scolytidae: *Trypophloeus asperatus* (Gyll.), Alderholt, Dorset, vii.1998.

BOOTH, R. G.—(1) Three species of Coleoptera new to Britain. *Placusa complanata* Er. and *Phloeopora nitidiventris* Fauvel (Staphylinidae), Brentmoor Heath NR (a Surrey Wildlife Trust Reserve), Lightwater, SU9361, 30.xi.1997, several specimens from frass under bark of felled scots pine *Pinus sylvestris* trunk attacked by *Ips sexdentatus* (Boerner) (Scolytidae) (taken in company with *Placusa depressa* Mäklin and *Phloeopora testacea* (Mann.) which were shown for comparison); *Tychius brevisculus* Desb. (Curculionidae), Eype's Mouth, Dorset, SY4491, 3.vi.1993, a single male swept.

(2) A selection of rare or notable Coleoptera, including new county or vice-county records. *Agathidium confusum* Bris. (Leiodidae), Burnham Beeches, Bucks, SU9584, 25.vi.1994, one male; *Halaeritum punctum* (Aubé) (Histeridae), Crymlyn Burrows, Glamorgan, SS7192, 16.v.1998, four specimens under strandline debris; *Ptenidium brenskei* Flach (Ptiliidae), Bossington, S. Somerset, SS893484, 6.vii.1997, one in river shingle, new to Somerset and the most southerly British record; *Ptinella britannica* Matt. (Ptiliidae), Thompson Common, W. Norfolk, TL9396, 8.iv.1998, sieving sedge litter; *Acrotichis lucidula* Ross. (Ptiliidae), Thompson Common, W. Norfolk, TL9396, 8.iv.1998, sieving sedge litter; *Scopaeus laevigatus* (Gyll.) (Staphylinidae), edge of Bayfield Pond, Bookham Common, Surrey, TQ1255, 28.vii.1996, one female; *S. minutus* Er. (Staphylinidae), Pignal, New Forest, SU313036, 10.iv.1997, one male landed on sieving sheet in late afternoon, new to Hampshire; *Rugilus geniculatus* (Er.) (Staphylinidae), Brentmoor Heath NR (a Surrey Wildlife Trust Reserve), Lightwater, SU9361, 30.xi.1997, one male sieved from *Formica rufa* L. (Hymenoptera: Formicidae) nest material; *Ocyopus nero* (Fald.) (Staphylinidae), Bradenham, Bucks, SU8297, 16.ii.1998, one female from pitfall trap on set-aside land at edge of cereal field, probably new to Bucks; *Gnypeta ripicola* (Kies.) (Staphylinidae), Dinefwr Park, Carmarthen, SN6022, 16.v.1998, one female from soft wet mud, new to Wales; *Atheta hybrida* (Sharp) (Staphylinidae), Haddenham, Cambs, TL4676, 13.vii.1997, one female from fallen rotting elm trunk; *Brachygluta pandellei* (Saulcy) (Pselaphidae), Ardrhu Onich, Westernness, NN0161, 16.viii.1995, one male by sieving old seaweed; *Laricobius erichsoni* Rosen. (Derodontidae), Loch an Eilein, Easternness, NH8808, 22.viii.1995; Abernethy Forest NR, Easternness, NH91 and NJ01, 24.viii.1995 and vi.1996; Loch Vaa, Moray, NH91, 19.vi.1996; abundant by beating pine *Pinus*, alder *Ahus glutinosa* and birch *Betula*; *Dorcatoma dresdensis* Herbst (Anobiidae), Ashtead Common, Surrey, TQ1659, 13.ii.1998, several larvae in old *Ganoderma* bracket on beech tree, adults emerged v-vi.1998; *Atomaria lohsei* Johnson & Strand (Cryptophagidae), Ashtead Common, Surrey, TQ1659, 18.vi.1995, one female; and Esher Common, Surrey, TQ1362, 17.i.1998, two females sieved from mouldy *Formica rufa* L. (Hymenoptera: Formicidae) nest material; *Atomaria scutellaris* Mots. (Cryptophagidae), Pegwell Bay, Ramsgate, E. Kent, TR372640, 29.ix.1996, two males by searching at base of cliff; *Nephus quadrimaculatus* (Herbst) (Coccinellidae), Hackbridge, Surrey, TQ2866, 24.ix.1977, several by beating ivy-covered garden fence; *Anaspis septentrionalis* Champ. (Scraptiidae), Abernethy Forest NR, Easternness, NH998178, 16.vi.1996, one female beaten off pine *Pinus*, first Scottish record for over 100 years; *Saperda carcharias* (L.) (Cerambycidae), Grantown-on-Spey, Elgin, NJ0226, 23.viii.1995, one male beaten off aspen *Populus tremula* sapling at dusk; *Oberea oculata* (L.) (Cerambycidae), Cambs, vii.1998, recent larval borings in willow branch; *Longitarsus nigerrimus* (Gyll.) (Chrysomelidae), near Hurn, S. Hants, SZ19, 1996, a small colony, the first British record for over 60 years; *Bagous puncticollis* Boh. (Curculionidae), Thompson Common, W. Norfolk,

TL9396, 8.iv.1998, sieving sedge litter; *Ranphus oxyacanthae* (Marsh.) (Curculionidae), Ardrhu Onich, Westernness, NN0161, 16.viii.1995, several beating alder *Ahhus glutinosa* and rowan *Sorbus aucuparia*.

(3) A selection of Coleoptera from a flight-interception trap at Silwood Park, Berks, vi-viii.1998: *Choleva glauca* Britten (Leiodidae), *Catopidius depressus* (Murray) (Leiodidae), *Neuraphes talparum* Lokay (Scydmaenidae), *Eucomus duboisi* Mèq. (Scydmaenidae), *Hypomedon debilicornis* (Woll.) (Staphylinidae), *Xantholinus angularis* Gangl. (Staphylinidae), *Atheta parens* (Muls. & Rey) (Staphylinidae), *Euplectus bonvouloiri* Reitter (Pselaphidae), *E. duponti* Aubé (Pselaphidae), *E. infirmus* Raffay (Pseidiaphidae), *E. karsteni* (Reich.) (Pseidiaphidae), *E. kirbyi* Denny (Pselaphidae), *E. nanus* (Reich.) (Pselaphidae), *E. piceus* Mots. (Pselaphidae), *Trichonyx sulcicollis* (Reich.) (Pselaphidae), *Aulonothroscus brevicollis* (de Bonv.) (Throscidae), *Hylis olexai* (Palm), (Eucnemidae), *Lymexylon navale* (L.) (Lymexylidae), *Phalacrus brunnipes* Bris. (Phalacridae), *Latridius consimilis* Mann. (Latridiidae), *Synchita separanda* (Reitt.) (Colydiidae), *Anoplodera scutellata* (F.) (Cerambycidae).

BOWDREY, J. P. — Nests of a solitary bee *Megachile* sp. (Hymenoptera: Apidae, Megachilinae), constructed from yellow hollyhock *Althea* petals and lined with sections of rose *Rosa* leaves, collected from behind an outdoor security light at Mill End, Bradwell-on-Sea, Essex, TL9905, by Mr & Mrs T. White and brought to Colchester Museum for identification. After overwintering in a cool room around 60 *Cryptophagus populi* Paykull emerged during May 1998.

CUMMING, N. St. J. — Some recent notable Coleoptera from north-east Essex and south-east Suffolk. Carabidae: *Harpalus servus* (Duft.), Thorpeness, E. Suffolk, TM4760, 9.v.1998, under stones on upper beach area; *Odacantha melanura* (L.), Old Hall, N. Essex, TL9911, 24.viii.1986, reed litter in reed-bed; *Masoreus wetterhalli* (Gyll.), Colne Point, N. Essex, TM1012, 21.vi.1995, under beach debris; *Denetrias imperialis* (Germar), Old Hall, N. Essex, TL9612, 12.iii.1998, hibernating in *Typha latifolia* stems; *Lionychus quadrillum* (Duft.), Colne Point, N. Essex, TM1012, 10.iv.1997, running on sand on upper beach; *Microlestes minutulus* (Goeze), Fingringhoe, N. Essex, TM0419, 9.v.1997, on sparsely vegetated set-aside arable land; *Brachinus crepitans* (L.), Old Hall, N. Essex, TL9612, 8.v.1998, under concrete blocks; Silphidae: *Aclypea opaca* (L.), Sizewell, E. Suffolk, TM4761, 5.vii.1998, on sand above high water mark, also on a sandy track between arable crops; Anobiidae: *Caenocara bovistae* (Hoff.), Sizewell, E. Suffolk, TM4764, 16.ix.1998, emerged from earth-ball *Bovista plumbea*; *Caenocara* sp., Sizewell, E. Suffolk, TM4764, 24.ix.1998, emerged from earth-ball *Bovista plumbea* (much smaller than normal *C. bovistae* (1.5 mm) with piceous brown elytra); Cleridae: *Opilo mollis* (L.), Old Hall, N. Essex, TL9512, 14.ii.1998, under bark of elm infected with Dutch Elm Disease; Cucujidae: *Uleiota planata* (L.), Friday Wood, Colchester, N. Essex, TL9920, 11.ii.1998, under bark of a recently wind-blown oak; Colydiidae: *Synchita humeralis* (F.), Aldringham, E. Suffolk, TM4661, 17.vi.1998, on sawn birch log; *Cicones undatus* (Guér.), Friday Wood, Colchester, N. Essex, TL9920, 10.i.1998, under bark of dead fallen sycamore *Acer pseudoplatanus* infected with Sooty Bark Disease; Chrysomelidae: *Platenuaris braccata* (Scop.), Minsmere, E. Suffolk, TM4766, 1.vii.1998, on marsh mallow *Althea officinalis*; Curculionidae: *Notaris scirpi* (F.), Fingringhoe, N. Essex, TM0419, 9.ii.1998, hibernating in *Juncus* tussock; *Magdalis cerasi* (L.), Fingringhoe, N. Essex, TM0419, 9.v.1997, on silver birch *Betula pendula*; *Baris scolopacea* Germar, Old Hall, N. Essex, TL9512, 15.vii.1998, swept off sea wormwood *Seriphidium maritimum*, possibly new to N. Essex; *Trichosirocalus barnevillei* (Bris.), Colchester, N. Essex, TM0124, 16.vii.1997, swept off yarrow *Achillea millefolium*.

EVERSHAM, B. C. — Three scarce species of ground beetle (Carabidae) from man-made habitats near Peterborough. *Amara curta* Dej. and *Badister dilatatus* Chaud., Bainton Pits (a gravel-pit complex north of Peterborough), Cambs, 19.iv.1998 and 3.vi.1998; *Harpalus ruficollis* Sturm, Orton Pits, south of Peterborough, Cambs, 16.vi.1998.

EVERSHAM, B. C. & SHARPE, P. R. — Recent finds of scarce, rare or unusual ground beetles (Carabidae) at Pitsford Reservoir, Northants in 1998: *Blethisa multipunctata* (L.), *Bembidion quadripustulatum* Serv., *Pterostichus anthracinus* (Panz.), *P. gracilis* (Dej.), *Agonum piceum* (L.), *Badister unipustulatus* Bonelli, *Dromius angustus* Brullé.

HACKETT, D. — (1) A selection of scarce beetles. *Bembidion quadripustulatum* Serv. (Carabidae), Fryent Park, Middx, TQ389880, 30.vi.1996, on bare cracking clay beside pond; *Panagaeus bipustulatus* (F.) (Carabidae), Dagenham Brook, S. Essex, TQ373866, 9.ix.1998, under litter on river bank; *Ochthebius exaratus* Muls. (Hydraenidae), Rainham Marsh SSSI, S. Essex, TQ515812, 20.v.1998, in reed *Phragmites* litter in ditch; *Saprosites mendax* Black. (Scarabaeidae), Highgate Wood, Middx, TQ283887, 26.vi.1998, in low-level flight-interception trap; *Prionocyphon serricornis* (Müller, P. W. J.) (Scirtidae), Highgate Wood, Middx, TQ283887, 6.vii.1998, in low-level flight-interception trap; *Melasis huprestoides* (L.) (Eucnemidae), Highgate Wood, Middx, TQ283887, 3.vi.1998, ovipositing in dying hornbeam *Carpinus betulus*; *Malthinus frontalis* (Marsh.) (Cantharidae), Highgate Wood, Middx, TQ283887, 26.vi.1998, walking up oak *Quercus* trunk; *Ptinus subpilosus* Sturm (Ptinidae), Croft Castle, Hereford, 4.iv.1998, in sap mixture in hollow oak; *Korynetes caeruleus* (Degeer) (Cleridae), Rainham Marsh SSSI, S. Essex, TQ515812, 20.v.1998, in reed *Phragmites* litter in ditch; *Aplocnemus pini* Redtenb. (Melyridae), Highgate Wood, Middx, TQ283887, 13.v.1998, swept off oak; *Glischrochilus hortensis* (Fourc.) (Nitidulidae), Croft Castle, Hereford, 4.iv.1998, in sap mixture in hollow oak; *G. quadriguttatus* (F.) (Nitidulidae), Croft Castle, Hereford, 4.iv.1998, in sap mixture in hollow oak; *Pediacus dermestoides* (F.) (Cucujidae), Croft Castle, Hereford, 4.iv.1998, in sap mixture in hollow oak; *Silvanus bidentatus* (F.) (Silvanidae), Highgate Wood, Middx, TQ283887, 31.vii.1998, between sections of cut oak logs; *Oxytaenus variolosus* Dufour (Colydiidae), Highgate Wood, Middx, TQ283887, 19.x.1998, in Owen Hypogean Trap; *Tetratoma ancora* F. (Tetratomidae), Broxbourne Woods, 16.v.1998, beaten off dense honeysuckle *Lonicera*; *Abdera biflexuosa* (Curtis) (Melandryidae), Wolves Wood, S. Essex, 6.vi.1998, on coppice logs; *Phloiotrya vaudoueri* Muls. (Melandryidae), Highgate Wood, Middx, TQ283887, 22.vii.1998, in sap mixture trap; *Rhynchites cavifrons* Gyll. (Attelabidae), Wolves Wood, S. Essex, 6.vi.1998, beaten off oak *Quercus* near car park; *Rhynchites nanus* (Payk.) (Attelabidae), Black Park, Slough, Bucks, 18.vii.1998, beaten; *Rhynchites olivaceus* Gyll. (Attelabidae), Black Park, Slough, Bucks, 18.vii.1998, beaten.

(2) Progress of 'The Great Stag Hunt' organised by the Peoples Trust for Endangered Species. Display included a summary of the number of records received, draft maps, and a literature review by Andrew Tullet, University of East Anglia.

HALSTEAD, A. J. — (1) Some scarce or local Coleoptera taken in 1998. *Cicindela sylvatica* L. (Carabidae), Sopley Common, Hurn, Dorset, 2.vii.1998, on bare sandy soil; *Anomala dubia* (Scop.) (Scarabaeidae), Whitmoor Common, Surrey, 9.viii.1998, taken in flight; *Selatossomus bipustulatus* L. (Elateridae), Melcombe Park Wood, Melcombe Bingham, Dorset, 1.vii.1998; *Hylis olexai* Palm (Eucnemidae), Horsell Common, Surrey, 9.viii.1998, on dead standing pine; *Dermestes murinus* L. (Dermestidae), RHS Garden, Wisley, Surrey, 13.v.1998, on honeybee combs containing dead bee larvae; *Cryptolaemus montrouzieri* Muls. (Coccinellidae), RHS



Garden, Wisley, Surrey, 11.ii.1998, on an outdoor plant *Phormium tenax* infested with mealybug *Balanococcus diminutus*; *Donacia bicolor* Zsch. (Chrysomelidae), Merritton Heath, near Hurn Airport, Dorset, 2.vii.1998, swept by stream; *Cryptocephalus bipunctatus* (L.) (Chrysomelidae), Brentmoor Heath, West End, Surrey, 30.v.1998, swept; *Chrysolina americana* (L.) (Chrysomelidae), beside entrance to Pelham Clinton Building, Dinton Pastures CP, Winnersh, Berks, 21.ii.1998, found by K. Merrifield; *C. oricalcia* (Müller, O. F.) (Chrysomelidae), Warren Farm, Nonsuch Park, Surrey, 16.v.1998, swept; *Longitarsus dorsalis* (F.) (Chrysomelidae), Barley Mow Wood, Knaphill, Surrey, 19.iv.1998, on ragwort *Senecio* leaves; *Ottiorhynchus nodosus* (Müller, O. F.) (Curculionidae), The Hermitage near Dunkeld, East Perth, 7.ix.1998, under bark of conifer stump; *O. scaber* (L.) (Curculionidae), near Enochdhu, East Perth, 6.ix.1998, on *Solidago virgaurea* flower.

(2) A live specimen of the cellar beetle *Blaps mucronata* Latr. (Tenebrionidae), which had deformed elytra, found in a shed being used as an apple store at Ewdness near Bridgnorth, Shropshire.

HARMAN, T. W. — A specimen of *Agrilus pannonicus* (Pill. & Mitt.) (Buprestidae) taken in sunshine at Turville Heath, Bucks on 20.vii.1998.

HARVEY, M. C. — A specimen of *Prionus coriarius* (Cerambycidae), found dead by Mrs Shirley Scrivener near her house in Beaconsfield, Bucks, SU929905, 14.viii.1997 and posted to the exhibitor. The associated parasite *Megaselia giraudii* (Egger) (Diptera: Phoridae) subsequently emerged, and from these, two species of braconid wasps, *Dinotrema lineola* (Thoms.) and *Aphaereta minuta* (Nees) (Hymenoptera: Braconidae), were reared.

HENDERSON, M. — Some beetles from Hampshire. *Platycis minutus* (F.) (Lycidae), Chandler's Ford, 26.viii.1991, on nettle leaf near bracken on road verge; *Coccinella septempunctata* L. (Coccinellidae), Shawford, bank of River Itchen, 27.iv.1991, parasitised by *Perilitus coccinellae* (parasite emerged from ladybird and pupated on 28.iv.1991, imago wasp emerged 17.v.1991); *Mycetophagus atomarius* (F.) (Mycetophagidae), Barrow Door, New Forest, 28.iv.1991, under bark of dead wood; *Strangalia quadrifasciata* (L.) (Cerambycidae), Shawford, bank of River Itchen, 25.vii.1992, on flower of umbellifer; *Leptura scutellata* F. (Cerambycidae), Mark Ash Wood, New Forest, 17.vii.1998, flying in sunshine in beech wood; *Plateumaris sericea* (L.) (Chrysomelidae), Shawford, bank of River Itchen, 30.v.1998, abundant on yellow flag *Iris pseudacorus*; *Cassida murraea* L. (Chrysomelidae), Shawford, bank of River Itchen, 25.vii.1992, on common fleabane *Pulicaria dysenterica*.

HODGE, P. J. — Twenty species of Coleoptera from various locations in southern Britain. New vice-county records are marked with an asterisk (\*). *Paralister neglectus* (Germ.) (Histeridae), Denbigh, Talacre Warren, SJ1185, 27.iv.1998, crawling on fore dunes; *Zyras haworthi* Steph. (Staphylinidae), S. Hants, West Wood, Netley, SU4509, 19.vi.1998, swept off grass beneath ancient oak; \**Agrilus sulciicollis* Lac. (Buprestidae), Middx, Forty Hall, Enfield, TQ3398, 19.vii.1998, on trunk of dead standing oak; *Panspoeus guttatus* Sharp (Elateridae), N. Hants, Eelmoor Marsh SSSI, 28.vi.1998, swept from heathy woodland glade; \**Hylis olexai* (Palm) (Eucnemidae), E. Sussex, Sedlescombe, TQ7917, 15.vii.1998, on *Salix*; \**Dryophilus anobioides* Chev. (Anobiidae), S. Hants, Netley Common, SU4711, 27.iv.1998, on broom *Cytisus scoparius*; and West Wood, Netley, SU4509, 17.v.1998, on broom *Cytisus scoparius*; \**Lymexylon navale* (L.) (Lymexylidae), Middx, Forty Hall, Enfield, TQ3398, 19.vii.1998, flying around dead standing oak; *Colydium elongatum* (F.) (Colydiidae), S. Hants, West Wood, Netley, SU4509, 19.vi.1998, swept off grass beneath ancient oak; *Mordellistena pseudoparvula* Ermisch (formerly *M. parvuloides* Ermisch) (Mordellidae), E. Sussex, Pebsham Wood, Bexhill-on-Sea, TQ766093,

21.vi.1998, two males swept off creeping thistle *Cirsium arvense*; and W. Kent, Bewl Water, TQ683337, 26.vi.1998, male swept off thistles; *Grammoptera variegata* (Germ.) (Cerambycidae), S. Hants, West Wood, Netley, SU4409, 17.v.1998, on grass; *Bruchidius varius* (Olivier) (Chrysomelidae), Surrey, Colley Hill, Reigate, TQ248520, 12.vi.1998, female swept off red clover; *Cryptocephalus biguttatus* (Scop.) (Chrysomelidae), N. Hants, Eelmoor Marsh SSSI, 28.vi.1998, swept off *Erica tetralix*; \**Cassida sanguinosa* Suff. (Chrysomelidae), N. Somerset, Staithe, ST370294, 6.vi.1998, female on tansy *Tanacetum vulgare* on bank of R. Parrett; *Anthrribus fasciatus* (Forst.) (Anthribidae), Isle of Wight, Nunwell Estate, Brading, 21.v.1998, swept off grass under oak by M. Edwards; \**Bruchela rufipes* (Olivier) (Urodontidae), Cambs, Kennett Sand-pit, 19.ix.1998, on *Reseda lutea*; and Middx, Park Royal, 16.ix.1998, on *Reseda lutea*; *Cathormiocerus attaphilus* Bris. (Curculionidae), W. Cornwall, Predannack, SW666158, 19.ix.1998, in suction sample from cliff-top dominated by *Plantago coronopus*; *Tanymecus palliatus* (F.) (Curculionidae), Monmouth, Llangua, SO388254, swept near bank of R. Monnow; *Tropiphorus terricola* (New.) (Curculionidae), Monmouth, Llangua, SO388254, swept near bank of R. Monnow; *Lixus scabricollis* Boh. (Curculionidae), Dorset, East Fleet, Weymouth, SY6279, 4.iii.1998, on sea beet *Beta vulgaris* on edge of lagoon; \**Magdalis menmonia* (Gyll.) (Curculionidae), N. Hants, Eelmoor Marsh SSSI, 23.v.1998, male swept near pine plantation.

LEVEY, B. — 19 species of Buprestidae collected in the Algarve, Portugal between 3/9.v.1998. The following species were collected in open woodland of umbrella pine *Pinus pinea*, with both grass-rich and maquis-type vegetation, in the Parque Natural da Ria Formosa, Quinta de Marim, near Olhão. *Julodis onopordi fidelissima* Rosen., *Acmaeodera nigellata* Abeille, *Acmaeoderella moroderi* (Reitt.), *A. adspersula* (Ill.), *A. coarctata* (Lucas), *Anthaxia parallela* Castelnau & Gory, *A. scutellaris* Gene, *A. funerula* (Ill.), *A. nigrifolia* Ratz., *A. marmottani hispanica* Cobos, *Agrilus elegans* Muls. & Rey. Species collected at other localities were as follows; *Acmaeodera rubromaculata* Lucas, *A. nigellata* Abeille, *Acmaeoderella adspersula* (Ill.), *Anthaxia funerula* (Ill.), Praia Verde, W. of Villa Real, sand dunes with *Pinus pinea* woodland and understorey of *Lygos monosperma* (L.) (Papilionaceae); *Acmaeodera cylindrica* (F.), *Anthaxia scutellaris* Gene, 1km S. of Santa Catarina da Fonte de Bispo, flower-rich area at edge of orchard; *Acmaeodera nigellata* Abeille, *Anthaxia millefolii polychloros* Abeille, *A. parallela* Castelnau & Gory, *A. scutellaris* Gene, *A. funerula* (Ill.), *A. marmottani hispanica* Cobos, *A. nigrifolia* Ratz., 7 km E. of Monchique, flowery edge of pine wood; *Acmaeodera degener quattuordecimpunctata* (Villers), *Anthaxia funerula* (Ill.), *A. nigrifolia* Ratz., *Agrilus angustulus* (Ill.), *Trachys coruscus* Ponza, 10 km N. of Sao Bras de Alportel, in forest of cork oak *Quercus suber*; *Sphenoptera rauca* (F.), *Trachys coruscus* Ponza, Bensafirim, in flowery meadow; *Aphanisticus emarginatus* Ol., *Trachys coruscus* Ponza, Sierra de Monchique, Foia; *Acmaeoderella adspersula* (Ill.), Cape St Vincent, 5 km W. of Sagres, in heathland; *Anthaxia millefolii polychloros* Abeille, 3 km S. of Barranco Velho, in damp flowery meadow.

LEVEY, B. & PAVETT, P. M. — Two species of Coleoptera new to Britain from Wales. They were collected while surveying two Welsh parklands on behalf of the Countryside Council for Wales. *Bembidion* (*Pseudolimmaeum*) *inustum* Duval (Carabidae), Dinefwr Deer Park, Carmarthen, SN6122, and Llanover, Gwent, SO3108, vi.1996, single specimens collected in flight-interception traps; *Atomaria turgida* Er. (Cryptophagidae), Llanover, Gwent, SO3108, vi.1996, specimens collected in flight-interception trap at edge of *Nothofagus* and *Larix* plantation.

LEWIS, K. C. — Notable Coleoptera found in 1998 from the conservation area at the Royal Botanic Gardens, Kew, Surrey. Two aberrant specimens of *Harpalus azureus* (F.) (Carabidae), vi.1998, one in pitfall trap and one under bark; *Scybalicus oblongiusculus* (Dejean) (Carabidae), found outside conservation area, vi.1998, under beech bark; *Rhytidères plicatus* (Gy.) (Curculionidae), vii.1998, beaten off black walnut *Juglans nigra* (L.); *Otiorynchus parvicollis* (Ol.) (Curculionidae), vi.1998, swept from mixed grass and flora, the first British record.

LOTT, D. A. — (1) Beetles collected on 17.vi.1998 between 1400m and 1900m on Kráľova Hora in the Nizky Tatras in Slovakia. Carabidae: *Trechus latus* Putzeys, *T. striatulus* Putzeys, *Pterostichus foveolatus* (Duft.), *P. morio carpathicus* Kult, *P. pilosus* (Host), *Calathus metallicus* Dejean; Staphylinidae: *Philonthus mareki* Coiff., *Quedius subunicolor* Korge (= *unicolor* sensu Kr.), *Q. alpestris* (Heer), *Q. cincticollis* Kr., *Q. collaris* Er., *Aleochara verna* Say.

(2) Beetles collected on 29.vii.1998 in Sphagnum pools in an old cut-over peat bog in the national nature reserve of Lac de Remoray, 850m, in the Jura (department: Doubs), France. Staphylinidae: *Stenus excubitor* Er., *Acylophorus wagenschieberi* Kies. (new to France?); Scirtidae: *Cyphon kongsbergensis* Munster.

(3) Beetles collected in May and September 1998 using an underground pitfall trap (see Owen, 1995, Ent. Rec. J. Var. 107: 225–228) set by old coppice stools in ancient woodland, Launde Big Wood, Leics, SK70. Nitidulidae: *Epuraea fuscicollis* (Steph.); Rhizophagidae: *Rhizophagus parallelocollis* Gyll. (new to Leics).

(4) Saproxylous beetles collected in Sherwood Forest, Notts, SK66 (\* = no recent records from Notts, \*\* = new to Notts according to MS list by Sheila Wright). Scydmaenidae: \**Neuraphes plicicollis* Reitt., 12.viii.1998; *Microscydnum minus* (Chaud.), 12.viii.1998, \*\**Microscydnum nanus* (Schaum), 29.iv.1998; Pselaphidae: *Euplectus nanus* (Reich.), 12.viii.1998; *Euplectus punctatus tholini* Guill., 1.vi.1998; *Batrissodes venustus* (Reich.), 12.viii.1998; Nitidulidae: *Cryptarcha strigata* (F.), 29.iv.1998; Cryptophagidae: \*\**Atomaria morio* Kolenati, 1.vi.1998; Tenebrionidae: *Corticeus unicolor* Pill. & Mitt., 12.viii.1998; *Mycetochara humeralis* (F.), 1.vi.1998; Melandryidae: *Abdera quadrifasciata* (Curtis), 4.vii.1998; Seraptidae: *Anaspis septentrionalis* Champion, 4.vii.1998; Cerambycidae: *Saperda scalaris* (L.), 4.vii.1998; Chrysomelidae: *Cryptocephalus querceti* Suff., 1.vi.1998; Curculionidae: \**Trachodes hispidus* (L.), 29.iv.1998.

MENZIES, I. S. — Some scarce Coleoptera from Surrey. *Agrilus sinuatus* (Ol.) (Buprestidae), Hogsmill Stream, Berrylands, Surbiton, TQ200678, 19.vii.1997, four beaten off old hawthorn *Crataegus*; and Nonsuch Park, Cheam, TQ235640, 12.viii.1998, one beaten off hawthorn; *Uleiota planata* (L.) (Cucujidae), Bookham Common, TQ125561, 30.v.1998, 1.vi.1998 and 31.viii.1998, single examples under bark of oak logs; *Henosepilachna argus* (Geoff.) (Coccinellidae) (Plate 1, Fig. 3), a species new to Britain: West Molesey, TQ133678, 14.v.1997 and 1.viii.1997, single examples discovered by Alysia Menzies (the exhibitor's granddaughter) in her garden; and 1.xi.1997, nine beaten off ivy *Hedera* growing in the same garden (subsequently found in large numbers on ivy at Molesey Heath, TQ133673); *Rhyzobius chrysomeloides* (Herbst) (Coccinellidae), West Molesey, TQ133678, 6.xii.1997 and 12.x.1998, beaten off ivy *Hedera* and old hawthorn *Crataegus* in private garden; *Rhyzobius litura* (F.) (Coccinellidae), by River Mole, Molesey Heath, 8.xi.1998 [for comparison with *R. chrysomeloides*]; *Stethorus punctillum* (Weise) (Coccinellidae), West Molesey, TQ133678, 6.xii.1997 and 12.x.1998, beaten off ivy *Hedera* in private garden; *Nephus quadrimaculatus* (Herbst) (Coccinellidae), Bookham Common, TQ127560, 1.vi.1998, one beaten off ivy; *Grammoptera variegata* (Germar) (Cerambycidae), Bookham Common, TQ125564, 15.v.1998, one beaten

off hawthorn *Crataegus* blossom; Epsom Common, TQ183610, 25.v.1998, one beaten off oak *Quercus*; and White Downs, TQ124495, 17.vi.1998, one beaten off hazel *Corylus: Pogonocherus fasciculatus* (Degeer) (Cerambycidae), Wisley Common, TQ067587, 26.iv.1998, two specimens beaten off recently fallen scots pine *Pinus sylvestris* branch by Maxwell Barclay; *Donacia obscura* Gyll (Chrysomelidae), Thundry Meadows, Elstead, 7.viii.1995, normal golden-green coloured specimens were exhibited next to greenish-blue and dark blue examples (the exhibitor states that the blue colour is due to prolonged exposure to sunlight); *Chrysolina americana* (L.) (Chrysomelidae), outside Shell Building, York Road, London SE1 (VC 17: Surrey) TQ308799, 15.viii.1997, crushed specimen found on pavement, and 3.vi.1998, many adults (some teneral) on flower heads of lavender plants in formal flower bed; *Cryptocephalus nitidulus* F. (Chrysomelidae), White Downs, between TQ105487 (east) and TQ130497 (west), 4.vi.1998 (a typical specimen) and 28.viii.1998 (a very dark specimen with purple reflection), by beating birch *Betula* and hazel *Corylus: C. parvulus* Müller, O. F. (Chrysomelidae), Ashted Common, TQ167595, 23.v.1998, several beaten off birch *Betula*, single examples off hazel *Corylus* and hawthorn *Crataegus* blossom; *Pilemostoma fastuosa* (Schall) (Chrysomelidae), on the steep slope of Lamb's Leys, White Downs, TQ124495, 17.vi.1998, in large numbers on young ploughman's spikenard *Inula conyzica* plants; *Byctiscus betulae* (L.) (Atelabidae), Pigden, Ranmore Common, TQ124505, 20.ix.1992, one beaten off aspen *Populus tremula*; Bookham Common, TQ125564, 17.v.1998, one on aspen leaf; and Ashted Common, TQ166593, 23.vi.1998, one adult and several characteristic 'leaf-rolls' seen on hazel *Corylus*.

OWEN, J. A.—Some uncommon beetles. Carabidae: *Bradycellus csikii* Laczó, Wangford Warren, W. Suffolk, xii.1997, under stone on waste ground; *Lebia cyanocephala* (L.), Thursley, Surrey, iii.1998, amongst vegetation on the ground; Histeridae: *Halacritus punctum* (Aubé), Crymlyn Burrows, Glamorgan, iv.1998, in buried driftwood on beach; Staphylinidae: *Anotylus mutator* (Lohse), Lundy, N. Devon, vii.1998, in grass; *Euryporus picipes* (Payk.), Linton Loch, Roxburgh, iv.1998, shaken from thick moss; *Medon dilutus* (Er.), Richmond Park, Surrey, vii.1997, in trap at roots of old oak; *M. pociferus* (Peyron), Durdle Door, Dorset, vii.1998, in coarse shingle; Pselaphidae: *Euplectus punctatus tholini* Guillebeau, Richmond Park, Surrey, xii.1997, under bark of oak log; Rhizophagidae: *Rhizophagus oblongicollis* Blatch & Horner, Richmond Park, Surrey, xi.1997, in underground trap; Latridiidae: *Melanophthalma distinguenda* (Comolli), Lundy, N. Devon, vii.1998, in grass; *M. curticollis* (Mann.), Holkham, W. Norfolk, viii.1982, at roots of vegetation on sand; *M. suturalis* (Mann.), West Molesey, Surrey, xi.1997, overwintering in ivy; Colydiidae: *Oxyaemus variolosus* (Dufour), Richmond Park, Surrey, vii.1997, in underground trap; Mordellidae: *Mordellistena pseudoparvula* Ermisch (= *M. parvuloides* Ermisch), near Santon Downham, W. Norfolk, viii.1983, in malaise trap; Anthicidae: *Anthicus angustatus* Curtis, Durdle Door, Dorset, viii.1998, in dry sea weed on beach; *A. scoticus* Rye, Annan, Dumfries, viii.1998, among beach debris; *A. tristis* Schmidt, Weymouth, Dorset, vi.1992, in shingle near sea; Cerambycidae: *Prionus coriarius* (L.), Wimbledon, viii.1998, at MV light; *Tetropium castaneum* (L.), Loch Arkaig, Westerness, v.1998, under bark of spruce log; *Saperda populnea* (L.), Bookham, Surrey, vi.1997, beaten from aspen sapling; *S. scalaris* (L.), Struan, Mid Perth, reared from larva found v.1997, in *Salix* log; *S. carcharias* (L.), Speyside, viii.1998, beaten from aspen; Chrysomelidae: *Psylliodes luridipennis* Kuts, Lundy, N. Devon, vii.1998, off lundy cabbage *Coincya wrightii*; Curculionidae: *Otiorhynchus crataegi* Germar, West Molesey, Surrey, vi.1998, on lilac suckers.

PLANT, C. W. — (1) Water beetles from field drain at Bourne, S. Lincs, 9.ix.1998: *Scarodytes halensis* (F.) (Dytiscidae), *Anacaena bipustulata* (Marsh.) and *Laccobius sinuatus* Mots. (Hydrophilidae).

(2) Water beetles from fire pond at Elstow Storage Depot, Beds, 23.ix.1998: *Haliphys heydeni* Wehncke (Haliplidae), *H. laminatus* (Schall.) (Haliplidae), *Hydroglyphus pusillus* (F.) (Dytiscidae), *Graptodytes granularis* (L.) (Dytiscidae), *Ilybius subaeneus* Er. (Dytiscidae), *Anacaena bipustulata* (Marsh.) (Hydrophilidae), *Laccobius sinuatus* Mots. (Hydrophilidae), *Enochrus melanocephalus* (Ol.) (Hydrophilidae), *Helochares lividus* (Forst.) (Hydrophilidae).

(3) Water beetles from Rainham Marshes, S. Essex, 12.x.1998: *Agabus conspersus* (Marsh.) (Dytiscidae), *Rhantus frontalis* (Marsh.) (Dytiscidae).

(4) Some notable terrestrial beetles captured during 1998. *Colenis immunda* (Sturm) (Leiodidae), Therfield Heath, Herts, 16.ix–11.x.1998, pitfall trap, chalk grassland; *Quedius brevicornis* (Thoms.) (Staphylinidae), Froxen Copse, Arne, Dorset, 8.vi.1998, on oak *Quercus* infested by *Cossus* (Lepidoptera: Cossidae); *Gyrophana jovi* Wendeler (Staphylinidae), Monkfield Wood, Cambs, vi.1998, Malaise trap; *Atheta pervagata* Benick (Staphylinidae), Therfield Heath, Herts, 16.ix–11.x.1998, pitfall trap, calcareous grassland at beech wood margin; *Cryptarcha imperialis* (Ol.) (Nitidulidae), Froxen Copse, Arne, Dorset, 8.vi.1998, on *Cossus* (Lepidoptera: Cossidae) infested oak *Quercus*; *Olibrus flavicornis* (Sturm) (Phalacridae), old hospital site, Bexley, W. Kent, 8–15.vii.1998, pan traps; *Hallomenus binotatus* (Quens.) (Melandryidae), Monkfield Wood, Cambs, vi.1998, malaise trap; *Mordellistena ?acuticollis* Ermisch (Mordellidae), old hospital site, Bexley, W. Kent, 8–15.vii.1998, pan traps; *M. brevicauda* (Boh.) (Mordellidae), Bishops Bowl Lakes, Warks, 10.vii.1998; *Bruchus rufipes* Herbst (Chrysomelidae), Bexley Gun Club sand pit, W. Kent, 5.vi.1998; *Cryptocephalus aureolus* Suff. (Chrysomelidae), Blackbushe Aerodrome, N. Hants, 5.vi.1998; *Chrysolina oricalcia* (Müller, O. F.) (Chrysomelidae), Tottenham Hale, Middx, 20.ix.1995; *Strophosoma faber* (Herbst) (Curculionidae), Blackbushe Aerodrome, N. Hants, 9.vii.1998.

SALISBURY, A. — Some noteworthy Coleoptera found in the RHS Garden, Wisley, Surrey in 1998. *Gnathoncus buyssoni* Auzat (Histeridae), Stage 4 Arboretum, TQ0658, 5.viii.1998, several by sieving nest material containing small mammal bones from hollow oak; *Agrilus laticornis* (Ill.) (Buprestidae), Wildlife area, River Wey embankment, TQ0659, 24.vii.1998, swept; *Dorcatoma flavicornis* (F.) (Anobiidae), Stage 4 Arboretum, TQ0658, 31.vii.1998, beaten off moribund oak twig; *D. serra* Panz. (Anobiidae), Stage 4 Arboretum, TQ0658, 5.viii.1998, three specimens found in large, recently fallen, hollow oak branch by A. J. Halstead; *Ptinus sexpunctatus* Panz. (Ptinidae), Laboratory Building, TQ066583, 30.vi.1998, among herbarium specimens; *Lymexylon navale* L. (Lymexylidae), Battleston Hill, TQ066581, 16.vii.1998, alighted on the exhibitor's hair in a wooded part of the garden.

SMITH, M. — A selection of uncommon Coleoptera taken in 1998. *Graptodytes bilineatus* (Sturm) (Dytiscidae), Vimpennys Lane, ICI Severnside Estate, Easter Compton, S. Glos, 23.vi.1998; *Hydaticus seminiger* (Degeer) (Dytiscidae), Wildmoor Heath, Crowthorne, Berks, 10.vi.1998; *Onthophagus vacca* (L.) (Scarabaeidae), ICI Severnside Estate, Pilning, S. Glos, 3.vi.1998; *Anomala dubia* (Scop.) (Scarabaeidae), Englemere Pond, Bracknell, Berks, 21.vi.1998; *Gnorimus nobilis* (L.) (Scarabaeidae), Peppard Common, Rotherfield Peppard, Oxford, 5.vii.1998, ?new to Oxon; *Ampedus sanguinolentus* (Schrank) (Elateridae), Wildmoor Heath, Crowthorne, Berks, 13.v.1998; *Coccinella magnifica* Redt. (Coccinellidae), Englemere Pond, Bracknell, Berks, 8.v.1998; *Variimorda villosa* (Schrank) (Mordellidae), River Nadder, Salisbury, Wilts, 21.vi.1998; *Grammoptera ustulata* (Schall.) (Cerambycidae), Blackwater

Reach Copse, Sandhurst, Berks, 16.v.1998; *Platystomos albinus* (L.) (Anthribidae), Englemere Pond, Bracknell, Berks, 8.v.1998.

WHITTON, P.—(1) Carabidae taken in flood refuse from the River Cherwell, Sparsey Bridge, Oxford SP518119, in April 1998. *Trechus micros* (Herbst), *Tachys parvulus* (Dejean), *Pterostichus macer* (Marsh.), *Harpalus ardosiacus* (Luts.), \**Anisodactylus binotatus* (F.) and *Acupalpus consputus* (Duft.).

(2) Other Carabidae collected during 1997 and 1998. *Nebria livida* (L.), Mundesley, E. Norfolk, TG285383, 26.viii.1997, at base of cliffs; *Trechus rubens* (F.), Grisedale, Mid-west York, SD922774, 5.vi.1998, under stone; *Bembidion fluviatile* Dejean, Gressingham, N. Lincs, SD581699, 5.vi.1998, bank of River Lune; *B. nigropiceum* (Marsh.), Whitesand Bay, E. Cornwall, SX414505, 13.vii.1998, from beach shingle; \**B. quadripustulatum* Serv., Otmoor, Oxford, SP582143, 12.iv.1997, on bare mud in drainage ditch; *Agonum ericeti* (Panz.), Burns Beck Moss NR, Westmorland, SD594874, 7.vi.1998, in *Sphagnum*; *Harpalus serripes* (Quens.), West Bay, Dorset, SY473897, 17.ix.1997, at base of sandstone cliff; *H. tenebrosus* (Dejean), Whitesand Bay, E. Cornwall, SX414505, 19.vii.1998, from sandy cliff base.

Species marked with an asterisk (\*) are possibly new vice-county records.

WRIGHT, S.—Some beetles found in imported timber products—from the collections at Nottingham Natural History Museum, Wollaton Hall.

(1) A specimen of *Anaplophora glabripennis* Motsch., (Cerambycidae) taken to the RSPCA at Leicester in vii.1998 after being found at a local factory in a wooden packing case from China. It survived for about a week and featured on the 'Pet Rescue' programme (Channel 4 on 22.ix.1998) when the specimen was donated to Nottingham Natural History Museum.

(2) An unidentified longhorn beetle (Cerambycidae) and the leg of a piano stool from which it emerged. The leg was brought into the museum after the owner heard rasping sounds from within and noticed a small pile of sawdust accumulating on the living room carpet. The stool had been purchased in the UK 14 years previously but the origin of the wood used in its construction is unknown. A pupa was extracted from the leg and the beetle emerged a week later.

(3) An aboriginal carving of a snake, purchased at Ayer's Rock, Australia on 22.viii.1983 together with a specimen of *Bostrychus jesuita* (Bostrichidae) which emerged from it in ix.1985, whilst sitting on its owner's mantelpiece in Nottingham. The carving was donated to Nottingham Natural History Museum, where loud munching sounds could be heard emanating from within for about a year afterwards but no more beetles emerged and the noises eventually ceased.

## HEMIPTERA

ALEXANDER, K. N. A., FOSTER, A. P. & GODDARD, D. G.—A selection of the more interesting bugs found during the work of the National Trust's Biological Survey Team in 1998: *Odontoscelis lineola* Rambur (Scutelleridae), Frensham Common, Surrey, rabbit-grazed turf beside sandy path, 15.vii.1998; *Odontoscelis fuliginosa* (L.) (Scutelleridae), Sutton Hoo, East Suffolk, pitfall traps, vi–vii, 1998; *Dicranocephalus medius* (Mulsant & Rey) (Stenocephalidae), Randwick, Glos., suction sample, 25.x.1998; *Aphanus rolandri* (L.) (Lygaeidae), Woolacombe, N. Devon, 19.v.1998; *Dufouriellus ater* (Dufour) (Cimicidae), Castle Ward Park, Co. Down, adult with nymphs beneath sappy bark on recently fallen oak trunk, 22.viii.1998, new to Ireland; *Globiceps juniperi* (Reuter) (Miridae), Ludshott Common, N. Hants., sweeping regenerating *Calluna/Erica* heath, 7.vii.1998.

BADMIN, J. S.—Exhibit describing life cycle and behaviour of *Issus coleoptratus* (Fab.) (Issidae).

BOWDREY, J. P.—*Stictopleurus punctatonervosus* (Goeze) (Rhopalidae), West Bergholt Heath, Essex, TL9527, 23.ix.1997, new county record. Other specimens: Colchester, post-industrial site, 1997, West Mersea, grassy bank, 1998.

HODGE, P. J.—Two species of Hemiptera from Middlesex (both are new county records). *Deraeocoris flavilinea* (Costa) (Miridae), Forty Hall, Enfield, TQ3398, 19.vii.1998, beaten off aphid infested sycamore foliage; *Fieberiella* sp. (Cicadellidae), Park Royal, TQ1982, 16.ix.1998, beaten off cherry saplings, the first confirmed British record of the genus (Plate 2, Fig. 6).

KNILL-JONES, S. A.—*Enoplops scapha* (Fab.) (Coreidae), Freshwater, Isle of Wight, 13.x.1998.

SHARDLOW, M. E. A.—*Hydrometra gracilentata* Horvath (Hydrometridae), Catfield Fen, Norfolk, 1998, first British record for nine years; *Hydrometra stagnorum* (L.) (Hydrometridae) Catfield Fen, Norfolk, 1998, Dungeness, Kent, 1998.

#### HYMENOPTERA

ARCHER, M.—(a) Some aculeate bees and wasps from France, Hungary and Crete. Eumenidae: female *Discoelius zonatus* (Panz.), 12.viii.93, near Tousac, Dordogne, France; male *Alastor atropos* Lepeletier, 21.vii.95, Pont d'Alleyras, Haute Loire, France; female *Pterocheilus phaleratus* (Panz.), 19.vii.95, near Naussac, Haute Loire, France; female *Euodynerus dantici* (Rossi), 24.viii.79, Pornichet, Loire-Atlantique, France; female *Allodynerus rossi* (Lepeletier), 19.viii.87, Dirac, Angoulême, Charente, France; female *Eumenes coronatus* (Panz.), 29.viii.85, Menil, near Château-Gontier, Sarthe, France, and male, 24.viii.87, Sergeac, Montignac, Dordogne, France; female *Eumenes mediterraneus* Kreichbaumer, 9.iv.96, and male, 14.iv.96, Paliochora, Crete; female *Odynerus albopictus* de Saussure, 6.iv.88, near Anatoli, Crete, and male, 8.iv.88, Makriyalas, Crete; male and female *Odynerus reniformis* (Gmel.), 14.v.97, Lajosmizse, Hungary. Chrysididae: female *Parnopes grandior* (Pall.), 25.vii.95, Sonzay, Maine-et-Loire, France and male, 21.viii.87, Musset, Gironde, France; female *Holopyga amoenula* Dahlbom, 30.vii.90, near Montendre, Charente-Mer, France, and male, 1.viii.90, La Reole, Gironde, France; female *Chrysis comparata* Lepeletier, 14.viii.93, Castelnaud, Dordogne, France; male *Chrysis dichroa* Dahlbom, 6.iv.88, near Anatoli, Crete; *Hedychridium valesiense* Linsenmaier, 25.vii.95, Sonzay, Maine-et-Loire, France; *Hedychridium flavipes* (Evers.), 26.vii.95, Sonzay, Maine-et-Loire, France. Colletidae: female *Hylaeus difformis* Evers., 5.viii.83, Aizier, Forêt de Brotonne, Seine-Maritime, France, and male, 20.vii.95, Manisfrol d'Allier, Haute-Loire, France; female *Hylaeus variegatus* (F.), 24.vii.95, near Boussay, Indre-et-Loire, France; female *Hylaeus sinuatus* (Schenck), 14.viii.93, Castelnaud, Dordogne, France; female *Hylaeus brachycephalus* Morawitz, 14.viii.93, St Cernin de l'Herm, Dordogne, France.

(b) Some British aculeate wasps and bees from 1997. Chrysididae: *Hedychridium cupreum* (Dahlbom), 10.vii.97, Sandscale Haws, Cumbria; female *Hedychrum niemelai* Linsenmaier, 2.ix.97, Broom Hill, Essex; female *Chrysis hellani* Linsenmaier, 23.vii.97, West Stow Country Park, Breckland. Eumenidae: female *Microdynerus exilis* (H.-S.), 23.vii.97, West Stow Country Park, Breckland. Sphecidae: male *Ectemnius sexcinctus* (F.), 5.vii.97, Lindrick Common, S. Yorks.; female *Podalonia affinis* (Kirby), 29.v.97, Hartlebury Common, Worcs.; female *Argogorytes fargei* (Shuck.), 18.vi.97, Reighton Cliffs, N. Yorks.; female *Philanthus triangulum* (F.),

20.vii.97, Rauceby Warren, Lincs. Apidae: female *Colletes floralis* Evers., 10.vii.97, Sandscale Haws, Cumbria; male *Andrena argentata* Smith, 22.vii.97, Roydon Common, Norf.; male *Andrena nigrospina* Thom., 29.v.97, Highgate Common, Staffs.; male *Andrena ocreata* (Christ), 29.v.97, Hednesford Hills, Cannock Chase, Staffs.; female *Andrena tibialis* (Kirby), 16.iv.97, Hartlebury Common, Worcs.; female *Lasioglossum quadrinotatum* (Kirby), 16.iv.97, Devil's Spittleful, Worcs.; male *Lasioglossum pauperatum* (Brullé), 2.ix.97, Broom Hill, Essex; female *Melitta haemorrhoidalis* (F.), 2.viii.97, Cheswick Dunes, Northumbria; female *Megachile leachella* Curt., 23.vii.97, Rampart Field, Breckland; male *Nomada fulvicornis* F., 20.vii.97, Kirkby Moor, Lincs.; male *Psithyrus rupestris* (F.), 17.vi.97, Brayton Barff, S. Yorks.

BOWDREY, J. P.—A female of the RDB1 sphecid wasp, *Cerceris quadricincta* (Panz.) taken 20.vii.96 on a sunny bank behind the Roman Wall in Castle Park, Colchester, Essex. It was found frequently in Colchester up to about 1920 when it was thought to have died out.

COLLINS, G. A.—Some RDB aculeate bees and wasps recorded in 1998, mostly in Surrey. Chrysididae: *Hedychrum niemelai* Linsenmaier, 20.vii.98, Horsell Common, Woking, Surrey; *Chrysogona gracillima* (Förster), 5.viii.98, on carrot flower, Spur Hill, Mytchett, Surrey. Pompilidae: *Cryptocheilus notatus* (Rossius) (Plate 2, Fig. 3), 19.viii.98, Bagmoor Common, Surrey. Apidae: *Andrena ferox* Smith, F. (Plate 2, Fig. 2), 7.v.98, Brockenhurst, S. Hants. (not recorded in the New Forest since 1966); *Andrena hattorfiana* (F.), 16.vii.98, Westcott Downs, Surrey; *Sphecodes niger* Sichel, 23.ix.98, Box Hill, Surrey; *Sphecodes spinulosus* von Hagens, 29.v.98, Westcott Downs, Surrey (new to the county).

HALSTEAD, A. J.—Some sawflies and aculeate wasps and bees taken in 1998 in Surrey, Dorset, Herts. and Middx. Pamphiliidae: female *Pamphilus varius* (Lepelletier), 28.viii.98, swept, Wisley Common, Surrey. Cimbicidae: female yellow form of *Cimbex femoratus* (L.), 3.vii.98, swept from birch, Winfrith Heath, Dorset. Tenthredinidae: female *Pachyprotasis variegata* (Fall.), emerged 10.v.98, bred from larvae on foxglove (*Digitalis* × *nertonensis*), RHS Garden, Wisley, Surrey. Vespidae: worker *Vespa crabro* L., 6.viii.98 from a nest in a building at RHS Garden, Wisley, Surrey—this is the first nest there for at least 26 years. Sapygidae: male *Sapyga quinquepunctata* (F.), 17.v.98, on a pine stump, Brentmoor Heath, near West End, Surrey. Tiphiidae: female *Tiphia minuta* V. d. Lind., 1.vii.98, swept, Melcombe Park Wood, near Melcombe Bingham, Dorset. Mutillidae: male *Mutilla europaea* L., 3.vii.98, in sand quarry near Binnegar, Dorset. Eumenidae: female *Pseudepipona herrichii* (Saussure), 4.vii.98, at nest site, Hartland Moor, Dorset. Chrysididae: *Omalius violaceus* (Scop.), 17.v.98, on a pine stump, Brentmoor Heath, near West End, Surrey; *Chrysis viridula* L., 21.vi.98, swept, Brentmoor Heath, near West End, Surrey; male *Cleptes semiauratus* (L.), 1.vi.98, swept, Buckingham Palace Garden, London SW1. Apidae: female *Melecta albifrons* (Forst.), 4.v.98, on old brick wall with nesting *Anthophora plumipes* (Pall.), Royston, Herts.; female *Heriades truncorum* (L.), 29.viii.98, nesting in a drilled fence post, Knaphill, Surrey.

HARVEY, M. C.—Some scarce aculeate bees and a spider wasp taken in 1998. Pompilidae: *Priocnemis coriacea* Dahlbom, 4.v.98, in a rural garden, Upper Basildon, Berks. Apidae: female *Andrena hattorfiana* (F.), 22.viii.98, on field scabious flower, *Knautia arvensis*, Hartslock SSSI, Oxon; *Sphecodes crassus* Thom., 30.viii.98, Swain's Wood SSSI, S. Bucks.; *Osmia bicolor* (Schr.), 25.v.98, North Unhill Bank, Berks.

HAWKINS, R. D.—Some Hymenoptera, mostly aculeates, taken during 1998 at Bagmoor Common (SU9242), a reserve of the Surrey Wildlife Trust. Management to



restore heathland has created some excellent habitats for nesting Hymenoptera. Cimbicidae: female *Zaraea fasciata* (L.), 19.vi.98. Chrysididae: female *Chrysis fulgida* L. (Plate 2, Fig. 5), 19.vi.98, at stump of dead birch (see Miles, 1998, *Br. J. Ent. Nat. Hist.* 11: 113); *Chrysis helleni* Linsenmaier, 29.viii.98, at root mound of wind-blown pine; *Chrysis viridula* L., 19.vii.98 and 14.viii.98 (male), at root mound. Tiphidae: female *Methocha ichneumonoides* Lat., 19.vi.98, on bare sand of 'scrape' (area with turf removed). Pompilidae: *Anoplius viaticus* (L.), 4.v.98, one female of two, very active on mounds; *Priocnemis coriacea* Dahlbom, 4.vi.98, on bare sand of 'scrape'; *Cryptocheilus notatus* (Rossius), 19.vii.98, at root mound, 29.viii.98, on bare sand of 'scrape'. Vespidae: *Dolichovespula saxonica* (F.), 2.viii.98, at flowers of alder buckthorn, *Frangula alnus*. Sphecidae: female *Philanthus triangulum* (F.), 14.viii.98, at flowers of heather, *Calluna vulgaris* (not nesting at this site). Xylocopidae: female *Ceratina cyanea* (Kirby), 15.v.98, at flowers of ground ivy, *Glechoma hederacea*.

HODGE, P. J.—Some aculeate Hymenoptera mostly taken in S.E. England in 1998. Chrysididae: *Chrysis helleni* Linsenmaier, 24.vi.98, swept from south-facing chalk grassland, Ranmore Common, Surrey; *Chrysogona gracillima* (Först.), on trunk of dead lime tree (*Tilia*) and *Cleptes semiauratus* (L.), beaten off oak, both 31.vii.98, by Turkey Brook, Forty Hall, Mickleham, Surrey; *Chrysura radians* (Har.), 24.vi.98, on a log, White Hill, Mickleham, Surrey; *Omalus aeneus* (F.) and *O. puncticollis* (Mocsary), 28.vi.98, swept from willow (*Salix*), Wicken Fen, Cambs. Sphecidae: male *Allysson unicoloris* (F.), 25.vii.98, swept from a steep south-facing clay bank, Claylands Nature Reserve, Bishop's Walton, S. Hants., and a female of this species beaten from grey poplar *Populus canescens* near recently disturbed grassland, 16.ix.98, Park Royal, Middx.; female *Stigmus pendulus* (F.), 20.vii.98, one of many females nesting in a dead pine trunk, Forty Hall, Middx.

MARSHALL, T. & V.—Some Australian ants. An "empty" shell of the mollusc *Thersites fraseri* was collected August 1997 on the beach at Nelly Bay, Magnetic Island, off the coast of Queensland, Australia. Four months later back in Britain the shell was found to contain a colony of an unidentified ant with a queen and 12 workers. Also shown from the Queensland rain forest were specimens of the green tree ant (*Oecophylla smaragdina*), the golden or golden bum ant (*Polyrachis* sp.) and an unidentified species.

ROBERTS, S. M.—(a) A selection of aculeate Hymenoptera from various localities in England, Scotland and Wales. Chrysididae: female *Omalus violaceus* (Scop.), 19.viii.98, Feltham, Middx. Pompilidae: male *Ceropales maculata* (F.), 13.viii.98, Kenfig Burrows, Glam.; female *Homonotus sanguinolentus* (F.), emerged 2.vii.98 from host spider's egg nest collected 20.vii.97, Bloxworth Heath, Dorset, also a male collected under similar circumstances 24.vii.98 and emerged 14.viii.98, Talbot Heath, Dorset. Eumenidae: female *Pseudepipona herrichii* (Saussure), 18.vi.98, Hartland Moor, Dorset, and male, 11.vii.97, Bloxworth Heath, Dorset. Tiphidae: female *Tiphia femorata* F., 13.viii.98, Kenfig Burrows, Glam. Sphecidae: male *Crossocerus walkeri* (Shuck.) and female *Pemphredon lugubris* (F.), 25.viii.97, Ancrum, near Melrose, Rox.; female *Ectemnius dives* (Lepeletier & Brullé), 20.vii.98, Feltham, Middx.; female *Ectemnius sexcinctus* (F.), 7.viii.98, Salisbury, Wilts.; female *Mimumesa littoralis* (Bond.), 13.viii.98, Kenfig Burrows, Glam.; male *Philanthus triangulum* (F.), 11.viii.98, Margam Moors, Glam. Vespidae: male *Vespa rufa* (L.), male and worker *Dolichovespula norvegica* (F.) and male *Dolichovespula sylvestris* (Scop.), 28.viii.97, Hartwoodmyres, near Selkirk, Selk.; worker *Vespa rufa* (L.), 28.viii.97, Ettrickbridge, Selk.; male *Dolichovespula saxonica* (F.), 28.vii.98, Fovant Down, Wilts. Apidae: male and female *Colletes succinctus* (L.), 30.viii.98, Rashiel, near Langholm, Dumf., also male, 18.vii.98, Feltham, Middx.; female *Colletes*

*fodiens* (Geoff. in Fourc.), 13.viii.98, Margam Moors, Glam.; female *Colletes marginatus* Smith, 13.viii.98, Kenfig Burrows, Glam., also female, 11.viii.98, Margam Moors, Glam.; male and female *Halictus rubicundus* (Christ), 25.viii.97, Ancrum, near Melrose, Rox.; female *Lasioglossum cupromicans* (Pérez), 30.viii.98, Rashiel, near Langholm, Dumf.; *Lasioglossum fratellum* (Pérez), female 30.viii.98, male 3.ix.98, Rashiel, near Langholm, Dumf., also female 25.viii.97, Ancrum, near Melrose, Rox., male 28.viii.97, Ettrickbridge, Selk.; male *Lasioglossum rufitarse* (Zett.), 28.viii.97, Ettrickbridge, Selk.; female *Lasioglossum brevicorne* (Schenck), 25.v.98, Parley Heath, Dorset; female *Andrena fuscipes* (Kirby), 30.viii.98, Rashiel, near Langholm, Dumf.; female *Andrena nigriceps* (Kirby), 13.viii.98, Kenfig Burrows, Glam.; female *Andrena tibialis* (Kirby), 13.iv.98, Coombe Bissett Down, Wilts.; male and female *Melitta leporina* (Panz.), female *Sphecodes crassus* Thom., 18.vii.98 and male *Sphecodes niger* Sichel, 19.vii.98, Feltham, Middx.; female *Sphecodes scabricollis* Wesm., 5.vii.98, Uddens, Dorset; female *Nomada rufipes* F., 30.viii.98, male 31.x.98, Rashiel, near Langholm, Dumf.; female *Epeolus cruciger* (Panz.), 13.viii.98, Kenfig Burrows, Glam.; male *Megachile maritima* (Kirby), male *Coelioxys mandibularis* Nylander, male and female *Coelioxys conoidea* (Ill.), 13.viii.98, Crymlyn Burrows, Glam., also female *C. conoidea*, 20.vii.98, Feltham, Middx.; worker *Bombus terrestris* (L.), male *Bombus hortorum* (L.), 26.vii.97, Lindisfarne, Northumb.; male *Bombus bohemicus* Seidl, 25.viii.97, Ancrum, near Melrose, Rox., also male 26.viii.97, Lindisfarne, Northumb.; male *Bombus campestris* (Panz.), 25.viii.97, Ancrum, near Melrose, Northumb., also male 13.viii.98, Crymlyn Burrows, Glam.; male *Bombus muscorum* (L.), 26.viii.97, Lindisfarne, Northumb., also male, 11.viii.98, Margam Moors, Glam.; male *Bombus humilis* Ill., 13.viii.98, Kenfig Burrows, Glam.; also male, 11.viii.98, Margam Moors, Glam.; male *Bombus sylvorum* (L.), 13.viii.98, Kenfig Burrows, Glam.; male *Bombus soroensis* (F.), 19.ix.98, Great Cheverell Hill, Wilts. (*leg.* M Edwards).

(b) A display of distribution maps of aculeate Hymenoptera for inclusion in Part 3 of the Provisional Atlas of British Aculeates due for publication in 2000.

SHARDLOW, M. E. A. — Some rare and unusual aculeates, mostly ants, recorded on RSPB reserves in 1997 and 98. Formicidae: *Leptothorax tuberum* (F.), *L. interruptus* (Schenck), *Tetramorium caespitum* (L.), 1998, Dungeness, Kent; *Leptothorax nylanderii* (Först.), 1998, Wolves Wood, Essex; *Formica exsecta* Nylander, *F. lugubris* Zett., *Leptothorax acervorum* (F.), *Myrmica sulcinodis* Nylander, 1998, Abernethy, Fife. Mutillidae: *Mutilla europaea* L., 1997, Havergate Island, Suff.

SMITH, M. — Some uncommon bees and wasps mostly taken in 1998. Chrysididae: *Omalus violaceus* (Scop.), 25.viii.98, Evercreech, Som. Eumenidae: *Eumenes coarctatus* (L.), 30.vi.98, Wildmoor Heath, Crowthorne, Berks. Sphecidae: *Ectemnius ruficornis* (Zett.), 22.vi.98, Englemere Pond, Bracknell, Berks.; *Nysson dimidiatus* Jurine and *N. trimaculatus* (Rossius), 12.viii.98, disused railway shunting yard, Radstock, Som. Apidae: *Hylaeus signatus* (Panz.), 20.vii.97, on *Reseda* flowers, River Nadder, Salisbury, Wilts.; *Andrena argentata* Smith, F., 30.vi.98, and its cleptoparasite *Nomada baccata* Smith, F., 6.viii.98, Wildmoor Heath, Crowthorne, Berks.; *Stelis punctulatissima* (Kirby) and *Heriades truncorum* (L.) — possibly first county record for the latter, 2.viii.98, Sonning Common, Oxon; *Bombus (Psithyrus) rupestris* (F.), 18.vii.98, Nettlebed, Oxon.

UFFEN, R. W. J. — (a) Some Symphyta, bees and wasps new to the Hertfordshire list or of local interest. Xiphydriidae: female *Xiphydria prolongata* (Geoff. in Fourc.), 29.viii.98, on a fence post, Tyttenhanger sandpit, Colney Heath, Herts. Tenthredinidae: male *Athalia rosae* (L.), 31.viii.98, Therfield Heath, Royston, Herts. — this migrant species was of widespread occurrence in 1998 and was frequently seen near

the Dorset coast during the Dipterists/Hymenopterists' week 28.vi-3.vii. Chrysididae: *Chrysogona gracillima* (Först.), 15.viii.98, two females from a water trap on willow firewood, Smallford, St. Albans, Herts.; female *Hedychridium coriaceum* (Dahlbom), 10.viii.98, on a path with *Lindenius panzeri* (V. d. Lind.) nests, (*L. albilabris* (F.) may also be present), Aldenham golf course, Herts. Pompilidae: female *Anoplus nigerrimus* (Scop.), 13.viii.98, running among cut branches on the ground, Smallford, St. Albans, Herts.—previously erroneously recorded from Letchworth, Herts. by Ray Palmer before *A. concinnus* (Dahlbom) was recognised as British; *Priocnemis agilis* (Shuckard), female 12.viii.98 on carrot flower, male 15.viii.98 in a water trap, Smallford, St. Albans, Herts.; female *Pompilus cinereus* (F.), 29.viii.98, Tyttenhanger sandpit, Colney Heath, Herts. Sphecidae: male *Astata boops* (Schr.), 29.viii.98 (female also seen nesting in vertical soil face of oak stump), Tyttenhanger sandpit, Colney Heath, Herts; female *Gorytes quadrifasciatus* (F.), 2.ix.98, Commons Fen, Welwyn Garden City, Herts.; *Spilomena troglodytes* (V. d. Lind.) running over leaves in the exhibitor's garden, Welwyn, Herts.; missing from the exhibit but recorded at Smallford, Herts., 15.viii.98, on a carrot flower, a male of the nationally scarce *Alysson lunicornis* (F.). Vespidae: worker *Dolichovespula saxonica* (F.), 24.vii.98, from a nest in a felled tree, Hatfield Park, Herts. Apidae: male *Hylaeus signatus* (Panz.), 22.vii.98, on flowers of *Matricaria inodora* and *Campanula ?latifolia* in a public garden, Welwyn Garden City, Herts.—no sight of females or their preferred pollen source, *Reseda*; female *Hylaeus cornutus* Curt., 12.viii.98, on a carrot flower, Smallford, St. Albans, Herts.; *Melitta tricineta* (Kirby), first record for mid-Herts. of this bee associated with *Odontites*, males 12.viii.98 and a single worn female on 24.viii.98, Smallford, St. Albans, Herts.

(b) A scarce spider wasp from Bedfordshire. Pompilidae: male *Priocnemis cordivalvata* Haupt, 7.viii.98, from a sunny patch by a woodland path, Kings Wood, Heath and Reach, Beds.

WHITE, J.—Some ants from Sydenham Hill Wood, London SE21 and SE26. Formicidae: *Lasius niger* (L.), *L. flavus* (F.), *L. brunneus* (Latr.), *L. fuliginosus* (Latr.), *Myrmica ruginodis* Nylander, *M. scabrinodis* Nylander, *M. rubra* (L.) and *Stenamma debil* (Förster).

#### ORTHOPTERA

HACKETT, D.—The stripe-winged grasshopper, *Stenobothrus lineatus* (Panz.) is a species widely regarded as occurring on heathland or chalk grassland in Britain but the exhibitor had found it in two London boroughs in recent years, with those in Middlesex appearing to be new for the county. These were at Camley Street Nature Park, 20.vii.96, and Adelaide Nature Reserve, Chalk Farm, 7.vii.98, both in Camden, Middx. The former is recently established grassland on clay in a former lorry park and the latter is a south-facing railway embankment, also on clay. It has also been found at Wimbledon Common, near the Windmill car park, 5.vii.95, in the borough of Wandsworth and Merton, Surrey. The habitat here is heathland/acid grassland. The exhibitor would welcome further records from the London area.

SMITH, I. F.—Photographs of the grey bush cricket, *Platycleis albopunctata* (Goeze) taken 4.viii.98 at Pared Mawr cliffs, Porth Ceiriad, Llyn Peninsula, Caer, where a large colony was found.

#### DICTYOPTERA

MARSHALL, T. & V.—A mantid, *Campion* sp. from the rain forest on Lizard Island, off Queensland, Australia; also the world's largest cockroach, *Macro-*

*panesthia rhinoceros*, which was abundant in the rain forest on Magnetic Island, off Queensland, Australia after storms in August 1997.

SHARDLOW, M. E. A. — Two native cockroaches, *Ectobius panzeri* Steph. and *E. pallidus* (Ol.) taken at Arne RSPB reserve, Dorset, 1998.

#### PLECOPTERA

MARSHALL, T. & V. — A stonefly, *Dinotoperla* sp. from the rain forest on Lizard Island, off Queensland, Australia, August 1997.

#### NEUROPTERA

BARNARD, P. — The BENHS logo and a display of Nemopteridae. There has been some recent discussion about the origin and identity of the BENHS logo. In 1996 Richard Jones published an article (*Br. J. Ent. Nat. Hist.* 9: 1–2) describing how the original drawing of the mystery insect was made by Arthur Smith in the early 1960s. Apart from its use on the Society's ties, the logo was little used elsewhere, until it was recently redrawn by Rob Dyke and incorporated with the Society's name in the form now used in all official publications. But what is the mysterious insect? In a later note (*Br. J. Ent. Nat. Hist.* 9: 128) Richard Jones showed that the original was certainly a member of the Neuropteran family, the Nemopteridae, none of which occurs in Britain, but also showed that it was not the well-known Iberian species *Nemoptera bipennis* Illiger. An example, shown in the exhibit, has been used in the logo of the Asociación Española de Entomología.

There are over 150 species of Nemopteridae world-wide, mostly in the tropics and warm temperate regions. The functions of the long narrow hind wings vary: sometimes they have an aerodynamic stabilising function, in some species they act as visual signals, and the swollen wing-tips of some species may divert the attention of predators. One subfamily, the Crocinae, have simple thread-like hind wings, and their cave-dwelling larvae have an enormously elongated "neck". Examples of both were shown in the exhibit. These larvae were first found in ancient tombs in Egypt, and were therefore given the generic name *Necrophilus*! The striking appearance of the members of this family means that they have often been used as logos: in 1994 the International Association for Neuropterology adopted *Palmipenna pilicornis* Tjeder for this purpose. A related species was exhibited.

The specimen illustrated on the BENHS tie seems to have either a double swelling on each hind wing, or else the wing is twisted. Both conditions are found in this family, as shown in two of the specimens exhibited. On the new version of the logo the hind wings seem to have only a single apical swelling, and the hind wings are relatively shorter in comparison to the forewings than in the specimen on the tie. Any further attempts to track down the exact species of the logo will probably fail. Let us just accept that it is a nemopterid, and that it makes a very striking logo!

PLANT, C. — The ant lion *Euroleon nostras* (Geoff. in Fourc.) in East Sussex. An adult with teneral wing tips was found alive in a spider's web on 6.ix.98 at St Leonards-on-Sea, E. Sx., by Colin Milkins and sent to the exhibitor for identification. A few days earlier another specimen had been taken in a light trap at Dungeness, Kent, and released. These are the only known British records away from the breeding population on the Sandlings around Minsmere Nature Reserve, E. Suff. A note has been published in *The Entomologist's Record*, November 1998.

## RAPHIDOPTERA

SHARDLOW, M. E. A.—Two snake flies, *Phaeostigma notata* (Fab.) and *Xanthostigma xanthostigma* (Schummel), recorded from the RSPB reserve at Wolves Wood, Essex, in 1998.

## ARACHNIDA

SHARDLOW, M. E. A.—(a) Some rare and notable shingle-dwelling spiders recorded on RSPB reserves in 1997 and 1998. Salticidae: *Euophrys browningsi* Millidge & Locket and *Sitticus inexpectatus (rupicola* C L Koch), 1998, Havergate Island, Suff.; *Pellenes tripunctatus* (Walckenaer) and *Phlegra fasciata* (Hahn), 1998, Dungeness, Kent. Gnaphosidae: *Gnaphosa lugubris* (C L Koch) and *Haplodrassus minor* (O.P.-Cambridge), 1997, Havergate Island, Suff. Linyphiidae: *Trichoncus affinis* Kulczynski, 1997, Havergate Island, Suff.

(b) Some notable and uncommon spiders found in other habitats on RSPB reserves in 1997 and 1998. Gnaphosidae: *Zelotes petrensis* (C L Koch), *Z. lutetianus* (C L Koch), *Z. subterraneus* (C L Koch), 1997, Havergate Island, Suff.; *Trachyzelotes pedestris* (C L Koch), 1998, Wolves Wood, Essex. Pisauridae: *Dolomedes fimbriatus* (Clerck), 1998, Abernethy, Easternness. Linyphiidae: *Dismodicus elevatus* (C L Koch), 1998, Abernethy, Easternness.

## ISOPODA

SHARDLOW, M. E. A.—Two local woodlice recorded at Dungeness, Kent, during the 1998 BENHS field meeting. Oniscidae: *Cylisticus convexus* (Deg.) and Armadillidiidae: *Armadillidium nasatum* Budde-Lund.

## ACTINARIA

SHARDLOW, M. E. A.—An RDB3 BAP priority species of sea anemone, *Nematostella vectensis* Stephenson, found off Havergate Island RSPB reserve, Suff., in 1997 and 1998.

## ILLUSTRATIONS

HIGGS, G. E.—Five watercolour paintings comprising the following species: Picture 1. oleander hawk-moth *Daphnis nerii* L., convolvulus hawk-moth *Agrius convolvuli* L., death's-head hawk-moth *Acherontia atropos* L., bedstraw hawk-moth *Hyles galli* Rott. Picture 2. least yellow underwing *Noctua interjecta caliginosa* Schaw., lunar yellow underwing *N. orbona* Hufn., large yellow underwing *N. pronuba* L., lesser yellow underwing *N. comes* Hübn., lesser broad-bordered yellow underwing *N. janthe* Borkh., broad-bordered yellow underwing *N. fimbriata* Schreb. Picture 3. emperor moth *Pavonia pavonia* L. (print). Picture 4. clouded border *Lomasipilis marginata* L., july highflyer *Hydriomena furcata* Thunb., bordered beauty *Epione repandaria* Hufn., the chevron *Eulithis testata* L., scallop shell *Rheumaptera undulata* L. Picture 5. white admiral *Limenitis camilla* L.

REVELS, R.—A range of wildlife photographs from Richard Revels library. A photograph of *Epipagis cancellalis* Zeller and *Marasmia poeyalis* Boisduval, resting on a wall at Bo, Sierra Leone.

WOOLDRIDGE, D.B.—A photograph of *Cyclophora puppillaria* (Hübn.). Taken at mv at The Causeway, Freshwater, Isle of Wight on the 30.vi.1998.