

RSB115
.Z9A64

=1955= Key/RAA

Bu

QUALITY FLOWER BULBS



OUR PRIZE RANUNCULUS

SPECIAL RANUNCULUS OFFER

Again this year I am offering a "sure-bloom" smaller size bulb of Prize Ranunculus at the **low price of 50 bulbs for \$1.00 or 100 bulbs for \$1.85, 1,000 bulbs for \$15.00** Unanimous reports: "The finest we have ever seen." "Won prizes at local show," etc. Postage 10c or 25c on 1000 Bulbs.

BOB ANDERSON

179 South Vermont Avenue

LOS ANGELES

Telephone DUnkirk 9-0688

To Our Friends:

We start our new season with an expression of appreciation for your past business, and shall continue to do our utmost to merit your confidence.

We buy from the world's finest growers only, and guarantee our merchandise to be as described. We also guarantee that it will be delivered to you in perfect condition, but, we cannot guarantee your crop, or be responsible for loss or damage, due to weather conditions, carelessness, neglect, or lack of experience on **your** part.

We send cultural and planting guides with all orders, and believe that a thorough study of these will be most helpful.

Please note that this catalog lists Bulbs for the four seasons, and we suggest that you make up your order with **complete season needs**, as **early orders** will be given **priority** on short items.

Shipment of Bulbs and Nursery Stock must be done at the time most suitable for each item, so your order may be filled in several different shipments. In acknowledging your order, we will state when you may expect delivery.

Upon receiving merchandise, **please** examine carefully, and notify us at once of any errors or of damage to bulbs or nursery stock in transit.

Remittances Must Accompany Order

Please do not ask us to ship C.O.D., as it requires too much time at the Post Office, and is an additional expense to you. Your money will be refunded if we cannot fill your order.

The **Wise Gardener** will order now and avoid disappointment later.

Yours for Better Gardens,

BOB ANDERSON FLOWER BULBS

Telephone: DUnkirk 9-0688

Dear Friend:

If for some reason you do not plan on buying any of our wonderful Bulbs this season, will you kindly hand this little catalogue to someone else who loves flowers?

Many Thanks

BOB ANDERSON

ANEMONES

Delivery September to May

DeCAEN. Giant single poppy-flowered type in a rich mixture of blue, purple, red, white, etc., with black cushiony centers for contrast.

Jumbo Bulbs.....	\$1.50 dozen;	\$10.00 per 100
No. 1 Bulbs.....	75c dozen;	5.00 per 100
No. 2 Bulbs.....	50c dozen;	3.50 per 100

ST. BRIGID. Double or semi-double forms in an all-color mixture.

Jumbo Bulbs.....	\$1.50 dozen;	\$10.00 per 100
No. 1 Bulbs.....	1.00 dozen;	6.50 per 100
No. 2 Bulbs.....	50c dozen;	3.50 per 100

Postage 10c

SEPARATE COLOR ANEMONES

Blue. Scarlet, white, Fuchsia Rose.

No. 1 Bulbs. Per dozen, \$1.00; per 100, \$6.50; Postage 10c.

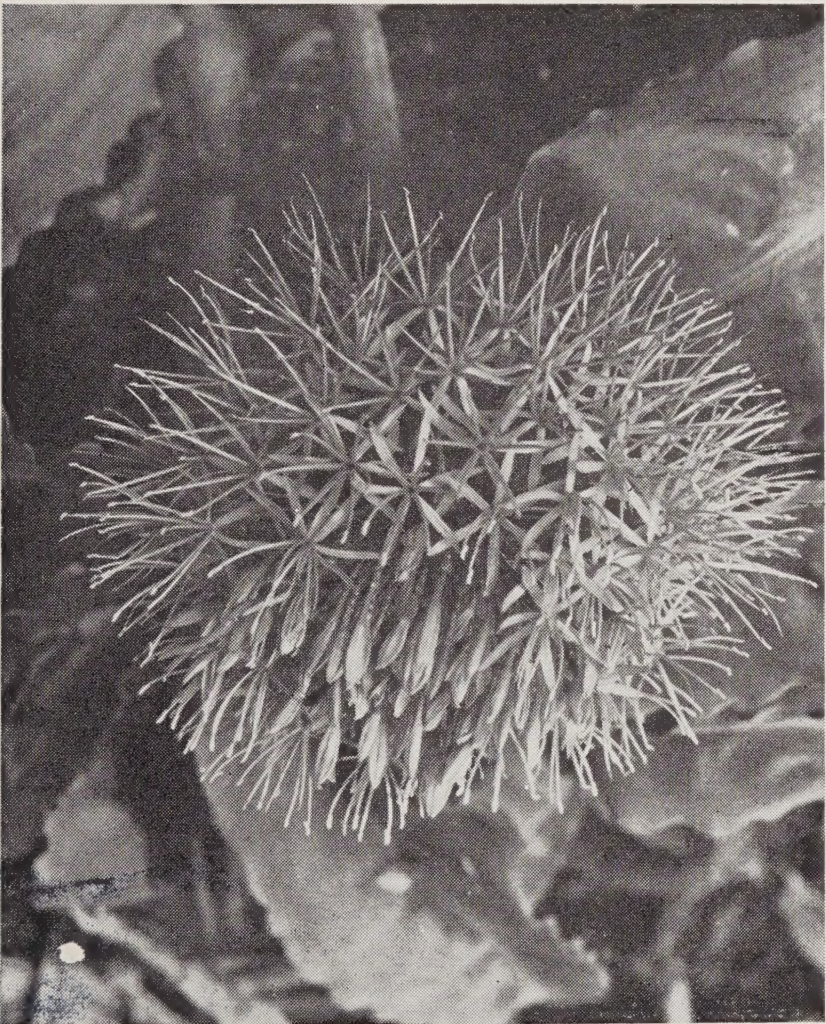
ANEMONE SPECIAL OFFER

(See page 4)

Companion to the Ranunculus and can be interplanted with them. They will augment the color scheme by adding the blues, lavenders and purples to the rich golds, etc., of the Ranunculus.

100% Blooming Size Anemones De Caen

Put up in attractive colored litho packet with full cultural directions. **50 bulbs \$1.00; 100 bulbs, \$1.85; Garden Club Special, \$15.00 per 1,000.** Postage 10c or 25c on 1,000 bulbs.



NEW BLOOD LILY

Delivery January to March

HAEMANTHUS KATHERINAE. This breath-taking new Blood Lily can only be partially appreciated from above illustration. The flower head is 7 to 10 inches across, composed of over 100 individual florets of vivid orange and coral. It likes rich soil and shade in the warm states and can be grown as a window plant in the north. Large bulbs that should bloom the first year. Special, each, \$4.50. Mailing 35c.

BLETILLA (Chinese Orchid)

Delivery November to February

HYACINTHINA. Seven to eight dainty orchid shaped flowers on stems 10 to 15 inches tall. This true orchid can be easily grown in your garden. Prefers partial shade with plenty of moisture. Hardy under all conditions. Lavender only. Large bulbs, each 65c, dozen \$6.50. Postage 10c.

AMARYLLIS—Giant Hybrids

Delivery January to April

Flowers of immense size and many new shadings. Flowers often attain a diameter of 10 inches, many with two or more spikes per bulb. All should bloom the first year and can be grown in pots or garden. These are large bulbs and are sold in a mixture of colors only. Each, 85c; dozen, \$8.50. Postage 15c or 50c dozen.





GIANT HYBRIDS AMARYLLIS

AMARYLLIS (Fall Blooming)

A. BELLADONNA. Sometimes referred to as Naked Lady Lily, for it blooms in the Fall lacking any leaves. Fragrant rosy pink flowers borne on a tall stem. Plant in garden nose deep and leave undisturbed for many years. Each, 35c; dozen, \$3.50. Postage 15c or 50c dozen.

BEGONIAS (Tuberous)

Delivery February to May

CAMELLIA FLOWERED DOUBLES

This form resembles the Camellia or Rose and is the most popular of the Begonia's many types. The center bud only is double, the two side buds are single. Your choice of separate colors in pink, salmon, orange, yellow, white or scarlet.

1-inch to 1½-inch tubers, 15c each; \$1.50 per dozen. Postage 10c.

1½-inch to 2-inch tubers, 35c each; \$3.50 per dozen, Postage 15c.

SUPER-GIANT BEGONIA TUBERS

CAMELLIA TYPE

2½-inch and up in diameter. Do not confuse these with old tubers—they are first year grown from seed, and will produce a magnificent plant. Same colors as above. Each, 60; dozen, \$6.00. Postage 15c.

HANGING BASKET (Lloydii Type). Flowers of medium size, but make up for lack of size in an extravagant profusion of hundreds of double blossoms. The pendant form of the plant allows of exceptional treatment for baskets, pots, rock garden, etc. Mixed colors. 1½-inch to 2-inch tubers, 35c each; \$3.50 per dozen.

Giant 2½-inch and up tubers, 60c each; \$6.00 per dozen. Postage 15c.

MULTIFLORA HYBRIDS. The growing instructions are the same as the regular types, except that they will withstand a little more heat. They bear many times the blossoms of the ordinary sorts, and are from 1½ to 2½ inches in diameter. The blossoms vary from fully double to semi-double, and some singles. They make excellent pot plants or bedding plants. The blooming period is longer than the standard types because they start earlier and will withstand more cold in the Fall. Mixed colors only. \$3.50 per dozen; each, 35c. Postage 15c.

PICOTEE DOUBLE. A camellia type Begonia with the edges of the petals in a different shade of color. Available in a mixture of pastel shades. 1½-inch to 2-inch tubers, 35c each, \$3.50 per dozen. Postage 15c.

RANUNCULUS

Delivery August to May

Our strain of this popular flower is unrivalled in brilliance of color and doubleness of flower. In the South and along the Pacific Slope, where Winters are mild, it is planted in the Fall for Mid-Winter bloom; in the North after all danger of frost is past.

Our reputation for the best in Ranunculus extends over many States and the demand this year probably will exceed the supply.

Cultural directions furnished with each order.

Giant Flowering (Mixed Colors)

Tecolote Hybrid

Jumbo Bulbs.....	\$1.50 dozen;	\$10.00 per 100
"Tops"	1.00 dozen;	6.50 per 100
No. 1 Bulbs.....	75c dozen;	5.00 per 100
No. 2 Bulbs.....	50c dozen;	3.50 per 100

Separate Colors (Tecolote)

RANUNCULUS

We also offer you separate colors in the following shades: Yellow, Pink, Red, White, New Sunset shades ranging from Brilliant Flame to Soft Copper Salmon, and New Rose shades. Deeper in color than our Pink shades. No. 1 Bulb: \$1.00 per dozen; \$6.50 per 100. Postage 10c.

(See Page 1 for Color Picture and SPECIAL OFFER)

CLIVIA (New Hybrids)

Delivery Any Time

Aristocrats of the shade garden. Large clusters of Amaryllis-like blossoms in vivid shades of orange, salmon or orange-red, borne on tall stems amid lush growth of their strap-like foliage. A sure bet to liven up the dark places in your garden, for they thrive in the shade. Our stocks are from a private estate and among the best of the new, large flowering hybrids. Large plants ready to bloom soon. **Specially priced, each, \$3.00.** Postage 35c each. **2-year-old seedlings, \$1.00.** Postage 15c.

DAHLIAS

Delivery March to June

We are justly proud of the following fine collection of prize-winning Dahlias, many of which are from stock imported and thoroughly tested by one of the West Coast's most particular growers.

For beauty and length of bloom, a well-grown Dahlia plant is really "tops," and one does not have to be an expert to have blooms he is proud of.

PRIZE DAHLIAS

Delivery March to June

- Canary Cup.** Good Yellow, Cactus.
- Pierre Lundeen.** Lovely Salmon-pink, Cactus.
- Red Midget.** Small, Cactus.
- Carnival.** Chinese-red, Ball Type.
- D-Day.** Fine Pink. Decorative.
- Exquisite.** Large Prolific White. Decorative.
- Jane Cowl.** Giant Bronze. Decorative.
- Kentucky Sportsman.** Amber, White-tipped. Decorative.
- Marie Louise.** Orchid. Decorative.
- Rosa Nell.** Rose-red. Decorative.
- Gen. Eisenhower.** Red. Decorative.
- Silver Wings.** Lavender. Decorative.
- Orange Glory.** Orange, Red and Gold. Decorative.

Your choice of any of the above, 50c each. Add 15c postage for one tuber, 25c for two, or 50c per dozen.

NEW PRIZE DAHLIAS

- The Cardinal.** Large Red. Decorative.
- Forest Lawn.** Best White Cut Flower. Decorative.
- Laurie Sue Gibbs.** Fine, Clear Pink. Decorative
- Town Topic.** Purple, White Tipped. Decorative.
- Clara Clemens.** Red, White Tipped. Ball Type.
- Mandalay.** Light Yellow. Exhibition. Semi-Cactus.
- Nagels Sensation.** Beautiful Soft Rose. Cactus.
- Orfeo.** Purple. Cactus.

Your choice of any of the above, \$1.00 each. Add 15c postage for one tuber, 25c for two, or 50c per dozen.



FANCY LEAVED CALADIUM

Delivery January to May

WHY should we be prejudiced in favor of flowers when foliage plants deserve their share of the spotlight, too? There is no grander plant either for variety of color, ease of growing and many uses than the fancy-leaved Caladium. For specimen plants or for garden culture it is "top" in color. I have grown it in sand only with chemical nutrients for food. I have grown it from small pips in the garden as a "background" for my Tuberous Begonias. I have failed to find an equal for its value when it comes to the need of a high-class foliage plant, and I herewith offer what I consider ten of the finest varieties. Full cultural directions included with each order. Order early. Large, peppy bulbs.

CANDIDUM. Snow white with green veins and network. Narrow green border. Fine Easter variety.

THOS. TOMLINSON. Center of leaf and blotches shining crimson. Narrow border. Strong grower.

ITACAPUS. Entire leaf dark red or a rust shade; narrow border with red dottings. One of the most beautiful Caladiums.

JOHN PEED. Bold plant with many leaves. Center transparent cherry-red, light green margin.

LORD DERBY. Delicate transparent rose with dark green ribs and narrow green edge. Abundant foliage. Very similar to "Our Red."

MACAHYBA. Dark moss-green, profusely spotted and mottled with transparent lilac blotches. Heavy scarlet ribs.

STOPLIGHT. Crimson. Narrow green border. Strong grower.

MRS. W. B. HALDEMAN. Glowing bright-pink with narrow green edge. Varies to a deep pink according to soil used.

POECILE ANGLAIS. Dwarf, many-leaved type with waxy leaves of deep crimson having a bluish overcast and bordered metallic green. One of the best.

MRS. SANDER. Roundish, dark green leaf, heavily blotched. Transparent deep rose.

Your choice of any of the above, 50c each; \$5.00 per dozen. Postage 10c each or 25c per dozen.

SHASTA DAISIES

Delivery January to March

Large divisions of hardy white daisy. Plant in full sun, feed and water generously. Make a wonderful cut flower.

ESTHER READ. Fine, large, fully double. Cushiony center.

MARCONI. Fully double. One of the finest varieties. Six-inch bloom on 2½-foot stems.

GIANT MAJESTIC. Duplex type, very popular.

Large divisions: 25c each, or \$2.50 per dozen. Postage 25c.



YELLOW CALLA LILIES

Grow best in full sun. A splendid subject for pots or garden. Leaves are decorative with white spots, flowers a golden yellow. When plant goes to sleep dig bulbs or keep soil dry. **Extra large bulbs, 35c each; 3 for \$1.00; \$3.50 per dozen.** Postage for 3 bulbs, 25c; for dozen, 50c.

CALLA LILIES

AETHIOPICA. The popular large flowering White Calla. Grows best in shade and can be left undisturbed for many years. Best planted in Fall. Each, 15c; \$1.50 per dozen; \$10.00 per 100. Postage 15c per dozen, or 50c per 100.

BABY WHITE CALLA. This miniature is a charming dwarf in plant and blossoms. Fine for pots or garden. To maintain this calla, a true miniature, grow in poor soil and full sun. Furnished in growing rooted plants only, 25c each: \$2.50 per dozen. Postage 10c.

BLACK CALLA. An orderless dwarf calla with deep purple maroon blossoms. Fine for pots or garden. Plant in the Fall, 3 inches deep, in partial shade. Extra large bulb of this rare species, special 65c each. Postage 10c.

PINK CALLA SPECIAL

This beautiful dwarf novelty thrives in pot or garden. Prefers shade and light soil. Special, each, 35c; 3 for \$1.00; \$3.50 per dozen. Postage 10c.

Calla Delivery Dates

White in September to January. Black, September to December. Pink and yellow. November to April.

DAFFODILS

Delivery September to January

KING ALFRED. The most popular large trumpet golden yellow Daffodil in America. Our bulbs will yield several spikes the first year. Will force in pots, or can be put in

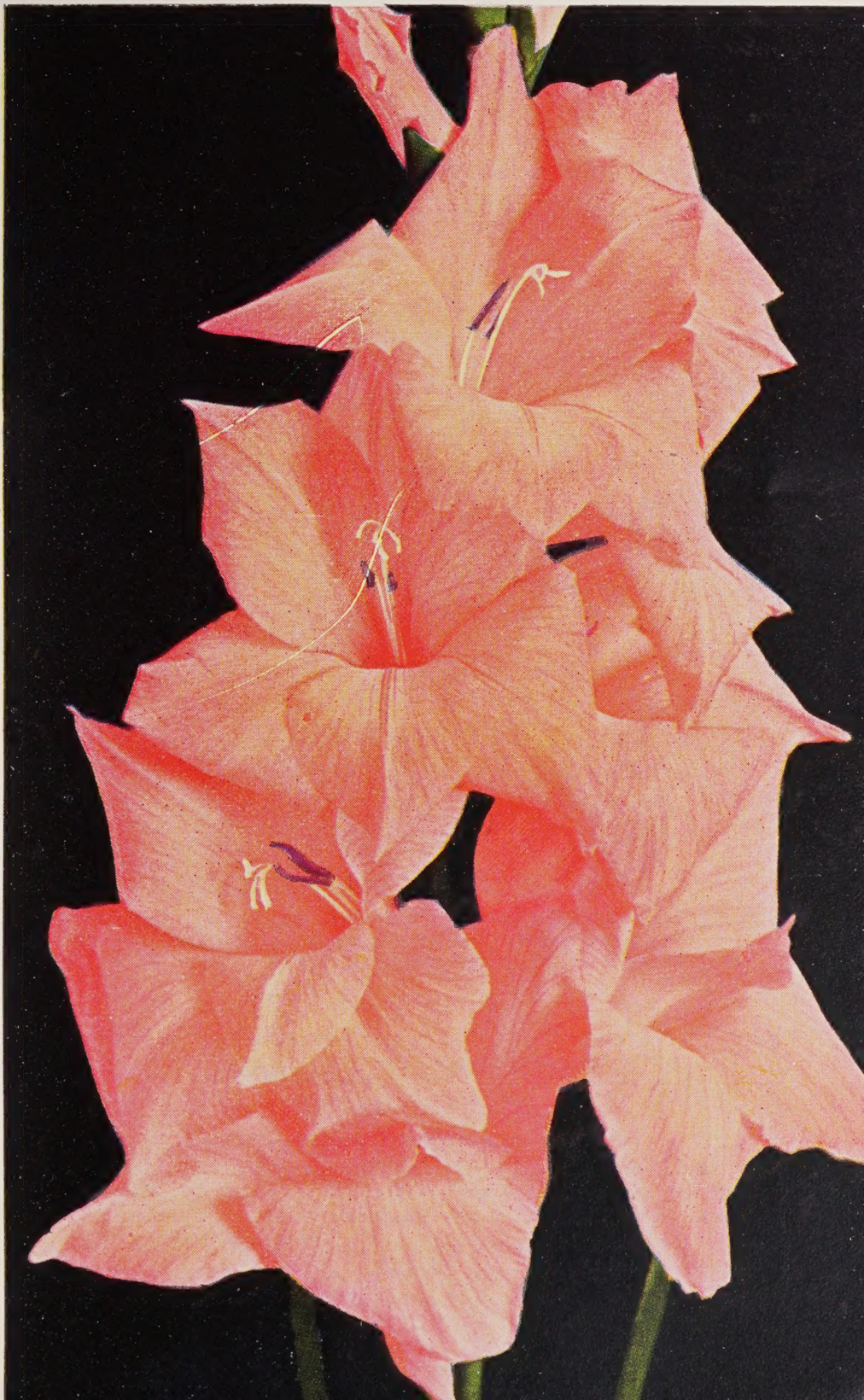
the garden and divided every third year. Never destroy foliage after blooming time—they are making food for next year's bloom. Large, peppy bulbs, \$1.35 per dozen; \$10.00 per 100. Postage 35c. 100 bulbs sent express collect.

ACTAEA (PHEASANTS EYE). Broad, snow white perianth. The very large eye is broadly margined with dark red. A beautiful exhibition flower. 15c each or \$1.50 per dozen. Postage 15c.

TWINK (Double). This beautiful novelty appeals to everyone who sees it. Very large flowers of alternate layers of pale primrose yellow and vivid orange. A striking effect. Each 20c; \$2.00 per dozen. Postage 15c.

DELUXE MIXTURE OF DAFFODILS

One of America's largest growers of Daffodils has co-operated in making up for me a mixture of over 100 varieties. This offers you one of the grandest opportunities you ever had to observe the many forms, colors and types this charming flower comes in. The blooming period will stretch over many months. **Specially priced \$1.35 per dozen; \$10.00 per 100 bulbs.** Postage 35c per dozen. 100 sent Express collect.



CHOICE GLADIOLUS

Delivery November to April

Plant lots of Glads for a magnificent effect in your garden, and for an abundance of cut flowers. You can have almost year-around bloom by planting a few dozen each month (October to May). The culture is simple, two things of major importance, namely, an abundance of water, and efficient thrip control.

Our list has been carefully selected from the finest and most reliable varieties on the market today. Why pay the florist's high price when you can grow them yourself?

Rosa Van Lima. Huge, clear pink.

Ethel Cave Cole. Very large, soft pink.

Chamouny. Velvety rose cerise with silver edge.

Polynesiae. Orange salmon. Ruffled.

Red Charm. Large, deep velvety red.

Valeria. Ruffled bright red.

Sherwood. Ruffled royal purple.

Ravel. Best blue, extra fine.

Elizabeth the Queen. New, large, ruffled lavender.

Yellow Herald. Finest yellow.

Margaret Beaton. White with red blotch in throat.

Snow Princess. Creamy-white, very large florets, compactly placed on stem.

Your choice of any of above fine varieties, \$1.00 per dozen; \$7.50 per 100. Postage 15c per dozen; 100 Express collect.

VERY CHOICE MIXTURE

Made Up of Many of the

FINEST VARIETIES

GLADS

No. 1 Bulbs: **85¢** per dozen **\$6⁵⁰** per 100

Postage 15c 100 Express Collect

AMARCRINUM

Delivery Anytime

HOWARDII. A beautiful hybrid, a well proportioned ever-green plant, with clusters of large, fragrant, pink flowers on 30-inch stems. Blooms in late Summer. Very special price, \$1.50 each. Postage 35c.

ELEPHANT'S EAR

Delivery January and February

CALADIUM ESCULENTUM. One of the finest ornamental leaf plants wherever a tropical effect is desired. Does best in semi-shade, in moist location. Large bulbs. Each, 75c. Postage 15c.

HYACINTHS (Giant Dutch)

HOLLAND GROWN

Delivery September Through January

Pink Pearl, light pink. **Jan Bos,** carmine red. **L'Innocence,** best white. **Grand Maitre,** deep blue. **Dr. Streseman,** light blue. **City of Haarlem,** yellow. Your choice of these fine large forcing bulbs. Each, 35c; \$3.50 per dozen. Postage 25c per dozen.

IRIS (Dutch)

Delivery September to February

Bulbcus Iris are not to be confused with the common or bearded form of Iris. The grace and beauty of this race of tall growing forms have nicknamed them "Poor-man's Orchids." The bulbs are planted in the Fall only and bloom from Mid-Winter to Spring. The blue shadings of many, together with their pencilings of gold in the fall make a color combination unequalled in any other flower. They require a fully sunny location and should be planted 4 to 5 inches deep.

White Exselsior. Best white. **Imperator.** Late, royal blue. **Wedgewood.** Early, light blue. **Golden Harvest.** Large, fine golden yellow. Your choice, 75c dozen; \$5.50 per 100. Postage 15c.

OUTSTANDING NEW DUTCH IRIS

Le Mogel. Finest golden bronze ever offered. Tall, large flowered. Exceptionally long lasting.

Blue Ribbon. Deep velvety royal blue color much like National Velvet, but a very large bloom.

King Mauve. Immense flower in a dainty lavender blue.

These three beauties will bloom at the same time, for a striking effect in your garden.

Supply limited at this special price of \$1.25 per dozen, or \$8.00 per 100. Postage 15c.



GLOXINIA

Delivery January to April

GLOXINIAS are one of Nature's masterpieces. The velvety richness of their blues, violets, reds, etc., set them aside as the aristocrats among flowers. The main requisites, semi-shade and a damp, warm air. Fine for greenhouse or lathhouse. Cultural directions furnished.

Roi-des Rouges. Crimson frilled.

Mount Blanc. Pure white.

Tigrina (Spotted). Rose shades.

Viclacea. Soft violet.

50c each; \$5.00 per dozen. Postage 15c.

Also fine mixture of many other varieties. 35c each; \$3.50 per dozen. Postage 15c.

FREESIAS

Delivery September to
January

Fragrance is an illusive quality to describe but the Freesia has a perfume that appeals to all. Color or white can be had, the white a bit more fragrant. Easy to grow, sun or semi-shade, plant-heavy base down 3 inches deep, space 3 inches apart each way. 100 bulbs will only plant a small plot. Plant from September to January for a long blooming period.



(New Giant Hybrids)

This new strain is a vast improvement in size, length of stem and vigor over the standard commercial type. You have your choice of color in white, blue, pink, red or yellow. 50 per dozen; \$3.50 per 100. Postage 10c.

SPECIAL RAINBOW FREESIA OFFER

A carefully blended mixture of over 20 different shadings and colors. Freesias should be planted in mass quantities to make a good showing and our special low price makes this possible. **Special, 50 bulbs,**

\$1.00; \$1.85 per 100 bulbs. Postage 15c.



LEUCOCORYNE (Glory of the Sun)

Delivery September to March

IXIODES ODORATA is a charming new introduction from Chile. Fragrant flowers of exquisite light blue on tall wiry stems and excellent keeping quality. Grass-like foliage requires close plantings—3 inches apart. Special offer: 15c each; \$1.25 per dozen, \$8.00 per 100. Postage 10c.



SPARAXIS (New Hybrids)

Delivery September to January

You will like the vivid splash of color this mixture makes, for there are many brilliant reds, oranges, golds, etc., among them. Hardly two will be exactly alike. Fine for cutting, too. Priced so you can plant a lot of them. 50c dozen, \$3.50 per 100. Postage 10c.

IXIAS (Corn Lilies)

Delivery September to December

THE IXIA is a splendid flower for cutting. Grows on tough, wiry stems and comes in a wide range of colors. The culture is the same as for Freesia and must be planted in the Fall. A splendid all-color mixture. 75c a dozen; \$5.00 per 100. Postage 10c.

NERINE

Delivery November to February

BOWDENI. This is a true Nerine and not to be confused with the *Lycoris Radiata* or red spider lily. The true Nerine has orchid-like blossoms of pink striped rose borne on stems 12 to 15 inches in umbels of 7 to 10 flowers per stem. They bloom in the Fall. Foliage in Winter and Spring only. Offered at the low price of 65c each; \$6.50 per dozen. Postage 15c-50c dozen.

ORNITHOGALUM

Delivery September to January

ARABICUM (STAR OF BETHLEHEM). Large cluster of White Flowers, with glossy shoe-button eye, on two foot stem. Fragrant. Blooms at Easter time. Per dozen, \$1.25. Postage 35c per dozen.

SWEET PEAS (Early Flowering)

For those who live in mild Winter climates the Fall-planted Sweet Pea returns much for the small area needed. Plant only Early Flowering Spencer type if you wish the best in long stems and giant ruffled flowers.

The following new varieties have been chosen for their outstanding merit in color, length of stem and large flowers:

Bacchus. Rich red maroon. **Bridesmaids.** Large silvery pink. **Eileen.** Begonia rose. **Fragrance.** Clear lavender. **Hope.** Best large white. **Iris Blue.** Deep blue. **Top Hat.** Violet blue. **S. Temple.** Rose pink. **Ramona.** Salmon. **Susanna.** Carmine red. **Treasure Island.** Orange red.

Your choice of any of these new modern florists' favorites: 6 packets, 50c; each, 10c. Postage for 6 packets, 10c.

SPREKELIA (Jacobean or Aztec Lily)

Delivery October to April

FORMOSISSIMA. Velvety scarlet red Amaryllis with orchid shaped blossom. Early summer blooming. Each, 65c; dozen, \$6.50. Postage 10c or 25c per dozen.

HARDY LILIES

Grown by Jan de Graaff, Nationally-Known Hybridizer

THE ARISTOCRATS OF THE GARDEN—PLANT EARLY

Delivery October to January

CENTIFOLIUM OLYMPIC HYBRIDS. Color range from white through creamy yellow, soft fuchsia pink and cool, icy green. Delicate shading on exterior of petals of green or soft wine shades. Each, 35c; special, 3 for \$1.00; \$3.75 per dozen. Postage 15c each; 35c per dozen.

MID-CENTURY HYBRIDS. Beautiful hybrids in a mixture only, of both outward and upright facing flowers. Color range, yellow through salmons and orange reds. Beautifully spotted. Stems two to three feet tall. Special price of 65c each, 3 for \$1.75, or \$6.50 per dozen. Postage 15c, or 35c per dozen.

L. SPECIOSUM RUBRUM (Red Champion). This strain is from disease-free stock grown in this country for over 40 years. A beautifully lily spotted and flushed crimson. Each, 65c, 3 for \$1.75, \$6.50 per dozen. Mailing 15c, or 35c per dozen.

CROFT. The finest of Easter lilies. Long trumpet and strong, healthy foliage. Fine for either garden or pots. **Large bulbs,** each, 35c; 3 for \$1.00; \$3.75 per dozen. Mailing 15c, or 35c per dozen.

BIRD OF PARADISE

Delivery Any Time

STERLITZIA REGINA. The exotic plant is very much admired wherever seen. The plant gets its fancy name because the flowers resemble some fantastic tropical bird in vivid colors. Visualize a head of red from which emerges a cockade of glorious orange and blue. This is NOT a bulb. It is grown from seed or large plants divided. We offer three-year-old seedlings that will stand transplanting nicely without setback. This plant semi-tropical, so plant in tubs if temperature drops below 25 degrees. Specially priced, \$3.00. Mailing charge, 35c.

TULIPS (Imported Dutch)

Delivery September Through January

We offer only the best in the largest top-size bulbs, and if planted properly they will give you a display of thrilling beauty. These varieties are chosen for their extremely long stems and large flowers. Directions for southern planting included.

LATE FLOWERING DARWINS, ETC.

Aristocrat, giant rose with blue base.

Clara Butt, delicate salmon pink.

White City, very large, pure white.

Bartigon, fiery crimson.

Cordell Hull, cherry-red, striped white.

Mrs. John Scheepers, finest large pure yellow.

The Bishop, pure violet-blue.

Insurpassable, largest lilac, extra fine.

PARROT TULIPS

Parrot Sunshine, deep golden yellow.

Blue Parrot, heliotrope blue.

Fantasy, salmon pink, green markings.

These, bright red.

Your choice of all listed tulips, \$1.50 per dozen; \$10.00 per 100. Postage 15c per dozen, 50c per 100.

TUBEROSE

Delivery February through April

DOUBLE PEARL. Large double waxy-white blossoms. Delightfully sweet scented. Require full sun, and bloom in late summer. Large bulbs: 15c each; 1.50 per dozen. Postage 35c for dozen bulbs.

LYCORIS (Spider Lilies)

Delivery July to November

RADIATA. Sometimes called Guernsey Lily. Cluster form of vivid red amaryllis-like lilies with extended stamen resembling a gossamer spider web. Very showy. Bulbs bloom in September and if purchased in July or August will bloom the same year. Foliage Winter and Spring only. 25c each, \$2.50 per dozen. Postage 10c, 25c per dozen.

WATSONIA

BEST AUSTRALIAN AND AMERICAN VARIETIES

Delivery September to December

These tall growing cousins to the Gladiolus must be planted in the Fall. Bloom early Spring and require no lifting for many years. Sunny location.

Extra Large Flowering Varieties.

Mrs. Bullard's White.

Clunes. Pearl Lavender.

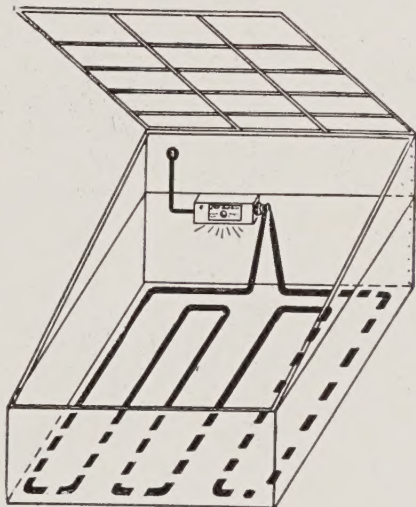
Adelaide. Pink, with deeper pink throat.

Also in choice mixture of many shades. \$1.25 per dozen, \$8.00 per 100. Postage 15c, or 50c per 100.

BOTTOM HEAT WITH "GRO-QUICK"

GREENHOUSE CONDITIONS
DUPLICATED

NOW you too can start early cuttings, grow tropical bulbs and plants with the skill of the professional.



SEED UP IN 30 HOURS. ROOT CUTTINGS IN 6 DAYS. CUT GERMINATION TIME BY TWO-THIRDS. TRANSPLANT TWO WEEKS SOONER.

Above enthusiastic reports from users tell what GRO-QUICK soil heating cable will do for you. FOR HOTBEDS—COLD FRAMES—PLANT BENCHES—FOR EARLY STARTING IN OPEN GROUND. Operates from household current. Shipped complete with instructions and plans.

These standard 5 watt per foot, 115 volt hotbed units are for use only in damp soil.

J40A for single sash bed or 20 square feet, has J40 cable and AT air thermostat. **\$6.75**

S80A for double sash bed or 40 square feet, has S80 cable and AT air thermostat. **9.00**

J40 Cable only, 40 feet — 200 w. for 20 square feet.....\$2.25
 S80 Cable only, 80 feet — 400 w. for 40 square feet..... 4.50
 AT Thermostat only, 1000 w. with pilot light..... 4.50
 BT Bulb Thermostat—1725 w. 115 v. or 3450 w., 230 v.....15.00

These 2½ watt per foot cables for use in air, sand, or other special rooting mediums. The square foot areas are based upon 10 watts per square foot.

A6	15 watts	6.3 ft.	1.5 sq. ft.	\$1.00
B12	30 watts	12.6 ft.	3 sq. ft.	1.80
M26	60 watts	26 ft.	6 sq. ft.	2.80
J56	140 watts	56 ft.	14 sq. ft.	3.00



GERBERA

Delivery September to April

JAMSONII HYBRIDS. The peer of all Daisies. The Gerbera offers a wide range of color, an extremely long blooming period and an exceptionally fine cutting flowers. Our strain is a superior strain of field-grown plants and is composed of a well-blended mixture of brilliant colors, predominating in pink, salmon, red, gold, etc. 80% duplex. Offered in a MIXTURE OF COLORS ONLY, 30c each, \$3.00 per dozen. Mailing, 25c per dozen.

Culture for Gerbera

The Gerbera requires a full sunny location to do its best, drainage must be good and in setting of the new plant have the top of the crown just even with the soil level. Space one foot apart and feed regularly. Water well and follow by short period of drying out.

BOB ANDERSON

179 S. Vermont Avenue

Los Angeles 4

Telephone DUnkirk 9-0688