



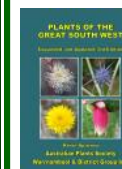
**AUSTRALIAN PLANTS SOCIETY (SGAP)
Warrnambool & District Group Inc. Newsletter**
February 2022 No 482

Correa reflexa 'Grannys Grave'

www.facebook.com/warrnamboolsgap



'Plants of the Great South West 3',
book on plants of South West Victoria
\$25, available now from
Kevin Sparrow at
ksparrow93@gmail.com
Ph: 55626217



New Edition
out now.



Incorporation No: AOO13120X

ABN: 51672752196

Web: apswarrnambool.org.au

Email: warrnamboolpresident@apsvic.org.au

warrnamboolsecretary@apsvic.org.au

warrnambooltreasurer@apsvic.org.au

On Eastern Maar Country

EDITORIAL

Hello members,

It seems such a long time since we had a face to face meeting of members at the Mozart Hall, so it will be great to be able to get back together again and talk about plants!

Our speaker this month is Adam Mattner (Michael and Dorothy's son) who will be speaking to us on Kakadu, this will be an introduction to Kakadu that will include local culture, flora, fauna and waterfalls. Adam has been living in the NT for a number of years so is somewhat of an expert. I look forward to his talk.

Last week, I was most fortunate to be invited to attend 2 day Glenelg Hopkins CMA sponsored sessions on wetlands by Dr. Graeme Lorimer. This included visits to Maam Reserve, Lake Pertobe and Mt Emu Creek at Panmure and Graeme taught us techniques that can be used in plant identification. It was a most interesting but very tiring two full days and I was able to photograph 7 more species for my book. The **really exciting thing** is, that Graeme found and identified a Critically Endangered species at Lake Pertobe, *Najas marina* - Holly-leaf Water-nymph which has only once been recorded in Victoria, in 1978 at Benn River in Gippsland. It is found in other states but no other sightings in Victoria. Also found was *Stuckenia pectinata* - Fennell Pond-weed which has not been recorded in Warrnambool before. See my photos on page 6 - 7. Also a report on Graeme's visit on pages: 8 - 9. Neville Walsh from the Herbarium is travelled down this week to inspect our findings on site and collect samples.

Don't forget to bring something from your garden. I look forward to seeing you on Friday 25th, Cheers, Kevin

Members Diary:	Page 2
Plant Profile:	Page 3 - 4 - 5
New Species at Lake Pertobe:	Page 6 -7
Report on Graeme Lorimer Visit:	Page 8 - 9
Signs Replaced at Swan Reserve:	Page 10
APS Vic Diary:	Page 11 - 12

We acknowledge the Eastern Maar people as the traditional owners of the land on which we meet and pay our respects to their elders past and present.

February 25th - Members Night - Adam Mattner speaking on Kakadu from 8.00pm

Members Activities

February 25th: Members Night - Adam Mattner speaking on Kakadu National Park.

March 3rd: Committee Meeting - Thursday at 1.30pm at Sherwoods. Delayed due to John not being available on Tuesday 1st.

March 25th: Members Night - TBC

March 29th: Committee Meeting - TBC

April 22nd: Members Night - Launch of Environmental Weeds of Warrnambool booklet. TBC

April 26th: Committee Meeting - TBC

May 27th: Members Night - AGM, speaker Miriam Ford speaking on Prostanthera. TBC

May 31st: Committee Meeting - TBC

APS Vic. Members Activities



“Fabulous Peas”
15th and 16th October 2022

York on Lilydale, Mount Evelyn, Victoria

Please submit your articles for the newsletter by the end of the second week of the month

President: Mike Halls, 127 Rooneys Rd, Warrnambool 3280 Phone: 0476 250 435 Email: mandehalls@bigpond.com

Vice President: David Handscombe, 7 Settlers Lane. Illowa. 3282 Phone: 0429 866 862

Secretary: Kevin Sparrow 35 Swan Street, Warrnambool. Phone: 55626217

Treasurer: John Sherwood. 26 McConnell St, Warrnambool Phone: 55628064 Email: jsher@deakin.edu.au

Newsletter Editor: Kevin Sparrow, 35 Swan Street, Warrnambool. Phone: 55626217 Email: ksparrow93@gmail.com

Public Officer: John Sherwood. **APS Rep:** Michael Mattner, **Group Historian:** Joyce Sparrow. **Supper:** Liz Halls.

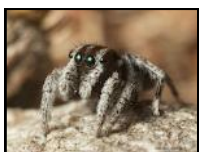
Other Committee Members: Dorothy Mattner, Michael Mattner, Joan Krygger, Ross Dawson.

The APS Warrnambool & District holds meetings on the 4th Friday of each month at the Mozart Hall Warrnambool at 8pm.

APS Warrnambool & District is a District Group of the Australian Plants Society (Vic)

All members are required to also be a member of APS Vic.

Plant Profile By Dave Handscombe - *Persoonia pinifolia*



Information on this plant was obtained from various reference books, the internet and from personal experience

Species: *Persoonia pinifolia*

Persoonia: Named after Christian Persoon, a South African botanist during the 18th/19th century and pinifolius – from the genus Pinus and the Latin, folium, a leaf.

Common Name: Pine-leaved Geebung.

Dimensions: A large shrub from 2 - 5 metres by 1 - 4 metres.

Cultivar Name: There are no registered cultivars listed on the ACRA site.

Persoonia pinifolia occurs in heath and dry sclerophyll forests of the Sydney basin and is suited to well drained acidic sandy, sandy loam and loam soils. Hardy to moderate frosts it can be grown in full sun through to part shade. It is tolerant of coastal conditions and can be pruned to shape or used as a hedge or for screening. The yellow fragrant flowers occur through the summer months into autumn followed by green or purplish fruit called a drupe (a drupe is a fleshy fruit with a single stone containing the seed). In general *Persoonia* fruit is edible and sought after by both birds and some mammals. Aboriginal communities used some species both medicinally and as bush tucker, (I have tried eating the fruit from some species but found them to be quite bland, although I have since read that you must wait for the fruit to fall to the ground to be sure they are ripe). It makes an excellent cut flower when the garden has little else to offer.

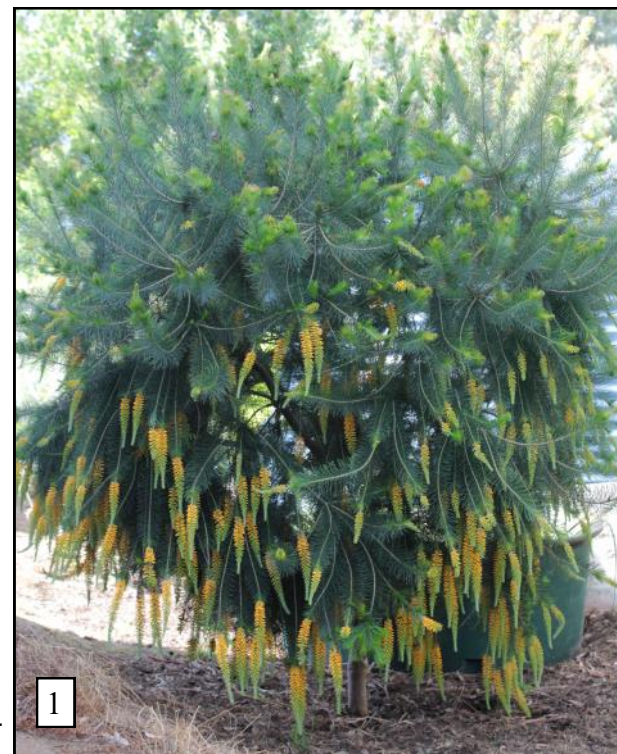


Photo 1: This plant was heavily pruned last year

Photo 2: This plant has never been pruned

Propagation of Persoonias is difficult with the seed having a dormancy period that may last for several years, either an inhibitor has to leach out or the seed coat has to break down to allow water penetration before germination can occur. Most plants are produced from cuttings using soft new growth, but strike rates are usually low. If you look under older plants that have flowered for several seasons you may find seedlings that can be carefully dug up and potted on. Several of the plants in our garden were propagated this way.

Photo 1 is a plant I pruned with a hedge trimmer early last year.



Photo 2 (which is typical of the rest of the pinifolias in the garden) is of a plant left unpruned. You can see a striking difference in the flowering and I would highly recommend being brutal with the clippers if this is the result you are likely to achieve.

Photo 3: A weepy skirt of flowers on the pruned plant
Photo 4: A close look
Photo 5: Getting closer still



Photo 6: Flowering commences at the base of the raceme

Photo 7: Notice how the colour varies as the flowers age

Photo 8: A closer look

Photo 9 - 10: Getting up close and personal to see the shape of the flowers



Critically Endangered Aquatic Plant Found at Lake Pertobe.



Dr Graeme Lorimer visited Warrnambool last week to carry out some wetland information sessions for the GHCMA. I was invited at the last minute to attend both days. We visited Maam Reserve at Allansford, Lake Pertobe and Mt Emu Creek at Panmure. When visiting Lake Pertobe, Graeme noticed an unusual aquatic plant in the water and it turns out to be *Najas marina* or Holly-leaf Water-nymph. This plant is Critically Endangered in Victoria, it does occur in other states mainly in the north. I managed to get some good photos of the plant and send them to Neville Walsh at the Herbarium who happened to be travelling through to Portland today. I met him onsite and he collected some specimens to be pressed and preserved. The plant spends all its time in water, the roots grow into the sediment on the bottom while the plant itself never gets above water level. Photo bottom left shows a flower up close in the centre of the photo..

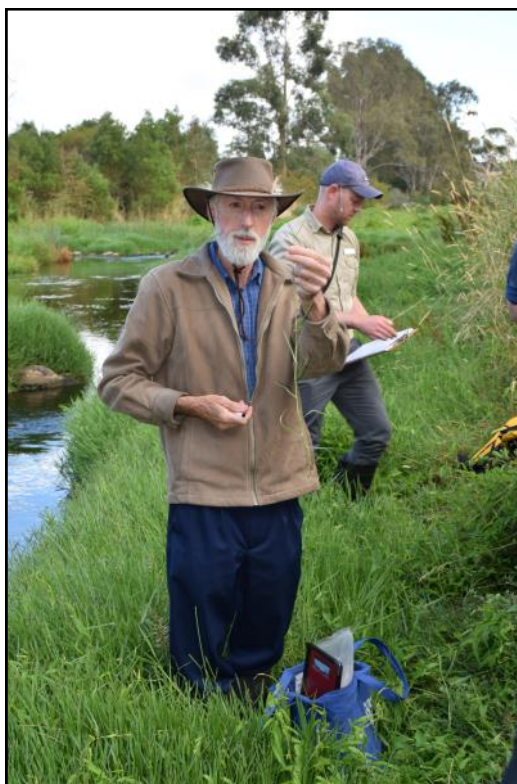
New Species Found At Lake Pertobe



Graeme also found another species: *Stuckenia pectinata* or Fennell Pond-weed growing in the water at Lake Pertobe. *Stuckenia pectinata* is an aquatic herbaceous plant with stems usually up to 100cm long. It is generally completely submersed, except for the reproductive spike that peaks above the water. It is nearly unbranched at the base, becoming freely branched towards the top. It is an almost cosmopolitan plant, found in most areas of the world including Britain but not recorded in Warrnambool before. Occurs in fresh to brackish or saline water, either still or fast flowing, of agricultural dams, lakes and creeks.

The flowers are wind pollinated and the seeds float. Tubers that are rich in starch are formed on the rhizomes. Reproduction can either be vegetative with tubers and plant fragments or sexual with seeds. The whole plant provides food for different species of waterbirds.

Dr Graeme Lorimer at Mt Emu Creek and Panmure.



Participants in the aquatic plant sessions run by Graeme Lorimer were mainly Landcare Facilitators and GHCMA employees, I was fortunate to be offered a place due to some late cancellations. On Thursday 10th, we travelled out to Panmure on the Mt. Emu Creek where we collected plants and discussed their identification. There is a mixture of native and introduced species.

On the next page, page 9, are some of the native species that I photographed.

Top row from left to right: *Bolboschoenus caldwellii* - Sea Club-moss, *Lycopus australis* - Australian Gypsy-wort, *Schoenoplectus tabernaemontani* - River Club-moss.

Lower row: *Bolboschoenus medianus* - Marsh Club-rush, *Lemna disperma* - Common Duckweed, *Juncus gregiflorus* - Green Rush, *Phragmites australis* - Common Reed.

Dr Graeme Lorimer at Mt Emu Creek and Panmure. - Plants Found



Signs Reprinted at Swan Reserve



Recently our information signs at Swan Reserve have been looking a bit faded and in need of rejuvenation. Thank you to John Sheely and Warrnambool City Council, the signs have been reprinted and look fantastic.

Great job done by Logos Ahead by printing onto an aluminium sheet and attaching it directly over the top of the original sign.

The original signs were erected in 2014/15 but the sun has taken its toll.

APS Victoria Shows, Conferences, Plant Sales and Other Items of Interest 2022

IMPORTANT PLEASE CHECK APS VICTORIAN WEBSITE FOR CANCELLATIONS

(For Distribution to Groups) – 7 February 2022 Special General Meeting via Zoom to change Statement of Purposes and Rules

5 March 2022 - APS Vic COM – hosted by APS Maroondah.
Senior Citizens Hall, 2-8 Laurence Grove, Ringwood East, 3135.

19 March 2022 – APS Yarra Yarra Autumn Plant Sale, Eltham Community & Reception Centre, Eltham. 10 am – 4 pm. Updated 25/10/21

19 & 20 March 2022 - Cranbourne Friends RBGV Spring Plant Sale. 10 am to 4 pm. Wide range of plants, plant list available one week before sale. Free entry.

Website: rbgfriendscranbourne.org.au

30/3/2022 – 3/4/2022 Melbourne International Flower & Garden Show (MIFGS.)

9 April 2022 - APS Geelong Australian Native Plant Sale, 'Wirrawilla', Lovely Banks. 8.30 am to 4.00 pm.

7 May 2022 - APS Mornington Peninsula Plant Sale. The Briars, Nepean Highway, Mt Martha 10 am to 3.30 pm.

14 May 2022 - APS Melton and Bacchus Marsh Plant Sale. 9am to 1pm.
The venue is expected to be St Andrews Uniting Church at Bacchus Marsh, to be confirmed.

June APS Vic COM – date to be advised. Hosted by APS Shepparton.

25 & 26 June 2022 – APS Ballarat Winter Flower Show. Flower show, plant sales etc. Robert Clark Centre, Ballarat Botanic Gardens, Gilles Street, Ballarat. 10 am – 4 pm.

16 & 17 July 2022 - Cranbourne Friends RBGV Spring Plant Sale. 10 am to 4 pm. Wide range of plants, plant list available one week before sale. Free entry. Website: rbgfriendscranbourne.org.au

APS Victoria Shows, Conferences, Plant Sales and Other Items of Interest 2022

1 September 2022 – Wimmera Biodiversity Seminar 2022. Details to follow.

3 Sept 2022 – APS Wilson Park (Berwick) Plant Sale, Wilson Botanic Gardens, Berwick in conjunction with City of Casey Garden Expo. Date to be confirmed.

11 – 16 September 2022, ANPSA Biennial Conference 2022 – Kiama, New South Wales. Preliminary details of the Conference, pre- and post-Conference tours and the beautiful town of Kiama can be found on the APS (NSW) website.

17 & 18 September 2022 – APS Bendigo Flower Show, Kangaroo Flat Primary School Gym, Freeman Drive, Kangaroo Flat, Bendigo. 9.30 am to 4.00 pm. \$5 entry, children free.

24 & 25 September 2022 – APS Loddon Murray host COM and Quarterly Gathering in Swan Hill.

1 & 2 October 2022 - APS Grampians Group Pomonal Native Flower Show, Pomonal Hall.

8 October 2022 - APS Echuca Moama Native Flower Showcase, Echuca Masonic Lodge Hall, 426 High Street, Echuca.

26 to 30 September 2022 - 7th Global Botanic Gardens Congress, Melbourne. *Influence and Action: Botanic Gardens as Agents of Change*. Includes a youth program for future gardens' leaders aged 18 to 24.

October 2022 – date to be advised. APS Ballarat **Spring** Flower Show. Flower show, plant sales etc. Robert Clark Centre, Ballarat Botanic Gardens, Gilles Street, Ballarat. 10 am – 4 pm.

15 & 16 October 2022 – 14th FJC Rogers Seminar. Topic: Fabulous peas (the typical 'pea-flowered' plants from the sub-family Faboideae). York on Lilydale in Mt Evelyn. Expressions of interest and queries to fabulouspeas2022@gmail.com

22 & 23 October 2022 - Cranbourne Friends RBGV Spring Plant Sale. 10 am to 4 pm. Wide range of plants, plant list available one week before sale. Free entry.