



VINTAGE HILL FARM

5643 HWY 87

FRANKLIN, MISSOURI 65250

(660) 848-2373

EXCEPTIONAL PLANTS FOR HOME & GARDEN

www.vintagehill.com



SPRING 2009

We Are Easy to Find!



Directions: Vintage Hill is located 6 miles NW of the Boonslick Bridge (downtown Boonville) on Hwy 87.

Register to Win a \$100 Gift Certificate!

A drawing for a \$100 Gift Certificate will be held on April 1, 2009.

Register at the farm March 1 thru March 31.

One registration per visit please. No purchase required.

MAILING LIST: If you would like to remain on or be added to our mailing list, please sign our guest book when visiting or phone, mail or email your name and address. Our mailing list is not for sale and your information is confidential. If you want to receive our E-newsletters, sign up for our e-mail list at www.vintagehill.com.

WEBSITE: www.vintagehill.com **E-MAIL:** info@vintagehill.com We respond to all email questions. If you do not receive a reply in a few days please send again. Be sure to include a subject heading in your message.

DISPLAY PLANTINGS/GARDENS: You are welcome to tour the gardens behind the farmhouse and planted beds surrounding the greenhouses during regular business hours. They are here for your enjoyment and education. They are always works in progress and, like you, we must balance the limited number of hours within a day, thus they are never finished. We routinely trial some of the best new plants here.

GIFT CERTIFICATES: These are available year-round and make ideal birthday, holiday or appreciation gifts. Credit card orders are welcome by phone/fax at 660-848-2373 or email: info@vintagehill.com.

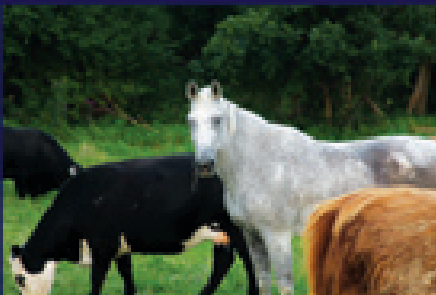
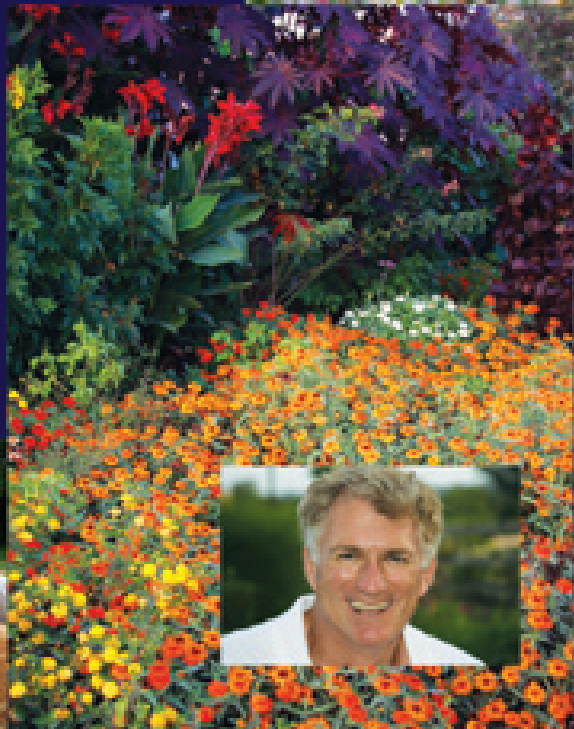
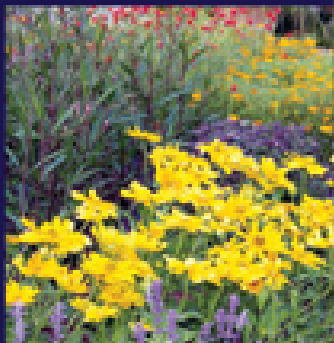
PLANT SELECTION AND AVAILABILITY: Over 1700 varieties of plants are offered and while every possible effort to have them all at all times is made, a particular variety may sell out, have a crop failure or be in-between marketable stages of a plant at any given time. As we propagate many of our plants, we can often tell you when a new crop will be available. Since so much depends on a plant's particular location, we can make no guarantee of its hardiness in any given zone but will be happy to give you our best advice based on our experience to help with your success.

WE GROW OUR PLANTS: The majority of our plants are grown right here at the farm.

Dear Gardening Friends,

As we enter into our 17th year sharing our little corner of paradise with you, our enthusiasm for beautiful things is fresher than ever. No matter what is going on in the world around us, there is no better therapy than putting one's hands in the soil and contemplating the beauty that is waiting to unfold. We are proud to continue offering some of the most unusual and unexpected botanicals in the Midwest. For anyone who appreciates nature — whether you have gardened for years or are just beginning— there is a bounty of beauty and inspiration just waiting for you to discover here at Vintage Hill. New this year, we are looking forward to sharing select garden and floral giftware to help the inside of your home look as beautiful as the outside as well as a multitude of choice new plants. Visit Vintage Hill and enjoy the vast selection of plants, trees, shrubs, and edibles grown just for you here in the scenic Missouri river hills.

Jeff Oberhaus



2009 HOURS:

Spring Season: Open Daily 9am-5pm March 1-June 30

Fall Season: Open Daily 9am-5pm September 1- October 31



2009 Garden of Knowledge Class Schedule

Sessions on some of your favorite garden topics. No registration fee, but **please pre-register** at least a day ahead. Call **660-848-2373** or email: **info@vintagehill.com** and we will put your name on a special savings coupon for items related to the topic, good for the day of the class. Class sizes are limited. Please register early for your spot.

Propagation March 14, 10:00am. Just how do we do it? A behind the scenes look at how to successfully take cuttings, sow seed and grow young plants.

Terrariums March 21, 10:00am They're back!! Once a big hit in the '70's, learn the latest in terrarium trends, an easy addition to bringing a little nature to your home.

Roses March 28, 10:00 am Easy to grow options for a rose garden. We'll discuss the modern and the antique varieties to make your garden come alive with roses as well as tips for easy care & fertilizing.

Fabulous Ferns April 4, 10:00 am Take a look at the latest offering of both hardy and tropical ferns for your home and garden.

Bonsai April 11, 10:00am. Members of the Columbia Chapter of Bonsai Growers will present a primer on bonsai selection, training and care. Come and view some of their incredible creations.

Shrubs for the Landscape April 18, 10:00 am. Been there, done that with yews and junipers? Jeff will show you some better options for creating the perfect landscape for your home.

Creative Containers April 25, 10:00am. Come and learn the Vintage Hill secrets for creative container combinations and how to make a WOW statement with season long color.



Abelmoschus manihot**Abutilon**

'Bella Pink Shades'

Acalypha

'Bourbon Street'

chenile trailing

'Cypress Garden Elf'

'Haleakala'

hoffmanii

'Kona Coast'

'Miltoniana Giant'

w. 'Macrophylla'

w. 'Marginata'

Agave

americana 'Mediopicta'

filifera

geminifolia

potatorium

victoria reginae

Ageratum

'Artist Blue'

'Blue Danube'

'Blue Horizon'

'Leilani Blue'

'High Tide Blue'

'High Tide White'

Alocasia:

'Borneo Giant'

'California'

'Frydek'

infernalis 'Kapit'

'Portora'

lauterbaachiana

metallica 'Nigra'

'Nishihira'

'Purpley'

'Sarian'

tigrina

Alogyne huegelii Blue**Alternanthera**

'Gold Thread'

'Partytime'

'Purple Knight'

'Red Thread'

Alyssum

'Easter Bonnet Mix'

'Snow Crystals'

'Wonderland Copper'

Amaranthus

c. 'Love Lies Bleeding'

'Illumination'

'Perfecta'

'Aurora'

Anagalis 'Mandarin',

'Wildcat Blue'

Angelonia

'Angelface Blue'

'Angelface White'

'Angelmist Lavender'

'Angelmist Spreading Pink'

'Angelmist White'

'Angelmist Spreading White'

'Serena Purple'

Anisacanthus

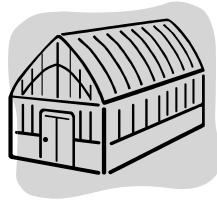
'Hummingbird'

Anisodonteia

'Elegant Lady'

Anthurium vietchii 'King'

'Waroquean'

Arctotis venusta**Artemisia** a. 'Sweet Annie'**Asclepias**

'Silky Gold'

'Silky Scarlet'

Asparagus

dens. 'Meyeri' Foxtail Fern

sprengeri (fern)

Aster 'Hulk'

'Matsumoto Blue'

Bacopa ' '**Basil**

'African Blue'

'Columnar'

'Dark Opal'

'Large Leaf Italian'

'Nufar'

'Pesto Perpetuooso'

'Purple Ruffles'

'Red Rubin'

'Valentino'

Begonia

'Anthole'

'BabyWing White'

'Bellfire'

'Bonfire'

'Dragon Wing Red'

'Dragon Wing Pink'

'Escargot'

foliosa

'Looking Glass'

'Miss Mummy'

'My Special Angel'

'Palomar Prince'

Begonia

partita

'Pink Polka Dot'

richmondensis

'Tiger Kitten'

'Tiny Gem'

'Wrightii'

Bells of Ireland**Bidens** 'Sun Kiss Yellow'**Bracteantha**

'Basket Bon Bon'

Browallia

'Blue, Silver & Sky Bells'

Brugmansia

arborea

'Cerise Wonder'

'Champagne Fizz'

'Culebra'

'Double Delight'

'Dr. Seuss'

'Ecuador Pink'

'Flamenco'

'Inca Sun'

'Isabella'

'Joli'

'Morgensonne'

'Mountain Treasure'

'Peanut'

'Pink Beauty'

'Pink Perfektion'

'Salmon Perfektion'

'Santa Rosa'

'Snowbank'

'Sunray'

'Super Nova'

versicolor

'Whiskers'

'Wretched Mess'

Caladium

'Candidum'

'Florida Sweetheart'

'Moonlight'

'Pink Beauty'

Calibracoe (Million Bells)

'Aloha Tiki Orange'

'Callie Deep Yellow'

'Superbells Apricot Punch'

'Superbells Cherry Blossom'

'Superbells Coral'

'Superbells Dreamscile'

'Superbells Plum'

'Superbells Red'

'Superbells Saffron'

'Superbells Trailing Lt Blue'

'Superbells Yellow Chiffon'

Calytophus 'Southern Belle'

Canna

'Australias'
'Erebus'
'Firecracker'
'Intrigue'
'Tropical Yellow'
'Tropical Red'
'Orange Punch'
'Pink Sunburst'
'Phasion'

Cardoon 'Grobe Gruen'**Celosia** 'Amigo Red'

'Amigo Yellow'
'Carmine Glow'
'Chief'
'Fresh Look Gold'
'Fresh Look Orange'
'Fresh Look Red'
'Fresh Look Yellow'
'Kosmo Purple'
'Kosmo Vanilla'
'New Look'
'Pink Candle'
'Prestige Scarlet'

Cerinth m 'Purpurescens'**Cestrum**

elegans 'Newelii'
'Orange Peel'
parquii

Cissus discolor

Cleome 'Cherry Queen'
'Sparkler Rose'
'Sparkler White'

Clivia 'Golden Dragon'**Codiaeum**

superba 'Pele's Fire'

Coleus**From Seed for Shade**

'Kong Mosaic'
'Kong Red'
'Kong Rose'

From Cuttings for Sun

Coleus 'Alligator'
Coleus 'Appaloosa'
Coleus 'Black Marble'
Coleus 'Black Prince'
Coleus 'Bronze Pagoda'
Coleus 'Camilla'
Coleus 'Careless Love'
Coleus 'Chocolate Mint'
Coleus 'Christmas Cheer'
Coleus 'Concord'
Coleus 'Cranberry Salad'
Coleus 'Crimson Velvet'
Coleus 'Copper'

Coleus 'Dapple Apple'
Coleus 'Dark Frills'
Coleus 'Defiance'
Coleus 'Dipt n Wine'
Coleus 'Downer's Ribbons'
Coleus 'Electric Lime'
Coleus 'Fancy'
Coleus 'Fishnet Stockings'
Coleus 'Flirtin' Skirts'
Coleus 'Haynes'
Coleus 'Heart'
Coleus 'Henna'
Coleus 'Inky Fingers'
Coleus 'Jack of Diamonds'
Coleus 'Japanese Giant'
Coleus 'Kingwood Kritter'
Coleus 'Kingwood Torch'
Coleus 'Kingwood Karnival'
Coleus 'Kiwi Fern'
Coleus 'Lemonade'
Coleus 'Lifeline'
Coleus 'Lime Burgundy
Flair'

Coleus 'Lime Parfait'

Coleus 'Lord Falmouth'

Coleus 'Marissa'

Coleus 'Midnight'

Coleus 'Molten Lava'

Coleus 'Molten Orange'

Coleus 'Mr. Murfles'

Coleus 'Penny'

Coleus 'Pineapple Queen'

Coleus 'Radical Butterbean'

Coleus r. 'Swinging Linda'

Coleus 'Religious Radish'

Coleus 'Rheingold'

Coleus 'Rustic Orange'

Coleus 'Sedona'

Coleus 'Schizophrenia'

Coleus 'Snowflake'

Coleus 'South of Border'

Coleus 'Splish Splash'

Coleus 'The Flume'

Colocasia

'Black Beauty'
'Chicago Harlequin'
'Jack's Giant'
'Pink China'
'Red Stem'
'Tea Cup'

Convolvulus 'Royal Ensign'**Cordyline** 'Red Star'

'Sundance'

Coreopsis

'Mahogany Midget'
Coriander/Cilantro

Cosmos

'Cosmic Orange'
'Cosmic Red'
'Pied Piper Red'

Crossula 'Campfire'

'Princess Pine'
'Variegated Jade'
'Silver Dollar Jade'
'Trailing Jade'

Crinum p. 'Splendens'**Cuphea**: 'Allyson'

'Dynamite'
'David Verity'
llavea (Bat Face)
'Plum Mist'
'Totally Tempted'
'Twinkle Pink'

Cymbalaria m. 'Globba'**Cymbopogon** Lemon Grass**Dahlia** 'Bishop's Children'

'Mystic Desire'

Datura 'Double Purple'

metalloids- Moonlily

Delosperma 'Fuchsia'**Dianthus**

'Amazon Rose Magic'
'Black Adder'
'Dulce White to Pink'
'Dynasty Purple'
'Purple Bouquet'
'Strawberry Parfait'
'Velvet N Lace'

Dichondra 'Emerald Falls'

'Silver Falls'

Dill 'Bouquet' 'Hercules'**Dusty Miller** 'Cirrus'

'New Look'

'Silver Dust'

'Silver Lace'

Echevaria

gigantea
'Lola'
metallica
'Silver Spoons'
'The Rose'

Emilia javanica**Ensete** 'Maurellii'**Epiphyllum** 'Red'

'Frühlinggold'
'Unforgettable'

Eucalyptus cineraria

citriodora

Euphorbia

characias 'Wulfenii'
'Diamond Frost'
millii 'Giant'

Evolvulus 'Blue Daze'

Ferns

- Australian Tree
- Boston
- Crocodile
- Fishtail
- Holly
- Jesters Crown
- Kangaroo Foot
- Macho
- Maidenhair
- Rabbits Foot
- Staghorn
- Tiger variegated

Fennel 'Bronze' 'Florence'

Ficus repens 'Variegata'
salicifolia

Furcrea 'Variegata'

Fuschia

- 'Angel Earrings Red Double'
- 'Cascading Angel Earrings'

Gaillardia 'Arizona Sun'

'Goblin'

Gazania

- 'Daybreak Rose Stripe'
- 'Kiss Rose'
- 'Tiger Mix'

Geranium

- 'Galleria Bright Violet'
- 'Galleria Pink Punch'
- 'Galleria Ruby Red'
- 'Galleria Sunrise'

Geranium Ivy

'Mini Cascade Pink'

Geranium Zonal

- 'Americana Rose Splash'
- 'Indian Dunes'
- 'Schoene Helena'

- 'Showcase Bright Red'
- 'Showcase Deep Scarlet'
- 'Showcase Deep Purple'
- 'Showcase White'
- 'Vancouver Centennial'

Geranium Zonal

- 'Americana Rose Splash'
- 'Indian Dunes'
- 'Schoene Helena'
- 'Showcase Bright Red'
- 'Showcase Deep Scarlet'
- 'Showcase Deep Purple'
- 'Showcase White'
- 'Vancouver Centennial'

Gomphrena

- globosa purple
- 'Buddy Purple'
- 'Gnome White'
- 'Lavender Lady'
- 'Strawberry Fields'



Grasses (not hardy)

Carex 'Toffee Twist'

Cyperus papyrus 'King Tut'

Juncus 'Big Twister'

'Blue Arrow'

'Curly Wurly'

e. 'Hedgehog'

'Javelin'

'Quartz Creek'

Melinis n. 'Ruby Crystal'

Nasella Mexican Feather

Pennisetum 'Jester'

'Prince'

'Princess'

'Purple Baron'

'Purple Majesty'

'Rubrum'

Scirpus Fiber Optic Grass

Stipa 'Cappriccio'

Gynura 'Purple Passion'

Hamelia patens

Hedera 'Needlepoint'

'Variegated Algerian'

Helenium 'Dakota Gold'

Helichrysum 'Licorice'

Heliotrope 'Atlantis'

'Mini Marine'

Hibiscus 'Maple Sugar'

Hypoestes

'Pink Splash'

'Red Splash'

'Rose Splash'

'White Splash'

Impatiens

'Accent Mystic Mix'
 'Blitz Pink'
 'Blitz Red'
 'Blitz Rose'
 'Blitz Violet'
 'Blitz White'
 'Blitz Salmon'
 'Dazzler Merlot Mix'
 'Dazzler Orange'
 'Dazzler Punch'
 'Dazzler Salmon'
 'Dazzler White'
 'Fanfare Blush'
 'Fanfare Bright Coral'
 'Fanfare Fuchsia'
 'Fanfare Orange'
 'Fanfare Orchid Improved'
 'Fiesta Apple Blossom'
 'Fiesta Stardust Pink'
 'Fiesta White'
 'Fusion Glow'
 'Fusion Peach Frost'
 'Infinity Blushing Lilac'
 'Infinity Dark Pink'
 'Infinity Lt Salmon'
 'Infinity Orange'
 'Infinity Pink'
 'Infinity Pink Frost'
 'Infinity Red'
 'Infinity Salmon'
 'Infinity Violet'
 'Infinity White'
 'Showstopper Cotton Candy'
 'Stardust Raspberry'
 'Tabboo Mix'
 'Tempo Butterfly Cherry'
 'Voodoo Mix'

Iochroma cyanea

fuschoides

Ipomea

'Blackie'
 'Marguerite'
 'Sweet Caroline Green/White'

Iresine

'Blazin Lime'
 'Blazin Rose'
 'Chicken Gizzard'
 'Purple Lady'
 'Sun Ray'

Ivy: Variegated Wax

Kalanchoe 'Big Mama'

'Jurassic'
 'orgyalis'
 'thrysisfolia'

Kale

'Chidori Red'
 'Chidori White'
 lancinata 'Dinosaur'
 'Redbor'

Kochia tryphylla

Lantana

'Ann Marie'
 'Candy Apple'
 'Fantasy'
 'Landmarck Rose Glow'
 'Landmarck Sunrise Rose'
 'Lucky Pinata'
 'Lucky Pot of Gold'
 'New Gold'
 'Radiation'
 'Red Spread'
 'Samantha'

Larkspur 'Giant Mix'

Laurus nobilis Bay Tree

Ledeboria socialis

Leea rubra

Leonotis menthaefolia

Linaria 'Spring Mix'

Lindernia grandiflora

Lisianthus 'Echo Pink'

Lobelia 'Regatta Marine Blue'

Lycianthes BluePotato Shrub

Lysimachia 'Outback Sunset'

Marigold 'Bonanza Bolero'

'Bonanza Harmony'

'Dwf. Janie Flame'

'Lady Mix'

'Lemon Gem'

'Marvel Yellow'

'Primrose Lady'

'Red Cherry'

'Sweet Cream'

'Sweet Mace'

'Zenith Yellow, Red, Orange'

Marjoram Sweet

Matthiola 'VintageMix' Stocks

Mecardonia 'Goldflake'

Melampodium 'Derby'

'Lemon Delight'

Mimulus 'Magic Mix'

'Maximus'

Mirabilis (Four o'Clock)

'Limelight'

Musa 'Pearl'

sumatra 'Rojo' Blood Banana

Mustard 'Red Giant'

Nasturtium 'Alaska'

'Empress of India'

Nemesia

'Bluebird'

'Opal Innocence'

Nicotiana a. 'Grandiflora'

'Domino Avalon Peach'

'Perfume Mix'

'Perfume Deep Purple'

'Saratoga Lime'

'Saratoga Red'

sylvestris

Nierembergia

'White Robe'

'Purple Robe'

Nigella 'Persian Jewels'

Origanum 'Golden'

'Kent's Beauty'

Osteospermum

'Lemon Symphony'

Oxalis 'Charmed Wine'

Pachypodium lamerii

Pachystachys lutea

Pachyveria succulent

Pansy

'Imperial Antique Shades'

'Matrix Blue Blotch'

'Matrix Ocean'

'Matrix Purple'

'Matrix Sunrise'

'Plentiful Yellow'

'Purple Rain'

Parsley 'Paramount'

Plain Italian

Pelargonium

'Citronella'

'Citronella Frosted'

'Mabel Grey'

'Mixed Scented'

'Prince Rupert'

sisoides

Palms

Bismarckia nobilis

Chamaerops humilis

Pheonix canariensis

Pheonix roebellini

Washingtonia robusta

Wodyetia bifurcata



Pentas

'Butterfly Deep Rose'
'Butterfly Lavender Shades'
'Butterfly Pink'
'Graffiti Red Lace'
'Graffiti Violet'
'Butterfly Red'
'Butterfly White'
'Stars and Stripes'

Peperomia 'Belly Buttons'**Peppers (ornamental)**

'Black Pearl', 'Calico', 'Chily Chili', 'Purple Flash', Shu, Variegated 'Jigsaw'

Petunia (from seed)

'Alladin Nautical Mix'
'Alladin Cherry Morn Mix'
'Dolce Fragolino'
'Dreams Patriot Mix'

Easy Wave 'Blue', 'Pink', 'Rosy Dawn', 'Shell Pink', 'White'

Waves 'Blue', 'Lavender', 'Misty Lilac', 'Pink', 'Purple', 'Rose'

Tidal Waves 'Tidal Wave Cherry', 'Tidal Wave Hot Pink', 'Tidal Wave Purple', 'Tidal Wave Silver'

Petunia (from cuttings)

'Potunia Dark Purple'
'Potunia Neon'
'Potunia Red'
'Supercal Terracotta'
Supertunia 'Bermuda Beach'
Supertunia 'Blue Sky'
Supertunia 'Bordeaux'
Supertunia 'Citrus'
Supertunia 'Cotton Candy'
Supertunia 'Double Peppermint'
Supertunia 'Mini Pink Vein'
Supertunia 'Raspberry Blast'
Supertunia 'Red'
Supertunia 'Royal Velvet'
Supertunia 'Bubble Gum'
Supertunia 'Vista Fuschia'
Supertunia 'Vista Silverberry'

Pilea 'Aquamarine'

'Baby Tears'

**Plectranthus**

'Emerald Lace'
fosteri 'Green on Green'
fosteri 'Variegata'
'Iboza'
'Mona Lavender'
'Troy's Gold'
'Silver Shield'

Plumbago 'Escapade Blue'
'Escapade White'

Pogostemon patchouli

Polygonum officinalis
'Kiss Over Garden Gate'

Portulaca

'Cinderella'
'Rio Scarlet'
'Rio Yellow'
'Margarita Mix'
'Stopwatch Yellow'

Ptilotus exaltatus 'Joey'

Pseuderanthemum atro marginatum

Rhipsalis

leucoraphis
paradoxa
tucumanensis

Ricinus c. 'Dwf. Purple'

Rudbeckia

'Autumn Colors'
'Cherokee Sunset'
'Cherry Brandy'
'Indian Summer'
'Irish Spring'
'Maya'
'Prairie Sun'
'Sonora'
'Tiger Eye Gold'
'Toto Mix'

Ruellia brittoniana

'Katie's Dwarf Pink'
'Ragin Cagin'

Russelia 'Night Life Tanagerine'

Salvia

'Black & Blue'
'Blue Bedder'
'Coral Nymph'
'Dancing Flame'
'Evolution'
discolor
'Fairy Queen'
'Forest Fire'
'Lady in Red'
leucantha
'Rhea'
'Silver White'
'Snow Nymph'
'Victoria Blue'
'Wild Thing'

Sanchezia nobilis 'Nana'

Sanvitalia 'Aztec Gold'

Scaevola 'Blue Ribbon' 'New Wonder'

Scoparia 'Melangolly Blue'

Scrophularia macrantha

Sedum mackinoi 'Ogon'

Senecio 'German Ivy'

'Macro-Variegatus'

Setcreasea 'Purple Queen'
'Tricolor'

Snapdragon

'Black Prince'
'Montego Mix'
'Ribbon Crimson'
'Rocket Mix'
'Rocket Red'
'Rocket White'

Solanum quitoense

Soleirolia s. 'Baby Tears', 'Macro Pool'

Spilanthes oleracea

Spinach 'Malabar Red'

Stapelia ambigua

Stevia rebaudiana

Streptocarpella 'Concord Blue'

Strobilanthes 'Persian Shield'

Summer Savory

Syngonium p. 'Roxanne'

Talinum p. 'Variegatum'

Tecoma stans 'Gold Star'
'Burnt Out'

Thalia geniculata 'Red Stem'

Thymophylla Dahlberg Daisy

Tillandsias Assorted

Tithonia 'Fiesta Del Sol'

Tolmiea Piggyback Plant

Torenia 'Catalina Gilded Grape'
'Summer Wave Blue'

Tradescantia 'Blushing Bride', 'Kartuz Giant'

Verbena

'Babylon White'
bonariensis
'Perfecta'
'Imagination'
'Lanai Peach'
'Quartz Blue'
'Superbena Coral Red'
'Superbena Lillac Blue'
'Superbena Pink Shades'
'Superbena Purple'
'Tukana Scarlet'

Vinca:

- 'Cooler Blush'
- 'Cooler Coconut'
- 'Cooler Pink'
- 'Cooler Red'
- 'First Kiss Blueberry'
- 'Mediterranean Deep Rose'
- 'Mediterranean Polka Dot'
- 'Nirvana Burgundy'
- 'Nirvana Pink Blush'
- 'Pacifica Really Red'

Vinca vine maculata

- 'Wojo's Gem'

Wedelia 'Outenwreath Gold'

Xanthosoma

- albomarginatum
- jeoquini 'Liniatum'
- sagittifolium
- 'LimeZinger'

Zinnia

- 'Crystal Orange'
- 'Crystal White'
- 'Magellan Orange'
- 'Magellan Coral'
- 'Magellan Yellow'
- 'Profusion Apricot'
- 'Profusion Cherry'
- 'Profusion Coral Pink'
- 'Profusion Deep Apricot'
- 'Profusion Double Cherry'
- 'Profusion Fire'
- 'Profusion Orange'
- 'Profusion White'
- 'Star Gold'
- 'Star White'
- 'Starbright Mix'
- 'Swizzle Cherry & Ivory'
- 'Swizzle Scarlet & Yellow'
- 'Uproar Rose'
- 'Zahara Yellow'
- 'Zahara Coral'
- 'Zahara Scarlet'
- 'Zowie Flame'



Pottery, Containers and Fountains

Choose from hundreds of unique and beautiful containers to meet your planting needs. Some of them are too pretty to plant! Bring the garden indoors by using your favorite garden pot or urn as a base to display one of our awesome new gazing balls. Planting a container gives you the ultimate flexibility in location. Move your planter for special events or rearrange for the best lighting. Check out our unique birdbaths, fountains, finely crafted stone statuary, cool new glazes and cast iron urns.



Annual Vines

- Cissus discolor** Rex Begonia
- Dalechampia** Bow-Tie
- Dicentra** scandens
- Dolichos** Hyacinth Bean
- Ipomea** 'Heavenly Blue'
- Cypress Vine
- 'Moon Vine'
- Mandevilla 'Parasol Sun Crimson'
- 'Parasol Giant White'
- Manettia** luteorubra Fire-cracker Vine
- Lophospermum** 'Wine Red'

Passiflora Passion Flower

- 'Blue Eyed Susan', 'Blue Bouquet', 'Lady Margaret', 'Royal Wedding'
- Senecio** 'Mexican Flame'
- Spinach** 'Malabar Red'
- Tetragium**: harmandii
- voinierianum
- Thunbergia**
- 'Sunny Lemon Star'
- 'Sunny Orange Wonder'
- 'Susie Orange'
- 'Susie White'
- Vigna** caracalla (Snail Vine)



Fruits and Vegetables

Are you familiar with the 'Slow Food' movement? It is a commitment to not eating anything grown very far from where you live. More than ever people are interested in knowing not just where their food comes from, but how it was grown. If you are wanting to grow more of your own garden veggies and fruits we are offering a larger selection than ever this year, not only with plants, but with fruiting trees and shrubs as well. As with our bedding plants, Vintage Hill vegetables are grown without growth regulators so you can be assured our plants are ready to take off and grow. Items marked **HL** are heirloom varieties. These are offered in single pots to help you try as many as possible. Enjoy a bountiful harvest and the peace of mind of knowing you are feeding yourself and your family uncompromised and nutritious food grown with your love

Artichoke

'Green Globe'

Asparagus

'Jersey Giant'

'Purple Knight'

Blueberry

'Chippewa'

'North Country'

Broccoli

'Southern Comet'

'Packman'

Cabbage

'Early Flat Dutch'

'Ruby Perfection'

'Stonehead'

Cantaloupe

'American Banana' **HL**

'Hales Best' **HL**

Cauliflower

Chard

'Bright Lights'

'Red Lights'

Cucumber

'Bianco Lungo'

'Burpless #26'

'Diva'

'Fanfare'

'Homemade Pickles'

'Long White' **HL**

'National Pickling' **HL**

'Suyo Long'

'White Wonder'

Eggplant

'Black Beauty'

'Ichiban'

'Rosa Bianca'

Leek 'King Richard'

Peppers

'Ancho San Martin'

'Big Bertha'

'Big Early'

'Blushing Beauty'

'California Wonder'

HL

'Corno Di Toro'

'Golden Summer'

'Gypsy'

'Habanero'

'Holy Mole'

'Hungarian Yellow'

Wax'

'Italian Gourmet'

'Jalapeno'

'Karma'

'LongRed Cayenne' **HL**

'Maraca Gold Mix'

'Park's Early Thickset'

'Pimento'

'Serrano'

'Sweet Banana'

'Sweet Rainbow Mix'

'Yolo Wonder'

Raspberry

'Bristol Black'

'Heritage'

Rhubarb

'Chipman Canada Red'

Spinach

'Malabar Red'

Squash

Yellow 'Multipik'

Zucchini 'Embassy'

Tomatillo

Toma Verde'



'Tomato

'Arkansas Traveler'

HL

'Beefy Boy'

'Better Boy'

'Big Beef'

'Black Krim' **HL**

'Brandywine' **HL**

'Carolina Gold'

'Celebrity'

'Champion'

'Container'

'Choice'

'Great White' **HL**

'Early Girl'

'Floramerica'

'Florida 91'

'German' **HL**

'Golden Sweet'

'Grape'

'Green Zebra' **HL**

'HealthKick'

'Jet Star'

'Lemon Plum' **HL**

'Mr. Stripey' **HL**

'Park's Whopper'

'Pink Razzleberry'

'Red Grape'

'Red Pear' **HL**

'Riesentraube' **HL**

'Roma'

'Roman Candle'

'Yellow'

'Rutgers' **HL**

'San Marzano'

'Sun Gold'

'Super Italian'

'Sweet 100'

'White Beauty' **HL**

'Yellow Pear' **HL**

Watermelon

'BlackDiamond' **HL**

'Crimson Sweet'

'Moon & Stars' **HL**

Fruit Trees: Apples 'Golden Delicious', 'Honeycrisp', 'Zestar', Plum 'Stanley', Apricot 'Sungold', Peach 'Elberta', Cherry 'Stella'



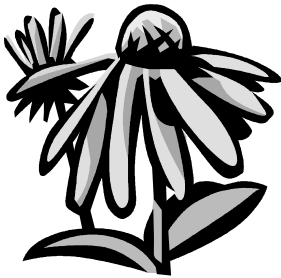
2009 Perennial Plant Association

Perennial of the Year: Hakone Grass

Hakonechloa aureola
This is an elegant grass variety best suited for shade in moist soil, rich in humus.

Previous PPA Selections

2008 Geranium 'Rozanne'
2007 Nepeta Walker's Low
2006 Dianthus 'FireWitch'
2005 Helleborus orientalis
2004 Anthyrium nipponicum
'Pictum' Japanese Painted Fern
2003 Leucanthemum 'Becky'
2002 Phlox p. 'David'
2001 Calamagrostis 'Karl Foerster'
2000 Scabiosa 'Butterfly Blue'
1999 Rudbeckia 'Goldsturm'
1998 Echinacea p. 'Magnus'
1997 Salvia 'May Night'
1996 Penstemon 'Husker Red'
1995 Perovskia atriplicifolia
1994 Astilbe 'Sprite'
1993 Veronica 'Sunny Border Blue'
1992 Coreopsis 'Moonbeam'
1991 Heuchera 'Palace Purple'



Acanthus spinosus

Achillea 'Red Velvet'

Aconitum 'Arendsii'

Adenophora lillifolia

Agastache 'Apricot Sprite'
'Blue Fortune'

'Heather Queen'

Ajuga 'Dixie Chip'

Alcea 'Black Beauty'

'Double Scarlet'

'Peaches & Dreams'

rugosa

zebrina

2009 Perennial Offerings:

Alchemilla mollis

Amsonia hubrichtii

tabernaemontana

Anchusa azurea

Anemone hupehensis

'Robustissima'

Angelica pachycarpa

Aquilegia 'Blue Jay'

'Grandmother's Garden'

Artemisia

'Powis Castle'

'Silver Brocade'

Aruncus dioicus

Aster 'Purple Dome'

'Woods Blue'

'Wood's Pink'

Astilbe

'Maggie Daley'

'Milk & Honey'

s. 'Sprite'

'Vision in Red'

Astrantia 'Venice'

Baptisia australis

'Purple Smoke'

Bergenia cordifolia

Bletilla striata

Brunnera 'Looking Glass'

macrophylla

Buddleia

'Adonis Blue'

alternifolia 'Argentea'

'Attraction'

'Bicolor'

'Black Knight'

'Peacock'

Callirhoe involucrata

Campanula 'Plum Wine'

Centaurea montana

montana 'Purple Heart'

Ceratostigma plumbagi-

noides

Convalaria majalis 'Rosea'

Coreopsis

'Full Moon'

'Little Sundial'

rosea 'Heaven's Gate'

'Moonbeam'

'Red Shift'

'Sierra Sunset'

'Sweet Dreams'

Corydalis lutea

Crambe cordifolia

Crocsmia

'Lucifer'

'Walberton Yellow'

Delosperma 'John Proffitt'

Delphinium

'Connecticut Yankee'

'Dwarf Blue Butterfly'

Dianthus:

'Cranberry Ice'

'Fire Witch'-2006 PPA

Dicentra 'Ivory Heart'

'King of Hearts'

spectabilis 'Alba'

spectabilis

Digitalis

'Candy Mountain'

'Excelsior Hybrids'

'Goldcrest'

obscura

'Lovin' Butter'

Echinacea

'All That Jazz'

'Fatal Attraction'

'Green Jewel'

'Harvest Moon'

'Magnus'

'Pink Double Delight'

'Primadonna Rose'

'Primadonna White'

'White Swan'

Edraianthus graminifolius

Epimedium

cantabrigiense

'Frohnleiten'

'Niveum'

Eryngium 'Blue Glitter'

'Jade Frost'

Eupatorium m. 'Gateway'

Euphorbia

'First Blush'

corollata

cyparissias

myrsinites

Fillipendula 'Rubra Venusta'

Ferns

Autumn Fern Brilliance

Christmas Fern

Frizelliae Fern

Holly Fern

Japanese Painted

Okanum Fern

Parsley Fern

Fragaria v. 'Variegata'

Gaillardia 'Arizona Sun'

'Fanfare'

'Oranges and Lemons'

'Tizzy'

'Tojaker'

Gaura l. 'Siskiyou Pink'

Geranium:

'Biokovo'
'Blue Blood'
'Elke'
'Hocus Pocus'
'Jolly Bee'
'Max Frei'
'Pink Penny'
'Purple Pillow'
'Rozanne' 2008 PPA
'Starman'

Glaucium flavum 'Extra'

Grasses

Arundo donax 'Variegata'
Calamagrostis brachytricha
'Karl Foerster'
Equisetum hyemale
Erianthus ravennae
Hakonechloa aurela
'Beni Kaze'
Spodiopogon sibiricus
Sporobolus heterolepsis
Imperata c. 'Red Baron'
Juncus 'Quartz Creek'

Miscanthus

'Dixieland'
'Graziella'

Ophiopogon 'Nigrescens'

Panicum 'Cheyenne Sky'
'Huron Solstice'

'Prairie Fire'

Gypsophilia 'Bristol Fairy'

Heliopsis 'Loraine Sunshine'

Helleborus 'Royal Heritage'

Hemerocallis

'Bella Lugosa'
'Golden Zebra'
'Happy Returns'
'Rosy Returns'
'Sir Modred'

Herniaria glabra 'Sea Foam'

Hesperis matronalis

Heuchera 'Black Out'

'Caramel'

'Green Spice'

'Lime Rickey'

'Marmalade'

'Midnight Rose'

'Miracle'

'Pinot Gris'

'Tiramisu'

'Ruby Bells'

'Snow Angel'

Hibiscus 'Fireball'

'Summer Snow'

'Luna Pink'

'Luna Red'

'Luna White'

Hosta

'Abiqua Drinking Gourd'

'Blue Mammoth'

'Blue Mouse Ears'

'Cameo'

'Dancing in the Rain'

'Fireworks'

'Flemish Sky'

'June'

'Love Pat'

'Maui Buttercups'

'Samurai'

'Sum and Substance'

'Wide Brim'

Iris ensata 'Variegata'

g. 'Immortality'

'Red at Night'

'Swingtown'

pseudoacorus

s. 'Caesar's Brother'

'Golden Edge'

'Super Ego'

'Top Notch'

'White'

pallida 'Aureo Variegata'

pallida 'Variegata'

Kirengashoma palmatum

Knautia macedonica

Kniphofia 'Flamenco'

Lamiastrum g. 'Florentinum'

Lavatera 'Barnsley Baby'

Lavendula 'Grosso'

'Hidcote Superior'

Leptinella 'Platt's Black'

Leucanthemum 'Aglaiä'

'Becky'

'Sante'

'Sonnenschein'

Liatris 'Eureka'

Ligularia

'Britt Marie Crawford'

'Little Rocket'

'Osiris Fantasy'

Lillium 'martegon Rubrum'

'Lollypop'

'Pimento'

Linum perenne

Lobelia cardinalis

Lysimachia

clethroides

n. 'Aurea'

Malva 'Blue Fountain'

Minuartia verna Irish Moss

Monarda 'Jacob Cline'

'Petite Delight'

Mukdenia rossii 'Karasuba'

Mum Rhumba - hardy

Harmony - hardy

Samba - hardy

Musa 'Basjoo' hardy banana

Nepeta catarica

'Walker's Low' 2007 PPA

Oenothera

k. 'Glowing Magenta'

macrocarpa

Ophiopogon 'Nigra'

Oxalis 'Rosea'

Peony

'Bartzella' yellow

'Duchess de Nemours' white

'Kansas' Red

'Scarlet O'Hara' single red

'Singin in the Rain' yellow

Tree Peony

'Hanakisoi - Pink

'Hoki' - Red

'Kinkaku' - Orange

'Kokuryu Nishiki' - maroon

'Shimanishiki' - Bicolor

'Yagumo' - Purple

Pardancanda 'Dazzler Mix'

Patrina 'Nagoya'

Penstemon 'Husker Red'

'Red Rocks'

Perovskia atriplicifolia

Physostegia 'Vivid'

Phlox: 'Blue Paradise'

'Peppermint Twist'

'Sherbert Cocktail'

Platycodon 'Sentimental

Blue'

Polemonium

'Snow & Sapphires'

Pulmonaria 'Blue Ensign'

Pyncanthenum muticans

Rosemary 'Irene'

'Madeline Hill'

Rudbeckia

'Goldsturm'

'Henry Eilers'

Salvia

argentea

'Caradonna'

'Eveline'

'Marcus'

pratensis 'Rhapsody in Blue'

Sanguisorbia menzii

Saponaria ocyroides

Scrophularia macrantha

Sedum ‘Angelina’
album
‘Black Jack’
‘Coral Reef’
hispanicum ‘Purpleum’
‘Blue Spruce’
‘Elizabeth’
‘Fireglow’
‘Matrona’
‘Octoberfest’
‘Red Cauli’
sexangulare
‘Xenox’

Sempervivum

‘Hen& Chicks Mix’
‘Cobweb’
c. ‘Mrs. Giuseppi’
‘Sanford Hybrid’
‘Silverine’

Senna hebecarpa

Sisyrinchium ‘Lucerne’

Stachys b. ‘Helen von Stein’
‘Hummele’

Symphytum ‘Goldsmith’

Teucrium chamaedrys

Thermopsis ‘Sophia’

Thymus serpyllum
vulgaris

Tiarella wherryi

Tricyrtis

f. ‘Dark Beauty’
h. ‘Variegata’
‘Miyazaki Hybrids’
‘Moonlight’
Veronica ‘Fairytale’
‘Red Fox’
r. ‘Sunshine’
‘Sunny Border Blue’
‘Ulster Blue Dwarf’
‘Waterperry Blue’

Yucca ‘Color Guard’

Zauschneria

‘Orange Carpet’

Perennial Vines

Akebia quintata

Bittersweet

‘Autumn Revolution’

Clematis:

‘Betty Corning’
‘Gravetye Beauty’
‘Henryi’

‘Jackmanii’

‘Kiri Te Kanawa’

‘Polish Spirit’

Sweet Autumn

montana rubens

‘The President’

Hydrangea petiolaris

Lonicera ‘GoldFlame’,

‘Major Wheeler’ Honeysuckle

Parthenocissus tricuspidata

Boston Ivy

Polygonum aubertii

Shisandra chinensis

Wisteria ‘Aunt Dee’



Herbs

Enhance your recipes and home with herbs from your own garden or containers. Grow it yourself and save! Relax knowing they came from your garden.

Aloe vera

Aloysia Lemon Verbena

Artemisia a. ‘Sweet Annie’

Artemisia French Tarragon

Basil

‘African Blue’

‘Columnar’

‘Dark Opal’

‘Holy Red’

‘Italian’

‘Mrs Burns’

‘Nufar’

‘Pesto Perpetuoso’

‘Pisto’

‘Red Rubin’

‘Spicy Bush’

‘Valentino’

Borago officinalis

Calendula

Calamintha ‘Variegata’

Catmint

Chamomile (German)

Chives

Coriander/Cilantro

Curry Dwarf

Lemon Grass

Dill ‘Bouquet’, ‘Hercules’

Eucalyptus citriodora

Fennel ‘Bronze’ ‘Florence’

Laurus nobilis Bay Tree

Lavender ‘Grosso’,

‘Edelweiss’, ‘Fernleaf’, ‘Fred

Boutin’, ‘Fringed’,

‘Goodwin Creek’, ‘Kew

Red’, ‘Twinkle Purple’

Marjoram Sweet Hardy

Mint ‘Chocolate’

‘Corsican’, ‘Kentucky Colo-

nel’, ‘Mojito’, ‘Orange’

Monarda citriodora

Oregano ‘Golden’,

‘Hot & Spicy’,

‘Italian’, ‘Kents Beauty’,

‘Noa’, Zataar

Parsley (curled)

Parsley (plain Italian)

Pogostemon patchouli

Rosemary ‘Barbeque’,

‘Irene’, ‘Madeline Hill’,

‘Spice Island’, ‘Tuscan Blue’

Sage officinalis,

‘Berggarten’

Sorrel ‘Red Veined’

Stevia sweetleaf

Summer /Winter Savory

Tarragon French Thyme

Doone Valley

English

Lemon

Lime

Mother of Thyme

Spicy Orange

Red Creeping

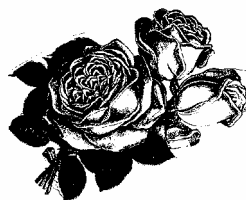
Sweet Woodruff

The ROSES of Vintage Hill

- Carefree Beauty**, 3x3', Medium coral pink, everblooming and good disease resistance.
- Carefree Wonder**, 3x3', Hot pink with a lighter reverse. Easy to grow.
- Prairie Harvest**, 3x3', Light yellow double flowers are richly fragrant.
- Prairie Sunrise**, 3x3', Yellow tinged in apricot flowers adorn this heavy bloomer.
- Winter Sunset**, 3x3', Deep yellow buds unfurl to blooms of amber brushed with orange.
- Ambridge Rose** 4x4', Double pink with a hint of salmon, superb fragrance.
- Mary Rose**, 3x3' Rich pink, good performer with honey and old rose scented blossoms.
- All The Rage**, 3x3', multicolored apricot blend, semi-double. Steady bloomer.
- Grandma's Blessing**, 2x2', Hardy pink tea-like flowers. Makes a nice low hedge.
- Macy's Pride**, 5x5', Hardy white rose with good disease resistance. NERS Award winner.
- Super Hero**, 3x3', Everblooming red fades to deep pink. Very hardy and self cleaning.
- Pink Pearls**, 1-3', Tough little blooming machine covered with multitudes of pearl flowers.
- Sunrise Sunset**, 2-3', Dense spreading habit with blended fuchsia-apricot roses.
- Sweet Fragrance**, 2-4', Tropical hues of coral and orange paint the sweetly fragrant flowers.
- Black Baccara**, Dark Red nearly black Hybrid Tea. Very unusual and ideal for cutting.
- Wild Blue Wonder**, 2006 AARS, Wavy petals of a warm wine purple color. Fragrant.
- Belle Pointevine**, 3x3', Antique lavender pink rugosa hybrid. Rich foliage.
- Champlain**, 4x4', A true performer, hardy Canadian red. Often blooms late in November!
- Chuckles**, 4x4', As cheery as its name, large single pink flowers laugh at the summer heat.
- Frau Dagmar Hastrup**, 3x3' Hardy rugosa but smaller. Pink, fragrant, everblooming.
- Golden Wings**, 4x4', Huge single yellow blooms fold up at night. Very fragrant.
- Hansa**, 4x4', 1905, Classic old double rugosa hybrid w/ dark magenta clove scented flowers.
- Knockout**, 3x3', AARS 2000, Cherry red flowers all summer. Hardy and disease resistant.
- Double Knockout**, Double flowered red knockout. Same excellent disease resistance.
- Pink Knockout**, Bright pink roses with good knockout qualities.
- Pink Double Knockout**, 4x4', Double hot pink flowers and the good qualities of Knockout.
- Sunny Knockout**, 5x4', Single light yellow with terrific everblooming qualities.
- Love and Peace**, A hardy tea rose with yellow flowers blushed with pink petals.
- Nearly Wild**, 3x3', A landscape classic. Medium pink covered in flowers all season.
- Polar Joy**, Tree Form. Finally--an own root hardy tree rose! Pink everblooming.
- Preference**, 3x3', Deep scarlet red non-fading and everblooming. Self cleaning.
- Rosa rubrifolia**, 5x5', Red foliage with dark canes. Small pink flowers in spring.
- Rosa rugosa**, 6x6', Pink single fragrant flowers in succession followed by hips.
- These Bugnet**, 5x5', Red canes, unusual foliage, pink flowers all summer. Old rose.

Climbing Roses

- Colette**, 8', Double pink very old fashioned blooms with great disease resistance.
- Fourth of July**, 8-10', Bicolor red and white with nonstop performance.
- Polka**, 10-12', Very fragrant peachy double flowers, with good hardiness and repeat flowering.
- Quadra**, 6x6, Large full deep red flowers, great disease resistance, recurrent bloomer.
- Ramblin Red**, 6-10', Hardy everblooming climber, double flowers.
- Seven Sisters**, from 1817, clusters of varying shades of pink roses on a hardy bush.
- William Baffin**, 8-10' Pink Canadian, super winter hardiness and recurrent bloom.
- Winners Circle**, 8-12', New from the breeder of Knockout! Sure to be a favorite, fire engine red climber blooms all summer and heat tolerant.



Shrubs, Trees, & Evergreens

Acer griseum
 rubrum 'October Glory'
 saccharum 'Fall Fiesta'
Asimina triloba PawPaw
Betula nigra 'Cinnamon Bark'
Callicarpa 'Isai' Beautyberry
Calycanthus floridus
Caragana arb. 'Pendula'
Caryopteris 'Sunshine Blue'
Catalpa 'Purpurea'
Cercis canadensis Redbud
Ceanothus 'Marie Simon'
Cephalanthus o. ButtonBush
Cercis canadensis Redbud
Cornus alba 'Ivory Halo'
 'Arctic Fire' 'Flaviramea'
 Yellow Twig Dogwood
Corylus avellana 'Contorta'
Cotinus 'Royal Purple'
 'Golden Spirit'
Deutzia 'Chardonay Pearls'
Diervilla l. 'Copper'
Eucommia ul. Hardy Rubber
Forsythia 'Northern Gold'
Fothergilla gardenia
FRUIT TREES (see page 11)
Ginkgo biloba 'Autumn Gold'
Hamamelis vernalis
Hydrangea:
 'Annabelle'
 'Blushing Bride'
 'Endless Summer'
 'Limelight'
 'Penny Mac'
 'Pinky Winky'
 quercifolia 'Little Honey'
 quercifolia 'Snow Queen'
Hypericum kalma St John
Ilex decidua
 v. 'Berry Heavy'
 v. 'Jim Dandy'
 v. 'Red Sprite'
 v. 'Southern Gentleman'
 v. 'Winter Red'
Itea v. 'Henry's Garnet'
 v. 'Little Henry'
Kerria j. 'Plena', 'Honshu'
Koelreuteria pan. GoldenRain
Liriodendron tulipifera
Maclura pom. Osage Orange
Magnolia virginiana
 'Ann'
 'Butterflies'
 v. 'Moonglow'
Malus 'PrairieFire'
Parrotia persifolia

Pecan (*Carya*) 'Pawnee',
 'Peruque', 'Posey'
Philadelphus 'Snowflake'
Physocarpus 'Coppertina'
 'Diablo'
 'Summer Wine'
Pseudolarix amabilis
Quirks macro Burr Oak
Rhamnus Fine Line
Rhus 'Tiger Eyes'
Salix caprea Weeping Tree
 i 'Hakura Nishiki'
 p. 'Nana'
Sambucus 'Black Lace'
Spirea:
 'Pink Parasols'
 prunifolia Bridalwreath
 n. 'Snowmound'
 vahhouitei Renaissance
Stephanandra 'Crispa'
Syringa (Lilacs)
 'Beauty of Moscow'
 m. Palibin (tree form)
 m. Palibin (Dw. Korean)
 'Chas Joly'
 'Primrose'
 'Sensation'
 reticulata 'Ivory Silk'
Taxodium ascendens Pond
 Cypress
Viburnum d. 'Autumn Jazz'
 d. 'Blue Muffin'
 'Emerald Triumph'
 x 'Juddi'
 opulum 'Compactum'
 opulum 'Roseum'
 'Pragensis'
Weigela 'Wine & Roses'
 'Eyecatcher'
 'Fine Wine'
Evergreens:
Buxus: Boxwood
 'Green Mountain'
 'Mont Bruno'
 'North Star'
 'Saskatoon'
 'Vardar Valley'
Chamaecyparis
 obtusa 'Verdoni'
 obtusa 'Lemon Twist'
 obtusa 'Nana Gracilis'
 obtusa 'Tsatsumi Gold'
 'Golden Pin Cushion'
 pacifier 'Mops'
 pisifera 'Vintage Gold'

Juniperus c. 'Compressa'
 'Limeglow'
 'Miniature'
 'Mother Lode'
 'Oblonga Pendula'
 procumbens Nana Std.
Picea: Spruce
 abies 'Acrocona'
 abies 'Clanbrassiliana'
 abies 'Cobra'
 abies 'Formanek'
 abies 'Kellersmans Blue'
 abies 'Lanham's Beehive'
 abies 'Pendula'
 abies 'Pumila'
 abies 'Rubra Spicata'
 abies 'Thumbelina'
 abies 'Tompa'
 brachytyla
 glauca 'Jean's Dilly'
 glauca 'Pixie Dust'
 glauca 'Sanders Blue'
 omorika 'Pendula'
 orientalis 'Early Gold'
 pungens 'Pendula'
 pungens 'Globe'
 sitchensis 'Tenas/Papoose'
Pinus Pine
 b. 'Rowe Arboretum'
 contorta 'Spaan's Dwarf'
 densiflora 'Globosa'
 densiflora 'Jane Kluis'
 flexilis 'Glauc Pendula'
 leucodermis 'Irish Bell'
 leucodermis 'Comp. Gem'
 leucodermis 'Mint Truffle'
 parv. 'Glauc Brevifolia'
Sciadopitys 'Joe Kozye'
 'Mitsch Select'
 'Winter Green'
Thuja Arborvitae
 o. 'DeGroot's Spire'
 o. 'Green Giant'
 o. 'Rushmore'
 'Mr Bowling Ball'
 'Spring Grove'
 plicata 'Whipcord'
Tsuga Hemlock
 'Albospica'
 'Cole's Prostrate'
 'Gentsch White'
 'Jean'



About Planting, Soil, Weeds & Mulch

Good planting begins with good soil preparation. Soils in our mid-Missouri area vary widely and we are often asked for advice on just what to do with a particular soil. One of the most common problems in our area is an abundance of clay soil. Clay soil tends to be really wet or really dry and it takes an addition of organic matter to start to improve it. Some believe it is best to dig out the clay and replace it with good topsoil. The reason this does not always work lies in the makeup of clay soil. By nature it is very dense so when you dig out a hole for a plant and fill it with good topsoil, often what happens is you have created a "bathtub". Water easily flows into the topsoil but stops when it hits the clay surroundings, leaving the hole full of water with little drainage. This is the common cause of death among a lot of plants and what hard work it was digging in that clay! An easier option is to create a raised planting area. This does not have to be a berm or require landscape timbers or retaining walls. Adding a 6-10 inch layer of good topsoil is ample for most plants to get a good start and they can gradually extend roots into the native soil to help anchor them. Edge this bed with a 4" trench around it and fill with mulch after planting. This will make for easy mowing and eliminate the need for a weed eater. Raising plants up in their planting hole in clay soil is another way to help them get started successfully. Instead of digging the hole the depth of the pot the plant came in, dig it only half as deep and add topsoil around the plant to make up the difference.

If you are lucky enough to garden with good soil, you can always improve it by adding organic matter. Organic matter for gardens is usually peat moss, aged manure, or compost. We have had excellent success with a horse manure and sawdust combination. Whatever your choice of organic matter, add a few inches to the planting bed and till it in deeply. Organic matter improves the water holding capacity of soil and also improves drainage by adding air space to the soil. Have you ever wondered about a plant tag that says "Moist, well drained"? This comes from a soil or potting mix that has good organic matter content. Air in the soil is an important component, so after your beds are tilled and fluffed try not to walk on them.

Planting is as simple as parting the earth in a well prepared planting bed. After planting, top dress with a slow release fertilizer such as Osmocote to gradually feed your plants for months. Pre-emergent herbicides can also be beneficial for preventing weed seeds from germinating.

Add a 2-4" deep layer of mulch after planting. Mulch helps keep the prepared soil from compacting during hard rains. As it breaks down, it becomes beneficial organic matter. Of course it also helps insulate the soil from temperature extremes, suppresses weed growth and looks attractive. Types of mulch vary widely. Generally, bulk is less expensive than bags and as far as type is concerned each has specific advantages and disadvantages. Pine bark mulch is our mulch of choice as it is often added to the better potting soils and we tend to look at our beds as big containers. Mulches are available with a variety of color dyes. While this is a matter of personal choice, natural beauty is hard to compete with and we recommend an earth toned mulch.

We never use a weed mat or plastic under mulch as it serves as a barrier to the natural enrichment of the soil as mulch decomposes. For the same reasons, mulching with rock is not a good idea and makes for a lot of labor when the landscape eventually needs renovating. If you have a particularly high number of weed seeds in an area, putting down a layer or two of newspaper under your mulch will help suppress weeds until the plants get a good start. The paper will disintegrate and allow the mulch to function as planned.

New plantings need regular watering. Until the roots have time to get established in the surrounding soil, you will need to supplement water. Be sure to check plants on warm windy days. A good rule of thumb is for new plantings to receive an inch of water per week either thru rainfall or irrigation. When watering always water deeply and thoroughly.

Spring 2009 Seasonal Hours:

Open Daily 9 a.m.—5 p.m. March 1-June 30 (Including Holidays)

While you are in the area...

Vintage Hill Farm is located in the Boone's Lick area of central Missouri, a virtually undiscovered haven for the tourist. People here are friendly, prices are reasonable, and there are so many beautiful things to do while here; why not take an extra day or two?

A couple of favorites: Just up the road, then left on 187, is the Boone's Lick State Historic Site. Trails wind down to the spring where Daniel Boone's sons boiled water from the salty springs in huge pots to make salt. If you head back to Highway 87 and North you will find Glasgow, a quaint and scenic little river town with many old homes and nice shops. East is Fayette, our county seat, with the historic courthouse square. Fayette is also home to Central Methodist University and the Ashby Hodge Art Gallery, (660) 248-3391. Be sure to eat at Emmett's Kitchen and Tap (660) 248-3363 on the square.

Complete the circle back to New Franklin and stock up at a real quality small town butcher shop, Jennings Premium Meats (800) 210-6425. Do not miss Snoddy's Store, since 1924, on your way back. It is one of the few remaining family owned small general stores. Across the bridge, over the Missouri River, is historic Booneville just on your left is the meticulously restored Hotel Frederick, www.hotelfrederick.com (660)-882-2828. Main Street is full of shops, a fantastic antique mall, small restaurants and a nearby casino.

Just 20 minutes east is the charming old town of Rocheport. Check out rocheport.com for the complete list. You can stay at the Yates House B&B (573) 698-2129 and they will give you the details of the many fine antique shops while you stroll through their beautiful walled gardens. Richard Saunders Antiques (573) 698-3765 has a great courtyard garden in a beautiful old brick home that should be visited. If antiquing is your thing, White Horse Antiques is a must see also. Stop in the Rocheport General Store (rocheportgeneralstore.com) for a bite to eat—everything is made from scratch and you can enjoy sitting in the turn of the century dining hall. Have a great dinner at Les Bourgeois Winery and Bistro (573) 698-2300 just a few miles out of town on the river bluffs. The view is as tantalizing as the food and is a great place to watch a sunset while overlooking the river.

Head west to visit Arrowrock and Blackwater. Arrowrock has a state historic site as well as many interesting shops and buildings. The Lyceum Theatre is a great way to spend an evening. Stay at the Arrow Rock Bed and Breakfast (660)-837-3280. Plan on touring award winning Blackwater's revitalized main street that serves as an example for many small towns to follow. The endearing people who have worked for this are a great example of the overwhelming good and beauty that can come from having your heart in the right place. Along with antique shops, there is the Chateau Garden located in what was a vacant storefront on Main Street. Enjoy elegant overnight surroundings at The Iron Horse Inn (660) 846-3001 or have a relaxing meal at the Iron Horse Restaurant.

If heading home takes you eastward, we are only 30 minutes from Columbia. From daylight to dark stop off at Shelter Gardens just off Broadway. The University of Missouri has been designated a Botanic Garden. The campus is alive with great plantings, including some innovative tropicals and annuals, many from Vintage Hill Farm. While you are close to downtown, stop in at Ala Campagne (573) 815-9464 on Broadway for a great selection of international art, antiques and home furnishing. The owners are garden enthusiasts and their sense of style is incomparable.

Pick up your products from **Goose Creek Farms** Saturdays at Vintage Hill. Locally raised pasture chicken broilers, free range eggs, all natural beef and goat meat, pasture raised turkeys, in season vegetables. Taking orders, deposit required. Call Matt and Paula Volkmann, (660)-848-2012.

