

2019-2020

Dianthus

Industry Leader in Dianthus Production

Choose from an extraordinary selection of almost 200 varieties, ranging from exciting new varieties to tried and true garden favorites.

- Wide range of vibrant colors, patterns, flower forms and liner sizes
- The best genetics from 12 breeders around the globe
- In-house, TC-based, clean stock program for unrooted & liner production of 100+ varieties
 - Strict sanitation and harvest protocols to ensure disease-free production
 - URC cold-chain management from harvest to delivery



Dianthus American Pie[®] 'Cherry Pie'

Dianthus Rooted Liners

All varieties are available as rooted liners through any of our distributor partners. Liner size options range from a small 288 seed-produced plug or 200-cell vegetative liner, to our standard 72-cell liner. See the product forms column on the following pages for variety-specific size information.

Dianthus Unrooted Cuttings

We are now excited to offer the following Dianthus varieties as unrooted cuttings. This product form is best suited for those customers who have propagation space and are looking for the least expensive input. Order minimums are 100 cuttings per variety, 2500 per order. Unrooted Dianthus orders ship via Federal Express Priority Overnight.



NEW! 'Pink Fire'

The following are available as unrooted cuttings through all of our **distributor partners**:

From Concept Plants:

- **NEW!** *Dianthus gratianopolitanus* **Mighty Mini**[™] Miss Rose
- *Dianthus gratianopolitanus* **Vivid**[™] Bright Light
- **NEW!** *Dianthus gratianopolitanus* **Vivid**[™] Cherry Charm

From Danziger:

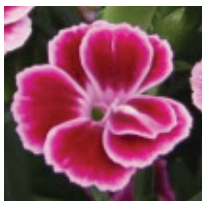
- **NEW!** *Dianthus* Delilah[™] Series

From Darwin Perennials:

- *Dianthus* Mountain Frost[™] Collection

From Plants Nouveau:

- **NEW!** *Dianthus gratianopolitanus* 'Pink Fire'



Pink Kisses[™]

The following are available as unrooted cuttings only through the **sales channels** listed below:

From HilverdaKooij:

- *Dianthus* **Flow**[®] Series (order from Flamingo Holland)

From KiwiFlora and ThinkPlants[™]:

- *Dianthus* **Scent** from Heaven Series (order from Express Seed)

From PlantHaven and Pinks by Whetman:

- *Dianthus* **Early Bird**[™] Series (order from Express Seed, McHutchison, Inc., or Vaughan's Horticulture)

From Selecta:

- *Dianthus* **Dianthalot**[™] Series (order from Ball Seed)
- *Dianthus* **EverLast**[™], **Oscar**[®], and **SuperTrouper**[™] Series (order from Ball Seed)
- *Dianthus* **Pink Kisses**[™] (order from Ball Seed)

For help with variety selection and production planning, refer to our **Dianthus production guide** available at <http://www.gplants.com/products/featured-products>.

The **spring bloom progression** listed is based on information from the breeders and the natural response in our Lancaster, PA trials. For outdoor production, typical response begins in early spring and peaks in mid-spring for most varieties. Exact timing will vary based on environmental conditions. New breeding makes year round production and flowering an option for some varieties.

American Pie® Collection



'Bumbleberry Pie' **NEW!** 'Cherry Pie' 'Georgia Peach Pie' 'Key Lime Pie'

Collection includes 4 varieties with very large flowers in amazingly delicious colors. Flowers are held on non-flopping, sturdy stems, and make long-lasting cut flowers. From Pinks by Whetman and PlantHaven.

Variety	Description	Vern Code	USDA Hardiness Zone	AHS Heat Zone	Pot Size	Spring Bloom Progression	Growing Schedules	Product Forms
'Bumbleberry Pie' USPPAF	11". Saturated rose-pink blooms with unique vivid pink centers.	B-VB	Z5	H9-1	Qt, 1 Gal	Early-Mid	A, B	200, 162, 128, 72
NEW! 'Cherry Pie' USPPAF	11". Large, rich, cherry-red, fragrant flowers. Repeat blooming.	B-VB	Z5	H9-1	Qt, 1 Gal	Early-Mid	A,B	200, 162, 128, 72
'Georgia Peach Pie' USPPAF	11". Palest blush pink blooms with unique coral centers.	B-VB	Z5	H9-1	Qt, 1 Gal	Early-Mid	A, B	200, 162, 128, 72
'Key Lime Pie' USPPAF	11". Pure white blooms with unique green centers.	B-VB	Z5	H9-1	Qt, 1 Gal	Early-Mid	A, B	200, 162, 128, 72

Barbarini® Series



Purple Purple Bicolor Red Red Picotee Rose Mix

Versatile, first-year flowering series from seed. Compact, branching habit. Can be programmed to flower from April to September.

Variety	Description	Vern Code	USDA Hardiness Zone	AHS Heat Zone	Pot Size	Spring Bloom Progression	Growing Schedules	Product Forms
barbatus Barbarini®	8-10". Available in Purple, Purple Bicolor, Red, Red Picotee, Rose, or a Mix. Seed-produced.	N/A	Z3-8		Qt, 1 Gal	Mid	B, C, F, K	288, 128, 72

Beauties® Series



Anabelle Kate Sasha Yfke

Fresh, bright colors. Long-lasting with excellent re-bloom. Suitable for pots or garden. From HilverdaKooij and Dummen Orange®.

Variety	Description	Vern Code	USDA Hardiness Zone	AHS Heat Zone	Pot Size	Spring Bloom Progression	Growing Schedules	Product Forms
Anabelle	4-6". White flowers.	NR	Z3-9		Qt, 1 Gal	Early-Mid	A, B, C, I, K	128, 72
Kate	4-6". Magenta flowers.	NR	Z3-9		Qt, 1 Gal	Early-Mid	A, B, C, I, K	128, 72
Sasha	4-6". Violet flowers.	NR	Z3-9		Qt, 1 Gal	Early-Mid	A, B, C, I, K	128, 72
Yfke	4-6". Lavender-purple flowers.	NR	Z3-9		Qt, 1 Gal	Early-Mid	A, B, C, I, K	128, 72

NEW! Constant® Beauty Series

This heat-tolerant series will flower constantly, even in the heat of the summer. The series includes a full color range of double flowers with a subtle fragrance. First-year flowering. From Green Fuse™ Botanicals.

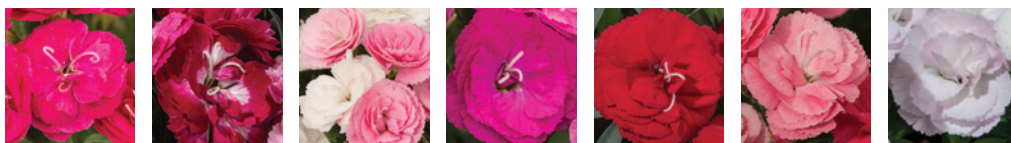


Crush Burgundy Crush Cherry Crush Orange Crush Pink Crush Rose Red White

Variety	Description	Vern Code	USDA Hardiness Zone	AHS Heat Zone	Pot Size	Spring Bloom Progression	Growing Schedules	Product Forms
Crush Burgundy	4-6". Burgundy & light-pink bicolor.	NR	Z4		Qt, 1 Gal	Early, Mid, Late	A, B, E	128, 72
Crush Cherry	4-6". Cherry-red & pink bicolor.	NR	Z4		Qt, 1 Gal	Early, Mid, Late	A, B, E	128, 72
Crush Orange	4-6". Orange & white bicolor.	NR	Z4		Qt, 1 Gal	Early, Mid, Late	A, B, E	128, 72
Crush Pink	4-6". Pink & burgundy bicolor.	NR	Z4		Qt, 1 Gal	Early, Mid, Late	A, B, E	128, 72
Crush Rose	4-6". Dark rose & dark-pink bicolor.	NR	Z4		Qt, 1 Gal	Early, Mid, Late	A, B, E	128, 72
Red	4-6". Red.	NR	Z4		Qt, 1 Gal	Early, Mid, Late	A, B, E	128, 72
White	4-6". White.	NR	Z4		Qt, 1 Gal	Early, Mid, Late	A, B, E	128, 72

NEW! Constant® Cadence Series

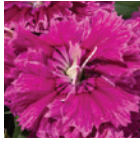
A uniform series with fully double, highly fragrant flowers. Excellent garden performers with the look of a pot carnation. First-year flowering, easy to finish any time of year. From Green Fuse™ Botanicals.



Cherry Milk Cherry Peach Milk Raspberry Red Salmon White

Variety	Description	Vern Code	USDA Hardiness Zone	AHS Heat Zone	Pot Size	Spring Bloom Progression	Growing Schedules	Product Forms
Cherry	6-10". Bright rose.	NR	Z4		Qt, 1 Gal	Early, Mid, Late	A, B, E	128, 72
Milk Cherry	6-10". Burgundy/rose/white	NR	Z4		Qt, 1 Gal	Early, Mid, Late	A, B, E	128, 72
Peach Milk	6-10". Shades of rose, pink & white.	NR	Z4		Qt, 1 Gal	Early, Mid, Late	A, B, E	128, 72
Raspberry	6-10". Hot raspberry.	NR	Z4		Qt, 1 Gal	Early, Mid, Late	A, B, E	128, 72
Red	6-10". Deep red.	NR	Z4		Qt, 1 Gal	Early, Mid, Late	A, B, E	128, 72
Salmon	6-10". Light pinkish-salmon.	NR	Z4		Qt, 1 Gal	Early, Mid, Late	A, B, E	128, 72
White	6-10". Pinkish-white.	NR	Z4		Qt, 1 Gal	Early, Mid, Late	A, B, E	128, 72

NEW! Constant® Promise Series



Raspberry



Strawberry



White

A cross between *D. chinensis* and *D. barbados*, featuring extra-large, double, fragrant flowers. Plants flower freely even in hot temperatures, and will not seed, resulting in a long flowering period. First-year flowering, easy to schedule. From Green Fuse™ Botanicals.

Variety	Description	Vern Code	USDA Hardiness Zone	AHS Heat Zone	Pot Size	Spring Bloom Progression	Growing Schedules	Product Forms
Raspberry	10-12". Raspberry-red.	NR	Z4		Qt, 1 Gal	Early, Mid, Late	A, B, E	128, 72
Strawberry	10-12". Strawberry-red.	NR	Z4		Qt, 1 Gal	Early, Mid, Late	A, B, E	128, 72
White	10-12". White.	NR	Z4		Qt, 1 Gal	Early, Mid, Late	A, B, E	128, 72

NEW! Delilah™ Series



Bicolor Magenta



Bicolor Purple



Magenta



Purple

This easily programmable *plumarius* series includes 4 compact varieties with small, semi-double flowers in vibrant colors. Plants do not benefit from a cooling period, so can be produced to have in flower from Spring to early Fall. From Danziger and ThinkPlants™.

Variety	Description	Vern Code	USDA Hardiness Zone	AHS Heat Zone	Pot Size	Spring Bloom Progression	Growing Schedules	Product Forms
Bicolor Magenta USPPAF	10". Magenta & white bicolor.	NR	Z4-9		Qt, 1 Gal	Early, Mid, Late	A, B, C, F, H, I	128, 72, URC
Bicolor Purple USPPAF	10". Purple bicolor.	NR	Z4-9		Qt, 1 Gal	Early, Mid, Late	A, B, C, F, H, I	128, 72, URC
Magenta USPPAF	10". Magenta.	NR	Z4-9		Qt, 1 Gal	Early, Mid, Late	A, B, C, F, H, I	128, 72, URC
Purple USPPAF	10". Purple.	NR	Z4-9		Qt, 1 Gal	Early, Mid, Late	A, B, C, F, H, I	128, 72, URC

Devon Cottage™ Series



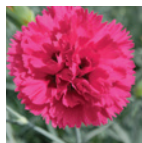
Bright Eyes



Rosy Cheeks



Ruby's Tuesday

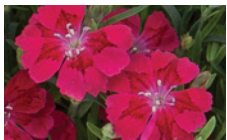


'Waterloo Sunset'

Large flowers, silver-blue foliage, and lengthy bloom period. Perfect as cut flowers or for an English-style cottage garden look. From Pinks by Whetman and PlantHaven.

Variety	Description	Vern Code	USDA Hardiness Zone	AHS Heat Zone	Pot Size	Spring Bloom Progression	Growing Schedules	Product Forms
Bright Eyes USPP# 20628	14-18". Double white with dark red eye.	B-VB	Z5-9	H9-1	1 Gal, 2 Gal	Late	A,B	128, 72
Rosy Cheeks USPP# 14045	14-18". Double deep coral pink.	B-VB	Z5-9	H9-1	1 Gal, 2 Gal	Late	A,B	128, 72
Ruby's Tuesday USPP# 13872	14-18". Double crimson red.	B-VB	Z5-9	H9-1	1 Gal, 2 Gal	Late	A,B	128, 72
'Waterloo Sunset' USPP# 21080	12". Double fuchsia with dark red eye.	B-VB	Z5-9	H9-1	1 Gal, 2 Gal	Late	A,B	128, 72

NEW! Dianthalot™ Series



Dark Red+Star



Pink+Star

A reblooming, super-touch, spreading groundcover series. Plants have their biggest flush in the Spring then rebloom throughout the summer. An excellent fast crop for Spring. Well-suited for large pots. From Selecta.

Variety	Description	Vern Code	USDA Hardiness Zone	AHS Heat Zone	Pot Size	Spring Bloom Progression	Growing Schedules	Product Forms
Dark Red + Star USPP#27905	8-12". Red with darker red star in center.	NR	Z5a		Qt, 1 Gal	Early, Mid, Late	A, B, E	200, 162, 128, 72, URC
Pink + Star USPP#27816	8-12". Medium pink with darker pink star in center.	NR	Z5a		Qt, 1 Gal	Early, Mid, Late	A, B, E	200, 162, 128, 72, URC

Early Bird™ Series



Chili Fizzy Frosty Radiance Sherbet

Early flowering, fragrant and compact. Perfect for quarts and will also work in 1 gallon containers. From Pinks by Whetman and PlantHaven.

Variety	Description	Vern Code	USDA Hardiness Zone	AHS Heat Zone	Pot Size	Spring Bloom Progression	Growing Schedules	Product Forms
Chili USPP# 24363	6-7". Double coral-red flowers.	B-VB	Z5-9	H9-1	Qt, 1 Gal	Early	A, B, F, H	200, 162, 128, 72
Fizzy USPP# 21394	6-7". Double lavender with red eye.	B-VB	Z5-9	H9-1	Qt, 1 Gal	Early	A, B, F, H	200, 162, 128, 72
Frosty USPP# 23894	6-7". Double white.	B-VB	Z5-9	H9-1	Qt, 1 Gal	Early	A, B, F, H	200, 162, 128, 72
Radiance USPP# 21824	6-7". Double red.	B-VB	Z5-9	H9-1	Qt, 1 Gal	Early	A, B, F, H	200, 162, 128, 72
Sherbet USPP# 21418	6-7". Double pink.	B-VB	Z5-9	H9-1	Qt, 1 Gal	Early	A, B, F, H	200, 162, 128, 72

EverLast™ Series

Early, fragrant, and long-blooming series with an extensive color range. Plants flush in early Spring, bloom late into Summer, then re-flush again in Autumn. Upright habit. Excellent garden performance. From Selecta One.



Burgundy Blush Dark Pink Lavender + Eye Lilac + Eye Orchid **NEW!** Raspberry Cream **NEW!** Red + Pink White + Eye

Variety	Description	Vern Code	USDA Hardiness Zone	AHS Heat Zone	Pot Size	Spring Bloom Progression	Growing Schedules	Product Forms
Burgundy Blush USPP# 23150	8-12". Double deep burgundy with a light pink edge.	B-VB	Z5-10	H9-4	Qt, 1 Gal	Late	A, B, F, H	200, 162, 128, 72, URC
Dark Pink USPP# 23362	8-12". Double dark pink with lighter pink edge.	B-VB	Z5-10	H9-4	Qt, 1 Gal	Late	A, B, F, H	200, 162, 128, 72, URC
Lavender + Eye USPP# 23330	8-12". Double lavender with a red eye.	B-VB	Z5-10	H9-4	Qt, 1 Gal	Late	A, B, F, H	200, 162, 128, 72, URC
Lilac + Eye USPP# 23318	8-12". Double pink with a large red eye. Colors can shift depending on light and temperature.	B-VB	Z5-10	H9-4	Qt, 1 Gal	Late	A, B, F, H	200, 162, 128, 72, URC
Orchid USPP# 23364	8-12". Double orchid-pink.	B-VB	Z5-10	H9-4	Qt, 1 Gal	Late	A, B, F, H	200, 162, 128, 72, URC
Raspberry Cream	8-12". Single magenta with a pink edge.	B-VB	Z5-10	H9-4	Qt, 1 Gal	Late	A, B, F, H	200, 162, 128, 72, URC
Red + Pink	8-12". Semi-double pink and red.	B-VB	Z5-10	H9-4	Qt, 1 Gal	Late	A, B, F, H	200, 162, 128, 72, URC
White + Eye USPP# 23363	8-12". Double white with a pale pink eye.	B-VB	Z5-10	H9-4	Qt, 1 Gal	Late	A, B, F, H	200, 162, 128, 72, URC

NEW! Flow® Series

A contemporary, programmable series of pot carnations with extremely large, double flowers in unique colors. Dark green foliage; compact habit. Easy to produce. From HilverdaKooij and Dummen Orange.



Variety	Description	Vern Code	USDA Hardiness Zone	AHS Heat Zone	Pot Size	Spring Bloom Progression	Growing Schedules	Product Forms
Apella Beach®	6-7.5". Lime green.	NR	Z6-9		Qt, 1 Gal	Early, Mid, Late	L	128, 72, URC
Blinky Beach®	6-7.5". Deep rose.	NR	Z6-9		Qt, 1 Gal	Early, Mid, Late	L	128, 72, URC
Bondi Beach®	6-7.5". Salmon-red/cream bicolor	NR	Z6-9		Qt, 1 Gal	Early, Mid, Late	L	128, 72, URC
Crane Beach®	6-7.5". Scarlet red.	NR	Z6-9		Qt, 1 Gal	Early, Mid, Late	L	128, 72, URC
Grace Bay®	6-7.5". Cream/burgundy bicolor.	NR	Z6-9		Qt, 1 Gal	Early, Mid, Late	L	128, 72, URC
Miami Beach®	6-7.5". Bright rose.	NR	Z6-9		Qt, 1 Gal	Early, Mid, Late	L	128, 72, URC
South Beach®	6-7.5". Pale pink.	NR	Z6-9		Qt, 1 Gal	Early, Mid, Late	L	128, 72, URC
White Bay®	6-7.5". White.	NR	Z6-9		Qt, 1 Gal	Early, Mid, Late	L	128, 72, URC

Jolt™ Series



This *barbatus interspecific* series of well-branched plants requires little to no PGRs. Very heat tolerant. An all-America Selections national winner. Can be produced as part of a Fall-blooming program. From PanAmerican Seed. **TENDER.** Seed-produced.

Variety	Description	Vern Code	USDA Hardiness Zone	AHS Heat Zone	Pot Size	Spring Bloom Progression	Growing Schedules	Product Forms
Cherry	TENDER. 16-20". Rose-pink.	NR	Z7a-11		Qt, 1 Gal	Late	A, B, C, D, F, I, K	288, 128, 72
Pink	TENDER. 16-20". Medium-pink.	NR	Z7a-11		Qt, 1 Gal	Late	A, B, C, D, F, I, K	288, 128, 72
Pink Magic	TENDER. 16-20". Rose-pink.	NR	Z7a-11		Qt, 1 Gal	Late	A, B, C, D, F, I, K	288, 128, 72

Kahori® Series



Long-lasting, reblooming varieties in fresh, bright colors. Suitable for pots or garden. From HilverdaKooij and Dummen Orange.

Variety	Description	Vern Code	USDA Hardiness Zone	AHS Heat Zone	Pot Size	Spring Bloom Progression	Growing Schedules	Product Forms
Kahori®	6-8". Bright magenta-pink, single, fragrant blooms. Long-lasting and heat-tolerant with excellent rebloom.	NR	Z3-4	H9-1	Qt, 1 Gal	Early-Mid	A, B, C, D, F, H, I, K	200, 162, 128, 72
Kahori® Pink	6-8". Lilac-pink, single, fragrant flowers with small white eye.	NR	Z3-4	H9-1	Qt, 1 Gal	Early-Mid	A, B, C, D, F, H, I, K	200, 162, 128, 72
Kahori® Scarlet	10-12". Bright scarlet, single, fragrant blooms with small white eye.	NR	Z3-4	H9-1	Qt, 1 Gal	Early-Mid	A, B, C, D, F, H, I, K	200, 162, 128, 72



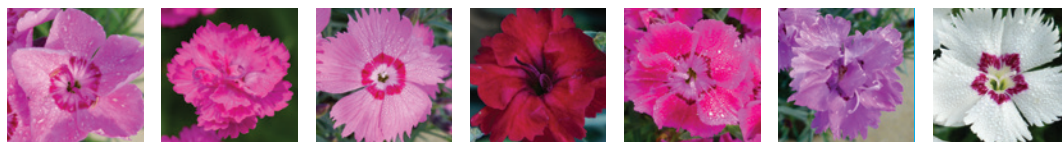
NEW! Mighty Mini™ Miss Rose

A *gratianopolitanus*, groundcover-type, continuous bloomer with small, vibrant rose flowers. Heat and humidity resistant. From Concept Plants.

Variety	Description	Vern Code	USDA Hardiness Zone	AHS Heat Zone	Pot Size	Spring Bloom Progression	Growing Schedules	Product Forms
gratianopolitanus Mighty Mini™ Miss Rose	2"H x 16"W. Vibrant rose.	B-VB	Z5a-10		Qt	Mid	A,B	162, 128, 72, URC

Mountain Frost™ Collection

A collection of interspecific alpine hybrids bred for landscape performance. All are fragrant, have a compact habit and are drought tolerant. Plants do not require vernalization to flower. Ideal for quarts or trade gallons. From Darwin Perennials®



Pink Carpet

Pink PomPom

Pink Twinkle

NEW! Red Garnet

Rose Bouquet

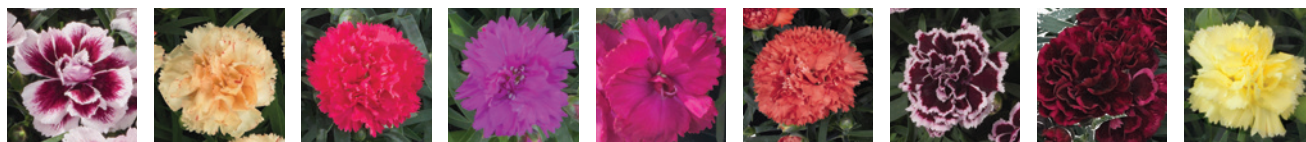
Silver Strike

White Twinkle

Variety	Description	Vern Code	USDA Hardiness Zone	AHS Heat Zone	Pot Size	Spring Bloom Progression	Growing Schedules	Product Forms
Pink Carpet USPPAF	6-8". Bright pink with dark pink eye. Strong, green foliage.	B-VB	Z5-9		Qt, 1 Gal	Mid	A, B, C, D, F, H, I, K	128, 72, URC
Pink PomPom USPPAF	6-8". Double rose-pink flowers. Continual blooming spring through summer. Tidy mounds of green foliage.	B-VB	Z5-9		Qt, 1 Gal	Early-Mid	A, B, C, D, F, H, I, K	128, 72, URC
Pink Twinkle USPPAF	6-8". Bright, bicolor pink flowers. Tidy mounds of silvery-green foliage.	B-VB	Z5-9		Qt, 1 Gal	Mid	A, B, C, D, F, H, I, K	128, 72, URC
NEW! Red Garnet USPPAF	6-8". Deep red flowers on silver-blue foliage.	B-VB	Z5-9		Qt, 1 Gal	Mid	A, B, C, D, F, H, I, K	128, 72, URC
Rose Bouquet USPPAF	10-12". Deep rose flowers. Tidy mounds of deep green foliage.	B-VB	Z5-9		Qt, 1 Gal	Early-Mid	A, B, C, D, F, H, I, K	128, 72, URC
Silver Strike USPPAF	8-10". Bright bicolor pink flowers. Tidy mounds of silver foliage.	B-VB	Z5-9		Qt, 1 Gal	Mid	A, B, C, D, F, H, I, K	128, 72, URC
White Twinkle USPPAF	8-10". Bright, bicolor white and pink flowers. Tidy mounds of silvery-green foliage.	B-VB	Z5-9		Qt, 1 Gal	Mid	A, B, C, D, F, H, I, K	128, 72, URC

Odessa Series

First-year flowering and day length neutral garden carnation series. Masses of large flowers on long stems. Ideal for larger containers. Programmable for all-season production. From HilverdaKooij and Dummen Orange®.



Amy

Bling Bling

Cerise Bling Bling

Joelle

Nicky

Orange Bling Bling

Pierrot

Red

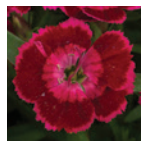
Yellow Bling Bling

Variety	Description	Vern Code	USDA Hardiness Zone	AHS Heat Zone	Pot Size	Spring Bloom Progression	Growing Schedules	Product Forms
Amy	8-12". Double bicolor pink flowers with dark pink centers.	NR	Z5-10		1 Gal	Mid-Late	A, B, C, I, K	128, 72
Bling Bling	8-12". Double pale apricot flowers.	NR	Z5-10		1 Gal	Mid-Late	A, B, C, I, K	128, 72
Cerise Bling Bling	8-12". Double cerise flowers.	NR	Z5-10		1 Gal	Mid-Late	A, B, C, I, K	128, 72
Joelle	8-12". Double purple flowers.	NR	Z5-10		1 Gal	Mid-Late	A, B, C, I, K	128, 72
Nicky	8-12". Cerise flowers.	NR	Z5-10		1 Gal	Mid-Late	A, B, C, I, K	128, 72
Orange Bling Bling	8-12". Double orange flowers.	NR	Z5-10		1 Gal	Mid-Late	A, B, C, I, K	128, 72
Pierrot	8-12". Double rich purple flowers edged in pure white.	NR	Z5-10		1 Gal	Mid-Late	A, B, C, I, K	128, 72
Red	8-10". Dark crimson-red flowers.	NR	Z5-10		1 Gal	Mid-Late	A, B, C, I, K	128, 72
Yellow Bling Bling	8-12". Double yellow flowers.	NR	Z5-10		1 Gal	Mid-Late	A, B, C, I, K	128, 72

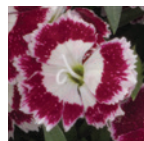
Olivia Series



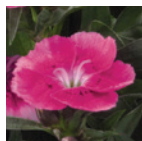
Bella



Cherry



Sweet



Wild

Bicolor series with a compact habit and first year flowering. From HilverdaKooij and Dummen Orange®.

Variety	Description	Vern Code	USDA Hardiness Zone	AHS Heat Zone	Pot Size	Spring Bloom Progression	Growing Schedules	Product Forms
Bella	6-8". White and dark pink flowers.	NR	Z3-9		Qt, 1 Gal	Late	A, B, C, I, K	128, 72
Cherry	6-8". Bicolor dark raspberry flowers with cherry centers and edging.	NR	Z3-10		Qt, 1 Gal	Late	A, B, C, I, K	128, 72
Sweet	6-8". Single white flowers with wide, cherry-red edging.	NR	Z3-10		Qt, 1 Gal	Late	A, B, C, I, K	128, 72
Wild	6-8". Bright pink flowers.	NR	Z3-10		Qt, 1 Gal	Late	A, B, C, I, K	128, 72

Oscar® Series

Extremely uniform habit and flowering response. Double, fragrant flowers in bright colors with excellent branching. More compact than SuperTrouper® series. Suitable for quarts and gallons. From Selecta One.



Cherry + Velvet



Dark Red



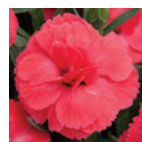
Pink



Pink + Purple



Purple Star



NEW! Salmon



Salmon + White



NEW! Scarlet

Variety	Description	Vern Code	USDA Hardiness Zone	AHS Heat Zone	Pot Size	Spring Bloom Progression	Growing Schedules	Product Forms
Cherry + Velvet	8-10". Double fuchsia with velvet eye.	B-VB	Z6-9		Qt, 1 Gal	Mid	A, B, C, F, H, K	200, 162, 128, 72, URC
Dark Red	8-10". Double dark red.	B-VB	Z6-9		Qt, 1 Gal	Mid	A, B, C, F, H, K	200, 162, 128, 72
Pink USPP# 23133	8-10". Double pink with red eye.	B-VB	Z6-9		Qt, 1 Gal	Mid	A, B, C, F, H, K	200, 162, 128, 72
Pink + Purple	8-10". Double pink with purple eye.	B-VB	Z6-9		Qt, 1 Gal	Mid	A, B, C, F, H, K	200, 162, 128, 72
Purple Star USPP#27794	8-10". Double pink with burgundy eye.	B-VB	Z6-9		Qt, 1 Gal	Mid	A, B, C, F, H, K	200, 162, 128, 72
NEW! Salmon USPP#28604	8-10". Double salmon.	B-VB	Z5-9		Qt, 1 Gal	Mid	A, B, C, F, H, K	200, 162, 128, 72, URC
Salmon + White USPPAF	8-10". Double salmon-pink with white edge.	B-VB	Z6-9		Qt, 1 Gal	Mid	A, B, C, F, H, K	200, 162, 128, 72
NEW! Scarlet	8-10". Double scarlet.	B-VB	Z5-9		Qt, 1 Gal	Mid	A, B, C, F, H, K	200, 162, 128, 72, URC

NEW! 'Pink Fire'



NEW! 'Pink Fire'

Dianthus gratianopolitanus 'Pink Fire', named after a fiery red-headed professional volleyball player from Israel, lives up to its namesake with enormous, fully-double, fiery-pink flowers that emerge from steel-blue foliage. The large flowers are held strong and high by the stems and do not flop. A sport of Firewitch, 'Pink Fire' has many similar, yet improved qualities, including its super-strong clove fragrance. Brought to market by Plants Nouveau.

Variety	Description	Vern Code	USDA Hardiness Zone	AHS Heat Zone	Pot Size	Spring Bloom Progression	Growing Schedules	Product Forms
NEW! 'Pink Fire'	6-8". Double pink flowers.	B-VB	Z3-9		Qt, 1 Gal	Early	A, B	128, 72, URC

Pink Kisses™



Pink Kisses™

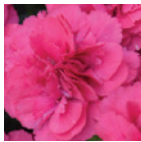
A spectacular stand-alone variety with a striking flower shape and excellent uniformity and blooming power. Easy to grow. No deadheading necessary. Ideal for an early-season pot crop. From Selecta One.

Variety	Description	Vern Code	USDA Hardiness Zone	AHS Heat Zone	Pot Size	Spring Bloom Progression	Growing Schedules	Product Forms
Pink Kisses™ (KLEDG12163) USPP# 24707	12-16". Fragrant, fully double, two tone pink flowers on upright stems. Compact, clump forming habit. Gray-green foliage.	B-VB	Z5-9		Qt, 1 Gal	Early	A, B, C, H, I	128, 72, URC

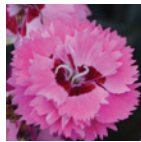
PRETTY POPPERS™ Series



'Appleblossom Burst'



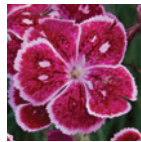
'Double Bubble'



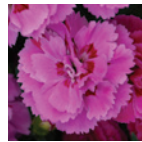
'Cute as a Button'



'Electric Red'



'Fire and Ice'



NEW! 'Goody Gumdrops'



NEW! 'Kiss and Tell'

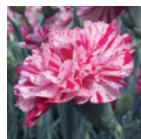
Collection of carnation-like flowers held above blue-green foliage on strong stems. From Walters Gardens, Inc.

Variety	Description	Vern Code	USDA Hardiness Zone	AHS Heat Zone	Pot Size	Spring Bloom Progression	Growing Schedules	Product Forms
'Appleblossom Burst' USPPAF	8-10". Semi-double flowers in a mixture of colors, from white to an intense pink blush.	B-VB	Z4-9		1 Gal	Late	A, B, I	128, 72
'Double Bubble' USPPAF	6-8". Double, medium pink flowers.	B-VB	Z4-9		1 Gal	Late	A, B, I	128, 72
'Cute as a Button' USPPAF	6-8". Semi double, bright pink flowers with a deep red eye and serrated edges.	B-VB	Z4-9		1 Gal	Late	A, B, I	128, 72
'Electric Red' USPPAF	8-10". Rich red flowers.	B-VB	Z4-9		1 Gal	Late	A, B, I	128, 72
'Fire and Ice' USPP# 23483	10". Single, cheerful, raspberry flowers with white picotee edging on each petal.	B-VB	Z4-9		1 Gal	Late	A, B, I	128, 72
NEW! 'Goody Gumdrops' USPPAF	8-10". Semi-double, fuchsia pink with red eye.	B-VB	Z4-9		1 Gal	Late	A, B, I	128, 72
NEW! 'Kiss and Tell' USPPAF	8-10". Semi-double, blush-pink to white with a dark red eye.	B-VB	Z4-9		1 Gal	Late	A, B, I	128, 72

Promotional™ Line



NEW! Hello Yellow



Pinball Wizard



Raspberry Swirl



Rosebud



Silver Star



'Starburst'

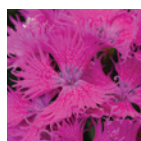
Fragrant, eye-catching varieties. Different from the more traditional Star™ and Scent First™ series. From Pinks by Whetman and PlantHaven.

Variety	Description	Vern Code	USDA Hardiness Zone	AHS Heat Zone	Pot Size	Spring Bloom Progression	Growing Schedules	Product Forms
NEW! Hello Yellow USPPAF	11". Highly scented, soft yellow, double flowers. Repeat flowering.	B-VB	Z5-9	H9-1	1 Gal, 2 Gal	Mid, Late	A, B	200, 162, 128, 72
Pinball Wizard USPPAF	12". Funky pink to white double blooms and hot pink striping. Glaucous foliage.	B-VB	Z5-9	H9-1	1 Gal, 2 Gal	Late	A, B, F, H	200, 162, 128, 72
Raspberry Swirl USPP# 14377	12-14". Single, white eye and petals with maroon border.	B-VB	Z5-9	H9-1	1 Gal	Early	A, B, F, H	200, 162, 128, 72
Rosebud USPP# 21397	8". Double salmon-pink.	B-VB	Z5-9	H9-1	Qt, 1 Gal	Early	A, B, F, H	200, 162, 128, 72
Silver Star USPP# 23729	10". Semi-double white with red eye.	B-VB	Z5-9	H9-1	1 Gal	Early	A, B, F, H	200, 162, 128, 72
'Starburst' USPP# 21162	8". Double cherry-red and pink markings.	B-VB	Z5-9	H9-1	1 Gal	Early	A, B, F, H	200, 162, 128, 72

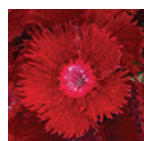
Rockin'™ Series



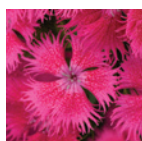
NEW! Pink Magic



NEW! Purple



Red

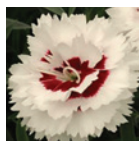


NEW! Rose

An **barbatus* interspecific series with lacy, lightly-scented, vivid flowers on full and long-lasting plants. Durable, multi-year performance. Can be produced as part of a Fall-blooming perennial program. From PanAmerican Seed. Seed-produced.

Variety	Description	Vern Code	USDA Hardiness Zone	AHS Heat Zone	Pot Size	Spring Bloom Progression	Growing Schedules	Product Forms
NEW! Pink Magic	18-24". Red.	NR	Z5a - 8b		Qt, 1 Gal	Early, Mid, Late	A, B, C, D, F	288, 128, 72
NEW! Purple	18-24". Purple.	NR	Z5a - 8b		Qt, 1 Gal	Early, Mid, Late	A, B, C, D, F	288, 128, 72
Red	18-24". Red.	NR	Z5a - 8b		Qt, 1 Gal	Early, Mid, Late	A, B, C, D, F	288, 128, 72
NEW! Rose	18-24". Rose.	NR	Z5a - 8b		Qt, 1 Gal	Early, Mid, Late	A, B, C, D, F	288, 128, 72

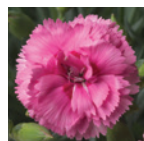
Scent First™ Pot Series



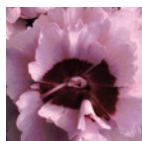
Coconut Surprise



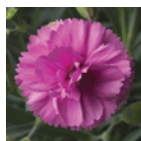
'Coral Reef'



Eternity



Raspberry Surprise



Tickled Pink

Double flowers, fragrant, with a habit ideal for creating compact containers. Suitable for 1 gallon pots. From Pinks by Whetman and PlantHaven.

Variety	Description	Vern Code	USDA Hardiness Zone	AHS Heat Zone	Pot Size	Spring Bloom Progression	Growing Schedules	Product Forms
Coconut Surprise USPP# 18828	8". Double white with crimson center.	B-VB	Z5-9	H9-1	Qt, 1 Gal	Late	A, B, F, H	200, 162, 128, 72, 30
'Coral Reef' USPP# 19660	6-8". Double coral-pink with white picotee.	B-VB	Z5-9	H9-1	1 Gal	Mid	A, B, F, H	200, 162, 128, 72, 30
Eternity USPP# 21395	10". Double hot pink.	B-VB	Z5-9	H9-1	1 Gal	Mid	A, B, F, H	200, 162, 128, 72
Raspberry Surprise USPP# 16029	8". Double pink with dark pink eye.	B-VB	Z5-9	H9-1	Qt, 1 Gal	Late	A, B, F, H	200, 162, 128, 72
Tickled Pink USPP# 14919	10". Double deep pink.	B-VB	Z5-9	H9-1	1 Gal	Mid	A, B, F, H	200, 162, 128, 72

Scent First™ Tall Series



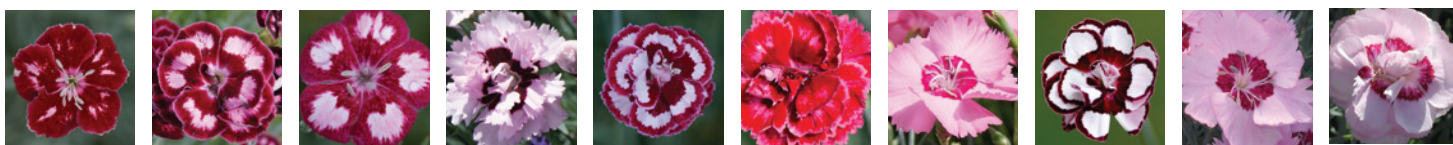
Memories Passion Romance Sugar Plum

Double flowers, fragrant, with longer stems and free flowering habit. Suitable for gallon production. From Pinks by Whetman and PlantHaven.

Variety	Description	Vern Code	USDA Hardiness Zone	AHS Heat Zone	Pot Size	Spring Bloom Progression	Growing Schedules	Product Forms
Memories USPP#25027	11" Double white.	B-VB	Z5-9	H9-1	1 Gal	Mid	A, B, F, H	200, 162, 128, 72
Passion USPP# 20440	9-11". Double red.	B-VB	Z5-9	H9-1	1 Gal	Mid	A, B, F, H	200, 162, 128, 72
Romance USPP# 21843	12". Double salmon-pink.	B-VB	Z5-9	H9-1	1 Gal	Mid	A, B, F, H	200, 162, 128, 72
Sugar Plum USPP# 21398	10". Double maroon and pink with burgundy buds.	B-VB	Z5-9	H9-1	1 Gal	Mid	A, B, F, H	200, 162, 128, 72

Scent from Heaven™ Series

Most fragrant, medium habit. Suitable for quart and 1 gallon production. Bred by Dr Keith Hammett and brought to market by Kiwi Flora and ThinkPlant™.



Angel of Charm Angel of Compassion Angel of Desire Angel of Enlightenment Angel of Forgiveness Angel of Harmony Angel of Hope Angel of Joy Angel of Peace Angel of Virtue

Variety	Description	Vern Code	USDA Hardiness Zone	AHS Heat Zone	Pot Size	Spring Bloom Progression	Growing Schedules	Product Forms
Angel of Charm USPP# 23534	12". Bicolor light pink & crimson red flowers on gray-green foliage.	B-VB	Z5-9		Qt, 1 Gal	Late	A, B, I	128, 72, URC
Angel of Compassion USPPAF	15". Single flowers with burgundy petals with a splash of pale pink.	B-VB	Z5-9		Qt, 1 Gal	Late	A, B, I	128, 72, URC
Angel of Desire USPP# 23533	15". Single flowers with deep rose petals with a splash of pale-pink.	B-VB	Z5-9		Qt, 1 Gal	Late	A, B, I	128, 72, URC
Angel of Enlightenment USPPAF	15". Frilly semi-double pale pink flowers with burgundy eye.	B-VB	Z5-9		Qt, 1 Gal	Late	A, B, I	128, 72, URC
Angel of Forgiveness USPP# 23535	15". Dark pink & light pink patterned flowers on gray-green foliage.	B-VB	Z5-9		Qt, 1 Gal	Late	A, B, I	128, 72, URC
Angel of Harmony USPPAF	15". Double cerise flowers on gray-green foliage.	B-VB	Z5-9		Qt, 1 Gal	Late	A, B, I	128, 72, URC
Angel of Hope USPPAF	15". Medium pink flowers with burgundy eye.	B-VB	Z5-9		Qt, 1 Gal	Late	A, B, I	128, 72, URC
Angel of Joy USPPAF	15". Double pink & burgundy picotee flowers on gray-green foliage.	B-VB	Z5-9		Qt, 1 Gal	Late	A, B, I	128, 72, URC
Angel of Peace USPP# 23536	15". Clear pink single blooms with a red eye.	B-VB	Z5-9		Qt, 1 Gal	Late	A, B, I	128, 72, URC
Angel of Virtue USPPAF	15". Semi-double pink flowers with burgundy eye.	B-VB	Z5-9		Qt, 1 Gal	Late	A, B, I	128, 72, URC

Star™ Double Series



Pop Star

Starlette

Dwarf habit, double flowers with spicy fragrance. Flexible quart or gallon production. From Pinks by Whetman and PlantHaven.

Variety	Description	Vern Code	USDA Hardiness Zone	AHS Heat Zone	Pot Size	Spring Bloom Progression	Growing Schedules	Product Forms
Pop Star USPP# 18222	4". Double soft magenta with dark center.	B-VB	Z5-9	H9-1	Qt, 1 Gal	Early-Mid	A, B, F, H	200, 162, 128, 72
Starlette USPP# 21438	8". Double bright pink with red eye.	B-VB	Z5-9	H9-1	Qt, 1 Gal	Early-Mid	A, B, F, H	200, 162, 128, 72

Star™ Single Series



Eastern Star

Fire Star

'Neon Star'

Peppermint Star

Stargazer

Superstar

Dwarf habit, single flowers with spicy fragrance. Flexible quart or gallon production. From Pinks by Whetman and PlantHaven.

Variety	Description	Vern Code	USDA Hardiness Zone	AHS Heat Zone	Pot Size	Spring Bloom Progression	Growing Schedules	Product Forms
Eastern Star USPP# 14437	6". Single deep pink with maroon center.	B-VB	Z5-9	H9-1	Qt, 1 Gal	Early-Mid	A, B, F, H	200, 162, 128, 72, 30
Fire Star USPP# 14895	9". Single dark red.	B-VB	Z5-9	H9-1	Qt, 1 Gal	Early-Mid	A, B, F, H	200, 162, 128, 72, 50, 30
'Neon Star' USPP# 14549	5". Single neon pink.	B-VB	Z5-9	H9-1	Qt, 1 Gal	Early-Mid	A, B, F, H	200, 162, 128, 72, 50, 30
Peppermint Star USPP# 20369	8". Single deep pink with red center.	B-VB	Z5-9	H9-1	Qt, 1 Gal	Early-Mid	A, B, F, H	200, 162, 128, 72, 30
Stargazer USPP# 26776	8-10". Crisp white flowers with a dark burgundy eye. Eye-catching, frilled petals.	B-VB	Z5-9	H9-1	Qt, 1 Gal	Early-Mid	A, B, F, H	200, 162, 128, 72
Superstar USPP# 25077	9-10". Bright patterns of maroon and deep pink.	B-VB	Z5-9	H9-1	Qt, 1 Gal	Early-Mid	A, B, F, H	200, 162, 128, 72, 30

Sunflor® Series

Extensive, colorful assortment. Can be programmed for all season flowering. Suitable for garden or containers. From HilverdaKooij and Dummen Orange®.



Abby*

Allura

Allura Red

Amber

Beetle*

Charmy

Cosmos

Dynamite

Esmay*

Esta



Faganza

Finesse

Jaguar*

Kaylee

Lilac Charmy

Luigi

Margarita*

Megan*

Mimi

Norah*

Sunflor® Series (continued)



Pink Faganza



Red Bull*



Red Esta



Sofia



Vivre



Vulcano

Variety	Description	Vern Code	USDA Hardiness Zone	AHS Heat Zone	Pot Size	Spring Bloom Progression	Growing Schedules	Product Forms
Abby*	6-8". Double pink flowers.	NR	Z5-10		Qt, 1 Gal	Early-Mid-Late	A, B, C, I, K	200, 128, 72
Allura	6-8". Deep coral pink double flowers.	NR	Z5-10		Qt, 1 Gal	Early-Mid-Late	A, B, C, I, K	200, 128, 72
Allura Red	6-8". Bright red double flowers.	NR	Z5-10		Qt, 1 Gal	Early-Mid-Late	A, B, C, I, K	200, 128, 72
Amber	6-8". Soft yellow double flowers.	NR	Z5-10		Qt, 1 Gal	Early-Mid-Late	A, B, C, I, K	200, 128, 72
Beetle*	6-8". Deep rich purple flowers.	NR	Z5-10		Qt, 1 Gal	Early-Mid-Late	A, B, C, I, K	200, 128, 72
Charmy	6-8". Semi-double, pale pink flowers with purple centers.	NR	Z5-10		Qt, 1 Gal	Early-Mid-Late	A, B, C, I, K	200, 128, 72
Cosmos	6-8". Pure white double flowers.	NR	Z5-10		Qt, 1 Gal	Early-Mid-Late	A, B, C, I, K	200, 128, 72
Dynamite	6-8". Double red flowers.	NR	Z5-10		Qt, 1 Gal	Early-Mid-Late	A, B, C, I, K	200, 128, 72
Esmay*	6-8". Single purple flowers with dark purple centers.	NR	Z5-10		Qt, 1 Gal	Mid-Late	A, B, C, I, K	200, 128, 72
Esta	6-8". Double dark pink flowers with white edges.	NR	Z5-10		Qt, 1 Gal	Early-Mid-Late	A, B, C, I, K	200, 128, 72
Faganza	6-8". Double light purple flowers.	NR	Z5-10		Qt, 1 Gal	Early-Mid-Late	A, B, C, I, K	200, 128, 72
Finesse	6-8". Double purple flowers with frilly lilac edges.	NR	Z5-10		Qt, 1 Gal	Early-Mid-Late	A, B, C, I, K	200, 128, 72
Jaguar*	6-8". Dark red flowers with darker red centers.	NR	Z5-10		Qt, 1 Gal	Early-Mid-Late	A, B, C, I, K	200, 128, 72
Kaylee	6-8". Patterned flowers in white, pinkish red & fuchsia.	NR	Z5-10		Qt, 1 Gal	Early-Mid-Late	A, B, C, I, K	200, 128, 72
Lilac Charmy	6-8". Single two tone lilac flowers.	NR	Z5-10		Qt, 1 Gal	Early-Mid-Late	A, B, C, I, K	200, 128, 72
Luigi	4-6". Double salmon flowers.	NR	Z5-10		Qt, 1 Gal	Early-Mid-Late	A, B, C, I, K	200, 128, 72
Margarita*	6-8". Double deep red flowers with white edges.	NR	Z5-10		Qt, 1 Gal	Early-Mid-Late	A, B, C, I, K	200, 128, 72
Megan*	6-8". Double multi-colored pink & white flowers.	NR	Z5-10		Qt, 1 Gal	Early-Mid-Late	A, B, C, I, K	200, 128, 72
Mimi	6-8". Double salmon orange flowers.	NR	Z5-10		Qt, 1 Gal	Early-Mid-Late	A, B, C, I, K	200, 128, 72
Norah*	6-8". Double coral pink flowers.	NR	Z5-10		Qt, 1 Gal	Early-Mid-Late	A, B, C, I, K	200, 128, 72
Pink Faganza	4-6". Double pink flowers.	NR	Z5-10		Qt, 1 Gal	Early-Mid-Late	A, B, C, I, K	200, 128, 72
Red Bull*	6-8". Double bright red flowers.	NR	Z5-10		Qt, 1 Gal	Mid-Late	A, B, C, I, K	200, 128, 72
Red Esta	6-8". Bicolored, raspberry-red and white double flowers.	NR	Z5-10		Qt, 1 Gal	Early-Mid-Late	A, B, C, I, K	200, 128, 72
Sofia	6-8". Double maroon flowers with white edges.	NR	Z5-10		Qt, 1 Gal	Early-Mid-Late	A, B, C, I, K	200, 128, 72
Vivre	6-8". Double hot pink flowers.	NR	Z5-10		Qt, 1 Gal	Early-Mid-Late	A, B, C, I, K	200, 128, 72
Vulcano	6-8". Double bright red flowers.	NR	Z5-10		Qt, 1 Gal	Early-Mid-Late	A, B, C, I, K	200, 128, 72

*These varieties will not be available after January 1, 2020.

SuperTrouper™ Series

Fragrant blooms, upright habit, large color range. Excellent for pots or garden. Suitable for quarts and gallons. From Selecta One.



Butterfly Dark Red



Lavender + White



Lilac On Purple



Magenta + White



Orange



Pink + White



Purple



Red + White



Scarlet



Silver Pink



Velvet Red



Velvet + White



White

Variety	Description	Vern Code	USDA Hardiness Zone	AHS Heat Zone	Pot Size	Spring Bloom Progression	Growing Schedules	Product Forms
Butterfly Dark Red USPP# 22860	8-10". Double dark red.	NR	Z6-9	H9-6	Qt, 1 Gal	Late	B, F, H, K	162, 128, 72, URC
Lavender + White USPP#26738	8-10". Double lavender with white edges	NR	Z6-9	H9-6	Qt, 1 Gal	Late	B, F, H, K	162, 128, 72, URC
Lilac On Purple	8-10". Double red-purple with lilac edge.	NR	Z6-9	H9-6	Qt, 1 Gal	Late	B, F, H, K	162, 128, 72, URC
Magenta + White	8-10". Double pink with magenta eye and thin white edge.	NR	Z6-9	H9-6	Qt, 1 Gal	Late	B, F, H, K	162, 128, 72, URC
Orange	8-10". Double bright orange.	NR	Z6-9	H9-6	Qt, 1 Gal	Late	B, F, H, K	162, 128, 72, URC
Pink + White USPP#22281	8-10". Fully double pink with white edges and red centers	NR	Z6-9	H9-6	Qt, 1 Gal	Late	B, F, H, K	162, 128, 72, URC
Purple	8-10". Double, dark burgundy.	NR	Z6-9	H9-6	Qt, 1 Gal	Late	B, F, H, K	162, 128, 72, URC
Red + White	8-10". Double red with wide, white edging.	NR	Z6-9	H9-6	Qt, 1 Gal	Late	B, F, H, K	162, 128, 72, URC
Scarlet USPP#26721	8-10". Double red.	NR	Z6-9	H9-6	Qt, 1 Gal	Late	B, F, H, K	162, 128, 72, URC
Silver Pink	8-10". Double pink with darker eye.	NR	Z6-9	H9-6	Qt, 1 Gal	Late	B, F, H, K	162, 128, 72, URC
Velvet Red	8-10". Double deep red.	NR	Z6-9	H9-6	Qt, 1 Gal	Late	B, F, H, K	162, 128, 72, URC
Velvet + White	8-10". Double velvet with pinkish-white edging.	NR	Z6-9	H9-6	Qt, 1 Gal	Late	B, F, H, K	162, 128, 72, URC
White	8-10". Double, pure white.	NR	Z6-9	H9-6	Qt, 1 Gal	Late	B, F, H, K	162, 128, 72, URC

Vivid™ Series



Vivid™ Bright Light



NEW! Vivid™ Cherry Charm

Reblooming *gratianopolitanus* varieties suitable as specimen plants, in mass planting, in mixed containers, or in the perennial border. Uniform, compact habit. Heat and humidity resistant. From Concept Plants.

Variety	Description	Vern Code	USDA Hardiness Zone	AHS Heat Zone	Pot Size	Spring Bloom Progression	Growing Schedules	Product Forms
Vivid™ Bright Light USPP#28239	8". Vivid, bright, pink fragrant flowers from spring to fall. Good rebloomer. Long-lasting performance.	B-VB	Z5-9		Qt, 1 Gal	Mid	A, B, D, F, H, I, K	162, 128, 72, URC
NEW! Vivid™ Cherry Charm USPPAF	4-6". Small, vivid, bright-pink flowers.	B-VB	Z5-9		Qt, 1 Gallon	Mid	A, B, D, F, H, I, K	162, 128, 72, URC

Stand-alone Varieties



'Bath's Pink'



Firewitch



'Frosty Fire'



'Tiny Rubies'



deltooides Vampire

Variety	Description	Vern Code	USDA Hardiness Zone	AHS Heat Zone	Pot Size	Spring Bloom Progression	Growing Schedules	Product Forms
'Bath's Pink'	6-8". Single soft pink.	B-VR	Z3		Qt, 1 Gal	Mid	A, B, F, H	128, 72, 30
Firewitch	6". Single magenta.	B-VB	Z3		Qt, 1 Gal	Early	A, B, F, H, I	200, 162, 128, 72, 50, 30
'Frosty Fire'	6". Single red.	B-VB	Z4		Qt, 1 Gal	Mid	A, B, F, H, I	200, 128, 72, 30
'Tiny Rubies'	3". Small, double rose-red.	B-VB	Z3		Qt, 1 Gal	Late	A, B, F, H, I	200, 128, 72
deltooides Vampire	6-8". Vibrant, deep crimson flowers on deep green foliage. Dwarf, compact habit. Suitable for the garden or patio pots, or as a ground cover. Seed-produced.	NR	Z2-9		Qt, 1 Gal	Late	A, B, F, H	128, 72



Vernalization Codes

VR: Vernalization Required. Plant requires cold treatment for best performance and/or first-year flowering.

B-VR: Vernalization Required. Bulking in final sales container highly recommended prior to vernalization for best performance and first-year flowering.

VB: Vernalization Beneficial. Plant benefits from cooling.

B-VB: Vernalization Beneficial. Bulking in final sales container highly recommended prior to vernalization for best performance and first-year flowering.

NR: Vernalization not required. However, plant quality and flower power are improved with 4 – 6 weeks of cooling.

Growing Schedules

Schedule A: Transplant in summer through early fall in poly hoops or outdoors for spring sales. Typically planting occurs August-September. Plant earlier for larger pot sizes like 2-gallon. You may need to cover with a frost blanket for added protection in colder zones. Cover prior to severe cold or before temperatures are consistently below 32°F (0°C) at night. Uncover approximately March 1st-15th to sell in spring. Fall pinching/shearing and spring cleanup is variety dependent.

Schedule B: Transplant in fall through mid-winter inside minimally heated structures for spring sales. This typically occurs October-December. Overwinter by maintaining temperature above 32°F (0°C) and below 45°F (7°C) for vernalization to occur. Can move outdoors or remove protective cover approximately March 1st-15th to sell in spring. In warmer zones, where temperatures remain above freezing for most of the winter, growing inside a heated structure may not be necessary.

Schedule C: Transplant outdoors for early summer sales. Planting typically occurs in March and April.

Schedule D: Transplant outdoors in late spring or early summer for late summer or fall sales. Planting typically occurs in late May-June.

Schedule E: Transplant in January-March inside a heated greenhouse. Grow at approximately 55°F (13°C) night and 65°F (18°C) day temperatures for spring sales. Force under short day conditions.

Schedule F: Transplant in January-March inside heated greenhouse. Grow at approximately 55°F (13°C) night and 65°F (18°C) day temperatures for spring sales. Force under long day conditions.

Schedule G: Transplant in late winter in a low heat greenhouse using vernalized 72-cell or 30-cell liners. Protect from hard freezing but allow to develop naturally as day length and temperatures increase. Sell in spring or early summer as plants develop. Use multiple vernalized 72-cell liners per pot for containers larger than one gallon.

Schedule H: Transplant in November to early January outside or under saran. Protect from hard freezing with either minimal heat, covers, or icing. Once plants are rooted down, provide long days to initiate flowering for spring sales.

Schedule I: Transplant in November to early January outside or under saran. Protect from hard freezing with either minimal heat, covers, or icing. Grow and finish under natural day length for spring sales.

Schedule J: Transplant liners in May-June for sales the following spring-early summer. This is to allow sufficient time to bulk the plants before the shorter day lengths and lower temperatures of fall arrive. A fall planting is not advised.

Schedule K: Transplant in January-March inside a heated greenhouse. Grow at approximately 65-75°F (18-24°C) for late spring-early summer sales.

Schedule L: Transplant year round inside a heated greenhouse or outside if night temperatures are above 50° F. Minimum night temperatures should be 46° - 50° F and day temperatures 55° - 60° F. Soft pinch 10-14 days after transplant for a scheduled finish.

Dianthus Flow® finishing times if transplanting a 128-cell (subtract 1-2 weeks if transplanting a 72-cell):

- **Winter Planting:** 4" or quart, 14-16 weeks; 6" pot, 16-20 weeks
- **Spring Planting:** 4" or quart, 8-10 weeks; 6" pot, 12-14 weeks

Access our Dianthus technical guides on our website at GLplants.com.



2369 Old Philadelphia Pike
Lancaster, PA 17602

p: 717.299.0300
f: 717.299.7162

e: GreenLeaf@GLplants.com
w: GLplants.com

LIMITATION OF WARRANTY. Aris Horticulture, Inc. warrants to the purchaser that Aris Products and non-Aris Products shall conform to the description on these pages, and with respect to plants, Aris warrants that such plants will be viable when received. ALL OTHER WARRANTIES, WHETHER EXPRESSED OR IMPLIED AND INCLUDING BUT NOT LIMITED TO THE WARRANTY OF MERCHANTABILITY OF FITNESS FOR A PARTICULAR PURPOSE ARE EXCLUDED FROM THIS CONTRACT OF SALE. PURCHASER SHALL BE LIMITED TO THE AMOUNT OF THE PURCHASE PRICE OF ANY ARIS PRODUCT OR NON-ARIS PRODUCT ON WHICH CLAIM IS MADE AS THEIR EXCLUSIVE REMEDY FOR BREACH OF THE WARRANTY EXPRESSED HEREIN AND FOR NEGLIGENCE AND OTHERWISE. UNDER NO CIRCUMSTANCES SHALL ARIS BE LIABLE TO PURCHASER OR ANY OTHER PERSON FOR CONSEQUENTIAL OR INCIDENTAL DAMAGE. © Green Leaf Plants®, A Division of Aris Horticulture, Inc. SS-19024-GLP (07/01/19)