

FLORA JAPONICA

Japanese Botanical Artists

17 September 2016 – 5 March 2017

This exhibition celebrates the unique richness of Japanese native flora and the huge influence of Japanese plants on horticulture in the west. About 80 Japanese wild plants are portrayed here by 34 of the most eminent contemporary Japanese botanical artists. The flora of Japan is very rich and ancient. It includes many unique endemic species not found on the Asiatic mainland. The mountainous nature of much of the country has enabled most of these species to survive population growth and expanding cultivation. The Japanese also have a long history of plant appreciation, often collecting numerous variations of one species and preserving them for generations. From the time that Europeans reached Japan, the country was almost entirely closed to foreigners, so anything coming out of Japan to the west was considered highly valuable and exotic. Japanese wild and garden plants only reached Europe in the 19th century, later than many plants from the eastern seaboard of China. They formed part of a great vogue for all things Japanese in 19th century Europe.

Gallery 1 & 5 – Japanese contemporary artists

The botanical paintings on display show wild Japanese plants in perfect detail. Most of the models have been collected from wild sources and have been carefully recorded. They have been painted by the most accomplished botanical artists working in Japan today. The elegance and sense of design combined with scientific rigour is typical of Japanese botanical art. Many of the artists were trained in design, before joining groups of botanical artists or working with teachers who specialise in botanical illustration. Botanical art is expanding in 21st century Japan, with both professional artists and also a large number of amateurs producing excellent botanical illustrations. They have organized themselves into regional circles and established a nationwide association. In recent years Japanese botanical artists have been regular exhibitors at International shows, such as the Hunt Institute in Pittsburgh, and the Royal Horticultural Society's shows in London. The high quality of the paintings submitted continues to be acknowledged and they have received the highest accolades for their work.



Mieko Ishikawa
 Born Tokyo, Japan 1950
***Cerasus sargentii* (Rehder) H. Ohba, var. sargentii (Rosaceae)**

O-yamazakura
 Painted from flowers collected on 16th April 2013 in the Nikko Botanical Garden and from fruit collected near Lake Chuzenji at 1269 m on 5th October 2013.

Watercolour on paper
 Artist's Collection



Mieko Ishikawa
 Born Tokyo, Japan 1950
***Cercidiphyllum magnificum* (Nakai) Nakai. (Cercidiphyllaceae)**

Hiroha-katsura
 Painted from specimens collected in the wild. The male flowers were collected on 6th June 2013 by Dr Hirosuke Ohba in the Konsei pass, Yumoto, Nikko City at 1850 m. The female flowers were collected by Professor Jin Maurata on 26th April 2013 on Mt Shirane, Numata-City. The leaves and flowers were collected by the artist on 2nd September 2014.

Watercolour on paper
 Artist's Collection



Mieko Ishikawa
 Born Tokyo, Japan 1950
***Paulownia tomentosa* (Thunb.) Sieb. & Zucc. Ex Steud. (Paulowniaceae).**

Kiri
 Painted from a specimen collected at Fuchumachi, Toyama city, by the dry river bed of the Jintsu river on 13th May 2013.

Watercolour on paper
 Artist's Collection



Junko Iwata
 Born Nagoya, Japan 1964
***Sorbus commixta* Hedlund (Rosaceae)**

Nana-kamado
 Painted from a specimen collected in the Royal Botanic Gardens, Kew in August 2013.

Watercolour on paper
 Artist's Collection



Junko Iwata
 Born Nagoya, Japan 1964
***Styrox japonicas* Sieb. & Zucc. (Styraceae)**
 Ego-no-ki
 Painted from a specimen collected in the Royal
 Botanic Gardens, Kew in August 2013.
 Watercolour on paper
 Artist's Collection



Yoko Uchijo
 Born Tokyo, Japan 1949
***Euonymus oxyphyllus* Miq. (Celastraceae)**
 Tsuribana
 Painted from a specimen collected at
 Sawauchimura, Iwate province, at 380 m on
 15 April 2014.
 Watercolour on paper
 Artist's Collection



Yoko Uchijo
 Born Tokyo, Japan 1949
***Trichosanthes kirilowii* Maxim. var. *japonica*
 (Miq.) Kitamura (Cucurbitaceae)**
 Ki-karasu-uri
 Painted from a flowering specimen collected in
 Tama city, near Tokyo, on 19th July 2014.
 Watercolour on paper
 Artist's Collection



Kyoko Ohara
 Born Ishikawa, Japan 1972
***Acer palmatum* Thunberg, (Sapindaceae,
 formerly Aceraceae)**
 Iroha momiji
 Painted from a specimen collected at Ibaraki
 Nature Museum, on 8th November 2014.
 Watercolour on paper
 Artist's Collection



Tomoko Ogawa
Born Kyoto, Japan 1969
***Clematis japonica* Thunberg, (Ranunculaceae)**
Hansho-zuru
Painted from a flowering specimen collected in
Kamiyamaguchi, Hayama-cho, Miura-gun,
Kanagawa-ken, south of Yokohama on
7th May 2013.
Watercolour on paper
Artist's Collection



Tomoko Ogawa
Born Kyoto, Japan 1969
***Primula japonica* A. Gray, (Primulaceae)**
Kurin-so
Painted from a flowering specimen collected in
Kobyaku, Nikkou-shi, Tochigi-ken, at 390 m on
10th May 2014.
Watercolour on paper
Artist's Collection



Yoko Kakuta
Born Tailien, Manchuria 1939
***Camellia japonica* L. (Theaceae)**
Yabu-tsubaki
Painted from specimens collected near Aomori
city, the most northerly locality for the species
in Japan, in flower on 7th May 2013 and in fruit
on 15th October 2012.
Watercolour on paper
Artist's Collection



Yoko Kakuta
Born Tailien, Manchuria 1939
***Rhododendron molle* subsp. *japonicum* (A. Gray) Kron, (Ericaceae)**
Renge-tsutsuji
Painted from a flowering specimen collected in
Katashina-mura, Gunma-ken at 900 m on 2nd
June 2013; in fruit 11th August 2013
Watercolour on paper
Artist's Collection



Seiko Kijima
 Born Kobe, Japan 1948
***Epimedium sempervirens* Nakai ex F. Maek.**
(Berberidaceae)
 Tokiwa-ikari-so
 Painted from a flowering specimen collected in
 the Ojiro valley, Hyogo at 450 m in September
 2012 and April 2013
 Watercolour on paper
 Artist's Collection



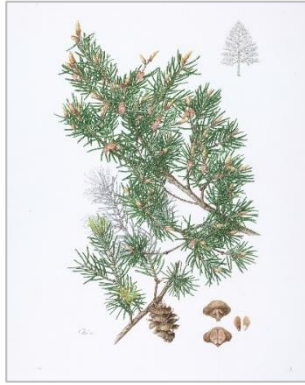
Kumiko Kosuda
 Born Kanagawa, Japan 1943
***Rhododendron makinoi* Tagg (Ericaceae)**
 Hosoba-shakunage
 Painted from specimens cultivated by the
 Sakata Seed Corporation, flowering on
 13th May 2013
 Watercolour on paper
 Artist's Collection



Kumiko Kosuda
 Born Kanagawa, Japan 1943
***Peonia japonica* (Makino) Miyabe & Takeda**
(Paeoniaceae)
 Yama-shakuyaku
 Painted from specimens collected on the
 northern side of Mount Fuji at 1380 m,
 flowering 8th June 2013, in fruit 24th September
 2014. Rootstock from cultivated
 plants in Kanagawa.
 Watercolour on paper
 Artist's Collection



Mieko Konishi
 Born Hyogo, Japan 1945
***Magnolia obovata* Thunberg (Magnoliaceae)**
 Hoo-no-ki
 Painted from a flowering specimen collected on
 Mount Iwane, Kawanishi city, Hyogo pref. at
 150 m in May and September 2013 and May
 2014. Showing flowers at three different stages.
 Watercolour on paper
 Artist's Collection



Mieko Konishi
Born Hyogo, Japan 1945
***Pseudotsuga japonica* (Shiras) Beissn.
(Pinaceae)**
Toga-sawara
Painted from a specimen collected at Tonomine
in Nara, at 450 m.
Watercolour on paper
Artist's Collection



Mieko Konishi
Born Hyogo, Japan 1945
***Acer japonicum* Thunberg (Sapindaceae
formerly Aceraceae)**
Hauchiwa-kaede
Painted from a flowering specimen collected on
the mountainside of Roko in the Kobe
municipal arboretum at 500 m on 17th April, 2nd
May, 8th October 2013 and 30th October 2014.
Watercolour on paper
Artist's Collection



Hidenari Kobayashi
Born Hokkaido, Japan 1956
***Hydrangea macrophylla* Thunberg var.
normalis E.H. Wilson (Hydrangeaceae)**
Gaku-Ajisai
Painted from flowering specimens collected in
the Kanagawa Prefectural Kannonzaki-Koen
park on 7th July 2013, 20th January 2014 and
26th May 2015.
Watercolour on paper
Artist's Collection



Koichi Saito
Born Saitama-shi, Japan 1950
***Lycoris sanguinea* Maxim. var. *sanguinea*
(Amaryllidaceae)**
Kitsune-no-kamisori
Painted from flowering specimens collected in
Gyoda-shi at 17 m and in Ogawa-Machi at 100
m, both in Saitama-ken in August 2012.
Watercolour on paper
Artist's Collection



Koichi Saito
Born Saitama-shi, Japan 1950
***Deinanthe bifida* Maxim. (Hydrangeaceae)**
Ginbai-so
Painted from flowering specimens collected at
60 m at Higasimatsuyama-shi in Saitama-ken,
in May 2012.
Watercolour on paper
Artist's Collection



Koichi Saito
Born Saitama-shi, Japan 1950
***Aconitum japonicum* Thunberg var. *montanum*
Nakai (Ranunculaceae)**
Yama-tori-Kabuto
Painted from flowering specimens collected at
50 m at Higasimatsuyama-shi in Saitama-ken, in
September 2014.
Watercolour on paper
Artist's Collection



Keiko Sasaki
Born Chiba, Japan 1960
***Geranium thunbergii* Sieb. & Zucc.
(Geraniaceae)**
Gen-no-shoko
Painted from flowering specimens collected in
Azusagawa, Kamikochi, Nagano at 1800 m on
31st August 2013.
Watercolour on paper
Artist's Collection



Keiko Sasaki
Born Chiba, Japan 1960
***Gaultheria adenostrix* (Miq.) Maxim.
(Ericaceae)**
Akamono
Painted from specimens collected in Yakedake,
Nagano at about 1800 m in June 2013 in flower
and on Higashiazumayama, Fukushima at about
1975 m in August 2014 in fruit.
Watercolour on paper
Artist's Collection



Masako Sasaki
 Born Hyogo, Japan 1939
***Viola shikokiana* Makino**
 Shikoku-sumire
 Painted from flowering specimens collected on the Donbeitoge Pass in Hakone at 1400 m on 2nd May 2013 and at Nishiusuzuka at the foot of Mt Fuji at 1200 m on 17th May 2015.
 Watercolour on paper
 Artist's Collection



Michiko Shibata
 Born Tokyo, Japan 1966
***Arisaema serratum* (Thunberg) Schott**
(Araceae)
 Kanto-mamushi-gusa
 Painted from a flowering specimen collected at 1000 m near Lake Yamanaka on 11th May 2013.
 Watercolour on paper
 Artist's Collection



Michiko Shibata
 Born Tokyo, Japan 1966
***Cirsium purpuratum* (Maxim.) Matsum.**
(Compositae)
 Fuji-azami
 Painted from a flowering specimen collected at 1000 m near Lake Yamanaka on 8th September 2013. This species is almost confined to the environs on Mt Fuji.
 Watercolour on paper
 Artist's Collection



Michiko Shibata
 Born Tokyo, Japan 1966
***Rosa hirtula* (Regel) Nakai (Rosaceae)**
 Sansho-bara
 Painted from flowering specimens collected at 1000 m near Lake Yamanaka on 8th June 2014.
 Watercolour on paper
 Artist's Collection



Kazuko Tajikawa
Born Oaska, Japan 1947
***Hibiscus hamabo* Sieb. & Zucc. (Malvaceae)**
Hama-bo
Painted from flowering specimens collected on the coast of Awaji Island, Naruga-shima, Hyogo, on 29th July 2013 and 10th May 2014 and in fruit on 1st December 2013.
Watercolour on paper
Artist's Collection



Kazuko Tajikawa
Born Osaka, Japan 1947
***Vitex rotundifolia* L. f. (Lamiaceae)**
Hama-go
Painted from flowering specimens collected on the coast of Awaji Island, Naruga-shima, Hyogo on 21st July 2013.
The plants creep across the sand.
Watercolour on paper
Artist's Collection



Noriko Tobita
Born Kanagawa, Japan 1940
***Kerria japonica* (Thunberg) DC. (Rosaceae)**
Yama-buki
Painted from specimens collected in the Saitama city riverside park, in flower in March 2013 and in fruit August and October 2013.
Watercolour on paper
Artist's Collection



Noriko Tobita
Born Kanagawa, Japan 1940
***Akebia trifoliata* (Thunberg) Koidz. (Lardizabalaceae)**
Mitsuba-akebi
Painted from specimens collected in Katasina village at 900 m flowering in May 2007 and fruiting in September 2008.
Watercolour on paper
Artist's Collection



Maki Nishimura
Born Yamaguchi, Japan 1967
***Lespedeza thunbergii* (DC) Nakai**
(Leguminosae)

Miyagi-no-hagi
Painted from flowering specimens grown at Otsu, Shiga in 2013. This is one of 'the seven wildflowers of autumn', named in a verse from the Man'yōshū, the oldest surviving collection of Japanese poetry.

Watercolour on paper
Artist's Collection



Mayumi Hashi
Born Nara, Japan 1954
***Magnolia sieboldii* C. Koch (Magnoliaceae)**
Ooyama-renge

Painted from flowering specimens grown in the Valley Gardens, Windsor on 8th and 22nd June 2014 and in fruit on 7th September 2014.

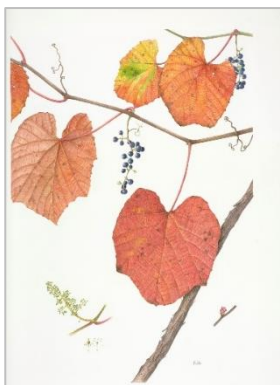
Watercolour on paper
Artist's Collection



Mayumi Hashi
Born Nara, Japan 1954
***Clerodendron trichotomum* Thunberg**
(Lamiaceae)

Kusagi
Painted from flowering specimens grown in the R.H.S. Garden, Wisley on 28th August 2013 and from fruit in the Chelsea Physic Garden on 15th September 2014.

Watercolour on paper
Artist's Collection



Eiko Hamada
Born Tokyo, Japan 1944
***Vitis coignetiae* Pulliat. (Vitaceae)**
Yama-budo

Painted from specimens collected at 1200 m at Tateshina, Nagano in October 2014.

Watercolour on paper
Artist's Collection



Eiko Hamada
Born Tokyo, Japan 1944
***Cornus kousa* Buerg. ex Hance (Cornaceae)**
Yama-boushi
Painted from flowering specimens collected in
Izu, Shizuoka on 27th May 2013.
Watercolour on paper
Artist's Collection



Asuka Hishiki
Born Kyoto, Japan 1972
***Dryopteris erythrosora* (Eaton) O. Kuntze**
(Dryopteridaceae)
Beni-shida
Painted from specimens collected in Otoyama,
Yosano-cho, Yosano-gun, Kyoto.
Watercolour on paper
Artist's Collection



Asuka Hishiki
Born Kyoto, Japan 1972
***Miscanthus sinensis* Anders. (Poaceae), with**
the Japanese grasshopper *Patanga japonica*
Susuki to Tsuchi-inago
Painted from flowering specimens collected in
Shimoyamaguchi, Yamaguchi-cho, Nishinomiya
city, Hyogo, in October and November 2013.
Watercolour on paper
Artist's Collection



Noriko Fujita
Born Hyogo, Japan 1955
***Wisteria floribunda* (Willd.) DC. (Luguminosae)**
Noda-fuji
Painted from flowering specimens collected in
Yokohamashi-Kanagawa on 3rd, 10th and 20th
April; the leaves on 29th April and fruits and
seeds on 10th December 2013.
Watercolour on paper
Artist's Collection



Noriko Fujita
 Born Hyogo, Japan 1955
***Stewartia pseudocamellia* Maxim. (Theaceae)**
 Natsu-tsubaki
 Painted from specimens collected in Sayamashi-Saitama: flowering branches on 12th June 2013; fruiting branches in August and October and dehiscent capsule in November 2013.
 Watercolour on paper
 Artist's Collection



Kimiyo Maruyama
 Born Hyogo, Japan 1936
***Sciadopitys verticillata* (Thunberg) Sieb. & Zucc. (Sciadopityaceae)**
 Koya-maki
 Painted from specimens collected in the Kobe Municipal arboretum in September 2013.
 Watercolour on paper
 Artist's Collection



Kimiyo Maruyama
 Born Hyogo, Japan 1936
***Tsuga diversifolia* (Maxim.) Mast.**
 Kome-tsuga
 Painted from specimens collected in the Kobe Municipal arboretum in 2012.
 Watercolour on paper
 Artist's Collection



Kayoko Miyazawa
 Born Tokyo, Japan
***Iris japonica* Thunberg (Iridaceae)**
 Shaga
 Painted from flowering specimens collected in Itukaichi-shi, Tokyo at 195 m in April 2013.
 Watercolour on paper
 Artist's Collection



Kayoko Miyazawa
 Born Tokyo, Japan
***Iris laevigata* Fischer (Iridaceae)**
 Kakitsubata
 Painted from flowering specimens collected in
 Ukima Iris park, Tokyo on 18th May 2014. Here
 the pure *Iris laevigata* is becoming threatened
 by hybridization with the European yellow
I. pseudacorus.
 Watercolour on paper
 Artist's Collection



Kayoko Miyazawa
 Born Tokyo, Japan
***Citrus unshiu* (Swingle) Markow (Rutaceae)**
 Unshu-mikan (Satsuma)
 Painted from fruiting specimens collected in
 Shizuoka at 193 m in December 2014.
 Watercolour on paper
 Artist's Collection



Yoko Yokoyama
 Born Gunma, Japan 1962
***Farfugium japonicum* (L.) Kitam. (Compositae)**
 Tsuwa-buki
 Painted from flowering specimens collected in
 Yokosuka, Kanagawa at 18 m on
 9th November 2013.
 Watercolour on paper
 Artist's Collection



Yoko Yokoyama
 Born Gunma, Japan 1962
***Rosa onoei* var. *oligantha* (Fr. & Sav.) H. Ohba
 (Rosaceae)**
 Azuma-ibara
 Painted from flowering specimens collected at
 33 m in Sayama, Saitama on 14th May 2014, and
 hips on 17th November 2014.
 Watercolour on paper
 Artist's Collection



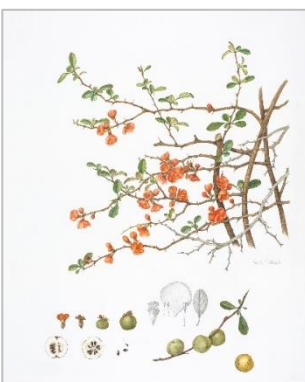
Keiko Yoshida
 Born Yokohama, Japan 1965
Cypripedium macranthos* Sw. f. *rebunense
(Kudô) Ohwi (Orchidaceae)
 Rebun-atsumori-so
 Painted from flowering specimens on Rebun
 Island 2000-2014, with *Maianthemum dilatatum*,
Pedicularis venusta var. *schmidtii* and
Cephalanthera erecta var. *schizuouii*.
 Watercolour on paper
 Artist's Collection



Keiko Yoshida
 Born Yokohama, Japan 1965
***Leontopodium discolor* Beauverd.**
(Compositae)
 Rebun-usuyuki-so
 Painted from flowering specimens collected on
 Rebun Island 2000-2014, with *Empetrum*
nigrum var. *japonicum*, *Vaccinium vitis-idaea*
 and *Chamaepericlymenum canadense*.
 Watercolour on paper
 Artist's Collection



Keiko Yoshida
 Born Yokohama, Japan 1965
Aquilegia flabellata* Sieb. & Zucc. var. *pumila
Kudo (Ranunculaceae)
 Miyama-odamaki
 Painted from flowering specimens collected on
 Rebun Island 2000-2015.
 Watercolour on paper
 Artist's Collection



Noriko Watanabe
 Born Hiroshima, Japan 1954
***Chaenomeles japonica* (Thunb.) Lindl.**
(Rosaceae)
 Kusa-boke
 Painted from flowering specimens collected in
 the Rokko Alpine Botanical Garden on
 7th May 2014.
 Watercolour on paper
 Artist's Collection



Noriko Watanabe
Born Hiroshima, Japan 1954
***Nuphar japonicum* DC. (Nymphaeaceae)**
Ko-hone
Watercolour on paper
Artist's Collection



Akiko Enokido
Born Oaska, Japan 1962
Idesia polycarpa
Li-giri
Painted from flowering specimens collected in
the Kobe municipal arboretum, Hyogo in May
2014 and in fruit in October-November 2014.
Watercolour on paper
Artist's Collection



Akiko Enokido
Born Osaka, Japan 1962
***Nipponanthemum nipponicum* (Franch. ex
Maxim.) Kitam. (Compositae)**
Hama-giku
Painted from flowering specimens collected on
Tanesashi Beach, Hachinohe, Aomori in
September 2014.
Watercolour and graphite on paper
Artist's Collection



Akiko Enokido
Born Osaka, Japan 1962
***Disanthus cercidifolius* Maxim.
(Hamamelidaceae)**
Maruba-no-ki
Painted from flowering specimens collected at
Onocho, Hatsukaichi, Hiroshima in October
2014 and with young leaves in April 2015.
Watercolour and graphite on paper
Artist's Collection



Kaoru Yoneda
Born Kanagawa, Japan 1970
***Rohdea japonica* (Thunb.) Roth.**
(Asparagaceae)

Omoto
Painted from flowering specimens collected in the Kosagoe, Tochigi at 400 m in May 2015 and June 2014 and in fruit in November 2014.

Watercolour on paper
Artist's Collection



Kaoru Yoneda
Born Kanagawa, Japan 1970
***Calystegia japonica* Choisy (Convolvulaceae)**
Hiru-gao

Painted from flowering specimens collected on Mount Tsukaba, Ibaraki in June and August 2014.

Watercolour on paper
Artist's Collection



Hideo Horikoshi
Born Gunma, Japan 1936
***Daucus carota* L. 'Kintokinjin' (Umbelliferae)**
Kintoki-ninjin

Painted from specimens grown in Kawagawa prefecture in June and December 2013.

Watercolour on paper
Artist's Collection



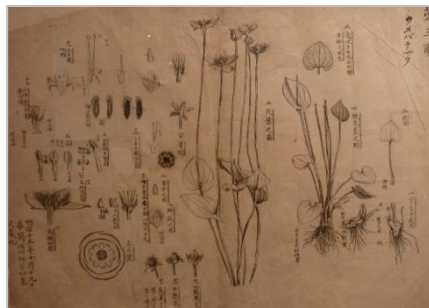
Naoko Yasue
Born Kyoto, Japan 1977
***Aesculus turbinata* Blume (Sapindaceae)**
Tochi-no-ki

Drawn from flowering specimens collected in the Koishikawa Botanic Garden by Professor Jin Murata. Fruit specimen collected in the Makino Botanical Garden.

Pen & ink on paper
Artist's Collection

Gallery 2 – Dr Tomitaro Makino

Philipp von Siebold's chief artist was Keiga Kawahara (1786– 1860) who was already an experienced illustrator. Under Siebold's guidance he produced beautifully artistic and accurate portraits of plants. Keiga's illustrations formed the basis of Siebold and Zuccarini's *Flora Japonica*, published in Leiden between 1835 and 1870. Keiga's work established the European style of scientific botanical illustration in Japan. Chikusai Kato, working in the 1870s was the first botanical artist to be employed at the botanical garden of the newly created Tokyo University. Kato worked under the direction of Keisuke Ito (1803–1901) who had learned western botany from Siebold. In 1830 he published the first list of plant names in Japanese and Latin using Thunberg's *Flora Japonica* (1784). The development of scientific systematic botany in Japan is closely connected with the University of Tokyo and the Koishikawa Botanical Garden. Like many European botanical gardens it started as a medicinal herb garden and was attached to the university in 1877. An outstanding botanist working there was Dr Tomitaro Makino (1862–1957). His influence can be seen today at the Makino Botanic Garden and also the Makino Memorial Museum. He is best known for his illustrations showing different parts of the plant at different seasons. He would draw each part separately and then combine them in a single illustration. His major publication was *Illustrations of the Flora of Japan*, which included many of his composite plates.



Tomitaro Makino
(1862-1957)
Parnassia palustris
1883
Pen & ink on paper
On loan from Kochi Prefectural
Makino Botanical Garden, Japan



Tomitaro Makino
(1862-1957)
Viola violacea
Not dated
Lithograph on paper
On loan from Kochi Prefectural
Makino Botanical Garden, Japan



Tomitaro Makino
(1862-1957)
Nerium oleander var. indicum
1882-1883
Watercolour, pen & ink on paper
On loan from Kochi Prefectural Makino Botanical Garden, Japan



Tomitaro Makino
(1862-1957)
***Viburnum dilatatum* (fruits)**
Not dated
Watercolour on paper
On loan from Kochi Prefectural Makino Botanical Garden, Japan



Tomitaro Makino (1862-1957)
Balanophora japonica
1909
Lithograph on paper
On loan from Kochi Prefectural Makino Botanical Garden, Japan



Tomitaro Makino
(1862-1957)
Mitrastemon yamamotoi
Makino, gen. et sp. nov.
Not dated
Lithograph on paper
On loan from Kochi Prefectural Makino Botanical Garden, Japan



Tomitaro Makino
(1862-1957)
Arisaema ternatipartitum
1881
Pen & ink on paper
On loan from Kochi Prefectural
Makino Botanical Garden, Japan



Tomitaro Makino
(1862-1957)
Prunus subhirtella 1892
Pen & ink on paper
On loan from Kochi Prefectural
Makino Botanical Garden, Japan



Tomitaro Makino
(1862-1957)
Rhododendron weyrichii
Not dated
Pen & ink on paper
On loan from Kochi Prefectural
Makino Botanical Garden, Japan



Tomitaro Makino
(1862-1957)
Magnolia obovata
Not dated
Pen & ink on paper
On loan from Kochi Prefectural
Makino Botanical Garden, Japan



Tomitaro Makino
(1862-1957)
Pinguicula ramosa
1901
Watercolour on paper
On loan from Kochi Prefectural
Makino Botanical Garden, Japan



Tomitaro Makino
(1862-1957)
Prunus serrulata
Not dated
Lithograph on paper
On loan from Kochi Prefectural
Makino Botanical Garden, Japan



Tomitaro Makino
(1862-1957)
Coptis quinquefolia
1892
Watercolour, pen & ink on
paper
On loan from Kochi Prefectural
Makino Botanical Garden, Japan



Tomitaro Makino
(1862-1957)
Aldrovanda vesiculosa
1891
Pen & ink on paper
On loan from Kochi Prefectural
Makino Botanical Garden, Japan



Tomitaro Makino
(1862-1957)
Tricyrtis macrantha
Not dated
Watercolour on paper
On loan from Kochi Prefectural
Makino Botanical Garden, Japan



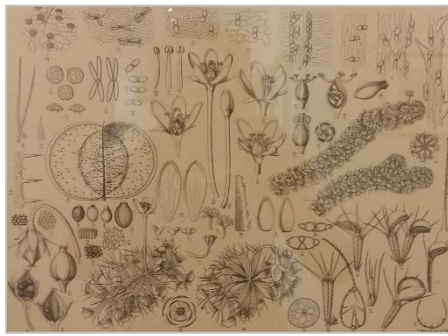
Tomitaro Makino
(1862-1957)
Rhododendron tosaense
1892
Pen & ink on paper
On loan from Kochi Prefectural
Makino Botanical Garden, Japan



Tomitaro Makino
(1862-1957)
Lilium auratum
1902
Lithograph on paper
On loan from Kochi Prefectural
Makino Botanical Garden, Japan



Tomitaro Makino
(1862-1957)
Calypso bulbosa
1911
Lithograph on paper
On loan from Kochi Prefectural
Makino Botanical Garden, Japan



Tomitaro Makino
 (1862-1957)
Aldrovanda vesiculosa
 1891
 Lithograph on paper
 On loan from Kochi Prefectural
 Makino Botanical Garden, Japan

Gallery 3 – Sessai Hattori and Chikusai Kato



Sessai Hattori
 (1807- unknown)
Fallopia japonica
 1872
 Watercolour on paper
 MAKINO Tomitaro's collection
 On loan from Makino Memorial
 Garden and Museum, Japan



Sessai Hattori
 (1807- unknown)
Ficus carica
 1875
 Watercolour on paper
 MAKINO Tomitaro's collection
 On loan from Makino Memorial
 Garden and Museum, Japan



Sessai Hattori
(1807- unknown)
Castanopsis sieboldii
1872
Watercolour on paper
MAKINO Tomitaro's collection
On loan from Makino Memorial
Garden and Museum, Japan



Sessai Hattori
(1807- unknown)
***Taraxacum* sp. and
*Orobanchaceae***
1874
Watercolour on paper
MAKINO Tomitaro's collection
On loan from Makino Memorial
Garden and Museum, Japan



Sessai Hattori
(1807- unknown)
Menyanthes trifoliata
1873
Watercolour on paper
MAKINO Tomitaro's collection
On loan from Makino Memorial
Garden and Museum, Japan



Sessai Hattori
(1807- unknown)
***Aeginetia indica* and
Rhododendron keiskei var.
*keiskei***
1875
Watercolour on paper
MAKINO Tomitaro's collection
On loan from Makino Memorial
Garden and Museum, Japan



Sessai Hattori
(1807- unknown)
Mahonia japonica
1875
Watercolour on paper
MAKINO Tomitaro's collection
On loan from Makino Memorial
Garden and Museum, Japan



Sessai Hattori
(1807- unknown)
***Lilium medeoloides* and *Iris* sp.**
1879
Watercolour on paper
MAKINO Tomitaro's collection
On loan from Makino Memorial
Garden and Museum, Japan



Sessai Hattori
(1807- unknown)
Clematis florida
1877
Watercolour on paper
MAKINO Tomitaro's collection
On loan from Makino Memorial
Garden and Museum, Japan



Sessai Hattori
(1807- unknown)
***Anemone hupehensis* var.
*japonica***
1871
Watercolour on paper
MAKINO Tomitaro's collection
On loan from Makino Memorial
Garden and Museum, Japan



Sessai Hattori
(1807- unknown)
Acer mono var. marmoratum
1871
Watercolour on paper
MAKINO Tomitaro's collection
On loan from Makino Memorial
Garden and Museum, Japan



Sessai Hattori
(1807- unknown)
Citrus maxima
Not dated
Watercolour on paper
MAKINO Tomitaro's collection
On loan from Makino Memorial
Garden and Museum, Japan



Sessai Hattori
(1807- unknown)
Wisteria brachybotrys
1876
Watercolour on paper
MAKINO Tomitaro's collection
On loan from Makino Memorial
Garden and Museum, Japan



Sessai Hattori
(1807- unknown)
Prunus armeniaca
1872
Watercolour on paper
MAKINO Tomitaro's collection
On loan from Makino Memorial
Garden and Museum, Japan



Hattori Sessai
(1807- unknown)

Setaria viridis

1876

Watercolour on paper
MAKINO Tomitaro's collection
On loan from Makino Memorial
Garden and Museum, Japan



Sessai Hattori
(1807- unknown)

Camellia japonica

1873

Watercolour on paper
MAKINO Tomitaro's collection
On loan from Makino Memorial
Garden and Museum, Japan



Chikusai Kato
(dates unknown)

Chrysanthemum morifolium

Early Meiji period, c 1870s

Watercolour on paper
On loan from Koishikawa Botanical
Gardens, University of Tokyo



Chikusai Kato
(dates unknown)

Lilium leichtlinii* var. *leichtlinii

Early Meiji period, c 1870s

Watercolour on paper
On loan from Koishikawa Botanical
Gardens, University of Tokyo



Chikusai Kato
(dates unknown)
Piper kadsura
Early Meiji period, c 1870s
Watercolour on paper
On loan from Koishikawa Botanical
Gardens, University of Tokyo



Chikusai Kato
(dates unknown)
Rhododendron makinoi
Early Meiji period, c 1870s
Watercolour on paper
On loan from Koishikawa Botanical
Gardens, University of Tokyo



Chikusai Kato
(dates unknown)
Ginkgo Biloba. L.
Early Meiji period, c 1870s
Watercolour on paper
On loan from Koishikawa Botanical
Gardens, University of Tokyo



Chikusai Kato
(dates unknown)
Prunus lannesiana
Early Meiji period, c 1870s
Watercolour on paper
On loan from Koishikawa Botanical
Gardens, University of Tokyo



Chikusai Kato
 (dates unknown)
Typhonium divaricatum
 Early Meiji period, c 1870s
 Watercolour on paper
 On loan from Koishikawa Botanical
 Gardens, University of Tokyo



Chikusai Kato
 (dates unknown)
Wisteria floribunda
 Early Meiji period, c 1870s
 Watercolour on paper
 On loan from Koishikawa Botanical
 Gardens, University of Tokyo



Chikusai Kato
 (dates unknown)
Aesculus turbinata
 Early Meiji period, c 1870s
 Watercolour on paper
 On loan from Koishikawa Botanical
 Gardens, University of Tokyo



Chikusai Kato
 (dates unknown)
Bauhinia japonica
 Early Meiji period, c 1870s
 Watercolour on paper
 On loan from Koishikawa Botanical
 Gardens, University of Tokyo



Chikusai Kato
 (dates unknown)
Begonia grandis
 Early Meiji period, c 1870s
 Watercolour on paper
 On loan from Koishikawa Botanical
 Gardens, University of Tokyo

Gallery 4 – Japanese art in Kew’s Collections



James Curtis
 (dates unknown)
Camellia japonica
 1825
 Watercolour on paper
 Kew Collection



Lilian Snelling
 (1879-1972)
Glaucidium palmatum
 1936
 Watercolour on paper
 Kew Collection



Lilian Snelling
(1879-1972)
Prunus campanulata
1939
Watercolour on paper
Kew Collection



Margaret Stones
Born Colac, Australia 1920
Acer nikoense
1962
Watercolour on paper
Kew Collection



Margaret Stones
Born Colac, Australia 1920
Gentiana makinoi
1962
Watercolour on paper
Kew Collection



Pandora Sellars
Born Herefordshire, England
1936
Arisaema yamatense subsp. sugimotoi
1984
Watercolour on paper
Kew Collection



Valerie Price
Born Sussex, England 1958
Cyripedium japonicum
1987
Watercolour on paper
Kew Collection



Ann Farrer
Born Melbourne, Australia 1950
Skimmia japonica subsp. reevesiana
1987
Watercolour on paper
Kew Collection



Christabel King
Born London, England 1950
Daphne kiusiana
1989
Watercolour on paper
Kew Collection



Ann Farrer
Born Melbourne, Australia 1950
Asarum yakusimense
1994
Watercolour on paper
Kew Collection



Ann Farrer
Born Melbourne, Australia 1950
Phyllostachys aureosulcata
1995
Watercolour on paper
Kew Collection



Lilian Snelling (1879-1972)
Lilium japonicum
1928
Watercolour on paper
Kew Collection



S Watts after M Hart
***Chrysanthemum indicum* var.**
1822
Engraving on paper
Kew Collection



William Say after E D Smith
**Semi-double Quilled Orange
Chrysanthemum and Small
Yellow *Chrysanthemum***
1828
Engraving on paper
Kew Collection



Y Kudo after C Suzaki
Prunus sargentii
Not dated
Engraving on paper
Kew Collection



Unknown artist
Abies firma* and *Abies sachalinensis
Not dated
Lithograph on paper
Kew Collection



Marianne North
(1830-1890)
From a Gate in Kyoto
1880
Oil on card
Kew Collection



Marianne North
(1830-1890)
Great Bell of the Cheone Temple, Kyoto
1875
Oil on card
Kew Collection

Gallery 6 – Japanese artists in the Shirley Sherwood Collection

“Botanical art has always been an important part of Japanese culture. Nowadays there are societies and classes that flourish all over Japan. Nevertheless when I started acquiring botanical paintings from Japan 25 years ago it was quite hard to meet the artists themselves. Luckily I was introduced by the botanical art enthusiast Mr Kazunori Kurokawa who invited a number of artists to meet me in Tokyo. Keiko Saino and Chica Bjerrum also helped me with communication and travelled with me to meet artists and see exhibitions all over Japan. In 1998 and 2006 I held two major exhibitions of my collection in Tokyo. These were extremely well attended with thousands of people queuing to get up to the Seiji Togo Memorial Sompo Japan Nipponkoa Museum of Art (formerly Yasuda Kasai Museum of Art) where ‘Sunflowers’ by Van Gogh was also on show at the top of the skyscraper. Now, it is much easier to make contact with individual artists and to see their work on the internet. I am very proud that the works of so many Japanese artists of outstanding skill and ability can be seen here in the Shirley Sherwood Gallery.”

Dr Shirley Sherwood (OBE)



Asuka Hishiki
Born Kyoto, Japan 1972
Japanese horseradish, Wasabi:
Eutremia japonicum
Watercolour on paper

Shirley Sherwood Collection



Hideo Horikoshi
Born Gunma, Japan 1936
Taro: *Colocasia esculenta* ‘Dodear’
Watercolour on paper

Shirley Sherwood Collection



Mariko Imai
Born Kanagawa, Japan 1942
Asarum muramatsui
Watercolour on paper

Shirley Sherwood Collection



Mariko Imai
Born Kanagawa, Japan 1942
Nepenthes truncata
Watercolour on paper

Shirley Sherwood Collection



Mariko Imai
Born Kanagawa, Japan 1942
Nepenthes rafflesiana
Watercolour on paper

Shirley Sherwood Collection



Mariko Imai
Born Kanagawa, Japan 1942
Troubled Tree or Insect Bitten Tree
Seeds of Morning Glory
Seeds of Ebine or Japanese Wild Orchid
Three early pencil sketches

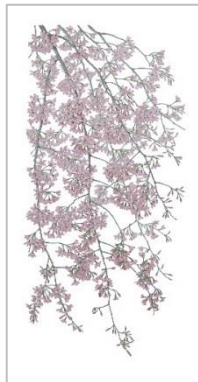
Shirley Sherwood Collection



Mieko Ishikawa
Born Tokyo, Japan 1950
The Oshima Cherry, Oshima zakura:
Prunus speciosa
Watercolour on paper
Shirley Sherwood Collection



Mieko Ishikawa
Born Tokyo, Japan 1950
Acorns from Brunei
Watercolour on paper
Shirley Sherwood Collection



Mieko Ishikawa
Born Tokyo, Japan 1950
Flowering Cherries:
Prunus pendula 'Pendula-rosea'
Watercolour on paper on board
Shirley Sherwood Collection



Mieko Ishikawa
Born Tokyo, Japan 1950
Nepenthes villosa
Watercolour on vellum (reindeer)
Shirley Sherwood Collection



Noboru Isogai
Born Gunma , Japan 1935
Pandanus tectorius
Watercolour on paper

Shirley Sherwood Collection



Seiko Kijima
Born Hyogo, Japan 1948
Akebia quinata
Acrylic and pencil on paper

Shirley Sherwood Collection



Seiko Kijima
Born Hyogo, Japan 1948
**Vegetables, including carrot, potato
leek and ground nuts**
Acrylic and pencil on paper

Shirley Sherwood Collection



Mariko Kojima
Born Hoten, China 1937
Works Fuji Shizuoka, Japan
Strawberry
Watercolour on paper
Designed for a stamp

Shirley Sherwood Collection



Mariko Kojima
Born Hoten, China 1937
Works Fuji Shizuoka, Japan
Rose
Watercolour on paper
Shirley Sherwood Collection



Asako Kuwajima
Born Tokyo, Japan 1948
Chinese Strawberry Tree:
Myrica rubra
Watercolour on paper
Shirley Sherwood Collection



Kimiyo Maruyama
Born Hyogo, Japan 1936
Japanese Persimmon:
Diospyros kaki
Watercolour on paper
Shirley Sherwood Collection



Kimiyo Maruyama
Born Hyogo, Japan 1936
Pinus thunbergii
Watercolour on board
Shirley Sherwood Collection



Mitsuharu Mishima
Born Tokyo, Japan 1932
Tillandsia xerographica
Watercolour on paper

Shirley Sherwood Collection



Yasuko Murakami
Born Tokyo, Japan 1934
Ampelopsis brevipedunculata
Watercolour pencil pen and ink on paper

Shirley Sherwood Collection



Miyoko Okakura
Born Tokyo, Japan 1940
Pelargonium cv.
Watercolour on paper

Shirley Sherwood Collection



Takeko Sagara
Born Fukuoka, Japan 1930
Cymbidium ensifolium
Watercolour on paper

Shirley Sherwood Collection



Manabu Saito
Born Tokyo, Japan 1929, lives in USA

Ginkgo biloba

Watercolour on paper

Shirley Sherwood Collection



Masako Sasaki

Born Japan 1939

Streptocarpus cv.

Watercolour on paper

Shirley Sherwood Collection



Hiroki Sato

Japan (1925-1998)

Adonis vernalis

Watercolour on paper

Shirley Sherwood Collection



Kazuto Takahashi

Born Changchun, China 1951

Works Japan

'Homage to Durer'

Sow Thistle:

Sonchus oleraceus

Watercolour on paper

Shirley Sherwood Collection



Kumiko Takano
Born Shenyang, China 1945
Works Japan
Passiflora edulis
Watercolour on paper
Shirley Sherwood Collection



Michiko Toyota
Born Tokyo, Japan 1952
Seedlings of Oak:
Quercus serrata
Watercolour on paper
Shirley Sherwood Collection



Yoko Uchijo
Born Tokyo, Japan 1949
Slipper Orchid:
***Paphiopedilum* sp.**
Watercolour on pencil
Shirley Sherwood Collection



Yoko Uchijo
Born Tokyo, Japan 1949
Japanese Stewartia:
Stewartia pseudocamellia
Watercolour on paper
Shirley Sherwood Collection



Noriko Watanabe
Born Hiroshima, Japan 1954
***Rosa filipes* 'Kiftsgate', in May**
Watercolour on paper

Shirley Sherwood Collection