



BROMELETTER

***THE OFFICIAL JOURNAL OF
THE BROMELIAD SOCIETY
OF AUSTRALIA INC.***

Merry Christmas

Issue: **Volume 53 Number 6 - November / December 2015.**

CONTENTS

Management Details	2,3, 17,22
September - Plant of the Month, Margaret Draddy Artistic Competition	4,5
<i>Alcantarea australiana</i> —A new Species	6,8,9
BSA Spring Show - results and photos	7,10,11,12,14,16
Caution when naming plants	17
A note from the Editor	17
New Members	18
Seed Bank	19

Time to RENEW your MEMBERSHIP

Membership renewal is due **JANUARY 1st** each year.

Please consider whether or not you wish to receive your Bromeletter by email (as a PDF)

Please return the enclosed (attached) renewal form to renew and update any details which have changed (or email the form found on our website).



BROMELETTER is published bi-monthly at Sydney by The Bromeliad Society of Australia Incorporated.

Deadlines for articles: 15th of February, April, June, August, October and December, To allow for publishing in the first week of March, May, July, September, November and January.

COMMITTEE

President	Ian Hook (ianhook1@bigpond.com)	0408 202 269
Vice President (1)	Meryl Thomas	0401 040 762
Vice President (2)	Ron Farrugia	02 9533 2546
Secretary	Patricia Sharpley	0439 672 826
Treasurer	Alan Mathew	02 9516 5976
Editor & Memb Sec	Kerry McNicol (membsec@bromeliad.org.au)	0439 998 049
Member	Helga Nitschke	02 9624 1528
Member	John Cornale	02 9823 0987
Member	Eugene Morris	02 9743 6443
Member	Bob Sharpley	0439 672 826
Member	Joy Clark	02 4572 3545

**BROMELIAD SOCIETIES AFFILIATED WITH THE BROMELIAD
SOCIETY OF AUSTRALIA INC.**

Bromeliad Society of Victoria.

The Secretary, P.O. Box 101, Darling. Vic. 3145

Caboolture & Districts Brom. Society Inc.,

The Secretary, P.O. Box 748, Caboolture Qld. 4510.

Cairns Bromeliad Society Inc .

The Secretary, P.O. Box 28, Cairns. Qld. 4870

Gold Coast Succulent & Brom. Society

The Secretary, P.O. Box 94, Southport B.C., Southport Qld. 4215.

The Hunter Bromeliad Society Inc.,

C/- 59 Barton St, Mayfield. NSW 2304.

Townsville Bromeliad Study Group,

C/- Barb Davies, 5 Sharp St, MT LOUISA. Qld 4814.

Material for Bromeletter - address to:

e-mail: membsec@bromeliad.org.au

All other correspondence to:

**The Secretary, Bromeliad Society of Australia
Inc.,**

P.O. Box 340, RYDE NSW 2112.

Please Note

**BROMELIADS will be on sale at the Club
from 12.30 p.m. before the monthly meeting.**

MEETING VENUE AND TIME

**SECOND SATURDAY OF EACH MONTH AT THE
BURWOOD CLUB,**
Cnr. Shaftesbury Road and Clifton Avenue, Burwood.
Meetings commence at 1.00 p.m.
in the First Floor Conference Rooms/Auditorium.

MEETINGS PROGRAM

November 14th - Show & Tell; Sales; Raffle; Competitions
*There will also be discussion on the progress of **finding a new venue** for our meetings, members input is integral to this very important decision making process, please come along with your thoughts.*

December 12th- Show & Tell; Sales; Raffle; Competitions
Christmas Luncheon, Bromel-dip, Santa.

EVENTS CALENDAR

'Sunny Broms' Conference - 31/03-2/04 2017

Life Members:

Grace Goode O.A.M **Eugene Morris**
Bill Morris **Ron Farrugia**
Ruby Ryde **Graham McFarlane**

BSA Website

www.bromeliad.org.au
president@bromeliad.org.au
President Ian's Mobile:
0408 202 269

Treasurer's Report

Treasurer Alan Mathew gave the following details regarding our :

Operating Account to August 31, 2015:

Brought Forward	\$ 31,235.50
Plus Income:	984.33
Less expenses	852.36
Bank Statement as at 31/08/2015	\$ 31,367.47

Operating Account to September 30, 2015:

Brought Forward	\$ 31,367.47
Plus Income:	8,022.95
Less expenses	4,642.82
Bank Statement as at 30/09/2015	\$ 34,747.60



GREYLINGS ATTORNEYS

**Wills | Estate management | Asset protection
Conveyancing | General advice**

Ph: 9264 0676

4/914 Military Road Mosman Above the Burger Shed

July 2015

Plant of the Month Competition

Open

1st
2nd
3rd

Judge's Choice

T. streptocarpa
T. kautskyi
T. recurvifolia var subsecundifolia

Carolyn Bunnell
Ron Farrugia
Ron Farrugia

Open

1st
2nd
3rd
=3rd

Members' Choice

T. streptocarpa
T. kautskyi
T. scaposa (twisted form)
Tillandsia tectorum

Carolyn Bunnell
Ron Farrugia
Joy Clark
Werner Raff

Novice

1st
2nd
3rd

Judge's Choice

T. straminea (small form)
T. Bergos
Vr. Son of Tiger Tim

Lindsay Munro
Lindsay Munro
Elizabeth Mudriczk

Novice

1st
2nd
3rd

Members' Choice

Vr. Son of Tiger Tim
T. straminea (small form)
T. Bergos

Elizabeth Mudriczk
Lindsay Munro
Lindsay Munro

Margaret Draddy Artistic Competition.

1st
2nd
3rd
=3rd

Very Hungry Caterpillar
Carousel
Twin Towers
Spring has Sprung

Joy Clark
Carolyn Bunnell
Werner Raff
Warril Evans



T. streptocarpa



T. kautskyi



T scaposa
(twisted form)



T. Bergos



T.recurvifolia
var subsecundifolia



T tectorum



T. straminea



Vr. Son of Tiger Tim



Carousel

Margaret Draddy Artistic



Very Hungry Caterpillar



Twin Towers



Spring has Sprung

A New Species - *Alcantarea australiana*

Collated from article in Bromeliaceae, Second quarter 2015 by Rob Smythe, and information & photographs supplied by Mark Paul.

DISTRIBUTION, ECOLOGY AND CONSERVATION. Mark Paul

Alcantarea australiana is known from two collections only, both from the city of Campos dos Goytacazes, Rio de Janeiro's northern region. Originally, seeds were collected in the District of Imbe in fields, and taken for cultivation in Australia. Other examples also were collected in the same city, but in the region of Morro de Itaoca. New studies in field is needed to evaluate the state of conservation, in spite of the collectors indicating that the populations are large, the region of morro do Itaoca has been suffering with the impacts of mining.

ETYMOLOGY.

The choice of the name has a double meaning: it pays homage to Australia, where parents of the new species were grown and initially studied by collector Robert Smythe, and for being in the *A. extensa* complex with a more southern distribution, reaching the State of Rio de Janeiro.

The seed was collected by Alan Carle, a Cairns based horticultural consultant and plant collector in 2005(?) from an insulberg at Imbe in northern RDJ state Brazil, while he was there collecting other things. On his return he sent the seed to one of his mates , Bruce Dunstan, who he knew was interested in Alcantareas. He said it was just a green Alcantarea. Bruce set the seed and shared it with Peter Tristram and me, as we have done with most things. We just called it Alcantarea Imbe to link it with its collection site.

We all flowered it a few years later with its black scape, green branching and small golden flowers. It was obviously a distinct species, I sent photos of various unknown Alcantarea species including Imbe to the three current Alcantarea taxonomists and only Leonardo Versieux responded.

Rob Smythe, a bromeliad grower from Townsville has more recently become interested in bromeliad taxonomy with retirement and has been pursuing various species with the taxonomists . The result was that after sending many photos, my drawings of the floral and scape bracts , Robs taxonomic review of it as a new species, and Leonardo, eventually revisiting the collection site at

. . . . cont p8

SPRING SHOW - RESULTS

Grand Champion	<i>Vriesea</i> 'Angela'	Carolyn Bunnell
Reserve Champion	<i>Tillandsia streptophylla</i>	Carolyn Bunnell
Species Award	<i>Tillandsia streptocarpa</i>	Carolyn Bunnell
Novice Champion	<i>Neoregelia</i> 'Predator'	Elaine Fletcher

CLASS 1. AECHMEA May consist of multiple connected plants. Potted.

<i>Aechmea roberto-seidelii</i>	1st	Carolyn Bunnell
<i>Aechmea</i> 'Ensign'	2nd	Edwina Caruana & Stephen Wain
<i>Aechmea racinae</i>	3rd	Edwina Caruana & Stephen Wain

CLASS 2. BILLBERGIA Single specimen only. Pups allowed PROVIDED they are obviously too immature for removal. Potted.

<i>Billbergia</i> 'Domingos Martins' x 'Georgia'	1st	Carolyn Bunnell
<i>Billbergia</i> 'Hallelujah'	2nd	John & Jan Townsend
<i>Billbergia</i> 'Ruby Eyes'	3rd	Carolyn Bunnell

CLASS 3. BILLBERGIA COLONY May consist of multiple connected plants. Potted.

<i>Billbergia</i> 'Moon Tiger'	1st	Carolyn Bunnell
<i>Billbergia amoena</i>	2nd	Joe De Gabriel
<i>Billbergia</i> 'Kahibah'	3rd	Joe De Gabriel

CLASS 4. CRYPTANTHUS May consist of multiple connected plants. Potted.

<i>Cryptanthus</i> 'Blood Red'	1st	Lydia Hope
<i>Cryptanthus</i> 'Ruby'	2nd	Edwina Caruana & Stephen Wain
<i>Cryptanthus</i> 'Ruby'	3rd	Joe De Gabriel

CLASS 5. NEOREGELIA SPECIES May consist of multiple connected plants. Potted.

<i>Neoregelia olens</i> cv. 'Marie'	1st	Carolyn Bunnell
-------------------------------------	-----	-----------------

CLASS 6. MINIATURE NEOREGELIA May consist of multiple connected plants. Potted or mounted.

<i>Neoregelia</i> 'Morning Rain'	1st	Carolyn Bunnell
<i>Neoregelia olens</i> cv. 'Marie' x '696'	2nd	Carolyn Bunnell
<i>Neoregelia</i> 'Golden Jewels'	3rd	Carolyn Bunnell

CLASS 8. NIDULARIUM/CANISTROPSIS May consist of multiple connected plants. Potted.

<i>Nidularium innocentii</i>	1st	Carolyn Bunnell
<i>Nidularium</i> 'Lila Rosea' (maybe campos-portoi)	2nd	Joe De Gabriel
<i>Nidularium fulgens</i> red form	3rd	Joe De Gabriel

CLASS 9. TILLANDSIA Single specimen only . Pups allowed PROVIDED obviously too immature for removal. Potted or mounted.

<i>Tillandsia streptophylla</i>	Reserve Champion & 1st	Carolyn Bunnell
<i>Tillandsia ehlersiana</i> x <i>streptophylla</i>	2nd	Kerry McNicol
<i>Tillandsia tricolor</i> large form	3rd	Lydia Hope

Imbe [where he also found a second new *Alcantarea* species] last year, he named it 'australiana' for all the Australian content in its discovery, taxonomy and ongoing *Alcantarea* interest, hence linking their providence source, particularly collection localities to them is important.

*There are around 200 different *Alcantareas* grown in Australia, many are undescribed species.

Now to help you find it in your collection. - Rob Smythe

1. Is circulating under a couple of names but has Imbe' on its tag.
2. A very striking **black** backbone to its inflorescence.
3. Stamens are exceptional. They can fold way back forming a wheel of anthers with filaments looking like wheel spokes.
4. Grown in the sun after a long time I could not tell *A. Australiana* from *A. glaziouana*, but realised as my plants matured there was a plant with more obviously triangular leaves which allowed me to separate the two.
5. Flowers are somewhere between *A. patriae* and *A. extensa*. Stamens are not bundled like *A. patriae*. Floral bracts are more or less concoloured green.

Flowers are night flowering, opening at dusk. At first sight appear to be a golden colour with a tinge of green. Fully matured at about 2 a.m. petals are haphazardly curled up somewhat like a dishevelled *A. patriae* flower (a shiny light brown to burnt orange). By morning they have gone through a yellowish stage as petals unfurl. Flowers slightly second upwards, adjacent flowers subtending at an angle of 130 degrees. With newly separating buds this can be as low as 105 degrees and hence obvious when looking at the tip of a branch. Rachilla is geniculate (zig-zag) to a maximum of 130 degrees.

6. Flower count per branch is only topped by *A. trepida* within the *extensa* complex, with up to 60 flowers per branch, which are themselves are 160cm long.

The disposition of the branches start erect but quickly go patent. It holds this shape for a long time but eventually succumbs, due to the weight of the seed pods and the extreme lengths of branches, and becomes pendulous.

Rob Smythe's article can be read in full in *Bromeliaceae Second Quarter 2015. The newsletter of the Bromeliad Society of Queensland.*

ALCANTAREA AUSTRALIANA



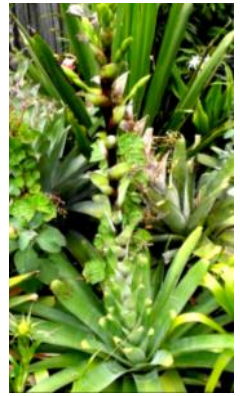
Black backbone to inflorescence



Stamens folding to form a wheel



Mature leaves are more obviously triangular, rather than rounded



Emerging flower spike



Flower count high, branches begin erect, eventually becoming patent, then pendulous.



BSA SPRING SHOW



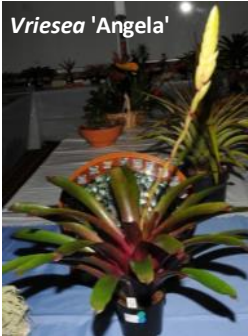
Tillandsia streptophylla



RESERVE CHAMPION

GRAND CHAMPION

Vriesea 'Angela'



Tillandsia streptocarpa



SPECIES AWARD

Apologies to our **NOVICE CHAMPION & 1ST PLACE** winner , Elaine Fletcher, with *Neoregelia Predator*, we somehow neglected to get a photograph of her beautifully grown specimen.

Aechmea roberto-seidellii



Aechmea 'Ensign'



Aechmea racinae



Billbergia amoena



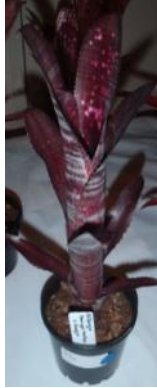
Billbergia 'Moon Tiger'



Billbergia 'Kahiba'



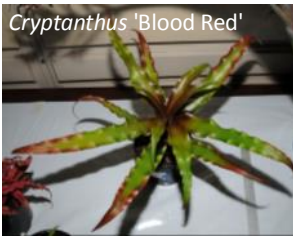
Billbergia
'Domingos
Martins' x
'Georgia'



Billbergia
'Hallelujah'



Billbergia
'Ruby
Eyes'



Cryptanthus 'Blood Red'



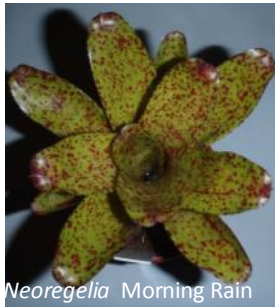
Cryptanthus 'Ruby'



Cryptanthus 'Ruby'



Neoregelia olens cv Marie



Neoregelia Morning Rain



Neoregelia olens cv Marie
x 696



Nidularium innocentii



Nidularium Lila Rosea
(campos-portoi?)



Nidularium fulgens
(red form)



Neoregelia Golden Jewels



T. ehlersiana x streptophylla
(Lucille)



T. tricolor (large form)



T. fasciculata minor



T. argentina



T. 'White Cloud'



Vr. ospinae x Poelmanii



Vr. Red Chestnut x fenestralis



Neoregelia
'Blushing Zebra'

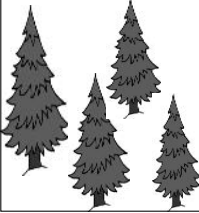


Neoregelia hybrid

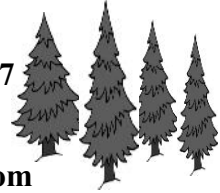


Racinae crispera

PINEGROVE BROMELIAD NURSERY



Ross Little & Helen Clewett
 114 Pine Street, Wardell
 P O Box 385, Wardell NSW 2477
 Phone/Fax: (02) 6683 4188



E-mail
pinegrovebromeliads@bigpond.com

OFFICE-BEARERS:

Book Sales	Ian Hook
Librarian	Graham MacFarlane
Catering	Helga Nitschke; Lydia Hope
Raffle Sales	Peter Fitzgerald
Pots, Labels, etc - Sales	Ron Farrugia
Plant of the Month	Terence Davis
Show Registrar	Terence Davis
Show Co-ordinator/s	Ian Hook; Terence Davis
Purchasing Officer	Robyn Firth
Show Display	Joy Clark

LITERATURE

<u>TITLE</u>	<u>AUTHOR</u>	<u>PRICE</u>
Growing Bromeliads - 3rd. Edition.	Bromeliad Society of Australia Inc.	\$10.00
Bromeliads, A Cultural Manual. (Rev. Edition 2007)	BSI	\$5.00
Bromeliads- The Connoisseur's Guide, 2007.	Andrew Steens	\$20.00

LITERATURE:- *For Mail Order delivery cost*, please contact:

librarian@bromeliad.org.au

Or write to:

P.O. Box 340, Ryde. 2112

For the full list of Literature for sale, go to

<http://www.bromeliad.org.au/Contacts/BSALibrarian.htm>

SPRING SHOW - RESULTS ... cont**CLASS 10. TILLANDSIA COLONY May consist of multiple connected plants.****Potted or mounted.**

<i>Tillandsia streptocarpa</i>	Species Award & 1st	Carolyn Bunnell
<i>Tillandsia fasciculata minor</i>	2nd	Kerry McNicol
<i>Tillandsia argentina</i>	3rd	Carolyn Bunnell

CLASS 11. VRIESEA May consist of multiple connected plants. Potted.

<i>Vriesea 'Angela'</i>	Grand Champion & 1st	Carolyn Bunnell
<i>Vriesea ospinae x Poelmanii</i>	2nd	Edwina Caruana & Stephen Wain
<i>Vriesea erythroductylon</i> cv 'White Cloud'	3rd	John & Jan Townsend

CLASS 12. FOLIAGE / VARIEGATED May be multiple connected. Potted/mounted.**Immature inflorescence only, not above leaves.**

<i>Vriesea</i> Red Chestnut <i>x fenestralis</i>	1st	Carolyn Bunnell
<i>Neoregelia</i> 'Blushing Zebra'	2nd	Carolyn Bunnell
<i>Neoregelia</i> hybrid	3rd	Carolyn Bunnell

CLASS 13. OTHER GENERA May consist of multiple connected plants.**Potted, or mounted if appropriate.**

<i>Racinae crispera</i>	1st	Chris Larson
<i>Canistrum triangulare</i>	2nd	Kerry McNicol
<i>Orthophytum</i> 'Warren Loose' cv gurkenii	3rd	Joy Clark

CLASS 14. INTERGENERIC May consist of multiple connected plants. Potted.

<i>xNeophytum</i> 'Galactic Warrior'	1st	Kerry McNicol
<i>xNiduregelia</i> 'Namara'	2nd	John & Jan Townsend
<i>xBiltanthus</i> 'Red Burst'	3rd	Carolyn Bunnell

CLASS 15. MOUNTED BROMELIAD/S Various plants, but NOT Tillandsia, connected or not.**Suitably mounted.**

<i>Canistrum triangulare</i>	1st	Edwina Caruana & Stephen Wain
<i>Neoregelia</i> 'Cheers'	2nd	John Schembri
<i>Aechmea capixabae</i>	3rd	Edwina Caruana & Stephen Wain

CLASS 16. TERRESTRIAL BROMELIAD Not elsewhere included. May consist of multiple connected plants. Potted.

<i>Dyckia</i> hybrid	1st	Carolyn Bunnell
<i>Dyckia fosteriana</i> 'Silver'	2nd	Carolyn Bunnell
<i>Orthophytum leprosum</i>	3rd	Joe De Gabriel

CLASS 17. ARTISTIC ARRANGEMENT Mostly Brom. material. May be multiple plants, or parts of. Embellishments allowed.

'Tilly Cart'	1st	Joy Clark
'Oranges & Lemons'	2nd	Carolyn Bunnell
'Brom Arrangement'	3rd	Edwina Caruana & Stephen Wain

CLASS 18. NOVICE May consist of multiple connected plants. Potted or mounted.

<i>Neoregelia</i> 'Predator'	Novice Champion & 1st	Elaine Fletcher
------------------------------	-----------------------	-----------------

COLLECTORS' CORNER

BROMELIADS – a large colourful range of Bromeliads, both species and hybrids of many genera

Includes a very large range of Tillandsias.
A mail order list of Tillandsias is available upon request.

We also specialize in orchids, cacti, succulents, hoyas, bonsai and carnivorous plants, **PLUS** gems, fossils, natural history, books and much **MORE!**



810 Springvale Rd., Braeside
VIC 3195

PH: 03 9798 5845, FAX: 03 9706 3339

E-MAIL: sales@collectorscorner.com.au

WEBSITE: www.collectorscorner.com.au

Open 9am-5pm 7 days a week.

M. J. PATERSON

212 Sandy Creek Road,
GYMPIE QLD 4570

✿ Large Range of Bromeliads For Sale, especially our own hybrid *Neoregelias*, *Tillandsias*, *Cryptanthus* and *Vrieseas*

Do call in if you are up this way.

But, please, phone first.

Phone/Fax: (07) 5482 3308.

E-mail: wm_paterson@bigpond.com

Also available

Bromeliad Hybrids. "For My Own Satisfaction" Book 1. Neos. "For My Own Satisfaction" Book 2. Crypt., Til., Vr., etc.

Books available on-line at www.bromeliad-hybrids.com

MIDHURST BROMELIAD NURSERY

Specialist Growers of Tillandsias

And Other Genera.

**Hard grown to suit all Australian conditions.
Wholesale and Mail Order only.**

**WRITE FOR FREE PRICE LISTS OF TILLANDSIA
AND OTHER GENERA TO:**

P.O. Box 612,

Hurstbridge, Vic. 3099

Phone: (03) 9718 2887.

Fax: (03) 9718 2760

E-mail: mossy@melbpc.org.au

FOREST DRIVE NURSERY

Prop: Peter Tristram.

C/- P.O. BOX 2, BONVILLE NSW, 2441

(a few miles south of Coffs Harbor.)

**Specialising in SPECIES and VARIEGATES
from mostly imported stock.**

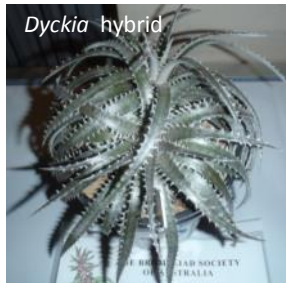
TILLANDSIAS to titillate the most discerning fanciers.

Beautiful VRIESEAS (including 'silver' species).

GUZMANIAS, AECHMEAS, NEOREGELIAS, etc.

Visitors welcome—phone first: (02) 6655 4130 A.H.

Send S.A.E. for MAIL ORDER list of quality plants.

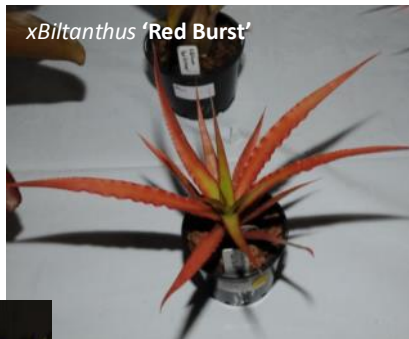


Orthophytum 'Warren Loose'



Orthophytum leprosum

xNeophytum Galactic Warrior



Oranges & Lemons

xBiltanthus 'Red Burst'

Tilly Cart



Brom Arrangement



CAUTION

INCORRECT NAMING OF OUR PLANTS

From time to time, you may look at the name on a plant and think, *'That isn't quite right'*, or *'I have that, with another name!'* One name that crops up periodically is *Neoregelia* '40 Winks'. Many of us have had this plant for many years, but when you go looking to check it 'credentials' (in the BCR or perhaps FCBS photo index) you may not find it.

I remember doing this years ago, and eventually finding *Neoregelia* 'Forty Six Winks'! Curiously, at around the same time, that catchy jingle (some may say irritating!) for the bedding warehouse was around —(now you have to sing this) '40 winks—40 hour sale'! It got so much airplay and obviously into our 'unconscious' that in writing the tag, it became '40 Winks'.

So it may be worth your while to 'check' the name on the tag, and perhaps the photo, if only for your own satisfaction that your new acquisition is actually what it says it is!

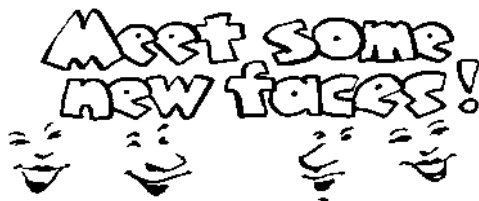
Please Note

2015 October Plant of the Month Competition and Meeting News items and photographs will be included in Bromeletter No1, for 2016, as will our normal reports for November / December 2015.

ALSO a change of **Editor** will take place over the next couple of months, our new **Vice-President, Meryl Thomas**, has shown keen interest in helping out and has offered to 'take on' the Editorship of *Bromeletter*. So this will be transitioning over the next couple of months ready for the new year.

It has been interesting, informative and very hectic at times, Being Editor, and I thank the patience the members have shown with the 'glitches'/ errors which have occurred from time to time. I am certain Meryl will certainly maintain and indeed improve the standard of our newsletter, to pique the interests of our many members. New contact details will be published next issue.

The (outgoing) Editor, Kerry McNicol



WELCOME TO NEW MEMBERS.

We continue to attract new members into the Society and would like to welcome our most recent enthusiasts:

Louise & Graham Kelly, Sandra Fong, Michelle Johansson, Natalie Wilson, Wendy Reid, Brett Llewellyn, Les & Peter Molley –Sterling and Erik van Zuilekom
have recently joined our group. If you would like to become a Member, please see details below.

MEMBERSHIP APPLICATION:

ANNUAL SUBSCRIPTION: Renewal due January 1st for membership year January to December.

Membership: Australia A\$25
Overseas Membership: Asia/Pacific Zone A\$40. Rest of the World A\$45.

New Membership requires a \$5 joining fee, plus Annual Subscription.
(Those joining after October 1st are covered for the following year.)

Note: Un-financial members must add \$5 rejoining fee when re-applying for membership.

Members will become 'un-financial' if renewals have not been received by the end of our Autumn Show.

MAIL ORDER PAYMENTS BY MASTERCARD/VISA. (Subject to A\$10.00 minimum.)

Members using Mastercard or Visa mail order facility should provide the following details, printed clearly in block letters, on a separate sheet of paper:-

- Name and address of **MEMBER**.
- **TYPE** of card (Visa, Mastercard)
- **CARDHOLDER** name details, as shown on card.
- Mastercard/Visa **number** and **expiry date**.
- **CARDHOLDER** signature (essential).
- Payment details (membership renewal, book purchase, postage, etc.) with \$A amounts for each item.

SEED BANK

Thanks go to all those who have donated seed.



Seeds cost 50¢ per packet for Members and Seed Bank supporters (plus postage) or \$1 per packet (plus postage) for all other enquiries:

Enquiries for seeds should be directed to

Terry Davis

(02) 9636 6114 or 0439 343 809

Below is the list of **most recently** added seed to our Seed Bank.

<i>T. gardneri</i>	03/09/15	Terry Davis
<i>Vriesea racinae</i>	13/ 09/15	Terry Davis
<i>T. braziliensis</i>	10/2015	Ted Boon
<i>T. capillaris</i> (was var <i>incana</i>)	5/10/2015	Terry Davis
<i>t. seleriana large form</i>	6/10/2015	Terry Davis
<i>T. magnusiana</i>	9/10/2015	Terry Davis
<i>T. minutiflora</i>	6/10/2015	Terry Davis
<i>T.,.loleacea</i>	8/10/2015	Terry Davis
<i>T. deppeana</i>	10/10/2015	Greg Aizelwood
<i>T.,.loleacea</i>	10/10/2015	Greg Aizelwood
<i>T. tricolepis</i>	10/10/2015	Greg Aizelwood
<i>T. stimulata</i>	10/10/2015	Greg Aizelwood
<i>T. viridiflora</i> (red leaf form)	17/10/2015	Terry Davis
<i>T. streptophylla</i>	17/10/2015	Greg Aizelwood
<i>T. loleacea</i>	17/10/2015	Greg Aizelwood
<i>T. complanata</i> Baeza Equador	July 2015	Greg Aizelwood

A full Seed Bank List is available on our website bromeliad.org.au

**POSTAGE
PAID
AUSTRALIA**

**PRINT
POST**
PP246537/00007



***If undelivered, return to:
Bromeliad Society of Australia
P.O. BOX 340, 2112
Ryde NSW
BROMELETTER
Print Post Approval
No. PP100001193.***