



Arboretum Mlyňany

Slovak Academy of Sciences

Index Seminum

57/2009



Chimonanthus praecox /L./ Link.

Species from the title page:

Chimonanthus praecox /L./ Link. - Fragrant Wintersweet Tree

Family: *Calycanthaceae*

Synonyms:

Calycanthus praecox - L.

Chimonanthus fragrans - Lindl.

Meratia praecox - (L.) Rehder & E. H. Wilson

Fragrant wintersweet is endemic to China. Its scientific name *Cheimonanthus* comes from two Greek words meaning winter and flower. It is distributed naturally in the west of Hubei and Hunan provinces, in the south of Shanxi province and the east of Sichuan and Guizhou provinces. It has been cultivated in China for more than a thousand years as a garden plant, a pot plant and for its use in cut-flower arranging. In the early Edo period in Japan (1611-1629) it was introduced to Japanese gardens and appeared in Europe in 1766. It was grown first in England and then gradually spread to other European countries.

Wintersweet is a deciduous shrub often grown as an ornamental plant for its spicy scented winter flowers and sprays of it are often used by florists for floral arrangements. The unusual time of flowering and the length of the period when it is in blossom made it one of the most popular ornamental plants in China. It is also widely used in traditional Chinese medicine for the treatment of heatstroke, coughs, scalds and bruises. In recent years attention has been focused on this plant as a new source of natural essential oils which can be used in cosmetics, perfumes and aromatherapy.

The shrub prefers medium exposure to sunlight or shade and likes light, acidic, well drained soils that are not waterlogged in winter. It is hardy in USDA Zone 7. A protected, south-facing wall encourages early spring flowering and it is best positioned where its spicy fragrance can be appreciated on the approach to a dwelling. It flowers from November to March and the pale yellow flowers stained purple at the centre are produced in the leaf axils on 3-4 year old wood. The flowers are androgynous and are pollinated by insects. They emit a powerful sweet fragrance that can be smelt up to 45 metres away. The perfume resembles a cross between a jonquil and a violet and the seeds ripen in May or June.

In Mlyňany Arboretum SAS there are eight flourishing wintersweet shrubs ranging from 2 to 3 metres in height, the oldest being 48 years old. They flower every year beginning around mid- February and the seeds usually develop well. (No. 100 in our seed catalogue).

Address

Arboretum Mlyňany SAS

Vieska nad Žitavou 178

951 52 Slepčany

SLOVAKIA

www.arboretum.sav.sk

Telephone: +421 (0) 376 334 211

Fax: +421 (0) 376 426 931

E-mail: arboretum.mlynany@savba.sk

Director

Peter Hot'ka (peter.hotka@savba.sk)

Seed collectors

Tomáš Bibeň (tomas.biben@savba.sk)

Peter Hot'ka (peter.hotka@savba.sk)

Location:

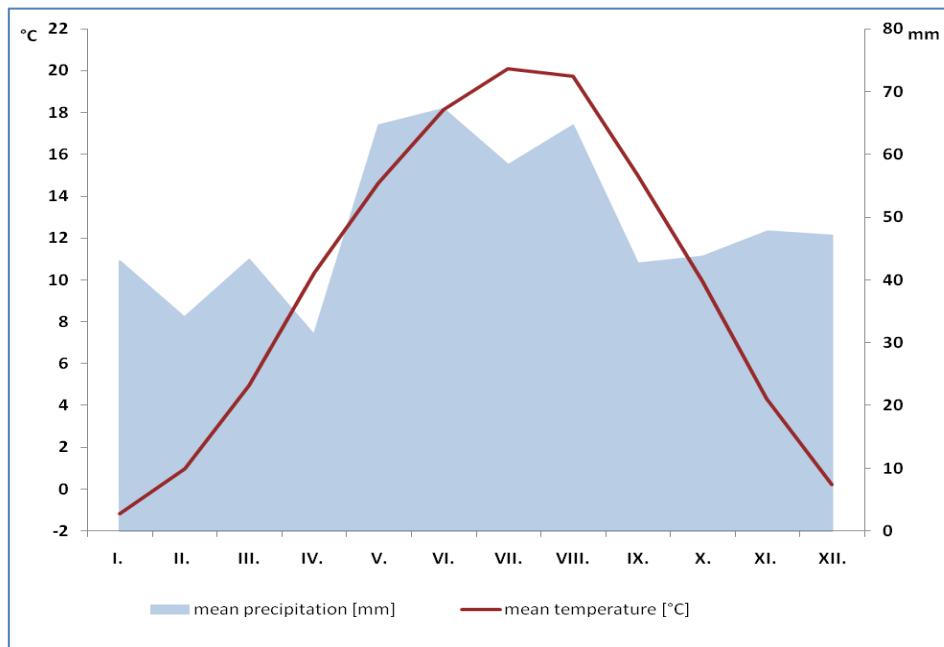
Latitude: 48°19'12'' N

Longitude: 18°22'09'' E

Altitude: 168 – 214 m



Climatic data (1971-2009): Annual mean temperature: **10.6°C**
 Annual mean precipitation: **597.8 mm**

**Climatic data (2009):**Annual mean temperature: **10.9°C**Total annual precipitation: **637 mm**

| 2009 | I. | II. | III. | IV. | V. | VI. | VII. | VIII. | IX. | X. | XI. | XII. |
|--------------------------|------|------|------|------|------|------|------|-------|------|------|------|-------|
| mean temperature [°C] | -2.3 | 0.8 | 5.1 | 14.8 | 16.0 | 17.9 | 21.7 | 21.4 | 17.8 | 9.8 | 6.4 | 1.0 |
| total precipitation [mm] | 41.7 | 42.2 | 67.1 | 6.2 | 48.8 | 57.5 | 48.9 | 59.9 | 17.6 | 87.5 | 55.5 | 104.1 |

In response to the **Convention on Biological Diversity (Rio de Janeiro, 1992)**
Arboretum Mlyňany SAS supplies its seeds offered in this catalogue on the following conditions:

1. the seeds are only used for the public good in areas of scientific research, conservation of species, education and the development of public botanic gardens,
2. any commercial use of the plant material requires the permission of Arboretum Mlyňany SAS and a separate agreement,
3. any publication resulting from the use of the material should acknowledge Arboretum Mlyňany SAS as supplier.

By ordering seeds you agree to comply with the conditions above.



Desiderata 2009, max. 50

| | | | | | | | | | |
|--|--|--|--|--|--|--|--|--|--|
| | | | | | | | | | |
| | | | | | | | | | |
| | | | | | | | | | |
| | | | | | | | | | |
| | | | | | | | | | |

Vaše požiadavky nám prosím zašlite do 30. apríla 2010.
Please return Desiderata before 30 April 2010.
Desiderata senden Sie bitte bis spätestens 30. April 2010 zurück.

Desiderata address to:

**Tomáš Bibeň
Arboretum Mlyňany SAS
Vieska nad Žitavou 178,
951 52 Slepčany,
SLOVAKIA**

or

tomas.biben@savba.sk

Your address:

A. SEEDS COLLECTED IN ARBORETUM MLYŇANY IN 2009

Aceraceae

1. *Acer aidzuense* Franch.
2. *Acer buergerianum* Miq.
3. *Acer davidii* Franch.
4. *Acer ginnala* Maxim.
5. *Acer glabrum* Torr.
6. *Acer griseum* /Franch./ Pax
7. *Acer grosseri* Pax
8. *Acer japonicum* Thunb. 'Aconitifolium'
9. *Acer monspessulanum* L.
10. *Acer opalus* Mill.
11. *Acer opalus* Mill. var. *tomentosum* /Tausch/ Rehd.
12. *Acer palmatum* Thunb.
13. *Acer palmatum* Thunb. 'Dissectum'
14. *Acer palmatum* Thunb. 'Linearilobum'
15. *Acer platanoides* L. 'Lorbergii'
16. *Acer tataricum* L.
17. *Acer tegmentosum* Maxim.
18. *Acer truncatum* Bge.
19. *Acer ukurunduense* Trautv. & Mey

20. *Dipteronia sinensis* Oliv.

Acanthaceae

21. *Hypoestes phyllostachya* Baker

Actinidiaceae

22. *Actinidia arguta* /Sieb. & Zucc./ Planch. ex Miq.

Adoxaceae

23. *Viburnum carlesii* Hemsl.
24. *Viburnum cassinoides* L.
25. *Viburnum dasyanthum* Rehd.
26. *Viburnum lantana* L.
27. *Viburnum opulus* L.
28. *Viburnum opulus* L. var. *xanthocarpum* /Endl./ Rehd.
29. *Viburnum plicatum* Thunb. var. *tomentosum* /Thunb./ Miq.
30. *Viburnum rhytidophyllum* Hemsl.
31. *Viburnum x burkwoodii* Burkwood & Skipw.
32. *Viburnum x juddii* Rehd.

Agavaceae

33. *Hosta undulata* L. H. Bailey

Alangiaceae

34. *Alangium chinense* /Lour./ Harms.

Anacardiaceae

35. *Cotinus obovatus* Raf.

36. *Rhus glabra* L.
37. *Rhus radicans* L.

Apocynaceae

38. *Catharanthus roseus* /L./ G. Don (dark pink flower)
39. *Catharanthus roseus* /L./ G. Don (light pink flower)

Aquifoliaceae

40. *Ilex aquifolium* L.
41. *Ilex aquifolium* L. f. *bacciflora* /Weston/ Rehd.
42. *Ilex aquifolium* L. f. *ferox* /Aiton/ C. K. Schneid.
43. *Ilex aquifolium* L. f. *heterophylla* /Aiton/ Loes.
44. *Ilex aquifolium* L. 'Ovata'
45. *Ilex ciliospinosa* Loes.
46. *Ilex latifolia* Thunb.
47. *Ilex pernyi* Franch.
48. *Ilex verticillata* /L./ A. Gray
49. *Ilex x altaclarensis* /Loud./ Dallim.
50. *Ilex x aquipernyi* Gable ex Whittem.
51. *Ilex x koehneana* Loes.

Araliaceae

52. *Acanthopanax henryi* /Oliv./ Harms
53. *Acanthopanax senticosus* /Rupr. & Maxim./ Harms
54. *Acanthopanax setchuenensis* Harms ex Diels

55. *Kalopanax pictus* /Thunb./ Nakai.

Asteraceae

56. *Dahlia variabilis* /Willd./ Desf.

Berberidaceae

57. *Berberis aggregata* C. K. Schneid.
58. *Berberis brachypoda* Maxim.
59. *Berberis canadensis* Mill.
60. *Berberis candidula* Schneid.
61. *Berberis gagnepainii* Schneid.
62. *Berberis gagnepainii* Schneid. var. *lanceifolia* Ahrendt
63. *Berberis hakeoides* /Hook.f./ C. K. Schneid.
64. *Berberis hookeri* Lem.
65. *Berberis hybrido-gagnepainii* Suring.
66. *Berberis julianae* C. K. Schneid.
67. *Berberis koreana* Palibin. var. *koreana*
68. *Berberis regeliana* var. *rubra* Koehne ex C. K. Schneid.
69. *Berberis soulieana* Schneid.
70. *Berberis thunbergii* DC.
71. *Berberis thunbergii* DC. 'Atropurpurea'
72. *Berberis vulgaris* L.
73. *Berberis x antoniana* Ahrendt
74. *Berberis x interposita* Ahrendt

75. *Berberis x stenophylla* Lindl.

76. *Mahonia aquifolium* /Pursh./ Nutt.

77. *Mahonia aquifolium* /Pursh./ Nutt. 'Apollo'

78. *Mahonia aquifolium* /Pursh./ Nutt. 'Juglandifolia'

79. *Mahonia repens* /Lindl./ G. Don

Betulaceae

80. *Alnus glutinosa* L.

81. *Alnus incana* /L./ Moench 'Aurea'

82. *Betula davurica* Pall.

83. *Betula glandulifera* /Reg./ Butler.

84. *Betula maximowicziana* Reg.

85. *Betula obscura* Kotula

86. *Betula oycoviensis* Besser

87. *Betula pendula* Roth.

88. *Betula pendula* Roth. 'Fastigiata'

89. *Betula pendula* Roth. 'Youngii'

90. *Betula platyphylla* Sukatsch.

91. *Betula pubescens* Ehrh.

92. *Betula utilis* D. Don 'Golden Cloud'

93. *Betula utilis* D. Don var. *jacquemontii* Spach.

94. *Carpinus betulus* L.

Bignoniaceae

95. *Catalpa ovata* G. Don

Buxaceae

96. *Buxus microphylla* Sieb. & Zucc. var. *koreana* Nakai

97. *Buxus sempervirens* L. 'Angustifolia'

98. *Buxus sempervirens* L. 'Bullata'

99. *Sarcococca confusa* Sealy

Calycanthaceae

100. *Chimonanthus praecox* /L./ Link.

101. *Chimonanthus yunnanensis* W. W. Sm.

Cannabaceae

102. *Celtis jessoensis* Koidz.

Cannaceae

103. *Canna indica* L.

Caprifoliaceae

104. *Abelia biflora* Turcz.

105. *Abelia x grandiflora* /André/ Rehd.

106. *Diervilla rivularis* Gattinger

107. *Kolkwitzia amabilis* Graebn.

108. *Lonicera albertii* Regel.

109. *Lonicera alpigena* L.

110. *Lonicera alpigena* L. 'Nana'

111. *Lonicera coerulea* Regel.

112. *Lonicera maackii* /Rupr./ Maxim.

113. *Lonicera nigra* L.

114. *Lonicera periclymenum* L.

115. *Lonicera pileata* Oliv.

116. *Lonicera tatarica* L. var. *xanthocarpa* Endl.

117. *Lonicera x bella* Zabel

Celastraceae

118. *Celastrus angulatus* Maxim.

119. *Euonymus fortunei* /Turcz./ Hand.-Maz. var. *radicans* /Sieb. ex Miq./ Rehd.

120. *Euonymus hamiltonianus* Wall. var. *hians* /Koehne/ Blakel.

121. *Euonymus hamiltonianus* Wall. var. *lanceifolius* /Loes./ Blakel.

122. *Euonymus hamiltonianus* Wall. var. *yedoensis* /Koehne/ Blakel.

123. *Euonymus japonicus* Thunb.

124. *Euonymus latifolius* /L./ Mill.

Cercidiphyllaceae

125. *Cercidiphyllum japonicum* Sieb. & Zucc.

Cistaceae

126. *Cistus laurifolius* L.

Clusiaceae

127. *Hypericum androsaemum* L.

128. *Hypericum x inodorum* Mill.

129. *Hypericum x mooserianum* André

Cornaceae

130. *Cornus baileyi* Coult. & Evans

131. *Cornus controversa* Hemsl.

132. *Cornus coreana* Wagner

133. *Cornus officinalis* Sieb. & Zucc.

134. *Davidia involucreta* Baillon

Cupressaceae

135. *Cryptomeria japonica* /L.f./ D. Don

136. *Cunninghamia lanceolata* /Lamb./ Hook.

137. *Cupressus arizonica* Greene.

138. *Cupressus lusitanica* ssp. *bentharii* /Endl./ Franco

139. *Cupressus sempervirens* L.

140. *Cupressus torulosa* D. Don

- 141. *Chamaecyparis lawsoniana* /Murr./ Parl.
- 142. *Chamaecyparis lawsoniana* /Murr./ Parl. 'Aurea'
- 143. *Chamaecyparis lawsoniana* /Murr./ Parl. 'Erecta Viridis'
- 144. *Chamaecyparis lawsoniana* /Murr./ Parl. 'Globosa'
- 145. *Chamaecyparis lawsoniana* /Murr./ Parl. 'Golden Wonder'
- 146. *Chamaecyparis nootkatensis* /D. Don/ Spach.

- 147. *Juniperus communis* L.
- 148. *Juniperus mongolica* Hort. ex Lavallée
- 149. *Juniperus scopulorum* Sarg. 'Skyrocket'

- 150. *Metasequoia glyptostroboides* Hu & W. C. Cheng

- 151. *Sequoiadendron giganteum* /Lindl./ J. Buchh.

- 152. *Thuja occidentalis* L.
- 153. *Thuja occidentalis* L. 'Spiralis'
- 154. *Thuja plicata* Donn ex D. Don

- 155. *Thujopsis dolabrata* /Thunb. ex L. f./ Sieb. & Zucc.

Ebenaceae

- 156. *Diospyros lotus* L.

Elaeagnaceae

- 157. *Elaeagnus multiflora* Thunb.
- 158. *Elaeagnus umbellata* Thunb.

Ericaceae

- 159. *Enkianthus campanulatus* /Miq./ G.Nicholson 'Albiflorus'
- 160. *Enkianthus cernuus* /Sieb. & Zucc./ Benth. & Hook. f. ex Makino var. *rubens*
- 161. *Enkianthus perulatus* /Miq./ Schneid.

- 162. *Gaylussacia baccata* /Wangenh./ K. Koch

- 163. *Kalmia angustifolia* L. 'Rubra'
- 164. *Kalmia latifolia* L.

- 165. *Ledum glandulosum* Nutt.
- 166. *Ledum palustre* Harmaja

- 167. *Oxydendrum arboreum* /L./ DC.

- 168. *Pernettya mucronata* L.

- 169. *Pieris floribunda* /Pursh/ Benth. & Hook.
- 170. *Pieris japonica* /Thunb./ D. Don

- 171. *Rhododendron caucasicum* Pall.
- 172. *Rhododendron luteum* Sweet
- 173. *Rhododendron micranthum* Turcz.
- 174. *Rhododendron* x *hybridum* 'Eva'
- 175. *Rhododendron* x *hybridum* 'Klondyke'

- 176. *Tripetaleia bracteata* Maxim.

Eucommiaceae

- 177. *Eucommia ulmoides* Oliv.

Euphorbiaceae

- 178. *Andrachne colchica* Fisch. & Mey.

- 179. *Securinega suffruticosa* /Pall./ Rehd.

Fabaceae

- 180. *Albizia julibrissin* Durazz.

- 181. *Amorpha californica* Nutt.
- 182. *Amorpha fruticosa* L.

- 183. *Caragana arborescens* Lam.
- 184. *Caragana arborescens* Lam. 'Pendula'
- 185. *Caragana sibirica* Medik.
- 186. *Caragana tragacanthoides* Poir.

- 187. *Cercis canadensis* L.
- 188. *Cercis chinensis* Bge.
- 189. *Cercis siliquastrum* L.

- 190. *Cladrastis lutea* /F. Michx./ K. Koch.

- 191. *Colutea orientalis* Mill.

- 192. *Coronilla emerus* /L./ Lassen.

- 193. *Cytisus scoparius* /L./ Link.

- 194. *Desmodium canadense* /L./ DC.

- 195. *Gleditsia caspica* Desf.
- 196. *Gleditsia japonica* Miq.
- 197. *Gleditsia japonica* Miq. var. *koraiensis* (Nakai) Nakai
- 198. *Gleditsia triacanthos* L.

- 199. *Indigofera heterantha* Wall. ex Brandis.

- 200. *Laburnum alpinum* /Mill./ Bercht. & J. Presl.
- 201. *Laburnum alpinum* /Mill./ Bercht. & J. Presl. 'Pendulum'
- 202. *Laburnum anagyroides* Medik.
- 203. *Laburnum* x *watereri* /Kirchn./ Dippel 'Vossii'

- 204. *Lespedeza bicolor* Turcz.
- 205. *Lespedeza polystachya* Michx.

- 206. *Maackia amurensis* Rupr. & Maxim.

- 207. *Ononis spinosa* L.

- 208. *Robinia pseudoacacia* L.

209. *Sophora flavescens* Aiton.

210. *Wisteria floribunda* /Wild./ DC

211. *Wisteria sinensis* /Sims./ DC.

Fagaceae

212. *Castanea crenata* Sieb.& Zucc.

213. *Quercus x turneri* Willd. 'Pseudoturneri'

Grossulariaceae

214. *Ribes diacanthum* Pall.

215. *Ribes orientale* Desf.

Hamamelidaceae

216. *Hamamelis japonica* Sieb. & Zucc. var. *flavopurpurascens* /Makino/ Rehd.

217. *Hamamelis mollis* Oliv.

218. *Hamamelis virginiana* L.

Hyacinthaceae

219. *Eucomis bicolor* Baker

Hydrangeaceae

220. *Deutzia x rosea* /Lemoine/ Rehd.

221. *Hydrangea arborescens* L.

222. *Hydrangea sargentiana* Rehd. in Sarg.

223. *Hydrangea serrata* /Thunb./ Ser.

224. *Philadelphus x virginalis* Rehd.

225. *Philadelphus x falconeri* Sarg.

Iridaceae

226. *Iris sibirica* L.

Juglandaceae

227. *Carya cordiformis* /Wangenh./ K. Koch

228. *Pterocarya stenoptera* DC.

229. *Pterocarya x rehderiana* Schneid.

Lamiaceae

230. *Salvia officinalis* L.

231. *Vitex negundo* L.

Lardizalabaceae

232. *Decaisnea fargesii* Franch.

Lauraceae

233. *Benzoin angustifolium* /W. C. Cheng/ Nakai

Loranthaceae

234. *Loranthus europaeus* Jacq.

Magnoliaceae

235. *Liriodendron tulipifera* L.

236. *Magnolia acuminata* L.

237. *Magnolia denudata* Desr.

238. *Magnolia officinalis* Rehd. & Wils. var. *biloba* Law

239. *Magnolia virginiana* L.

240. *Magnolia x soulangeana* Soul. - Bod.

241. *Magnolia x soulangeana* Soul. - Bod. 'Satisfaction'

Malvaceae

242. *Hibiscus syriacus* L. (strihaný list)

243. *Hibiscus syriacus* L.

244. *Tilia oliveri* Szysz.

245. *Tilia platyphyllos* Scop. 'Laciniata'

Moraceae

246. *Ficus carica* L.

247. *Morus alba* L. 'Pendula'

Oleaceae

248. *Fontanesia fortunei* Carr.

249. *Forsythia ovata* Nakai

250. *Fraxinus americana* L.

251. *Jasminum fruticans* L.

252. *Ligustrum amurense* Carr.

253. *Ligustrum compactum* /Wall. ex G. Don/ Thomson ex Brandis

254. *Ligustrum delavayanum* Hariot

255. *Ligustrum obtusifolium* Sieb. & Zucc.

256. *Ligustrum ovalifolium* Hassk. 'Aureum'

257. *Ligustrum sinense* Lour.

258. *Ligustrum tschonoskii* Decne. var. *macrocarpum* /Koehne/ Rehd.

259. *Ligustrum vulgare* L. 'Atrovirens'

260. *Ligustrum vulgare* L. 'Pyramidale'

261. *Ligustrum vulgare* L. 'Xanthocarpum'

262. *Syringa emodi* Wall.

263. *Syringa josikaea* Jacq.

264. *Syringa microphylla* Diels.

265. *Syringa oblata* subsp. *dilatata* /Nakai/ Green & Chang

266. *Syringa reticulata* /Bl./ H. Hara
 267. *Syringa reticulata* /Bl./ H. Hara var. *mandshurica* /Maxim./ H. Hara.
 268. *Syringa villosa* Vahl.
 269. *Syringa wolfii* Schneid.
 270. *Syringa* x *prestoniae* McKelvey

Paeoniaceae

271. *Paeonia peregrina* Mill.

Phyllanthaceae

272. *Andrachne colchica* Fisch. & Mey.

Pinaceae

273. *Cedrus atlantica* Endl./ Manetti
 274. *Larix gmelinii* /Rupr./ Rupr.
 275. *Larix gmelinii* /Rupr./ Rupr. var. *olgensis* /A. Henry/ Ostenf. & Syrach
 276. *Larix kaempferi* /Lamb./ Carr.
 277. *Picea abies* /L./ Karst
 278. *Picea abies* /L./ Karst 'Cupressina'
 279. *Picea glauca* /Moench/ Voss
 280. *Picea omorika* /Pančić/ Purk.
 281. *Pinus armandii* Franch.
 282. *Pinus bungeana* Zucc. ex Endl.
 283. *Pinus flexilis* James
 284. *Pinus nigra* Arnold var. *caramanica* /Loudon/ Rehd.
 285. *Pinus nigra* Arnold. 'Fastigiata'
 286. *Pinus ponderosa* Laws. var. *scopulorum* Engelm.
 287. *Pinus rigida* Mill.
 288. *Pinus strobus* L. 'Contorta'
 289. *Pinus wallichiana* Jacks.
 290. *Pseudotsuga menziesii* /Mirb./ Franco
 291. *Tsuga canadensis* /L./ Carr.

Plantaginaceae

292. *Digitalis lanata* Ehrh.

Poaceae

293. *Pennisetum setaceum* /Forssk./ Chiov. 'Rubrum'

Ranunculaceae

294. *Aquilegia flabella* Sieb.& Zucc.
 295. *Clematis heracleifolia* DC.
 296. *Clematis recta* L.
 297. *Clematis texensis* Buckl.

Rhamnaceae

298. *Frangula alnus* Mill.
 299. *Paliurus spina-christi* Mill.
 300. *Rhamnus davuricus* Pall.
 301. *Rhamnus globosa* Bge.
 302. *Ziziphus jujuba* Mill.

Rosaceae

303. *Amelanchier cusickii* Fern.
 304. *Amelanchier ovalis* Med.
 305. *Aronia arbutifolia* /L./ Pers.
 306. *Aronia melanocarpa* /Michx./ Ell.
 307. *Cotoneaster amoenus* Wils.
 308. *Cotoneaster divaricatus* Rehd. & Wils.
 309. *Cotoneaster frigidus* Wall. ex Lindl.
 310. *Cotoneaster harrismithii* Flinck & Hylmö
 311. *Cotoneaster horizontalis* Decne.
 312. *Cotoneaster microphyllus* Wall. ex Lindl.
 313. *Cotoneaster multiflorus* Bge.
 314. *Cotoneaster niger* /Wahlb./ Fr.
 315. *Cotoneaster wardii* W. W. Sm.
 316. *Crataegus pinnatifida* Bge. var. *major* N. E. Br.
 317. *Crataegus crus-galii* L.
 318. *Crataegus monogyna* Jacq.
 319. *Exochorda giraldii* Hesse
 320. *Exochorda korolkowii* Lav.
 321. *Exochorda racemosa* /Lindl./ Rehd.
 322. *Exochorda* x *macrantha* /Lemoine/ Schneid. 'The Bridge'
 323. *Chaenomeles cathayensis* /Hemsl./ Schneid.
 324. *Chaenomeles japonica* /Thunb./ Lindl. ex Spach.
 325. *Chaenomeles* x *superba* /Frahm/ Rehd.
 326. *Malus baccata* /L./ Borkh.
 327. *Malus baccata* /L./ Borkh. 'Pendula'
 328. *Malus domestica* Borkh.
 329. *Malus* x *hybrida* 'Lady Northcliffe'
 330. *Malus* x *hybrida* 'Makamik'
 331. *Mespilus germanica* L.
 332. *Prinsepia sinensis* /Oliv./ Oliv. ex Bean.
 333. *Prinsepia uniflora* Batalin.
 334. *Prunus armeniaca* L.
 335. *Prunus besseyi* L. H. Bailey
 336. *Prunus cerasifera* Ehrh. 'Atropurpurea'
 337. *Prunus laurocerasus* L.
 338. *Prunus laurocerasus* L. 'Camelliifolia'
 339. *Prunus laurocerasus* L. 'Magnoliifolia'

340. *Prunus laurocerasus* L. 'Schipkaensis'
 341. *Prunus laurocerasus* L. (tree growth)
 342. *Prunus maackii* Rupr.
 343. *Pseudocydonia sinensis* C. K. Schneid.
 344. *Pyracantha coccinea* M. Roem.
 345. *Pyracantha coccinea* M. Roem. 'Soleil d'Or'
 346. *Pyrus calleryana* Decne.
 347. *Pyrus calleryana* /L./ Lindl. var. *dimorphophylla* /Mak./Koidz.
 348. *Pyrus communis* L.
 349. *Pyrus elaeagnifolia* Pall.
 350. *Pyrus ussuriensis* Maxim. var. *ovoidea* /Rehd./ Rehd.

351. *Rhodotypos scandens* /Thunb./ Makino

352. *Rosa anemoneflora* L.
 353. *Rosa blanda* Aiton.
 354. *Rosa dumalis* Bechst.
 355. *Rosa dumetorum* Thuill.
 356. *Rosa eglanteria* L.
 357. *Rosa elliptica* Tausch
 358. *Rosa jundzillii* L.
 359. *Rosa moschata* Herrm.
 360. *Rosa moyesii* Hemsl. & Wils.
 361. *Rosa obtusifolia* Leman.
 362. *Rosa pimpinellifolia* L.
 363. *Rosa rugosa* Thunb.
 364. *Rosa rugosa* Thunb.
 365. *Rosa sericea* Lindl. f. *pteracantha* Franch.
 366. *Rosa tuschetica* Boiss.
 367. *Rosa virginiana* Herrm.
 368. *Rosa x hybrida* 'Barock'
 369. *Rosa x hybrida* 'Puerta del Sol'
 370. *Rosa x hybrida* 'Queen Elizabeth'

371. *Sorbaria tomentosa* /Lindl./ Rehd.

372. *Sorbus aucuparia* L. var. *australis*

373. *Spiraea blumei* G. Don
 374. *Spiraea japonica* L.f.
 375. *Spiraea thunbergii* Sieb. ex Bl.

376. *Stranvaesia davidiana* Decne.
 377. *Stranvaesia davidiana* Decne. var. *lutea* Donard
 378. *Stranvaesia davidiana* Decne. 'Maculata'

Ruscaceae

379. *Ruscus aculeatus* L.

Rutaceae

380. *Dictamnus albus* L.

381. *Evodia daniellii* /Benn./ Hemsl.
 382. *Phellodendron sachalinense* /F. Schmidt/ Sarg.

383. *Poncirus trifoliata* /L./ Raf.

384. *Ptelea baldwinii* Torr. & A. Gray.

385. *Ptelea trifoliata* L.

386. *Ruta graveolens* L.

387. *Skimmia japonica* Thunb.

388. *Skimmia japonica* Thunb. 'Rubella'

389. *Skimmia reevesiana* /Fort./ Fort.

390. *Zanthoxylum simulans* Hance.

391. *Zanthoxylum alatum* var. *planispinum* /Sieb. & Zucc./ Rehd. & Wils.

Sapindaceae

392. *Aesculus flava* Aiton

393. *Xanthoceras sorbifolium* Bge.

Simaroubaceae

394. *Ailanthus altissima* /Mill./ Swingle

Solanaceae

395. *Capsicum annuum* L. 'Alma'

396. *Capsicum chinense* Jacq. 'Bishops Crown'

397. *Lycium chinense* Mill.

398. *Physalis alkekengi* L.

399. *Physalis mollis* Nutt. var. *mollis*

Stachyuraceae

400. *Stachyurus praecox* Sieb. & Zucc.

Staphyleaceae

401. *Staphylea colchica* Stev.

402. *Staphylea pinnata* L.

Styracaceae

403. *Halesia carolina* L.

404. *Halesia tetraptera* Ellis var. *monticola* /Rehd./ Reveal & Seldin

405. *Styrax japonica* Sieb. & Zucc.

Taxaceae

406. *Taxus cuspidata* Sieb. & Zucc.

Thymelaeaceae

407. *Daphne laureola* L.

Ulmaceae

408. *Ulmus parvifolia* Jacq.

Verbenaceae

409. *Callicarpa bodinierii* H. Léveillé var. *giraldii* Rehd.

410. *Callicarpa dichotoma* /Lour./ K. Koch 'Albifructus'

411. *Callicarpa* x *shirasawana* Mak.

412. *Clerodendrum trichotomum* Thunb.

Vitaceae

413. *Ampelopsis brevipedunculata* /Maxim./ Trautv.

414. *Parthenocissus tricuspidata* /Sieb. & Zucc./ Planch.

415. *Vitis riparia* Michx.

B. SEEDS COLLECTED IN ARBORETUM MLYŇANY IN 2008

Aceraceae

- 416. *Acer aidzuense* Nakai
- 417. *Acer cappadocicum* Gleditch
- 418. *Acer cappadocicum* var. *indicum* /Pax/ Rehd.
- 419. *Acer carpinifolium* Sieb. & Zucc.
- 420. *Acer divergens* Pax.
- 421. *Acer ginnala* Maxim.
- 422. *Acer griseum* /Franch./ Pax.
- 423. *Acer mono* Maxim.
- 424. *Acer miyabei* Maxim.
- 425. *Acer nikoense* Maxim.
- 426. *Acer opalus* ssp. *opalus* Mill.
- 427. *Acer semenowii* Reg. & Herd.
- 428. *Acer tschonoskii* var. *brevipes* Komar.
- 429. *Acer ukurunduense* Trautv. & Mey

- 430. *Dipteronia sinensis* Oliv.

Actinidiaceae

- 431. *Actinidia kolomikta* /Maxim. & Rupr./ Maxim.

Adoxaceae

- 432. *Sambucus racemosa* L.

- 433. *Viburnum burejaeticum* Reg. & Herd.
- 434. *Viburnum cassinoides* L.

- 435. *Viburnum dasyanthum* Rehd.
- 436. *Viburnum dilatatum* Thunb.
- 437. *Viburnum farreri* Stearn.

Alangiaceae

- 438. *Alangium chinense* /Lour./ Harms.

Anacardiaceae

- 439. *Rhus potaninii* Sieb. & Zucc.

Araliaceae

- 440. *Acanthopanax henryi* /Oliv./ Harms
- 441. *Acanthopanax setchuenensis* Harms.

Berberidaceae

- 442. *Berberis amurensis* Rupr.
- 443. *Berberis koreana* Palibin

- 444. *Mahonia beallei* /Fort./ Carr.

Betulaceae

- 445. *Betula alleghaniensis* Britt.
- 446. *Betula chinensis* Maxim.
- 447. *Betula utilis* D. Don var. *jacquemontii* Spach
- 448. *Betula maximowicziana* Reg.
- 449. *Betula pubescens* Ehrh.
- 450. *Betula pumila* L. var. *glandulifera* Reg.
- 451. *Betula raddeana* Trautv.

- 452. *Carpinus caucasica* Grossh
- 453. *Carpinus cordata* Bl.
- 454. *Carpinus orientalis* Mill.

- 455. *Ostrya carpinifolia* Scop.
- 456. *Ostrya japonica* Sarg.
- 457. *Ostrya virginiana* /Mill./ K.Koch

Calycanthaceae

- 458. *Chimonanthus praecox* /L./ Link.

Caprifoliaceae

- 459. *Kolkwitzia amabilis* Graebn.

- 460. *Lonicera alpigena* L.
- 461. *Lonicera coerulea* var. *altaica* /Pall./ Sweet
- 462. *Lonicera coerulea* var. *edulis* Reg.
- 463. *Lonicera fragrantissima* Lindl. & Paxt.
- 464. *Lonicera chrysantha* Turcz.
- 465. *Lonicera iberica* Bieb.
- 466. *Lonicera nigra* L.
- 467. *Lonicera orientalis* Lam.
- 468. *Lonicera ruprechtiana* Reg.
- 469. *Lonicera tatarica* L.
- 470. *Lonicera tatarica* L. 'Lutea'
- 471. *Lonicera tenuipes* Nakai

Celastraceae

- 472. *Celastrus orbiculatus* Thunb.
- 473. *Celastrus angulatus* Maxim.

- 474. *Euonymus bungeanus* Maxim.
- 475. *Euonymus hamiltonianus* var. *lanceifolius* /Loes./ Blakel.
- 476. *Euonymus latifolius* /L./ Mill.
- 477. *Euonymus sieboldianus* /Bl./ Hara.

Cercidiphyllaceae

- 478. *Cercidiphyllum japonicum* Sieb. & Zucc.

Cistaceae

479. *Cistus laurifolius* L.

Cornaceae

480. *Cornus amomum* L.
481. *Cornus australis* C. A. Mey.
482. *Cornus coreana* Wanger.
483. *Cornus kousa* /Buerg./ Hance

Elaeagnaceae

484. *Elaeagnus multiflora* Thunb.
485. *Elaeagnus umbellata* Thunb.

Ericaceae

486. *Kalmia angustifolia* L.
487. *Ledum palustre* L.
488. *Pieris floribunda* /Pursh/ Benth. & Hook.
489. *Pieris japonica* /Thunb./ D. Don
490. *Tripetaleia bracteata* Maxim.

Fabaceae

491. *Colutea orientalis* Mill.

Hydrangeaceae

492. *Hydrangea paniculata* Sieb.
493. *Hydrangea sargentiana* Rehd.
494. *Philadelphus brachybotrys* /Koehne/ Koehne
495. *Philadelphus delavayi* L.
496. *Philadelphus floridus* Beadle
497. *Philadelphus incanus* Koehne
498. *Philadelphus lewisii* Pursh
499. *Philadelphus pekinensis* Rupr.
500. *Philadelphus pubescens* Loisel.
501. *Philadelphus satsumi* Sieb. ex Lindl. & Paxt.
502. *Philadelphus satsumi* Sieb. ex Lindl. & Paxt. var. *nikoensis* Rehd.
503. *Philadelphus sericanthus* Koehne
504. *Philadelphus schrenkii* Rupr.
505. *Philadelphus subcanus* Koehne
506. *Philadelphus tenuifolius* Rupr. & Maxim.
507. *Philadelphus tomentosus* Royle
508. *Philadelphus x falconeri* Sarg.
509. *Philadelphus x lemoinei* Lemoine
510. *Philadelphus x splendens* Rehd.
511. *Schizophragma hydrangoides* Sieb. & Zucc.

Lardizabalaceae

512. *Decaisnea fargesii* Franch.

Magnoliaceae

513. *Magnolia kobus* DC.

Malvaceae

514. *Tilia insularis* Nakai

Moraceae

515. *Broussonetia papyrifera* /L./ L'Hér.

Oleaceae

516. *Fontanesia phillyraeoides* Labill. ssp. *fortunei* /Carr./ Yalt.
517. *Forsythia ovata* Nakai.
518. *Fraxinus oxycarpa* Willd.
519. *Jasminum fruticans* L.
520. *Ligustrum compactum* /Wall. ex G. Don/ Thomson ex Brandis
521. *Ligustrum quihoui* Carr.
522. *Ligustrum sinense* Lour.
523. *Osmanthus decorus* /Boiss. & Balansa./ Kasapliligil.
524. *Syringa julianae* Schneid.
525. *Syringa oblata* Lindl.
526. *Syringa oblata* Lindl. 'Alba'
527. *Syringa reticulata* /Blum/ Hara
528. *Syringa villosa* Vahl.
529. *Syringa wolfii* Schneid.
530. *Syringa yunnanensis* Franch.

Pinaceae

531. *Abies koreana* Wils.
532. *Pinus rigida* Mill.
533. *Pinus sylvestris* L.

Rhamnaceae

534. *Rhamnus japonica* Maxim.

Rosaceae

535. *Cotoneaster acutifolius* Turcz.
536. *Cotoneaster foveolatus* Rehd. & Wils.
537. *Cotoneaster frigidus* Wall. ex Lindl.
538. *Cotoneaster lucidus* Schlecht.
539. *Cotoneaster multiflorus* Bge.
540. *Cotoneaster niger* /Thunb./ Fries.

- 541. *Cotoneaster nitens* Rehd. & Wils.
- 542. *Cotoneaster obscurus* Rehd. & Wils.
- 543. *Cotoneaster pannosus* Franch.
- 544. *Cotoneaster racemiflorus* /Desf./ K.Koch
- 545. *Cotoneaster salicifolius* Franch.

- 546. *Crataegus flabellata* /Bosc/ K. Koch
- 547. *Crataegus chlorosarca* Maxim.
- 548. *Crataegus intricata* Lge.
- 549. *Crataegus pedicellata* Sarg.
- 550. *Crataegus pinnatifida* var. *major* N. E. Br.
- 551. *Crataegus sanguinea* Pall.
- 552. *Crataegus succulenta* Link.
- 553. *Crataegus* x *lavalleyi* Herinq. ex Lav.

- 554. *Holodiscus discolor* /Pursh/ Maxim.

- 555. *Chaenomeles cathayensis* /Hemsl./Schneid.

- 556. *Malus baccata* /L./ Borkh.
- 557. *Malus coronaria* /L./ Mill.
- 558. *Malus prunifolia* /Willd./ Borkh.
- 559. *Malus sargentii* Rehd.
- 560. *Malus toringoides* /Rehd./ Hugh.
- 561. *Malus* x *zumi* /Matsum./ Rehd.
- 562. *Malus* x *zumi* var. *calocarpa* Rehd. 'Golden Hornet'
- 563. *Prinsepia sinensis* /Oliv./ Oliv.
- 564. *Prinsepia uniflora* Batal.

- 565. *Prunus asiatica* Kom.
- 566. *Prunus japonica* Thunb.
- 567. *Prunus maackii* Rupr.
- 568. *Prunus racemosa* Lam.
- 569. *Prunus tomentosa* Thunb.
- 570. *Prunus virginiana* /L./ P. Mill.

- 571. *Pyrus betulifolia* Bge.

- 572. *Rosa davidii* var. *elongata* Rehd. & Wils.
- 573. *Rosa pimpinellifolia* L.
- 574. *Rosa* x *damascena* Mill.
- 575. *Rosa* x *rugotida* Belder & Wijnands.

- 576. *Rubus illecebrosus* Focke.

- 577. *Sorbus decora* /Sarg./ Schneid.
- 578. *Sorbus hybrida* L.
- 579. *Sorbus intermedia* /Ehrh./ Pers.
- 580. *Sorbus mougeotii* Soy-Willem. & Godr.
- 581. *Sorbus* x *thuringiaca* /Ilse/ Fritsch.

Ruscaceae

- 582. *Ruscus hypoglossum* L.

Rutaceae

- 583. *Orixa japonica* Thunb.

- 584. *Poncirus trifoliata* /L./ Raf.

- 585. *Zanthoxylum americanum* Mill.
- 586. *Zanthoxylum schinifolium* Sieb. & Zucc.
- 587. *Zanthoxylum simulans* Hance

Styracaceae

- 588. *Halesia carolina* L.
- 589. *Styrax japonica* Sieb. & Zucc.

Symplocaceae

- 590. *Symplocos paniculata* /Thunb./ Miq.

Verbenaceae

- 591. *Callicarpa dichotoma* /Lour./ K. Koch
- 592. *Callicarpa* x *shirasawana* Mak.
- 593. *Clerodendron trichotomum* Thunb.

Vitaceae

- 594. *Ampelopsis brevipedunculata* /Maxim./ Trautv.
- 595. *Vitis amurensis* Rupr.

C. SEEDS COLLECTED IN OTHER LOCALITIES IN 2009

| Aceraceae | Locality | Aquifoliaceae | Locality |
|---|-----------------|--|-----------------|
| 596. <i>Acer buergerianum</i> Miq. | Nitra | 629. <i>Ilex cornuta</i> Lindl.& Paxton. | Bratislava |
| 597. <i>Acer circinatum</i> Pursh | Bratislava | | |
| 598. <i>Acer cissifolium</i> Sieb. & Zucc. | Nitra | Araliaceae | |
| 599. <i>Acer monspessulanum</i> L. | Nitra | 630. <i>Aralia elata</i> Seem. 'Variegata' | Bratislava |
| 600. <i>Acer opalus</i> Mill. | Nitra | 631. <i>Acanthopanax henryi</i> /Oliv./ Harms | Bratislava |
| 601. <i>Acer pseudoplatanus</i> L. | Nitra | | |
| 602. <i>Acer pseudoplatanus</i> L. 'Atropurpurea' | Nitra | Aristolochiaceae | |
| 603. <i>Acer pseudoplatanus</i> L. 'Leopoldii' | Nitra | 632. <i>Aristolochia macrophylla</i> Lam. | Bratislava |
| 604. <i>Acer pseudoplatanus</i> L. 'Rubrum' | Nitra | | |
| 605. <i>Acer tataricum</i> L. | | | |
| | | Asteraceae | |
| Adoxaceae | | 632. <i>Artemisia absinthium</i> L. | Lukáčov Štál |
| 606. <i>Sambucus ebulus</i> L. | Abramová | 634. <i>Artemisia glacialis</i> L. var. <i>nitida</i> | Nitra |
| 607. <i>Sambucus nigra</i> L. 'Variegata' | Nitra | | |
| 608. <i>Sambucus racemosa</i> L. | Podbanské | 635. <i>Carlina acaulis</i> L. | Lukáčov Štál |
| | | 636. <i>Chrysanthemum frutescens</i> L. | Janíkovce |
| 609. <i>Viburnum burejaeticum</i> Reg. & Herder | Bratislava | 637. <i>Coreopsis grandiflora</i> Hogg ex Sweet | Nitra |
| 610. <i>Viburnum hupehense</i> Rehd. | Bratislava | 638. <i>Echinops sphaerocephalus</i> L. | Nitra |
| 611. <i>Viburnum opulus</i> L. | Betliar | 639. <i>Gaillardia aristata</i> Pursh | Nitra |
| 612. <i>Viburnum opulus</i> L. | Abramová | 640. <i>Santolina pinnata</i> /Jordan. & Fourr./ Guinea. | Nitra |
| 613. <i>Viburnum opulus</i> L. | Kľak | 641. <i>Santolina virens</i> Mill. | Nitra |
| 614. <i>Viburnum phlebotrichum</i> Sieb.& Zucc. | Bratislava | | |
| 615. <i>Viburnum sargentii</i> Koehne | Bratislava | Balsaminaceae | |
| 616. <i>Viburnum tinus</i> L. | Bratislava | 642. <i>Impatiens balsamina</i> L. (dark red flower) | Nitra |
| 617. <i>Viburnum wilsonii</i> Rehd. | Bratislava | 643. <i>Impatiens balsamina</i> L. | Nitra |
| | | 644. <i>Impatiens glandulifera</i> Royle. | Malá Lehota |
| Alangiaceae | | 645. <i>Impatiens glandulifera</i> Royle. | Szombathely |
| 618. <i>Alangium chinense</i> /Lour./ Harms subsp. <i>pauciflorum</i> W. P. Fang. | Bratislava | | |
| | | Berberidaceae | |
| Anacardiaceae | | 646. <i>Berberis thunbergii</i> DC. | Zvolen |
| 619. <i>Cotinus coggygria</i> Scop. | Bošany | 647. <i>Berberis vulgaris</i> L. | Zvolen |
| 620. <i>Cotinus coggygria</i> Scop. | Zvolen | | |
| 621. <i>Cotinus coggygria</i> Scop. 'Purpureus' | Nitra | 648. <i>Nandina domestica</i> Thunb. | Košice |
| 622. <i>Cotinus coggygria</i> Scop. 'Purpureus' | Zvolen | 650. <i>Nandina domestica</i> Thunb. | Janíkovce |
| | | 651. <i>Mahonia beallii</i> /Fort./ Carr. | Nitra |
| 623. <i>Rhus aromatica</i> Aiton. | Nitra | | |
| 624. <i>Rhus verniciflua</i> Stokes. | Nitra | Betulaceae | |
| | | 652. <i>Alnus cordata</i> Desf. | Nitra |
| Apocynaceae | | 653. <i>Betula nana</i> L. | Zvolen |
| 625. <i>Asclepias syriaca</i> L. | Nitra | 654. <i>Betula neoalaskana</i> Sarg. | Bratislava |
| 626. <i>Amsonia tabernaemontana</i> Walter | Nitra | | |
| 627. <i>Catharanthus roseus</i> /L./ G.Don (dark pink flower) | Nitra | | |
| 628. <i>Catharanthus roseus</i> /L./ G.Don (light pink flower) | Nitra | | |

| | | | |
|---|----------------|--|----------------|
| 655. <i>Betula pendula</i> Roth. 'Bibo' | Nitra | 683. <i>Helianthemum nummularium</i> /L./ Mill. (orange flower) | Nitra |
| 656. <i>Betula pendula</i> Roth. 'Gracilis' | Bratislava | | |
| 657. <i>Betula pendula</i> Roth. var. <i>oycoviensis</i> /Bess./ Dipp. | Zvolen | Clusiaceae | |
| 658. <i>Betula pumila</i> L. | Zvolen | 684. <i>Hypericum azoricum</i> L. | Bratislava |
| 659. <i>Carpinus betulus</i> L. | Nitra | 685. <i>Hypericum hookerianum</i> Wight & Arn. | Bratislava |
| 660. <i>Carpinus betulus</i> L. 'Quercifolia' | Nitra | 686. <i>Hypericum patulum</i> Thunb. 'Hidcote' | Bratislava |
| 661. <i>Corylus colurna</i> L. | Zvolen | Convolvulaceae | |
| 662. <i>Ostrya carpinifolia</i> Scop. | Nitra | 687. <i>Ipomoea purpurea</i> /L./ Roth. | Janíkovec |
| Bignoniaceae | | Coriariaceae | |
| 663. <i>Catalpa ovata</i> G. Don | Klátová N. Ves | 688. <i>Coriaria myrtifolia</i> L. | Bratislava |
| 664. <i>Catalpa speciosa</i> Warder ex Engelm. | Klátová N. Ves | Cornaceae | |
| Brassicaceae | | 689. <i>Cornus florida</i> L. | Bratislava |
| 665. <i>Matthiola incana</i> /L./ R. Br. | Nitra | 690. <i>Cornus sanguinea</i> L. | Betliar |
| Campanulaceae | | Cucurbitaceae | |
| 666. <i>Platycodon grandiflorus</i> /Jacq./ DC. 'Duplex' | Nitra | 691. <i>Bryonia dioica</i> Jacq. | Nitra |
| Cannaceae | | 692. <i>Cucumis metuliferus</i> E. Mey. ex Naud. | Nitra |
| 667. <i>Canna edulis</i> Ker-Gawl. | Nitra | 693. <i>Cucumis myriocarpus</i> E. Mey. ex Naud. | Nitra |
| 668. <i>Canna indica</i> L. | Nitra | 694. <i>Cyclanthera brachystachya</i> /Ser./ Cogn. | Nitra |
| Caprifoliaceae | | 695. <i>Cyclanthera pedata</i> /L./ Schrad. | Nitra |
| 669. <i>Leycesteria formosa</i> Wall. | Bratislava | 696. <i>Diplocyclos palmatus</i> /L./ C. Jeffrey | Nitra |
| 670. <i>Lonicera henryi</i> Hemsl. | Nitra | 697. <i>Momordica balsamina</i> L. | Nitra |
| 671. <i>Lonicera quinquelocularis</i> Hardw. | Bratislava | 698. <i>Momordica charantia</i> Descourt. | Nitra |
| 672. <i>Lonicera sempervirens</i> L. | Bratislava | 699. <i>Trichosanthes cucumerina anguina</i> - /L./ Haines. | Nitra |
| Celastraceae | | Cupressaceae | |
| 673. <i>Euonymus europaeus</i> L. | Pezinok | 700. <i>Cupressus arizonica</i> Greene. | Nitra |
| 674. <i>Euonymus europaeus</i> L. | Viničné | 701. <i>Cupressus arizonica</i> Greene. 'Blue Ice' | Nitra |
| 675. <i>Euonymus europaeus</i> L. | Obyce | 702. <i>Cupressus goveniana</i> Gordon | Bratislava |
| 676. <i>Euonymus verrucosus</i> Scop. | J. Kostol'any | 703. <i>Cupressus sempervirens</i> L. | Bratislava |
| 677. <i>Euonymus verrucosus</i> Scop. | Viničné | 704. <i>Cupressus sempervirens</i> L. 'Stricta' | Bratislava |
| 705. <i>Cupressus torulosa</i> D. Don | | | Bratislava |
| Cephalotaxaceae | | 706. <i>Chamaecyparis lawsoniana</i> /Murr./ Parl. | Nitra |
| 678. <i>Cephalotaxus harringtonia</i> K. Koch | Bratislava | 707. <i>Chamaecyparis lawsoniana</i> /Murr./ Parl. 'Imbricata Pendula' | Bratislava |
| 679. <i>Cephalotaxus harringtonia</i> var. <i>drupacea</i> /Sieb. & Zucc./ Koidz. | Bratislava | 708. <i>Chamaecyparis nootkatensis</i> /D. Don/ Spach. | Nitra |
| 709. <i>Thuja orientalis</i> L. | | | Dolná Strehová |
| Cistaceae | | 710. <i>Thuja orientalis</i> L. 'Pyramidalis' | Dolná Strehová |
| 680. <i>Cistus albanicus</i> E.F.Warb. ex Heywood | Bratislava | | |
| 681. <i>Cistus laurifolius</i> L. | Szombathely | | |
| 682. <i>Helianthemum nummularium</i> /L./ Mill. (pink flower) | Nitra | | |

| | | | |
|--|-------------|---|----------------|
| 711. Thuja plicata Donn ex D. Don 'Zebrina' | Nitra | 735. Petteria ramentacea /Sieber/ C. Presl | Bratislava |
| | | 736. Petteria ramentacea /Sieber/ C. Presl | Nitra |
| Ebenaceae | | | |
| 712. Diospyros kaki Thunb. | Nitra | 737. Robinia hispida L. | Nitra |
| | | 738. Robinia pseudoacacia L. | Nitra |
| | | 739. Robinia pseudoacacia L. | Maňa |
| | | 740. Robinia pseudoacacia L. | Komjatice |
| | | 741. Robinia pseudoacacia L. | Sládkovičovo |
| | | 742. Robinia pseudoacacia L. 'Columnaris' | Zvolen |
| | | 743. Robinia pseudoacacia L. 'Fastigiata' | Zvolen |
| 713. Elaeagnus angustifolia L. | Bošany | 744. Sarothamnus scoparius /L./ K. Koch. | Bratislava |
| 714. Hippophae rhamnoides L. | Nitra | | |
| Ephedraceae | | | |
| 715. Ephedra nevadensis S. Wats. | Nitra | | |
| 716. Ephedra funerea Coville & C. V. Morton | Nitra | | |
| Ericaceae | | | |
| 717. Arctostaphylos uva-ursi /L./ Spreng. | Zvolen | | |
| 718. Pieris floribunda /Pursh/ Benth. & Hook. | Szombathely | | |
| Euphorbiaceae | | | |
| 719. Ricinus communis L. | Nitra | | |
| 720. Ricinus communis L. var. Zanzibarensis | Nitra | | |
| Fabaceae | | | |
| 720. Acuan illinoense /Michx./ Kuntze | Bratislava | | |
| 721. Caragana aurantiaca Koehne | Dobrá Niva | | |
| 722. Colutea arborescens L. | Nitra | | |
| 723. Colutea orientalis Mill. | Nitra | | |
| 724. Cytisus nigricans L. | Košice | | |
| 725. Cytisus villosus Pourr. var. undulatus | Bratislava | | |
| 726. Genista tinctoria L. | Prešov | | |
| 727. Genista tinctoria L. | Pezinok | | |
| 728. Gleditsia triacanthos L. | Zvolen | | |
| 729. Gleditsia triacanthos L. | Komjatice | | |
| 730. Halimodendron halodendron /Pall./ Voss. | Bratislava | | |
| 731. Hippocrepis emerus /L./ Lassen ssp. emeroides /Boiss. & Spruner/ Greuter & Burdet ex Lassen | Nitra | | |
| 732. Laburnum anagyroides Medik. | Limbach | | |
| 733. Pithecellobium albicaule Britt. & Rose. | Bratislava | | |
| 734. Pithecellobium albicaule Britt. & Rose. | Nitra | | |
| | | Fagaceae | |
| | | 745. Quercus pubescens Willd. | Bojnice |
| | | Geraniaceae | |
| | | 746. Geranium pratense R. Knuth | Dolná Strehová |
| | | Ginkgoaceae | |
| | | 747. Ginkgo biloba L. | Nitra |
| | | 748. Ginkgo biloba L. | N. V./Žitavou |
| | | Hamamelidaceae | |
| | | 749. Corylopsis pauciflora Sieb. & Zucc. | Bratislava |
| | | 750. Corylopsis wilmottiae Rehd. & Wils | Bratislava |
| | | 751. Hamamelis japonica Sieb. & Zucc. | Bratislava |
| | | 752. Sinowilsonia henryi Hemsley | Bratislava |
| | | Hyacinthaceae | |
| | | 753. Galtonia candicans Decne. | Nitra |
| | | Iridaceae | |
| | | 754. Iris foetidissima L. | Bratislava |
| | | 755. Iris pseudoacorus L. | Nitra |
| | | Juncaceae | |
| | | 756. Luzula sylvatica /Huds./ Gaudin | Živánska Veža |
| | | Lauraceae | |
| | | 758. Umbellularia californica /Hook. & Arn./ Nutt. | Nitra |
| | | 759. Umbellularia californica /Hook. & Arn./ Nutt. | Košice |
| | | Magnoliaceae | |
| | | 760. Magnolia stellata /Sieb. & Zucc./ Maxim. | Nitra |
| | | 761. Magnolia kobus DC. | Bojnice |

| | | | |
|---|----------------|--|-------------|
| 762. <i>Magnolia kobus</i> DC. | Bratislava | 798. <i>Paeonia mascula</i> Miller ssp. <i>mascula</i> Stearn & Davis | Nitra |
| 763. <i>Magnolia salicifolia</i> Maxim. | Bratislava | 799. <i>Paeonia mascula</i> Miller ssp. <i>russii</i> /Biv./ | Nitra |
| 764. <i>Magnolia sieboldii</i> K. Koch. | Bratislava | 800. <i>Paeonia mlokosewitchii</i> Lomakin | Nitra |
| 765. <i>Magnolia stellata</i> /Sieb. & Zucc./ Maxim. | Bratislava | 801. <i>Paeonia mollis</i> Anderson | Nitra |
| 766. <i>Magnolia x soulangiana</i> Soul.- Bod. | Bošany | 802. <i>Paeonia officinalis</i> L. ssp. <i>banatica</i> /Rochel/ Soó | Nitra |
| Malvaceae | | 803. <i>Paeonia officinalis</i> L. ssp. <i>microcarpa</i> /Boiss. & Reut./ Nyman | Nitra |
| 767. <i>Abelmoschus esculentus</i> /L./ Moench | Nitra | 804. <i>Paeonia peregrina</i> Mill. var. <i>romanica</i> /Brandza/ Nyárádi | Nitra |
| 768. <i>Abelmoschus moschatus</i> Medik. | Bratislava | 805. <i>Paeonia rockii</i> /S. G. Haw & L. A. Lauener/ T. Hong et J. J. Li | Nitra |
| 769. <i>Abelmoschus moschatus</i> Medik. | Nitra | 806. <i>Paeonia suffruticosa</i> Andrews. | Nitra |
| 770. <i>Abelmoschus moschatus</i> Medik. (red flower) | Janíkovce | Pinaceae | |
| 771. <i>Abelmoschus moschatus</i> Medik. 'Albus' | Čechynce | 807. <i>Picea abies</i> /L./ Karst | Kľak |
| 772. <i>Abelmoschus moschatus</i> Medik. 'Bordó' | Čechynce | 808. <i>Picea abies</i> /L./ Karst 'Acrocona Nana' | Zvolen |
| 773. <i>Sida rhombifolia</i> L. | Bratislava | 809. <i>Picea abies</i> /L./ Karst 'Harrach' | Zvolen |
| Myrsinaceae | | 810. <i>Picea abies</i> /L./ Karst 'Inversa' | Zvolen |
| 775. <i>Ardisia crenata</i> Sims. | Janíkovce | 811. <i>Picea abies</i> /L./ Karst 'Repens' | Zvolen |
| Myrtaceae | | 812. <i>Picea abies</i> /L./ Karst 'Virgata' | Zvolen |
| 776. <i>Psidium cattleianum</i> Sabine. | Nitra | 813. <i>Picea pungens</i> Engelm. 'Glauca' | Janíkovce |
| Oleaceae | | 814. <i>Picea glauca</i> /Moench/ Voss | Nitra |
| 777. <i>Fraxinus excelsior</i> L. 'Jaspidea' | Nitra | 815. <i>Pinus nigra</i> Arnold var. <i>caramanica</i> /Loud./ Rehd. | Nitra |
| 778. <i>Fraxinus ornus</i> L. | Zvolen | 816. <i>Pseudotsuga menziesii</i> /Mirb./ Franko. | Lefantovce |
| 779. <i>Jasminum beesianum</i> Forrest & Diels | Bratislava | Plantaginaceae | |
| 780. <i>Ligustrum vulgare</i> L. | Abramová | 817. <i>Penstemon glaber</i> Pursh | Nitra |
| 781. <i>Ligustrum vulgare</i> L. 'Pyramidale' | Zvolen | 818. <i>Penstemon laevigatus</i> Aiton | Nitra |
| 782. <i>Phillyrea latifolia</i> L. | Nitra | 819. <i>Penstemon pinifolius</i> Greene | Nitra |
| 783. <i>Syringa amurensis</i> Rupr. | Betliar | Ranunculaceae | |
| 784. <i>Syringa josikaea</i> Jacq. ex Rchb. | Bratislava | 820. <i>Clematis integrifolia</i> L. | Modrý Kameň |
| 785. <i>Syringa josikaea</i> Jacq. ex Rchb. | Nitra | 821. <i>Clematis integrifolia</i> L. | Nitra |
| 786. <i>Syringa sweginzowii</i> Koehne & Lingelsheim | Bratislava | 822. <i>Clematis mandshurica</i> Rupr. | Nitra |
| 787. <i>Syringa vulgaris</i> L. | Klátová N. Ves | 823. <i>Clematis tangutica</i> /Maxim./ Korsh. | Nitra |
| 788. <i>Syringa vulgaris</i> L. | Klátová N. Ves | 824. <i>Nigella damascena</i> L. | Nitra |
| 789. <i>Syringa vulgaris</i> L. | Bošany | Rhamnaceae | |
| 790. <i>Syringa vulgaris</i> L. | Nitra | 825. <i>Rhamnus frangula</i> L. | Nitra |
| 791. <i>Syringa vulgaris</i> L. | Nová Baňa | Rosaceae | |
| 792. <i>Syringa vulgaris</i> L. | Lefantovce | 826. <i>Acaena saccaticupula</i> Bitter. | Bratislava |
| 793. <i>Syringa vulgaris</i> L. | Dolný Kubín | 827. <i>Amelanchier spicata</i> /Lam./ K. Koch | Nitra |
| Paeoniaceae | | 828. <i>Aronia melanocarpa</i> /Michx./ Elliott 'Nero' | Janíkovce |
| 794. <i>Paeonia corallina</i> Retz. | Nitra | 829. <i>Cotoneaster buxifolius</i> Wall. ex Lindl. | Bratislava |
| 795. <i>Paeonia delavayi</i> Franch. | Nitra | 830. <i>Crataegus monogyna</i> Jacq. | Obyce |
| 796. <i>Paeonia fruticosa</i> Andrews. | Nitra | | |
| 797. <i>Paeonia mascula</i> Miller ssp. <i>arietina</i> /G. Anderson/ | Nitra | | |

| | | | | |
|------|--|-----------------|---|--------------|
| 831. | <i>Crataegus oxyacantha</i> L. emend Jacq. | Bojnice | Schönste' | |
| 832. | <i>Crataegus singularis</i> Sarg. | Zvolen | 881. <i>Rosa</i> x hybrida 'Gloria Mundi' | Zvolen |
| 833. | <i>Cydonia oblonga</i> Mill. | Zvolen | 882. <i>Rosa</i> x hybrida 'Gregor Mendel' | Zvolen |
| 834. | <i>Chaenomeles japonica</i> /Thunb./ Lindl. ex Spach. | Veľká Maňa | 883. <i>Rosa</i> x hybrida 'Griseldis' | Zvolen |
| 835. | <i>Chaenomeles speciosa</i> /Sweet/ Nakai. | Zem. Kostol'any | 884. <i>Rosa</i> x hybrida 'Grúss an Teplitz' | Zvolen |
| 836. | <i>Malus baccata</i> /L./ Borkh. | Nitra | 885. <i>Rosa</i> x hybrida 'Heinrich Conrad Söth' | Zvolen |
| 837. | <i>Malus baccata</i> /L./ Borkh. | Lefantovce | 886. <i>Rosa</i> x hybrida 'I. N. Kunov' | Zvolen |
| 838. | <i>Malus baccata</i> /L./ Borkh. f. <i>pendula</i> | Bratislava | 887. <i>Rosa</i> x hybrida 'Ignis Choteková' | Zvolen |
| 839. | <i>Malus domestica</i> Borkh. | Janíkovce | 888. <i>Rosa</i> x hybrida 'Lanaei' | Zvolen |
| 840. | <i>Malus domestica</i> Borkh. | Snina | 889. <i>Rosa</i> x hybrida 'Lord Penzance' | Zvolen |
| 841. | <i>Malus hybrida</i> Evelyn | Košice | 890. <i>Rosa</i> x hybrida 'Marbré' | Zvolen |
| 842. | <i>Malus sylvestris</i> Mill. | Lukáčov Štál | 891. <i>Rosa</i> x hybrida 'Mercedes' | Zvolen |
| 843. | <i>Malus</i> x <i>purpurea</i> /A. Barbier/ Rehd. 'Elleyi' | Bratislava | 892. <i>Rosa</i> x hybrida 'Mičurin' | Zvolen |
| 844. | <i>Physocarpus opulifolius</i> /L./ Maxim. | Zem. Kostol'any | 893. <i>Rosa</i> x hybrida 'Mme. Louis Léveque' | Zvolen |
| 845. | <i>Prunus cerasifera</i> Ehrh. | Nitra | 894. <i>Rosa</i> x hybrida 'Mme. Dubost' | Zvolen |
| 846. | <i>Prunus domestica</i> L. 'Bystrická' | Kolíňany | 895. <i>Rosa</i> x hybrida 'Puerta Del Sol' | Zvolen |
| 847. | <i>Prunus dulcis</i> /Mill./ D.A.Webb. | Nitra | 896. <i>Rosa</i> x hybrida 'Regierungsrat Rottenberger' | Zvolen |
| 848. | <i>Prunus fruticosa</i> Pall. f. <i>pendula</i> | Zvolen | 897. <i>Rosa</i> x hybrida 'Reine des Île-Bourbons' | Zvolen |
| 849. | <i>Prunus mahaleb</i> L. | Nitra | 898. <i>Rosa</i> x hybrida 'Rosengärtner Kabus' | Zvolen |
| 850. | <i>Prunus pensylvanica</i> L.f. | Nitra | 899. <i>Rosa</i> x hybrida 'Souv. De Victorie Landeau' | Zvolen |
| 851. | <i>Prunus persica</i> /L./ Batsch. 'Redhaven' | Janíkovce | 900. <i>Rosa</i> x hybrida 'Tolstoj' | Zvolen |
| 852. | <i>Prunus spinosa</i> L. | Želiezovce | 901. <i>Rosa</i> x hybrida 'Westerland' | Zvolen |
| 853. | <i>Pyrus pyraeaster</i> Burgsd. | Lukáčov Štál | 902. <i>Rosa</i> x hybrida 'Zigeunerknabe' | Zvolen |
| 854. | <i>Pyrus salicifolia</i> Pall. | Nitra | 903. <i>Rosa</i> x <i>pteragonis</i> M.Krause ex Kordes | Zvolen |
| 855. | <i>Rosa alba</i> 'Suavelons' | Zvolen | 904. <i>Rosa xanthina</i> Lindl. 'Canary Bird' | Zvolen |
| 856. | <i>Rosa canina</i> L. | Jelenec | 905. <i>Sorbus aria</i> /L./ Crantz. | Krásna Hôrka |
| 857. | <i>Rosa canina</i> L. | Malá Lehota | 906. <i>Sorbus aria</i> /L./ Crantz. | Nitra |
| 858. | <i>Rosa canina</i> L. 'Pávův šípek' | Maňa | | |
| 859. | <i>Rosa centifolia</i> L. | Bratislava | Rutaceae | |
| 860. | <i>Rosa gallica</i> L. | Zvolen | 907. <i>Phellodendron amurense</i> Rupr. | Bojnice |
| 861. | <i>Rosa gallica</i> L. 'Complicata' | Zvolen | 908. <i>Zanthoxylum americanum</i> Mill. | Veľká Maňa |
| 862. | <i>Rosa glauca</i> Pourret | Zvolen | 909. <i>Zanthoxylum simulans</i> Hance. | Bratislava |
| 863. | <i>Rosa hugonis</i> Hemsl. | Nitra | | |
| 864. | <i>Rosa multiflora</i> Thunb. | Klátová N. Ves | Sapindaceae | |
| 865. | <i>Rosa pomifera</i> Herrm. 'Karpátia' | Janíkovce | 910. <i>Aesculus hippocastanum</i> L. | Nitra |
| 866. | <i>Rosa rugosa</i> Thunb. | N. V./ Žitavou | 911. <i>Aesculus parviflora</i> Walter. | Bratislava |
| 867. | <i>Rosa rugosa</i> Thunb. 'Alba' | Bratislava | 912. <i>Aesculus</i> x <i>carnea</i> Hayne. | Čechynce |
| 868. | <i>Rosa rugosa</i> Thunb. 'Magnifica' | Zvolen | 913. <i>Aesculus</i> x <i>carnea</i> Hayne. 'Briotii' | Bojnice |
| 869. | <i>Rosa</i> x <i>damascena</i> Mill. | Zvolen | | |
| 870. | <i>Rosa</i> x hybrida 'Blanche Moreau' | Zvolen | Scrophulariaceae | |
| 871. | <i>Rosa</i> x hybrida 'Blue Boy' | Zvolen | 914. <i>Buddleia alternifolia</i> Maxim. | Nitra |
| 872. | <i>Rosa</i> x hybrida 'Bobrovka' | Zvolen | | |
| 873. | <i>Rosa</i> x hybrida 'Duc De Constantine' | Zvolen | | |
| 874. | <i>Rosa</i> x hybrida 'El Ariana' | Zvolen | Solanaceae | |
| 875. | <i>Rosa</i> x hybrida 'Felicia' | Zvolen | 915. <i>Capsicum frutescens</i> L. | Nitra |
| 876. | <i>Rosa</i> x hybrida 'Frau Karl Druschki' | Zvolen | 916. <i>Capsicum frutescens</i> L. | Nitra |
| 877. | <i>Rosa</i> x hybrida 'Frühling's Anfang' | Zvolen | 917. <i>Capsicum frutescens</i> L. 'Diablo' | Bratislava |
| 878. | <i>Rosa</i> x hybrida 'Geisha' | Zvolen | 918. <i>Capsicum chinense</i> Jacq. 'Habanero' (yellow) | Nitra |
| 879. | <i>Rosa</i> x hybrida 'Geschwind's Nordlandrose' | Zvolen | 919. <i>Capsicum chinense</i> Jacq. 'Habanero' (red) | Nitra |
| 880. | <i>Rosa</i> x hybrida 'Geschwind's | Zvolen | | |

Locality list:

| | | | Name of locality | Coordinates |
|------|---|------------------|-------------------------|------------------------------|
| 920. | <i>Hyoscyamus niger</i> L. | Krásna Hôrka | | |
| 921. | <i>Lycium chinense</i> Mill. | Bratislava | Abramová | 48°55'48.85"N, 18°47'54.34"E |
| | | | Betliar | 48°42'12.67"N, 20°30'2.52"E |
| 922. | <i>Physalis alkekengi</i> L. | Liptovský Hrádok | Bojince | 48°47'7.65"N, 18°34'54.46"E |
| | | | Bošany | 48°34'52.13"N, 18°15'3.55"E |
| 923. | <i>Solanum aethiopicum</i> L. | Nitra | Bratislava | 48°8'42.27"N, 17°6'9.13"E |
| 924. | <i>Solanum betaceum</i> Cav. | Košice | Čechynce | 48°15'30.98"N, 18°9'30.26"E |
| 925. | <i>Solanum dulcamara</i> L. | Dobrá Voda | Čierna Voda | 48°7'47"N, 17°38'51.6"E |
| 926. | <i>Solanum dulcamara</i> L. | Nitra | Dobrá Niva | 48°28'42.17"N, 19°5'40.75"E |
| 927. | <i>Solanum ovigerum</i> Dunal | Nitra | Dolná Strehová | 48°14'55.47"N, 19°29'16.87"E |
| 928. | <i>Solanum nigrum</i> L. | Viničné | Janíkovce | 48°17'27.19"N, 18°8'3.22"E |
| 929. | <i>Solanum pseudocapsicum</i> L. | Nitra | J. Kostolány | 48°28'19.8"N, 18°29'55.97"E |
| 930. | <i>Solanum pseudocapsicum</i> L. 'Variegatum' | Poprad | Jelenec | 48°22'38.42"N, 18°13'46.27"E |
| | | | Kľak | 48°35'10.6"N, 18°38'30.53"E |
| 931. | <i>Solanum rostratum</i> Dunal | Nitra | Klátová N. Ves | 48°33'54.33"N, 18°18'36.7"E |
| 932. | <i>Solanum sisymbriifolium</i> Lam. (white flower) | Nitra | Kolíňany | 48°21'46.81"N, 18°11'49.74"E |
| 933. | <i>Solanum sisymbriifolium</i> Lam. (purple flower) | Nitra | Komjatice | 48°9'9.79"N, 18°10'19.59"E |
| 934. | <i>Solanum topiro</i> Dunal | Nitra | Košice | 48°43'23.19"N, 21°15'16.64"E |
| | | | Krásna Hôrka | 49°19'48.37"N, 19°33'43.57"E |
| | | | Dolný Kubín | 49°12'47.67"N, 19°18'14.22"E |
| | | | Lefantovce | 48°25'35.89"N, 18°7'24.97"E |
| | | | Limbach | 48°17'17.81"N, 17°13'25.25"E |
| | | | Liptovský Hrádok | 49°2'26.25"N, 19°43'4.47"E |
| 935. | <i>Pterostyrax hispida</i> Sieb. & Zucc. | Bratislava | Lukáčov Štál | 48°31'15.4"N, 18°34'40.11"E |
| | | | Malá Lehota | 48°29'40.51"N, 18°34'28.37"E |
| | | | Modrý Kameň | 48°14'34.02"N, 19°19'45"E |
| | | | Nitra | 48°18'46.26"N, 18°5'46.81"E |
| | | | Nová Baňa | 48°25'42.47"N, 18°38'3.3"E |
| | | | N. V. / Žitavou | 48°17'27.99"N, 18°19'21.67"E |
| | | | Obyce | 48°25'47.11"N, 18°27'13.41"E |
| | | | Pezinok | 48°17'49.43"N, 17°16'5.96"E |
| | | | Podbanské | 49°8'3.01"N, 19°53'2.62"E |
| | | | Poprad | 49°3'18.89"N, 20°17'56.22"E |
| | | | Prešov | 49°0'10.94"N, 21°14'31.36"E |
| | | | Sládkovičovo | 48°12'13.26"N, 17°38'14.03"E |
| | | | Snina | 48°59'21.61"N, 22°9'10.54"E |
| 939. | <i>Clerodendrum bungei</i> Steud. | Nitra | Szombathely (Hungary) | 47°14'54.83"N, 16°39'5.02"E |
| | | | Veľká Maňa | 48°9'27.22"N, 18°17'12.13"E |
| 940. | <i>Verbena officinalis</i> L. | Čierna Voda | Viničné | 48°16'6.86"N, 17°18'15.83"E |
| | | | Zemianske Kostolány | 48°41'13.64"N, 18°31'38.7"E |
| | | | Zvolen | 48°34'37.11"N, 19°7'45.96"E |
| | | | Želiezovce | 48°3'7.52"N, 18°39'20.3"E |
| | | | Živánska Veža | 48°28'25.46"N, 18°32'10.31"E |
| 941. | <i>Ampelopsis arborea</i> /L./ Koehne. | Nitra | | |
| 942. | <i>Ampelopsis brevipedunculata</i> /Maxim./ Trautv. 'Elegans' | Nitra | | |
| 943. | <i>Ampelopsis cordata</i> Michx. | Bratislava | | |
| 944. | <i>Ampelopsis japonica</i> /Thunb./ Makino. | Veľká Maňa | | |
| 945. | <i>Ampelopsis megalophylla</i> Diels & Gilg | Bratislava | | |
| 946. | <i>Partenocissus quinquefolia</i> /L./ Planch. | Nitra | | |